



Full wwPDB X-ray Structure Validation Report ⓘ

May 15, 2020 – 10:19 pm BST

PDB ID : 1H9X
Title : Cytochrome cd1 Nitrite Reductase, reduced form
Authors : Sjogren, T.; Hajdu, J.
Deposited on : 2001-03-23
Resolution : 2.10 Å(reported)

This is a Full wwPDB X-ray Structure Validation Report for a publicly released PDB entry.

We welcome your comments at validation@mail.wwpdb.org

A user guide is available at

<https://www.wwpdb.org/validation/2017/XrayValidationReportHelp>

with specific help available everywhere you see the ⓘ symbol.

The following versions of software and data (see [references ⓘ](#)) were used in the production of this report:

MolProbity : 4.02b-467
Mogul : 1.8.5 (274361), CSD as541be (2020)
Xtriage (Phenix) : 1.13
EDS : 2.11
buster-report : 1.1.7 (2018)
Percentile statistics : 20191225.v01 (using entries in the PDB archive December 25th 2019)
Refmac : 5.8.0158
CCP4 : 7.0.044 (Gargrove)
Ideal geometry (proteins) : Engh & Huber (2001)
Ideal geometry (DNA, RNA) : Parkinson et al. (1996)
Validation Pipeline (wwPDB-VP) : 2.11

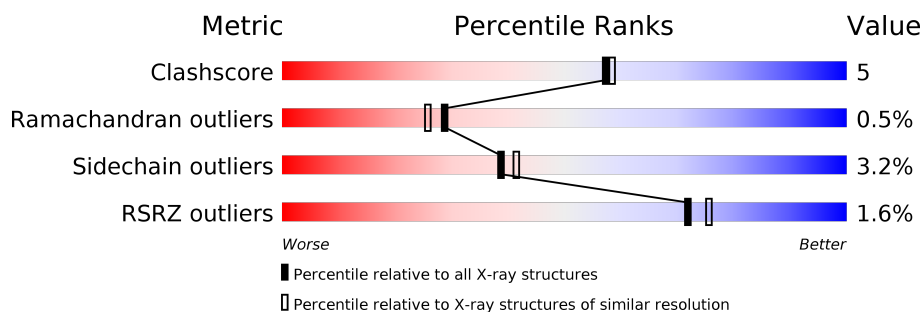
1 Overall quality at a glance

The following experimental techniques were used to determine the structure:

X-RAY DIFFRACTION

The reported resolution of this entry is 2.10 Å.

Percentile scores (ranging between 0-100) for global validation metrics of the entry are shown in the following graphic. The table shows the number of entries on which the scores are based.



Metric	Whole archive (#Entries)	Similar resolution (#Entries, resolution range(Å))
Clashscore	141614	5710 (2.10-2.10)
Ramachandran outliers	138981	5647 (2.10-2.10)
Sidechain outliers	138945	5648 (2.10-2.10)
RSRZ outliers	127900	5083 (2.10-2.10)

The table below summarises the geometric issues observed across the polymeric chains and their fit to the electron density. The red, orange, yellow and green segments on the lower bar indicate the fraction of residues that contain outliers for ≥ 3 , 2, 1 and 0 types of geometric quality criteria respectively. A grey segment represents the fraction of residues that are not modelled. The numeric value for each fraction is indicated below the corresponding segment, with a dot representing fractions $\leq 5\%$. The upper red bar (where present) indicates the fraction of residues that have poor fit to the electron density. The numeric value is given above the bar.

Mol	Chain	Length	Quality of chain
1	A	567	<div> <div>2%</div> <div>83%</div> <div>8%</div> <div>7%</div> </div>
1	B	567	<div> <div>%</div> <div>79%</div> <div>12%</div> <div>7%</div> </div>

2 Entry composition [i](#)

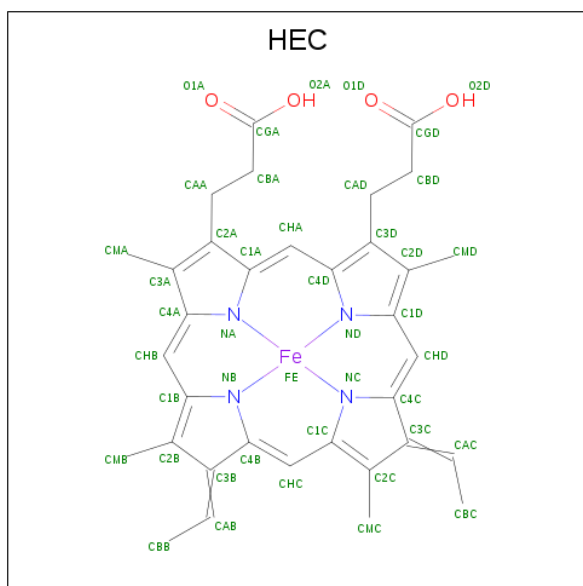
There are 6 unique types of molecules in this entry. The entry contains 9051 atoms, of which 0 are hydrogens and 0 are deuteriums.

In the tables below, the ZeroOcc column contains the number of atoms modelled with zero occupancy, the AltConf column contains the number of residues with at least one atom in alternate conformation and the Trace column contains the number of residues modelled with at most 2 atoms.

- Molecule 1 is a protein called CYTOCHROME CD1 NITRITE REDUCTASE.

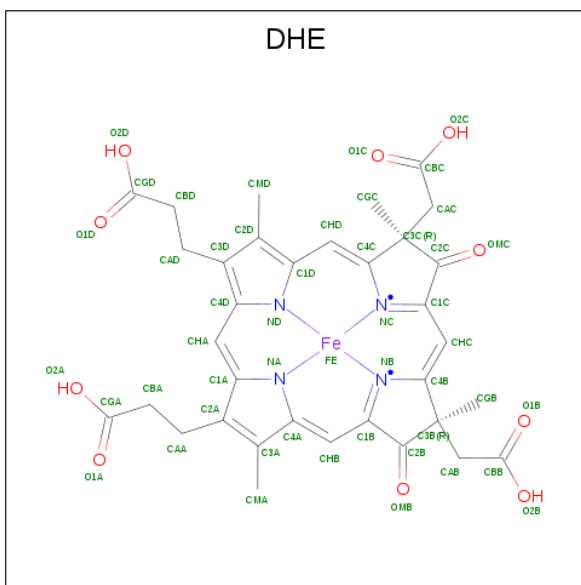
Mol	Chain	Residues	Atoms					ZeroOcc	AltConf	Trace
1	A	526	Total	C	N	O	S	0	0	0
			4094	2593	682	805	14			
1	B	529	Total	C	N	O	S	0	0	0
			4110	2603	685	808	14			

- Molecule 2 is HEME C (three-letter code: HEC) (formula: $C_{34}H_{34}FeN_4O_4$).



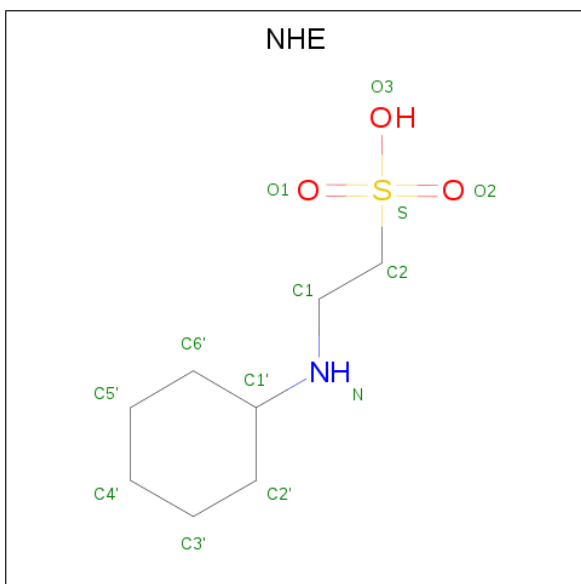
Mol	Chain	Residues	Atoms					ZeroOcc	AltConf
2	A	1	Total	C	Fe	N	O	0	0
			43	34	1	4	4		
2	B	1	Total	C	Fe	N	O	0	0
			43	34	1	4	4		

- Molecule 3 is HEME D (three-letter code: DHE) (formula: $C_{34}H_{32}FeN_4O_{10}$).



Mol	Chain	Residues	Atoms					ZeroOcc	AltConf
3	A	1	Total 49	C 34	Fe 1	N 4	O 10	0	0
3	B	1	Total 49	C 34	Fe 1	N 4	O 10	0	0

- Molecule 4 is 2-[N-CYCLOHEXYLAMINO]ETHANE SULFONIC ACID (three-letter code: NHE) (formula: $\text{C}_8\text{H}_{17}\text{NO}_3\text{S}$).



Mol	Chain	Residues	Atoms					ZeroOcc	AltConf
4	B	1	Total	C	N	O	S	0	0
			13	8	1	3	1		

- Molecule 5 is SULFATE ION (three-letter code: SO4) (formula: O₄S).



Mol	Chain	Residues	Atoms			ZeroOcc	AltConf
5	B	1	Total	O	S	0	0
			5	4	1		
5	B	1	Total	O	S	0	0
			5	4	1		
5	B	1	Total	O	S	0	0
			5	4	1		

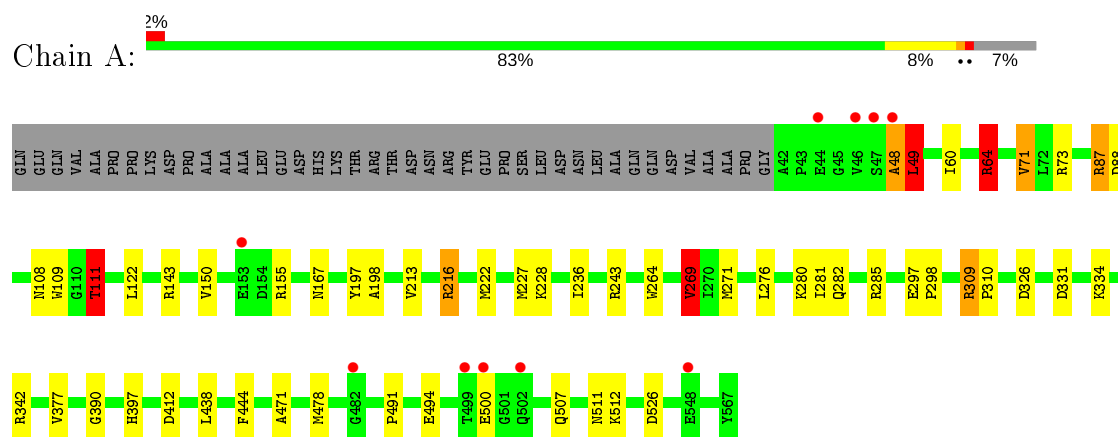
- Molecule 6 is water.

Mol	Chain	Residues	Atoms		ZeroOcc	AltConf
6	A	317	Total	O	0	0
			317	317		
6	B	318	Total	O	0	0
			318	318		

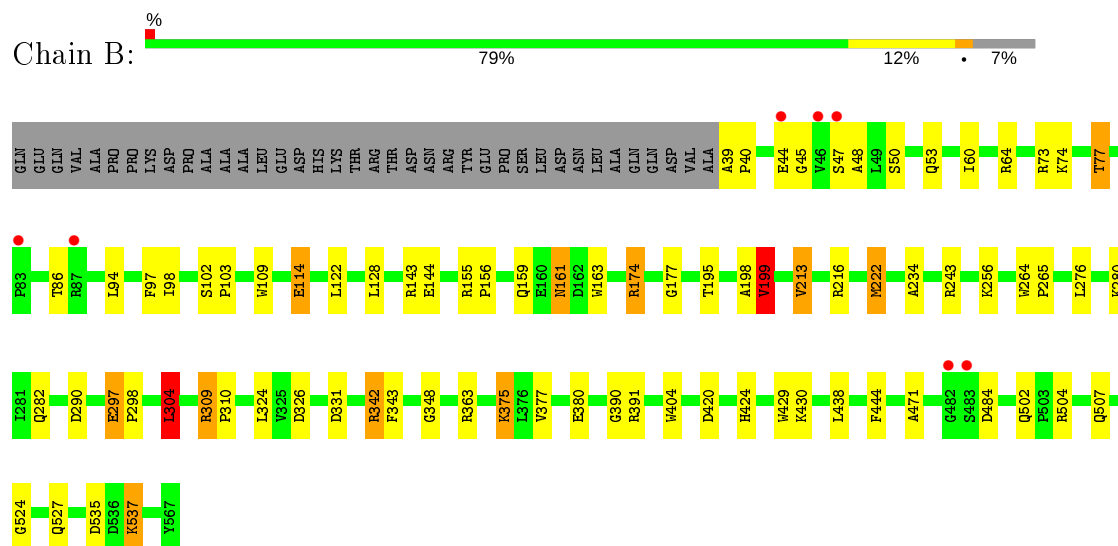
3 Residue-property plots [i](#)

These plots are drawn for all protein, RNA and DNA chains in the entry. The first graphic for a chain summarises the proportions of the various outlier classes displayed in the second graphic. The second graphic shows the sequence view annotated by issues in geometry and electron density. Residues are color-coded according to the number of geometric quality criteria for which they contain at least one outlier: green = 0, yellow = 1, orange = 2 and red = 3 or more. A red dot above a residue indicates a poor fit to the electron density ($RSRZ > 2$). Stretches of 2 or more consecutive residues without any outlier are shown as a green connector. Residues present in the sample, but not in the model, are shown in grey.

• Molecule 1: CYTOCHROME CD1 NITRITE REDUCTASE



• Molecule 1: CYTOCHROME CD1 NITRITE REDUCTASE



4 Data and refinement statistics

Property	Value	Source
Space group	P 43 21 2	Depositor
Cell constants a, b, c, α , β , γ	127.97Å 127.97Å 264.13Å 90.00° 90.00° 90.00°	Depositor
Resolution (Å)	30.00 – 2.10 29.97 – 2.11	Depositor EDS
% Data completeness (in resolution range)	99.7 (30.00-2.10) 99.4 (29.97-2.11)	Depositor EDS
R_{merge}	0.08	Depositor
R_{sym}	0.08	Depositor
$\langle I/\sigma(I) \rangle$	-	Xtriage
Refinement program	REFMAC	Depositor
R, R_{free}	0.216 , 0.241 0.197 , (Not available)	Depositor DCC
R_{free} test set	No test flags present.	wwPDB-VP
Wilson B-factor (Å ²)	26.5	Xtriage
Anisotropy	0.264	Xtriage
Bulk solvent k_{sol} (e/Å ³), B_{sol} (Å ²)	0.36 , 47.0	EDS
L-test for twinning ¹	$\langle L \rangle = 0.49$, $\langle L^2 \rangle = 0.32$	Xtriage
Estimated twinning fraction	No twinning to report.	Xtriage
F_o, F_c correlation	0.95	EDS
Total number of atoms	9051	wwPDB-VP
Average B, all atoms (Å ²)	28.0	wwPDB-VP

Xtriage's analysis on translational NCS is as follows: *The largest off-origin peak in the Patterson function is 2.24% of the height of the origin peak. No significant pseudotranslation is detected.*

¹Theoretical values of $\langle |L| \rangle$, $\langle L^2 \rangle$ for acentric reflections are 0.5, 0.333 respectively for untwinned datasets, and 0.375, 0.2 for perfectly twinned datasets.

5 Model quality ⓘ

5.1 Standard geometry ⓘ

Bond lengths and bond angles in the following residue types are not validated in this section: NHE, DHE, SO4, HEC

The Z score for a bond length (or angle) is the number of standard deviations the observed value is removed from the expected value. A bond length (or angle) with $|Z| > 5$ is considered an outlier worth inspection. RMSZ is the root-mean-square of all Z scores of the bond lengths (or angles).

Mol	Chain	Bond lengths		Bond angles	
		RMSZ	# Z >5	RMSZ	# Z >5
1	A	0.47	0/4195	1.14	20/5705 (0.4%)
1	B	0.48	0/4212	1.19	26/5729 (0.5%)
All	All	0.48	0/8407	1.16	46/11434 (0.4%)

There are no bond length outliers.

All (46) bond angle outliers are listed below:

Mol	Chain	Res	Type	Atoms	Z	Observed(°)	Ideal(°)
1	B	174	ARG	NE-CZ-NH2	21.18	130.89	120.30
1	A	285	ARG	NE-CZ-NH2	-11.44	114.58	120.30
1	A	309	ARG	NE-CZ-NH1	9.57	125.08	120.30
1	B	342	ARG	NE-CZ-NH1	9.44	125.02	120.30
1	B	363	ARG	NE-CZ-NH1	9.40	125.00	120.30
1	B	199	VAL	CB-CA-C	-8.86	94.57	111.40
1	B	309	ARG	NE-CZ-NH2	-8.83	115.89	120.30
1	B	73	ARG	NE-CZ-NH2	-8.53	116.04	120.30
1	A	342	ARG	CD-NE-CZ	8.34	135.28	123.60
1	A	285	ARG	NE-CZ-NH1	8.11	124.36	120.30
1	B	342	ARG	NE-CZ-NH2	-8.05	116.28	120.30
1	A	143	ARG	NE-CZ-NH2	-8.02	116.29	120.30
1	A	269	VAL	CB-CA-C	-7.81	96.57	111.40
1	B	504	ARG	NE-CZ-NH1	7.66	124.13	120.30
1	A	216	ARG	NE-CZ-NH2	-7.44	116.58	120.30
1	A	309	ARG	CD-NE-CZ	7.14	133.59	123.60
1	B	174	ARG	NE-CZ-NH1	-7.13	116.73	120.30
1	A	331	ASP	CB-CG-OD1	6.94	124.55	118.30
1	B	326	ASP	CB-CG-OD2	-6.53	112.43	118.30
1	A	73	ARG	NE-CZ-NH2	-6.46	117.07	120.30
1	B	174	ARG	NH1-CZ-NH2	-6.40	112.36	119.40
1	B	45	GLY	N-CA-C	6.38	129.04	113.10

Continued on next page...

Continued from previous page...

Mol	Chain	Res	Type	Atoms	Z	Observed(°)	Ideal(°)
1	A	342	ARG	NE-CZ-NH2	-6.33	117.13	120.30
1	B	326	ASP	CB-CG-OD1	6.26	123.94	118.30
1	A	64	ARG	NE-CZ-NH1	6.10	123.35	120.30
1	A	243	ARG	NE-CZ-NH1	6.04	123.32	120.30
1	B	243	ARG	NE-CZ-NH1	5.88	123.24	120.30
1	B	290	ASP	CB-CG-OD1	5.87	123.58	118.30
1	B	48	ALA	CA-C-N	-5.85	104.33	117.20
1	B	304	LEU	CA-CB-CG	5.84	128.73	115.30
1	B	331	ASP	CB-CG-OD1	5.79	123.51	118.30
1	B	404	TRP	CA-CB-CG	5.64	124.42	113.70
1	B	44	GLU	C-N-CA	5.53	133.91	122.30
1	B	48	ALA	CA-C-O	5.42	131.49	120.10
1	B	504	ARG	NE-CZ-NH2	-5.32	117.64	120.30
1	B	390	GLY	N-CA-C	-5.30	99.86	113.10
1	A	390	GLY	N-CA-C	-5.25	99.97	113.10
1	A	155	ARG	NE-CZ-NH2	-5.23	117.68	120.30
1	B	309	ARG	CD-NE-CZ	5.23	130.92	123.60
1	A	412	ASP	CB-CG-OD1	5.21	122.99	118.30
1	B	391	ARG	NE-CZ-NH2	-5.10	117.75	120.30
1	A	326	ASP	CB-CG-OD1	5.09	122.89	118.30
1	A	71	VAL	N-CA-CB	-5.07	100.36	111.50
1	A	309	ARG	NE-CZ-NH2	-5.06	117.77	120.30
1	B	143	ARG	NE-CZ-NH2	-5.04	117.78	120.30
1	A	111	THR	N-CA-CB	-5.02	100.76	110.30

There are no chirality outliers.

There are no planarity outliers.

5.2 Too-close contacts ⓘ

In the following table, the Non-H and H(model) columns list the number of non-hydrogen atoms and hydrogen atoms in the chain respectively. The H(added) column lists the number of hydrogen atoms added and optimized by MolProbity. The Clashes column lists the number of clashes within the asymmetric unit, whereas Symm-Clashes lists symmetry related clashes.

Mol	Chain	Non-H	H(model)	H(added)	Clashes	Symm-Clashes
1	A	4094	0	3948	34	0
1	B	4110	0	3963	44	0
2	A	43	0	30	2	0
2	B	43	0	30	2	0
3	A	49	0	28	2	0

Continued on next page...

Continued from previous page...

Mol	Chain	Non-H	H(model)	H(added)	Clashes	Symm-Clashes
3	B	49	0	28	2	0
4	B	13	0	17	0	0
5	B	15	0	0	1	0
6	A	317	0	0	5	0
6	B	318	0	0	3	0
All	All	9051	0	8044	81	0

The all-atom clashscore is defined as the number of clashes found per 1000 atoms (including hydrogen atoms). The all-atom clashscore for this structure is 5.

All (81) close contacts within the same asymmetric unit are listed below, sorted by their clash magnitude.

Atom-1	Atom-2	Interatomic distance (Å)	Clash overlap (Å)
1:A:108:ASN:HD22	1:A:111:THR:HG22	1.18	1.05
1:A:271:MET:HE2	1:A:276:LEU:HD22	1.60	0.81
1:A:108:ASN:ND2	1:A:111:THR:HG22	1.99	0.74
1:A:271:MET:CE	1:A:276:LEU:HD22	2.16	0.73
1:B:161:ASN:HD22	1:B:163:TRP:H	1.36	0.73
1:A:264:TRP:HZ3	1:A:297:GLU:HG2	1.54	0.71
1:B:222:MET:CE	1:B:276:LEU:HG	2.21	0.71
1:A:108:ASN:HD22	1:A:111:THR:CG2	2.03	0.69
1:A:236:ILE:HG21	1:A:271:MET:HE3	1.77	0.66
1:A:438:LEU:HG	1:A:471:ALA:HB2	1.78	0.66
1:A:167:ASN:HD21	1:A:511:ASN:HB2	1.61	0.65
1:A:167:ASN:ND2	1:A:512:LYS:H	1.95	0.65
1:B:109:TRP:CE2	2:B:601:HEC:HBB2	2.34	0.63
1:B:159:GLN:HE21	1:B:161:ASN:ND2	1.97	0.62
1:B:86:THR:HG22	1:B:128:LEU:HD23	1.83	0.61
1:B:222:MET:HE2	1:B:276:LEU:HG	1.82	0.61
1:A:111:THR:HG21	6:A:2044:HOH:O	2.00	0.60
1:A:87:ARG:HH11	1:A:87:ARG:HB3	1.66	0.59
1:B:438:LEU:HG	1:B:471:ALA:HB2	1.85	0.58
1:A:48:ALA:O	1:A:49:LEU:HB2	2.02	0.58
3:A:602:DHE:HBD2	3:A:602:DHE:HMD1	1.85	0.58
1:A:280:LYS:HE3	1:A:282:GLN:NE2	2.19	0.57
1:A:269:VAL:HG13	1:A:281:ILE:HG12	1.88	0.56
1:B:222:MET:HE1	1:B:276:LEU:HG	1.88	0.56
1:B:304:LEU:HD11	1:B:348:GLY:HA2	1.87	0.56
1:B:177:GLY:HA2	1:B:199:VAL:HG22	1.88	0.55
1:A:150:VAL:HG21	1:A:227:MET:HE1	1.89	0.55
3:B:602:DHE:HMD1	3:B:602:DHE:HBD2	1.90	0.54

Continued on next page...

Continued from previous page...

Atom-1	Atom-2	Interatomic distance (Å)	Clash overlap (Å)
1:A:109:TRP:CE2	2:A:601:HEC:HBB2	2.42	0.54
1:B:222:MET:CE	1:B:234:ALA:HB3	2.39	0.52
1:B:502:GLN:NE2	6:B:2261:HOH:O	2.36	0.52
1:B:537:LYS:HE3	1:B:537:LYS:H	1.76	0.51
1:B:102:SER:HB2	1:B:103:PRO:HD2	1.92	0.50
1:B:39:ALA:N	1:B:40:PRO:CD	2.74	0.49
1:A:491:PRO:HB2	1:A:494:GLU:HB3	1.94	0.49
1:A:60:ILE:HG23	1:A:64:ARG:HG3	1.95	0.49
1:B:222:MET:HE3	1:B:234:ALA:HB3	1.95	0.49
1:B:444:PHE:CE1	3:B:602:DHE:HBD1	2.48	0.48
1:B:342:ARG:O	1:B:343:PHE:HB2	2.13	0.48
1:B:375:LYS:HB3	1:B:375:LYS:NZ	2.29	0.48
1:B:537:LYS:N	1:B:537:LYS:HE3	2.29	0.48
1:B:109:TRP:HE3	1:B:114:GLU:HB3	1.77	0.48
1:B:198:ALA:HB1	1:B:216:ARG:HB2	1.96	0.48
1:B:50:SER:H	1:B:53:GLN:HE21	1.62	0.47
1:A:222:MET:HE3	1:A:276:LEU:CD2	2.45	0.47
1:A:444:PHE:CE1	3:A:602:DHE:HBD1	2.49	0.47
1:B:86:THR:HG23	1:B:94:LEU:HD21	1.96	0.47
1:A:167:ASN:HD22	1:A:512:LYS:H	1.61	0.46
1:A:271:MET:HE2	1:A:276:LEU:CD2	2.39	0.46
1:A:478:MET:HE2	6:A:2255:HOH:O	2.16	0.46
1:B:86:THR:CG2	1:B:94:LEU:HD11	2.45	0.46
1:B:155:ARG:HB3	1:B:156:PRO:HD2	1.98	0.45
1:B:280:LYS:HE3	1:B:282:GLN:NE2	2.32	0.45
1:B:535:ASP:OD1	1:B:537:LYS:NZ	2.49	0.45
1:A:271:MET:HE1	1:A:276:LEU:HD22	1.99	0.45
1:B:420:ASP:OD2	1:B:424:HIS:HD2	2.00	0.45
1:B:60:ILE:HG23	1:B:64:ARG:HD3	1.99	0.45
1:B:380:GLU:HG3	1:B:429:TRP:O	2.16	0.44
1:B:524:GLY:H	1:B:527:GLN:HE21	1.65	0.44
1:B:53:GLN:HB3	1:B:122:LEU:HD21	1.99	0.44
1:A:334:LYS:HD2	6:A:2082:HOH:O	2.17	0.44
1:B:98:ILE:HG12	2:B:601:HEC:HMB2	1.99	0.44
1:A:309:ARG:HB3	1:A:310:PRO:HD2	2.00	0.43
1:A:197:TYR:O	1:A:198:ALA:HB3	2.17	0.43
1:A:297:GLU:N	1:A:298:PRO:HD3	2.32	0.43
1:B:77:THR:HG23	6:B:2014:HOH:O	2.18	0.43
1:B:484:ASP:HB3	6:B:2246:HOH:O	2.17	0.43
1:A:216:ARG:HD3	6:A:2015:HOH:O	2.19	0.43
1:A:264:TRP:CZ3	1:A:297:GLU:HG2	2.42	0.42

Continued on next page...

Continued from previous page...

Atom-1	Atom-2	Interatomic distance (Å)	Clash overlap (Å)
1:B:297:GLU:N	1:B:298:PRO:HD3	2.34	0.42
1:B:74:LYS:HD2	5:B:622:SO4:O4	2.19	0.42
1:B:309:ARG:NH2	1:B:324:LEU:HD13	2.34	0.42
1:A:397:HIS:HD2	1:A:478:MET:HE1	1.85	0.41
1:B:195:THR:HG21	1:B:213:VAL:HG21	2.02	0.41
1:B:195:THR:OG1	1:B:199:VAL:HG13	2.20	0.41
1:B:264:TRP:CD2	1:B:265:PRO:HA	2.55	0.41
1:A:397:HIS:CD2	1:A:478:MET:HE1	2.56	0.41
1:A:526:ASP:HB2	6:A:2288:HOH:O	2.21	0.41
2:A:601:HEC:HBC3	2:A:601:HEC:HMC1	2.01	0.41
1:B:309:ARG:HB3	1:B:310:PRO:HD2	2.03	0.40
1:B:222:MET:HE2	1:B:222:MET:HB3	1.88	0.40

There are no symmetry-related clashes.

5.3 Torsion angles [i](#)

5.3.1 Protein backbone [i](#)

In the following table, the Percentiles column shows the percent Ramachandran outliers of the chain as a percentile score with respect to all X-ray entries followed by that with respect to entries of similar resolution.

The Analysed column shows the number of residues for which the backbone conformation was analysed, and the total number of residues.

Mol	Chain	Analysed	Favoured	Allowed	Outliers	Percentiles	
1	A	524/567 (92%)	497 (95%)	24 (5%)	3 (1%)	25	21
1	B	527/567 (93%)	503 (95%)	22 (4%)	2 (0%)	34	32
All	All	1051/1134 (93%)	1000 (95%)	46 (4%)	5 (0%)	29	26

All (5) Ramachandran outliers are listed below:

Mol	Chain	Res	Type
1	A	48	ALA
1	B	507	GLN
1	A	49	LEU
1	A	507	GLN
1	B	47	SER

5.3.2 Protein sidechains ⓘ

In the following table, the Percentiles column shows the percent sidechain outliers of the chain as a percentile score with respect to all X-ray entries followed by that with respect to entries of similar resolution.

The Analysed column shows the number of residues for which the sidechain conformation was analysed, and the total number of residues.

Mol	Chain	Analysed	Rotameric	Outliers	Percentiles	
1	A	436/469 (93%)	424 (97%)	12 (3%)	43	47
1	B	437/469 (93%)	421 (96%)	16 (4%)	34	35
All	All	873/938 (93%)	845 (97%)	28 (3%)	39	41

All (28) residues with a non-rotameric sidechain are listed below:

Mol	Chain	Res	Type
1	A	49	LEU
1	A	64	ARG
1	A	71	VAL
1	A	87	ARG
1	A	88	ASP
1	A	111	THR
1	A	122	LEU
1	A	213	VAL
1	A	228	LYS
1	A	269	VAL
1	A	377	VAL
1	A	500	GLU
1	B	77	THR
1	B	97	PHE
1	B	114	GLU
1	B	144	GLU
1	B	161	ASN
1	B	174	ARG
1	B	199	VAL
1	B	213	VAL
1	B	222	MET
1	B	256	LYS
1	B	297	GLU
1	B	304	LEU
1	B	375	LYS
1	B	377	VAL
1	B	430	LYS

Continued on next page...

Continued from previous page...

Mol	Chain	Res	Type
1	B	537	LYS

Some sidechains can be flipped to improve hydrogen bonding and reduce clashes. All (14) such sidechains are listed below:

Mol	Chain	Res	Type
1	A	167	ASN
1	A	221	ASN
1	A	282	GLN
1	A	385	GLN
1	A	452	GLN
1	A	527	GLN
1	A	561	ASN
1	B	53	GLN
1	B	158	GLN
1	B	161	ASN
1	B	178	GLN
1	B	282	GLN
1	B	424	HIS
1	B	527	GLN

5.3.3 RNA ⓘ

There are no RNA molecules in this entry.

5.4 Non-standard residues in protein, DNA, RNA chains ⓘ

There are no non-standard protein/DNA/RNA residues in this entry.

5.5 Carbohydrates ⓘ

There are no carbohydrates in this entry.

5.6 Ligand geometry ⓘ

8 ligands are modelled in this entry.

In the following table, the Counts columns list the number of bonds (or angles) for which Mogul statistics could be retrieved, the number of bonds (or angles) that are observed in the model and the number of bonds (or angles) that are defined in the Chemical Component Dictionary. The

Link column lists molecule types, if any, to which the group is linked. The Z score for a bond length (or angle) is the number of standard deviations the observed value is removed from the expected value. A bond length (or angle) with $|Z| > 2$ is considered an outlier worth inspection. RMSZ is the root-mean-square of all Z scores of the bond lengths (or angles).

Mol	Type	Chain	Res	Link	Bond lengths			Bond angles		
					Counts	RMSZ	$\# Z > 2$	Counts	RMSZ	$\# Z > 2$
5	SO4	B	623	-	4,4,4	0.67	0	6,6,6	0.22	0
3	DHE	A	602	1	38,56,56	7.73	25 (65%)	37,94,94	4.09	25 (67%)
4	NHE	B	611	-	13,13,13	1.99	1 (7%)	16,17,17	3.00	5 (31%)
5	SO4	B	621	-	4,4,4	0.69	0	6,6,6	0.45	0
2	HEC	B	601	1	26,50,50	2.41	6 (23%)	18,82,82	2.30	10 (55%)
2	HEC	A	601	1	26,50,50	2.54	8 (30%)	18,82,82	1.93	9 (50%)
3	DHE	B	602	1	38,56,56	7.68	27 (71%)	37,94,94	3.95	21 (56%)
5	SO4	B	622	-	4,4,4	0.66	0	6,6,6	0.45	0

In the following table, the Chirals column lists the number of chiral outliers, the number of chiral centers analysed, the number of these observed in the model and the number defined in the Chemical Component Dictionary. Similar counts are reported in the Torsion and Rings columns. '-' means no outliers of that kind were identified.

Mol	Type	Chain	Res	Link	Chirals	Torsions	Rings
2	HEC	B	601	1	-	0/6/54/54	-
2	HEC	A	601	1	-	0/6/54/54	-
4	NHE	B	611	-	-	3/7/15/15	0/1/1/1
3	DHE	B	602	1	-	4/12/108/108	-
3	DHE	A	602	1	-	4/12/108/108	-

All (67) bond length outliers are listed below:

Mol	Chain	Res	Type	Atoms	Z	Observed(Å)	Ideal(Å)
3	A	602	DHE	OMB-C2B	18.66	1.53	1.21
3	B	602	DHE	OMC-C2C	18.50	1.53	1.21
3	B	602	DHE	OMB-C2B	18.38	1.53	1.21
3	A	602	DHE	OMC-C2C	18.24	1.52	1.21
3	B	602	DHE	C3C-C2C	-14.78	1.34	1.52
3	A	602	DHE	C3C-C2C	-14.50	1.35	1.52
3	B	602	DHE	C3B-C2B	-14.45	1.35	1.52
3	A	602	DHE	C3B-C2B	-13.91	1.35	1.52
3	A	602	DHE	CHA-C1A	-13.30	1.37	1.51
3	B	602	DHE	CHA-C4D	-13.13	1.37	1.51
3	B	602	DHE	CHA-C1A	-12.59	1.38	1.51
3	A	602	DHE	CHA-C4D	-12.24	1.38	1.51

Continued on next page...

Continued from previous page...

Mol	Chain	Res	Type	Atoms	Z	Observed(Å)	Ideal(Å)
3	A	602	DHE	C4C-NC	-11.39	1.38	1.49
3	A	602	DHE	C4B-NB	-10.46	1.39	1.49
3	B	602	DHE	C4C-NC	-10.17	1.39	1.49
3	B	602	DHE	C4B-NB	-9.63	1.39	1.49
3	B	602	DHE	C1B-NB	-8.63	1.37	1.49
3	A	602	DHE	C1C-NC	-8.61	1.38	1.49
3	B	602	DHE	C1C-NC	-8.41	1.38	1.49
3	A	602	DHE	CHB-C1B	-8.18	1.39	1.53
3	B	602	DHE	CHB-C1B	-8.17	1.39	1.53
3	A	602	DHE	C1B-NB	-8.03	1.38	1.49
3	A	602	DHE	C3B-C4B	-7.33	1.44	1.55
2	B	601	HEC	C3C-C2C	-7.08	1.33	1.40
2	A	601	HEC	C3C-C2C	-6.98	1.33	1.40
3	B	602	DHE	C3B-C4B	-6.69	1.45	1.55
2	A	601	HEC	C3B-C2B	-6.64	1.33	1.40
4	B	611	NHE	O3-S	6.52	1.70	1.47
3	B	602	DHE	C3C-C4C	-6.51	1.46	1.55
2	B	601	HEC	C3B-C2B	-6.40	1.34	1.40
3	A	602	DHE	CHD-C4C	-6.18	1.37	1.54
3	A	602	DHE	C3C-C4C	-6.17	1.46	1.55
3	B	602	DHE	CHC-C4B	-6.14	1.37	1.52
3	B	602	DHE	C4D-C3D	5.93	1.46	1.38
3	A	602	DHE	CHC-C4B	-5.84	1.38	1.52
3	B	602	DHE	C1D-C2D	5.81	1.46	1.38
3	A	602	DHE	C1D-C2D	5.79	1.46	1.38
3	B	602	DHE	CHD-C4C	-5.79	1.38	1.54
3	A	602	DHE	C4D-C3D	5.75	1.46	1.38
3	A	602	DHE	C4A-C3A	5.42	1.45	1.38
3	B	602	DHE	CHB-C4A	-5.38	1.38	1.51
3	A	602	DHE	C1A-C2A	5.37	1.45	1.38
3	A	602	DHE	CHB-C4A	-5.21	1.38	1.51
3	A	602	DHE	CHD-C1D	-4.99	1.39	1.51
3	B	602	DHE	CHD-C1D	-4.94	1.39	1.51
3	B	602	DHE	C1A-C2A	4.59	1.44	1.38
3	B	602	DHE	C4A-C3A	4.47	1.44	1.38
3	A	602	DHE	C1B-C2B	-4.03	1.44	1.50
2	A	601	HEC	CAD-C3D	3.84	1.57	1.52
3	B	602	DHE	CHC-C1C	-3.62	1.39	1.53
3	A	602	DHE	CHC-C1C	-3.54	1.39	1.53
3	B	602	DHE	C1B-C2B	-3.22	1.45	1.50
3	B	602	DHE	CAA-C2A	3.09	1.56	1.52
2	B	601	HEC	CBB-CAB	-3.05	1.38	1.49

Continued on next page...

Continued from previous page...

Mol	Chain	Res	Type	Atoms	Z	Observed(Å)	Ideal(Å)
2	A	601	HEC	CBC-CAC	-3.01	1.38	1.49
3	A	602	DHE	CAA-C2A	3.00	1.56	1.52
3	A	602	DHE	C1C-C2C	-2.99	1.45	1.50
2	B	601	HEC	CBC-CAC	-2.95	1.38	1.49
3	B	602	DHE	C1C-C2C	-2.87	1.45	1.50
2	B	601	HEC	CAD-C3D	2.72	1.56	1.52
2	A	601	HEC	C1D-ND	2.61	1.41	1.36
2	A	601	HEC	CBB-CAB	-2.36	1.40	1.49
2	A	601	HEC	CAA-C2A	2.34	1.56	1.52
3	B	602	DHE	CAD-C3D	2.32	1.55	1.52
3	B	602	DHE	CAB-C3B	-2.18	1.52	1.56
2	A	601	HEC	CMD-C2D	2.16	1.56	1.51
2	B	601	HEC	C1B-NB	2.04	1.40	1.36

All (70) bond angle outliers are listed below:

Mol	Chain	Res	Type	Atoms	Z	Observed(°)	Ideal(°)
3	A	602	DHE	CHC-C1C-NC	12.66	126.69	110.94
3	B	602	DHE	CHC-C1C-NC	12.37	126.32	110.94
4	B	611	NHE	O2-S-C2	9.02	117.78	106.92
3	A	602	DHE	CHB-C1B-NB	8.56	126.89	110.75
3	B	602	DHE	CHB-C1B-NB	8.05	125.94	110.75
3	A	602	DHE	C4B-C3B-C2B	6.52	107.01	100.71
3	B	602	DHE	C4C-C3C-C2C	6.32	106.82	100.71
3	B	602	DHE	C4B-C3B-C2B	6.17	106.67	100.71
3	B	602	DHE	C3C-C4C-NC	6.14	110.07	104.67
3	A	602	DHE	C3C-C4C-NC	6.07	110.01	104.67
3	B	602	DHE	CAD-C3D-C4D	-5.88	123.17	127.30
3	A	602	DHE	C4C-C3C-C2C	5.71	106.23	100.71
3	A	602	DHE	CAA-C2A-C1A	-5.37	123.52	127.30
3	A	602	DHE	CHA-C4D-C3D	-5.29	123.30	129.68
3	B	602	DHE	C4D-CHA-C1A	5.22	125.61	112.87
3	A	602	DHE	CHA-C1A-C2A	-5.16	123.45	129.68
3	B	602	DHE	CAA-C2A-C1A	-5.02	123.77	127.30
4	B	611	NHE	O3-S-C2	-4.78	98.04	105.77
3	A	602	DHE	CAD-C3D-C4D	-4.57	124.09	127.30
3	A	602	DHE	CAA-CBA-CGA	4.34	119.95	112.67
4	B	611	NHE	O3-S-O1	-4.29	100.78	111.27
3	B	602	DHE	C3B-C4B-NB	4.26	108.42	104.67
3	A	602	DHE	C4D-CHA-C1A	4.13	122.96	112.87
2	B	601	HEC	CMB-C2B-C3B	3.94	130.46	125.82
3	B	602	DHE	CHA-C4D-C3D	-3.90	124.98	129.68

Continued on next page...

Continued from previous page...

Mol	Chain	Res	Type	Atoms	Z	Observed(°)	Ideal(°)
2	B	601	HEC	CMB-C2B-C1B	-3.89	122.48	128.46
3	B	602	DHE	CHD-C1D-C2D	-3.82	122.84	129.45
3	A	602	DHE	C3B-C4B-NB	3.77	107.99	104.67
3	B	602	DHE	CHC-C4B-C3B	3.73	125.66	118.34
3	A	602	DHE	CHD-C1D-C2D	-3.70	123.05	129.45
3	B	602	DHE	CHA-C1A-C2A	-3.68	125.24	129.68
3	B	602	DHE	CAD-CBD-CGD	3.63	118.76	112.67
3	A	602	DHE	CHC-C4B-C3B	3.59	125.38	118.34
2	A	601	HEC	CAD-CBD-CGD	3.39	118.36	112.67
3	A	602	DHE	CBD-CAD-C3D	3.28	118.54	112.49
3	B	602	DHE	CHB-C1B-C2B	3.16	123.77	114.47
3	A	602	DHE	CHB-C1B-C2B	3.10	123.62	114.47
3	A	602	DHE	OMC-C2C-C3C	3.07	129.83	125.59
3	A	602	DHE	OMB-C2B-C3B	3.05	129.81	125.59
2	B	601	HEC	CMD-C2D-C1D	-3.02	123.82	128.46
2	B	601	HEC	CMA-C3A-C2A	2.89	130.39	124.94
2	B	601	HEC	CBA-CAA-C2A	2.84	117.72	112.48
2	B	601	HEC	CMC-C2C-C1C	-2.80	124.16	128.46
3	A	602	DHE	CHC-C1C-C2C	2.79	123.43	114.70
3	B	602	DHE	CHC-C1C-C2C	2.77	123.36	114.70
2	A	601	HEC	CMB-C2B-C1B	-2.73	124.27	128.46
2	A	601	HEC	CMC-C2C-C1C	-2.70	124.32	128.46
3	A	602	DHE	CGC-C3C-CAC	-2.70	106.34	110.77
3	B	602	DHE	CBD-CAD-C3D	2.65	117.38	112.49
3	A	602	DHE	CAD-CBD-CGD	2.65	117.11	112.67
3	B	602	DHE	C1C-CHC-C4B	2.62	123.85	116.16
2	B	601	HEC	CMC-C2C-C3C	2.59	128.87	125.82
3	B	602	DHE	OMB-C2B-C3B	2.58	129.17	125.59
3	A	602	DHE	CMD-C2D-C3D	2.54	129.73	124.94
2	A	601	HEC	CMA-C3A-C2A	2.53	129.71	124.94
4	B	611	NHE	O2-S-O1	2.48	122.53	113.95
3	A	602	DHE	C1C-CHC-C4B	2.40	123.22	116.16
2	B	601	HEC	CAD-CBD-CGD	2.37	116.65	112.67
3	B	602	DHE	CMD-C2D-C3D	2.37	129.40	124.94
3	A	602	DHE	CGB-C3B-CAB	-2.35	106.90	110.77
2	A	601	HEC	CBD-CAD-C3D	-2.30	108.25	112.49
2	B	601	HEC	C4C-C3C-C2C	2.22	108.75	106.35
2	A	601	HEC	CMD-C2D-C1D	-2.15	125.16	128.46
2	A	601	HEC	CMB-C2B-C3B	2.14	128.33	125.82
2	B	601	HEC	CMD-C2D-C3D	2.13	128.96	124.94
3	A	602	DHE	CHB-C4A-C3A	-2.08	125.84	129.45
2	A	601	HEC	CMC-C2C-C3C	2.08	128.27	125.82

Continued on next page...

Continued from previous page...

Mol	Chain	Res	Type	Atoms	Z	Observed(°)	Ideal(°)
3	B	602	DHE	CAA-CBA-CGA	2.04	116.10	112.67
4	B	611	NHE	O3-S-O2	-2.04	106.28	111.27
2	A	601	HEC	C4B-C3B-C2B	2.03	108.55	106.35

There are no chirality outliers.

All (11) torsion outliers are listed below:

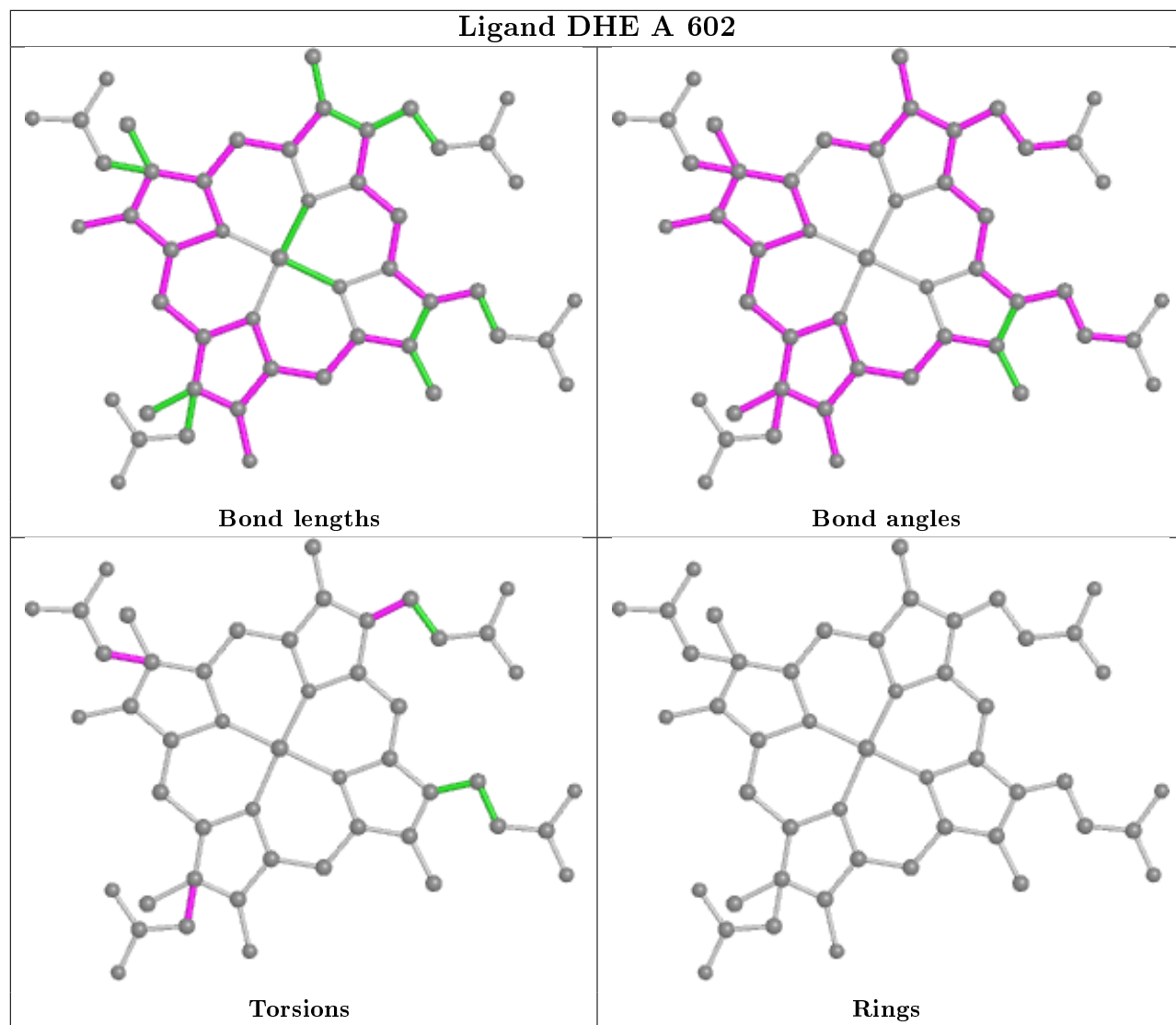
Mol	Chain	Res	Type	Atoms
3	A	602	DHE	C2D-C3D-CAD-CBD
3	A	602	DHE	C4D-C3D-CAD-CBD
3	B	602	DHE	C2D-C3D-CAD-CBD
3	B	602	DHE	C4D-C3D-CAD-CBD
4	B	611	NHE	C1-C2-S-O3
4	B	611	NHE	C1-C2-S-O2
3	A	602	DHE	CGB-C3B-CAB-CBB
3	A	602	DHE	CGC-C3C-CAC-CBC
3	B	602	DHE	CGB-C3B-CAB-CBB
3	B	602	DHE	CGC-C3C-CAC-CBC
4	B	611	NHE	C1-C2-S-O1

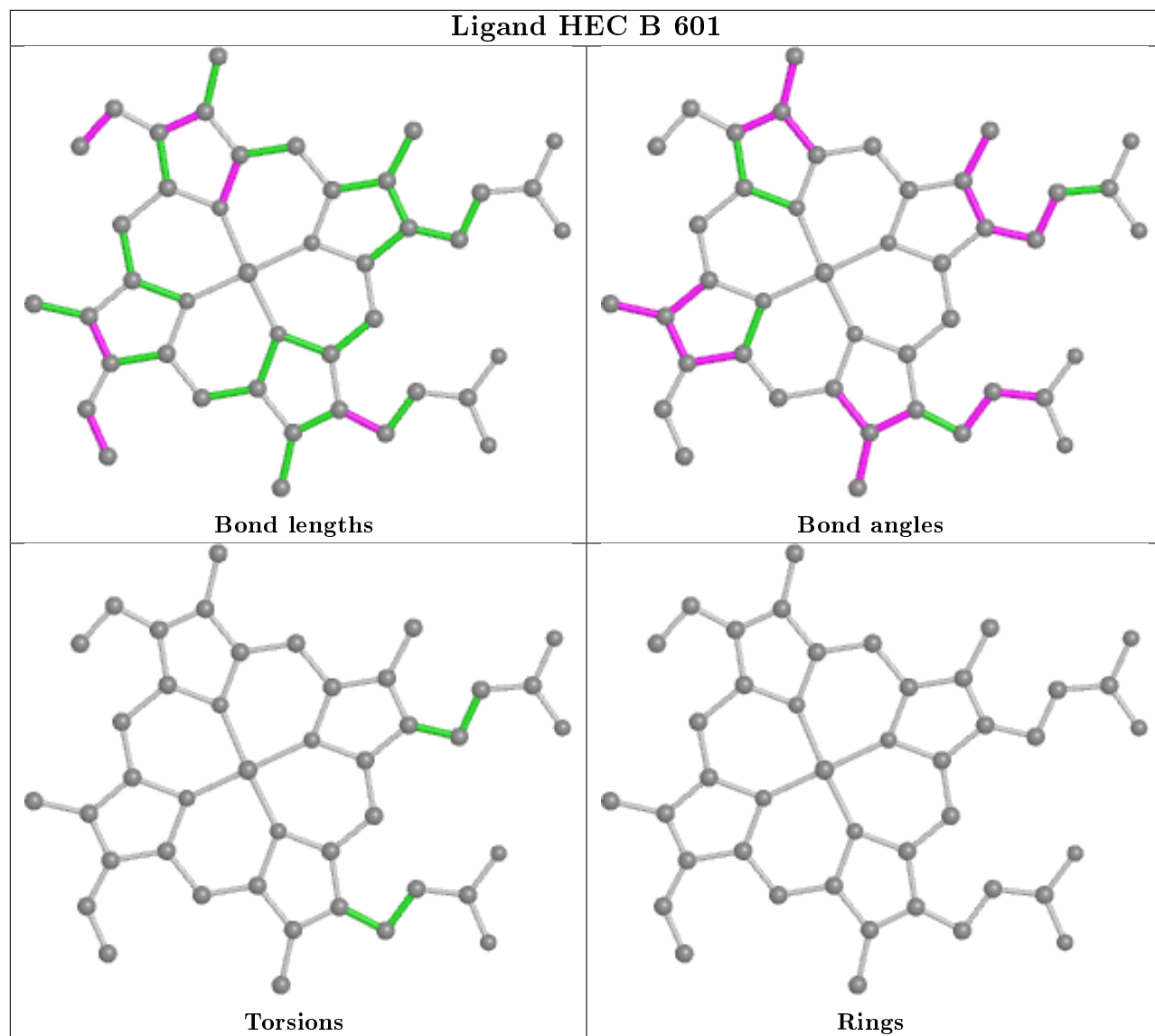
There are no ring outliers.

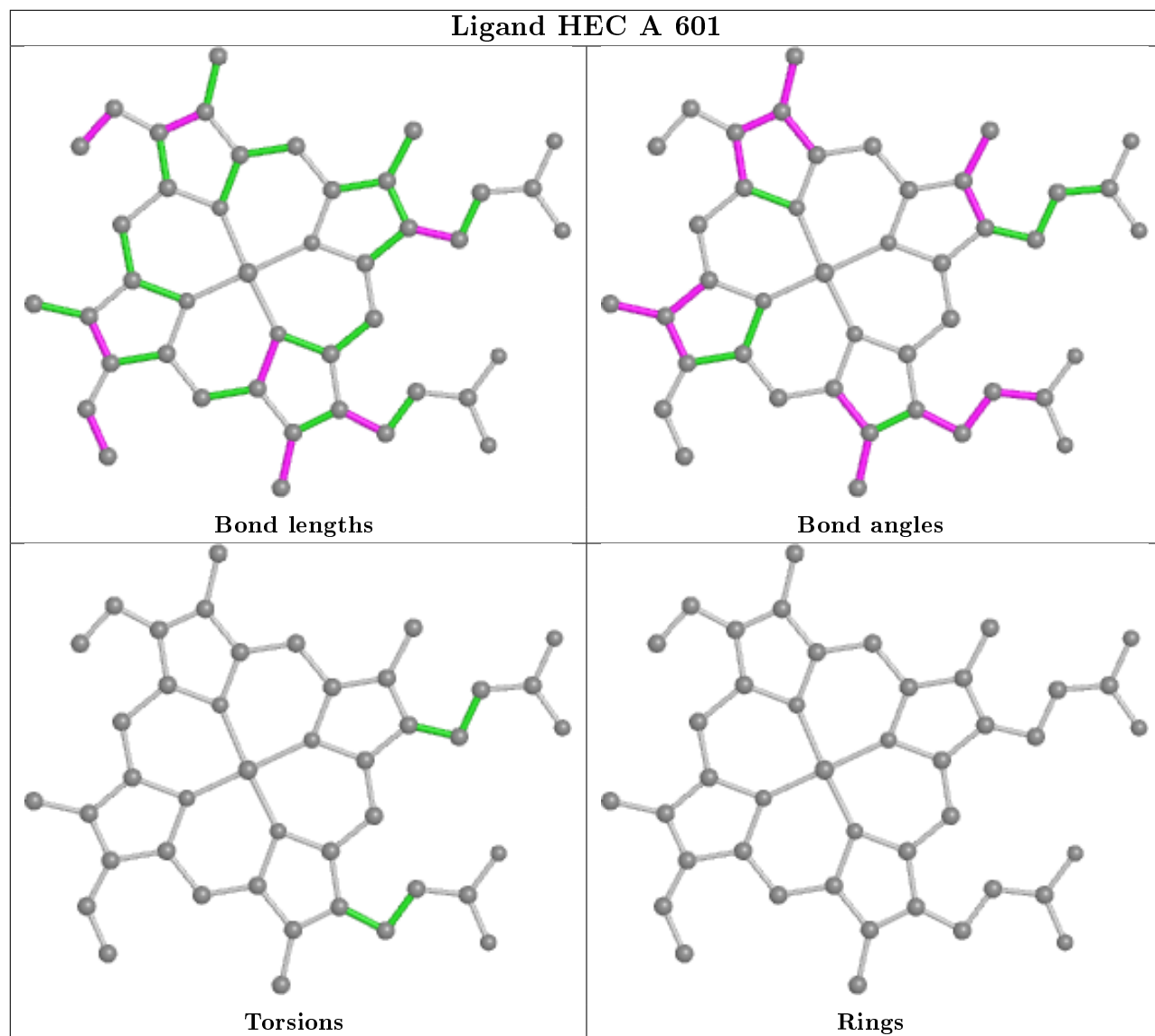
5 monomers are involved in 9 short contacts:

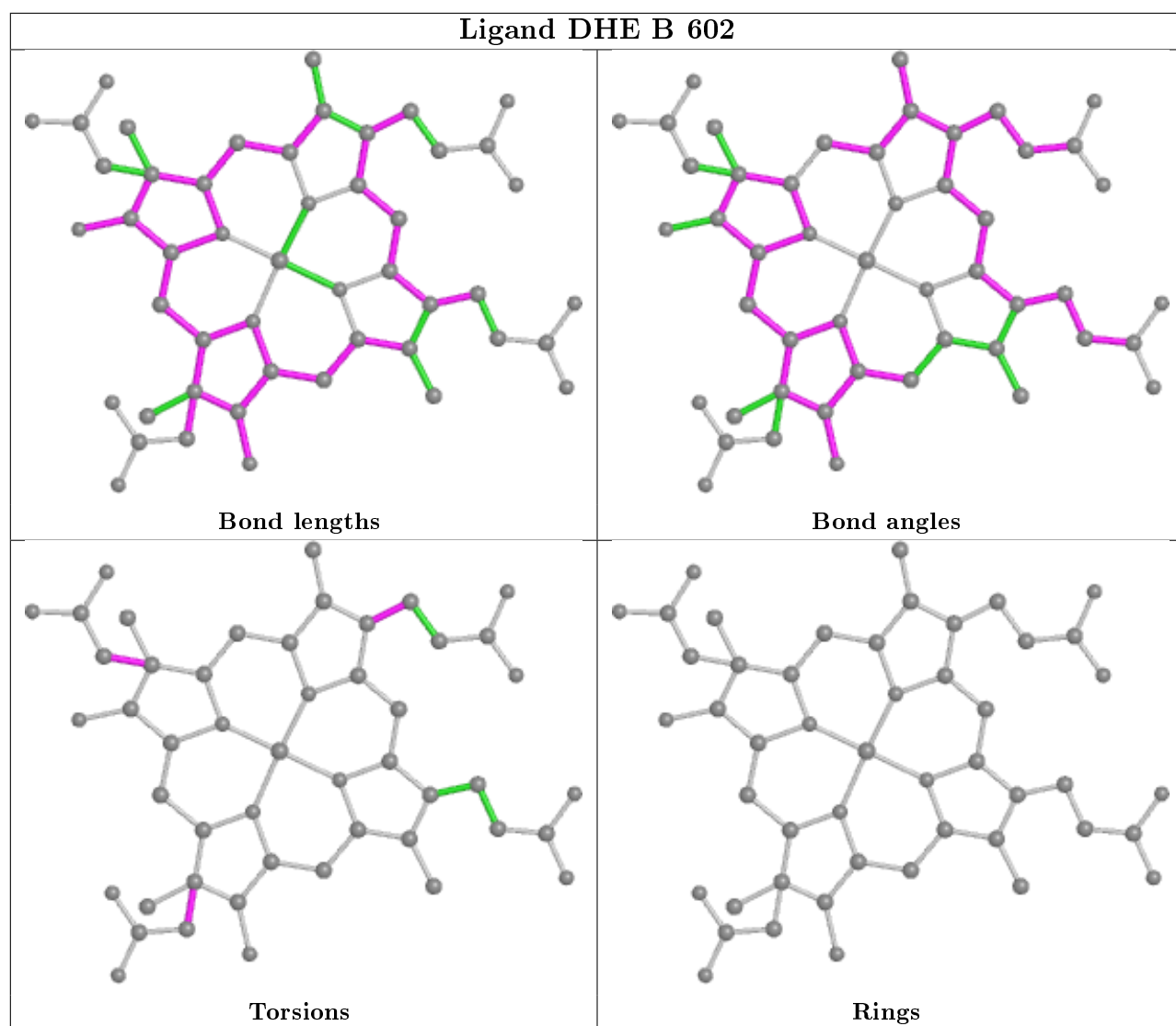
Mol	Chain	Res	Type	Clashes	Symm-Clashes
3	A	602	DHE	2	0
2	B	601	HEC	2	0
2	A	601	HEC	2	0
3	B	602	DHE	2	0
5	B	622	SO4	1	0

The following is a two-dimensional graphical depiction of Mogul quality analysis of bond lengths, bond angles, torsion angles, and ring geometry for all instances of the Ligand of Interest. In addition, ligands with molecular weight > 250 and outliers as shown on the validation Tables will also be included. For torsion angles, if less than 5% of the Mogul distribution of torsion angles is within 10 degrees of the torsion angle in question, then that torsion angle is considered an outlier. Any bond that is central to one or more torsion angles identified as an outlier by Mogul will be highlighted in the graph. For rings, the root-mean-square deviation (RMSD) between the ring in question and similar rings identified by Mogul is calculated over all ring torsion angles. If the average RMSD is greater than 60 degrees and the minimal RMSD between the ring in question and any Mogul-identified rings is also greater than 60 degrees, then that ring is considered an outlier. The outliers are highlighted in purple. The color gray indicates Mogul did not find sufficient equivalents in the CSD to analyse the geometry.









5.7 Other polymers [i](#)

There are no such residues in this entry.

5.8 Polymer linkage issues [i](#)

There are no chain breaks in this entry.

6 Fit of model and data ⓘ

6.1 Protein, DNA and RNA chains ⓘ

In the following table, the column labelled ‘#RSRZ> 2’ contains the number (and percentage) of RSRZ outliers, followed by percent RSRZ outliers for the chain as percentile scores relative to all X-ray entries and entries of similar resolution. The OWAB column contains the minimum, median, 95th percentile and maximum values of the occupancy-weighted average B-factor per residue. The column labelled ‘Q< 0.9’ lists the number of (and percentage) of residues with an average occupancy less than 0.9.

Mol	Chain	Analysed	<RSRZ>	#RSRZ>2	OWAB(Å ²)	Q<0.9
1	A	526/567 (92%)	-0.27	10 (1%) 66 71	17, 26, 43, 75	0
1	B	529/567 (93%)	-0.19	7 (1%) 77 80	17, 26, 46, 66	0
All	All	1055/1134 (93%)	-0.23	17 (1%) 72 75	17, 26, 44, 75	0

All (17) RSRZ outliers are listed below:

Mol	Chain	Res	Type	RSRZ
1	A	48	ALA	5.4
1	B	44	GLU	4.7
1	B	47	SER	4.6
1	A	46	VAL	3.8
1	A	153	GLU	3.6
1	A	502	GLN	3.5
1	A	499	THR	3.2
1	B	482	GLY	3.0
1	A	500	GLU	2.9
1	A	47	SER	2.9
1	B	87	ARG	2.5
1	A	482	GLY	2.4
1	A	44	GLU	2.3
1	A	548	GLU	2.3
1	B	483	SER	2.1
1	B	83	PRO	2.0
1	B	46	VAL	2.0

6.2 Non-standard residues in protein, DNA, RNA chains ⓘ

There are no non-standard protein/DNA/RNA residues in this entry.

6.3 Carbohydrates [i](#)

There are no carbohydrates in this entry.

6.4 Ligands [i](#)

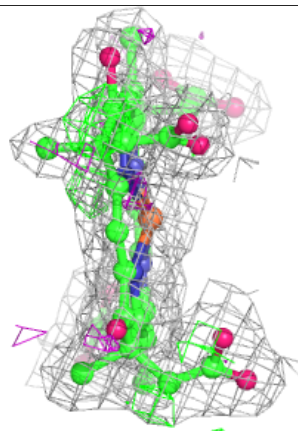
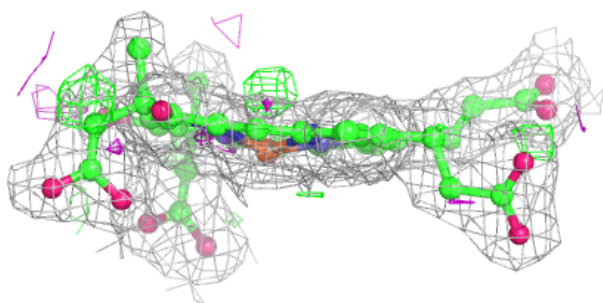
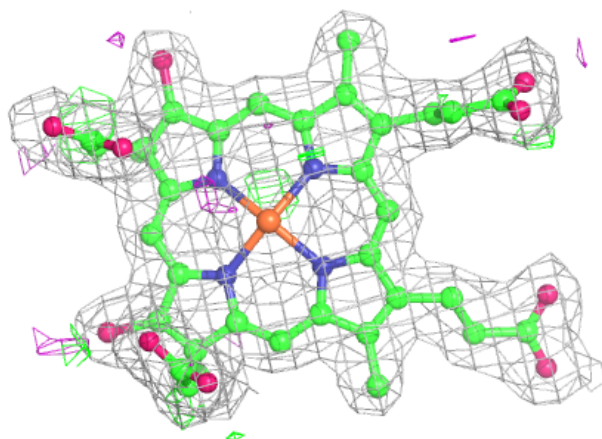
In the following table, the Atoms column lists the number of modelled atoms in the group and the number defined in the chemical component dictionary. The B-factors column lists the minimum, median, 95th percentile and maximum values of B factors of atoms in the group. The column labelled 'Q< 0.9' lists the number of atoms with occupancy less than 0.9.

Mol	Type	Chain	Res	Atoms	RSCC	RSR	B-factors(Å ²)	Q<0.9
4	NHE	B	611	13/13	0.82	0.34	24,26,33,34	0
5	SO4	B	622	5/5	0.90	0.29	55,56,58,58	0
5	SO4	B	623	5/5	0.94	0.13	56,56,56,57	0
3	DHE	B	602	49/49	0.96	0.10	17,20,24,26	0
3	DHE	A	602	49/49	0.96	0.10	17,21,24,25	0
5	SO4	B	621	5/5	0.97	0.10	39,39,40,40	0
2	HEC	A	601	43/43	0.97	0.09	14,17,21,23	0
2	HEC	B	601	43/43	0.98	0.10	21,23,26,28	0

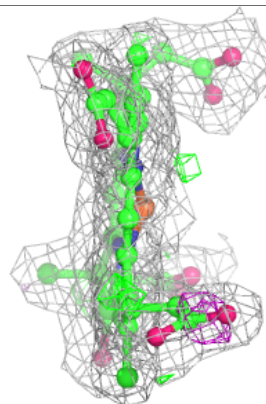
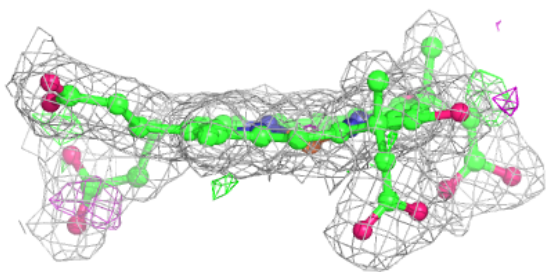
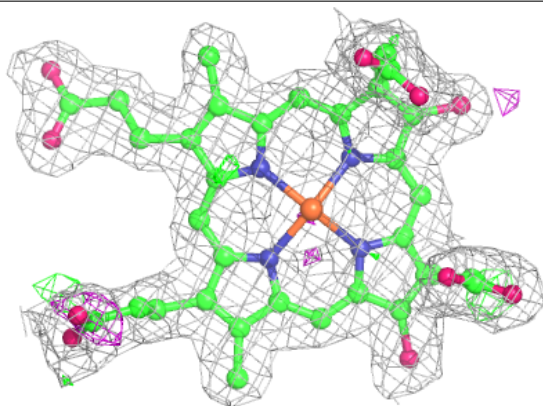
The following is a graphical depiction of the model fit to experimental electron density of all instances of the Ligand of Interest. In addition, ligands with molecular weight > 250 and outliers as shown on the geometry validation Tables will also be included. Each fit is shown from different orientation to approximate a three-dimensional view.

Electron density around DHE B 602:

$2mF_o-DF_c$ (at 0.7 rmsd) in gray
 mF_o-DF_c (at 3 rmsd) in purple (negative)
and green (positive)

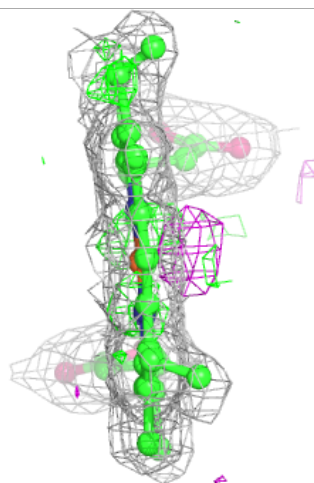
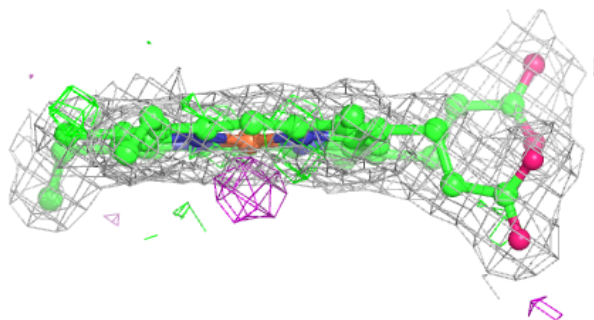
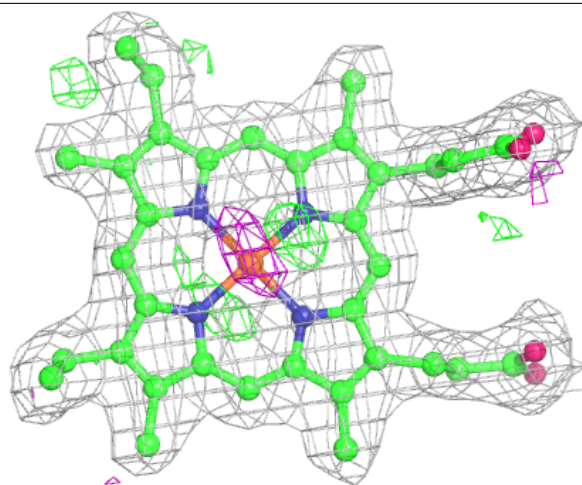
**Electron density around DHE A 602:**

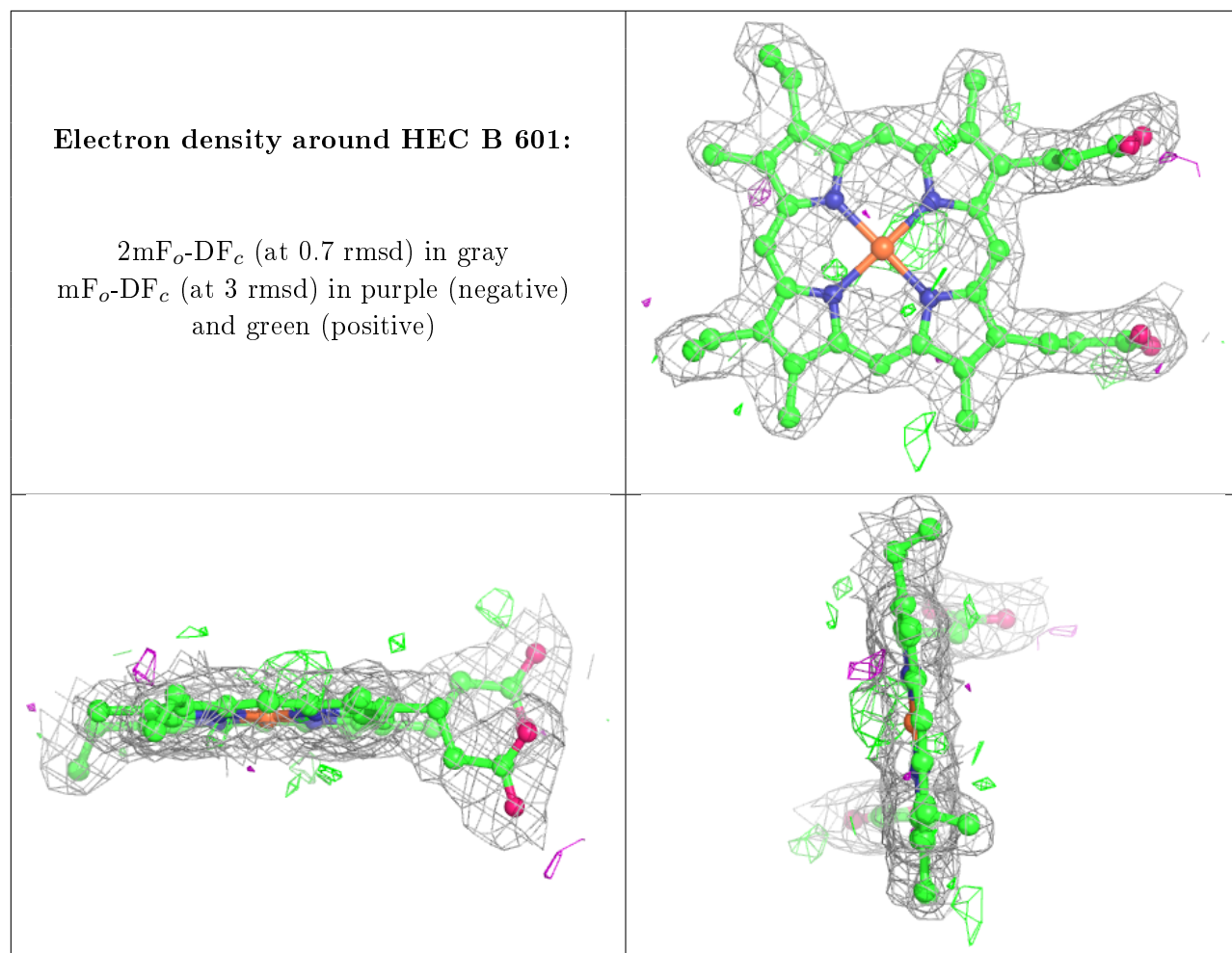
$2mF_o-DF_c$ (at 0.7 rmsd) in gray
 mF_o-DF_c (at 3 rmsd) in purple (negative)
and green (positive)



Electron density around HEC A 601:

$2mF_o-DF_c$ (at 0.7 rmsd) in gray
 mF_o-DF_c (at 3 rmsd) in purple (negative)
and green (positive)





6.5 Other polymers ⓘ

There are no such residues in this entry.