



# Full wwPDB X-ray Structure Validation Report ⓘ

May 26, 2020 – 09:26 pm BST

PDB ID : 4HBP  
Title : Crystal Structure of FAAH in complex with inhibitor  
Authors : Behnke, C.; Skene, R.J.  
Deposited on : 2012-09-28  
Resolution : 2.91 Å(reported)

This is a Full wwPDB X-ray Structure Validation Report for a publicly released PDB entry.

We welcome your comments at [validation@mail.wwpdb.org](mailto:validation@mail.wwpdb.org)

A user guide is available at

<https://www.wwpdb.org/validation/2017/XrayValidationReportHelp>

with specific help available everywhere you see the ⓘ symbol.

---

The following versions of software and data (see [references ⓘ](#)) were used in the production of this report:

MolProbity : 4.02b-467  
Mogul : 1.8.5 (274361), CSD as541be (2020)  
Xtriage (Phenix) : 1.13  
EDS : 2.11  
buster-report : 1.1.7 (2018)  
Percentile statistics : 20191225.v01 (using entries in the PDB archive December 25th 2019)  
Refmac : 5.8.0158  
CCP4 : 7.0.044 (Gargrove)  
Ideal geometry (proteins) : Engh & Huber (2001)  
Ideal geometry (DNA, RNA) : Parkinson et al. (1996)  
Validation Pipeline (wwPDB-VP) : 2.11

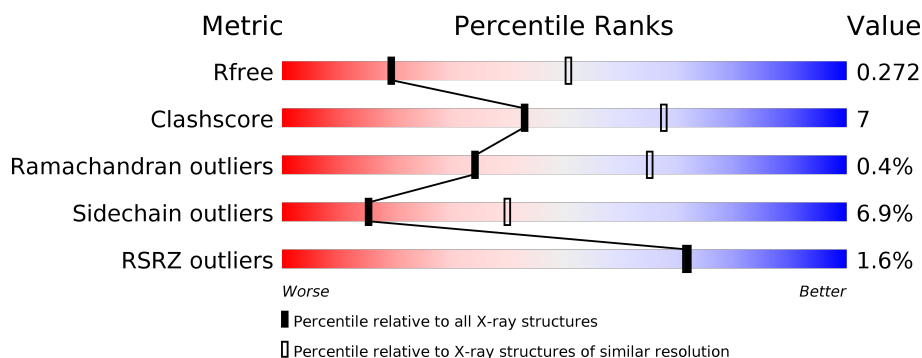
# 1 Overall quality at a glance

The following experimental techniques were used to determine the structure:

*X-RAY DIFFRACTION*

The reported resolution of this entry is 2.91 Å.

Percentile scores (ranging between 0-100) for global validation metrics of the entry are shown in the following graphic. The table shows the number of entries on which the scores are based.



Metric	Whole archive (#Entries)	Similar resolution (#Entries, resolution range(Å))
$R_{free}$	130704	2307 (2.94-2.90)
Clashscore	141614	2531 (2.94-2.90)
Ramachandran outliers	138981	2462 (2.94-2.90)
Sidechain outliers	138945	2464 (2.94-2.90)
RSRZ outliers	127900	2248 (2.94-2.90)

The table below summarises the geometric issues observed across the polymeric chains and their fit to the electron density. The red, orange, yellow and green segments on the lower bar indicate the fraction of residues that contain outliers for  $\geq 3$ , 2, 1 and 0 types of geometric quality criteria respectively. A grey segment represents the fraction of residues that are not modelled. The numeric value for each fraction is indicated below the corresponding segment, with a dot representing fractions  $\leq 5\%$ . The upper red bar (where present) indicates the fraction of residues that have poor fit to the electron density. The numeric value is given above the bar.

Mol	Chain	Length	Quality of chain
1	A	550	<div> <div>2%</div> <div> <div></div> <div>79%</div> <div>17%</div> <div>..</div> </div> </div>
1	B	550	<div> <div>%</div> <div> <div></div> <div>79%</div> <div>18%</div> <div>..</div> </div> </div>

## 2 Entry composition [i](#)

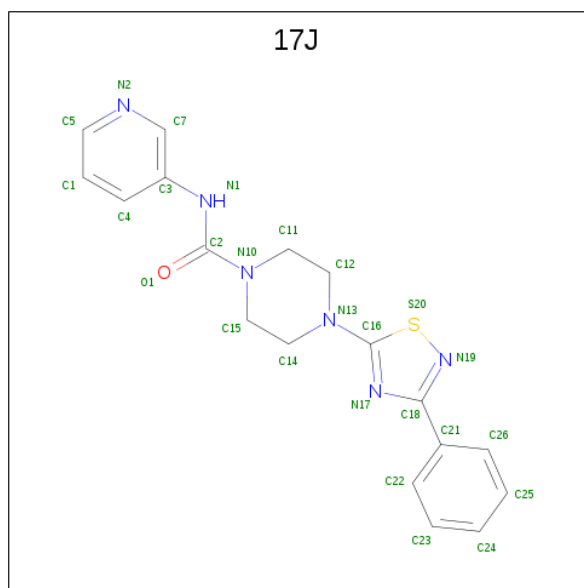
There are 3 unique types of molecules in this entry. The entry contains 8118 atoms, of which 0 are hydrogens and 0 are deuteriums.

In the tables below, the ZeroOcc column contains the number of atoms modelled with zero occupancy, the AltConf column contains the number of residues with at least one atom in alternate conformation and the Trace column contains the number of residues modelled with at most 2 atoms.

- Molecule 1 is a protein called Fatty-acid amide hydrolase 1.

Mol	Chain	Residues	Atoms					ZeroOcc	AltConf	Trace
1	A	531	Total	C	N	O	S	0	1	0
			4014	2576	673	736	29			
1	B	535	Total	C	N	O	S	0	2	0
			4038	2586	682	740	30			

- Molecule 2 is 4-(3-phenyl-1,2,4-thiadiazol-5-yl)-N-(pyridin-3-yl)piperazine-1-carboxamide (three-letter code: 17J) (formula: C<sub>18</sub>H<sub>18</sub>N<sub>6</sub>OS).



Mol	Chain	Residues	Atoms					ZeroOcc	AltConf
2	A	1	Total	C	N	O	S	0	0
			19	13	4	1	1		
2	B	1	Total	C	N	O	S	0	0
			19	13	4	1	1		

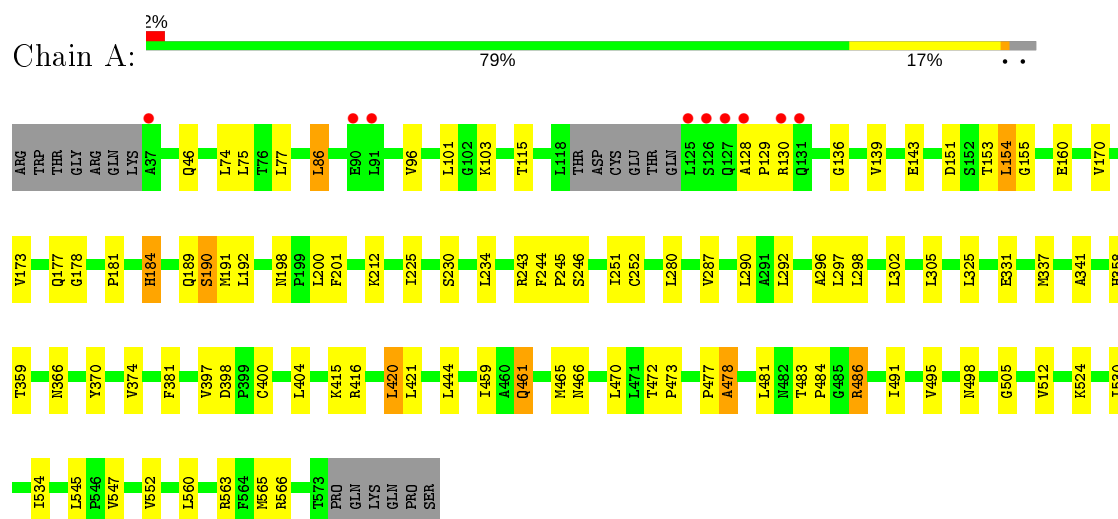
- Molecule 3 is water.

Mol	Chain	Residues	Atoms		ZeroOcc	AltConf
3	A	17	Total 17	O 17	0	0
3	B	11	Total 11	O 11	0	0

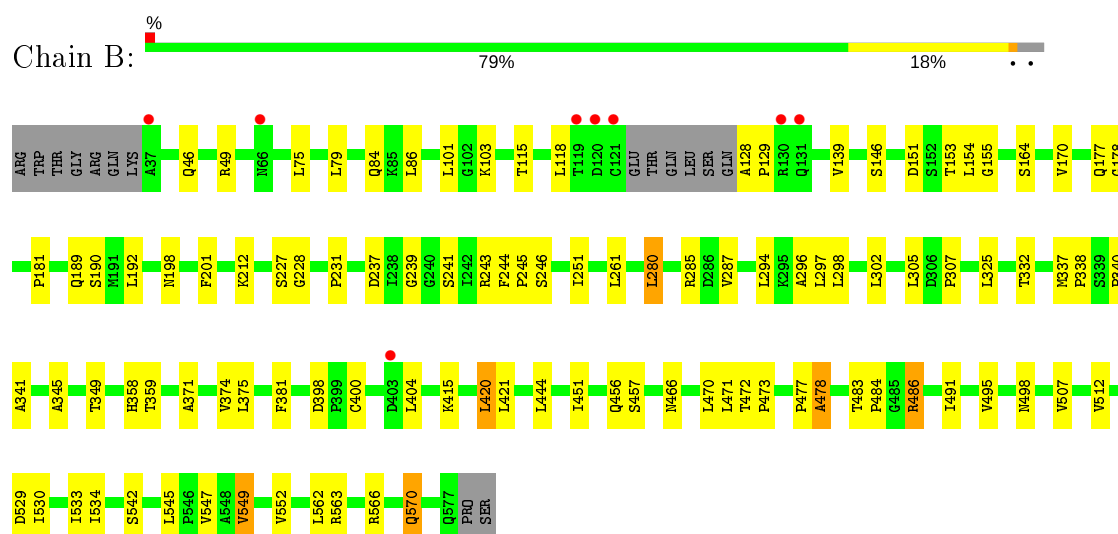
### 3 Residue-property plots [i](#)

These plots are drawn for all protein, RNA and DNA chains in the entry. The first graphic for a chain summarises the proportions of the various outlier classes displayed in the second graphic. The second graphic shows the sequence view annotated by issues in geometry and electron density. Residues are color-coded according to the number of geometric quality criteria for which they contain at least one outlier: green = 0, yellow = 1, orange = 2 and red = 3 or more. A red dot above a residue indicates a poor fit to the electron density ( $RSRZ > 2$ ). Stretches of 2 or more consecutive residues without any outlier are shown as a green connector. Residues present in the sample, but not in the model, are shown in grey.

#### • Molecule 1: Fatty-acid amide hydrolase 1



#### • Molecule 1: Fatty-acid amide hydrolase 1



## 4 Data and refinement statistics

Property	Value	Source
Space group	P 32 2 1	Depositor
Cell constants a, b, c, $\alpha$ , $\beta$ , $\gamma$	103.92Å 103.92Å 251.97Å 90.00° 90.00° 120.00°	Depositor
Resolution (Å)	48.06 – 2.91 48.03 – 2.91	Depositor EDS
% Data completeness (in resolution range)	100.0 (48.06-2.91) 99.1 (48.03-2.91)	Depositor EDS
$R_{merge}$	(Not available)	Depositor
$R_{sym}$	(Not available)	Depositor
$\langle I/\sigma(I) \rangle$ <sup>1</sup>	3.06 (at 2.91Å)	Xtriage
Refinement program	REFMAC 5.2.0005	Depositor
R, $R_{free}$	0.223 , 0.273 0.222 , 0.272	Depositor DCC
$R_{free}$ test set	1762 reflections (5.02%)	wwPDB-VP
Wilson B-factor (Å <sup>2</sup> )	47.1	Xtriage
Anisotropy	0.158	Xtriage
Bulk solvent $k_{sol}$ (e/Å <sup>3</sup> ), $B_{sol}$ (Å <sup>2</sup> )	0.34 , 37.6	EDS
L-test for twinning <sup>2</sup>	$\langle  L  \rangle = 0.50$ , $\langle L^2 \rangle = 0.33$	Xtriage
Estimated twinning fraction	0.022 for -h,-k,l	Xtriage
$F_o, F_c$ correlation	0.91	EDS
Total number of atoms	8118	wwPDB-VP
Average B, all atoms (Å <sup>2</sup> )	40.0	wwPDB-VP

Xtriage's analysis on translational NCS is as follows: *The largest off-origin peak in the Patterson function is 2.91% of the height of the origin peak. No significant pseudotranslation is detected.*

<sup>1</sup>Intensities estimated from amplitudes.

<sup>2</sup>Theoretical values of  $\langle |L| \rangle$ ,  $\langle L^2 \rangle$  for acentric reflections are 0.5, 0.333 respectively for untwinned datasets, and 0.375, 0.2 for perfectly twinned datasets.

## 5 Model quality [i](#)

### 5.1 Standard geometry [i](#)

Bond lengths and bond angles in the following residue types are not validated in this section: 17J

The Z score for a bond length (or angle) is the number of standard deviations the observed value is removed from the expected value. A bond length (or angle) with  $|Z| > 5$  is considered an outlier worth inspection. RMSZ is the root-mean-square of all Z scores of the bond lengths (or angles).

Mol	Chain	Bond lengths		Bond angles	
		RMSZ	$\# Z  > 5$	RMSZ	$\# Z  > 5$
1	A	0.35	0/4109	0.55	1/5589 (0.0%)
1	B	0.34	0/4139	0.54	1/5631 (0.0%)
All	All	0.35	0/8248	0.55	2/11220 (0.0%)

There are no bond length outliers.

All (2) bond angle outliers are listed below:

Mol	Chain	Res	Type	Atoms	Z	Observed(°)	Ideal(°)
1	B	420	LEU	CA-CB-CG	5.84	128.73	115.30
1	A	420	LEU	CA-CB-CG	5.28	127.43	115.30

There are no chirality outliers.

There are no planarity outliers.

### 5.2 Too-close contacts [i](#)

In the following table, the Non-H and H(model) columns list the number of non-hydrogen atoms and hydrogen atoms in the chain respectively. The H(added) column lists the number of hydrogen atoms added and optimized by MolProbity. The Clashes column lists the number of clashes within the asymmetric unit, whereas Symm-Clashes lists symmetry related clashes.

Mol	Chain	Non-H	H(model)	H(added)	Clashes	Symm-Clashes
1	A	4014	0	4018	56	0
1	B	4038	0	4024	55	0
2	A	19	0	13	0	0
2	B	19	0	13	2	0
3	A	17	0	0	0	0
3	B	11	0	0	0	0
All	All	8118	0	8068	110	0

The all-atom clashscore is defined as the number of clashes found per 1000 atoms (including hydrogen atoms). The all-atom clashscore for this structure is 7.

All (110) close contacts within the same asymmetric unit are listed below, sorted by their clash magnitude.

Atom-1	Atom-2	Interatomic distance (Å)	Clash overlap (Å)
1:A:325:LEU:H	1:A:358:HIS:HD2	1.28	0.79
1:B:325:LEU:H	1:B:358:HIS:HD2	1.35	0.74
1:A:243:ARG:HH22	1:A:498:ASN:HD21	1.39	0.70
1:A:151:ASP:HB3	1:A:153:THR:HG23	1.75	0.68
1:A:192:LEU:HD21	1:A:381:PHE:HZ	1.58	0.68
1:A:243:ARG:HH22	1:A:498:ASN:ND2	1.90	0.67
1:A:243:ARG:NH2	1:A:498:ASN:HD21	1.92	0.67
1:A:287:VAL:HG21	1:A:566:ARG:HA	1.77	0.66
1:B:151:ASP:HB3	1:B:153:THR:HG23	1.77	0.66
1:A:486:ARG:HB3	1:A:486:ARG:HH21	1.61	0.65
1:B:287:VAL:HG21	1:B:566:ARG:HA	1.78	0.65
1:A:75:LEU:HD13	1:A:103:LYS:HD3	1.80	0.64
1:B:325:LEU:H	1:B:358:HIS:CD2	2.16	0.63
1:A:370:TYR:O	1:A:374:VAL:HG12	2.00	0.61
1:A:366:ASN:HD22	1:A:461:GLN:HE22	1.48	0.60
1:B:192:LEU:HD21	1:B:381:PHE:HZ	1.69	0.57
1:B:153:THR:C	1:B:155:GLY:H	2.08	0.57
1:A:177:GLN:HG2	1:A:296:ALA:HB1	1.86	0.57
1:B:294:LEU:HD12	1:B:562:LEU:HD11	1.87	0.57
1:A:477:PRO:O	1:A:478:ALA:HB2	2.04	0.56
1:B:192:LEU:HD23	1:B:404:LEU:HD21	1.87	0.56
1:B:477:PRO:O	1:B:478:ALA:HB2	2.05	0.56
1:A:366:ASN:HD22	1:A:461:GLN:NE2	2.03	0.56
1:A:153:THR:C	1:A:155:GLY:H	2.09	0.55
1:A:337:MET:SD	1:A:524:LYS:O	2.64	0.55
1:B:302:LEU:O	1:B:305:LEU:O	2.25	0.55
1:B:189:GLN:NE2	1:B:398:ASP:H	2.04	0.55
1:B:177:GLN:HG2	1:B:296:ALA:HB1	1.90	0.54
1:B:375:LEU:HD22	1:B:451:ILE:HG13	1.89	0.54
1:A:325:LEU:H	1:A:358:HIS:CD2	2.18	0.54
1:B:239:GLY:HA3	2:B:600:17J:H3	1.88	0.54
1:B:349:THR:HG23	1:B:471:LEU:HD21	1.89	0.54
1:B:198:ASN:ND2	1:B:201:PHE:H	2.06	0.52
1:B:349:THR:HG21	1:B:549:VAL:HG21	1.91	0.52
1:B:153:THR:O	1:B:155:GLY:N	2.43	0.52
1:A:530:ILE:HG13	1:A:534:ILE:HD12	1.90	0.52
1:B:472:THR:HG22	1:B:473:PRO:O	2.10	0.52

*Continued on next page...*

*Continued from previous page...*

Atom-1	Atom-2	Interatomic distance (Å)	Clash overlap (Å)
1:A:302:LEU:O	1:A:305:LEU:O	2.27	0.52
1:B:198:ASN:HD21	1:B:201:PHE:H	1.58	0.52
1:A:341:ALA:HB1	1:A:547:VAL:HG21	1.92	0.51
1:B:477:PRO:HB3	1:B:512:VAL:HG21	1.92	0.51
1:B:212:LYS:HG3	1:B:545:LEU:HD11	1.91	0.51
1:B:486:ARG:HB2	1:B:534:ILE:HD13	1.92	0.51
1:B:129:PRO:HD2	1:B:178:GLY:HA2	1.93	0.51
1:A:212:LYS:HG3	1:A:545:LEU:HD11	1.92	0.51
1:B:79:LEU:HD13	1:B:231:PRO:HB2	1.93	0.51
1:A:198:ASN:ND2	1:A:201:PHE:H	2.09	0.50
1:A:370:TYR:CE1	1:A:374:VAL:HG11	2.47	0.50
1:B:192:LEU:HD21	1:B:381:PHE:CZ	2.46	0.49
1:B:495:VAL:HA	1:B:498:ASN:HD22	1.77	0.49
1:B:139:VAL:O	1:B:181:PRO:HA	2.13	0.49
1:B:243:ARG:HH22	1:B:498:ASN:ND2	2.11	0.49
1:B:243:ARG:NH2	1:B:498:ASN:HD21	2.10	0.49
1:B:341:ALA:HB1	1:B:547:VAL:HG21	1.95	0.49
1:A:252:CYS:HB3	1:A:290:LEU:HD11	1.93	0.48
1:A:189:GLN:NE2	1:A:398:ASP:H	2.11	0.48
1:A:192:LEU:HD21	1:A:381:PHE:CZ	2.45	0.48
1:A:198:ASN:HD21	1:A:201:PHE:H	1.61	0.48
1:A:477:PRO:HB3	1:A:512:VAL:HG21	1.96	0.48
1:A:153:THR:O	1:A:155:GLY:N	2.47	0.48
1:A:139:VAL:O	1:A:181:PRO:HA	2.14	0.47
1:B:345:ALA:O	1:B:349:THR:HG22	2.15	0.47
1:A:129:PRO:HD2	1:A:178:GLY:HA2	1.95	0.47
1:A:477:PRO:O	1:A:478:ALA:CB	2.63	0.47
1:A:244:PHE:HB2	1:A:245:PRO:HD3	1.96	0.47
1:A:143:GLU:HA	1:A:184:HIS:CD2	2.50	0.47
1:A:505:GLY:HA3	1:A:565:MET:SD	2.54	0.47
1:B:75:LEU:HD13	1:B:103:LYS:HD3	1.97	0.47
1:A:472:THR:HG22	1:A:473:PRO:O	2.15	0.46
1:A:198:ASN:HD22	1:A:200:LEU:H	1.64	0.46
1:A:192:LEU:HD23	1:A:404:LEU:HD21	1.96	0.46
1:B:244:PHE:HB2	1:B:245:PRO:HD3	1.97	0.46
1:B:237:ASP:HA	1:B:241:SER:HB2	1.98	0.46
1:B:470:LEU:HB3	1:B:552:VAL:HB	1.97	0.46
1:A:459:ILE:HD13	1:B:307:PRO:HD2	1.98	0.45
1:B:228:GLY:HA2	1:B:285:ARG:NH2	2.32	0.45
1:B:371:ALA:HA	1:B:375:LEU:HD12	1.99	0.45
1:B:239:GLY:CA	2:B:600:17J:H3	2.47	0.45

*Continued on next page...*

*Continued from previous page...*

Atom-1	Atom-2	Interatomic distance (Å)	Clash overlap (Å)
1:B:246:SER:HA	1:B:251:ILE:HG13	1.99	0.45
1:A:74:LEU:HD11	1:A:96:VAL:HG12	2.00	0.44
1:B:189:GLN:HE22	1:B:398:ASP:H	1.64	0.44
1:A:225:ILE:HG13	1:A:230:SER:HB3	1.99	0.44
1:B:566:ARG:O	1:B:570:GLN:HB2	2.16	0.44
1:A:128:ALA:HA	1:A:129:PRO:HD3	1.86	0.44
1:A:189:GLN:HE22	1:A:398:ASP:H	1.66	0.44
1:B:477:PRO:O	1:B:478:ALA:CB	2.66	0.43
1:B:146:SER:HB2	1:B:164:SER:OG	2.19	0.43
1:A:470:LEU:HB3	1:A:552:VAL:HB	2.01	0.43
1:A:190:SER:O	1:A:191:MET:HB2	2.19	0.43
1:B:153:THR:C	1:B:155:GLY:N	2.72	0.43
1:A:366:ASN:H	1:A:461:GLN:HE22	1.67	0.42
1:A:189:GLN:HE22	1:A:397:VAL:HA	1.85	0.42
1:A:225:ILE:HG22	1:A:251:ILE:HG21	2.02	0.42
1:A:483:THR:N	1:A:484:PRO:CD	2.82	0.42
1:A:486:ARG:NH2	1:A:486:ARG:HB3	2.31	0.42
1:A:246:SER:HA	1:A:251:ILE:HG13	2.01	0.42
1:A:153:THR:C	1:A:155:GLY:N	2.73	0.42
1:B:483:THR:N	1:B:484:PRO:CD	2.82	0.42
1:B:337:MET:HA	1:B:338:PRO:HD3	1.97	0.41
1:A:86:LEU:HG	1:A:136:GLY:HA3	2.02	0.41
1:B:128:ALA:HA	1:B:129:PRO:HD3	1.88	0.41
1:A:170:VAL:HA	1:A:173:VAL:HG22	2.03	0.41
1:A:244:PHE:HZ	1:A:491:ILE:HA	1.85	0.41
1:A:495:VAL:HA	1:A:498:ASN:HD22	1.85	0.41
1:B:170:VAL:HG11	1:B:280:LEU:HD11	2.02	0.41
1:B:243:ARG:HH22	1:B:498:ASN:HD21	1.68	0.41
1:B:244:PHE:HZ	1:B:491:ILE:HA	1.86	0.40
1:B:529:ASP:O	1:B:533:ILE:HG12	2.20	0.40
1:B:261:LEU:HD12	1:B:280:LEU:O	2.21	0.40
1:B:530:ILE:HG13	1:B:534:ILE:HD12	2.03	0.40

There are no symmetry-related clashes.

## 5.3 Torsion angles

### 5.3.1 Protein backbone

In the following table, the Percentiles column shows the percent Ramachandran outliers of the chain as a percentile score with respect to all X-ray entries followed by that with respect to entries

of similar resolution.

The Analysed column shows the number of residues for which the backbone conformation was analysed, and the total number of residues.

Mol	Chain	Analysed	Favoured	Allowed	Outliers	Percentiles	
1	A	528/550 (96%)	508 (96%)	18 (3%)	2 (0%)	34	65
1	B	533/550 (97%)	511 (96%)	20 (4%)	2 (0%)	34	65
All	All	1061/1100 (96%)	1019 (96%)	38 (4%)	4 (0%)	34	65

All (4) Ramachandran outliers are listed below:

Mol	Chain	Res	Type
1	A	478	ALA
1	B	478	ALA
1	B	154	LEU
1	A	154	LEU

### 5.3.2 Protein sidechains ⓘ

In the following table, the Percentiles column shows the percent sidechain outliers of the chain as a percentile score with respect to all X-ray entries followed by that with respect to entries of similar resolution.

The Analysed column shows the number of residues for which the sidechain conformation was analysed, and the total number of residues.

Mol	Chain	Analysed	Rotameric	Outliers	Percentiles	
1	A	433/467 (93%)	403 (93%)	30 (7%)	15	40
1	B	434/467 (93%)	404 (93%)	30 (7%)	15	40
All	All	867/934 (93%)	807 (93%)	60 (7%)	15	40

All (60) residues with a non-rotameric sidechain are listed below:

Mol	Chain	Res	Type
1	A	46	GLN
1	A	77	LEU
1	A	86	LEU
1	A	101	LEU
1	A	115	THR
1	A	130	ARG
1	A	154	LEU
1	A	160	GLU

*Continued on next page...*

*Continued from previous page...*

Mol	Chain	Res	Type
1	A	184	HIS
1	A	190	SER
1	A	234	LEU
1	A	280	LEU
1	A	292	LEU
1	A	297	LEU
1	A	298	LEU
1	A	331	GLU
1	A	359	THR
1	A	400	CYS
1	A	415	LYS
1	A	416	ARG
1	A	420	LEU
1	A	421	LEU
1	A	444	LEU
1	A	461	GLN
1	A	465	MET
1	A	466	ASN
1	A	481	LEU
1	A	486	ARG
1	A	560	LEU
1	A	563	ARG
1	B	46	GLN
1	B	49	ARG
1	B	84	GLN
1	B	86	LEU
1	B	101	LEU
1	B	115	THR
1	B	118	LEU
1	B	190	SER
1	B	227	SER
1	B	280	LEU
1	B	297	LEU
1	B	298	LEU
1	B	332	THR
1	B	340	PRO
1	B	359	THR
1	B	374	VAL
1	B	400	CYS
1	B	415	LYS
1	B	420	LEU
1	B	421	LEU

*Continued on next page...*

*Continued from previous page...*

Mol	Chain	Res	Type
1	B	444	LEU
1	B	456	GLN
1	B	457	SER
1	B	466	ASN
1	B	486	ARG
1	B	507	VAL
1	B	542	SER
1	B	549	VAL
1	B	563	ARG
1	B	570	GLN

Some sidechains can be flipped to improve hydrogen bonding and reduce clashes. All (28) such sidechains are listed below:

Mol	Chain	Res	Type
1	A	48	GLN
1	A	81	GLN
1	A	159	ASN
1	A	189	GLN
1	A	198	ASN
1	A	259	ASN
1	A	334	ASN
1	A	351	GLN
1	A	358	HIS
1	A	367	ASN
1	A	461	GLN
1	A	466	ASN
1	A	498	ASN
1	B	48	GLN
1	B	81	GLN
1	B	159	ASN
1	B	189	GLN
1	B	198	ASN
1	B	203	GLN
1	B	259	ASN
1	B	334	ASN
1	B	351	GLN
1	B	358	HIS
1	B	434	ASN
1	B	456	GLN
1	B	482	ASN
1	B	498	ASN
1	B	570	GLN

### 5.3.3 RNA ⓘ

There are no RNA molecules in this entry.

## 5.4 Non-standard residues in protein, DNA, RNA chains ⓘ

There are no non-standard protein/DNA/RNA residues in this entry.

## 5.5 Carbohydrates ⓘ

There are no carbohydrates in this entry.

## 5.6 Ligand geometry ⓘ

2 ligands are modelled in this entry.

In the following table, the Counts columns list the number of bonds (or angles) for which Mogul statistics could be retrieved, the number of bonds (or angles) that are observed in the model and the number of bonds (or angles) that are defined in the Chemical Component Dictionary. The Link column lists molecule types, if any, to which the group is linked. The Z score for a bond length (or angle) is the number of standard deviations the observed value is removed from the expected value. A bond length (or angle) with  $|Z| > 2$  is considered an outlier worth inspection. RMSZ is the root-mean-square of all Z scores of the bond lengths (or angles).

Mol	Type	Chain	Res	Link	Bond lengths			Bond angles		
					Counts	RMSZ	# $ Z  > 2$	Counts	RMSZ	# $ Z  > 2$
2	17J	A	600	1	18,21,29	1.05	2 (11%)	20,28,39	2.79	7 (35%)
2	17J	B	600	1	18,21,29	1.04	2 (11%)	20,28,39	2.31	8 (40%)

In the following table, the Chirals column lists the number of chiral outliers, the number of chiral centers analysed, the number of these observed in the model and the number defined in the Chemical Component Dictionary. Similar counts are reported in the Torsion and Rings columns. '-' means no outliers of that kind were identified.

Mol	Type	Chain	Res	Link	Chirals	Torsions	Rings
2	17J	A	600	1	-	4/6/20/26	0/3/3/4
2	17J	B	600	1	-	0/6/20/26	0/3/3/4

All (4) bond length outliers are listed below:

Mol	Chain	Res	Type	Atoms	Z	Observed(Å)	Ideal(Å)
2	A	600	17J	C16-N13	2.97	1.36	1.32

*Continued on next page...*

*Continued from previous page...*

Mol	Chain	Res	Type	Atoms	Z	Observed(Å)	Ideal(Å)
2	B	600	17J	C16-N13	2.93	1.36	1.32
2	B	600	17J	C18-N19	2.25	1.37	1.34
2	A	600	17J	C18-N19	2.10	1.37	1.34

All (15) bond angle outliers are listed below:

Mol	Chain	Res	Type	Atoms	Z	Observed(°)	Ideal(°)
2	A	600	17J	C15-C14-N13	-6.22	98.62	110.70
2	A	600	17J	C14-C15-N10	-5.56	105.93	110.37
2	B	600	17J	C15-C14-N13	-5.19	100.63	110.70
2	A	600	17J	C11-C12-N13	-5.09	100.80	110.70
2	A	600	17J	C12-C11-N10	-4.84	106.51	110.37
2	B	600	17J	N17-C18-N19	-4.01	114.81	122.26
2	A	600	17J	N17-C18-N19	-4.01	114.83	122.26
2	B	600	17J	C11-N10-C15	3.43	119.67	114.08
2	B	600	17J	C11-C12-N13	-3.38	104.14	110.70
2	B	600	17J	C21-C18-N19	3.37	123.50	119.12
2	B	600	17J	C14-C15-N10	-2.81	108.12	110.37
2	B	600	17J	C12-N13-C14	-2.58	105.82	111.52
2	A	600	17J	C11-N10-C15	2.47	118.09	114.08
2	A	600	17J	C21-C18-N19	2.41	122.25	119.12
2	B	600	17J	C15-N10-C2	-2.36	119.66	122.66

There are no chirality outliers.

All (4) torsion outliers are listed below:

Mol	Chain	Res	Type	Atoms
2	A	600	17J	N19-C18-C21-C22
2	A	600	17J	N19-C18-C21-C26
2	A	600	17J	N17-C18-C21-C26
2	A	600	17J	N17-C18-C21-C22

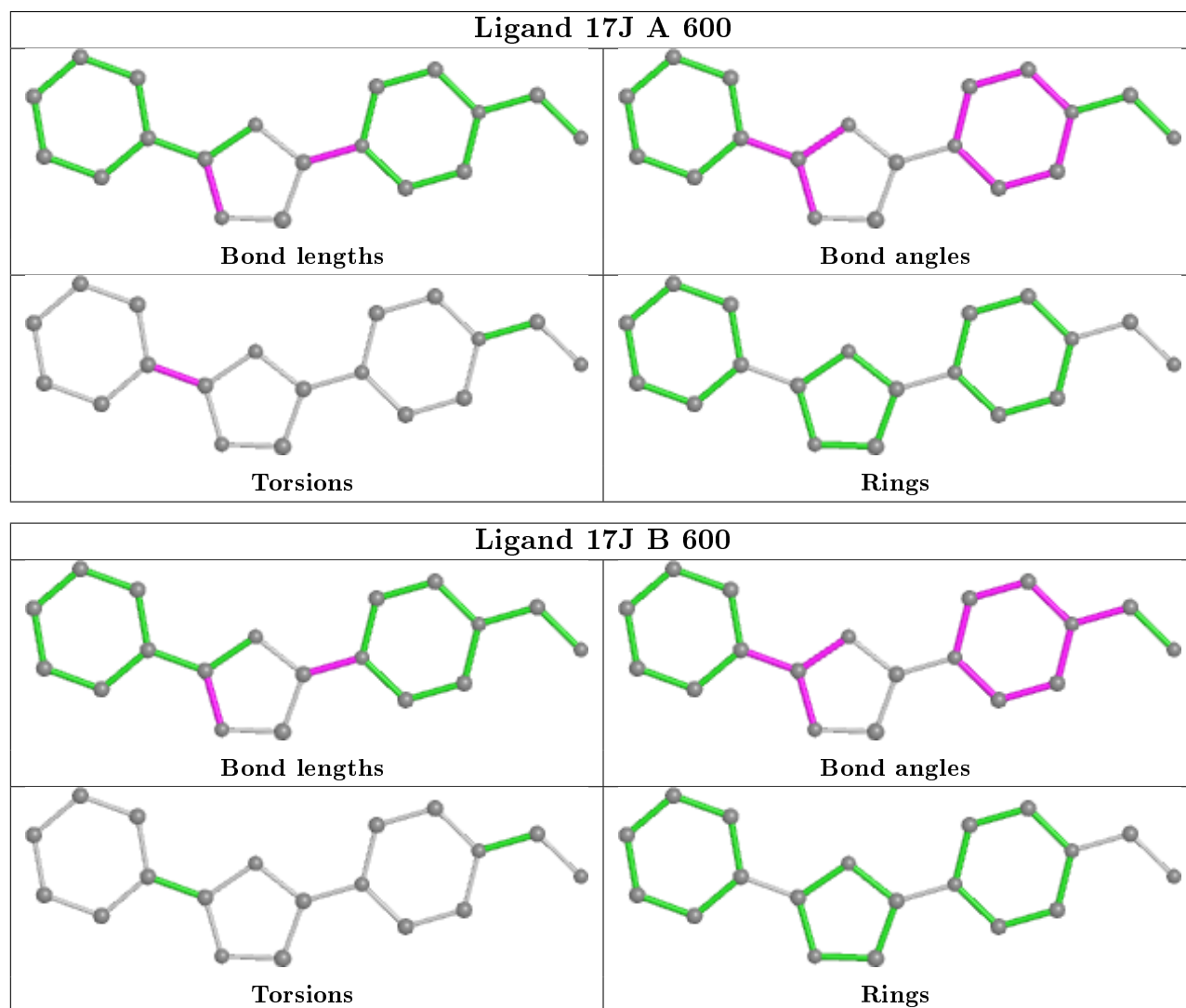
There are no ring outliers.

1 monomer is involved in 2 short contacts:

Mol	Chain	Res	Type	Clashes	Symm-Clashes
2	B	600	17J	2	0

The following is a two-dimensional graphical depiction of Mogul quality analysis of bond lengths, bond angles, torsion angles, and ring geometry for all instances of the Ligand of Interest. In addition, ligands with molecular weight > 250 and outliers as shown on the validation Tables will

also be included. For torsion angles, if less than 5% of the Mogul distribution of torsion angles is within 10 degrees of the torsion angle in question, then that torsion angle is considered an outlier. Any bond that is central to one or more torsion angles identified as an outlier by Mogul will be highlighted in the graph. For rings, the root-mean-square deviation (RMSD) between the ring in question and similar rings identified by Mogul is calculated over all ring torsion angles. If the average RMSD is greater than 60 degrees and the minimal RMSD between the ring in question and any Mogul-identified rings is also greater than 60 degrees, then that ring is considered an outlier. The outliers are highlighted in purple. The color gray indicates Mogul did not find sufficient equivalents in the CSD to analyse the geometry.



## 5.7 Other polymers ⓘ

There are no such residues in this entry.

## 5.8 Polymer linkage issues

There are no chain breaks in this entry.

## 6 Fit of model and data [i](#)

### 6.1 Protein, DNA and RNA chains [i](#)

In the following table, the column labelled ‘#RSRZ> 2’ contains the number (and percentage) of RSRZ outliers, followed by percent RSRZ outliers for the chain as percentile scores relative to all X-ray entries and entries of similar resolution. The OWAB column contains the minimum, median, 95<sup>th</sup> percentile and maximum values of the occupancy-weighted average B-factor per residue. The column labelled ‘Q< 0.9’ lists the number of (and percentage) of residues with an average occupancy less than 0.9.

Mol	Chain	Analysed	<RSRZ>	#RSRZ>2	OWAB(Å <sup>2</sup> )	Q<0.9
1	A	531/550 (96%)	-0.06	9 (1%) 70 70	25, 36, 55, 68	0
1	B	535/550 (97%)	-0.12	8 (1%) 73 73	25, 41, 68, 96	0
All	All	1066/1100 (96%)	-0.09	17 (1%) 72 71	25, 38, 62, 96	0

All (17) RSRZ outliers are listed below:

Mol	Chain	Res	Type	RSRZ
1	B	120	ASP	4.6
1	A	126	SER	4.3
1	B	131	GLN	3.5
1	A	127	GLN	3.3
1	B	121	CYS	3.1
1	A	37	ALA	2.9
1	A	91	LEU	2.7
1	A	128	ALA	2.7
1	A	131	GLN	2.7
1	A	90	GLU	2.7
1	B	37	ALA	2.6
1	B	119	THR	2.3
1	A	125	LEU	2.3
1	B	403	ASP	2.3
1	A	130	ARG	2.2
1	B	66	ASN	2.2
1	B	130	ARG	2.2

### 6.2 Non-standard residues in protein, DNA, RNA chains [i](#)

There are no non-standard protein/DNA/RNA residues in this entry.

## 6.3 Carbohydrates [i](#)

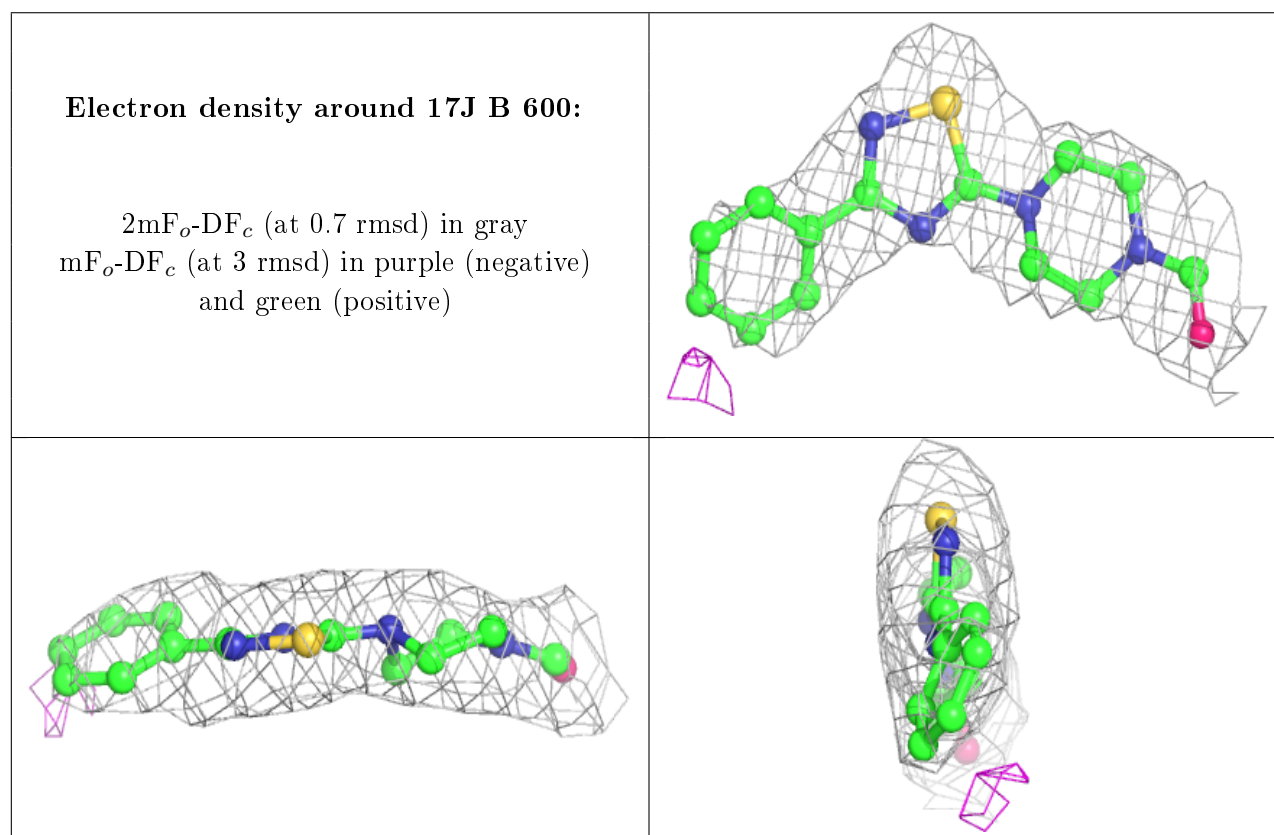
There are no carbohydrates in this entry.

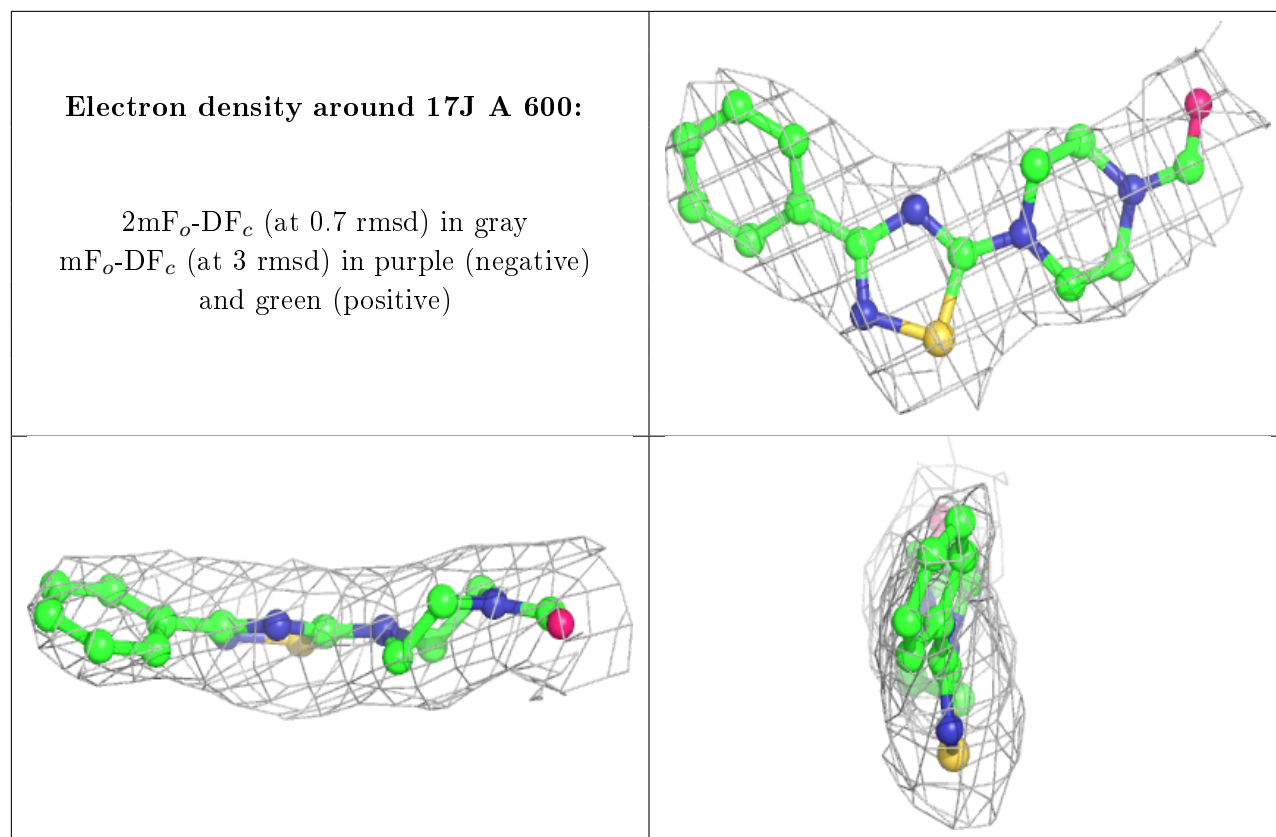
## 6.4 Ligands [i](#)

In the following table, the Atoms column lists the number of modelled atoms in the group and the number defined in the chemical component dictionary. The B-factors column lists the minimum, median, 95<sup>th</sup> percentile and maximum values of B factors of atoms in the group. The column labelled 'Q<0.9' lists the number of atoms with occupancy less than 0.9.

Mol	Type	Chain	Res	Atoms	RSCC	RSR	B-factors(Å <sup>2</sup> )	Q<0.9
2	17J	B	600	19/26	0.93	0.18	37,41,42,42	0
2	17J	A	600	19/26	0.94	0.16	36,38,39,39	0

The following is a graphical depiction of the model fit to experimental electron density of all instances of the Ligand of Interest. In addition, ligands with molecular weight > 250 and outliers as shown on the geometry validation Tables will also be included. Each fit is shown from different orientation to approximate a three-dimensional view.





## 6.5 Other polymers [i](#)

There are no such residues in this entry.