



# Full wwPDB X-ray Structure Validation Report ⓘ

Oct 11, 2021 – 02:16 PM EDT

PDB ID : 2HDB  
Title : HMG-CoA synthase from *Enterococcus faecalis*. Mutation alanine 110 to glycine  
Authors : Steussy, C.N.; Sutherlin, A.; Stauffacher, C.V.  
Deposited on : 2006-06-20  
Resolution : 2.20 Å(reported)

This is a Full wwPDB X-ray Structure Validation Report for a publicly released PDB entry.

We welcome your comments at [validation@mail.wwpdb.org](mailto:validation@mail.wwpdb.org)

A user guide is available at

<https://www.wwpdb.org/validation/2017/XrayValidationReportHelp>

with specific help available everywhere you see the ⓘ symbol.

---

The following versions of software and data (see [references ⓘ](#)) were used in the production of this report:

MolProbity : 4.02b-467  
Mogul : 1.8.5 (274361), CSD as541be (2020)  
Xtriage (Phenix) : 1.13  
EDS : 2.23.2  
Percentile statistics : 20191225.v01 (using entries in the PDB archive December 25th 2019)  
Refmac : 5.8.0158  
CCP4 : 7.0.044 (Gargrove)  
Ideal geometry (proteins) : Engh & Huber (2001)  
Ideal geometry (DNA, RNA) : Parkinson et al. (1996)  
Validation Pipeline (wwPDB-VP) : 2.23.2

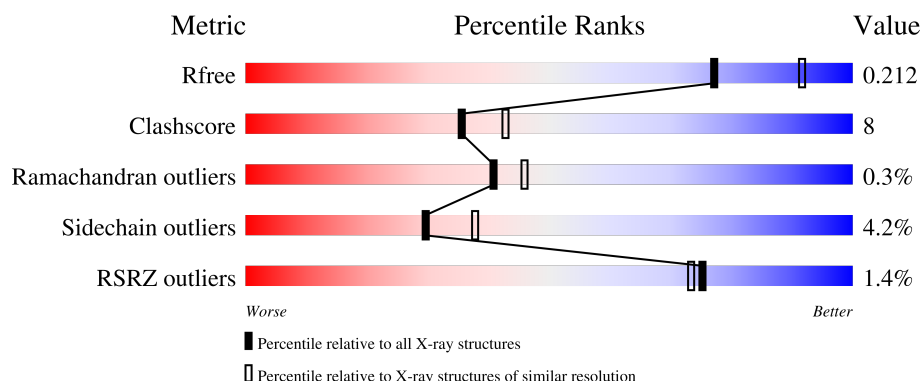
# 1 Overall quality at a glance

The following experimental techniques were used to determine the structure:

*X-RAY DIFFRACTION*

The reported resolution of this entry is 2.20 Å.

Percentile scores (ranging between 0-100) for global validation metrics of the entry are shown in the following graphic. The table shows the number of entries on which the scores are based.



Metric	Whole archive (#Entries)	Similar resolution (#Entries, resolution range(Å))
$R_{free}$	130704	4898 (2.20-2.20)
Clashscore	141614	5594 (2.20-2.20)
Ramachandran outliers	138981	5503 (2.20-2.20)
Sidechain outliers	138945	5504 (2.20-2.20)
RSRZ outliers	127900	4800 (2.20-2.20)

The table below summarises the geometric issues observed across the polymeric chains and their fit to the electron density. The red, orange, yellow and green segments of the lower bar indicate the fraction of residues that contain outliers for  $\geq 3$ , 2, 1 and 0 types of geometric quality criteria respectively. A grey segment represents the fraction of residues that are not modelled. The numeric value for each fraction is indicated below the corresponding segment, with a dot representing fractions  $\leq 5\%$ . The upper red bar (where present) indicates the fraction of residues that have poor fit to the electron density. The numeric value is given above the bar.

Mol	Chain	Length	Quality of chain
1	A	383	<div> <div>2%</div> <div>84%</div> <div>15%</div> <div>.</div> </div>
1	B	383	<div> <div>%</div> <div>80%</div> <div>18%</div> <div>.</div> </div>

The following table lists non-polymeric compounds, carbohydrate monomers and non-standard residues in protein, DNA, RNA chains that are outliers for geometric or electron-density-fit criteria:

Mol	Type	Chain	Res	Chirality	Geometry	Clashes	Electron density
2	SO4	B	402	-	-	X	-

## 2 Entry composition [i](#)

There are 4 unique types of molecules in this entry. The entry contains 6305 atoms, of which 0 are hydrogens and 0 are deuteriums.

In the tables below, the ZeroOcc column contains the number of atoms modelled with zero occupancy, the AltConf column contains the number of residues with at least one atom in alternate conformation and the Trace column contains the number of residues modelled with at most 2 atoms.

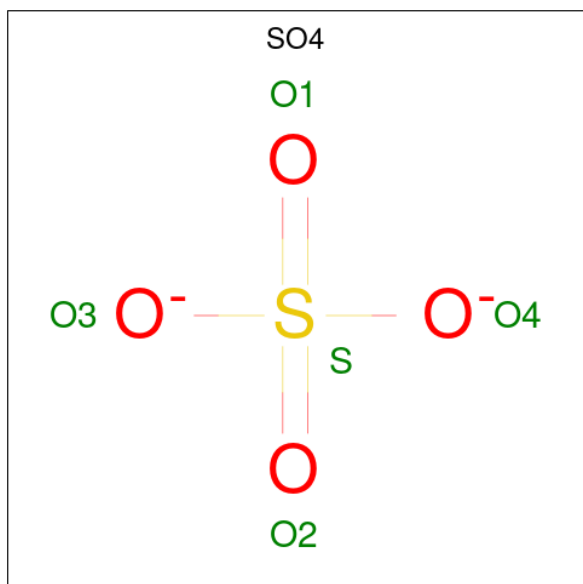
- Molecule 1 is a protein called HMG-CoA synthase.

Mol	Chain	Residues	Atoms					ZeroOcc	AltConf	Trace
1	A	383	Total	C	N	O	S	0	0	0
			2968	1885	491	581	11			
1	B	383	Total	C	N	O	S	0	0	0
			2968	1885	491	581	11			

There are 2 discrepancies between the modelled and reference sequences:

Chain	Residue	Modelled	Actual	Comment	Reference
A	110	GLY	ALA	engineered mutation	UNP Q9FD71
B	110	GLY	ALA	engineered mutation	UNP Q9FD71

- Molecule 2 is SULFATE ION (three-letter code: SO4) (formula: O<sub>4</sub>S).



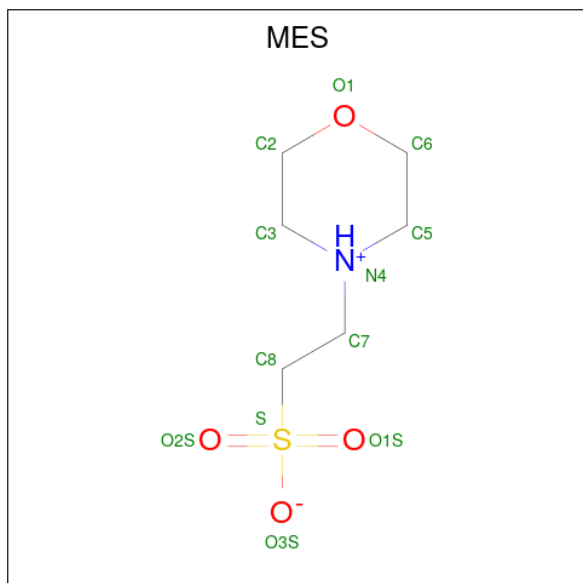
Mol	Chain	Residues	Atoms			ZeroOcc	AltConf
2	A	1	Total	O	S	0	0
			5	4	1		

*Continued on next page...*

Continued from previous page...

Mol	Chain	Residues	Atoms			ZeroOcc	AltConf
2	B	1	Total	O	S	0	0
			5	4	1		
2	B	1	Total	O	S	0	0
			5	4	1		

- Molecule 3 is 2-(N-MORPHOLINO)-ETHANESULFONIC ACID (three-letter code: MES) (formula:  $C_6H_{13}NO_4S$ ).



Mol	Chain	Residues	Atoms					ZeroOcc	AltConf
3	A	1	Total	C	N	O	S	0	0
			12	6	1	4	1		
3	B	1	Total	C	N	O	S	0	0
			12	6	1	4	1		

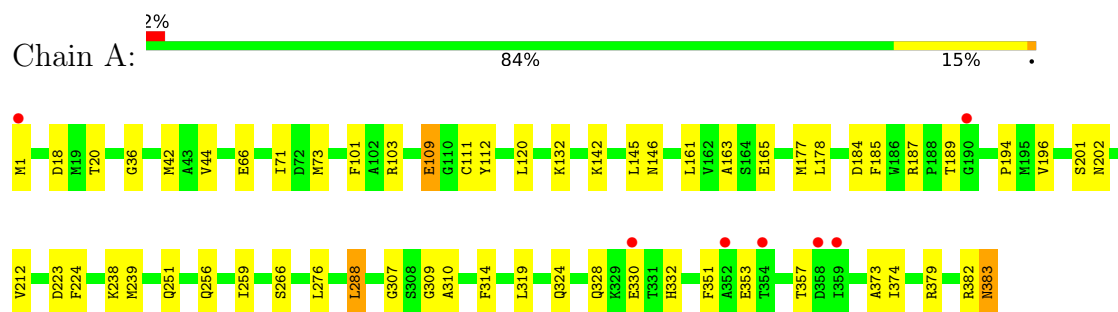
- Molecule 4 is water.

Mol	Chain	Residues	Atoms		ZeroOcc	AltConf
4	A	166	Total	O	0	0
			166	166		
4	B	164	Total	O	0	0
			164	164		

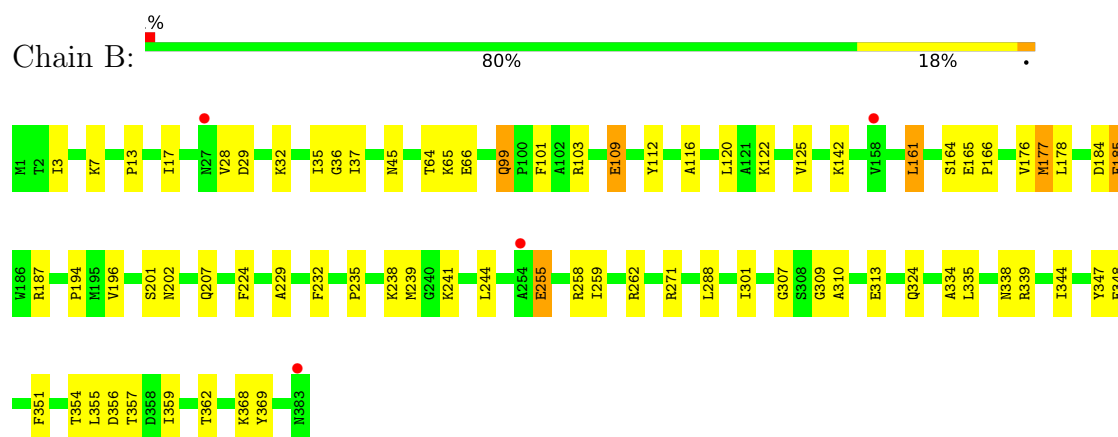
### 3 Residue-property plots [i](#)

These plots are drawn for all protein, RNA, DNA and oligosaccharide chains in the entry. The first graphic for a chain summarises the proportions of the various outlier classes displayed in the second graphic. The second graphic shows the sequence view annotated by issues in geometry and electron density. Residues are color-coded according to the number of geometric quality criteria for which they contain at least one outlier: green = 0, yellow = 1, orange = 2 and red = 3 or more. A red dot above a residue indicates a poor fit to the electron density ( $RSRZ > 2$ ). Stretches of 2 or more consecutive residues without any outlier are shown as a green connector. Residues present in the sample, but not in the model, are shown in grey.

- Molecule 1: HMG-CoA synthase



- Molecule 1: HMG-CoA synthase



## 4 Data and refinement statistics

Property	Value	Source
Space group	I 2 2 2	Depositor
Cell constants a, b, c, $\alpha$ , $\beta$ , $\gamma$	105.31Å 109.69Å 141.85Å 90.00° 90.00° 90.00°	Depositor
Resolution (Å)	25.92 – 2.20 30.24 – 2.20	Depositor EDS
% Data completeness (in resolution range)	99.8 (25.92-2.20) 99.9 (30.24-2.20)	Depositor EDS
$R_{merge}$	(Not available)	Depositor
$R_{sym}$	0.07	Depositor
$\langle I/\sigma(I) \rangle$ <sup>1</sup>	4.20 (at 2.20Å)	Xtriage
Refinement program	CNS 1.1, REFMAC 5.2.0005	Depositor
R, $R_{free}$	0.192 , 0.221 0.183 , 0.212	Depositor DCC
$R_{free}$ test set	2111 reflections (5.05%)	wwPDB-VP
Wilson B-factor (Å <sup>2</sup> )	25.1	Xtriage
Anisotropy	0.428	Xtriage
Bulk solvent $k_{sol}$ (e/Å <sup>3</sup> ), $B_{sol}$ (Å <sup>2</sup> )	0.35 , 37.2	EDS
L-test for twinning <sup>2</sup>	$\langle  L  \rangle = 0.49$ , $\langle L^2 \rangle = 0.32$	Xtriage
Estimated twinning fraction	0.012 for -k,-h,-l	Xtriage
$F_o, F_c$ correlation	0.95	EDS
Total number of atoms	6305	wwPDB-VP
Average B, all atoms (Å <sup>2</sup> )	26.0	wwPDB-VP

Xtriage's analysis on translational NCS is as follows: *The largest off-origin peak in the Patterson function is 3.69% of the height of the origin peak. No significant pseudotranslation is detected.*

<sup>1</sup>Intensities estimated from amplitudes.

<sup>2</sup>Theoretical values of  $\langle |L| \rangle$ ,  $\langle L^2 \rangle$  for acentric reflections are 0.5, 0.333 respectively for untwinned datasets, and 0.375, 0.2 for perfectly twinned datasets.

## 5 Model quality

### 5.1 Standard geometry

Bond lengths and bond angles in the following residue types are not validated in this section: MES, SO4

The Z score for a bond length (or angle) is the number of standard deviations the observed value is removed from the expected value. A bond length (or angle) with  $|Z| > 5$  is considered an outlier worth inspection. RMSZ is the root-mean-square of all Z scores of the bond lengths (or angles).

Mol	Chain	Bond lengths		Bond angles	
		RMSZ	# Z  >5	RMSZ	# Z  >5
1	A	0.36	0/3025	0.65	0/4102
1	B	0.38	0/3025	0.65	0/4102
All	All	0.37	0/6050	0.65	0/8204

There are no bond length outliers.

There are no bond angle outliers.

There are no chirality outliers.

There are no planarity outliers.

### 5.2 Too-close contacts

In the following table, the Non-H and H(model) columns list the number of non-hydrogen atoms and hydrogen atoms in the chain respectively. The H(added) column lists the number of hydrogen atoms added and optimized by MolProbity. The Clashes column lists the number of clashes within the asymmetric unit, whereas Symm-Clashes lists symmetry-related clashes.

Mol	Chain	Non-H	H(model)	H(added)	Clashes	Symm-Clashes
1	A	2968	0	2927	42	0
1	B	2968	0	2927	60	0
2	A	5	0	0	0	0
2	B	10	0	0	2	0
3	A	12	0	13	1	0
3	B	12	0	13	2	0
4	A	166	0	0	5	0
4	B	164	0	0	6	0
All	All	6305	0	5880	96	0

The all-atom clashscore is defined as the number of clashes found per 1000 atoms (including hydrogen atoms). The all-atom clashscore for this structure is 8.



All (96) close contacts within the same asymmetric unit are listed below, sorted by their clash magnitude.

Atom-1	Atom-2	Interatomic distance (Å)	Clash overlap (Å)
1:B:35:ILE:O	1:B:238:LYS:HE3	1.53	1.08
1:A:120:LEU:HD13	1:B:120:LEU:HD13	1.45	0.96
1:B:255:GLU:HA	1:B:255:GLU:OE1	1.67	0.94
1:B:28:VAL:HG13	1:B:32:LYS:HD2	1.55	0.87
1:B:238:LYS:HE2	4:B:651:HOH:O	1.77	0.84
1:B:36:GLY:O	1:B:238:LYS:HG3	1.80	0.81
1:B:65:LYS:HD3	1:B:66:GLU:N	2.02	0.74
1:B:65:LYS:HD3	1:B:65:LYS:C	2.08	0.74
1:A:374:ILE:CD1	1:A:379:ARG:HG2	2.19	0.73
1:A:212:VAL:CG1	1:A:314:PHE:HB2	2.18	0.72
1:A:196:VAL:HG11	3:A:501:MES:H22	1.74	0.70
1:A:36:GLY:O	1:A:238:LYS:HD3	1.92	0.68
1:B:65:LYS:N	2:B:402:SO4:O4	2.25	0.65
1:A:142:LYS:HD2	1:A:351:PHE:CE2	2.32	0.64
1:B:196:VAL:HG11	3:B:502:MES:H22	1.80	0.63
1:B:229:ALA:HB3	1:B:301:ILE:CD1	2.28	0.63
1:B:29:ASP:H	1:B:32:LYS:NZ	1.96	0.63
1:B:29:ASP:H	1:B:32:LYS:HZ2	1.45	0.63
1:B:229:ALA:HB3	1:B:301:ILE:HD12	1.79	0.63
1:A:1:MET:HG3	1:A:165:GLU:OE2	2.01	0.60
1:B:238:LYS:CE	4:B:651:HOH:O	2.40	0.60
1:B:324:GLN:HB2	4:B:636:HOH:O	2.03	0.59
1:B:28:VAL:CG1	1:B:32:LYS:HD2	2.32	0.59
1:A:324:GLN:HG3	4:A:632:HOH:O	2.02	0.58
1:B:187:ARG:HG3	1:B:194:PRO:HA	1.86	0.58
1:B:202:ASN:ND2	1:B:239:MET:HE3	2.19	0.58
1:A:42:MET:HE3	1:A:44:VAL:HG22	1.87	0.57
1:B:241:LYS:HD2	4:B:649:HOH:O	2.05	0.55
1:A:374:ILE:HD11	1:A:379:ARG:HG2	1.88	0.55
1:B:116:ALA:O	1:B:120:LEU:HG	2.08	0.54
1:B:224:PHE:HB3	1:B:259:ILE:HD11	1.88	0.54
1:A:374:ILE:HD12	1:A:379:ARG:HG2	1.90	0.54
1:B:335:LEU:O	1:B:339:ARG:HG3	2.08	0.54
1:A:120:LEU:CD1	1:B:120:LEU:HD13	2.30	0.53
1:A:187:ARG:HG3	1:A:194:PRO:HA	1.91	0.52
1:A:103:ARG:HB2	1:B:177:MET:HE2	1.90	0.52
1:A:374:ILE:HD13	1:A:379:ARG:HA	1.90	0.52
1:A:184:ASP:HB2	1:A:201:SER:HA	1.92	0.52
1:A:112:TYR:HB2	1:A:307:GLY:HA3	1.91	0.52
1:A:132:LYS:HG2	1:A:163:ALA:HB2	1.91	0.52

*Continued on next page...*

*Continued from previous page...*

Atom-1	Atom-2	Interatomic distance (Å)	Clash overlap (Å)
1:A:224:PHE:HB3	1:A:259:ILE:HD11	1.91	0.52
1:B:239:MET:HA	1:B:239:MET:HE2	1.91	0.51
1:A:328:GLN:HB2	1:A:332:HIS:CE1	2.46	0.50
1:B:112:TYR:HB2	1:B:307:GLY:HA3	1.94	0.50
1:A:42:MET:CE	1:A:44:VAL:HG22	2.43	0.49
1:A:103:ARG:CZ	1:B:177:MET:HE2	2.44	0.48
1:B:3:ILE:HD12	1:B:122:LYS:HG2	1.95	0.48
1:B:13:PRO:HG3	1:B:45:ASN:HB3	1.94	0.48
1:B:232:PHE:HZ	1:B:244:LEU:HD13	1.79	0.48
1:A:266:SER:HB3	1:A:288:LEU:HD13	1.96	0.47
1:B:239:MET:HA	1:B:239:MET:CE	2.44	0.47
1:B:255:GLU:OE2	1:B:258:ARG:NH2	2.43	0.47
1:B:37:ILE:C	1:B:238:LYS:HG2	2.34	0.47
1:B:202:ASN:ND2	1:B:239:MET:CE	2.77	0.47
1:A:18:ASP:OD2	1:A:20:THR:HB	2.15	0.47
1:B:185:PHE:C	1:B:185:PHE:CD2	2.88	0.47
1:A:373:ALA:O	1:A:374:ILE:HD13	2.15	0.46
1:B:235:PRO:HB3	3:B:502:MES:H81	1.97	0.46
1:B:271:ARG:NE	4:B:661:HOH:O	2.37	0.46
1:B:356:ASP:HB3	1:B:359:ILE:HD12	1.97	0.46
1:B:7:LYS:HE3	1:B:161:LEU:HD12	1.96	0.46
1:B:99:GLN:HE22	1:B:101:PHE:HB2	1.81	0.46
1:B:239:MET:HE2	1:B:239:MET:CA	2.46	0.46
1:A:330:GLU:HG3	4:A:611:HOH:O	2.17	0.45
1:B:176:VAL:O	1:B:313:GLU:HA	2.17	0.45
1:A:202:ASN:ND2	1:A:239:MET:CE	2.79	0.45
1:A:383:ASN:CG	1:A:383:ASN:O	2.54	0.45
1:B:64:THR:HB	2:B:402:SO4:O4	2.17	0.45
1:A:66:GLU:OE1	1:A:66:GLU:N	2.28	0.45
1:A:189:THR:O	4:A:667:HOH:O	2.21	0.45
1:B:99:GLN:HE21	1:B:99:GLN:HB2	1.58	0.45
1:B:125:VAL:HG11	1:B:164:SER:N	2.33	0.44
1:A:73:MET:HA	1:A:103:ARG:O	2.18	0.44
1:A:251:GLN:O	1:A:256:GLN:NE2	2.45	0.44
1:A:145:LEU:O	1:A:146:ASN:HB2	2.18	0.43
1:A:223:ASP:HB3	4:A:608:HOH:O	2.18	0.43
1:A:202:ASN:HD22	1:A:239:MET:CE	2.32	0.43
1:A:309:GLY:N	1:A:310:ALA:HA	2.33	0.43
1:B:65:LYS:C	1:B:65:LYS:CD	2.81	0.43
1:B:17:ILE:HG21	1:B:347:TYR:HB2	2.01	0.43
1:B:232:PHE:CZ	1:B:244:LEU:HD13	2.54	0.43

*Continued on next page...*

Continued from previous page...

Atom-1	Atom-2	Interatomic distance (Å)	Clash overlap (Å)
1:B:334:ALA:O	1:B:338:ASN:HB2	2.18	0.42
1:B:309:GLY:N	1:B:310:ALA:HA	2.34	0.42
1:B:344:ILE:O	1:B:348:GLU:HG3	2.19	0.42
1:A:101:PHE:HA	1:B:177:MET:O	2.20	0.42
1:B:142:LYS:HD3	1:B:351:PHE:CE2	2.55	0.42
1:B:184:ASP:HB2	1:B:201:SER:HA	2.02	0.42
1:A:142:LYS:HD3	4:A:654:HOH:O	2.20	0.41
1:A:71:ILE:HA	1:A:132:LYS:O	2.21	0.41
1:A:212:VAL:HG12	1:A:314:PHE:HB2	2.00	0.41
1:B:354:THR:HG22	1:B:355:LEU:N	2.35	0.41
1:B:368:LYS:HE2	1:B:369:TYR:CZ	2.56	0.41
1:A:103:ARG:CZ	1:B:177:MET:CE	3.00	0.40
1:A:239:MET:HB2	1:A:239:MET:HE2	1.86	0.40
1:B:239:MET:HE3	4:B:631:HOH:O	2.21	0.40
1:B:165:GLU:N	1:B:166:PRO:CD	2.84	0.40

There are no symmetry-related clashes.

## 5.3 Torsion angles

### 5.3.1 Protein backbone

In the following table, the Percentiles column shows the percent Ramachandran outliers of the chain as a percentile score with respect to all X-ray entries followed by that with respect to entries of similar resolution.

The Analysed column shows the number of residues for which the backbone conformation was analysed, and the total number of residues.

Mol	Chain	Analysed	Favoured	Allowed	Outliers	Percentiles	
1	A	381/383 (100%)	369 (97%)	11 (3%)	1 (0%)	41	46
1	B	381/383 (100%)	375 (98%)	5 (1%)	1 (0%)	41	46
All	All	762/766 (100%)	744 (98%)	16 (2%)	2 (0%)	41	46

All (2) Ramachandran outliers are listed below:

Mol	Chain	Res	Type
1	A	109	GLU
1	B	109	GLU

### 5.3.2 Protein sidechains ⓘ

In the following table, the Percentiles column shows the percent sidechain outliers of the chain as a percentile score with respect to all X-ray entries followed by that with respect to entries of similar resolution.

The Analysed column shows the number of residues for which the sidechain conformation was analysed, and the total number of residues.

Mol	Chain	Analysed	Rotameric	Outliers	Percentiles	
1	A	312/312 (100%)	299 (96%)	13 (4%)	30	38
1	B	312/312 (100%)	299 (96%)	13 (4%)	30	38
All	All	624/624 (100%)	598 (96%)	26 (4%)	30	38

All (26) residues with a non-rotameric sidechain are listed below:

Mol	Chain	Res	Type
1	A	109	GLU
1	A	111	CYS
1	A	161	LEU
1	A	177	MET
1	A	178	LEU
1	A	185	PHE
1	A	276	LEU
1	A	288	LEU
1	A	319	LEU
1	A	353	GLU
1	A	357	THR
1	A	382	ARG
1	A	383	ASN
1	B	99	GLN
1	B	103	ARG
1	B	109	GLU
1	B	161	LEU
1	B	177	MET
1	B	178	LEU
1	B	185	PHE
1	B	207	GLN
1	B	255	GLU
1	B	262	ARG
1	B	288	LEU
1	B	357	THR
1	B	362	THR

Sometimes sidechains can be flipped to improve hydrogen bonding and reduce clashes. All (15) such sidechains are listed below:

Mol	Chain	Res	Type
1	A	45	ASN
1	A	191	HIS
1	A	202	ASN
1	A	211	GLN
1	A	324	GLN
1	A	325	ASN
1	A	326	HIS
1	A	328	GLN
1	A	338	ASN
1	A	375	ASN
1	A	376	ASN
1	B	99	GLN
1	B	202	ASN
1	B	338	ASN
1	B	376	ASN

### 5.3.3 RNA [i](#)

There are no RNA molecules in this entry.

## 5.4 Non-standard residues in protein, DNA, RNA chains [i](#)

There are no non-standard protein/DNA/RNA residues in this entry.

## 5.5 Carbohydrates [i](#)

There are no monosaccharides in this entry.

## 5.6 Ligand geometry [i](#)

5 ligands are modelled in this entry.

In the following table, the Counts columns list the number of bonds (or angles) for which Mogul statistics could be retrieved, the number of bonds (or angles) that are observed in the model and the number of bonds (or angles) that are defined in the Chemical Component Dictionary. The Link column lists molecule types, if any, to which the group is linked. The Z score for a bond length (or angle) is the number of standard deviations the observed value is removed from the expected value. A bond length (or angle) with  $|Z| > 2$  is considered an outlier worth inspection. RMSZ is the root-mean-square of all Z scores of the bond lengths (or angles).

Mol	Type	Chain	Res	Link	Bond lengths			Bond angles		
					Counts	RMSZ	# Z  > 2	Counts	RMSZ	# Z  > 2
2	SO4	B	403	-	4,4,4	0.14	0	6,6,6	0.05	0
2	SO4	B	402	-	4,4,4	0.28	0	6,6,6	0.16	0
3	MES	A	501	-	12,12,12	1.53	1 (8%)	14,16,16	1.32	3 (21%)
2	SO4	A	401	-	4,4,4	0.23	0	6,6,6	0.06	0
3	MES	B	502	-	12,12,12	1.51	1 (8%)	14,16,16	1.26	2 (14%)

In the following table, the Chirals column lists the number of chiral outliers, the number of chiral centers analysed, the number of these observed in the model and the number defined in the Chemical Component Dictionary. Similar counts are reported in the Torsion and Rings columns. '-' means no outliers of that kind were identified.

Mol	Type	Chain	Res	Link	Chirals	Torsions	Rings
3	MES	A	501	-	-	1/6/14/14	0/1/1/1
3	MES	B	502	-	-	3/6/14/14	0/1/1/1

All (2) bond length outliers are listed below:

Mol	Chain	Res	Type	Atoms	Z	Observed(Å)	Ideal(Å)
3	B	502	MES	C8-S	4.27	1.83	1.77
3	A	501	MES	C8-S	4.22	1.83	1.77

All (5) bond angle outliers are listed below:

Mol	Chain	Res	Type	Atoms	Z	Observed(°)	Ideal(°)
3	B	502	MES	O3S-S-C8	2.81	110.31	105.77
3	A	501	MES	O3S-S-C8	2.58	109.94	105.77
3	B	502	MES	O1S-S-C8	2.29	109.68	106.92
3	A	501	MES	O1S-S-C8	2.05	109.38	106.92
3	A	501	MES	O2S-S-C8	2.01	109.33	106.92

There are no chirality outliers.

All (4) torsion outliers are listed below:

Mol	Chain	Res	Type	Atoms
3	A	501	MES	C8-C7-N4-C3
3	B	502	MES	C7-C8-S-O3S
3	B	502	MES	C8-C7-N4-C3
3	B	502	MES	C7-C8-S-O1S

There are no ring outliers.

3 monomers are involved in 5 short contacts:

Mol	Chain	Res	Type	Clashes	Symm-Clashes
2	B	402	SO4	2	0
3	A	501	MES	1	0
3	B	502	MES	2	0

## 5.7 Other polymers [i](#)

There are no such residues in this entry.

## 5.8 Polymer linkage issues [i](#)

There are no chain breaks in this entry.

## 6 Fit of model and data [i](#)

### 6.1 Protein, DNA and RNA chains [i](#)

In the following table, the column labelled ‘#RSRZ > 2’ contains the number (and percentage) of RSRZ outliers, followed by percent RSRZ outliers for the chain as percentile scores relative to all X-ray entries and entries of similar resolution. The OWAB column contains the minimum, median, 95<sup>th</sup> percentile and maximum values of the occupancy-weighted average B-factor per residue. The column labelled ‘Q < 0.9’ lists the number of (and percentage) of residues with an average occupancy less than 0.9.

Mol	Chain	Analysed	<RSRZ>	#RSRZ>2	OWAB(Å <sup>2</sup> )	Q<0.9
1	A	383/383 (100%)	-0.32	7 (1%) 68 66	15, 24, 37, 46	11 (2%)
1	B	383/383 (100%)	-0.32	4 (1%) 82 81	14, 25, 39, 51	12 (3%)
All	All	766/766 (100%)	-0.32	11 (1%) 75 73	14, 24, 38, 51	23 (3%)

All (11) RSRZ outliers are listed below:

Mol	Chain	Res	Type	RSRZ
1	B	383	ASN	4.4
1	A	352	ALA	3.7
1	A	354	THR	3.6
1	A	190	GLY	3.2
1	A	359	ILE	3.2
1	B	254	ALA	2.3
1	A	358	ASP	2.3
1	A	1	MET	2.1
1	B	27	ASN	2.1
1	A	330	GLU	2.0
1	B	158	VAL	2.0

### 6.2 Non-standard residues in protein, DNA, RNA chains [i](#)

There are no non-standard protein/DNA/RNA residues in this entry.

### 6.3 Carbohydrates [i](#)

There are no monosaccharides in this entry.



## 6.4 Ligands

In the following table, the Atoms column lists the number of modelled atoms in the group and the number defined in the chemical component dictionary. The B-factors column lists the minimum, median, 95<sup>th</sup> percentile and maximum values of B factors of atoms in the group. The column labelled 'Q< 0.9' lists the number of atoms with occupancy less than 0.9.

Mol	Type	Chain	Res	Atoms	RSCC	RSR	B-factors(Å <sup>2</sup> )	Q<0.9
2	SO4	B	402	5/5	0.82	0.26	45,45,45,45	5
2	SO4	A	401	5/5	0.92	0.24	60,60,61,62	0
3	MES	A	501	12/12	0.96	0.13	26,31,35,36	0
3	MES	B	502	12/12	0.97	0.12	24,32,34,34	0
2	SO4	B	403	5/5	0.98	0.19	30,30,30,30	5

## 6.5 Other polymers

There are no such residues in this entry.