



Full wwPDB X-ray Structure Validation Report ⓘ

May 30, 2020 – 01:42 am BST

PDB ID : 4HDO
Title : Crystal structure of the binary Complex of KRIT1 bound to the Rap1 GTPase
Authors : Gingras, A.R.
Deposited on : 2012-10-02
Resolution : 1.67 Å(reported)

This is a Full wwPDB X-ray Structure Validation Report for a publicly released PDB entry.

We welcome your comments at validation@mail.wwpdb.org

A user guide is available at

<https://www.wwpdb.org/validation/2017/XrayValidationReportHelp>

with specific help available everywhere you see the ⓘ symbol.

The following versions of software and data (see [references ⓘ](#)) were used in the production of this report:

MolProbity : 4.02b-467
Mogul : 1.8.5 (274361), CSD as541be (2020)
Xtriage (Phenix) : 1.13
EDS : 2.11
buster-report : 1.1.7 (2018)
Percentile statistics : 20191225.v01 (using entries in the PDB archive December 25th 2019)
Refmac : 5.8.0158
CCP4 : 7.0.044 (Gargrove)
Ideal geometry (proteins) : Engh & Huber (2001)
Ideal geometry (DNA, RNA) : Parkinson et al. (1996)
Validation Pipeline (wwPDB-VP) : 2.11

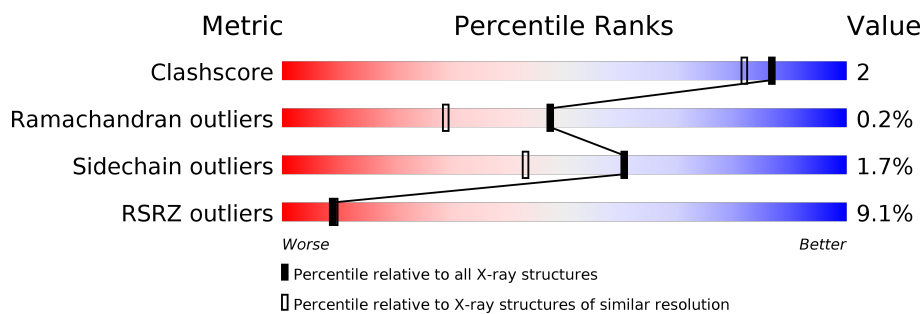
1 Overall quality at a glance

The following experimental techniques were used to determine the structure:

X-RAY DIFFRACTION

The reported resolution of this entry is 1.67 Å.

Percentile scores (ranging between 0-100) for global validation metrics of the entry are shown in the following graphic. The table shows the number of entries on which the scores are based.



Metric	Whole archive (#Entries)	Similar resolution (#Entries, resolution range(Å))
Clashscore	141614	7310 (1.70-1.66)
Ramachandran outliers	138981	7173 (1.70-1.66)
Sidechain outliers	138945	7172 (1.70-1.66)
RSRZ outliers	127900	6661 (1.70-1.66)

The table below summarises the geometric issues observed across the polymeric chains and their fit to the electron density. The red, orange, yellow and green segments on the lower bar indicate the fraction of residues that contain outliers for ≥ 3 , 2, 1 and 0 types of geometric quality criteria respectively. A grey segment represents the fraction of residues that are not modelled. The numeric value for each fraction is indicated below the corresponding segment, with a dot representing fractions $\leq 5\%$. The upper red bar (where present) indicates the fraction of residues that have poor fit to the electron density. The numeric value is given above the bar.

Mol	Chain	Length	Quality of chain
1	A	322	<div> <div>11%</div> <div> <div></div> <div>87%</div> <div>9%</div> <div>.</div> </div> </div>
2	B	167	<div> <div>4%</div> <div> <div></div> <div>94%</div> <div>.</div> <div>.</div> </div> </div>

2 Entry composition [i](#)

There are 6 unique types of molecules in this entry. The entry contains 4167 atoms, of which 0 are hydrogens and 0 are deuteriums.

In the tables below, the ZeroOcc column contains the number of atoms modelled with zero occupancy, the AltConf column contains the number of residues with at least one atom in alternate conformation and the Trace column contains the number of residues modelled with at most 2 atoms.

- Molecule 1 is a protein called Krev interaction trapped protein 1.

Mol	Chain	Residues	Atoms					ZeroOcc	AltConf	Trace
1	A	310	Total	C	N	O	S	0	3	0
			2557	1651	437	454	15			

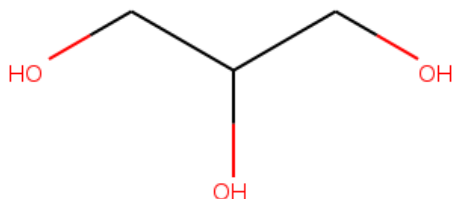
There are 2 discrepancies between the modelled and reference sequences:

Chain	Residue	Modelled	Actual	Comment	Reference
A	415	GLY	-	EXPRESSION TAG	UNP O00522
A	416	ALA	-	EXPRESSION TAG	UNP O00522

- Molecule 2 is a protein called Ras-related protein Rap-1b.

Mol	Chain	Residues	Atoms					ZeroOcc	AltConf	Trace
2	B	163	Total	C	N	O	S	0	2	0
			1303	815	224	257	7			

- Molecule 3 is GLYCEROL (three-letter code: GOL) (formula: C₃H₈O₃).

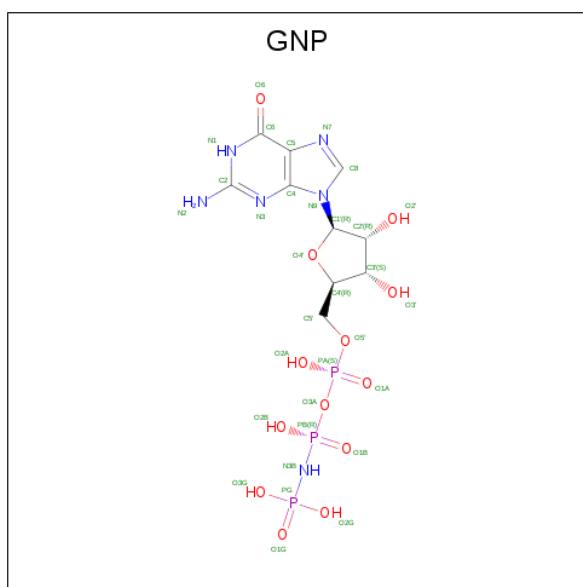


Mol	Chain	Residues	Atoms			ZeroOcc	AltConf
3	A	1	Total	C	O	0	0
			6	3	3		

- Molecule 4 is MAGNESIUM ION (three-letter code: MG) (formula: Mg).

Mol	Chain	Residues	Atoms		ZeroOcc	AltConf
4	B	1	Total	Mg	0	0
			1	1		

- Molecule 5 is PHOSPHOAMINOPHOSPHONIC ACID-GUANYLATE ESTER (three-letter code: GNP) (formula: $C_{10}H_{17}N_6O_{13}P_3$).



Mol	Chain	Residues	Atoms					ZeroOcc	AltConf
5	B	1	Total	C	N	O	P	0	0
			32	10	6	13	3		

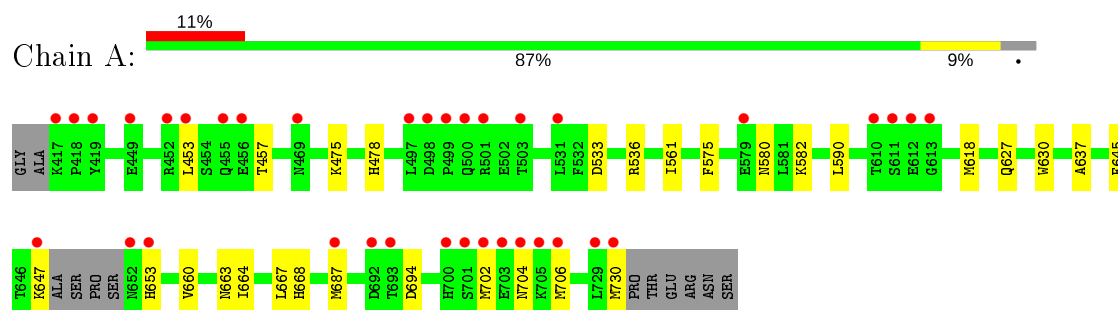
- Molecule 6 is water.

Mol	Chain	Residues	Atoms		ZeroOcc	AltConf
6	A	165	Total	O	0	0
			165	165		
6	B	103	Total	O	0	0
			103	103		

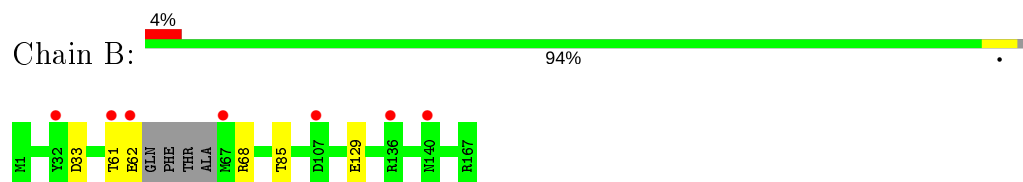
3 Residue-property plots [i](#)

These plots are drawn for all protein, RNA and DNA chains in the entry. The first graphic for a chain summarises the proportions of the various outlier classes displayed in the second graphic. The second graphic shows the sequence view annotated by issues in geometry and electron density. Residues are color-coded according to the number of geometric quality criteria for which they contain at least one outlier: green = 0, yellow = 1, orange = 2 and red = 3 or more. A red dot above a residue indicates a poor fit to the electron density ($RSRZ > 2$). Stretches of 2 or more consecutive residues without any outlier are shown as a green connector. Residues present in the sample, but not in the model, are shown in grey.

- Molecule 1: Krev interaction trapped protein 1



- Molecule 2: Ras-related protein Rap-1b



4 Data and refinement statistics

Property	Value	Source
Space group	P 1 21 1	Depositor
Cell constants a, b, c, α , β , γ	57.85Å 77.75Å 58.85Å 90.00° 91.20° 90.00°	Depositor
Resolution (Å)	32.43 – 1.67 32.43 – 1.67	Depositor EDS
% Data completeness (in resolution range)	96.0 (32.43-1.67) 96.0 (32.43-1.67)	Depositor EDS
R_{merge}	0.05	Depositor
R_{sym}	(Not available)	Depositor
$\langle I/\sigma(I) \rangle$ ¹	2.57 (at 1.67Å)	Xtriage
Refinement program	REFMAC 5.6.0117	Depositor
R, R_{free}	0.212 , 0.231 (Not available) , (Not available)	Depositor DCC
R_{free} test set	2896 reflections (5.00%)	wwPDB-VP
Wilson B-factor (Å ²)	20.6	Xtriage
Anisotropy	0.028	Xtriage
Bulk solvent k_{sol} (e/Å ³), B_{sol} (Å ²)	0.42 , 46.0	EDS
L-test for twinning ²	$\langle L \rangle = 0.49$, $\langle L^2 \rangle = 0.32$	Xtriage
Estimated twinning fraction	0.007 for l,k,-h 0.028 for h,-k,-l 0.019 for l,-k,h	Xtriage
F_o, F_c correlation	0.94	EDS
Total number of atoms	4167	wwPDB-VP
Average B, all atoms (Å ²)	23.0	wwPDB-VP

Xtriage's analysis on translational NCS is as follows: *The largest off-origin peak in the Patterson function is 6.12% of the height of the origin peak. No significant pseudotranslation is detected.*

¹Intensities estimated from amplitudes.

²Theoretical values of $\langle |L| \rangle$, $\langle L^2 \rangle$ for acentric reflections are 0.5, 0.333 respectively for untwinned datasets, and 0.375, 0.2 for perfectly twinned datasets.

5 Model quality

5.1 Standard geometry

Bond lengths and bond angles in the following residue types are not validated in this section: GOL, GNP, MG

The Z score for a bond length (or angle) is the number of standard deviations the observed value is removed from the expected value. A bond length (or angle) with $|Z| > 5$ is considered an outlier worth inspection. RMSZ is the root-mean-square of all Z scores of the bond lengths (or angles).

Mol	Chain	Bond lengths		Bond angles	
		RMSZ	# Z >5	RMSZ	# Z >5
1	A	0.44	0/2624	0.52	0/3544
2	B	0.32	0/1323	0.51	0/1782
All	All	0.41	0/3947	0.52	0/5326

There are no bond length outliers.

There are no bond angle outliers.

There are no chirality outliers.

There are no planarity outliers.

5.2 Too-close contacts

In the following table, the Non-H and H(model) columns list the number of non-hydrogen atoms and hydrogen atoms in the chain respectively. The H(added) column lists the number of hydrogen atoms added and optimized by MolProbity. The Clashes column lists the number of clashes within the asymmetric unit, whereas Symm-Clashes lists symmetry related clashes.

Mol	Chain	Non-H	H(model)	H(added)	Clashes	Symm-Clashes
1	A	2557	0	2604	13	0
2	B	1303	0	1291	3	0
3	A	6	0	8	0	0
4	B	1	0	0	0	0
5	B	32	0	13	0	0
6	A	165	0	0	0	0
6	B	103	0	0	2	0
All	All	4167	0	3916	16	0

The all-atom clashscore is defined as the number of clashes found per 1000 atoms (including hydrogen atoms). The all-atom clashscore for this structure is 2.

All (16) close contacts within the same asymmetric unit are listed below, sorted by their clash magnitude.

Atom-1	Atom-2	Interatomic distance (Å)	Clash overlap (Å)
1:A:582:LYS:HG3	1:A:590:LEU:HD11	1.87	0.56
2:B:61:THR:O	2:B:62:GLU:CB	2.55	0.54
1:A:687:MET:HG3	1:A:702:MET:HE3	1.90	0.52
1:A:533[B]:ASP:HA	1:A:536[B]:ARG:HG2	1.94	0.50
1:A:645:PHE:HB3	1:A:653:HIS:HB3	1.95	0.49
1:A:575:PHE:O	1:A:580:ASN:ND2	2.45	0.45
2:B:129:GLU:HB2	6:B:360:HOH:O	2.15	0.45
1:A:637:ALA:HA	1:A:663:ASN:HB3	2.00	0.44
1:A:663:ASN:OD1	1:A:668:HIS:HE1	2.02	0.43
1:A:561:ILE:HG23	1:A:618:MET:SD	2.59	0.43
1:A:475:LYS:H	1:A:478:HIS:CD2	2.37	0.42
1:A:627:GLN:HG2	1:A:630:TRP:CZ3	2.55	0.41
1:A:660:VAL:HG13	1:A:667:LEU:HD11	2.02	0.41
1:A:453:LEU:HD22	1:A:457:THR:HG21	2.03	0.41
2:B:68:ARG:NH1	6:B:304:HOH:O	2.53	0.40

There are no symmetry-related clashes.

5.3 Torsion angles ⓘ

5.3.1 Protein backbone ⓘ

In the following table, the Percentiles column shows the percent Ramachandran outliers of the chain as a percentile score with respect to all X-ray entries followed by that with respect to entries of similar resolution.

The Analysed column shows the number of residues for which the backbone conformation was analysed, and the total number of residues.

Mol	Chain	Analysed	Favoured	Allowed	Outliers	Percentiles	
1	A	309/322 (96%)	304 (98%)	4 (1%)	1 (0%)	41	23
2	B	161/167 (96%)	159 (99%)	2 (1%)	0	100	100
All	All	470/489 (96%)	463 (98%)	6 (1%)	1 (0%)	47	29

All (1) Ramachandran outliers are listed below:

Mol	Chain	Res	Type
1	A	704	ASN

5.3.2 Protein sidechains ⓘ

In the following table, the Percentiles column shows the percent sidechain outliers of the chain as a percentile score with respect to all X-ray entries followed by that with respect to entries of similar resolution.

The Analysed column shows the number of residues for which the sidechain conformation was analysed, and the total number of residues.

Mol	Chain	Analysed	Rotameric	Outliers	Percentiles	
1	A	285/293 (97%)	280 (98%)	5 (2%)	59	40
2	B	144/147 (98%)	141 (98%)	3 (2%)	53	33
All	All	429/440 (98%)	421 (98%)	8 (2%)	60	38

All (8) residues with a non-rotameric sidechain are listed below:

Mol	Chain	Res	Type
1	A	647	LYS
1	A	664	ILE
1	A	694	ASP
1	A	706	MET
1	A	730	MET
2	B	33[A]	ASP
2	B	33[B]	ASP
2	B	85	THR

Some sidechains can be flipped to improve hydrogen bonding and reduce clashes. All (8) such sidechains are listed below:

Mol	Chain	Res	Type
1	A	478	HIS
1	A	500	GLN
1	A	560	GLN
1	A	565	ASN
1	A	607	ASN
1	A	668	HIS
2	B	116	ASN
2	B	166	ASN

5.3.3 RNA ⓘ

There are no RNA molecules in this entry.

5.4 Non-standard residues in protein, DNA, RNA chains [i](#)

There are no non-standard protein/DNA/RNA residues in this entry.

5.5 Carbohydrates [i](#)

There are no carbohydrates in this entry.

5.6 Ligand geometry [i](#)

Of 3 ligands modelled in this entry, 1 is monoatomic - leaving 2 for Mogul analysis.

In the following table, the Counts columns list the number of bonds (or angles) for which Mogul statistics could be retrieved, the number of bonds (or angles) that are observed in the model and the number of bonds (or angles) that are defined in the Chemical Component Dictionary. The Link column lists molecule types, if any, to which the group is linked. The Z score for a bond length (or angle) is the number of standard deviations the observed value is removed from the expected value. A bond length (or angle) with $|Z| > 2$ is considered an outlier worth inspection. RMSZ is the root-mean-square of all Z scores of the bond lengths (or angles).

Mol	Type	Chain	Res	Link	Bond lengths			Bond angles		
					Counts	RMSZ	# Z > 2	Counts	RMSZ	# Z > 2
3	GOL	A	801	-	5,5,5	0.36	0	5,5,5	0.46	0
5	GNP	B	201	4	28,34,34	3.63	10 (35%)	30,54,54	1.15	3 (10%)

In the following table, the Chirals column lists the number of chiral outliers, the number of chiral centers analysed, the number of these observed in the model and the number defined in the Chemical Component Dictionary. Similar counts are reported in the Torsion and Rings columns. '-' means no outliers of that kind were identified.

Mol	Type	Chain	Res	Link	Chirals	Torsions	Rings
3	GOL	A	801	-	-	2/4/4/4	-
5	GNP	B	201	4	-	5/17/38/38	0/3/3/3

All (10) bond length outliers are listed below:

Mol	Chain	Res	Type	Atoms	Z	Observed(Å)	Ideal(Å)
5	B	201	GNP	C4-N9	-11.11	1.32	1.47
5	B	201	GNP	PB-O1B	9.15	1.60	1.46
5	B	201	GNP	PG-O1G	9.13	1.60	1.46
5	B	201	GNP	PB-N3B	3.81	1.73	1.63
5	B	201	GNP	PG-N3B	3.74	1.73	1.63
5	B	201	GNP	PG-O2G	-3.09	1.48	1.56

Continued on next page...

Continued from previous page...

Mol	Chain	Res	Type	Atoms	Z	Observed(Å)	Ideal(Å)
5	B	201	GNP	C8-N9	-2.99	1.35	1.45
5	B	201	GNP	PB-O2B	-2.92	1.48	1.56
5	B	201	GNP	C5-C6	-2.85	1.47	1.52
5	B	201	GNP	C2-N1	-2.20	1.35	1.44

All (3) bond angle outliers are listed below:

Mol	Chain	Res	Type	Atoms	Z	Observed(°)	Ideal(°)
5	B	201	GNP	C4-C5-N7	3.55	107.16	102.46
5	B	201	GNP	PA-O3A-PB	-2.39	124.21	132.62
5	B	201	GNP	O1G-PG-N3B	-2.30	108.39	111.77

There are no chirality outliers.

All (7) torsion outliers are listed below:

Mol	Chain	Res	Type	Atoms
3	A	801	GOL	C1-C2-C3-O3
5	B	201	GNP	PB-N3B-PG-O1G
5	B	201	GNP	PG-N3B-PB-O1B
5	B	201	GNP	PA-O3A-PB-O1B
5	B	201	GNP	PA-O3A-PB-O2B
5	B	201	GNP	C2'-C1'-N9-C4
3	A	801	GOL	O2-C2-C3-O3

There are no ring outliers.

No monomer is involved in short contacts.

5.7 Other polymers [i](#)

There are no such residues in this entry.

5.8 Polymer linkage issues [i](#)

There are no chain breaks in this entry.

6 Fit of model and data

6.1 Protein, DNA and RNA chains

In the following table, the column labelled ‘#RSRZ> 2’ contains the number (and percentage) of RSRZ outliers, followed by percent RSRZ outliers for the chain as percentile scores relative to all X-ray entries and entries of similar resolution. The OWAB column contains the minimum, median, 95th percentile and maximum values of the occupancy-weighted average B-factor per residue. The column labelled ‘Q< 0.9’ lists the number of (and percentage) of residues with an average occupancy less than 0.9.

Mol	Chain	Analysed	<RSRZ>	#RSRZ>2	OWAB(Å ²)	Q<0.9
1	A	310/322 (96%)	0.73	36 (11%) 4 5	11, 21, 44, 61	0
2	B	163/167 (97%)	0.34	7 (4%) 35 37	13, 22, 32, 36	0
All	All	473/489 (96%)	0.60	43 (9%) 9 9	11, 21, 39, 61	0

All (43) RSRZ outliers are listed below:

Mol	Chain	Res	Type	RSRZ
2	B	62	GLU	6.7
1	A	705	LYS	6.7
1	A	703	GLU	6.2
1	A	501	ARG	6.2
1	A	730	MET	6.2
1	A	419	TYR	5.8
1	A	704	ASN	5.6
1	A	498	ASP	4.7
1	A	692	ASP	4.6
1	A	647	LYS	4.4
1	A	612	GLU	4.4
1	A	652	ASN	4.3
2	B	32	TYR	4.1
1	A	455	GLN	4.1
2	B	67	MET	4.1
1	A	702	MET	3.9
1	A	497	LEU	3.6
1	A	729	LEU	3.6
1	A	452	ARG	3.5
1	A	706	MET	3.5
1	A	417	LYS	3.4
2	B	61	THR	3.4
1	A	611	SER	3.0
1	A	701	SER	2.7

Continued on next page...

Continued from previous page...

Mol	Chain	Res	Type	RSRZ
1	A	456	GLU	2.7
1	A	453	LEU	2.7
1	A	499	PRO	2.7
1	A	418	PRO	2.6
1	A	500	GLN	2.6
1	A	449	GLU	2.5
1	A	687	MET	2.4
1	A	653	HIS	2.4
1	A	700	HIS	2.4
1	A	613	GLY	2.3
1	A	579	GLU	2.3
2	B	140	ASN	2.2
2	B	107	ASP	2.2
1	A	503	THR	2.1
2	B	136	ARG	2.1
1	A	693	THR	2.1
1	A	531	LEU	2.0
1	A	610	THR	2.0
1	A	469	ASN	2.0

6.2 Non-standard residues in protein, DNA, RNA chains [i](#)

There are no non-standard protein/DNA/RNA residues in this entry.

6.3 Carbohydrates [i](#)

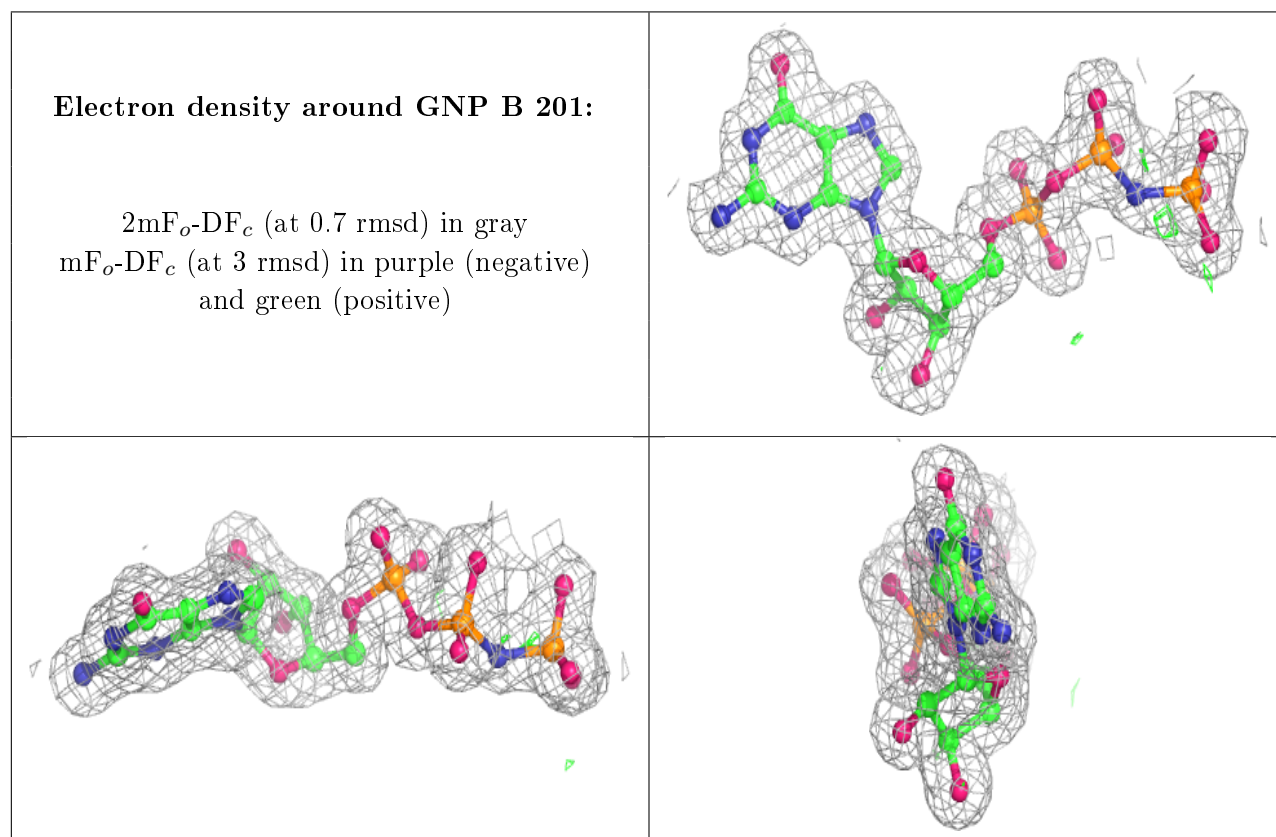
There are no carbohydrates in this entry.

6.4 Ligands [i](#)

In the following table, the Atoms column lists the number of modelled atoms in the group and the number defined in the chemical component dictionary. The B-factors column lists the minimum, median, 95th percentile and maximum values of B factors of atoms in the group. The column labelled 'Q<0.9' lists the number of atoms with occupancy less than 0.9.

Mol	Type	Chain	Res	Atoms	RSCC	RSR	B-factors(\AA^2)	Q<0.9
3	GOL	A	801	6/6	0.80	0.18	32,33,34,34	0
5	GNP	B	201	32/32	0.97	0.07	15,18,19,20	0
4	MG	B	200	1/1	0.99	0.03	13,13,13,13	0

The following is a graphical depiction of the model fit to experimental electron density of all instances of the Ligand of Interest. In addition, ligands with molecular weight > 250 and outliers as shown on the geometry validation Tables will also be included. Each fit is shown from different orientation to approximate a three-dimensional view.



6.5 Other polymers [i](#)

There are no such residues in this entry.