



Full wwPDB X-ray Structure Validation Report ⓘ

May 16, 2020 – 02:49 am BST

PDB ID : 6HD4
Title : ABL1 IN COMPLEX WITH COMPOUND 7 AND IMATINIB (STI-571)
Authors : Cowan-Jacob, S.W.
Deposited on : 2018-08-17
Resolution : 2.03 Å(reported)

This is a Full wwPDB X-ray Structure Validation Report for a publicly released PDB entry.

We welcome your comments at validation@mail.wwpdb.org

A user guide is available at

<https://www.wwpdb.org/validation/2017/XrayValidationReportHelp>

with specific help available everywhere you see the ⓘ symbol.

The following versions of software and data (see [references ⓘ](#)) were used in the production of this report:

MolProbity : 4.02b-467
Mogul : 1.8.5 (274361), CSD as541be (2020)
Xtriage (Phenix) : 1.13
EDS : 2.11
buster-report : 1.1.7 (2018)
Percentile statistics : 20191225.v01 (using entries in the PDB archive December 25th 2019)
Refmac : 5.8.0158
CCP4 : 7.0.044 (Gargrove)
Ideal geometry (proteins) : Engh & Huber (2001)
Ideal geometry (DNA, RNA) : Parkinson et al. (1996)
Validation Pipeline (wwPDB-VP) : 2.11

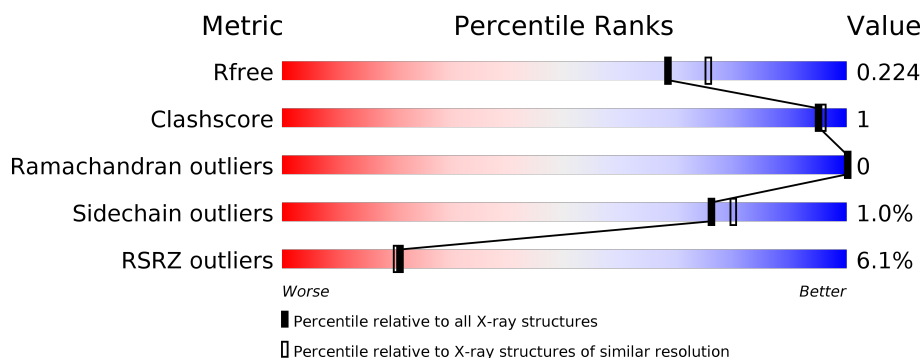
1 Overall quality at a glance

The following experimental techniques were used to determine the structure:

X-RAY DIFFRACTION

The reported resolution of this entry is 2.03 Å.

Percentile scores (ranging between 0-100) for global validation metrics of the entry are shown in the following graphic. The table shows the number of entries on which the scores are based.



Metric	Whole archive (#Entries)	Similar resolution (#Entries, resolution range(Å))
R_{free}	130704	10434 (2.04-2.00)
Clashscore	141614	11643 (2.04-2.00)
Ramachandran outliers	138981	11493 (2.04-2.00)
Sidechain outliers	138945	11492 (2.04-2.00)
RSRZ outliers	127900	10220 (2.04-2.00)

The table below summarises the geometric issues observed across the polymeric chains and their fit to the electron density. The red, orange, yellow and green segments on the lower bar indicate the fraction of residues that contain outliers for ≥ 3 , 2, 1 and 0 types of geometric quality criteria respectively. A grey segment represents the fraction of residues that are not modelled. The numeric value for each fraction is indicated below the corresponding segment, with a dot representing fractions $\leq 5\%$. The upper red bar (where present) indicates the fraction of residues that have poor fit to the electron density. The numeric value is given above the bar.

Mol	Chain	Length	Quality of chain
1	A	293	<div> <div>2%</div> <div> <div></div> <div>94%</div> <div></div> </div> <div></div> </div>
1	B	293	<div> <div>10%</div> <div> <div></div> <div>92%</div> <div></div> </div> <div></div> </div>

2 Entry composition

There are 6 unique types of molecules in this entry. The entry contains 5239 atoms, of which 0 are hydrogens and 0 are deuteriums.

In the tables below, the ZeroOcc column contains the number of atoms modelled with zero occupancy, the AltConf column contains the number of residues with at least one atom in alternate conformation and the Trace column contains the number of residues modelled with at most 2 atoms.

- Molecule 1 is a protein called Tyrosine-protein kinase ABL1.

Mol	Chain	Residues	Atoms					ZeroOcc	AltConf	Trace
1	A	287	Total	C	N	O	S	0	3	0
			2341	1504	377	441	19			
1	B	283	Total	C	N	O	S	0	1	0
			2305	1481	373	433	18			

There are 12 discrepancies between the modelled and reference sequences:

Chain	Residue	Modelled	Actual	Comment	Reference
A	242	GLY	-	expression tag	UNP P00520
A	243	ALA	-	expression tag	UNP P00520
A	244	MET	-	expression tag	UNP P00520
A	245	ASP	-	expression tag	UNP P00520
A	246	PRO	-	expression tag	UNP P00520
A	247	SER	-	expression tag	UNP P00520
B	242	GLY	-	expression tag	UNP P00520
B	243	ALA	-	expression tag	UNP P00520
B	244	MET	-	expression tag	UNP P00520
B	245	ASP	-	expression tag	UNP P00520
B	246	PRO	-	expression tag	UNP P00520
B	247	SER	-	expression tag	UNP P00520

- Molecule 2 is GLYCEROL (three-letter code: GOL) (formula: C₃H₈O₃).

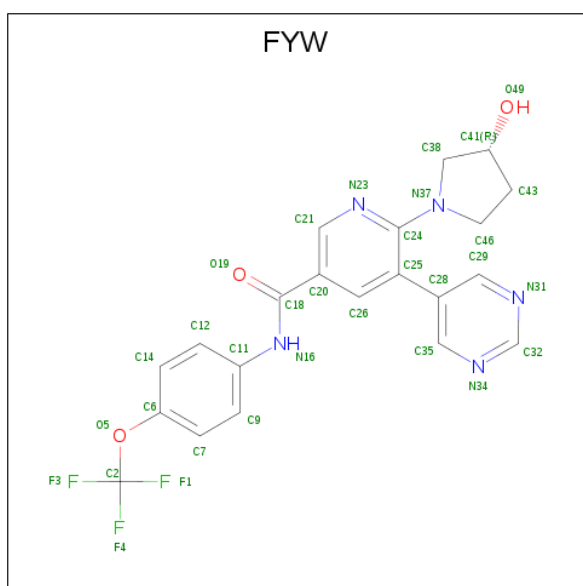


Mol	Chain	Residues	Atoms			ZeroOcc	AltConf
2	A	1	Total	C	O	0	0
			6	3	3		

- Molecule 3 is CHLORIDE ION (three-letter code: CL) (formula: Cl).

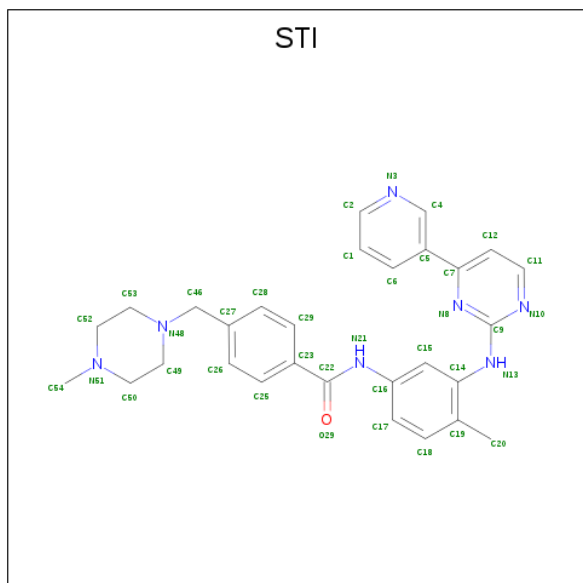
Mol	Chain	Residues	Atoms		ZeroOcc	AltConf
3	A	1	Total	Cl	0	0
			1	1		

- Molecule 4 is 6-[(3 {R})-3-oxidanylpyrrolidin-1-yl]-5-pyrimidin-5-yl- {N}-[4-(trifluoromethyl oxy)phenyl]pyridine-3-carboxamide (three-letter code: FYW) (formula: C₂₁H₁₈F₃N₅O₃).



Mol	Chain	Residues	Atoms					ZeroOcc	AltConf
4	A	1	Total	C	F	N	O	0	1
			64	42	6	10	6		
4	B	1	Total	C	F	N	O	0	1
			64	42	6	10	6		

- Molecule 5 is 4-(4-METHYL-PIPERAZIN-1-YLMETHYL)-N-[4-METHYL-3-(4-PYRIDIN-3-YL-PYRIMIDIN-2-YLAMINO)-PHENYL]-BENZAMIDE (three-letter code: STI) (formula: C₂₉H₃₁N₇O).



Mol	Chain	Residues	Atoms				ZeroOcc	AltConf
5	A	1	Total	C	N	O	0	0
			37	29	7	1		
5	B	1	Total	C	N	O	0	0
			37	29	7	1		

- Molecule 6 is water.

Mol	Chain	Residues	Atoms		ZeroOcc	AltConf
6	A	252	Total	O	0	0
			252	252		
6	B	132	Total	O	0	0
			132	132		

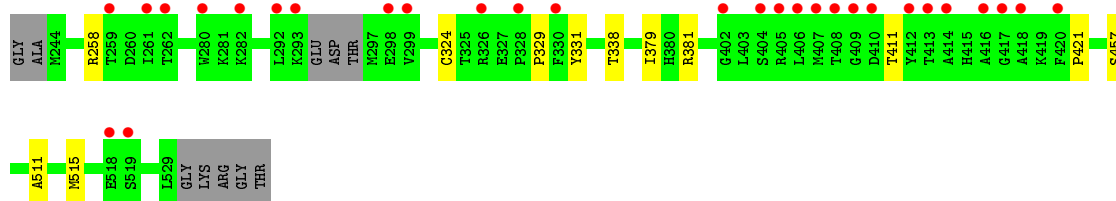
3 Residue-property plots [i](#)

These plots are drawn for all protein, RNA and DNA chains in the entry. The first graphic for a chain summarises the proportions of the various outlier classes displayed in the second graphic. The second graphic shows the sequence view annotated by issues in geometry and electron density. Residues are color-coded according to the number of geometric quality criteria for which they contain at least one outlier: green = 0, yellow = 1, orange = 2 and red = 3 or more. A red dot above a residue indicates a poor fit to the electron density ($RSRZ > 2$). Stretches of 2 or more consecutive residues without any outlier are shown as a green connector. Residues present in the sample, but not in the model, are shown in grey.

- Molecule 1: Tyrosine-protein kinase ABL1



- Molecule 1: Tyrosine-protein kinase ABL1



4 Data and refinement statistics

Property	Value	Source
Space group	P 1	Depositor
Cell constants a, b, c, α , β , γ	42.16 Å 65.03 Å 66.09 Å 73.00° 80.52° 84.88°	Depositor
Resolution (Å)	40.40 – 2.03 38.91 – 2.03	Depositor EDS
% Data completeness (in resolution range)	92.8 (40.40-2.03) 92.8 (38.91-2.03)	Depositor EDS
R_{merge}	0.03	Depositor
R_{sym}	(Not available)	Depositor
$\langle I/\sigma(I) \rangle$ ¹	3.31 (at 2.03 Å)	Xtriage
Refinement program	BUSTER 2.9.3	Depositor
R, R_{free}	0.181 , 0.223 0.179 , 0.224	Depositor DCC
R_{free} test set	1985 reflections (5.00%)	wwPDB-VP
Wilson B-factor (Å ²)	27.5	Xtriage
Anisotropy	0.224	Xtriage
Bulk solvent k_{sol} (e/Å ³), B_{sol} (Å ²)	0.35 , 60.3	EDS
L-test for twinning ²	$\langle L \rangle = 0.49$, $\langle L^2 \rangle = 0.33$	Xtriage
Estimated twinning fraction	No twinning to report.	Xtriage
F_o, F_c correlation	0.96	EDS
Total number of atoms	5239	wwPDB-VP
Average B, all atoms (Å ²)	36.0	wwPDB-VP

Xtriage's analysis on translational NCS is as follows: *The largest off-origin peak in the Patterson function is 7.71% of the height of the origin peak. No significant pseudotranslation is detected.*

¹Intensities estimated from amplitudes.

²Theoretical values of $\langle |L| \rangle$, $\langle L^2 \rangle$ for acentric reflections are 0.5, 0.333 respectively for untwinned datasets, and 0.375, 0.2 for perfectly twinned datasets.

5 Model quality

5.1 Standard geometry

Bond lengths and bond angles in the following residue types are not validated in this section: GOL, CL, FYW, STI

The Z score for a bond length (or angle) is the number of standard deviations the observed value is removed from the expected value. A bond length (or angle) with $|Z| > 5$ is considered an outlier worth inspection. RMSZ is the root-mean-square of all Z scores of the bond lengths (or angles).

Mol	Chain	Bond lengths		Bond angles	
		RMSZ	$\# Z > 5$	RMSZ	$\# Z > 5$
1	A	0.55	0/2405	0.66	0/3252
1	B	0.49	0/2363	0.65	0/3196
All	All	0.52	0/4768	0.66	0/6448

There are no bond length outliers.

There are no bond angle outliers.

There are no chirality outliers.

There are no planarity outliers.

5.2 Too-close contacts

In the following table, the Non-H and H(model) columns list the number of non-hydrogen atoms and hydrogen atoms in the chain respectively. The H(added) column lists the number of hydrogen atoms added and optimized by MolProbity. The Clashes column lists the number of clashes within the asymmetric unit, whereas Symm-Clashes lists symmetry related clashes.

Mol	Chain	Non-H	H(model)	H(added)	Clashes	Symm-Clashes
1	A	2341	0	2289	4	0
1	B	2305	0	2251	5	0
2	A	6	0	8	0	0
3	A	1	0	0	0	0
4	A	64	0	0	1	0
4	B	64	0	0	0	0
5	A	37	0	31	0	0
5	B	37	0	31	1	0
6	A	252	0	0	0	0
6	B	132	0	0	0	0
All	All	5239	0	4610	11	0

The all-atom clashscore is defined as the number of clashes found per 1000 atoms (including hydrogen atoms). The all-atom clashscore for this structure is 1.

All (11) close contacts within the same asymmetric unit are listed below, sorted by their clash magnitude.

Atom-1	Atom-2	Interatomic distance (Å)	Clash overlap (Å)
1:A:324:CYS:HB2	1:A:331:TYR:HB2	1.88	0.56
1:B:324:CYS:HB2	1:B:331:TYR:HB2	1.91	0.52
1:B:258:ARG:NH1	1:B:329:PRO:O	2.46	0.49
1:A:511:ALA:O	1:A:515:MET:HB2	2.13	0.48
1:B:511:ALA:O	1:B:515:MET:HB2	2.14	0.47
1:B:411:THR:O	1:B:421:PRO:HA	2.17	0.45
1:A:405:ARG:HD2	1:A:419:LYS:HG3	1.99	0.44
1:B:379:ILE:HG22	1:B:381:ARG:HG3	2.00	0.42
1:A:360:LEU:HB2	1:A:521:ILE:HD13	2.01	0.42
4:A:603[A]:FYW:C28	4:A:603[A]:FYW:C46	2.98	0.41
5:B:602:STI:H151	5:B:602:STI:O29	2.20	0.40

There are no symmetry-related clashes.

5.3 Torsion angles [i](#)

5.3.1 Protein backbone [i](#)

In the following table, the Percentiles column shows the percent Ramachandran outliers of the chain as a percentile score with respect to all X-ray entries followed by that with respect to entries of similar resolution.

The Analysed column shows the number of residues for which the backbone conformation was analysed, and the total number of residues.

Mol	Chain	Analysed	Favoured	Allowed	Outliers	Percentiles	
1	A	286/293 (98%)	279 (98%)	7 (2%)	0	100	100
1	B	280/293 (96%)	268 (96%)	12 (4%)	0	100	100
All	All	566/586 (97%)	547 (97%)	19 (3%)	0	100	100

There are no Ramachandran outliers to report.

5.3.2 Protein sidechains [i](#)

In the following table, the Percentiles column shows the percent sidechain outliers of the chain as a percentile score with respect to all X-ray entries followed by that with respect to entries of similar

resolution.

The Analysed column shows the number of residues for which the sidechain conformation was analysed, and the total number of residues.

Mol	Chain	Analysed	Rotameric	Outliers	Percentiles	
1	A	254/255 (100%)	251 (99%)	3 (1%)	71	75
1	B	250/255 (98%)	248 (99%)	2 (1%)	81	85
All	All	504/510 (99%)	499 (99%)	5 (1%)	76	80

All (5) residues with a non-rotameric sidechain are listed below:

Mol	Chain	Res	Type
1	A	247	SER
1	A	447	LEU
1	A	463	ASP
1	B	338	THR
1	B	457	SER

Some sidechains can be flipped to improve hydrogen bonding and reduce clashes. All (2) such sidechains are listed below:

Mol	Chain	Res	Type
1	B	250	ASN
1	B	394	HIS

5.3.3 RNA [i](#)

There are no RNA molecules in this entry.

5.4 Non-standard residues in protein, DNA, RNA chains [i](#)

There are no non-standard protein/DNA/RNA residues in this entry.

5.5 Carbohydrates [i](#)

There are no carbohydrates in this entry.

5.6 Ligand geometry [i](#)

Of 8 ligands modelled in this entry, 1 is monoatomic - leaving 7 for Mogul analysis.

In the following table, the Counts columns list the number of bonds (or angles) for which Mogul statistics could be retrieved, the number of bonds (or angles) that are observed in the model and the number of bonds (or angles) that are defined in the Chemical Component Dictionary. The Link column lists molecule types, if any, to which the group is linked. The Z score for a bond length (or angle) is the number of standard deviations the observed value is removed from the expected value. A bond length (or angle) with $|Z| > 2$ is considered an outlier worth inspection. RMSZ is the root-mean-square of all Z scores of the bond lengths (or angles).

Mol	Type	Chain	Res	Link	Bond lengths			Bond angles		
					Counts	RMSZ	$\# Z > 2$	Counts	RMSZ	$\# Z > 2$
4	FYW	A	603[B]	-	35,35,35	0.96	1 (2%)	48,50,50	1.52	10 (20%)
2	GOL	A	601	-	5,5,5	0.52	0	5,5,5	0.71	0
4	FYW	A	603[A]	-	35,35,35	0.96	1 (2%)	48,50,50	1.67	9 (18%)
4	FYW	B	601[B]	-	35,35,35	0.97	1 (2%)	48,50,50	1.48	10 (20%)
5	STI	A	604	-	41,41,41	0.99	0	56,56,56	1.98	10 (17%)
4	FYW	B	601[A]	-	35,35,35	0.95	1 (2%)	48,50,50	1.45	8 (16%)
5	STI	B	602	-	41,41,41	0.94	0	56,56,56	1.95	9 (16%)

In the following table, the Chirals column lists the number of chiral outliers, the number of chiral centers analysed, the number of these observed in the model and the number defined in the Chemical Component Dictionary. Similar counts are reported in the Torsion and Rings columns. '-' means no outliers of that kind were identified.

Mol	Type	Chain	Res	Link	Chirals	Torsions	Rings
4	FYW	A	603[B]	-	-	3/21/30/30	0/4/4/4
2	GOL	A	601	-	-	0/4/4/4	-
4	FYW	A	603[A]	-	-	0/21/30/30	0/4/4/4
4	FYW	B	601[B]	-	-	2/21/30/30	0/4/4/4
5	STI	A	604	-	-	1/20/30/30	0/5/5/5
4	FYW	B	601[A]	-	-	3/21/30/30	0/4/4/4
5	STI	B	602	-	-	1/20/30/30	0/5/5/5

All (4) bond length outliers are listed below:

Mol	Chain	Res	Type	Atoms	Z	Observed(Å)	Ideal(Å)
4	B	601[B]	FYW	O5-C2	2.25	1.44	1.31
4	B	601[A]	FYW	O5-C2	2.21	1.44	1.31
4	A	603[B]	FYW	O5-C2	2.16	1.43	1.31
4	A	603[A]	FYW	O5-C2	2.12	1.43	1.31

All (56) bond angle outliers are listed below:

Mol	Chain	Res	Type	Atoms	Z	Observed(°)	Ideal(°)
5	A	604	STI	N10-C9-N8	-7.23	119.70	126.55
5	B	602	STI	N10-C9-N8	-7.22	119.71	126.55
5	A	604	STI	C11-N10-C9	7.06	121.71	115.45
5	B	602	STI	C11-N10-C9	6.55	121.25	115.45
5	A	604	STI	C7-N8-C9	5.84	121.50	116.69
5	B	602	STI	C7-N8-C9	5.79	121.46	116.69
4	A	603[A]	FYW	C35-N34-C32	4.53	121.59	115.80
4	A	603[A]	FYW	C29-N31-C32	4.28	121.27	115.80
4	A	603[B]	FYW	C29-N31-C32	4.16	121.12	115.80
4	B	601[A]	FYW	C35-N34-C32	4.09	121.04	115.80
5	A	604	STI	C12-C11-N10	-4.03	118.96	123.96
4	B	601[B]	FYW	C35-N34-C32	4.02	120.95	115.80
4	A	603[B]	FYW	C35-N34-C32	4.00	120.91	115.80
4	A	603[A]	FYW	C20-C21-N23	-3.82	118.33	123.67
4	B	601[B]	FYW	C29-N31-C32	3.77	120.63	115.80
4	B	601[A]	FYW	C29-N31-C32	3.75	120.60	115.80
4	A	603[A]	FYW	N34-C32-N31	-3.51	119.73	126.61
5	B	602	STI	C12-C11-N10	-3.46	119.66	123.96
4	A	603[A]	FYW	C21-N23-C24	3.22	125.41	115.17
4	A	603[A]	FYW	C25-C24-N37	3.17	127.57	122.37
4	A	603[B]	FYW	N34-C32-N31	-3.14	120.47	126.61
4	B	601[A]	FYW	N34-C32-N31	-3.13	120.48	126.61
4	A	603[B]	FYW	C25-C24-N23	-3.10	118.09	122.31
4	B	601[B]	FYW	C25-C24-N23	-3.10	118.09	122.31
4	B	601[B]	FYW	N34-C32-N31	-3.09	120.57	126.61
4	A	603[A]	FYW	C46-C43-C41	-3.08	100.21	104.17
4	B	601[A]	FYW	C20-C21-N23	-2.90	119.63	123.67
4	B	601[B]	FYW	C21-N23-C24	2.83	124.17	115.17
4	A	603[A]	FYW	C25-C24-N23	-2.82	118.46	122.31
4	B	601[A]	FYW	C21-N23-C24	2.79	124.06	115.17
5	B	602	STI	C50-N51-C52	2.79	113.43	109.52
4	A	603[B]	FYW	C21-N23-C24	2.75	123.91	115.17
5	B	602	STI	C2-N3-C4	2.75	121.60	116.85
4	B	601[B]	FYW	O19-C18-C20	-2.66	116.19	120.94
4	B	601[A]	FYW	C25-C24-N23	-2.56	118.82	122.31
4	B	601[B]	FYW	C20-C21-N23	-2.50	120.19	123.67
4	A	603[B]	FYW	O19-C18-C20	-2.49	116.49	120.94
5	A	604	STI	C14-N13-C9	-2.46	122.18	129.60
4	A	603[B]	FYW	C20-C21-N23	-2.43	120.27	123.67
4	B	601[B]	FYW	C25-C24-N37	2.41	126.32	122.37
5	B	602	STI	C19-C14-N13	2.40	123.24	118.70
4	B	601[A]	FYW	O19-C18-C20	-2.36	116.74	120.94
5	B	602	STI	C14-N13-C9	-2.34	122.54	129.60

Continued on next page...

Continued from previous page...

Mol	Chain	Res	Type	Atoms	Z	Observed(°)	Ideal(°)
4	B	601[A]	FYW	C25-C24-N37	2.28	126.10	122.37
5	A	604	STI	C19-C14-N13	2.25	122.97	118.70
4	A	603[B]	FYW	C25-C24-N37	2.25	126.06	122.37
5	A	604	STI	C46-N48-C53	2.25	116.06	111.06
4	A	603[B]	FYW	C35-C28-C29	2.23	118.14	114.66
5	A	604	STI	C2-N3-C4	2.20	120.66	116.85
5	A	604	STI	O29-C22-C23	-2.20	117.02	120.94
4	A	603[B]	FYW	C26-C25-C24	2.18	118.83	116.32
4	A	603[A]	FYW	C43-C46-N37	-2.16	100.82	103.35
5	B	602	STI	O29-C22-C23	-2.16	117.09	120.94
5	A	604	STI	C49-N48-C53	2.03	113.39	108.83
4	B	601[B]	FYW	C26-C25-C24	2.01	118.64	116.32
4	B	601[B]	FYW	C35-C28-C29	2.01	117.79	114.66

There are no chirality outliers.

All (10) torsion outliers are listed below:

Mol	Chain	Res	Type	Atoms
4	A	603[B]	FYW	C25-C24-N37-C46
4	A	603[B]	FYW	N23-C24-N37-C46
4	B	601[B]	FYW	N23-C24-N37-C46
5	A	604	STI	C15-C14-N13-C9
4	B	601[A]	FYW	C25-C24-N37-C38
4	B	601[A]	FYW	N23-C24-N37-C38
4	B	601[A]	FYW	N23-C24-N37-C46
5	B	602	STI	C15-C14-N13-C9
4	B	601[B]	FYW	C25-C24-N37-C46
4	A	603[B]	FYW	N23-C24-N37-C38

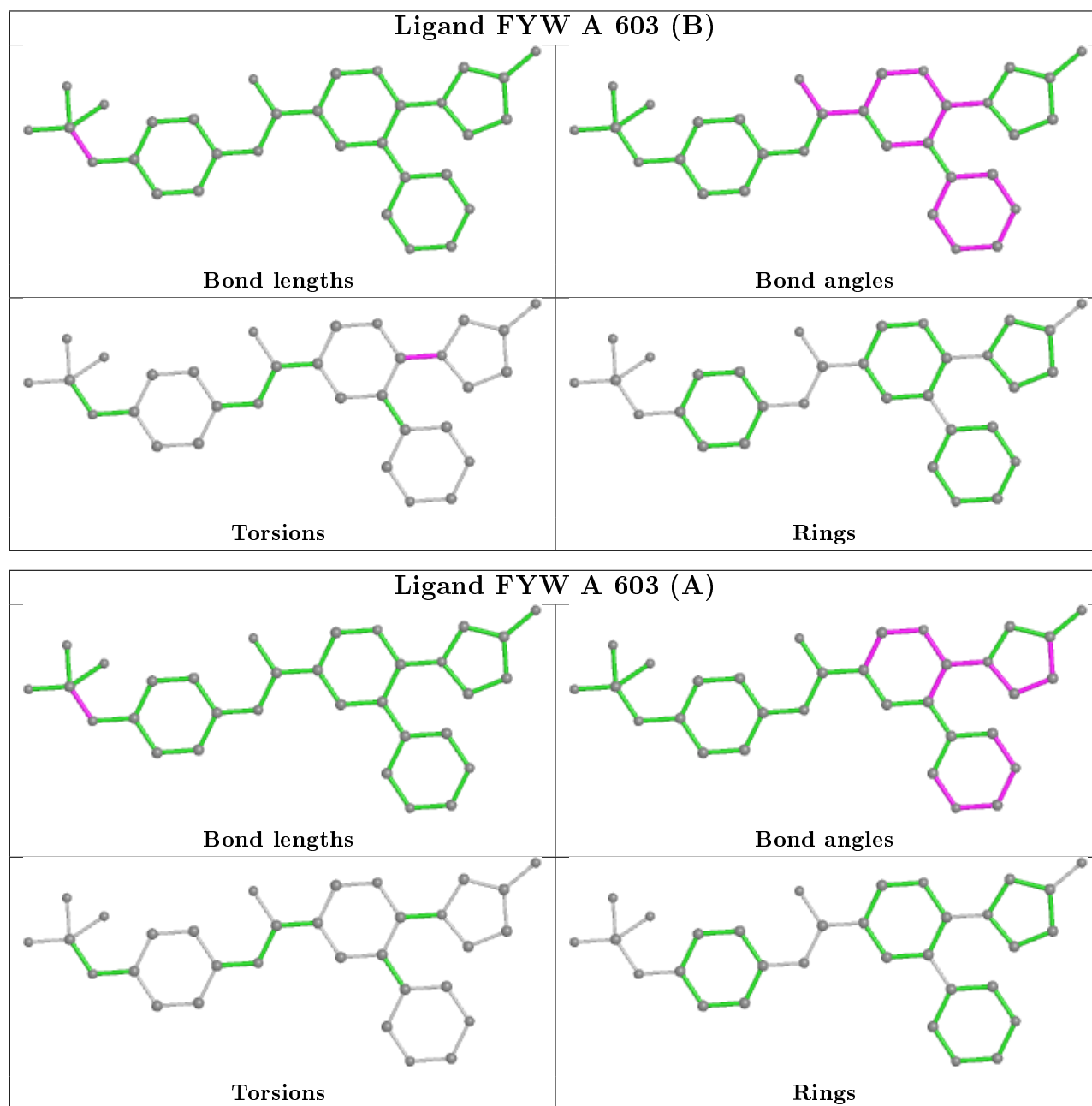
There are no ring outliers.

2 monomers are involved in 2 short contacts:

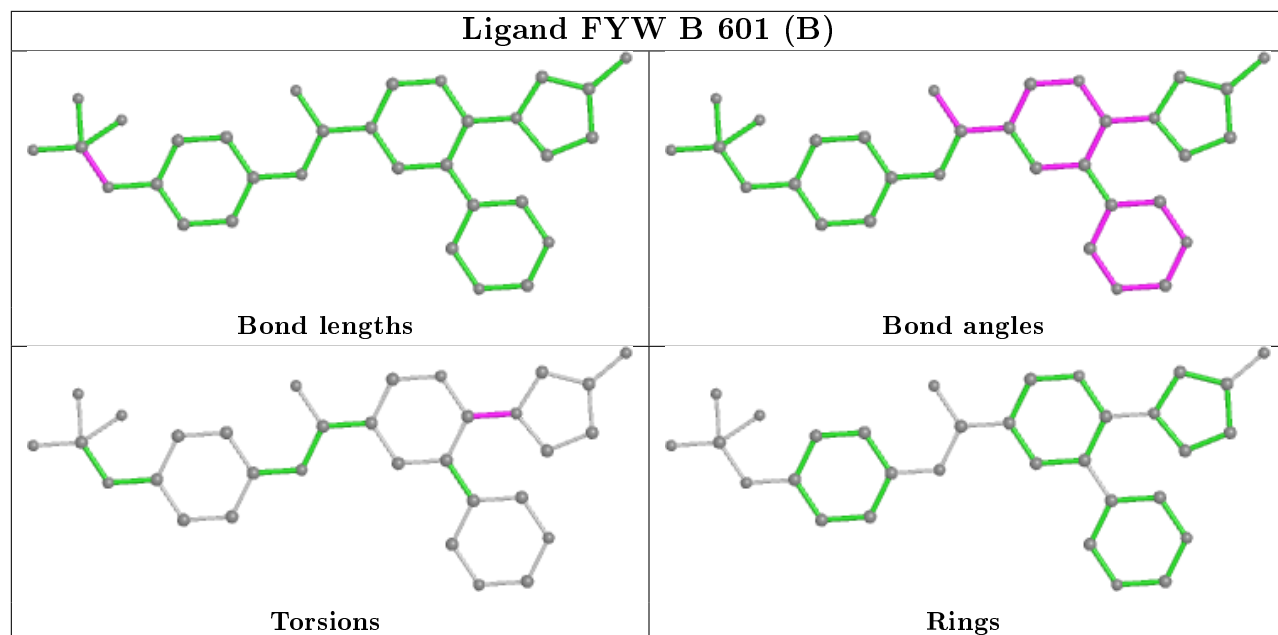
Mol	Chain	Res	Type	Clashes	Symm-Clashes
4	A	603[A]	FYW	1	0
5	B	602	STI	1	0

The following is a two-dimensional graphical depiction of Mogul quality analysis of bond lengths, bond angles, torsion angles, and ring geometry for all instances of the Ligand of Interest. In addition, ligands with molecular weight > 250 and outliers as shown on the validation Tables will also be included. For torsion angles, if less than 5% of the Mogul distribution of torsion angles is within 10 degrees of the torsion angle in question, then that torsion angle is considered an outlier. Any bond that is central to one or more torsion angles identified as an outlier by Mogul will be

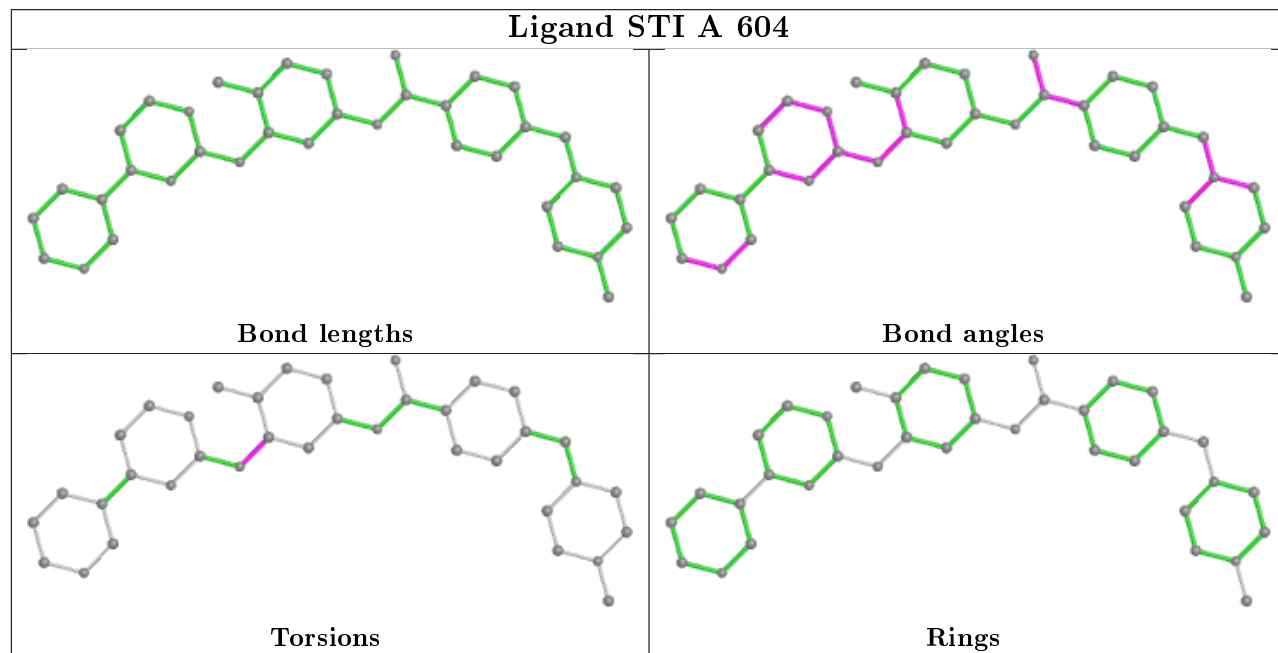
highlighted in the graph. For rings, the root-mean-square deviation (RMSD) between the ring in question and similar rings identified by Mogul is calculated over all ring torsion angles. If the average RMSD is greater than 60 degrees and the minimal RMSD between the ring in question and any Mogul-identified rings is also greater than 60 degrees, then that ring is considered an outlier. The outliers are highlighted in purple. The color gray indicates Mogul did not find sufficient equivalents in the CSD to analyse the geometry.

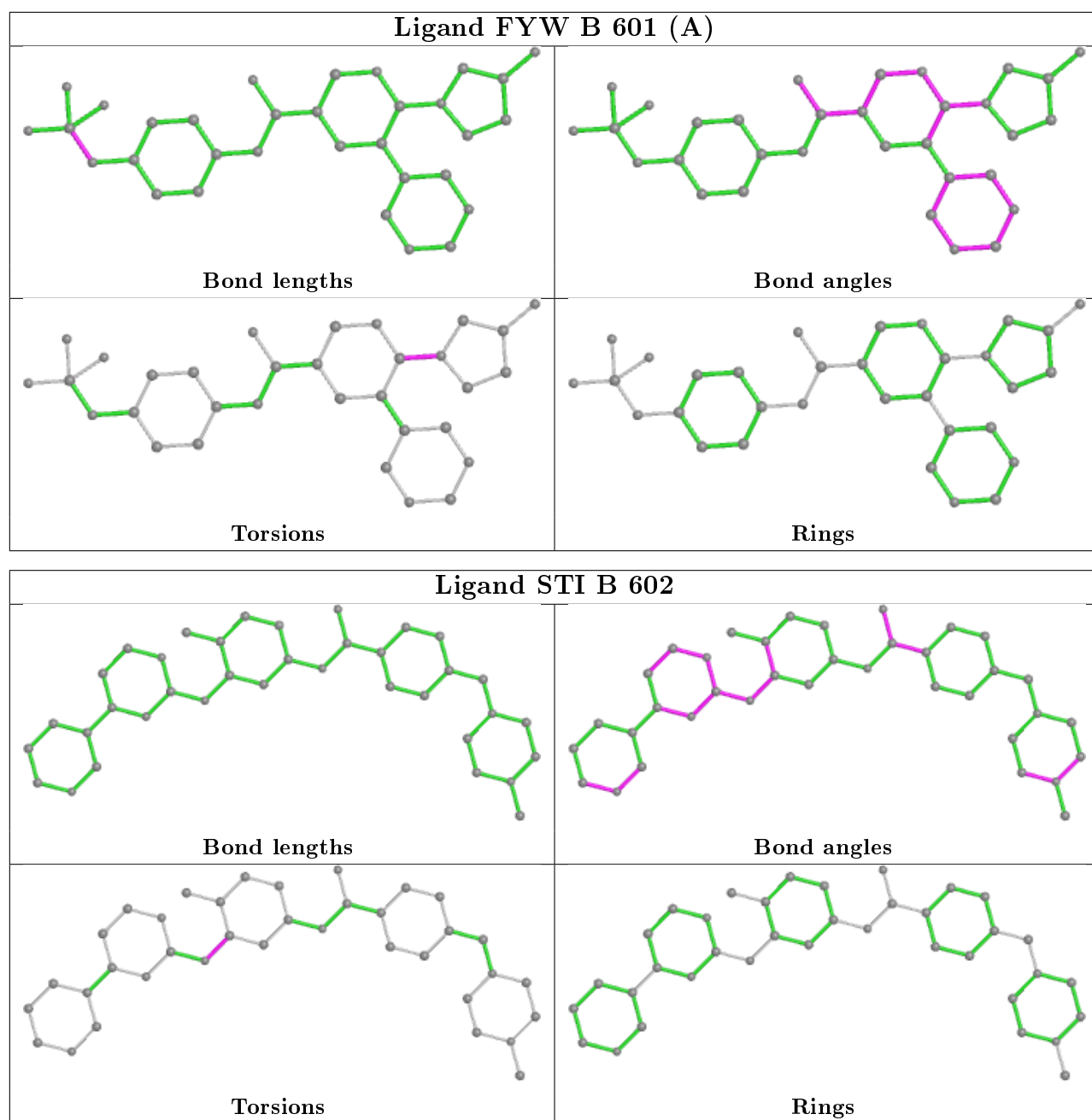


Ligand FYW B 601 (B)



Ligand STI A 604





5.7 Other polymers [i](#)

There are no such residues in this entry.

5.8 Polymer linkage issues [i](#)

There are no chain breaks in this entry.

6 Fit of model and data ⓘ

6.1 Protein, DNA and RNA chains ⓘ

In the following table, the column labelled ‘#RSRZ> 2’ contains the number (and percentage) of RSRZ outliers, followed by percent RSRZ outliers for the chain as percentile scores relative to all X-ray entries and entries of similar resolution. The OWAB column contains the minimum, median, 95th percentile and maximum values of the occupancy-weighted average B-factor per residue. The column labelled ‘Q< 0.9’ lists the number of (and percentage) of residues with an average occupancy less than 0.9.

Mol	Chain	Analysed	<RSRZ>	#RSRZ>2	OWAB(Å ²)	Q<0.9
1	A	287/293 (97%)	-0.11	6 (2%) 63 63	15, 26, 56, 114	0
1	B	283/293 (96%)	0.32	29 (10%) 6 6	20, 39, 71, 109	0
All	All	570/586 (97%)	0.11	35 (6%) 21 20	15, 33, 67, 114	0

All (35) RSRZ outliers are listed below:

Mol	Chain	Res	Type	RSRZ
1	A	297	MET	6.9
1	B	408	THR	5.2
1	B	410	ASP	5.2
1	B	409	GLY	5.1
1	A	295	ASP	5.0
1	B	293	LYS	4.7
1	B	406	LEU	4.4
1	B	299	VAL	3.7
1	B	418	ALA	3.5
1	B	417	GLY	3.4
1	B	416	ALA	3.3
1	B	298	GLU	3.0
1	B	405	ARG	2.9
1	A	298	GLU	2.8
1	B	420	PHE	2.8
1	B	259	THR	2.7
1	B	282	LYS	2.7
1	B	407	MET	2.7
1	B	326	ARG	2.7
1	B	518	GLU	2.6
1	B	413	THR	2.6
1	B	280	TRP	2.5
1	B	412	TYR	2.5
1	B	262	THR	2.4

Continued on next page...

Continued from previous page...

Mol	Chain	Res	Type	RSRZ
1	A	294	GLU	2.3
1	B	404	SER	2.2
1	B	402	GLY	2.2
1	B	330	PHE	2.2
1	B	414	ALA	2.2
1	A	282	LYS	2.1
1	B	292	LEU	2.1
1	A	269	GLY	2.1
1	B	519	SER	2.1
1	B	261	ILE	2.0
1	B	328	PRO	2.0

6.2 Non-standard residues in protein, DNA, RNA chains ⓘ

There are no non-standard protein/DNA/RNA residues in this entry.

6.3 Carbohydrates ⓘ

There are no carbohydrates in this entry.

6.4 Ligands ⓘ

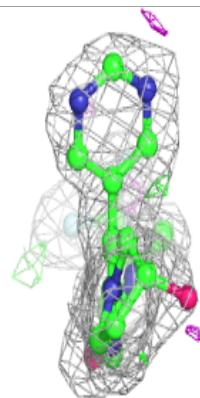
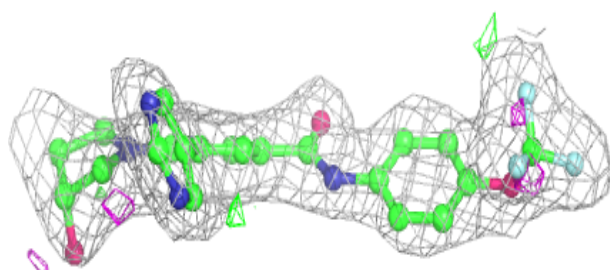
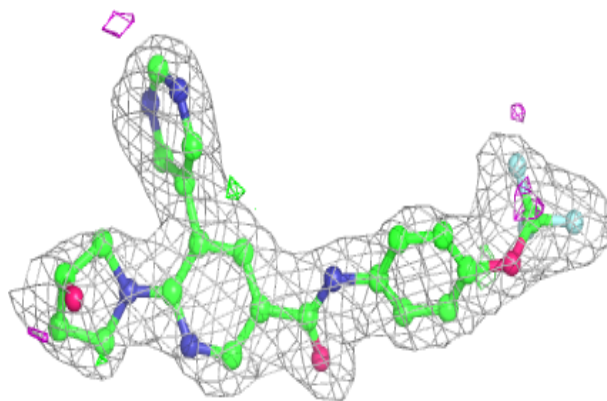
In the following table, the Atoms column lists the number of modelled atoms in the group and the number defined in the chemical component dictionary. The B-factors column lists the minimum, median, 95th percentile and maximum values of B factors of atoms in the group. The column labelled 'Q< 0.9' lists the number of atoms with occupancy less than 0.9.

Mol	Type	Chain	Res	Atoms	RSCC	RSR	B-factors(Å ²)	Q<0.9
4	FYW	B	601[B]	32/32	0.93	0.14	28,34,38,38	32
4	FYW	B	601[A]	32/32	0.93	0.14	30,41,47,48	32
5	STI	B	602	37/37	0.96	0.09	26,30,37,38	0
4	FYW	A	603[B]	32/32	0.97	0.09	35,36,39,39	32
5	STI	A	604	37/37	0.97	0.10	19,22,26,28	0
2	GOL	A	601	6/6	0.97	0.14	24,26,26,27	0
4	FYW	A	603[A]	32/32	0.97	0.09	11,19,28,32	32
3	CL	A	602	1/1	0.98	0.10	37,37,37,37	0

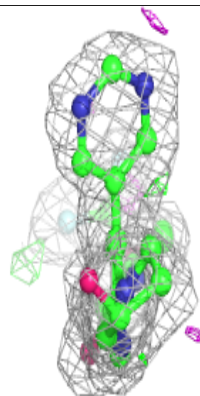
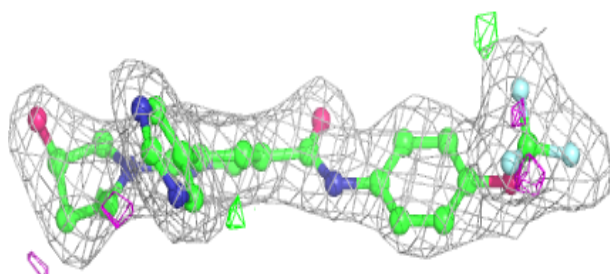
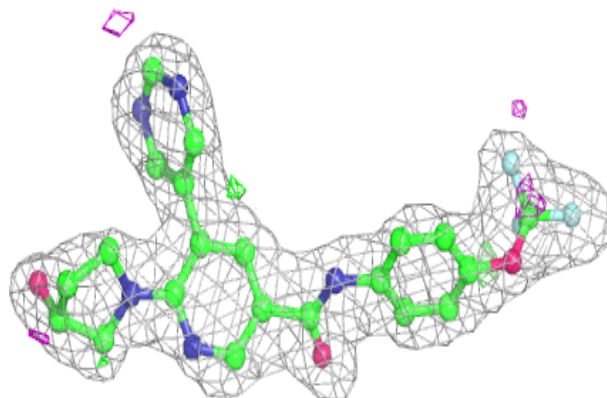
The following is a graphical depiction of the model fit to experimental electron density of all instances of the Ligand of Interest. In addition, ligands with molecular weight > 250 and outliers as shown on the geometry validation Tables will also be included. Each fit is shown from different orientation to approximate a three-dimensional view.

Electron density around FYW B 601 (B):

$2mF_o-DF_c$ (at 0.7 rmsd) in gray
 mF_o-DF_c (at 3 rmsd) in purple (negative)
and green (positive)

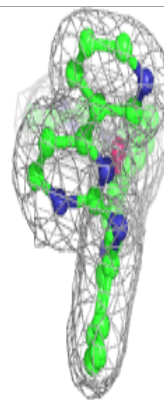
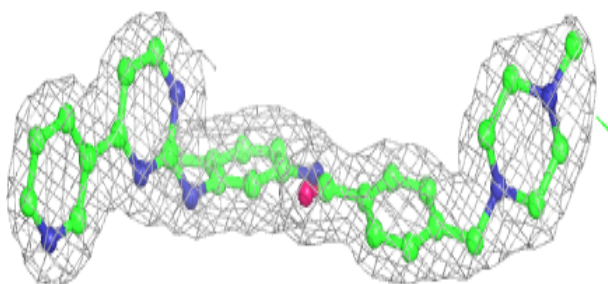
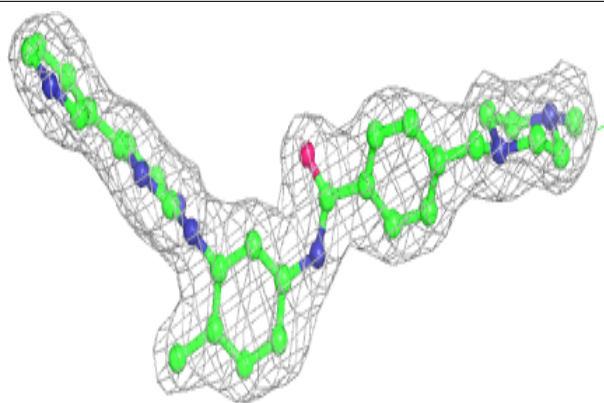
**Electron density around FYW B 601 (A):**

$2mF_o-DF_c$ (at 0.7 rmsd) in gray
 mF_o-DF_c (at 3 rmsd) in purple (negative)
and green (positive)

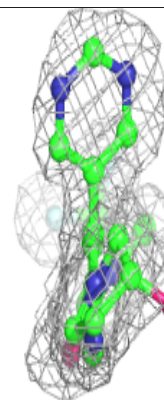
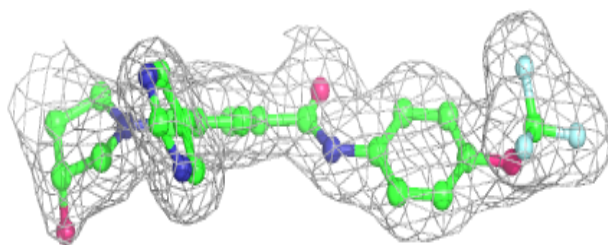
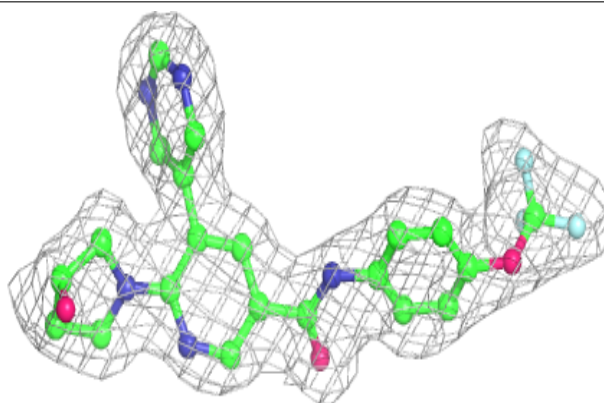


Electron density around STI B 602:

$2mF_o-DF_c$ (at 0.7 rmsd) in gray
 mF_o-DF_c (at 3 rmsd) in purple (negative)
and green (positive)

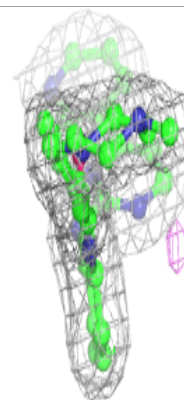
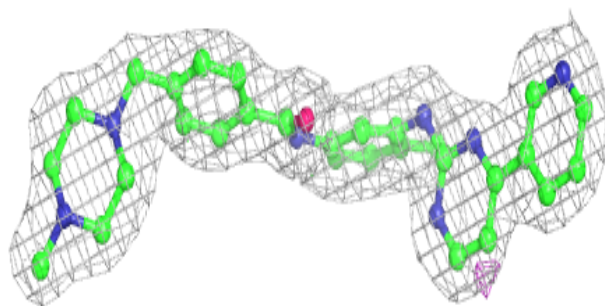
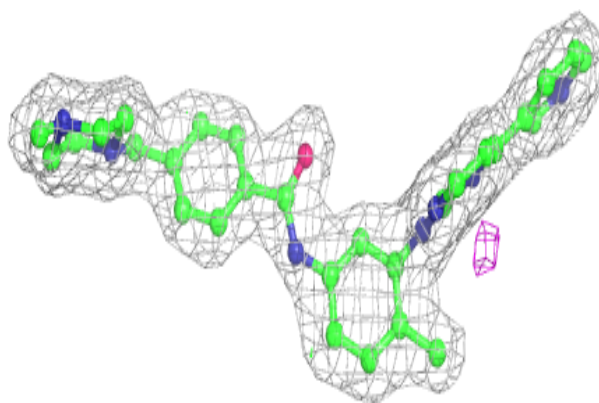
**Electron density around FYW A 603 (B):**

$2mF_o-DF_c$ (at 0.7 rmsd) in gray
 mF_o-DF_c (at 3 rmsd) in purple (negative)
and green (positive)

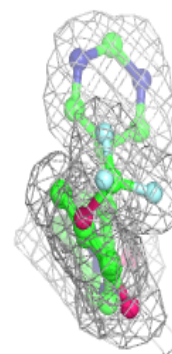
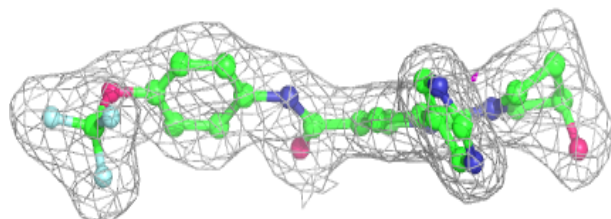
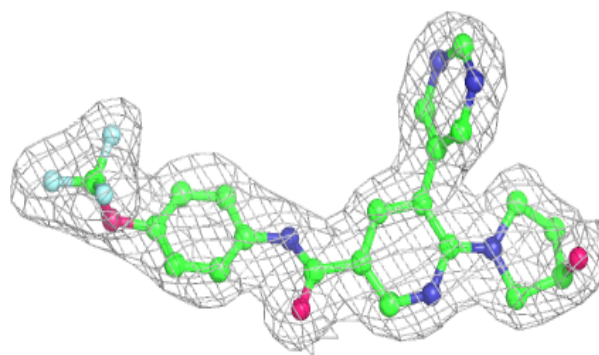


Electron density around STI A 604:

$2mF_o-DF_c$ (at 0.7 rmsd) in gray
 mF_o-DF_c (at 3 rmsd) in purple (negative)
and green (positive)

**Electron density around FYW A 603 (A):**

$2mF_o-DF_c$ (at 0.7 rmsd) in gray
 mF_o-DF_c (at 3 rmsd) in purple (negative)
and green (positive)



6.5 Other polymers [i](#)

There are no such residues in this entry.