



# Full wwPDB X-ray Structure Validation Report ⓘ

Aug 6, 2020 – 08:21 PM BST

PDB ID : 6HDA  
Title : Crystal structure of the potassium channel MtTMEM175 with cesium  
Authors : Brunner, J.D.; Jakob, R.P.; Schulze, T.; Neldner, Y.; Moroni, A.; Thiel, G.;  
Maier, T.; Schenck, S.  
Deposited on : 2018-08-17  
Resolution : 3.80 Å(reported)

This is a Full wwPDB X-ray Structure Validation Report for a publicly released PDB entry.

We welcome your comments at [validation@mail.wwpdb.org](mailto:validation@mail.wwpdb.org)

A user guide is available at

<https://www.wwpdb.org/validation/2017/XrayValidationReportHelp>

with specific help available everywhere you see the ⓘ symbol.

---

The following versions of software and data (see [references ⓘ](#)) were used in the production of this report:

MolProbity : 4.02b-467  
Mogul : 1.8.5 (274361), CSD as541be (2020)  
Xtriage (Phenix) : 1.13  
EDS : 2.13.1  
buster-report : 1.1.7 (2018)  
Percentile statistics : 20191225.v01 (using entries in the PDB archive December 25th 2019)  
Refmac : 5.8.0158  
CCP4 : 7.0.044 (Gargrove)  
Ideal geometry (proteins) : Engh & Huber (2001)  
Ideal geometry (DNA, RNA) : Parkinson et al. (1996)  
Validation Pipeline (wwPDB-VP) : 2.13.1

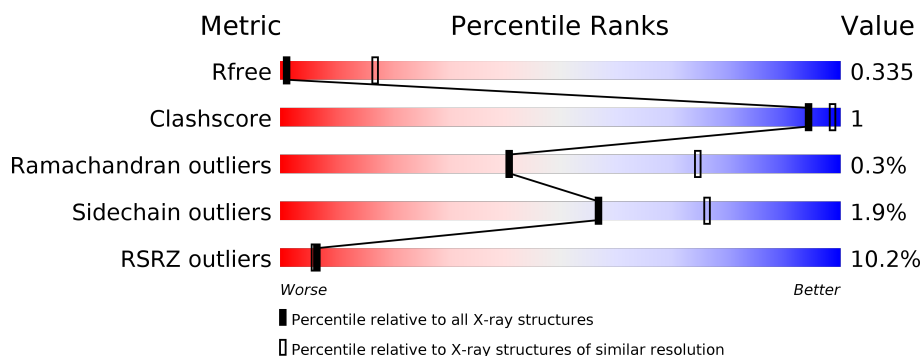
# 1 Overall quality at a glance ⓘ

The following experimental techniques were used to determine the structure:

## *X-RAY DIFFRACTION*

The reported resolution of this entry is 3.80 Å.

Percentile scores (ranging between 0-100) for global validation metrics of the entry are shown in the following graphic. The table shows the number of entries on which the scores are based.



Metric	Whole archive (#Entries)	Similar resolution (#Entries, resolution range(Å))
$R_{free}$	130704	1212 (4.00-3.60)
Clashscore	141614	1288 (4.00-3.60)
Ramachandran outliers	138981	1243 (4.00-3.60)
Sidechain outliers	138945	1237 (4.00-3.60)
RSRZ outliers	127900	1121 (4.00-3.60)

The table below summarises the geometric issues observed across the polymeric chains and their fit to the electron density. The red, orange, yellow and green segments on the lower bar indicate the fraction of residues that contain outliers for  $\geq 3$ , 2, 1 and 0 types of geometric quality criteria respectively. A grey segment represents the fraction of residues that are not modelled. The numeric value for each fraction is indicated below the corresponding segment, with a dot representing fractions  $\leq 5\%$ . The upper red bar (where present) indicates the fraction of residues that have poor fit to the electron density. The numeric value is given above the bar.

Mol	Chain	Length	Quality of chain
1	A	486	<div> <div>9%</div> <div>91%</div> <div>5%</div> </div>
2	B	255	<div> <div>11%</div> <div>86%</div> <div>5%</div> <div>9%</div> </div>
3	C	2	<div> <div>100%</div> </div>

The following table lists non-polymeric compounds, carbohydrate monomers and non-standard residues in protein, DNA, RNA chains that are outliers for geometric or electron-density-fit criteria:

Mol	Type	Chain	Res	Chirality	Geometry	Clashes	Electron density
4	LMT	B	501	-	-	-	X

## 2 Entry composition

There are 6 unique types of molecules in this entry. The entry contains 11082 atoms, of which 5543 are hydrogens and 0 are deuteriums.

In the tables below, the ZeroOcc column contains the number of atoms modelled with zero occupancy, the AltConf column contains the number of residues with at least one atom in alternate conformation and the Trace column contains the number of residues modelled with at most 2 atoms.

- Molecule 1 is a protein called Nanobody,Maltose/maltodextrin-binding periplasmic protein.

Mol	Chain	Residues	Atoms						ZeroOcc	AltConf	Trace
			Total	C	H	N	O	S			
1	A	461	7098	2288	3526	594	680	10	0	0	0

There are 3 discrepancies between the modelled and reference sequences:

Chain	Residue	Modelled	Actual	Comment	Reference
A	484	PRO	-	expression tag	UNP P0AEX9
A	485	GLY	-	expression tag	UNP P0AEX9
A	486	ALA	-	expression tag	UNP P0AEX9

- Molecule 2 is a protein called TMEM175.

Mol	Chain	Residues	Atoms						ZeroOcc	AltConf	Trace
			Total	C	H	N	O	S			
2	B	232	3854	1278	1963	287	318	8	0	0	0

There are 9 discrepancies between the modelled and reference sequences:

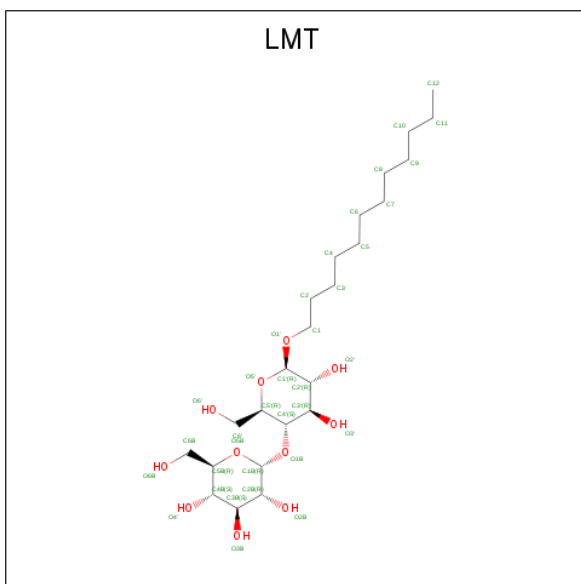
Chain	Residue	Modelled	Actual	Comment	Reference
B	0	MET	-	initiating methionine	UNP E4TN31
B	1	SER	-	expression tag	UNP E4TN31
B	248	ALA	-	expression tag	UNP E4TN31
B	249	LEU	-	expression tag	UNP E4TN31
B	250	GLU	-	expression tag	UNP E4TN31
B	251	VAL	-	expression tag	UNP E4TN31
B	252	LEU	-	expression tag	UNP E4TN31
B	253	PHE	-	expression tag	UNP E4TN31
B	254	GLN	-	expression tag	UNP E4TN31

- Molecule 3 is an oligosaccharide called alpha-D-glucopyranose-(1-4)-alpha-D-glucopyranose.



Mol	Chain	Residues	Atoms				ZeroOcc	AltConf	Trace
3	C	2	Total	C	H	O	0	0	0
			44	12	21	11			

- Molecule 4 is DODECYL-BETA-D-MALTOSE (three-letter code: LMT) (formula:  $C_{24}H_{46}O_{11}$ ).



Mol	Chain	Residues	Atoms				ZeroOcc	AltConf
4	B	1	Total	C	H	O	0	0
			63	19	33	11		

- Molecule 5 is CESIUM ION (three-letter code: CS) (formula: Cs).

Mol	Chain	Residues	Atoms		ZeroOcc	AltConf
5	B	1	Total	Cs	0	0
			1	1		

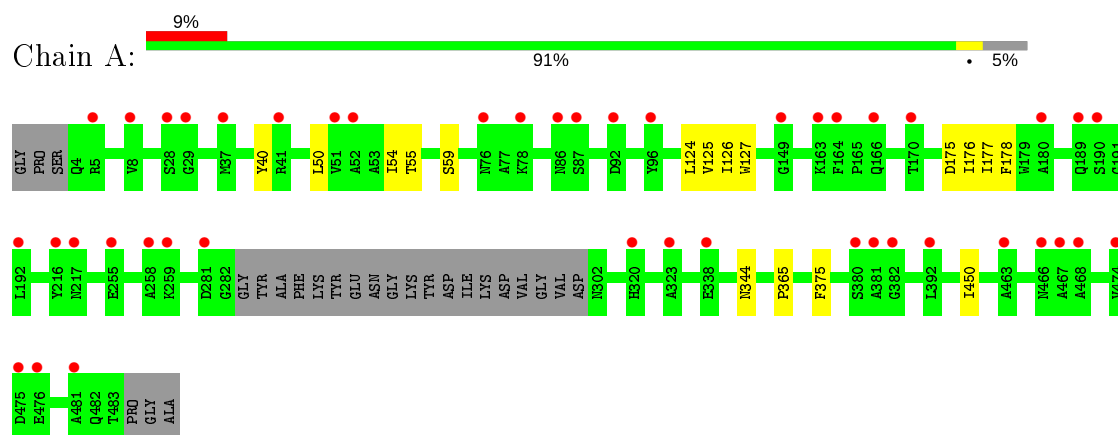
- Molecule 6 is water.

Mol	Chain	Residues	Atoms		ZeroOcc	AltConf
6	A	10	Total	O	0	0
			10	10		
6	B	12	Total	O	0	0
			12	12		

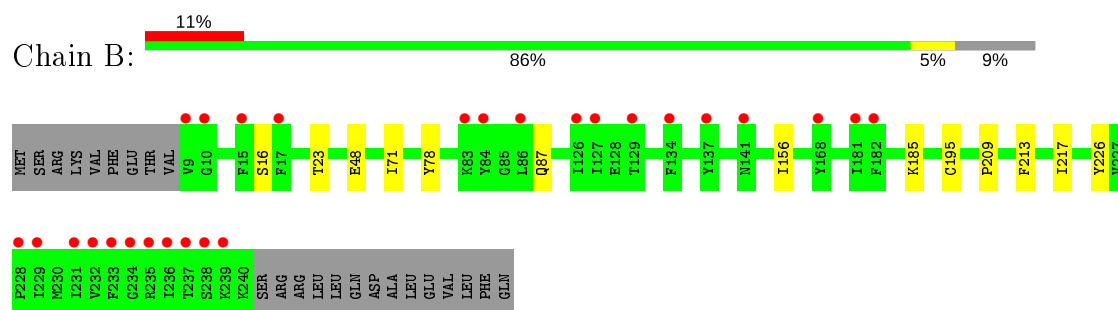
### 3 Residue-property plots [i](#)

These plots are drawn for all protein, RNA, DNA and oligosaccharide chains in the entry. The first graphic for a chain summarises the proportions of the various outlier classes displayed in the second graphic. The second graphic shows the sequence view annotated by issues in geometry and electron density. Residues are color-coded according to the number of geometric quality criteria for which they contain at least one outlier: green = 0, yellow = 1, orange = 2 and red = 3 or more. A red dot above a residue indicates a poor fit to the electron density ( $RSRZ > 2$ ). Stretches of 2 or more consecutive residues without any outlier are shown as a green connector. Residues present in the sample, but not in the model, are shown in grey.

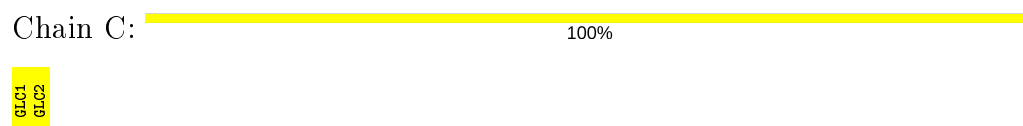
- Molecule 1: Nanobody,Maltose/maltodextrin-binding periplasmic protein



- Molecule 2: TMEM175



- Molecule 3: alpha-D-glucopyranose-(1-4)-alpha-D-glucopyranose



## 4 Data and refinement statistics

Property	Value	Source
Space group	P 4 21 2	Depositor
Cell constants a, b, c, $\alpha$ , $\beta$ , $\gamma$	131.68Å 131.68Å 131.46Å 90.00° 90.00° 90.00°	Depositor
Resolution (Å)	30.21 – 3.80 30.21 – 3.80	Depositor EDS
% Data completeness (in resolution range)	100.0 (30.21-3.80) 100.0 (30.21-3.80)	Depositor EDS
$R_{merge}$	(Not available)	Depositor
$R_{sym}$	(Not available)	Depositor
$\langle I/\sigma(I) \rangle$ <sup>1</sup>	1.86 (at 3.75Å)	Xtriage
Refinement program	BUSTER 2.10.3	Depositor
R, $R_{free}$	0.280 , 0.337 0.284 , 0.335	Depositor DCC
$R_{free}$ test set	1188 reflections (10.00%)	wwPDB-VP
Wilson B-factor (Å <sup>2</sup> )	169.5	Xtriage
Anisotropy	0.561	Xtriage
Bulk solvent $k_{sol}$ (e/Å <sup>3</sup> ), $B_{sol}$ (Å <sup>2</sup> )	0.34 , 131.7	EDS
L-test for twinning <sup>2</sup>	$\langle  L  \rangle = 0.41$ , $\langle L^2 \rangle = 0.24$	Xtriage
Estimated twinning fraction	0.078 for -h,-l,-k 0.024 for l,-k,h	Xtriage
$F_o, F_c$ correlation	0.90	EDS
Total number of atoms	11082	wwPDB-VP
Average B, all atoms (Å <sup>2</sup> )	170.0	wwPDB-VP

Xtriage's analysis on translational NCS is as follows: *The largest off-origin peak in the Patterson function is 6.76% of the height of the origin peak. No significant pseudotranslation is detected.*

<sup>1</sup>Intensities estimated from amplitudes.

<sup>2</sup>Theoretical values of  $\langle |L| \rangle$ ,  $\langle L^2 \rangle$  for acentric reflections are 0.5, 0.333 respectively for untwinned datasets, and 0.375, 0.2 for perfectly twinned datasets.

## 5 Model quality

### 5.1 Standard geometry

Bond lengths and bond angles in the following residue types are not validated in this section: CS, GLC, LMT

The Z score for a bond length (or angle) is the number of standard deviations the observed value is removed from the expected value. A bond length (or angle) with  $|Z| > 5$  is considered an outlier worth inspection. RMSZ is the root-mean-square of all Z scores of the bond lengths (or angles).

Mol	Chain	Bond lengths		Bond angles	
		RMSZ	$\# Z  > 5$	RMSZ	$\# Z  > 5$
1	A	0.38	0/3658	0.54	0/4968
2	B	0.51	0/1941	0.61	0/2637
All	All	0.43	0/5599	0.56	0/7605

There are no bond length outliers.

There are no bond angle outliers.

There are no chirality outliers.

There are no planarity outliers.

### 5.2 Too-close contacts

In the following table, the Non-H and H(model) columns list the number of non-hydrogen atoms and hydrogen atoms in the chain respectively. The H(added) column lists the number of hydrogen atoms added and optimized by MolProbity. The Clashes column lists the number of clashes within the asymmetric unit, whereas Symm-Clashes lists symmetry related clashes.

Mol	Chain	Non-H	H(model)	H(added)	Clashes	Symm-Clashes
1	A	3572	3526	3526	12	0
2	B	1891	1963	1963	2	0
3	C	23	21	21	0	0
4	B	30	33	33	0	0
5	B	1	0	0	0	0
6	A	10	0	0	0	0
6	B	12	0	0	0	0
All	All	5539	5543	5543	14	0

The all-atom clashscore is defined as the number of clashes found per 1000 atoms (including hydrogen atoms). The all-atom clashscore for this structure is 1.

All (14) close contacts within the same asymmetric unit are listed below, sorted by their clash magnitude.

Atom-1	Atom-2	Interatomic distance (Å)	Clash overlap (Å)
1:A:126:ILE:HG23	1:A:176:ILE:HG13	1.58	0.86
1:A:125:VAL:N	1:A:175:ASP:OD2	2.12	0.82
1:A:124:LEU:HA	1:A:175:ASP:OD2	1.93	0.69
1:A:54:ILE:O	1:A:54:ILE:HG23	2.02	0.58
1:A:177:ILE:HD12	1:A:178:PHE:H	1.70	0.56
1:A:177:ILE:HD12	1:A:178:PHE:N	2.21	0.56
1:A:40:TYR:CE2	1:A:50:LEU:HB2	2.45	0.52
2:B:23:THR:HB	2:B:87:GLN:OE1	2.10	0.50
1:A:55:THR:HG1	1:A:59:SER:HG	1.57	0.48
1:A:50:LEU:C	1:A:50:LEU:HD23	2.34	0.48
1:A:127:TRP:O	1:A:177:ILE:HD12	2.16	0.45
2:B:213:PHE:CD2	2:B:217:ILE:HD11	2.51	0.44
1:A:40:TYR:CZ	1:A:50:LEU:HD12	2.53	0.43
1:A:124:LEU:CA	1:A:175:ASP:OD2	2.64	0.43

There are no symmetry-related clashes.

## 5.3 Torsion angles ⓘ

### 5.3.1 Protein backbone ⓘ

In the following table, the Percentiles column shows the percent Ramachandran outliers of the chain as a percentile score with respect to all X-ray entries followed by that with respect to entries of similar resolution.

The Analysed column shows the number of residues for which the backbone conformation was analysed, and the total number of residues.

Mol	Chain	Analysed	Favoured	Allowed	Outliers	Percentiles	
1	A	457/486 (94%)	427 (93%)	29 (6%)	1 (0%)	47	79
2	B	230/255 (90%)	219 (95%)	10 (4%)	1 (0%)	34	70
All	All	687/741 (93%)	646 (94%)	39 (6%)	2 (0%)	41	74

All (2) Ramachandran outliers are listed below:

Mol	Chain	Res	Type
1	A	450	ILE
2	B	209	PRO

### 5.3.2 Protein sidechains ⓘ

In the following table, the Percentiles column shows the percent sidechain outliers of the chain as a percentile score with respect to all X-ray entries followed by that with respect to entries of similar resolution.

The Analysed column shows the number of residues for which the sidechain conformation was analysed, and the total number of residues.

Mol	Chain	Analysed	Rotameric	Outliers	Percentiles	
1	A	371/389 (95%)	368 (99%)	3 (1%)	81	89
2	B	209/231 (90%)	201 (96%)	8 (4%)	33	61
All	All	580/620 (94%)	569 (98%)	11 (2%)	57	76

All (11) residues with a non-rotameric sidechain are listed below:

Mol	Chain	Res	Type
1	A	344	ASN
1	A	365	PRO
1	A	375	PHE
2	B	16	SER
2	B	48	GLU
2	B	71	ILE
2	B	78	TYR
2	B	156	ILE
2	B	185	LYS
2	B	195	CYS
2	B	226	TYR

Some sidechains can be flipped to improve hydrogen bonding and reduce clashes. There are no such sidechains identified.

### 5.3.3 RNA ⓘ

There are no RNA molecules in this entry.

## 5.4 Non-standard residues in protein, DNA, RNA chains ⓘ

There are no non-standard protein/DNA/RNA residues in this entry.

## 5.5 Carbohydrates ⓘ

2 monosaccharides are modelled in this entry.

In the following table, the Counts columns list the number of bonds (or angles) for which Mogul statistics could be retrieved, the number of bonds (or angles) that are observed in the model and the number of bonds (or angles) that are defined in the Chemical Component Dictionary. The Link column lists molecule types, if any, to which the group is linked. The Z score for a bond length (or angle) is the number of standard deviations the observed value is removed from the expected value. A bond length (or angle) with  $|Z| > 2$  is considered an outlier worth inspection. RMSZ is the root-mean-square of all Z scores of the bond lengths (or angles).

Mol	Type	Chain	Res	Link	Bond lengths			Bond angles		
					Counts	RMSZ	# $ Z  > 2$	Counts	RMSZ	# $ Z  > 2$
3	GLC	C	1	3	12,12,12	1.91	3 (25%)	17,17,17	2.17	7 (41%)
3	GLC	C	2	3	11,11,12	1.75	4 (36%)	15,15,17	1.57	1 (6%)

In the following table, the Chirals column lists the number of chiral outliers, the number of chiral centers analysed, the number of these observed in the model and the number defined in the Chemical Component Dictionary. Similar counts are reported in the Torsion and Rings columns. '-' means no outliers of that kind were identified.

Mol	Type	Chain	Res	Link	Chirals	Torsions	Rings
3	GLC	C	1	3	-	0/2/22/22	0/1/1/1
3	GLC	C	2	3	-	0/2/19/22	0/1/1/1

All (7) bond length outliers are listed below:

Mol	Chain	Res	Type	Atoms	Z	Observed(Å)	Ideal(Å)
3	C	1	GLC	C1-C2	4.74	1.63	1.52
3	C	2	GLC	C2-C3	3.43	1.57	1.52
3	C	1	GLC	C3-C2	2.99	1.59	1.52
3	C	1	GLC	C4-C3	2.61	1.59	1.52
3	C	2	GLC	O2-C2	-2.16	1.38	1.43
3	C	2	GLC	C1-C2	2.07	1.56	1.52
3	C	2	GLC	O5-C1	-2.06	1.40	1.43

All (8) bond angle outliers are listed below:

Mol	Chain	Res	Type	Atoms	Z	Observed(°)	Ideal(°)
3	C	1	GLC	C1-O5-C5	3.90	121.03	113.66
3	C	2	GLC	C1-O5-C5	3.87	117.44	112.19
3	C	1	GLC	O2-C2-C3	-3.85	101.44	110.35
3	C	1	GLC	O5-C1-C2	3.36	116.28	110.28

*Continued on next page...*

*Continued from previous page...*

Mol	Chain	Res	Type	Atoms	Z	Observed(°)	Ideal(°)
3	C	1	GLC	O2-C2-C1	2.92	115.92	109.16
3	C	1	GLC	O4-C4-C3	-2.60	104.33	110.35
3	C	1	GLC	C1-C2-C3	2.29	115.07	110.31
3	C	1	GLC	O5-C5-C6	-2.07	101.30	106.44

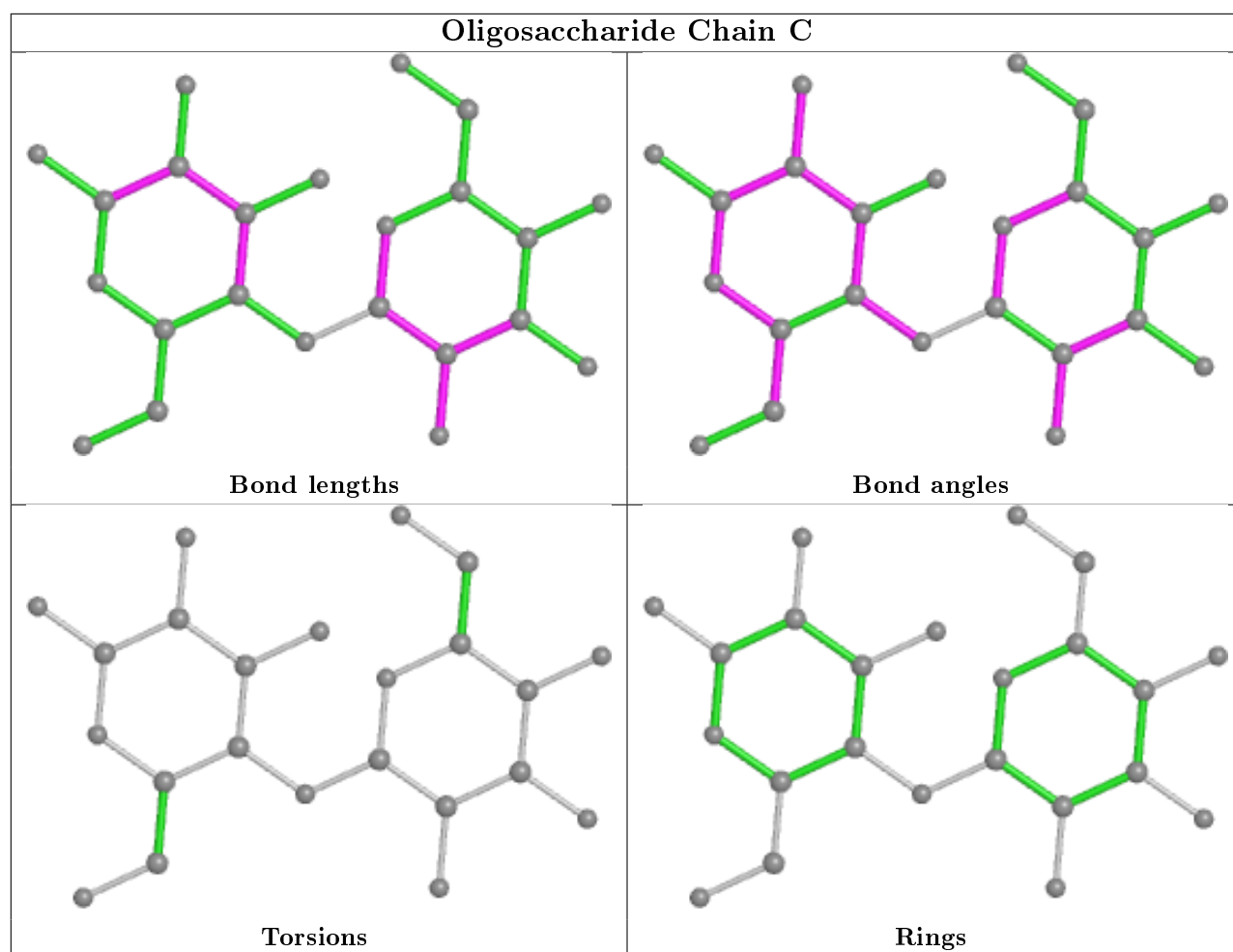
There are no chirality outliers.

There are no torsion outliers.

There are no ring outliers.

No monomer is involved in short contacts.

The following is a two-dimensional graphical depiction of Mogul quality analysis of bond lengths, bond angles, torsion angles, and ring geometry for oligosaccharide.



## 5.6 Ligand geometry [i](#)

Of 2 ligands modelled in this entry, 1 is monoatomic - leaving 1 for Mogul analysis.

In the following table, the Counts columns list the number of bonds (or angles) for which Mogul statistics could be retrieved, the number of bonds (or angles) that are observed in the model and the number of bonds (or angles) that are defined in the Chemical Component Dictionary. The Link column lists molecule types, if any, to which the group is linked. The Z score for a bond length (or angle) is the number of standard deviations the observed value is removed from the expected value. A bond length (or angle) with  $|Z| > 2$  is considered an outlier worth inspection. RMSZ is the root-mean-square of all Z scores of the bond lengths (or angles).

Mol	Type	Chain	Res	Link	Bond lengths			Bond angles		
					Counts	RMSZ	# $ Z  > 2$	Counts	RMSZ	# $ Z  > 2$
4	LMT	B	501	-	31,31,36	1.35	6 (19%)	42,42,47	1.35	7 (16%)

In the following table, the Chirals column lists the number of chiral outliers, the number of chiral centers analysed, the number of these observed in the model and the number defined in the Chemical Component Dictionary. Similar counts are reported in the Torsion and Rings columns. '-' means no outliers of that kind were identified.

Mol	Type	Chain	Res	Link	Chirals	Torsions	Rings
4	LMT	B	501	-	-	5/16/56/61	0/2/2/2

All (6) bond length outliers are listed below:

Mol	Chain	Res	Type	Atoms	Z	Observed(Å)	Ideal(Å)
4	B	501	LMT	C3'-C4'	2.88	1.60	1.52
4	B	501	LMT	C4B-C3B	2.59	1.58	1.52
4	B	501	LMT	C1B-C2B	2.57	1.59	1.52
4	B	501	LMT	C3'-C2'	2.42	1.58	1.52
4	B	501	LMT	C4B-C5B	2.16	1.57	1.53
4	B	501	LMT	C6B-C5B	2.13	1.59	1.51

All (7) bond angle outliers are listed below:

Mol	Chain	Res	Type	Atoms	Z	Observed(°)	Ideal(°)
4	B	501	LMT	O1B-C4'-C5'	-3.07	101.03	109.45
4	B	501	LMT	O3B-C3B-C4B	-2.80	103.87	110.35
4	B	501	LMT	C1B-O5B-C5B	2.62	118.83	113.69
4	B	501	LMT	O2'-C2'-C3'	-2.36	104.90	110.35
4	B	501	LMT	O5'-C1'-O1'	-2.26	104.61	109.97
4	B	501	LMT	O2B-C2B-C3B	-2.24	105.17	110.35
4	B	501	LMT	O5'-C1'-C2'	-2.19	105.71	110.35

There are no chirality outliers.

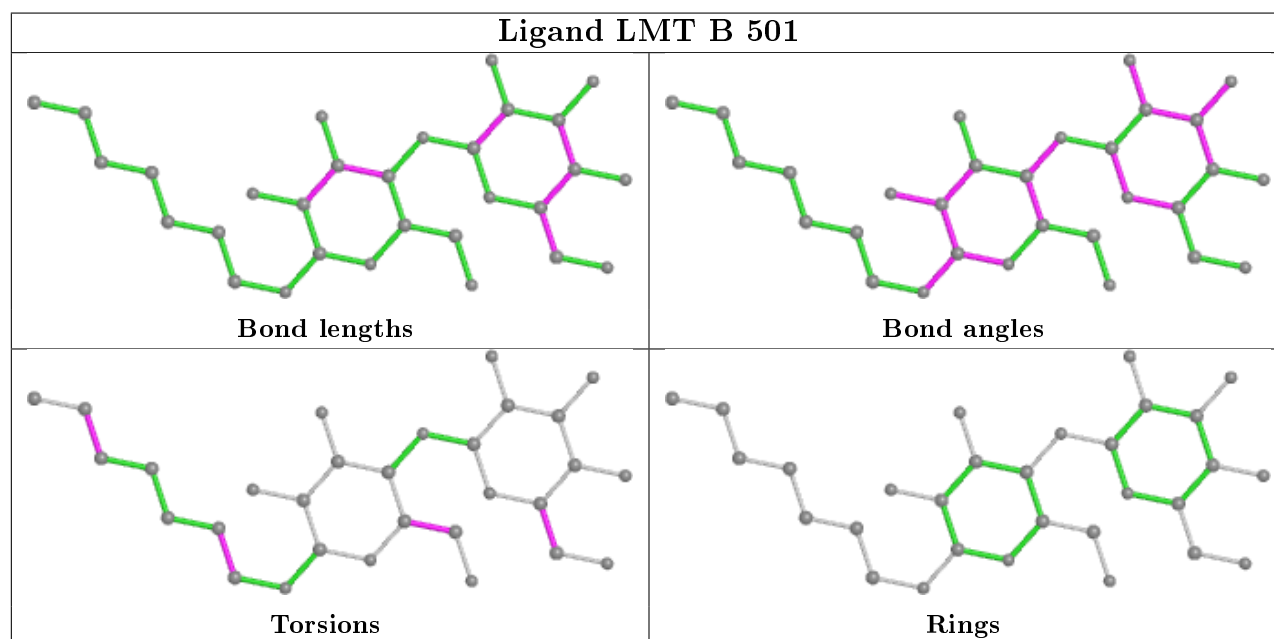
All (5) torsion outliers are listed below:

Mol	Chain	Res	Type	Atoms
4	B	501	LMT	O5'-C5'-C6'-O6'
4	B	501	LMT	C4'-C5'-C6'-O6'
4	B	501	LMT	O5B-C5B-C6B-O6B
4	B	501	LMT	C4-C5-C6-C7
4	B	501	LMT	O1'-C1-C2-C3

There are no ring outliers.

No monomer is involved in short contacts.

The following is a two-dimensional graphical depiction of Mogul quality analysis of bond lengths, bond angles, torsion angles, and ring geometry for all instances of the Ligand of Interest. In addition, ligands with molecular weight > 250 and outliers as shown on the validation Tables will also be included. For torsion angles, if less than 5% of the Mogul distribution of torsion angles is within 10 degrees of the torsion angle in question, then that torsion angle is considered an outlier. Any bond that is central to one or more torsion angles identified as an outlier by Mogul will be highlighted in the graph. For rings, the root-mean-square deviation (RMSD) between the ring in question and similar rings identified by Mogul is calculated over all ring torsion angles. If the average RMSD is greater than 60 degrees and the minimal RMSD between the ring in question and any Mogul-identified rings is also greater than 60 degrees, then that ring is considered an outlier. The outliers are highlighted in purple. The color gray indicates Mogul did not find sufficient equivalents in the CSD to analyse the geometry.



## 5.7 Other polymers ⓘ

There are no such residues in this entry.

## 5.8 Polymer linkage issues ⓘ

There are no chain breaks in this entry.

## 6 Fit of model and data ⓘ

### 6.1 Protein, DNA and RNA chains ⓘ

In the following table, the column labelled ‘#RSRZ> 2’ contains the number (and percentage) of RSRZ outliers, followed by percent RSRZ outliers for the chain as percentile scores relative to all X-ray entries and entries of similar resolution. The OWAB column contains the minimum, median, 95<sup>th</sup> percentile and maximum values of the occupancy-weighted average B-factor per residue. The column labelled ‘Q< 0.9’ lists the number of (and percentage) of residues with an average occupancy less than 0.9.

Mol	Chain	Analysed	<RSRZ>	#RSRZ>2	OWAB(Å <sup>2</sup> )	Q<0.9
1	A	461/486 (94%)	0.41	44 (9%) 8 7	116, 189, 272, 299	0
2	B	232/255 (90%)	0.42	27 (11%) 4 5	52, 113, 248, 279	0
All	All	693/741 (93%)	0.41	71 (10%) 6 6	52, 171, 269, 299	0

All (71) RSRZ outliers are listed below:

Mol	Chain	Res	Type	RSRZ
2	B	233	PHE	10.9
2	B	237	THR	9.6
2	B	234	GLY	8.1
2	B	15	PHE	6.7
2	B	238	SER	5.9
2	B	236	ILE	5.9
2	B	127	ILE	5.6
1	A	474	VAL	4.9
2	B	235	ARG	4.8
1	A	28	SER	4.6
1	A	468	ALA	4.6
2	B	10	GLY	4.5
1	A	189	GLN	4.4
1	A	467	ALA	4.3
1	A	96	TYR	4.2
1	A	475	ASP	4.2
2	B	232	VAL	4.2
2	B	126	ILE	4.2
1	A	170	THR	4.0
1	A	52	ALA	4.0
1	A	392	LEU	3.9
2	B	137	TYR	3.9
2	B	141	ASN	3.8
1	A	180	ALA	3.8

*Continued on next page...*

*Continued from previous page...*

Mol	Chain	Res	Type	RSRZ
1	A	380	SER	3.7
2	B	229	ILE	3.7
1	A	166	GLN	3.6
1	A	382	GLY	3.6
2	B	182	PHE	3.6
2	B	17	PHE	3.5
1	A	463	ALA	3.5
1	A	381	ALA	3.4
1	A	5	ARG	3.3
1	A	258	ALA	3.3
1	A	78	LYS	3.3
1	A	92	ASP	3.2
2	B	129	THR	3.2
1	A	216	TYR	3.2
2	B	86	LEU	3.2
1	A	259	LYS	3.1
2	B	168	TYR	3.0
1	A	87	SER	3.0
1	A	29	GLY	3.0
1	A	476	GLU	2.9
2	B	84	TYR	2.9
1	A	41	ARG	2.9
1	A	192	LEU	2.9
2	B	83	LYS	2.8
1	A	190	SER	2.7
2	B	231	ILE	2.6
1	A	323	ALA	2.6
1	A	338	GLU	2.6
1	A	163	LYS	2.4
1	A	51	VAL	2.4
1	A	320	HIS	2.4
1	A	164	PHE	2.4
1	A	255	GLU	2.3
1	A	86	ASN	2.3
2	B	134	PHE	2.3
1	A	76	ASN	2.3
1	A	281	ASP	2.3
1	A	8	VAL	2.2
1	A	466	ASN	2.2
1	A	149	GLY	2.2
2	B	228	PRO	2.2
2	B	239	LYS	2.2

*Continued on next page...*

*Continued from previous page...*

Mol	Chain	Res	Type	RSRZ
1	A	217	ASN	2.2
2	B	181	ILE	2.1
2	B	9	VAL	2.0
1	A	481	ALA	2.0
1	A	37	MET	2.0

## 6.2 Non-standard residues in protein, DNA, RNA chains [i](#)

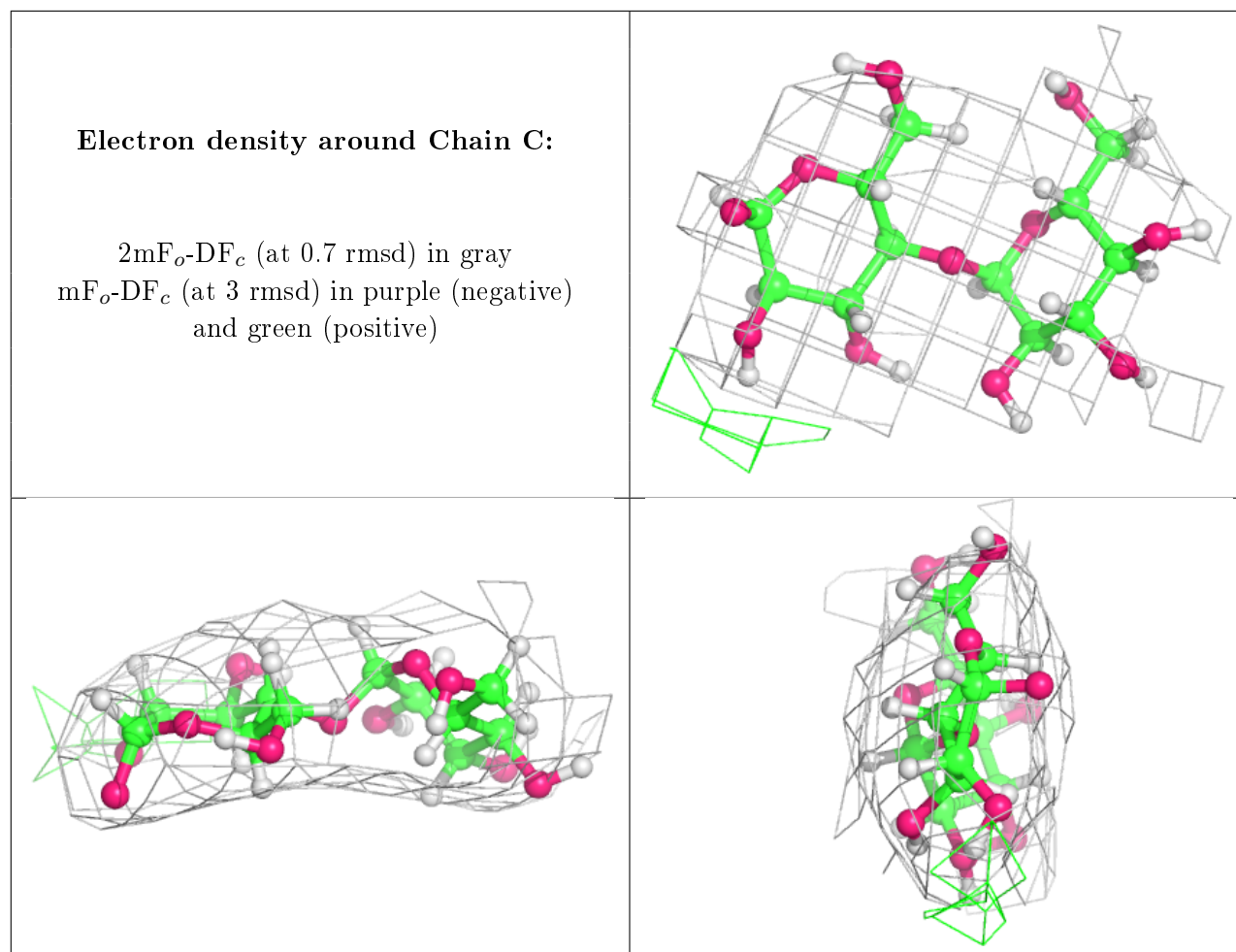
There are no non-standard protein/DNA/RNA residues in this entry.

## 6.3 Carbohydrates [i](#)

In the following table, the Atoms column lists the number of modelled atoms in the group and the number defined in the chemical component dictionary. The B-factors column lists the minimum, median, 95<sup>th</sup> percentile and maximum values of B factors of atoms in the group. The column labelled 'Q< 0.9' lists the number of atoms with occupancy less than 0.9.

Mol	Type	Chain	Res	Atoms	RSCC	RSR	B-factors( $\text{\AA}^2$ )	Q<0.9
3	GLC	C	2	11/12	0.89	0.24	85,100,105,107	0
3	GLC	C	1	12/12	0.90	0.52	64,71,78,85	0

The following is a graphical depiction of the model fit to experimental electron density for oligosaccharide. Each fit is shown from different orientation to approximate a three-dimensional view.

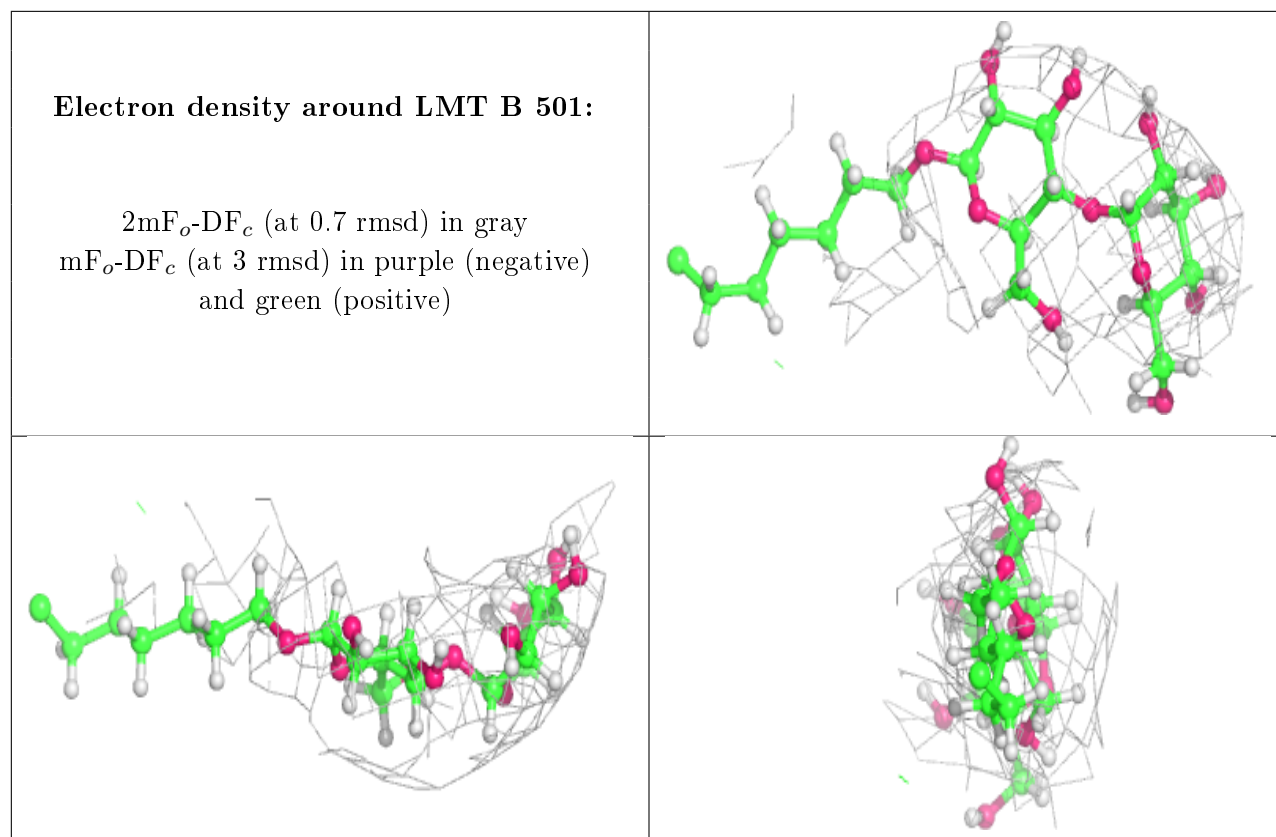


## 6.4 Ligands [i](#)

In the following table, the Atoms column lists the number of modelled atoms in the group and the number defined in the chemical component dictionary. The B-factors column lists the minimum, median, 95<sup>th</sup> percentile and maximum values of B factors of atoms in the group. The column labelled 'Q < 0.9' lists the number of atoms with occupancy less than 0.9.

Mol	Type	Chain	Res	Atoms	RSCC	RSR	B-factors( $\text{\AA}^2$ )	Q<0.9
4	LMT	B	501	30/35	0.66	0.46	89,100,105,107	0
5	CS	B	502	1/1	0.93	0.54	122,122,122,122	1

The following is a graphical depiction of the model fit to experimental electron density of all instances of the Ligand of Interest. In addition, ligands with molecular weight > 250 and outliers as shown on the geometry validation Tables will also be included. Each fit is shown from different orientation to approximate a three-dimensional view.



## 6.5 Other polymers [i](#)

There are no such residues in this entry.