



wwPDB X-ray Structure Validation Summary Report ⓘ

Aug 7, 2020 – 10:45 PM BST

PDB ID : 1HJV
Title : Crystal structure of hcgp-39 in complex with chitin tetramer
Authors : Houston, D.R.; Recklies, A.D.; Krupa, J.C.; Van Aalten, D.M.F.
Deposited on : 2003-02-28
Resolution : 2.75 Å(reported)

This is a wwPDB X-ray Structure Validation Summary Report for a publicly released PDB entry.

We welcome your comments at validation@mail.wwpdb.org

A user guide is available at

<https://www.wwpdb.org/validation/2017/XrayValidationReportHelp>

with specific help available everywhere you see the ⓘ symbol.

The following versions of software and data (see [references ⓘ](#)) were used in the production of this report:

MolProbity : 4.02b-467
Mogul : 1.8.5 (274361), CSD as541be (2020)
Xtriage (Phenix) : 1.13
EDS : 2.13.1
Percentile statistics : 20191225.v01 (using entries in the PDB archive December 25th 2019)
Refmac : 5.8.0158
CCP4 : 7.0.044 (Gargrove)
Ideal geometry (proteins) : Engh & Huber (2001)
Ideal geometry (DNA, RNA) : Parkinson et al. (1996)
Validation Pipeline (wwPDB-VP) : 2.13.1

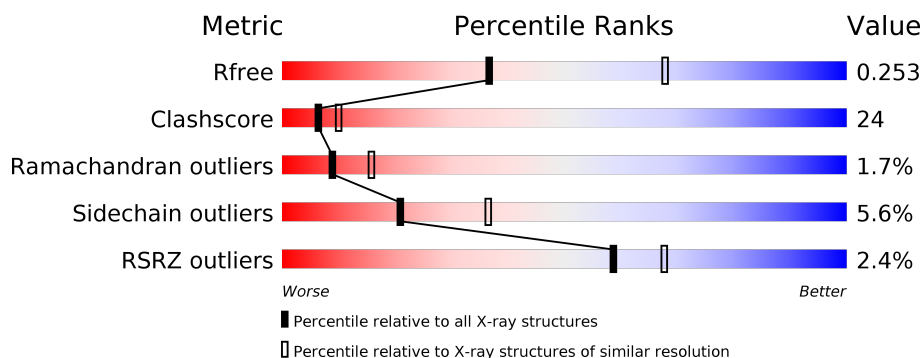
1 Overall quality at a glance

The following experimental techniques were used to determine the structure:

X-RAY DIFFRACTION

The reported resolution of this entry is 2.75 Å.

Percentile scores (ranging between 0-100) for global validation metrics of the entry are shown in the following graphic. The table shows the number of entries on which the scores are based.



Metric	Whole archive (#Entries)	Similar resolution (#Entries, resolution range(Å))
R_{free}	130704	1235 (2.78-2.74)
Clashscore	141614	1277 (2.78-2.74)
Ramachandran outliers	138981	1257 (2.78-2.74)
Sidechain outliers	138945	1257 (2.78-2.74)
RSRZ outliers	127900	1207 (2.78-2.74)

The table below summarises the geometric issues observed across the polymeric chains and their fit to the electron density. The red, orange, yellow and green segments on the lower bar indicate the fraction of residues that contain outliers for ≥ 3 , 2, 1 and 0 types of geometric quality criteria respectively. A grey segment represents the fraction of residues that are not modelled. The numeric value for each fraction is indicated below the corresponding segment, with a dot representing fractions $\leq 5\%$. The upper red bar (where present) indicates the fraction of residues that have poor fit to the electron density. The numeric value is given above the bar.

Mol	Chain	Length	Quality of chain
1	A	362	<div> <div>%</div> <div> <div></div> <div>64%</div> <div>34%</div> <div>.</div> </div> </div>
1	B	362	<div> <div>2%</div> <div> <div></div> <div>65%</div> <div>32%</div> <div>.</div> </div> </div>
1	C	362	<div> <div>4%</div> <div> <div></div> <div>46%</div> <div>48%</div> <div>6%</div> </div> </div>
1	D	362	<div> <div>3%</div> <div> <div></div> <div>56%</div> <div>41%</div> <div>.</div> </div> </div>
2	E	3	<div> <div></div> <div> <div>33%</div> <div>33%</div> <div>33%</div> </div> </div>
2	G	3	<div> <div></div> <div>100%</div> </div>

Continued on next page...

Continued from previous page...

Mol	Chain	Length	Quality of chain
2	I	3	 67%33%
2	K	3	 33%67%
3	F	4	 50%50%
3	H	4	 25%25%50%
3	J	4	 25%75%
3	L	4	 25%25%50%

The following table lists non-polymeric compounds, carbohydrate monomers and non-standard residues in protein, DNA, RNA chains that are outliers for geometric or electron-density-fit criteria:

Mol	Type	Chain	Res	Chirality	Geometry	Clashes	Electron density
3	NAG	J	3	-	-	X	-
3	NAG	L	3	-	-	X	-

2 Entry composition [i](#)

There are 6 unique types of molecules in this entry. The entry contains 12296 atoms, of which 0 are hydrogens and 0 are deuteriums.

In the tables below, the ZeroOcc column contains the number of atoms modelled with zero occupancy, the AltConf column contains the number of residues with at least one atom in alternate conformation and the Trace column contains the number of residues modelled with at most 2 atoms.

- Molecule 1 is a protein called CHITINASE-3 LIKE PROTEIN 1.

Mol	Chain	Residues	Atoms					ZeroOcc	AltConf	Trace
1	A	362	Total	C	N	O	S	0	2	0
			2871	1833	495	532	11			
1	B	362	Total	C	N	O	S	0	1	0
			2868	1831	496	530	11			
1	C	362	Total	C	N	O	S	0	2	0
			2873	1834	496	532	11			
1	D	362	Total	C	N	O	S	0	1	0
			2866	1830	494	531	11			

There are 4 discrepancies between the modelled and reference sequences:

Chain	Residue	Modelled	Actual	Comment	Reference
A	311	ILE	THR	conflict	UNP P36222
B	311	ILE	THR	conflict	UNP P36222
A	311	ILE	THR	conflict	UNP P36222
B	311	ILE	THR	conflict	UNP P36222

- Molecule 2 is an oligosaccharide called 2-acetamido-2-deoxy-beta-D-glucopyranose-(1-4)-2-acetamido-2-deoxy-beta-D-glucopyranose-(1-4)-2-acetamido-2-deoxy-beta-D-glucopyranose.



Mol	Chain	Residues	Atoms				ZeroOcc	AltConf	Trace
2	E	3	Total	C	N	O	0	0	0
			43	24	3	16			
2	G	3	Total	C	N	O	0	0	0
			43	24	3	16			
2	I	3	Total	C	N	O	0	0	0
			43	24	3	16			

Continued on next page...

Continued from previous page...

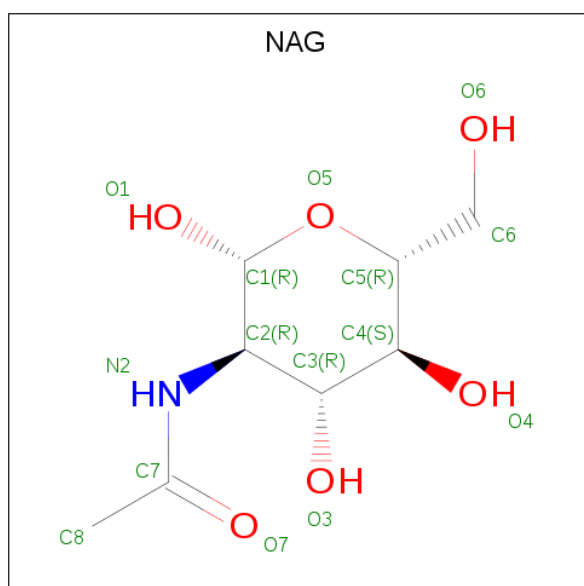
Mol	Chain	Residues	Atoms				ZeroOcc	AltConf	Trace
2	K	3	Total	C	N	O	0	0	0
			43	24	3	16			

- Molecule 3 is an oligosaccharide called 2-acetamido-2-deoxy-beta-D-glucopyranose-(1-4)-2-acetamido-2-deoxy-beta-D-glucopyranose-(1-4)-2-acetamido-2-deoxy-beta-D-glucopyranose-(1-4)-2-acetamido-2-deoxy-beta-D-glucopyranose.



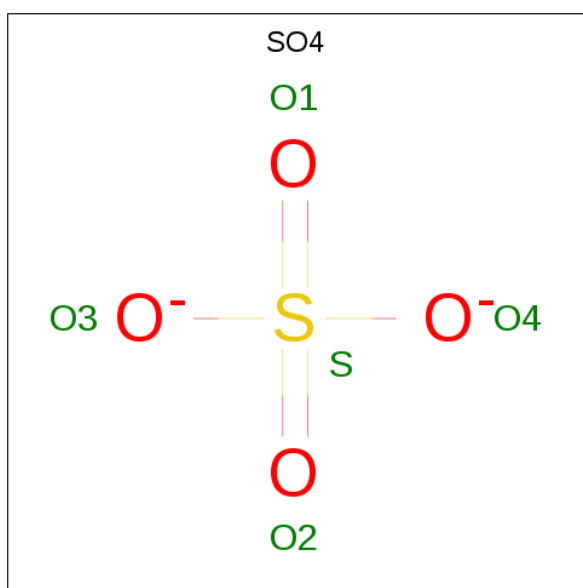
Mol	Chain	Residues	Atoms				ZeroOcc	AltConf	Trace
3	F	4	Total	C	N	O	0	0	0
			57	32	4	21			
3	H	4	Total	C	N	O	0	0	0
			57	32	4	21			
3	J	4	Total	C	N	O	0	0	0
			57	32	4	21			
3	L	4	Total	C	N	O	0	0	0
			57	32	4	21			

- Molecule 4 is 2-acetamido-2-deoxy-beta-D-glucopyranose (three-letter code: NAG) (formula: $C_8H_{15}NO_6$).



Mol	Chain	Residues	Atoms				ZeroOcc	AltConf
4	A	1	Total	C	N	O	0	0
			14	8	1	5		
4	B	1	Total	C	N	O	0	0
			14	8	1	5		
4	C	1	Total	C	N	O	0	0
			14	8	1	5		
4	D	1	Total	C	N	O	0	0
			14	8	1	5		

- Molecule 5 is SULFATE ION (three-letter code: SO4) (formula: O₄S).



Mol	Chain	Residues	Atoms			ZeroOcc	AltConf
5	A	1	Total	O	S	0	0
			5	4	1		
5	A	1	Total	O	S	0	0
			5	4	1		
5	A	1	Total	O	S	0	0
			5	4	1		
5	B	1	Total	O	S	0	0
			5	4	1		
5	B	1	Total	O	S	0	0
			5	4	1		
5	B	1	Total	O	S	0	0
			5	4	1		
5	C	1	Total	O	S	0	0
			5	4	1		
5	C	1	Total	O	S	0	0
			5	4	1		

Continued on next page...

Continued from previous page...

Mol	Chain	Residues	Atoms			ZeroOcc	AltConf
5	C	1	Total	O	S	0	0
			5	4	1		
5	D	1	Total	O	S	0	0
			5	4	1		
5	D	1	Total	O	S	0	0
			5	4	1		
5	D	1	Total	O	S	0	0
			5	4	1		

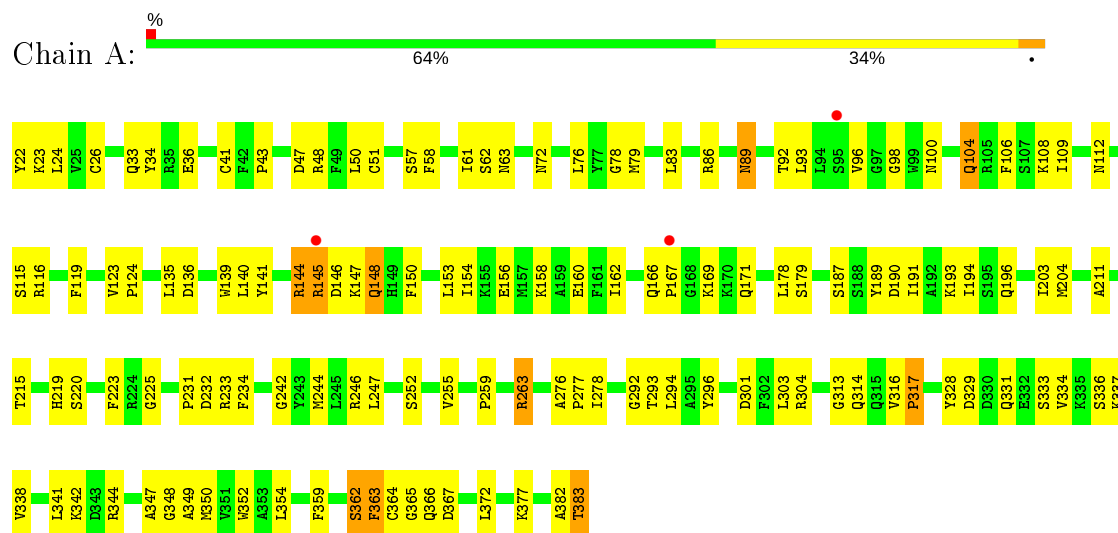
- Molecule 6 is water.

Mol	Chain	Residues	Atoms		ZeroOcc	AltConf
6	A	101	Total	O	0	0
			101	101		
6	B	80	Total	O	0	0
			80	80		
6	C	53	Total	O	0	0
			53	53		
6	D	68	Total	O	0	0
			68	68		

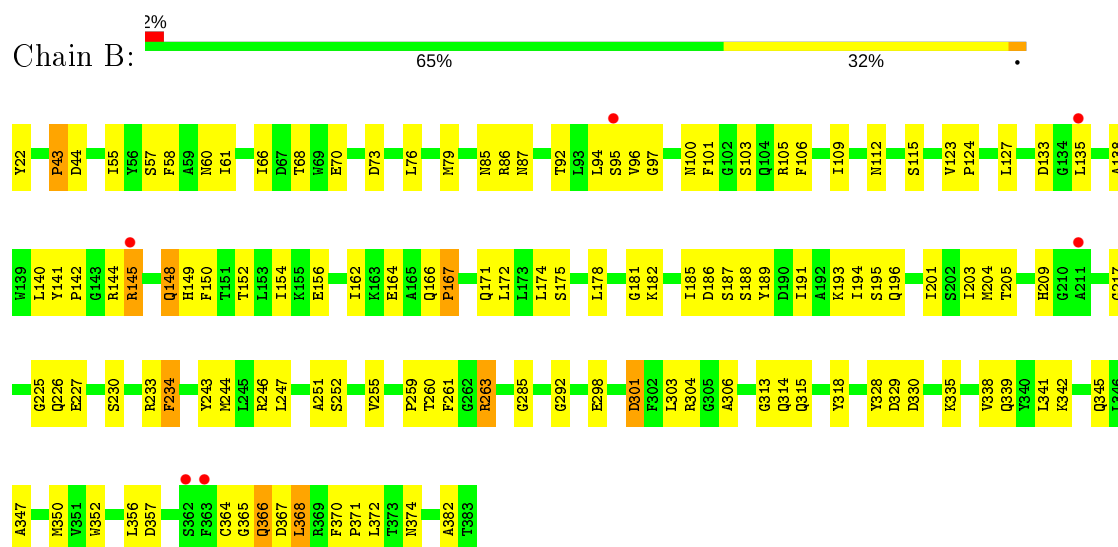
3 Residue-property plots

These plots are drawn for all protein, RNA, DNA and oligosaccharide chains in the entry. The first graphic for a chain summarises the proportions of the various outlier classes displayed in the second graphic. The second graphic shows the sequence view annotated by issues in geometry and electron density. Residues are color-coded according to the number of geometric quality criteria for which they contain at least one outlier: green = 0, yellow = 1, orange = 2 and red = 3 or more. A red dot above a residue indicates a poor fit to the electron density ($RSRZ > 2$). Stretches of 2 or more consecutive residues without any outlier are shown as a green connector. Residues present in the sample, but not in the model, are shown in grey.

• Molecule 1: CHITINASE-3 LIKE PROTEIN 1

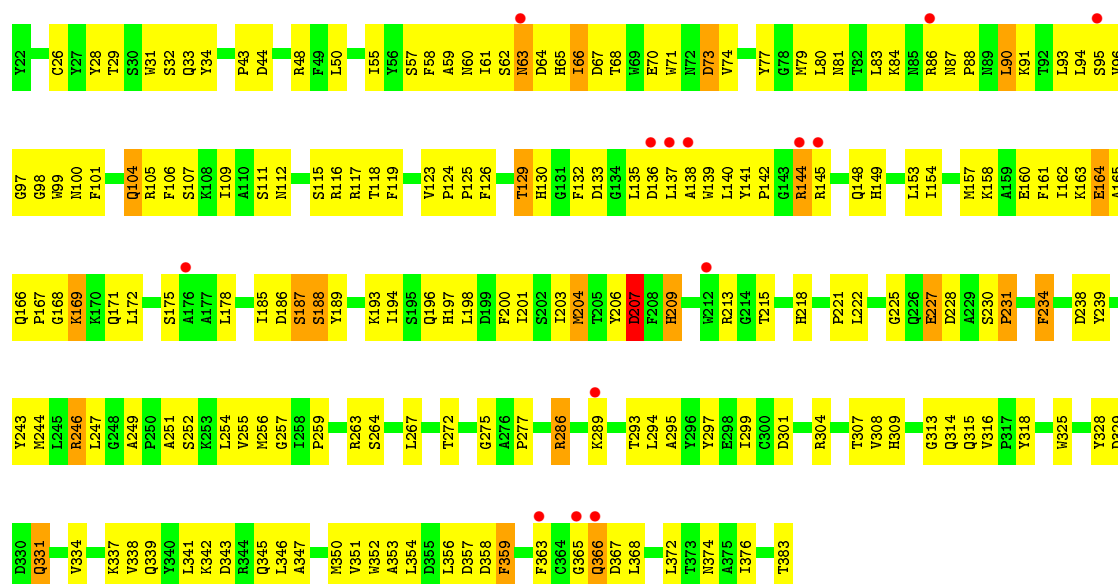


• Molecule 1: CHITINASE-3 LIKE PROTEIN 1

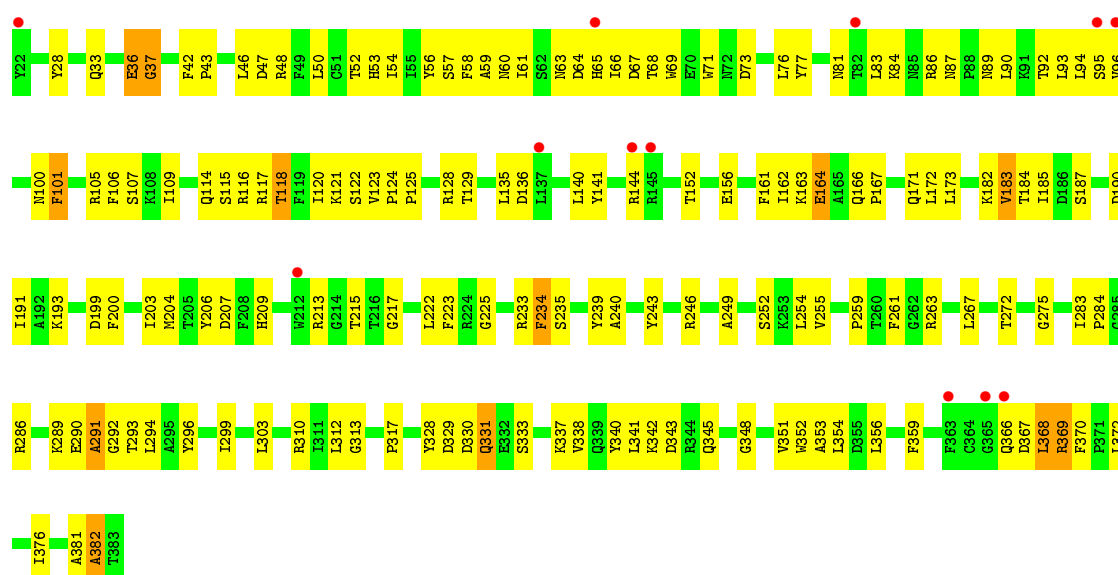


• Molecule 1: CHITINASE-3 LIKE PROTEIN 1





• Molecule 1: CHITINASE-3 LIKE PROTEIN 1



• Molecule 2: 2-acetamido-2-deoxy-beta-D-glucopyranose-(1-4)-2-acetamido-2-deoxy-beta-D-glucopyranose-(1-4)-2-acetamido-2-deoxy-beta-D-glucopyranose



• Molecule 2: 2-acetamido-2-deoxy-beta-D-glucopyranose-(1-4)-2-acetamido-2-deoxy-beta-D-glucopyranose-(1-4)-2-acetamido-2-deoxy-beta-D-glucopyranose

Chain G:  100%



- Molecule 2: 2-acetamido-2-deoxy-beta-D-glucopyranose-(1-4)-2-acetamido-2-deoxy-beta-D-glucopyranose-(1-4)-2-acetamido-2-deoxy-beta-D-glucopyranose

Chain I:  67% 33%



- Molecule 2: 2-acetamido-2-deoxy-beta-D-glucopyranose-(1-4)-2-acetamido-2-deoxy-beta-D-glucopyranose-(1-4)-2-acetamido-2-deoxy-beta-D-glucopyranose

Chain K:  33% 67%




- Molecule 3: 2-acetamido-2-deoxy-beta-D-glucopyranose-(1-4)-2-acetamido-2-deoxy-beta-D-glucopyranose-(1-4)-2-acetamido-2-deoxy-beta-D-glucopyranose-(1-4)-2-acetamido-2-deoxy-beta-D-glucopyranose

Chain F:  50% 50%



- Molecule 3: 2-acetamido-2-deoxy-beta-D-glucopyranose-(1-4)-2-acetamido-2-deoxy-beta-D-glucopyranose-(1-4)-2-acetamido-2-deoxy-beta-D-glucopyranose-(1-4)-2-acetamido-2-deoxy-beta-D-glucopyranose

Chain H:  25% 25% 50%



- Molecule 3: 2-acetamido-2-deoxy-beta-D-glucopyranose-(1-4)-2-acetamido-2-deoxy-beta-D-glucopyranose-(1-4)-2-acetamido-2-deoxy-beta-D-glucopyranose-(1-4)-2-acetamido-2-deoxy-beta-D-glucopyranose

Chain J:  25% 75%



- Molecule 3: 2-acetamido-2-deoxy-beta-D-glucopyranose-(1-4)-2-acetamido-2-deoxy-beta-D-glucopyranose-(1-4)-2-acetamido-2-deoxy-beta-D-glucopyranose-(1-4)-2-acetamido-2-deoxy-beta-D-glucopyranose

Chain L:



4 Data and refinement statistics

Property	Value	Source
Space group	P 21 21 21	Depositor
Cell constants a, b, c, α , β , γ	108.64Å 123.32Å 135.49Å 90.00° 90.00° 90.00°	Depositor
Resolution (Å)	24.79 – 2.75 24.79 – 2.73	Depositor EDS
% Data completeness (in resolution range)	99.0 (24.79-2.75) 98.3 (24.79-2.73)	Depositor EDS
R_{merge}	0.08	Depositor
R_{sym}	(Not available)	Depositor
$\langle I/\sigma(I) \rangle$ ¹	2.94 (at 2.72Å)	Xtrriage
Refinement program	CNS 1.0	Depositor
R, R_{free}	0.212 , 0.253 0.227 , 0.253	Depositor DCC
R_{free} test set	983 reflections (2.05%)	wwPDB-VP
Wilson B-factor (Å ²)	55.6	Xtrriage
Anisotropy	0.500	Xtrriage
Bulk solvent k_{sol} (e/Å ³), B_{sol} (Å ²)	0.26 , 39.5	EDS
L-test for twinning ²	$\langle L \rangle = 0.46$, $\langle L^2 \rangle = 0.29$	Xtrriage
Estimated twinning fraction	No twinning to report.	Xtrriage
F_o, F_c correlation	0.95	EDS
Total number of atoms	12296	wwPDB-VP
Average B, all atoms (Å ²)	60.0	wwPDB-VP

Xtrriage's analysis on translational NCS is as follows: *The analyses of the Patterson function reveals a significant off-origin peak that is 65.69 % of the origin peak, indicating pseudo-translational symmetry. The chance of finding a peak of this or larger height randomly in a structure without pseudo-translational symmetry is equal to 6.8110e-06. The detected translational NCS is most likely also responsible for the elevated intensity ratio.*

¹Intensities estimated from amplitudes.

²Theoretical values of $\langle |L| \rangle$, $\langle L^2 \rangle$ for acentric reflections are 0.5, 0.333 respectively for untwinned datasets, and 0.375, 0.2 for perfectly twinned datasets.

5 Model quality [i](#)

5.1 Standard geometry [i](#)

Bond lengths and bond angles in the following residue types are not validated in this section: NAG, SO4

The Z score for a bond length (or angle) is the number of standard deviations the observed value is removed from the expected value. A bond length (or angle) with $|Z| > 5$ is considered an outlier worth inspection. RMSZ is the root-mean-square of all Z scores of the bond lengths (or angles).

Mol	Chain	Bond lengths		Bond angles	
		RMSZ	# Z >5	RMSZ	# Z >5
1	A	0.47	0/2955	0.71	0/4002
1	B	0.48	0/2948	0.73	0/3992
1	C	0.42	0/2957	0.67	0/4004
1	D	0.45	0/2946	0.68	0/3990
All	All	0.46	0/11806	0.70	0/15988

There are no bond length outliers.

There are no bond angle outliers.

There are no chirality outliers.

There are no planarity outliers.

5.2 Too-close contacts [i](#)

In the following table, the Non-H and H(model) columns list the number of non-hydrogen atoms and hydrogen atoms in the chain respectively. The H(added) column lists the number of hydrogen atoms added and optimized by MolProbity. The Clashes column lists the number of clashes within the asymmetric unit, whereas Symm-Clashes lists symmetry related clashes.

Mol	Chain	Non-H	H(model)	H(added)	Clashes	Symm-Clashes
1	A	2871	0	2789	122	0
1	B	2868	0	2790	107	0
1	C	2873	0	2791	188	0
1	D	2866	0	2785	139	0
2	E	43	0	39	3	0
2	G	43	0	39	0	0
2	I	43	0	39	4	0
2	K	43	0	39	1	0
3	F	57	0	51	11	0

Continued on next page...

Continued from previous page...

Mol	Chain	Non-H	H(model)	H(added)	Clashes	Symm-Clashes
3	H	57	0	51	7	0
3	J	57	0	51	14	0
3	L	57	0	51	13	0
4	A	14	0	13	0	0
4	B	14	0	13	0	0
4	C	14	0	13	1	0
4	D	14	0	13	0	0
5	A	15	0	0	0	0
5	B	15	0	0	0	0
5	C	15	0	0	0	0
5	D	15	0	0	0	0
6	A	101	0	0	24	0
6	B	80	0	0	12	0
6	C	53	0	0	2	0
6	D	68	0	0	9	0
All	All	12296	0	11567	566	0

The all-atom clashscore is defined as the number of clashes found per 1000 atoms (including hydrogen atoms). The all-atom clashscore for this structure is 24.

The worst 5 of 566 close contacts within the same asymmetric unit are listed below, sorted by their clash magnitude.

Atom-1	Atom-2	Interatomic distance (Å)	Clash overlap (Å)
1:D:162:ILE:HG12	1:D:171:GLN:HE22	1.31	0.95
1:A:145:ARG:HG3	6:A:2041:HOH:O	1.64	0.94
1:C:193:LYS:O	1:C:196:GLN:HG2	1.69	0.93
1:C:144:ARG:HH11	1:C:144:ARG:HB2	1.34	0.92
1:D:352:TRP:HB3	6:D:2061:HOH:O	1.69	0.91

There are no symmetry-related clashes.

5.3 Torsion angles [i](#)

5.3.1 Protein backbone [i](#)

In the following table, the Percentiles column shows the percent Ramachandran outliers of the chain as a percentile score with respect to all X-ray entries followed by that with respect to entries of similar resolution.

The Analysed column shows the number of residues for which the backbone conformation was analysed, and the total number of residues.

Mol	Chain	Analysed	Favoured	Allowed	Outliers	Percentiles	
1	A	362/362 (100%)	329 (91%)	29 (8%)	4 (1%)	14	25
1	B	361/362 (100%)	336 (93%)	24 (7%)	1 (0%)	41	60
1	C	362/362 (100%)	309 (85%)	44 (12%)	9 (2%)	5	9
1	D	361/362 (100%)	304 (84%)	47 (13%)	10 (3%)	5	7
All	All	1446/1448 (100%)	1278 (88%)	144 (10%)	24 (2%)	9	16

5 of 24 Ramachandran outliers are listed below:

Mol	Chain	Res	Type
1	A	362	SER
1	A	363	PHE
1	C	66	ILE
1	C	68	THR
1	C	188	SER

5.3.2 Protein sidechains ⓘ

In the following table, the Percentiles column shows the percent sidechain outliers of the chain as a percentile score with respect to all X-ray entries followed by that with respect to entries of similar resolution.

The Analysed column shows the number of residues for which the sidechain conformation was analysed, and the total number of residues.

Mol	Chain	Analysed	Rotameric	Outliers	Percentiles	
1	A	304/302 (101%)	288 (95%)	16 (5%)	22	38
1	B	303/302 (100%)	287 (95%)	16 (5%)	22	38
1	C	304/302 (101%)	280 (92%)	24 (8%)	12	22
1	D	303/302 (100%)	290 (96%)	13 (4%)	29	48
All	All	1214/1208 (100%)	1145 (94%)	69 (6%)	21	36

5 of 69 residues with a non-rotameric sidechain are listed below:

Mol	Chain	Res	Type
1	B	368	LEU
1	C	144	ARG
1	D	234	PHE
1	C	67	ASP
1	C	104	GLN

Some sidechains can be flipped to improve hydrogen bonding and reduce clashes. 5 of 34 such sidechains are listed below:

Mol	Chain	Res	Type
1	C	89	ASN
1	C	149	HIS
1	D	197	HIS
1	C	104	GLN
1	A	331	GLN

5.3.3 RNA ⓘ

There are no RNA molecules in this entry.

5.4 Non-standard residues in protein, DNA, RNA chains ⓘ

There are no non-standard protein/DNA/RNA residues in this entry.

5.5 Carbohydrates ⓘ

28 monosaccharides are modelled in this entry.

In the following table, the Counts columns list the number of bonds (or angles) for which Mogul statistics could be retrieved, the number of bonds (or angles) that are observed in the model and the number of bonds (or angles) that are defined in the Chemical Component Dictionary. The Link column lists molecule types, if any, to which the group is linked. The Z score for a bond length (or angle) is the number of standard deviations the observed value is removed from the expected value. A bond length (or angle) with $|Z| > 2$ is considered an outlier worth inspection. RMSZ is the root-mean-square of all Z scores of the bond lengths (or angles).

Mol	Type	Chain	Res	Link	Bond lengths			Bond angles		
					Counts	RMSZ	$\# Z > 2$	Counts	RMSZ	$\# Z > 2$
2	NAG	E	1	2	15,15,15	0.53	0	21,21,21	0.86	0
2	NAG	E	2	2	14,14,15	0.57	0	17,19,21	0.71	1 (5%)
2	NAG	E	3	2	14,14,15	0.58	0	17,19,21	0.60	0
3	NAG	F	1	3	15,15,15	0.65	0	21,21,21	0.92	1 (4%)
3	NAG	F	2	3	14,14,15	0.68	0	17,19,21	0.81	1 (5%)
3	NAG	F	3	3	14,14,15	0.77	0	17,19,21	0.78	0
3	NAG	F	4	3	14,14,15	0.62	0	17,19,21	0.70	0
2	NAG	G	1	2	15,15,15	0.51	0	21,21,21	0.67	0
2	NAG	G	2	2	14,14,15	0.72	0	17,19,21	0.77	0
2	NAG	G	3	2	14,14,15	0.67	0	17,19,21	0.65	0
3	NAG	H	1	3	15,15,15	0.49	0	21,21,21	0.62	0

Mol	Type	Chain	Res	Link	Bond lengths			Bond angles		
					Counts	RMSZ	# Z > 2	Counts	RMSZ	# Z > 2
3	NAG	H	2	3	14,14,15	0.57	0	17,19,21	0.84	1 (5%)
3	NAG	H	3	3	14,14,15	0.89	0	17,19,21	0.94	2 (11%)
3	NAG	H	4	3	14,14,15	0.55	0	17,19,21	0.64	0
2	NAG	I	1	2	15,15,15	0.59	0	21,21,21	0.60	0
2	NAG	I	2	2	14,14,15	0.69	0	17,19,21	0.77	1 (5%)
2	NAG	I	3	2	14,14,15	0.61	0	17,19,21	0.64	0
3	NAG	J	1	3	15,15,15	0.57	0	21,21,21	0.94	1 (4%)
3	NAG	J	2	3	14,14,15	0.76	0	17,19,21	0.86	1 (5%)
3	NAG	J	3	3	14,14,15	0.76	0	17,19,21	1.05	1 (5%)
3	NAG	J	4	3	14,14,15	0.65	0	17,19,21	0.84	1 (5%)
2	NAG	K	1	2	15,15,15	0.68	0	21,21,21	0.94	1 (4%)
2	NAG	K	2	2	14,14,15	0.65	0	17,19,21	0.68	0
2	NAG	K	3	2	14,14,15	0.63	0	17,19,21	0.66	0
3	NAG	L	1	3	15,15,15	0.59	0	21,21,21	0.72	0
3	NAG	L	2	3	14,14,15	0.58	0	17,19,21	0.75	1 (5%)
3	NAG	L	3	3	14,14,15	0.85	0	17,19,21	1.02	2 (11%)
3	NAG	L	4	3	14,14,15	0.65	0	17,19,21	0.58	0

In the following table, the Chirals column lists the number of chiral outliers, the number of chiral centers analysed, the number of these observed in the model and the number defined in the Chemical Component Dictionary. Similar counts are reported in the Torsion and Rings columns. '-' means no outliers of that kind were identified.

Mol	Type	Chain	Res	Link	Chirals	Torsions	Rings
2	NAG	E	1	2	-	4/6/26/26	0/1/1/1
2	NAG	E	2	2	-	2/6/23/26	0/1/1/1
2	NAG	E	3	2	-	3/6/23/26	0/1/1/1
3	NAG	F	1	3	-	2/6/26/26	0/1/1/1
3	NAG	F	2	3	-	2/6/23/26	0/1/1/1
3	NAG	F	3	3	-	2/6/23/26	0/1/1/1
3	NAG	F	4	3	-	0/6/23/26	0/1/1/1
2	NAG	G	1	2	-	5/6/26/26	0/1/1/1
2	NAG	G	2	2	-	2/6/23/26	0/1/1/1
2	NAG	G	3	2	-	3/6/23/26	0/1/1/1
3	NAG	H	1	3	-	1/6/26/26	0/1/1/1
3	NAG	H	2	3	-	2/6/23/26	0/1/1/1
3	NAG	H	3	3	-	2/6/23/26	0/1/1/1
3	NAG	H	4	3	-	2/6/23/26	0/1/1/1

Continued on next page...

Continued from previous page...

Mol	Type	Chain	Res	Link	Chirals	Torsions	Rings
2	NAG	I	1	2	-	6/6/26/26	0/1/1/1
2	NAG	I	2	2	-	2/6/23/26	0/1/1/1
2	NAG	I	3	2	-	3/6/23/26	0/1/1/1
3	NAG	J	1	3	-	4/6/26/26	0/1/1/1
3	NAG	J	2	3	-	2/6/23/26	0/1/1/1
3	NAG	J	3	3	-	2/6/23/26	0/1/1/1
3	NAG	J	4	3	-	4/6/23/26	0/1/1/1
2	NAG	K	1	2	-	4/6/26/26	0/1/1/1
2	NAG	K	2	2	-	4/6/23/26	0/1/1/1
2	NAG	K	3	2	-	3/6/23/26	0/1/1/1
3	NAG	L	1	3	-	4/6/26/26	0/1/1/1
3	NAG	L	2	3	-	4/6/23/26	0/1/1/1
3	NAG	L	3	3	-	0/6/23/26	0/1/1/1
3	NAG	L	4	3	-	0/6/23/26	0/1/1/1

There are no bond length outliers.

The worst 5 of 15 bond angle outliers are listed below:

Mol	Chain	Res	Type	Atoms	Z	Observed(°)	Ideal(°)
3	J	3	NAG	C1-O5-C5	2.73	115.89	112.19
2	K	1	NAG	C1-C2-C3	-2.57	107.04	110.54
3	F	2	NAG	C2-N2-C7	-2.57	119.25	122.90
3	H	3	NAG	C2-N2-C7	-2.45	119.42	122.90
3	J	4	NAG	C2-N2-C7	-2.44	119.42	122.90

There are no chirality outliers.

5 of 74 torsion outliers are listed below:

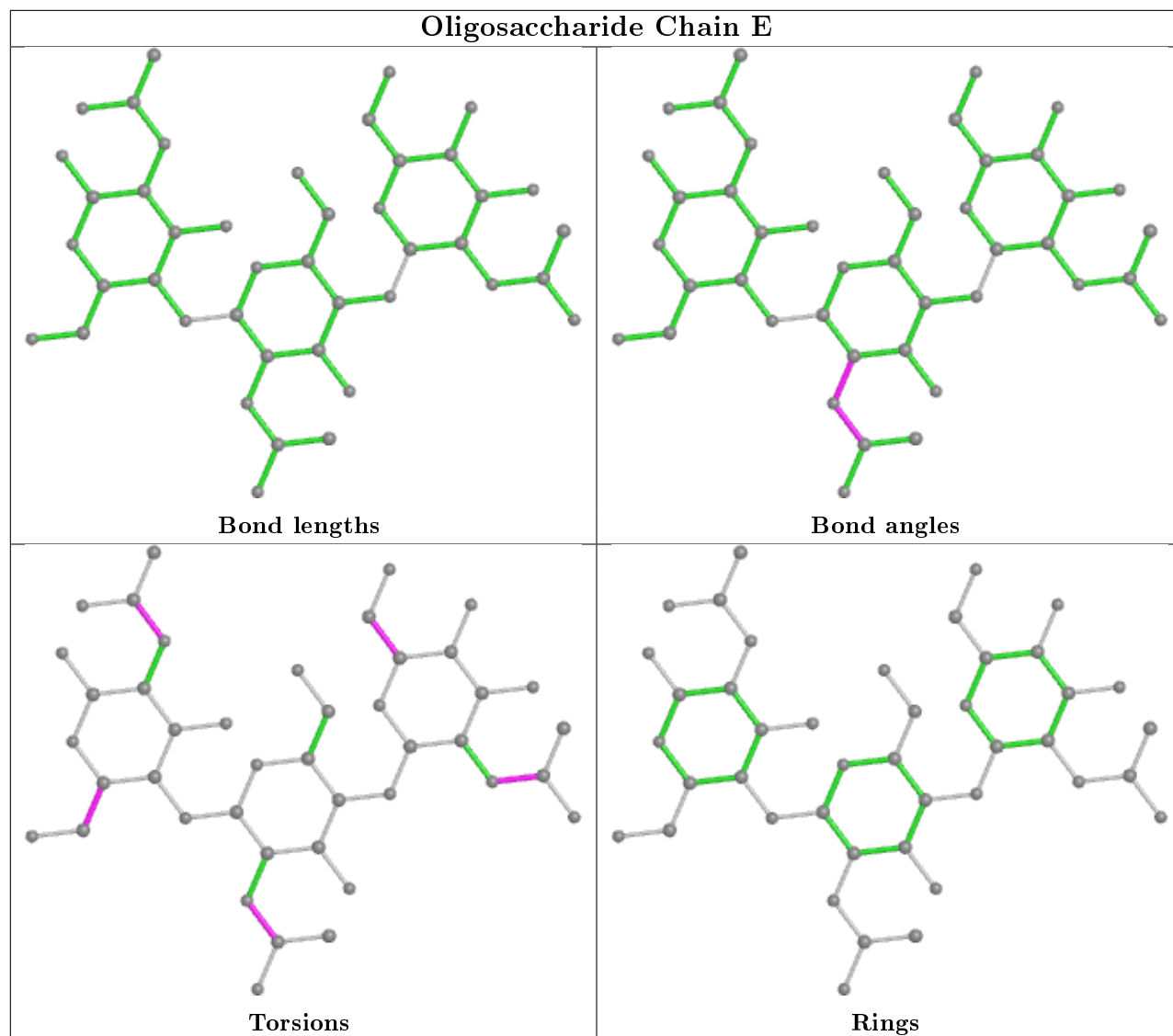
Mol	Chain	Res	Type	Atoms
2	K	3	NAG	C8-C7-N2-C2
2	K	3	NAG	O7-C7-N2-C2
2	I	1	NAG	C1-C2-N2-C7
2	I	1	NAG	C8-C7-N2-C2
2	I	1	NAG	O7-C7-N2-C2

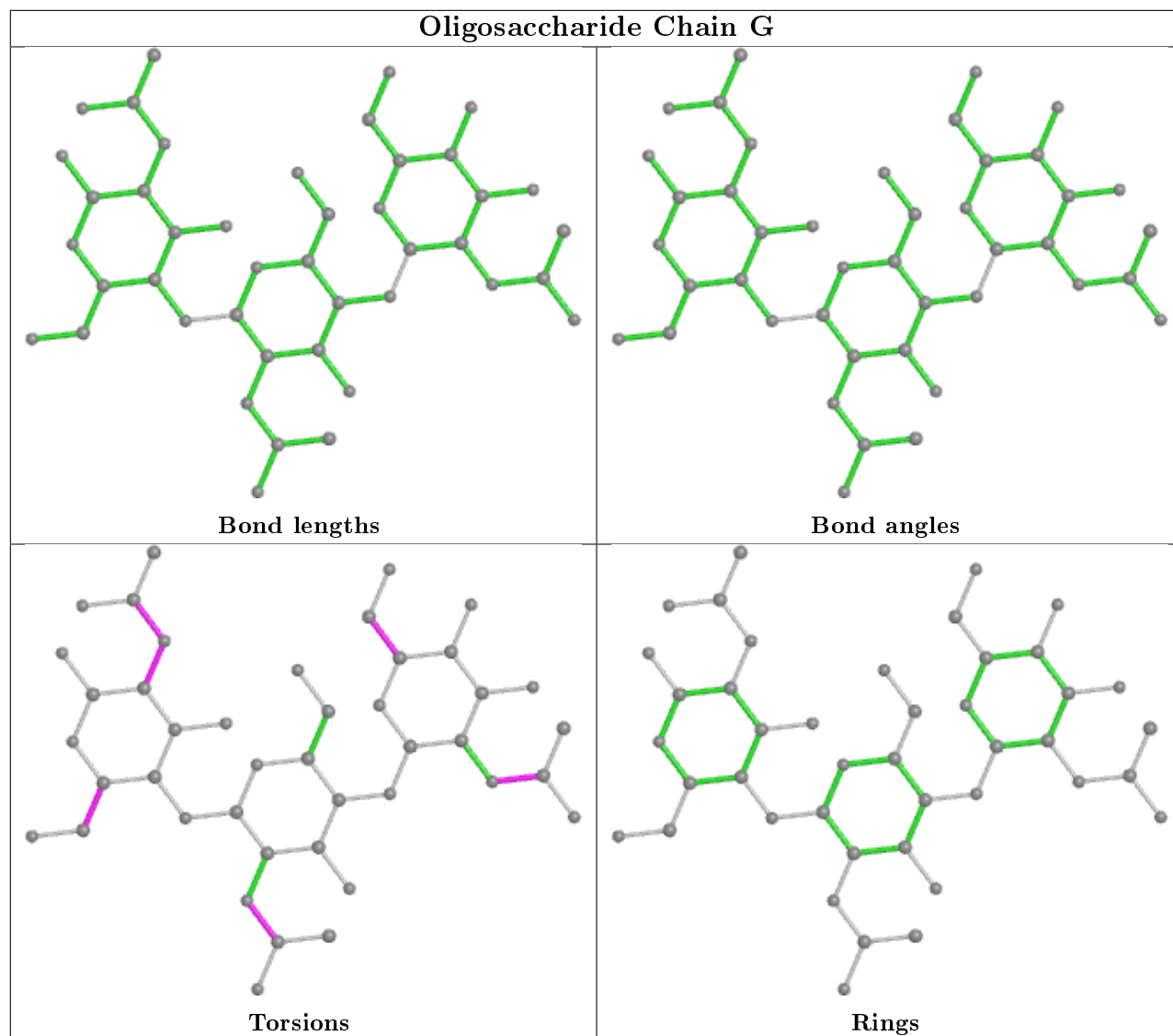
There are no ring outliers.

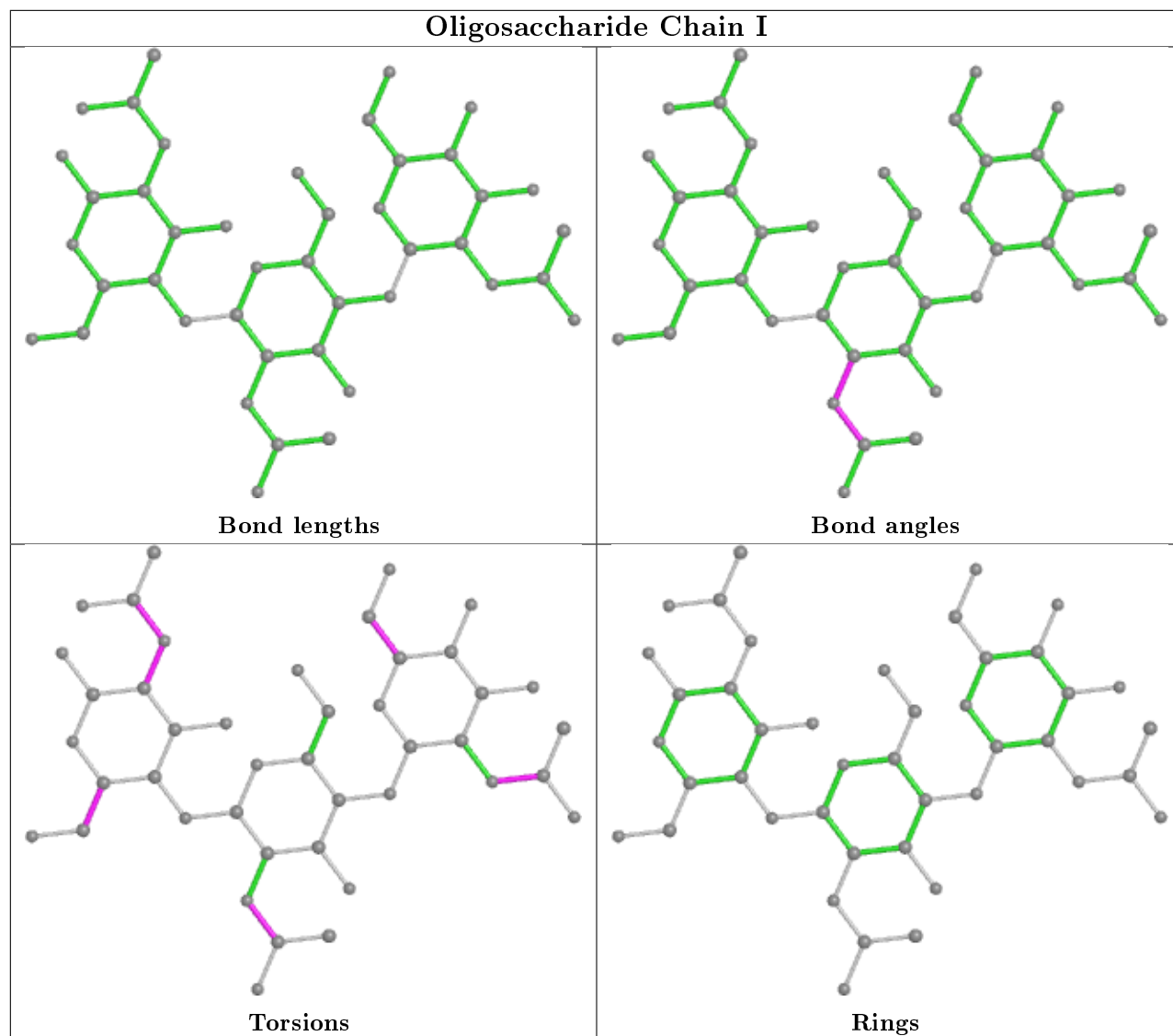
19 monomers are involved in 53 short contacts:

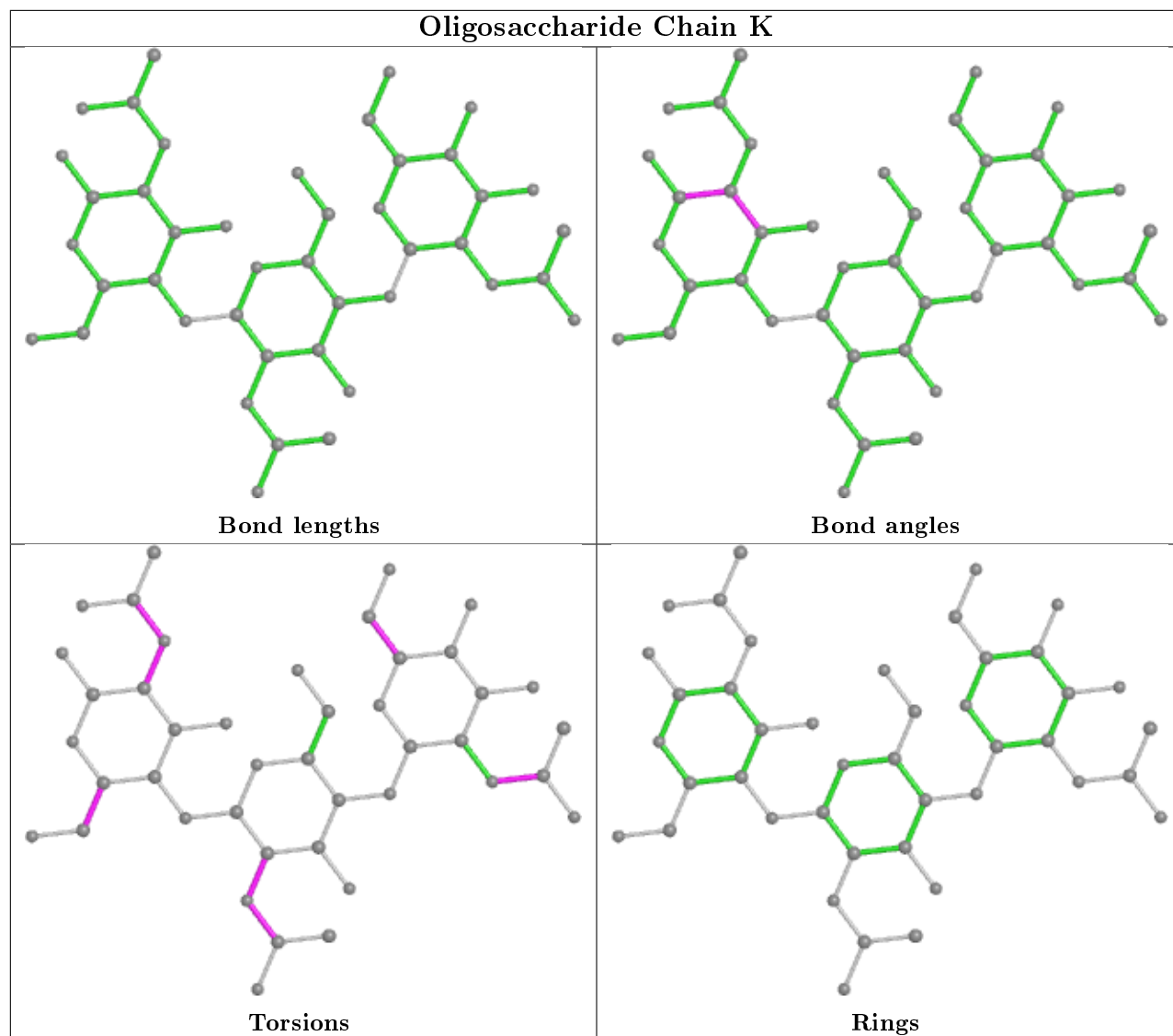
Mol	Chain	Res	Type	Clashes	Symm-Clashes
3	L	4	NAG	2	0
3	J	4	NAG	4	0
3	J	3	NAG	10	0
2	I	1	NAG	1	0
3	F	2	NAG	4	0
3	F	3	NAG	5	0
3	H	3	NAG	3	0
2	E	2	NAG	3	0
2	I	2	NAG	3	0
2	K	2	NAG	1	0
2	E	3	NAG	3	0
3	H	2	NAG	2	0
3	J	2	NAG	3	0
3	L	3	NAG	10	0
3	H	4	NAG	2	0
3	F	1	NAG	1	0
2	I	3	NAG	2	0
3	L	2	NAG	2	0
3	F	4	NAG	2	0

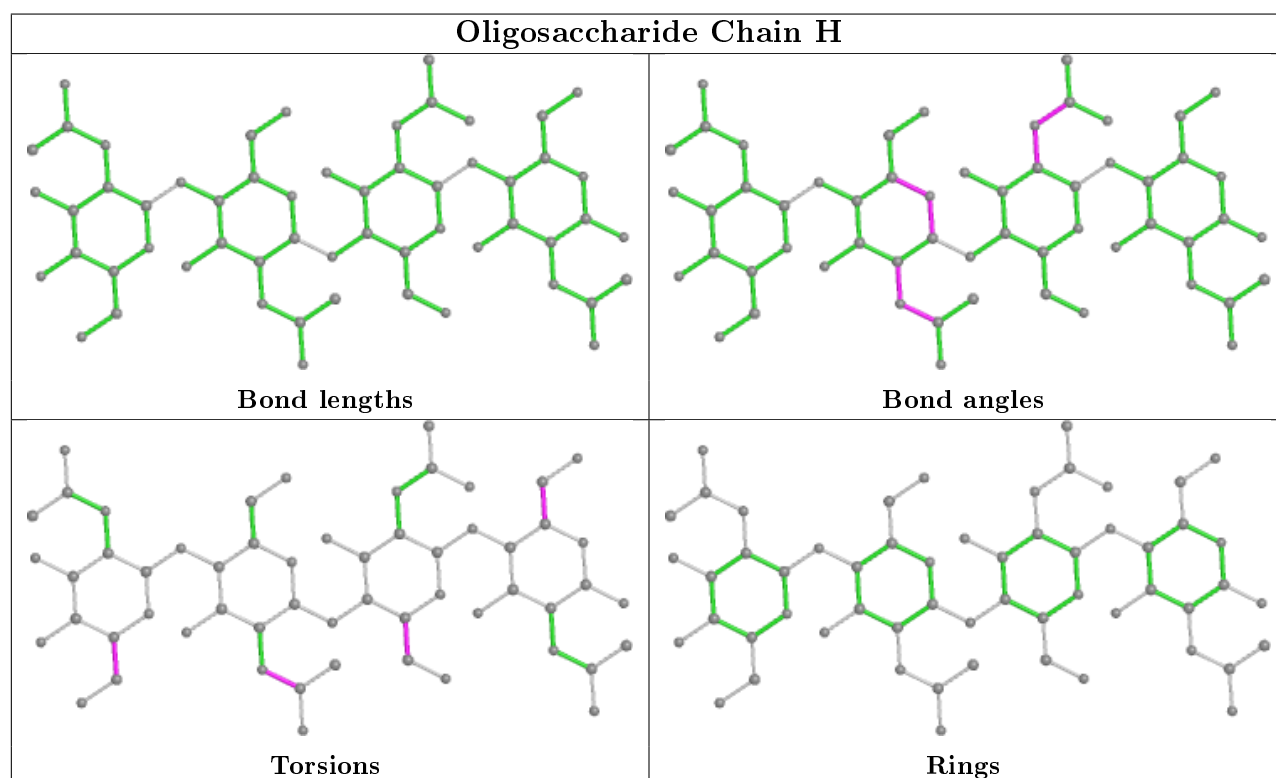
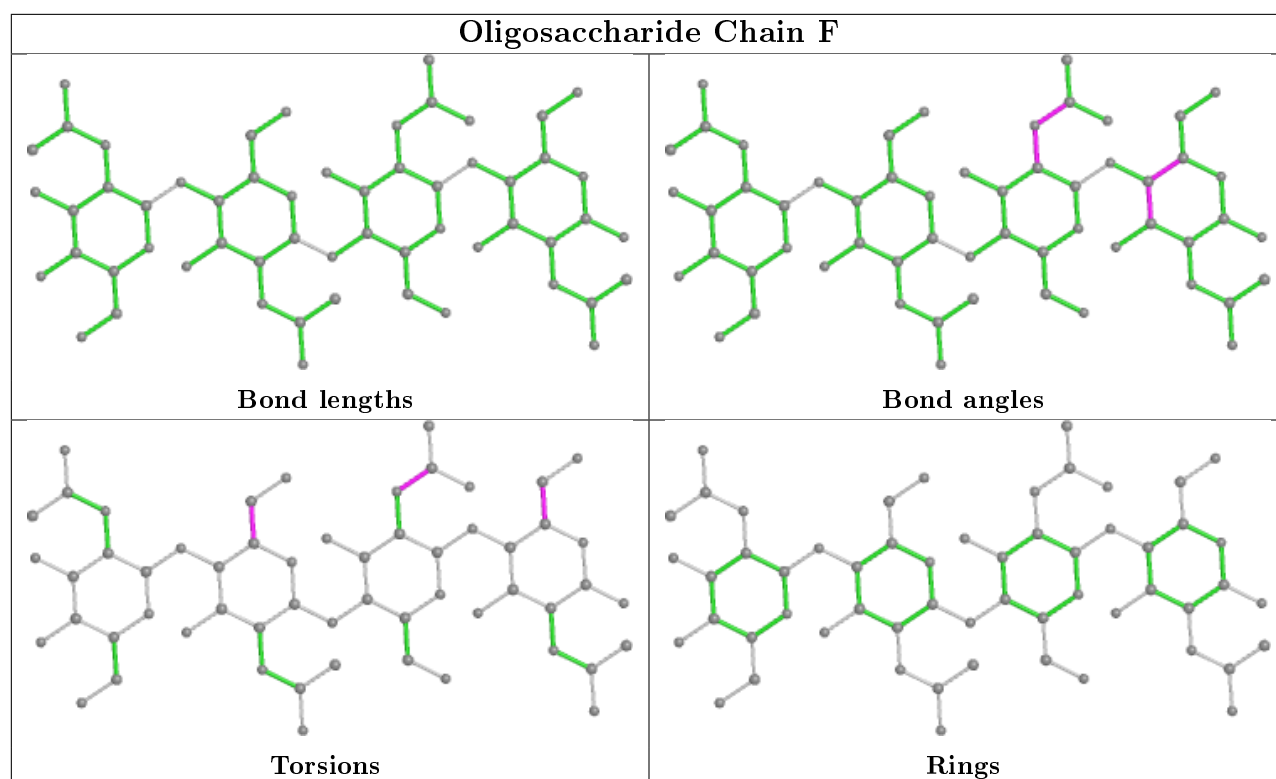
The following is a two-dimensional graphical depiction of Mogul quality analysis of bond lengths, bond angles, torsion angles, and ring geometry for oligosaccharide.

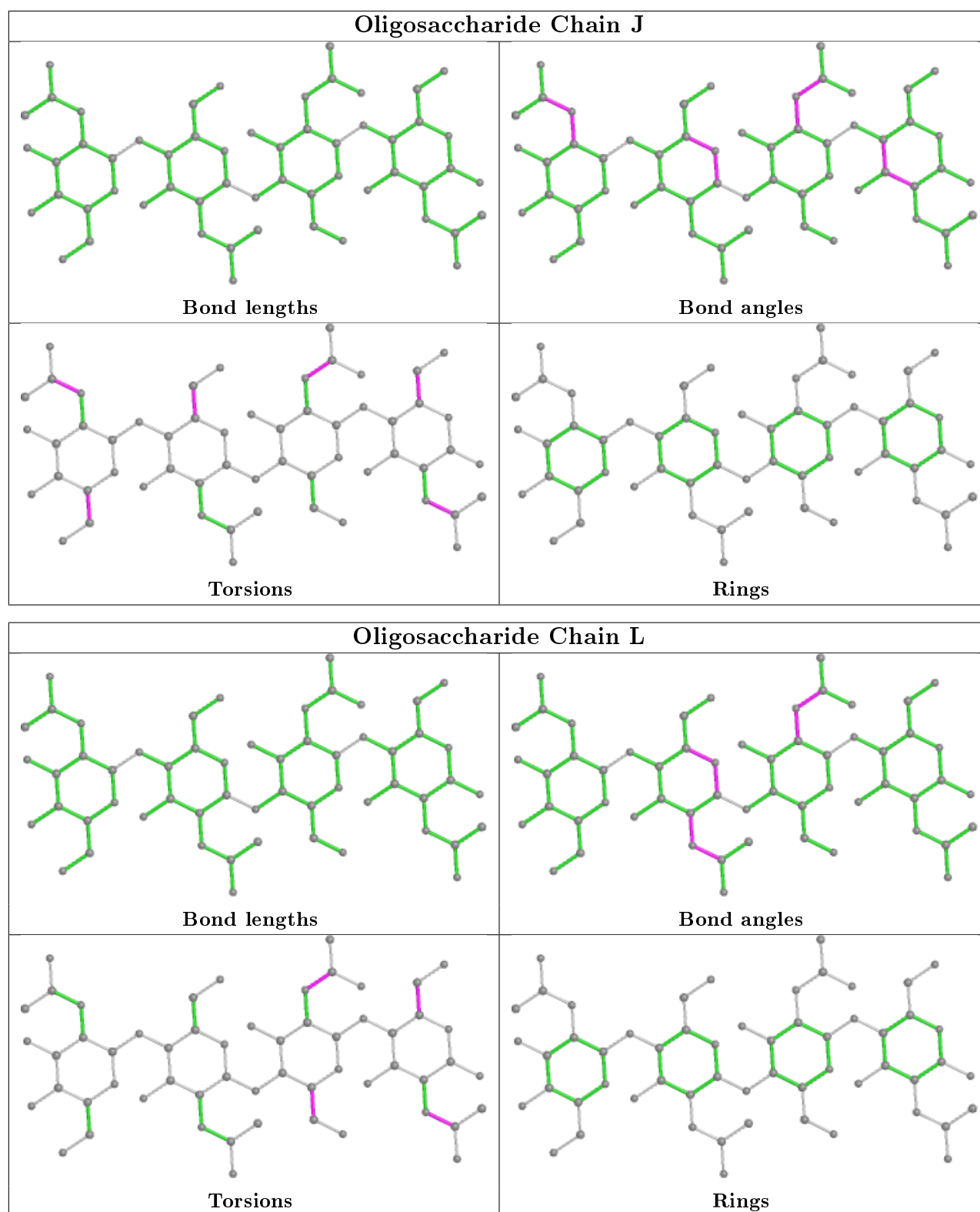












5.6 Ligand geometry [i](#)

16 ligands are modelled in this entry.

In the following table, the Counts columns list the number of bonds (or angles) for which Mogul

statistics could be retrieved, the number of bonds (or angles) that are observed in the model and the number of bonds (or angles) that are defined in the Chemical Component Dictionary. The Link column lists molecule types, if any, to which the group is linked. The Z score for a bond length (or angle) is the number of standard deviations the observed value is removed from the expected value. A bond length (or angle) with $|Z| > 2$ is considered an outlier worth inspection. RMSZ is the root-mean-square of all Z scores of the bond lengths (or angles).

Mol	Type	Chain	Res	Link	Bond lengths			Bond angles		
					Counts	RMSZ	$\# Z > 2$	Counts	RMSZ	$\# Z > 2$
4	NAG	A	1384	1	14,14,15	0.72	0	17,19,21	1.08	1 (5%)
5	SO4	C	1386	-	4,4,4	0.24	0	6,6,6	0.08	0
5	SO4	A	1385	-	4,4,4	0.25	0	6,6,6	0.16	0
5	SO4	B	1387	-	4,4,4	0.31	0	6,6,6	0.15	0
5	SO4	A	1387	-	4,4,4	0.31	0	6,6,6	0.10	0
5	SO4	D	1387	-	4,4,4	0.26	0	6,6,6	0.19	0
4	NAG	D	1384	1	14,14,15	0.65	0	17,19,21	0.64	0
4	NAG	B	1384	1	14,14,15	0.77	0	17,19,21	0.78	1 (5%)
5	SO4	C	1387	-	4,4,4	0.28	0	6,6,6	0.07	0
4	NAG	C	1384	1	14,14,15	0.80	1 (7%)	17,19,21	0.68	0
5	SO4	B	1385	-	4,4,4	0.28	0	6,6,6	0.06	0
5	SO4	C	1385	-	4,4,4	0.28	0	6,6,6	0.09	0
5	SO4	B	1386	-	4,4,4	0.26	0	6,6,6	0.15	0
5	SO4	D	1385	-	4,4,4	0.26	0	6,6,6	0.20	0
5	SO4	A	1386	-	4,4,4	0.30	0	6,6,6	0.20	0
5	SO4	D	1386	-	4,4,4	0.25	0	6,6,6	0.12	0

In the following table, the Chirals column lists the number of chiral outliers, the number of chiral centers analysed, the number of these observed in the model and the number defined in the Chemical Component Dictionary. Similar counts are reported in the Torsion and Rings columns. '-' means no outliers of that kind were identified.

Mol	Type	Chain	Res	Link	Chirals	Torsions	Rings
4	NAG	A	1384	1	-	3/6/23/26	0/1/1/1
4	NAG	B	1384	1	-	4/6/23/26	0/1/1/1
4	NAG	C	1384	1	-	5/6/23/26	0/1/1/1
4	NAG	D	1384	1	-	2/6/23/26	0/1/1/1

All (1) bond length outliers are listed below:

Mol	Chain	Res	Type	Atoms	Z	Observed(Å)	Ideal(Å)
4	C	1384	NAG	C1-C2	2.23	1.55	1.52

All (2) bond angle outliers are listed below:

Mol	Chain	Res	Type	Atoms	Z	Observed(°)	Ideal(°)
4	A	1384	NAG	C2-N2-C7	-2.57	119.25	122.90
4	B	1384	NAG	C2-N2-C7	-2.00	120.05	122.90

There are no chirality outliers.

5 of 14 torsion outliers are listed below:

Mol	Chain	Res	Type	Atoms
4	D	1384	NAG	C8-C7-N2-C2
4	D	1384	NAG	O7-C7-N2-C2
4	C	1384	NAG	C3-C2-N2-C7
4	C	1384	NAG	C8-C7-N2-C2
4	C	1384	NAG	O7-C7-N2-C2

There are no ring outliers.

1 monomer is involved in 1 short contact:

Mol	Chain	Res	Type	Clashes	Symm-Clashes
4	C	1384	NAG	1	0

5.7 Other polymers [i](#)

There are no such residues in this entry.

5.8 Polymer linkage issues [i](#)

There are no chain breaks in this entry.

6 Fit of model and data [i](#)

6.1 Protein, DNA and RNA chains [i](#)

In the following table, the column labelled ‘#RSRZ> 2’ contains the number (and percentage) of RSRZ outliers, followed by percent RSRZ outliers for the chain as percentile scores relative to all X-ray entries and entries of similar resolution. The OWAB column contains the minimum, median, 95th percentile and maximum values of the occupancy-weighted average B-factor per residue. The column labelled ‘Q< 0.9’ lists the number of (and percentage) of residues with an average occupancy less than 0.9.

Mol	Chain	Analysed	<RSRZ>	#RSRZ>2	OWAB(Å ²)	Q<0.9
1	A	362/362 (100%)	-0.41	3 (0%) 86 90	28, 49, 75, 102	0
1	B	362/362 (100%)	-0.41	6 (1%) 70 78	32, 48, 73, 92	0
1	C	362/362 (100%)	-0.06	14 (3%) 39 46	33, 71, 106, 117	0
1	D	362/362 (100%)	-0.18	12 (3%) 46 54	31, 61, 91, 108	0
All	All	1448/1448 (100%)	-0.27	35 (2%) 59 68	28, 55, 95, 117	0

The worst 5 of 35 RSRZ outliers are listed below:

Mol	Chain	Res	Type	RSRZ
1	D	145	ARG	5.1
1	B	363	PHE	4.6
1	D	366	GLN	4.4
1	C	363	PHE	4.2
1	D	212	TRP	3.9

6.2 Non-standard residues in protein, DNA, RNA chains [i](#)

There are no non-standard protein/DNA/RNA residues in this entry.

6.3 Carbohydrates [i](#)

In the following table, the Atoms column lists the number of modelled atoms in the group and the number defined in the chemical component dictionary. The B-factors column lists the minimum, median, 95th percentile and maximum values of B factors of atoms in the group. The column labelled ‘Q< 0.9’ lists the number of atoms with occupancy less than 0.9.

Mol	Type	Chain	Res	Atoms	RSCC	RSR	B-factors(Å ²)	Q<0.9
2	NAG	G	3	14/15	0.84	0.25	98,100,102,104	0
2	NAG	I	2	14/15	0.85	0.26	118,122,123,127	0

Continued on next page...

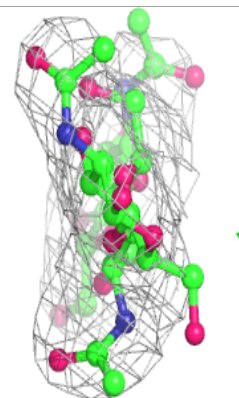
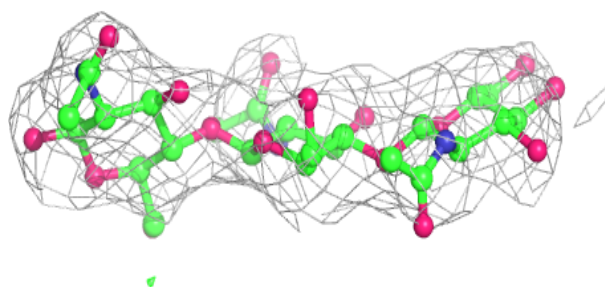
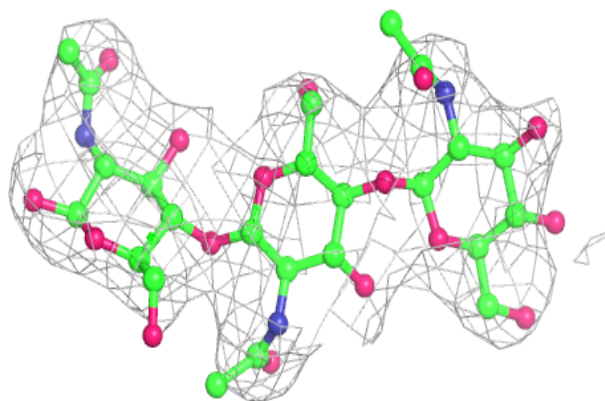
Continued from previous page...

Mol	Type	Chain	Res	Atoms	RSCC	RSR	B-factors(\AA^2)	Q<0.9
2	NAG	K	1	15/15	0.86	0.27	93,95,96,99	0
2	NAG	I	1	15/15	0.86	0.33	115,117,119,120	0
3	NAG	J	4	14/15	0.87	0.18	93,100,102,103	0
2	NAG	E	3	14/15	0.88	0.31	109,111,111,112	0
2	NAG	I	3	14/15	0.88	0.39	129,130,133,133	0
2	NAG	G	1	15/15	0.88	0.23	89,92,93,93	0
3	NAG	J	1	15/15	0.89	0.33	98,100,101,101	0
3	NAG	J	2	14/15	0.89	0.13	94,99,99,99	0
2	NAG	K	3	14/15	0.89	0.33	98,99,101,101	0
2	NAG	E	2	14/15	0.90	0.14	97,101,103,106	0
3	NAG	L	1	15/15	0.90	0.25	69,74,78,80	0
2	NAG	G	2	14/15	0.90	0.20	90,94,95,98	0
2	NAG	K	2	14/15	0.91	0.23	93,95,96,97	0
3	NAG	L	2	14/15	0.91	0.16	69,71,75,77	0
2	NAG	E	1	15/15	0.92	0.18	93,98,100,100	0
3	NAG	F	4	14/15	0.92	0.14	60,65,66,68	0
3	NAG	J	3	14/15	0.92	0.16	98,99,100,100	0
3	NAG	L	4	14/15	0.93	0.14	58,66,67,68	0
3	NAG	F	3	14/15	0.94	0.16	57,62,64,64	0
3	NAG	H	4	14/15	0.94	0.17	55,65,68,69	0
3	NAG	H	3	14/15	0.94	0.12	64,67,68,68	0
3	NAG	L	3	14/15	0.94	0.15	61,67,68,69	0
3	NAG	H	1	15/15	0.95	0.19	64,66,68,69	0
3	NAG	F	1	15/15	0.95	0.20	63,66,69,69	0
3	NAG	H	2	14/15	0.95	0.16	65,68,70,72	0
3	NAG	F	2	14/15	0.95	0.14	66,68,70,71	0

The following is a graphical depiction of the model fit to experimental electron density for oligosaccharide. Each fit is shown from different orientation to approximate a three-dimensional view.

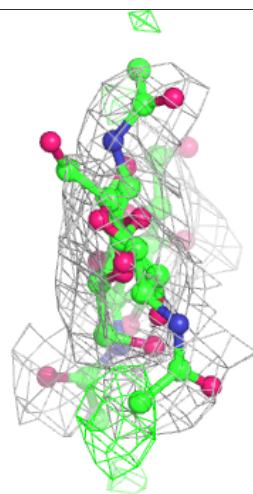
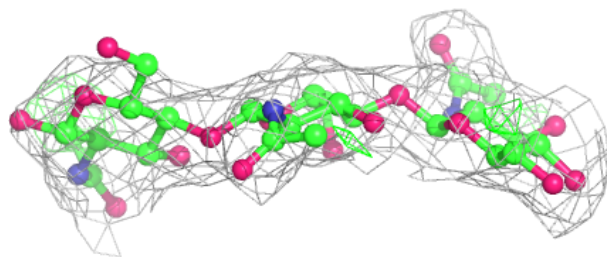
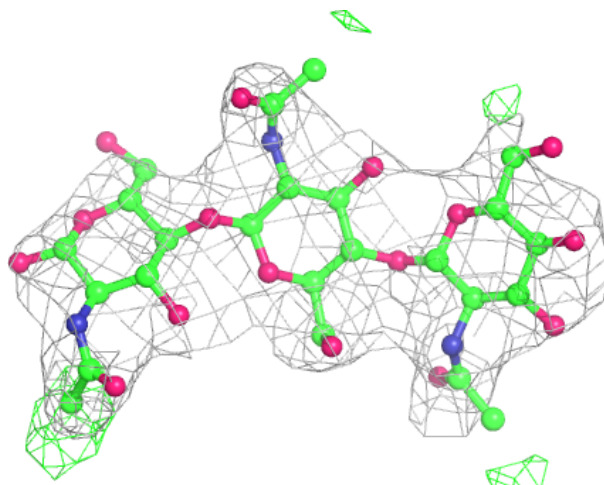
Electron density around Chain E:

$2mF_o - DF_c$ (at 0.7 rmsd) in gray
 $mF_o - DF_c$ (at 3 rmsd) in purple (negative)
and green (positive)



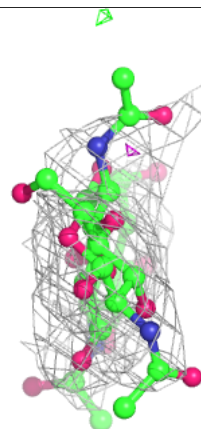
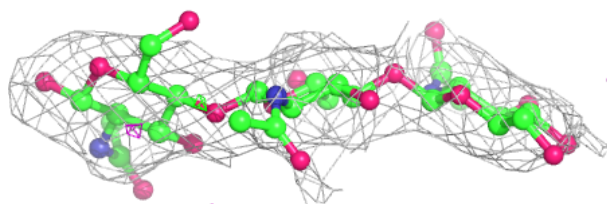
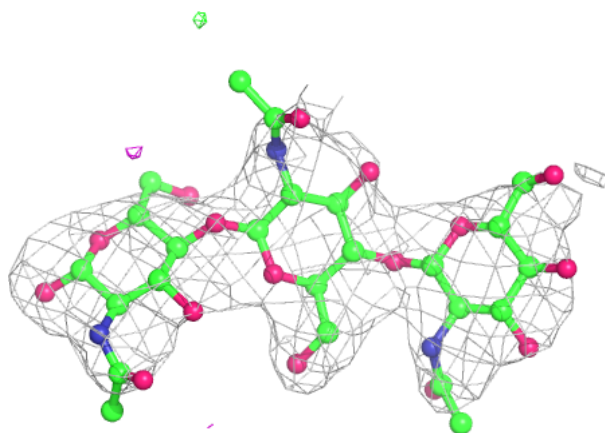
Electron density around Chain G:

$2mF_o-DF_c$ (at 0.7 rmsd) in gray
 mF_o-DF_c (at 3 rmsd) in purple (negative)
and green (positive)

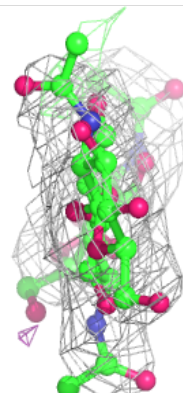
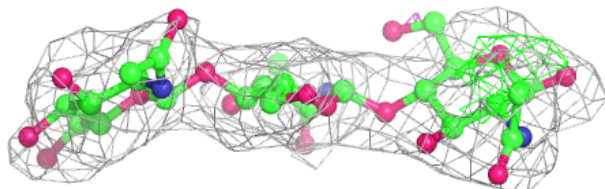
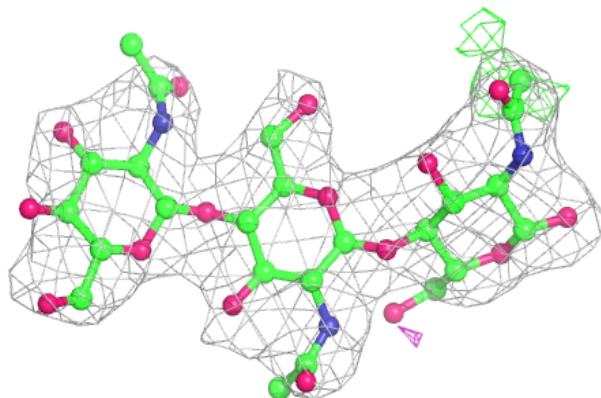


Electron density around Chain I:

$2mF_o-DF_c$ (at 0.7 rmsd) in gray
 mF_o-DF_c (at 3 rmsd) in purple (negative)
and green (positive)

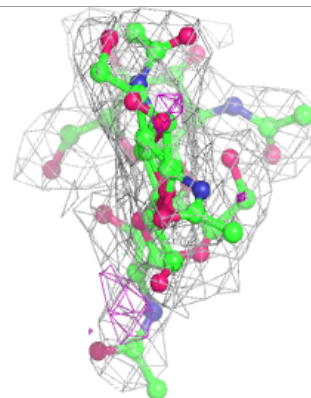
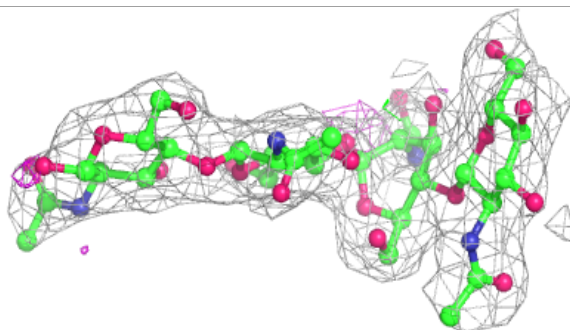
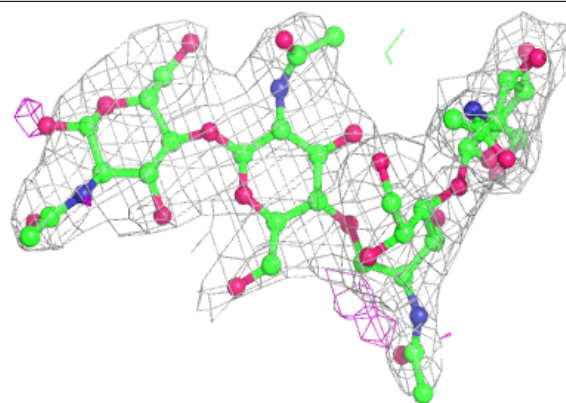
**Electron density around Chain K:**

$2mF_o-DF_c$ (at 0.7 rmsd) in gray
 mF_o-DF_c (at 3 rmsd) in purple (negative)
and green (positive)

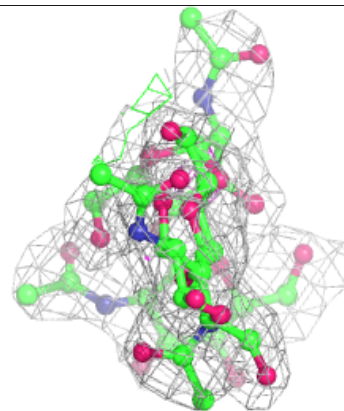
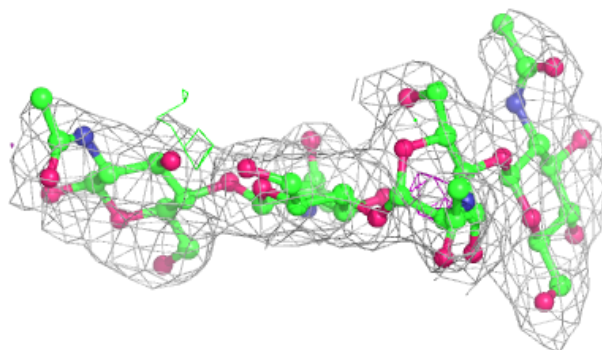
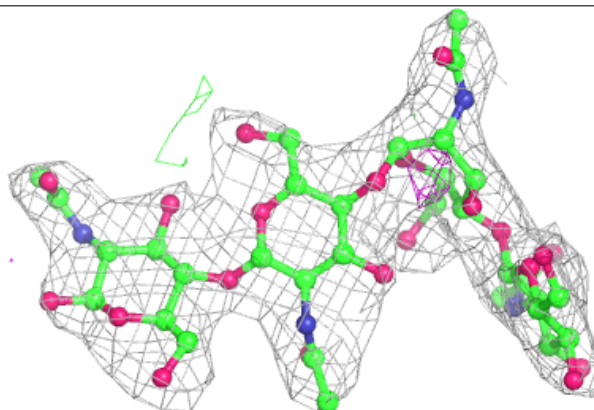


Electron density around Chain F:

$2mF_o-DF_c$ (at 0.7 rmsd) in gray
 mF_o-DF_c (at 3 rmsd) in purple (negative)
and green (positive)

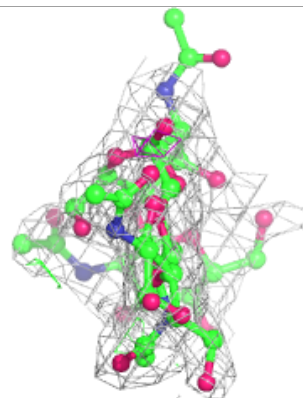
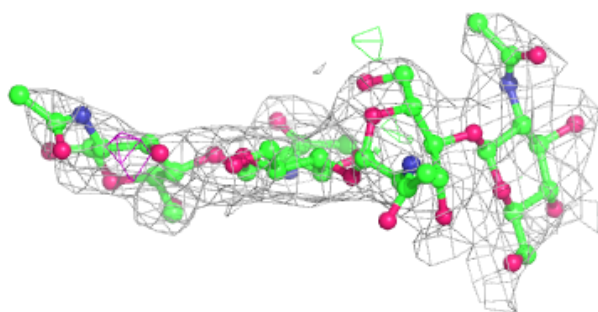
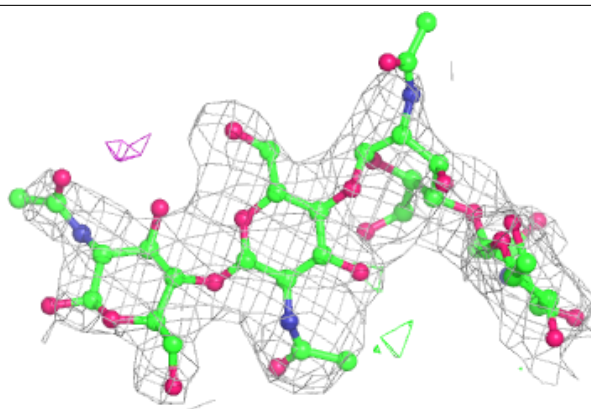
**Electron density around Chain H:**

$2mF_o-DF_c$ (at 0.7 rmsd) in gray
 mF_o-DF_c (at 3 rmsd) in purple (negative)
and green (positive)

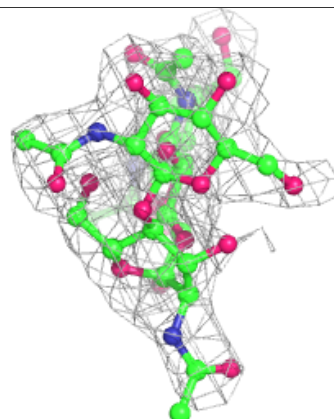
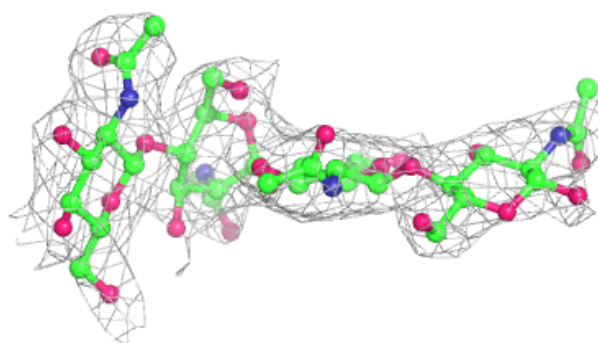
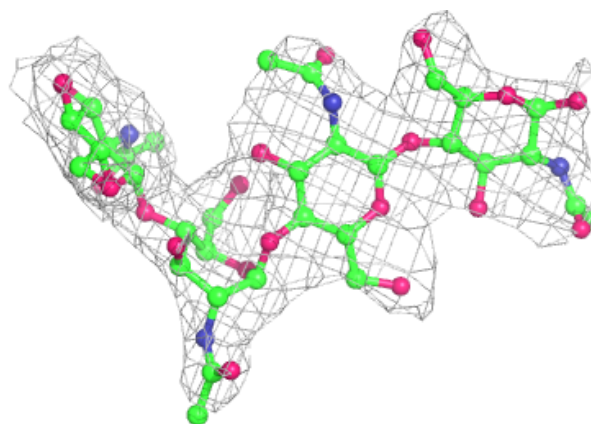


Electron density around Chain J:

$2mF_o-DF_c$ (at 0.7 rmsd) in gray
 mF_o-DF_c (at 3 rmsd) in purple (negative)
and green (positive)

**Electron density around Chain L:**

$2mF_o-DF_c$ (at 0.7 rmsd) in gray
 mF_o-DF_c (at 3 rmsd) in purple (negative)
and green (positive)



6.4 Ligands

In the following table, the Atoms column lists the number of modelled atoms in the group and the number defined in the chemical component dictionary. The B-factors column lists the minimum, median, 95th percentile and maximum values of B factors of atoms in the group. The column labelled 'Q< 0.9' lists the number of atoms with occupancy less than 0.9.

Mol	Type	Chain	Res	Atoms	RSCC	RSR	B-factors(Å ²)	Q<0.9
5	SO4	C	1387	5/5	0.83	0.24	139,140,140,140	0
5	SO4	B	1385	5/5	0.87	0.28	138,138,138,138	0
5	SO4	A	1386	5/5	0.87	0.18	103,104,105,105	0
5	SO4	C	1385	5/5	0.88	0.18	137,137,138,138	0
4	NAG	C	1384	14/15	0.88	0.20	102,104,105,107	0
5	SO4	B	1386	5/5	0.89	0.24	115,115,116,116	0
5	SO4	C	1386	5/5	0.89	0.17	142,142,142,142	0
4	NAG	A	1384	14/15	0.91	0.20	62,64,67,67	0
4	NAG	B	1384	14/15	0.92	0.22	64,66,69,71	0
5	SO4	A	1387	5/5	0.93	0.20	101,101,102,102	0
5	SO4	D	1387	5/5	0.93	0.20	102,102,103,103	0
5	SO4	A	1385	5/5	0.93	0.16	102,102,103,103	0
4	NAG	D	1384	14/15	0.94	0.19	86,87,88,89	0
5	SO4	D	1386	5/5	0.94	0.18	117,118,119,119	0
5	SO4	B	1387	5/5	0.96	0.12	87,87,88,88	0
5	SO4	D	1385	5/5	0.96	0.13	86,87,88,89	0

6.5 Other polymers

There are no such residues in this entry.