



Full wwPDB X-ray Structure Validation Report ⓘ

Oct 3, 2021 – 06:05 PM EDT

PDB ID : 3HLV
Title : Crystal structure of human Estrogen Receptor Alpha Ligand-Binding Domain in complex with a Glucocorticoid Receptor Interacting Protein 1 Nr Box II Peptide and 16-alpha-hydroxy-estrone ((8S,9R,13S,14R,16R)-3,16-dihydroxy-13-methyl-7,8,9,11,12,14,15, 16-octahydro-6H-cyclopenta[a]phenanthren-17-one
Authors : Rajan, S.S.; Kim, Y.; Vanek, K.; Joachimiak, A.; Greene, G.L.
Deposited on : 2009-05-28
Resolution : 3.00 Å(reported)

This is a Full wwPDB X-ray Structure Validation Report for a publicly released PDB entry.

We welcome your comments at validation@mail.wwpdb.org

A user guide is available at

<https://www.wwpdb.org/validation/2017/XrayValidationReportHelp>

with specific help available everywhere you see the ⓘ symbol.

The following versions of software and data (see [references ⓘ](#)) were used in the production of this report:

MolProbity	:	4.02b-467
Mogul	:	1.8.5 (274361), CSD as541be (2020)
Xtriage (Phenix)	:	1.13
EDS	:	2.23.2
buster-report	:	1.1.7 (2018)
Percentile statistics	:	20191225.v01 (using entries in the PDB archive December 25th 2019)
Refmac	:	5.8.0158
CCP4	:	7.0.044 (Gargrove)
Ideal geometry (proteins)	:	Engh & Huber (2001)
Ideal geometry (DNA, RNA)	:	Parkinson et al. (1996)
Validation Pipeline (wwPDB-VP)	:	2.23.2

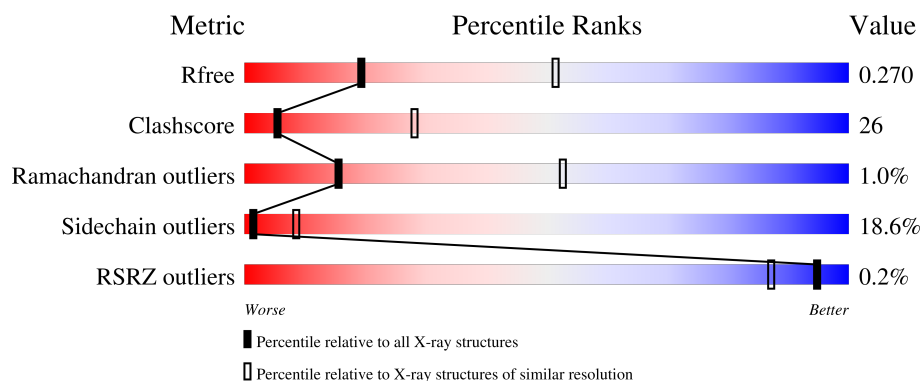
1 Overall quality at a glance

The following experimental techniques were used to determine the structure:

X-RAY DIFFRACTION

The reported resolution of this entry is 3.00 Å.

Percentile scores (ranging between 0-100) for global validation metrics of the entry are shown in the following graphic. The table shows the number of entries on which the scores are based.



Metric	Whole archive (#Entries)	Similar resolution (#Entries, resolution range(Å))
R_{free}	130704	2092 (3.00-3.00)
Clashscore	141614	2416 (3.00-3.00)
Ramachandran outliers	138981	2333 (3.00-3.00)
Sidechain outliers	138945	2336 (3.00-3.00)
RSRZ outliers	127900	1990 (3.00-3.00)

The table below summarises the geometric issues observed across the polymeric chains and their fit to the electron density. The red, orange, yellow and green segments of the lower bar indicate the fraction of residues that contain outliers for ≥ 3 , 2, 1 and 0 types of geometric quality criteria respectively. A grey segment represents the fraction of residues that are not modelled. The numeric value for each fraction is indicated below the corresponding segment, with a dot representing fractions $\leq 5\%$. The upper red bar (where present) indicates the fraction of residues that have poor fit to the electron density. The numeric value is given above the bar.

Mol	Chain	Length	Quality of chain
1	A	253	
1	B	253	
2	C	13	
2	D	13	

2 Entry composition

There are 4 unique types of molecules in this entry. The entry contains 4044 atoms, of which 0 are hydrogens and 0 are deuteriums.

In the tables below, the ZeroOcc column contains the number of atoms modelled with zero occupancy, the AltConf column contains the number of residues with at least one atom in alternate conformation and the Trace column contains the number of residues modelled with at most 2 atoms.

- Molecule 1 is a protein called Estrogen receptor.

Mol	Chain	Residues	Atoms					ZeroOcc	AltConf	Trace
1	A	240	Total	C	N	O	S	0	1	0
			1919	1229	328	343	19			
1	B	240	Total	C	N	O	S	0	0	0
			1914	1224	328	343	19			

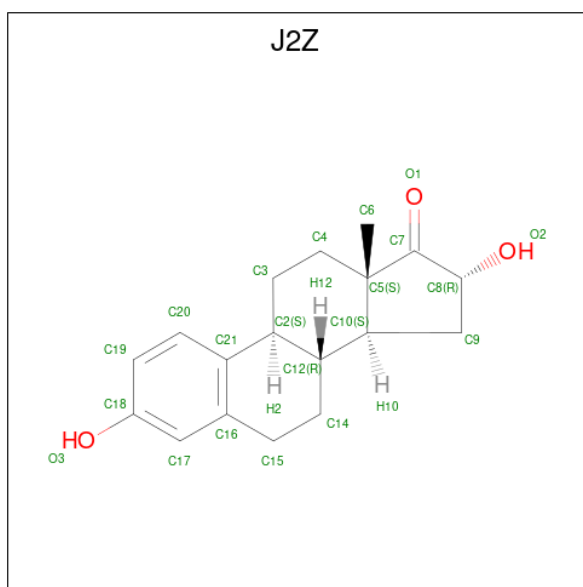
There are 2 discrepancies between the modelled and reference sequences:

Chain	Residue	Modelled	Actual	Comment	Reference
A	537	SER	TYR	engineered mutation	UNP P03372
B	537	SER	TYR	engineered mutation	UNP P03372

- Molecule 2 is a protein called Nuclear receptor coactivator 2.

Mol	Chain	Residues	Atoms				ZeroOcc	AltConf	Trace
2	C	9	Total	C	N	O	0	0	0
			79	51	16	12			
2	D	10	Total	C	N	O	0	0	0
			89	57	19	13			

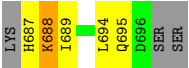
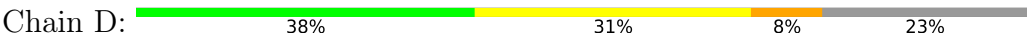
- Molecule 3 is (9beta,13alpha,16beta)-3,16-dihydroxyestra-1,3,5(10)-trien-17-one (three-letter code: J2Z) (formula: C₁₈H₂₂O₃).



Mol	Chain	Residues	Atoms			ZeroOcc	AltConf
3	A	1	Total	C	O	0	0
			21	18	3		
3	B	1	Total	C	O	0	0
			21	18	3		

- Molecule 4 is water.

Mol	Chain	Residues	Atoms		ZeroOcc	AltConf
4	B	1	Total	O	0	0
			1	1		



4 Data and refinement statistics

Property	Value	Source
Space group	P 1 21 1	Depositor
Cell constants a, b, c, α , β , γ	55.83Å 83.37Å 58.48Å 90.00° 108.29° 90.00°	Depositor
Resolution (Å)	46.27 – 3.00 46.27 – 2.88	Depositor EDS
% Data completeness (in resolution range)	99.9 (46.27-3.00) 98.6 (46.27-2.88)	Depositor EDS
R_{merge}	0.14	Depositor
R_{sym}	(Not available)	Depositor
$\langle I/\sigma(I) \rangle$ ¹	1.48 (at 2.86Å)	Xtriage
Refinement program	PHENIX (phenix.refine)	Depositor
R, R_{free}	0.217 , 0.269 0.216 , 0.270	Depositor DCC
R_{free} test set	549 reflections (4.78%)	wwPDB-VP
Wilson B-factor (Å ²)	57.9	Xtriage
Anisotropy	0.583	Xtriage
Bulk solvent k_{sol} (e/Å ³), B_{sol} (Å ²)	0.34 , 65.3	EDS
L-test for twinning ²	$\langle L \rangle = 0.49$, $\langle L^2 \rangle = 0.33$	Xtriage
Estimated twinning fraction	0.026 for l,-k,h	Xtriage
F_o, F_c correlation	0.94	EDS
Total number of atoms	4044	wwPDB-VP
Average B, all atoms (Å ²)	72.0	wwPDB-VP

Xtriage's analysis on translational NCS is as follows: *The largest off-origin peak in the Patterson function is 6.96% of the height of the origin peak. No significant pseudotranslation is detected.*

¹Intensities estimated from amplitudes.

²Theoretical values of $\langle |L| \rangle$, $\langle L^2 \rangle$ for acentric reflections are 0.5, 0.333 respectively for untwinned datasets, and 0.375, 0.2 for perfectly twinned datasets.

5 Model quality [i](#)

5.1 Standard geometry [i](#)

Bond lengths and bond angles in the following residue types are not validated in this section: J2Z

The Z score for a bond length (or angle) is the number of standard deviations the observed value is removed from the expected value. A bond length (or angle) with $|Z| > 5$ is considered an outlier worth inspection. RMSZ is the root-mean-square of all Z scores of the bond lengths (or angles).

Mol	Chain	Bond lengths		Bond angles	
		RMSZ	$\# Z > 5$	RMSZ	$\# Z > 5$
1	A	0.48	0/1957	0.69	1/2640 (0.0%)
1	B	0.45	0/1949	0.65	0/2633
2	C	0.38	0/79	0.68	0/104
2	D	0.41	0/90	0.70	0/119
All	All	0.46	0/4075	0.67	1/5496 (0.0%)

There are no bond length outliers.

All (1) bond angle outliers are listed below:

Mol	Chain	Res	Type	Atoms	Z	Observed(°)	Ideal(°)
1	A	536	LEU	CA-CB-CG	5.43	127.79	115.30

There are no chirality outliers.

There are no planarity outliers.

5.2 Too-close contacts [i](#)

In the following table, the Non-H and H(model) columns list the number of non-hydrogen atoms and hydrogen atoms in the chain respectively. The H(added) column lists the number of hydrogen atoms added and optimized by MolProbity. The Clashes column lists the number of clashes within the asymmetric unit, whereas Symm-Clashes lists symmetry-related clashes.

Mol	Chain	Non-H	H(model)	H(added)	Clashes	Symm-Clashes
1	A	1919	0	1968	121	0
1	B	1914	0	1961	99	0
2	C	79	0	88	3	0
2	D	89	0	95	5	0
3	A	21	0	21	2	0
3	B	21	0	21	1	0

Continued on next page...

Continued from previous page...

Mol	Chain	Non-H	H(model)	H(added)	Clashes	Symm-Clashes
4	B	1	0	0	0	0
All	All	4044	0	4154	214	0

The all-atom clashscore is defined as the number of clashes found per 1000 atoms (including hydrogen atoms). The all-atom clashscore for this structure is 26.

All (214) close contacts within the same asymmetric unit are listed below, sorted by their clash magnitude.

Atom-1	Atom-2	Interatomic distance (Å)	Clash overlap (Å)
1:B:548:ARG:HH11	1:B:548:ARG:HB2	1.17	1.07
1:A:311:THR:HG22	1:A:314:GLN:HG3	1.41	0.98
1:A:465:THR:HG22	1:A:466:LEU:H	1.28	0.98
1:A:340:ALA:HB2	1:A:533:VAL:HG22	1.49	0.95
1:A:434:ARG:HG2	1:A:510:ILE:HD12	1.55	0.89
1:B:329:SER:H	1:B:407:ASN:ND2	1.72	0.86
1:B:329:SER:N	1:B:407:ASN:HD21	1.73	0.86
1:B:418:VAL:HG22	1:B:421:MET:HB2	1.58	0.84
1:B:339:GLU:HG3	1:B:418:VAL:HB	1.58	0.83
1:B:461:PHE:O	1:B:462:LEU:HB2	1.76	0.83
1:B:531:LYS:O	1:B:531:LYS:HG3	1.77	0.82
1:B:412:ARG:HH21	1:B:412:ARG:HG3	1.45	0.82
1:B:377:HIS:CE1	1:B:460:THR:HG23	2.14	0.81
1:A:311:THR:CG2	1:A:314:GLN:HG3	2.10	0.81
1:A:346:LEU:HB3	3:A:1:J2Z:H23	1.62	0.81
1:B:329:SER:H	1:B:407:ASN:HD21	0.87	0.80
1:A:412:ARG:HB3	1:A:429:LEU:HD11	1.64	0.79
1:B:548:ARG:HB2	1:B:548:ARG:NH1	1.98	0.78
1:A:344:GLY:HA2	1:A:534:VAL:HG21	1.65	0.77
1:B:395:SER:HB3	1:B:403:LEU:H	1.48	0.77
1:A:465:THR:HG22	1:A:466:LEU:N	2.03	0.74
1:A:412:ARG:HB3	1:A:429:LEU:CD1	2.18	0.73
1:A:311:THR:HG22	1:A:314:GLN:CG	2.17	0.73
1:A:404:PHE:CD2	1:A:410:LEU:HD23	2.24	0.72
1:A:383:TRP:CD1	1:A:543:MET:HG3	2.24	0.72
1:B:473:ASP:HA	1:B:476:HIS:HB2	1.72	0.70
1:A:311:THR:HG22	1:A:314:GLN:H	1.57	0.70
1:B:354:LEU:O	1:B:358:ILE:HG13	1.93	0.69
1:B:506:GLN:O	1:B:510:ILE:HD12	1.93	0.68
1:A:516:HIS:CD2	1:B:459:TYR:OH	2.46	0.68
1:A:339:GLU:HB3	1:A:417:CYS:O	1.94	0.67
1:A:372:LEU:O	1:A:376:VAL:HG23	1.93	0.67

Continued on next page...

Continued from previous page...

Atom-1	Atom-2	Interatomic distance (Å)	Clash overlap (Å)
1:A:461:PHE:HB2	1:A:472:LYS:NZ	2.09	0.66
1:A:358:ILE:O	1:A:362:LYS:HG3	1.96	0.66
1:A:458:VAL:HG13	1:A:459:TYR:CD2	2.30	0.66
1:A:305:SER:O	1:A:308:LEU:HB3	1.96	0.66
1:A:311:THR:CG2	1:A:314:GLN:H	2.09	0.65
1:A:543:MET:HE2	1:A:543:MET:HA	1.80	0.64
1:B:412:ARG:HG3	1:B:412:ARG:NH2	2.04	0.64
1:A:396:MET:SD	1:A:435:PHE:HB3	2.37	0.64
1:A:474:HIS:O	1:A:477:ARG:HB2	1.98	0.64
1:A:342:MET:O	1:A:345:LEU:HB2	1.98	0.64
1:A:471:GLU:O	1:A:475:ILE:HG22	1.98	0.64
1:A:352:ARG:O	1:A:355:VAL:HG12	1.99	0.63
1:A:507:LEU:O	1:A:510:ILE:HG22	1.99	0.63
1:B:474:HIS:O	1:B:478:VAL:HG23	1.98	0.63
2:C:689:ILE:HD12	2:C:689:ILE:H	1.62	0.63
1:A:543:MET:HA	1:A:543:MET:CE	2.29	0.63
1:B:338:SER:HB2	1:B:341:SER:HB2	1.82	0.61
1:A:459:TYR:HE2	1:A:476:HIS:CE1	2.18	0.61
1:B:525:LEU:HG	1:B:544:LEU:HD11	1.81	0.61
1:B:392:VAL:HG13	1:B:432:SER:HA	1.83	0.60
1:A:311:THR:HG23	1:A:313:ASP:H	1.65	0.60
1:B:539:LEU:HD13	2:D:689:ILE:HG22	1.83	0.60
1:A:378:LEU:HD22	1:A:453:LEU:O	2.03	0.59
1:B:343:MET:HE3	1:B:343:MET:HA	1.83	0.59
1:B:328:TYR:O	1:B:352:ARG:NH1	2.35	0.59
1:B:338:SER:HB2	1:B:341:SER:H	1.67	0.59
1:B:461:PHE:O	1:B:462:LEU:CB	2.50	0.59
1:A:455:ASN:O	1:B:513:HIS:HE1	1.86	0.59
1:A:459:TYR:CE1	1:B:434:ARG:HG2	2.37	0.58
1:B:418:VAL:HG22	1:B:421:MET:CB	2.31	0.58
1:A:472:LYS:O	1:A:476:HIS:CD2	2.57	0.58
1:A:529:LYS:HZ1	1:A:530:CYS:HA	1.68	0.58
1:A:340:ALA:HB1	1:A:533:VAL:O	2.04	0.58
1:A:465:THR:CG2	1:A:466:LEU:H	2.10	0.58
1:A:385:GLU:HG2	1:A:514:ILE:HG22	1.86	0.57
1:A:528:MET:HA	1:A:528:MET:CE	2.34	0.57
1:B:320:LEU:HD12	1:B:446:VAL:HG11	1.86	0.57
1:A:304:ASN:HD22	1:A:304:ASN:N	2.03	0.57
1:B:393:TRP:O	1:B:396:MET:HB2	2.04	0.57
1:A:344:GLY:CA	1:A:534:VAL:HG21	2.33	0.56
1:A:466:LEU:HD13	1:A:467:LYS:N	2.20	0.56

Continued on next page...

Continued from previous page...

Atom-1	Atom-2	Interatomic distance (Å)	Clash overlap (Å)
1:A:455:ASN:O	1:B:513:HIS:CE1	2.58	0.56
1:A:468:SER:HA	1:A:471:GLU:OE2	2.06	0.56
1:A:454:LEU:HG	1:A:475:ILE:HG12	1.88	0.55
1:A:357:MET:CE	1:A:387:LEU:HD13	2.37	0.55
1:A:454:LEU:HG	1:A:475:ILE:CG1	2.37	0.55
1:A:404:PHE:CE2	1:A:410:LEU:HD23	2.41	0.55
1:A:384:LEU:O	1:A:384:LEU:HD12	2.06	0.55
1:B:372:LEU:HD13	1:B:375:GLN:HE21	1.71	0.55
1:A:434:ARG:HG2	1:A:510:ILE:CD1	2.34	0.55
1:A:526:TYR:CD1	1:A:544:LEU:HD11	2.42	0.54
1:A:307:ALA:HA	1:A:310:LEU:HD13	1.90	0.54
1:A:388:MET:O	1:A:392:VAL:HG23	2.07	0.54
1:A:499:GLN:HA	1:A:502:GLN:HG2	1.88	0.54
1:A:317:SER:O	1:A:321:ASP:HB2	2.07	0.54
1:B:373:HIS:O	1:B:376:VAL:HG12	2.08	0.54
1:A:307:ALA:HA	1:A:310:LEU:CD1	2.38	0.54
1:A:382:ALA:HB2	1:A:456:SER:OG	2.08	0.53
1:A:343:MET:SD	1:A:528:MET:HG2	2.48	0.53
1:B:440:LEU:HD13	1:B:441:GLN:O	2.08	0.53
1:B:312:ALA:O	1:B:315:MET:HB3	2.08	0.53
1:A:461:PHE:HB2	1:A:472:LYS:HZ3	1.73	0.53
1:A:473:ASP:O	1:A:477:ARG:HG3	2.08	0.53
1:B:385:GLU:HG2	1:B:514:ILE:HG22	1.89	0.53
1:B:403:LEU:HD13	1:B:409:LEU:HD13	1.92	0.52
1:A:497:LEU:HD21	1:B:497:LEU:HD11	1.91	0.52
1:B:377:HIS:HE1	1:B:460:THR:HG23	1.73	0.52
1:B:337:PHE:CE1	1:B:342:MET:HB3	2.45	0.52
1:B:377:HIS:NE2	1:B:460:THR:HG23	2.25	0.52
1:B:471:GLU:O	1:B:472:LYS:C	2.47	0.52
1:A:444:GLU:OE2	1:A:503:ARG:NH2	2.43	0.51
1:B:385:GLU:HG3	1:B:518:SER:HB2	1.92	0.51
1:A:459:TYR:CE2	1:A:476:HIS:CE1	2.97	0.51
1:B:418:VAL:CG2	1:B:421:MET:HB2	2.35	0.51
1:A:475:ILE:HA	1:A:478:VAL:HG12	1.93	0.51
1:B:448:LEU:O	1:B:452:ILE:HG13	2.11	0.51
1:B:539:LEU:HD13	2:D:689:ILE:CG2	2.41	0.51
1:B:346:LEU:HB3	3:B:2:J2Z:H23	1.93	0.50
1:B:442:GLY:O	1:B:446:VAL:HG13	2.11	0.50
1:B:413:ASN:HA	1:B:416:LYS:HE2	1.93	0.50
1:A:536:LEU:HB2	1:A:541:LEU:HD22	1.94	0.50
1:B:385:GLU:HG3	1:B:518:SER:CB	2.42	0.50

Continued on next page...

Continued from previous page...

Atom-1	Atom-2	Interatomic distance (Å)	Clash overlap (Å)
1:B:548:ARG:HH11	1:B:548:ARG:CB	2.07	0.50
1:A:465:THR:HB	1:A:467:LYS:HZ2	1.77	0.49
1:A:328:TYR:O	1:A:352:ARG:NH1	2.45	0.49
1:A:350:ALA:O	1:A:354:LEU:HG	2.12	0.49
1:A:393:TRP:HA	1:A:396:MET:HG3	1.94	0.49
1:B:305:SER:O	1:B:306:LEU:C	2.50	0.49
1:A:466:LEU:HD13	1:A:467:LYS:H	1.78	0.49
1:B:412:ARG:HH21	1:B:412:ARG:CG	2.18	0.49
1:B:533:VAL:HG23	1:B:534:VAL:HG13	1.94	0.49
1:A:458:VAL:HG21	1:A:475:ILE:HD12	1.95	0.48
1:A:319:LEU:HD21	1:A:365:PRO:HD2	1.95	0.48
1:B:456:SER:HA	1:B:515:ARG:NH2	2.27	0.48
1:A:340:ALA:CB	1:A:533:VAL:HG22	2.34	0.48
1:A:467:LYS:HD2	1:A:468:SER:N	2.29	0.48
1:A:401:LYS:HB3	1:A:409:LEU:CD1	2.43	0.48
1:B:334:THR:O	1:B:335:ARG:HD3	2.14	0.48
1:A:402:LEU:HD12	1:A:425:PHE:CD1	2.49	0.48
1:B:462:LEU:C	1:B:472:LYS:HB2	2.33	0.48
1:A:401:LYS:HZ2	1:A:409:LEU:HD21	1.79	0.48
1:B:315:MET:CE	1:B:482:ILE:HG12	2.44	0.47
1:B:307:ALA:HA	1:B:310:LEU:HD12	1.97	0.47
1:A:304:ASN:N	1:A:304:ASN:ND2	2.62	0.47
1:A:448:LEU:O	1:A:452:ILE:HG13	2.13	0.47
1:B:329:SER:C	1:B:331:TYR:H	2.17	0.47
1:A:359:ASN:O	1:A:363:ARG:HG3	2.14	0.47
1:B:394:ARG:NH2	1:B:404:PHE:O	2.48	0.47
1:A:448:LEU:HD12	1:A:448:LEU:HA	1.67	0.47
1:A:490:MET:HB3	1:A:495:LEU:HD12	1.96	0.47
1:A:376:VAL:HG13	2:C:690:LEU:HD23	1.96	0.47
1:A:516:HIS:HD2	1:B:459:TYR:OH	1.94	0.46
1:B:372:LEU:HD13	1:B:375:GLN:NE2	2.30	0.46
1:B:516:HIS:O	1:B:520:LYS:HG2	2.16	0.46
1:A:338:SER:H	1:A:341:SER:HB3	1.79	0.46
1:A:433:SER:O	1:A:437:MET:HG2	2.16	0.46
1:A:467:LYS:HE3	1:A:467:LYS:HB3	1.60	0.46
1:A:542:GLU:OE2	2:C:688:LYS:HG2	2.14	0.46
1:B:380:GLU:O	1:B:383:TRP:HD1	1.99	0.46
1:B:383:TRP:NE1	1:B:543:MET:HB3	2.31	0.46
1:A:459:TYR:CE2	1:A:476:HIS:HE1	2.33	0.46
1:A:459:TYR:CZ	1:B:434:ARG:HG2	2.51	0.45
1:B:307:ALA:O	1:B:310:LEU:HB2	2.17	0.45

Continued on next page...

Continued from previous page...

Atom-1	Atom-2	Interatomic distance (Å)	Clash overlap (Å)
1:B:487:ILE:HD13	1:B:487:ILE:HA	1.67	0.45
1:B:339:GLU:O	1:B:343:MET:HB2	2.17	0.45
1:B:403:LEU:CD1	1:B:409:LEU:HD13	2.47	0.45
1:B:310:LEU:HD22	1:B:315:MET:HA	1.98	0.45
1:B:362:LYS:HD2	2:D:694:LEU:HD23	1.99	0.45
1:B:392:VAL:HG13	1:B:432:SER:CA	2.45	0.45
1:A:487:ILE:HD12	1:A:487:ILE:HA	1.86	0.45
1:A:541:LEU:HD13	1:A:541:LEU:HA	1.75	0.45
1:B:492:LYS:HE2	1:B:492:LYS:HA	1.97	0.45
1:A:513:HIS:CE1	1:B:459:TYR:HB3	2.52	0.45
1:A:487:ILE:HD11	1:A:500:GLN:HB3	1.97	0.44
1:A:497:LEU:O	1:A:500:GLN:HB2	2.16	0.44
1:B:479:LEU:O	1:B:483:THR:HG23	2.18	0.44
1:A:524:HIS:C	1:A:524:HIS:CD2	2.91	0.44
1:B:335:ARG:HG3	1:B:336:PRO:CD	2.47	0.44
1:A:338:SER:N	1:A:341:SER:HB3	2.32	0.44
1:A:351:ASP:OD2	1:A:537:SER:HB3	2.18	0.44
1:A:487:ILE:HG21	1:B:501:HIS:CE1	2.53	0.43
1:B:326:ILE:HD12	1:B:326:ILE:H	1.83	0.43
1:B:379:LEU:O	1:B:383:TRP:HB3	2.18	0.43
1:A:368:VAL:O	1:A:368:VAL:HG22	2.19	0.43
1:A:497:LEU:HD12	1:A:497:LEU:HA	1.69	0.43
1:A:514:ILE:HA	1:A:517:MET:HE2	2.01	0.43
1:B:462:LEU:O	1:B:472:LYS:HB2	2.19	0.43
1:A:433:SER:HA	1:A:436:ARG:NH1	2.33	0.43
1:A:407:ASN:HD22	1:A:407:ASN:H	1.67	0.43
1:B:320:LEU:HD12	1:B:320:LEU:HA	1.79	0.43
1:A:516:HIS:O	1:A:519:ASN:HB2	2.19	0.43
1:B:383:TRP:CE2	1:B:543:MET:HB3	2.54	0.42
1:B:479:LEU:HD12	1:B:479:LEU:HA	1.88	0.42
1:B:497:LEU:HD23	1:B:497:LEU:HA	1.90	0.42
1:B:461:PHE:HZ	1:B:475:ILE:HD12	1.84	0.42
1:B:472:LYS:O	1:B:475:ILE:HB	2.20	0.42
1:A:360:TRP:CZ2	1:A:449:LYS:HE2	2.54	0.42
1:A:411:ASP:C	1:A:413:ASN:H	2.22	0.42
1:A:338:SER:HB3	1:A:341:SER:H	1.85	0.41
1:A:539:LEU:HD22	1:A:539:LEU:O	2.20	0.41
1:A:429:LEU:HD23	1:A:429:LEU:HA	1.92	0.41
1:A:383:TRP:CD2	1:A:543:MET:HG2	2.55	0.41
1:A:529:LYS:HB2	1:A:536:LEU:HD11	2.02	0.41
1:B:362:LYS:HA	1:B:367:PHE:HD2	1.84	0.41

Continued on next page...

Continued from previous page...

Atom-1	Atom-2	Interatomic distance (Å)	Clash overlap (Å)
1:A:379:LEU:O	1:A:383:TRP:HB3	2.21	0.41
1:A:339:GLU:HG3	1:A:340:ALA:N	2.36	0.41
1:A:384:LEU:O	1:A:388:MET:HG3	2.20	0.41
1:B:459:TYR:HD1	1:B:459:TYR:H	1.69	0.41
1:B:462:LEU:O	1:B:472:LYS:HG3	2.19	0.41
1:B:525:LEU:HG	1:B:544:LEU:CD1	2.49	0.41
2:D:688:LYS:N	2:D:688:LYS:HD3	2.36	0.41
1:A:343:MET:HE2	1:A:347:THR:CG2	2.50	0.41
1:A:343:MET:HG3	1:A:418:VAL:HG21	2.03	0.41
1:B:358:ILE:O	1:B:358:ILE:HG22	2.20	0.41
2:D:688:LYS:HD2	2:D:688:LYS:HA	1.82	0.41
1:B:458:VAL:HA	1:B:461:PHE:CE1	2.55	0.40
1:A:465:THR:HB	1:A:467:LYS:NZ	2.37	0.40
1:B:335:ARG:HG3	1:B:336:PRO:HD2	2.03	0.40
1:A:349:LEU:CD1	3:A:1:J2Z:H19A	2.52	0.40
1:B:481:LYS:HD2	1:B:481:LYS:HA	1.85	0.40
1:B:504:LEU:O	1:B:508:LEU:HD13	2.22	0.40
1:B:394:ARG:HD2	1:B:403:LEU:O	2.22	0.40

There are no symmetry-related clashes.

5.3 Torsion angles

5.3.1 Protein backbone

In the following table, the Percentiles column shows the percent Ramachandran outliers of the chain as a percentile score with respect to all X-ray entries followed by that with respect to entries of similar resolution.

The Analysed column shows the number of residues for which the backbone conformation was analysed, and the total number of residues.

Mol	Chain	Analysed	Favoured	Allowed	Outliers	Percentiles	
1	A	235/253 (93%)	220 (94%)	12 (5%)	3 (1%)	12	45
1	B	236/253 (93%)	221 (94%)	13 (6%)	2 (1%)	19	57
2	C	7/13 (54%)	7 (100%)	0	0	100	100
2	D	8/13 (62%)	8 (100%)	0	0	100	100
All	All	486/532 (91%)	456 (94%)	25 (5%)	5 (1%)	15	53

All (5) Ramachandran outliers are listed below:

Mol	Chain	Res	Type
1	A	419	GLU
1	A	537	SER
1	B	472	LYS
1	A	331	TYR
1	B	305	SER

5.3.2 Protein sidechains ⓘ

In the following table, the Percentiles column shows the percent sidechain outliers of the chain as a percentile score with respect to all X-ray entries followed by that with respect to entries of similar resolution.

The Analysed column shows the number of residues for which the sidechain conformation was analysed, and the total number of residues.

Mol	Chain	Analysed	Rotameric	Outliers	Percentiles	
1	A	217/229 (95%)	175 (81%)	42 (19%)	1	7
1	B	216/229 (94%)	178 (82%)	38 (18%)	2	10
2	C	9/13 (69%)	8 (89%)	1 (11%)	6	25
2	D	10/13 (77%)	7 (70%)	3 (30%)	0	1
All	All	452/484 (93%)	368 (81%)	84 (19%)	1	8

All (84) residues with a non-rotameric sidechain are listed below:

Mol	Chain	Res	Type
1	A	304	ASN
1	A	308	LEU
1	A	311	THR
1	A	315	MET
1	A	320	LEU
1	A	328	TYR
1	A	330	GLU
1	A	331	TYR
1	A	337	PHE
1	A	342	MET
1	A	343	MET
1	A	346	LEU
1	A	348	ASN
1	A	349	LEU
1	A	372	LEU
1	A	387	LEU
1	A	396	MET

Continued on next page...

Continued from previous page...

Mol	Chain	Res	Type
1	A	397	GLU
1	A	407	ASN
1	A	409	LEU
1	A	412	ARG
1	A	419	GLU
1	A	448	LEU
1	A	454	LEU
1	A	462	LEU
1	A	466	LEU
1	A	467	LYS
1	A	469	LEU
1	A	475	ILE
1	A	481	LYS
1	A	497	LEU
1	A	508	LEU
1	A	528	MET
1	A	529	LYS
1	A	530	CYS
1	A	536	LEU
1	A	539	LEU
1	A	540	LEU
1	A	541	LEU
1	A	542	GLU
1	A	543	MET
1	A	548	ARG
1	B	305	SER
1	B	306	LEU
1	B	308	LEU
1	B	310	LEU
1	B	319	LEU
1	B	320	LEU
1	B	335	ARG
1	B	337	PHE
1	B	342	MET
1	B	345	LEU
1	B	354	LEU
1	B	370	LEU
1	B	371	THR
1	B	376	VAL
1	B	378	LEU
1	B	379	LEU
1	B	397	GLU

Continued on next page...

Continued from previous page...

Mol	Chain	Res	Type
1	B	410	LEU
1	B	412	ARG
1	B	439	ASN
1	B	440	LEU
1	B	459	TYR
1	B	469	LEU
1	B	474	HIS
1	B	481	LYS
1	B	483	THR
1	B	492	LYS
1	B	497	LEU
1	B	509	LEU
1	B	510	ILE
1	B	524	HIS
1	B	530	CYS
1	B	531	LYS
1	B	533	VAL
1	B	540	LEU
1	B	544	LEU
1	B	545	ASP
1	B	548	ARG
2	C	694	LEU
2	D	687	HIS
2	D	688	LYS
2	D	695	GLN

Sometimes sidechains can be flipped to improve hydrogen bonding and reduce clashes. All (18) such sidechains are listed below:

Mol	Chain	Res	Type
1	A	375	GLN
1	A	407	ASN
1	A	413	ASN
1	A	476	HIS
1	A	499	GLN
1	A	516	HIS
1	A	519	ASN
1	A	524	HIS
1	B	314	GLN
1	B	375	GLN
1	B	398	HIS
1	B	407	ASN
1	B	413	ASN

Continued on next page...

Continued from previous page...

Mol	Chain	Res	Type
1	B	500	GLN
1	B	501	HIS
1	B	506	GLN
1	B	513	HIS
2	D	695	GLN

5.3.3 RNA [i](#)

There are no RNA molecules in this entry.

5.4 Non-standard residues in protein, DNA, RNA chains [i](#)

There are no non-standard protein/DNA/RNA residues in this entry.

5.5 Carbohydrates [i](#)

There are no monosaccharides in this entry.

5.6 Ligand geometry [i](#)

2 ligands are modelled in this entry.

In the following table, the Counts columns list the number of bonds (or angles) for which Mogul statistics could be retrieved, the number of bonds (or angles) that are observed in the model and the number of bonds (or angles) that are defined in the Chemical Component Dictionary. The Link column lists molecule types, if any, to which the group is linked. The Z score for a bond length (or angle) is the number of standard deviations the observed value is removed from the expected value. A bond length (or angle) with $|Z| > 2$ is considered an outlier worth inspection. RMSZ is the root-mean-square of all Z scores of the bond lengths (or angles).

Mol	Type	Chain	Res	Link	Bond lengths			Bond angles		
					Counts	RMSZ	$\# Z > 2$	Counts	RMSZ	$\# Z > 2$
3	J2Z	B	2	-	23,24,24	0.95	1 (4%)	34,38,38	1.35	3 (8%)
3	J2Z	A	1	-	23,24,24	0.85	1 (4%)	34,38,38	1.42	7 (20%)

In the following table, the Chirals column lists the number of chiral outliers, the number of chiral centers analysed, the number of these observed in the model and the number defined in the Chemical Component Dictionary. Similar counts are reported in the Torsion and Rings columns. '-' means no outliers of that kind were identified.

Mol	Type	Chain	Res	Link	Chirals	Torsions	Rings
3	J2Z	B	2	-	-	-	0/4/4/4
3	J2Z	A	1	-	-	-	0/4/4/4

All (2) bond length outliers are listed below:

Mol	Chain	Res	Type	Atoms	Z	Observed(Å)	Ideal(Å)
3	B	2	J2Z	C21-C2	-2.64	1.48	1.52
3	A	1	J2Z	C21-C2	-2.62	1.48	1.52

All (10) bond angle outliers are listed below:

Mol	Chain	Res	Type	Atoms	Z	Observed(°)	Ideal(°)
3	A	1	J2Z	C5-C10-C12	-3.43	109.45	113.12
3	B	2	J2Z	C5-C10-C12	-3.26	109.63	113.12
3	A	1	J2Z	C2-C12-C10	-2.97	104.44	108.73
3	B	2	J2Z	C2-C12-C10	-2.91	104.52	108.73
3	A	1	J2Z	C15-C14-C12	2.60	114.92	110.59
3	A	1	J2Z	C3-C4-C5	-2.37	107.60	112.74
3	A	1	J2Z	C14-C12-C2	2.36	111.58	109.28
3	A	1	J2Z	C6-C5-C4	-2.11	108.64	111.13
3	A	1	J2Z	O1-C7-C8	-2.11	122.72	126.57
3	B	2	J2Z	C14-C12-C2	2.09	111.32	109.28

There are no chirality outliers.

There are no torsion outliers.

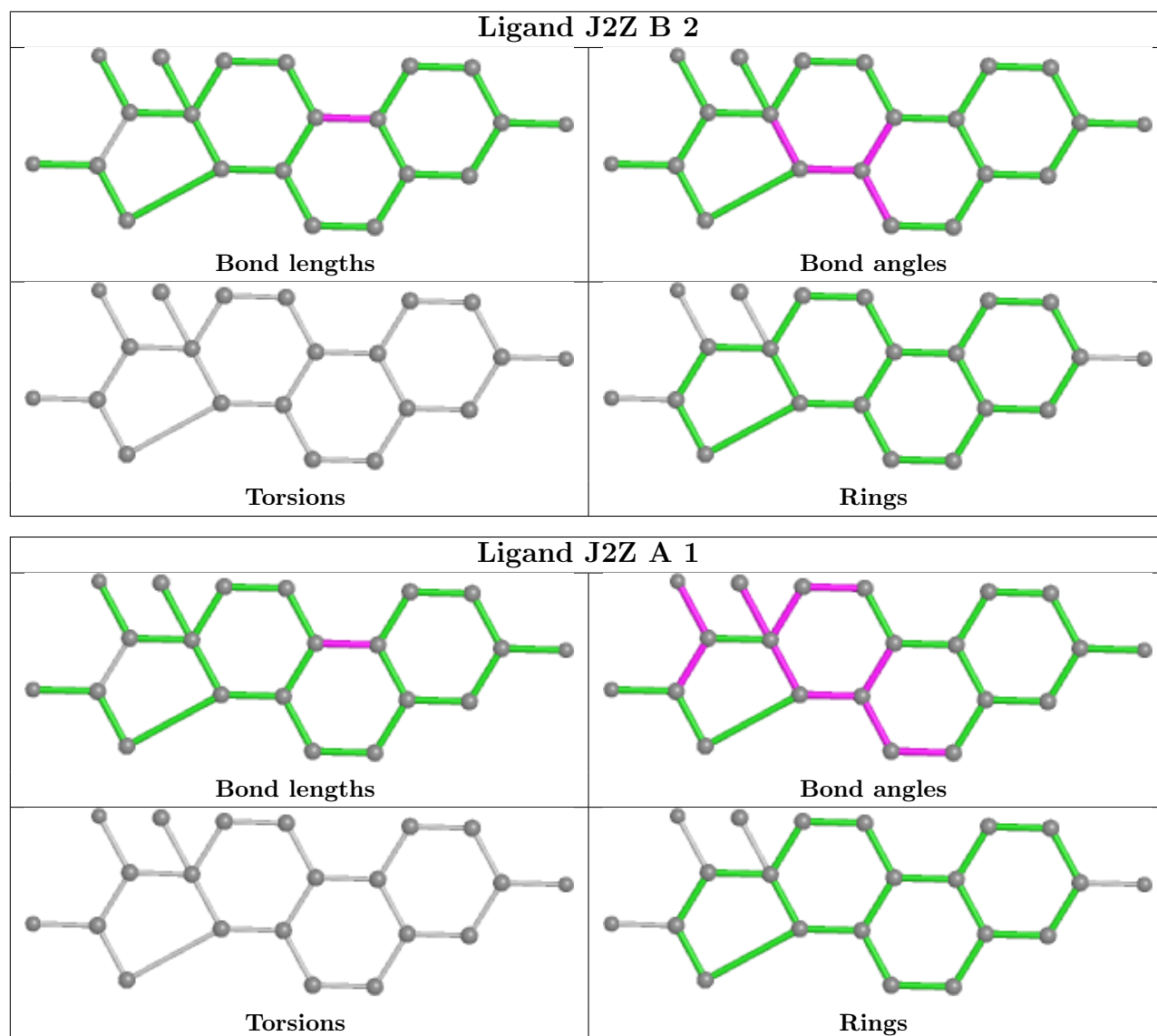
There are no ring outliers.

2 monomers are involved in 3 short contacts:

Mol	Chain	Res	Type	Clashes	Symm-Clashes
3	B	2	J2Z	1	0
3	A	1	J2Z	2	0

The following is a two-dimensional graphical depiction of Mogul quality analysis of bond lengths, bond angles, torsion angles, and ring geometry for all instances of the Ligand of Interest. In addition, ligands with molecular weight > 250 and outliers as shown on the validation Tables will also be included. For torsion angles, if less than 5% of the Mogul distribution of torsion angles is within 10 degrees of the torsion angle in question, then that torsion angle is considered an outlier. Any bond that is central to one or more torsion angles identified as an outlier by Mogul will be highlighted in the graph. For rings, the root-mean-square deviation (RMSD) between the ring in question and similar rings identified by Mogul is calculated over all ring torsion angles. If the average RMSD is greater than 60 degrees and the minimal RMSD between the ring in question and any Mogul-identified rings is also greater than 60 degrees, then that ring is considered an outlier.

The outliers are highlighted in purple. The color gray indicates Mogul did not find sufficient equivalents in the CSD to analyse the geometry.



5.7 Other polymers ⓘ

There are no such residues in this entry.

5.8 Polymer linkage issues ⓘ

There are no chain breaks in this entry.

6 Fit of model and data [i](#)

6.1 Protein, DNA and RNA chains [i](#)

In the following table, the column labelled ‘#RSRZ> 2’ contains the number (and percentage) of RSRZ outliers, followed by percent RSRZ outliers for the chain as percentile scores relative to all X-ray entries and entries of similar resolution. The OWAB column contains the minimum, median, 95th percentile and maximum values of the occupancy-weighted average B-factor per residue. The column labelled ‘Q< 0.9’ lists the number of (and percentage) of residues with an average occupancy less than 0.9.

Mol	Chain	Analysed	<RSRZ>	#RSRZ>2	OWAB(Å ²)	Q<0.9
1	A	240/253 (94%)	-0.31	0 100 100	42, 70, 113, 131	0
1	B	240/253 (94%)	-0.35	1 (0%) 92 79	45, 65, 104, 124	0
2	C	9/13 (69%)	-0.19	0 100 100	78, 83, 96, 102	0
2	D	10/13 (76%)	-0.12	0 100 100	70, 79, 110, 122	0
All	All	499/532 (93%)	-0.32	1 (0%) 95 87	42, 68, 110, 131	0

All (1) RSRZ outliers are listed below:

Mol	Chain	Res	Type	RSRZ
1	B	468	SER	2.5

6.2 Non-standard residues in protein, DNA, RNA chains [i](#)

There are no non-standard protein/DNA/RNA residues in this entry.

6.3 Carbohydrates [i](#)

There are no monosaccharides in this entry.

6.4 Ligands [i](#)

In the following table, the Atoms column lists the number of modelled atoms in the group and the number defined in the chemical component dictionary. The B-factors column lists the minimum, median, 95th percentile and maximum values of B factors of atoms in the group. The column labelled ‘Q< 0.9’ lists the number of atoms with occupancy less than 0.9.

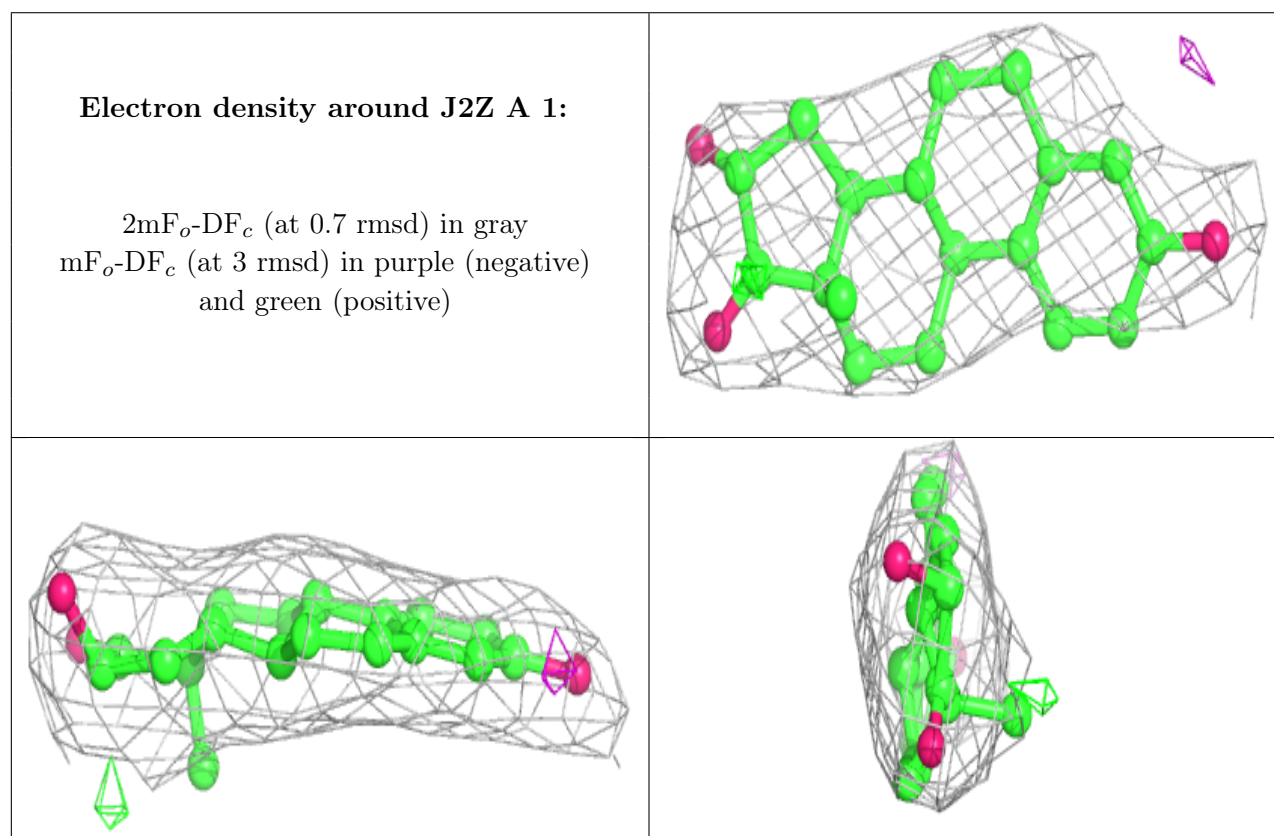
Mol	Type	Chain	Res	Atoms	RSCC	RSR	B-factors(Å ²)	Q<0.9
3	J2Z	A	1	21/21	0.91	0.23	47,61,71,76	0

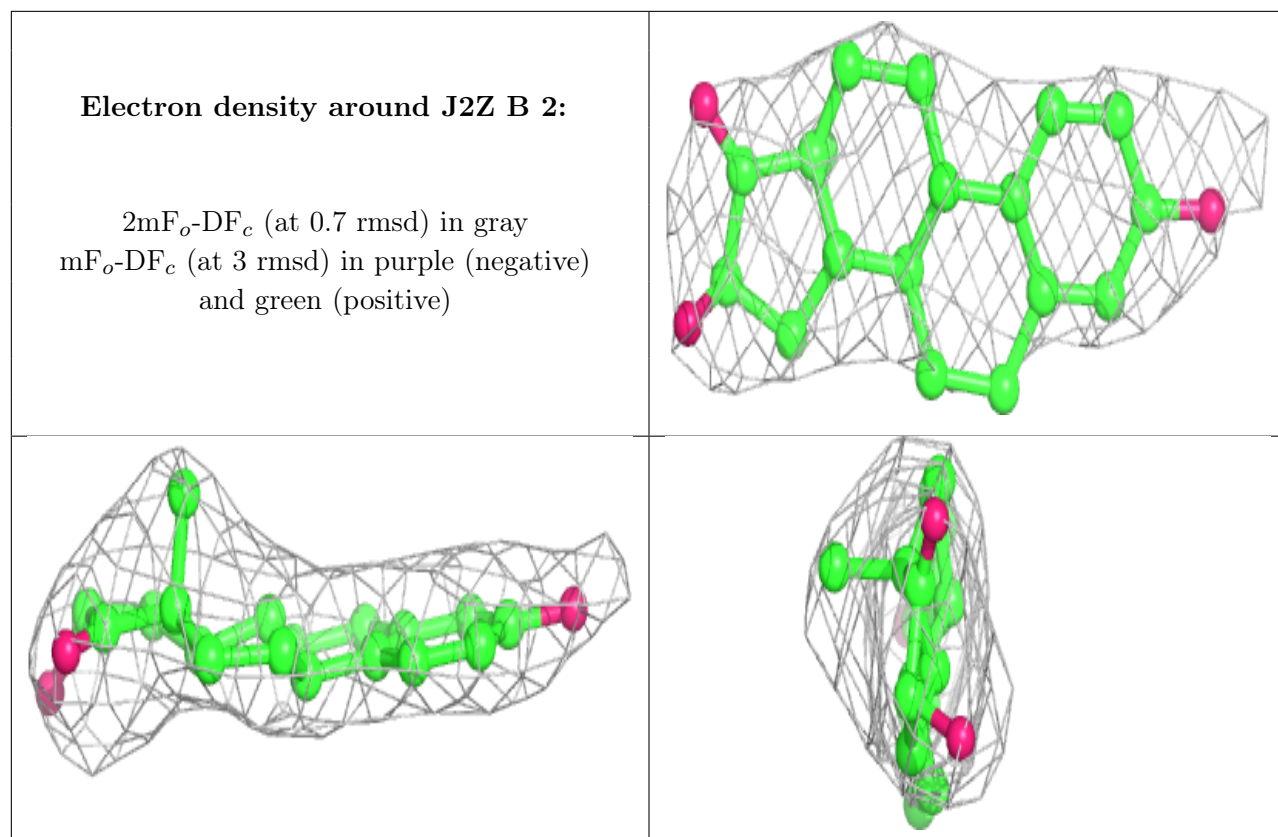
Continued on next page...

Continued from previous page...

Mol	Type	Chain	Res	Atoms	RSCC	RSR	B-factors(\AA^2)	Q<0.9
3	J2Z	B	2	21/21	0.94	0.28	54,66,77,81	0

The following is a graphical depiction of the model fit to experimental electron density of all instances of the Ligand of Interest. In addition, ligands with molecular weight > 250 and outliers as shown on the geometry validation Tables will also be included. Each fit is shown from different orientation to approximate a three-dimensional view.





6.5 Other polymers [i](#)

There are no such residues in this entry.