



# wwPDB X-ray Structure Validation Summary Report ⓘ

May 22, 2020 – 09:29 pm BST

PDB ID : 5HL1  
Title : Crystal structure of glutaminase C in complex with inhibitor CB-839  
Authors : Huang, Q.; Cerione, R.A.  
Deposited on : 2016-01-14  
Resolution : 2.40 Å(reported)

This is a wwPDB X-ray Structure Validation Summary Report for a publicly released PDB entry.

We welcome your comments at [validation@mail.wwpdb.org](mailto:validation@mail.wwpdb.org)

A user guide is available at

<https://www.wwpdb.org/validation/2017/XrayValidationReportHelp>

with specific help available everywhere you see the ⓘ symbol.

---

The following versions of software and data (see [references ⓘ](#)) were used in the production of this report:

MolProbity : 4.02b-467  
Mogul : 1.8.5 (274361), CSD as541be (2020)  
Xtriage (Phenix) : 1.13  
EDS : 2.11  
buster-report : 1.1.7 (2018)  
Percentile statistics : 20191225.v01 (using entries in the PDB archive December 25th 2019)  
Refmac : 5.8.0158  
CCP4 : 7.0.044 (Gargrove)  
Ideal geometry (proteins) : Engh & Huber (2001)  
Ideal geometry (DNA, RNA) : Parkinson et al. (1996)  
Validation Pipeline (wwPDB-VP) : 2.11

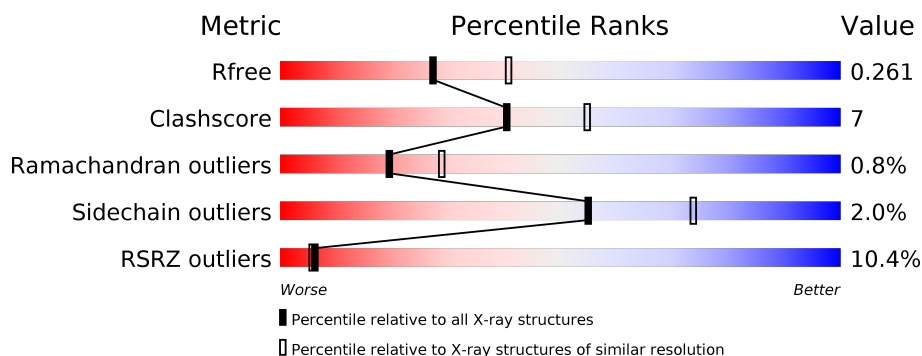
# 1 Overall quality at a glance

The following experimental techniques were used to determine the structure:

*X-RAY DIFFRACTION*

The reported resolution of this entry is 2.40 Å.

Percentile scores (ranging between 0-100) for global validation metrics of the entry are shown in the following graphic. The table shows the number of entries on which the scores are based.



Metric	Whole archive (#Entries)	Similar resolution (#Entries, resolution range(Å))
$R_{free}$	130704	3907 (2.40-2.40)
Clashscore	141614	4398 (2.40-2.40)
Ramachandran outliers	138981	4318 (2.40-2.40)
Sidechain outliers	138945	4319 (2.40-2.40)
RSRZ outliers	127900	3811 (2.40-2.40)

The table below summarises the geometric issues observed across the polymeric chains and their fit to the electron density. The red, orange, yellow and green segments on the lower bar indicate the fraction of residues that contain outliers for  $\geq 3$ , 2, 1 and 0 types of geometric quality criteria respectively. A grey segment represents the fraction of residues that are not modelled. The numeric value for each fraction is indicated below the corresponding segment, with a dot representing fractions  $\leq 5\%$ . The upper red bar (where present) indicates the fraction of residues that have poor fit to the electron density. The numeric value is given above the bar.

Mol	Chain	Length	Quality of chain
1	A	539	
1	B	539	
1	C	539	
1	D	539	

## 2 Entry composition

There are 3 unique types of molecules in this entry. The entry contains 13120 atoms, of which 0 are hydrogens and 0 are deuteriums.

In the tables below, the ZeroOcc column contains the number of atoms modelled with zero occupancy, the AltConf column contains the number of residues with at least one atom in alternate conformation and the Trace column contains the number of residues modelled with at most 2 atoms.

- Molecule 1 is a protein called Glutaminase kidney isoform, mitochondrial.

Mol	Chain	Residues	Atoms					ZeroOcc	AltConf	Trace
1	A	404	Total	C	N	O	S	1	0	0
			3148	2003	533	584	28			
1	B	410	Total	C	N	O	S	1	0	0
			3197	2037	540	592	28			
1	C	404	Total	C	N	O	S	1	0	0
			3145	2002	533	582	28			
1	D	402	Total	C	N	O	S	1	0	0
			3128	1988	530	582	28			

There are 48 discrepancies between the modelled and reference sequences:

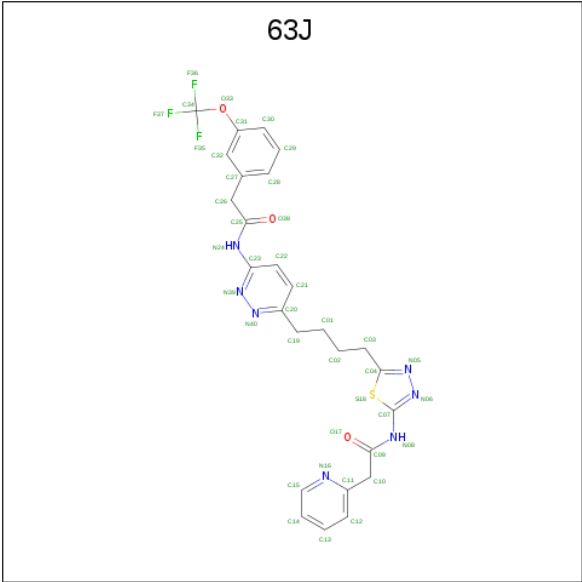
Chain	Residue	Modelled	Actual	Comment	Reference
A	60	MET	-	initiating methionine	UNP O94925
A	61	ARG	-	expression tag	UNP O94925
A	62	GLY	-	expression tag	UNP O94925
A	63	SER	-	expression tag	UNP O94925
A	64	HIS	-	expression tag	UNP O94925
A	65	HIS	-	expression tag	UNP O94925
A	66	HIS	-	expression tag	UNP O94925
A	67	HIS	-	expression tag	UNP O94925
A	68	HIS	-	expression tag	UNP O94925
A	69	HIS	-	expression tag	UNP O94925
A	70	GLY	-	expression tag	UNP O94925
A	71	SER	-	expression tag	UNP O94925
B	60	MET	-	initiating methionine	UNP O94925
B	61	ARG	-	expression tag	UNP O94925
B	62	GLY	-	expression tag	UNP O94925
B	63	SER	-	expression tag	UNP O94925
B	64	HIS	-	expression tag	UNP O94925
B	65	HIS	-	expression tag	UNP O94925
B	66	HIS	-	expression tag	UNP O94925
B	67	HIS	-	expression tag	UNP O94925
B	68	HIS	-	expression tag	UNP O94925

*Continued on next page...*

*Continued from previous page...*

Chain	Residue	Modelled	Actual	Comment	Reference
B	69	HIS	-	expression tag	UNP O94925
B	70	GLY	-	expression tag	UNP O94925
B	71	SER	-	expression tag	UNP O94925
C	60	MET	-	initiating methionine	UNP O94925
C	61	ARG	-	expression tag	UNP O94925
C	62	GLY	-	expression tag	UNP O94925
C	63	SER	-	expression tag	UNP O94925
C	64	HIS	-	expression tag	UNP O94925
C	65	HIS	-	expression tag	UNP O94925
C	66	HIS	-	expression tag	UNP O94925
C	67	HIS	-	expression tag	UNP O94925
C	68	HIS	-	expression tag	UNP O94925
C	69	HIS	-	expression tag	UNP O94925
C	70	GLY	-	expression tag	UNP O94925
C	71	SER	-	expression tag	UNP O94925
D	60	MET	-	initiating methionine	UNP O94925
D	61	ARG	-	expression tag	UNP O94925
D	62	GLY	-	expression tag	UNP O94925
D	63	SER	-	expression tag	UNP O94925
D	64	HIS	-	expression tag	UNP O94925
D	65	HIS	-	expression tag	UNP O94925
D	66	HIS	-	expression tag	UNP O94925
D	67	HIS	-	expression tag	UNP O94925
D	68	HIS	-	expression tag	UNP O94925
D	69	HIS	-	expression tag	UNP O94925
D	70	GLY	-	expression tag	UNP O94925
D	71	SER	-	expression tag	UNP O94925

- Molecule 2 is 2-(pyridin-2-yl)-N-(5-{4-[6-({[3-(trifluoromethoxy)phenyl]acetyl}amino)pyridazin-3-yl]butyl}-1,3,4-thiadiazol-2-yl)acetamide (three-letter code: 63J) (formula: C<sub>26</sub>H<sub>24</sub>F<sub>3</sub>N<sub>7</sub>O<sub>3</sub>S).



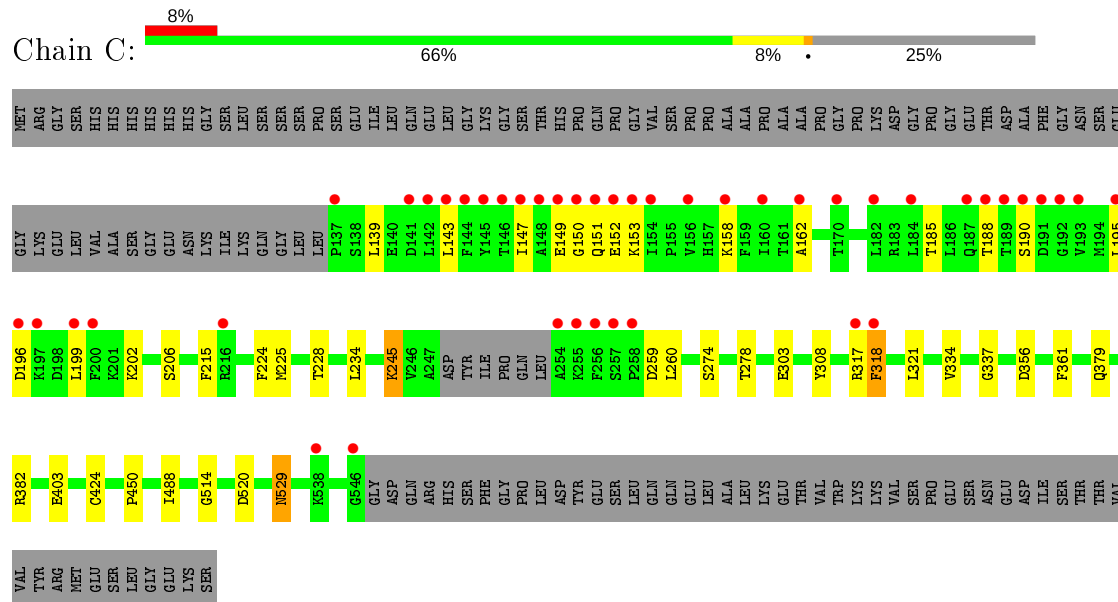
Mol	Chain	Residues	Atoms						ZeroOcc	AltConf
2	A	1	Total	C	F	N	O	S	0	0
			40	26	3	7	3	1		
2	B	1	Total	C	F	N	O	S	0	0
			40	26	3	7	3	1		

- Molecule 3 is water.

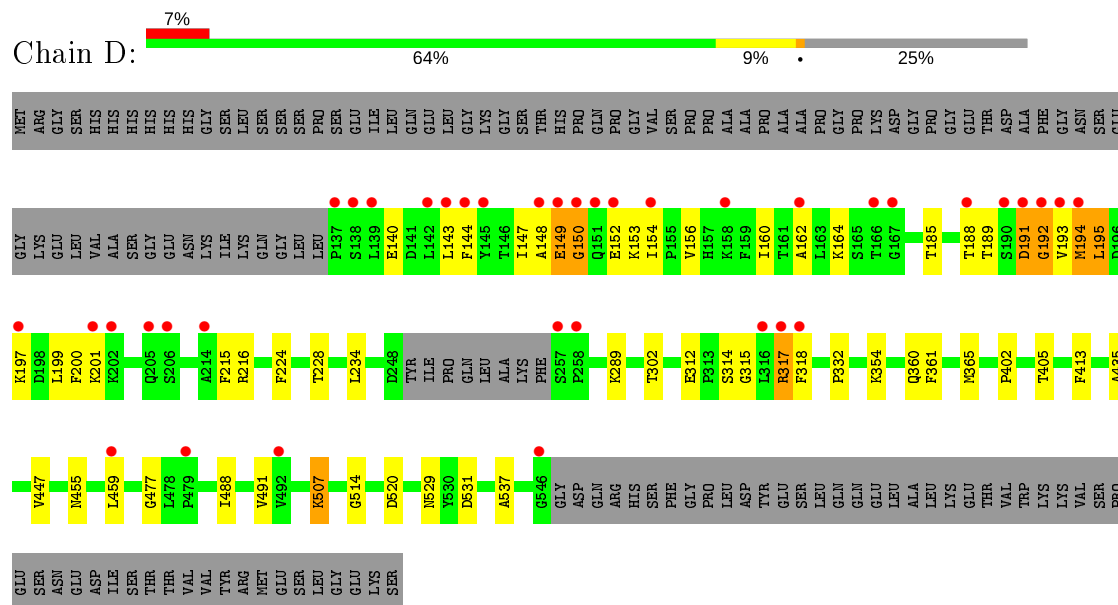
Mol	Chain	Residues	Atoms		ZeroOcc	AltConf
3	A	113	Total	O	0	0
			113	113		
3	B	91	Total	O	0	0
			91	91		
3	C	116	Total	O	0	0
			116	116		
3	D	102	Total	O	0	0
			102	102		



- Molecule 1: Glutaminase kidney isoform, mitochondrial



- Molecule 1: Glutaminase kidney isoform, mitochondrial



## 4 Data and refinement statistics

Property	Value	Source
Space group	P 21 21 21	Depositor
Cell constants a, b, c, $\alpha$ , $\beta$ , $\gamma$	98.53Å 139.38Å 177.96Å 90.00° 90.00° 90.00°	Depositor
Resolution (Å)	47.48 – 2.40 47.93 – 2.40	Depositor EDS
% Data completeness (in resolution range)	99.6 (47.48-2.40) 99.9 (47.93-2.40)	Depositor EDS
$R_{merge}$	(Not available)	Depositor
$R_{sym}$	(Not available)	Depositor
$\langle I/\sigma(I) \rangle$ <sup>1</sup>	2.26 (at 2.39Å)	Xtriage
Refinement program	PHENIX (1.10.1 _2155: ???)	Depositor
R, $R_{free}$	0.225 , 0.264 0.224 , 0.261	Depositor DCC
$R_{free}$ test set	2000 reflections (2.08%)	wwPDB-VP
Wilson B-factor (Å <sup>2</sup> )	38.6	Xtriage
Anisotropy	0.453	Xtriage
Bulk solvent $k_{sol}$ (e/Å <sup>3</sup> ), $B_{sol}$ (Å <sup>2</sup> )	0.34 , 43.1	EDS
L-test for twinning <sup>2</sup>	$\langle  L  \rangle = 0.50$ , $\langle L^2 \rangle = 0.33$	Xtriage
Estimated twinning fraction	No twinning to report.	Xtriage
$F_o, F_c$ correlation	0.95	EDS
Total number of atoms	13120	wwPDB-VP
Average B, all atoms (Å <sup>2</sup> )	46.0	wwPDB-VP

Xtriage's analysis on translational NCS is as follows: *The analyses of the Patterson function reveals a significant off-origin peak that is 57.02 % of the origin peak, indicating pseudo-translational symmetry. The chance of finding a peak of this or larger height randomly in a structure without pseudo-translational symmetry is equal to 2.5157e-05. The detected translational NCS is most likely also responsible for the elevated intensity ratio.*

<sup>1</sup>Intensities estimated from amplitudes.

<sup>2</sup>Theoretical values of  $\langle |L| \rangle$ ,  $\langle L^2 \rangle$  for acentric reflections are 0.5, 0.333 respectively for untwinned datasets, and 0.375, 0.2 for perfectly twinned datasets.



## 5 Model quality

### 5.1 Standard geometry

Bond lengths and bond angles in the following residue types are not validated in this section: 63J

The Z score for a bond length (or angle) is the number of standard deviations the observed value is removed from the expected value. A bond length (or angle) with  $|Z| > 5$  is considered an outlier worth inspection. RMSZ is the root-mean-square of all Z scores of the bond lengths (or angles).

Mol	Chain	Bond lengths		Bond angles	
		RMSZ	$\# Z  > 5$	RMSZ	$\# Z  > 5$
1	A	0.49	3/3217 (0.1%)	0.64	1/4338 (0.0%)
1	B	0.68	7/3269 (0.2%)	0.68	2/4412 (0.0%)
1	C	0.47	2/3214 (0.1%)	0.61	0/4334
1	D	0.46	0/3196	0.65	2/4311 (0.0%)
All	All	0.53	12/12896 (0.1%)	0.65	5/17395 (0.0%)

Chiral center outliers are detected by calculating the chiral volume of a chiral center and verifying if the center is modelled as a planar moiety or with the opposite hand. A planarity outlier is detected by checking planarity of atoms in a peptide group, atoms in a mainchain group or atoms of a sidechain that are expected to be planar.

Mol	Chain	#Chirality outliers	#Planarity outliers
1	B	0	1
1	D	0	1
All	All	0	2

The worst 5 of 12 bond length outliers are listed below:

Mol	Chain	Res	Type	Atoms	Z	Observed(Å)	Ideal(Å)
1	B	317	ARG	CG-CD	-14.69	1.15	1.51
1	B	317	ARG	CZ-NH2	-13.76	1.15	1.33
1	B	197	LYS	CE-NZ	10.94	1.76	1.49
1	B	144	PHE	CB-CG	-9.96	1.34	1.51
1	B	317	ARG	CB-CG	-7.13	1.33	1.52

All (5) bond angle outliers are listed below:

Mol	Chain	Res	Type	Atoms	Z	Observed(°)	Ideal(°)
1	D	317	ARG	NE-CZ-NH1	-12.06	114.27	120.30
1	B	317	ARG	CG-CD-NE	-11.69	87.24	111.80

*Continued on next page...*

*Continued from previous page...*

Mol	Chain	Res	Type	Atoms	Z	Observed(°)	Ideal(°)
1	B	317	ARG	NE-CZ-NH2	10.10	125.35	120.30
1	A	152	GLU	CA-CB-CG	8.47	132.03	113.40
1	D	317	ARG	NE-CZ-NH2	5.32	122.96	120.30

There are no chirality outliers.

All (2) planarity outliers are listed below:

Mol	Chain	Res	Type	Group
1	B	544	ARG	Peptide
1	D	150	GLY	Mainchain

## 5.2 Too-close contacts

In the following table, the Non-H and H(model) columns list the number of non-hydrogen atoms and hydrogen atoms in the chain respectively. The H(added) column lists the number of hydrogen atoms added and optimized by MolProbity. The Clashes column lists the number of clashes within the asymmetric unit, whereas Symm-Clashes lists symmetry related clashes.

Mol	Chain	Non-H	H(model)	H(added)	Clashes	Symm-Clashes
1	A	3148	0	3116	63	0
1	B	3197	0	3169	52	0
1	C	3145	0	3118	45	0
1	D	3128	0	3095	46	0
2	A	40	0	0	5	0
2	B	40	0	0	3	0
3	A	113	0	0	4	0
3	B	91	0	0	7	0
3	C	116	0	0	4	0
3	D	102	0	0	2	0
All	All	13120	0	12498	181	0

The all-atom clashscore is defined as the number of clashes found per 1000 atoms (including hydrogen atoms). The all-atom clashscore for this structure is 7.

The worst 5 of 181 close contacts within the same asymmetric unit are listed below, sorted by their clash magnitude.

Atom-1	Atom-2	Interatomic distance (Å)	Clash overlap (Å)
1:B:197:LYS:CE	1:B:197:LYS:NZ	1.76	1.48
2:A:601:63J:C13	1:D:317:ARG:HH12	1.52	1.22

*Continued on next page...*

*Continued from previous page...*

Atom-1	Atom-2	Interatomic distance (Å)	Clash overlap (Å)
1:B:163:LEU:O	1:B:166:THR:HG22	1.64	0.97
2:A:601:63J:C13	1:D:317:ARG:NH1	2.28	0.96
1:A:163:LEU:O	1:A:166:THR:HG22	1.68	0.93

There are no symmetry-related clashes.

## 5.3 Torsion angles [i](#)

### 5.3.1 Protein backbone [i](#)

In the following table, the Percentiles column shows the percent Ramachandran outliers of the chain as a percentile score with respect to all X-ray entries followed by that with respect to entries of similar resolution.

The Analysed column shows the number of residues for which the backbone conformation was analysed, and the total number of residues.

Mol	Chain	Analysed	Favoured	Allowed	Outliers	Percentiles	
1	A	400/539 (74%)	387 (97%)	10 (2%)	3 (1%)	19	29
1	B	408/539 (76%)	394 (97%)	11 (3%)	3 (1%)	22	32
1	C	400/539 (74%)	384 (96%)	15 (4%)	1 (0%)	41	55
1	D	398/539 (74%)	375 (94%)	17 (4%)	6 (2%)	10	14
All	All	1606/2156 (74%)	1540 (96%)	53 (3%)	13 (1%)	19	29

5 of 13 Ramachandran outliers are listed below:

Mol	Chain	Res	Type
1	A	138	SER
1	A	149	GLU
1	B	150	GLY
1	B	192	GLY
1	D	149	GLU

### 5.3.2 Protein sidechains [i](#)

In the following table, the Percentiles column shows the percent sidechain outliers of the chain as a percentile score with respect to all X-ray entries followed by that with respect to entries of similar resolution.

The Analysed column shows the number of residues for which the sidechain conformation was

analysed, and the total number of residues.

Mol	Chain	Analysed	Rotameric	Outliers	Percentiles	
1	A	349/462 (76%)	342 (98%)	7 (2%)	55	74
1	B	354/462 (77%)	348 (98%)	6 (2%)	60	78
1	C	348/462 (75%)	340 (98%)	8 (2%)	50	70
1	D	347/462 (75%)	340 (98%)	7 (2%)	55	74
All	All	1398/1848 (76%)	1370 (98%)	28 (2%)	55	74

5 of 28 residues with a non-rotameric sidechain are listed below:

Mol	Chain	Res	Type
1	B	412	ASP
1	C	245	LYS
1	D	360	GLN
1	C	206	SER
1	C	225	MET

Some sidechains can be flipped to improve hydrogen bonding and reduce clashes. All (5) such sidechains are listed below:

Mol	Chain	Res	Type
1	A	330	HIS
1	A	455	ASN
1	A	529	ASN
1	B	529	ASN
1	C	241	GLN

### 5.3.3 RNA ⓘ

There are no RNA molecules in this entry.

## 5.4 Non-standard residues in protein, DNA, RNA chains ⓘ

There are no non-standard protein/DNA/RNA residues in this entry.

## 5.5 Carbohydrates ⓘ

There are no carbohydrates in this entry.

## 5.6 Ligand geometry

2 ligands are modelled in this entry.

In the following table, the Counts columns list the number of bonds (or angles) for which Mogul statistics could be retrieved, the number of bonds (or angles) that are observed in the model and the number of bonds (or angles) that are defined in the Chemical Component Dictionary. The Link column lists molecule types, if any, to which the group is linked. The Z score for a bond length (or angle) is the number of standard deviations the observed value is removed from the expected value. A bond length (or angle) with  $|Z| > 2$  is considered an outlier worth inspection. RMSZ is the root-mean-square of all Z scores of the bond lengths (or angles).

Mol	Type	Chain	Res	Link	Bond lengths			Bond angles		
					Counts	RMSZ	# $ Z  > 2$	Counts	RMSZ	# $ Z  > 2$
2	63J	B	601	-	40,43,43	1.36	5 (12%)	45,58,58	1.45	9 (20%)
2	63J	A	601	-	40,43,43	1.91	9 (22%)	45,58,58	3.77	13 (28%)

In the following table, the Chirals column lists the number of chiral outliers, the number of chiral centers analysed, the number of these observed in the model and the number defined in the Chemical Component Dictionary. Similar counts are reported in the Torsion and Rings columns. '-' means no outliers of that kind were identified.

Mol	Type	Chain	Res	Link	Chirals	Torsions	Rings
2	63J	B	601	-	-	9/25/28/28	0/4/4/4
2	63J	A	601	-	-	8/25/28/28	0/4/4/4

The worst 5 of 14 bond length outliers are listed below:

Mol	Chain	Res	Type	Atoms	Z	Observed(Å)	Ideal(Å)
2	A	601	63J	C03-C04	6.09	1.53	1.49
2	A	601	63J	C11-N16	5.85	1.46	1.34
2	B	601	63J	C03-C04	4.53	1.52	1.49
2	B	601	63J	C07-N08	3.58	1.43	1.36
2	A	601	63J	C10-C11	3.55	1.54	1.51

The worst 5 of 22 bond angle outliers are listed below:

Mol	Chain	Res	Type	Atoms	Z	Observed(°)	Ideal(°)
2	A	601	63J	C13-C12-C11	-12.22	103.71	118.93
2	A	601	63J	C14-C15-N16	-11.35	104.89	123.43
2	A	601	63J	C10-C11-N16	-10.08	102.57	116.41
2	A	601	63J	C15-N16-C11	9.32	130.19	117.42
2	A	601	63J	C10-C11-C12	6.33	131.15	121.68

There are no chirality outliers.

5 of 17 torsion outliers are listed below:

Mol	Chain	Res	Type	Atoms
2	A	601	63J	F36-C34-O33-C31
2	A	601	63J	F37-C34-O33-C31
2	B	601	63J	C02-C01-C19-C20
2	A	601	63J	F35-C34-O33-C31
2	B	601	63J	N39-C23-N24-C25

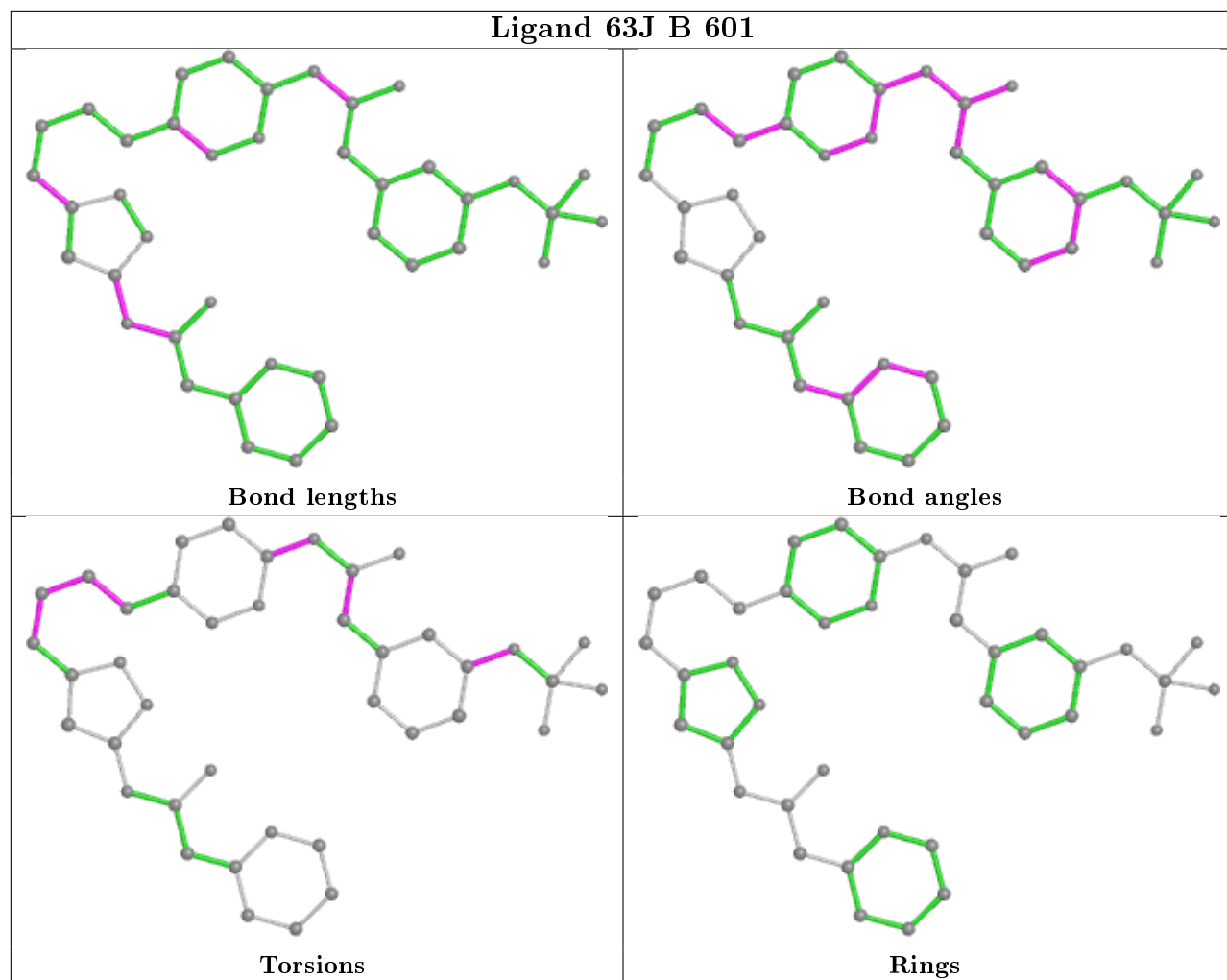
There are no ring outliers.

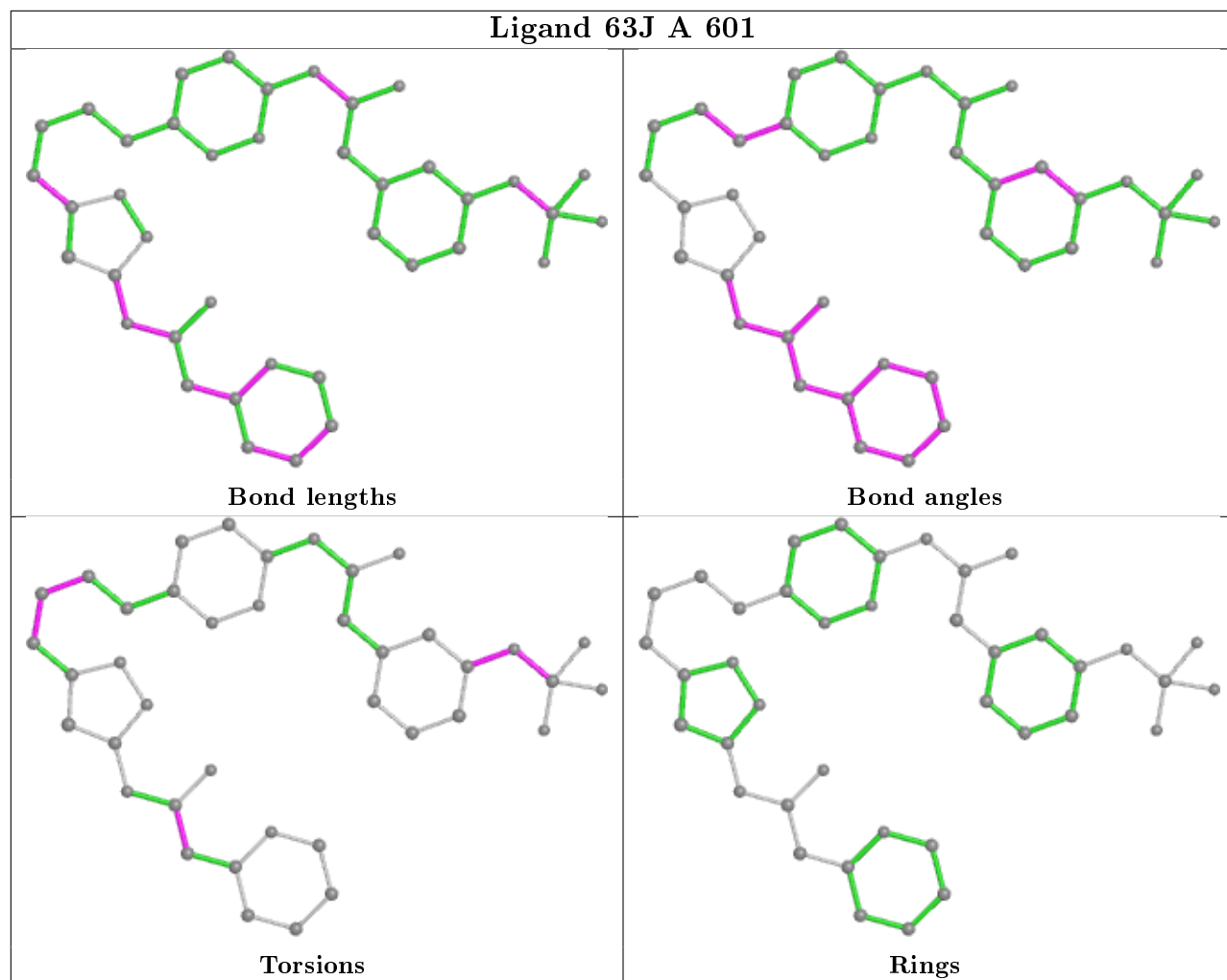
2 monomers are involved in 8 short contacts:

Mol	Chain	Res	Type	Clashes	Symm-Clashes
2	B	601	63J	3	0
2	A	601	63J	5	0

The following is a two-dimensional graphical depiction of Mogul quality analysis of bond lengths, bond angles, torsion angles, and ring geometry for all instances of the Ligand of Interest. In addition, ligands with molecular weight > 250 and outliers as shown on the validation Tables will also be included. For torsion angles, if less than 5% of the Mogul distribution of torsion angles is within 10 degrees of the torsion angle in question, then that torsion angle is considered an outlier. Any bond that is central to one or more torsion angles identified as an outlier by Mogul will be highlighted in the graph. For rings, the root-mean-square deviation (RMSD) between the ring in question and similar rings identified by Mogul is calculated over all ring torsion angles. If the average RMSD is greater than 60 degrees and the minimal RMSD between the ring in question and any Mogul-identified rings is also greater than 60 degrees, then that ring is considered an outlier. The outliers are highlighted in purple. The color gray indicates Mogul did not find sufficient equivalents in the CSD to analyse the geometry.

## Ligand 63J B 601





## 5.7 Other polymers [i](#)

There are no such residues in this entry.

## 5.8 Polymer linkage issues [i](#)

There are no chain breaks in this entry.



## 6 Fit of model and data [i](#)

### 6.1 Protein, DNA and RNA chains [i](#)

In the following table, the column labelled ‘#RSRZ> 2’ contains the number (and percentage) of RSRZ outliers, followed by percent RSRZ outliers for the chain as percentile scores relative to all X-ray entries and entries of similar resolution. The OWAB column contains the minimum, median, 95<sup>th</sup> percentile and maximum values of the occupancy-weighted average B-factor per residue. The column labelled ‘Q< 0.9’ lists the number of (and percentage) of residues with an average occupancy less than 0.9.

Mol	Chain	Analysed	<RSRZ>	#RSRZ>2	OWAB(Å <sup>2</sup> )	Q<0.9
1	A	404/539 (74%)	0.62	40 (9%) 7 6	25, 39, 85, 128	0
1	B	410/539 (76%)	0.68	47 (11%) 4 4	27, 39, 90, 124	0
1	C	404/539 (74%)	0.60	44 (10%) 5 5	26, 39, 84, 126	0
1	D	402/539 (74%)	0.59	38 (9%) 8 7	27, 39, 85, 112	0
All	All	1620/2156 (75%)	0.62	169 (10%) 6 6	25, 39, 87, 128	0

The worst 5 of 169 RSRZ outliers are listed below:

Mol	Chain	Res	Type	RSRZ
1	A	318	PHE	9.1
1	A	317	ARG	8.0
1	B	318	PHE	7.9
1	A	256	PHE	7.6
1	B	144	PHE	7.0

### 6.2 Non-standard residues in protein, DNA, RNA chains [i](#)

There are no non-standard protein/DNA/RNA residues in this entry.

### 6.3 Carbohydrates [i](#)

There are no carbohydrates in this entry.

### 6.4 Ligands [i](#)

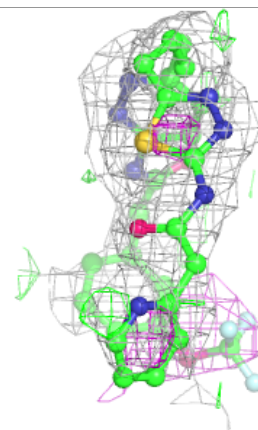
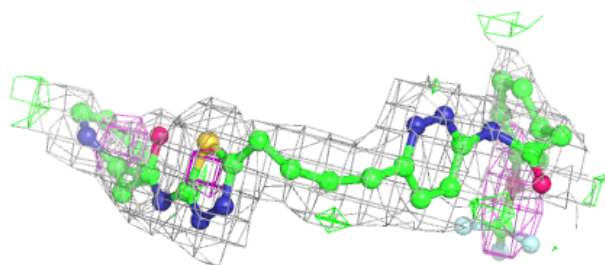
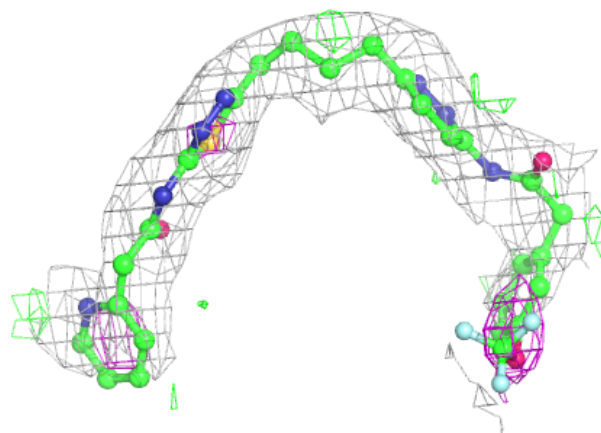
In the following table, the Atoms column lists the number of modelled atoms in the group and the number defined in the chemical component dictionary. The B-factors column lists the minimum, median, 95<sup>th</sup> percentile and maximum values of B factors of atoms in the group. The column labelled ‘Q< 0.9’ lists the number of atoms with occupancy less than 0.9.

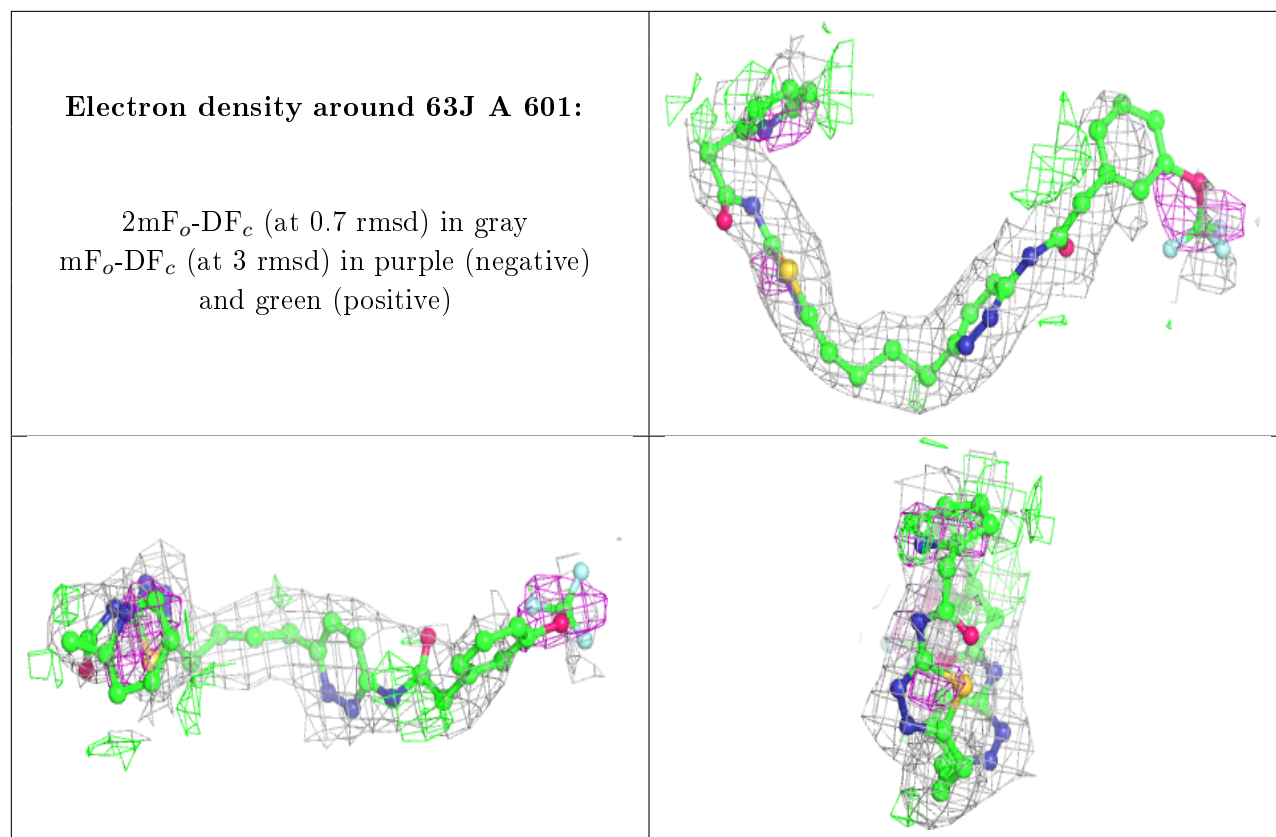
Mol	Type	Chain	Res	Atoms	RSCC	RSR	B-factors( $\text{\AA}^2$ )	Q<0.9
2	63J	B	601	40/40	0.76	0.26	39,60,140,146	0
2	63J	A	601	40/40	0.76	0.29	38,72,112,115	0

The following is a graphical depiction of the model fit to experimental electron density of all instances of the Ligand of Interest. In addition, ligands with molecular weight > 250 and outliers as shown on the geometry validation Tables will also be included. Each fit is shown from different orientation to approximate a three-dimensional view.

**Electron density around 63J B 601:**

2mF<sub>o</sub>-DF<sub>c</sub> (at 0.7 rmsd) in gray  
mF<sub>o</sub>-DF<sub>c</sub> (at 3 rmsd) in purple (negative)  
and green (positive)





## 6.5 Other polymers [i](#)

There are no such residues in this entry.