



# Full wwPDB X-ray Structure Validation Report ⓘ

May 14, 2020 – 08:53 am BST

PDB ID : 3HML  
Title : Crystal Structure of PqqC Active Site Mutant H154S in Complex with PQQ  
Authors : Puehringer, S.; Schwarzenbacher, R.  
Deposited on : 2009-05-29  
Resolution : 2.35 Å(reported)

This is a Full wwPDB X-ray Structure Validation Report for a publicly released PDB entry.

We welcome your comments at [validation@mail.wwpdb.org](mailto:validation@mail.wwpdb.org)

A user guide is available at

<https://www.wwpdb.org/validation/2017/XrayValidationReportHelp>

with specific help available everywhere you see the ⓘ symbol.

---

The following versions of software and data (see [references ⓘ](#)) were used in the production of this report:

MolProbity : 4.02b-467  
Mogul : 1.8.5 (274361), CSD as541be (2020)  
Xtriage (Phenix) : 1.13  
EDS : 2.11  
buster-report : 1.1.7 (2018)  
Percentile statistics : 20191225.v01 (using entries in the PDB archive December 25th 2019)  
Refmac : 5.8.0158  
CCP4 : 7.0.044 (Gargrove)  
Ideal geometry (proteins) : Engh & Huber (2001)  
Ideal geometry (DNA, RNA) : Parkinson et al. (1996)  
Validation Pipeline (wwPDB-VP) : 2.11

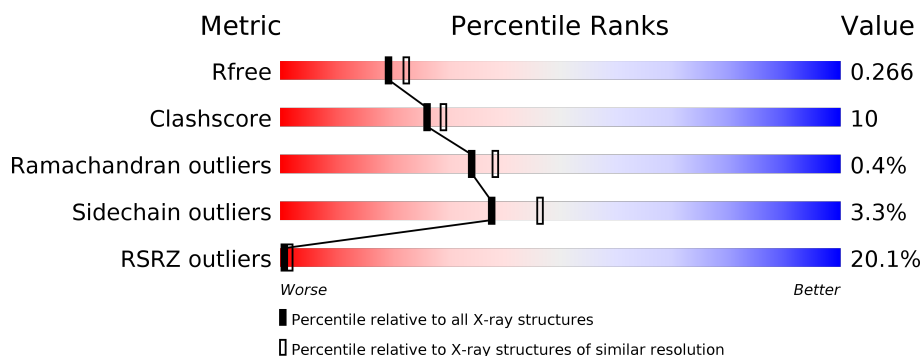
# 1 Overall quality at a glance

The following experimental techniques were used to determine the structure:

## *X-RAY DIFFRACTION*

The reported resolution of this entry is 2.35 Å.

Percentile scores (ranging between 0-100) for global validation metrics of the entry are shown in the following graphic. The table shows the number of entries on which the scores are based.



Metric	Whole archive (#Entries)	Similar resolution (#Entries, resolution range(Å))
$R_{free}$	130704	1164 (2.36-2.36)
Clashscore	141614	1232 (2.36-2.36)
Ramachandran outliers	138981	1211 (2.36-2.36)
Sidechain outliers	138945	1212 (2.36-2.36)
RSRZ outliers	127900	1150 (2.36-2.36)

The table below summarises the geometric issues observed across the polymeric chains and their fit to the electron density. The red, orange, yellow and green segments on the lower bar indicate the fraction of residues that contain outliers for  $\geq 3$ , 2, 1 and 0 types of geometric quality criteria respectively. A grey segment represents the fraction of residues that are not modelled. The numeric value for each fraction is indicated below the corresponding segment, with a dot representing fractions  $\leq 5\%$ . The upper red bar (where present) indicates the fraction of residues that have poor fit to the electron density. The numeric value is given above the bar.

Mol	Chain	Length	Quality of chain
1	A	258	<div> <div>14%</div> <div> <div></div> <div>75%</div> <div>14%</div> <div>•</div> <div>8%</div> </div> </div>
1	B	258	<div> <div>23%</div> <div> <div></div> <div>76%</div> <div>14%</div> <div>•</div> <div>9%</div> </div> </div>

## 2 Entry composition

There are 3 unique types of molecules in this entry. The entry contains 3982 atoms, of which 0 are hydrogens and 0 are deuteriums.

In the tables below, the ZeroOcc column contains the number of atoms modelled with zero occupancy, the AltConf column contains the number of residues with at least one atom in alternate conformation and the Trace column contains the number of residues modelled with at most 2 atoms.

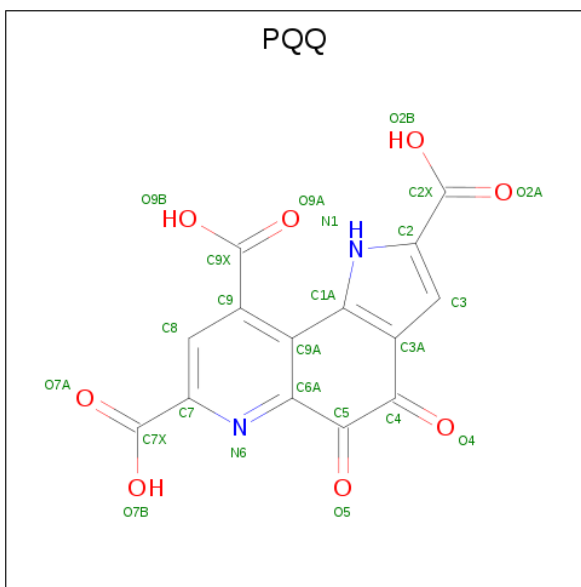
- Molecule 1 is a protein called Pyrroloquinoline-quinone synthase.

Mol	Chain	Residues	Atoms					ZeroOcc	AltConf	Trace
1	A	237	Total	C	N	O	S	0	2	0
			1947	1243	348	346	10			
1	B	236	Total	C	N	O	S	0	1	0
			1930	1231	342	347	10			

There are 16 discrepancies between the modelled and reference sequences:

Chain	Residue	Modelled	Actual	Comment	Reference
A	154	SER	HIS	ENGINEERED MUTATION	UNP A6T9H1
A	252	LEU	-	EXPRESSION TAG	UNP A6T9H1
A	253	GLU	-	EXPRESSION TAG	UNP A6T9H1
A	254	HIS	-	EXPRESSION TAG	UNP A6T9H1
A	255	HIS	-	EXPRESSION TAG	UNP A6T9H1
A	256	HIS	-	EXPRESSION TAG	UNP A6T9H1
A	257	HIS	-	EXPRESSION TAG	UNP A6T9H1
A	258	HIS	-	EXPRESSION TAG	UNP A6T9H1
B	154	SER	HIS	ENGINEERED MUTATION	UNP A6T9H1
B	252	LEU	-	EXPRESSION TAG	UNP A6T9H1
B	253	GLU	-	EXPRESSION TAG	UNP A6T9H1
B	254	HIS	-	EXPRESSION TAG	UNP A6T9H1
B	255	HIS	-	EXPRESSION TAG	UNP A6T9H1
B	256	HIS	-	EXPRESSION TAG	UNP A6T9H1
B	257	HIS	-	EXPRESSION TAG	UNP A6T9H1
B	258	HIS	-	EXPRESSION TAG	UNP A6T9H1

- Molecule 2 is PYRROLOQUINOLINE QUINONE (three-letter code: PQQ) (formula: C<sub>14</sub>H<sub>6</sub>N<sub>2</sub>O<sub>8</sub>).



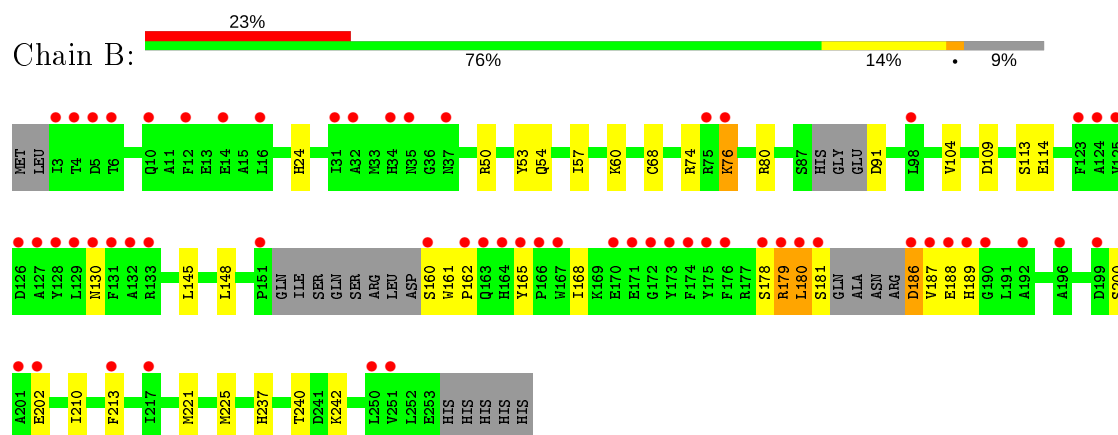
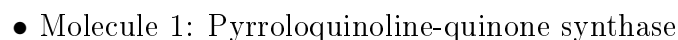
Mol	Chain	Residues	Atoms				ZeroOcc	AltConf
2	A	1	Total	C	N	O	0	0
			24	14	2	8		
2	B	1	Total	C	N	O	0	0
			24	14	2	8		

- Molecule 3 is water.

Mol	Chain	Residues	Atoms		ZeroOcc	AltConf
3	A	32	Total	O	0	0
			32	32		
3	B	25	Total	O	0	0
			25	25		



- Molecule 1: Pyrroloquinoline-quinone synthase



## 4 Data and refinement statistics

Property	Value	Source
Space group	P 21 21 2	Depositor
Cell constants a, b, c, $\alpha$ , $\beta$ , $\gamma$	75.06 Å 118.29 Å 68.04 Å 90.00° 90.00° 90.00°	Depositor
Resolution (Å)	38.37 – 2.35 39.43 – 2.35	Depositor EDS
% Data completeness (in resolution range)	99.6 (38.37-2.35) 99.6 (39.43-2.35)	Depositor EDS
$R_{merge}$	0.11	Depositor
$R_{sym}$	0.10	Depositor
$\langle I/\sigma(I) \rangle$ <sup>1</sup>	1.64 (at 2.34 Å)	Xtriage
Refinement program	REFMAC	Depositor
R, $R_{free}$	0.212 , 0.261 0.234 , 0.266	Depositor DCC
$R_{free}$ test set	1310 reflections (5.07%)	wwPDB-VP
Wilson B-factor (Å <sup>2</sup> )	50.9	Xtriage
Anisotropy	0.061	Xtriage
Bulk solvent $k_{sol}$ (e/Å <sup>3</sup> ), $B_{sol}$ (Å <sup>2</sup> )	0.37 , 36.2	EDS
L-test for twinning <sup>2</sup>	$\langle  L  \rangle = 0.50$ , $\langle L^2 \rangle = 0.33$	Xtriage
Estimated twinning fraction	No twinning to report.	Xtriage
$F_o, F_c$ correlation	0.94	EDS
Total number of atoms	3982	wwPDB-VP
Average B, all atoms (Å <sup>2</sup> )	46.0	wwPDB-VP

Xtriage's analysis on translational NCS is as follows: *The largest off-origin peak in the Patterson function is 5.70% of the height of the origin peak. No significant pseudotranslation is detected.*

<sup>1</sup>Intensities estimated from amplitudes.

<sup>2</sup>Theoretical values of  $\langle |L| \rangle$ ,  $\langle L^2 \rangle$  for acentric reflections are 0.5, 0.333 respectively for untwinned datasets, and 0.375, 0.2 for perfectly twinned datasets.

## 5 Model quality [i](#)

### 5.1 Standard geometry [i](#)

Bond lengths and bond angles in the following residue types are not validated in this section: PQQ

The Z score for a bond length (or angle) is the number of standard deviations the observed value is removed from the expected value. A bond length (or angle) with  $|Z| > 5$  is considered an outlier worth inspection. RMSZ is the root-mean-square of all Z scores of the bond lengths (or angles).

Mol	Chain	Bond lengths		Bond angles	
		RMSZ	$\# Z  > 5$	RMSZ	$\# Z  > 5$
1	A	0.93	0/2007	0.84	1/2722 (0.0%)
1	B	0.86	0/1986	0.78	2/2694 (0.1%)
All	All	0.89	0/3993	0.81	3/5416 (0.1%)

There are no bond length outliers.

All (3) bond angle outliers are listed below:

Mol	Chain	Res	Type	Atoms	Z	Observed(°)	Ideal(°)
1	A	193	LEU	CA-CB-CG	6.76	130.86	115.30
1	B	145	LEU	CA-CB-CG	5.56	128.09	115.30
1	B	148	LEU	CA-CB-CG	5.21	127.28	115.30

There are no chirality outliers.

There are no planarity outliers.

### 5.2 Too-close contacts [i](#)

In the following table, the Non-H and H(model) columns list the number of non-hydrogen atoms and hydrogen atoms in the chain respectively. The H(added) column lists the number of hydrogen atoms added and optimized by MolProbity. The Clashes column lists the number of clashes within the asymmetric unit, whereas Symm-Clashes lists symmetry related clashes.

Mol	Chain	Non-H	H(model)	H(added)	Clashes	Symm-Clashes
1	A	1947	0	1879	39	0
1	B	1930	0	1854	41	0
2	A	24	0	3	0	0
2	B	24	0	3	3	0
3	A	32	0	0	3	0
3	B	25	0	0	3	0

*Continued on next page...*

*Continued from previous page...*

Mol	Chain	Non-H	H(model)	H(added)	Clashes	Symm-Clashes
All	All	3982	0	3739	80	0

The all-atom clashscore is defined as the number of clashes found per 1000 atoms (including hydrogen atoms). The all-atom clashscore for this structure is 10.

All (80) close contacts within the same asymmetric unit are listed below, sorted by their clash magnitude.

Atom-1	Atom-2	Interatomic distance (Å)	Clash overlap (Å)
1:A:179:ARG:O	1:A:179:ARG:HD3	1.33	1.21
1:B:50:ARG:HH21	1:B:54:GLN:HE22	1.16	0.89
1:A:179:ARG:C	1:A:179:ARG:HD3	1.93	0.87
1:A:46:TRP:HD1	1:A:225:MET:HE1	1.41	0.84
1:B:50:ARG:HH22	2:B:259:PQQ:C3	1.92	0.82
1:B:161:TRP:N	1:B:162:PRO:HD2	1.96	0.80
1:B:240:THR:HG22	1:B:242:LYS:H	1.48	0.78
1:A:30[B]:HIS:ND1	1:A:222:LEU:HD11	2.02	0.74
1:B:187:VAL:C	1:B:189:HIS:H	1.92	0.72
1:A:50:ARG:HE	1:A:54:GLN:HE21	1.38	0.72
1:B:50:ARG:HH21	1:B:54:GLN:NE2	1.88	0.71
1:A:180:LEU:O	1:A:181:SER:HB2	1.88	0.71
1:B:60:LYS:HE3	3:B:260:HOH:O	1.92	0.69
1:A:134:ARG:HH11	1:A:134:ARG:HG2	1.58	0.68
1:A:29:TYR:CE2	1:A:225:MET:HE3	2.29	0.68
1:B:179:ARG:NH1	1:B:179:ARG:O	2.30	0.65
1:B:179:ARG:O	1:B:181:SER:N	2.29	0.64
1:A:13:GLU:HG3	1:A:191:LEU:HD11	1.80	0.64
1:B:113:SER:O	1:B:114[A]:GLU:HB2	1.97	0.63
1:A:222:LEU:HD23	1:A:225:MET:CE	2.28	0.63
1:B:179:ARG:HG3	1:B:179:ARG:NH1	2.14	0.62
1:A:50:ARG:O	1:A:54:GLN:HG2	2.01	0.61
1:B:50:ARG:NH2	1:B:54:GLN:HE22	1.95	0.59
1:A:86:GLY:HA3	1:A:91:ASP:HA	1.85	0.59
1:B:179:ARG:HG3	1:B:179:ARG:HH11	1.69	0.57
1:A:237:HIS:HE1	3:A:270:HOH:O	1.88	0.56
1:A:30[B]:HIS:CE1	1:A:222:LEU:HD11	2.40	0.56
1:B:179:ARG:HH11	1:B:179:ARG:CG	2.18	0.56
1:B:109:ASP:O	1:B:113:SER:HB3	2.05	0.56
1:B:187:VAL:C	1:B:189:HIS:N	2.59	0.56
1:B:50:ARG:HE	1:B:54:GLN:NE2	2.04	0.55
1:A:180:LEU:O	1:A:181:SER:CB	2.53	0.55
1:A:128:TYR:HB2	1:A:217:ILE:HD13	1.87	0.55

*Continued on next page...*



*Continued from previous page...*

Atom-1	Atom-2	Interatomic distance (Å)	Clash overlap (Å)
1:B:50:ARG:HE	1:B:54:GLN:HE21	1.54	0.55
1:A:24:HIS:HD2	3:A:262:HOH:O	1.90	0.54
1:B:50:ARG:NH2	1:B:54:GLN:NE2	2.54	0.54
1:A:222:LEU:HD23	1:A:225:MET:HE1	1.89	0.53
1:A:95:GLU:CD	1:A:108:ARG:HH22	2.12	0.52
1:B:50:ARG:NH2	2:B:259:PQQ:C3	2.69	0.52
1:B:210:ILE:O	1:B:213:PHE:HB3	2.10	0.51
1:B:180:LEU:O	1:B:181:SER:O	2.30	0.50
2:B:259:PQQ:N1	2:B:259:PQQ:O9B	2.45	0.50
1:A:222:LEU:HD23	1:A:225:MET:HE2	1.95	0.49
1:B:80:ARG:NH2	1:B:186:ASP:O	2.46	0.49
1:B:179:ARG:HH11	1:B:179:ARG:C	2.16	0.48
1:B:161:TRP:N	1:B:162:PRO:CD	2.71	0.48
1:B:68:CYS:O	1:B:74:ARG:HD3	2.14	0.48
1:A:170:GLU:CD	3:A:291:HOH:O	2.51	0.47
1:B:50:ARG:NE	1:B:54:GLN:HE21	2.12	0.47
1:B:237:HIS:HE1	3:B:261:HOH:O	1.97	0.47
1:A:177:ARG:O	1:A:180:LEU:HB3	2.14	0.47
1:A:46:TRP:CD1	1:A:225:MET:HE1	2.33	0.47
1:A:98:LEU:HA	1:A:111:LEU:HD12	1.97	0.47
1:B:76:LYS:HB2	1:B:76:LYS:HE2	1.42	0.47
1:B:200:SER:OG	1:B:202:GLU:HB3	2.16	0.46
1:A:29:TYR:CE2	1:A:225:MET:CE	2.98	0.46
1:A:95:GLU:OE2	1:A:108:ARG:NH2	2.46	0.46
1:A:129:LEU:O	1:A:133[A]:ARG:HG3	2.14	0.46
1:A:145:LEU:HD21	1:A:190:GLY:C	2.36	0.45
1:B:221:MET:O	1:B:225:MET:HG3	2.16	0.45
1:B:165:TYR:HB2	1:B:168:ILE:HD12	1.99	0.45
1:A:130:ASN:HD22	1:B:130:ASN:HD22	1.65	0.45
1:B:104:VAL:HG12	1:B:168:ILE:HG12	1.99	0.45
1:A:60:LYS:HD2	1:A:60:LYS:C	2.37	0.45
1:B:160:SER:C	1:B:162:PRO:HD2	2.38	0.45
1:B:50:ARG:NE	1:B:54:GLN:NE2	2.64	0.44
1:A:50:ARG:HH21	1:A:54:GLN:NE2	2.16	0.44
1:B:50:ARG:O	1:B:54:GLN:HG2	2.19	0.42
1:B:187:VAL:O	1:B:189:HIS:N	2.52	0.42
1:B:53:TYR:CE2	1:B:57:ILE:HD11	2.55	0.42
1:A:99:ARG:HB3	1:A:99:ARG:HE	1.51	0.42
1:A:178:SER:C	1:A:180:LEU:N	2.74	0.41
1:A:91:ASP:HB2	1:A:92:GLY:HA3	2.02	0.41
1:A:76:LYS:HZ1	1:A:189:HIS:HB2	1.85	0.41

*Continued on next page...*

*Continued from previous page...*

Atom-1	Atom-2	Interatomic distance (Å)	Clash overlap (Å)
1:A:43:ILE:O	1:A:47:VAL:HG23	2.21	0.41
1:B:60:LYS:CE	3:B:260:HOH:O	2.61	0.41
1:A:225:MET:HE2	1:A:225:MET:HB2	1.84	0.41
1:B:179:ARG:HD2	1:B:179:ARG:HA	1.50	0.40
1:A:161:TRP:N	1:A:162:PRO:HD2	2.37	0.40
1:A:48:ALA:HA	1:A:111:LEU:CD2	2.52	0.40

There are no symmetry-related clashes.

## 5.3 Torsion angles [i](#)

### 5.3.1 Protein backbone [i](#)

In the following table, the Percentiles column shows the percent Ramachandran outliers of the chain as a percentile score with respect to all X-ray entries followed by that with respect to entries of similar resolution.

The Analysed column shows the number of residues for which the backbone conformation was analysed, and the total number of residues.

Mol	Chain	Analysed	Favoured	Allowed	Outliers	Percentiles	
1	A	231/258 (90%)	224 (97%)	7 (3%)	0	100	100
1	B	229/258 (89%)	217 (95%)	10 (4%)	2 (1%)	17	17
All	All	460/516 (89%)	441 (96%)	17 (4%)	2 (0%)	34	38

All (2) Ramachandran outliers are listed below:

Mol	Chain	Res	Type
1	B	180	LEU
1	B	188	GLU

### 5.3.2 Protein sidechains [i](#)

In the following table, the Percentiles column shows the percent sidechain outliers of the chain as a percentile score with respect to all X-ray entries followed by that with respect to entries of similar resolution.

The Analysed column shows the number of residues for which the sidechain conformation was analysed, and the total number of residues.

Mol	Chain	Analysed	Rotameric	Outliers	Percentiles	
1	A	200/217 (92%)	193 (96%)	7 (4%)	36	44
1	B	198/217 (91%)	192 (97%)	6 (3%)	41	50
All	All	398/434 (92%)	385 (97%)	13 (3%)	38	46

All (13) residues with a non-rotameric sidechain are listed below:

Mol	Chain	Res	Type
1	A	24	HIS
1	A	60	LYS
1	A	134	ARG
1	A	179	ARG
1	A	180	LEU
1	A	187	VAL
1	A	193	LEU
1	B	24	HIS
1	B	76	LYS
1	B	91	ASP
1	B	178	SER
1	B	179	ARG
1	B	186	ASP

Some sidechains can be flipped to improve hydrogen bonding and reduce clashes. All (8) such sidechains are listed below:

Mol	Chain	Res	Type
1	A	24	HIS
1	A	54	GLN
1	A	130	ASN
1	A	189	HIS
1	A	237	HIS
1	B	24	HIS
1	B	54	GLN
1	B	116	HIS

### 5.3.3 RNA ⓘ

There are no RNA molecules in this entry.

## 5.4 Non-standard residues in protein, DNA, RNA chains ⓘ

There are no non-standard protein/DNA/RNA residues in this entry.

## 5.5 Carbohydrates [i](#)

There are no carbohydrates in this entry.

## 5.6 Ligand geometry [i](#)

2 ligands are modelled in this entry.

In the following table, the Counts columns list the number of bonds (or angles) for which Mogul statistics could be retrieved, the number of bonds (or angles) that are observed in the model and the number of bonds (or angles) that are defined in the Chemical Component Dictionary. The Link column lists molecule types, if any, to which the group is linked. The Z score for a bond length (or angle) is the number of standard deviations the observed value is removed from the expected value. A bond length (or angle) with  $|Z| > 2$  is considered an outlier worth inspection. RMSZ is the root-mean-square of all Z scores of the bond lengths (or angles).

Mol	Type	Chain	Res	Link	Bond lengths			Bond angles		
					Counts	RMSZ	$\# Z  > 2$	Counts	RMSZ	$\# Z  > 2$
2	PQQ	B	259	-	18,26,26	3.28	8 (44%)	14,40,40	2.31	3 (21%)
2	PQQ	A	259	-	18,26,26	3.06	5 (27%)	14,40,40	1.87	3 (21%)

In the following table, the Chirals column lists the number of chiral outliers, the number of chiral centers analysed, the number of these observed in the model and the number defined in the Chemical Component Dictionary. Similar counts are reported in the Torsion and Rings columns. '-' means no outliers of that kind were identified.

Mol	Type	Chain	Res	Link	Chirals	Torsions	Rings
2	PQQ	B	259	-	-	0/0/28/28	0/3/3/3
2	PQQ	A	259	-	-	0/0/28/28	0/3/3/3

All (13) bond length outliers are listed below:

Mol	Chain	Res	Type	Atoms	Z	Observed(Å)	Ideal(Å)
2	B	259	PQQ	C9A-C6A	9.96	1.51	1.40
2	A	259	PQQ	C9A-C6A	7.57	1.49	1.40
2	A	259	PQQ	C9A-C1A	-5.63	1.39	1.48
2	A	259	PQQ	C3A-C1A	5.33	1.48	1.40
2	B	259	PQQ	C9A-C1A	-5.27	1.39	1.48
2	A	259	PQQ	C9-C9A	5.24	1.51	1.41
2	B	259	PQQ	C9-C9X	4.02	1.51	1.47
2	B	259	PQQ	C3A-C1A	3.94	1.46	1.40
2	B	259	PQQ	C9-C9A	3.67	1.48	1.41
2	B	259	PQQ	C6A-C5	2.34	1.53	1.50
2	B	259	PQQ	O4-C4	2.22	1.27	1.23

*Continued on next page...*

*Continued from previous page...*

Mol	Chain	Res	Type	Atoms	Z	Observed(Å)	Ideal(Å)
2	A	259	PQQ	C9-C9X	2.17	1.49	1.47
2	B	259	PQQ	C6A-N6	2.12	1.39	1.34

All (6) bond angle outliers are listed below:

Mol	Chain	Res	Type	Atoms	Z	Observed(°)	Ideal(°)
2	A	259	PQQ	C6A-N6-C7	4.47	124.86	118.19
2	B	259	PQQ	C9-C8-C7	4.45	125.58	120.41
2	B	259	PQQ	C5-C6A-N6	4.32	122.28	114.96
2	B	259	PQQ	C9A-C1A-N1	3.59	131.75	124.25
2	A	259	PQQ	C5-C6A-N6	3.47	120.84	114.96
2	A	259	PQQ	O5-C5-C6A	2.36	124.34	121.84

There are no chirality outliers.

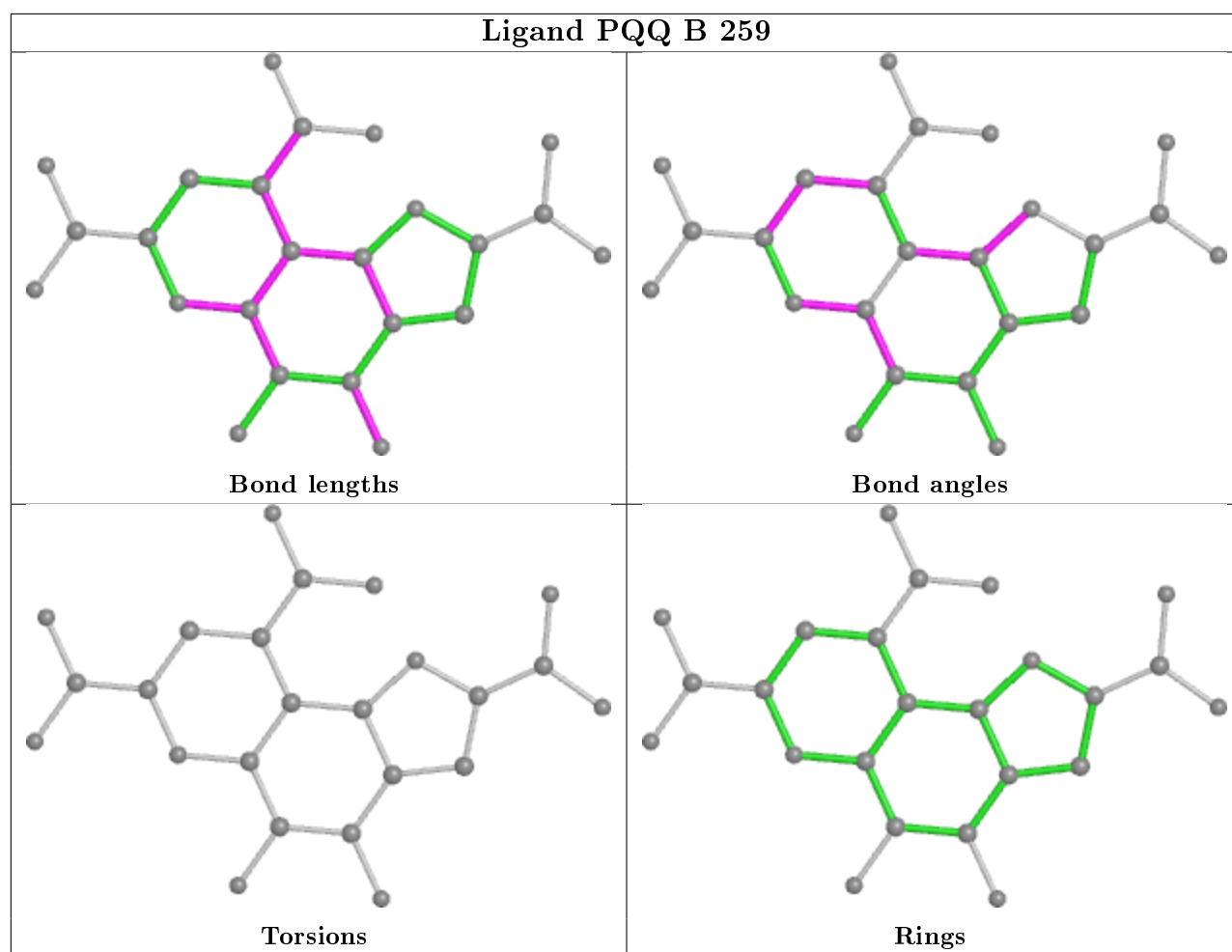
There are no torsion outliers.

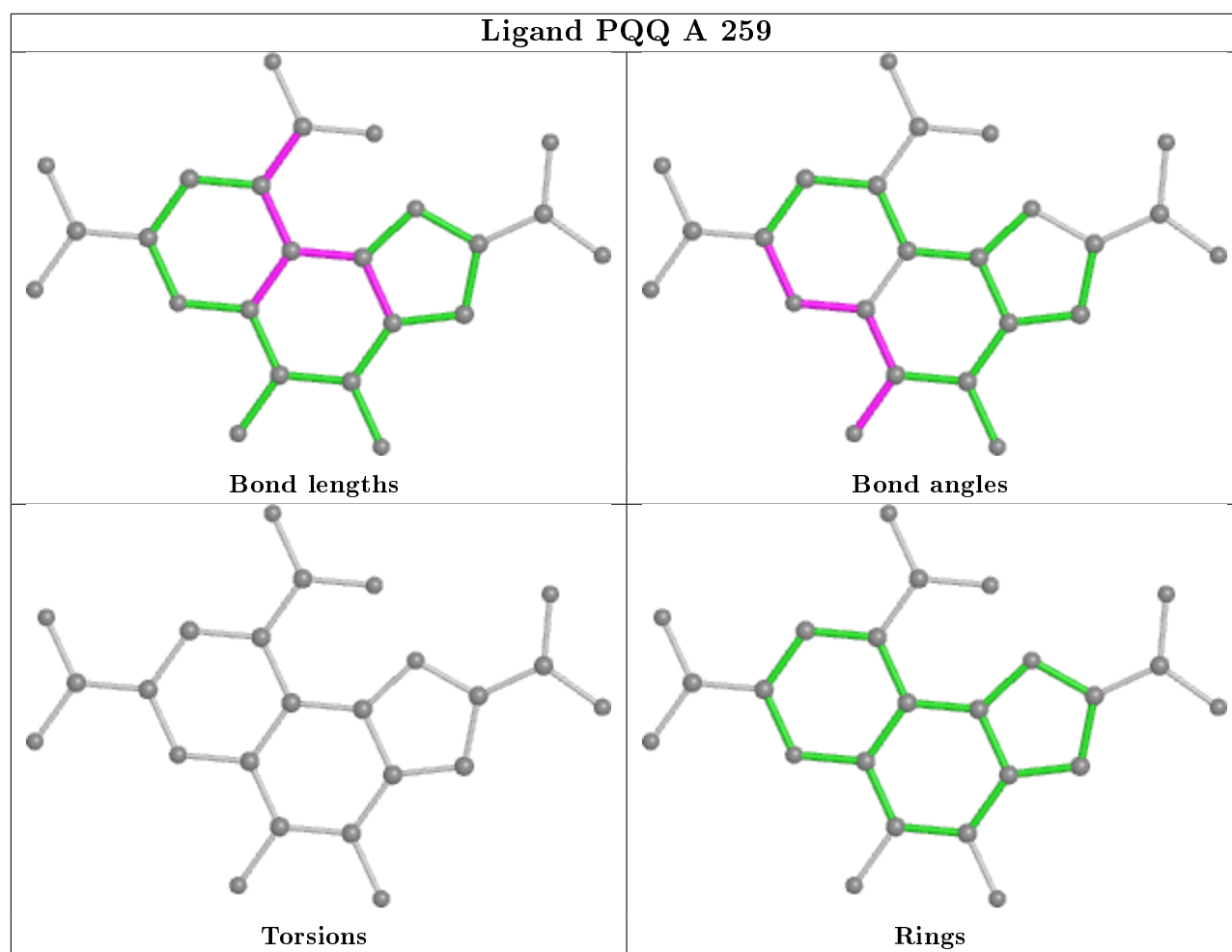
There are no ring outliers.

1 monomer is involved in 3 short contacts:

Mol	Chain	Res	Type	Clashes	Symm-Clashes
2	B	259	PQQ	3	0

The following is a two-dimensional graphical depiction of Mogul quality analysis of bond lengths, bond angles, torsion angles, and ring geometry for all instances of the Ligand of Interest. In addition, ligands with molecular weight > 250 and outliers as shown on the validation Tables will also be included. For torsion angles, if less than 5% of the Mogul distribution of torsion angles is within 10 degrees of the torsion angle in question, then that torsion angle is considered an outlier. Any bond that is central to one or more torsion angles identified as an outlier by Mogul will be highlighted in the graph. For rings, the root-mean-square deviation (RMSD) between the ring in question and similar rings identified by Mogul is calculated over all ring torsion angles. If the average RMSD is greater than 60 degrees and the minimal RMSD between the ring in question and any Mogul-identified rings is also greater than 60 degrees, then that ring is considered an outlier. The outliers are highlighted in purple. The color gray indicates Mogul did not find sufficient equivalents in the CSD to analyse the geometry.





## 5.7 Other polymers [i](#)

There are no such residues in this entry.

## 5.8 Polymer linkage issues [i](#)

There are no chain breaks in this entry.

## 6 Fit of model and data

### 6.1 Protein, DNA and RNA chains

In the following table, the column labelled ‘#RSRZ> 2’ contains the number (and percentage) of RSRZ outliers, followed by percent RSRZ outliers for the chain as percentile scores relative to all X-ray entries and entries of similar resolution. The OWAB column contains the minimum, median, 95<sup>th</sup> percentile and maximum values of the occupancy-weighted average B-factor per residue. The column labelled ‘Q< 0.9’ lists the number of (and percentage) of residues with an average occupancy less than 0.9.

Mol	Chain	Analysed	<RSRZ>	#RSRZ>2	OWAB(Å <sup>2</sup> )	Q<0.9
1	A	237/258 (91%)	0.81	35 (14%) <b>2</b> <b>3</b>	31, 42, 59, 78	0
1	B	236/258 (91%)	1.11	60 (25%) <b>0</b> <b>1</b>	35, 45, 69, 85	0
All	All	473/516 (91%)	0.96	95 (20%) <b>1</b> <b>2</b>	31, 44, 65, 85	0

All (95) RSRZ outliers are listed below:

Mol	Chain	Res	Type	RSRZ
1	B	179	ARG	6.3
1	A	133[A]	ARG	5.9
1	B	188	GLU	4.9
1	B	163	GLN	4.9
1	B	174	PHE	4.9
1	A	180	LEU	4.6
1	B	3	ILE	4.6
1	A	125	VAL	4.2
1	B	180	LEU	3.9
1	B	175	TYR	3.9
1	A	174	PHE	3.8
1	B	127	ALA	3.8
1	A	127	ALA	3.8
1	A	217	ILE	3.7
1	B	4	THR	3.7
1	A	178	SER	3.6
1	B	171	GLU	3.6
1	B	166	PRO	3.6
1	A	129	LEU	3.6
1	B	164	HIS	3.6
1	B	181	SER	3.6
1	B	129	LEU	3.6
1	A	179	ARG	3.5
1	B	34	HIS	3.3

*Continued on next page...*



*Continued from previous page...*

Mol	Chain	Res	Type	RSRZ
1	B	202	GLU	3.3
1	A	132	ALA	3.2
1	B	190	GLY	3.2
1	B	251	VAL	3.2
1	A	134	ARG	3.2
1	B	31	ILE	3.1
1	A	131	PHE	3.1
1	A	10	GLN	3.1
1	A	128	TYR	3.1
1	A	151	PRO	3.0
1	A	135	ALA	3.0
1	B	12	PHE	3.0
1	A	87	SER	3.0
1	B	125	VAL	2.9
1	A	124	ALA	2.9
1	B	172	GLY	2.9
1	B	250	LEU	2.9
1	B	123	PHE	2.9
1	B	124	ALA	2.9
1	A	126	ASP	2.8
1	A	121	VAL	2.8
1	B	5	ASP	2.8
1	A	213	PHE	2.7
1	B	173	TYR	2.7
1	A	188	GLU	2.7
1	B	199	ASP	2.7
1	B	130	ASN	2.7
1	A	91	ASP	2.6
1	A	9	PRO	2.6
1	B	10	GLN	2.6
1	A	120	GLY	2.6
1	A	63	ALA	2.6
1	A	123	PHE	2.5
1	A	130	ASN	2.5
1	B	170	GLU	2.5
1	B	133	ARG	2.5
1	B	217	ILE	2.5
1	B	35	ASN	2.5
1	B	192	ALA	2.4
1	A	202	GLU	2.4
1	B	16	LEU	2.4
1	A	218	LEU	2.4

*Continued on next page...*

*Continued from previous page...*

Mol	Chain	Res	Type	RSRZ
1	B	75	ARG	2.4
1	B	176	PHE	2.4
1	B	196	ALA	2.4
1	B	178	SER	2.3
1	A	251	VAL	2.3
1	B	151	PRO	2.2
1	A	189	HIS	2.2
1	B	167	TRP	2.2
1	B	14	GLU	2.2
1	B	126	ASP	2.2
1	B	131	PHE	2.2
1	B	128	TYR	2.2
1	B	187	VAL	2.2
1	A	252	LEU	2.2
1	B	186	ASP	2.1
1	B	165	TYR	2.1
1	A	66	ALA	2.1
1	B	162	PRO	2.1
1	B	32	ALA	2.1
1	B	213	PHE	2.1
1	B	98	LEU	2.1
1	B	6	THR	2.1
1	B	37	ASN	2.1
1	B	76	LYS	2.1
1	B	189	HIS	2.0
1	B	132	ALA	2.0
1	B	201	ALA	2.0
1	B	160	SER	2.0
1	A	175	TYR	2.0

## 6.2 Non-standard residues in protein, DNA, RNA chains ⓘ

There are no non-standard protein/DNA/RNA residues in this entry.

## 6.3 Carbohydrates ⓘ

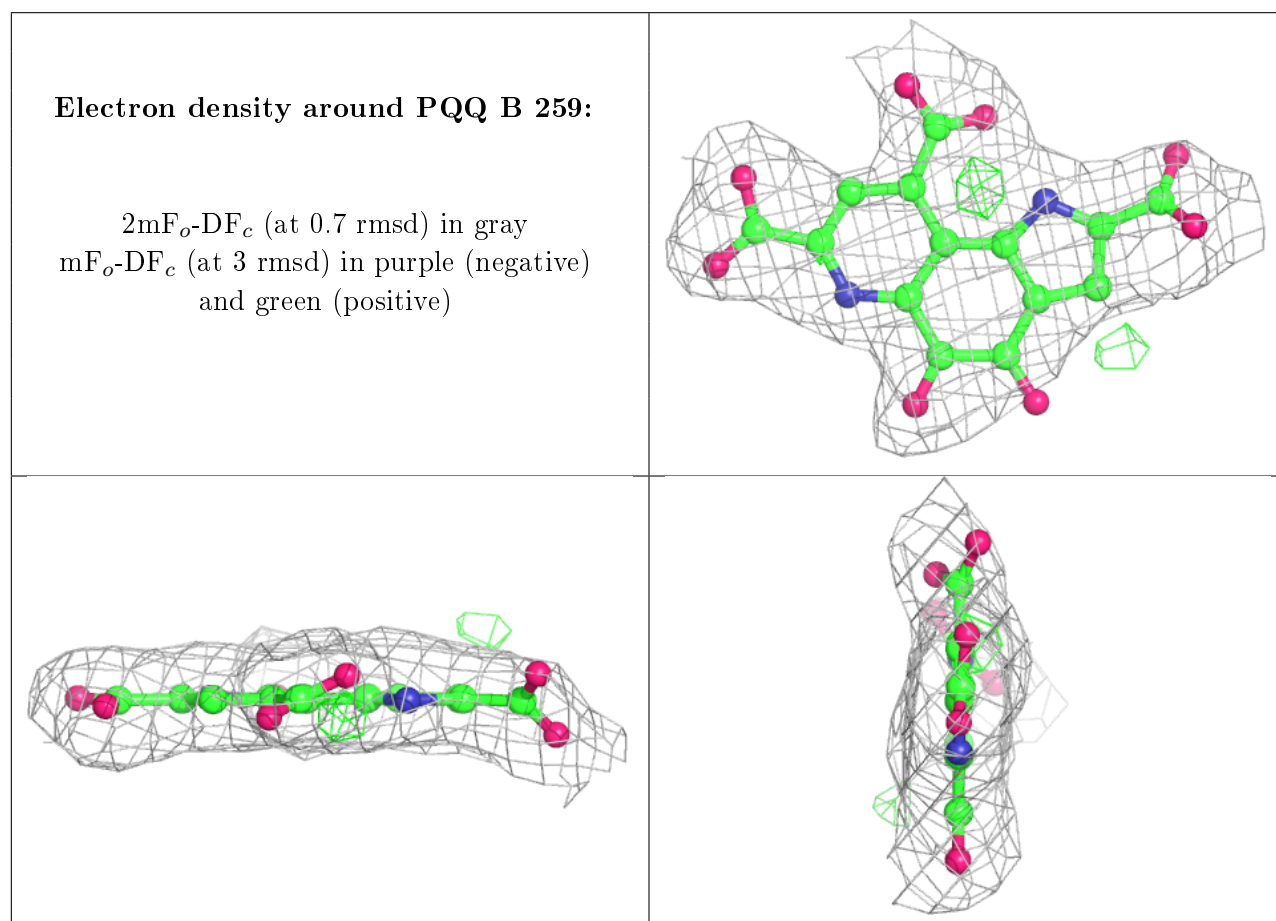
There are no carbohydrates in this entry.

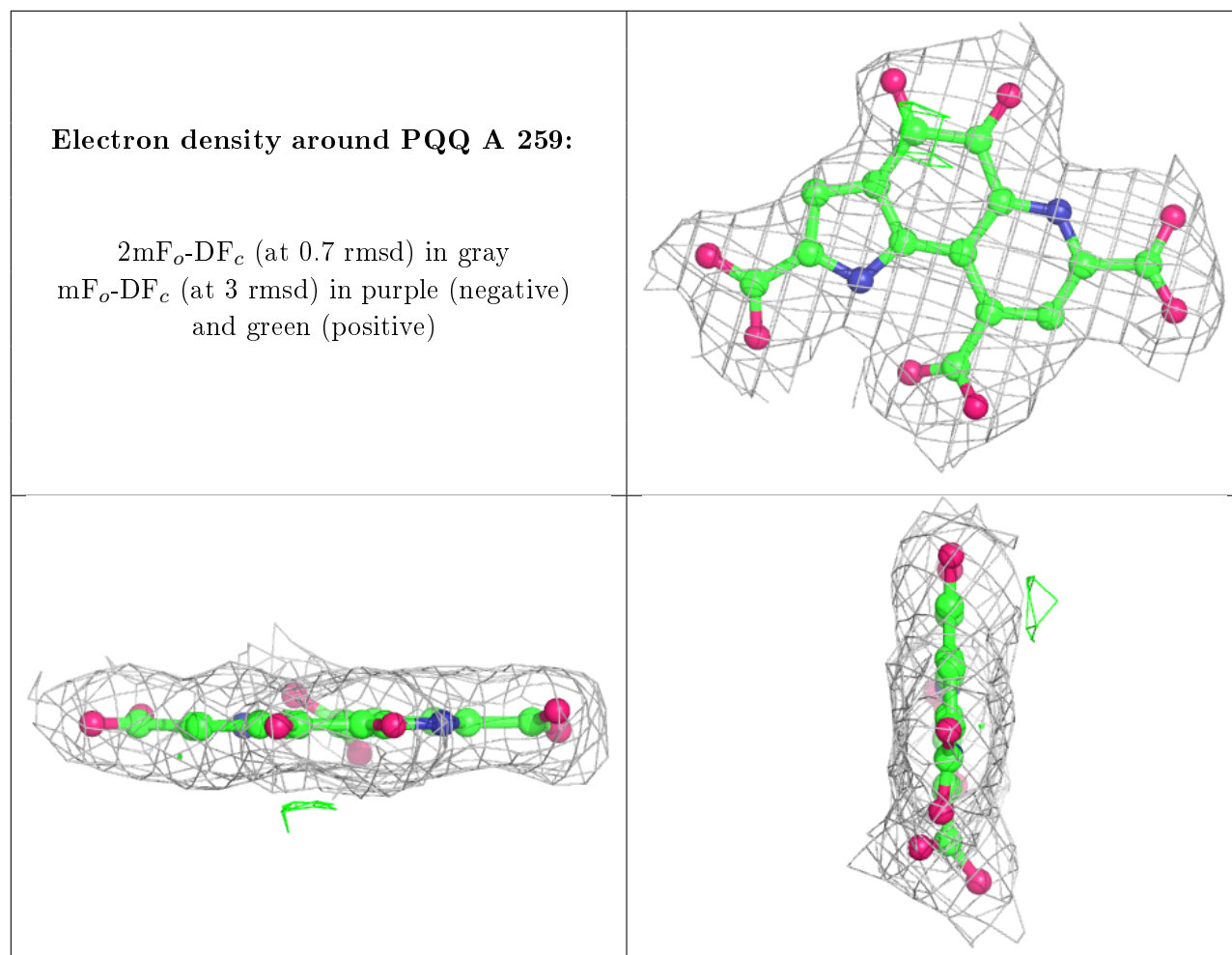
## 6.4 Ligands ⓘ

In the following table, the Atoms column lists the number of modelled atoms in the group and the number defined in the chemical component dictionary. The B-factors column lists the minimum, median, 95<sup>th</sup> percentile and maximum values of B factors of atoms in the group. The column labelled 'Q<0.9' lists the number of atoms with occupancy less than 0.9.

Mol	Type	Chain	Res	Atoms	RSCC	RSR	B-factors(Å <sup>2</sup> )	Q<0.9
2	PQQ	B	259	24/24	0.83	0.17	50,58,60,63	0
2	PQQ	A	259	24/24	0.92	0.14	37,42,44,45	0

The following is a graphical depiction of the model fit to experimental electron density of all instances of the Ligand of Interest. In addition, ligands with molecular weight > 250 and outliers as shown on the geometry validation Tables will also be included. Each fit is shown from different orientation to approximate a three-dimensional view.





## 6.5 Other polymers ⓘ

There are no such residues in this entry.