



Full wwPDB X-ray Structure Validation Report ⓘ

Aug 21, 2020 – 01:59 AM BST

PDB ID : 4HO9
Title : Crystal structure of glucose 1-phosphate thymidyltransferase from Aneurini-
bacillus thermoaerophilus complexed with UDP-galactose and UTP
Authors : Chen, T.J.; Chien, W.T.; Lin, C.C.; Wang, W.C.
Deposited on : 2012-10-22
Resolution : 1.80 Å(reported)

This is a Full wwPDB X-ray Structure Validation Report for a publicly released PDB entry.

We welcome your comments at validation@mail.wwpdb.org

A user guide is available at

<https://www.wwpdb.org/validation/2017/XrayValidationReportHelp>

with specific help available everywhere you see the ⓘ symbol.

The following versions of software and data (see [references ⓘ](#)) were used in the production of this report:

MolProbity : 4.02b-467
Mogul : 1.8.5 (274361), CSD as541be (2020)
Xtriage (Phenix) : 1.13
EDS : 2.13.1
buster-report : 1.1.7 (2018)
Percentile statistics : 20191225.v01 (using entries in the PDB archive December 25th 2019)
Refmac : 5.8.0158
CCP4 : 7.0.044 (Gargrove)
Ideal geometry (proteins) : Engh & Huber (2001)
Ideal geometry (DNA, RNA) : Parkinson et al. (1996)
Validation Pipeline (wwPDB-VP) : 2.13.1

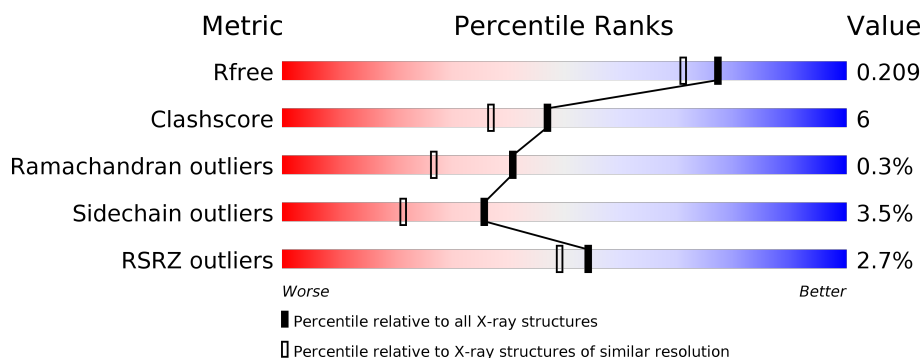
1 Overall quality at a glance ⓘ

The following experimental techniques were used to determine the structure:

X-RAY DIFFRACTION

The reported resolution of this entry is 1.80 Å.

Percentile scores (ranging between 0-100) for global validation metrics of the entry are shown in the following graphic. The table shows the number of entries on which the scores are based.



Metric	Whole archive (#Entries)	Similar resolution (#Entries, resolution range(Å))
R_{free}	130704	5950 (1.80-1.80)
Clashscore	141614	6793 (1.80-1.80)
Ramachandran outliers	138981	6697 (1.80-1.80)
Sidechain outliers	138945	6696 (1.80-1.80)
RSRZ outliers	127900	5850 (1.80-1.80)

The table below summarises the geometric issues observed across the polymeric chains and their fit to the electron density. The red, orange, yellow and green segments on the lower bar indicate the fraction of residues that contain outliers for ≥ 3 , 2, 1 and 0 types of geometric quality criteria respectively. A grey segment represents the fraction of residues that are not modelled. The numeric value for each fraction is indicated below the corresponding segment, with a dot representing fractions $\leq 5\%$. The upper red bar (where present) indicates the fraction of residues that have poor fit to the electron density. The numeric value is given above the bar.

Mol	Chain	Length	Quality of chain
1	A	297	<div> <div>3%</div> <div> <div></div> <div>85%</div> <div>13%</div> <div>..</div> </div> </div>
1	B	297	<div> <div>3%</div> <div> <div></div> <div>86%</div> <div>10%</div> <div>..</div> </div> </div>

The following table lists non-polymeric compounds, carbohydrate monomers and non-standard residues in protein, DNA, RNA chains that are outliers for geometric or electron-density-fit criteria:

Mol	Type	Chain	Res	Chirality	Geometry	Clashes	Electron density
4	SO4	A	305	-	-	X	-

2 Entry composition [i](#)

There are 5 unique types of molecules in this entry. The entry contains 5253 atoms, of which 0 are hydrogens and 0 are deuteriums.

In the tables below, the ZeroOcc column contains the number of atoms modelled with zero occupancy, the AltConf column contains the number of residues with at least one atom in alternate conformation and the Trace column contains the number of residues modelled with at most 2 atoms.

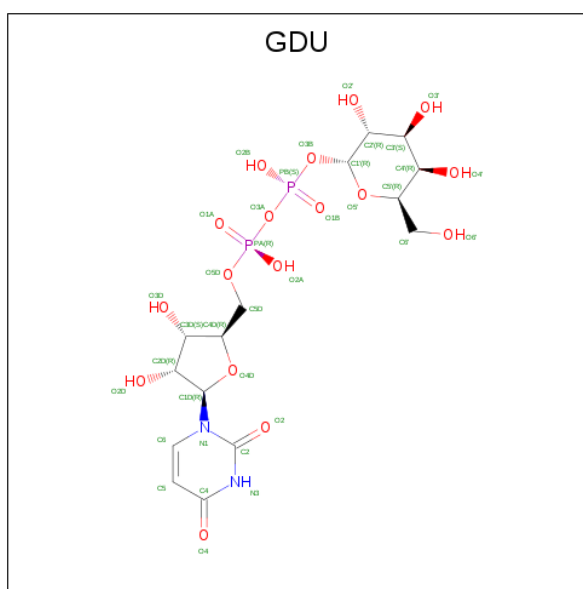
- Molecule 1 is a protein called Glucose-1-phosphate thymidyltransferase.

Mol	Chain	Residues	Atoms					ZeroOcc	AltConf	Trace
1	A	294	Total	C	N	O	S	0	0	0
			2301	1477	377	440	7			
1	B	288	Total	C	N	O	S	0	0	0
			2256	1449	370	430	7			

There are 2 discrepancies between the modelled and reference sequences:

Chain	Residue	Modelled	Actual	Comment	Reference
A	297	GLY	-	EXPRESSION TAG	UNP Q9AGY4
B	297	GLY	-	EXPRESSION TAG	UNP Q9AGY4

- Molecule 2 is GALACTOSE-URIDINE-5'-DIPHOSPHATE (three-letter code: GDU) (formula: C₁₅H₂₄N₂O₁₇P₂).



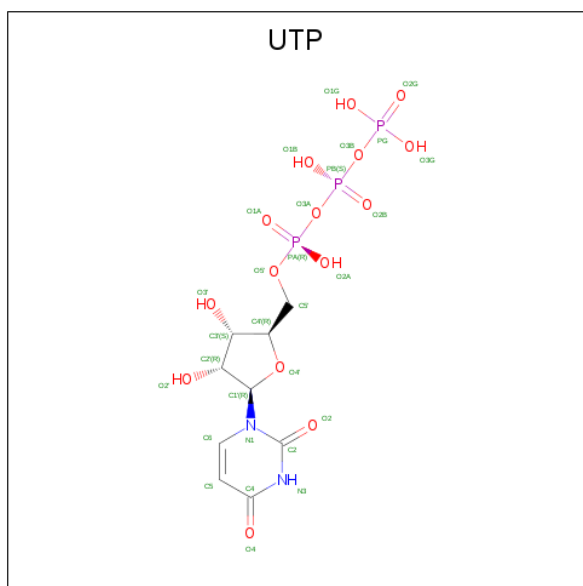
Mol	Chain	Residues	Atoms					ZeroOcc	AltConf
2	A	1	Total	C	N	O	P	0	0
			36	15	2	17	2		

Continued on next page...

Continued from previous page...

Mol	Chain	Residues	Atoms					ZeroOcc	AltConf
2	B	1	Total	C	N	O	P	0	0
			36	15	2	17	2		

- Molecule 3 is URIDINE 5'-TRIPHOSPHATE (three-letter code: UTP) (formula: $C_9H_{15}N_2O_{15}P_3$).



Mol	Chain	Residues	Atoms					ZeroOcc	AltConf
3	A	1	Total	C	N	O	P	0	0
			29	9	2	15	3		
3	B	1	Total	C	N	O	P	0	0
			29	9	2	15	3		

- Molecule 4 is SULFATE ION (three-letter code: SO4) (formula: O_4S).

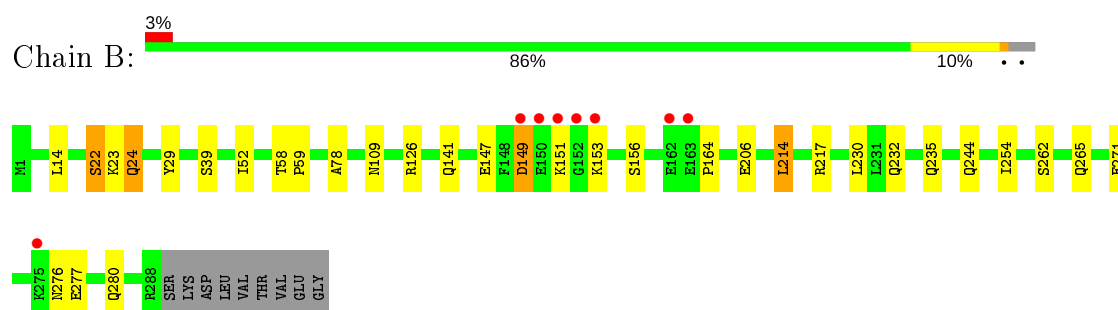


Mol	Chain	Residues	Atoms			ZeroOcc	AltConf
4	A	1	Total	O	S	0	0
			5	4	1		
4	A	1	Total	O	S	0	0
			5	4	1		
4	A	1	Total	O	S	0	0
			5	4	1		
4	A	1	Total	O	S	0	0
			5	4	1		
4	A	1	Total	O	S	0	0
			5	4	1		
4	B	1	Total	O	S	0	0
			5	4	1		
4	B	1	Total	O	S	0	0
			5	4	1		
4	B	1	Total	O	S	0	0
			5	4	1		

- Molecule 5 is water.

Mol	Chain	Residues	Atoms		ZeroOcc	AltConf
5	A	260	Total	O	0	0
			260	260		
5	B	261	Total	O	0	0
			261	261		

- Molecule 1: Glucose-1-phosphate thymidyltransferase



4 Data and refinement statistics

Property	Value	Source
Space group	C 1 2 1	Depositor
Cell constants a, b, c, α , β , γ	114.79 Å 90.76 Å 87.70 Å 90.00° 125.20° 90.00°	Depositor
Resolution (Å)	30.00 – 1.80 25.22 – 1.80	Depositor EDS
% Data completeness (in resolution range)	99.6 (30.00-1.80) 99.6 (25.22-1.80)	Depositor EDS
R_{merge}	0.04	Depositor
R_{sym}	(Not available)	Depositor
$\langle I/\sigma(I) \rangle$ ¹	5.95 (at 1.80 Å)	Xtriage
Refinement program	REFMAC 5.5.0109	Depositor
R, R_{free}	0.171 , 0.211 0.172 , 0.209	Depositor DCC
R_{free} test set	3441 reflections (5.08%)	wwPDB-VP
Wilson B-factor (Å ²)	23.2	Xtriage
Anisotropy	0.035	Xtriage
Bulk solvent k_{sol} (e/Å ³), B_{sol} (Å ²)	0.38 , 47.5	EDS
L-test for twinning ²	$\langle L \rangle = 0.50$, $\langle L^2 \rangle = 0.33$	Xtriage
Estimated twinning fraction	No twinning to report.	Xtriage
F_o, F_c correlation	0.96	EDS
Total number of atoms	5253	wwPDB-VP
Average B, all atoms (Å ²)	25.0	wwPDB-VP

Xtriage's analysis on translational NCS is as follows: *The largest off-origin peak in the Patterson function is 5.31% of the height of the origin peak. No significant pseudotranslation is detected.*

¹Intensities estimated from amplitudes.

²Theoretical values of $\langle |L| \rangle$, $\langle L^2 \rangle$ for acentric reflections are 0.5, 0.333 respectively for untwinned datasets, and 0.375, 0.2 for perfectly twinned datasets.

5 Model quality [i](#)

5.1 Standard geometry [i](#)

Bond lengths and bond angles in the following residue types are not validated in this section: UTP, SO4, GDU

The Z score for a bond length (or angle) is the number of standard deviations the observed value is removed from the expected value. A bond length (or angle) with $|Z| > 5$ is considered an outlier worth inspection. RMSZ is the root-mean-square of all Z scores of the bond lengths (or angles).

Mol	Chain	Bond lengths		Bond angles	
		RMSZ	$\# Z > 5$	RMSZ	$\# Z > 5$
1	A	0.93	2/2344 (0.1%)	0.66	0/3168
1	B	0.95	1/2299 (0.0%)	0.68	1/3107 (0.0%)
All	All	0.94	3/4643 (0.1%)	0.67	1/6275 (0.0%)

Chiral center outliers are detected by calculating the chiral volume of a chiral center and verifying if the center is modelled as a planar moiety or with the opposite hand. A planarity outlier is detected by checking planarity of atoms in a peptide group, atoms in a mainchain group or atoms of a sidechain that are expected to be planar.

Mol	Chain	#Chirality outliers	#Planarity outliers
1	B	0	1

All (3) bond length outliers are listed below:

Mol	Chain	Res	Type	Atoms	Z	Observed(Å)	Ideal(Å)
1	A	118	GLU	CG-CD	5.50	1.60	1.51
1	A	228	GLU	CG-CD	5.11	1.59	1.51
1	B	206	GLU	CD-OE2	5.01	1.31	1.25

All (1) bond angle outliers are listed below:

Mol	Chain	Res	Type	Atoms	Z	Observed(°)	Ideal(°)
1	B	214	LEU	CB-CG-CD1	5.02	119.53	111.00

There are no chirality outliers.

All (1) planarity outliers are listed below:

Mol	Chain	Res	Type	Group
1	B	149	ASP	Peptide

5.2 Too-close contacts ⓘ

In the following table, the Non-H and H(model) columns list the number of non-hydrogen atoms and hydrogen atoms in the chain respectively. The H(added) column lists the number of hydrogen atoms added and optimized by MolProbity. The Clashes column lists the number of clashes within the asymmetric unit, whereas Symm-Clashes lists symmetry related clashes.

Mol	Chain	Non-H	H(model)	H(added)	Clashes	Symm-Clashes
1	A	2301	0	2326	38	0
1	B	2256	0	2277	20	1
2	A	36	0	22	0	0
2	B	36	0	22	0	0
3	A	29	0	11	2	0
3	B	29	0	11	0	0
4	A	25	0	0	3	0
4	B	20	0	0	0	0
5	A	260	0	0	3	0
5	B	261	0	0	6	0
All	All	5253	0	4669	58	1

The all-atom clashscore is defined as the number of clashes found per 1000 atoms (including hydrogen atoms). The all-atom clashscore for this structure is 6.

All (58) close contacts within the same asymmetric unit are listed below, sorted by their clash magnitude.

Atom-1	Atom-2	Interatomic distance (Å)	Clash overlap (Å)
1:A:280:GLN:HG2	5:A:633:HOH:O	1.60	0.97
1:A:191:ALA:N	4:A:306:SO4:O4	1.98	0.95
1:A:262:SER:H	1:A:265:GLN:HE21	1.18	0.91
1:A:290:LYS:H	1:A:290:LYS:HE2	1.37	0.90
1:B:149:ASP:HB3	1:B:151:LYS:H	1.44	0.80
1:B:271:GLU:HG2	5:B:545:HOH:O	1.81	0.79
1:A:139:ASP:HB2	1:A:142:ARG:NE	2.05	0.71
1:A:236:PHE:CE2	1:A:240:ILE:HD11	2.33	0.64
1:B:24:GLN:H	1:B:24:GLN:HE21	1.46	0.63
1:A:125:ASN:ND2	5:A:655:HOH:O	2.31	0.62
1:A:138:LYS:HG3	1:B:244:GLN:O	2.00	0.61
1:A:244:GLN:HE22	1:B:217:ARG:HA	1.65	0.61
1:A:150:GLU:H	1:A:150:GLU:CD	2.05	0.59
1:B:24:GLN:H	1:B:24:GLN:NE2	2.01	0.59
1:A:211:HIS:HD2	4:A:305:SO4:O4	1.86	0.59
1:A:265:GLN:HA	1:A:268:LYS:HE3	1.88	0.55
1:B:235:GLN:NE2	5:B:646:HOH:O	2.39	0.55

Continued on next page...

Continued from previous page...

Atom-1	Atom-2	Interatomic distance (Å)	Clash overlap (Å)
1:A:254:ILE:O	1:A:258:MET:HG3	2.07	0.55
1:B:280:GLN:HG2	5:B:588:HOH:O	2.06	0.55
1:A:236:PHE:CE2	1:A:240:ILE:CD1	2.90	0.55
1:A:263:ARG:NH2	1:A:290:LYS:HD3	2.24	0.53
1:A:262:SER:H	1:A:265:GLN:NE2	1.97	0.52
1:A:24:GLN:H	1:A:24:GLN:NE2	2.07	0.52
1:A:139:ASP:HB2	1:A:142:ARG:HE	1.75	0.52
1:A:24:GLN:H	1:A:24:GLN:HE21	1.58	0.52
1:A:157:ILE:O	1:A:202:LYS:HE3	2.11	0.51
1:B:149:ASP:HB2	1:B:153:LYS:H	1.76	0.50
1:B:14:LEU:CD1	1:B:23:LYS:HG3	2.44	0.48
1:B:149:ASP:HB3	1:B:151:LYS:N	2.21	0.47
1:B:147:GLU:HB3	1:B:156:SER:OG	2.15	0.47
1:A:112:TYR:HE1	5:B:535:HOH:O	1.98	0.46
1:A:202:LYS:NZ	5:A:532:HOH:O	2.48	0.46
1:B:58:THR:HB	1:B:59:PRO:HD3	1.98	0.45
1:A:276:ASN:ND2	1:A:279:GLY:H	2.14	0.45
1:A:60:ARG:NH2	1:A:63:GLN:OE1	2.50	0.45
1:A:276:ASN:C	1:A:276:ASN:HD22	2.20	0.45
1:A:139:ASP:CB	1:A:142:ARG:HE	2.29	0.44
1:B:232:GLN:HA	1:B:235:GLN:HE21	1.81	0.44
1:A:290:LYS:N	1:A:290:LYS:HE2	2.17	0.44
1:A:211:HIS:CD2	4:A:305:SO4:O4	2.70	0.44
1:A:254:ILE:O	1:A:258:MET:CG	2.65	0.44
3:A:301:UTP:PB	3:A:301:UTP:H5'1	2.58	0.44
1:B:39:SER:HB2	1:B:254:ILE:CD1	2.48	0.44
1:B:52:ILE:HA	1:B:78:ALA:O	2.18	0.43
1:B:141:GLN:HB3	1:B:164:PRO:HG3	2.00	0.43
1:B:262:SER:H	1:B:265:GLN:NE2	2.16	0.43
1:A:149:ASP:HB3	1:A:155:ILE:HD11	2.00	0.43
1:A:14:LEU:HD11	1:A:23:LYS:HE3	2.01	0.43
3:A:301:UTP:PB	3:A:301:UTP:C5'	3.07	0.42
1:A:39:SER:HB2	1:A:254:ILE:CD1	2.48	0.42
1:A:139:ASP:CB	1:A:142:ARG:NE	2.79	0.42
1:A:238:GLU:HG2	1:A:242:LYS:HG3	2.02	0.42
1:A:236:PHE:CZ	1:A:240:ILE:HD11	2.54	0.41
1:A:242:LYS:HB3	1:A:242:LYS:HE3	1.61	0.41
1:A:139:ASP:HB2	1:A:142:ARG:CZ	2.50	0.41
1:B:22:SER:OG	5:B:660:HOH:O	2.11	0.41
1:A:30:ASP:OD2	1:A:241:GLU:OE1	2.38	0.41
1:B:126:ARG:NH2	5:B:619:HOH:O	2.50	0.40

All (1) symmetry-related close contacts are listed below. The label for Atom-2 includes the symmetry operator and encoded unit-cell translations to be applied.

Atom-1	Atom-2	Interatomic distance (Å)	Clash overlap (Å)
1:B:235:GLN:OE1	1:B:235:GLN:OE1[2_656]	1.98	0.22

5.3 Torsion angles [i](#)

5.3.1 Protein backbone [i](#)

In the following table, the Percentiles column shows the percent Ramachandran outliers of the chain as a percentile score with respect to all X-ray entries followed by that with respect to entries of similar resolution.

The Analysed column shows the number of residues for which the backbone conformation was analysed, and the total number of residues.

Mol	Chain	Analysed	Favoured	Allowed	Outliers	Percentiles	
1	A	292/297 (98%)	288 (99%)	3 (1%)	1 (0%)	41	27
1	B	286/297 (96%)	281 (98%)	4 (1%)	1 (0%)	41	27
All	All	578/594 (97%)	569 (98%)	7 (1%)	2 (0%)	41	27

All (2) Ramachandran outliers are listed below:

Mol	Chain	Res	Type
1	A	29	TYR
1	B	29	TYR

5.3.2 Protein sidechains [i](#)

In the following table, the Percentiles column shows the percent sidechain outliers of the chain as a percentile score with respect to all X-ray entries followed by that with respect to entries of similar resolution.

The Analysed column shows the number of residues for which the sidechain conformation was analysed, and the total number of residues.

Mol	Chain	Analysed	Rotameric	Outliers	Percentiles	
1	A	249/251 (99%)	239 (96%)	10 (4%)	31	16
1	B	243/251 (97%)	236 (97%)	7 (3%)	42	29
All	All	492/502 (98%)	475 (96%)	17 (4%)	36	21

All (17) residues with a non-rotameric sidechain are listed below:

Mol	Chain	Res	Type
1	A	1	MET
1	A	13	ARG
1	A	24	GLN
1	A	60	ARG
1	A	81	SER
1	A	119	LEU
1	A	232	GLN
1	A	258	MET
1	A	276	ASN
1	A	290	LYS
1	B	22	SER
1	B	24	GLN
1	B	109	ASN
1	B	214	LEU
1	B	230	LEU
1	B	276	ASN
1	B	277	GLU

Some sidechains can be flipped to improve hydrogen bonding and reduce clashes. All (12) such sidechains are listed below:

Mol	Chain	Res	Type
1	A	24	GLN
1	A	211	HIS
1	A	232	GLN
1	A	244	GLN
1	A	265	GLN
1	A	276	ASN
1	B	24	GLN
1	B	63	GLN
1	B	235	GLN
1	B	244	GLN
1	B	265	GLN
1	B	276	ASN

5.3.3 RNA ⓘ

There are no RNA molecules in this entry.

5.4 Non-standard residues in protein, DNA, RNA chains ⓘ

There are no non-standard protein/DNA/RNA residues in this entry.

5.5 Carbohydrates ⓘ

There are no monosaccharides in this entry.

5.6 Ligand geometry ⓘ

13 ligands are modelled in this entry.

In the following table, the Counts columns list the number of bonds (or angles) for which Mogul statistics could be retrieved, the number of bonds (or angles) that are observed in the model and the number of bonds (or angles) that are defined in the Chemical Component Dictionary. The Link column lists molecule types, if any, to which the group is linked. The Z score for a bond length (or angle) is the number of standard deviations the observed value is removed from the expected value. A bond length (or angle) with $|Z| > 2$ is considered an outlier worth inspection. RMSZ is the root-mean-square of all Z scores of the bond lengths (or angles).

Mol	Type	Chain	Res	Link	Bond lengths			Bond angles		
					Counts	RMSZ	# Z > 2	Counts	RMSZ	# Z > 2
4	SO4	A	303	-	4,4,4	0.23	0	6,6,6	0.20	0
3	UTP	B	301	-	26,30,30	2.20	4 (15%)	34,47,47	2.08	8 (23%)
4	SO4	B	303	-	4,4,4	0.25	0	6,6,6	0.46	0
4	SO4	A	306	-	4,4,4	0.27	0	6,6,6	0.25	0
2	GDU	A	300	-	31,38,38	1.24	2 (6%)	41,58,58	1.03	3 (7%)
4	SO4	B	304	-	4,4,4	0.17	0	6,6,6	0.22	0
3	UTP	A	301	-	26,30,30	2.52	5 (19%)	34,47,47	1.75	6 (17%)
4	SO4	B	305	-	4,4,4	0.26	0	6,6,6	0.28	0
4	SO4	A	305	-	4,4,4	0.16	0	6,6,6	0.29	0
4	SO4	A	302	-	4,4,4	0.23	0	6,6,6	0.69	0
4	SO4	B	302	-	4,4,4	0.16	0	6,6,6	0.06	0
2	GDU	B	300	-	31,38,38	0.78	1 (3%)	41,58,58	1.07	4 (9%)
4	SO4	A	304	-	4,4,4	0.34	0	6,6,6	0.54	0

In the following table, the Chirals column lists the number of chiral outliers, the number of chiral centers analysed, the number of these observed in the model and the number defined in the Chemical Component Dictionary. Similar counts are reported in the Torsion and Rings columns. '-' means no outliers of that kind were identified.

Mol	Type	Chain	Res	Link	Chirals	Torsions	Rings
3	UTP	B	301	-	-	6/22/38/38	0/2/2/2

Continued on next page...

Continued from previous page...

Mol	Type	Chain	Res	Link	Chirals	Torsions	Rings
2	GDU	A	300	-	-	4/21/59/59	0/3/3/3
3	UTP	A	301	-	-	9/22/38/38	0/2/2/2
2	GDU	B	300	-	-	4/21/59/59	0/3/3/3

All (12) bond length outliers are listed below:

Mol	Chain	Res	Type	Atoms	Z	Observed(Å)	Ideal(Å)
3	A	301	UTP	C6-N1	-7.23	1.34	1.47
3	A	301	UTP	O4-C4	7.03	1.37	1.23
3	B	301	UTP	C6-N1	-6.51	1.35	1.47
3	B	301	UTP	C6-C5	-5.26	1.38	1.52
3	A	301	UTP	C6-C5	-5.17	1.38	1.52
3	A	301	UTP	C5-C4	-4.78	1.39	1.50
3	B	301	UTP	C5-C4	-4.56	1.39	1.50
3	B	301	UTP	O4-C4	4.33	1.32	1.23
2	A	300	GDU	O4-C4	4.17	1.35	1.24
2	A	300	GDU	O4D-C1D	2.95	1.45	1.41
2	B	300	GDU	O4-C4	2.48	1.30	1.24
3	A	301	UTP	O2-C2	2.30	1.27	1.23

All (21) bond angle outliers are listed below:

Mol	Chain	Res	Type	Atoms	Z	Observed(°)	Ideal(°)
3	B	301	UTP	C4-N3-C2	-6.72	120.22	125.79
3	A	301	UTP	C4-N3-C2	-5.60	121.14	125.79
3	B	301	UTP	C5-C4-N3	4.17	121.33	116.65
3	B	301	UTP	PB-O3A-PA	-3.81	119.77	132.83
3	A	301	UTP	PB-O3A-PA	-3.57	120.59	132.83
3	B	301	UTP	PB-O3B-PG	-3.57	120.59	132.83
3	A	301	UTP	O2-C2-N1	-3.30	118.96	123.11
3	B	301	UTP	N3-C2-N1	3.22	120.06	116.65
3	A	301	UTP	N3-C2-N1	3.11	119.95	116.65
3	B	301	UTP	O3'-C3'-C4'	-2.85	102.82	111.05
2	B	300	GDU	O5'-C5'-C4'	2.79	114.76	109.69
3	A	301	UTP	C5-C6-N1	2.66	120.37	111.61
3	B	301	UTP	C5-C6-N1	2.62	120.23	111.61
2	B	300	GDU	O4D-C1D-C2D	-2.43	103.37	106.93
3	A	301	UTP	C5-C4-N3	2.26	119.19	116.65
3	B	301	UTP	O4'-C1'-N1	-2.14	106.38	109.30
2	B	300	GDU	O5'-C1'-O3B	-2.14	108.57	111.36
2	A	300	GDU	O4D-C1D-C2D	-2.11	103.84	106.93

Continued on next page...

Continued from previous page...

Mol	Chain	Res	Type	Atoms	Z	Observed(°)	Ideal(°)
2	A	300	GDU	O2B-PB-O1B	2.08	122.53	112.24
2	A	300	GDU	O5'-C5'-C6'	2.07	111.58	106.44
2	B	300	GDU	O6'-C6'-C5'	-2.06	104.23	111.29

There are no chirality outliers.

All (23) torsion outliers are listed below:

Mol	Chain	Res	Type	Atoms
3	B	301	UTP	C5'-O5'-PA-O1A
3	B	301	UTP	C5'-O5'-PA-O3A
2	A	300	GDU	C2D-C1D-N1-C6
2	A	300	GDU	O4D-C1D-N1-C6
3	A	301	UTP	C5'-O5'-PA-O1A
3	A	301	UTP	C5'-O5'-PA-O3A
2	B	300	GDU	C2D-C1D-N1-C6
3	B	301	UTP	PB-O3B-PG-O2G
2	B	300	GDU	PB-O3A-PA-O1A
2	B	300	GDU	C4'-C5'-C6'-O6'
3	B	301	UTP	PB-O3B-PG-O1G
3	A	301	UTP	PB-O3B-PG-O1G
3	A	301	UTP	PB-O3B-PG-O3G
3	B	301	UTP	PA-O3A-PB-O1B
3	A	301	UTP	PG-O3B-PB-O1B
3	B	301	UTP	C5'-O5'-PA-O2A
3	A	301	UTP	C5'-O5'-PA-O2A
3	A	301	UTP	PA-O3A-PB-O1B
2	A	300	GDU	PB-O3A-PA-O1A
3	A	301	UTP	PA-O3A-PB-O2B
3	A	301	UTP	PB-O3A-PA-O5'
2	A	300	GDU	PB-O3A-PA-O2A
2	B	300	GDU	PB-O3A-PA-O2A

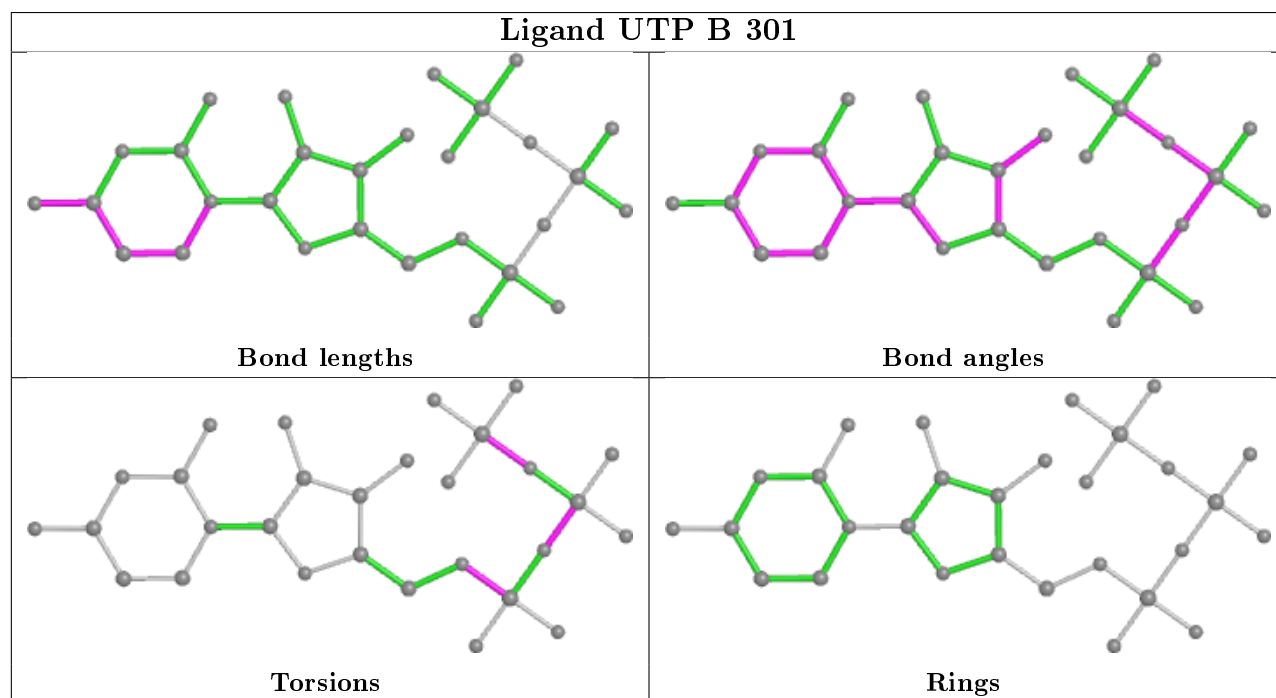
There are no ring outliers.

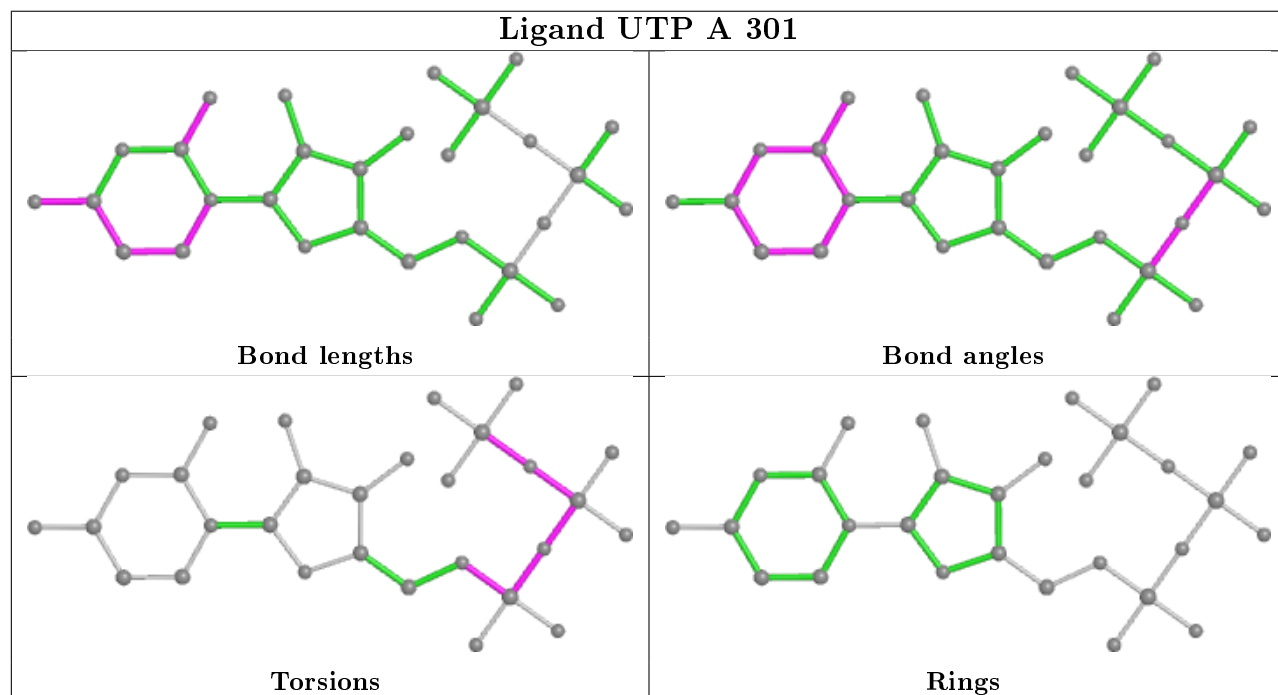
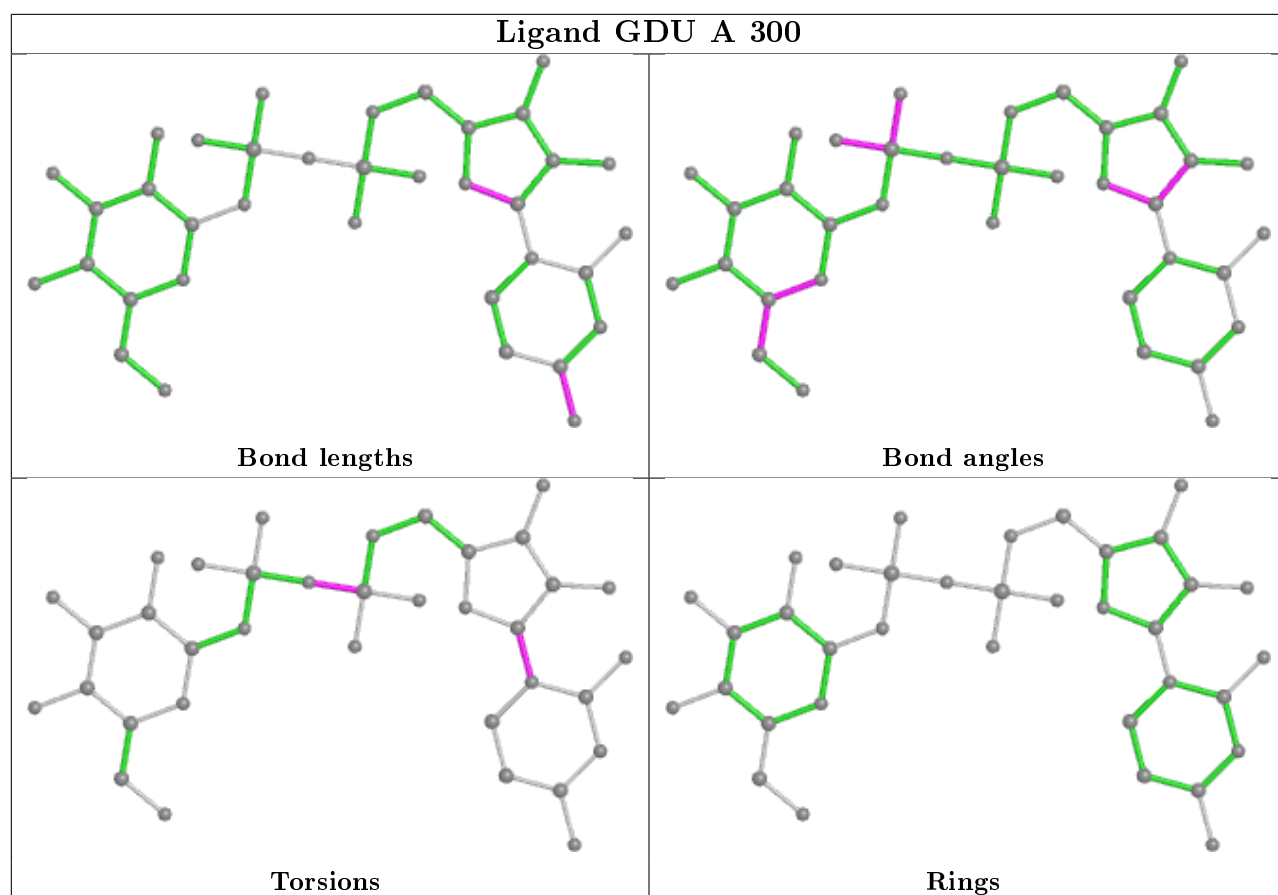
3 monomers are involved in 5 short contacts:

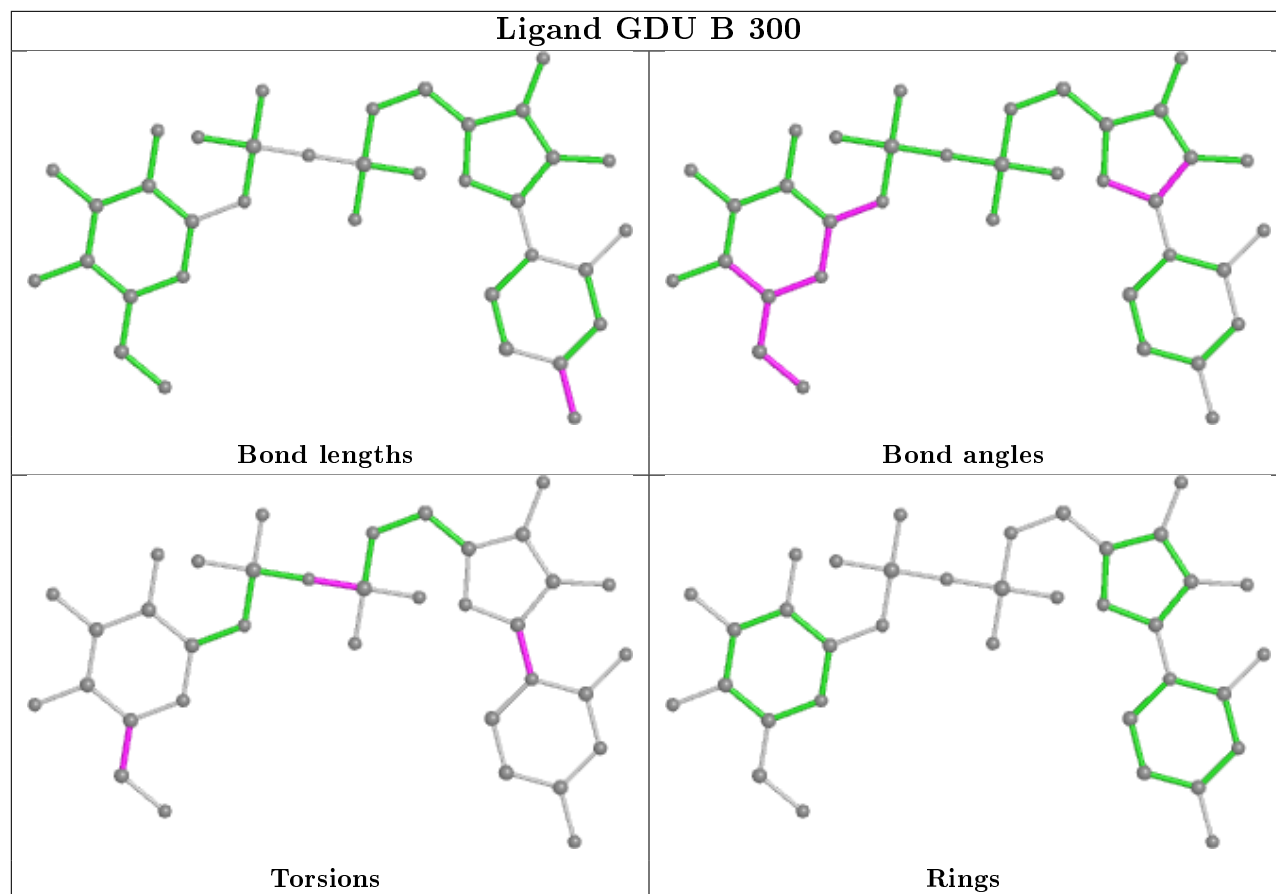
Mol	Chain	Res	Type	Clashes	Symm-Clashes
4	A	306	SO4	1	0
3	A	301	UTP	2	0
4	A	305	SO4	2	0

The following is a two-dimensional graphical depiction of Mogul quality analysis of bond lengths,

bond angles, torsion angles, and ring geometry for all instances of the Ligand of Interest. In addition, ligands with molecular weight > 250 and outliers as shown on the validation Tables will also be included. For torsion angles, if less than 5% of the Mogul distribution of torsion angles is within 10 degrees of the torsion angle in question, then that torsion angle is considered an outlier. Any bond that is central to one or more torsion angles identified as an outlier by Mogul will be highlighted in the graph. For rings, the root-mean-square deviation (RMSD) between the ring in question and similar rings identified by Mogul is calculated over all ring torsion angles. If the average RMSD is greater than 60 degrees and the minimal RMSD between the ring in question and any Mogul-identified rings is also greater than 60 degrees, then that ring is considered an outlier. The outliers are highlighted in purple. The color gray indicates Mogul did not find sufficient equivalents in the CSD to analyse the geometry.







5.7 Other polymers [i](#)

There are no such residues in this entry.

5.8 Polymer linkage issues [i](#)

There are no chain breaks in this entry.

6 Fit of model and data [i](#)

6.1 Protein, DNA and RNA chains [i](#)

In the following table, the column labelled ‘#RSRZ> 2’ contains the number (and percentage) of RSRZ outliers, followed by percent RSRZ outliers for the chain as percentile scores relative to all X-ray entries and entries of similar resolution. The OWAB column contains the minimum, median, 95th percentile and maximum values of the occupancy-weighted average B-factor per residue. The column labelled ‘Q< 0.9’ lists the number of (and percentage) of residues with an average occupancy less than 0.9.

Mol	Chain	Analysed	<RSRZ>	#RSRZ>2	OWAB(Å ²)	Q<0.9
1	A	294/297 (98%)	-0.23	8 (2%) 54 49	14, 23, 40, 53	0
1	B	288/297 (96%)	-0.21	8 (2%) 53 47	13, 22, 36, 59	0
All	All	582/594 (97%)	-0.22	16 (2%) 54 49	13, 23, 38, 59	0

All (16) RSRZ outliers are listed below:

Mol	Chain	Res	Type	RSRZ
1	B	151	LYS	3.9
1	B	150	GLU	3.9
1	A	294	THR	3.6
1	B	149	ASP	3.5
1	A	150	GLU	3.3
1	A	162	GLU	3.1
1	A	125	ASN	2.9
1	A	151	LYS	2.7
1	B	162	GLU	2.5
1	A	291	ASP	2.4
1	A	289	SER	2.3
1	B	153	LYS	2.3
1	B	152	GLY	2.2
1	B	163	GLU	2.2
1	B	275	LYS	2.2
1	A	163	GLU	2.1

6.2 Non-standard residues in protein, DNA, RNA chains [i](#)

There are no non-standard protein/DNA/RNA residues in this entry.

6.3 Carbohydrates ⓘ

There are no monosaccharides in this entry.

6.4 Ligands ⓘ

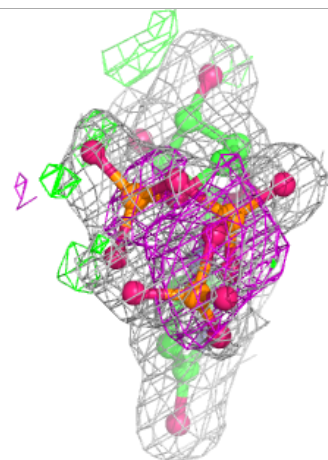
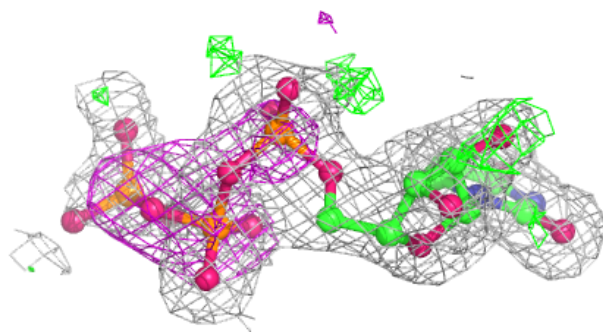
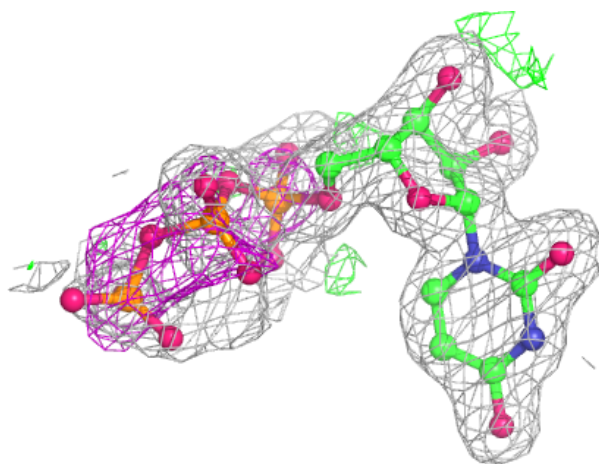
In the following table, the Atoms column lists the number of modelled atoms in the group and the number defined in the chemical component dictionary. The B-factors column lists the minimum, median, 95th percentile and maximum values of B factors of atoms in the group. The column labelled 'Q< 0.9' lists the number of atoms with occupancy less than 0.9.

Mol	Type	Chain	Res	Atoms	RSCC	RSR	B-factors(Å ²)	Q<0.9
4	SO4	B	305	5/5	0.78	0.28	49,60,61,64	0
4	SO4	A	303	5/5	0.79	0.19	55,59,64,65	0
4	SO4	A	306	5/5	0.81	0.29	66,70,72,74	0
3	UTP	A	301	29/29	0.82	0.15	20,28,67,71	0
3	UTP	B	301	29/29	0.85	0.14	16,21,65,67	0
4	SO4	B	304	5/5	0.91	0.24	58,59,63,63	0
4	SO4	A	302	5/5	0.91	0.18	44,44,48,49	0
4	SO4	A	305	5/5	0.92	0.16	57,58,61,62	0
4	SO4	B	302	5/5	0.93	0.19	85,85,86,87	0
4	SO4	A	304	5/5	0.94	0.18	37,38,49,50	0
4	SO4	B	303	5/5	0.95	0.19	41,46,48,50	0
2	GDU	A	300	36/36	0.97	0.07	19,23,30,34	0
2	GDU	B	300	36/36	0.98	0.05	17,21,24,28	0

The following is a graphical depiction of the model fit to experimental electron density of all instances of the Ligand of Interest. In addition, ligands with molecular weight > 250 and outliers as shown on the geometry validation Tables will also be included. Each fit is shown from different orientation to approximate a three-dimensional view.

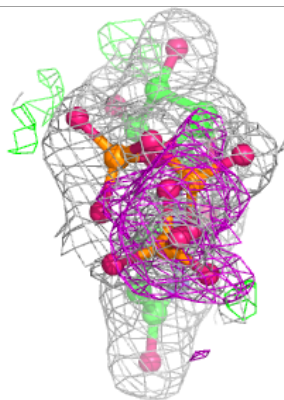
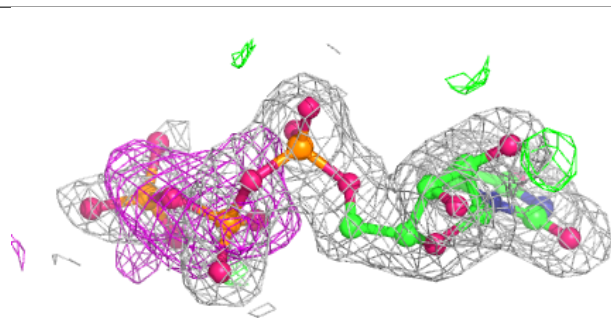
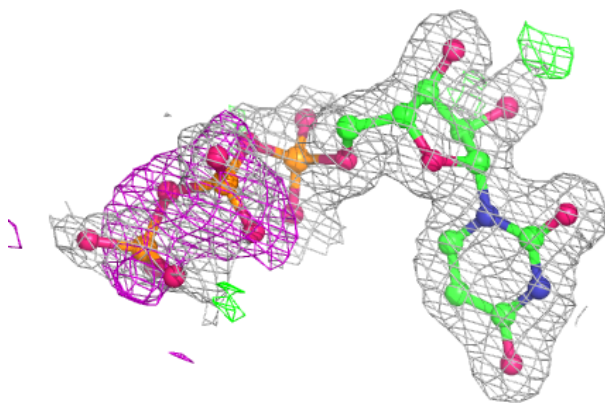
Electron density around UTP A 301:

$2mF_o-DF_c$ (at 0.7 rmsd) in gray
 mF_o-DF_c (at 3 rmsd) in purple (negative)
and green (positive)

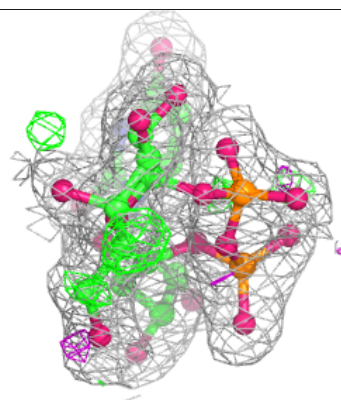
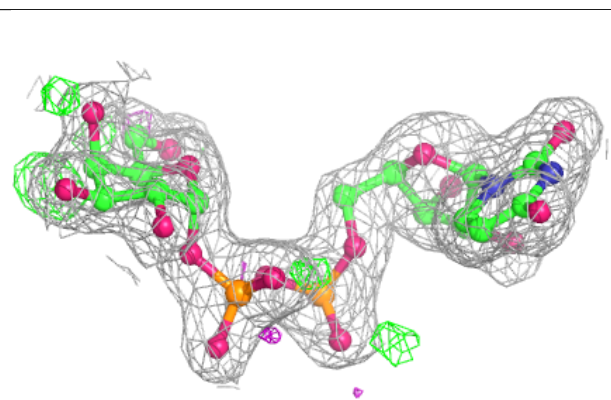
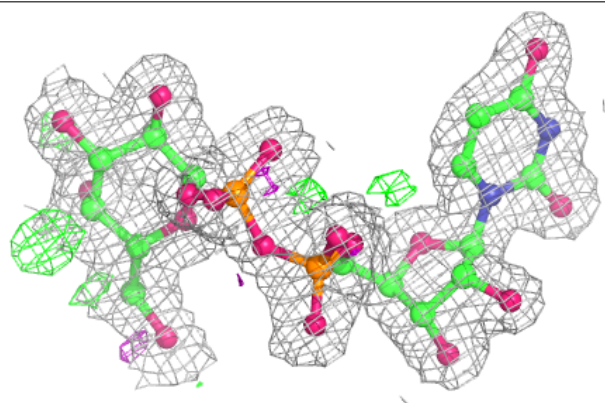


Electron density around UTP B 301:

$2mF_o-DF_c$ (at 0.7 rmsd) in gray
 mF_o-DF_c (at 3 rmsd) in purple (negative)
and green (positive)

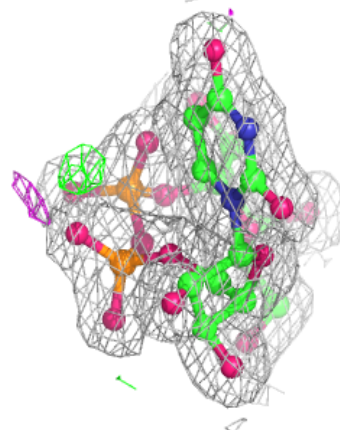
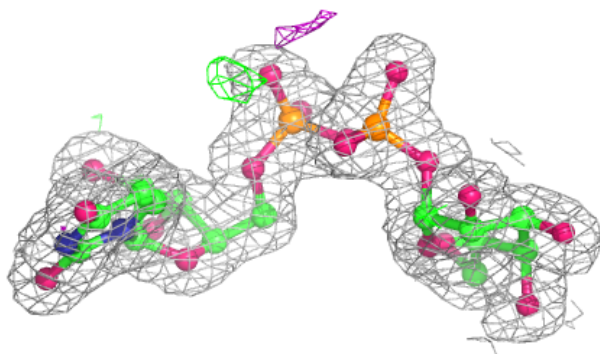
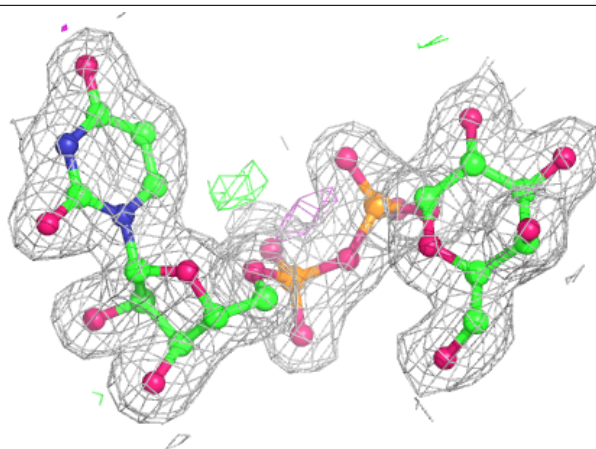
**Electron density around GDU A 300:**

$2mF_o-DF_c$ (at 0.7 rmsd) in gray
 mF_o-DF_c (at 3 rmsd) in purple (negative)
and green (positive)



Electron density around GDU B 300:

$2mF_o-DF_c$ (at 0.7 rmsd) in gray
 mF_o-DF_c (at 3 rmsd) in purple (negative)
and green (positive)



6.5 Other polymers ⓘ

There are no such residues in this entry.