



# wwPDB X-ray Structure Validation Summary Report ⓘ

Jun 7, 2020 – 03:27 am BST

PDB ID : 6HSF  
Title : Crystal structure of Schistosoma mansoni HDAC8 mutant H292M complexed with PCI-34051  
Authors : Shaik, T.B.; Marek, M.; Romier, C.  
Deposited on : 2018-10-01  
Resolution : 1.90 Å(reported)

This is a wwPDB X-ray Structure Validation Summary Report for a publicly released PDB entry.

We welcome your comments at [validation@mail.wwpdb.org](mailto:validation@mail.wwpdb.org)

A user guide is available at

<https://www.wwpdb.org/validation/2017/XrayValidationReportHelp>

with specific help available everywhere you see the ⓘ symbol.

---

The following versions of software and data (see [references ⓘ](#)) were used in the production of this report:

MolProbity : 4.02b-467  
Mogul : 1.8.5 (274361), CSD as541be (2020)  
Xtriage (Phenix) : 1.13  
EDS : 2.11  
buster-report : 1.1.7 (2018)  
Percentile statistics : 20191225.v01 (using entries in the PDB archive December 25th 2019)  
Refmac : 5.8.0158  
CCP4 : 7.0.044 (Gargrove)  
Ideal geometry (proteins) : Engh & Huber (2001)  
Ideal geometry (DNA, RNA) : Parkinson et al. (1996)  
Validation Pipeline (wwPDB-VP) : 2.11

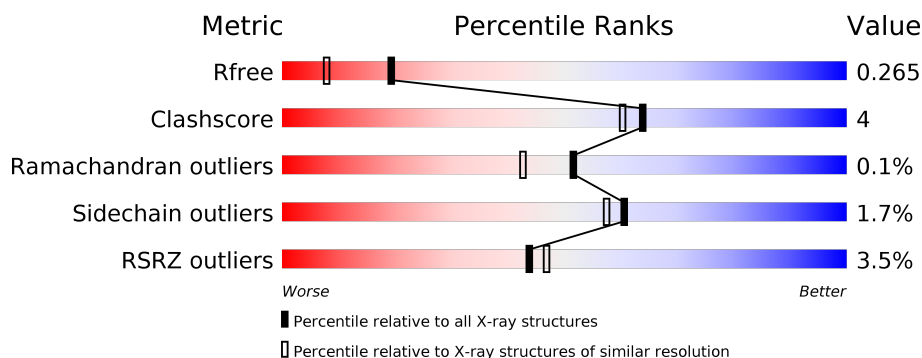
# 1 Overall quality at a glance

The following experimental techniques were used to determine the structure:

## *X-RAY DIFFRACTION*

The reported resolution of this entry is 1.90 Å.

Percentile scores (ranging between 0-100) for global validation metrics of the entry are shown in the following graphic. The table shows the number of entries on which the scores are based.



Metric	Whole archive (#Entries)	Similar resolution (#Entries, resolution range(Å))
$R_{free}$	130704	6207 (1.90-1.90)
Clashscore	141614	6847 (1.90-1.90)
Ramachandran outliers	138981	6760 (1.90-1.90)
Sidechain outliers	138945	6760 (1.90-1.90)
RSRZ outliers	127900	6082 (1.90-1.90)

The table below summarises the geometric issues observed across the polymeric chains and their fit to the electron density. The red, orange, yellow and green segments on the lower bar indicate the fraction of residues that contain outliers for  $\geq 3$ , 2, 1 and 0 types of geometric quality criteria respectively. A grey segment represents the fraction of residues that are not modelled. The numeric value for each fraction is indicated below the corresponding segment, with a dot representing fractions  $\leq 5\%$ . The upper red bar (where present) indicates the fraction of residues that have poor fit to the electron density. The numeric value is given above the bar.

Mol	Chain	Length	Quality of chain
1	A	447	
1	B	447	
1	C	447	
1	D	447	

## 2 Entry composition

There are 7 unique types of molecules in this entry. The entry contains 13896 atoms, of which 0 are hydrogens and 0 are deuteriums.

In the tables below, the ZeroOcc column contains the number of atoms modelled with zero occupancy, the AltConf column contains the number of residues with at least one atom in alternate conformation and the Trace column contains the number of residues modelled with at most 2 atoms.

- Molecule 1 is a protein called Histone deacetylase.

Mol	Chain	Residues	Atoms					ZeroOcc	AltConf	Trace
1	A	396	Total	C	N	O	S	0	3	0
			3185	2057	528	584	16			
1	B	405	Total	C	N	O	S	0	6	0
			3259	2102	546	594	17			
1	C	406	Total	C	N	O	S	0	2	0
			3248	2094	544	594	16			
1	D	396	Total	C	N	O	S	0	3	0
			3185	2056	530	583	16			

There are 32 discrepancies between the modelled and reference sequences:

Chain	Residue	Modelled	Actual	Comment	Reference
A	0	HIS	-	expression tag	UNP A5H660
A	292	MET	HIS	engineered mutation	UNP A5H660
A	441	GLY	-	expression tag	UNP A5H660
A	442	SER	-	expression tag	UNP A5H660
A	443	LEU	-	expression tag	UNP A5H660
A	444	VAL	-	expression tag	UNP A5H660
A	445	PRO	-	expression tag	UNP A5H660
A	446	ARG	-	expression tag	UNP A5H660
B	0	HIS	-	expression tag	UNP A5H660
B	292	MET	HIS	engineered mutation	UNP A5H660
B	441	GLY	-	expression tag	UNP A5H660
B	442	SER	-	expression tag	UNP A5H660
B	443	LEU	-	expression tag	UNP A5H660
B	444	VAL	-	expression tag	UNP A5H660
B	445	PRO	-	expression tag	UNP A5H660
B	446	ARG	-	expression tag	UNP A5H660
C	0	HIS	-	expression tag	UNP A5H660
C	292	MET	HIS	engineered mutation	UNP A5H660
C	441	GLY	-	expression tag	UNP A5H660
C	442	SER	-	expression tag	UNP A5H660
C	443	LEU	-	expression tag	UNP A5H660

*Continued on next page...*

*Continued from previous page...*

Chain	Residue	Modelled	Actual	Comment	Reference
C	444	VAL	-	expression tag	UNP A5H660
C	445	PRO	-	expression tag	UNP A5H660
C	446	ARG	-	expression tag	UNP A5H660
D	0	HIS	-	expression tag	UNP A5H660
D	292	MET	HIS	engineered mutation	UNP A5H660
D	441	GLY	-	expression tag	UNP A5H660
D	442	SER	-	expression tag	UNP A5H660
D	443	LEU	-	expression tag	UNP A5H660
D	444	VAL	-	expression tag	UNP A5H660
D	445	PRO	-	expression tag	UNP A5H660
D	446	ARG	-	expression tag	UNP A5H660

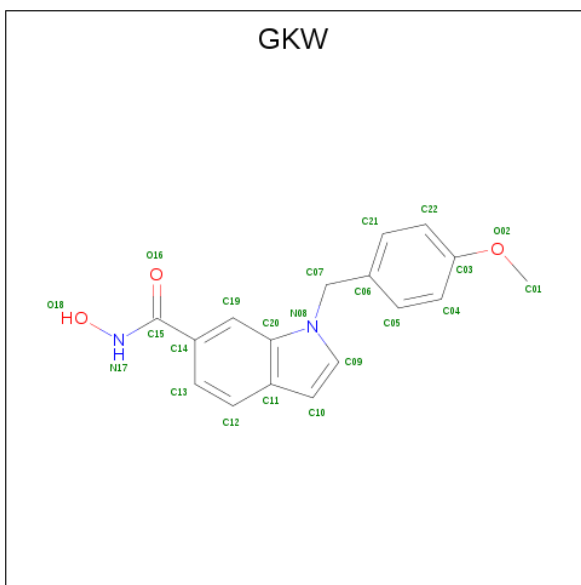
- Molecule 2 is ZINC ION (three-letter code: ZN) (formula: Zn).

Mol	Chain	Residues	Atoms	ZeroOcc	AltConf
2	B	1	Total Zn 1 1	0	0
2	A	1	Total Zn 1 1	0	0
2	D	1	Total Zn 1 1	0	0
2	C	1	Total Zn 1 1	0	0

- Molecule 3 is POTASSIUM ION (three-letter code: K) (formula: K).

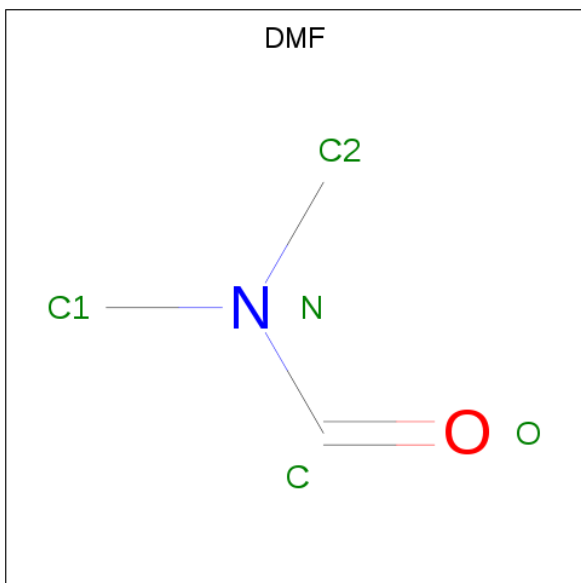
Mol	Chain	Residues	Atoms	ZeroOcc	AltConf
3	B	2	Total K 2 2	0	0
3	A	2	Total K 2 2	0	0
3	D	2	Total K 2 2	0	0
3	C	2	Total K 2 2	0	0

- Molecule 4 is 1-[(4-methoxyphenyl)methyl]-{N}-oxidanyl-indole-6-carboxamide (three-letter code: GKW) (formula: C<sub>17</sub>H<sub>16</sub>N<sub>2</sub>O<sub>3</sub>).



Mol	Chain	Residues	Atoms				ZeroOcc	AltConf
4	A	1	Total	C	N	O	0	0
			22	17	2	3		
4	B	1	Total	C	N	O	0	0
			22	17	2	3		
4	C	1	Total	C	N	O	0	0
			22	17	2	3		
4	D	1	Total	C	N	O	0	0
			22	17	2	3		

- Molecule 5 is DIMETHYLFORMAMIDE (three-letter code: DMF) (formula:  $C_3H_7NO$ ).



Mol	Chain	Residues	Atoms				ZeroOcc	AltConf
5	A	1	Total	C	N	O	0	0
			5	3	1	1		
5	A	1	Total	C	N	O	0	0
			5	3	1	1		
5	A	1	Total	C	N	O	0	0
			5	3	1	1		
5	A	1	Total	C	N	O	0	0
			5	3	1	1		
5	A	1	Total	C	N	O	0	0
			5	3	1	1		
5	B	1	Total	C	N	O	0	0
			5	3	1	1		
5	B	1	Total	C	N	O	0	0
			5	3	1	1		
5	B	1	Total	C	N	O	0	0
			5	3	1	1		
5	B	1	Total	C	N	O	0	0
			5	3	1	1		
5	C	1	Total	C	N	O	0	0
			5	3	1	1		
5	C	1	Total	C	N	O	0	0
			5	3	1	1		
5	C	1	Total	C	N	O	0	0
			5	3	1	1		
5	D	1	Total	C	N	O	0	0
			5	3	1	1		
5	D	1	Total	C	N	O	0	0
			5	3	1	1		

- Molecule 6 is GLYCEROL (three-letter code: GOL) (formula:  $C_3H_8O_3$ ).



Mol	Chain	Residues	Atoms			ZeroOcc	AltConf
6	A	1	Total	C	O	0	0
			6	3	3		
6	A	1	Total	C	O	0	0
			6	3	3		
6	C	1	Total	C	O	0	0
			6	3	3		
6	C	1	Total	C	O	0	0
			6	3	3		
6	C	1	Total	C	O	0	0
			6	3	3		
6	D	1	Total	C	O	0	0
			6	3	3		
6	D	1	Total	C	O	0	0
			6	3	3		

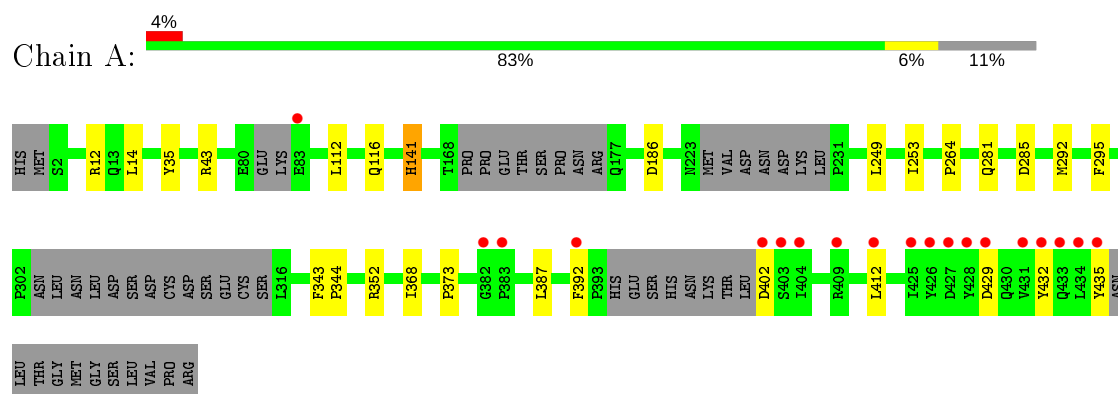
- Molecule 7 is water.

Mol	Chain	Residues	Atoms		ZeroOcc	AltConf
7	A	174	Total	O	0	0
			174	174		
7	B	214	Total	O	0	0
			214	214		
7	C	212	Total	O	0	0
			212	212		
7	D	197	Total	O	0	0
			197	197		

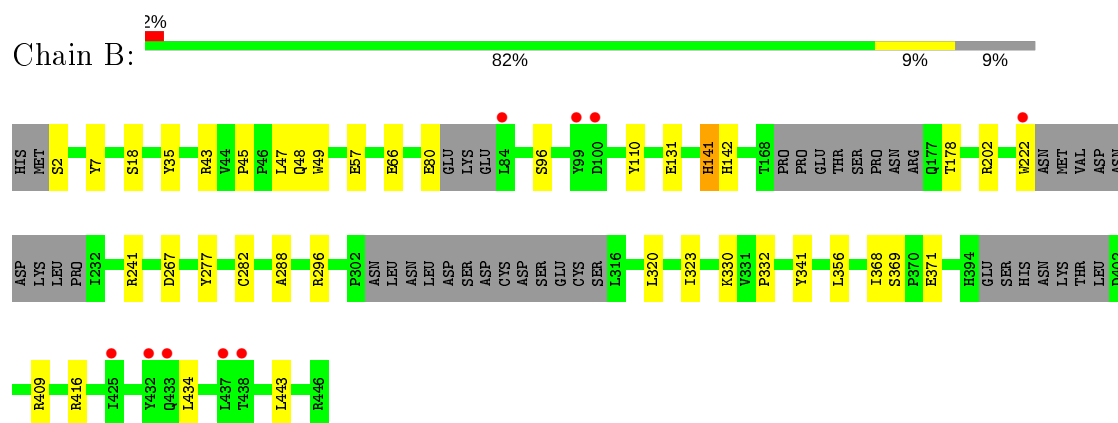
### 3 Residue-property plots [i](#)

These plots are drawn for all protein, RNA and DNA chains in the entry. The first graphic for a chain summarises the proportions of the various outlier classes displayed in the second graphic. The second graphic shows the sequence view annotated by issues in geometry and electron density. Residues are color-coded according to the number of geometric quality criteria for which they contain at least one outlier: green = 0, yellow = 1, orange = 2 and red = 3 or more. A red dot above a residue indicates a poor fit to the electron density ( $RSRZ > 2$ ). Stretches of 2 or more consecutive residues without any outlier are shown as a green connector. Residues present in the sample, but not in the model, are shown in grey.

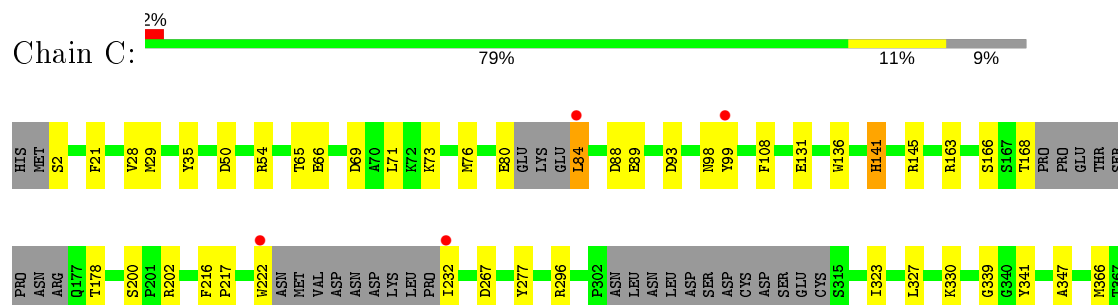
#### • Molecule 1: Histone deacetylase



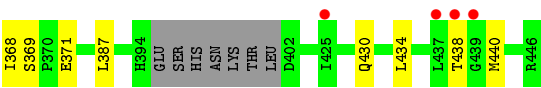
#### • Molecule 1: Histone deacetylase



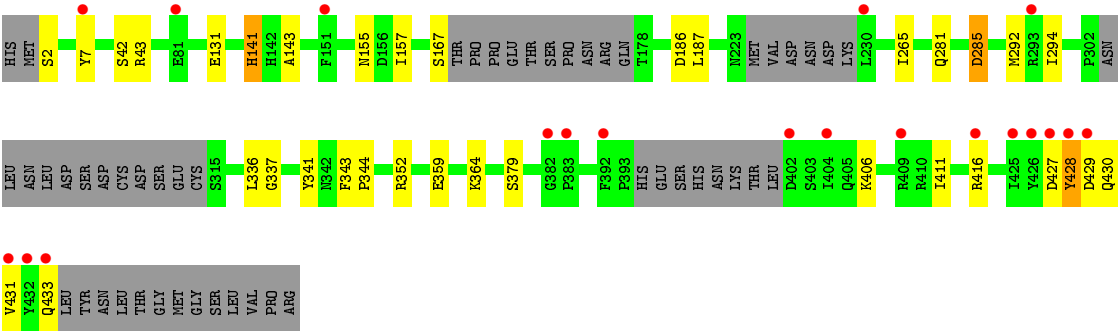
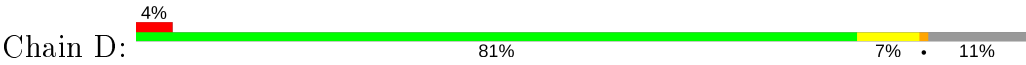
#### • Molecule 1: Histone deacetylase







● Molecule 1: Histone deacetylase



## 4 Data and refinement statistics

Property	Value	Source
Space group	P 1	Depositor
Cell constants a, b, c, $\alpha$ , $\beta$ , $\gamma$	70.60Å 70.67Å 98.17Å 75.83° 78.25° 86.05°	Depositor
Resolution (Å)	43.37 – 1.90 43.69 – 1.90	Depositor EDS
% Data completeness (in resolution range)	97.6 (43.37-1.90) 97.6 (43.69-1.90)	Depositor EDS
$R_{merge}$	0.15	Depositor
$R_{sym}$	(Not available)	Depositor
$\langle I/\sigma(I) \rangle$ <sup>1</sup>	1.08 (at 1.89Å)	Xtriage
Refinement program	PHENIX (1.10.1_2155: ???)	Depositor
R, $R_{free}$	0.211 , 0.265 0.211 , 0.265	Depositor DCC
$R_{free}$ test set	6938 reflections (5.00%)	wwPDB-VP
Wilson B-factor (Å <sup>2</sup> )	22.8	Xtriage
Anisotropy	0.230	Xtriage
Bulk solvent $k_{sol}$ (e/Å <sup>3</sup> ), $B_{sol}$ (Å <sup>2</sup> )	0.35 , 59.3	EDS
L-test for twinning <sup>2</sup>	$\langle  L  \rangle = 0.50$ , $\langle L^2 \rangle = 0.34$	Xtriage
Estimated twinning fraction	0.148 for -k,-h,-l	Xtriage
$F_o, F_c$ correlation	0.94	EDS
Total number of atoms	13896	wwPDB-VP
Average B, all atoms (Å <sup>2</sup> )	30.0	wwPDB-VP

Xtriage's analysis on translational NCS is as follows: *The largest off-origin peak in the Patterson function is 5.19% of the height of the origin peak. No significant pseudotranslation is detected.*

<sup>1</sup>Intensities estimated from amplitudes.

<sup>2</sup>Theoretical values of  $\langle |L| \rangle$ ,  $\langle L^2 \rangle$  for acentric reflections are 0.5, 0.333 respectively for untwinned datasets, and 0.375, 0.2 for perfectly twinned datasets.

## 5 Model quality [i](#)

### 5.1 Standard geometry [i](#)

Bond lengths and bond angles in the following residue types are not validated in this section: GKW, GOL, ZN, K, DMF

The Z score for a bond length (or angle) is the number of standard deviations the observed value is removed from the expected value. A bond length (or angle) with  $|Z| > 5$  is considered an outlier worth inspection. RMSZ is the root-mean-square of all Z scores of the bond lengths (or angles).

Mol	Chain	Bond lengths		Bond angles	
		RMSZ	# Z  >5	RMSZ	# Z  >5
1	A	0.44	0/3277	0.58	0/4455
1	B	0.48	0/3366	0.58	0/4575
1	C	0.48	0/3343	0.58	0/4544
1	D	0.45	0/3280	0.57	1/4459 (0.0%)
All	All	0.46	0/13266	0.57	1/18033 (0.0%)

There are no bond length outliers.

All (1) bond angle outliers are listed below:

Mol	Chain	Res	Type	Atoms	Z	Observed(°)	Ideal(°)
1	D	285	ASP	CB-CG-OD1	5.22	123.00	118.30

There are no chirality outliers.

There are no planarity outliers.

### 5.2 Too-close contacts [i](#)

In the following table, the Non-H and H(model) columns list the number of non-hydrogen atoms and hydrogen atoms in the chain respectively. The H(added) column lists the number of hydrogen atoms added and optimized by MolProbity. The Clashes column lists the number of clashes within the asymmetric unit, whereas Symm-Clashes lists symmetry related clashes.

Mol	Chain	Non-H	H(model)	H(added)	Clashes	Symm-Clashes
1	A	3185	0	3075	23	0
1	B	3259	0	3178	27	0
1	C	3248	0	3154	38	0
1	D	3185	0	3086	22	0
2	A	1	0	0	0	0
2	B	1	0	0	0	0

*Continued on next page...*

*Continued from previous page...*

Mol	Chain	Non-H	H(model)	H(added)	Clashes	Symm-Clashes
2	C	1	0	0	0	0
2	D	1	0	0	0	0
3	A	2	0	0	0	0
3	B	2	0	0	0	0
3	C	2	0	0	0	0
3	D	2	0	0	0	0
4	A	22	0	0	0	0
4	B	22	0	0	3	0
4	C	22	0	0	2	0
4	D	22	0	0	1	0
5	A	30	0	42	3	0
5	B	20	0	28	2	0
5	C	20	0	28	2	0
5	D	10	0	14	1	0
6	A	12	0	16	0	0
6	C	18	0	23	1	0
6	D	12	0	16	0	0
7	A	174	0	0	0	0
7	B	214	0	0	3	0
7	C	212	0	0	10	0
7	D	197	0	0	2	0
All	All	13896	0	12660	109	0

The all-atom clashscore is defined as the number of clashes found per 1000 atoms (including hydrogen atoms). The all-atom clashscore for this structure is 4.

The worst 5 of 109 close contacts within the same asymmetric unit are listed below, sorted by their clash magnitude.

Atom-1	Atom-2	Interatomic distance (Å)	Clash overlap (Å)
1:C:29:MET:HE1	1:C:136:TRP:HD1	1.44	0.82
1:B:356:LEU:HG	7:B:711:HOH:O	1.82	0.79
1:A:12:ARG:HE	5:A:507:DMF:H12	1.49	0.77
1:C:65:THR:OG1	1:C:66:GLU:OE2	2.06	0.72
1:C:339:GLY:HA2	7:C:630:HOH:O	1.92	0.70

There are no symmetry-related clashes.

## 5.3 Torsion angles

### 5.3.1 Protein backbone

In the following table, the Percentiles column shows the percent Ramachandran outliers of the chain as a percentile score with respect to all X-ray entries followed by that with respect to entries of similar resolution.

The Analysed column shows the number of residues for which the backbone conformation was analysed, and the total number of residues.

Mol	Chain	Analysed	Favoured	Allowed	Outliers	Percentiles	
1	A	387/447 (87%)	377 (97%)	10 (3%)	0	100	100
1	B	399/447 (89%)	391 (98%)	8 (2%)	0	100	100
1	C	396/447 (89%)	389 (98%)	6 (2%)	1 (0%)	41	31
1	D	389/447 (87%)	380 (98%)	9 (2%)	0	100	100
All	All	1571/1788 (88%)	1537 (98%)	33 (2%)	1 (0%)	51	43

All (1) Ramachandran outliers are listed below:

Mol	Chain	Res	Type
1	C	99	TYR

### 5.3.2 Protein sidechains

In the following table, the Percentiles column shows the percent sidechain outliers of the chain as a percentile score with respect to all X-ray entries followed by that with respect to entries of similar resolution.

The Analysed column shows the number of residues for which the sidechain conformation was analysed, and the total number of residues.

Mol	Chain	Analysed	Rotameric	Outliers	Percentiles	
1	A	345/392 (88%)	341 (99%)	4 (1%)	71	70
1	B	356/392 (91%)	352 (99%)	4 (1%)	73	73
1	C	353/392 (90%)	343 (97%)	10 (3%)	43	36
1	D	346/392 (88%)	341 (99%)	5 (1%)	67	65
All	All	1400/1568 (89%)	1377 (98%)	23 (2%)	60	60

5 of 23 residues with a non-rotameric sidechain are listed below:

Mol	Chain	Res	Type
1	C	84	LEU
1	C	145	ARG
1	D	379	SER
1	C	141	HIS
1	C	166	SER

Some sidechains can be flipped to improve hydrogen bonding and reduce clashes. There are no such sidechains identified.

### 5.3.3 RNA ⓘ

There are no RNA molecules in this entry.

## 5.4 Non-standard residues in protein, DNA, RNA chains ⓘ

There are no non-standard protein/DNA/RNA residues in this entry.

## 5.5 Carbohydrates ⓘ

There are no carbohydrates in this entry.

## 5.6 Ligand geometry ⓘ

Of 39 ligands modelled in this entry, 12 are monoatomic - leaving 27 for Mogul analysis.

In the following table, the Counts columns list the number of bonds (or angles) for which Mogul statistics could be retrieved, the number of bonds (or angles) that are observed in the model and the number of bonds (or angles) that are defined in the Chemical Component Dictionary. The Link column lists molecule types, if any, to which the group is linked. The Z score for a bond length (or angle) is the number of standard deviations the observed value is removed from the expected value. A bond length (or angle) with  $|Z| > 2$  is considered an outlier worth inspection. RMSZ is the root-mean-square of all Z scores of the bond lengths (or angles).

Mol	Type	Chain	Res	Link	Bond lengths			Bond angles		
					Counts	RMSZ	$\# Z  > 2$	Counts	RMSZ	$\# Z  > 2$
5	DMF	A	507	-	4,4,4	0.27	0	4,4,4	0.27	0
4	GKW	A	504	2	24,24,24	2.46	4 (16%)	30,33,33	2.90	6 (20%)
5	DMF	C	506	-	4,4,4	0.28	0	4,4,4	0.32	0
4	GKW	B	504	2	24,24,24	2.49	5 (20%)	30,33,33	2.52	8 (26%)
6	GOL	A	511	-	5,5,5	0.37	0	5,5,5	0.23	0
5	DMF	D	505	-	4,4,4	0.32	0	4,4,4	0.46	0

Mol	Type	Chain	Res	Link	Bond lengths			Bond angles		
					Counts	RMSZ	# Z  > 2	Counts	RMSZ	# Z  > 2
5	DMF	A	509	-	4,4,4	0.49	0	4,4,4	0.25	0
4	GKW	C	504	2	24,24,24	2.54	6 (25%)	30,33,33	2.08	7 (23%)
5	DMF	B	506	-	4,4,4	0.35	0	4,4,4	0.38	0
6	GOL	A	512	-	5,5,5	0.29	0	5,5,5	0.33	0
5	DMF	A	506	-	4,4,4	0.30	0	4,4,4	0.53	0
5	DMF	B	508	-	4,4,4	0.33	0	4,4,4	0.61	0
6	GOL	D	507	-	5,5,5	0.35	0	5,5,5	0.49	0
5	DMF	A	508	-	4,4,4	0.35	0	4,4,4	0.41	0
5	DMF	C	507	-	4,4,4	0.26	0	4,4,4	0.35	0
5	DMF	C	508	-	4,4,4	0.33	0	4,4,4	0.25	0
5	DMF	A	510	-	4,4,4	0.29	0	4,4,4	0.39	0
6	GOL	D	508	-	5,5,5	0.34	0	5,5,5	0.58	0
6	GOL	C	511	-	5,5,5	0.32	0	5,5,5	0.74	0
5	DMF	C	505	-	4,4,4	0.33	0	4,4,4	0.41	0
5	DMF	B	507	-	4,4,4	0.32	0	4,4,4	0.35	0
5	DMF	B	505	-	4,4,4	0.32	0	4,4,4	0.50	0
5	DMF	D	506	-	4,4,4	0.27	0	4,4,4	0.40	0
4	GKW	D	504	2	24,24,24	2.43	6 (25%)	30,33,33	2.77	7 (23%)
5	DMF	A	505	-	4,4,4	0.39	0	4,4,4	0.41	0
6	GOL	C	510	-	5,5,5	0.35	0	5,5,5	0.37	0
6	GOL	C	509	-	5,5,5	0.40	0	5,5,5	0.34	0

In the following table, the Chirals column lists the number of chiral outliers, the number of chiral centers analysed, the number of these observed in the model and the number defined in the Chemical Component Dictionary. Similar counts are reported in the Torsion and Rings columns. '-' means no outliers of that kind were identified.

Mol	Type	Chain	Res	Link	Chirals	Torsions	Rings
5	DMF	A	507	-	-	0/2/2/2	-
4	GKW	A	504	2	-	2/12/12/12	0/3/3/3
5	DMF	C	506	-	-	0/2/2/2	-
4	GKW	B	504	2	-	4/12/12/12	0/3/3/3
6	GOL	A	511	-	-	2/4/4/4	-
5	DMF	D	505	-	-	0/2/2/2	-
5	DMF	A	509	-	-	0/2/2/2	-
4	GKW	C	504	2	-	4/12/12/12	0/3/3/3
5	DMF	B	506	-	-	0/2/2/2	-
6	GOL	A	512	-	-	2/4/4/4	-
5	DMF	A	506	-	-	0/2/2/2	-
5	DMF	B	508	-	-	0/2/2/2	-
6	GOL	D	507	-	-	4/4/4/4	-

Continued on next page...

*Continued from previous page...*

Mol	Type	Chain	Res	Link	Chirals	Torsions	Rings
5	DMF	A	508	-	-	2/2/2/2	-
5	DMF	C	507	-	-	2/2/2/2	-
5	DMF	C	508	-	-	2/2/2/2	-
5	DMF	A	510	-	-	2/2/2/2	-
6	GOL	D	508	-	-	0/4/4/4	-
6	GOL	C	511	-	-	2/4/4/4	-
5	DMF	C	505	-	-	2/2/2/2	-
5	DMF	B	507	-	-	2/2/2/2	-
5	DMF	B	505	-	-	2/2/2/2	-
5	DMF	D	506	-	-	2/2/2/2	-
4	GKW	D	504	2	-	1/12/12/12	0/3/3/3
5	DMF	A	505	-	-	0/2/2/2	-
6	GOL	C	510	-	-	4/4/4/4	-
6	GOL	C	509	-	-	0/4/4/4	-

The worst 5 of 21 bond length outliers are listed below:

Mol	Chain	Res	Type	Atoms	Z	Observed(Å)	Ideal(Å)
4	C	504	GKW	C15-N17	9.32	1.44	1.32
4	B	504	GKW	C15-N17	9.03	1.44	1.32
4	D	504	GKW	C15-N17	8.79	1.44	1.32
4	A	504	GKW	C15-N17	8.71	1.44	1.32
4	B	504	GKW	O18-N17	-4.50	1.28	1.40

The worst 5 of 28 bond angle outliers are listed below:

Mol	Chain	Res	Type	Atoms	Z	Observed(°)	Ideal(°)
4	A	504	GKW	C06-C07-N08	10.95	130.59	112.71
4	D	504	GKW	C06-C07-N08	9.17	127.69	112.71
4	B	504	GKW	C06-C07-N08	8.69	126.90	112.71
4	D	504	GKW	C07-N08-C09	7.73	136.12	124.73
4	A	504	GKW	C07-N08-C09	7.50	135.78	124.73

There are no chirality outliers.

5 of 41 torsion outliers are listed below:

Mol	Chain	Res	Type	Atoms
6	A	511	GOL	O1-C1-C2-C3
6	D	507	GOL	C1-C2-C3-O3

*Continued on next page...*



*Continued from previous page...*

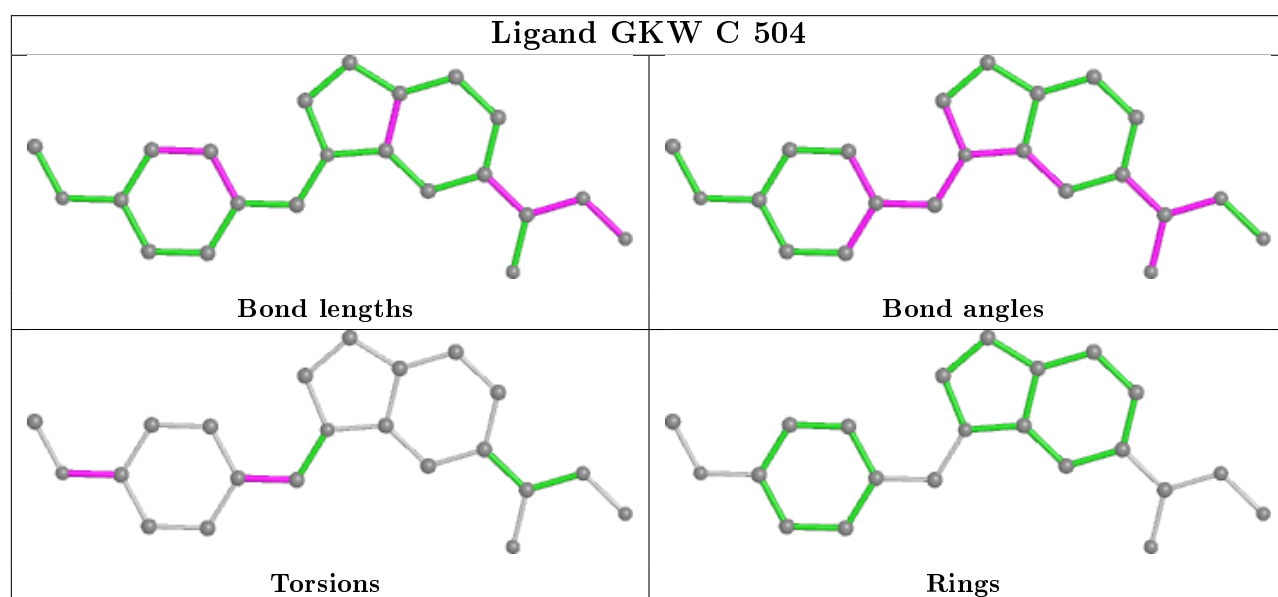
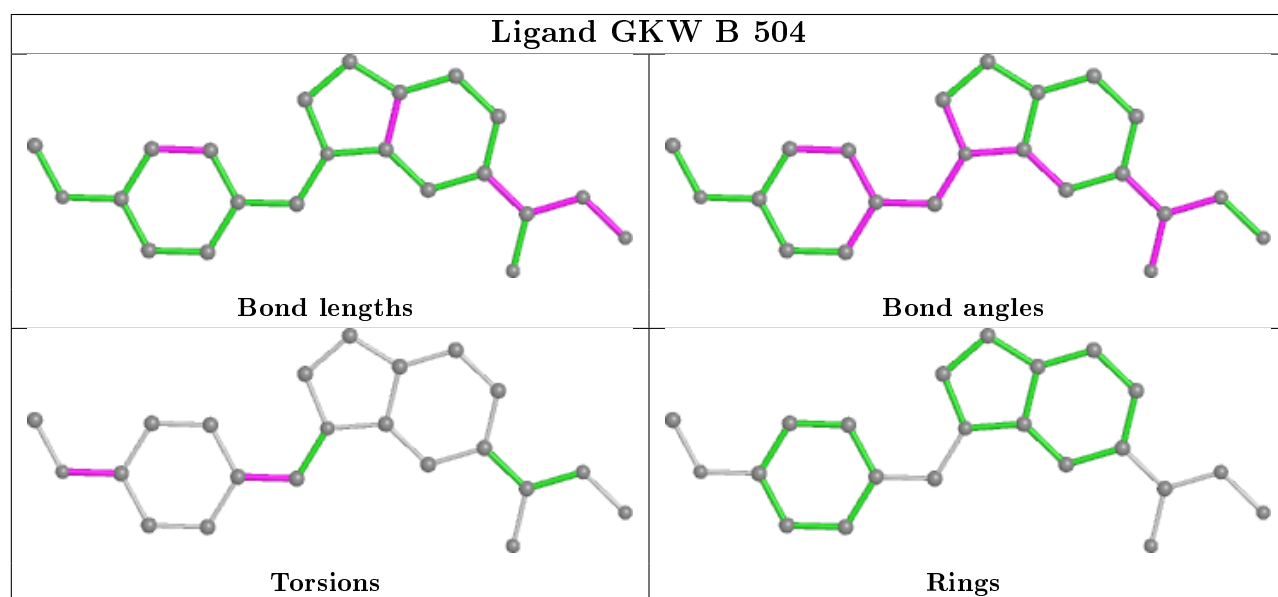
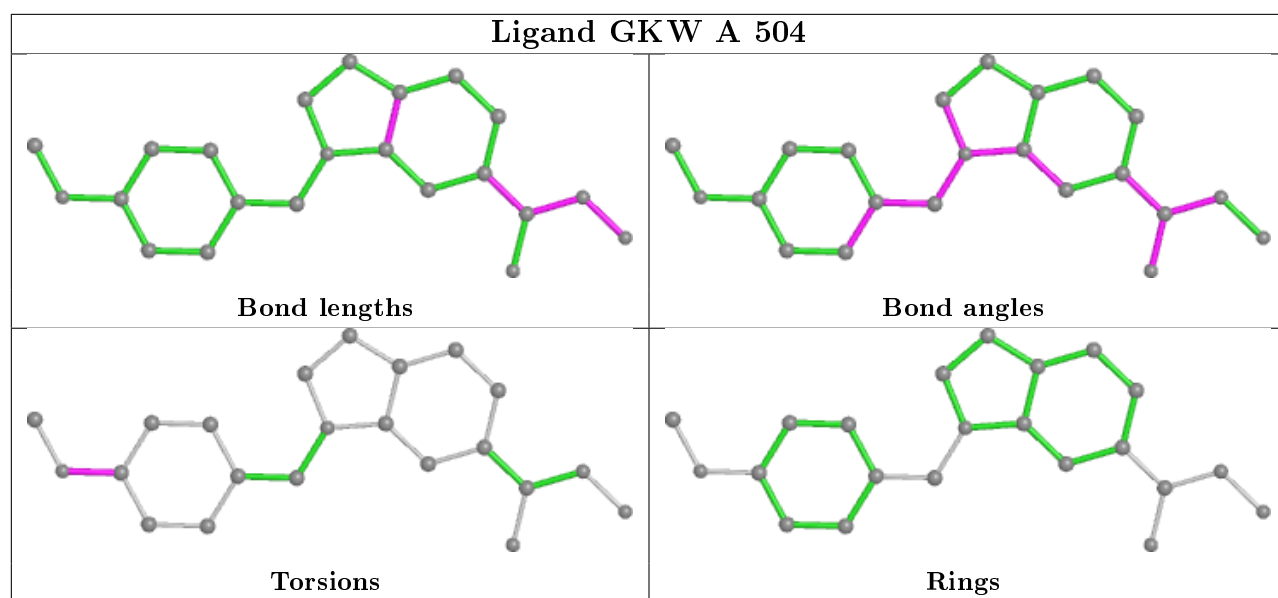
Mol	Chain	Res	Type	Atoms
6	A	512	GOL	O1-C1-C2-C3
6	C	511	GOL	O1-C1-C2-C3
6	C	510	GOL	O1-C1-C2-C3

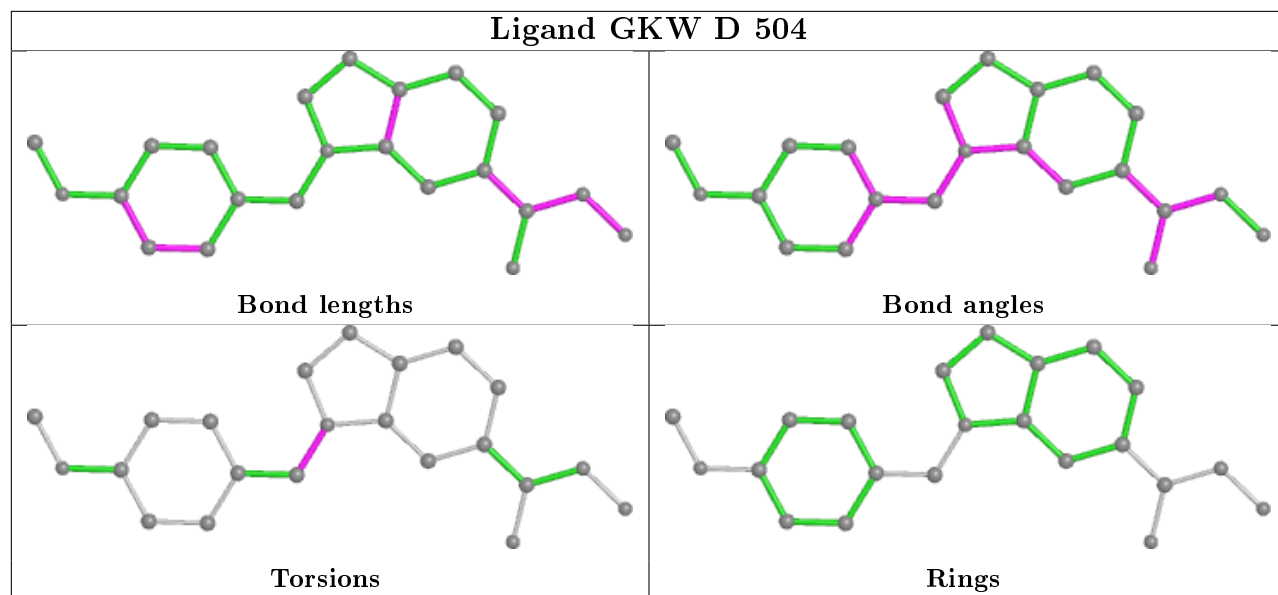
There are no ring outliers.

12 monomers are involved in 15 short contacts:

Mol	Chain	Res	Type	Clashes	Symm-Clashes
5	A	507	DMF	1	0
5	C	506	DMF	1	0
4	B	504	GKW	3	0
4	C	504	GKW	2	0
5	B	508	DMF	1	0
5	A	508	DMF	1	0
5	C	505	DMF	1	0
5	B	507	DMF	1	0
5	D	506	DMF	1	0
4	D	504	GKW	1	0
5	A	505	DMF	1	0
6	C	509	GOL	1	0

The following is a two-dimensional graphical depiction of Mogul quality analysis of bond lengths, bond angles, torsion angles, and ring geometry for all instances of the Ligand of Interest. In addition, ligands with molecular weight > 250 and outliers as shown on the validation Tables will also be included. For torsion angles, if less than 5% of the Mogul distribution of torsion angles is within 10 degrees of the torsion angle in question, then that torsion angle is considered an outlier. Any bond that is central to one or more torsion angles identified as an outlier by Mogul will be highlighted in the graph. For rings, the root-mean-square deviation (RMSD) between the ring in question and similar rings identified by Mogul is calculated over all ring torsion angles. If the average RMSD is greater than 60 degrees and the minimal RMSD between the ring in question and any Mogul-identified rings is also greater than 60 degrees, then that ring is considered an outlier. The outliers are highlighted in purple. The color gray indicates Mogul did not find sufficient equivalents in the CSD to analyse the geometry.





## 5.7 Other polymers [i](#)

There are no such residues in this entry.

## 5.8 Polymer linkage issues [i](#)

There are no chain breaks in this entry.

## 6 Fit of model and data [i](#)

### 6.1 Protein, DNA and RNA chains [i](#)

In the following table, the column labelled ‘#RSRZ> 2’ contains the number (and percentage) of RSRZ outliers, followed by percent RSRZ outliers for the chain as percentile scores relative to all X-ray entries and entries of similar resolution. The OWAB column contains the minimum, median, 95<sup>th</sup> percentile and maximum values of the occupancy-weighted average B-factor per residue. The column labelled ‘Q< 0.9’ lists the number of (and percentage) of residues with an average occupancy less than 0.9.

Mol	Chain	Analysed	<RSRZ>	#RSRZ>2	OWAB(Å <sup>2</sup> )	Q<0.9
1	A	396/447 (88%)	0.24	19 (4%) 30 33	14, 26, 60, 105	0
1	B	405/447 (90%)	0.09	9 (2%) 62 64	12, 24, 48, 78	0
1	C	406/447 (90%)	0.11	8 (1%) 65 68	14, 24, 47, 82	0
1	D	396/447 (88%)	0.25	20 (5%) 28 31	14, 26, 57, 114	0
All	All	1603/1788 (89%)	0.17	56 (3%) 44 47	12, 25, 52, 114	0

The worst 5 of 56 RSRZ outliers are listed below:

Mol	Chain	Res	Type	RSRZ
1	A	428	TYR	9.7
1	D	432	TYR	9.1
1	A	432	TYR	8.6
1	D	426	TYR	6.6
1	D	428	TYR	6.4

### 6.2 Non-standard residues in protein, DNA, RNA chains [i](#)

There are no non-standard protein/DNA/RNA residues in this entry.

### 6.3 Carbohydrates [i](#)

There are no carbohydrates in this entry.

### 6.4 Ligands [i](#)

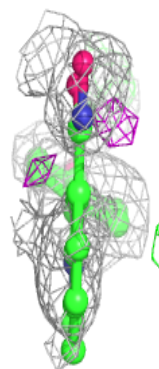
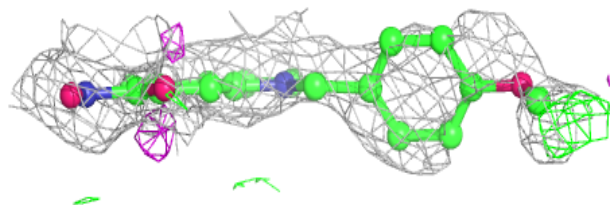
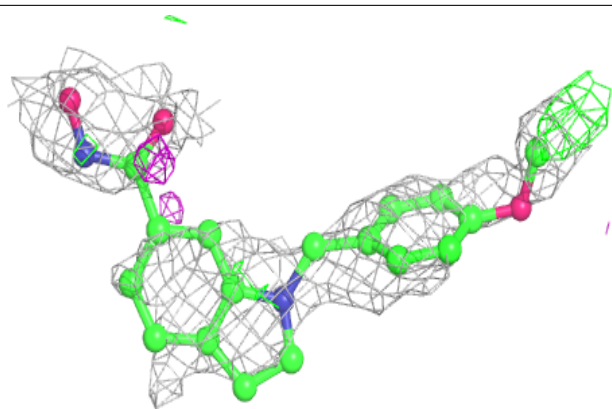
In the following table, the Atoms column lists the number of modelled atoms in the group and the number defined in the chemical component dictionary. The B-factors column lists the minimum, median, 95<sup>th</sup> percentile and maximum values of B factors of atoms in the group. The column labelled ‘Q< 0.9’ lists the number of atoms with occupancy less than 0.9.

Mol	Type	Chain	Res	Atoms	RSCC	RSR	B-factors( $\text{\AA}^2$ )	Q<0.9
6	GOL	C	509	6/6	0.38	0.24	51,55,67,80	0
5	DMF	C	508	5/5	0.68	0.29	40,43,56,76	0
5	DMF	B	505	5/5	0.69	0.20	45,58,58,59	0
4	GKW	A	504	22/22	0.72	0.26	38,75,80,81	0
6	GOL	A	512	6/6	0.74	0.24	45,48,53,57	0
4	GKW	B	504	22/22	0.75	0.39	33,85,98,100	0
6	GOL	C	510	6/6	0.77	0.18	48,54,56,58	0
4	GKW	C	504	22/22	0.78	0.36	31,74,101,105	0
4	GKW	D	504	22/22	0.79	0.26	37,77,84,88	0
5	DMF	D	505	5/5	0.83	0.19	59,61,64,68	0
5	DMF	A	505	5/5	0.84	0.18	36,45,51,53	0
5	DMF	A	508	5/5	0.85	0.13	49,53,55,56	0
5	DMF	C	506	5/5	0.86	0.16	35,36,37,40	0
5	DMF	B	508	5/5	0.88	0.18	29,30,37,43	0
5	DMF	A	509	5/5	0.89	0.12	23,27,34,37	0
5	DMF	B	506	5/5	0.89	0.14	28,32,34,35	0
5	DMF	C	507	5/5	0.90	0.20	28,46,52,57	0
5	DMF	A	507	5/5	0.90	0.11	55,55,57,62	0
6	GOL	A	511	6/6	0.92	0.11	27,30,36,39	0
6	GOL	D	507	6/6	0.92	0.12	27,37,38,40	0
6	GOL	D	508	6/6	0.92	0.23	37,46,52,53	0
6	GOL	C	511	6/6	0.93	0.10	22,27,32,33	0
5	DMF	B	507	5/5	0.93	0.20	36,41,46,52	0
5	DMF	A	510	5/5	0.93	0.18	46,47,49,55	0
5	DMF	A	506	5/5	0.93	0.14	34,38,53,57	0
5	DMF	C	505	5/5	0.94	0.18	36,39,40,42	0
5	DMF	D	506	5/5	0.95	0.17	24,34,49,56	0
3	K	C	502	1/1	0.99	0.09	29,29,29,29	0
3	K	C	503	1/1	0.99	0.08	18,18,18,18	0
3	K	B	502	1/1	0.99	0.06	28,28,28,28	0
3	K	B	503	1/1	0.99	0.09	18,18,18,18	0
3	K	D	502	1/1	0.99	0.09	29,29,29,29	0
3	K	A	503	1/1	0.99	0.06	29,29,29,29	0
2	ZN	D	501	1/1	1.00	0.04	23,23,23,23	0
2	ZN	C	501	1/1	1.00	0.07	21,21,21,21	0
3	K	D	503	1/1	1.00	0.08	18,18,18,18	0
2	ZN	A	501	1/1	1.00	0.05	22,22,22,22	0
2	ZN	B	501	1/1	1.00	0.06	24,24,24,24	0
3	K	A	502	1/1	1.00	0.08	15,15,15,15	0

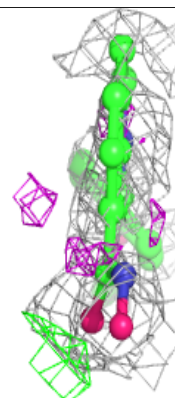
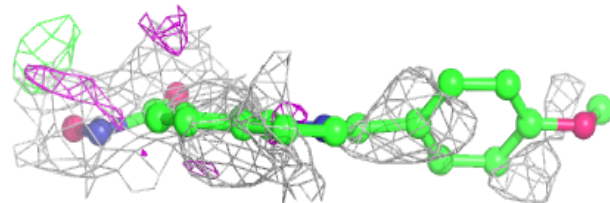
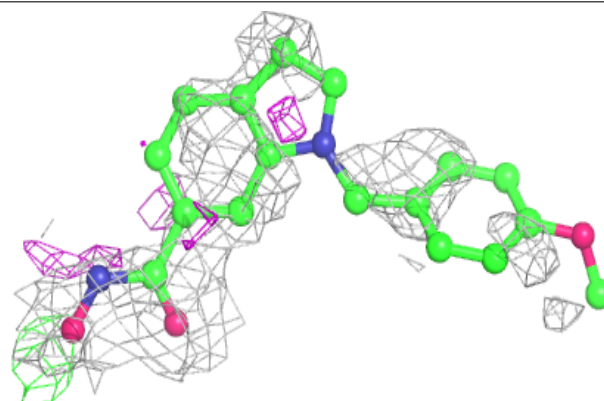
The following is a graphical depiction of the model fit to experimental electron density of all instances of the Ligand of Interest. In addition, ligands with molecular weight > 250 and outliers as shown on the geometry validation Tables will also be included. Each fit is shown from different orientation to approximate a three-dimensional view.

**Electron density around GKW A 504:**

$2mF_o-DF_c$  (at 0.7 rmsd) in gray  
 $mF_o-DF_c$  (at 3 rmsd) in purple (negative)  
and green (positive)

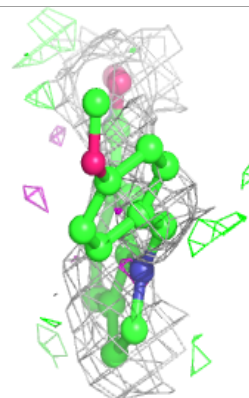
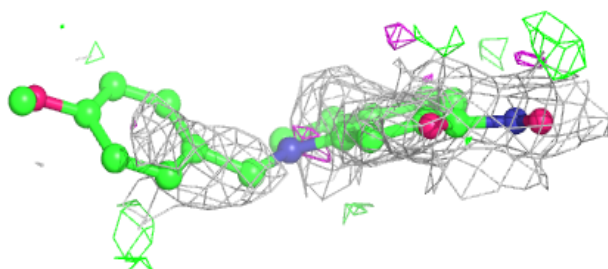
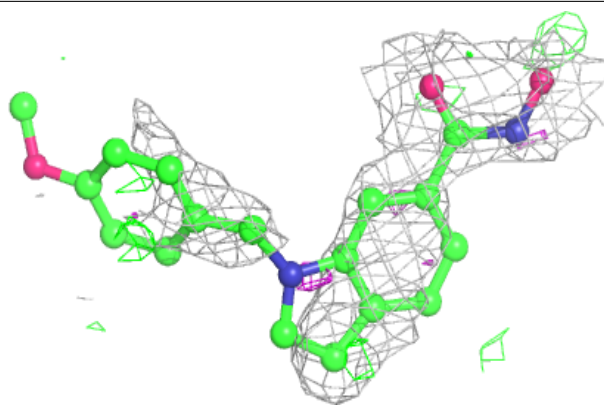
**Electron density around GKW B 504:**

$2mF_o-DF_c$  (at 0.7 rmsd) in gray  
 $mF_o-DF_c$  (at 3 rmsd) in purple (negative)  
and green (positive)

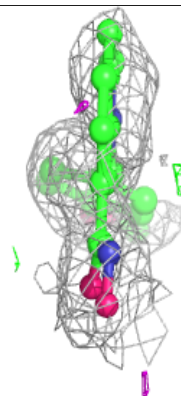
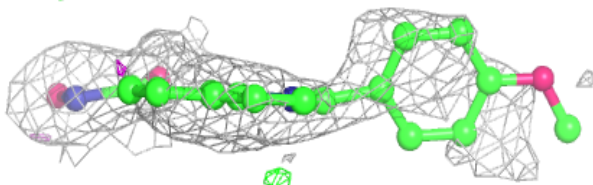
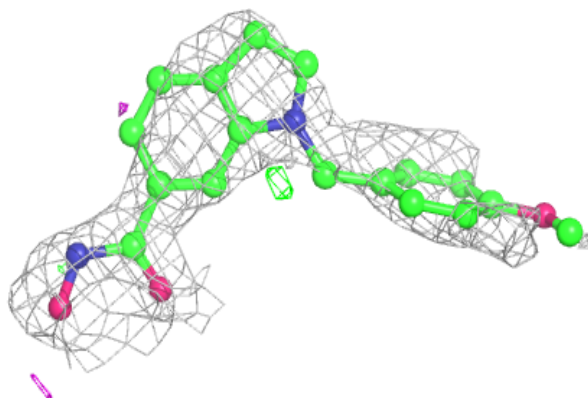


**Electron density around GKW C 504:**

$2mF_o-DF_c$  (at 0.7 rmsd) in gray  
 $mF_o-DF_c$  (at 3 rmsd) in purple (negative)  
and green (positive)

**Electron density around GKW D 504:**

$2mF_o-DF_c$  (at 0.7 rmsd) in gray  
 $mF_o-DF_c$  (at 3 rmsd) in purple (negative)  
and green (positive)



## 6.5 Other polymers [i](#)

There are no such residues in this entry.