



wwPDB X-ray Structure Validation Summary Report ⓘ

Jun 7, 2020 – 02:52 am BST

PDB ID : 6HTD
Title : Yeast 20S proteasome with human beta2c (S171G) in complex with 4
Authors : Huber, E.M.; Groll, M.
Deposited on : 2018-10-03
Resolution : 3.00 Å(reported)

This is a wwPDB X-ray Structure Validation Summary Report for a publicly released PDB entry.

We welcome your comments at validation@mail.wwpdb.org

A user guide is available at

<https://www.wwpdb.org/validation/2017/XrayValidationReportHelp>

with specific help available everywhere you see the ⓘ symbol.

The following versions of software and data (see [references ⓘ](#)) were used in the production of this report:

MolProbity : 4.02b-467
Mogul : 1.8.5 (274361), CSD as541be (2020)
Xtriage (Phenix) : 1.13
EDS : 2.11
buster-report : 1.1.7 (2018)
Percentile statistics : 20191225.v01 (using entries in the PDB archive December 25th 2019)
Refmac : 5.8.0158
CCP4 : 7.0.044 (Gargrove)
Ideal geometry (proteins) : Engh & Huber (2001)
Ideal geometry (DNA, RNA) : Parkinson et al. (1996)
Validation Pipeline (wwPDB-VP) : 2.11

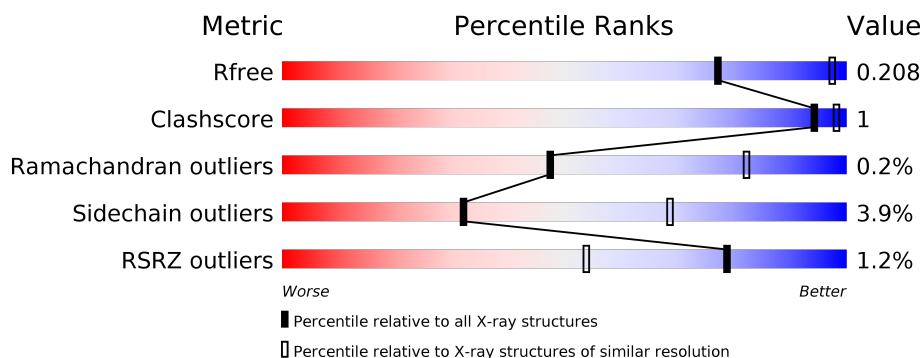
1 Overall quality at a glance

The following experimental techniques were used to determine the structure:

X-RAY DIFFRACTION

The reported resolution of this entry is 3.00 Å.

Percentile scores (ranging between 0-100) for global validation metrics of the entry are shown in the following graphic. The table shows the number of entries on which the scores are based.



Metric	Whole archive (#Entries)	Similar resolution (#Entries, resolution range(Å))
R_{free}	130704	2092 (3.00-3.00)
Clashscore	141614	2416 (3.00-3.00)
Ramachandran outliers	138981	2333 (3.00-3.00)
Sidechain outliers	138945	2336 (3.00-3.00)
RSRZ outliers	127900	1990 (3.00-3.00)

The table below summarises the geometric issues observed across the polymeric chains and their fit to the electron density. The red, orange, yellow and green segments on the lower bar indicate the fraction of residues that contain outliers for ≥ 3 , 2, 1 and 0 types of geometric quality criteria respectively. A grey segment represents the fraction of residues that are not modelled. The numeric value for each fraction is indicated below the corresponding segment, with a dot representing fractions $\leq 5\%$. The upper red bar (where present) indicates the fraction of residues that have poor fit to the electron density. The numeric value is given above the bar.

Mol	Chain	Length	Quality of chain
1	A	250	<div> <div style="width: 93%;"></div> <div>93%</div> </div>
1	O	250	<div> <div style="width: 93%;"></div> <div>93%</div> </div>
2	B	258	<div> <div style="width: 88%;"></div> <div>88%</div> </div>
2	P	258	<div> <div style="width: 89%;"></div> <div>89%</div> </div>
3	C	254	<div> <div style="width: 88%;"></div> <div>88%</div> </div>
3	Q	254	<div> <div style="width: 88%;"></div> <div>88%</div> </div>

Continued on next page...

Continued from previous page...

Mol	Chain	Length	Quality of chain
4	D	260	
4	R	260	
5	E	234	
5	S	234	
6	F	288	
6	T	288	
7	G	252	
7	U	252	
8	H	234	
8	V	234	
9	I	205	
9	W	205	
10	J	198	
10	X	198	
11	K	212	
11	Y	212	
12	L	222	
12	Z	222	
13	M	246	
13	a	246	
14	N	196	
14	b	196	

2 Entry composition

There are 19 unique types of molecules in this entry. The entry contains 49451 atoms, of which 0 are hydrogens and 0 are deuteriums.

In the tables below, the ZeroOcc column contains the number of atoms modelled with zero occupancy, the AltConf column contains the number of residues with at least one atom in alternate conformation and the Trace column contains the number of residues modelled with at most 2 atoms.

- Molecule 1 is a protein called Proteasome subunit alpha type-2.

Mol	Chain	Residues	Atoms					ZeroOcc	AltConf	Trace
1	A	240	Total	C	N	O	S	0	0	0
			1842	1171	305	362	4			
1	O	240	Total	C	N	O	S	0	0	0
			1842	1171	305	362	4			

- Molecule 2 is a protein called Proteasome subunit alpha type-3.

Mol	Chain	Residues	Atoms					ZeroOcc	AltConf	Trace
2	B	244	Total	C	N	O	S	0	0	0
			1904	1201	321	379	3			
2	P	244	Total	C	N	O	S	0	0	0
			1904	1201	321	379	3			

- Molecule 3 is a protein called Proteasome subunit alpha type-4.

Mol	Chain	Residues	Atoms					ZeroOcc	AltConf	Trace
3	C	240	Total	C	N	O	S	0	0	0
			1881	1176	329	372	4			
3	Q	240	Total	C	N	O	S	0	0	0
			1881	1176	329	372	4			

- Molecule 4 is a protein called Proteasome subunit alpha type-5.

Mol	Chain	Residues	Atoms					ZeroOcc	AltConf	Trace
4	D	235	Total	C	N	O	S	0	0	0
			1813	1136	304	366	7			
4	R	235	Total	C	N	O	S	0	0	0
			1813	1136	304	366	7			

- Molecule 5 is a protein called Proteasome subunit alpha type-6.

Mol	Chain	Residues	Atoms					ZeroOcc	AltConf	Trace
5	E	231	Total	C	N	O	S	0	0	0
			1773	1114	307	348	4			
5	S	231	Total	C	N	O	S	0	0	0
			1773	1114	307	348	4			

- Molecule 6 is a protein called Probable proteasome subunit alpha type-7.

Mol	Chain	Residues	Atoms					ZeroOcc	AltConf	Trace
6	F	243	Total	C	N	O	S	0	0	0
			1892	1203	329	356	4			
6	T	243	Total	C	N	O	S	0	0	0
			1892	1203	329	356	4			

- Molecule 7 is a protein called Proteasome subunit alpha type-1.

Mol	Chain	Residues	Atoms					ZeroOcc	AltConf	Trace
7	G	241	Total	C	N	O	S	0	0	0
			1907	1214	320	365	8			
7	U	241	Total	C	N	O	S	0	0	0
			1907	1214	320	365	8			

- Molecule 8 is a protein called Proteasome subunit beta type-7.

Mol	Chain	Residues	Atoms					ZeroOcc	AltConf	Trace
8	H	219	Total	C	N	O	S	0	0	0
			1648	1038	282	316	12			
8	V	219	Total	C	N	O	S	0	0	0
			1648	1038	282	316	12			

There are 2 discrepancies between the modelled and reference sequences:

Chain	Residue	Modelled	Actual	Comment	Reference
H	171	GLY	SER	engineered mutation	UNP Q99436
V	171	GLY	SER	engineered mutation	UNP Q99436

- Molecule 9 is a protein called Proteasome subunit beta type-3.

Mol	Chain	Residues	Atoms					ZeroOcc	AltConf	Trace
9	I	204	Total	C	N	O	S	0	0	0
			1581	1010	258	305	8			
9	W	204	Total	C	N	O	S	0	0	0
			1581	1010	258	305	8			

- Molecule 10 is a protein called Proteasome subunit beta type-4.

Mol	Chain	Residues	Atoms					ZeroOcc	AltConf	Trace
10	J	195	Total	C	N	O	S	0	0	0
			1561	992	264	299	6			
10	X	195	Total	C	N	O	S	0	0	0
			1561	992	264	299	6			

- Molecule 11 is a protein called Proteasome subunit beta type-5.

Mol	Chain	Residues	Atoms					ZeroOcc	AltConf	Trace
11	K	212	Total	C	N	O	S	0	0	0
			1644	1045	280	312	7			
11	Y	212	Total	C	N	O	S	0	0	0
			1644	1045	280	312	7			

- Molecule 12 is a protein called Proteasome subunit beta type-6.

Mol	Chain	Residues	Atoms					ZeroOcc	AltConf	Trace
12	L	222	Total	C	N	O	S	0	0	0
			1757	1115	303	335	4			
12	Z	222	Total	C	N	O	S	0	0	0
			1757	1115	303	335	4			

- Molecule 13 is a protein called Proteasome subunit beta type-7.

Mol	Chain	Residues	Atoms					ZeroOcc	AltConf	Trace
13	M	224	Total	C	N	O	S	0	0	0
			1753	1108	300	338	7			
13	a	224	Total	C	N	O	S	0	0	0
			1753	1108	300	338	7			

- Molecule 14 is a protein called Proteasome subunit beta type-1.

Mol	Chain	Residues	Atoms					ZeroOcc	AltConf	Trace
14	N	196	Total	C	N	O	S	0	0	0
			1512	955	250	300	7			
14	b	196	Total	C	N	O	S	0	0	0
			1512	955	250	300	7			

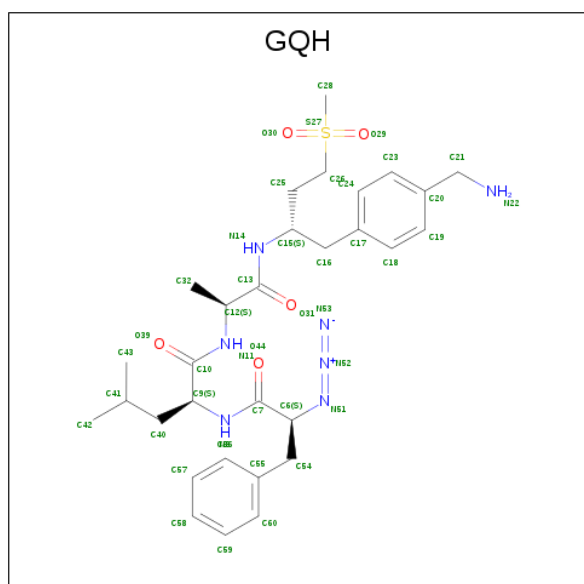
- Molecule 15 is MAGNESIUM ION (three-letter code: MG) (formula: Mg).

Mol	Chain	Residues	Atoms	ZeroOcc	AltConf
15	G	1	Total Mg 1 1	0	0
15	K	1	Total Mg 1 1	0	0
15	I	1	Total Mg 1 1	0	0
15	V	1	Total Mg 1 1	0	0
15	W	1	Total Mg 1 1	0	0
15	Z	1	Total Mg 1 1	0	0
15	N	1	Total Mg 1 1	0	0
15	Y	1	Total Mg 1 1	0	0

- Molecule 16 is CHLORIDE ION (three-letter code: CL) (formula: Cl).

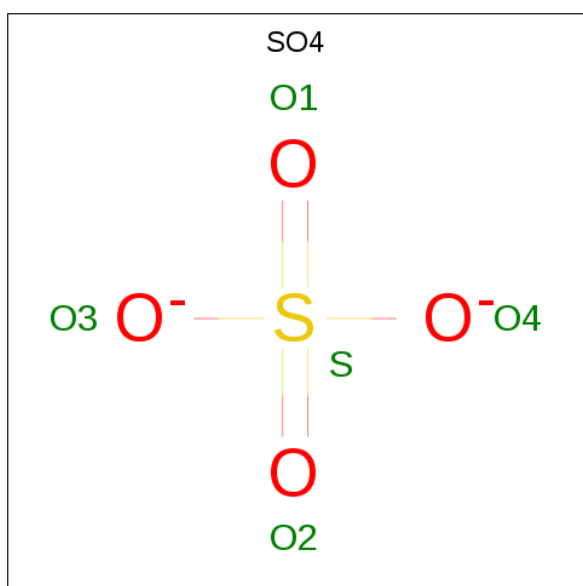
Mol	Chain	Residues	Atoms	ZeroOcc	AltConf
16	G	1	Total Cl 1 1	0	0
16	U	1	Total Cl 1 1	0	0

- Molecule 17 is (2 {S})- {N}-[(2 {S})-1-[(2 {S})-1-[4-(aminomethyl)phenyl]-4-methylsulfonylbutan-2-yl]amino]-1-oxidanylidene-propan-2-yl]-2-[(2 {S})-2-azido-3-phenyl-propanoyl]amino]-4-methyl-pentanamide (three-letter code: GQH) (formula: C₃₀H₄₃N₇O₅S).



Mol	Chain	Residues	Atoms					ZeroOcc	AltConf
17	H	1	Total	C	N	O	S	0	0
			43	30	7	5	1		
17	K	1	Total	C	N	O	S	0	0
			43	30	7	5	1		
17	V	1	Total	C	N	O	S	0	0
			43	30	7	5	1		
17	Y	1	Total	C	N	O	S	0	0
			43	30	7	5	1		

- Molecule 18 is SULFATE ION (three-letter code: SO4) (formula: O₄S).



Mol	Chain	Residues	Atoms			ZeroOcc	AltConf
18	N	1	Total	O	S	0	0
			5	4	1		
18	b	1	Total	O	S	0	0
			5	4	1		

- Molecule 19 is water.

Mol	Chain	Residues	Atoms		ZeroOcc	AltConf
19	A	9	Total	O	0	0
			9	9		
19	B	13	Total	O	0	0
			13	13		
19	C	10	Total	O	0	0
			10	10		
19	D	10	Total	O	0	0
			10	10		

Continued on next page...

Continued from previous page...

Mol	Chain	Residues	Atoms	ZeroOcc	AltConf
19	E	9	Total O 9 9	0	0
19	F	12	Total O 12 12	0	0
19	G	11	Total O 11 11	0	0
19	H	18	Total O 18 18	0	0
19	I	10	Total O 10 10	0	0
19	J	12	Total O 12 12	0	0
19	K	16	Total O 16 16	0	0
19	L	10	Total O 10 10	0	0
19	M	20	Total O 20 20	0	0
19	N	12	Total O 12 12	0	0
19	O	4	Total O 4 4	0	0
19	P	11	Total O 11 11	0	0
19	Q	9	Total O 9 9	0	0
19	R	3	Total O 3 3	0	0
19	S	8	Total O 8 8	0	0
19	T	8	Total O 8 8	0	0
19	U	9	Total O 9 9	0	0
19	V	11	Total O 11 11	0	0
19	W	9	Total O 9 9	0	0
19	X	19	Total O 19 19	0	0
19	Y	20	Total O 20 20	0	0

Continued on next page...

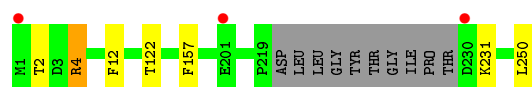
Continued from previous page...

Mol	Chain	Residues	Atoms		ZeroOcc	AltConf
19	Z	10	Total	O	0	0
			10	10		
19	a	15	Total	O	0	0
			15	15		
19	b	15	Total	O	0	0
			15	15		

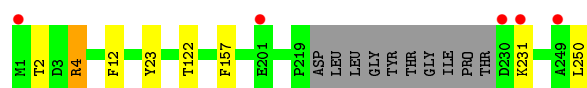
3 Residue-property plots [i](#)

These plots are drawn for all protein, RNA and DNA chains in the entry. The first graphic for a chain summarises the proportions of the various outlier classes displayed in the second graphic. The second graphic shows the sequence view annotated by issues in geometry and electron density. Residues are color-coded according to the number of geometric quality criteria for which they contain at least one outlier: green = 0, yellow = 1, orange = 2 and red = 3 or more. A red dot above a residue indicates a poor fit to the electron density ($RSRZ > 2$). Stretches of 2 or more consecutive residues without any outlier are shown as a green connector. Residues present in the sample, but not in the model, are shown in grey.

- Molecule 1: Proteasome subunit alpha type-2



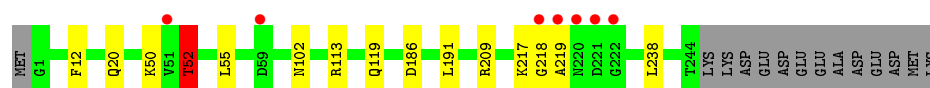
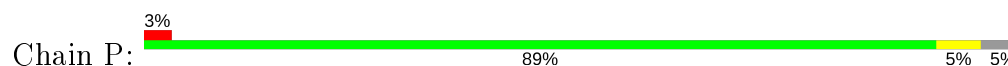
- Molecule 1: Proteasome subunit alpha type-2



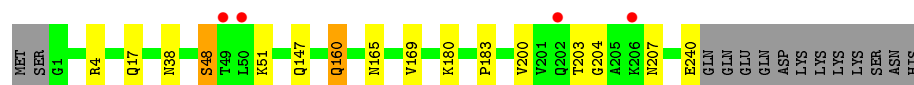
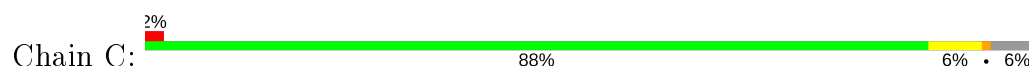
- Molecule 2: Proteasome subunit alpha type-3



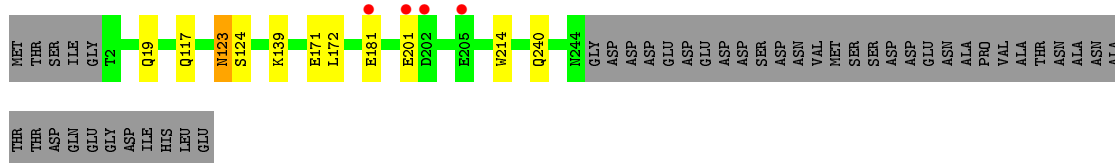
- Molecule 2: Proteasome subunit alpha type-3



- Molecule 3: Proteasome subunit alpha type-4



- Molecule 3: Proteasome subunit alpha type-4



• Molecule 7: Proteasome subunit alpha type-1

Chain G: 89% 6%



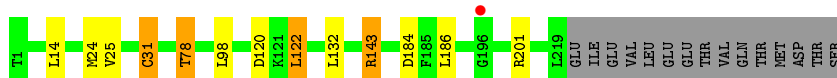
• Molecule 7: Proteasome subunit alpha type-1

Chain U: 88% 7%



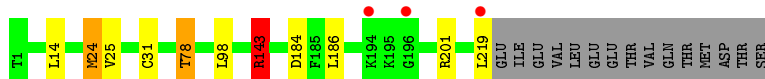
• Molecule 8: Proteasome subunit beta type-7

Chain H: 88% 6%



• Molecule 8: Proteasome subunit beta type-7

Chain V: 89% 6%



• Molecule 9: Proteasome subunit beta type-3

Chain I: 94% 5%

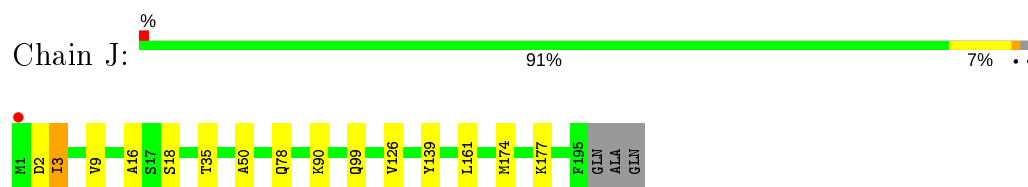


• Molecule 9: Proteasome subunit beta type-3

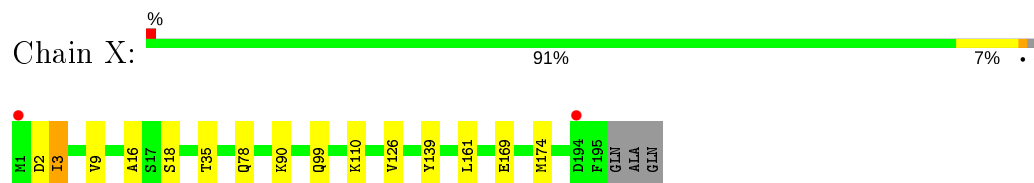
Chain W: 94% 5%



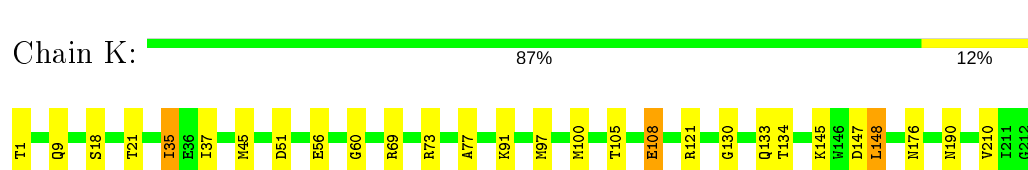
- Molecule 10: Proteasome subunit beta type-4



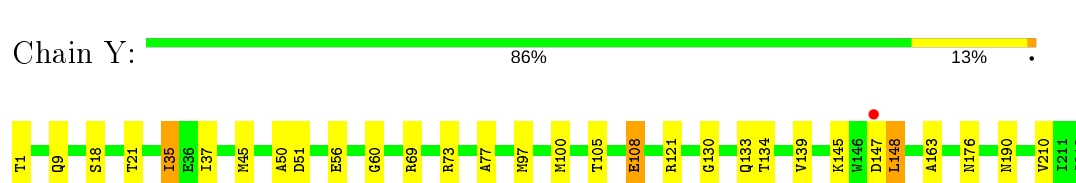
- Molecule 10: Proteasome subunit beta type-4



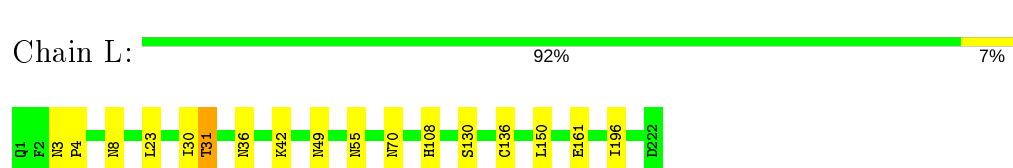
- Molecule 11: Proteasome subunit beta type-5



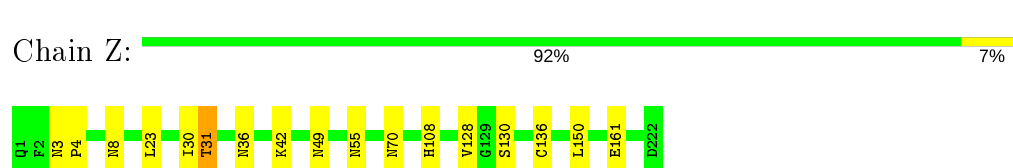
- Molecule 11: Proteasome subunit beta type-5



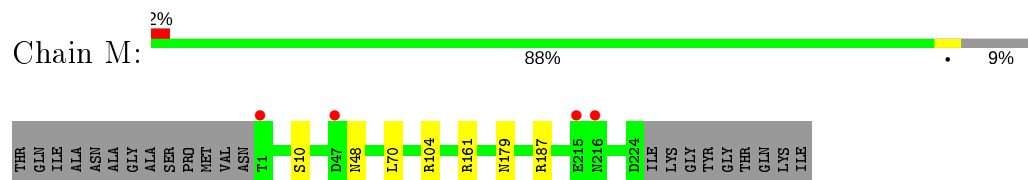
- Molecule 12: Proteasome subunit beta type-6



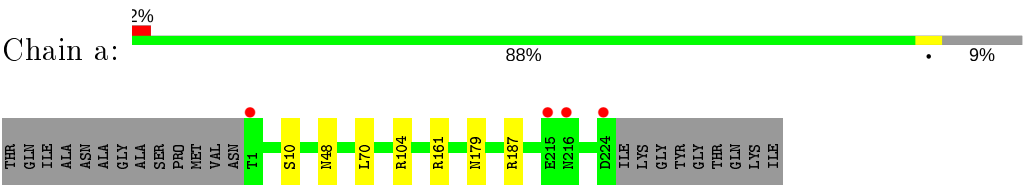
- Molecule 12: Proteasome subunit beta type-6



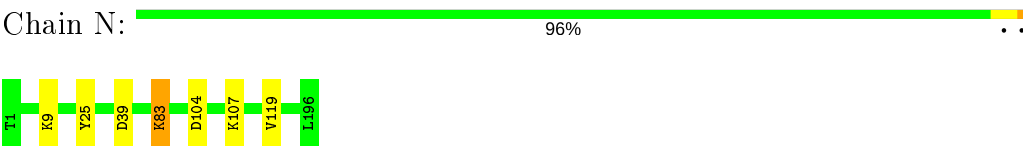
- Molecule 13: Proteasome subunit beta type-7



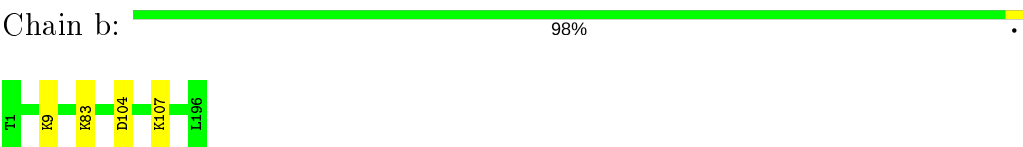
● Molecule 13: Proteasome subunit beta type-7



● Molecule 14: Proteasome subunit beta type-1



● Molecule 14: Proteasome subunit beta type-1



4 Data and refinement statistics

Property	Value	Source
Space group	P 1 21 1	Depositor
Cell constants a, b, c, α , β , γ	134.27Å 299.92Å 144.21Å 90.00° 112.68° 90.00°	Depositor
Resolution (Å)	15.00 – 3.00 15.00 – 3.00	Depositor EDS
% Data completeness (in resolution range)	97.8 (15.00-3.00) 98.7 (15.00-3.00)	Depositor EDS
R_{merge}	0.08	Depositor
R_{sym}	(Not available)	Depositor
$\langle I/\sigma(I) \rangle$ ¹	3.12 (at 3.01Å)	Xtriage
Refinement program	REFMAC 5.8.0158	Depositor
R, R_{free}	0.174 , 0.201 0.182 , 0.208	Depositor DCC
R_{free} test set	10245 reflections (5.00%)	wwPDB-VP
Wilson B-factor (Å ²)	62.7	Xtriage
Anisotropy	0.072	Xtriage
Bulk solvent k_{sol} (e/Å ³), B_{sol} (Å ²)	0.30 , 45.3	EDS
L-test for twinning ²	$\langle L \rangle = 0.49$, $\langle L^2 \rangle = 0.31$	Xtriage
Estimated twinning fraction	No twinning to report.	Xtriage
F_o, F_c correlation	0.94	EDS
Total number of atoms	49451	wwPDB-VP
Average B, all atoms (Å ²)	73.0	wwPDB-VP

Xtriage's analysis on translational NCS is as follows: *The largest off-origin peak in the Patterson function is 2.32% of the height of the origin peak. No significant pseudotranslation is detected.*

¹Intensities estimated from amplitudes.

²Theoretical values of $\langle |L| \rangle$, $\langle L^2 \rangle$ for acentric reflections are 0.5, 0.333 respectively for untwinned datasets, and 0.375, 0.2 for perfectly twinned datasets.

5 Model quality [i](#)

5.1 Standard geometry [i](#)

Bond lengths and bond angles in the following residue types are not validated in this section: MG, GQH, SO4, CL

The Z score for a bond length (or angle) is the number of standard deviations the observed value is removed from the expected value. A bond length (or angle) with $|Z| > 5$ is considered an outlier worth inspection. RMSZ is the root-mean-square of all Z scores of the bond lengths (or angles).

Mol	Chain	Bond lengths		Bond angles	
		RMSZ	$\# Z > 5$	RMSZ	$\# Z > 5$
1	A	0.37	0/1876	0.81	3/2535 (0.1%)
1	O	0.37	0/1876	0.81	4/2535 (0.2%)
2	B	0.38	0/1934	0.64	1/2618 (0.0%)
2	P	0.38	0/1934	0.63	0/2618
3	C	0.38	0/1910	0.64	0/2586
3	Q	0.37	0/1910	0.64	0/2586
4	D	0.36	0/1837	0.60	0/2475
4	R	0.36	0/1837	0.60	0/2475
5	E	0.37	0/1800	0.59	0/2433
5	S	0.36	0/1800	0.59	0/2433
6	F	0.37	0/1932	0.57	0/2609
6	T	0.36	0/1932	0.57	0/2609
7	G	0.37	0/1945	0.76	3/2634 (0.1%)
7	U	0.37	0/1945	0.81	3/2634 (0.1%)
8	H	0.35	0/1675	0.86	3/2267 (0.1%)
8	V	0.35	0/1675	0.86	3/2267 (0.1%)
9	I	0.37	0/1611	0.60	0/2174
9	W	0.36	0/1611	0.60	0/2174
10	J	0.36	0/1589	0.63	0/2142
10	X	0.37	0/1589	0.63	0/2142
11	K	0.36	0/1681	0.62	0/2274
11	Y	0.35	0/1681	0.62	0/2274
12	L	0.36	0/1795	0.60	0/2420
12	Z	0.36	0/1795	0.60	0/2420
13	M	0.38	0/1783	0.64	0/2420
13	a	0.38	0/1783	0.64	0/2420
14	N	0.35	0/1541	0.59	0/2087
14	b	0.34	0/1541	0.59	0/2087
All	All	0.37	0/49818	0.66	20/67348 (0.0%)

Chiral center outliers are detected by calculating the chiral volume of a chiral center and verifying if

the center is modelled as a planar moiety or with the opposite hand. A planarity outlier is detected by checking planarity of atoms in a peptide group, atoms in a mainchain group or atoms of a sidechain that are expected to be planar.

Mol	Chain	#Chirality outliers	#Planarity outliers
1	A	0	1
1	O	0	1
7	U	0	1
8	V	0	1
All	All	0	4

There are no bond length outliers.

The worst 5 of 20 bond angle outliers are listed below:

Mol	Chain	Res	Type	Atoms	Z	Observed(°)	Ideal(°)
7	U	68	ARG	NE-CZ-NH2	-22.42	109.09	120.30
1	A	4	ARG	NE-CZ-NH2	-20.75	109.92	120.30
8	V	143	ARG	NE-CZ-NH2	-20.19	110.21	120.30
1	O	4	ARG	NE-CZ-NH1	-20.14	110.23	120.30
8	H	143	ARG	NE-CZ-NH1	-18.80	110.90	120.30

There are no chirality outliers.

All (4) planarity outliers are listed below:

Mol	Chain	Res	Type	Group
1	A	4	ARG	Sidechain
1	O	4	ARG	Sidechain
7	U	68	ARG	Sidechain
8	V	143	ARG	Sidechain

5.2 Too-close contacts

In the following table, the Non-H and H(model) columns list the number of non-hydrogen atoms and hydrogen atoms in the chain respectively. The H(added) column lists the number of hydrogen atoms added and optimized by MolProbity. The Clashes column lists the number of clashes within the asymmetric unit, whereas Symm-Clashes lists symmetry related clashes.

Mol	Chain	Non-H	H(model)	H(added)	Clashes	Symm-Clashes
1	A	1842	0	1855	1	0
1	O	1842	0	1855	3	0
2	B	1904	0	1904	4	0
2	P	1904	0	1904	5	0
3	C	1881	0	1895	6	0

Continued on next page...

Continued from previous page...

Mol	Chain	Non-H	H(model)	H(added)	Clashes	Symm-Clashes
3	Q	1881	0	1895	6	0
4	D	1813	0	1797	4	0
4	R	1813	0	1797	5	0
5	E	1773	0	1775	8	0
5	S	1773	0	1775	7	0
6	F	1892	0	1883	5	0
6	T	1892	0	1883	3	0
7	G	1907	0	1901	5	0
7	U	1907	0	1901	6	0
8	H	1648	0	1672	7	0
8	V	1648	0	1672	5	0
9	I	1581	0	1574	6	0
9	W	1581	0	1574	6	0
10	J	1561	0	1569	7	0
10	X	1561	0	1569	7	0
11	K	1644	0	1594	15	0
11	Y	1644	0	1594	17	0
12	L	1757	0	1711	9	0
12	Z	1757	0	1711	9	0
13	M	1753	0	1754	0	0
13	a	1753	0	1754	0	0
14	N	1512	0	1481	3	0
14	b	1512	0	1481	0	0
15	G	1	0	0	0	0
15	I	1	0	0	0	0
15	K	1	0	0	0	0
15	N	1	0	0	0	0
15	V	1	0	0	0	0
15	W	1	0	0	0	0
15	Y	1	0	0	0	0
15	Z	1	0	0	0	0
16	G	1	0	0	0	0
16	U	1	0	0	0	0
17	H	43	0	0	0	0
17	K	43	0	0	1	0
17	V	43	0	0	0	0
17	Y	43	0	0	1	0
18	N	5	0	0	0	0
18	b	5	0	0	0	0
19	A	9	0	0	0	0
19	B	13	0	0	0	0
19	C	10	0	0	0	0

Continued on next page...

Continued from previous page...

Mol	Chain	Non-H	H(model)	H(added)	Clashes	Symm-Clashes
19	D	10	0	0	0	0
19	E	9	0	0	0	0
19	F	12	0	0	0	0
19	G	11	0	0	1	0
19	H	18	0	0	1	0
19	I	10	0	0	0	0
19	J	12	0	0	1	0
19	K	16	0	0	0	0
19	L	10	0	0	0	0
19	M	20	0	0	0	0
19	N	12	0	0	0	0
19	O	4	0	0	0	0
19	P	11	0	0	1	0
19	Q	9	0	0	0	0
19	R	3	0	0	0	0
19	S	8	0	0	0	0
19	T	8	0	0	0	0
19	U	9	0	0	1	0
19	V	11	0	0	0	0
19	W	9	0	0	0	0
19	X	19	0	0	1	0
19	Y	20	0	0	0	0
19	Z	10	0	0	0	0
19	a	15	0	0	0	0
19	b	15	0	0	0	0
All	All	49451	0	48730	123	0

The all-atom clashscore is defined as the number of clashes found per 1000 atoms (including hydrogen atoms). The all-atom clashscore for this structure is 1.

The worst 5 of 123 close contacts within the same asymmetric unit are listed below, sorted by their clash magnitude.

Atom-1	Atom-2	Interatomic distance (Å)	Clash overlap (Å)
5:E:92:ASN:HD21	12:L:70:ASN:HD21	1.09	0.95
5:S:92:ASN:HD21	12:Z:70:ASN:HD21	1.08	0.92
8:H:31:CYS:HB2	19:H:402:HOH:O	1.91	0.71
5:E:92:ASN:HD21	12:L:70:ASN:ND2	1.87	0.70
5:E:92:ASN:ND2	12:L:70:ASN:HD21	1.86	0.70

There are no symmetry-related clashes.

5.3 Torsion angles

5.3.1 Protein backbone

In the following table, the Percentiles column shows the percent Ramachandran outliers of the chain as a percentile score with respect to all X-ray entries followed by that with respect to entries of similar resolution.

The Analysed column shows the number of residues for which the backbone conformation was analysed, and the total number of residues.

Mol	Chain	Analysed	Favoured	Allowed	Outliers	Percentiles	
1	A	236/250 (94%)	227 (96%)	8 (3%)	1 (0%)	34	72
1	O	236/250 (94%)	226 (96%)	9 (4%)	1 (0%)	34	72
2	B	242/258 (94%)	236 (98%)	4 (2%)	2 (1%)	19	57
2	P	242/258 (94%)	236 (98%)	4 (2%)	2 (1%)	19	57
3	C	238/254 (94%)	236 (99%)	1 (0%)	1 (0%)	34	72
3	Q	238/254 (94%)	236 (99%)	1 (0%)	1 (0%)	34	72
4	D	231/260 (89%)	226 (98%)	5 (2%)	0	100	100
4	R	231/260 (89%)	226 (98%)	5 (2%)	0	100	100
5	E	229/234 (98%)	219 (96%)	10 (4%)	0	100	100
5	S	229/234 (98%)	220 (96%)	9 (4%)	0	100	100
6	F	241/288 (84%)	238 (99%)	3 (1%)	0	100	100
6	T	241/288 (84%)	239 (99%)	2 (1%)	0	100	100
7	G	239/252 (95%)	236 (99%)	3 (1%)	0	100	100
7	U	239/252 (95%)	236 (99%)	3 (1%)	0	100	100
8	H	217/234 (93%)	215 (99%)	2 (1%)	0	100	100
8	V	217/234 (93%)	215 (99%)	2 (1%)	0	100	100
9	I	202/205 (98%)	194 (96%)	8 (4%)	0	100	100
9	W	202/205 (98%)	194 (96%)	8 (4%)	0	100	100
10	J	193/198 (98%)	188 (97%)	4 (2%)	1 (0%)	29	68
10	X	193/198 (98%)	188 (97%)	4 (2%)	1 (0%)	29	68
11	K	210/212 (99%)	199 (95%)	9 (4%)	2 (1%)	15	53
11	Y	210/212 (99%)	198 (94%)	10 (5%)	2 (1%)	15	53
12	L	220/222 (99%)	215 (98%)	5 (2%)	0	100	100
12	Z	220/222 (99%)	214 (97%)	6 (3%)	0	100	100
13	M	222/246 (90%)	213 (96%)	9 (4%)	0	100	100

Continued on next page...

Continued from previous page...

Mol	Chain	Analysed	Favoured	Allowed	Outliers	Percentiles	
13	a	222/246 (90%)	212 (96%)	10 (4%)	0	100	100
14	N	194/196 (99%)	190 (98%)	4 (2%)	0	100	100
14	b	194/196 (99%)	190 (98%)	4 (2%)	0	100	100
All	All	6228/6618 (94%)	6062 (97%)	152 (2%)	14 (0%)	47	82

5 of 14 Ramachandran outliers are listed below:

Mol	Chain	Res	Type
1	A	231	LYS
2	B	52	THR
2	B	218	GLY
1	O	231	LYS
2	P	52	THR

5.3.2 Protein sidechains ⓘ

In the following table, the Percentiles column shows the percent sidechain outliers of the chain as a percentile score with respect to all X-ray entries followed by that with respect to entries of similar resolution.

The Analysed column shows the number of residues for which the sidechain conformation was analysed, and the total number of residues.

Mol	Chain	Analysed	Rotameric	Outliers	Percentiles	
1	A	201/209 (96%)	197 (98%)	4 (2%)	55	83
1	O	201/209 (96%)	197 (98%)	4 (2%)	55	83
2	B	203/216 (94%)	193 (95%)	10 (5%)	25	61
2	P	203/216 (94%)	194 (96%)	9 (4%)	28	65
3	C	212/226 (94%)	203 (96%)	9 (4%)	30	66
3	Q	212/226 (94%)	203 (96%)	9 (4%)	30	66
4	D	194/215 (90%)	186 (96%)	8 (4%)	30	67
4	R	194/215 (90%)	187 (96%)	7 (4%)	35	70
5	E	190/193 (98%)	181 (95%)	9 (5%)	26	63
5	S	190/193 (98%)	181 (95%)	9 (5%)	26	63
6	F	201/239 (84%)	192 (96%)	9 (4%)	27	64
6	T	201/239 (84%)	192 (96%)	9 (4%)	27	64
7	G	206/210 (98%)	197 (96%)	9 (4%)	28	65

Continued on next page...

Continued from previous page...

Mol	Chain	Analysed	Rotameric	Outliers	Percentiles	
7	U	206/210 (98%)	197 (96%)	9 (4%)	28	65
8	H	179/194 (92%)	171 (96%)	8 (4%)	27	64
8	V	179/194 (92%)	172 (96%)	7 (4%)	32	69
9	I	172/173 (99%)	166 (96%)	6 (4%)	36	71
9	W	172/173 (99%)	165 (96%)	7 (4%)	30	67
10	J	173/175 (99%)	167 (96%)	6 (4%)	36	71
10	X	173/175 (99%)	167 (96%)	6 (4%)	36	71
11	K	169/169 (100%)	162 (96%)	7 (4%)	30	67
11	Y	169/169 (100%)	162 (96%)	7 (4%)	30	67
12	L	185/185 (100%)	177 (96%)	8 (4%)	29	66
12	Z	185/185 (100%)	177 (96%)	8 (4%)	29	66
13	M	192/208 (92%)	185 (96%)	7 (4%)	35	70
13	a	192/208 (92%)	185 (96%)	7 (4%)	35	70
14	N	162/162 (100%)	158 (98%)	4 (2%)	47	79
14	b	162/162 (100%)	158 (98%)	4 (2%)	47	79
All	All	5278/5548 (95%)	5072 (96%)	206 (4%)	32	69

5 of 206 residues with a non-rotameric sidechain are listed below:

Mol	Chain	Res	Type
13	M	10	SER
2	P	191	LEU
12	Z	108	HIS
13	M	70	LEU
1	O	2	THR

Some sidechains can be flipped to improve hydrogen bonding and reduce clashes. 5 of 124 such sidechains are listed below:

Mol	Chain	Res	Type
13	M	102	GLN
3	Q	77	ASN
12	Z	152	ASN
13	M	179	ASN
2	P	58	GLN

5.3.3 RNA ⓘ

There are no RNA molecules in this entry.

5.4 Non-standard residues in protein, DNA, RNA chains ⓘ

There are no non-standard protein/DNA/RNA residues in this entry.

5.5 Carbohydrates ⓘ

There are no carbohydrates in this entry.

5.6 Ligand geometry ⓘ

Of 16 ligands modelled in this entry, 10 are monoatomic - leaving 6 for Mogul analysis.

In the following table, the Counts columns list the number of bonds (or angles) for which Mogul statistics could be retrieved, the number of bonds (or angles) that are observed in the model and the number of bonds (or angles) that are defined in the Chemical Component Dictionary. The Link column lists molecule types, if any, to which the group is linked. The Z score for a bond length (or angle) is the number of standard deviations the observed value is removed from the expected value. A bond length (or angle) with $|Z| > 2$ is considered an outlier worth inspection. RMSZ is the root-mean-square of all Z scores of the bond lengths (or angles).

Mol	Type	Chain	Res	Link	Bond lengths			Bond angles		
					Counts	RMSZ	# Z > 2	Counts	RMSZ	# Z > 2
17	GQH	K	301	11	43,44,44	1.67	7 (16%)	55,59,59	1.45	10 (18%)
18	SO4	b	201	-	4,4,4	0.28	0	6,6,6	0.13	0
17	GQH	V	301	8	43,44,44	2.24	8 (18%)	55,59,59	1.88	14 (25%)
17	GQH	H	301	8	43,44,44	2.38	8 (18%)	55,59,59	2.23	15 (27%)
17	GQH	Y	301	11	43,44,44	1.68	7 (16%)	55,59,59	1.42	10 (18%)
18	SO4	N	202	-	4,4,4	0.28	0	6,6,6	0.13	0

In the following table, the Chirals column lists the number of chiral outliers, the number of chiral centers analysed, the number of these observed in the model and the number defined in the Chemical Component Dictionary. Similar counts are reported in the Torsion and Rings columns. '-' means no outliers of that kind were identified.

Mol	Type	Chain	Res	Link	Chirals	Torsions	Rings
17	GQH	K	301	11	-	3/47/47/47	0/2/2/2
17	GQH	V	301	8	-	7/47/47/47	0/2/2/2
17	GQH	H	301	8	-	8/47/47/47	0/2/2/2

Continued on next page...

Continued from previous page...

Mol	Type	Chain	Res	Link	Chirals	Torsions	Rings
17	GQH	Y	301	11	-	3/47/47/47	0/2/2/2

The worst 5 of 30 bond length outliers are listed below:

Mol	Chain	Res	Type	Atoms	Z	Observed(Å)	Ideal(Å)
17	H	301	GQH	N52-N51	-11.09	0.94	1.23
17	V	301	GQH	N52-N51	-9.61	0.98	1.23
17	K	301	GQH	C16-C17	-5.31	1.38	1.51
17	Y	301	GQH	C16-C17	-5.24	1.38	1.51
17	V	301	GQH	C16-C17	-4.70	1.40	1.51

The worst 5 of 49 bond angle outliers are listed below:

Mol	Chain	Res	Type	Atoms	Z	Observed(°)	Ideal(°)
17	H	301	GQH	C6-N51-N52	9.40	125.12	115.24
17	V	301	GQH	C6-N51-N52	8.67	124.36	115.24
17	H	301	GQH	C54-C6-N51	5.67	118.66	109.30
17	H	301	GQH	C7-C6-N51	-5.55	95.68	108.85
17	K	301	GQH	O30-S27-C26	4.05	111.18	108.34

There are no chirality outliers.

5 of 21 torsion outliers are listed below:

Mol	Chain	Res	Type	Atoms
17	H	301	GQH	C25-C26-S27-O30
17	H	301	GQH	C15-C16-C17-C24
17	V	301	GQH	C15-C16-C17-C24
17	K	301	GQH	C15-C16-C17-C24
17	Y	301	GQH	C15-C16-C17-C24

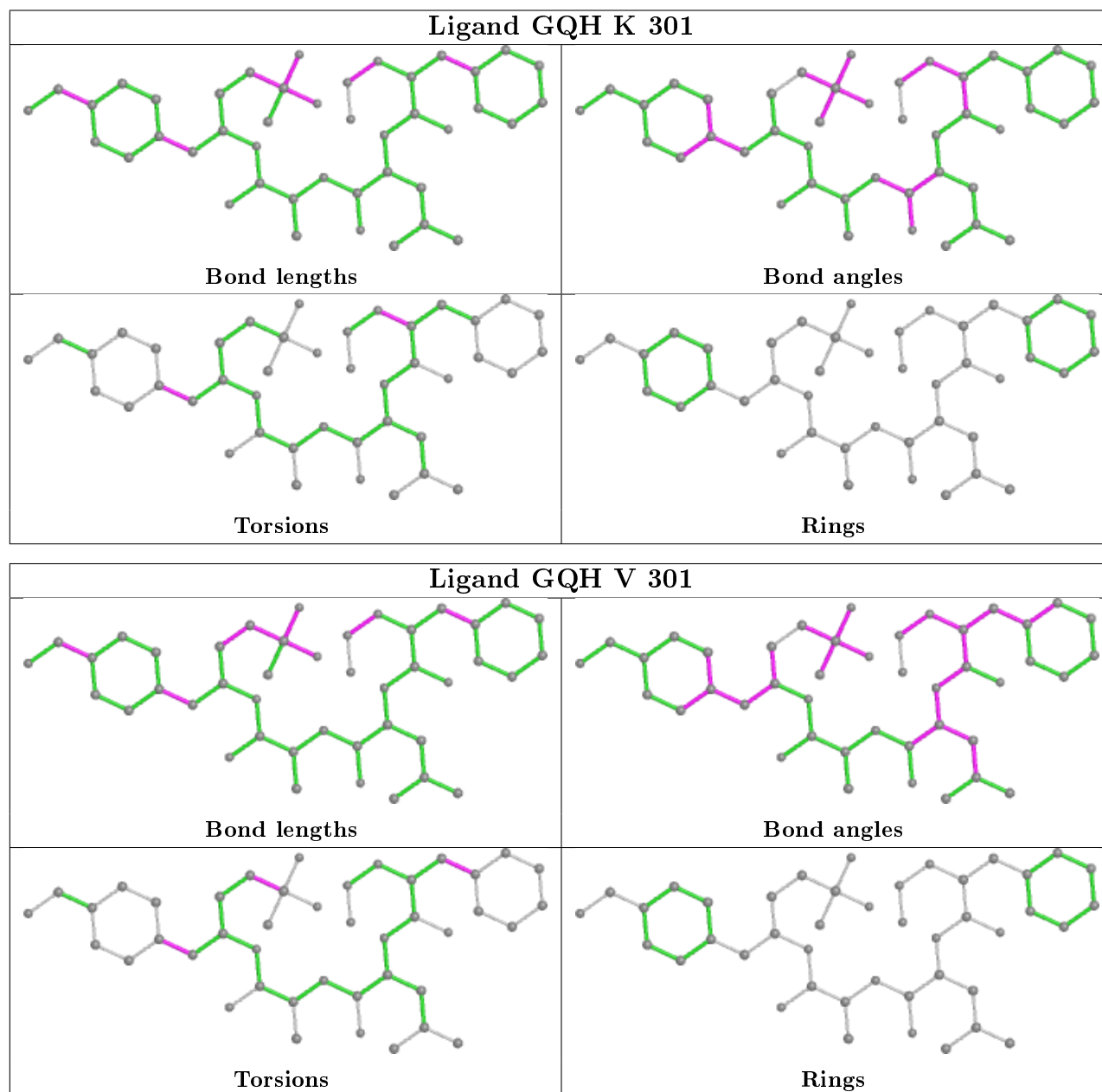
There are no ring outliers.

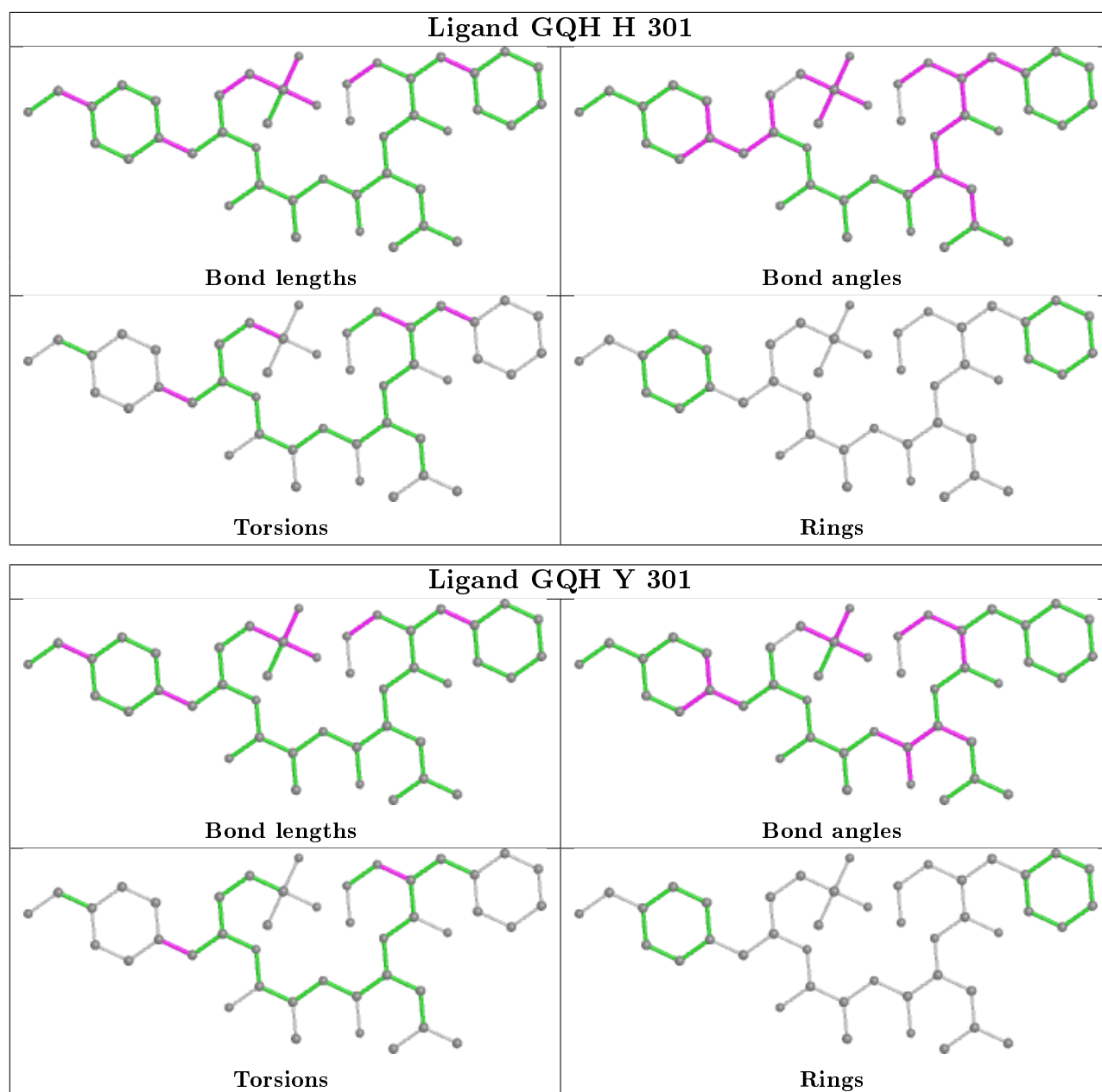
2 monomers are involved in 2 short contacts:

Mol	Chain	Res	Type	Clashes	Symm-Clashes
17	K	301	GQH	1	0
17	Y	301	GQH	1	0

The following is a two-dimensional graphical depiction of Mogul quality analysis of bond lengths, bond angles, torsion angles, and ring geometry for all instances of the Ligand of Interest. In addition, ligands with molecular weight > 250 and outliers as shown on the validation Tables will also be included. For torsion angles, if less than 5% of the Mogul distribution of torsion angles is

within 10 degrees of the torsion angle in question, then that torsion angle is considered an outlier. Any bond that is central to one or more torsion angles identified as an outlier by Mogul will be highlighted in the graph. For rings, the root-mean-square deviation (RMSD) between the ring in question and similar rings identified by Mogul is calculated over all ring torsion angles. If the average RMSD is greater than 60 degrees and the minimal RMSD between the ring in question and any Mogul-identified rings is also greater than 60 degrees, then that ring is considered an outlier. The outliers are highlighted in purple. The color gray indicates Mogul did not find sufficient equivalents in the CSD to analyse the geometry.





5.7 Other polymers [i](#)

There are no such residues in this entry.

5.8 Polymer linkage issues [i](#)

There are no chain breaks in this entry.

6 Fit of model and data [i](#)

6.1 Protein, DNA and RNA chains [i](#)

In the following table, the column labelled ‘#RSRZ> 2’ contains the number (and percentage) of RSRZ outliers, followed by percent RSRZ outliers for the chain as percentile scores relative to all X-ray entries and entries of similar resolution. The OWAB column contains the minimum, median, 95th percentile and maximum values of the occupancy-weighted average B-factor per residue. The column labelled ‘Q< 0.9’ lists the number of (and percentage) of residues with an average occupancy less than 0.9.

Mol	Chain	Analysed	<RSRZ>	#RSRZ>2	OWAB(Å ²)	Q<0.9
1	A	240/250 (96%)	-0.53	3 (1%) 77 51	49, 68, 109, 144	0
1	O	240/250 (96%)	-0.44	5 (2%) 63 34	52, 75, 122, 155	0
2	B	244/258 (94%)	-0.44	6 (2%) 57 29	47, 70, 126, 177	0
2	P	244/258 (94%)	-0.46	7 (2%) 51 23	51, 71, 122, 173	0
3	C	240/254 (94%)	-0.48	4 (1%) 70 41	47, 73, 135, 165	0
3	Q	240/254 (94%)	-0.25	12 (5%) 28 10	62, 90, 166, 191	0
4	D	235/260 (90%)	-0.60	2 (0%) 84 63	51, 74, 106, 149	0
4	R	235/260 (90%)	-0.45	2 (0%) 84 63	61, 85, 127, 160	0
5	E	231/234 (98%)	-0.53	1 (0%) 92 79	54, 77, 114, 161	0
5	S	231/234 (98%)	-0.47	3 (1%) 77 51	52, 83, 130, 166	0
6	F	243/288 (84%)	-0.56	6 (2%) 57 29	45, 69, 124, 157	0
6	T	243/288 (84%)	-0.51	4 (1%) 72 44	47, 77, 137, 167	0
7	G	241/252 (95%)	-0.64	1 (0%) 92 79	46, 65, 104, 157	0
7	U	241/252 (95%)	-0.60	2 (0%) 86 65	50, 67, 105, 148	0
8	H	219/234 (93%)	-0.62	1 (0%) 91 75	42, 62, 119, 136	0
8	V	219/234 (93%)	-0.58	3 (1%) 75 49	46, 65, 122, 153	0
9	I	204/205 (99%)	-0.85	0 100 100	40, 58, 86, 115	0
9	W	204/205 (99%)	-0.83	1 (0%) 91 75	41, 57, 87, 107	0
10	J	195/198 (98%)	-0.72	1 (0%) 91 75	41, 60, 88, 131	0
10	X	195/198 (98%)	-0.70	2 (1%) 82 59	42, 62, 89, 150	0
11	K	212/212 (100%)	-0.77	0 100 100	43, 59, 91, 114	0
11	Y	212/212 (100%)	-0.71	1 (0%) 91 75	42, 63, 96, 123	0
12	L	222/222 (100%)	-0.71	0 100 100	38, 60, 104, 133	0
12	Z	222/222 (100%)	-0.73	0 100 100	41, 61, 105, 141	0

Continued on next page...

Continued from previous page...

Mol	Chain	Analysed	<RSRZ>	#RSRZ>2	OWAB(Å ²)	Q<0.9
13	M	224/246 (91%)	-0.63	4 (1%) 68 40	41, 63, 92, 137	0
13	a	224/246 (91%)	-0.65	4 (1%) 68 40	39, 61, 90, 136	0
14	N	196/196 (100%)	-0.74	0 100 100	39, 55, 89, 114	0
14	b	196/196 (100%)	-0.76	0 100 100	40, 57, 89, 118	0
All	All	6292/6618 (95%)	-0.60	75 (1%) 79 54	38, 67, 119, 191	0

The worst 5 of 75 RSRZ outliers are listed below:

Mol	Chain	Res	Type	RSRZ
2	B	220	ASN	6.5
2	B	221	ASP	6.2
2	P	219	ALA	5.7
3	Q	50	LEU	4.8
13	M	216	ASN	4.6

6.2 Non-standard residues in protein, DNA, RNA chains [i](#)

There are no non-standard protein/DNA/RNA residues in this entry.

6.3 Carbohydrates [i](#)

There are no carbohydrates in this entry.

6.4 Ligands [i](#)

In the following table, the Atoms column lists the number of modelled atoms in the group and the number defined in the chemical component dictionary. The B-factors column lists the minimum, median, 95th percentile and maximum values of B factors of atoms in the group. The column labelled 'Q< 0.9' lists the number of atoms with occupancy less than 0.9.

Mol	Type	Chain	Res	Atoms	RSCC	RSR	B-factors(Å ²)	Q<0.9
17	GQH	V	301	43/43	0.92	0.26	39,55,74,96	0
17	GQH	H	301	43/43	0.92	0.25	33,49,73,74	0
15	MG	N	201	1/1	0.93	0.21	53,53,53,53	0
16	CL	U	301	1/1	0.93	0.45	78,78,78,78	0
18	SO4	N	202	5/5	0.93	0.18	45,50,58,63	5
15	MG	I	301	1/1	0.94	0.48	73,73,73,73	0
17	GQH	K	301	43/43	0.94	0.20	35,46,66,88	0

Continued on next page...

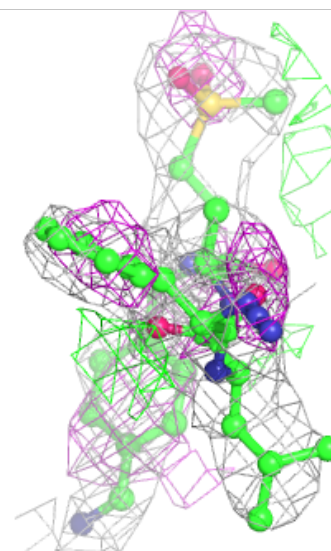
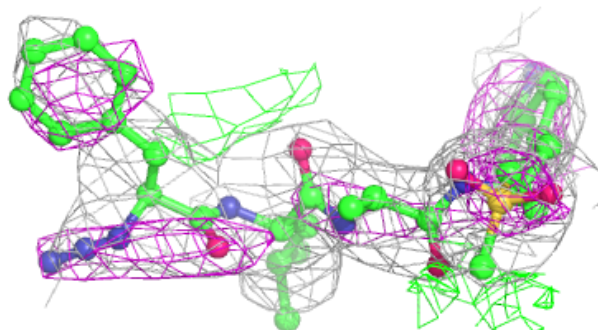
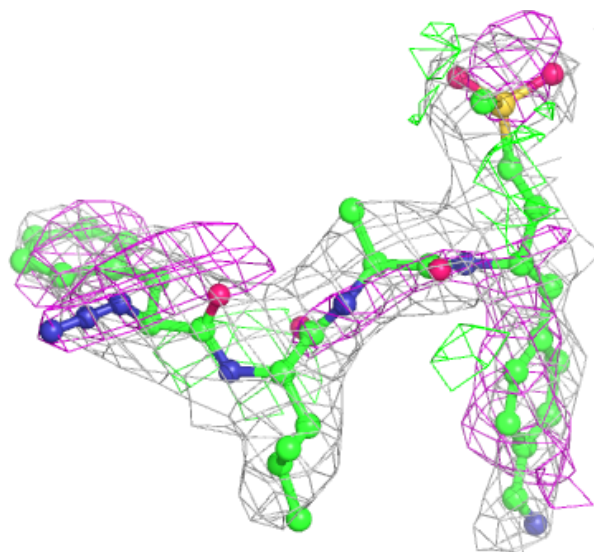
Continued from previous page...

Mol	Type	Chain	Res	Atoms	RSCC	RSR	B-factors(\AA^2)	Q<0.9
17	GQH	Y	301	43/43	0.94	0.21	34,48,64,84	0
15	MG	Y	302	1/1	0.94	0.17	83,83,83,83	0
15	MG	V	302	1/1	0.94	0.14	71,71,71,71	0
16	CL	G	302	1/1	0.95	0.36	71,71,71,71	0
15	MG	Z	301	1/1	0.95	0.42	65,65,65,65	0
15	MG	G	301	1/1	0.95	0.11	51,51,51,51	0
18	SO4	b	201	5/5	0.96	0.16	50,53,59,63	5
15	MG	W	301	1/1	0.97	0.42	80,80,80,80	0
15	MG	K	302	1/1	0.98	0.08	71,71,71,71	0

The following is a graphical depiction of the model fit to experimental electron density of all instances of the Ligand of Interest. In addition, ligands with molecular weight > 250 and outliers as shown on the geometry validation Tables will also be included. Each fit is shown from different orientation to approximate a three-dimensional view.

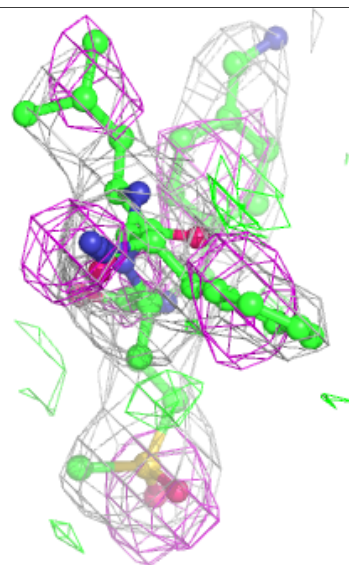
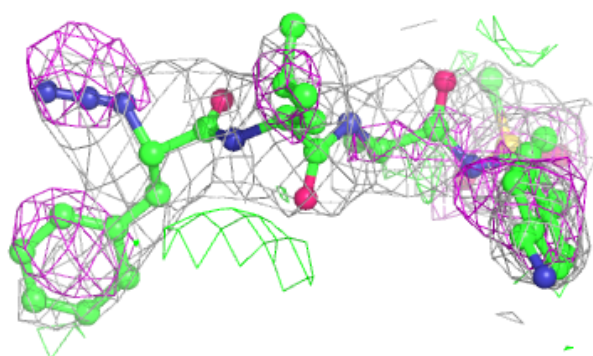
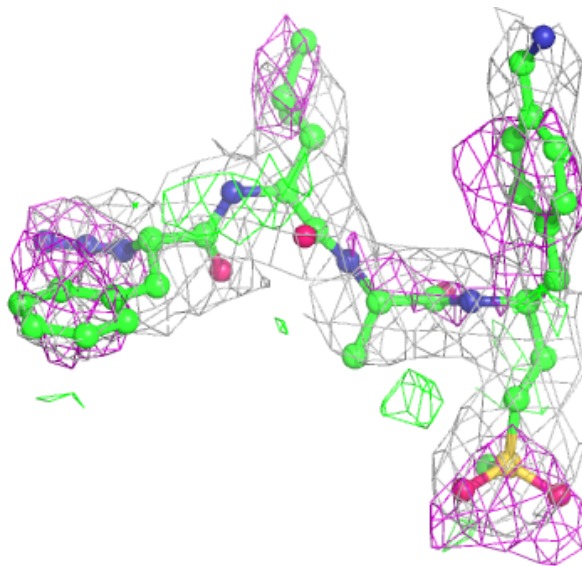
Electron density around GQH V 301:

2mF_o-DF_c (at 0.7 rmsd) in gray
 mF_o-DF_c (at 3 rmsd) in purple (negative)
 and green (positive)



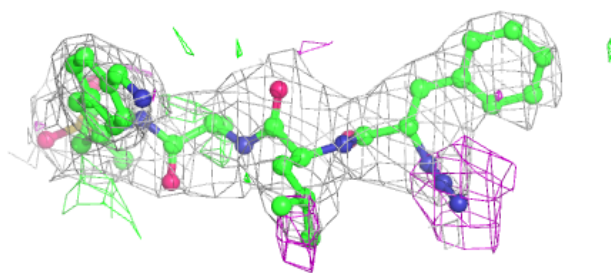
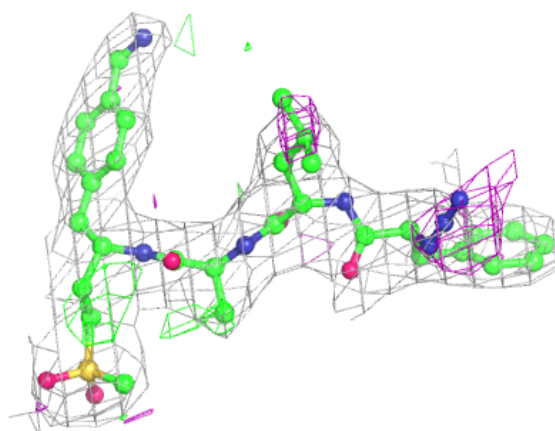
Electron density around GQH H 301:

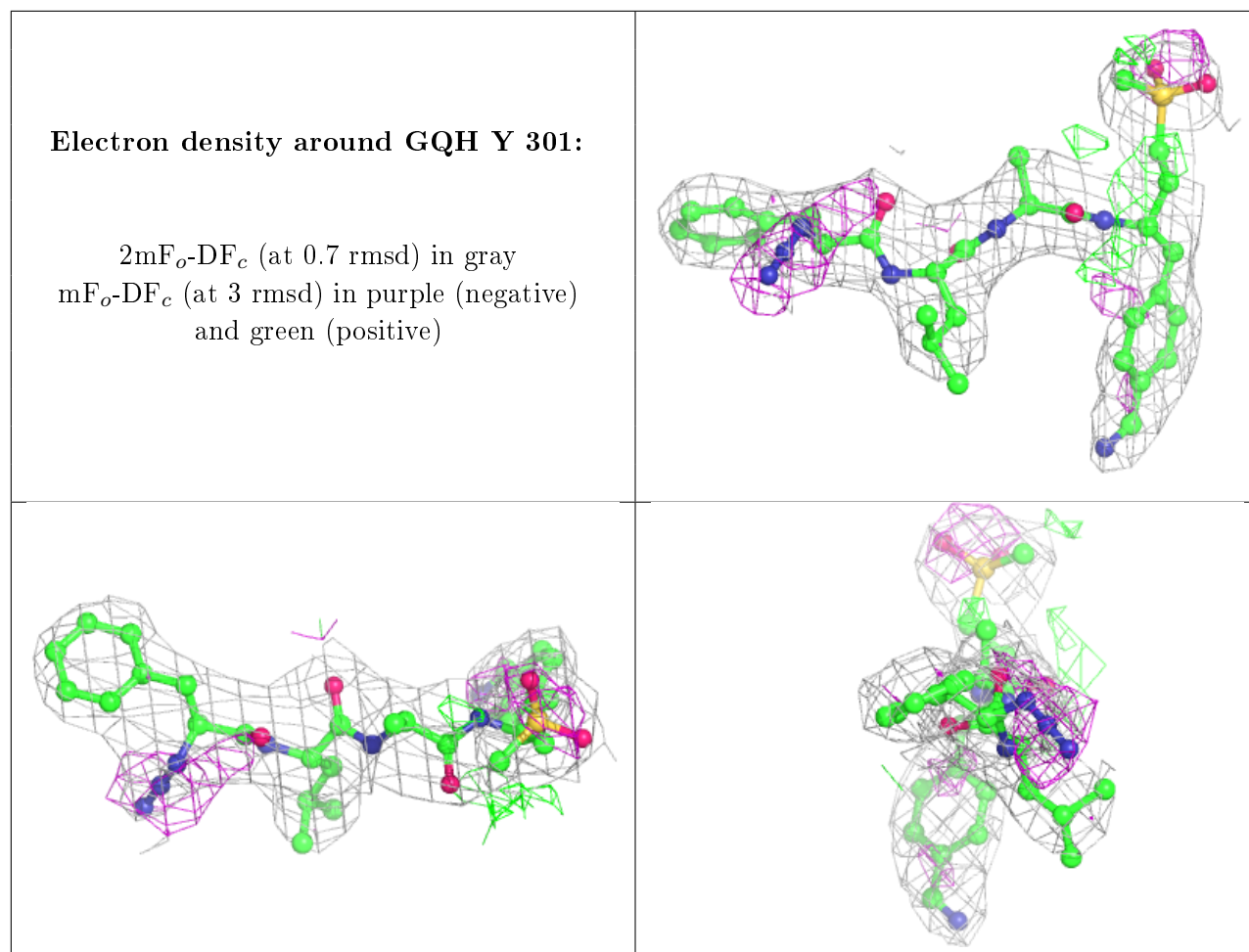
$2mF_o-DF_c$ (at 0.7 rmsd) in gray
 mF_o-DF_c (at 3 rmsd) in purple (negative)
and green (positive)



Electron density around GQH K 301:

$2mF_o-DF_c$ (at 0.7 rmsd) in gray
 mF_o-DF_c (at 3 rmsd) in purple (negative)
and green (positive)





6.5 Other polymers ⓘ

There are no such residues in this entry.