



# Full wwPDB X-ray Structure Validation Report ⓘ

Jun 16, 2020 – 12:26 am BST

PDB ID : 6HTK  
Title : X-ray structure of the tryptophan lyase NosL in complex with (R)-(+)-indoline-2-carboxylate  
Authors : Amara, P.; Mouesca, J.M.; Bella, M.; Martin, L.; Saragaglia, C.; Gambarelli, S.; Nicolet, Y.  
Deposited on : 2018-10-04  
Resolution : 2.00 Å(reported)

This is a Full wwPDB X-ray Structure Validation Report for a publicly released PDB entry.

We welcome your comments at [validation@mail.wwpdb.org](mailto:validation@mail.wwpdb.org)

A user guide is available at

<https://www.wwpdb.org/validation/2017/XrayValidationReportHelp>

with specific help available everywhere you see the ⓘ symbol.

---

The following versions of software and data (see [references ⓘ](#)) were used in the production of this report:

MolProbity : 4.02b-467  
Mogul : 1.8.5 (274361), CSD as541be (2020)  
Xtriage (Phenix) : 1.13  
EDS : 2.11  
buster-report : 1.1.7 (2018)  
Percentile statistics : 20191225.v01 (using entries in the PDB archive December 25th 2019)  
Refmac : 5.8.0158  
CCP4 : 7.0.044 (Gargrove)  
Ideal geometry (proteins) : Engh & Huber (2001)  
Ideal geometry (DNA, RNA) : Parkinson et al. (1996)  
Validation Pipeline (wwPDB-VP) : 2.11

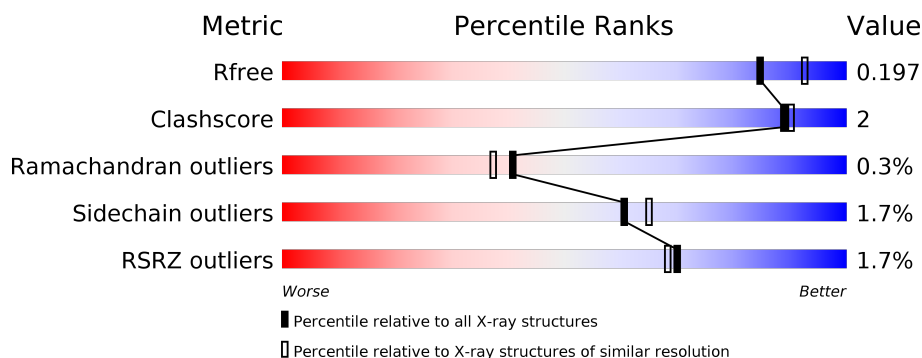
# 1 Overall quality at a glance

The following experimental techniques were used to determine the structure:

## *X-RAY DIFFRACTION*

The reported resolution of this entry is 2.00 Å.

Percentile scores (ranging between 0-100) for global validation metrics of the entry are shown in the following graphic. The table shows the number of entries on which the scores are based.



Metric	Whole archive (#Entries)	Similar resolution (#Entries, resolution range(Å))
$R_{free}$	130704	8085 (2.00-2.00)
Clashscore	141614	9178 (2.00-2.00)
Ramachandran outliers	138981	9054 (2.00-2.00)
Sidechain outliers	138945	9053 (2.00-2.00)
RSRZ outliers	127900	7900 (2.00-2.00)

The table below summarises the geometric issues observed across the polymeric chains and their fit to the electron density. The red, orange, yellow and green segments on the lower bar indicate the fraction of residues that contain outliers for  $\geq 3$ , 2, 1 and 0 types of geometric quality criteria respectively. A grey segment represents the fraction of residues that are not modelled. The numeric value for each fraction is indicated below the corresponding segment, with a dot representing fractions  $\leq 5\%$ . The upper red bar (where present) indicates the fraction of residues that have poor fit to the electron density. The numeric value is given above the bar.

Mol	Chain	Length	Quality of chain
1	A	400	<div> <div>3%</div> <div> <div></div> <div>92%</div> <div></div> <div></div> <div></div> </div> <div>• •</div> </div>
1	B	400	<div> <div>%</div> <div> <div></div> <div>89%</div> <div></div> <div></div> <div></div> </div> <div>6% • 5%</div> </div>

## 2 Entry composition [i](#)

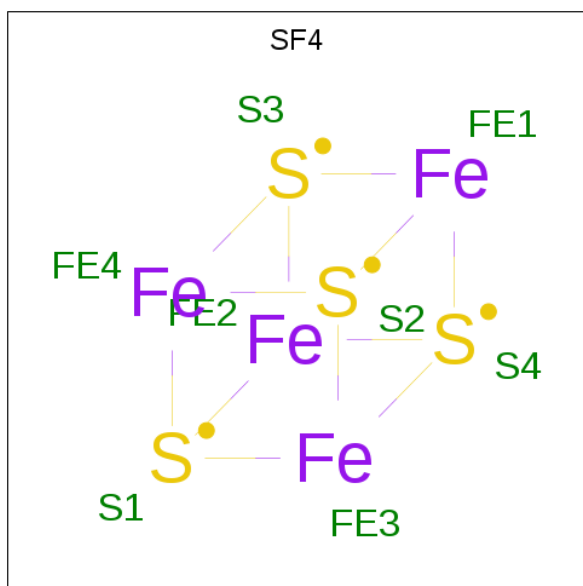
There are 11 unique types of molecules in this entry. The entry contains 7039 atoms, of which 0 are hydrogens and 0 are deuteriums.

In the tables below, the ZeroOcc column contains the number of atoms modelled with zero occupancy, the AltConf column contains the number of residues with at least one atom in alternate conformation and the Trace column contains the number of residues modelled with at most 2 atoms.

- Molecule 1 is a protein called 3-methyl-2-indolic acid synthase.

Mol	Chain	Residues	Atoms					ZeroOcc	AltConf	Trace
1	A	384	Total	C	N	O	S	0	7	1
			2988	1866	534	573	15			
1	B	381	Total	C	N	O	S	0	13	0
			3037	1897	550	572	18			

- Molecule 2 is IRON/SULFUR CLUSTER (three-letter code: SF4) (formula: Fe<sub>4</sub>S<sub>4</sub>).



Mol	Chain	Residues	Atoms			ZeroOcc	AltConf
2	A	1	Total	Fe	S	0	0
			8	4	4		
2	B	1	Total	Fe	S	0	0
			8	4	4		

- Molecule 3 is GLYCEROL (three-letter code: GOL) (formula: C<sub>3</sub>H<sub>8</sub>O<sub>3</sub>).



Mol	Chain	Residues	Atoms			ZeroOcc	AltConf
3	A	1	Total	C	O	0	0
			6	3	3		
3	A	1	Total	C	O	0	0
			6	3	3		
3	B	1	Total	C	O	0	0
			6	3	3		
3	B	1	Total	C	O	0	0
			6	3	3		
3	B	1	Total	C	O	0	1
			12	6	6		

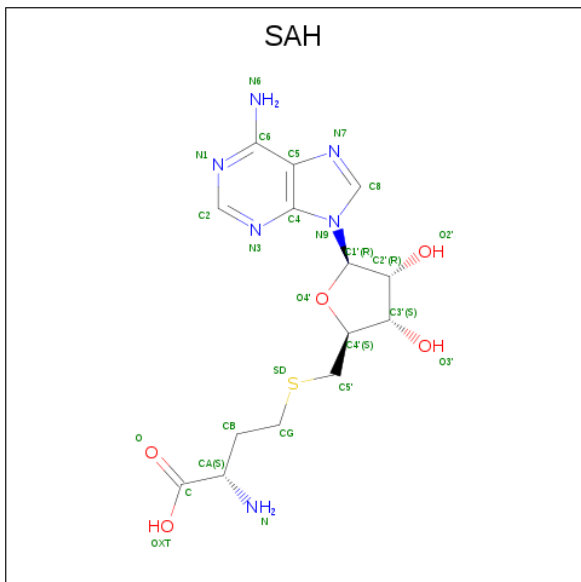
- Molecule 4 is BROMIDE ION (three-letter code: BR) (formula: Br).

Mol	Chain	Residues	Atoms		ZeroOcc	AltConf
4	B	3	Total	Br	0	0
			3	3		
4	A	3	Total	Br	0	1
			3	3		

- Molecule 5 is SODIUM ION (three-letter code: NA) (formula: Na).

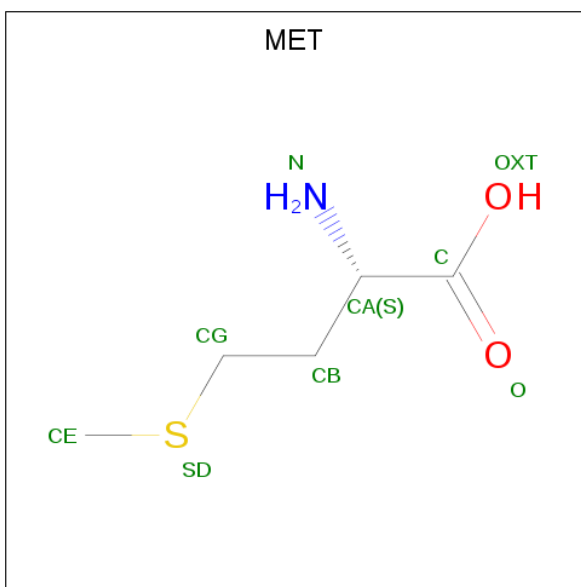
Mol	Chain	Residues	Atoms		ZeroOcc	AltConf
5	B	1	Total	Na	0	0
			1	1		
5	A	1	Total	Na	0	0
			1	1		

- Molecule 6 is S-ADENOSYL-L-HOMOCYSTEINE (three-letter code: SAH) (formula:  $C_{14}H_{20}N_6O_5S$ ).



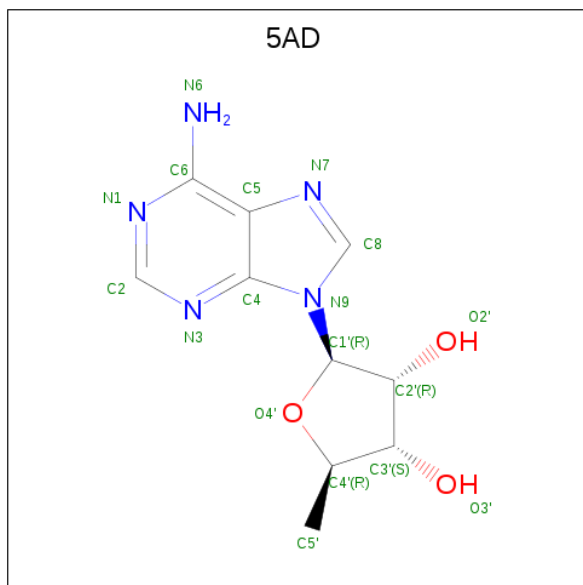
Mol	Chain	Residues	Atoms					ZeroOcc	AltConf
6	A	1	Total	C	N	O	S	0	1
			26	14	6	5	1		
6	B	1	Total	C	N	O	S	0	1
			26	14	6	5	1		

- Molecule 7 is METHIONINE (three-letter code: MET) (formula:  $C_5H_{11}NO_2S$ ).



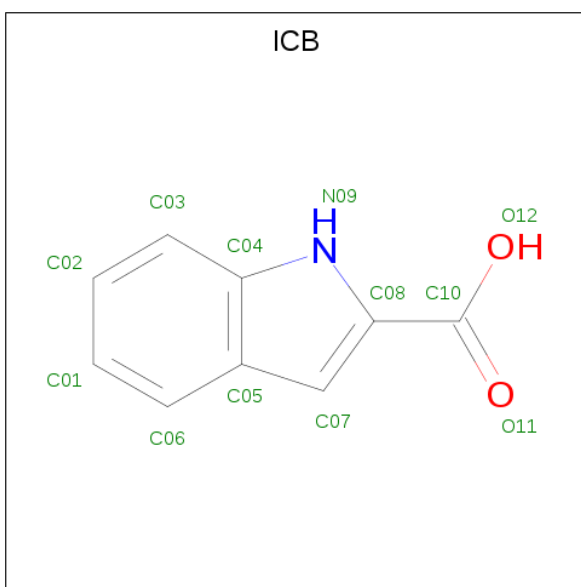
Mol	Chain	Residues	Atoms					ZeroOcc	AltConf
7	A	1	Total	C	N	O	S	0	1
			9	5	1	2	1		
7	B	1	Total	C	N	O	S	0	1
			9	5	1	2	1		

- Molecule 8 is 5'-DEOXYADENOSINE (three-letter code: 5AD) (formula:  $C_{10}H_{13}N_5O_3$ ).



Mol	Chain	Residues	Atoms					ZeroOcc	AltConf
8	A	1	Total	C	N	O		0	1
			18	10	5	3			
8	B	1	Total	C	N	O		0	1
			18	10	5	3			

- Molecule 9 is 1H-indole-2-carboxylic acid (three-letter code: ICB) (formula:  $C_9H_7NO_2$ ).



Mol	Chain	Residues	Atoms				ZeroOcc	AltConf
9	A	1	Total	C	N	O	0	0
			12	9	1	2		
9	B	1	Total	C	N	O	0	0
			12	9	1	2		

- Molecule 10 is POTASSIUM ION (three-letter code: K) (formula: K).

Mol	Chain	Residues	Atoms		ZeroOcc	AltConf
10	B	1	Total	K	0	0
			1	1		

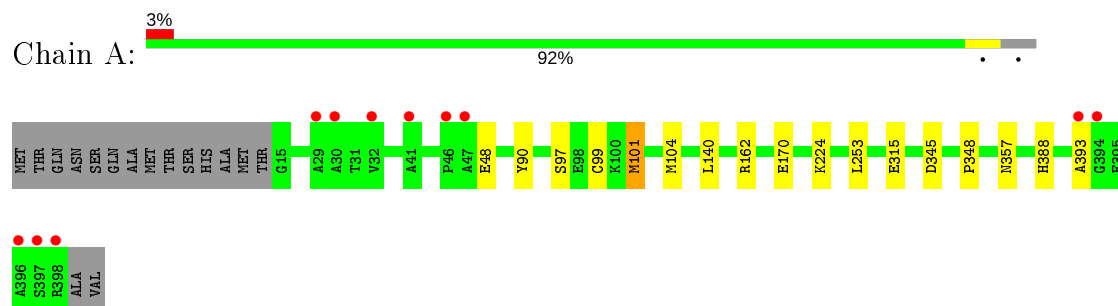
- Molecule 11 is water.

Mol	Chain	Residues	Atoms		ZeroOcc	AltConf
11	A	350	Total	O	0	1
			350	350		
11	B	473	Total	O	0	4
			473	473		

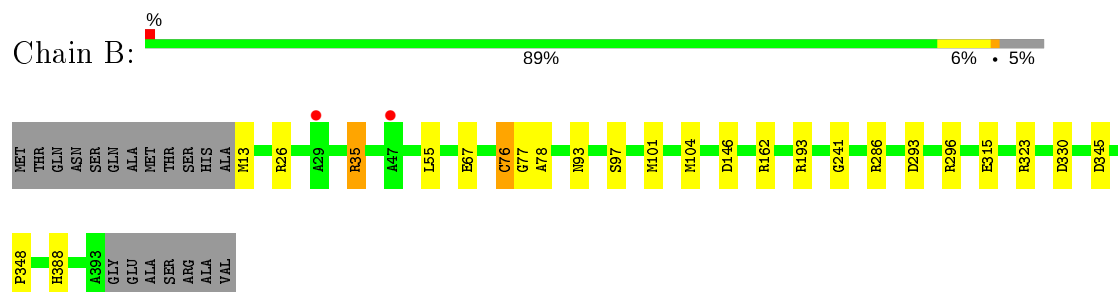
### 3 Residue-property plots [i](#)

These plots are drawn for all protein, RNA and DNA chains in the entry. The first graphic for a chain summarises the proportions of the various outlier classes displayed in the second graphic. The second graphic shows the sequence view annotated by issues in geometry and electron density. Residues are color-coded according to the number of geometric quality criteria for which they contain at least one outlier: green = 0, yellow = 1, orange = 2 and red = 3 or more. A red dot above a residue indicates a poor fit to the electron density ( $RSRZ > 2$ ). Stretches of 2 or more consecutive residues without any outlier are shown as a green connector. Residues present in the sample, but not in the model, are shown in grey.

- Molecule 1: 3-methyl-2-indolic acid synthase



- Molecule 1: 3-methyl-2-indolic acid synthase





## 4 Data and refinement statistics

Property	Value	Source
Space group	P 1 2 1	Depositor
Cell constants a, b, c, $\alpha$ , $\beta$ , $\gamma$	94.65Å 47.01Å 114.08Å 90.00° 108.91° 90.00°	Depositor
Resolution (Å)	47.11 – 2.00 47.11 – 2.00	Depositor EDS
% Data completeness (in resolution range)	99.1 (47.11-2.00) 99.7 (47.11-2.00)	Depositor EDS
$R_{merge}$	(Not available)	Depositor
$R_{sym}$	0.10	Depositor
$\langle I/\sigma(I) \rangle$ <sup>1</sup>	2.06 (at 2.00Å)	Xtriage
Refinement program	PHENIX (1.13_2998: ???)	Depositor
R, $R_{free}$	0.169 , 0.197 0.169 , 0.197	Depositor DCC
$R_{free}$ test set	3236 reflections (5.00%)	wwPDB-VP
Wilson B-factor (Å <sup>2</sup> )	25.1	Xtriage
Anisotropy	0.207	Xtriage
Bulk solvent $k_{sol}$ (e/Å <sup>3</sup> ), $B_{sol}$ (Å <sup>2</sup> )	0.35 , 62.5	EDS
L-test for twinning <sup>2</sup>	$\langle  L  \rangle = 0.50$ , $\langle L^2 \rangle = 0.34$	Xtriage
Estimated twinning fraction	No twinning to report.	Xtriage
$F_o, F_c$ correlation	0.96	EDS
Total number of atoms	7039	wwPDB-VP
Average B, all atoms (Å <sup>2</sup> )	33.0	wwPDB-VP

Xtriage's analysis on translational NCS is as follows: *The largest off-origin peak in the Patterson function is 4.29% of the height of the origin peak. No significant pseudotranslation is detected.*

<sup>1</sup>Intensities estimated from amplitudes.

<sup>2</sup>Theoretical values of  $\langle |L| \rangle$ ,  $\langle L^2 \rangle$  for acentric reflections are 0.5, 0.333 respectively for untwinned datasets, and 0.375, 0.2 for perfectly twinned datasets.

## 5 Model quality

### 5.1 Standard geometry

Bond lengths and bond angles in the following residue types are not validated in this section: GOL, SAH, NA, SF4, 5AD, BR, ICB, K

The Z score for a bond length (or angle) is the number of standard deviations the observed value is removed from the expected value. A bond length (or angle) with  $|Z| > 5$  is considered an outlier worth inspection. RMSZ is the root-mean-square of all Z scores of the bond lengths (or angles).

Mol	Chain	Bond lengths		Bond angles	
		RMSZ	# Z  >5	RMSZ	# Z  >5
1	A	0.25	0/3064	0.44	0/4150
1	B	0.26	0/3122	0.46	0/4226
All	All	0.26	0/6186	0.45	0/8376

There are no bond length outliers.

There are no bond angle outliers.

There are no chirality outliers.

There are no planarity outliers.

### 5.2 Too-close contacts

In the following table, the Non-H and H(model) columns list the number of non-hydrogen atoms and hydrogen atoms in the chain respectively. The H(added) column lists the number of hydrogen atoms added and optimized by MolProbity. The Clashes column lists the number of clashes within the asymmetric unit, whereas Symm-Clashes lists symmetry related clashes.

Mol	Chain	Non-H	H(model)	H(added)	Clashes	Symm-Clashes
1	A	2988	0	2841	9	0
1	B	3037	0	2957	14	0
2	A	8	0	0	1	0
2	B	8	0	0	1	0
3	A	12	0	16	0	0
3	B	24	0	32	0	0
4	A	3	0	0	1	0
4	B	3	0	0	1	0
5	A	1	0	0	0	0
5	B	1	0	0	0	0
6	A	26	0	19	1	0

*Continued on next page...*

*Continued from previous page...*

Mol	Chain	Non-H	H(model)	H(added)	Clashes	Symm-Clashes
6	B	26	0	19	0	0
7	A	9	0	8	0	0
7	B	9	0	8	0	0
8	A	18	0	13	0	0
8	B	18	0	13	0	0
9	A	12	0	0	0	0
9	B	12	0	0	0	0
10	B	1	0	0	0	0
11	A	350	0	0	1	0
11	B	473	0	0	4	1
All	All	7039	0	5926	23	1

The all-atom clashscore is defined as the number of clashes found per 1000 atoms (including hydrogen atoms). The all-atom clashscore for this structure is 2.

All (23) close contacts within the same asymmetric unit are listed below, sorted by their clash magnitude.

Atom-1	Atom-2	Interatomic distance (Å)	Clash overlap (Å)
1:A:170[B]:GLU:OE1	11:A:601:HOH:O	2.15	0.63
1:B:76[B]:CYS:O	1:B:78:ALA:N	2.32	0.62
1:B:35[B]:ARG:NH2	1:B:67:GLU:OE2	2.34	0.61
1:B:293:ASP:OD1	11:B:601:HOH:O	2.17	0.60
1:B:388:HIS:HA	4:B:510:BR:BR	2.56	0.60
1:A:388:HIS:HA	4:A:505[A]:BR:BR	2.56	0.60
1:B:193:ARG:HD2	1:B:241:GLY:HA3	1.91	0.52
1:B:146:ASP:OD1	11:B:602:HOH:O	2.19	0.49
1:B:345:ASP:HB3	1:B:348:PRO:HB3	1.94	0.49
1:B:330:ASP:OD1	11:B:603:HOH:O	2.20	0.49
1:A:345:ASP:HB3	1:A:348:PRO:HB3	1.95	0.48
1:B:296:ARG:NH1	11:B:615:HOH:O	2.46	0.47
1:A:99:CYS:SG	1:A:224:LYS:HD3	2.56	0.45
1:B:26:ARG:HG2	1:B:55:LEU:HD21	1.99	0.45
1:B:104:MET:HE2	2:B:501:SF4:S3	2.56	0.45
1:A:90:TYR:CZ	1:A:140:LEU:HD22	2.53	0.44
1:A:104:MET:HE2	2:A:501:SF4:S2	2.58	0.44
1:B:93:ASN:HB2	1:B:104:MET:HG2	2.00	0.43
1:A:393:ALA:HA	1:B:13:MET:HG2	1.99	0.43
1:B:286:ARG:HD3	1:B:323:ARG:O	2.19	0.42
1:A:48:GLU:OE1	1:A:48:GLU:N	2.50	0.42
1:A:101:MET:HE2	1:A:253:LEU:HD11	2.03	0.41
6:A:508[A]:SAH:HG1	6:A:508[A]:SAH:H3'	2.03	0.40

All (1) symmetry-related close contacts are listed below. The label for Atom-2 includes the symmetry operator and encoded unit-cell translations to be applied.

Atom-1	Atom-2	Interatomic distance (Å)	Clash overlap (Å)
11:B:628:HOH:O	11:B:761:HOH:O[1_545]	2.17	0.03

## 5.3 Torsion angles [i](#)

### 5.3.1 Protein backbone [i](#)

In the following table, the Percentiles column shows the percent Ramachandran outliers of the chain as a percentile score with respect to all X-ray entries followed by that with respect to entries of similar resolution.

The Analysed column shows the number of residues for which the backbone conformation was analysed, and the total number of residues.

Mol	Chain	Analysed	Favoured	Allowed	Outliers	Percentiles	
1	A	389/400 (97%)	377 (97%)	12 (3%)	0	100	100
1	B	392/400 (98%)	377 (96%)	11 (3%)	4 (1%)	15	9
All	All	781/800 (98%)	754 (96%)	23 (3%)	4 (0%)	41	23

All (4) Ramachandran outliers are listed below:

Mol	Chain	Res	Type
1	B	76[A]	CYS
1	B	76[B]	CYS
1	B	77[A]	GLY
1	B	77[B]	GLY

### 5.3.2 Protein sidechains [i](#)

In the following table, the Percentiles column shows the percent sidechain outliers of the chain as a percentile score with respect to all X-ray entries followed by that with respect to entries of similar resolution.

The Analysed column shows the number of residues for which the sidechain conformation was analysed, and the total number of residues.

Mol	Chain	Analysed	Rotameric	Outliers	Percentiles	
1	A	304/329 (92%)	299 (98%)	5 (2%)	62	67
1	B	316/329 (96%)	310 (98%)	6 (2%)	57	61

*Continued on next page...*

*Continued from previous page...*

Mol	Chain	Analysed	Rotameric	Outliers	Percentiles	
All	All	620/658 (94%)	609 (98%)	11 (2%)	60	63

All (11) residues with a non-rotameric sidechain are listed below:

Mol	Chain	Res	Type
1	A	97	SER
1	A	101	MET
1	A	162	ARG
1	A	315	GLU
1	A	357	ASN
1	B	35[A]	ARG
1	B	35[B]	ARG
1	B	97	SER
1	B	101	MET
1	B	162	ARG
1	B	315	GLU

Some sidechains can be flipped to improve hydrogen bonding and reduce clashes. There are no such sidechains identified.

### 5.3.3 RNA ⓘ

There are no RNA molecules in this entry.

## 5.4 Non-standard residues in protein, DNA, RNA chains ⓘ

There are no non-standard protein/DNA/RNA residues in this entry.

## 5.5 Carbohydrates ⓘ

There are no carbohydrates in this entry.

## 5.6 Ligand geometry ⓘ

Of 25 ligands modelled in this entry, 9 are monoatomic - leaving 16 for Mogul analysis.

In the following table, the Counts columns list the number of bonds (or angles) for which Mogul statistics could be retrieved, the number of bonds (or angles) that are observed in the model and the number of bonds (or angles) that are defined in the Chemical Component Dictionary. The Link column lists molecule types, if any, to which the group is linked. The Z score for a bond

length (or angle) is the number of standard deviations the observed value is removed from the expected value. A bond length (or angle) with  $|Z| > 2$  is considered an outlier worth inspection. RMSZ is the root-mean-square of all Z scores of the bond lengths (or angles).

Mol	Type	Chain	Res	Link	Bond lengths			Bond angles		
					Counts	RMSZ	$\# Z  > 2$	Counts	RMSZ	$\# Z  > 2$
3	GOL	A	503	-	5,5,5	0.92	0	5,5,5	0.93	0
3	GOL	B	507	-	5,5,5	0.89	0	5,5,5	0.94	0
3	GOL	B	508[B]	-	5,5,5	0.87	0	5,5,5	1.00	0
3	GOL	B	508[A]	-	5,5,5	0.90	0	5,5,5	0.99	0
6	SAH	B	502[A]	2	21,28,28	1.19	2 (9%)	20,40,40	1.66	4 (20%)
3	GOL	B	506	-	5,5,5	0.82	0	5,5,5	1.06	0
2	SF4	B	501	1,7,6	0,12,12	0.00	-	-	-	-
9	ICB	A	511	-	9,13,13	3.40	4 (44%)	10,18,18	1.78	2 (20%)
2	SF4	A	501	1,7,6	0,12,12	0.00	-	-	-	-
8	5AD	B	504[B]	-	17,20,20	4.24	8 (47%)	15,30,30	1.84	4 (26%)
3	GOL	A	502	-	5,5,5	0.91	0	5,5,5	1.02	0
9	ICB	B	505	-	9,13,13	3.44	4 (44%)	10,18,18	1.73	2 (20%)
6	SAH	A	508[A]	2	21,28,28	1.19	2 (9%)	20,40,40	1.66	4 (20%)
8	5AD	A	510[B]	-	17,20,20	4.24	8 (47%)	15,30,30	1.79	4 (26%)

In the following table, the Chirals column lists the number of chiral outliers, the number of chiral centers analysed, the number of these observed in the model and the number defined in the Chemical Component Dictionary. Similar counts are reported in the Torsion and Rings columns. '-' means no outliers of that kind were identified.

Mol	Type	Chain	Res	Link	Chirals	Torsions	Rings
3	GOL	A	503	-	-	4/4/4/4	-
3	GOL	B	507	-	-	2/4/4/4	-
3	GOL	B	508[B]	-	-	0/4/4/4	-
3	GOL	B	508[A]	-	-	0/4/4/4	-
6	SAH	B	502[A]	2	-	0/7/31/31	0/3/3/3
3	GOL	B	506	-	-	0/4/4/4	-
2	SF4	B	501	1,7,6	-	-	0/6/5/5
9	ICB	A	511	-	-	0/0/4/4	0/2/2/2
2	SF4	A	501	1,7,6	-	-	0/6/5/5
8	5AD	B	504[B]	-	-	0/0/20/20	0/3/3/3
3	GOL	A	502	-	-	0/4/4/4	-
9	ICB	B	505	-	-	0/0/4/4	0/2/2/2
6	SAH	A	508[A]	2	-	0/7/31/31	0/3/3/3
8	5AD	A	510[B]	-	-	0/0/20/20	0/3/3/3

All (28) bond length outliers are listed below:

Mol	Chain	Res	Type	Atoms	Z	Observed(Å)	Ideal(Å)
8	A	510[B]	5AD	C3'-C2'	-10.40	1.24	1.53
8	B	504[B]	5AD	C3'-C2'	-10.37	1.25	1.53
8	B	504[B]	5AD	C3'-C4'	8.42	1.64	1.52
8	A	510[B]	5AD	C3'-C4'	8.41	1.64	1.52
9	B	505	ICB	C07-C08	7.78	1.53	1.39
9	A	511	ICB	C07-C08	7.45	1.53	1.39
8	A	510[B]	5AD	O4'-C1'	7.32	1.51	1.41
8	B	504[B]	5AD	O4'-C1'	7.25	1.51	1.41
8	B	504[B]	5AD	O4'-C4'	-5.29	1.28	1.44
8	A	510[B]	5AD	O4'-C4'	-5.26	1.28	1.44
9	A	511	ICB	C03-C04	-4.62	1.33	1.41
9	B	505	ICB	C03-C04	-4.45	1.34	1.41
8	B	504[B]	5AD	O2'-C2'	4.07	1.52	1.43
8	A	510[B]	5AD	O2'-C2'	4.05	1.52	1.43
6	B	502[A]	SAH	C2-N3	4.00	1.38	1.32
6	A	508[A]	SAH	C2-N3	3.97	1.38	1.32
9	A	511	ICB	C08-N09	3.32	1.47	1.37
9	B	505	ICB	C08-N09	3.30	1.47	1.37
9	A	511	ICB	C06-C05	-3.29	1.34	1.41
8	B	504[B]	5AD	C6-N6	3.27	1.46	1.34
8	A	510[B]	5AD	C6-N6	3.23	1.45	1.34
9	B	505	ICB	C06-C05	-3.14	1.34	1.41
8	B	504[B]	5AD	C2'-C1'	2.86	1.58	1.53
8	A	510[B]	5AD	C2'-C1'	2.72	1.57	1.53
8	B	504[B]	5AD	O3'-C3'	2.68	1.49	1.43
8	A	510[B]	5AD	O3'-C3'	2.64	1.49	1.43
6	B	502[A]	SAH	C2-N1	2.50	1.38	1.33
6	A	508[A]	SAH	C2-N1	2.44	1.38	1.33

All (20) bond angle outliers are listed below:

Mol	Chain	Res	Type	Atoms	Z	Observed(°)	Ideal(°)
6	B	502[A]	SAH	N3-C2-N1	-5.37	120.29	128.68
6	A	508[A]	SAH	N3-C2-N1	-5.35	120.32	128.68
8	B	504[B]	5AD	N3-C2-N1	-4.28	121.98	128.68
8	A	510[B]	5AD	N3-C2-N1	-4.26	122.02	128.68
8	B	504[B]	5AD	C5'-C4'-C3'	-3.99	111.51	115.70
9	A	511	ICB	C07-C05-C04	3.95	109.72	106.27
9	B	505	ICB	C07-C05-C04	3.74	109.54	106.27
8	A	510[B]	5AD	C5'-C4'-C3'	-3.68	111.84	115.70
9	B	505	ICB	C08-N09-C04	3.22	111.17	104.45
6	A	508[A]	SAH	C5'-SD-CG	-3.18	92.72	102.27
9	A	511	ICB	C08-N09-C04	3.04	110.79	104.45

*Continued on next page...*

*Continued from previous page...*

Mol	Chain	Res	Type	Atoms	Z	Observed(°)	Ideal(°)
6	B	502[A]	SAH	C5'-SD-CG	-2.95	93.41	102.27
8	B	504[B]	5AD	C3'-C2'-C1'	2.67	104.99	100.98
6	A	508[A]	SAH	C3'-C2'-C1'	2.54	104.80	100.98
8	A	510[B]	5AD	C3'-C2'-C1'	2.51	104.75	100.98
6	B	502[A]	SAH	O4'-C4'-C5'	2.35	114.89	108.83
6	A	508[A]	SAH	O4'-C4'-C5'	2.16	114.39	108.83
8	B	504[B]	5AD	C4-C5-N7	-2.15	107.16	109.40
8	A	510[B]	5AD	C4-C5-N7	-2.10	107.21	109.40
6	B	502[A]	SAH	C3'-C2'-C1'	2.09	104.12	100.98

There are no chirality outliers.

All (6) torsion outliers are listed below:

Mol	Chain	Res	Type	Atoms
3	A	503	GOL	O1-C1-C2-C3
3	A	503	GOL	C1-C2-C3-O3
3	A	503	GOL	O1-C1-C2-O2
3	A	503	GOL	O2-C2-C3-O3
3	B	507	GOL	O2-C2-C3-O3
3	B	507	GOL	C1-C2-C3-O3

There are no ring outliers.

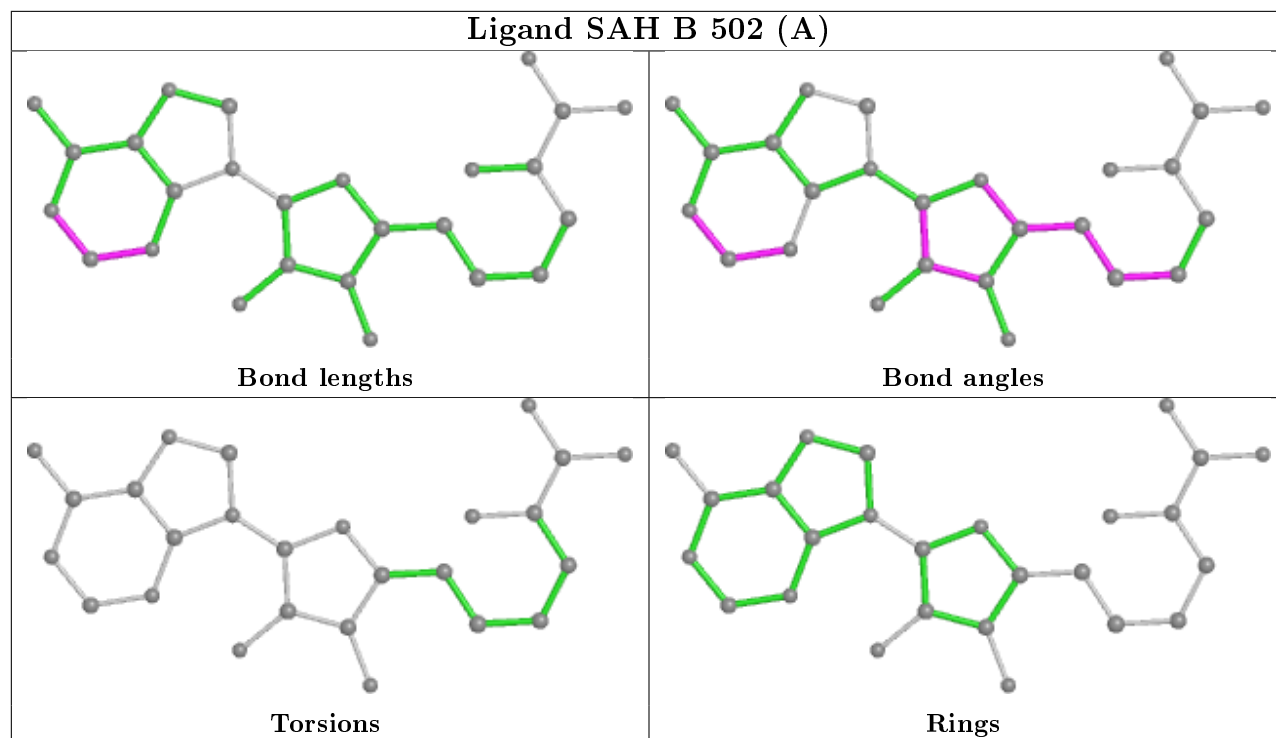
3 monomers are involved in 3 short contacts:

Mol	Chain	Res	Type	Clashes	Symm-Clashes
2	B	501	SF4	1	0
2	A	501	SF4	1	0
6	A	508[A]	SAH	1	0

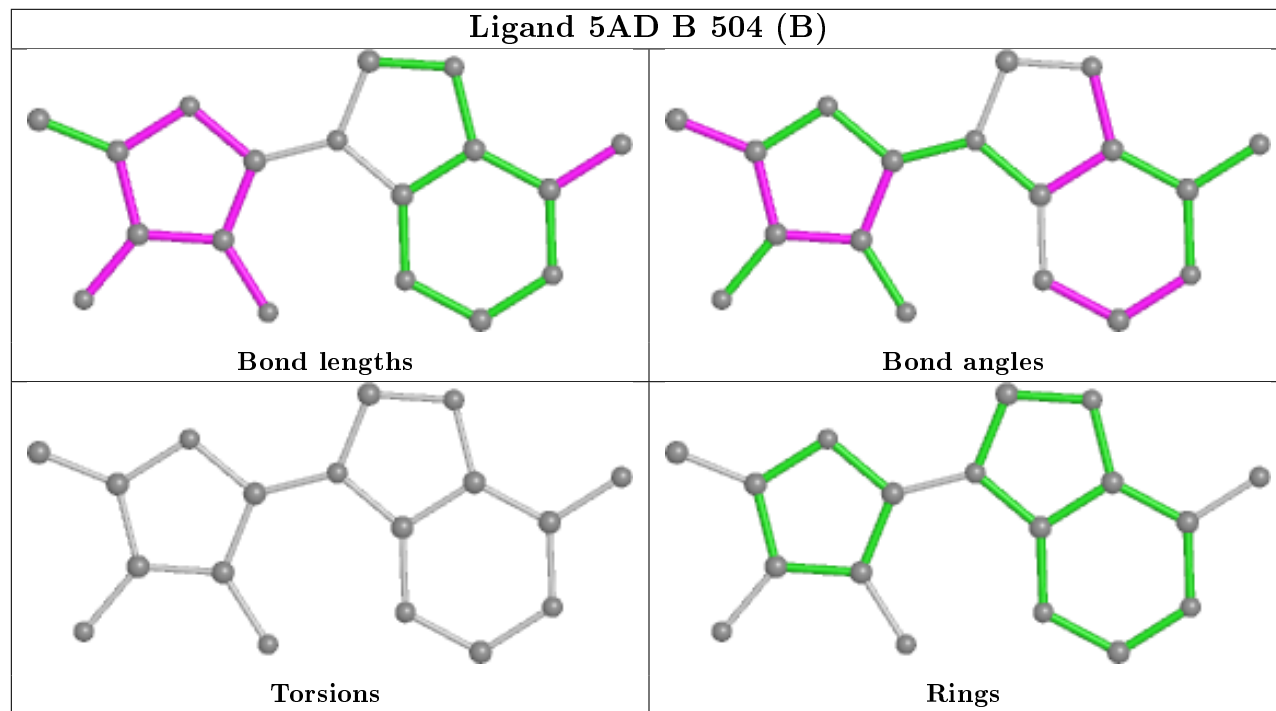
The following is a two-dimensional graphical depiction of Mogul quality analysis of bond lengths, bond angles, torsion angles, and ring geometry for all instances of the Ligand of Interest. In addition, ligands with molecular weight > 250 and outliers as shown on the validation Tables will also be included. For torsion angles, if less than 5% of the Mogul distribution of torsion angles is within 10 degrees of the torsion angle in question, then that torsion angle is considered an outlier. Any bond that is central to one or more torsion angles identified as an outlier by Mogul will be highlighted in the graph. For rings, the root-mean-square deviation (RMSD) between the ring in question and similar rings identified by Mogul is calculated over all ring torsion angles. If the average RMSD is greater than 60 degrees and the minimal RMSD between the ring in question and any Mogul-identified rings is also greater than 60 degrees, then that ring is considered an outlier. The outliers are highlighted in purple. The color gray indicates Mogul did not find sufficient equivalents in the CSD to analyse the geometry.

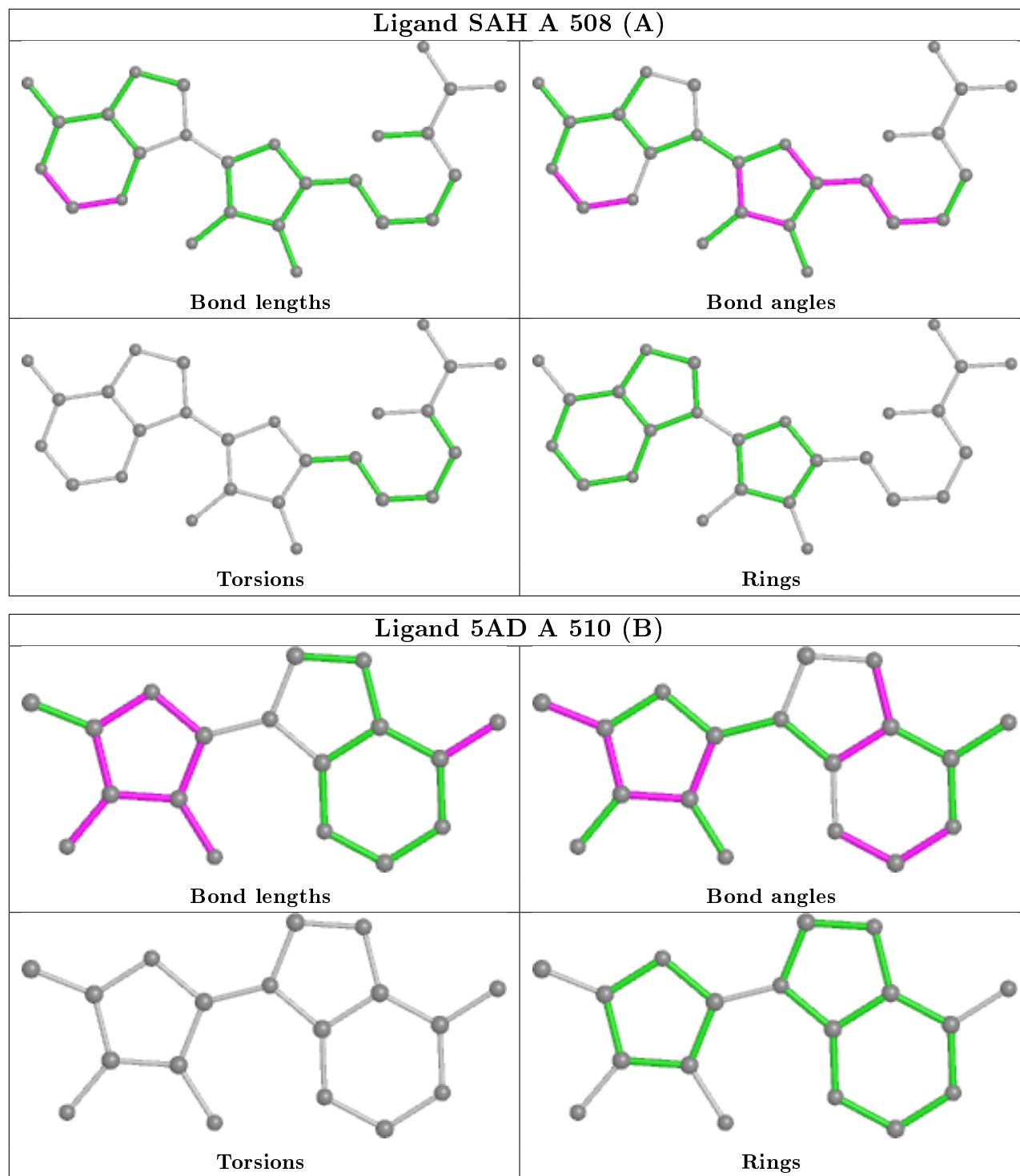


## Ligand SAH B 502 (A)



## Ligand 5AD B 504 (B)





## 5.7 Other polymers ⓘ

There are no such residues in this entry.

## 5.8 Polymer linkage issues

There are no chain breaks in this entry.

## 6 Fit of model and data [i](#)

### 6.1 Protein, DNA and RNA chains [i](#)

In the following table, the column labelled ‘#RSRZ> 2’ contains the number (and percentage) of RSRZ outliers, followed by percent RSRZ outliers for the chain as percentile scores relative to all X-ray entries and entries of similar resolution. The OWAB column contains the minimum, median, 95<sup>th</sup> percentile and maximum values of the occupancy-weighted average B-factor per residue. The column labelled ‘Q< 0.9’ lists the number of (and percentage) of residues with an average occupancy less than 0.9.

Mol	Chain	Analysed	<RSRZ>	#RSRZ>2	OWAB(Å <sup>2</sup> )	Q<0.9
1	A	384/400 (96%)	-0.33	11 (2%) 51 50	21, 36, 63, 101	0
1	B	381/400 (95%)	-0.55	2 (0%) 91 90	13, 24, 47, 76	0
All	All	765/800 (95%)	-0.44	13 (1%) 70 68	13, 30, 57, 101	0

All (13) RSRZ outliers are listed below:

Mol	Chain	Res	Type	RSRZ
1	A	396	ALA	3.6
1	B	47	ALA	3.5
1	A	47	ALA	3.2
1	A	394	GLY	2.7
1	B	29	ALA	2.6
1	A	46	PRO	2.5
1	A	41	ALA	2.5
1	A	393	ALA	2.4
1	A	32	VAL	2.3
1	A	397	SER	2.2
1	A	398	ARG	2.2
1	A	29	ALA	2.0
1	A	30	ALA	2.0

### 6.2 Non-standard residues in protein, DNA, RNA chains [i](#)

There are no non-standard protein/DNA/RNA residues in this entry.

### 6.3 Carbohydrates [i](#)

There are no carbohydrates in this entry.

## 6.4 Ligands ⓘ

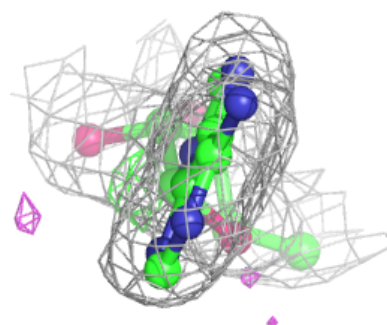
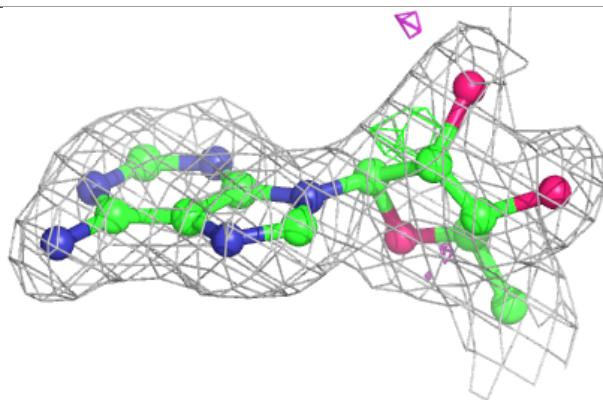
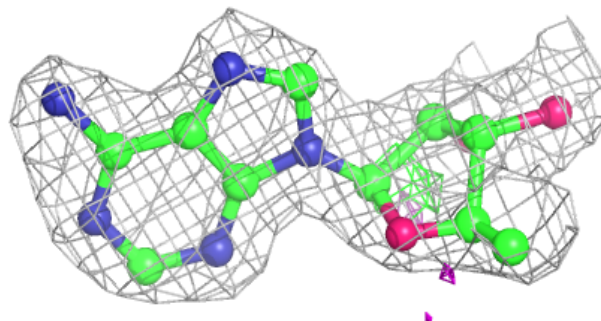
In the following table, the Atoms column lists the number of modelled atoms in the group and the number defined in the chemical component dictionary. The B-factors column lists the minimum, median, 95<sup>th</sup> percentile and maximum values of B factors of atoms in the group. The column labelled 'Q< 0.9' lists the number of atoms with occupancy less than 0.9.

Mol	Type	Chain	Res	Atoms	RSCC	RSR	B-factors(Å <sup>2</sup> )	Q<0.9
10	K	B	513	1/1	0.74	0.22	74,74,74,74	1
3	GOL	A	503	6/6	0.78	0.20	47,51,60,65	0
3	GOL	B	507	6/6	0.87	0.15	31,34,40,42	0
8	5AD	A	510[B]	18/18	0.92	0.12	21,28,30,30	18
3	GOL	B	508[A]	6/6	0.92	0.28	43,48,49,49	6
3	GOL	B	508[B]	6/6	0.92	0.28	42,48,49,50	6
6	SAH	A	508[A]	26/26	0.93	0.10	13,23,30,30	26
6	SAH	B	502[A]	26/26	0.95	0.08	10,16,20,20	26
5	NA	B	511	1/1	0.95	0.07	38,38,38,38	0
9	ICB	A	511	12/12	0.95	0.08	27,29,31,34	0
4	BR	A	504	1/1	0.96	0.08	47,47,47,47	1
4	BR	B	512	1/1	0.96	0.07	45,45,45,45	1
9	ICB	B	505	12/12	0.96	0.08	16,18,20,21	0
4	BR	A	505[A]	1/1	0.97	0.08	35,35,35,35	1
7	MET	A	509[B]	9/9	0.97	0.11	86,94,116,117	9
7	MET	B	503[B]	9/9	0.97	0.10	65,68,80,80	9
8	5AD	B	504[B]	18/18	0.97	0.09	14,18,20,20	18
4	BR	B	510	1/1	0.98	0.07	36,36,36,36	1
5	NA	A	507	1/1	0.98	0.09	37,37,37,37	0
3	GOL	A	502	6/6	0.98	0.07	27,29,33,38	0
3	GOL	B	506	6/6	0.99	0.11	18,22,26,29	0
4	BR	B	509	1/1	0.99	0.07	31,31,31,31	1
2	SF4	A	501	8/8	0.99	0.06	35,36,36,38	0
2	SF4	B	501	8/8	0.99	0.07	18,21,22,23	0
4	BR	A	506	1/1	0.99	0.10	36,36,36,36	1

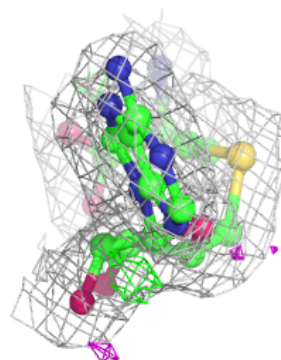
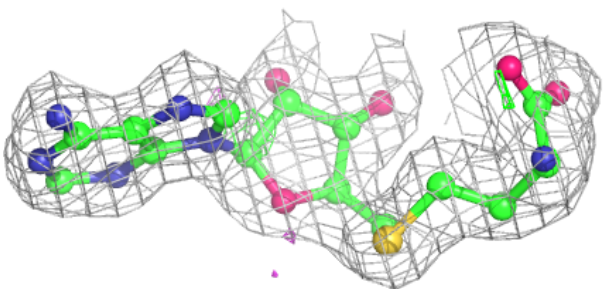
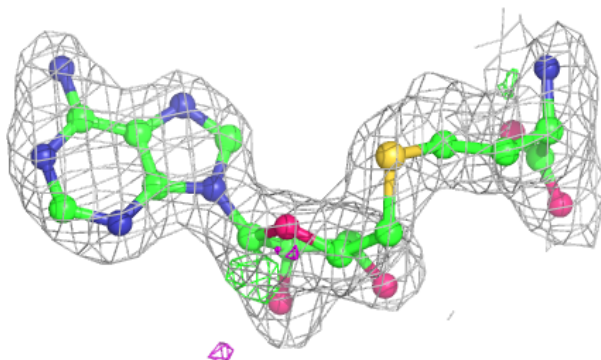
The following is a graphical depiction of the model fit to experimental electron density of all instances of the Ligand of Interest. In addition, ligands with molecular weight > 250 and outliers as shown on the geometry validation Tables will also be included. Each fit is shown from different orientation to approximate a three-dimensional view.

**Electron density around 5AD A 510 (B):**

$2mF_o-DF_c$  (at 0.7 rmsd) in gray  
 $mF_o-DF_c$  (at 3 rmsd) in purple (negative)  
and green (positive)

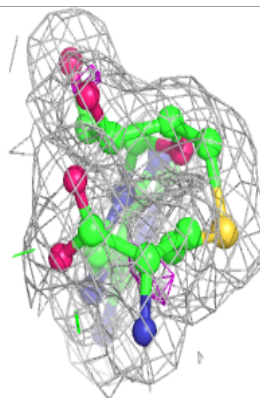
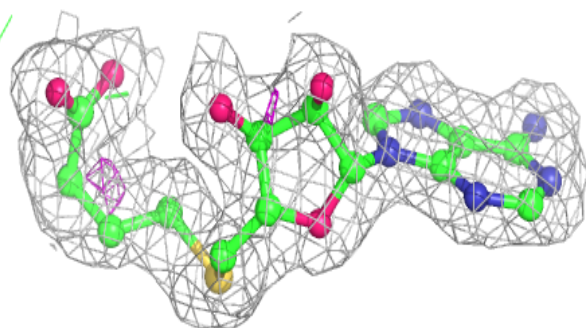
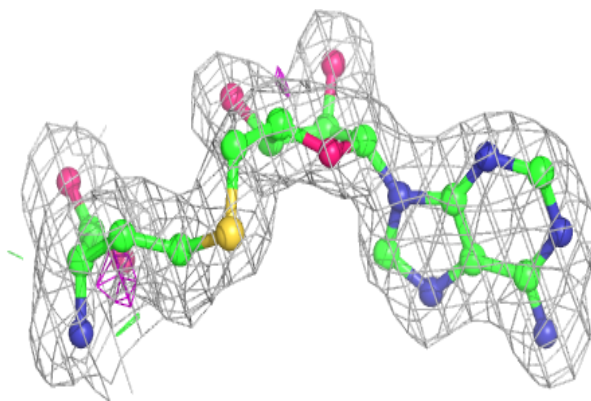
**Electron density around SAH A 508 (A):**

$2mF_o-DF_c$  (at 0.7 rmsd) in gray  
 $mF_o-DF_c$  (at 3 rmsd) in purple (negative)  
and green (positive)

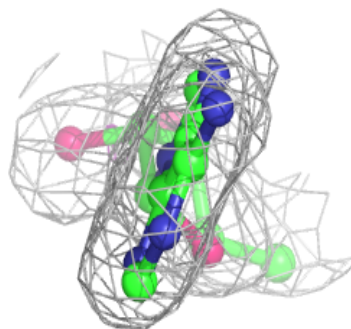
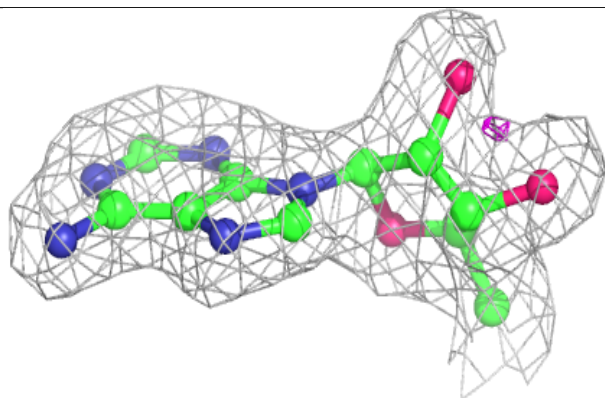
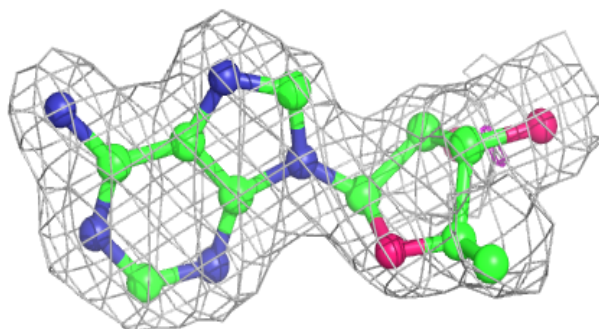


**Electron density around SAH B 502 (A):**

$2mF_o-DF_c$  (at 0.7 rmsd) in gray  
 $mF_o-DF_c$  (at 3 rmsd) in purple (negative)  
and green (positive)

**Electron density around 5AD B 504 (B):**

$2mF_o-DF_c$  (at 0.7 rmsd) in gray  
 $mF_o-DF_c$  (at 3 rmsd) in purple (negative)  
and green (positive)



## 6.5 Other polymers [i](#)

There are no such residues in this entry.