



Full wwPDB X-ray Structure Validation Report ⓘ

Jun 16, 2020 – 12:51 am BST

PDB ID : 6HTM
Title : X-ray structure of the tryptophan lyase NosL in complex with bound tryptamin
Authors : Amara, P.; Mouesca, J.M.; Bella, M.; Saragaglia, C.; Gambarelli, S.; Nicolet, Y.
Deposited on : 2018-10-04
Resolution : 1.70 Å(reported)

This is a Full wwPDB X-ray Structure Validation Report for a publicly released PDB entry.

We welcome your comments at validation@mail.wwpdb.org

A user guide is available at

<https://www.wwpdb.org/validation/2017/XrayValidationReportHelp>

with specific help available everywhere you see the ⓘ symbol.

The following versions of software and data (see [references ⓘ](#)) were used in the production of this report:

MolProbity : 4.02b-467
Mogul : 1.8.5 (274361), CSD as541be (2020)
Xtriage (Phenix) : 1.13
EDS : 2.11
buster-report : 1.1.7 (2018)
Percentile statistics : 20191225.v01 (using entries in the PDB archive December 25th 2019)
Refmac : 5.8.0158
CCP4 : 7.0.044 (Gargrove)
Ideal geometry (proteins) : Engh & Huber (2001)
Ideal geometry (DNA, RNA) : Parkinson et al. (1996)
Validation Pipeline (wwPDB-VP) : 2.11

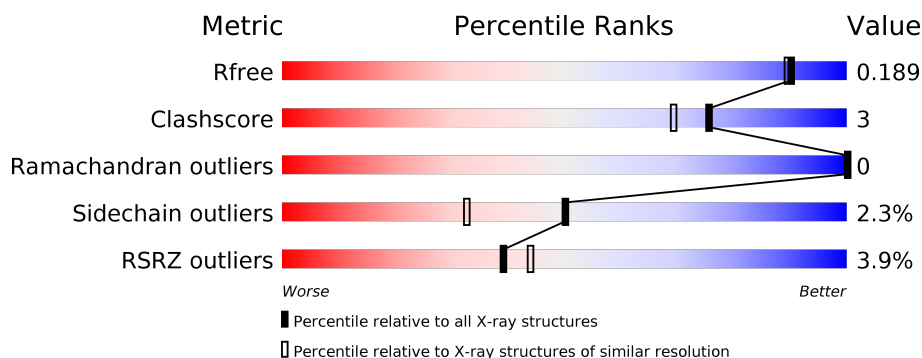
1 Overall quality at a glance

The following experimental techniques were used to determine the structure:

X-RAY DIFFRACTION

The reported resolution of this entry is 1.70 Å.

Percentile scores (ranging between 0-100) for global validation metrics of the entry are shown in the following graphic. The table shows the number of entries on which the scores are based.



Metric	Whole archive (#Entries)	Similar resolution (#Entries, resolution range(Å))
R_{free}	130704	4298 (1.70-1.70)
Clashscore	141614	4695 (1.70-1.70)
Ramachandran outliers	138981	4610 (1.70-1.70)
Sidechain outliers	138945	4610 (1.70-1.70)
RSRZ outliers	127900	4222 (1.70-1.70)

The table below summarises the geometric issues observed across the polymeric chains and their fit to the electron density. The red, orange, yellow and green segments on the lower bar indicate the fraction of residues that contain outliers for ≥ 3 , 2, 1 and 0 types of geometric quality criteria respectively. A grey segment represents the fraction of residues that are not modelled. The numeric value for each fraction is indicated below the corresponding segment, with a dot representing fractions $\leq 5\%$. The upper red bar (where present) indicates the fraction of residues that have poor fit to the electron density. The numeric value is given above the bar.

Mol	Chain	Length	Quality of chain
1	A	400	<div> <div>5%</div> <div> <div></div> <div>90%</div> <div>7%</div> <div>.</div> </div> </div>
1	B	400	<div> <div>2%</div> <div> <div></div> <div>86%</div> <div>9%</div> <div>..</div> </div> </div>

2 Entry composition [i](#)

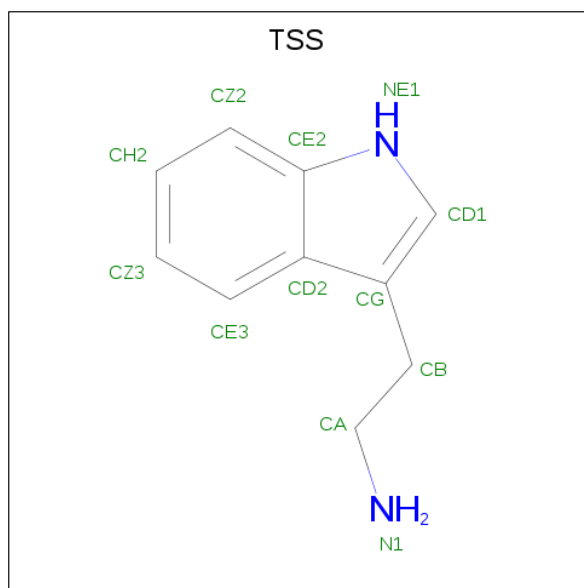
There are 10 unique types of molecules in this entry. The entry contains 6934 atoms, of which 0 are hydrogens and 0 are deuteriums.

In the tables below, the ZeroOcc column contains the number of atoms modelled with zero occupancy, the AltConf column contains the number of residues with at least one atom in alternate conformation and the Trace column contains the number of residues modelled with at most 2 atoms.

- Molecule 1 is a protein called 3-methyl-2-indolic acid synthase.

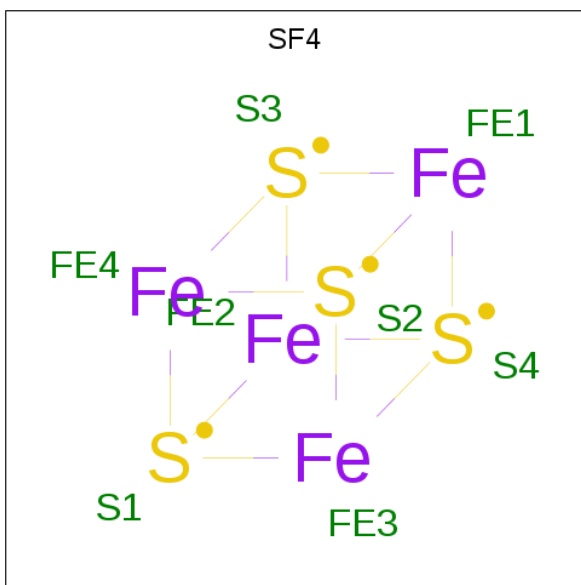
Mol	Chain	Residues	Atoms					ZeroOcc	AltConf	Trace
1	A	384	Total	C	N	O	S	0	2	0
			2962	1851	531	565	15			
1	B	384	Total	C	N	O	S	0	10	0
			3021	1892	540	571	18			

- Molecule 2 is 2-(1H-INDOL-3-YL)ETHANAMINE (three-letter code: TSS) (formula: C₁₀H₁₂N₂).



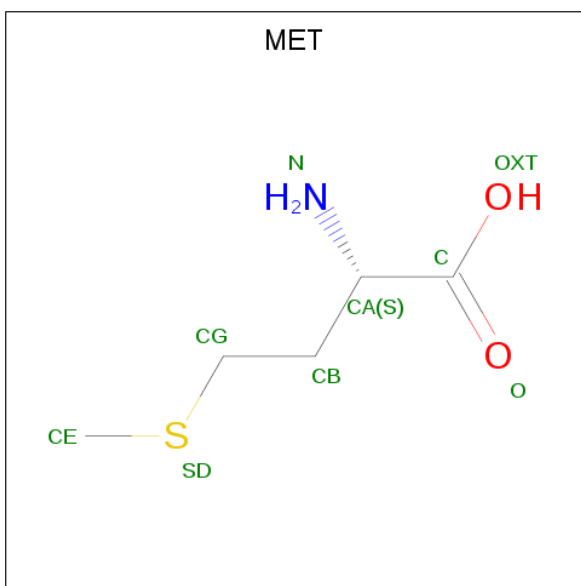
Mol	Chain	Residues	Atoms			ZeroOcc	AltConf
2	A	1	Total	C	N	0	1
			12	10	2		
2	B	1	Total	C	N	0	1
			12	10	2		

- Molecule 3 is IRON/SULFUR CLUSTER (three-letter code: SF4) (formula: Fe₄S₄).



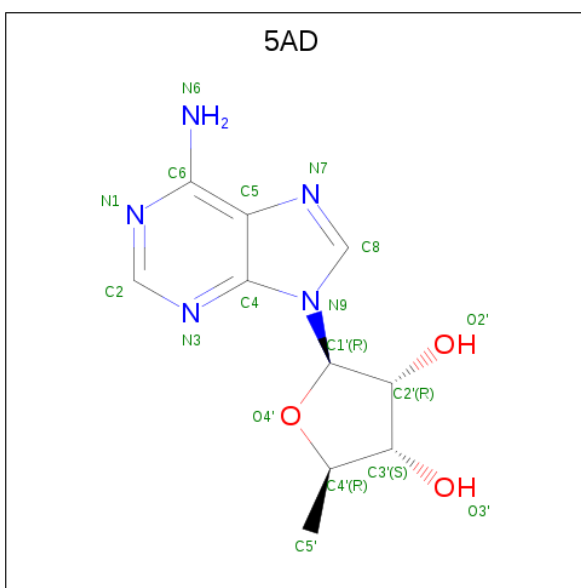
Mol	Chain	Residues	Atoms				ZeroOcc	AltConf
3	A	1	Total	Fe	S		0	0
			8	4	4			
3	B	1	Total	Fe	S		0	0
			8	4	4			

- Molecule 4 is METHIONINE (three-letter code: MET) (formula: $C_5H_{11}NO_2S$).



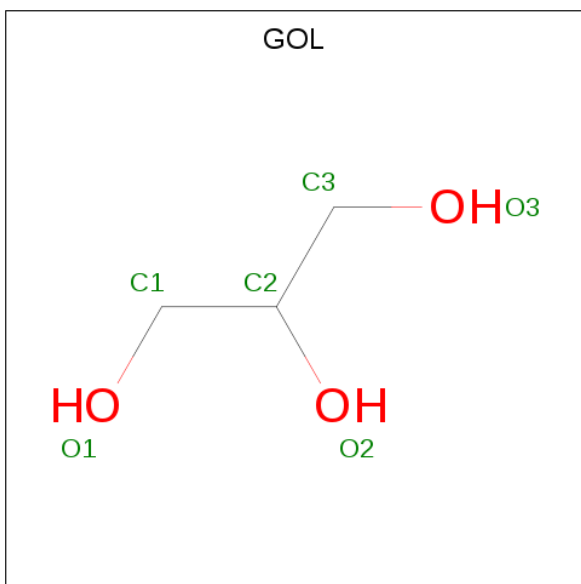
Mol	Chain	Residues	Atoms					ZeroOcc	AltConf
4	A	1	Total	C	N	O	S	0	0
			9	5	1	2	1		
4	B	1	Total	C	N	O	S	0	0
			9	5	1	2	1		

- Molecule 5 is 5'-DEOXYADENOSINE (three-letter code: 5AD) (formula: $C_{10}H_{13}N_5O_3$).



Mol	Chain	Residues	Atoms				ZeroOcc	AltConf
5	A	1	Total	C	N	O	0	0
			18	10	5	3		
5	B	1	Total	C	N	O	0	0
			18	10	5	3		

- Molecule 6 is GLYCEROL (three-letter code: GOL) (formula: $C_3H_8O_3$).



Mol	Chain	Residues	Atoms			ZeroOcc	AltConf
6	A	1	Total	C	O	0	0
			6	3	3		

Continued on next page...

Continued from previous page...

Mol	Chain	Residues	Atoms			ZeroOcc	AltConf
6	A	1	Total	C	O	0	0
			6	3	3		
6	B	1	Total	C	O	0	0
			6	3	3		
6	B	1	Total	C	O	0	0
			6	3	3		
6	B	1	Total	C	O	0	0
			6	3	3		
6	B	1	Total	C	O	0	0
			6	3	3		

- Molecule 7 is BROMIDE ION (three-letter code: BR) (formula: Br).

Mol	Chain	Residues	Atoms		ZeroOcc	AltConf
7	B	3	Total	Br	0	0
			3	3		
7	A	3	Total	Br	0	0
			3	3		

- Molecule 8 is CHLORIDE ION (three-letter code: CL) (formula: Cl).

Mol	Chain	Residues	Atoms		ZeroOcc	AltConf
8	B	3	Total	Cl	0	2
			4	4		
8	A	2	Total	Cl	0	1
			3	3		

- Molecule 9 is ZINC ION (three-letter code: ZN) (formula: Zn).

Mol	Chain	Residues	Atoms		ZeroOcc	AltConf
9	B	1	Total	Zn	0	0
			1	1		

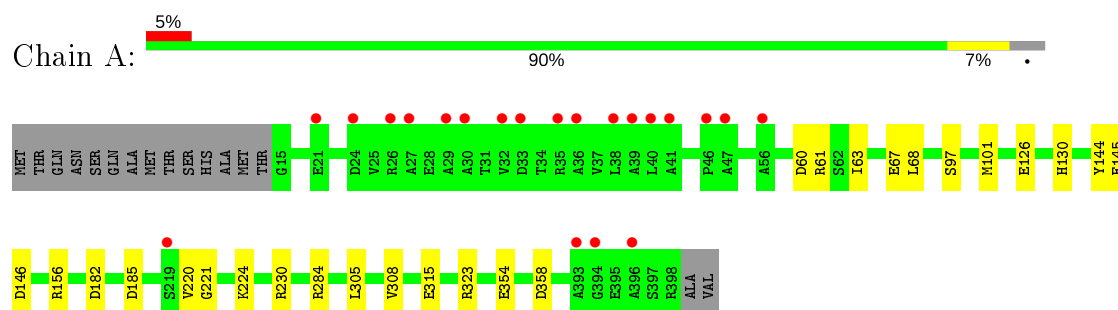
- Molecule 10 is water.

Mol	Chain	Residues	Atoms		ZeroOcc	AltConf
10	A	360	Total	O	0	8
			362	362		
10	B	444	Total	O	0	9
			445	445		

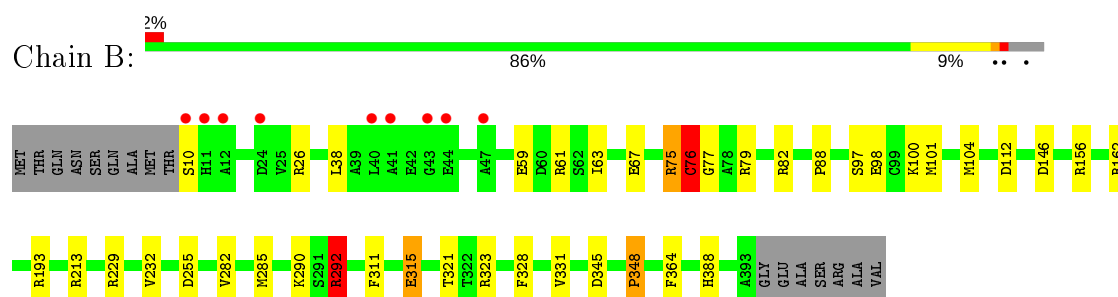
3 Residue-property plots [i](#)

These plots are drawn for all protein, RNA and DNA chains in the entry. The first graphic for a chain summarises the proportions of the various outlier classes displayed in the second graphic. The second graphic shows the sequence view annotated by issues in geometry and electron density. Residues are color-coded according to the number of geometric quality criteria for which they contain at least one outlier: green = 0, yellow = 1, orange = 2 and red = 3 or more. A red dot above a residue indicates a poor fit to the electron density ($RSRZ > 2$). Stretches of 2 or more consecutive residues without any outlier are shown as a green connector. Residues present in the sample, but not in the model, are shown in grey.

- Molecule 1: 3-methyl-2-indolic acid synthase



- Molecule 1: 3-methyl-2-indolic acid synthase



4 Data and refinement statistics

Property	Value	Source
Space group	P 1 2 1	Depositor
Cell constants a, b, c, α , β , γ	94.53 Å 47.14 Å 113.90 Å 90.00° 108.90° 90.00°	Depositor
Resolution (Å)	47.05 – 1.70 47.05 – 1.70	Depositor EDS
% Data completeness (in resolution range)	97.3 (47.05-1.70) 99.6 (47.05-1.70)	Depositor EDS
R_{merge}	(Not available)	Depositor
R_{sym}	0.06	Depositor
$\langle I/\sigma(I) \rangle$ ¹	2.00 (at 1.70 Å)	Xtriage
Refinement program	PHENIX (1.13_2998: ???)	Depositor
R, R_{free}	0.162 , 0.189 0.162 , 0.189	Depositor DCC
R_{free} test set	5125 reflections (4.90%)	wwPDB-VP
Wilson B-factor (Å ²)	22.9	Xtriage
Anisotropy	0.063	Xtriage
Bulk solvent k_{sol} (e/Å ³), B_{sol} (Å ²)	0.35 , 53.9	EDS
L-test for twinning ²	$\langle L \rangle = 0.50$, $\langle L^2 \rangle = 0.34$	Xtriage
Estimated twinning fraction	No twinning to report.	Xtriage
F_o, F_c correlation	0.97	EDS
Total number of atoms	6934	wwPDB-VP
Average B, all atoms (Å ²)	31.0	wwPDB-VP

Xtriage's analysis on translational NCS is as follows: *The largest off-origin peak in the Patterson function is 4.97% of the height of the origin peak. No significant pseudotranslation is detected.*

¹Intensities estimated from amplitudes.

²Theoretical values of $\langle |L| \rangle$, $\langle L^2 \rangle$ for acentric reflections are 0.5, 0.333 respectively for untwinned datasets, and 0.375, 0.2 for perfectly twinned datasets.

5 Model quality [i](#)

5.1 Standard geometry [i](#)

Bond lengths and bond angles in the following residue types are not validated in this section: GOL, ZN, CL, SF4, 5AD, BR, TSS

The Z score for a bond length (or angle) is the number of standard deviations the observed value is removed from the expected value. A bond length (or angle) with $|Z| > 5$ is considered an outlier worth inspection. RMSZ is the root-mean-square of all Z scores of the bond lengths (or angles).

Mol	Chain	Bond lengths		Bond angles	
		RMSZ	$\# Z > 5$	RMSZ	$\# Z > 5$
1	A	0.80	4/3028 (0.1%)	0.83	4/4103 (0.1%)
1	B	0.96	5/3110 (0.2%)	0.95	7/4210 (0.2%)
All	All	0.88	9/6138 (0.1%)	0.89	11/8313 (0.1%)

All (9) bond length outliers are listed below:

Mol	Chain	Res	Type	Atoms	Z	Observed(Å)	Ideal(Å)
1	B	76[A]	CYS	CB-SG	8.09	1.96	1.82
1	B	76[B]	CYS	CB-SG	8.09	1.96	1.82
1	B	67	GLU	CB-CG	-6.36	1.40	1.52
1	A	67	GLU	CG-CD	6.29	1.61	1.51
1	A	308	VAL	CB-CG1	-5.97	1.40	1.52
1	B	315	GLU	CD-OE2	-5.27	1.19	1.25
1	B	232	VAL	CB-CG2	5.24	1.63	1.52
1	A	67	GLU	CB-CG	5.12	1.61	1.52
1	A	144	TYR	CD1-CE1	5.06	1.47	1.39

All (11) bond angle outliers are listed below:

Mol	Chain	Res	Type	Atoms	Z	Observed(°)	Ideal(°)
1	B	156	ARG	NE-CZ-NH1	-8.89	115.86	120.30
1	B	76[A]	CYS	CA-CB-SG	7.71	127.89	114.00
1	B	76[B]	CYS	CA-CB-SG	7.71	127.89	114.00
1	B	162	ARG	NE-CZ-NH1	6.58	123.59	120.30
1	B	292	ARG	CA-CB-CG	6.25	127.15	113.40
1	A	358	ASP	CB-CG-OD1	-6.04	112.86	118.30
1	B	156	ARG	NE-CZ-NH2	6.03	123.31	120.30
1	A	156	ARG	NE-CZ-NH1	-5.43	117.58	120.30
1	B	75	ARG	NE-CZ-NH1	-5.40	117.60	120.30
1	A	182	ASP	CB-CG-OD1	5.28	123.05	118.30

Continued on next page...

Continued from previous page...

Mol	Chain	Res	Type	Atoms	Z	Observed(°)	Ideal(°)
1	A	60	ASP	CB-CG-OD2	-5.07	113.74	118.30

There are no chirality outliers.

There are no planarity outliers.

5.2 Too-close contacts ⓘ

In the following table, the Non-H and H(model) columns list the number of non-hydrogen atoms and hydrogen atoms in the chain respectively. The H(added) column lists the number of hydrogen atoms added and optimized by MolProbity. The Clashes column lists the number of clashes within the asymmetric unit, whereas Symm-Clashes lists symmetry related clashes.

Mol	Chain	Non-H	H(model)	H(added)	Clashes	Symm-Clashes
1	A	2962	0	2827	11	0
1	B	3021	0	2926	28	0
2	A	12	0	12	1	0
2	B	12	0	12	4	0
3	A	8	0	0	0	0
3	B	8	0	0	1	0
4	A	9	0	8	0	0
4	B	9	0	8	0	0
5	A	18	0	13	0	0
5	B	18	0	13	0	0
6	A	12	0	16	0	0
6	B	24	0	32	0	0
7	A	3	0	0	0	0
7	B	3	0	0	1	0
8	A	3	0	0	0	0
8	B	4	0	0	1	0
9	B	1	0	0	0	0
10	A	362	0	0	4	0
10	B	445	0	0	9	0
All	All	6934	0	5867	37	0

The all-atom clashscore is defined as the number of clashes found per 1000 atoms (including hydrogen atoms). The all-atom clashscore for this structure is 3.

All (37) close contacts within the same asymmetric unit are listed below, sorted by their clash magnitude.

Atom-1	Atom-2	Interatomic distance (Å)	Clash overlap (Å)
1:B:146[B]:ASP:OD2	10:B:601:HOH:O	1.96	0.83
1:A:354[B]:GLU:OE2	1:B:193:ARG:NH2	2.13	0.82
1:B:112[B]:ASP:OD1	10:B:602:HOH:O	2.04	0.76
1:B:213:ARG:HD3	1:B:292:ARG:NH2	2.01	0.75
1:B:146[A]:ASP:OD1	10:B:603:HOH:O	2.05	0.74
1:B:255:ASP:OD1	10:B:604:HOH:O	2.07	0.72
1:B:76[B]:CYS:O	10:B:605:HOH:O	2.09	0.70
1:A:146:ASP:OD1	10:A:2602:HOH:O	2.10	0.68
1:A:354[A]:GLU:OE2	1:B:193:ARG:NH2	2.28	0.67
1:B:75:ARG:HD3	1:B:311:PHE:CE2	2.31	0.65
1:A:126:GLU:OE1	10:A:2601:HOH:O	2.17	0.57
1:B:213:ARG:HD3	1:B:292:ARG:HH21	1.70	0.56
1:B:82:ARG:HD2	10:B:922:HOH:O	2.08	0.53
1:A:130:HIS:NE2	10:A:2601:HOH:O	2.01	0.52
1:A:185:ASP:OD1	10:A:2603:HOH:O	2.19	0.51
1:B:388:HIS:HA	7:B:510:BR:BR	2.68	0.49
1:B:98:GLU:OE2	10:B:606:HOH:O	2.20	0.49
1:B:77[A]:GLY:HA2	10:B:605:HOH:O	2.13	0.48
1:B:364:PHE:CZ	2:B:502[C]:TSS:HZ3	2.50	0.47
1:B:285[B]:MET:CE	1:B:290:LYS:HE2	2.45	0.46
1:B:88:PRO:HG3	2:B:502[C]:TSS:CE2	2.45	0.45
1:A:63:ILE:HG22	1:A:68:LEU:HG	1.99	0.44
1:B:282:VAL:HG22	10:B:686:HOH:O	2.19	0.43
1:B:100:LYS:HB3	1:B:292:ARG:HB2	2.00	0.42
1:B:26:ARG:HH12	1:B:59:GLU:CD	2.22	0.42
1:B:10:SER:HA	1:B:229:ARG:HB2	2.00	0.42
1:B:104:MET:HE2	3:B:501:SF4:S3	2.60	0.42
1:B:38:LEU:HD11	1:B:63:ILE:HD13	2.01	0.42
1:A:323:ARG:HH22	2:A:2501[C]:TSS:HA1	1.85	0.41
1:A:145:GLU:OE2	1:A:221:GLY:HA2	2.21	0.41
1:B:321:THR:HB	8:B:513[B]:CL:CL	2.58	0.41
1:B:345:ASP:HB3	1:B:348:PRO:HB3	2.01	0.41
1:A:61:ARG:HA	1:A:61:ARG:HD3	1.93	0.41
1:B:364:PHE:HZ	2:B:502[C]:TSS:HZ3	1.86	0.41
1:B:323:ARG:HH22	2:B:502[C]:TSS:HA1	1.87	0.40
1:B:328:PHE:HA	1:B:331[B]:VAL:HG12	2.04	0.40
1:A:224:LYS:HE3	1:A:230:ARG:CZ	2.52	0.40

There are no symmetry-related clashes.

5.3 Torsion angles

5.3.1 Protein backbone

In the following table, the Percentiles column shows the percent Ramachandran outliers of the chain as a percentile score with respect to all X-ray entries followed by that with respect to entries of similar resolution.

The Analysed column shows the number of residues for which the backbone conformation was analysed, and the total number of residues.

Mol	Chain	Analysed	Favoured	Allowed	Outliers	Percentiles	
1	A	384/400 (96%)	371 (97%)	13 (3%)	0	100	100
1	B	392/400 (98%)	378 (96%)	14 (4%)	0	100	100
All	All	776/800 (97%)	749 (96%)	27 (4%)	0	100	100

There are no Ramachandran outliers to report.

5.3.2 Protein sidechains

In the following table, the Percentiles column shows the percent sidechain outliers of the chain as a percentile score with respect to all X-ray entries followed by that with respect to entries of similar resolution.

The Analysed column shows the number of residues for which the sidechain conformation was analysed, and the total number of residues.

Mol	Chain	Analysed	Rotameric	Outliers	Percentiles	
1	A	300/329 (91%)	294 (98%)	6 (2%)	55	38
1	B	313/329 (95%)	304 (97%)	9 (3%)	42	23
All	All	613/658 (93%)	598 (98%)	15 (2%)	50	31

All (15) residues with a non-rotameric sidechain are listed below:

Mol	Chain	Res	Type
1	A	97	SER
1	A	101	MET
1	A	220	VAL
1	A	284	ARG
1	A	305	LEU
1	A	315	GLU
1	B	61	ARG
1	B	76[A]	CYS

Continued on next page...

Continued from previous page...

Mol	Chain	Res	Type
1	B	76[B]	CYS
1	B	79	ARG
1	B	97	SER
1	B	101	MET
1	B	292	ARG
1	B	315	GLU
1	B	348	PRO

Some sidechains can be flipped to improve hydrogen bonding and reduce clashes. There are no such sidechains identified.

5.3.3 RNA [i](#)

There are no RNA molecules in this entry.

5.4 Non-standard residues in protein, DNA, RNA chains [i](#)

There are no non-standard protein/DNA/RNA residues in this entry.

5.5 Carbohydrates [i](#)

There are no carbohydrates in this entry.

5.6 Ligand geometry [i](#)

Of 28 ligands modelled in this entry, 14 are monoatomic - leaving 14 for Mogul analysis.

In the following table, the Counts columns list the number of bonds (or angles) for which Mogul statistics could be retrieved, the number of bonds (or angles) that are observed in the model and the number of bonds (or angles) that are defined in the Chemical Component Dictionary. The Link column lists molecule types, if any, to which the group is linked. The Z score for a bond length (or angle) is the number of standard deviations the observed value is removed from the expected value. A bond length (or angle) with $|Z| > 2$ is considered an outlier worth inspection. RMSZ is the root-mean-square of all Z scores of the bond lengths (or angles).

Mol	Type	Chain	Res	Link	Bond lengths			Bond angles		
					Counts	RMSZ	# Z > 2	Counts	RMSZ	# Z > 2
2	TSS	B	502[C]	-	11,13,13	2.41	5 (45%)	11,17,17	1.54	3 (27%)
6	GOL	A	2506	-	5,5,5	0.75	0	5,5,5	1.40	1 (20%)
6	GOL	A	2505	-	5,5,5	0.69	0	5,5,5	1.13	1 (20%)

Mol	Type	Chain	Res	Link	Bond lengths			Bond angles		
					Counts	RMSZ	# Z > 2	Counts	RMSZ	# Z > 2
6	GOL	B	508	-	5,5,5	0.79	0	5,5,5	1.11	1 (20%)
6	GOL	B	506	-	5,5,5	1.08	0	5,5,5	0.80	0
5	5AD	B	504	-	17,20,20	2.85	9 (52%)	15,30,30	1.99	4 (26%)
6	GOL	B	505	-	5,5,5	1.03	0	5,5,5	0.99	0
3	SF4	B	501	1,4	0,12,12	0.00	-	-	-	-
2	TSS	A	2501[C]	-	11,13,13	2.32	3 (27%)	11,17,17	1.59	2 (18%)
3	SF4	A	2502	1,4	0,12,12	0.00	-	-	-	-
5	5AD	A	2504	-	17,20,20	3.14	9 (52%)	15,30,30	2.07	5 (33%)
6	GOL	B	507	-	5,5,5	1.25	0	5,5,5	1.11	0

In the following table, the Chirals column lists the number of chiral outliers, the number of chiral centers analysed, the number of these observed in the model and the number defined in the Chemical Component Dictionary. Similar counts are reported in the Torsion and Rings columns. '-' means no outliers of that kind were identified.

Mol	Type	Chain	Res	Link	Chirals	Torsions	Rings
2	TSS	B	502[C]	-	-	0/3/3/3	0/2/2/2
6	GOL	A	2506	-	-	0/4/4/4	-
6	GOL	A	2505	-	-	0/4/4/4	-
6	GOL	B	508	-	-	0/4/4/4	-
6	GOL	B	506	-	-	0/4/4/4	-
5	5AD	B	504	-	-	0/0/20/20	0/3/3/3
6	GOL	B	505	-	-	0/4/4/4	-
3	SF4	B	501	1,4	-	-	0/6/5/5
2	TSS	A	2501[C]	-	-	0/3/3/3	0/2/2/2
3	SF4	A	2502	1,4	-	-	0/6/5/5
5	5AD	A	2504	-	-	0/0/20/20	0/3/3/3
6	GOL	B	507	-	-	0/4/4/4	-

All (26) bond length outliers are listed below:

Mol	Chain	Res	Type	Atoms	Z	Observed(Å)	Ideal(Å)
5	A	2504	5AD	C3'-C2'	-6.86	1.34	1.53
5	A	2504	5AD	C3'-C4'	6.28	1.61	1.52
5	B	504	5AD	C3'-C2'	-5.92	1.37	1.53
5	A	2504	5AD	O4'-C1'	5.64	1.49	1.41
5	B	504	5AD	C3'-C4'	5.36	1.60	1.52
2	A	2501[C]	TSS	CZ2-CE2	-4.96	1.33	1.41
5	B	504	5AD	O4'-C1'	4.79	1.47	1.41
2	B	502[C]	TSS	CZ2-CE2	-4.76	1.33	1.41
2	B	502[C]	TSS	CE3-CD2	-4.09	1.33	1.42

Continued on next page...

Continued from previous page...

Mol	Chain	Res	Type	Atoms	Z	Observed(Å)	Ideal(Å)
2	A	2501[C]	TSS	CE3-CD2	-3.96	1.34	1.42
5	A	2504	5AD	O4'-C4'	-3.63	1.33	1.44
5	B	504	5AD	C2'-C1'	2.99	1.58	1.53
5	B	504	5AD	C6-N6	2.91	1.44	1.34
2	A	2501[C]	TSS	CD2-CE2	-2.82	1.35	1.42
5	A	2504	5AD	C6-N6	2.80	1.44	1.34
2	B	502[C]	TSS	CD2-CE2	-2.80	1.35	1.42
5	B	504	5AD	O4'-C4'	-2.76	1.36	1.44
5	A	2504	5AD	O2'-C2'	2.61	1.49	1.43
5	A	2504	5AD	C2-N3	2.51	1.36	1.32
5	B	504	5AD	O2'-C2'	2.50	1.48	1.43
5	B	504	5AD	O3'-C3'	2.42	1.48	1.43
2	B	502[C]	TSS	CD1-NE1	-2.42	1.31	1.36
5	A	2504	5AD	O3'-C3'	2.41	1.48	1.43
5	B	504	5AD	C5'-C4'	2.15	1.56	1.51
2	B	502[C]	TSS	CE2-NE1	-2.09	1.32	1.38
5	A	2504	5AD	C2'-C1'	2.03	1.56	1.53

All (17) bond angle outliers are listed below:

Mol	Chain	Res	Type	Atoms	Z	Observed(°)	Ideal(°)
5	B	504	5AD	N3-C2-N1	-4.69	121.35	128.68
5	A	2504	5AD	N3-C2-N1	-4.16	122.17	128.68
2	A	2501[C]	TSS	CE3-CD2-CE2	4.00	123.47	118.17
5	B	504	5AD	C1'-N9-C4	-3.83	119.92	126.64
5	A	2504	5AD	C5'-C4'-C3'	-3.58	111.94	115.70
5	A	2504	5AD	C1'-N9-C4	-2.99	121.38	126.64
5	B	504	5AD	C3'-C2'-C1'	2.94	105.40	100.98
2	B	502[C]	TSS	CB-CG-CD1	-2.81	121.26	127.19
5	A	2504	5AD	C4-C5-N7	-2.57	106.72	109.40
5	A	2504	5AD	C3'-C2'-C1'	2.50	104.74	100.98
6	A	2505	GOL	C3-C2-C1	-2.39	102.39	111.70
2	B	502[C]	TSS	CZ3-CE3-CD2	-2.30	117.71	120.89
6	A	2506	GOL	C3-C2-C1	-2.28	102.84	111.70
2	A	2501[C]	TSS	CE3-CD2-CG	-2.28	130.23	134.42
5	B	504	5AD	O4'-C1'-C2'	-2.27	103.61	106.93
2	B	502[C]	TSS	CE3-CD2-CE2	2.15	121.02	118.17
6	B	508	GOL	C3-C2-C1	-2.04	103.78	111.70

There are no chirality outliers.

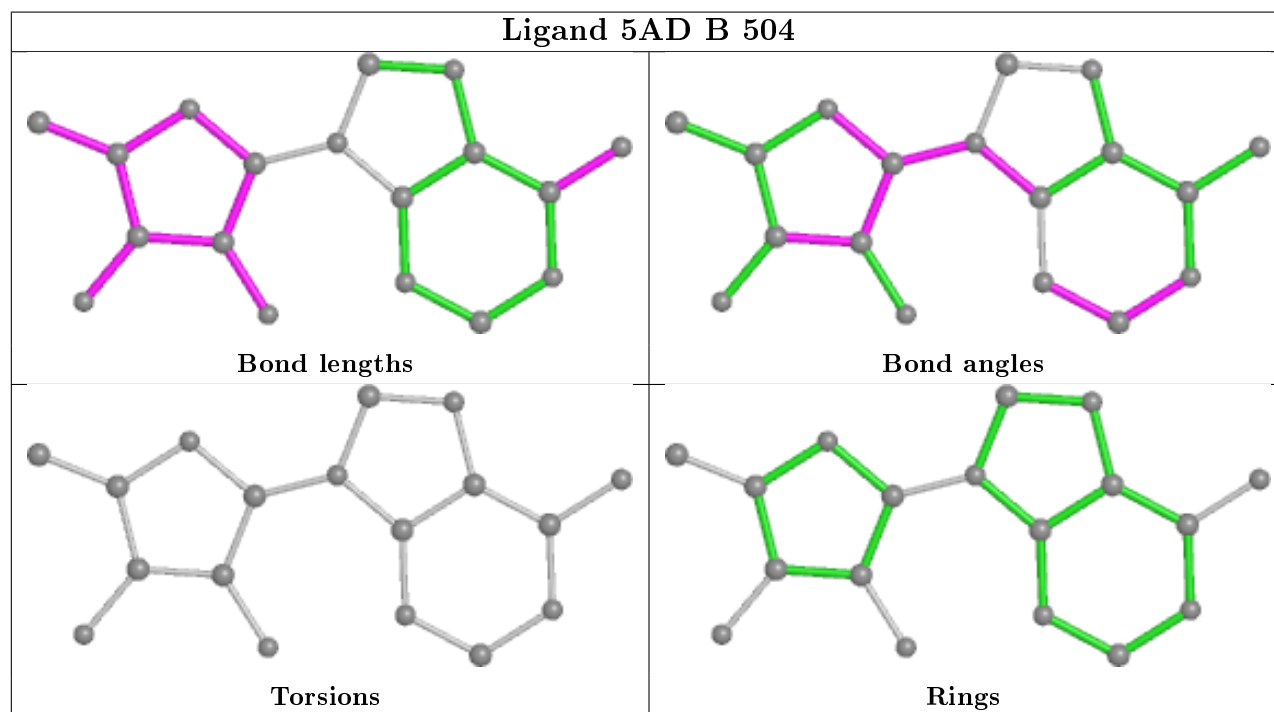
There are no torsion outliers.

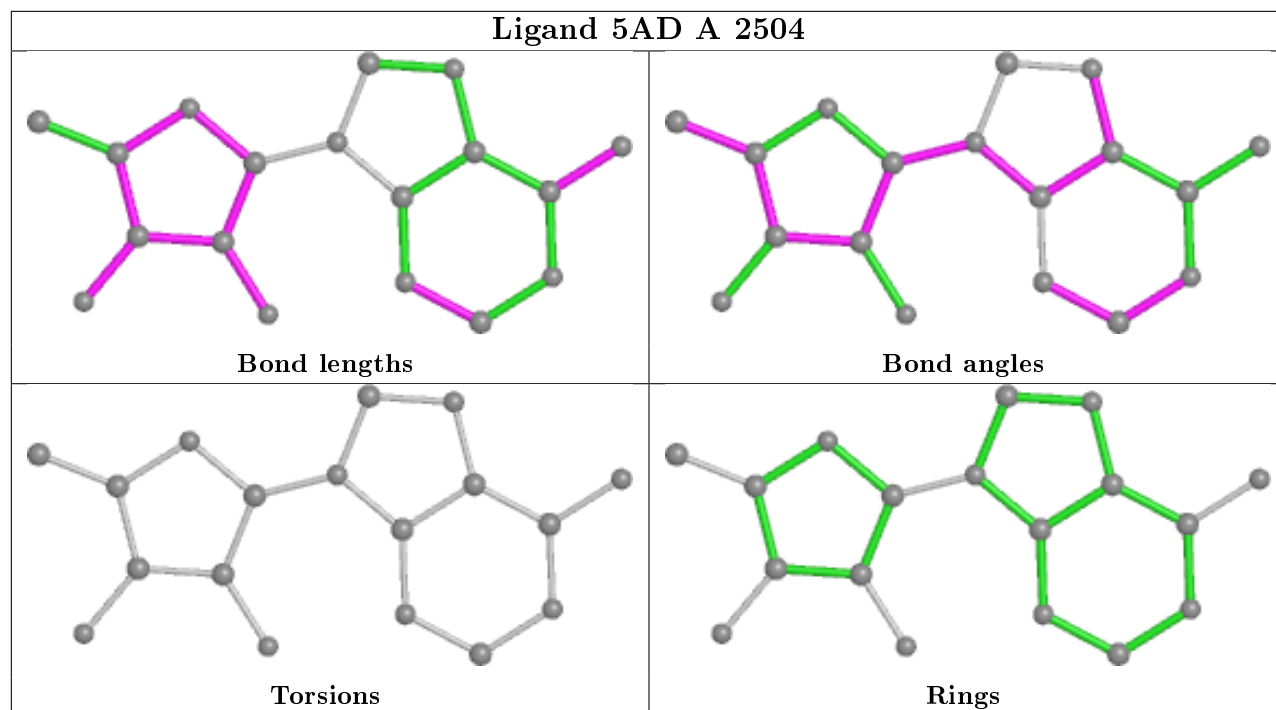
There are no ring outliers.

3 monomers are involved in 6 short contacts:

Mol	Chain	Res	Type	Clashes	Symm-Clashes
2	B	502[C]	TSS	4	0
3	B	501	SF4	1	0
2	A	2501[C]	TSS	1	0

The following is a two-dimensional graphical depiction of Mogul quality analysis of bond lengths, bond angles, torsion angles, and ring geometry for all instances of the Ligand of Interest. In addition, ligands with molecular weight > 250 and outliers as shown on the validation Tables will also be included. For torsion angles, if less than 5% of the Mogul distribution of torsion angles is within 10 degrees of the torsion angle in question, then that torsion angle is considered an outlier. Any bond that is central to one or more torsion angles identified as an outlier by Mogul will be highlighted in the graph. For rings, the root-mean-square deviation (RMSD) between the ring in question and similar rings identified by Mogul is calculated over all ring torsion angles. If the average RMSD is greater than 60 degrees and the minimal RMSD between the ring in question and any Mogul-identified rings is also greater than 60 degrees, then that ring is considered an outlier. The outliers are highlighted in purple. The color gray indicates Mogul did not find sufficient equivalents in the CSD to analyse the geometry.





5.7 Other polymers [i](#)

There are no such residues in this entry.

5.8 Polymer linkage issues [i](#)

There are no chain breaks in this entry.

6 Fit of model and data ⓘ

6.1 Protein, DNA and RNA chains ⓘ

In the following table, the column labelled ‘#RSRZ> 2’ contains the number (and percentage) of RSRZ outliers, followed by percent RSRZ outliers for the chain as percentile scores relative to all X-ray entries and entries of similar resolution. The OWAB column contains the minimum, median, 95th percentile and maximum values of the occupancy-weighted average B-factor per residue. The column labelled ‘Q< 0.9’ lists the number of (and percentage) of residues with an average occupancy less than 0.9.

Mol	Chain	Analysed	<RSRZ>	#RSRZ>2	OWAB(Å ²)	Q<0.9
1	A	384/400 (96%)	-0.08	21 (5%) 25 27	20, 31, 56, 82	0
1	B	384/400 (96%)	-0.29	9 (2%) 60 65	15, 24, 45, 83	0
All	All	768/800 (96%)	-0.19	30 (3%) 39 44	15, 28, 53, 83	0

All (30) RSRZ outliers are listed below:

Mol	Chain	Res	Type	RSRZ
1	B	41	ALA	5.1
1	A	47	ALA	4.1
1	A	394	GLY	3.8
1	A	393	ALA	3.8
1	A	38	LEU	3.8
1	A	24	ASP	3.3
1	B	44	GLU	3.1
1	A	41	ALA	3.0
1	A	30	ALA	2.9
1	B	10	SER	2.9
1	A	29	ALA	2.9
1	A	46	PRO	2.8
1	B	24	ASP	2.7
1	B	47	ALA	2.6
1	A	33	ASP	2.6
1	A	396	ALA	2.5
1	A	27	ALA	2.5
1	A	219	SER	2.5
1	A	21	GLU	2.4
1	B	11	HIS	2.4
1	A	26	ARG	2.3
1	B	40	LEU	2.3
1	A	32	VAL	2.3
1	A	56	ALA	2.2

Continued on next page...

Continued from previous page...

Mol	Chain	Res	Type	RSRZ
1	B	12	ALA	2.2
1	A	35	ARG	2.1
1	A	40	LEU	2.1
1	A	39	ALA	2.1
1	A	36	ALA	2.0
1	B	43	GLY	2.0

6.2 Non-standard residues in protein, DNA, RNA chains [i](#)

There are no non-standard protein/DNA/RNA residues in this entry.

6.3 Carbohydrates [i](#)

There are no carbohydrates in this entry.

6.4 Ligands [i](#)

In the following table, the Atoms column lists the number of modelled atoms in the group and the number defined in the chemical component dictionary. The B-factors column lists the minimum, median, 95th percentile and maximum values of B factors of atoms in the group. The column labelled 'Q<0.9' lists the number of atoms with occupancy less than 0.9.

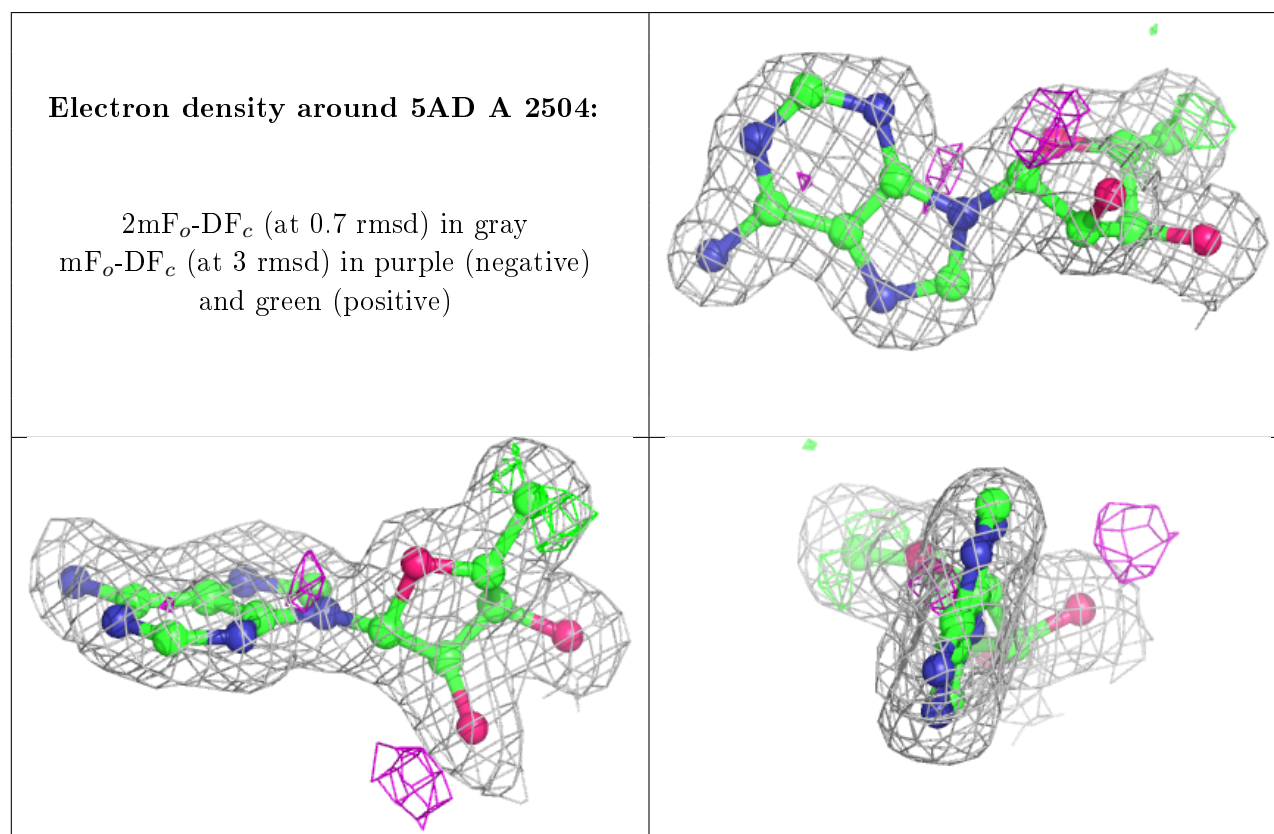
Mol	Type	Chain	Res	Atoms	RSCC	RSR	B-factors(Å ²)	Q<0.9
8	CL	B	514[A]	1/1	0.53	0.10	48,48,48,48	1
6	GOL	B	506	6/6	0.81	0.14	53,57,58,61	0
2	TSS	A	2501[C]	12/12	0.86	0.13	33,34,35,35	12
5	5AD	A	2504	18/18	0.86	0.10	19,25,28,29	0
6	GOL	A	2506	6/6	0.89	0.13	43,48,54,58	0
6	GOL	B	508	6/6	0.90	0.20	49,58,59,60	0
2	TSS	B	502[C]	12/12	0.91	0.23	23,24,36,37	12
5	5AD	B	504	18/18	0.93	0.07	17,19,20,21	0
8	CL	B	513[B]	1/1	0.94	0.12	24,24,24,24	1
8	CL	B	513[A]	1/1	0.94	0.12	24,24,24,24	1
8	CL	A	2511[B]	1/1	0.95	0.06	33,33,33,33	1
8	CL	A	2511[A]	1/1	0.95	0.06	35,35,35,35	1
6	GOL	B	505	6/6	0.96	0.10	22,26,29,33	0
3	SF4	A	2502	8/8	0.96	0.07	22,23,24,27	0
7	BR	A	2507	1/1	0.96	0.03	51,51,51,51	1
6	GOL	B	507	6/6	0.96	0.11	29,30,34,37	0
7	BR	A	2508	1/1	0.97	0.08	37,37,37,37	1

Continued on next page...

Continued from previous page...

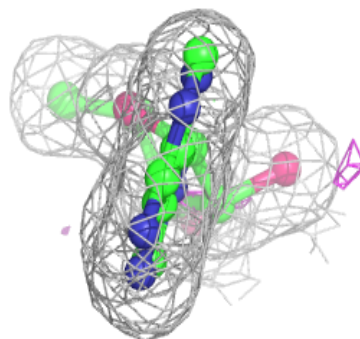
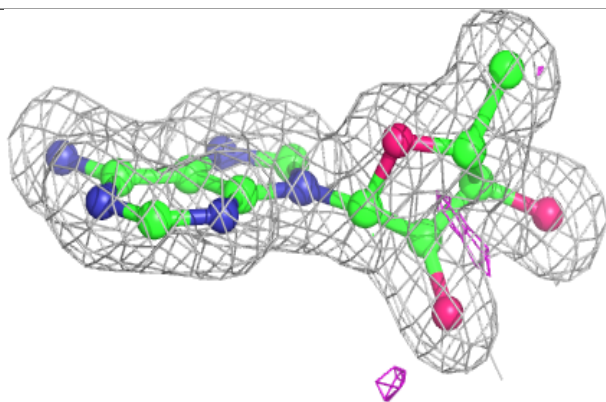
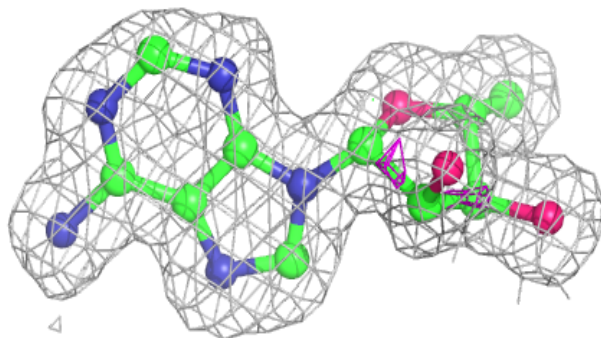
Mol	Type	Chain	Res	Atoms	RSCC	RSR	B-factors(\AA^2)	Q<0.9
7	BR	B	511	1/1	0.97	0.05	39,39,39,39	1
6	GOL	A	2505	6/6	0.97	0.09	30,30,34,35	0
4	MET	A	2503	9/9	0.97	0.10	23,28,30,32	0
4	MET	B	503	9/9	0.98	0.08	16,17,20,20	0
7	BR	B	510	1/1	0.98	0.07	38,38,38,38	1
7	BR	A	2509	1/1	0.98	0.08	41,41,41,41	1
8	CL	B	512	1/1	0.99	0.09	24,24,24,24	0
8	CL	A	2510	1/1	0.99	0.05	31,31,31,31	0
7	BR	B	509	1/1	0.99	0.07	35,35,35,35	1
3	SF4	B	501	8/8	0.99	0.07	17,19,20,20	0
9	ZN	B	515	1/1	0.99	0.04	31,31,31,31	1

The following is a graphical depiction of the model fit to experimental electron density of all instances of the Ligand of Interest. In addition, ligands with molecular weight > 250 and outliers as shown on the geometry validation Tables will also be included. Each fit is shown from different orientation to approximate a three-dimensional view.



Electron density around 5AD B 504:

$2mF_o-DF_c$ (at 0.7 rmsd) in gray
 mF_o-DF_c (at 3 rmsd) in purple (negative)
and green (positive)



6.5 Other polymers [i](#)

There are no such residues in this entry.