



Full wwPDB X-ray Structure Validation Report ⓘ

May 15, 2020 – 09:37 pm BST

PDB ID : 5HUT
Title : Structure of Candida albicans trehalose-6-phosphate synthase in complex with UDP-glucose
Authors : Miao, Y.; Brennan, R.G.
Deposited on : 2016-01-27
Resolution : 1.90 Å(reported)

This is a Full wwPDB X-ray Structure Validation Report for a publicly released PDB entry.

We welcome your comments at validation@mail.wwpdb.org

A user guide is available at

<https://www.wwpdb.org/validation/2017/XrayValidationReportHelp>

with specific help available everywhere you see the ⓘ symbol.

The following versions of software and data (see [references ⓘ](#)) were used in the production of this report:

MolProbity : 4.02b-467
Mogul : 1.8.5 (274361), CSD as541be (2020)
Xtriage (Phenix) : 1.13
EDS : 2.11
buster-report : 1.1.7 (2018)
Percentile statistics : 20191225.v01 (using entries in the PDB archive December 25th 2019)
Refmac : 5.8.0158
CCP4 : 7.0.044 (Gargrove)
Ideal geometry (proteins) : Engh & Huber (2001)
Ideal geometry (DNA, RNA) : Parkinson et al. (1996)
Validation Pipeline (wwPDB-VP) : 2.11

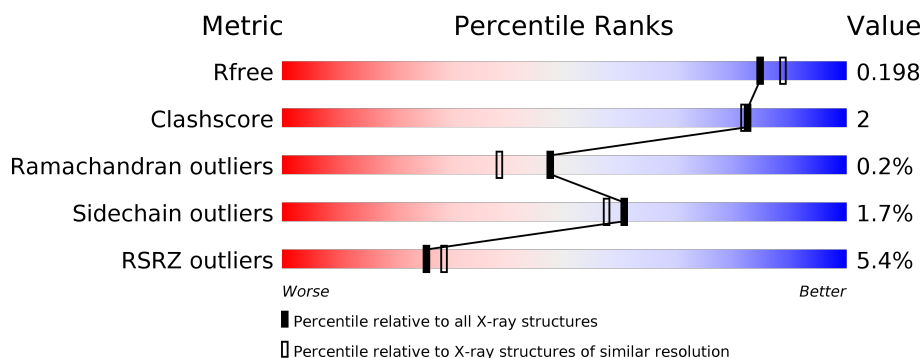
1 Overall quality at a glance

The following experimental techniques were used to determine the structure:

X-RAY DIFFRACTION

The reported resolution of this entry is 1.90 Å.

Percentile scores (ranging between 0-100) for global validation metrics of the entry are shown in the following graphic. The table shows the number of entries on which the scores are based.



Metric	Whole archive (#Entries)	Similar resolution (#Entries, resolution range(Å))
R_{free}	130704	6207 (1.90-1.90)
Clashscore	141614	6847 (1.90-1.90)
Ramachandran outliers	138981	6760 (1.90-1.90)
Sidechain outliers	138945	6760 (1.90-1.90)
RSRZ outliers	127900	6082 (1.90-1.90)

The table below summarises the geometric issues observed across the polymeric chains and their fit to the electron density. The red, orange, yellow and green segments on the lower bar indicate the fraction of residues that contain outliers for ≥ 3 , 2, 1 and 0 types of geometric quality criteria respectively. A grey segment represents the fraction of residues that are not modelled. The numeric value for each fraction is indicated below the corresponding segment, with a dot representing fractions $\leq 5\%$. The upper red bar (where present) indicates the fraction of residues that have poor fit to the electron density. The numeric value is given above the bar.

Mol	Chain	Length	Quality of chain
1	A	478	<div> <div>3%</div> <div> <div></div> <div>93%</div> <div>5%</div> </div> </div>
1	B	478	<div> <div>7%</div> <div> <div></div> <div>90%</div> <div>7%</div> </div> </div>

2 Entry composition [i](#)

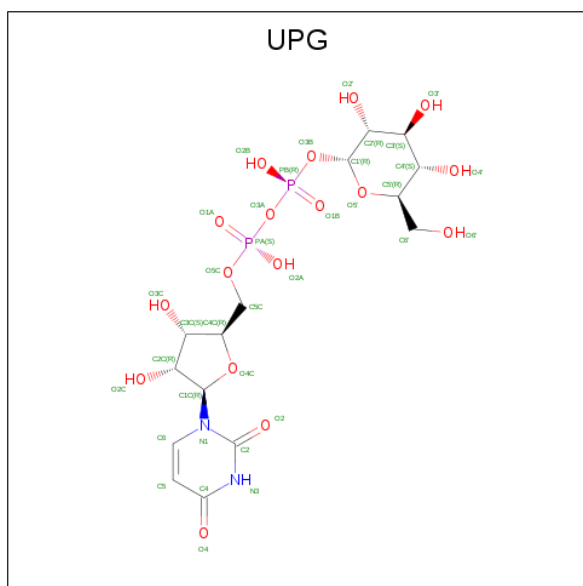
There are 6 unique types of molecules in this entry. The entry contains 15873 atoms, of which 7660 are hydrogens and 0 are deuteriums.

In the tables below, the ZeroOcc column contains the number of atoms modelled with zero occupancy, the AltConf column contains the number of residues with at least one atom in alternate conformation and the Trace column contains the number of residues modelled with at most 2 atoms.

- Molecule 1 is a protein called Alpha,alpha-trehalose-phosphate synthase [UDP-forming].

Mol	Chain	Residues	Atoms						ZeroOcc	AltConf	Trace
1	A	469	Total	C	H	N	O	S	0	0	0
			7526	2440	3754	620	701	11			
1	B	464	Total	C	H	N	O	S	0	1	0
			7483	2431	3734	615	692	11			

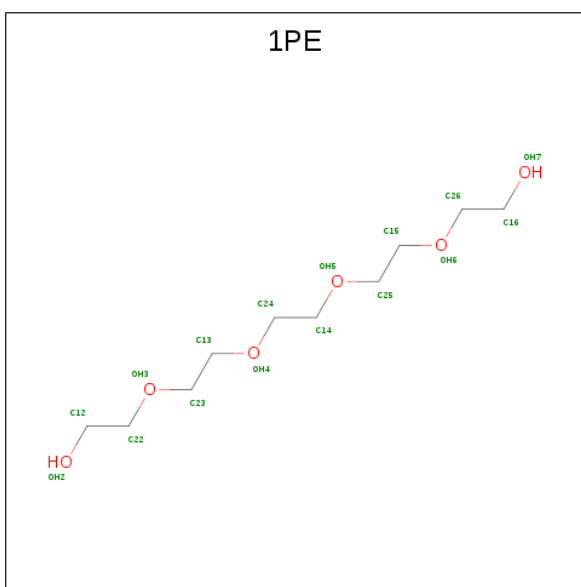
- Molecule 2 is URIDINE-5'-DIPHOSPHATE-GLUCOSE (three-letter code: UPG) (formula: $C_{15}H_{24}N_2O_{17}P_2$) (labeled as "Ligand of Interest" by author).





Mol	Chain	Residues	Atoms			ZeroOcc	AltConf
3	A	1	Total	O	S	0	0
			5	4	1		
3	A	1	Total	O	S	0	0
			5	4	1		
3	A	1	Total	O	S	0	0
			5	4	1		
3	A	1	Total	O	S	0	0
			5	4	1		
3	B	1	Total	O	S	0	0
			5	4	1		
3	B	1	Total	O	S	0	0
			5	4	1		
3	B	1	Total	O	S	0	0
			5	4	1		

- Molecule 4 is PENTAETHYLENE GLYCOL (three-letter code: 1PE) (formula: C₁₀H₂₂O₆).



Mol	Chain	Residues	Atoms				ZeroOcc	AltConf
4	A	1	Total	C	H	O	0	0
			38	10	22	6		
4	A	1	Total	C	H	O	0	0
			38	10	22	6		
4	B	1	Total	C	H	O	0	0
			38	10	22	6		
4	B	1	Total	C	H	O	0	0
			38	10	22	6		

- Molecule 5 is SODIUM ION (three-letter code: NA) (formula: Na).

Mol	Chain	Residues	Atoms		ZeroOcc	AltConf
5	B	1	Total	Na	0	0
			1	1		
5	A	1	Total	Na	0	0
			1	1		

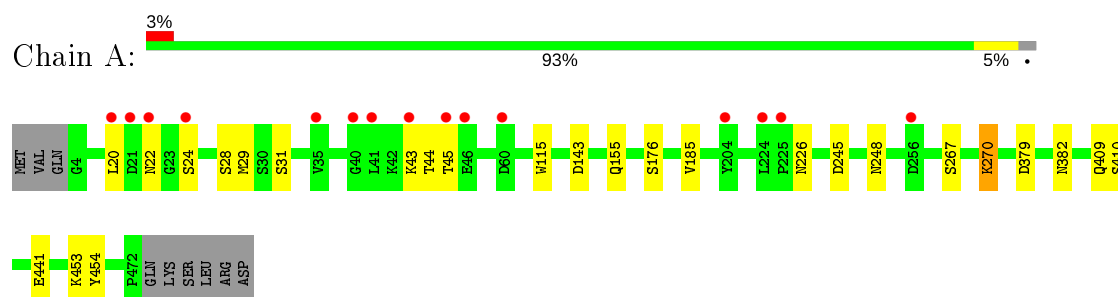
- Molecule 6 is water.

Mol	Chain	Residues	Atoms		ZeroOcc	AltConf
6	A	228	Total	O	0	0
			228	228		
6	B	214	Total	O	0	0
			214	214		

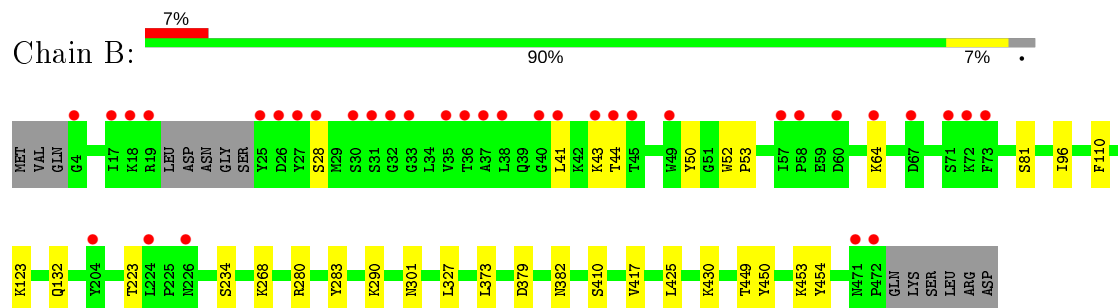
3 Residue-property plots [i](#)

These plots are drawn for all protein, RNA and DNA chains in the entry. The first graphic for a chain summarises the proportions of the various outlier classes displayed in the second graphic. The second graphic shows the sequence view annotated by issues in geometry and electron density. Residues are color-coded according to the number of geometric quality criteria for which they contain at least one outlier: green = 0, yellow = 1, orange = 2 and red = 3 or more. A red dot above a residue indicates a poor fit to the electron density ($RSRZ > 2$). Stretches of 2 or more consecutive residues without any outlier are shown as a green connector. Residues present in the sample, but not in the model, are shown in grey.

- Molecule 1: Alpha,alpha-trehalose-phosphate synthase [UDP-forming]



- Molecule 1: Alpha,alpha-trehalose-phosphate synthase [UDP-forming]



4 Data and refinement statistics

Property	Value	Source
Space group	P 64	Depositor
Cell constants a, b, c, α , β , γ	98.71Å 98.71Å 187.65Å 90.00° 90.00° 120.00°	Depositor
Resolution (Å)	35.29 – 1.90 47.73 – 1.90	Depositor EDS
% Data completeness (in resolution range)	95.2 (35.29-1.90) 95.2 (47.73-1.90)	Depositor EDS
R_{merge}	0.07	Depositor
R_{sym}	(Not available)	Depositor
$\langle I/\sigma(I) \rangle$ ¹	2.06 (at 1.90Å)	Xtriage
Refinement program	PHENIX 1.16	Depositor
R, R_{free}	0.170 , 0.196 0.172 , 0.198	Depositor DCC
R_{free} test set	2007 reflections (2.47%)	wwPDB-VP
Wilson B-factor (Å ²)	27.9	Xtriage
Anisotropy	0.454	Xtriage
Bulk solvent k_{sol} (e/Å ³), B_{sol} (Å ²)	0.41 , 47.5	EDS
L-test for twinning ²	$\langle L \rangle = 0.50$, $\langle L^2 \rangle = 0.33$	Xtriage
Estimated twinning fraction	0.051 for h,-h-k,-l	Xtriage
F_o, F_c correlation	0.97	EDS
Total number of atoms	15873	wwPDB-VP
Average B, all atoms (Å ²)	42.0	wwPDB-VP

Xtriage's analysis on translational NCS is as follows: *The largest off-origin peak in the Patterson function is 2.73% of the height of the origin peak. No significant pseudotranslation is detected.*

¹Intensities estimated from amplitudes.

²Theoretical values of $\langle |L| \rangle$, $\langle L^2 \rangle$ for acentric reflections are 0.5, 0.333 respectively for untwinned datasets, and 0.375, 0.2 for perfectly twinned datasets.

5 Model quality

5.1 Standard geometry

Bond lengths and bond angles in the following residue types are not validated in this section: UPG, 1PE, SO4, NA

The Z score for a bond length (or angle) is the number of standard deviations the observed value is removed from the expected value. A bond length (or angle) with $|Z| > 5$ is considered an outlier worth inspection. RMSZ is the root-mean-square of all Z scores of the bond lengths (or angles).

Mol	Chain	Bond lengths		Bond angles	
		RMSZ	# Z >5	RMSZ	# Z >5
1	A	0.26	0/3864	0.44	0/5235
1	B	0.26	0/3845	0.43	0/5209
All	All	0.26	0/7709	0.44	0/10444

There are no bond length outliers.

There are no bond angle outliers.

There are no chirality outliers.

There are no planarity outliers.

5.2 Too-close contacts

In the following table, the Non-H and H(model) columns list the number of non-hydrogen atoms and hydrogen atoms in the chain respectively. The H(added) column lists the number of hydrogen atoms added and optimized by MolProbity. The Clashes column lists the number of clashes within the asymmetric unit, whereas Symm-Clashes lists symmetry related clashes.

Mol	Chain	Non-H	H(model)	H(added)	Clashes	Symm-Clashes
1	A	3772	3754	3754	13	0
1	B	3749	3734	3734	17	1
2	A	72	42	44	3	0
2	B	72	42	44	8	0
3	A	20	0	0	0	0
3	B	20	0	0	0	0
4	A	32	44	44	0	0
4	B	32	44	44	0	0
5	A	1	0	0	0	0
5	B	1	0	0	0	0
6	A	228	0	0	5	1

Continued on next page...

Continued from previous page...

Mol	Chain	Non-H	H(model)	H(added)	Clashes	Symm-Clashes
6	B	214	0	0	2	1
All	All	8213	7660	7664	38	2

The all-atom clashscore is defined as the number of clashes found per 1000 atoms (including hydrogen atoms). The all-atom clashscore for this structure is 2.

All (38) close contacts within the same asymmetric unit are listed below, sorted by their clash magnitude.

Atom-1	Atom-2	Interatomic distance (Å)	Clash overlap (Å)
2:B:501[A]:UPG:O2B	2:B:501[A]:UPG:O2'	1.86	0.94
2:B:501[B]:UPG:O2B	2:B:501[B]:UPG:O2'	1.93	0.85
1:B:410:SER:OG	6:B:601:HOH:O	1.97	0.79
1:A:22:ASN:ND2	6:A:603:HOH:O	2.20	0.75
1:B:223:THR:OG1	6:B:602:HOH:O	2.05	0.75
2:A:501[A]:UPG:O2'	2:A:501[A]:UPG:O2B	2.10	0.69
1:A:155:GLN:OE1	6:A:601:HOH:O	2.12	0.66
1:A:410:SER:OG	6:A:602:HOH:O	2.15	0.64
1:B:301:ASN:OD1	1:B:430:LYS:HE3	2.01	0.60
1:B:43:LYS:O	1:B:44:THR:HG23	2.07	0.54
1:B:41:LEU:O	1:B:44:THR:OG1	2.25	0.53
1:B:96:ILE:HD11	1:B:110:PHE:HA	1.91	0.52
2:B:501[A]:UPG:PB	2:B:501[A]:UPG:HO2'	2.34	0.51
1:A:453:LYS:HD3	1:A:454:TYR:CE1	2.45	0.50
2:B:501[B]:UPG:PB	2:B:501[B]:UPG:HO2'	2.33	0.50
1:B:290:LYS:HG3	1:B:373:LEU:HD13	1.93	0.49
1:B:50:TYR:OH	1:B:132:GLN:NE2	2.46	0.49
1:B:449:THR:O	1:B:453:LYS:HD2	2.13	0.48
1:A:226:ASN:N	1:A:226:ASN:OD1	2.47	0.48
1:A:20:LEU:HD12	1:A:24:SER:OG	2.13	0.48
2:B:501[A]:UPG:PB	2:B:501[A]:UPG:O2'	2.72	0.47
1:B:301:ASN:OD1	1:B:430:LYS:CE	2.64	0.46
1:A:115:TRP:CE2	1:A:185:VAL:HG11	2.51	0.45
1:A:267:SER:O	1:A:270:LYS:HE2	2.16	0.45
1:A:441:GLU:OE1	6:A:604:HOH:O	2.21	0.44
2:A:501[B]:UPG:H5'	2:A:501[B]:UPG:O2'	2.18	0.44
1:A:409:GLN:NE2	6:A:610:HOH:O	2.37	0.44
1:A:43:LYS:HE2	1:A:43:LYS:HB2	1.79	0.44
1:A:245:ASP:HB3	1:A:248:ASN:ND2	2.32	0.44
1:B:283:TYR:N	1:B:327:LEU:HD22	2.32	0.44
1:B:410:SER:HB3	1:B:450:TYR:CZ	2.53	0.43
1:B:280:ARG:HD3	2:B:501[A]:UPG:H1'	2.00	0.43

Continued on next page...

Continued from previous page...

Atom-1	Atom-2	Interatomic distance (Å)	Clash overlap (Å)
1:B:280:ARG:HE	2:B:501[A]:UPG:C1'	2.32	0.43
1:B:280:ARG:CD	2:B:501[A]:UPG:H1'	2.48	0.43
2:A:501[B]:UPG:C5'	2:A:501[B]:UPG:O2'	2.64	0.42
1:A:44:THR:OG1	1:A:45:THR:N	2.53	0.42
1:B:417:VAL:HG21	1:B:425:LEU:HD13	2.02	0.41
1:B:52:TRP:CD1	1:B:53:PRO:HD2	2.56	0.40

All (2) symmetry-related close contacts are listed below. The label for Atom-2 includes the symmetry operator and encoded unit-cell translations to be applied.

Atom-1	Atom-2	Interatomic distance (Å)	Clash overlap (Å)
1:B:453:LYS:HZ3	1:B:454:TYR:OH[4_755]	1.52	0.08
6:A:803:HOH:O	6:B:731:HOH:O[4_745]	2.19	0.01

5.3 Torsion angles ⓘ

5.3.1 Protein backbone ⓘ

In the following table, the Percentiles column shows the percent Ramachandran outliers of the chain as a percentile score with respect to all X-ray entries followed by that with respect to entries of similar resolution.

The Analysed column shows the number of residues for which the backbone conformation was analysed, and the total number of residues.

Mol	Chain	Analysed	Favoured	Allowed	Outliers	Percentiles	
1	A	467/478 (98%)	457 (98%)	9 (2%)	1 (0%)	47	38
1	B	461/478 (96%)	446 (97%)	14 (3%)	1 (0%)	47	38
All	All	928/956 (97%)	903 (97%)	23 (2%)	2 (0%)	47	38

All (2) Ramachandran outliers are listed below:

Mol	Chain	Res	Type
1	A	382	ASN
1	B	382	ASN

5.3.2 Protein sidechains ⓘ

In the following table, the Percentiles column shows the percent sidechain outliers of the chain as a percentile score with respect to all X-ray entries followed by that with respect to entries of similar resolution.

The Analysed column shows the number of residues for which the sidechain conformation was analysed, and the total number of residues.

Mol	Chain	Analysed	Rotameric	Outliers	Percentiles	
1	A	420/429 (98%)	413 (98%)	7 (2%)	60	57
1	B	417/429 (97%)	410 (98%)	7 (2%)	60	57
All	All	837/858 (98%)	823 (98%)	14 (2%)	60	57

All (14) residues with a non-rotameric sidechain are listed below:

Mol	Chain	Res	Type
1	A	28	SER
1	A	29	MET
1	A	31	SER
1	A	143	ASP
1	A	176	SER
1	A	270	LYS
1	A	379	ASP
1	B	28	SER
1	B	64	LYS
1	B	81	SER
1	B	123	LYS
1	B	234	SER
1	B	268	LYS
1	B	379	ASP

Some sidechains can be flipped to improve hydrogen bonding and reduce clashes. All (2) such sidechains are listed below:

Mol	Chain	Res	Type
1	A	248	ASN
1	B	132	GLN

5.3.3 RNA ⓘ

There are no RNA molecules in this entry.

5.4 Non-standard residues in protein, DNA, RNA chains ⓘ

There are no non-standard protein/DNA/RNA residues in this entry.

5.5 Carbohydrates ⓘ

There are no carbohydrates in this entry.

5.6 Ligand geometry ⓘ

Of 18 ligands modelled in this entry, 2 are monoatomic - leaving 16 for Mogul analysis.

In the following table, the Counts columns list the number of bonds (or angles) for which Mogul statistics could be retrieved, the number of bonds (or angles) that are observed in the model and the number of bonds (or angles) that are defined in the Chemical Component Dictionary. The Link column lists molecule types, if any, to which the group is linked. The Z score for a bond length (or angle) is the number of standard deviations the observed value is removed from the expected value. A bond length (or angle) with $|Z| > 2$ is considered an outlier worth inspection. RMSZ is the root-mean-square of all Z scores of the bond lengths (or angles).

Mol	Type	Chain	Res	Link	Bond lengths			Bond angles		
					Counts	RMSZ	$\# Z > 2$	Counts	RMSZ	$\# Z > 2$
4	1PE	B	506	-	15,15,15	0.53	0	14,14,14	0.30	0
4	1PE	A	506	-	15,15,15	0.53	0	14,14,14	0.22	0
3	SO4	A	505	-	4,4,4	0.14	0	6,6,6	0.06	0
3	SO4	B	505	-	4,4,4	0.15	0	6,6,6	0.04	0
3	SO4	A	504	-	4,4,4	0.14	0	6,6,6	0.06	0
3	SO4	B	502	-	4,4,4	0.16	0	6,6,6	0.10	0
4	1PE	A	507	-	15,15,15	0.52	0	14,14,14	0.30	0
2	UPG	A	501[A]	-	31,38,38	0.78	1 (3%)	41,58,58	1.55	8 (19%)
3	SO4	A	503	-	4,4,4	0.15	0	6,6,6	0.07	0
2	UPG	A	501[B]	-	31,38,38	0.80	1 (3%)	41,58,58	1.45	6 (14%)
3	SO4	A	502	-	4,4,4	0.16	0	6,6,6	0.08	0
2	UPG	B	501[B]	-	31,38,38	0.80	1 (3%)	41,58,58	1.52	9 (21%)
3	SO4	B	504	-	4,4,4	0.14	0	6,6,6	0.06	0
3	SO4	B	503	-	4,4,4	0.14	0	6,6,6	0.07	0
2	UPG	B	501[A]	-	31,38,38	0.76	1 (3%)	41,58,58	1.55	10 (24%)
4	1PE	B	507	-	15,15,15	0.53	0	14,14,14	0.26	0

In the following table, the Chirals column lists the number of chiral outliers, the number of chiral centers analysed, the number of these observed in the model and the number defined in the Chemical Component Dictionary. Similar counts are reported in the Torsion and Rings columns. '-' means no outliers of that kind were identified.

Mol	Type	Chain	Res	Link	Chirals	Torsions	Rings
4	1PE	B	506	-	-	8/13/13/13	-
4	1PE	A	506	-	-	5/13/13/13	-
4	1PE	B	507	-	-	9/13/13/13	-
2	UPG	A	501[A]	-	-	7/21/59/59	0/3/3/3
2	UPG	A	501[B]	-	-	7/21/59/59	0/3/3/3
4	1PE	A	507	-	-	10/13/13/13	-
2	UPG	B	501[B]	-	-	10/21/59/59	0/3/3/3
2	UPG	B	501[A]	-	-	10/21/59/59	0/3/3/3

All (4) bond length outliers are listed below:

Mol	Chain	Res	Type	Atoms	Z	Observed(Å)	Ideal(Å)
2	B	501[B]	UPG	C4-N3	3.20	1.38	1.33
2	A	501[B]	UPG	C4-N3	3.18	1.38	1.33
2	A	501[A]	UPG	C4-N3	3.17	1.38	1.33
2	B	501[A]	UPG	C4-N3	3.13	1.38	1.33

All (33) bond angle outliers are listed below:

Mol	Chain	Res	Type	Atoms	Z	Observed(°)	Ideal(°)
2	A	501[B]	UPG	C5-C4-N3	-3.86	114.82	123.31
2	B	501[A]	UPG	C5-C4-N3	-3.86	114.82	123.31
2	B	501[B]	UPG	C5-C4-N3	-3.86	114.83	123.31
2	A	501[A]	UPG	C5-C4-N3	-3.86	114.83	123.31
2	A	501[B]	UPG	O3A-PB-O3B	3.81	110.16	102.48
2	A	501[A]	UPG	O4C-C1C-C2C	-3.60	101.66	106.93
2	B	501[A]	UPG	O4C-C1C-C2C	-3.58	101.69	106.93
2	A	501[B]	UPG	O4C-C1C-C2C	-3.56	101.73	106.93
2	B	501[B]	UPG	O4C-C1C-C2C	-3.44	101.91	106.93
2	B	501[B]	UPG	PB-O3B-C1'	3.25	132.29	119.74
2	B	501[A]	UPG	O3A-PB-O3B	2.88	108.30	102.48
2	B	501[A]	UPG	O2'-C2'-C3'	-2.87	103.71	110.35
2	A	501[A]	UPG	PB-O3B-C1'	2.83	130.66	119.74
2	B	501[A]	UPG	PB-O3B-C1'	2.79	130.51	119.74
2	A	501[A]	UPG	O3A-PB-O3B	2.51	107.55	102.48
2	A	501[A]	UPG	O4'-C4'-C3'	-2.46	104.67	110.35
2	A	501[A]	UPG	O4'-C4'-C5'	-2.30	103.58	109.30
2	A	501[A]	UPG	O5'-C1'-C2'	-2.25	105.58	110.35
2	B	501[A]	UPG	O3C-C3C-C4C	-2.21	104.67	111.05
2	B	501[A]	UPG	O4'-C4'-C5'	-2.19	103.85	109.30
2	B	501[B]	UPG	O3C-C3C-C4C	-2.19	104.71	111.05

Continued on next page...

Continued from previous page...

Mol	Chain	Res	Type	Atoms	Z	Observed(°)	Ideal(°)
2	B	501[B]	UPG	O4'-C4'-C3'	-2.19	105.29	110.35
2	A	501[B]	UPG	O3'-C3'-C2'	-2.17	105.33	110.35
2	A	501[B]	UPG	O3C-C3C-C4C	-2.15	104.82	111.05
2	B	501[A]	UPG	O3'-C3'-C2'	-2.13	105.42	110.35
2	B	501[A]	UPG	O4'-C4'-C3'	-2.11	105.47	110.35
2	A	501[A]	UPG	O3C-C3C-C4C	-2.08	105.02	111.05
2	A	501[B]	UPG	O3'-C3'-C4'	-2.08	105.53	110.35
2	B	501[B]	UPG	O3A-PB-O3B	2.05	106.62	102.48
2	B	501[B]	UPG	O3'-C3'-C4'	-2.05	105.62	110.35
2	B	501[B]	UPG	O4'-C4'-C5'	-2.03	104.24	109.30
2	B	501[B]	UPG	O5'-C1'-C2'	-2.02	106.08	110.35
2	B	501[A]	UPG	O3'-C3'-C4'	-2.00	105.72	110.35

There are no chirality outliers.

All (66) torsion outliers are listed below:

Mol	Chain	Res	Type	Atoms
2	A	501[A]	UPG	C2'-C1'-O3B-PB
2	A	501[A]	UPG	O5'-C1'-O3B-PB
2	A	501[B]	UPG	O4C-C1C-N1-C6
2	A	501[B]	UPG	PA-O3A-PB-O3B
2	A	501[B]	UPG	O5'-C1'-O3B-PB
2	B	501[B]	UPG	O4C-C4C-C5C-O5C
2	B	501[B]	UPG	PB-O3A-PA-O5C
2	B	501[B]	UPG	C1'-O3B-PB-O2B
2	B	501[B]	UPG	C2'-C1'-O3B-PB
2	B	501[B]	UPG	O5'-C1'-O3B-PB
2	B	501[A]	UPG	C2C-C1C-N1-C6
2	B	501[A]	UPG	O4C-C1C-N1-C6
2	B	501[A]	UPG	C2'-C1'-O3B-PB
2	B	501[A]	UPG	C4'-C5'-C6'-O6'
2	A	501[B]	UPG	C3C-C4C-C5C-O5C
2	A	501[B]	UPG	O4C-C4C-C5C-O5C
2	B	501[B]	UPG	C3C-C4C-C5C-O5C
4	B	507	1PE	OH4-C13-C23-OH3
2	B	501[A]	UPG	O5'-C5'-C6'-O6'
4	B	507	1PE	OH5-C14-C24-OH4
4	A	506	1PE	OH4-C13-C23-OH3
4	A	507	1PE	OH7-C16-C26-OH6
4	B	506	1PE	OH5-C14-C24-OH4
4	A	507	1PE	OH5-C14-C24-OH4
4	B	506	1PE	OH2-C12-C22-OH3

Continued on next page...

Continued from previous page...

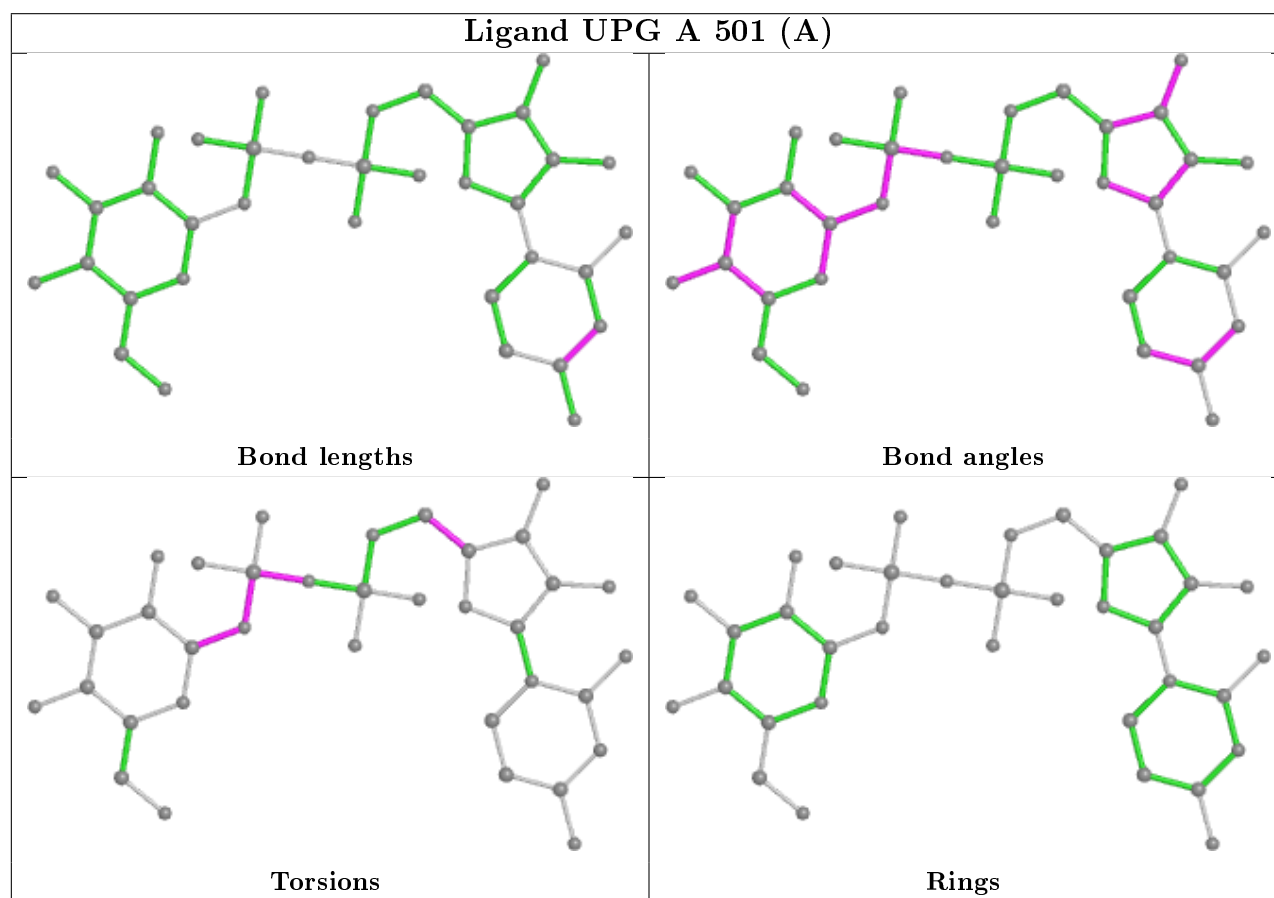
Mol	Chain	Res	Type	Atoms
2	B	501[B]	UPG	C1'-O3B-PB-O3A
2	A	501[B]	UPG	C2'-C1'-O3B-PB
4	B	506	1PE	OH6-C15-C25-OH5
4	B	507	1PE	OH6-C15-C25-OH5
4	A	507	1PE	OH2-C12-C22-OH3
4	A	507	1PE	OH4-C13-C23-OH3
2	A	501[A]	UPG	PA-O3A-PB-O3B
2	A	501[B]	UPG	PB-O3A-PA-O5C
2	B	501[B]	UPG	PA-O3A-PB-O3B
2	B	501[A]	UPG	PB-O3A-PA-O5C
2	B	501[A]	UPG	C1'-O3B-PB-O3A
4	A	507	1PE	C24-C14-OH5-C25
4	B	506	1PE	C13-C23-OH3-C22
4	A	507	1PE	C23-C13-OH4-C24
4	B	507	1PE	C16-C26-OH6-C15
4	B	507	1PE	C13-C23-OH3-C22
4	B	507	1PE	C23-C13-OH4-C24
2	B	501[B]	UPG	C1'-O3B-PB-O1B
4	B	507	1PE	C15-C25-OH5-C14
4	A	507	1PE	C13-C23-OH3-C22
2	A	501[A]	UPG	C1'-O3B-PB-O3A
2	B	501[A]	UPG	O4C-C4C-C5C-O5C
4	A	506	1PE	OH5-C14-C24-OH4
4	B	506	1PE	C24-C14-OH5-C25
4	B	506	1PE	C15-C25-OH5-C14
4	A	507	1PE	C25-C15-OH6-C26
2	B	501[A]	UPG	PA-O3A-PB-O1B
2	A	501[A]	UPG	O4C-C4C-C5C-O5C
4	B	507	1PE	OH7-C16-C26-OH6
2	B	501[A]	UPG	C3C-C4C-C5C-O5C
4	B	507	1PE	C14-C24-OH4-C13
2	A	501[A]	UPG	C3C-C4C-C5C-O5C
4	B	506	1PE	OH4-C13-C23-OH3
4	B	506	1PE	C25-C15-OH6-C26
4	A	507	1PE	OH6-C15-C25-OH5
4	A	506	1PE	C25-C15-OH6-C26
2	A	501[A]	UPG	PA-O3A-PB-O2B
4	A	506	1PE	OH7-C16-C26-OH6
2	B	501[B]	UPG	C5C-O5C-PA-O1A
4	A	506	1PE	OH2-C12-C22-OH3
4	A	507	1PE	C14-C24-OH4-C13

There are no ring outliers.

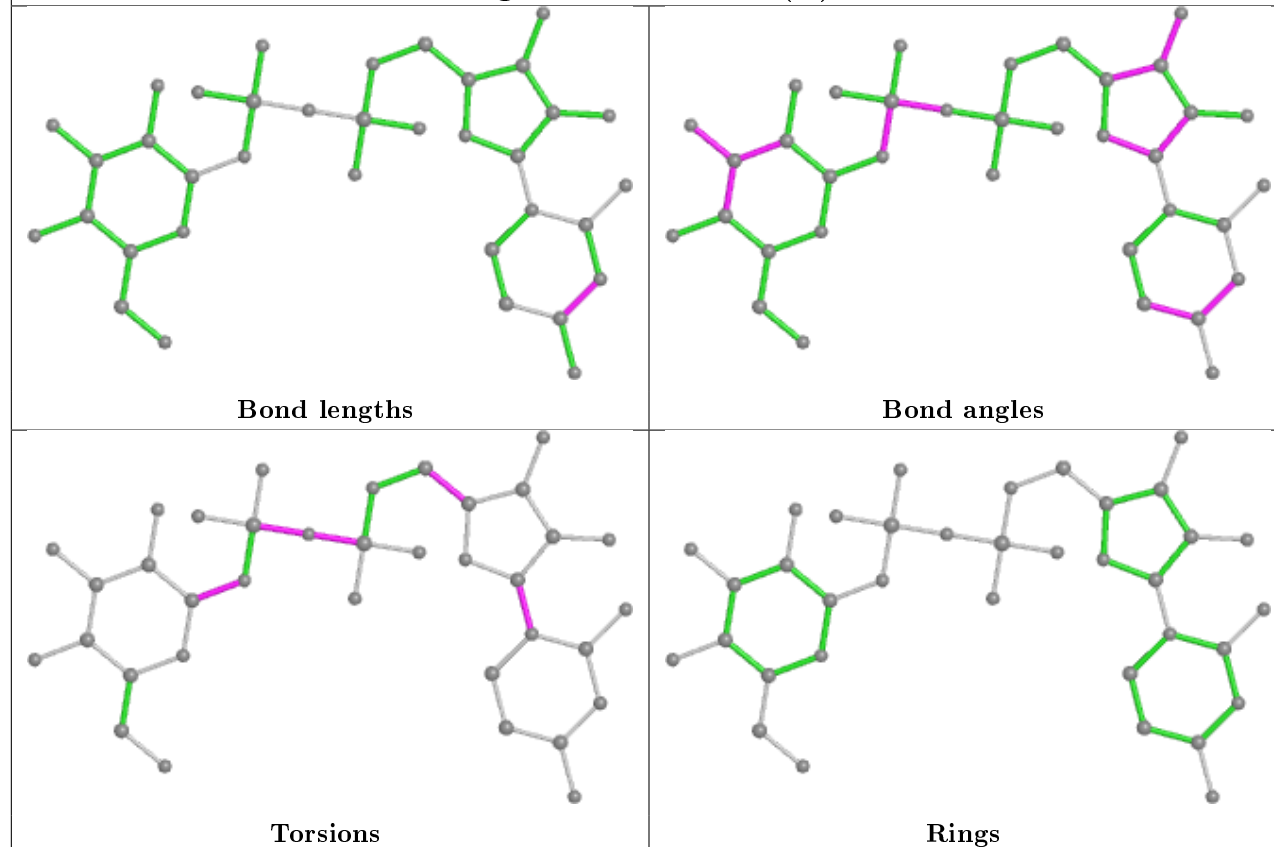
4 monomers are involved in 11 short contacts:

Mol	Chain	Res	Type	Clashes	Symm-Clashes
2	A	501[A]	UPG	1	0
2	A	501[B]	UPG	2	0
2	B	501[B]	UPG	2	0
2	B	501[A]	UPG	6	0

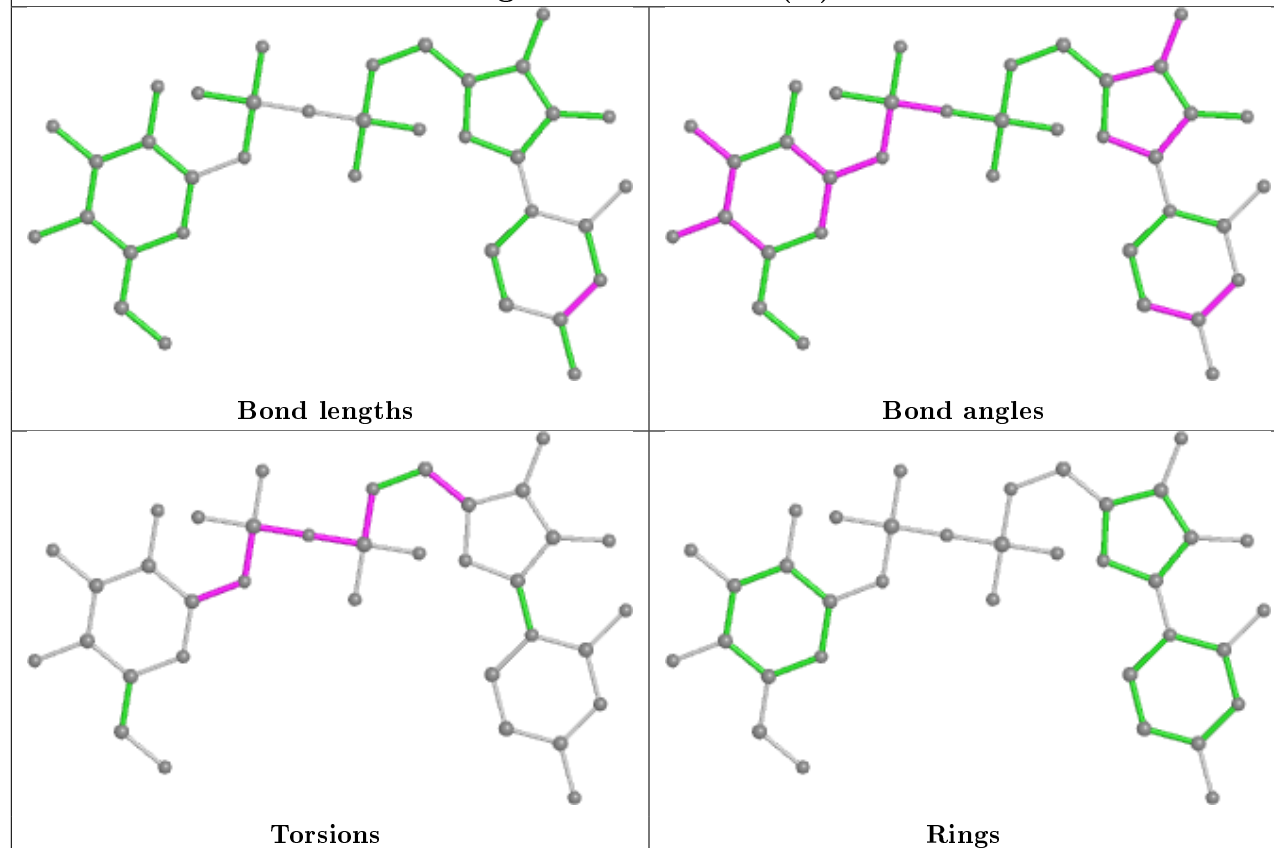
The following is a two-dimensional graphical depiction of Mogul quality analysis of bond lengths, bond angles, torsion angles, and ring geometry for all instances of the Ligand of Interest. In addition, ligands with molecular weight > 250 and outliers as shown on the validation Tables will also be included. For torsion angles, if less than 5% of the Mogul distribution of torsion angles is within 10 degrees of the torsion angle in question, then that torsion angle is considered an outlier. Any bond that is central to one or more torsion angles identified as an outlier by Mogul will be highlighted in the graph. For rings, the root-mean-square deviation (RMSD) between the ring in question and similar rings identified by Mogul is calculated over all ring torsion angles. If the average RMSD is greater than 60 degrees and the minimal RMSD between the ring in question and any Mogul-identified rings is also greater than 60 degrees, then that ring is considered an outlier. The outliers are highlighted in purple. The color gray indicates Mogul did not find sufficient equivalents in the CSD to analyse the geometry.

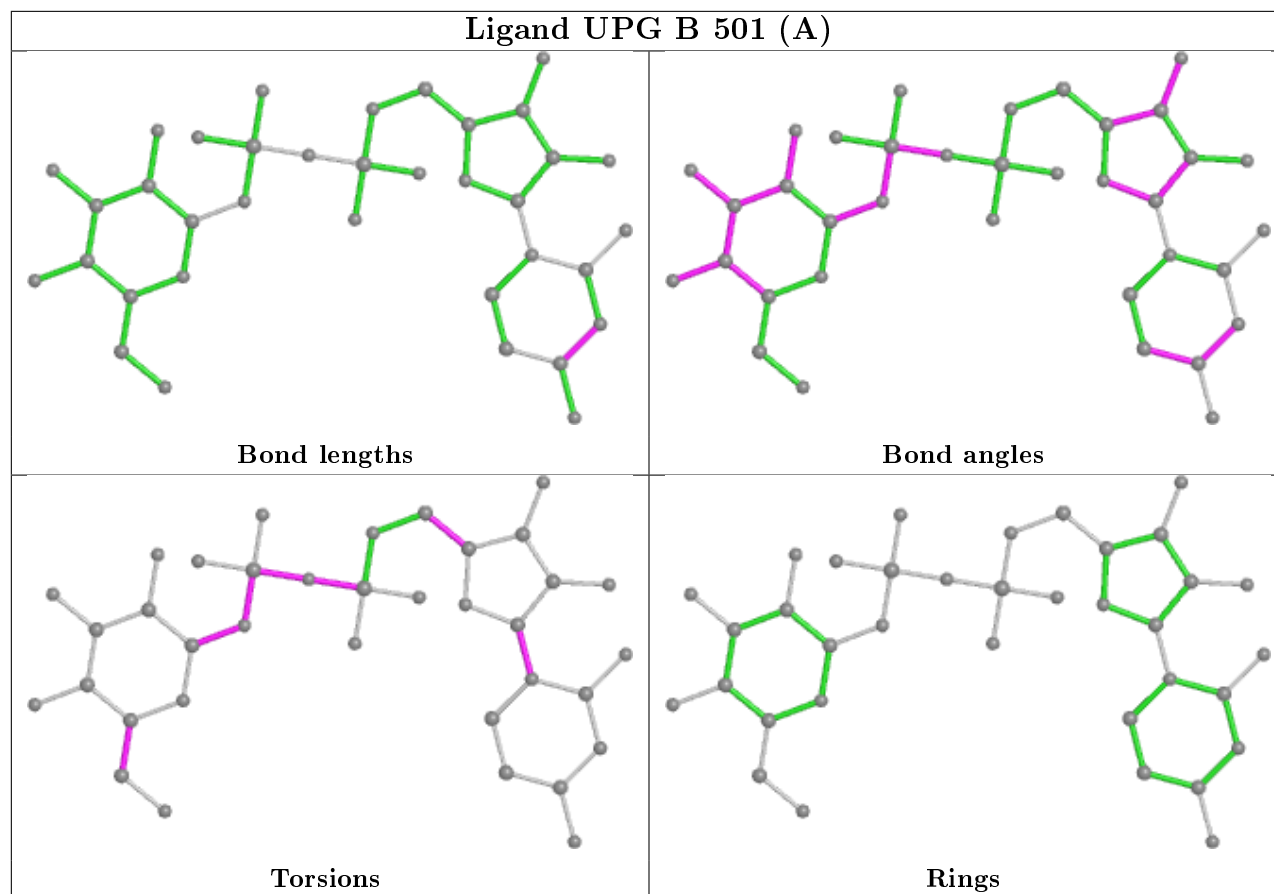


Ligand UPG A 501 (B)



Ligand UPG B 501 (B)





5.7 Other polymers [i](#)

There are no such residues in this entry.

5.8 Polymer linkage issues [i](#)

There are no chain breaks in this entry.

6 Fit of model and data

6.1 Protein, DNA and RNA chains

In the following table, the column labelled ‘#RSRZ> 2’ contains the number (and percentage) of RSRZ outliers, followed by percent RSRZ outliers for the chain as percentile scores relative to all X-ray entries and entries of similar resolution. The OWAB column contains the minimum, median, 95th percentile and maximum values of the occupancy-weighted average B-factor per residue. The column labelled ‘Q< 0.9’ lists the number of (and percentage) of residues with an average occupancy less than 0.9.

Mol	Chain	Analysed	<RSRZ>	#RSRZ>2	OWAB(Å ²)	Q<0.9
1	A	469/478 (98%)	0.16	15 (3%) 47 50	22, 34, 60, 96	0
1	B	464/478 (97%)	0.28	35 (7%) 14 15	22, 34, 77, 102	0
All	All	933/956 (97%)	0.22	50 (5%) 25 29	22, 34, 68, 102	0

All (50) RSRZ outliers are listed below:

Mol	Chain	Res	Type	RSRZ
1	B	33	GLY	7.1
1	A	21	ASP	6.2
1	B	40	GLY	6.0
1	B	19	ARG	4.9
1	B	37	ALA	4.2
1	B	472	PRO	4.0
1	B	43	LYS	3.9
1	B	72	LYS	3.9
1	B	45	THR	3.9
1	B	4	GLY	3.7
1	A	45	THR	3.7
1	B	25	TYR	3.7
1	B	58	PRO	3.6
1	B	30	SER	3.6
1	A	41	LEU	3.5
1	B	71	SER	3.5
1	B	35	VAL	3.5
1	B	44	THR	3.4
1	B	226	ASN	3.3
1	B	18	LYS	3.3
1	B	27	TYR	3.3
1	B	38	LEU	3.3
1	A	43	LYS	3.3
1	A	204	TYR	3.1

Continued on next page...

Continued from previous page...

Mol	Chain	Res	Type	RSRZ
1	A	46	GLU	3.1
1	A	35	VAL	3.0
1	B	49[A]	TRP	2.9
1	B	60	ASP	2.9
1	B	32	GLY	2.9
1	B	73	PHE	2.8
1	B	471	ASN	2.8
1	B	204	TYR	2.7
1	B	64	LYS	2.7
1	A	40	GLY	2.7
1	B	57	ILE	2.6
1	A	225	PRO	2.5
1	B	36	THR	2.5
1	B	26	ASP	2.5
1	B	224	LEU	2.5
1	A	224	LEU	2.4
1	A	22	ASN	2.4
1	A	24	SER	2.3
1	A	256	ASP	2.3
1	B	17	ILE	2.3
1	B	31	SER	2.3
1	A	60	ASP	2.2
1	B	67	ASP	2.2
1	A	20	LEU	2.1
1	B	41	LEU	2.1
1	B	28	SER	2.1

6.2 Non-standard residues in protein, DNA, RNA chains [i](#)

There are no non-standard protein/DNA/RNA residues in this entry.

6.3 Carbohydrates [i](#)

There are no carbohydrates in this entry.

6.4 Ligands [i](#)

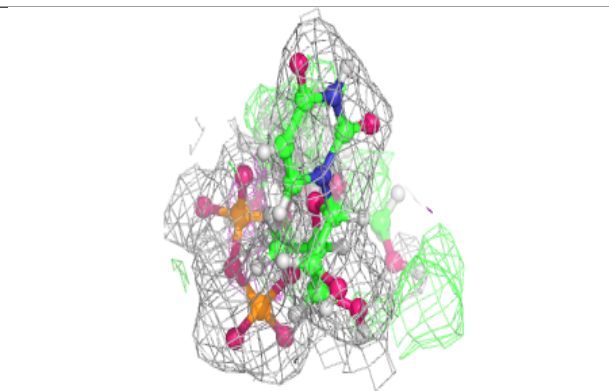
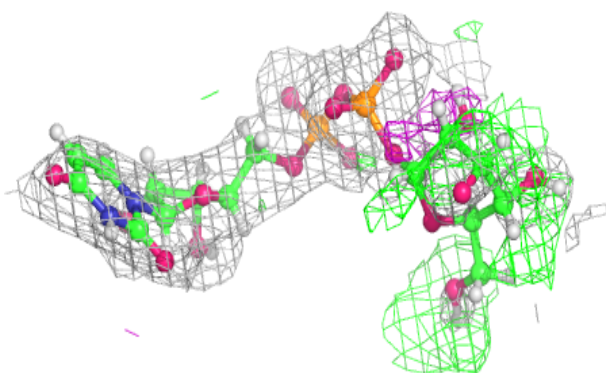
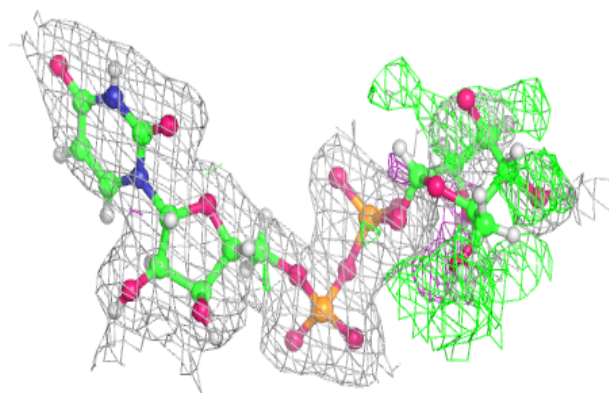
In the following table, the Atoms column lists the number of modelled atoms in the group and the number defined in the chemical component dictionary. The B-factors column lists the minimum, median, 95th percentile and maximum values of B factors of atoms in the group. The column labelled 'Q< 0.9' lists the number of atoms with occupancy less than 0.9.

Mol	Type	Chain	Res	Atoms	RSCC	RSR	B-factors(\AA^2)	Q<0.9
4	1PE	B	507	16/16	0.72	0.24	50,70,94,101	0
4	1PE	A	507	16/16	0.74	0.24	42,64,75,77	0
3	SO4	A	502	5/5	0.77	0.18	41,49,79,83	0
4	1PE	A	506	16/16	0.79	0.16	51,64,75,77	0
4	1PE	B	506	16/16	0.82	0.29	43,64,85,89	0
3	SO4	A	503	5/5	0.91	0.10	43,45,52,72	0
3	SO4	B	502	5/5	0.91	0.09	45,46,72,73	0
3	SO4	B	505	5/5	0.91	0.20	55,72,78,80	0
5	NA	B	508	1/1	0.94	0.15	40,40,40,40	0
3	SO4	A	505	5/5	0.94	0.17	49,77,91,91	0
2	UPG	A	501[B]	36/36	0.95	0.19	20,33,50,54	57
2	UPG	A	501[A]	36/36	0.95	0.19	18,32,43,46	57
2	UPG	B	501[B]	36/36	0.95	0.17	20,33,40,45	57
3	SO4	B	504	5/5	0.95	0.27	46,62,72,72	0
2	UPG	B	501[A]	36/36	0.95	0.17	23,35,53,60	57
3	SO4	A	504	5/5	0.95	0.16	35,50,64,67	0
5	NA	A	508	1/1	0.98	0.24	41,41,41,41	0
3	SO4	B	503	5/5	0.98	0.07	41,47,59,60	0

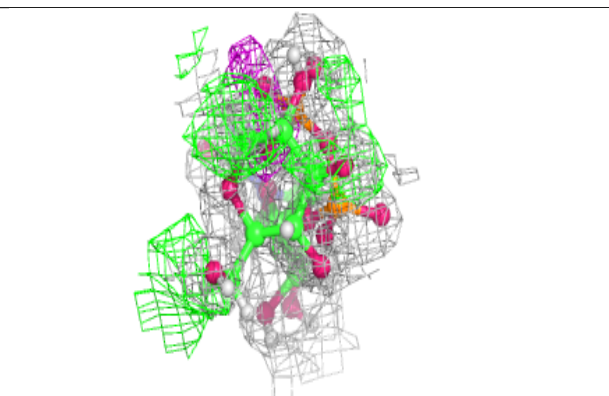
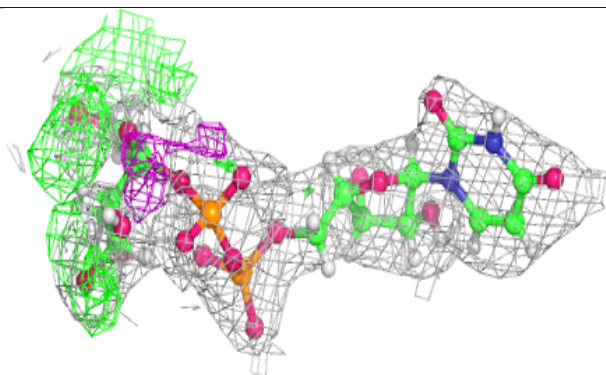
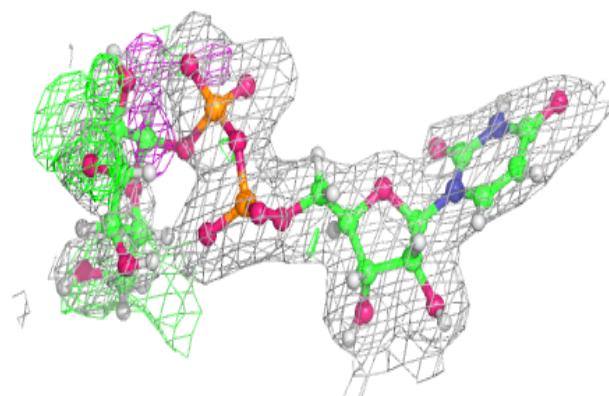
The following is a graphical depiction of the model fit to experimental electron density of all instances of the Ligand of Interest. In addition, ligands with molecular weight > 250 and outliers as shown on the geometry validation Tables will also be included. Each fit is shown from different orientation to approximate a three-dimensional view.

Electron density around UPG A 501 (B):

$2mF_o-DF_c$ (at 0.7 rmsd) in gray
 mF_o-DF_c (at 3 rmsd) in purple (negative)
and green (positive)

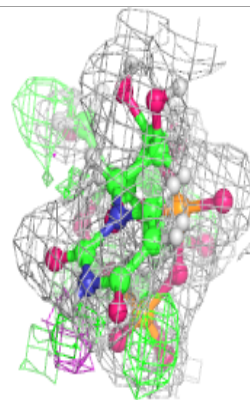
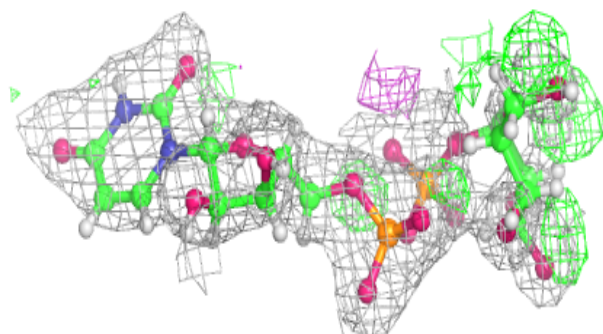
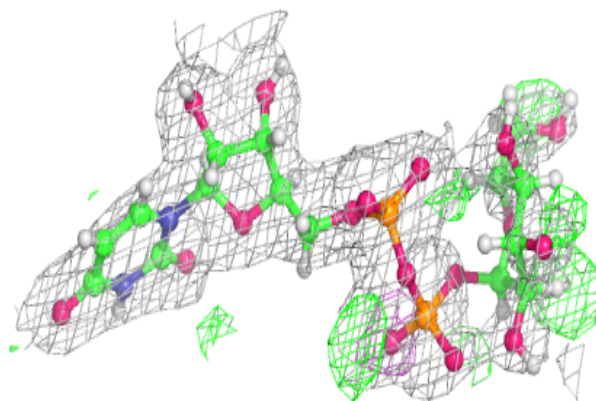
**Electron density around UPG A 501 (A):**

$2mF_o-DF_c$ (at 0.7 rmsd) in gray
 mF_o-DF_c (at 3 rmsd) in purple (negative)
and green (positive)



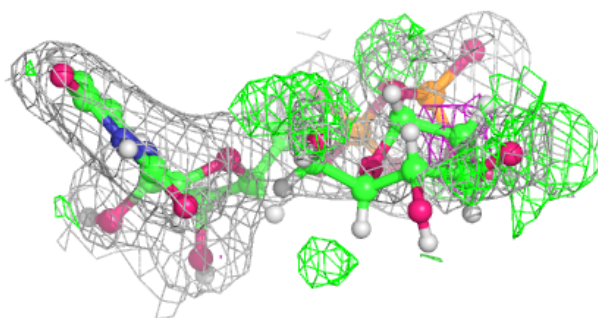
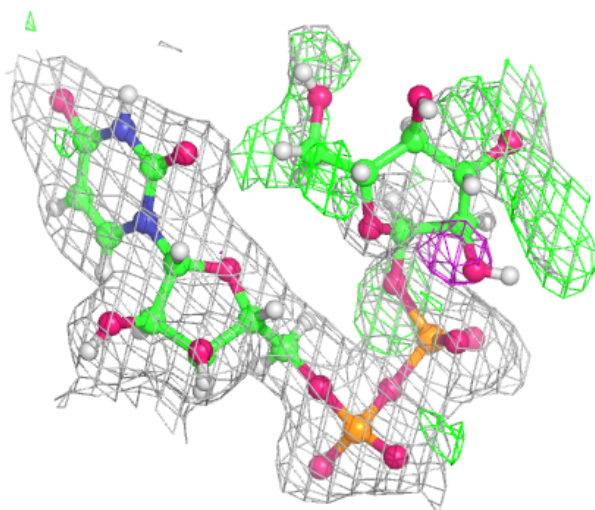
Electron density around UPG B 501 (B):

$2mF_o-DF_c$ (at 0.7 rmsd) in gray
 mF_o-DF_c (at 3 rmsd) in purple (negative)
and green (positive)



Electron density around UPG B 501 (A):

$2mF_o-DF_c$ (at 0.7 rmsd) in gray
 mF_o-DF_c (at 3 rmsd) in purple (negative)
and green (positive)



6.5 Other polymers [i](#)

There are no such residues in this entry.