



Full wwPDB X-ray Structure Validation Report ⓘ

Jun 7, 2020 – 02:55 am BST

PDB ID : 6HUY
Title : HmdII from *Desulfurobacterium thermolithotrophum* reconstituted with Fe-guanylylpyridinol (FeGP) cofactor and co-crystallized with methenyl-tetrahydrofolate form A
Authors : Watanabe, T.; Wagner, T.; Huang, G.; Kahnt, J.; Ataka, K.; Ermler, U.; Shima, S.
Deposited on : 2018-10-09
Resolution : 2.25 Å(reported)

This is a Full wwPDB X-ray Structure Validation Report for a publicly released PDB entry.

We welcome your comments at validation@mail.wwpdb.org

A user guide is available at

<https://www.wwpdb.org/validation/2017/XrayValidationReportHelp>

with specific help available everywhere you see the ⓘ symbol.

The following versions of software and data (see [references ⓘ](#)) were used in the production of this report:

MolProbity	:	4.02b-467
Mogul	:	1.8.5 (274361), CSD as541be (2020)
Xtriage (Phenix)	:	1.13
EDS	:	2.11
buster-report	:	1.1.7 (2018)
Percentile statistics	:	20191225.v01 (using entries in the PDB archive December 25th 2019)
Refmac	:	5.8.0158
CCP4	:	7.0.044 (Gargrove)
Ideal geometry (proteins)	:	Engh & Huber (2001)
Ideal geometry (DNA, RNA)	:	Parkinson et al. (1996)
Validation Pipeline (wwPDB-VP)	:	2.11

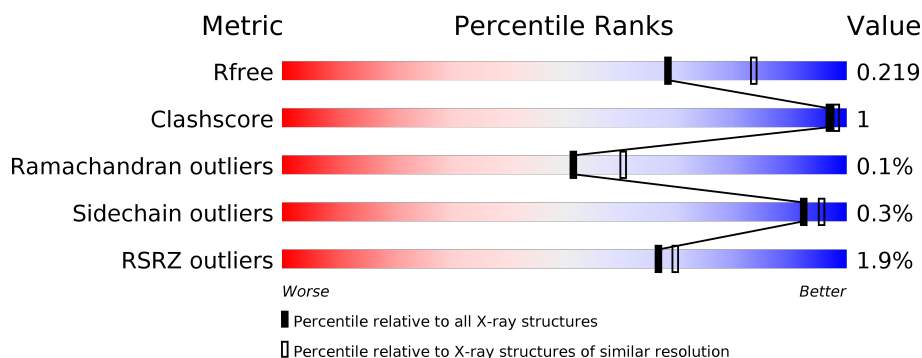
1 Overall quality at a glance

The following experimental techniques were used to determine the structure:

X-RAY DIFFRACTION

The reported resolution of this entry is 2.25 Å.

Percentile scores (ranging between 0-100) for global validation metrics of the entry are shown in the following graphic. The table shows the number of entries on which the scores are based.



Metric	Whole archive (#Entries)	Similar resolution (#Entries, resolution range(Å))
R_{free}	130704	1377 (2.26-2.26)
Clashscore	141614	1487 (2.26-2.26)
Ramachandran outliers	138981	1449 (2.26-2.26)
Sidechain outliers	138945	1450 (2.26-2.26)
RSRZ outliers	127900	1356 (2.26-2.26)

The table below summarises the geometric issues observed across the polymeric chains and their fit to the electron density. The red, orange, yellow and green segments on the lower bar indicate the fraction of residues that contain outliers for ≥ 3 , 2, 1 and 0 types of geometric quality criteria respectively. A grey segment represents the fraction of residues that are not modelled. The numeric value for each fraction is indicated below the corresponding segment, with a dot representing fractions $\leq 5\%$. The upper red bar (where present) indicates the fraction of residues that have poor fit to the electron density. The numeric value is given above the bar.

Mol	Chain	Length	Quality of chain
1	A	370	<div> <div>3%</div> <div>92%</div> <div>5%</div> </div>
1	C	370	<div> <div>3%</div> <div>93%</div> <div>5%</div> </div>
2	B	370	<div> <div>%</div> <div>94%</div> <div>• •</div> </div>
2	D	370	<div> <div>%</div> <div>95%</div> <div>• •</div> </div>

The following table lists non-polymeric compounds, carbohydrate monomers and non-standard residues in protein, DNA, RNA chains that are outliers for geometric or electron-density-fit crite-

ria:

Mol	Type	Chain	Res	Chirality	Geometry	Clashes	Electron density
4	GOL	D	401	-	-	-	X
7	PG4	B	405	-	-	-	X

2 Entry composition

There are 8 unique types of molecules in this entry. The entry contains 11842 atoms, of which 0 are hydrogens and 0 are deuteriums.

In the tables below, the ZeroOcc column contains the number of atoms modelled with zero occupancy, the AltConf column contains the number of residues with at least one atom in alternate conformation and the Trace column contains the number of residues modelled with at most 2 atoms.

- Molecule 1 is a protein called Coenzyme F420-dependent N(5),N(10)-methenyltetrahydromethanopterin reductase-related protein.

Mol	Chain	Residues	Atoms					ZeroOcc	AltConf	Trace
1	A	350	Total	C	N	O	S	0	0	0
			2710	1737	433	528	12			
1	C	351	Total	C	N	O	S	0	0	0
			2717	1742	434	529	12			

There are 26 discrepancies between the modelled and reference sequences:

Chain	Residue	Modelled	Actual	Comment	Reference
A	358	LYS	-	expression tag	UNP F0S2B6
A	359	LEU	-	expression tag	UNP F0S2B6
A	360	ALA	-	expression tag	UNP F0S2B6
A	361	ALA	-	expression tag	UNP F0S2B6
A	362	ALA	-	expression tag	UNP F0S2B6
A	363	LEU	-	expression tag	UNP F0S2B6
A	364	GLU	-	expression tag	UNP F0S2B6
A	365	HIS	-	expression tag	UNP F0S2B6
A	366	HIS	-	expression tag	UNP F0S2B6
A	367	HIS	-	expression tag	UNP F0S2B6
A	368	HIS	-	expression tag	UNP F0S2B6
A	369	HIS	-	expression tag	UNP F0S2B6
A	370	HIS	-	expression tag	UNP F0S2B6
C	358	LYS	-	expression tag	UNP F0S2B6
C	359	LEU	-	expression tag	UNP F0S2B6
C	360	ALA	-	expression tag	UNP F0S2B6
C	361	ALA	-	expression tag	UNP F0S2B6
C	362	ALA	-	expression tag	UNP F0S2B6
C	363	LEU	-	expression tag	UNP F0S2B6
C	364	GLU	-	expression tag	UNP F0S2B6
C	365	HIS	-	expression tag	UNP F0S2B6
C	366	HIS	-	expression tag	UNP F0S2B6
C	367	HIS	-	expression tag	UNP F0S2B6
C	368	HIS	-	expression tag	UNP F0S2B6

Continued on next page...

Continued from previous page...

Chain	Residue	Modelled	Actual	Comment	Reference
C	369	HIS	-	expression tag	UNP F0S2B6
C	370	HIS	-	expression tag	UNP F0S2B6

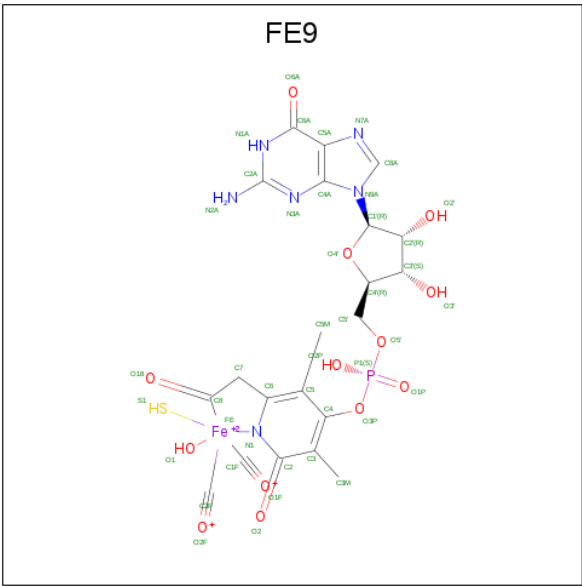
- Molecule 2 is a protein called Coenzyme F420-dependent N(5),N(10)-methenyltetrahydromethanopterin reductase-related protein.

Mol	Chain	Residues	Atoms					ZeroOcc	AltConf	Trace
2	B	357	Total	C	N	O	S	0	1	0
			2776	1775	445	544	12			
2	D	355	Total	C	N	O	S	0	1	0
			2760	1765	445	538	12			

There are 26 discrepancies between the modelled and reference sequences:

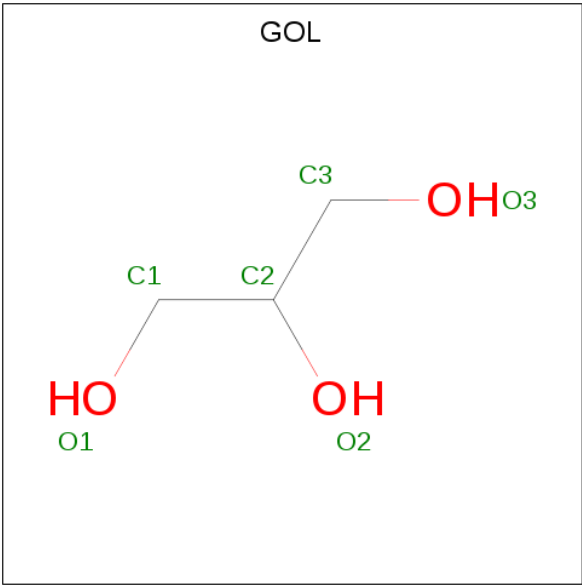
Chain	Residue	Modelled	Actual	Comment	Reference
B	358	LYS	-	expression tag	UNP F0S2B6
B	359	LEU	-	expression tag	UNP F0S2B6
B	360	ALA	-	expression tag	UNP F0S2B6
B	361	ALA	-	expression tag	UNP F0S2B6
B	362	ALA	-	expression tag	UNP F0S2B6
B	363	LEU	-	expression tag	UNP F0S2B6
B	364	GLU	-	expression tag	UNP F0S2B6
B	365	HIS	-	expression tag	UNP F0S2B6
B	366	HIS	-	expression tag	UNP F0S2B6
B	367	HIS	-	expression tag	UNP F0S2B6
B	368	HIS	-	expression tag	UNP F0S2B6
B	369	HIS	-	expression tag	UNP F0S2B6
B	370	HIS	-	expression tag	UNP F0S2B6
D	358	LYS	-	expression tag	UNP F0S2B6
D	359	LEU	-	expression tag	UNP F0S2B6
D	360	ALA	-	expression tag	UNP F0S2B6
D	361	ALA	-	expression tag	UNP F0S2B6
D	362	ALA	-	expression tag	UNP F0S2B6
D	363	LEU	-	expression tag	UNP F0S2B6
D	364	GLU	-	expression tag	UNP F0S2B6
D	365	HIS	-	expression tag	UNP F0S2B6
D	366	HIS	-	expression tag	UNP F0S2B6
D	367	HIS	-	expression tag	UNP F0S2B6
D	368	HIS	-	expression tag	UNP F0S2B6
D	369	HIS	-	expression tag	UNP F0S2B6
D	370	HIS	-	expression tag	UNP F0S2B6

- Molecule 3 is iron-guanylyl pyridinol cofactor (three-letter code: FE9) (formula: C₂₁H₂₃FeN₆O₁₃PS).



Mol	Chain	Residues	Atoms						ZeroOcc	AltConf
			Total	C	Fe	N	O	P		
3	A	1	41	21	1	6	12	1	0	0
3	C	1	41	21	1	6	12	1	0	0

- Molecule 4 is GLYCEROL (three-letter code: GOL) (formula: C₃H₈O₃).



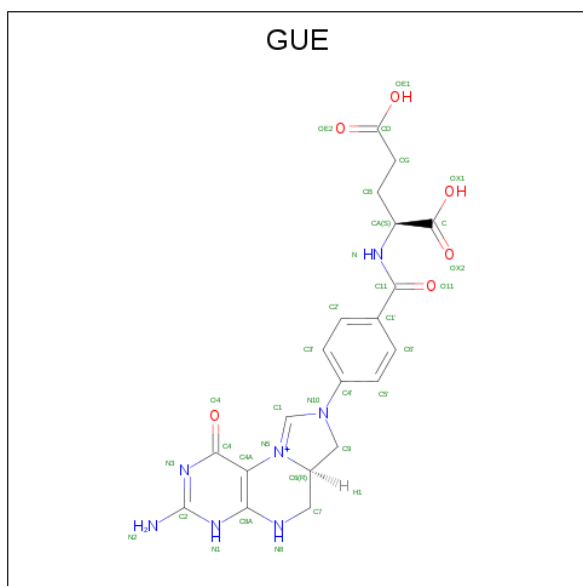
Mol	Chain	Residues	Atoms			ZeroOcc	AltConf
			Total	C	O		
4	A	1	6	3	3	0	0

Continued on next page...

Continued from previous page...

Mol	Chain	Residues	Atoms			ZeroOcc	AltConf
4	D	1	Total	C	O	0	0
			6	3	3		

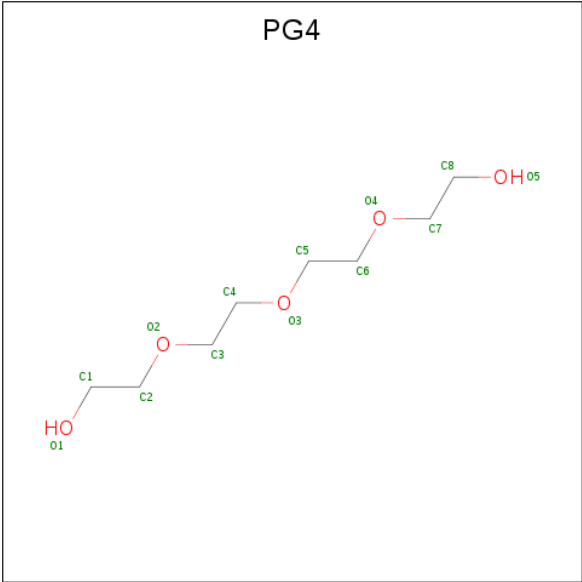
- Molecule 5 is 5,10-Methenyltetrahydrofolate (three-letter code: GUE) (formula: $C_{20}H_{22}N_7O_6$).





Mol	Chain	Residues	Atoms				ZeroOcc	AltConf
6	B	1	Total	C	O	S	0	0
			4	2	1	1		
6	B	1	Total	C	O	S	0	0
			4	2	1	1		
6	B	1	Total	C	O	S	0	0
			4	2	1	1		
6	B	1	Total	C	O	S	0	0
			4	2	1	1		
6	C	1	Total	C	O	S	0	0
			4	2	1	1		
6	C	1	Total	C	O	S	0	0
			4	2	1	1		
6	D	1	Total	C	O	S	0	0
			4	2	1	1		
6	D	1	Total	C	O	S	0	0
			4	2	1	1		

- Molecule 7 is TETRAETHYLENE GLYCOL (three-letter code: PG4) (formula: C₈H₁₈O₅).



Mol	Chain	Residues	Atoms			ZeroOcc	AltConf
7	B	1	Total	C	O	0	0
			8	5	3		

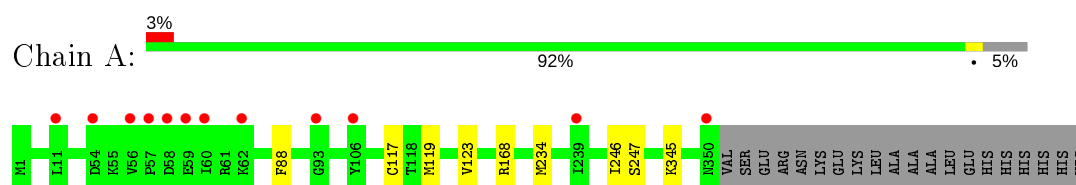
- Molecule 8 is water.

Mol	Chain	Residues	Atoms		ZeroOcc	AltConf
8	A	140	Total	O	0	0
			140	140		
8	B	166	Total	O	0	0
			166	166		
8	C	165	Total	O	0	0
			165	165		
8	D	138	Total	O	0	0
			138	138		

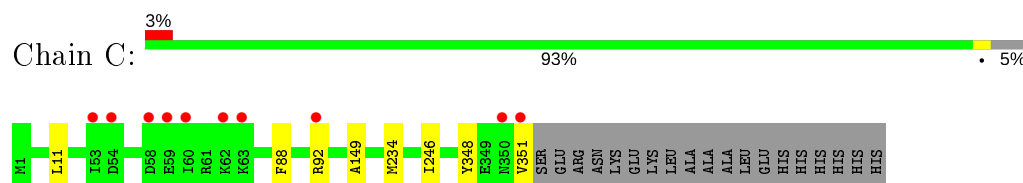
3 Residue-property plots [i](#)

These plots are drawn for all protein, RNA and DNA chains in the entry. The first graphic for a chain summarises the proportions of the various outlier classes displayed in the second graphic. The second graphic shows the sequence view annotated by issues in geometry and electron density. Residues are color-coded according to the number of geometric quality criteria for which they contain at least one outlier: green = 0, yellow = 1, orange = 2 and red = 3 or more. A red dot above a residue indicates a poor fit to the electron density ($RSRZ > 2$). Stretches of 2 or more consecutive residues without any outlier are shown as a green connector. Residues present in the sample, but not in the model, are shown in grey.

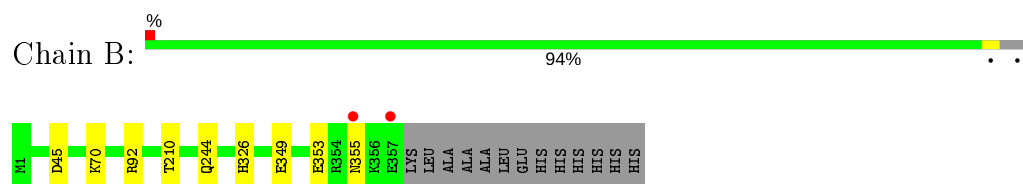
- Molecule 1: Coenzyme F420-dependent N(5),N(10)-methenyltetrahydromethanopterin reductase-related protein



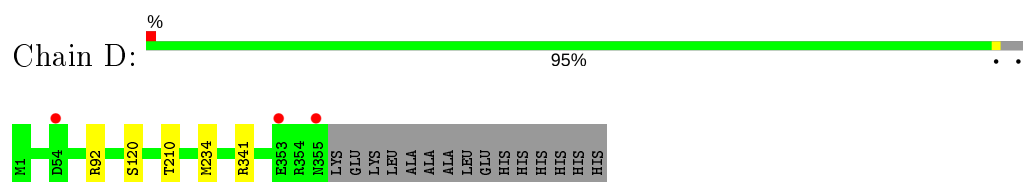
- Molecule 1: Coenzyme F420-dependent N(5),N(10)-methenyltetrahydromethanopterin reductase-related protein



- Molecule 2: Coenzyme F420-dependent N(5),N(10)-methenyltetrahydromethanopterin reductase-related protein



- Molecule 2: Coenzyme F420-dependent N(5),N(10)-methenyltetrahydromethanopterin reductase-related protein



4 Data and refinement statistics

Property	Value	Source
Space group	P 21 21 21	Depositor
Cell constants a, b, c, α , β , γ	99.77Å 131.83Å 168.26Å 90.00° 90.00° 90.00°	Depositor
Resolution (Å)	24.98 – 2.25 47.83 – 2.25	Depositor EDS
% Data completeness (in resolution range)	99.8 (24.98-2.25) 99.8 (47.83-2.25)	Depositor EDS
R_{merge}	0.10	Depositor
R_{sym}	(Not available)	Depositor
$\langle I/\sigma(I) \rangle$ ¹	2.20 (at 2.24Å)	Xtriage
Refinement program	PHENIX (1.10.1 _2155: ???)	Depositor
R, R_{free}	0.187 , 0.212 0.196 , 0.219	Depositor DCC
R_{free} test set	5121 reflections (4.85%)	wwPDB-VP
Wilson B-factor (Å ²)	42.3	Xtriage
Anisotropy	0.355	Xtriage
Bulk solvent k_{sol} (e/Å ³), B_{sol} (Å ²)	0.32 , 39.0	EDS
L-test for twinning ²	$\langle L \rangle = 0.53$, $\langle L^2 \rangle = 0.37$	Xtriage
Estimated twinning fraction	No twinning to report.	Xtriage
F_o, F_c correlation	0.97	EDS
Total number of atoms	11842	wwPDB-VP
Average B, all atoms (Å ²)	55.0	wwPDB-VP

Xtriage's analysis on translational NCS is as follows: *The analyses of the Patterson function reveals a significant off-origin peak that is 52.56 % of the origin peak, indicating pseudo-translational symmetry. The chance of finding a peak of this or larger height randomly in a structure without pseudo-translational symmetry is equal to 4.7779e-05. The detected translational NCS is most likely also responsible for the elevated intensity ratio.*

¹ Intensities estimated from amplitudes.

² Theoretical values of $\langle |L| \rangle$, $\langle L^2 \rangle$ for acentric reflections are 0.5, 0.333 respectively for untwinned datasets, and 0.375, 0.2 for perfectly twinned datasets.

5 Model quality [i](#)

5.1 Standard geometry [i](#)

Bond lengths and bond angles in the following residue types are not validated in this section: GOL, CSO, GUE, PG4, DMS, FE9

The Z score for a bond length (or angle) is the number of standard deviations the observed value is removed from the expected value. A bond length (or angle) with $|Z| > 5$ is considered an outlier worth inspection. RMSZ is the root-mean-square of all Z scores of the bond lengths (or angles).

Mol	Chain	Bond lengths		Bond angles	
		RMSZ	$\# Z > 5$	RMSZ	$\# Z > 5$
1	A	0.36	0/2759	0.51	0/3741
1	C	0.36	0/2766	0.51	0/3751
2	B	0.36	0/2820	0.49	0/3820
2	D	0.37	0/2804	0.48	0/3799
All	All	0.36	0/11149	0.50	0/15111

There are no bond length outliers.

There are no bond angle outliers.

There are no chirality outliers.

There are no planarity outliers.

5.2 Too-close contacts [i](#)

In the following table, the Non-H and H(model) columns list the number of non-hydrogen atoms and hydrogen atoms in the chain respectively. The H(added) column lists the number of hydrogen atoms added and optimized by MolProbity. The Clashes column lists the number of clashes within the asymmetric unit, whereas Symm-Clashes lists symmetry related clashes.

Mol	Chain	Non-H	H(model)	H(added)	Clashes	Symm-Clashes
1	A	2710	0	2770	9	0
1	C	2717	0	2778	7	0
2	B	2776	0	2834	5	0
2	D	2760	0	2822	3	0
3	A	41	0	20	2	0
3	C	41	0	20	1	0
4	A	6	0	8	0	0
4	D	6	0	8	0	0
5	A	33	0	0	0	0

Continued on next page...

Continued from previous page...

Mol	Chain	Non-H	H(model)	H(added)	Clashes	Symm-Clashes
5	B	33	0	0	0	0
5	C	33	0	0	0	0
5	D	33	0	0	0	0
6	B	16	0	24	0	0
6	C	8	0	12	0	0
6	D	12	0	18	0	0
7	B	8	0	9	0	0
8	A	140	0	0	1	0
8	B	166	0	0	2	0
8	C	165	0	0	1	0
8	D	138	0	0	2	0
All	All	11842	0	11323	20	0

The all-atom clashscore is defined as the number of clashes found per 1000 atoms (including hydrogen atoms). The all-atom clashscore for this structure is 1.

All (20) close contacts within the same asymmetric unit are listed below, sorted by their clash magnitude.

Atom-1	Atom-2	Interatomic distance (Å)	Clash overlap (Å)
1:C:92:ARG:NH1	2:D:234:MET:SD	2.57	0.77
2:B:326:HIS:ND1	8:B:501:HOH:O	2.22	0.72
1:C:92:ARG:HG2	1:C:348:TYR:O	2.01	0.60
2:B:45:ASP:OD1	2:B:70:LYS:NZ	2.25	0.60
1:A:88:PHE:CD1	3:A:401:FE9:H11	2.38	0.58
1:A:234:MET:HE1	8:B:514:HOH:O	2.04	0.57
2:D:341[A]:ARG:NH1	8:D:501:HOH:O	2.34	0.57
1:A:117:CYS:SG	3:A:401:FE9:C8	2.94	0.56
1:A:119:MET:HA	1:A:119:MET:HE3	1.89	0.55
1:C:88:PHE:CD2	3:C:401:FE9:H11	2.44	0.53
1:A:119:MET:HE2	1:A:123:VAL:HB	1.97	0.47
1:A:246:ILE:HD11	2:B:210:THR:HG23	1.98	0.45
1:A:247:SER:OG	2:B:244:GLN:HB2	2.17	0.44
1:C:246:ILE:HD11	2:D:210:THR:HG23	1.99	0.44
1:A:119:MET:HE1	1:A:123:VAL:HG11	2.00	0.43
1:C:11:LEU:N	8:C:510:HOH:O	2.51	0.43
1:C:234:MET:HE1	8:D:541:HOH:O	2.18	0.43
1:C:351:VAL:HG12	1:C:351:VAL:O	2.17	0.43
2:B:349:GLU:O	2:B:353:GLU:HG2	2.20	0.41
1:A:345:LYS:HB2	8:A:598:HOH:O	2.21	0.41

There are no symmetry-related clashes.

5.3 Torsion angles [i](#)

5.3.1 Protein backbone [i](#)

In the following table, the Percentiles column shows the percent Ramachandran outliers of the chain as a percentile score with respect to all X-ray entries followed by that with respect to entries of similar resolution.

The Analysed column shows the number of residues for which the backbone conformation was analysed, and the total number of residues.

Mol	Chain	Analysed	Favoured	Allowed	Outliers	Percentiles	
1	A	348/370 (94%)	336 (97%)	12 (3%)	0	100	100
1	C	349/370 (94%)	338 (97%)	10 (3%)	1 (0%)	41	46
2	B	355/370 (96%)	343 (97%)	11 (3%)	1 (0%)	41	46
2	D	353/370 (95%)	344 (98%)	9 (2%)	0	100	100
All	All	1405/1480 (95%)	1361 (97%)	42 (3%)	2 (0%)	51	60

All (2) Ramachandran outliers are listed below:

Mol	Chain	Res	Type
2	B	355	ASN
1	C	149	ALA

5.3.2 Protein sidechains [i](#)

In the following table, the Percentiles column shows the percent sidechain outliers of the chain as a percentile score with respect to all X-ray entries followed by that with respect to entries of similar resolution.

The Analysed column shows the number of residues for which the sidechain conformation was analysed, and the total number of residues.

Mol	Chain	Analysed	Rotameric	Outliers	Percentiles	
1	A	301/318 (95%)	300 (100%)	1 (0%)	92	95
1	C	302/318 (95%)	302 (100%)	0	100	100
2	B	308/317 (97%)	307 (100%)	1 (0%)	92	95
2	D	306/317 (96%)	304 (99%)	2 (1%)	84	90
All	All	1217/1270 (96%)	1213 (100%)	4 (0%)	92	95

All (4) residues with a non-rotameric sidechain are listed below:

Mol	Chain	Res	Type
1	A	168	ARG
2	B	92	ARG
2	D	92	ARG
2	D	120	SER

Some sidechains can be flipped to improve hydrogen bonding and reduce clashes. There are no such sidechains identified.

5.3.3 RNA ⓘ

There are no RNA molecules in this entry.

5.4 Non-standard residues in protein, DNA, RNA chains ⓘ

2 non-standard protein/DNA/RNA residues are modelled in this entry.

In the following table, the Counts columns list the number of bonds (or angles) for which Mogul statistics could be retrieved, the number of bonds (or angles) that are observed in the model and the number of bonds (or angles) that are defined in the Chemical Component Dictionary. The Link column lists molecule types, if any, to which the group is linked. The Z score for a bond length (or angle) is the number of standard deviations the observed value is removed from the expected value. A bond length (or angle) with $|Z| > 2$ is considered an outlier worth inspection. RMSZ is the root-mean-square of all Z scores of the bond lengths (or angles).

Mol	Type	Chain	Res	Link	Bond lengths			Bond angles		
					Counts	RMSZ	$\# Z > 2$	Counts	RMSZ	$\# Z > 2$
2	CSO	B	117	2	3,6,7	0.75	0	0,6,8	0.00	-
2	CSO	D	117	2	3,6,7	0.86	0	0,6,8	0.00	-

In the following table, the Chirals column lists the number of chiral outliers, the number of chiral centers analysed, the number of these observed in the model and the number defined in the Chemical Component Dictionary. Similar counts are reported in the Torsion and Rings columns. '-' means no outliers of that kind were identified.

Mol	Type	Chain	Res	Link	Chirals	Torsions	Rings
2	CSO	B	117	2	-	0/1/5/7	-
2	CSO	D	117	2	-	0/1/5/7	-

There are no bond length outliers.

There are no bond angle outliers.

There are no chirality outliers.

There are no torsion outliers.

There are no ring outliers.

No monomer is involved in short contacts.

5.5 Carbohydrates [i](#)

There are no carbohydrates in this entry.

5.6 Ligand geometry [i](#)

18 ligands are modelled in this entry.

In the following table, the Counts columns list the number of bonds (or angles) for which Mogul statistics could be retrieved, the number of bonds (or angles) that are observed in the model and the number of bonds (or angles) that are defined in the Chemical Component Dictionary. The Link column lists molecule types, if any, to which the group is linked. The Z score for a bond length (or angle) is the number of standard deviations the observed value is removed from the expected value. A bond length (or angle) with $|Z| > 2$ is considered an outlier worth inspection. RMSZ is the root-mean-square of all Z scores of the bond lengths (or angles).

Mol	Type	Chain	Res	Link	Bond lengths			Bond angles		
					Counts	RMSZ	$\# Z > 2$	Counts	RMSZ	$\# Z > 2$
3	FE9	A	401	-	37,45,47	2.52	12 (32%)	42,71,80	2.34	12 (28%)
3	FE9	C	401	1	37,45,47	2.48	12 (32%)	42,71,80	2.49	15 (35%)
5	GUE	B	406	-	26,36,36	1.21	3 (11%)	31,52,52	1.92	7 (22%)
6	DMS	D	404	-	3,3,3	0.51	0	3,3,3	0.63	0
6	DMS	B	403	-	3,3,3	0.51	0	3,3,3	0.60	0
6	DMS	C	402	-	3,3,3	0.45	0	3,3,3	0.70	0
5	GUE	C	404	-	26,36,36	1.30	3 (11%)	31,52,52	2.08	6 (19%)
6	DMS	D	403	-	3,3,3	0.46	0	3,3,3	0.66	0
6	DMS	C	403	-	3,3,3	0.48	0	3,3,3	0.72	0
5	GUE	A	403	-	26,36,36	1.36	3 (11%)	31,52,52	2.07	8 (25%)
5	GUE	D	405	-	26,36,36	1.30	3 (11%)	31,52,52	2.18	7 (22%)
6	DMS	D	402	-	3,3,3	0.48	0	3,3,3	0.62	0
6	DMS	B	402	-	3,3,3	0.49	0	3,3,3	0.56	0
6	DMS	B	401	-	3,3,3	0.49	0	3,3,3	0.57	0
6	DMS	B	404	-	3,3,3	0.51	0	3,3,3	0.66	0
4	GOL	D	401	-	5,5,5	0.29	0	5,5,5	0.36	0
4	GOL	A	402	-	5,5,5	0.49	0	5,5,5	0.40	0
7	PG4	B	405	-	7,7,12	0.62	0	6,6,11	0.12	0

In the following table, the Chirals column lists the number of chiral outliers, the number of chiral centers analysed, the number of these observed in the model and the number defined in the

Chemical Component Dictionary. Similar counts are reported in the Torsion and Rings columns.
'-' means no outliers of that kind were identified.

Mol	Type	Chain	Res	Link	Chirals	Torsions	Rings
3	FE9	A	401	-	-	1/11/53/65	0/5/5/5
3	FE9	C	401	1	-	1/11/53/65	0/5/5/5
5	GUE	B	406	-	-	2/15/42/42	0/4/4/4
7	PG4	B	405	-	-	4/5/5/10	-
5	GUE	C	404	-	-	1/15/42/42	0/4/4/4
5	GUE	A	403	-	-	0/15/42/42	0/4/4/4
5	GUE	D	405	-	-	1/15/42/42	0/4/4/4
4	GOL	D	401	-	-	0/4/4/4	-
4	GOL	A	402	-	-	2/4/4/4	-

All (36) bond length outliers are listed below:

Mol	Chain	Res	Type	Atoms	Z	Observed(Å)	Ideal(Å)
3	A	401	FE9	C6-C5	7.78	1.49	1.39
3	C	401	FE9	C6-C5	7.00	1.48	1.39
3	A	401	FE9	C2-N1	5.63	1.41	1.34
3	C	401	FE9	C4-C3	5.32	1.48	1.39
3	C	401	FE9	C2-N1	5.25	1.40	1.34
3	A	401	FE9	C4-C5	5.05	1.48	1.39
3	A	401	FE9	C4-C3	4.98	1.48	1.39
3	C	401	FE9	C4-C5	4.85	1.48	1.39
3	A	401	FE9	C6A-C5A	4.53	1.49	1.41
3	C	401	FE9	C6A-C5A	4.17	1.48	1.41
5	A	403	GUE	C1-N5	-4.12	1.26	1.32
5	C	404	GUE	C1-N5	-4.09	1.26	1.32
5	D	405	GUE	C1-N5	-3.85	1.26	1.32
3	C	401	FE9	C2-C3	3.81	1.49	1.41
5	A	403	GUE	C1-N10	-3.69	1.27	1.34
5	D	405	GUE	C1-N10	-3.62	1.27	1.34
3	C	401	FE9	O1F-C1F	-3.56	1.10	1.16
5	B	406	GUE	C1-N5	-3.56	1.27	1.32
5	B	406	GUE	C1-N10	-3.55	1.27	1.34
5	C	404	GUE	C1-N10	-3.51	1.27	1.34
3	A	401	FE9	C7-C6	3.42	1.52	1.49
3	C	401	FE9	C2F-FE	3.39	1.83	1.75
3	C	401	FE9	C1F-FE	3.34	1.82	1.75
5	A	403	GUE	C9-N10	-3.32	1.45	1.48
3	A	401	FE9	C2-C3	3.17	1.48	1.41
3	A	401	FE9	C1F-FE	2.93	1.81	1.75
5	D	405	GUE	C9-N10	-2.92	1.46	1.48

Continued on next page...

Continued from previous page...

Mol	Chain	Res	Type	Atoms	Z	Observed(Å)	Ideal(Å)
3	A	401	FE9	O1F-C1F	-2.90	1.12	1.16
3	A	401	FE9	C2F-FE	2.87	1.81	1.75
5	C	404	GUE	C9-N10	-2.60	1.46	1.48
3	C	401	FE9	C7-C6	2.53	1.51	1.49
3	A	401	FE9	C5A-C4A	2.50	1.47	1.40
3	C	401	FE9	C5A-C4A	2.31	1.47	1.40
3	A	401	FE9	O3P-C4	-2.18	1.37	1.40
5	B	406	GUE	C9-N10	-2.07	1.46	1.48
3	C	401	FE9	O3P-C4	-2.01	1.37	1.40

All (55) bond angle outliers are listed below:

Mol	Chain	Res	Type	Atoms	Z	Observed(°)	Ideal(°)
3	C	401	FE9	C6-C7-C8	-8.77	103.79	111.69
3	A	401	FE9	C6-C7-C8	-7.30	105.11	111.69
5	D	405	GUE	C6-C9-N10	-7.21	99.00	102.82
5	B	406	GUE	C6-C9-N10	-5.97	99.66	102.82
5	C	404	GUE	C6-C9-N10	-5.96	99.67	102.82
5	A	403	GUE	C6-C9-N10	-5.65	99.83	102.82
3	A	401	FE9	C2-N1-C6	5.12	123.05	117.99
3	C	401	FE9	C2A-N3A-C4A	5.02	121.09	115.36
5	C	404	GUE	C4-C4A-C8A	4.71	117.61	114.53
3	C	401	FE9	C6A-C5A-C4A	-4.61	116.40	120.80
3	A	401	FE9	C2A-N3A-C4A	4.55	120.56	115.36
5	D	405	GUE	C4-N3-C2	4.49	123.07	115.93
5	A	403	GUE	C4-N3-C2	4.49	123.07	115.93
5	C	404	GUE	C4A-C4-N3	-4.48	117.31	123.43
3	A	401	FE9	C5A-C6A-N1A	-4.30	117.54	123.43
5	C	404	GUE	C4-N3-C2	4.20	122.61	115.93
3	A	401	FE9	C6A-N1A-C2A	4.07	122.39	115.93
5	A	403	GUE	C4A-C4-N3	-4.02	117.94	123.43
3	A	401	FE9	C7-C6-N1	3.96	118.73	114.35
3	C	401	FE9	C7-C6-N1	3.95	118.73	114.35
3	C	401	FE9	C6A-N1A-C2A	3.92	122.16	115.93
3	C	401	FE9	C2-N1-C6	3.90	121.83	117.99
3	A	401	FE9	C6A-C5A-C4A	-3.85	117.12	120.80
5	D	405	GUE	C4A-C4-N3	-3.78	118.26	123.43
3	C	401	FE9	N3A-C2A-N1A	-3.78	122.18	127.22
5	B	406	GUE	C4-N3-C2	3.75	121.89	115.93
5	B	406	GUE	CB-CG-CD	-3.71	105.61	113.59
3	C	401	FE9	C5A-C6A-N1A	-3.55	118.57	123.43
3	A	401	FE9	C5-C6-N1	-3.43	120.12	122.57

Continued on next page...

Continued from previous page...

Mol	Chain	Res	Type	Atoms	Z	Observed(°)	Ideal(°)
5	A	403	GUE	C4-C4A-C8A	3.43	116.77	114.53
5	B	406	GUE	C2-N1-C8A	3.41	122.19	114.54
5	A	403	GUE	C2-N1-C8A	3.22	121.75	114.54
5	C	404	GUE	C2-N1-C8A	3.17	121.64	114.54
5	A	403	GUE	C6-N5-C1	3.13	114.58	109.46
3	A	401	FE9	N3A-C2A-N1A	-3.00	123.22	127.22
5	C	404	GUE	C6-N5-C1	3.00	114.36	109.46
5	D	405	GUE	CA-N-C11	-3.00	118.47	122.34
3	C	401	FE9	C5-C4-C3	-2.97	118.45	122.88
5	A	403	GUE	CA-N-C11	-2.97	118.52	122.34
5	B	406	GUE	C4A-C4-N3	-2.86	119.52	123.43
3	A	401	FE9	C4A-C5A-N7A	-2.86	106.42	109.40
3	C	401	FE9	O3P-C4-C3	2.81	121.69	118.08
3	C	401	FE9	C4A-C5A-N7A	-2.74	106.55	109.40
5	D	405	GUE	C2-N1-C8A	2.65	120.47	114.54
3	C	401	FE9	C5-C6-N1	-2.63	120.69	122.57
3	C	401	FE9	C1'-N9A-C4A	-2.56	122.15	126.64
3	A	401	FE9	C5-C4-C3	-2.49	119.17	122.88
5	D	405	GUE	C1'-C11-N	2.35	121.58	117.06
5	A	403	GUE	N3-C2-N1	-2.32	121.77	125.42
5	B	406	GUE	C1'-C11-N	2.30	121.47	117.06
5	B	406	GUE	N3-C2-N1	-2.19	121.98	125.42
5	D	405	GUE	C4-C4A-C8A	2.13	115.92	114.53
3	C	401	FE9	C4-C5-C6	2.10	119.11	116.92
3	C	401	FE9	C5M-C5-C6	-2.09	119.14	121.69
3	A	401	FE9	O3P-C4-C5	2.08	120.75	118.08

There are no chirality outliers.

All (12) torsion outliers are listed below:

Mol	Chain	Res	Type	Atoms
5	B	406	GUE	N-CA-CB-CG
5	B	406	GUE	C-CA-CB-CG
4	A	402	GOL	C1-C2-C3-O3
7	B	405	PG4	O2-C3-C4-O3
4	A	402	GOL	O2-C2-C3-O3
7	B	405	PG4	O1-C1-C2-O2
7	B	405	PG4	C3-C4-O3-C5
7	B	405	PG4	C4-C3-O2-C2
3	A	401	FE9	O4'-C4'-C5'-O5'
5	C	404	GUE	N-CA-CB-CG
5	D	405	GUE	C1'-C11-N-CA

Continued on next page...

Continued from previous page...

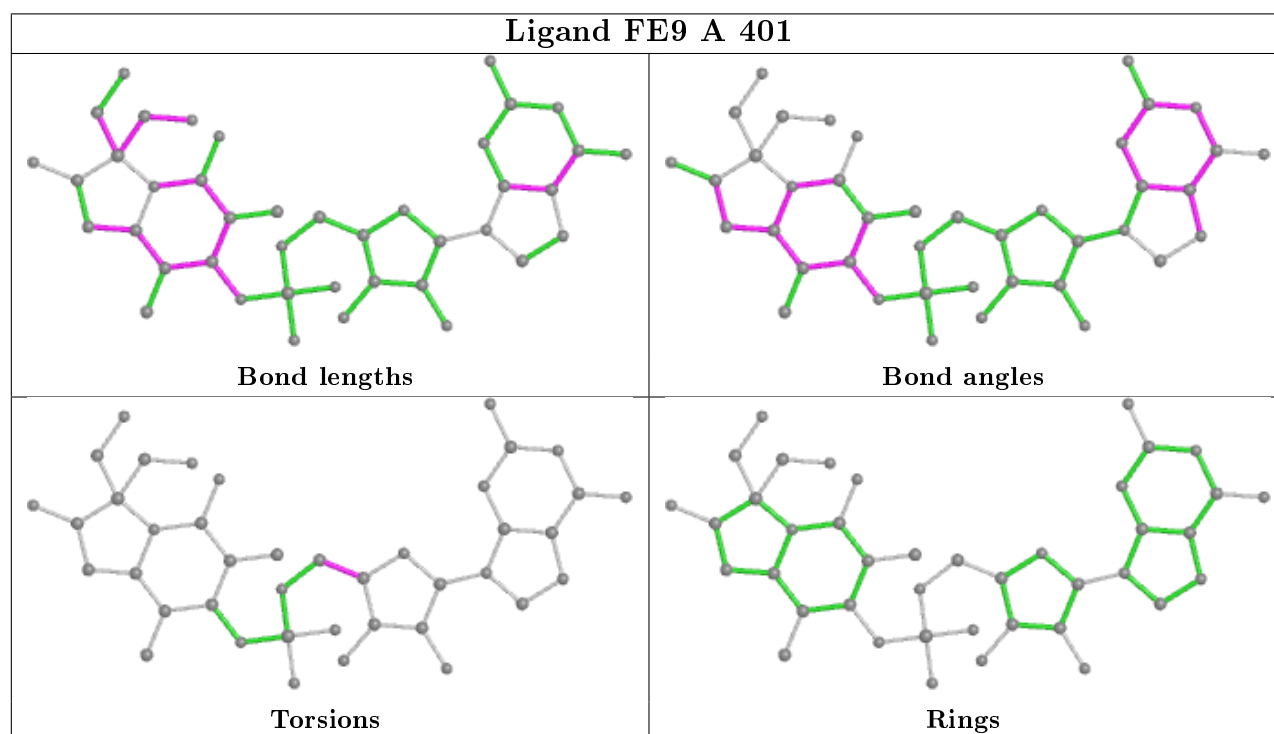
Mol	Chain	Res	Type	Atoms
3	C	401	FE9	O4'-C4'-C5'-O5'

There are no ring outliers.

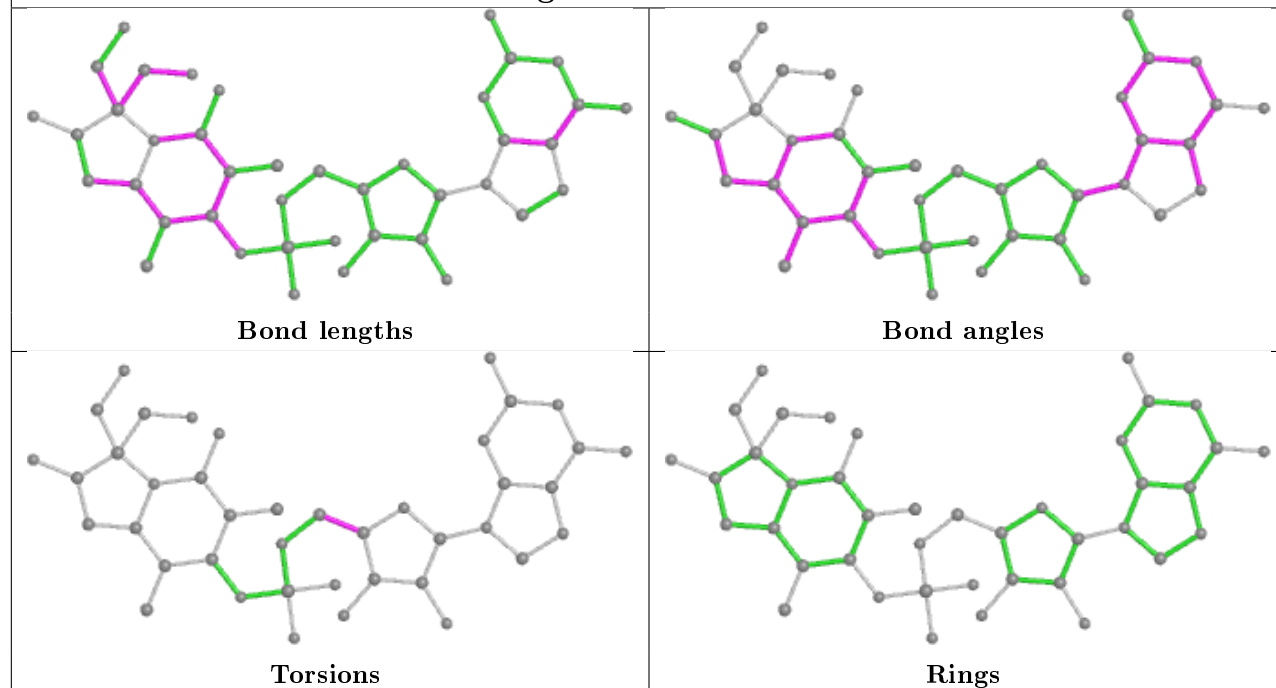
2 monomers are involved in 3 short contacts:

Mol	Chain	Res	Type	Clashes	Symm-Clashes
3	A	401	FE9	2	0
3	C	401	FE9	1	0

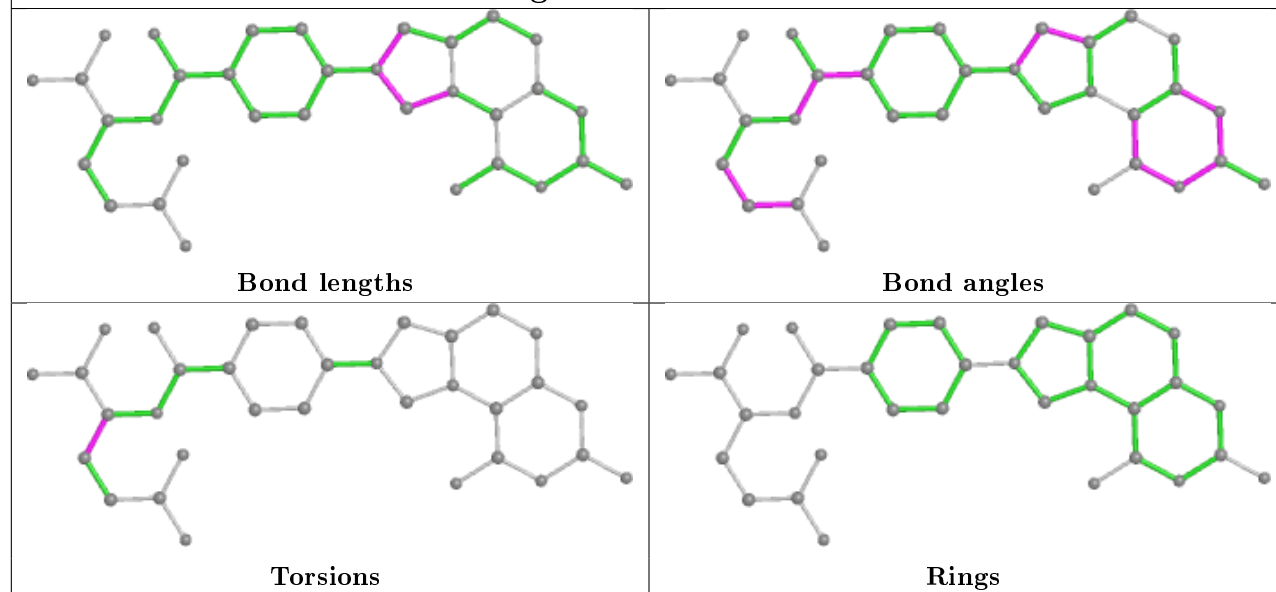
The following is a two-dimensional graphical depiction of Mogul quality analysis of bond lengths, bond angles, torsion angles, and ring geometry for all instances of the Ligand of Interest. In addition, ligands with molecular weight > 250 and outliers as shown on the validation Tables will also be included. For torsion angles, if less than 5% of the Mogul distribution of torsion angles is within 10 degrees of the torsion angle in question, then that torsion angle is considered an outlier. Any bond that is central to one or more torsion angles identified as an outlier by Mogul will be highlighted in the graph. For rings, the root-mean-square deviation (RMSD) between the ring in question and similar rings identified by Mogul is calculated over all ring torsion angles. If the average RMSD is greater than 60 degrees and the minimal RMSD between the ring in question and any Mogul-identified rings is also greater than 60 degrees, then that ring is considered an outlier. The outliers are highlighted in purple. The color gray indicates Mogul did not find sufficient equivalents in the CSD to analyse the geometry.

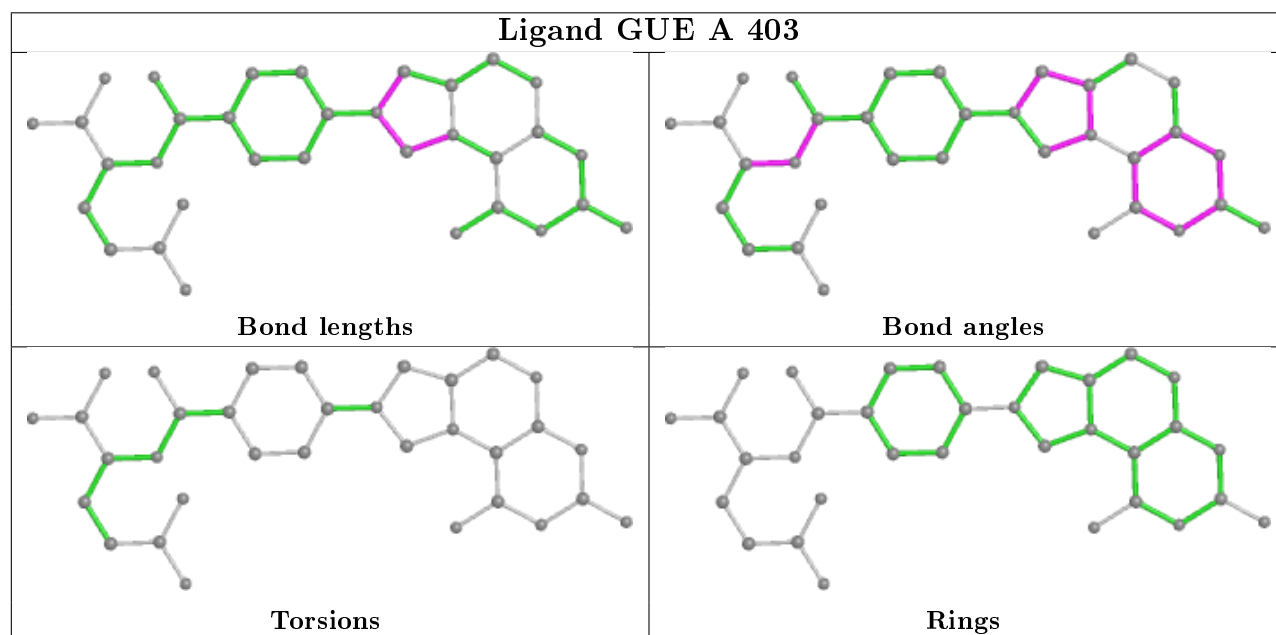
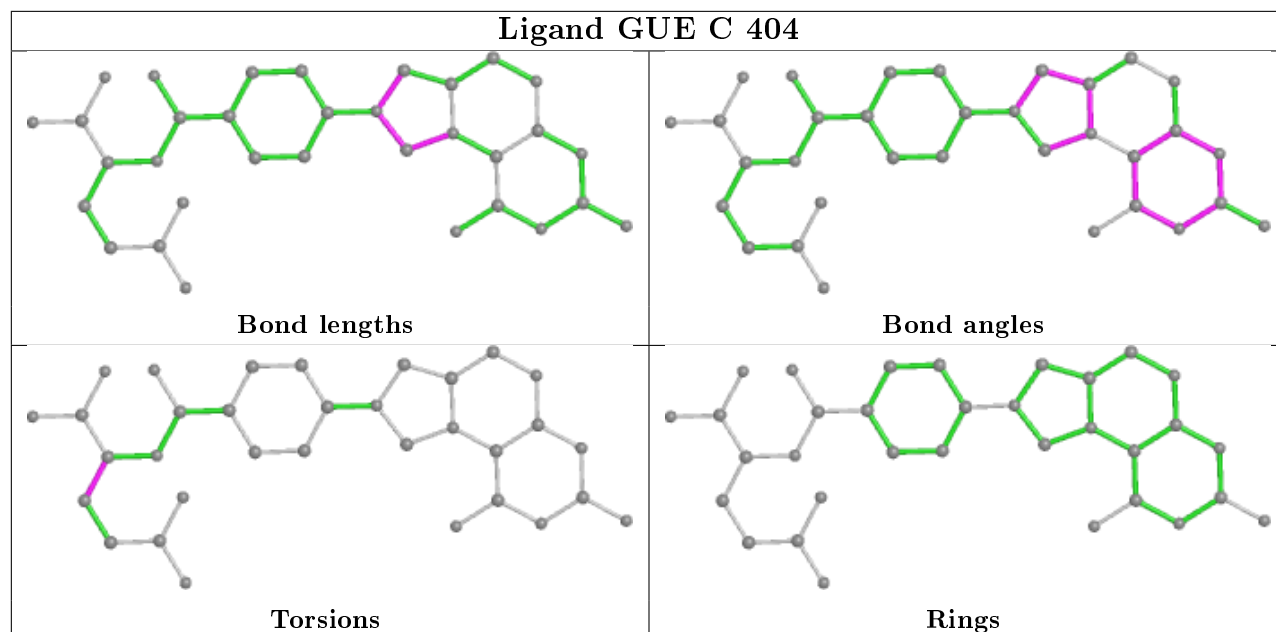


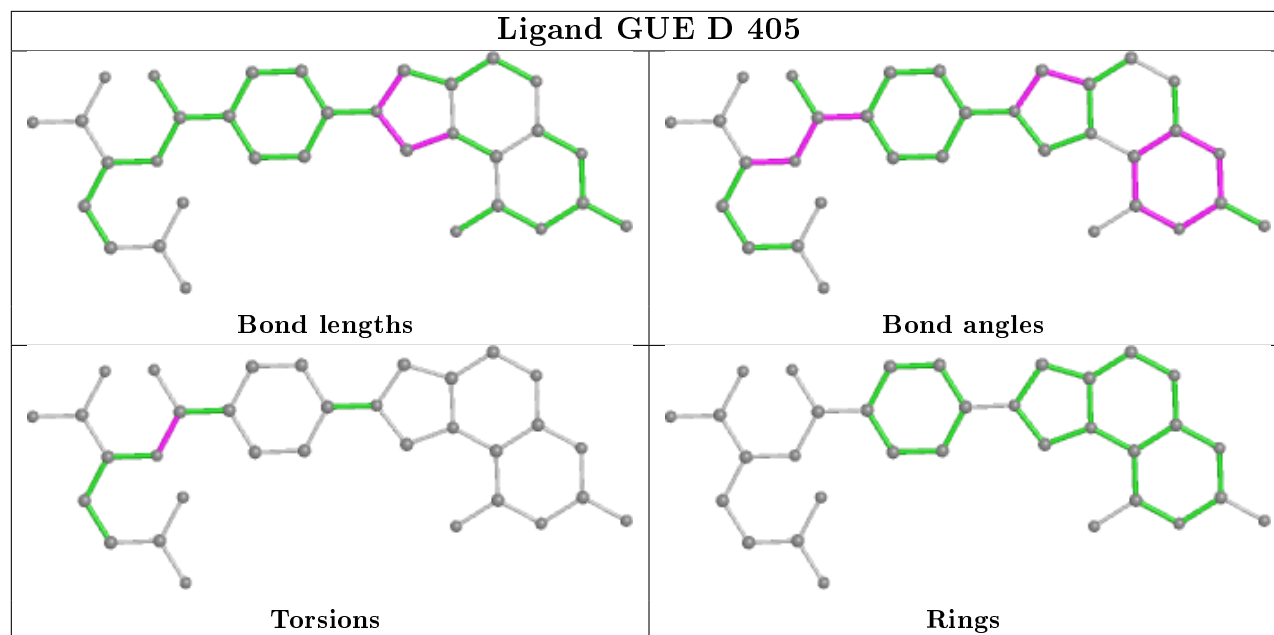
Ligand FE9 C 401



Ligand GUE B 406







5.7 Other polymers [i](#)

There are no such residues in this entry.

5.8 Polymer linkage issues [i](#)

There are no chain breaks in this entry.

6 Fit of model and data

6.1 Protein, DNA and RNA chains

In the following table, the column labelled ‘#RSRZ> 2’ contains the number (and percentage) of RSRZ outliers, followed by percent RSRZ outliers for the chain as percentile scores relative to all X-ray entries and entries of similar resolution. The OWAB column contains the minimum, median, 95th percentile and maximum values of the occupancy-weighted average B-factor per residue. The column labelled ‘Q< 0.9’ lists the number of (and percentage) of residues with an average occupancy less than 0.9.

Mol	Chain	Analysed	<RSRZ>	#RSRZ>2	OWAB(Å ²)	Q<0.9
1	A	350/370 (94%)	-0.10	12 (3%) 45 47	34, 56, 87, 128	0
1	C	351/370 (94%)	-0.12	10 (2%) 53 55	32, 51, 81, 113	0
2	B	356/370 (96%)	-0.23	2 (0%) 89 89	33, 51, 80, 123	0
2	D	354/370 (95%)	-0.21	3 (0%) 86 87	31, 52, 81, 102	0
All	All	1411/1480 (95%)	-0.17	27 (1%) 66 69	31, 52, 84, 128	0

All (27) RSRZ outliers are listed below:

Mol	Chain	Res	Type	RSRZ
2	B	357	GLU	5.3
2	B	355	ASN	4.4
1	C	351	VAL	4.3
1	C	60	ILE	3.8
1	A	59	GLU	3.6
1	A	350	ASN	3.4
1	A	56	VAL	3.4
1	A	58	ASP	2.9
1	C	58	ASP	2.9
1	A	60	ILE	2.9
1	A	11	LEU	2.9
1	A	54	ASP	2.8
2	D	355	ASN	2.7
1	C	350	ASN	2.7
1	C	53	ILE	2.7
1	C	92	ARG	2.6
1	C	62	LYS	2.5
1	C	54	ASP	2.5
1	C	63	LYS	2.5
2	D	353	GLU	2.5
1	A	62	LYS	2.5

Continued on next page...

Continued from previous page...

Mol	Chain	Res	Type	RSRZ
1	A	57	PRO	2.4
1	A	106	TYR	2.3
1	C	59	GLU	2.3
1	A	239	ILE	2.3
1	A	93	GLY	2.1
2	D	54	ASP	2.0

6.2 Non-standard residues in protein, DNA, RNA chains [i](#)

In the following table, the Atoms column lists the number of modelled atoms in the group and the number defined in the chemical component dictionary. The B-factors column lists the minimum, median, 95th percentile and maximum values of B factors of atoms in the group. The column labelled 'Q< 0.9' lists the number of atoms with occupancy less than 0.9.

Mol	Type	Chain	Res	Atoms	RSCC	RSR	B-factors(Å ²)	Q<0.9
2	CSO	B	117	7/8	0.97	0.18	46,46,56,57	0
2	CSO	D	117	7/8	0.97	0.18	50,51,63,64	0

6.3 Carbohydrates [i](#)

There are no carbohydrates in this entry.

6.4 Ligands [i](#)

In the following table, the Atoms column lists the number of modelled atoms in the group and the number defined in the chemical component dictionary. The B-factors column lists the minimum, median, 95th percentile and maximum values of B factors of atoms in the group. The column labelled 'Q< 0.9' lists the number of atoms with occupancy less than 0.9.

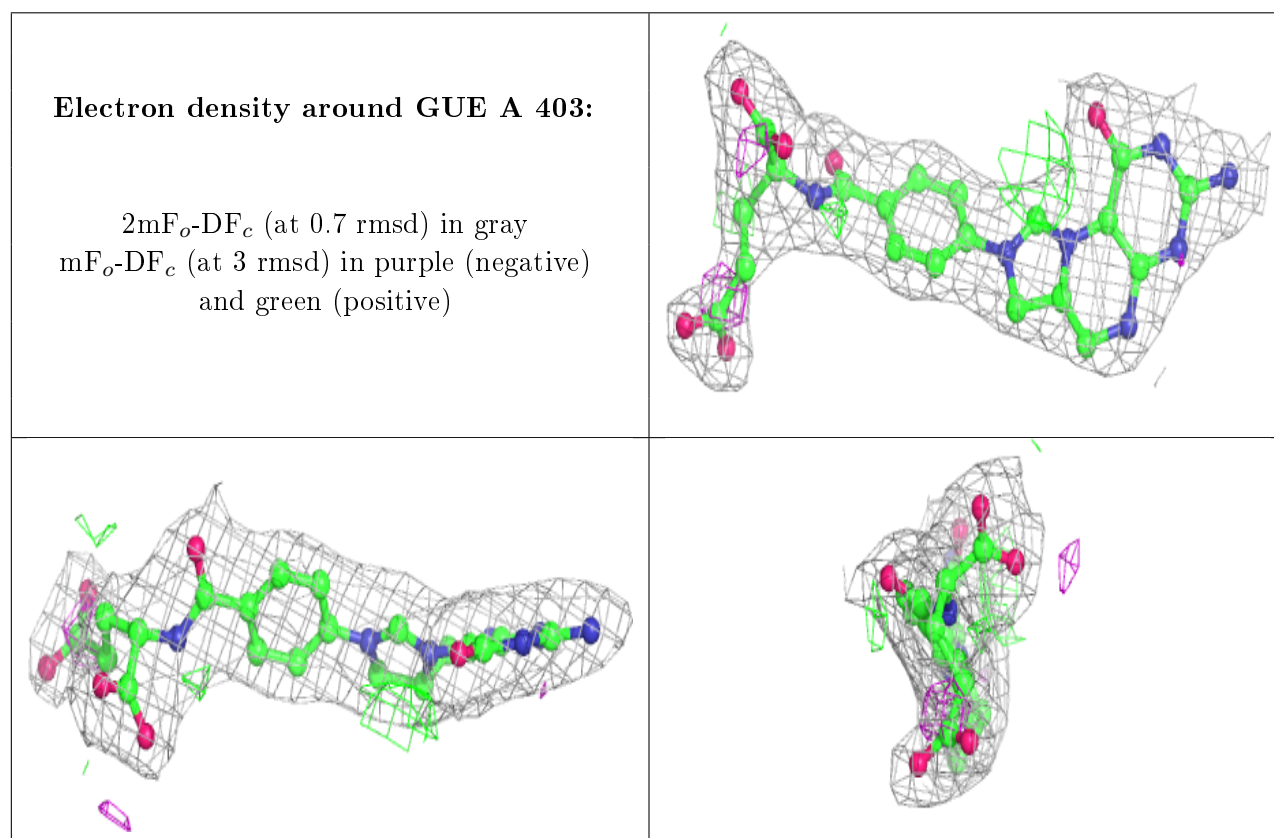
Mol	Type	Chain	Res	Atoms	RSCC	RSR	B-factors(Å ²)	Q<0.9
4	GOL	D	401	6/6	0.61	0.54	82,83,85,86	0
7	PG4	B	405	8/13	0.63	0.42	71,74,74,75	0
6	DMS	B	404	4/4	0.65	0.34	127,128,128,128	0
4	GOL	A	402	6/6	0.87	0.29	57,61,62,64	0
6	DMS	B	402	4/4	0.88	0.30	91,92,92,92	0
6	DMS	C	403	4/4	0.90	0.16	93,93,93,94	0
6	DMS	B	403	4/4	0.92	0.14	92,93,93,94	0
5	GUE	A	403	33/33	0.93	0.12	43,55,76,77	0
5	GUE	C	404	33/33	0.93	0.13	40,47,79,80	0
6	DMS	D	404	4/4	0.93	0.13	95,96,96,96	0

Continued on next page...

Continued from previous page...

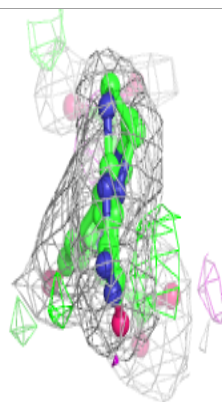
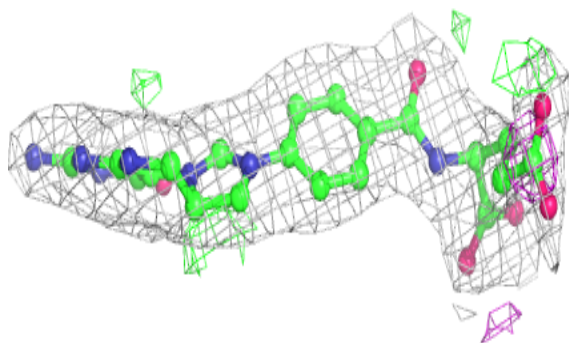
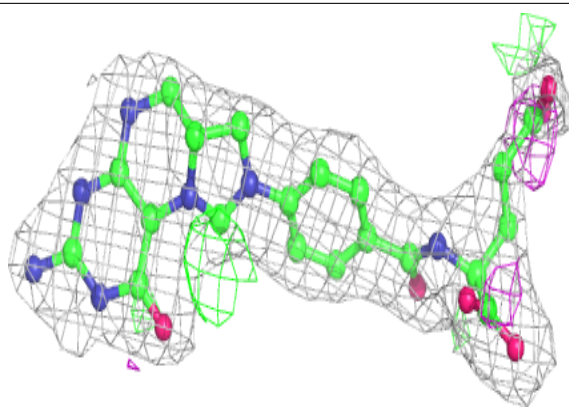
Mol	Type	Chain	Res	Atoms	RSCC	RSR	B-factors(\AA^2)	Q<0.9
5	GUE	B	406	33/33	0.94	0.14	45,55,80,82	0
6	DMS	B	401	4/4	0.94	0.12	85,85,86,86	0
5	GUE	D	405	33/33	0.94	0.14	42,51,74,75	0
6	DMS	D	403	4/4	0.95	0.14	81,82,83,83	0
6	DMS	D	402	4/4	0.95	0.14	75,76,77,77	0
3	FE9	C	401	41/43	0.97	0.10	47,55,59,59	0
3	FE9	A	401	41/43	0.97	0.10	48,55,62,65	0
6	DMS	C	402	4/4	0.97	0.07	72,72,72,73	0

The following is a graphical depiction of the model fit to experimental electron density of all instances of the Ligand of Interest. In addition, ligands with molecular weight > 250 and outliers as shown on the geometry validation Tables will also be included. Each fit is shown from different orientation to approximate a three-dimensional view.

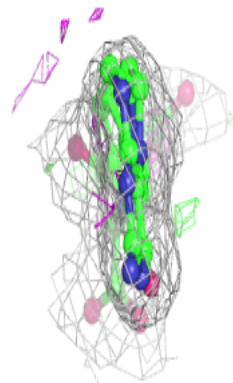
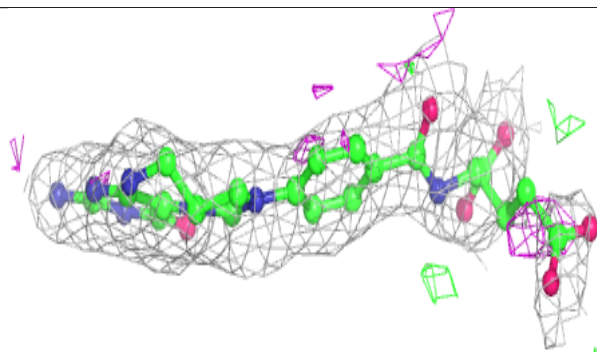
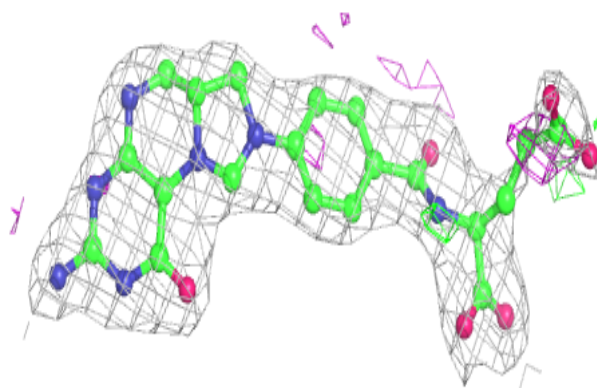


Electron density around GUE C 404:

$2mF_o-DF_c$ (at 0.7 rmsd) in gray
 mF_o-DF_c (at 3 rmsd) in purple (negative)
and green (positive)

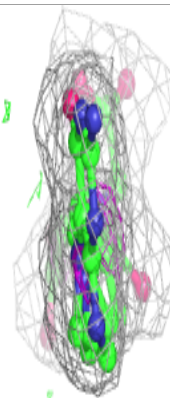
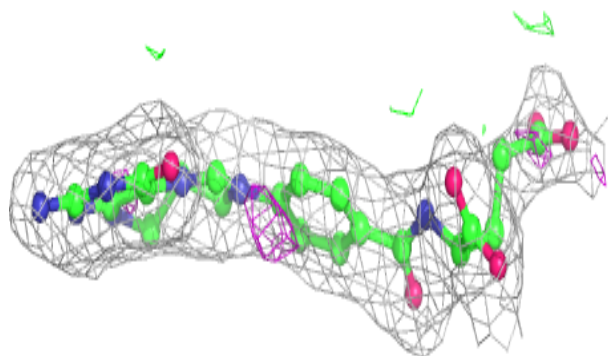
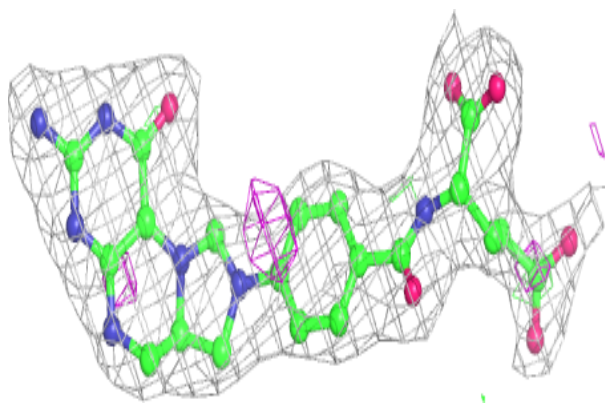
**Electron density around GUE B 406:**

$2mF_o-DF_c$ (at 0.7 rmsd) in gray
 mF_o-DF_c (at 3 rmsd) in purple (negative)
and green (positive)

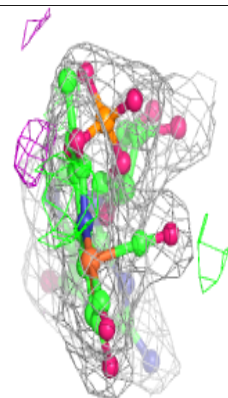
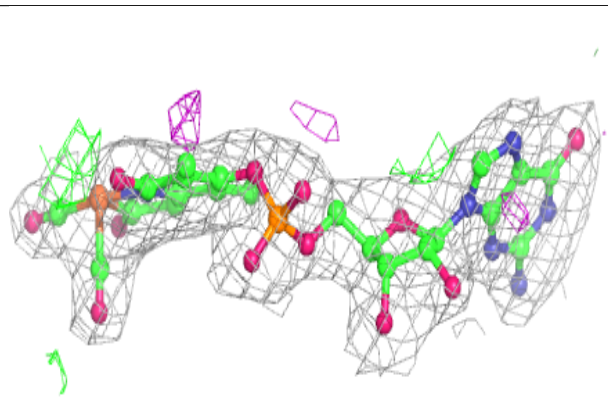
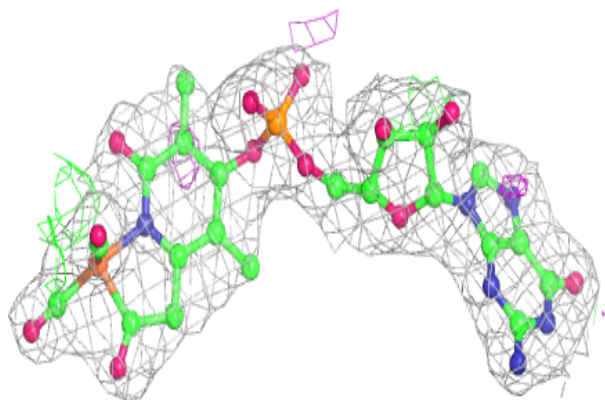


Electron density around GUE D 405:

$2mF_o-DF_c$ (at 0.7 rmsd) in gray
 mF_o-DF_c (at 3 rmsd) in purple (negative)
and green (positive)

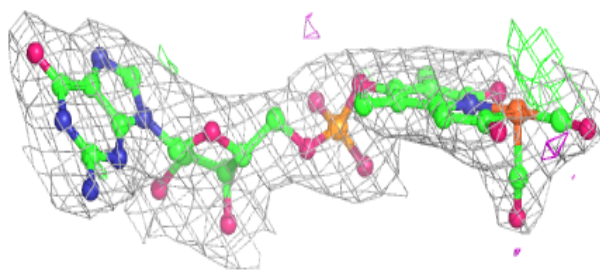
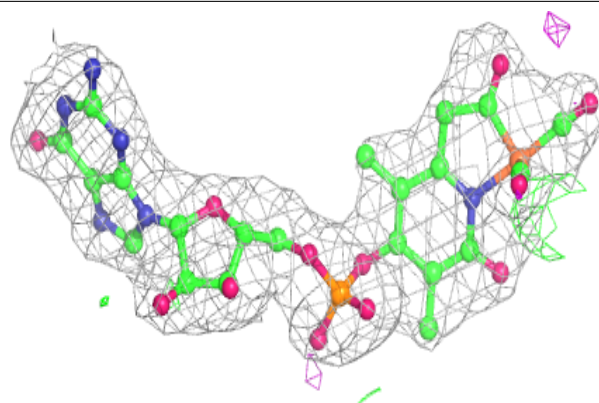
**Electron density around FE9 C 401:**

$2mF_o-DF_c$ (at 0.7 rmsd) in gray
 mF_o-DF_c (at 3 rmsd) in purple (negative)
and green (positive)



Electron density around FE9 A 401:

$2mF_o - DF_c$ (at 0.7 rmsd) in gray
 $mF_o - DF_c$ (at 3 rmsd) in purple (negative)
and green (positive)



6.5 Other polymers [i](#)

There are no such residues in this entry.