



Full wwPDB EM Validation Report ⓘ

Nov 1, 2022 – 04:04 PM EDT

PDB ID : 5HX2
EMDB ID : EMD-8064
Title : In vitro assembled star-shaped hubless T4 baseplate
Authors : Yap, M.L.; Klose, T.; Fokine, A.; Rossmann, M.G.
Deposited on : 2016-01-29
Resolution : 3.80 Å(reported)
Based on initial models : 1N80, 2FKK, 3H2T

This is a Full wwPDB EM Validation Report for a publicly released PDB entry.

We welcome your comments at validation@mail.wwpdb.org

A user guide is available at

<https://www.wwpdb.org/validation/2017/EMValidationReportHelp>
with specific help available everywhere you see the ⓘ symbol.

The types of validation reports are described at

<http://www.wwpdb.org/validation/2017/FAQs#types>.

The following versions of software and data (see [references ⓘ](#)) were used in the production of this report:

EMDB validation analysis : 0.0.1.dev43
MolProbity : 4.02b-467
Percentile statistics : 20191225.v01 (using entries in the PDB archive December 25th 2019)
MapQ : 1.9.9
Ideal geometry (proteins) : Engh & Huber (2001)
Ideal geometry (DNA, RNA) : Parkinson et al. (1996)
Validation Pipeline (wwPDB-VP) : 2.31.2

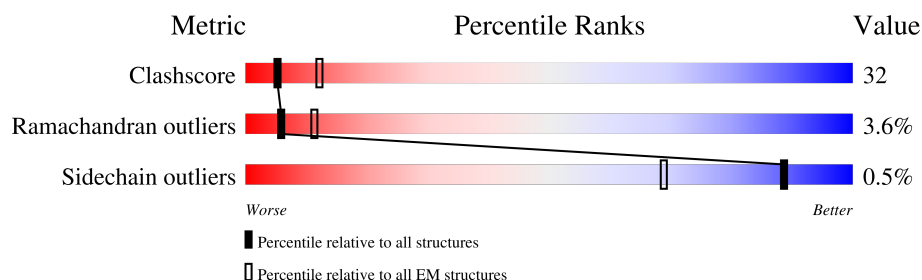
1 Overall quality at a glance

The following experimental techniques were used to determine the structure:

ELECTRON MICROSCOPY

The reported resolution of this entry is 3.80 Å.

Percentile scores (ranging between 0-100) for global validation metrics of the entry are shown in the following graphic. The table shows the number of entries on which the scores are based.



Metric	Whole archive (#Entries)	EM structures (#Entries)
Clashscore	158937	4297
Ramachandran outliers	154571	4023
Sidechain outliers	154315	3826

The table below summarises the geometric issues observed across the polymeric chains and their fit to the map. The red, orange, yellow and green segments of the bar indicate the fraction of residues that contain outliers for ≥ 3 , 2, 1 and 0 types of geometric quality criteria respectively. A grey segment represents the fraction of residues that are not modelled. The numeric value for each fraction is indicated below the corresponding segment, with a dot representing fractions $\leq 5\%$. The upper red bar (where present) indicates the fraction of residues that have poor fit to the EM map (all-atom inclusion $< 40\%$). The numeric value is given above the bar.

Mol	Chain	Length	Quality of chain
1	A	1032	
2	B	334	
2	C	334	
3	D	660	
3	E	660	
4	F	196	
5	G	602	
5	H	602	

Continued on next page...

Continued from previous page...

Mol	Chain	Length	Quality of chain
5	I	602	<div><div></div><div>11%</div><div>40%</div><div>15%</div><div>•</div><div>44%</div></div>

2 Entry composition

There are 5 unique types of molecules in this entry. The entry contains 28612 atoms, of which 0 are hydrogens and 0 are deuteriums.

In the tables below, the AltConf column contains the number of residues with at least one atom in alternate conformation and the Trace column contains the number of residues modelled with at most 2 atoms.

- Molecule 1 is a protein called Baseplate wedge protein gp7.

Mol	Chain	Residues	Atoms					AltConf	Trace
1	A	1030	Total	C	N	O	S	0	0
			7511	4844	1265	1383	19		

- Molecule 2 is a protein called Baseplate wedge protein gp8.

Mol	Chain	Residues	Atoms					AltConf	Trace
2	B	334	Total	C	N	O	S	0	0
			2521	1598	423	485	15		
2	C	332	Total	C	N	O	S	0	0
			2585	1650	428	491	16		

- Molecule 3 is a protein called Baseplate wedge protein gp6.

Mol	Chain	Residues	Atoms					AltConf	Trace
3	D	647	Total	C	N	O	S	0	0
			4845	3072	811	953	9		
3	E	634	Total	C	N	O	S	0	0
			4660	2966	784	902	8		

- Molecule 4 is a protein called Baseplate wedge protein gp53.

Mol	Chain	Residues	Atoms					AltConf	Trace
4	F	192	Total	C	N	O	S	0	0
			1495	972	239	278	6		

- Molecule 5 is a protein called Baseplate wedge protein gp10.

Mol	Chain	Residues	Atoms				AltConf	Trace
5	G	340	Total	C	N	O	0	0
			1665	985	340	340		
5	H	340	Total	C	N	O	0	0
			1665	985	340	340		

Continued on next page...

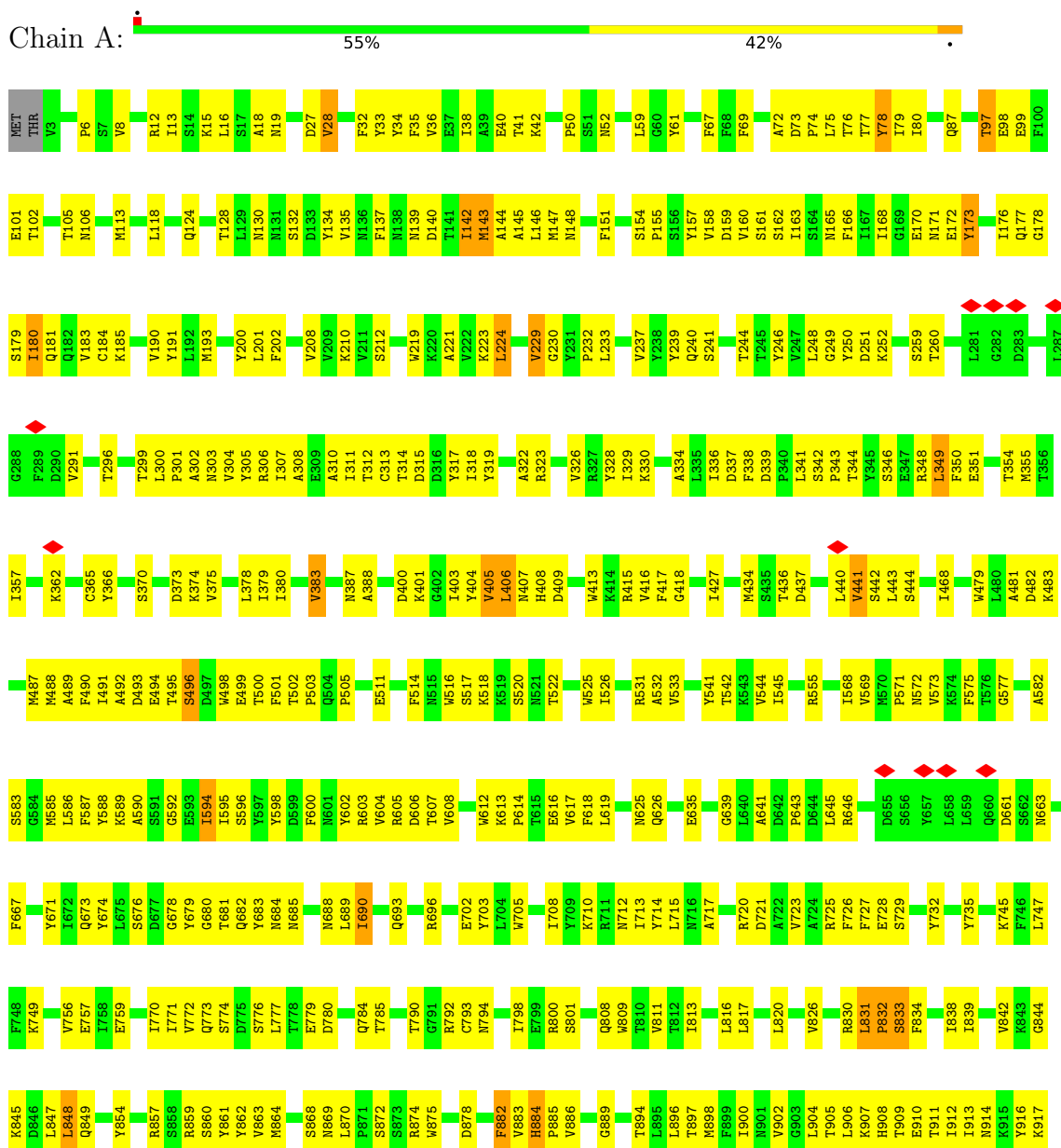
Continued from previous page...

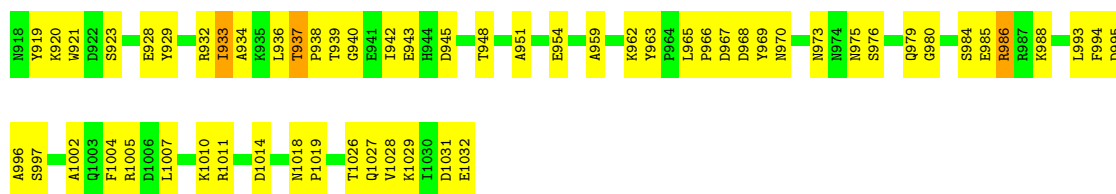
Mol	Chain	Residues	Atoms				AltConf	Trace
5	I	340	Total	C	N	O	0	0
			1665	985	340	340		

3 Residue-property plots

These plots are drawn for all protein, RNA, DNA and oligosaccharide chains in the entry. The first graphic for a chain summarises the proportions of the various outlier classes displayed in the second graphic. The second graphic shows the sequence view annotated by issues in geometry and atom inclusion in map density. Residues are color-coded according to the number of geometric quality criteria for which they contain at least one outlier: green = 0, yellow = 1, orange = 2 and red = 3 or more. A red diamond above a residue indicates a poor fit to the EM map for this residue (all-atom inclusion < 40%). Stretches of 2 or more consecutive residues without any outlier are shown as a green connector. Residues present in the sample, but not in the model, are shown in grey.

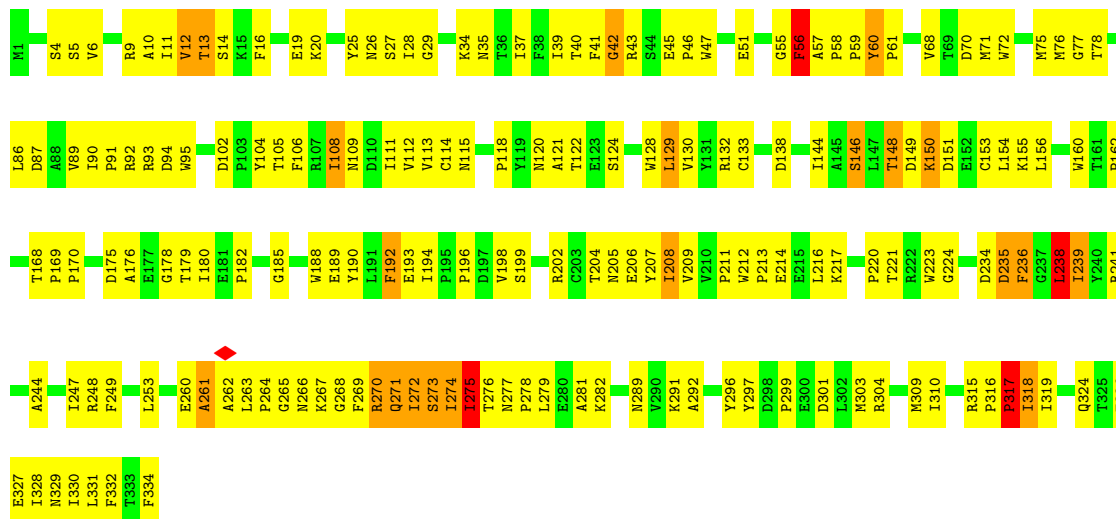
• Molecule 1: Baseplate wedge protein gp7





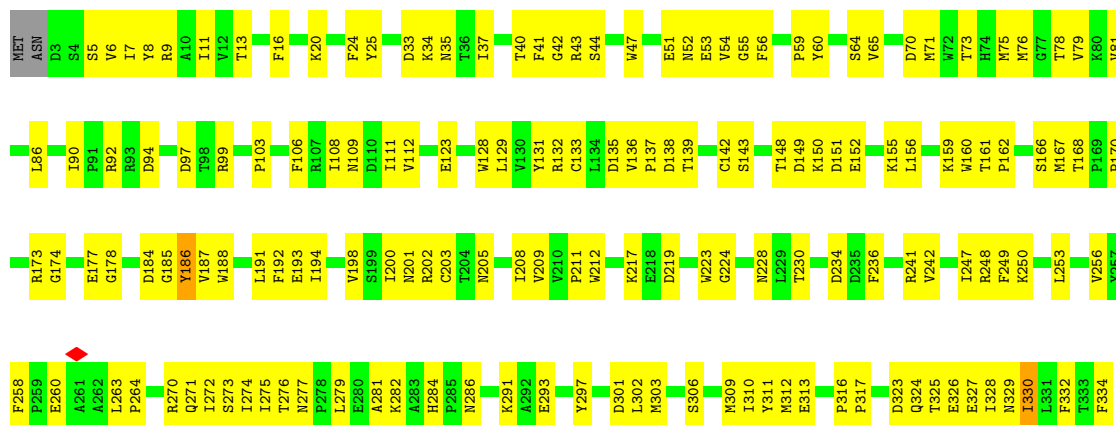
• Molecule 2: Baseplate wedge protein gp8

Chain B: 46% 47% 6%



• Molecule 2: Baseplate wedge protein gp8

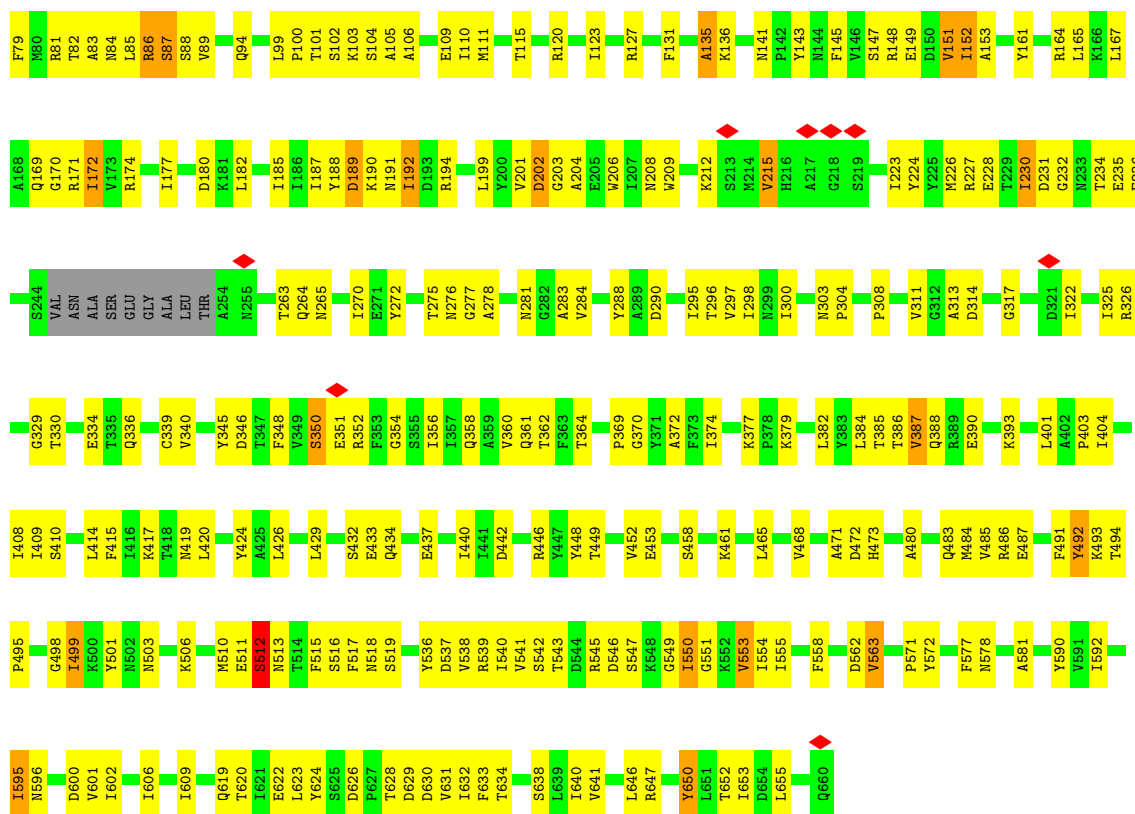
Chain C: 52% 47% 1%



• Molecule 3: Baseplate wedge protein gp6

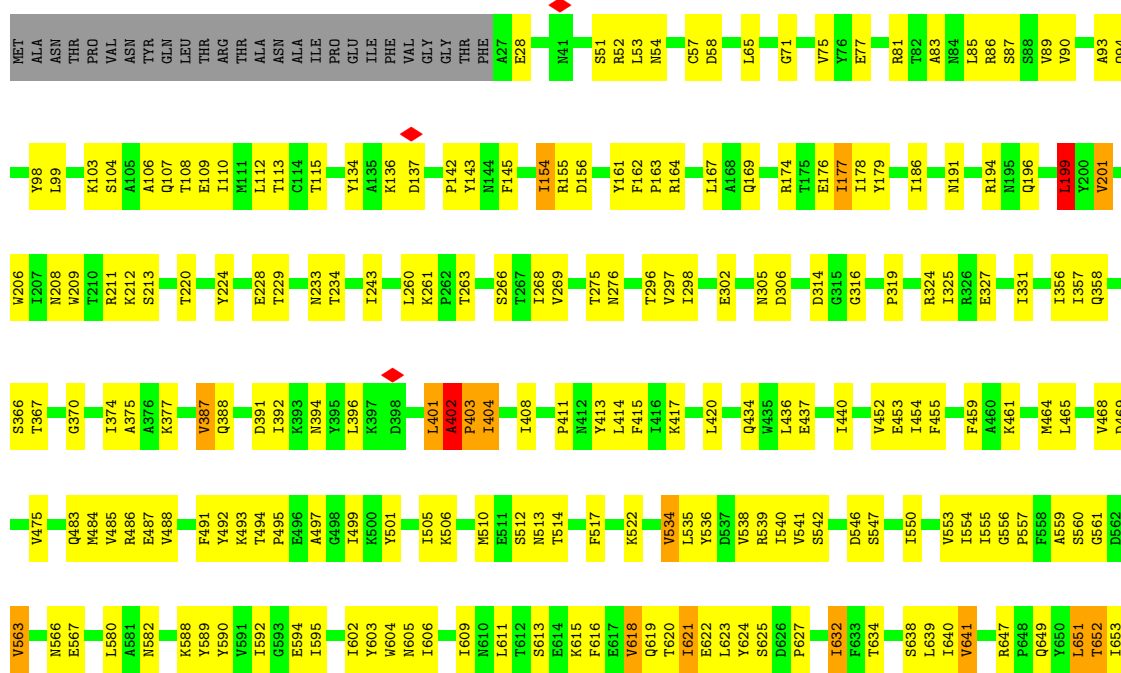
Chain D: 54% 41% 5%





• Molecule 3: Baseplate wedge protein gp6

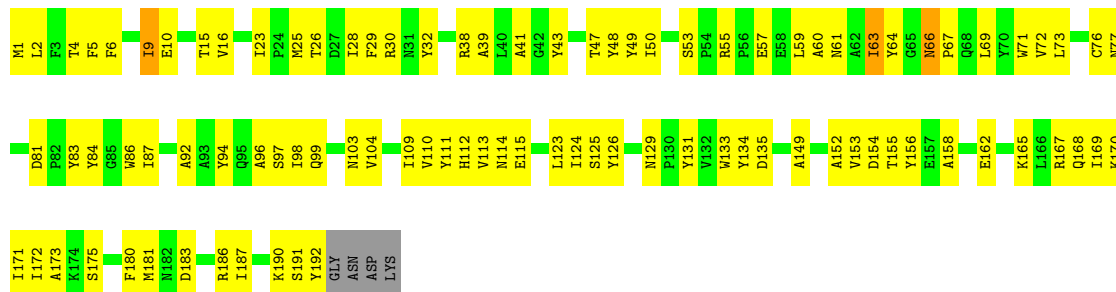
Chain E: 63% 30%





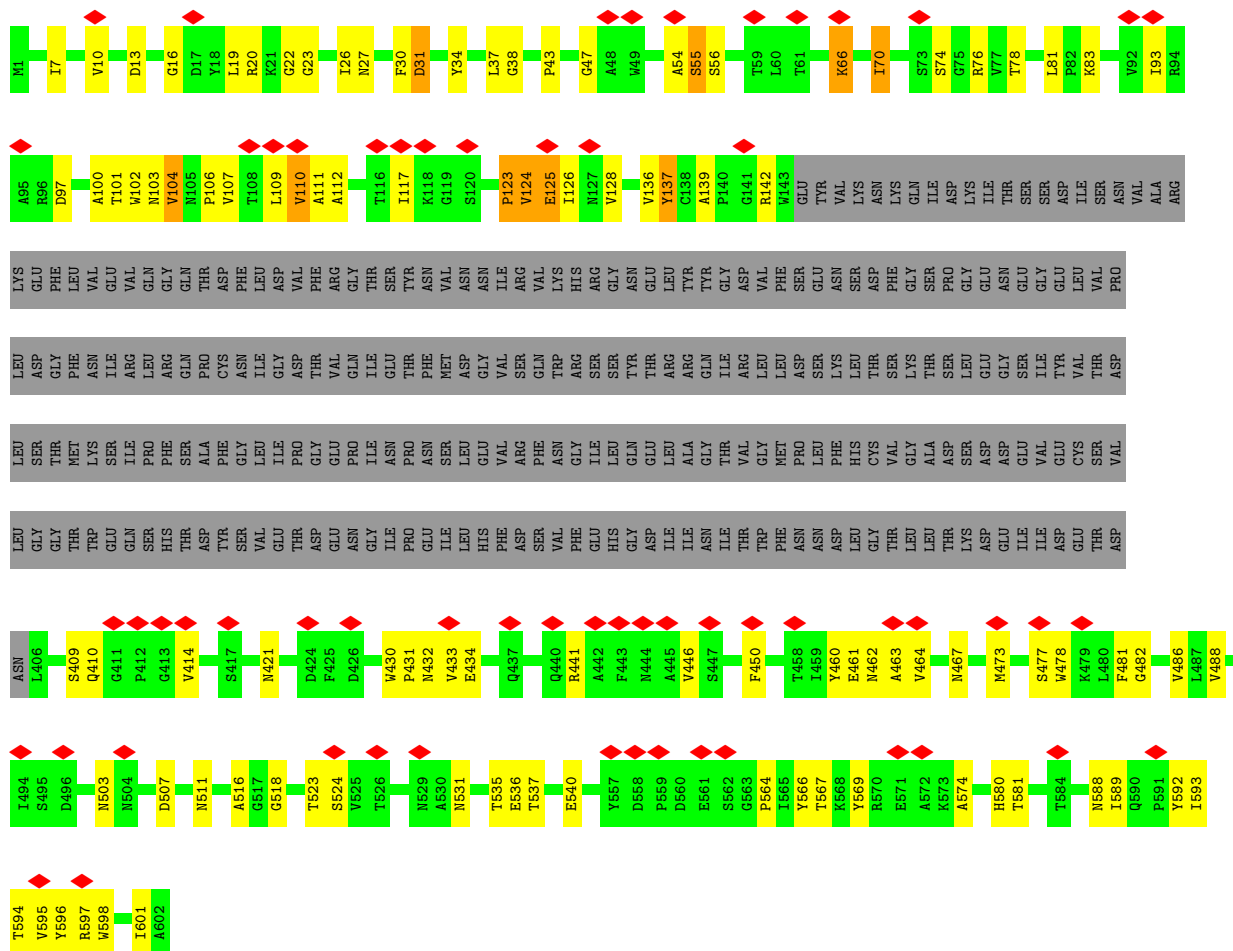
• Molecule 4: Baseplate wedge protein gp53

Chain F: 50% 46% ..



• Molecule 5: Baseplate wedge protein gp10

Chain G: 10% 39% 16% 44%



• Molecule 5: Baseplate wedge protein gp10





4 Experimental information

Property	Value	Source
EM reconstruction method	SINGLE PARTICLE	Depositor
Imposed symmetry	POINT, C6	Depositor
Number of particles used	45607	Depositor
Resolution determination method	FSC 0.143 CUT-OFF	Depositor
CTF correction method	PHASE FLIPPING AND AMPLITUDE CORRECTION	Depositor
Microscope	FEI TITAN KRIOS	Depositor
Voltage (kV)	300	Depositor
Electron dose ($e^-/\text{\AA}^2$)	35	Depositor
Minimum defocus (nm)	400	Depositor
Maximum defocus (nm)	3740	Depositor
Magnification	38168	Depositor
Image detector	GATAN K2 SUMMIT (4k x 4k)	Depositor
Maximum map value	0.603	Depositor
Minimum map value	-0.389	Depositor
Average map value	0.000	Depositor
Map value standard deviation	0.011	Depositor
Recommended contour level	0.07	Depositor
Map size (Å)	832.0, 832.0, 832.0	wwPDB
Map dimensions	640, 640, 640	wwPDB
Map angles (°)	90.0, 90.0, 90.0	wwPDB
Pixel spacing (Å)	1.3, 1.3, 1.3	Depositor

5 Model quality

5.1 Standard geometry

The Z score for a bond length (or angle) is the number of standard deviations the observed value is removed from the expected value. A bond length (or angle) with $|Z| > 5$ is considered an outlier worth inspection. RMSZ is the root-mean-square of all Z scores of the bond lengths (or angles).

Mol	Chain	Bond lengths		Bond angles	
		RMSZ	# Z >5	RMSZ	# Z >5
1	A	0.37	0/7697	0.62	2/10550 (0.0%)
2	B	0.51	0/2591	0.72	2/3546 (0.1%)
2	C	0.55	0/2662	0.65	0/3640
3	D	0.30	0/4935	0.61	0/6735
3	E	0.28	0/4750	0.56	0/6485
4	F	0.52	0/1536	0.64	0/2095
5	G	0.33	0/1663	0.68	0/2304
5	H	0.34	0/1663	0.72	0/2304
5	I	0.35	0/1663	0.68	0/2304
All	All	0.39	0/29160	0.64	4/39963 (0.0%)

Chiral center outliers are detected by calculating the chiral volume of a chiral center and verifying if the center is modelled as a planar moiety or with the opposite hand. A planarity outlier is detected by checking planarity of atoms in a peptide group, atoms in a mainchain group or atoms of a sidechain that are expected to be planar.

Mol	Chain	#Chirality outliers	#Planarity outliers
1	A	0	5
2	B	0	3
2	C	0	2
3	D	0	9
3	E	0	5
4	F	0	1
5	G	0	9
5	H	0	10
5	I	0	11
All	All	0	55

There are no bond length outliers.

All (4) bond angle outliers are listed below:

Mol	Chain	Res	Type	Atoms	Z	Observed(°)	Ideal(°)
1	A	848	LEU	CA-CB-CG	5.42	127.77	115.30

Continued on next page...

Continued from previous page...

Mol	Chain	Res	Type	Atoms	Z	Observed(°)	Ideal(°)
2	B	274	ILE	N-CA-C	-5.34	96.59	111.00
2	B	42	GLY	N-CA-C	5.29	126.31	113.10
1	A	349	LEU	CA-CB-CG	5.08	126.98	115.30

There are no chirality outliers.

All (55) planarity outliers are listed below:

Mol	Chain	Res	Type	Group
1	A	496	SER	Peptide
1	A	831	LEU	Peptide
1	A	832	PRO	Peptide
1	A	917	LYS	Peptide
1	A	97	THR	Peptide
2	B	124	SER	Peptide
2	B	129	LEU	Peptide
2	B	317	PRO	Peptide
2	C	186	TYR	Peptide
2	C	316	PRO	Peptide
3	D	135	ALA	Peptide
3	D	136	LYS	Peptide
3	D	149	GLU	Peptide
3	D	189	ASP	Peptide
3	D	43	PHE	Peptide
3	D	512	SER	Peptide
3	D	572	TYR	Peptide
3	D	577	PHE	Peptide
3	D	650	TYR	Peptide
3	E	199	LEU	Peptide
3	E	401	LEU	Peptide
3	E	402	ALA	Peptide
3	E	588	LYS	Peptide
3	E	651	LEU	Peptide
4	F	66	ASN	Peptide
5	G	112	ALA	Peptide
5	G	125	GLU	Peptide
5	G	137	TYR	Peptide
5	G	431	PRO	Peptide
5	G	524	SER	Peptide
5	G	566	TYR	Peptide
5	G	567	THR	Peptide
5	G	580	HIS	Peptide
5	G	66	LYS	Peptide

Continued on next page...

Continued from previous page...

Mol	Chain	Res	Type	Group
5	H	120	SER	Peptide
5	H	17	ASP	Peptide
5	H	408	VAL	Peptide
5	H	429	GLY	Peptide
5	H	49	TRP	Peptide
5	H	496	ASP	Peptide
5	H	583	PRO	Peptide
5	H	592	TYR	Peptide
5	H	76	ARG	Peptide
5	H	97	ASP	Peptide
5	I	125	GLU	Peptide
5	I	18	TYR	Peptide
5	I	50	LYS	Peptide
5	I	556	GLN	Peptide
5	I	557	TYR	Peptide
5	I	60	LEU	Peptide
5	I	62	ALA	Peptide
5	I	66	LYS	Peptide
5	I	68	TYR	Peptide
5	I	7	ILE	Peptide
5	I	84	GLY	Peptide

5.2 Too-close contacts

In the following table, the Non-H and H(model) columns list the number of non-hydrogen atoms and hydrogen atoms in the chain respectively. The H(added) column lists the number of hydrogen atoms added and optimized by MolProbity. The Clashes column lists the number of clashes within the asymmetric unit, whereas Symm-Clashes lists symmetry-related clashes.

Mol	Chain	Non-H	H(model)	H(added)	Clashes	Symm-Clashes
1	A	7511	0	6716	677	0
2	B	2521	0	2282	345	0
2	C	2585	0	2410	232	0
3	D	4845	0	4477	346	0
3	E	4660	0	4258	182	0
4	F	1495	0	1361	121	0
5	G	1665	0	764	81	0
5	H	1665	0	764	81	0
5	I	1665	0	764	86	0
All	All	28612	0	23796	1674	0

The all-atom clashscore is defined as the number of clashes found per 1000 atoms (including

hydrogen atoms). The all-atom clashscore for this structure is 32.

All (1674) close contacts within the same asymmetric unit are listed below, sorted by their clash magnitude.

Atom-1	Atom-2	Interatomic distance (Å)	Clash overlap (Å)
2:B:47:TRP:CZ2	2:B:59:PRO:HD2	1.18	1.67
1:A:902:VAL:HG21	2:B:16:PHE:CE2	1.20	1.67
1:A:685:ASN:ND2	3:D:21:PHE:CE1	1.68	1.58
1:A:663:ASN:CB	3:D:46:TYR:HA	1.11	1.57
1:A:898:MET:HE3	2:C:272:ILE:CD1	1.33	1.56
1:A:667:PHE:HE1	3:D:37:LEU:CD2	1.19	1.52
1:A:1032:GLU:CB	2:B:60:TYR:CD2	1.95	1.50
1:A:667:PHE:CE1	3:D:37:LEU:HD23	1.46	1.47
1:A:720:ARG:NH1	3:D:12:ARG:HD3	1.17	1.47
1:A:679:TYR:CE2	3:D:20:ILE:CD1	1.97	1.46
1:A:898:MET:CE	2:C:272:ILE:HD13	1.46	1.45
1:A:679:TYR:CZ	3:D:20:ILE:HD13	1.48	1.43
1:A:667:PHE:CE1	3:D:37:LEU:CD2	1.97	1.43
1:A:663:ASN:CB	3:D:46:TYR:CA	1.97	1.43
1:A:911:THR:CG2	2:B:315:ARG:HH22	1.27	1.43
1:A:679:TYR:CZ	3:D:20:ILE:CD1	1.98	1.42
1:A:911:THR:HG23	2:B:315:ARG:NH2	1.32	1.42
2:B:47:TRP:CZ2	2:B:59:PRO:CD	2.01	1.42
1:A:161:SER:OG	3:E:156:ASP:CB	1.64	1.41
1:A:886:VAL:HG11	3:D:345:TYR:CE2	1.56	1.41
1:A:902:VAL:CG2	2:B:16:PHE:HE2	1.29	1.40
1:A:685:ASN:ND2	3:D:21:PHE:CD1	1.90	1.40
2:B:239:ILE:HD11	2:B:244:ALA:CB	1.53	1.39
1:A:679:TYR:OH	3:D:20:ILE:CD1	1.64	1.39
1:A:1002:ALA:HB3	5:G:10:VAL:CB	1.49	1.39
1:A:689:LEU:CD1	3:D:75:VAL:HG12	1.52	1.38
1:A:923:SER:HB2	5:I:20:ARG:CB	1.54	1.35
1:A:898:MET:CE	2:C:272:ILE:CD1	2.01	1.33
3:D:288:TYR:CB	3:D:297:VAL:HG11	1.58	1.31
1:A:679:TYR:CE2	3:D:20:ILE:HD11	1.61	1.29
1:A:911:THR:OG1	2:B:330:ILE:HG22	1.14	1.29
1:A:1032:GLU:CB	2:B:60:TYR:HD2	1.37	1.26
2:B:60:TYR:OH	2:C:11:ILE:HG21	1.31	1.25
2:B:275:ILE:HD12	2:B:276:THR:N	1.47	1.25
3:D:86:ARG:HG3	3:D:322:ILE:CD1	1.68	1.24
1:A:898:MET:CB	2:C:330:ILE:CD1	2.17	1.23
1:A:661:ASP:CB	3:D:47:ASP:CB	2.17	1.22
4:F:57:GLU:O	4:F:86:TRP:CZ3	1.92	1.22

Continued on next page...

Continued from previous page...

Atom-1	Atom-2	Interatomic distance (Å)	Clash overlap (Å)
1:A:902:VAL:CG2	2:B:16:PHE:CE2	2.11	1.22
1:A:1032:GLU:CB	2:B:60:TYR:CE2	2.22	1.21
1:A:911:THR:OG1	2:B:330:ILE:CG2	1.87	1.21
3:D:70:PHE:CE1	4:F:26:THR:CG2	2.25	1.20
1:A:908:HIS:HB2	2:B:332:PHE:CE1	1.78	1.19
1:A:1028:VAL:CG2	2:C:7:ILE:HG22	1.74	1.18
1:A:720:ARG:NH1	3:D:12:ARG:CD	2.07	1.17
1:A:995:ASP:O	5:I:12:ASP:O	1.61	1.17
2:B:47:TRP:HZ2	2:B:59:PRO:CD	1.44	1.17
1:A:898:MET:CG	2:C:330:ILE:HD13	1.73	1.17
1:A:913:ILE:HG21	2:B:328:ILE:CD1	1.52	1.17
3:D:70:PHE:HE1	4:F:26:THR:CG2	1.56	1.17
3:D:115:THR:HG22	3:D:298:ILE:HD11	1.26	1.17
1:A:912:ILE:N	2:B:329:ASN:O	1.79	1.16
1:A:679:TYR:CE2	3:D:20:ILE:HD13	1.69	1.16
1:A:685:ASN:CG	3:D:21:PHE:CE1	2.17	1.16
1:A:161:SER:O	3:E:154:ILE:HD12	1.45	1.15
1:A:913:ILE:CG2	2:B:328:ILE:HD13	1.76	1.14
3:D:70:PHE:HE1	4:F:26:THR:HG23	1.09	1.14
1:A:898:MET:CB	2:C:330:ILE:HD12	1.74	1.14
1:A:1018:ASN:CB	2:B:91:PRO:HB3	1.79	1.13
2:B:239:ILE:CD1	2:B:244:ALA:CB	2.25	1.13
2:B:239:ILE:CD1	2:B:244:ALA:HB2	1.79	1.13
1:A:886:VAL:CG1	3:D:345:TYR:HE2	1.61	1.13
1:A:997:SER:O	5:G:19:LEU:HA	1.44	1.12
1:A:689:LEU:HD12	3:D:75:VAL:HG12	1.31	1.12
2:B:239:ILE:HD11	2:B:244:ALA:HB3	1.15	1.11
1:A:886:VAL:O	3:D:364:THR:HB	1.48	1.11
1:A:33:TYR:HE2	2:B:155:LYS:NZ	1.48	1.11
1:A:912:ILE:O	2:B:329:ASN:HB2	1.52	1.10
3:D:86:ARG:HD2	3:D:322:ILE:HD11	1.22	1.10
3:D:82:THR:O	4:F:15:THR:HG21	1.49	1.10
3:D:86:ARG:CD	3:D:322:ILE:HD11	1.80	1.10
1:A:679:TYR:OH	3:D:20:ILE:HD12	1.47	1.10
1:A:874:ARG:NH2	2:C:54:VAL:HA	1.66	1.10
1:A:912:ILE:HG23	2:B:329:ASN:HB2	1.34	1.09
1:A:902:VAL:HG21	2:B:16:PHE:CD2	1.87	1.09
1:A:874:ARG:HH22	2:C:54:VAL:CA	1.65	1.09
1:A:898:MET:HB2	2:C:330:ILE:HD12	1.11	1.09
1:A:161:SER:O	3:E:154:ILE:CD1	1.99	1.08
1:A:913:ILE:HG21	2:B:328:ILE:HD13	1.19	1.08

Continued on next page...

Continued from previous page...

Atom-1	Atom-2	Interatomic distance (Å)	Clash overlap (Å)
1:A:861:TYR:HE2	3:D:369:PRO:HG3	1.01	1.08
1:A:898:MET:HG3	2:C:330:ILE:HD13	1.21	1.08
3:D:115:THR:CG2	3:D:298:ILE:HD11	1.84	1.08
1:A:645:LEU:HD11	4:F:83:TYR:CD2	1.89	1.08
1:A:689:LEU:HD13	3:D:75:VAL:HG12	1.37	1.07
1:A:667:PHE:CZ	3:D:60:LEU:HD21	1.89	1.07
1:A:906:LEU:CD2	2:B:334:PHE:CB	2.32	1.07
1:A:33:TYR:CE2	2:B:155:LYS:NZ	2.23	1.06
1:A:861:TYR:CE2	3:D:369:PRO:HG3	1.88	1.06
3:D:77:GLU:OE2	4:F:29:PHE:CZ	2.08	1.06
1:A:898:MET:SD	2:C:272:ILE:HD11	1.96	1.06
1:A:912:ILE:O	2:B:329:ASN:N	1.89	1.05
1:A:923:SER:CB	5:I:20:ARG:CB	2.34	1.05
1:A:645:LEU:HD11	4:F:83:TYR:CE2	1.91	1.05
1:A:1002:ALA:CB	5:G:10:VAL:CB	2.35	1.05
1:A:898:MET:HB2	2:C:330:ILE:CD1	1.82	1.04
1:A:162:SER:OG	3:E:162:PHE:CD2	2.08	1.04
1:A:645:LEU:CD1	4:F:83:TYR:CD2	2.41	1.04
1:A:667:PHE:CE1	3:D:37:LEU:HD21	1.86	1.03
1:A:161:SER:CB	3:E:156:ASP:CB	2.36	1.03
2:B:47:TRP:CH2	2:B:59:PRO:HD2	1.92	1.03
1:A:1028:VAL:HG22	2:C:7:ILE:HG22	1.36	1.02
1:A:847:LEU:CD2	2:C:325:THR:CG2	2.38	1.02
3:D:86:ARG:HG3	3:D:322:ILE:HD12	1.42	1.01
1:A:6:PRO:HG2	2:B:9:ARG:NH1	1.75	1.01
1:A:745:LYS:HE2	2:C:99:ARG:HH22	1.24	1.01
1:A:847:LEU:CD2	2:C:325:THR:HG22	1.91	1.01
1:A:845:LYS:HD2	2:C:201:ASN:ND2	1.72	1.01
3:D:69:GLN:HG2	4:F:25:MET:CE	1.90	1.00
1:A:720:ARG:HH11	3:D:12:ARG:HD3	1.20	1.00
1:A:912:ILE:O	2:B:329:ASN:CB	2.09	1.00
3:D:69:GLN:HG2	4:F:25:MET:HE2	1.43	1.00
1:A:844:GLY:O	2:C:200:ILE:HG21	1.61	0.99
1:A:685:ASN:OD1	3:D:21:PHE:CZ	2.14	0.99
1:A:745:LYS:CE	2:C:99:ARG:HH22	1.75	0.99
1:A:908:HIS:HA	2:B:332:PHE:HD1	1.24	0.99
1:A:306:ARG:CZ	5:H:561:GLU:CB	2.41	0.99
1:A:912:ILE:CG2	2:B:329:ASN:HB2	1.93	0.98
1:A:720:ARG:HH12	3:D:12:ARG:CD	1.70	0.98
3:D:86:ARG:CG	3:D:322:ILE:HD11	1.94	0.97
1:A:898:MET:CB	2:C:330:ILE:HD13	1.85	0.97

Continued on next page...

Continued from previous page...

Atom-1	Atom-2	Interatomic distance (Å)	Clash overlap (Å)
3:D:70:PHE:CE1	4:F:26:THR:HG23	1.92	0.97
1:A:874:ARG:HH22	2:C:54:VAL:N	1.61	0.96
3:D:85:LEU:CD2	4:F:29:PHE:HD2	1.79	0.96
1:A:685:ASN:OD1	3:D:21:PHE:CE1	2.18	0.96
3:D:70:PHE:CE1	4:F:26:THR:HG21	2.01	0.96
1:A:908:HIS:HB2	2:B:332:PHE:HE1	1.23	0.96
1:A:913:ILE:CB	2:B:328:ILE:HD13	1.95	0.96
3:D:182:LEU:CD2	4:F:41:ALA:HB1	1.94	0.96
3:D:288:TYR:CB	3:D:297:VAL:CG1	2.43	0.95
2:B:60:TYR:CZ	2:C:11:ILE:HG21	2.01	0.95
2:B:275:ILE:CD1	2:B:276:THR:N	2.29	0.95
1:A:845:LYS:HA	2:C:201:ASN:HD21	1.29	0.95
1:A:602:TYR:OH	3:E:391:ASP:OD2	1.83	0.95
1:A:667:PHE:CZ	3:D:37:LEU:HD21	2.02	0.95
1:A:33:TYR:HE2	2:B:155:LYS:HZ2	1.01	0.95
1:A:1014:ASP:OD2	2:B:206:GLU:OE1	1.84	0.95
3:D:290:ASP:HB2	3:D:297:VAL:HG21	1.46	0.94
1:A:909:THR:CG2	2:B:331:LEU:HB3	1.97	0.94
3:D:86:ARG:CG	3:D:322:ILE:CD1	2.44	0.94
2:B:60:TYR:OH	2:C:11:ILE:CG2	2.16	0.93
1:A:908:HIS:HA	2:B:332:PHE:CD1	2.03	0.93
5:G:464:VAL:HA	5:I:429:GLY:HA3	1.48	0.93
1:A:919:TYR:O	5:H:19:LEU:O	1.73	0.93
5:I:478:TRP:HA	5:I:601:ILE:H	1.31	0.92
1:A:909:THR:HG23	2:B:331:LEU:HB2	1.49	0.92
1:A:1004:PHE:O	5:G:13:ASP:HA	1.68	0.92
2:B:275:ILE:HD12	2:B:276:THR:CA	1.99	0.92
1:A:997:SER:O	5:G:19:LEU:CA	2.18	0.92
1:A:912:ILE:HG23	2:B:329:ASN:CB	2.00	0.92
1:A:1028:VAL:HG23	2:C:7:ILE:HG22	1.52	0.92
1:A:685:ASN:ND2	3:D:21:PHE:HE1	1.58	0.91
2:B:275:ILE:HD11	2:B:278:PRO:HG3	1.53	0.91
1:A:602:TYR:HB2	3:E:356:ILE:HG21	1.52	0.91
3:D:86:ARG:HG3	3:D:322:ILE:HD11	1.51	0.91
1:A:898:MET:HG3	2:C:330:ILE:CD1	2.00	0.90
1:A:913:ILE:CB	2:B:327:GLU:O	2.20	0.90
3:D:512:SER:HB2	3:D:539:ARG:HB2	1.49	0.90
2:B:260:GLU:O	2:B:261:ALA:HB3	1.70	0.90
1:A:844:GLY:O	2:C:200:ILE:CG2	2.19	0.90
3:D:553:VAL:HG13	3:D:592:ILE:HG23	1.53	0.90
4:F:63:ILE:HG22	4:F:64:TYR:H	1.37	0.89

Continued on next page...

Continued from previous page...

Atom-1	Atom-2	Interatomic distance (Å)	Clash overlap (Å)
4:F:57:GLU:O	4:F:86:TRP:CH2	2.26	0.89
1:A:909:THR:CG2	2:B:331:LEU:CB	2.51	0.89
5:H:486:VAL:H	5:I:592:TYR:HA	1.37	0.89
1:A:679:TYR:HE2	3:D:20:ILE:CD1	1.62	0.89
1:A:900:ILE:HG22	2:C:311:TYR:CE1	2.07	0.89
2:B:274:ILE:O	2:B:275:ILE:HG22	1.73	0.88
1:A:306:ARG:NE	5:H:561:GLU:CB	2.36	0.88
1:A:667:PHE:HZ	3:D:60:LEU:HD21	1.29	0.88
1:A:436:THR:HG23	1:A:441:VAL:H	1.38	0.88
2:B:263:LEU:H	2:B:266:ASN:HD22	1.20	0.88
5:I:480:LEU:HA	5:I:598:TRP:HA	1.53	0.88
1:A:847:LEU:HD21	2:C:325:THR:CG2	2.02	0.88
1:A:847:LEU:HD21	2:C:325:THR:HG21	1.56	0.88
2:B:262:ALA:C	2:B:263:LEU:HD23	1.94	0.88
1:A:732:TYR:HD1	3:D:336:GLN:HE22	1.18	0.87
1:A:906:LEU:HD22	2:B:334:PHE:CB	2.04	0.87
1:A:911:THR:CG2	2:B:315:ARG:NH2	2.08	0.87
1:A:847:LEU:HD22	2:C:325:THR:CG2	2.03	0.87
3:D:182:LEU:HD21	4:F:41:ALA:CB	2.05	0.87
1:A:861:TYR:HE2	3:D:369:PRO:CG	1.87	0.87
1:A:885:PRO:HA	3:D:340:VAL:O	1.75	0.86
5:G:569:TYR:N	5:I:543:ILE:O	2.06	0.86
1:A:945:ASP:O	2:B:118:PRO:CB	2.23	0.86
1:A:874:ARG:NH2	2:C:54:VAL:CA	2.31	0.86
1:A:911:THR:HG23	2:B:315:ARG:HH22	0.69	0.86
4:F:63:ILE:O	4:F:66:ASN:ND2	2.08	0.86
1:A:679:TYR:CZ	3:D:20:ILE:HD11	1.86	0.85
1:A:886:VAL:O	3:D:364:THR:CB	2.24	0.85
5:I:430:TRP:O	5:I:432:ASN:N	2.10	0.85
1:A:667:PHE:CZ	3:D:37:LEU:CD2	2.59	0.85
2:B:57:ALA:HB2	2:C:7:ILE:CD1	2.07	0.85
1:A:679:TYR:HE2	3:D:20:ILE:HD11	1.15	0.85
1:A:874:ARG:NH2	2:C:53:GLU:O	2.10	0.84
1:A:1028:VAL:CG2	2:C:7:ILE:CG2	2.56	0.84
1:A:6:PRO:HG2	2:B:9:ARG:HH12	1.37	0.84
1:A:898:MET:HB3	2:C:330:ILE:CD1	2.05	0.84
1:A:911:THR:CB	2:B:330:ILE:HG22	2.08	0.84
1:A:1002:ALA:HA	5:H:20:ARG:O	1.77	0.84
2:B:282:LYS:NZ	2:B:303:MET:SD	2.51	0.84
1:A:643:PRO:HB2	4:F:84:TYR:CZ	2.12	0.84
2:B:47:TRP:CZ2	2:B:59:PRO:HD3	2.13	0.84

Continued on next page...

Continued from previous page...

Atom-1	Atom-2	Interatomic distance (Å)	Clash overlap (Å)
5:I:430:TRP:C	5:I:432:ASN:H	1.81	0.84
1:A:921:TRP:H	5:H:17:ASP:CB	1.90	0.83
2:B:263:LEU:H	2:B:266:ASN:ND2	1.77	0.83
4:F:126:TYR:HB3	4:F:129:ASN:HD22	1.44	0.83
2:B:262:ALA:O	2:B:263:LEU:HD23	1.78	0.83
2:B:275:ILE:CD1	2:B:276:THR:O	2.26	0.83
3:D:85:LEU:CD2	4:F:29:PHE:CD2	2.61	0.83
1:A:909:THR:HG22	2:B:331:LEU:O	1.77	0.83
1:A:1018:ASN:CB	2:B:91:PRO:CB	2.56	0.82
3:D:115:THR:HG22	3:D:298:ILE:CD1	2.07	0.82
1:A:874:ARG:HH22	2:C:53:GLU:C	1.83	0.82
1:A:908:HIS:HB2	2:B:332:PHE:CD1	2.13	0.82
1:A:907:LYS:O	1:A:908:HIS:ND1	2.12	0.82
2:C:234:ASP:HB3	2:C:236:PHE:HB2	1.61	0.82
1:A:909:THR:HG23	2:B:331:LEU:CB	2.08	0.82
1:A:909:THR:HG21	2:B:331:LEU:HB3	1.62	0.81
1:A:913:ILE:CG2	2:B:328:ILE:CD1	2.39	0.81
1:A:845:LYS:HD2	2:C:201:ASN:HD22	1.45	0.81
1:A:443:LEU:HD23	1:A:444:SER:H	1.44	0.81
1:A:913:ILE:HB	2:B:327:GLU:O	1.80	0.81
1:A:898:MET:HB2	2:C:330:ILE:HA	1.60	0.81
1:A:902:VAL:HG11	2:B:16:PHE:CZ	2.15	0.81
4:F:57:GLU:C	4:F:86:TRP:CZ3	2.54	0.81
5:G:34:TYR:O	5:G:38:GLY:N	2.13	0.81
1:A:908:HIS:CA	2:B:332:PHE:HD1	1.94	0.81
1:A:1002:ALA:CA	5:H:20:ARG:O	2.29	0.81
1:A:162:SER:C	3:E:154:ILE:HD11	2.00	0.81
1:A:663:ASN:CB	3:D:46:TYR:N	2.43	0.81
5:I:23:GLY:O	5:I:27:ASN:N	2.14	0.81
1:A:874:ARG:NH2	2:C:53:GLU:C	2.34	0.80
5:G:463:ALA:N	5:I:457:GLY:O	2.12	0.80
1:A:912:ILE:O	2:B:329:ASN:CA	2.29	0.80
2:B:60:TYR:CE1	2:C:11:ILE:HD13	2.17	0.80
3:D:182:LEU:HD21	4:F:41:ALA:HB1	1.62	0.80
2:C:135:ASP:OD1	2:C:150:LYS:NZ	2.11	0.80
1:A:908:HIS:CB	2:B:332:PHE:CE1	2.65	0.80
5:I:22:GLY:O	5:I:25:LYS:N	2.14	0.80
1:A:886:VAL:CG1	3:D:345:TYR:CE2	2.48	0.79
4:F:171:ILE:HG22	4:F:173:ALA:H	1.47	0.79
2:B:57:ALA:HB2	2:C:7:ILE:HD11	1.64	0.79
1:A:176:ILE:HG13	1:A:177:GLN:H	1.47	0.79

Continued on next page...

Continued from previous page...

Atom-1	Atom-2	Interatomic distance (Å)	Clash overlap (Å)
1:A:912:ILE:CG2	2:B:329:ASN:CB	2.60	0.79
1:A:179:SER:H	1:A:531:ARG:HA	1.48	0.79
1:A:671:TYR:CD1	3:D:60:LEU:HD13	2.17	0.79
1:A:124:GLN:HA	1:A:128:THR:HG22	1.65	0.78
1:A:568:ILE:HG13	1:A:618:PHE:HB3	1.65	0.78
1:A:689:LEU:HD12	3:D:75:VAL:CG1	2.12	0.78
1:A:161:SER:O	3:E:154:ILE:HD11	1.83	0.78
3:D:199:LEU:HD13	3:D:270:ILE:HG13	1.65	0.78
3:E:513:ASN:ND2	3:E:622:GLU:OE1	2.17	0.78
1:A:162:SER:OG	3:E:162:PHE:HD2	1.65	0.78
1:A:404:TYR:HA	1:A:415:ARG:HA	1.64	0.78
1:A:900:ILE:HG23	2:C:330:ILE:HD11	1.65	0.78
2:B:263:LEU:HB3	2:B:264:PRO:HD2	1.65	0.78
2:B:274:ILE:O	2:B:275:ILE:CG2	2.32	0.78
1:A:682:GLN:HE22	3:D:72:ASN:HB2	1.47	0.78
1:A:847:LEU:HD22	2:C:325:THR:HG22	1.61	0.77
3:D:358:GLN:OE1	3:D:453:GLU:OE2	2.01	0.77
2:B:60:TYR:CE1	2:C:11:ILE:HG21	2.18	0.77
3:D:86:ARG:HD2	3:D:322:ILE:CD1	2.11	0.77
3:D:212:LYS:HG2	3:D:215:VAL:HA	1.66	0.77
3:D:182:LEU:HD23	4:F:41:ALA:HB1	1.65	0.77
1:A:928:GLU:HG3	1:A:929:TYR:H	1.48	0.77
2:B:239:ILE:HD12	2:B:244:ALA:HB2	1.66	0.77
4:F:60:ALA:O	4:F:66:ASN:ND2	2.17	0.77
1:A:312:THR:HB	1:A:319:TYR:HB2	1.67	0.77
2:B:55:GLY:O	2:B:56:PHE:HD1	1.68	0.77
1:A:19:ASN:HD22	1:A:130:ASN:HB3	1.50	0.77
1:A:641:ALA:HB3	4:F:99:GLN:O	1.85	0.77
1:A:776:SER:OG	1:A:833:SER:O	2.03	0.77
1:A:337:ASP:O	1:A:344:THR:OG1	2.03	0.76
1:A:902:VAL:CB	2:B:16:PHE:HE2	1.98	0.76
1:A:995:ASP:O	5:I:12:ASP:C	2.23	0.76
1:A:1027:GLN:HA	2:C:6:VAL:O	1.86	0.76
1:A:667:PHE:HE1	3:D:37:LEU:HD23	0.61	0.76
1:A:745:LYS:HE2	2:C:99:ARG:NH2	2.00	0.76
1:A:745:LYS:CE	2:C:99:ARG:NH2	2.48	0.76
1:A:832:PRO:O	1:A:834:PHE:N	2.18	0.76
2:B:260:GLU:O	2:B:261:ALA:CB	2.33	0.76
1:A:902:VAL:CB	2:B:16:PHE:CE2	2.68	0.76
1:A:645:LEU:HD12	4:F:83:TYR:CD2	2.19	0.76
1:A:674:TYR:CD2	3:D:33:LEU:HD21	2.20	0.76

Continued on next page...

Continued from previous page...

Atom-1	Atom-2	Interatomic distance (Å)	Clash overlap (Å)
3:D:182:LEU:CD2	4:F:41:ALA:CB	2.61	0.76
2:B:60:TYR:CE1	2:C:11:ILE:CG2	2.69	0.76
4:F:9:ILE:HG22	4:F:10:GLU:H	1.51	0.76
5:G:516:ALA:HB1	5:H:595:VAL:HA	1.67	0.76
2:B:239:ILE:CD1	2:B:244:ALA:HB3	2.02	0.75
1:A:882:PHE:HE1	3:D:334:GLU:OE2	1.68	0.75
1:A:240:GLN:NE2	1:A:517:SER:OG	2.19	0.75
5:H:28:GLU:O	5:H:32:GLU:N	2.19	0.75
1:A:898:MET:HE1	2:C:272:ILE:HG12	1.69	0.75
3:D:87:SER:HB3	3:D:230:ILE:HG23	1.68	0.75
1:A:143:MET:HA	1:A:544:VAL:HA	1.68	0.75
1:A:897:THR:HG22	2:C:329:ASN:CG	2.07	0.75
1:A:1032:GLU:CB	2:B:60:TYR:HE2	1.95	0.75
1:A:897:THR:HG22	2:C:329:ASN:ND2	2.01	0.75
1:A:898:MET:CE	2:C:272:ILE:CG1	2.65	0.75
2:B:239:ILE:HD12	2:B:239:ILE:O	1.86	0.75
3:D:230:ILE:HG22	3:D:231:ASP:H	1.52	0.75
4:F:124:ILE:N	4:F:134:TYR:O	2.18	0.74
3:D:185:ILE:HD11	3:D:270:ILE:HD11	1.69	0.74
5:I:18:TYR:O	5:I:20:ARG:N	2.20	0.74
2:C:137:PRO:HD3	2:C:186:TYR:CD2	2.21	0.74
2:B:92:ARG:HD2	2:B:207:TYR:O	1.87	0.74
1:A:913:ILE:CA	2:B:327:GLU:O	2.35	0.74
3:E:452:VAL:HG12	3:E:640:ILE:HG21	1.67	0.74
2:B:114:CYS:HB2	2:B:120:ASN:HB2	1.69	0.74
1:A:142:ILE:HG22	1:A:143:MET:H	1.52	0.74
2:B:273:SER:OG	2:B:274:ILE:N	2.19	0.74
3:D:70:PHE:CD1	4:F:26:THR:CG2	2.71	0.74
3:E:539:ARG:HH21	3:E:580:LEU:HB2	1.52	0.73
5:G:43:PRO:O	5:G:47:GLY:N	2.21	0.73
1:A:639:GLY:O	4:F:103:ASN:ND2	2.21	0.73
1:A:902:VAL:HG11	2:B:16:PHE:CE2	2.22	0.73
2:B:275:ILE:HD12	2:B:276:THR:C	2.08	0.73
3:D:208:ASN:HA	3:D:224:TYR:H	1.52	0.73
1:A:898:MET:CG	2:C:330:ILE:CD1	2.49	0.73
1:A:720:ARG:HH12	3:D:12:ARG:HD3	0.90	0.73
3:D:151:VAL:HG12	3:D:152:ILE:H	1.53	0.73
2:C:108:ILE:HD11	2:C:160:TRP:H	1.54	0.73
3:E:370:GLY:HA2	3:E:404:ILE:HG22	1.70	0.73
5:G:107:VAL:O	5:G:110:VAL:N	2.17	0.73
1:A:908:HIS:HA	2:B:332:PHE:HA	1.70	0.73

Continued on next page...

Continued from previous page...

Atom-1	Atom-2	Interatomic distance (Å)	Clash overlap (Å)
1:A:1026:THR:O	2:C:5:SER:CB	2.36	0.73
2:B:19:GLU:OE2	2:C:35:ASN:ND2	2.21	0.73
1:A:898:MET:SD	2:C:272:ILE:CD1	2.69	0.72
1:A:908:HIS:CB	2:B:332:PHE:CD1	2.72	0.72
3:D:401:LEU:HD13	3:D:403:PRO:HD2	1.69	0.72
4:F:57:GLU:HA	4:F:86:TRP:CE3	2.24	0.72
1:A:831:LEU:O	1:A:833:SER:OG	2.08	0.72
3:E:465:LEU:HA	3:E:468:VAL:HG12	1.71	0.72
3:E:536:TYR:HE2	3:E:557:PRO:HG2	1.53	0.72
1:A:208:VAL:HG23	5:H:555:CYS:CB	2.19	0.72
1:A:913:ILE:HG21	2:B:328:ILE:HD12	1.67	0.72
3:D:86:ARG:CD	3:D:322:ILE:CD1	2.63	0.72
5:G:481:PHE:N	5:G:597:ARG:O	2.23	0.72
1:A:997:SER:O	5:G:19:LEU:CB	2.35	0.72
1:A:1014:ASP:OD2	2:B:206:GLU:CD	2.27	0.72
3:D:511:GLU:OE2	3:D:539:ARG:NH1	2.23	0.72
1:A:682:GLN:NE2	3:D:72:ASN:HB2	2.04	0.72
1:A:896:LEU:HD12	2:C:328:ILE:O	1.90	0.72
2:B:265:GLY:O	2:B:267:LYS:NZ	2.20	0.72
1:A:27:ASP:O	1:A:34:TYR:OH	2.07	0.72
1:A:671:TYR:CE1	3:D:60:LEU:HD13	2.25	0.72
1:A:685:ASN:CG	3:D:21:PHE:HE1	1.81	0.72
2:C:123:GLU:OE1	2:C:173:ARG:NH2	2.22	0.72
3:D:85:LEU:HD21	4:F:29:PHE:HD2	1.54	0.71
3:D:512:SER:HA	3:D:540:ILE:HG13	1.70	0.71
2:B:25:TYR:CD1	2:B:86:LEU:HD11	2.24	0.71
4:F:77:ASN:HD21	4:F:169:ILE:HG22	1.55	0.71
5:G:574:ALA:HB3	5:I:537:THR:H	1.55	0.71
3:E:209:TRP:CH2	3:E:212:LYS:HD2	2.25	0.71
2:B:51:GLU:HG2	2:B:269:PHE:CE1	2.26	0.71
1:A:908:HIS:CA	2:B:332:PHE:CD1	2.72	0.71
2:B:275:ILE:HD11	2:B:278:PRO:CG	2.19	0.71
5:H:63:GLU:HA	5:H:89:TYR:HA	1.73	0.71
1:A:913:ILE:HA	2:B:327:GLU:O	1.91	0.70
2:B:47:TRP:HE1	2:B:58:PRO:HA	1.56	0.70
2:C:303:MET:HB3	2:C:306:SER:HB2	1.72	0.70
1:A:679:TYR:OH	3:D:20:ILE:HD11	1.73	0.70
5:G:462:ASN:N	5:G:596:TYR:O	2.23	0.70
1:A:355:MET:SD	1:A:413:TRP:NE1	2.64	0.70
5:H:494:ILE:O	5:H:500:ALA:HB1	1.92	0.70
2:B:144:ILE:HG22	2:B:160:TRP:HA	1.74	0.70

Continued on next page...

Continued from previous page...

Atom-1	Atom-2	Interatomic distance (Å)	Clash overlap (Å)
1:A:1027:GLN:NE2	2:C:8:TYR:CE2	2.59	0.70
1:A:906:LEU:HD21	2:B:334:PHE:CB	2.19	0.70
3:E:403:PRO:O	3:E:404:ILE:HG13	1.91	0.70
5:H:22:GLY:O	5:H:26:ILE:N	2.20	0.69
1:A:1027:GLN:CD	2:C:8:TYR:CE2	2.66	0.69
1:A:233:LEU:HD11	1:A:366:TYR:HA	1.75	0.69
4:F:81:ASP:OD2	4:F:84:TYR:N	2.24	0.69
1:A:15:LYS:HA	1:A:625:ASN:HB3	1.73	0.69
2:C:327:GLU:OE1	2:C:329:ASN:ND2	2.24	0.69
4:F:47:THR:HG23	4:F:171:ILE:HD12	1.74	0.69
5:G:486:VAL:HA	5:I:488:VAL:HA	1.74	0.69
5:H:415:ASP:HA	5:H:440:GLN:HA	1.74	0.69
1:A:645:LEU:CD1	4:F:83:TYR:CE2	2.70	0.69
3:E:220:THR:HG21	3:E:243:ILE:HD13	1.73	0.69
1:A:667:PHE:CE1	3:D:37:LEU:CG	2.75	0.68
2:B:11:ILE:O	2:B:12:VAL:HG12	1.93	0.68
2:B:115:ASN:HA	2:B:121:ALA:HA	1.75	0.68
1:A:678:GLY:O	1:A:684:ASN:ND2	2.27	0.68
2:B:179:THR:OG1	2:B:189:GLU:HA	1.94	0.68
1:A:936:LEU:HG	1:A:937:THR:H	1.58	0.68
1:A:162:SER:O	3:E:154:ILE:CG1	2.42	0.68
2:B:273:SER:C	2:B:274:ILE:HG13	2.14	0.68
3:E:563:VAL:HG12	3:E:611:LEU:HD21	1.76	0.68
1:A:162:SER:O	3:E:154:ILE:HD11	1.91	0.68
1:A:180:ILE:HG22	1:A:181:GLN:H	1.58	0.68
1:A:715:LEU:O	3:D:9:GLN:CB	2.41	0.68
4:F:15:THR:HG23	4:F:16:VAL:HG23	1.75	0.68
5:G:595:VAL:O	5:I:490:TRP:N	2.27	0.68
5:G:31:ASP:O	5:G:34:TYR:N	2.24	0.68
5:G:460:TYR:O	5:G:598:TRP:N	2.26	0.68
2:B:277:ASN:HA	2:B:291:LYS:HE3	1.75	0.68
5:I:19:LEU:C	5:I:21:LYS:H	1.96	0.68
1:A:170:GLU:OE2	1:A:541:TYR:OH	2.07	0.67
1:A:896:LEU:O	2:C:328:ILE:O	2.12	0.67
1:A:911:THR:HA	2:B:330:ILE:HA	1.75	0.67
1:A:714:TYR:OH	1:A:749:LYS:O	2.09	0.67
1:A:494:GLU:O	1:A:496:SER:N	2.28	0.67
1:A:720:ARG:HH12	3:D:12:ARG:HH11	1.42	0.67
2:C:135:ASP:HB3	2:C:187:VAL:HG11	1.76	0.67
5:G:22:GLY:O	5:G:26:ILE:N	2.27	0.67
1:A:643:PRO:HB2	4:F:84:TYR:CE2	2.30	0.67

Continued on next page...

Continued from previous page...

Atom-1	Atom-2	Interatomic distance (Å)	Clash overlap (Å)
2:B:115:ASN:OD1	2:B:122:THR:N	2.26	0.67
2:B:269:PHE:O	2:B:270:ARG:O	2.13	0.67
3:E:459:PHE:HD2	3:E:632:ILE:HD11	1.59	0.67
4:F:103:ASN:OD1	4:F:104:VAL:N	2.27	0.67
4:F:109:ILE:HA	4:F:154:ASP:HA	1.77	0.67
1:A:13:ILE:HD13	1:A:16:LEU:HD23	1.77	0.67
1:A:735:TYR:CE1	3:D:334:GLU:HA	2.30	0.67
1:A:1002:ALA:HA	5:H:20:ARG:C	2.15	0.67
3:D:623:LEU:HD12	3:D:624:TYR:H	1.60	0.67
4:F:49:TYR:HB2	4:F:171:ILE:HD11	1.77	0.67
5:H:530:ALA:O	5:I:584:THR:N	2.28	0.67
2:B:179:THR:HG21	2:B:190:TYR:H	1.59	0.66
2:B:281:ALA:HB2	2:B:301:ASP:HA	1.75	0.66
2:C:143:SER:OG	2:C:159:LYS:O	2.10	0.66
3:D:17:ILE:HD13	4:F:16:VAL:HG22	1.76	0.66
2:C:92:ARG:NH2	2:C:94:ASP:OD2	2.29	0.66
2:C:217:LYS:HB2	2:C:236:PHE:CZ	2.30	0.66
3:D:543:THR:OG1	3:D:551:GLY:O	2.13	0.66
1:A:720:ARG:HH11	3:D:12:ARG:CD	1.90	0.66
1:A:334:ALA:HB3	1:A:348:ARG:HD3	1.78	0.66
2:C:275:ILE:HG22	2:C:309:MET:HB3	1.77	0.66
5:G:594:THR:H	5:I:518:GLY:HA3	1.60	0.66
1:A:667:PHE:CE2	3:D:60:LEU:HD21	2.29	0.66
2:B:144:ILE:HG21	2:B:160:TRP:CD1	2.30	0.66
1:A:667:PHE:HE1	3:D:37:LEU:CG	2.05	0.66
1:A:1028:VAL:HG23	2:C:7:ILE:CG2	2.21	0.66
3:D:433:GLU:HG3	3:D:655:LEU:HD22	1.77	0.66
5:H:517:GLY:N	5:I:594:THR:O	2.28	0.66
2:B:132:ARG:HB3	2:B:190:TYR:HA	1.77	0.66
2:C:44:SER:O	2:C:270:ARG:NH1	2.29	0.66
1:A:1027:GLN:HB3	2:C:6:VAL:HG13	1.78	0.66
1:A:370:SER:HB2	1:A:375:VAL:HG12	1.78	0.66
1:A:689:LEU:CD1	3:D:75:VAL:CG1	2.49	0.66
2:B:122:THR:HG21	2:B:170:PRO:HG3	1.77	0.66
1:A:996:ALA:N	5:G:20:ARG:CB	2.59	0.65
2:B:275:ILE:HD13	2:B:276:THR:O	1.94	0.65
1:A:387:ASN:OD1	1:A:388:ALA:N	2.29	0.65
1:A:1002:ALA:N	5:H:20:ARG:O	2.29	0.65
3:E:85:LEU:HG	3:E:86:ARG:H	1.61	0.65
2:C:132:ARG:NH1	2:C:241:ARG:O	2.29	0.65
1:A:792:ARG:HD2	1:A:859:ARG:HH22	1.60	0.65

Continued on next page...

Continued from previous page...

Atom-1	Atom-2	Interatomic distance (Å)	Clash overlap (Å)
2:B:193:GLU:HG2	2:B:224:GLY:HA3	1.79	0.65
1:A:330:LYS:HB2	1:A:334:ALA:HB2	1.79	0.65
1:A:845:LYS:HA	2:C:201:ASN:ND2	2.07	0.65
1:A:913:ILE:HB	2:B:328:ILE:HD13	1.76	0.65
3:E:417:LYS:HB3	3:E:483:GLN:HB2	1.79	0.65
5:H:469:PRO:O	5:H:474:GLY:N	2.29	0.65
1:A:911:THR:OG1	2:B:329:ASN:O	2.14	0.65
3:D:433:GLU:HG2	3:D:434:GLN:H	1.62	0.65
3:E:420:LEU:HG	3:E:653:ILE:HG22	1.79	0.65
5:G:593:ILE:N	5:I:486:VAL:O	2.30	0.65
1:A:514:PHE:HA	1:A:525:TRP:HB2	1.79	0.65
2:B:275:ILE:CD1	2:B:276:THR:C	2.65	0.65
2:B:238:LEU:HD23	2:B:238:LEU:C	2.17	0.65
2:B:292:ALA:HB1	2:B:297:TYR:CE2	2.32	0.65
5:I:419:ASP:O	5:I:436:VAL:N	2.30	0.65
1:A:900:ILE:CG2	2:C:330:ILE:HD11	2.26	0.64
3:D:350:SER:O	3:D:354:GLY:N	2.30	0.64
3:E:319:PRO:HG2	3:E:324:ARG:HH21	1.62	0.64
5:G:34:TYR:O	5:G:37:LEU:N	2.29	0.64
1:A:712:ASN:HD21	1:A:720:ARG:HB2	1.62	0.64
3:D:86:ARG:NH1	3:D:86:ARG:HG2	2.12	0.64
5:H:520:GLY:O	5:I:592:TYR:N	2.30	0.64
5:I:479:LYS:N	5:I:599:ILE:O	2.30	0.64
3:D:429:LEU:HD13	3:D:432:SER:HA	1.80	0.64
3:E:413:TYR:CD1	3:E:641:VAL:HG11	2.33	0.64
3:E:413:TYR:HD1	3:E:641:VAL:HG11	1.61	0.64
5:G:589:ILE:O	5:I:521:GLY:HA3	1.97	0.64
1:A:717:ALA:H	3:D:9:GLN:HE21	1.43	0.64
1:A:408:HIS:CG	1:A:409:ASP:H	2.15	0.64
2:B:16:PHE:HB2	2:C:310:ILE:HB	1.80	0.64
2:B:90:ILE:O	2:B:207:TYR:HA	1.98	0.64
2:C:51:GLU:HA	2:C:56:PHE:CZ	2.33	0.64
5:I:430:TRP:C	5:I:432:ASN:N	2.49	0.64
1:A:886:VAL:HG11	3:D:345:TYR:HE2	0.66	0.63
2:B:108:ILE:HG23	2:B:109:ASN:H	1.62	0.63
1:A:911:THR:CB	2:B:330:ILE:HA	2.28	0.63
3:D:208:ASN:HB3	3:D:224:TYR:CE2	2.33	0.63
1:A:720:ARG:NH1	3:D:12:ARG:HB3	2.13	0.63
1:A:975:ASN:HA	1:A:980:GLY:HA2	1.80	0.63
2:B:60:TYR:HE1	2:C:11:ILE:CG2	2.11	0.63
2:B:87:ASP:HA	2:B:212:TRP:CH2	2.34	0.63

Continued on next page...

Continued from previous page...

Atom-1	Atom-2	Interatomic distance (Å)	Clash overlap (Å)
2:B:175:ASP:OD1	2:B:176:ALA:N	2.31	0.63
2:C:86:LEU:HD11	2:C:247:ILE:HG12	1.79	0.63
1:A:176:ILE:HG22	1:A:533:VAL:HG12	1.80	0.63
1:A:845:LYS:HD2	2:C:201:ASN:HD21	1.63	0.63
3:D:483:GLN:HG2	3:D:626:ASP:HB3	1.81	0.63
1:A:984:SER:C	1:A:986:ARG:H	2.00	0.63
2:B:60:TYR:CZ	2:C:11:ILE:CG2	2.78	0.63
2:B:275:ILE:HD12	2:B:275:ILE:C	2.14	0.63
3:D:562:ASP:O	3:D:563:VAL:HG13	1.98	0.63
4:F:57:GLU:C	4:F:86:TRP:HZ3	1.99	0.63
1:A:911:THR:HG21	2:B:315:ARG:HH22	1.53	0.63
4:F:76:CYS:SG	4:F:170:LYS:N	2.59	0.63
1:A:605:ARG:CB	3:E:387:VAL:CB	2.77	0.63
1:A:702:GLU:CB	3:D:79:PHE:CE1	2.82	0.63
4:F:57:GLU:O	4:F:86:TRP:HZ3	1.73	0.63
5:I:447:SER:O	5:I:451:ASP:N	2.25	0.63
1:A:717:ALA:CB	3:D:9:GLN:NE2	2.62	0.63
3:E:436:LEU:O	3:E:440:ILE:N	2.26	0.63
1:A:939:THR:HG21	5:G:16:GLY:HA2	1.81	0.62
2:C:42:GLY:HA2	2:C:76:MET:H	1.64	0.62
3:D:278:ALA:O	3:D:281:ASN:ND2	2.32	0.62
3:D:491:PHE:CG	3:D:492:TYR:N	2.67	0.62
4:F:167:ARG:O	4:F:168:GLN:HG3	1.99	0.62
1:A:171:ASN:O	1:A:172:GLU:HG2	1.98	0.62
2:B:4:SER:OG	2:B:6:VAL:O	2.17	0.62
5:G:414:VAL:O	5:G:441:ARG:N	2.31	0.62
5:G:507:ASP:N	5:G:511:ASN:O	2.24	0.62
1:A:499:GLU:O	1:A:500:THR:OG1	2.17	0.62
5:I:43:PRO:O	5:I:47:GLY:N	2.32	0.62
1:A:771:ILE:HD11	1:A:839:ILE:HD11	1.79	0.62
3:D:77:GLU:OE2	4:F:29:PHE:CE1	2.51	0.62
5:G:535:THR:O	5:H:576:THR:N	2.21	0.62
2:C:274:ILE:HG12	2:C:311:TYR:HB3	1.80	0.62
3:D:296:THR:OG1	3:D:298:ILE:HG13	1.99	0.62
1:A:902:VAL:CG1	2:B:16:PHE:CE2	2.83	0.62
1:A:306:ARG:CD	5:H:561:GLU:CB	2.77	0.62
1:A:1018:ASN:CB	2:B:91:PRO:CA	2.78	0.62
3:D:81:ARG:HD3	3:D:330:THR:HG21	1.82	0.62
3:E:534:VAL:HG22	3:E:535:LEU:H	1.64	0.62
3:E:566:ASN:OD1	3:E:567:GLU:N	2.33	0.62
1:A:306:ARG:HD3	5:H:561:GLU:CB	2.30	0.62

Continued on next page...

Continued from previous page...

Atom-1	Atom-2	Interatomic distance (Å)	Clash overlap (Å)
1:A:667:PHE:CE2	3:D:60:LEU:CD2	2.83	0.62
2:B:263:LEU:CB	2:B:264:PRO:HD2	2.29	0.62
2:C:279:LEU:N	2:C:306:SER:OG	2.19	0.62
2:B:238:LEU:HD12	2:B:241:ARG:NH2	2.14	0.62
2:B:43:ARG:HG2	2:B:45:GLU:H	1.65	0.61
2:B:95:TRP:CE3	2:B:169:PRO:HG2	2.35	0.61
3:D:30:LYS:HE3	3:D:34:ILE:HD11	1.81	0.61
3:D:501:TYR:OH	3:D:510:MET:SD	2.58	0.61
4:F:61:ASN:HA	4:F:66:ASN:HA	1.81	0.61
1:A:137:PHE:O	1:A:555:ARG:NH2	2.34	0.61
3:D:543:THR:HG22	3:D:578:ASN:HB2	1.80	0.61
1:A:679:TYR:CE2	3:D:20:ILE:CG1	2.81	0.61
1:A:1014:ASP:OD2	2:B:206:GLU:OE2	2.19	0.61
3:D:77:GLU:HA	3:D:83:ALA:HB2	1.81	0.61
5:G:482:GLY:O	5:I:489:GLY:HA3	2.01	0.61
1:A:373:ASP:O	1:A:374:LYS:HG3	2.00	0.61
3:D:110:ILE:HG22	3:D:303:ASN:HA	1.83	0.61
1:A:703:TYR:OH	1:A:725:ARG:NH2	2.34	0.61
1:A:863:VAL:HG12	1:A:889:GLY:HA3	1.82	0.61
1:A:713:ILE:CD1	2:B:5:SER:HB2	2.31	0.61
1:A:1027:GLN:CD	2:C:8:TYR:HE2	2.04	0.61
3:D:87:SER:HB3	3:D:230:ILE:CG2	2.31	0.61
3:D:595:ILE:HG13	3:D:602:ILE:HA	1.81	0.61
5:G:409:SER:N	5:H:444:ASN:O	2.32	0.61
1:A:897:THR:HA	2:C:329:ASN:HB2	1.83	0.60
3:D:297:VAL:O	3:D:297:VAL:HG12	2.01	0.60
1:A:326:VAL:HG12	1:A:354:THR:HG23	1.83	0.60
2:B:28:ILE:HD12	2:B:37:ILE:HD11	1.83	0.60
5:G:430:TRP:O	5:G:432:ASN:N	2.34	0.60
1:A:720:ARG:NH2	3:D:10:LEU:HA	2.16	0.60
1:A:904:LEU:O	1:A:905:THR:OG1	2.16	0.60
5:G:76:ARG:N	5:G:102:TRP:O	2.34	0.60
5:G:523:THR:O	5:G:588:ASN:N	2.35	0.60
1:A:75:LEU:N	1:A:102:THR:OG1	2.34	0.60
1:A:511:GLU:HA	1:A:514:PHE:CD2	2.36	0.60
1:A:747:LEU:HD22	1:A:883:VAL:HG21	1.83	0.60
5:G:421:ASN:N	5:G:434:GLU:O	2.34	0.60
3:E:106:ALA:H	3:E:169:GLN:HG2	1.66	0.60
1:A:772:VAL:HG12	1:A:838:ILE:HG12	1.82	0.60
3:E:107:GLN:HE21	3:E:196:GLN:HE21	1.48	0.60
1:A:995:ASP:CB	5:I:16:GLY:O	2.50	0.60

Continued on next page...

Continued from previous page...

Atom-1	Atom-2	Interatomic distance (Å)	Clash overlap (Å)
3:E:98:TYR:HE2	3:E:327:GLU:HB3	1.66	0.60
1:A:161:SER:C	3:E:156:ASP:CB	2.70	0.60
2:B:148:THR:OG1	2:B:153:CYS:SG	2.47	0.60
2:C:203:CYS:SG	2:C:209:VAL:HG12	2.42	0.60
5:H:541:VAL:O	5:I:572:ALA:N	2.31	0.60
1:A:948:THR:CA	2:B:118:PRO:CB	2.79	0.60
1:A:1028:VAL:HG22	2:C:7:ILE:CG2	2.22	0.60
2:C:54:VAL:HG11	3:D:10:LEU:HD21	1.83	0.60
3:D:86:ARG:O	3:D:89:VAL:N	2.35	0.60
3:E:415:PHE:HB2	3:E:485:VAL:HG13	1.84	0.60
1:A:689:LEU:HD13	3:D:75:VAL:CG1	2.23	0.60
2:C:92:ARG:HH21	2:C:94:ASP:CG	2.05	0.60
3:E:209:TRP:NE1	3:E:213:SER:O	2.35	0.60
1:A:882:PHE:HE1	3:D:334:GLU:CD	2.04	0.59
1:A:1032:GLU:HA	2:C:9:ARG:HH21	1.66	0.59
2:B:316:PRO:HG2	2:B:317:PRO:HD3	1.82	0.59
5:H:518:GLY:O	5:I:594:THR:N	2.35	0.59
1:A:844:GLY:O	2:C:200:ILE:HG23	2.02	0.59
2:B:35:ASN:HA	2:B:291:LYS:HZ1	1.68	0.59
2:B:194:ILE:HA	2:B:223:TRP:CZ3	2.38	0.59
2:B:89:VAL:HB	2:B:207:TYR:HB3	1.83	0.59
1:A:336:ILE:HG12	1:A:346:SER:HA	1.83	0.59
1:A:674:TYR:CE2	3:D:33:LEU:HD21	2.36	0.59
3:D:415:PHE:HB2	3:D:485:VAL:CG2	2.32	0.59
1:A:442:SER:HA	1:A:491:ILE:HG12	1.84	0.59
3:D:77:GLU:HA	3:D:83:ALA:CB	2.32	0.59
3:D:208:ASN:HB3	3:D:224:TYR:CZ	2.38	0.59
1:A:248:LEU:HD13	1:A:311:ILE:HG13	1.85	0.59
3:D:192:ILE:HG13	3:D:192:ILE:O	2.03	0.59
3:E:169:GLN:NE2	3:E:275:THR:OG1	2.35	0.59
3:E:595:ILE:HG12	3:E:602:ILE:HG23	1.83	0.59
4:F:154:ASP:OD1	4:F:155:THR:N	2.35	0.59
1:A:720:ARG:NH1	3:D:12:ARG:CG	2.66	0.59
2:B:275:ILE:CD1	2:B:276:THR:H	2.15	0.59
3:E:401:LEU:HG	3:E:402:ALA:HB2	1.83	0.59
1:A:641:ALA:CB	4:F:99:GLN:O	2.50	0.59
5:H:528:GLU:O	5:H:531:ASN:N	2.21	0.59
1:A:921:TRP:N	5:H:17:ASP:CB	2.63	0.59
1:A:583:SER:OG	1:A:604:VAL:N	2.36	0.58
2:C:90:ILE:HD12	2:C:111:ILE:HD12	1.84	0.58
5:H:69:ALA:O	5:H:71:ASN:N	2.36	0.58

Continued on next page...

Continued from previous page...

Atom-1	Atom-2	Interatomic distance (Å)	Clash overlap (Å)
5:H:532:LEU:H	5:I:583:PRO:CB	2.16	0.58
1:A:405:VAL:HG12	1:A:407:ASN:H	1.68	0.58
1:A:1031:ASP:OD1	1:A:1032:GLU:N	2.37	0.58
3:D:358:GLN:NE2	3:D:379:LYS:HA	2.19	0.58
5:H:541:VAL:HA	5:I:543:ILE:HA	1.85	0.58
2:C:167:MET:O	2:C:168:THR:HG22	2.03	0.58
3:E:199:LEU:HD11	3:E:206:TRP:HB2	1.83	0.58
5:H:414:VAL:O	5:H:441:ARG:N	2.36	0.58
1:A:900:ILE:HG23	2:C:330:ILE:CD1	2.31	0.58
1:A:945:ASP:C	2:B:118:PRO:CB	2.71	0.58
3:E:358:GLN:NE2	3:E:453:GLU:OE2	2.36	0.58
5:G:463:ALA:HB3	5:I:457:GLY:HA2	1.85	0.58
5:G:473:MET:HA	5:I:452:THR:O	2.04	0.58
3:D:24:GLY:HA3	3:D:29:ILE:HD11	1.85	0.58
1:A:6:PRO:HD2	1:A:32:PHE:CE2	2.39	0.58
1:A:679:TYR:HE2	3:D:20:ILE:CG1	2.15	0.58
1:A:684:ASN:OD1	1:A:688:ASN:ND2	2.37	0.58
4:F:71:TRP:C	4:F:73:LEU:H	2.06	0.58
1:A:717:ALA:HB2	3:D:9:GLN:NE2	2.18	0.58
1:A:165:ASN:H	3:E:154:ILE:HD13	1.68	0.58
2:B:275:ILE:CD1	2:B:278:PRO:HG3	2.29	0.58
5:H:502:ASN:HA	5:H:518:GLY:HA3	1.86	0.57
1:A:968:ASP:OD1	1:A:969:TYR:N	2.32	0.57
2:B:60:TYR:CE1	2:C:11:ILE:HG23	2.37	0.57
3:E:501:TYR:OH	3:E:510:MET:SD	2.60	0.57
1:A:161:SER:HB2	3:E:156:ASP:CB	2.30	0.57
1:A:898:MET:HE1	2:C:272:ILE:CG1	2.27	0.57
2:B:144:ILE:O	2:B:146:SER:N	2.31	0.57
3:D:440:ILE:HD11	3:D:468:VAL:HG13	1.87	0.57
3:D:503:ASN:HD21	3:D:632:ILE:HG23	1.70	0.57
2:C:202:ARG:HD3	2:C:209:VAL:HG21	1.85	0.57
5:G:70:ILE:HA	5:G:97:ASP:CB	2.35	0.57
1:A:403:ILE:HD12	1:A:405:VAL:H	1.70	0.57
3:D:415:PHE:HB2	3:D:485:VAL:HG22	1.87	0.57
4:F:87:ILE:HG21	4:F:167:ARG:HB3	1.87	0.57
1:A:301:PRO:HD2	1:A:304:VAL:HG22	1.85	0.57
3:E:536:TYR:CE2	3:E:557:PRO:HG2	2.38	0.57
1:A:200:TYR:OH	1:A:259:SER:O	2.20	0.57
1:A:914:ASN:HB3	1:A:1011:ARG:HG3	1.87	0.57
3:D:127:ARG:NH1	3:D:148:ARG:O	2.38	0.57
4:F:6:PHE:HE2	4:F:32:TYR:HE1	1.52	0.57

Continued on next page...

Continued from previous page...

Atom-1	Atom-2	Interatomic distance (Å)	Clash overlap (Å)
1:A:6:PRO:CG	2:B:9:ARG:NH1	2.61	0.57
1:A:146:LEU:HB3	1:A:168:ILE:HD12	1.86	0.57
1:A:162:SER:O	3:E:154:ILE:CD1	2.53	0.57
1:A:909:THR:HG22	2:B:331:LEU:C	2.24	0.57
3:D:69:GLN:HE22	4:F:23:ILE:HB	1.70	0.57
3:E:553:VAL:HG13	3:E:592:ILE:HB	1.85	0.57
5:I:19:LEU:C	5:I:21:LYS:N	2.58	0.57
1:A:715:LEU:O	3:D:9:GLN:HB3	2.03	0.57
1:A:732:TYR:HD1	3:D:336:GLN:NE2	1.95	0.57
1:A:910:GLU:O	2:B:331:LEU:HD13	2.04	0.57
3:E:540:ILE:HG22	3:E:555:ILE:HD12	1.87	0.57
5:H:33:LEU:O	5:H:36:GLU:N	2.34	0.57
1:A:163:ILE:HD11	1:A:587:PHE:CZ	2.39	0.56
3:D:170:GLY:HA3	3:D:275:THR:H	1.70	0.56
3:E:374:ILE:HD11	3:E:408:ILE:HG12	1.87	0.56
3:E:220:THR:HG23	3:E:260:LEU:HD13	1.87	0.56
1:A:144:ALA:O	1:A:542:THR:HA	2.06	0.56
1:A:689:LEU:O	1:A:690:ILE:HG22	2.05	0.56
1:A:886:VAL:HG13	3:D:372:ALA:HB2	1.86	0.56
1:A:902:VAL:CG2	2:B:16:PHE:CD2	2.68	0.56
2:C:178:GLY:HA3	2:C:187:VAL:H	1.68	0.56
3:D:85:LEU:HD23	4:F:29:PHE:CD2	2.39	0.56
3:D:263:THR:O	3:D:265:ASN:N	2.28	0.56
3:D:634:THR:OG1	3:D:638:SER:O	2.22	0.56
1:A:602:TYR:CB	3:E:356:ILE:HG21	2.31	0.56
3:D:506:LYS:HE3	3:D:628:THR:HA	1.88	0.56
1:A:898:MET:CG	2:C:330:ILE:HB	2.35	0.56
1:A:919:TYR:OH	1:A:1005:ARG:HD2	2.05	0.56
2:C:136:VAL:O	2:C:150:LYS:NZ	2.35	0.56
2:C:275:ILE:HA	2:C:309:MET:HA	1.87	0.56
1:A:201:LEU:HD11	1:A:210:LYS:HB2	1.88	0.56
1:A:401:LYS:O	1:A:415:ARG:NH2	2.38	0.56
2:B:26:ASN:ND2	2:C:33:ASP:O	2.38	0.56
3:D:298:ILE:HG22	3:D:298:ILE:O	2.04	0.56
1:A:162:SER:N	3:E:156:ASP:CB	2.69	0.56
1:A:911:THR:C	2:B:329:ASN:O	2.41	0.56
1:A:400:ASP:O	1:A:415:ARG:NE	2.36	0.56
1:A:680:GLY:HA2	3:D:20:ILE:HG23	1.88	0.56
1:A:735:TYR:CD1	3:D:334:GLU:HA	2.41	0.56
2:C:135:ASP:OD1	2:C:136:VAL:N	2.33	0.56
3:D:360:VAL:HG23	3:D:361:GLN:H	1.71	0.56

Continued on next page...

Continued from previous page...

Atom-1	Atom-2	Interatomic distance (Å)	Clash overlap (Å)
1:A:370:SER:OG	1:A:374:LYS:O	2.12	0.56
1:A:643:PRO:CB	4:F:84:TYR:CZ	2.89	0.56
2:B:144:ILE:O	2:B:144:ILE:HG13	2.05	0.56
2:C:217:LYS:N	2:C:236:PHE:HZ	2.03	0.56
3:D:325:ILE:O	3:D:329:GLY:N	2.38	0.56
3:E:536:TYR:OH	3:E:582:ASN:ND2	2.39	0.56
1:A:379:ILE:HD11	1:A:401:LYS:HA	1.88	0.55
3:D:630:ASP:OD1	3:D:631:VAL:N	2.39	0.55
1:A:911:THR:CA	2:B:329:ASN:O	2.55	0.55
1:A:916:TYR:O	2:B:324:GLN:HA	2.06	0.55
2:B:292:ALA:HB1	2:B:297:TYR:HE2	1.71	0.55
3:D:382:LEU:HD23	3:D:646:LEU:HD23	1.87	0.55
4:F:114:ASN:OD1	4:F:115:GLU:N	2.39	0.55
2:C:170:PRO:HG3	2:C:188:TRP:CD2	2.41	0.55
2:C:42:GLY:HA3	2:C:75:MET:HA	1.88	0.55
3:D:86:ARG:CG	3:D:86:ARG:HH11	2.18	0.55
3:D:424:TYR:HE2	3:D:655:LEU:HB3	1.71	0.55
3:E:263:THR:OG1	3:E:266:SER:OG	2.24	0.55
5:I:43:PRO:O	5:I:46:ALA:N	2.38	0.55
1:A:909:THR:CG2	2:B:331:LEU:O	2.51	0.55
2:B:72:TRP:HA	2:B:75:MET:HG2	1.88	0.55
3:D:39:GLY:O	3:D:41:ASN:N	2.40	0.55
4:F:112:HIS:HA	4:F:152:ALA:HA	1.87	0.55
2:B:318:ILE:HG12	2:B:319:ILE:H	1.71	0.55
5:H:421:ASN:O	5:H:434:GLU:N	2.36	0.55
1:A:8:VAL:HA	1:A:28:VAL:HG21	1.89	0.55
1:A:913:ILE:CG2	2:B:327:GLU:O	2.47	0.55
3:E:177:ILE:HG13	3:E:178:ILE:H	1.71	0.55
1:A:708:ILE:HD12	1:A:727:PHE:CE2	2.42	0.55
2:C:81:VAL:HG23	2:C:249:PHE:HE1	1.71	0.55
2:C:281:ALA:HB2	2:C:301:ASP:HA	1.88	0.55
3:D:290:ASP:HB2	3:D:297:VAL:CG2	2.29	0.55
3:D:495:PRO:HG2	3:D:498:GLY:HA3	1.89	0.55
3:E:554:ILE:HD13	3:E:589:TYR:CG	2.41	0.55
1:A:798:ILE:HD12	1:A:811:VAL:HG12	1.89	0.55
2:B:94:ASP:HB3	2:B:113:VAL:CG2	2.36	0.55
2:B:273:SER:OG	2:B:274:ILE:O	2.25	0.55
2:B:273:SER:O	2:B:274:ILE:HG13	2.07	0.55
5:I:528:GLU:O	5:I:531:ASN:N	2.36	0.55
2:C:41:PHE:HD1	2:C:272:ILE:HG22	1.72	0.55
3:E:554:ILE:HB	3:E:589:TYR:HB3	1.89	0.55

Continued on next page...

Continued from previous page...

Atom-1	Atom-2	Interatomic distance (Å)	Clash overlap (Å)
5:G:461:GLU:HA	5:G:598:TRP:H	1.70	0.55
5:H:516:ALA:HB1	5:I:595:VAL:HA	1.87	0.55
1:A:934:ALA:HB2	1:A:954:GLU:H	1.72	0.54
5:G:518:GLY:N	5:H:594:THR:O	2.22	0.54
1:A:13:ILE:HG23	1:A:97:THR:HG21	1.88	0.54
1:A:676:SER:HA	1:A:683:TYR:HB3	1.89	0.54
2:B:253:LEU:HB2	2:B:326:GLU:HB2	1.90	0.54
3:D:499:ILE:HG23	3:D:602:ILE:HB	1.89	0.54
2:B:169:PRO:N	2:B:170:PRO:HD2	2.23	0.54
2:C:228:ASN:HB3	2:C:230:THR:HG23	1.88	0.54
3:E:136:LYS:HG2	3:E:137:ASP:H	1.72	0.54
5:H:531:ASN:HA	5:I:584:THR:H	1.72	0.54
1:A:545:ILE:HG12	1:A:573:VAL:HG22	1.90	0.54
2:C:37:ILE:O	2:C:81:VAL:HG12	2.07	0.54
2:C:148:THR:HG23	2:C:149:ASP:H	1.73	0.54
3:D:501:TYR:N	3:D:600:ASP:OD2	2.27	0.54
1:A:683:TYR:CE1	4:F:83:TYR:HD2	2.26	0.54
1:A:909:THR:O	1:A:1029:LYS:NZ	2.40	0.54
1:A:976:SER:N	1:A:979:GLN:O	2.38	0.54
1:A:614:PRO:HB2	1:A:617:VAL:CG1	2.37	0.54
5:G:461:GLU:HA	5:G:597:ARG:HA	1.89	0.54
1:A:78:TYR:CD1	1:A:101:GLU:HA	2.42	0.54
1:A:494:GLU:C	1:A:496:SER:H	2.10	0.54
1:A:600:PHE:CE1	1:A:608:VAL:HG21	2.42	0.54
3:D:571:PRO:HB3	3:D:590:TYR:CD1	2.43	0.54
2:B:46:PRO:O	2:B:269:PHE:CZ	2.59	0.54
3:E:208:ASN:HA	3:E:224:TYR:CE2	2.43	0.54
1:A:176:ILE:HG13	1:A:177:GLN:N	2.20	0.54
1:A:511:GLU:HA	1:A:514:PHE:HD2	1.72	0.54
1:A:845:LYS:CA	2:C:201:ASN:HD21	2.11	0.54
3:E:366:SER:O	3:E:367:THR:OG1	2.25	0.54
1:A:160:VAL:HG21	1:A:589:LYS:HE3	1.89	0.54
1:A:774:SER:O	1:A:809:TRP:HZ3	1.90	0.54
2:B:248:ARG:HB3	2:B:331:LEU:HG	1.90	0.54
3:D:70:PHE:CD1	4:F:26:THR:HG22	2.43	0.54
3:D:103:LYS:HE2	3:D:277:GLY:HA2	1.88	0.54
5:H:470:VAL:O	5:H:474:GLY:HA2	2.07	0.54
1:A:41:THR:OG1	1:A:42:LYS:N	2.41	0.53
2:B:92:ARG:HG3	2:B:92:ARG:O	2.08	0.53
3:E:89:VAL:O	3:E:93:ALA:N	2.39	0.53
4:F:28:ILE:HG23	4:F:29:PHE:CE1	2.42	0.53

Continued on next page...

Continued from previous page...

Atom-1	Atom-2	Interatomic distance (Å)	Clash overlap (Å)
1:A:38:ILE:HD13	1:A:80:ILE:HG22	1.91	0.53
1:A:520:SER:O	1:A:522:THR:HG23	2.08	0.53
1:A:820:LEU:HD13	1:A:838:ILE:HD13	1.89	0.53
2:C:40:THR:HG22	2:C:78:THR:HG22	1.90	0.53
2:C:142:CYS:SG	2:C:161:THR:N	2.75	0.53
3:D:230:ILE:O	3:D:232:GLY:N	2.40	0.53
5:H:421:ASN:N	5:H:434:GLU:O	2.33	0.53
5:I:25:LYS:O	5:I:28:GLU:N	2.39	0.53
1:A:314:THR:HG22	1:A:315:ASP:H	1.72	0.53
1:A:911:THR:CA	2:B:330:ILE:HA	2.39	0.53
3:D:192:ILE:HG22	3:D:272:TYR:CD1	2.43	0.53
4:F:48:TYR:HE1	4:F:170:LYS:HE3	1.73	0.53
1:A:146:LEU:HD11	1:A:575:PHE:CZ	2.43	0.53
2:B:144:ILE:HD11	2:B:153:CYS:HB3	1.90	0.53
2:C:151:ASP:OD1	2:C:152:GLU:N	2.42	0.53
3:D:151:VAL:O	3:D:152:ILE:HG12	2.08	0.53
1:A:1018:ASN:CB	2:B:91:PRO:HA	2.39	0.53
2:B:204:THR:HG22	2:B:205:ASN:H	1.74	0.53
2:C:42:GLY:CA	2:C:76:MET:H	2.21	0.53
3:D:26:PHE:O	3:D:29:ILE:N	2.33	0.53
5:G:477:SER:O	5:G:601:ILE:N	2.39	0.53
5:H:80:ASN:CB	5:H:111:ALA:HA	2.38	0.53
1:A:437:ASP:CB	1:A:440:LEU:HD12	2.39	0.53
1:A:490:PHE:O	1:A:501:PHE:HB3	2.08	0.53
1:A:945:ASP:HA	2:B:118:PRO:CB	2.38	0.53
2:B:20:LYS:HD2	2:C:20:LYS:HD3	1.89	0.53
2:B:154:LEU:HB3	2:B:160:TRP:NE1	2.24	0.53
3:D:563:VAL:HG11	3:D:590:TYR:CZ	2.43	0.53
3:E:112:LEU:HB3	3:E:163:PRO:HG2	1.90	0.53
3:E:375:ALA:HB1	3:E:411:PRO:HG3	1.88	0.53
1:A:710:LYS:O	3:D:12:ARG:NH2	2.42	0.53
2:C:51:GLU:O	2:C:52:ASN:HB2	2.09	0.53
2:C:184:ASP:OD1	2:C:185:GLY:N	2.40	0.53
3:E:512:SER:CB	3:E:624:TYR:H	2.21	0.53
1:A:777:LEU:HD22	1:A:809:TRP:CD2	2.44	0.53
2:C:70:ASP:OD1	2:C:71:MET:N	2.42	0.53
1:A:155:PRO:HG3	3:E:306:ASP:CB	2.39	0.53
1:A:326:VAL:HG11	1:A:355:MET:HG2	1.91	0.53
1:A:569:VAL:HG23	1:A:616:GLU:O	2.09	0.53
2:C:178:GLY:H	2:C:187:VAL:HA	1.74	0.53
2:C:198:VAL:HG22	2:C:202:ARG:HB3	1.90	0.53

Continued on next page...

Continued from previous page...

Atom-1	Atom-2	Interatomic distance (Å)	Clash overlap (Å)
3:E:53:LEU:O	3:E:57:CYS:N	2.42	0.53
3:E:54:ASN:O	3:E:58:ASP:N	2.41	0.53
1:A:479:TRP:CD1	1:A:505:PRO:HG3	2.43	0.52
2:B:93:ARG:NH2	2:B:102:ASP:O	2.42	0.52
3:D:517:PHE:CE2	3:D:538:VAL:HB	2.43	0.52
4:F:59:LEU:HD13	4:F:63:ILE:HD13	1.90	0.52
1:A:210:LYS:HG2	1:A:221:ALA:HA	1.90	0.52
3:D:83:ALA:O	3:D:326:ARG:NH2	2.42	0.52
3:D:131:PHE:HB2	3:D:145:PHE:HB2	1.91	0.52
5:H:35:TYR:HA	5:H:38:GLY:HA3	1.91	0.52
5:H:485:LYS:HA	5:I:591:PRO:O	2.09	0.52
5:I:478:TRP:HA	5:I:601:ILE:N	2.13	0.52
1:A:714:TYR:HE2	1:A:723:VAL:HG21	1.74	0.52
1:A:770:ILE:HD12	1:A:813:ILE:HG21	1.91	0.52
1:A:869:ASN:OD1	1:A:870:LEU:N	2.39	0.52
2:B:180:ILE:CD1	2:B:182:PRO:HD3	2.38	0.52
2:C:53:GLU:OE1	2:C:53:GLU:N	2.43	0.52
1:A:912:ILE:H	2:B:329:ASN:C	2.01	0.52
2:C:79:VAL:HB	2:C:256:VAL:HA	1.91	0.52
3:D:414:LEU:HD11	3:D:484:MET:HB3	1.92	0.52
3:D:492:TYR:HA	3:D:606:ILE:HD13	1.90	0.52
4:F:63:ILE:HG22	4:F:64:TYR:N	2.16	0.52
1:A:912:ILE:C	2:B:329:ASN:HB2	2.25	0.52
2:B:56:PHE:CD1	2:B:56:PHE:C	2.82	0.52
2:B:132:ARG:CB	2:B:190:TYR:HA	2.40	0.52
1:A:717:ALA:H	3:D:9:GLN:NE2	2.07	0.52
1:A:906:LEU:HD23	2:B:334:PHE:CB	2.35	0.52
2:C:138:ASP:O	2:C:139:THR:OG1	2.26	0.52
3:D:227:ARG:HG3	3:D:228:GLU:H	1.75	0.52
1:A:436:THR:HG23	1:A:441:VAL:N	2.18	0.52
1:A:872:SER:HA	1:A:875:TRP:NE1	2.25	0.52
3:E:388:GLN:O	3:E:392:ILE:HG12	2.09	0.52
1:A:36:VAL:HG11	1:A:67:PHE:CZ	2.45	0.52
1:A:160:VAL:HG11	1:A:589:LYS:NZ	2.25	0.52
2:C:70:ASP:O	2:C:73:THR:OG1	2.18	0.52
2:C:211:PRO:HG3	2:C:223:TRP:CE3	2.45	0.52
3:D:171:ARG:O	3:D:172:ILE:HG23	2.10	0.52
3:D:553:VAL:HB	3:D:595:ILE:HD13	1.92	0.52
3:E:81:ARG:HD2	3:E:325:ILE:CG2	2.39	0.52
3:E:459:PHE:CD2	3:E:632:ILE:HD11	2.44	0.52
1:A:160:VAL:H	1:A:592:GLY:HA2	1.74	0.52

Continued on next page...

Continued from previous page...

Atom-1	Atom-2	Interatomic distance (Å)	Clash overlap (Å)
1:A:415:ARG:NH1	1:A:418:GLY:O	2.43	0.52
2:B:238:LEU:HD23	2:B:238:LEU:O	2.10	0.52
2:B:318:ILE:HG23	2:B:319:ILE:N	2.24	0.52
4:F:94:TYR:O	4:F:97:SER:OG	2.17	0.52
1:A:408:HIS:CG	1:A:409:ASP:N	2.78	0.52
2:B:128:TRP:O	2:B:194:ILE:HG23	2.10	0.52
2:B:138:ASP:HA	2:B:185:GLY:HA3	1.91	0.52
3:D:386:THR:O	3:D:387:VAL:HG22	2.09	0.52
3:D:555:ILE:HG22	3:D:590:TYR:HB2	1.92	0.52
1:A:178:GLY:HA3	1:A:532:ALA:H	1.74	0.51
1:A:585:MET:CB	1:A:598:TYR:H	2.23	0.51
1:A:943:GLU:H	1:A:951:ALA:HA	1.74	0.51
2:B:29:GLY:N	2:B:34:LYS:HB3	2.25	0.51
2:C:270:ARG:HG2	2:C:317:PRO:HA	1.92	0.51
1:A:705:TRP:CZ2	3:D:15:ASN:C	2.84	0.51
1:A:984:SER:C	1:A:986:ARG:N	2.63	0.51
2:B:51:GLU:HG2	2:B:269:PHE:HE1	1.73	0.51
2:C:40:THR:OG1	2:C:273:SER:O	2.15	0.51
2:C:79:VAL:HB	2:C:256:VAL:HG12	1.92	0.51
2:C:149:ASP:OD1	2:C:152:GLU:HB3	2.10	0.51
3:D:358:GLN:HG2	3:D:379:LYS:HG2	1.92	0.51
3:D:539:ARG:HH21	3:D:581:ALA:HA	1.75	0.51
5:G:595:VAL:O	5:I:489:GLY:HA2	2.11	0.51
1:A:168:ILE:HG22	1:A:541:TYR:CE2	2.45	0.51
1:A:913:ILE:CG1	2:B:328:ILE:HD13	2.40	0.51
2:B:204:THR:HG22	2:B:205:ASN:N	2.26	0.51
3:D:512:SER:CB	3:D:539:ARG:HB2	2.31	0.51
1:A:61:TYR:CG	2:B:156:LEU:HD22	2.45	0.51
1:A:221:ALA:HB3	5:I:562:SER:O	2.10	0.51
1:A:777:LEU:O	1:A:777:LEU:HD23	2.10	0.51
1:A:934:ALA:HB2	1:A:954:GLU:N	2.25	0.51
2:B:57:ALA:HB2	2:C:7:ILE:CG1	2.39	0.51
3:D:86:ARG:HG2	3:D:86:ARG:HH11	1.73	0.51
1:A:87:GLN:HA	2:B:155:LYS:O	2.09	0.51
1:A:770:ILE:HD13	1:A:820:LEU:HD11	1.92	0.51
2:B:95:TRP:CZ3	2:B:169:PRO:HG2	2.45	0.51
4:F:38:ARG:HD2	4:F:187:ILE:HG21	1.93	0.51
4:F:53:SER:C	4:F:55:ARG:H	2.13	0.51
1:A:696:ARG:HG3	1:A:729:SER:HB2	1.92	0.51
4:F:53:SER:O	4:F:55:ARG:N	2.35	0.51
5:G:106:PRO:O	5:G:111:ALA:HB2	2.09	0.51

Continued on next page...

Continued from previous page...

Atom-1	Atom-2	Interatomic distance (Å)	Clash overlap (Å)
1:A:745:LYS:HE3	2:C:99:ARG:NH2	2.25	0.51
1:A:882:PHE:CE1	3:D:334:GLU:OE2	2.57	0.51
1:A:942:ILE:HA	1:A:951:ALA:HB2	1.92	0.51
2:B:89:VAL:HA	2:B:208:ILE:O	2.11	0.51
2:C:37:ILE:HD12	2:C:276:THR:HG22	1.92	0.51
2:C:92:ARG:HD3	2:C:205:ASN:O	2.11	0.51
3:E:155:ARG:HB2	3:E:161:TYR:HE1	1.75	0.51
1:A:492:ALA:HB2	1:A:501:PHE:HA	1.92	0.51
2:B:130:VAL:O	2:B:132:ARG:N	2.44	0.51
2:C:97:ASP:O	2:C:103:PRO:HB3	2.10	0.51
3:E:174:ARG:NH2	3:E:269:VAL:HG21	2.26	0.51
3:D:298:ILE:HG22	3:D:300:ILE:CD1	2.40	0.51
3:D:518:ASN:OD1	3:D:519:SER:N	2.35	0.51
3:E:602:ILE:HG22	3:E:603:TYR:H	1.76	0.51
1:A:906:LEU:CD2	2:B:334:PHE:CA	2.88	0.51
1:A:912:ILE:HG22	2:B:329:ASN:CB	2.40	0.50
2:B:93:ARG:O	2:B:112:VAL:HA	2.11	0.50
2:C:135:ASP:HB3	2:C:187:VAL:CG1	2.41	0.50
2:B:271:GLN:O	2:B:272:ILE:HG13	2.11	0.50
2:C:297:TYR:HB3	2:C:302:LEU:HD11	1.93	0.50
3:D:105:ALA:HB1	3:D:169:GLN:HB3	1.92	0.50
3:D:350:SER:O	3:D:352:ARG:N	2.45	0.50
3:E:602:ILE:HG22	3:E:603:TYR:N	2.26	0.50
1:A:165:ASN:N	3:E:154:ILE:HD13	2.26	0.50
1:A:571:PRO:O	1:A:572:ASN:HB2	2.11	0.50
1:A:817:LEU:HA	1:A:845:LYS:HB3	1.94	0.50
2:B:111:ILE:HD13	2:B:133:CYS:HB3	1.92	0.50
2:B:180:ILE:HD12	2:B:182:PRO:HD3	1.93	0.50
2:B:211:PRO:HG2	2:B:216:LEU:HD11	1.92	0.50
3:D:188:TYR:CE1	4:F:190:LYS:HG3	2.47	0.50
3:D:503:ASN:ND2	3:D:632:ILE:HG23	2.27	0.50
3:E:113:THR:HG22	3:E:298:ILE:HD13	1.93	0.50
3:E:541:VAL:O	3:E:554:ILE:HG13	2.10	0.50
1:A:310:ALA:O	1:A:311:ILE:HG13	2.12	0.50
1:A:996:ALA:H	5:G:20:ARG:CB	2.24	0.50
2:C:131:TYR:HB3	2:C:188:TRP:HB3	1.92	0.50
3:D:151:VAL:HG12	3:D:152:ILE:N	2.24	0.50
3:D:194:ARG:HH21	3:D:234:THR:HG22	1.77	0.50
3:E:143:TYR:HE1	3:E:276:ASN:HD22	1.60	0.50
1:A:932:ARG:O	1:A:933:ILE:HB	2.12	0.50
2:B:220:PRO:O	2:B:221:THR:OG1	2.24	0.50

Continued on next page...

Continued from previous page...

Atom-1	Atom-2	Interatomic distance (Å)	Clash overlap (Å)
3:D:491:PHE:O	3:D:493:LYS:N	2.44	0.50
3:D:540:ILE:HG22	3:D:555:ILE:HA	1.94	0.50
3:E:90:VAL:HA	3:E:93:ALA:HB3	1.94	0.50
4:F:135:ASP:OD1	4:F:135:ASP:N	2.43	0.50
5:G:409:SER:O	5:H:445:ALA:HA	2.10	0.50
5:H:51:THR:C	5:H:69:ALA:HA	2.31	0.50
1:A:643:PRO:HB2	4:F:84:TYR:OH	2.11	0.50
1:A:770:ILE:HD11	1:A:842:VAL:HG12	1.93	0.50
2:B:87:ASP:HA	2:B:212:TRP:HH2	1.74	0.50
2:B:113:VAL:HA	2:B:130:VAL:HB	1.94	0.50
3:D:226:MET:HG2	3:D:236:PHE:CE1	2.46	0.50
3:D:386:THR:C	3:D:388:GLN:H	2.14	0.50
3:D:461:LYS:NZ	3:D:480:ALA:O	2.36	0.50
3:D:623:LEU:HD12	3:D:624:TYR:N	2.26	0.50
5:G:410:GLN:N	5:I:407:TYR:HA	2.26	0.50
1:A:679:TYR:HA	1:A:684:ASN:HD22	1.76	0.50
2:B:275:ILE:HD11	2:B:278:PRO:CD	2.42	0.50
3:D:135:ALA:HA	3:D:283:ALA:N	2.27	0.50
4:F:63:ILE:CG2	4:F:64:TYR:H	2.18	0.50
1:A:251:ASP:O	1:A:299:THR:OG1	2.27	0.50
2:B:263:LEU:N	2:B:266:ASN:ND2	2.55	0.50
2:C:253:LEU:O	2:C:256:VAL:HG22	2.11	0.50
3:E:493:LYS:O	3:E:494:THR:OG1	2.23	0.50
4:F:109:ILE:HG23	4:F:152:ALA:HB1	1.94	0.50
5:H:25:LYS:O	5:H:28:GLU:N	2.45	0.50
1:A:898:MET:HB3	2:C:330:ILE:HD13	1.74	0.50
2:C:247:ILE:HG22	2:C:332:PHE:HB2	1.94	0.50
2:C:281:ALA:N	2:C:301:ASP:O	2.45	0.50
3:D:370:GLY:HA2	3:D:404:ILE:HG22	1.94	0.50
3:D:442:ASP:O	3:D:446:ARG:N	2.37	0.50
5:G:430:TRP:C	5:G:432:ASN:H	2.15	0.50
5:I:87:ASN:HA	5:I:136:VAL:N	2.27	0.50
1:A:339:ASP:O	1:A:341:LEU:N	2.39	0.49
1:A:341:LEU:O	1:A:342:SER:OG	2.23	0.49
1:A:911:THR:OG1	2:B:330:ILE:HA	2.12	0.49
3:D:34:ILE:O	3:D:38:ASN:N	2.45	0.49
1:A:306:ARG:NH2	5:H:561:GLU:CB	2.75	0.49
1:A:626:GLN:OE1	1:A:626:GLN:N	2.44	0.49
1:A:139:ASN:C	1:A:555:ARG:HH12	2.14	0.49
1:A:708:ILE:HD12	1:A:727:PHE:CZ	2.47	0.49
2:B:45:GLU:CD	2:B:46:PRO:HD2	2.32	0.49

Continued on next page...

Continued from previous page...

Atom-1	Atom-2	Interatomic distance (Å)	Clash overlap (Å)
2:B:193:GLU:HB2	2:B:223:TRP:O	2.13	0.49
2:B:275:ILE:HD12	2:B:276:THR:H	1.60	0.49
3:D:298:ILE:HG22	3:D:300:ILE:HD12	1.93	0.49
3:E:71:GLY:O	3:E:75:VAL:HG23	2.11	0.49
3:E:469:ASP:HA	3:E:475:VAL:HG21	1.94	0.49
4:F:87:ILE:HD13	4:F:167:ARG:HB3	1.93	0.49
4:F:167:ARG:O	4:F:167:ARG:HG3	2.12	0.49
5:G:410:GLN:H	5:I:407:TYR:HA	1.77	0.49
5:G:464:VAL:CA	5:I:429:GLY:HA3	2.29	0.49
1:A:69:PHE:HE2	1:A:72:ALA:HB2	1.76	0.49
3:E:134:TYR:HE1	3:E:142:PRO:HG3	1.77	0.49
4:F:2:LEU:HB3	4:F:181:MET:HE1	1.95	0.49
5:I:51:THR:O	5:I:53:ASN:N	2.45	0.49
1:A:937:THR:O	1:A:939:THR:N	2.45	0.49
1:A:1027:GLN:NE2	2:C:8:TYR:HE2	2.06	0.49
2:B:70:ASP:OD1	2:B:71:MET:N	2.45	0.49
2:B:249:PHE:CE1	2:B:330:ILE:HD11	2.46	0.49
2:C:329:ASN:O	2:C:330:ILE:HG22	2.13	0.49
3:D:145:PHE:CG	3:D:167:LEU:HD13	2.46	0.49
3:E:179:TYR:HB2	3:E:268:ILE:CD1	2.41	0.49
5:I:19:LEU:O	5:I:21:LYS:N	2.45	0.49
1:A:404:TYR:HA	1:A:415:ARG:CA	2.40	0.49
2:C:152:GLU:HA	2:C:155:LYS:HG2	1.94	0.49
3:E:377:LYS:HD2	3:E:639:LEU:HD13	1.95	0.49
3:E:459:PHE:HZ	3:E:464:MET:SD	2.36	0.49
3:E:640:ILE:HG23	3:E:641:VAL:H	1.76	0.49
1:A:646:ARG:HD3	1:A:673:GLN:OE1	2.13	0.49
1:A:1007:LEU:HD23	1:A:1010:LYS:H	1.78	0.49
2:C:284:HIS:C	2:C:286:ASN:H	2.15	0.49
2:C:323:ASP:OD1	2:C:324:GLN:N	2.46	0.49
3:D:424:TYR:HE1	3:D:426:LEU:HD23	1.78	0.49
3:D:491:PHE:C	3:D:493:LYS:H	2.16	0.49
3:D:549:GLY:HA3	3:D:596:ASN:OD1	2.13	0.49
3:E:417:LYS:NZ	3:E:649:GLN:O	2.45	0.49
3:E:546:ASP:O	3:E:547:SER:OG	2.28	0.49
5:H:554:GLY:HA2	5:I:564:PRO:O	2.13	0.49
1:A:443:LEU:CD2	1:A:444:SER:H	2.21	0.49
3:D:513:ASN:HB2	3:D:622:GLU:O	2.13	0.49
3:E:106:ALA:HA	3:E:314:ASP:HA	1.94	0.49
3:E:517:PHE:HB3	3:E:536:TYR:HB3	1.93	0.49
4:F:162:GLU:O	4:F:165:LYS:HG2	2.12	0.49

Continued on next page...

Continued from previous page...

Atom-1	Atom-2	Interatomic distance (Å)	Clash overlap (Å)
5:H:548:GLY:HA3	5:I:569:TYR:HA	1.95	0.49
1:A:229:VAL:O	1:A:250:TYR:N	2.46	0.49
2:B:41:PHE:CG	2:B:42:GLY:N	2.80	0.49
2:B:221:THR:HA	2:B:224:GLY:HA2	1.95	0.49
3:E:606:ILE:O	3:E:609:ILE:HG22	2.13	0.49
5:I:61:THR:O	5:I:63:GLU:N	2.46	0.49
1:A:717:ALA:N	3:D:9:GLN:HE21	2.10	0.49
1:A:869:ASN:CG	1:A:870:LEU:H	2.17	0.49
2:B:57:ALA:HB2	2:C:7:ILE:HG13	1.95	0.49
2:B:196:PRO:O	2:B:199:SER:OG	2.14	0.49
3:E:229:THR:OG1	3:E:233:ASN:N	2.45	0.49
3:E:495:PRO:C	3:E:497:ALA:H	2.17	0.49
1:A:405:VAL:HG21	1:A:416:VAL:HG13	1.95	0.48
1:A:674:TYR:O	1:A:681:THR:OG1	2.18	0.48
1:A:712:ASN:HD21	1:A:720:ARG:CB	2.25	0.48
1:A:713:ILE:HD12	2:B:5:SER:HB2	1.95	0.48
1:A:936:LEU:HG	1:A:937:THR:N	2.28	0.48
5:G:488:VAL:HA	5:H:486:VAL:HA	1.95	0.48
1:A:303:ASN:OD1	1:A:304:VAL:HG13	2.12	0.48
1:A:326:VAL:HG21	1:A:355:MET:HE3	1.95	0.48
1:A:342:SER:HB2	1:A:343:PRO:HD2	1.94	0.48
3:D:189:ASP:O	3:D:191:ASN:N	2.45	0.48
3:E:485:VAL:HB	3:E:624:TYR:HD1	1.79	0.48
4:F:43:TYR:CE2	4:F:180:PHE:HA	2.48	0.48
1:A:379:ILE:HG12	1:A:404:TYR:CE2	2.48	0.48
1:A:440:LEU:HD23	1:A:493:ASP:OD2	2.12	0.48
1:A:898:MET:HG3	2:C:330:ILE:HB	1.94	0.48
2:B:60:TYR:HE1	2:C:11:ILE:HD13	1.77	0.48
2:B:93:ARG:NH2	2:B:102:ASP:HB3	2.28	0.48
2:C:106:PHE:CE1	2:C:112:VAL:HG11	2.48	0.48
2:C:247:ILE:CG2	2:C:332:PHE:HB2	2.43	0.48
3:D:135:ALA:HB3	3:D:143:TYR:CE2	2.48	0.48
3:D:472:ASP:CG	3:D:473:HIS:H	2.17	0.48
4:F:73:LEU:O	4:F:76:CYS:HB3	2.12	0.48
5:G:414:VAL:N	5:G:441:ARG:O	2.46	0.48
1:A:36:VAL:HG13	1:A:59:LEU:HB2	1.95	0.48
1:A:97:THR:O	1:A:99:GLU:N	2.47	0.48
1:A:105:THR:O	1:A:106:ASN:HB2	2.12	0.48
1:A:230:GLY:HA3	1:A:249:GLY:HA2	1.95	0.48
1:A:586:LEU:HD23	1:A:588:TYR:OH	2.13	0.48
1:A:848:LEU:HD12	1:A:849:GLN:HG2	1.95	0.48

Continued on next page...

Continued from previous page...

Atom-1	Atom-2	Interatomic distance (Å)	Clash overlap (Å)
2:C:90:ILE:HD12	2:C:111:ILE:CD1	2.43	0.48
3:D:69:GLN:CG	4:F:25:MET:CE	2.79	0.48
3:D:339:CYS:HB3	3:D:348:PHE:CD2	2.49	0.48
3:D:434:GLN:O	3:D:437:GLU:N	2.46	0.48
5:I:43:PRO:CB	5:I:65:GLY:HA3	2.43	0.48
1:A:241:SER:HA	1:A:518:LYS:HD3	1.95	0.48
1:A:252:LYS:HA	1:A:299:THR:OG1	2.13	0.48
1:A:575:PHE:HE2	1:A:586:LEU:HD11	1.78	0.48
1:A:577:GLY:H	1:A:607:THR:HG22	1.79	0.48
2:B:43:ARG:HB3	2:B:269:PHE:O	2.14	0.48
2:B:275:ILE:HD11	2:B:278:PRO:HD3	1.96	0.48
2:C:92:ARG:HB3	2:C:208:ILE:HG23	1.94	0.48
3:D:554:ILE:HG21	3:D:578:ASN:ND2	2.28	0.48
4:F:110:VAL:HG13	4:F:111:TYR:CD2	2.49	0.48
4:F:112:HIS:ND1	4:F:152:ALA:HB2	2.28	0.48
4:F:131:TYR:CE2	4:F:149:ALA:HB2	2.48	0.48
5:G:103:ASN:CB	5:G:123:PRO:HA	2.43	0.48
5:I:60:LEU:O	5:I:64:TRP:N	2.46	0.48
1:A:184:CYS:SG	1:A:185:LYS:N	2.86	0.48
1:A:362:LYS:O	1:A:383:VAL:HA	2.14	0.48
1:A:403:ILE:HD11	1:A:416:VAL:HG22	1.94	0.48
1:A:488:MET:HG2	1:A:489:ALA:N	2.29	0.48
1:A:757:GLU:HA	1:A:868:SER:CB	2.44	0.48
1:A:771:ILE:HD11	1:A:839:ILE:CD1	2.44	0.48
3:D:487:GLU:OE2	3:D:647:ARG:NH2	2.26	0.48
5:G:478:TRP:HA	5:G:601:ILE:H	1.78	0.48
5:H:86:VAL:C	5:H:88:ASP:H	2.17	0.48
1:A:317:TYR:HB3	1:A:330:LYS:HA	1.95	0.48
1:A:437:ASP:HA	1:A:516:TRP:CE3	2.49	0.48
4:F:57:GLU:HA	4:F:86:TRP:CZ3	2.48	0.48
5:I:22:GLY:O	5:I:23:GLY:C	2.51	0.48
3:D:143:TYR:HD1	3:D:276:ASN:HD22	1.60	0.48
3:D:420:LEU:O	3:D:653:ILE:HA	2.14	0.48
3:D:485:VAL:HG21	3:D:650:TYR:CZ	2.49	0.48
3:E:108:THR:HG22	3:E:109:GLU:N	2.29	0.48
3:E:556:GLY:O	3:E:589:TYR:HD1	1.97	0.48
2:B:279:LEU:HD23	2:B:289:ASN:HB2	1.96	0.48
3:E:112:LEU:HD21	3:E:297:VAL:HG22	1.94	0.48
5:G:101:THR:H	5:G:124:VAL:CB	2.27	0.48
1:A:1018:ASN:CA	2:B:91:PRO:HB3	2.41	0.48
2:C:260:GLU:CD	2:C:263:LEU:HB3	2.34	0.48

Continued on next page...

Continued from previous page...

Atom-1	Atom-2	Interatomic distance (Å)	Clash overlap (Å)
2:C:277:ASN:OD1	2:C:291:LYS:HE3	2.14	0.48
5:I:50:LYS:O	5:I:52:TYR:N	2.46	0.48
1:A:191:TYR:CD2	1:A:237:VAL:HG21	2.49	0.47
1:A:296:THR:HG22	1:A:348:ARG:HD2	1.95	0.47
1:A:404:TYR:O	1:A:413:TRP:HB3	2.14	0.47
2:B:129:LEU:H	2:B:130:VAL:HG23	1.79	0.47
2:C:155:LYS:HG3	2:C:156:LEU:HD13	1.96	0.47
3:E:110:ILE:HG22	3:E:302:GLU:HA	1.95	0.47
2:B:144:ILE:CG2	2:B:160:TRP:HA	2.43	0.47
2:C:37:ILE:HB	2:C:81:VAL:HG11	1.95	0.47
3:D:510:MET:SD	3:D:623:LEU:HD13	2.54	0.47
3:E:211:ARG:HG3	3:E:211:ARG:O	2.14	0.47
1:A:113:MET:HE3	1:A:613:LYS:H	1.78	0.47
1:A:140:ASP:O	1:A:555:ARG:NH2	2.47	0.47
1:A:146:LEU:HD21	1:A:575:PHE:CE1	2.49	0.47
1:A:635:GLU:CB	1:A:679:TYR:H	2.27	0.47
1:A:900:ILE:HG22	2:C:311:TYR:CD1	2.47	0.47
2:B:282:LYS:HE3	2:B:289:ASN:HB3	1.96	0.47
2:C:132:ARG:O	2:C:133:CYS:HB3	2.14	0.47
3:D:590:TYR:HB3	3:D:609:ILE:HG21	1.96	0.47
3:E:522:LYS:HB2	3:E:534:VAL:HG11	1.96	0.47
5:G:594:THR:O	5:I:516:ALA:HA	2.15	0.47
1:A:777:LEU:HD21	1:A:798:ILE:HD11	1.96	0.47
1:A:1027:GLN:CB	2:C:6:VAL:HG13	2.44	0.47
3:E:103:LYS:NZ	3:E:191:ASN:OD1	2.45	0.47
1:A:894:THR:O	2:C:326:GLU:CB	2.61	0.47
1:A:911:THR:OG1	2:B:330:ILE:CA	2.63	0.47
2:B:130:VAL:O	2:B:130:VAL:HG12	2.14	0.47
2:B:277:ASN:CA	2:B:291:LYS:HE3	2.44	0.47
2:C:193:GLU:HB3	2:C:224:GLY:HA3	1.96	0.47
3:E:51:SER:O	3:E:53:LEU:N	2.45	0.47
4:F:111:TYR:O	4:F:153:VAL:HG22	2.14	0.47
3:D:115:THR:O	3:D:296:THR:HG23	2.14	0.47
3:D:298:ILE:O	3:D:298:ILE:CG2	2.62	0.47
5:G:30:PHE:O	5:G:34:TYR:N	2.47	0.47
5:G:83:LYS:HA	5:G:137:TYR:CB	2.45	0.47
1:A:33:TYR:CZ	2:B:155:LYS:NZ	2.80	0.47
1:A:69:PHE:CE2	1:A:72:ALA:HB2	2.50	0.47
1:A:158:VAL:O	1:A:594:ILE:HG22	2.15	0.47
1:A:241:SER:O	1:A:244:THR:OG1	2.33	0.47
1:A:720:ARG:NH1	3:D:12:ARG:CB	2.77	0.47

Continued on next page...

Continued from previous page...

Atom-1	Atom-2	Interatomic distance (Å)	Clash overlap (Å)
1:A:720:ARG:HG3	1:A:721:ASP:N	2.29	0.47
2:B:151:ASP:HA	2:B:160:TRP:CH2	2.50	0.47
2:B:263:LEU:HD23	2:B:263:LEU:N	2.27	0.47
2:B:274:ILE:C	2:B:275:ILE:CG2	2.79	0.47
2:C:43:ARG:HH21	2:C:47:TRP:HB3	1.79	0.47
3:D:102:SER:H	3:D:194:ARG:NH1	2.13	0.47
3:E:87:SER:HA	3:E:90:VAL:HG12	1.95	0.47
3:E:356:ILE:HD12	3:E:357:ILE:HG12	1.96	0.47
3:E:550:ILE:HB	3:E:594:GLU:HB2	1.96	0.47
3:E:651:LEU:O	3:E:652:THR:OG1	2.28	0.47
5:H:95:ALA:HA	5:H:126:ILE:HA	1.95	0.47
1:A:883:VAL:HG12	1:A:884:HIS:N	2.29	0.47
2:B:42:GLY:O	2:B:76:MET:HE2	2.13	0.47
4:F:77:ASN:ND2	4:F:169:ILE:HG22	2.25	0.47
4:F:173:ALA:C	4:F:175:SER:H	2.17	0.47
5:H:503:ASN:H	5:H:519:THR:H	1.63	0.47
1:A:329:ILE:HG12	1:A:350:PHE:CD1	2.50	0.47
1:A:404:TYR:CE1	1:A:415:ARG:HD2	2.49	0.47
2:B:95:TRP:CE2	2:B:169:PRO:HB2	2.50	0.47
3:E:486:ARG:CD	3:E:501:TYR:HB3	2.44	0.47
1:A:720:ARG:HH22	3:D:10:LEU:HA	1.80	0.47
3:D:493:LYS:O	3:D:494:THR:OG1	2.26	0.47
3:E:179:TYR:OH	3:E:261:LYS:NZ	2.42	0.47
5:H:576:THR:HA	5:I:537:THR:HA	1.96	0.47
1:A:191:TYR:HB2	1:A:202:PHE:HB2	1.97	0.46
1:A:350:PHE:CD1	1:A:350:PHE:N	2.83	0.46
1:A:784:GLN:NE2	1:A:830:ARG:HB2	2.30	0.46
1:A:896:LEU:O	2:C:329:ASN:HB2	2.15	0.46
2:B:108:ILE:HG23	2:B:109:ASN:N	2.29	0.46
2:C:37:ILE:HB	2:C:81:VAL:CG1	2.45	0.46
3:D:546:ASP:HB3	3:D:550:ILE:CB	2.45	0.46
3:D:592:ILE:HD12	3:D:606:ILE:HG13	1.96	0.46
1:A:900:ILE:HG13	2:C:332:PHE:HA	1.96	0.46
1:A:993:LEU:HB3	5:I:17:ASP:CB	2.44	0.46
2:B:315:ARG:HG2	2:C:8:TYR:HB3	1.96	0.46
2:C:202:ARG:O	2:C:248:ARG:NH2	2.45	0.46
5:G:540:GLU:HA	5:H:572:ALA:O	2.15	0.46
1:A:417:PHE:HE2	1:A:427:ILE:HD11	1.80	0.46
1:A:482:ASP:CG	1:A:483:LYS:H	2.19	0.46
1:A:496:SER:OG	1:A:498:TRP:N	2.49	0.46
2:B:86:LEU:HB3	2:B:249:PHE:HB3	1.96	0.46

Continued on next page...

Continued from previous page...

Atom-1	Atom-2	Interatomic distance (Å)	Clash overlap (Å)
2:B:234:ASP:O	2:B:235:ASP:O	2.34	0.46
2:B:278:PRO:O	2:B:279:LEU:HD12	2.15	0.46
2:C:137:PRO:HD3	2:C:186:TYR:CE2	2.50	0.46
3:E:179:TYR:HB2	3:E:268:ILE:HD12	1.96	0.46
3:E:394:ASN:C	3:E:396:LEU:H	2.19	0.46
3:E:559:ALA:C	3:E:561:GLY:H	2.18	0.46
5:H:80:ASN:N	5:H:110:VAL:O	2.47	0.46
5:H:518:GLY:O	5:I:593:ILE:HA	2.16	0.46
1:A:403:ILE:HG12	1:A:417:PHE:HB2	1.96	0.46
2:C:56:PHE:CB	3:D:6:VAL:HG11	2.46	0.46
2:C:64:SER:OG	2:C:65:VAL:N	2.49	0.46
3:E:493:LYS:HG3	3:E:494:THR:O	2.14	0.46
2:B:263:LEU:O	2:B:264:PRO:C	2.52	0.46
2:C:42:GLY:HA2	2:C:76:MET:N	2.30	0.46
2:C:166:SER:HB3	2:C:186:TYR:CE2	2.51	0.46
2:C:170:PRO:HG3	2:C:188:TRP:CG	2.51	0.46
3:E:620:THR:O	3:E:621:ILE:HB	2.16	0.46
5:G:536:GLU:HA	5:H:574:ALA:O	2.15	0.46
5:G:593:ILE:O	5:I:488:VAL:N	2.29	0.46
1:A:113:MET:HE3	1:A:612:TRP:HA	1.98	0.46
1:A:906:LEU:HD23	2:B:334:PHE:CA	2.45	0.46
2:B:309:MET:HE3	2:C:13:THR:HG21	1.98	0.46
2:C:184:ASP:CG	2:C:185:GLY:H	2.18	0.46
3:D:94:GLN:NE2	3:D:228:GLU:HB2	2.30	0.46
3:D:374:ILE:HB	3:D:408:ILE:HD13	1.98	0.46
3:E:491:PHE:O	3:E:492:TYR:HB3	2.16	0.46
5:G:23:GLY:O	5:G:26:ILE:N	2.48	0.46
5:G:592:TYR:HA	5:I:486:VAL:H	1.81	0.46
1:A:260:THR:HB	1:A:291:VAL:HG12	1.97	0.46
5:G:467:ASN:CB	5:I:418:GLY:HA2	2.45	0.46
5:I:420:VAL:HA	5:I:435:ALA:HA	1.98	0.46
1:A:132:SER:C	1:A:134:TYR:H	2.19	0.46
1:A:481:ALA:HB3	1:A:487:MET:H	1.81	0.46
1:A:713:ILE:HD12	2:B:5:SER:CB	2.45	0.46
2:B:168:THR:N	2:B:169:PRO:HD3	2.30	0.46
3:D:542:SER:HA	3:D:553:VAL:HG23	1.97	0.46
1:A:357:ILE:HG13	1:A:413:TRP:CE3	2.50	0.46
1:A:793:CYS:CB	1:A:813:ILE:HD11	2.46	0.46
1:A:860:SER:HB2	1:A:863:VAL:HG22	1.98	0.46
1:A:1019:PRO:HD2	2:B:91:PRO:CB	2.46	0.46
2:B:92:ARG:NH2	2:B:205:ASN:O	2.49	0.46

Continued on next page...

Continued from previous page...

Atom-1	Atom-2	Interatomic distance (Å)	Clash overlap (Å)
2:B:238:LEU:HD12	2:B:241:ARG:HH21	1.79	0.46
2:B:281:ALA:N	2:B:301:ASP:O	2.49	0.46
2:C:55:GLY:O	2:C:56:PHE:CD2	2.69	0.46
1:A:679:TYR:OH	3:D:20:ILE:HD13	1.61	0.46
1:A:965:LEU:O	1:A:967:ASP:N	2.38	0.46
2:B:86:LEU:CB	2:B:249:PHE:HB3	2.46	0.46
2:C:56:PHE:HB3	3:D:6:VAL:HG11	1.98	0.46
3:E:28:GLU:HG2	3:E:65:LEU:CD1	2.46	0.46
5:G:123:PRO:O	5:G:125:GLU:N	2.49	0.46
1:A:326:VAL:CG1	1:A:355:MET:HG2	2.46	0.45
1:A:667:PHE:CE1	3:D:37:LEU:HG	2.51	0.45
2:B:13:THR:HG22	2:C:310:ILE:O	2.16	0.45
2:B:47:TRP:NE1	2:B:58:PRO:HA	2.27	0.45
2:B:55:GLY:O	2:B:56:PHE:CD1	2.58	0.45
2:B:281:ALA:O	2:B:282:LYS:HB2	2.16	0.45
2:C:250:LYS:HE2	2:C:327:GLU:HG3	1.98	0.45
2:C:258:PHE:CD2	2:C:264:PRO:HG3	2.52	0.45
3:D:449:THR:HA	3:D:453:GLU:HB2	1.98	0.45
3:E:104:SER:OG	3:E:316:GLY:O	2.28	0.45
3:E:514:THR:HA	3:E:539:ARG:HB2	1.98	0.45
1:A:50:PRO:C	1:A:52:ASN:H	2.19	0.45
1:A:800:ARG:HG2	1:A:801:SER:O	2.16	0.45
2:C:137:PRO:HD2	2:C:162:PRO:HB3	1.98	0.45
3:E:228:GLU:HG3	3:E:229:THR:H	1.81	0.45
5:G:139:ALA:HB1	5:G:142:ARG:H	1.81	0.45
1:A:32:PHE:CZ	2:C:60:TYR:CB	2.99	0.45
1:A:246:TYR:OH	1:A:318:ILE:HG12	2.16	0.45
1:A:405:VAL:HG12	1:A:407:ASN:N	2.29	0.45
2:B:192:PHE:HD1	2:B:193:GLU:H	1.65	0.45
3:D:204:ALA:O	3:D:206:TRP:HD1	2.00	0.45
3:E:539:ARG:HE	3:E:580:LEU:HD22	1.81	0.45
1:A:223:LYS:O	1:A:224:LEU:HG	2.17	0.45
1:A:365:CYS:HA	1:A:379:ILE:HA	1.98	0.45
3:D:101:THR:HG21	3:D:351:GLU:O	2.16	0.45
3:E:595:ILE:HG23	3:E:602:ILE:HG13	1.98	0.45
5:G:518:GLY:HA3	5:H:594:THR:CB	2.46	0.45
1:A:161:SER:OG	3:E:156:ASP:CA	2.57	0.45
2:B:55:GLY:O	2:B:56:PHE:O	2.35	0.45
2:B:303:MET:O	2:B:304:ARG:C	2.55	0.45
3:D:64:THR:HA	3:D:67:ILE:HG22	1.99	0.45
3:D:516:SER:HA	3:D:537:ASP:HA	1.97	0.45

Continued on next page...

Continued from previous page...

Atom-1	Atom-2	Interatomic distance (Å)	Clash overlap (Å)
3:D:536:TYR:OH	3:D:558:PHE:HA	2.16	0.45
4:F:92:ALA:O	4:F:96:ALA:N	2.44	0.45
4:F:187:ILE:O	4:F:190:LYS:HB3	2.16	0.45
5:G:100:ALA:C	5:G:102:TRP:H	2.19	0.45
5:I:478:TRP:CB	5:I:600:ARG:HA	2.47	0.45
1:A:502:THR:OG1	1:A:503:PRO:HD2	2.16	0.45
1:A:923:SER:HA	1:A:988:LYS:NZ	2.31	0.45
2:B:217:LYS:HZ3	2:B:236:PHE:H	1.64	0.45
3:D:104:SER:HB2	3:D:317:GLY:HA3	1.99	0.45
3:D:448:TYR:HA	3:D:452:VAL:HG12	1.98	0.45
1:A:337:ASP:OD1	1:A:338:PHE:N	2.48	0.45
1:A:854:TYR:O	1:A:857:ARG:HG2	2.16	0.45
1:A:948:THR:N	2:B:118:PRO:CB	2.80	0.45
2:B:60:TYR:HD1	2:B:61:PRO:CD	2.29	0.45
2:C:271:GLN:HB2	2:C:313:GLU:O	2.16	0.45
3:D:453:GLU:HA	3:D:641:VAL:HG22	1.99	0.45
3:E:107:GLN:O	3:E:108:THR:OG1	2.34	0.45
3:E:108:THR:HG22	3:E:109:GLU:H	1.81	0.45
4:F:6:PHE:HE2	4:F:32:TYR:CE1	2.33	0.45
5:G:47:GLY:HA2	5:G:66:LYS:HA	1.98	0.45
1:A:726:PHE:O	1:A:728:GLU:N	2.43	0.45
1:A:785:THR:HG22	1:A:794:ASN:OD1	2.16	0.45
1:A:913:ILE:HG22	2:B:327:GLU:O	1.98	0.45
3:D:23:GLY:HA2	3:D:68:GLN:HE21	1.82	0.45
3:E:634:THR:HB	3:E:638:SER:OG	2.17	0.45
4:F:125:SER:HB2	4:F:133:TRP:NE1	2.32	0.45
5:G:78:THR:O	5:G:109:LEU:N	2.38	0.45
5:H:86:VAL:C	5:H:88:ASP:N	2.70	0.45
1:A:212:SER:OG	1:A:219:TRP:HA	2.17	0.45
1:A:910:GLU:O	2:B:331:LEU:HB2	2.16	0.45
2:B:202:ARG:NH1	2:B:209:VAL:HG21	2.32	0.45
2:C:81:VAL:HG23	2:C:249:PHE:CE1	2.51	0.45
2:C:138:ASP:HB3	2:C:150:LYS:HD2	1.98	0.45
3:D:440:ILE:HD11	3:D:468:VAL:HA	1.99	0.45
3:E:177:ILE:HG13	3:E:178:ILE:N	2.32	0.45
3:E:484:MET:SD	3:E:627:PRO:HB3	2.57	0.45
3:E:651:LEU:HB3	3:E:653:ILE:HG23	1.98	0.45
5:H:18:TYR:O	5:H:21:LYS:N	2.34	0.45
1:A:875:TRP:O	1:A:878:ASP:N	2.47	0.45
1:A:928:GLU:HG2	1:A:959:ALA:HA	1.98	0.45
2:C:148:THR:HG23	2:C:149:ASP:N	2.32	0.45

Continued on next page...

Continued from previous page...

Atom-1	Atom-2	Interatomic distance (Å)	Clash overlap (Å)
3:D:105:ALA:HB2	3:D:275:THR:HG22	1.98	0.45
3:D:420:LEU:HB3	3:D:480:ALA:HB2	1.99	0.45
4:F:103:ASN:OD1	4:F:104:VAL:HG12	2.17	0.45
1:A:323:ARG:NH1	1:A:388:ALA:HA	2.32	0.44
1:A:525:TRP:CG	1:A:526:ILE:N	2.85	0.44
1:A:793:CYS:SG	1:A:813:ILE:HD11	2.57	0.44
1:A:834:PHE:O	1:A:834:PHE:CG	2.70	0.44
2:B:78:THR:O	2:B:296:TYR:HA	2.16	0.44
3:E:486:ARG:HD3	3:E:501:TYR:HB3	1.99	0.44
5:H:415:ASP:HA	5:H:441:ARG:H	1.81	0.44
1:A:73:ASP:O	1:A:76:THR:OG1	2.33	0.44
1:A:366:TYR:CD1	1:A:380:ILE:HD11	2.53	0.44
1:A:595:ILE:HG13	1:A:596:SER:N	2.32	0.44
1:A:920:LYS:CB	5:H:17:ASP:CB	2.95	0.44
1:A:1014:ASP:OD1	1:A:1014:ASP:N	2.49	0.44
1:A:923:SER:HB3	5:I:20:ARG:CB	2.38	0.44
2:B:60:TYR:HE1	2:C:11:ILE:HG23	1.79	0.44
2:B:94:ASP:HB3	2:B:113:VAL:HG22	1.98	0.44
2:B:95:TRP:CD2	2:B:169:PRO:HG2	2.52	0.44
2:B:310:ILE:HD11	2:C:16:PHE:HD1	1.82	0.44
3:D:177:ILE:HG21	3:D:185:ILE:HD12	2.00	0.44
3:E:640:ILE:HG23	3:E:641:VAL:N	2.33	0.44
5:H:480:LEU:HA	5:H:597:ARG:O	2.17	0.44
1:A:304:VAL:HG12	1:A:322:ALA:HB3	2.00	0.44
1:A:378:LEU:HB2	1:A:434:MET:HE3	1.99	0.44
3:D:123:ILE:HD11	3:D:295:ILE:HD11	1.98	0.44
3:D:127:ARG:O	3:D:147:SER:OG	2.35	0.44
3:D:187:ILE:HD12	3:D:189:ASP:H	1.81	0.44
5:H:519:THR:HA	5:I:592:TYR:O	2.17	0.44
1:A:790:THR:HG1	1:A:820:LEU:HA	1.83	0.44
1:A:884:HIS:ND1	1:A:885:PRO:HD2	2.32	0.44
3:D:180:ASP:C	3:D:182:LEU:H	2.20	0.44
3:E:370:GLY:C	3:E:404:ILE:HA	2.38	0.44
3:E:604:TRP:HZ2	3:E:623:LEU:HD21	1.83	0.44
4:F:2:LEU:HB2	4:F:71:TRP:HZ2	1.83	0.44
5:I:22:GLY:O	5:I:24:ILE:N	2.51	0.44
1:A:336:ILE:HD13	1:A:348:ARG:HA	2.00	0.44
2:B:10:ALA:HA	2:C:312:MET:O	2.18	0.44
2:B:95:TRP:CE3	2:B:104:TYR:HE1	2.35	0.44
2:B:132:ARG:NH2	2:B:169:PRO:O	2.47	0.44
3:D:458:SER:OG	3:D:633:PHE:HA	2.18	0.44

Continued on next page...

Continued from previous page...

Atom-1	Atom-2	Interatomic distance (Å)	Clash overlap (Å)
3:D:517:PHE:HE2	3:D:538:VAL:HB	1.81	0.44
3:D:571:PRO:HB3	3:D:590:TYR:CE1	2.53	0.44
3:E:51:SER:C	3:E:53:LEU:H	2.21	0.44
3:E:589:TYR:O	3:E:590:TYR:CG	2.70	0.44
5:H:87:ASN:H	5:H:136:VAL:CB	2.30	0.44
1:A:713:ILE:HD12	2:B:5:SER:OG	2.16	0.44
1:A:779:GLU:CD	1:A:780:ASP:H	2.21	0.44
1:A:921:TRP:N	5:H:19:LEU:HA	2.31	0.44
2:B:68:VAL:HG22	2:B:309:MET:CE	2.48	0.44
3:D:102:SER:H	3:D:194:ARG:HH12	1.64	0.44
3:D:311:VAL:HG22	3:D:646:LEU:HD13	1.99	0.44
3:E:555:ILE:HG23	3:E:555:ILE:O	2.18	0.44
3:E:559:ALA:O	3:E:560:SER:OG	2.29	0.44
3:E:592:ILE:HG21	3:E:606:ILE:HG22	1.99	0.44
4:F:4:THR:HG23	4:F:5:PHE:H	1.82	0.44
5:H:457:GLY:O	5:I:463:ALA:HB3	2.18	0.44
1:A:682:GLN:HE22	3:D:72:ASN:CB	2.23	0.44
2:B:92:ARG:HD3	2:B:205:ASN:O	2.18	0.44
2:B:213:PRO:HD3	2:B:239:ILE:HG22	2.00	0.44
3:E:81:ARG:HD2	3:E:325:ILE:HG21	2.00	0.44
4:F:53:SER:C	4:F:55:ARG:N	2.71	0.44
4:F:191:SER:O	4:F:192:TYR:CD2	2.71	0.44
1:A:18:ALA:HB1	1:A:74:PRO:HB3	1.99	0.44
1:A:488:MET:HG2	1:A:489:ALA:H	1.83	0.44
2:B:175:ASP:HB3	2:B:178:GLY:O	2.18	0.44
2:C:25:TYR:CD1	2:C:212:TRP:CZ2	3.06	0.44
2:C:202:ARG:CD	2:C:209:VAL:HG21	2.47	0.44
2:C:263:LEU:N	2:C:264:PRO:HD2	2.33	0.44
3:D:419:ASN:HA	3:D:652:THR:O	2.18	0.44
3:E:414:LEU:HD21	3:E:484:MET:HE3	2.00	0.44
3:E:510:MET:HB3	3:E:542:SER:OG	2.18	0.44
1:A:436:THR:OG1	1:A:441:VAL:HA	2.18	0.43
1:A:690:ILE:HA	1:A:693:GLN:HG2	2.00	0.43
2:B:28:ILE:HD12	2:B:37:ILE:CD1	2.46	0.43
2:B:179:THR:OG1	2:B:188:TRP:O	2.26	0.43
3:D:209:TRP:HB2	3:D:223:ILE:HB	2.00	0.43
5:H:86:VAL:CB	5:H:88:ASP:H	2.31	0.43
1:A:679:TYR:HA	1:A:684:ASN:ND2	2.33	0.43
1:A:777:LEU:HG	1:A:834:PHE:HE1	1.83	0.43
1:A:898:MET:HG3	2:C:330:ILE:CG1	2.47	0.43
1:A:913:ILE:HG12	2:B:328:ILE:CD1	2.48	0.43

Continued on next page...

Continued from previous page...

Atom-1	Atom-2	Interatomic distance (Å)	Clash overlap (Å)
2:B:104:TYR:C	2:B:105:THR:HG1	2.21	0.43
3:D:485:VAL:HG12	3:D:624:TYR:CB	2.49	0.43
3:E:488:VAL:HG11	3:E:499:ILE:HG13	2.00	0.43
5:H:125:GLU:CB	5:H:127:ASN:H	2.31	0.43
1:A:18:ALA:HB3	1:A:105:THR:O	2.18	0.43
1:A:35:PHE:HB3	1:A:61:TYR:HB3	1.99	0.43
1:A:898:MET:HE3	2:C:272:ILE:HD13	0.52	0.43
2:B:151:ASP:CG	2:B:160:TRP:HH2	2.21	0.43
2:B:310:ILE:CG1	2:C:16:PHE:HD1	2.31	0.43
2:B:317:PRO:O	2:B:318:ILE:HG22	2.17	0.43
2:C:43:ARG:HB2	2:C:271:GLN:HG2	2.00	0.43
3:E:176:GLU:HA	3:E:269:VAL:HA	1.99	0.43
3:E:465:LEU:HA	3:E:468:VAL:CG1	2.45	0.43
5:G:461:GLU:O	5:I:458:THR:HA	2.17	0.43
5:H:17:ASP:CB	5:H:19:LEU:H	2.30	0.43
5:I:76:ARG:O	5:I:104:VAL:HA	2.18	0.43
5:I:456:ILE:CB	5:I:602:ALA:HA	2.49	0.43
1:A:441:VAL:HG11	1:A:498:TRP:HD1	1.83	0.43
1:A:443:LEU:HD23	1:A:444:SER:O	2.18	0.43
3:E:134:TYR:CE1	3:E:142:PRO:HG3	2.53	0.43
4:F:112:HIS:NE2	4:F:123:LEU:O	2.52	0.43
5:G:564:PRO:CB	5:I:554:GLY:HA3	2.49	0.43
1:A:606:ASP:OD2	1:A:607:THR:HG23	2.19	0.43
3:E:194:ARG:HH21	3:E:234:THR:HG22	1.81	0.43
5:I:560:ASP:C	5:I:562:SER:H	2.21	0.43
3:D:17:ILE:CD1	4:F:16:VAL:HG22	2.47	0.43
3:D:120:ARG:O	3:D:161:TYR:OH	2.32	0.43
1:A:201:LEU:HG	1:A:210:LYS:O	2.18	0.43
1:A:626:GLN:HG2	1:A:626:GLN:O	2.18	0.43
1:A:685:ASN:OD1	3:D:21:PHE:HZ	1.91	0.43
1:A:773:GLN:HB3	1:A:808:GLN:HG2	2.00	0.43
3:D:106:ALA:HB1	3:D:313:ALA:HB1	2.00	0.43
3:D:199:LEU:HD23	3:D:224:TYR:CZ	2.54	0.43
3:D:417:LYS:HG3	3:D:650:TYR:HB2	2.00	0.43
3:D:546:ASP:CG	3:D:547:SER:H	2.22	0.43
1:A:145:ALA:O	1:A:587:PHE:HB3	2.19	0.43
1:A:317:TYR:CB	1:A:330:LYS:HA	2.48	0.43
1:A:492:ALA:CB	1:A:501:PHE:HA	2.48	0.43
2:C:47:TRP:CE2	2:C:59:PRO:HD2	2.53	0.43
3:D:202:ASP:OD1	3:D:203:GLY:N	2.52	0.43
3:E:542:SER:HA	3:E:553:VAL:HA	2.01	0.43

Continued on next page...

Continued from previous page...

Atom-1	Atom-2	Interatomic distance (Å)	Clash overlap (Å)
4:F:2:LEU:HD22	4:F:181:MET:CE	2.49	0.43
4:F:43:TYR:HD2	4:F:180:PHE:HD1	1.67	0.43
4:F:47:THR:CG2	4:F:171:ILE:HD12	2.47	0.43
4:F:69:LEU:O	4:F:71:TRP:CD1	2.71	0.43
1:A:303:ASN:OD1	1:A:304:VAL:N	2.52	0.43
1:A:517:SER:HB3	1:A:522:THR:O	2.19	0.43
1:A:970:ASN:HB2	1:A:973:ASN:HA	2.01	0.43
1:A:984:SER:O	1:A:986:ARG:N	2.52	0.43
2:C:25:TYR:CE1	2:C:212:TRP:CZ3	3.07	0.43
2:C:34:LYS:O	2:C:291:LYS:NZ	2.45	0.43
2:C:217:LYS:HB2	2:C:236:PHE:HZ	1.78	0.43
3:D:109:GLU:HG3	3:D:165:LEU:O	2.19	0.43
3:E:109:GLU:OE2	3:E:164:ARG:NE	2.51	0.43
3:E:319:PRO:HG2	3:E:324:ARG:NH2	2.32	0.43
4:F:110:VAL:HG12	4:F:154:ASP:O	2.19	0.43
4:F:169:ILE:HD12	4:F:170:LYS:O	2.19	0.43
5:I:460:TYR:CB	5:I:600:ARG:H	2.32	0.43
1:A:239:TYR:HE2	1:A:313:CYS:H	1.66	0.43
1:A:326:VAL:HG11	1:A:355:MET:HE2	2.00	0.43
1:A:726:PHE:C	1:A:728:GLU:H	2.23	0.43
1:A:830:ARG:HH22	1:A:861:TYR:HE1	1.67	0.43
2:B:114:CYS:H	2:B:130:VAL:HG21	1.84	0.43
2:B:202:ARG:HH12	2:B:209:VAL:HG21	1.84	0.43
3:D:512:SER:O	3:D:623:LEU:HA	2.19	0.43
3:E:115:THR:O	3:E:296:THR:N	2.48	0.43
3:E:513:ASN:ND2	3:E:621:ILE:HA	2.33	0.43
1:A:305:TYR:O	1:A:307:ILE:HG22	2.19	0.42
2:B:71:MET:O	2:B:75:MET:N	2.52	0.42
2:B:270:ARG:O	2:B:271:GLN:O	2.37	0.42
3:D:629:ASP:OD1	3:D:630:ASP:N	2.52	0.42
3:E:201:VAL:CB	3:E:268:ILE:HA	2.49	0.42
4:F:158:ALA:O	4:F:162:GLU:N	2.49	0.42
5:H:520:GLY:N	5:I:592:TYR:O	2.50	0.42
1:A:962:LYS:O	1:A:963:TYR:CG	2.72	0.42
2:B:213:PRO:O	2:B:214:GLU:HB3	2.18	0.42
2:C:37:ILE:CD1	2:C:276:THR:HG22	2.49	0.42
5:G:54:ALA:C	5:G:56:SER:H	2.23	0.42
1:A:943:GLU:N	1:A:951:ALA:HA	2.34	0.42
2:B:26:ASN:HD21	2:C:33:ASP:HB3	1.83	0.42
2:C:128:TRP:HB2	2:C:194:ILE:HB	2.01	0.42
3:D:377:LYS:HE3	3:D:641:VAL:HG11	2.00	0.42

Continued on next page...

Continued from previous page...

Atom-1	Atom-2	Interatomic distance (Å)	Clash overlap (Å)
3:D:619:GLN:O	3:D:620:THR:OG1	2.31	0.42
5:H:111:ALA:O	5:H:114:GLY:N	2.44	0.42
1:A:36:VAL:HG11	1:A:67:PHE:CE2	2.54	0.42
1:A:162:SER:O	3:E:154:ILE:HG12	2.16	0.42
1:A:180:ILE:HG22	1:A:181:GLN:N	2.29	0.42
1:A:300:LEU:CB	1:A:302:ALA:H	2.32	0.42
2:B:68:VAL:HG22	2:B:309:MET:HE2	2.01	0.42
2:B:94:ASP:N	2:B:94:ASP:OD1	2.51	0.42
3:D:434:GLN:O	3:D:437:GLU:HB3	2.19	0.42
3:D:538:VAL:HG22	3:D:539:ARG:H	1.84	0.42
3:E:613:SER:C	3:E:615:LYS:H	2.22	0.42
1:A:146:LEU:HD21	1:A:575:PHE:HE1	1.85	0.42
1:A:193:MET:O	1:A:200:TYR:N	2.48	0.42
1:A:568:ILE:HD11	1:A:618:PHE:HD2	1.84	0.42
1:A:936:LEU:N	1:A:940:GLY:HA3	2.34	0.42
2:B:77:GLY:H	2:B:299:PRO:HD3	1.84	0.42
2:B:263:LEU:CB	2:B:264:PRO:CD	2.97	0.42
3:E:28:GLU:HA	3:E:65:LEU:HD11	2.02	0.42
3:E:461:LYS:O	3:E:465:LEU:HD13	2.19	0.42
1:A:148:ASN:HA	1:A:582:ALA:HB1	2.00	0.42
1:A:583:SER:OG	1:A:604:VAL:HG22	2.20	0.42
1:A:713:ILE:HD11	2:B:5:SER:HB2	2.02	0.42
2:C:71:MET:O	2:C:75:MET:HG3	2.20	0.42
3:D:39:GLY:C	3:D:41:ASN:H	2.22	0.42
3:D:123:ILE:HG22	3:D:153:ALA:HB3	2.02	0.42
3:D:515:PHE:HB2	3:D:538:VAL:O	2.19	0.42
3:D:554:ILE:HG12	3:D:578:ASN:ND2	2.35	0.42
3:E:495:PRO:O	3:E:497:ALA:N	2.43	0.42
4:F:28:ILE:HG23	4:F:29:PHE:CD1	2.54	0.42
1:A:172:GLU:O	1:A:173:TYR:HB3	2.19	0.42
1:A:406:LEU:HA	1:A:413:TRP:HA	2.01	0.42
2:B:106:PHE:CE1	2:B:188:TRP:CZ2	3.08	0.42
3:D:84:ASN:O	3:D:85:LEU:CB	2.67	0.42
3:D:486:ARG:O	3:D:623:LEU:HG	2.19	0.42
5:H:27:ASN:O	5:H:31:ASP:N	2.29	0.42
1:A:36:VAL:CG1	1:A:59:LEU:HB2	2.50	0.42
1:A:118:LEU:HD11	1:A:619:LEU:HD22	2.02	0.42
1:A:898:MET:HG3	2:C:330:ILE:CB	2.50	0.42
1:A:898:MET:HG2	2:C:330:ILE:HB	2.01	0.42
2:B:27:SER:OG	2:B:34:LYS:HA	2.19	0.42
3:D:77:GLU:HB2	3:D:88:SER:OG	2.19	0.42

Continued on next page...

Continued from previous page...

Atom-1	Atom-2	Interatomic distance (Å)	Clash overlap (Å)
3:D:346:ASP:HA	3:D:360:VAL:HG21	2.02	0.42
3:E:99:LEU:O	3:E:99:LEU:HD12	2.19	0.42
3:E:616:PHE:HB3	3:E:618:VAL:HG23	2.01	0.42
1:A:158:VAL:HG13	1:A:159:ASP:H	1.84	0.42
1:A:181:GLN:HG2	1:A:210:LYS:NZ	2.35	0.42
3:D:111:MET:HA	3:D:164:ARG:HA	2.02	0.42
3:D:541:VAL:HG12	3:D:543:THR:H	1.85	0.42
3:D:595:ILE:HA	3:D:601:VAL:O	2.19	0.42
1:A:40:GLU:HA	1:A:77:THR:O	2.19	0.42
1:A:966:PRO:C	1:A:968:ASP:H	2.24	0.42
3:D:420:LEU:HG	3:D:653:ILE:HG22	2.01	0.42
3:E:71:GLY:O	3:E:75:VAL:N	2.53	0.42
1:A:232:PRO:HG3	1:A:237:VAL:HG22	2.01	0.41
1:A:583:SER:HB2	1:A:603:ARG:HA	2.02	0.41
1:A:860:SER:HB2	1:A:863:VAL:CG2	2.50	0.41
1:A:913:ILE:CG1	2:B:328:ILE:CD1	2.98	0.41
2:B:114:CYS:N	2:B:130:VAL:HG11	2.34	0.41
2:B:198:VAL:HG21	2:B:223:TRP:CH2	2.55	0.41
2:B:275:ILE:CD1	2:B:275:ILE:C	2.84	0.41
2:C:90:ILE:HD13	2:C:242:VAL:HG11	2.01	0.41
3:D:414:LEU:O	3:D:640:ILE:HA	2.19	0.41
3:E:77:GLU:HA	3:E:83:ALA:HB1	2.02	0.41
3:E:505:ILE:HG21	3:E:625:SER:HB2	2.02	0.41
1:A:328:TYR:HB2	1:A:351:GLU:CB	2.50	0.41
1:A:366:TYR:HB2	1:A:380:ILE:HG13	2.01	0.41
1:A:792:ARG:O	1:A:816:LEU:HD12	2.20	0.41
2:B:51:GLU:HG2	2:B:269:PHE:CZ	2.54	0.41
2:B:270:ARG:HA	2:B:315:ARG:O	2.19	0.41
2:C:24:PHE:CG	2:C:334:PHE:CZ	3.09	0.41
3:D:187:ILE:HD12	3:D:188:TYR:N	2.35	0.41
3:D:201:VAL:O	3:D:203:GLY:N	2.39	0.41
3:D:390:GLU:O	3:D:393:LYS:HB3	2.20	0.41
3:E:94:GLN:HE22	3:E:228:GLU:H	1.67	0.41
4:F:39:ALA:HB2	4:F:187:ILE:HD13	2.02	0.41
5:H:18:TYR:O	5:H:19:LEU:C	2.58	0.41
5:H:558:ASP:O	5:H:560:ASP:N	2.53	0.41
2:B:39:ILE:HG12	2:B:40:THR:H	1.85	0.41
2:B:169:PRO:CD	2:B:170:PRO:HD2	2.51	0.41
2:B:169:PRO:HD2	2:B:170:PRO:HD2	2.02	0.41
2:C:282:LYS:HE2	2:C:303:MET:SD	2.60	0.41
3:D:22:VAL:O	3:D:76:TYR:OH	2.38	0.41

Continued on next page...

Continued from previous page...

Atom-1	Atom-2	Interatomic distance (Å)	Clash overlap (Å)
3:D:174:ARG:HA	3:D:270:ILE:O	2.21	0.41
3:D:384:LEU:O	3:D:385:THR:OG1	2.36	0.41
3:D:414:LEU:HD12	3:D:485:VAL:O	2.20	0.41
3:D:448:TYR:O	3:D:453:GLU:N	2.53	0.41
3:E:356:ILE:CD1	3:E:357:ILE:HG12	2.50	0.41
3:E:464:MET:HG3	3:E:465:LEU:N	2.35	0.41
5:G:537:THR:CB	5:H:574:ALA:HB3	2.49	0.41
1:A:41:THR:HG1	1:A:78:TYR:HD2	1.66	0.41
1:A:338:PHE:O	1:A:338:PHE:CG	2.73	0.41
1:A:798:ILE:O	1:A:798:ILE:HG13	2.20	0.41
1:A:968:ASP:C	1:A:970:ASN:H	2.24	0.41
2:B:47:TRP:CH2	2:B:59:PRO:CD	2.75	0.41
3:D:354:GLY:C	3:D:356:ILE:H	2.23	0.41
3:E:434:GLN:HA	3:E:437:GLU:HB3	2.03	0.41
3:E:652:THR:O	3:E:652:THR:HG22	2.21	0.41
4:F:2:LEU:HB2	4:F:71:TRP:CZ2	2.55	0.41
4:F:94:TYR:O	4:F:98:ILE:HD12	2.19	0.41
1:A:134:TYR:HD2	1:A:135:VAL:HG22	1.84	0.41
1:A:248:LEU:HD21	1:A:308:ALA:HB1	2.02	0.41
2:B:234:ASP:C	2:B:235:ASP:O	2.58	0.41
2:C:135:ASP:CB	2:C:187:VAL:HG11	2.49	0.41
4:F:1:MET:O	4:F:1:MET:HG2	2.19	0.41
5:H:494:ILE:C	5:H:500:ALA:HB1	2.41	0.41
1:A:61:TYR:CD1	2:B:156:LEU:HD22	2.56	0.41
1:A:157:TYR:CD2	1:A:163:ILE:HG21	2.56	0.41
1:A:229:VAL:HG22	1:A:230:GLY:H	1.85	0.41
1:A:749:LYS:NZ	1:A:756:VAL:HG12	2.36	0.41
1:A:897:THR:HG22	2:C:329:ASN:CB	2.50	0.41
2:B:43:ARG:O	2:B:269:PHE:HB2	2.21	0.41
2:B:144:ILE:HD11	2:B:153:CYS:CB	2.49	0.41
2:C:293:GLU:N	2:C:297:TYR:OH	2.52	0.41
4:F:94:TYR:HD1	4:F:156:TYR:CD1	2.38	0.41
5:G:23:GLY:O	5:G:27:ASN:N	2.41	0.41
5:I:72:THR:C	5:I:74:SER:N	2.74	0.41
5:I:523:THR:C	5:I:588:ASN:H	2.23	0.41
1:A:489:ALA:HB1	1:A:491:ILE:HG13	2.03	0.41
1:A:779:GLU:HG3	1:A:798:ILE:HG21	2.02	0.41
2:C:41:PHE:CD1	2:C:272:ILE:HG22	2.55	0.41
2:C:55:GLY:HA3	3:D:7:ASN:OD1	2.21	0.41
2:C:129:LEU:HB3	2:C:131:TYR:CE2	2.56	0.41
2:C:174:GLY:O	2:C:177:GLU:HG3	2.21	0.41

Continued on next page...

Continued from previous page...

Atom-1	Atom-2	Interatomic distance (Å)	Clash overlap (Å)
3:D:201:VAL:HB	3:D:206:TRP:NE1	2.35	0.41
3:E:493:LYS:HA	3:E:605:ASN:HA	2.02	0.41
5:H:486:VAL:N	5:I:591:PRO:O	2.54	0.41
2:B:86:LEU:HD13	2:B:247:ILE:HD11	2.01	0.41
2:C:129:LEU:HD23	2:C:131:TYR:OH	2.21	0.41
3:D:106:ALA:HA	3:D:314:ASP:O	2.21	0.41
3:D:487:GLU:CD	3:D:647:ARG:HH22	2.18	0.41
3:D:545:ARG:HG2	3:D:546:ASP:H	1.86	0.41
5:G:446:VAL:O	5:G:450:PHE:N	2.54	0.41
5:I:431:PRO:O	5:I:432:ASN:CB	2.68	0.41
1:A:142:ILE:HG22	1:A:143:MET:N	2.28	0.41
1:A:317:TYR:HB2	1:A:329:ILE:O	2.21	0.41
1:A:667:PHE:HE2	3:D:60:LEU:CD2	2.33	0.41
1:A:861:TYR:CE2	1:A:862:TYR:HD2	2.38	0.41
1:A:928:GLU:HG3	1:A:929:TYR:N	2.26	0.41
1:A:1019:PRO:HD2	2:B:91:PRO:HB2	2.02	0.41
2:B:87:ASP:HA	2:B:212:TRP:CZ2	2.56	0.41
2:C:191:LEU:HD12	2:C:191:LEU:O	2.21	0.41
3:D:26:PHE:O	3:D:28:GLU:N	2.53	0.41
3:D:187:ILE:HG12	3:D:234:THR:OG1	2.20	0.41
3:D:230:ILE:C	3:D:232:GLY:H	2.24	0.41
3:D:362:THR:HG22	3:D:374:ILE:HG23	2.03	0.41
3:D:362:THR:HG22	3:D:374:ILE:HG12	2.02	0.41
3:D:546:ASP:OD1	3:D:547:SER:N	2.54	0.41
3:E:541:VAL:HG12	3:E:542:SER:N	2.36	0.41
3:E:555:ILE:HG21	3:E:592:ILE:HD11	2.03	0.41
3:E:592:ILE:HG22	3:E:592:ILE:O	2.21	0.41
3:E:592:ILE:HD12	3:E:606:ILE:HA	2.02	0.41
4:F:30:ARG:HD3	4:F:30:ARG:HA	1.80	0.41
1:A:154:SER:OG	3:E:305:ASN:N	2.47	0.41
1:A:897:THR:HA	2:C:329:ASN:CB	2.51	0.41
1:A:945:ASP:CA	2:B:118:PRO:CB	2.98	0.41
2:B:60:TYR:HD1	2:B:61:PRO:HD2	1.86	0.41
2:C:109:ASN:OD1	2:C:109:ASN:N	2.53	0.41
4:F:183:ASP:O	4:F:186:ARG:N	2.53	0.41
5:G:531:ASN:HA	5:H:584:THR:N	2.36	0.41
1:A:142:ILE:HD12	1:A:142:ILE:HG23	1.83	0.40
1:A:183:VAL:HG22	1:A:190:VAL:HG12	2.03	0.40
1:A:864:MET:HE1	1:A:884:HIS:ND1	2.36	0.40
2:B:13:THR:OG1	2:B:14:SER:N	2.53	0.40
2:B:160:TRP:O	2:B:162:PRO:HD3	2.22	0.40

Continued on next page...

Continued from previous page...

Atom-1	Atom-2	Interatomic distance (Å)	Clash overlap (Å)
2:B:193:GLU:OE1	2:B:223:TRP:O	2.39	0.40
3:E:505:ILE:HD12	3:E:506:LYS:O	2.20	0.40
4:F:30:ARG:HB2	4:F:32:TYR:CE1	2.56	0.40
5:G:76:ARG:O	5:G:104:VAL:HA	2.20	0.40
5:H:459:ILE:N	5:I:463:ALA:HB2	2.36	0.40
1:A:759:GLU:OE1	1:A:759:GLU:N	2.54	0.40
1:A:793:CYS:HB3	1:A:816:LEU:HD13	2.03	0.40
1:A:993:LEU:O	1:A:994:PHE:HB2	2.21	0.40
2:B:149:ASP:O	2:B:150:LYS:CB	2.68	0.40
3:D:30:LYS:NZ	3:D:57:CYS:HB2	2.37	0.40
3:D:227:ARG:HG3	3:D:235:GLU:HB3	2.03	0.40
3:E:454:ILE:HD12	3:E:455:PHE:O	2.21	0.40
5:G:100:ALA:HA	5:G:124:VAL:CB	2.50	0.40
1:A:12:ARG:NH1	3:D:8:TYR:HB2	2.37	0.40
1:A:140:ASP:OD2	1:A:590:ALA:HB1	2.22	0.40
1:A:151:PHE:HB2	1:A:166:PHE:CG	2.57	0.40
1:A:794:ASN:O	1:A:813:ILE:HG13	2.21	0.40
3:D:21:PHE:CD1	3:D:75:VAL:HG21	2.56	0.40
3:D:409:ILE:O	3:D:410:SER:OG	2.29	0.40
3:E:145:PHE:HB3	3:E:167:LEU:HD11	2.03	0.40
3:E:327:GLU:O	3:E:331:ILE:HG12	2.21	0.40
3:E:505:ILE:H	3:E:505:ILE:HG13	1.75	0.40
4:F:71:TRP:C	4:F:73:LEU:N	2.71	0.40
5:G:55:SER:N	5:G:74:SER:O	2.54	0.40
1:A:913:ILE:CB	2:B:328:ILE:CD1	2.84	0.40
1:A:913:ILE:HG12	2:B:328:ILE:HD12	2.03	0.40
2:B:20:LYS:CD	2:C:20:LYS:HD3	2.52	0.40
3:D:104:SER:HB2	3:D:317:GLY:CA	2.52	0.40
3:D:187:ILE:HD12	3:D:189:ASP:N	2.37	0.40
3:D:465:LEU:HA	3:D:468:VAL:HB	2.04	0.40
3:E:136:LYS:HG2	3:E:137:ASP:N	2.36	0.40
4:F:125:SER:HB2	4:F:133:TRP:CD1	2.56	0.40
4:F:155:THR:HG23	4:F:156:TYR:N	2.36	0.40
1:A:404:TYR:CZ	1:A:415:ARG:HD2	2.55	0.40
2:B:248:ARG:HB2	2:B:330:ILE:O	2.22	0.40
2:B:249:PHE:CZ	2:B:330:ILE:HD11	2.57	0.40
3:E:487:GLU:CD	3:E:647:ARG:HH12	2.25	0.40

There are no symmetry-related clashes.

5.3 Torsion angles

5.3.1 Protein backbone

In the following table, the Percentiles column shows the percent Ramachandran outliers of the chain as a percentile score with respect to all PDB entries followed by that with respect to all EM entries.

The Analysed column shows the number of residues for which the backbone conformation was analysed, and the total number of residues.

Mol	Chain	Analysed	Favoured	Allowed	Outliers	Percentiles	
1	A	1028/1032 (100%)	803 (78%)	198 (19%)	27 (3%)	5	36
2	B	332/334 (99%)	266 (80%)	47 (14%)	19 (6%)	1	21
2	C	330/334 (99%)	286 (87%)	41 (12%)	3 (1%)	17	54
3	D	643/660 (97%)	454 (71%)	162 (25%)	27 (4%)	3	26
3	E	632/660 (96%)	483 (76%)	131 (21%)	18 (3%)	5	35
4	F	190/196 (97%)	151 (80%)	32 (17%)	7 (4%)	3	29
5	G	336/602 (56%)	250 (74%)	69 (20%)	17 (5%)	2	23
5	H	336/602 (56%)	253 (75%)	71 (21%)	12 (4%)	3	30
5	I	336/602 (56%)	254 (76%)	64 (19%)	18 (5%)	2	22
All	All	4163/5022 (83%)	3200 (77%)	815 (20%)	148 (4%)	6	30

All (148) Ramachandran outliers are listed below:

Mol	Chain	Res	Type
1	A	28	VAL
1	A	383	VAL
1	A	468	ILE
1	A	690	ILE
1	A	833	SER
1	A	937	THR
1	A	938	PRO
1	A	986	ARG
2	B	12	VAL
2	B	56	PHE
2	B	270	ARG
2	B	271	GLN
3	D	190	LYS
3	D	215	VAL
3	D	387	VAL
3	E	201	VAL

Continued on next page...

Continued from previous page...

Mol	Chain	Res	Type
3	E	652	THR
4	F	50	ILE
4	F	72	VAL
4	F	172	ILE
5	G	70	ILE
5	H	117	ILE
5	H	126	ILE
5	H	433	VAL
5	I	19	LEU
5	I	117	ILE
5	I	432	ASN
1	A	142	ILE
2	B	150	LYS
2	B	208	ILE
2	B	238	LEU
2	B	268	GLY
2	B	275	ILE
2	B	318	ILE
3	D	22	VAL
3	D	151	VAL
3	D	172	ILE
3	D	230	ILE
3	D	553	VAL
3	D	563	VAL
3	E	177	ILE
3	E	534	VAL
3	E	621	ILE
4	F	9	ILE
5	G	93	ILE
5	H	93	ILE
5	H	136	VAL
5	I	13	ASP
5	I	104	VAL
5	I	431	PRO
5	I	433	VAL
1	A	79	ILE
1	A	98	GLU
1	A	180	ILE
1	A	229	VAL
1	A	405	VAL
1	A	495	THR
2	B	13	THR

Continued on next page...

Continued from previous page...

Mol	Chain	Res	Type
2	B	192	PHE
2	B	235	ASP
2	B	236	PHE
2	B	261	ALA
2	B	317	PRO
3	D	40	GLN
3	D	100	PRO
3	D	202	ASP
3	D	264	GLN
3	D	492	TYR
3	D	512	SER
3	E	403	PRO
3	E	538	VAL
3	E	563	VAL
5	G	123	PRO
5	G	136	VAL
5	G	433	VAL
5	H	120	SER
5	H	128	VAL
5	I	20	ARG
5	I	128	VAL
1	A	406	LEU
1	A	882	PHE
1	A	985	GLU
2	B	108	ILE
2	B	148	THR
2	C	192	PHE
3	D	152	ILE
3	D	284	VAL
3	D	471	ALA
3	D	550	ILE
3	E	52	ARG
3	E	402	ALA
4	F	67	PRO
5	G	55	SER
5	G	128	VAL
5	H	583	PRO
5	I	93	ILE
5	I	136	VAL
5	I	447	SER
1	A	143	MET
1	A	147	MET

Continued on next page...

Continued from previous page...

Mol	Chain	Res	Type
1	A	173	TYR
1	A	224	LEU
1	A	933	ILE
2	C	219	ASP
3	D	308	PRO
3	D	350	SER
3	E	154	ILE
3	E	619	GLN
5	G	31	ASP
5	G	124	VAL
5	G	503	ASN
5	H	86	VAL
3	E	632	ILE
5	G	104	VAL
1	A	826	VAL
4	F	113	VAL
5	G	110	VAL
5	I	77	VAL
5	I	140	PRO
5	I	141	GLY
1	A	441	VAL
1	A	594	ILE
2	C	330	ILE
3	D	99	LEU
3	D	192	ILE
3	D	499	ILE
3	E	186	ILE
3	E	404	ILE
3	E	618	VAL
4	F	63	ILE
5	G	7	ILE
5	H	70	ILE
5	I	7	ILE
5	I	430	TRP
3	D	304	PRO
3	D	595	ILE
3	E	387	VAL
3	E	641	VAL
5	G	81	LEU
5	G	126	ILE
5	I	468	ASN
1	A	884	HIS

Continued on next page...

Continued from previous page...

Mol	Chain	Res	Type
3	D	141	ASN
5	G	117	ILE
5	G	581	THR
5	H	104	VAL
2	B	272	ILE
5	H	430	TRP

5.3.2 Protein sidechains ⓘ

In the following table, the Percentiles column shows the percent sidechain outliers of the chain as a percentile score with respect to all PDB entries followed by that with respect to all EM entries.

The Analysed column shows the number of residues for which the sidechain conformation was analysed, and the total number of residues.

Mol	Chain	Analysed	Rotameric	Outliers	Percentiles	
1	A	683/921 (74%)	681 (100%)	2 (0%)	92	96
2	B	252/295 (85%)	245 (97%)	7 (3%)	43	68
2	C	272/295 (92%)	272 (100%)	0	100	100
3	D	479/578 (83%)	477 (100%)	2 (0%)	91	95
3	E	440/578 (76%)	439 (100%)	1 (0%)	93	97
4	F	140/169 (83%)	140 (100%)	0	100	100
All	All	2266/2836 (80%)	2254 (100%)	12 (0%)	89	94

All (12) residues with a non-rotameric sidechain are listed below:

Mol	Chain	Res	Type
1	A	78	TYR
1	A	349	LEU
2	B	56	PHE
2	B	60	TYR
2	B	146	SER
2	B	238	LEU
2	B	239	ILE
2	B	273	SER
2	B	275	ILE
3	D	86	ARG
3	D	87	SER
3	E	199	LEU

Sometimes sidechains can be flipped to improve hydrogen bonding and reduce clashes. All (33) such sidechains are listed below:

Mol	Chain	Res	Type
1	A	19	ASN
1	A	111	GLN
1	A	130	ASN
1	A	174	HIS
1	A	240	GLN
1	A	447	ASN
1	A	504	GLN
1	A	682	GLN
1	A	684	ASN
1	A	688	ASN
1	A	712	ASN
1	A	784	GLN
1	A	944	HIS
2	B	23	ASN
2	B	26	ASN
2	B	205	ASN
2	B	233	GLN
2	B	266	ASN
2	B	305	HIS
2	C	35	ASN
2	C	52	ASN
2	C	74	HIS
2	C	201	ASN
2	C	329	ASN
3	D	9	GLN
3	D	69	GLN
3	D	119	ASN
3	D	281	ASN
3	D	578	ASN
3	E	107	GLN
3	E	582	ASN
4	F	77	ASN
4	F	129	ASN

5.3.3 RNA ⓘ

There are no RNA molecules in this entry.

5.4 Non-standard residues in protein, DNA, RNA chains [i](#)

There are no non-standard protein/DNA/RNA residues in this entry.

5.5 Carbohydrates [i](#)

There are no monosaccharides in this entry.

5.6 Ligand geometry [i](#)

There are no ligands in this entry.

5.7 Other polymers [i](#)

There are no such residues in this entry.

5.8 Polymer linkage issues [i](#)

There are no chain breaks in this entry.

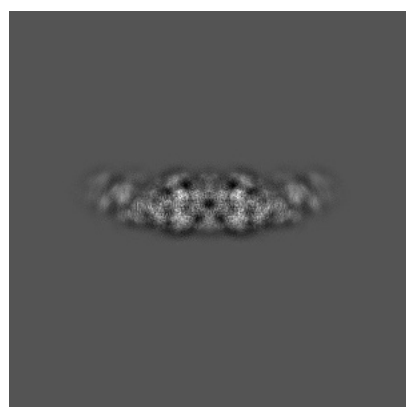
6 Map visualisation [i](#)

This section contains visualisations of the EMDB entry EMD-8064. These allow visual inspection of the internal detail of the map and identification of artifacts.

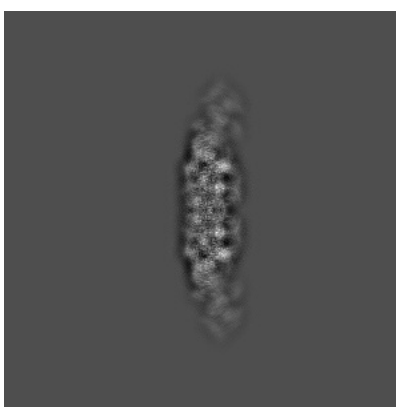
No raw map or half-maps were deposited for this entry and therefore no images, graphs, etc. pertaining to the raw map can be shown.

6.1 Orthogonal projections [i](#)

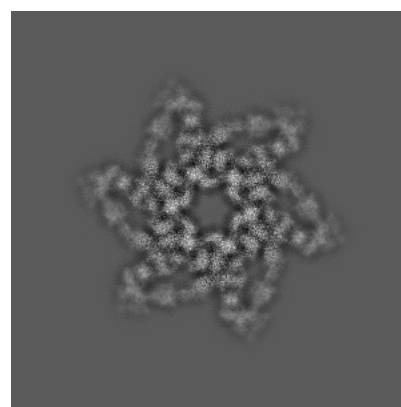
6.1.1 Primary map



X



Y

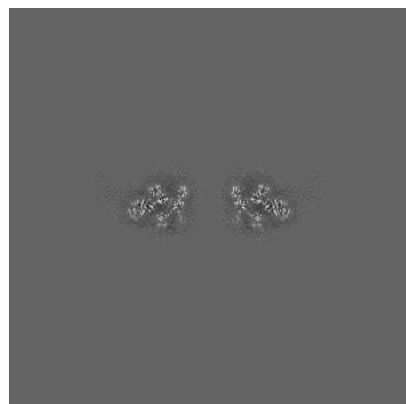


Z

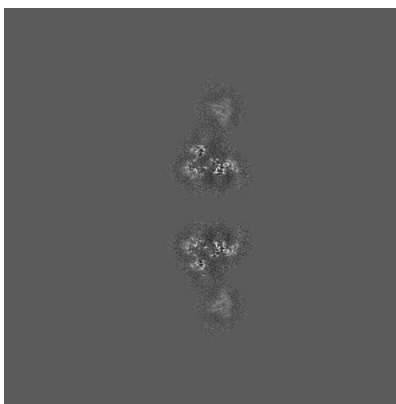
The images above show the map projected in three orthogonal directions.

6.2 Central slices [i](#)

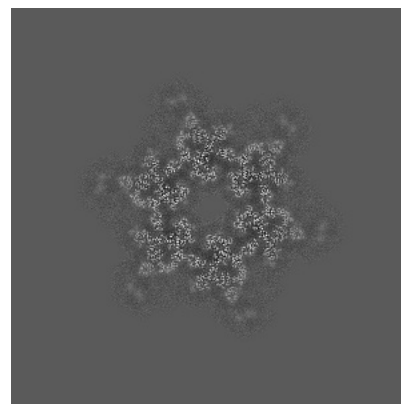
6.2.1 Primary map



X Index: 320



Y Index: 320

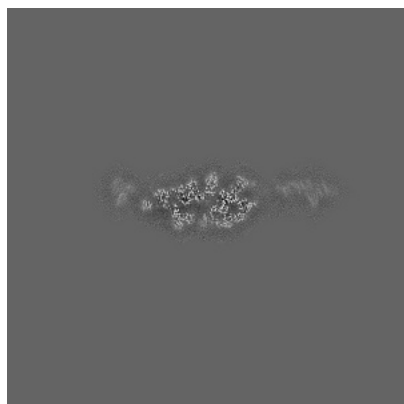


Z Index: 320

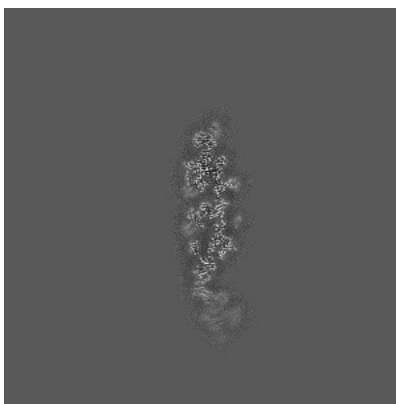
The images above show central slices of the map in three orthogonal directions.

6.3 Largest variance slices [i](#)

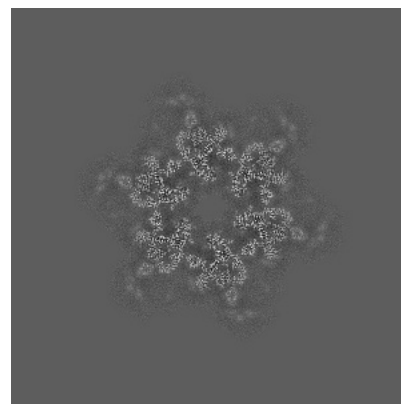
6.3.1 Primary map



X Index: 252



Y Index: 368



Z Index: 322

The images above show the largest variance slices of the map in three orthogonal directions.

6.4 Orthogonal surface views [i](#)

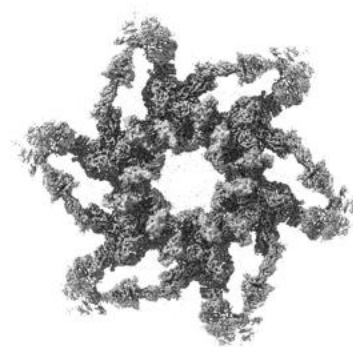
6.4.1 Primary map



X



Y



Z

The images above show the 3D surface view of the map at the recommended contour level 0.07. These images, in conjunction with the slice images, may facilitate assessment of whether an appropriate contour level has been provided.

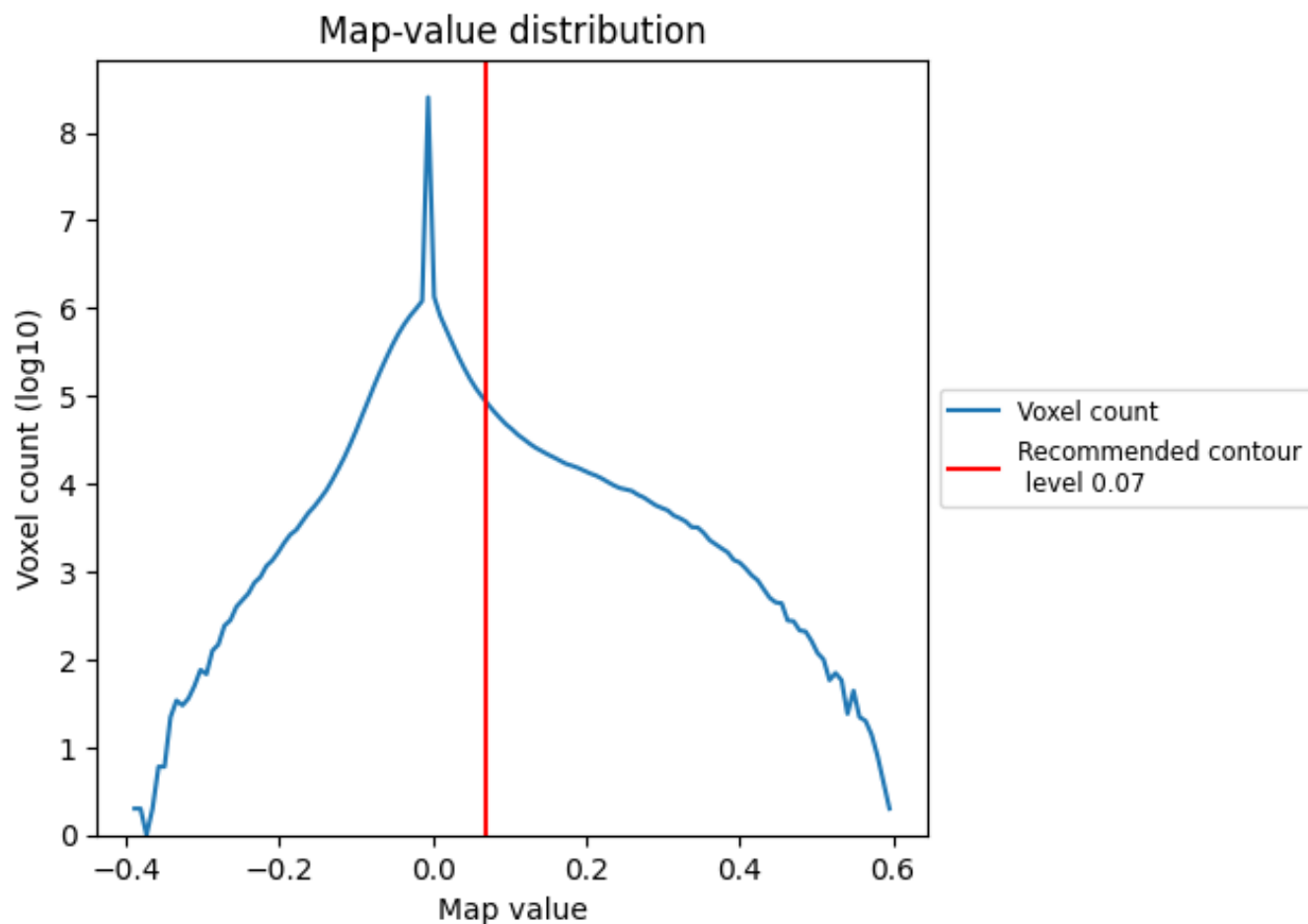
6.5 Mask visualisation

This section was not generated. No masks/segmentation were deposited.

7 Map analysis [i](#)

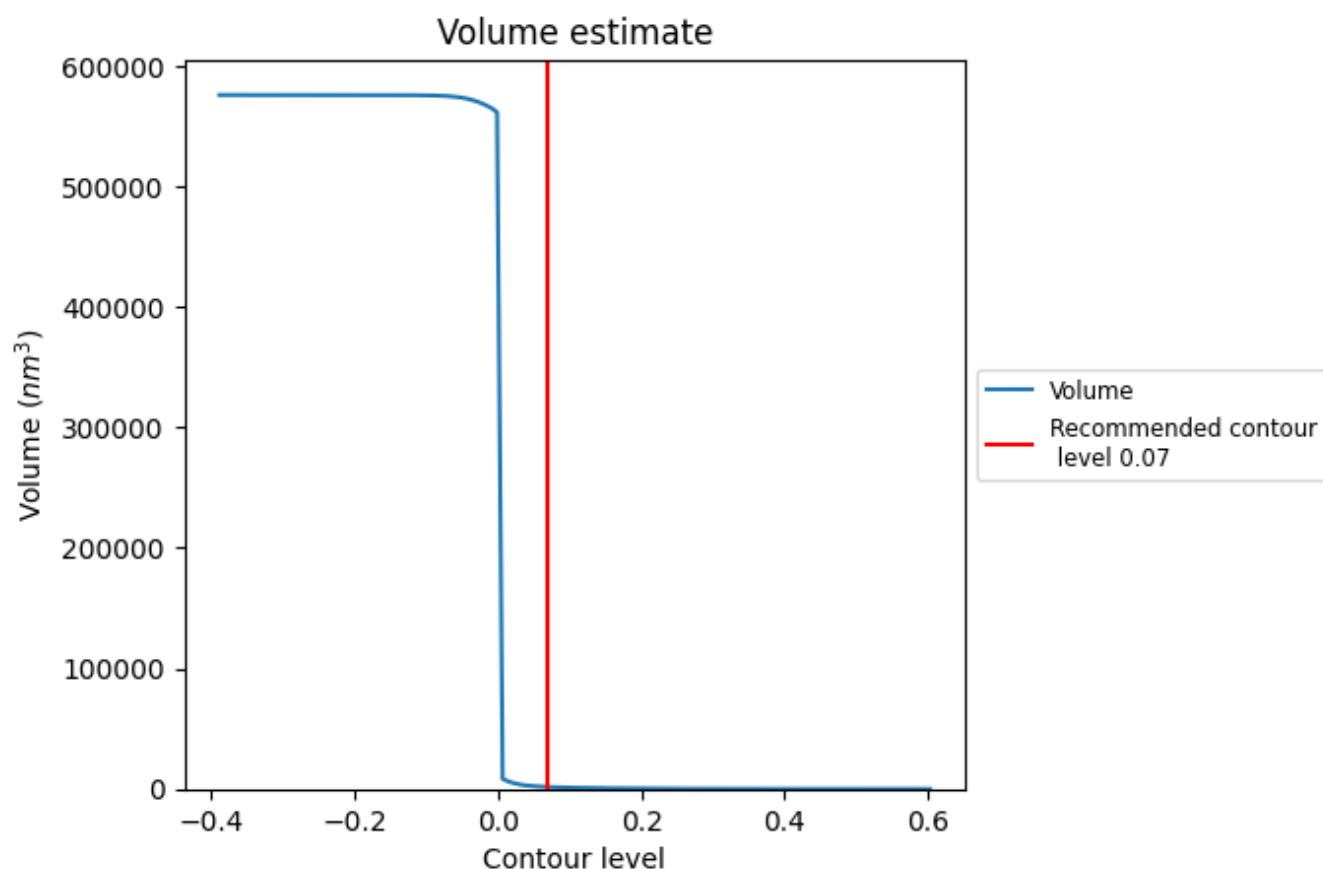
This section contains the results of statistical analysis of the map.

7.1 Map-value distribution [i](#)



The map-value distribution is plotted in 128 intervals along the x-axis. The y-axis is logarithmic. A spike in this graph at zero usually indicates that the volume has been masked.

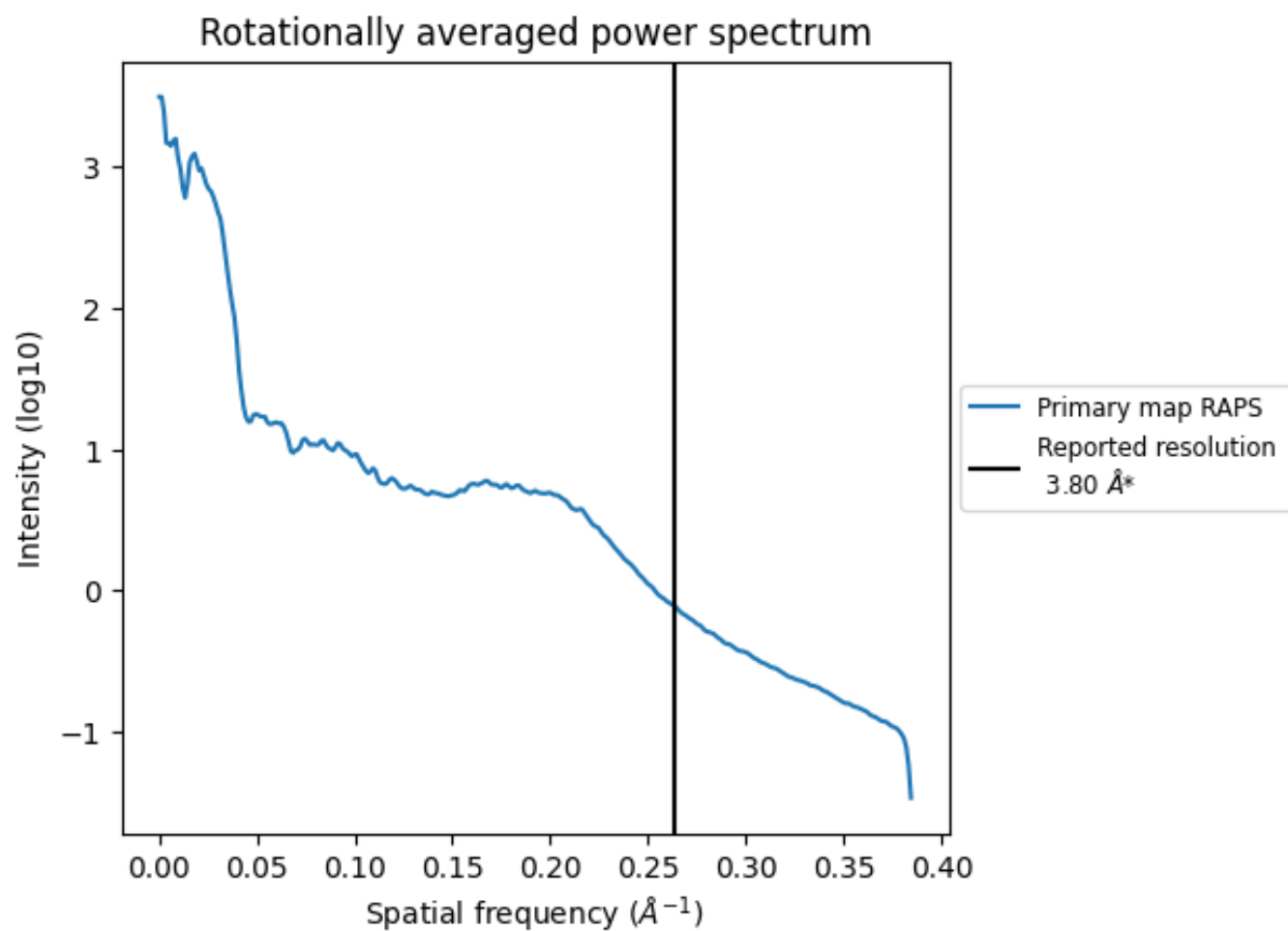
7.2 Volume estimate [i](#)



The volume at the recommended contour level is 1635 nm³; this corresponds to an approximate mass of 1477 kDa.

The volume estimate graph shows how the enclosed volume varies with the contour level. The recommended contour level is shown as a vertical line and the intersection between the line and the curve gives the volume of the enclosed surface at the given level.

7.3 Rotationally averaged power spectrum ⓘ

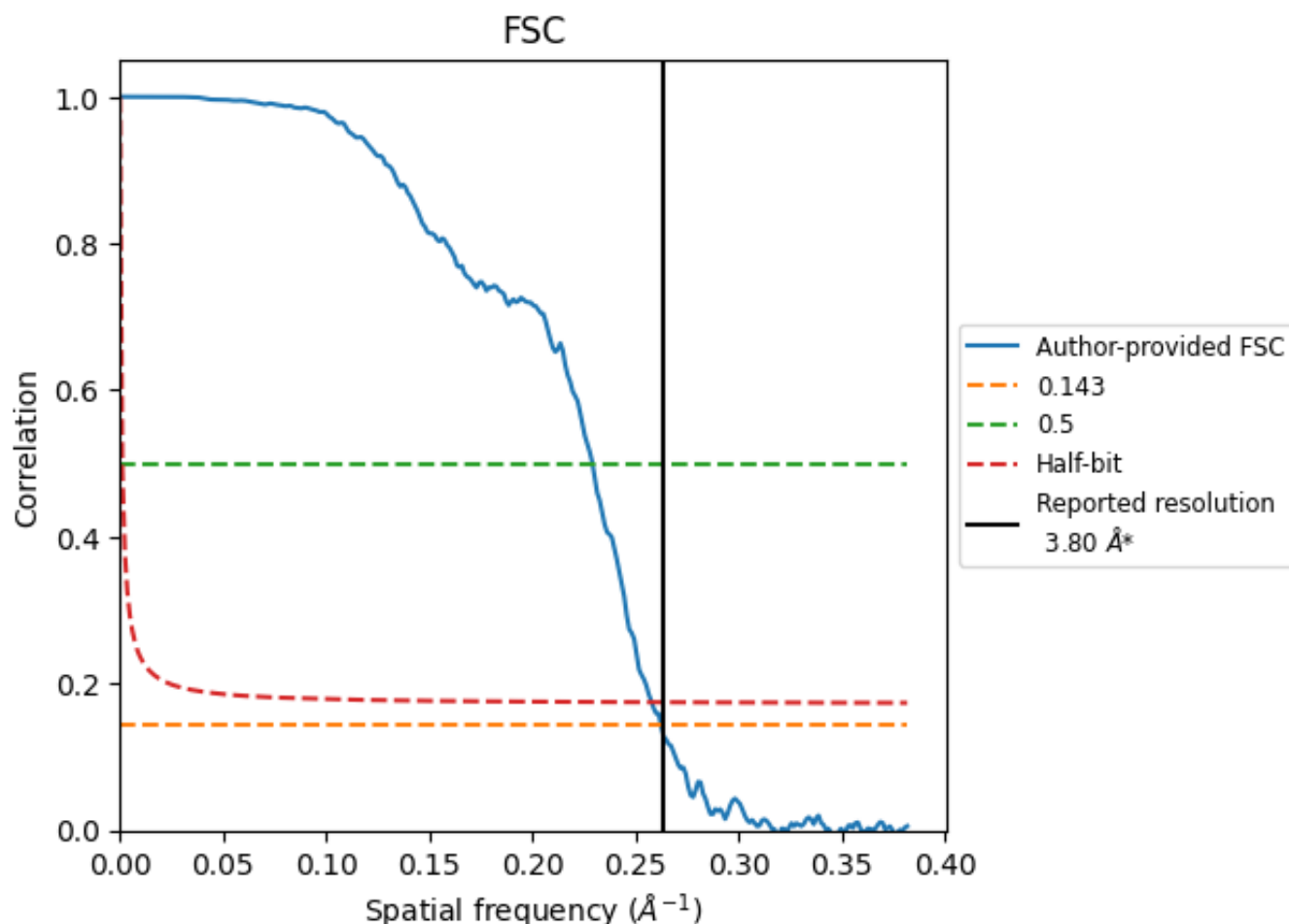


*Reported resolution corresponds to spatial frequency of 0.263 Å⁻¹

8 Fourier-Shell correlation [i](#)

Fourier-Shell Correlation (FSC) is the most commonly used method to estimate the resolution of single-particle and subtomogram-averaged maps. The shape of the curve depends on the imposed symmetry, mask and whether or not the two 3D reconstructions used were processed from a common reference. The reported resolution is shown as a black line. A curve is displayed for the half-bit criterion in addition to lines showing the 0.143 gold standard cut-off and 0.5 cut-off.

8.1 FSC [i](#)



*Reported resolution corresponds to spatial frequency of 0.263 Å⁻¹

8.2 Resolution estimates [i](#)

Resolution estimate (Å)	Estimation criterion (FSC cut-off)		
	0.143	0.5	Half-bit
Reported by author	3.80	-	-
Author-provided FSC curve	3.81	4.36	3.88
Unmasked-calculated*	-	-	-

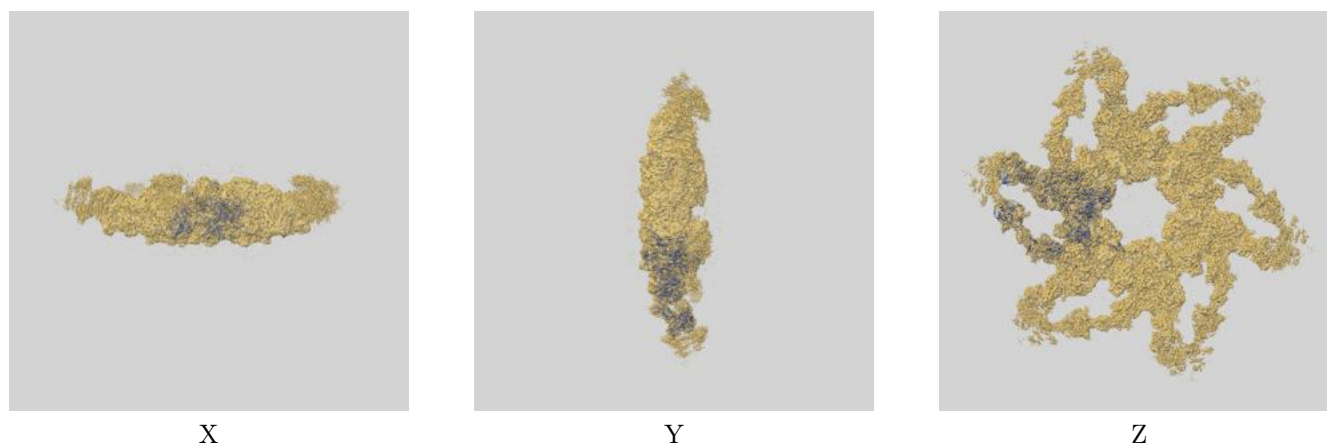
*Resolution estimate based on FSC curve calculated by comparison of deposited half-maps.

9 Map-model fit [i](#)

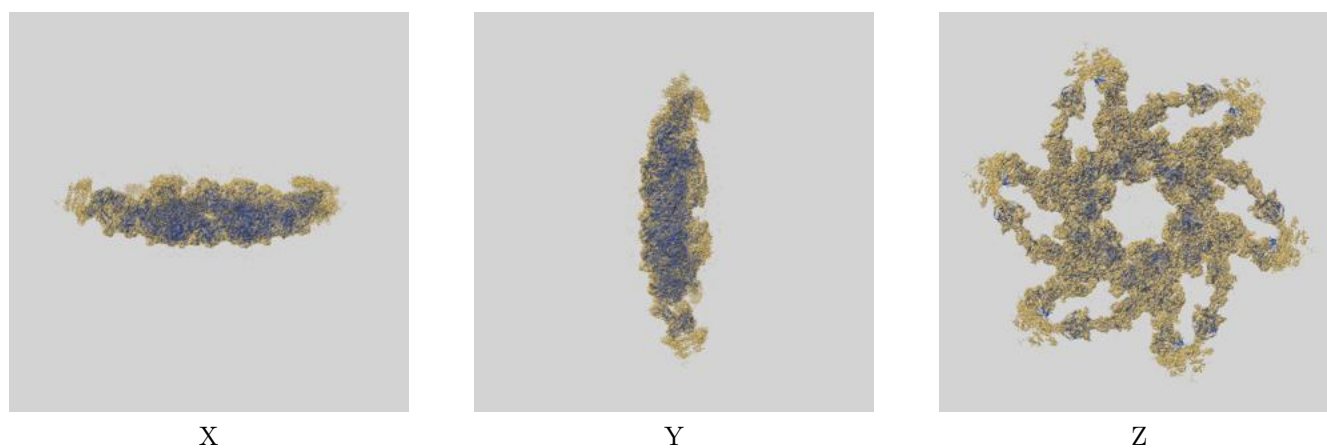
This section contains information regarding the fit between EMDB map EMD-8064 and PDB model 5HX2. Per-residue inclusion information can be found in section 3 on page 6.

9.1 Map-model overlays

9.1.1 Map-model overlay [i](#)

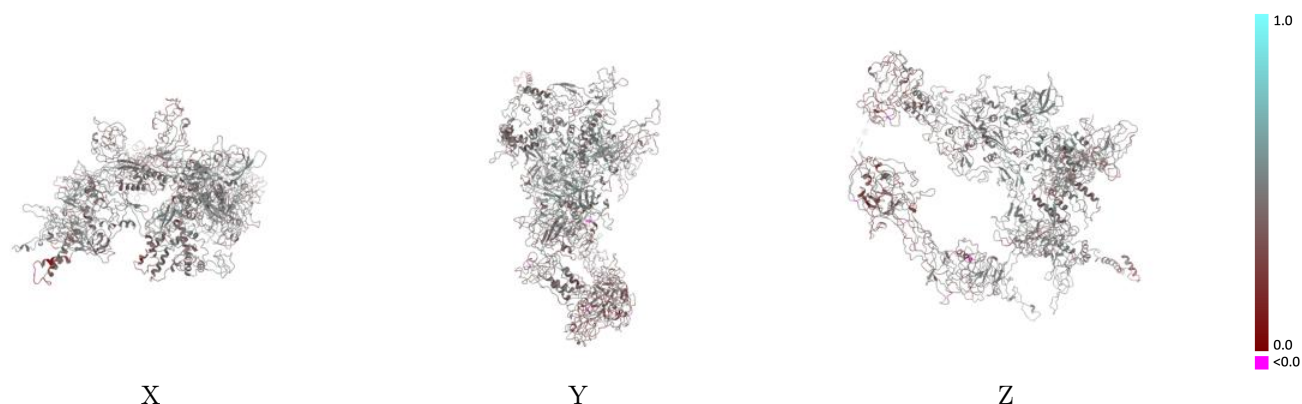


9.1.2 Map-model assembly overlay [i](#)



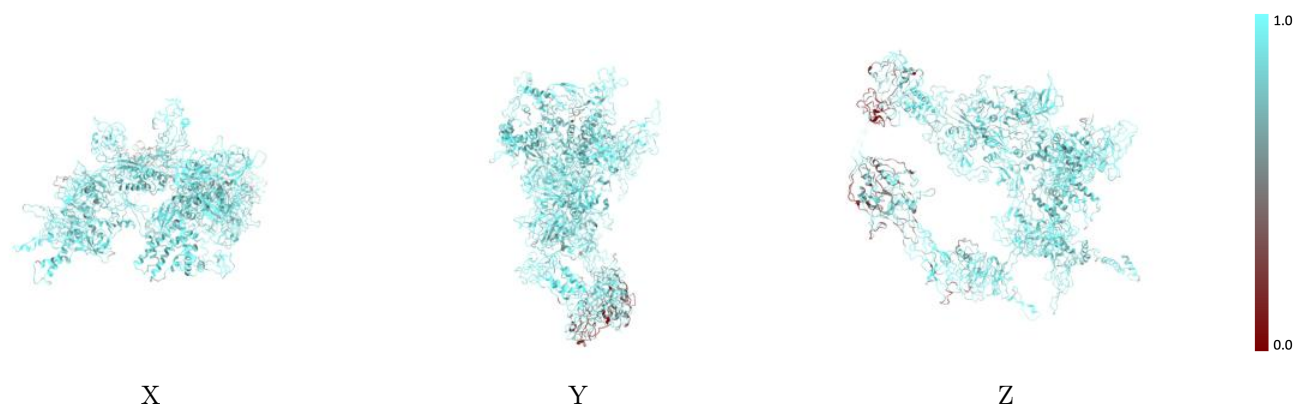
The images above show the 3D surface view of the map at the recommended contour level 0.07 at 50% transparency in yellow overlaid with a ribbon representation of the model coloured in blue. These images allow for the visual assessment of the quality of fit between the atomic model and the map.

9.2 Q-score mapped to coordinate model [i](#)



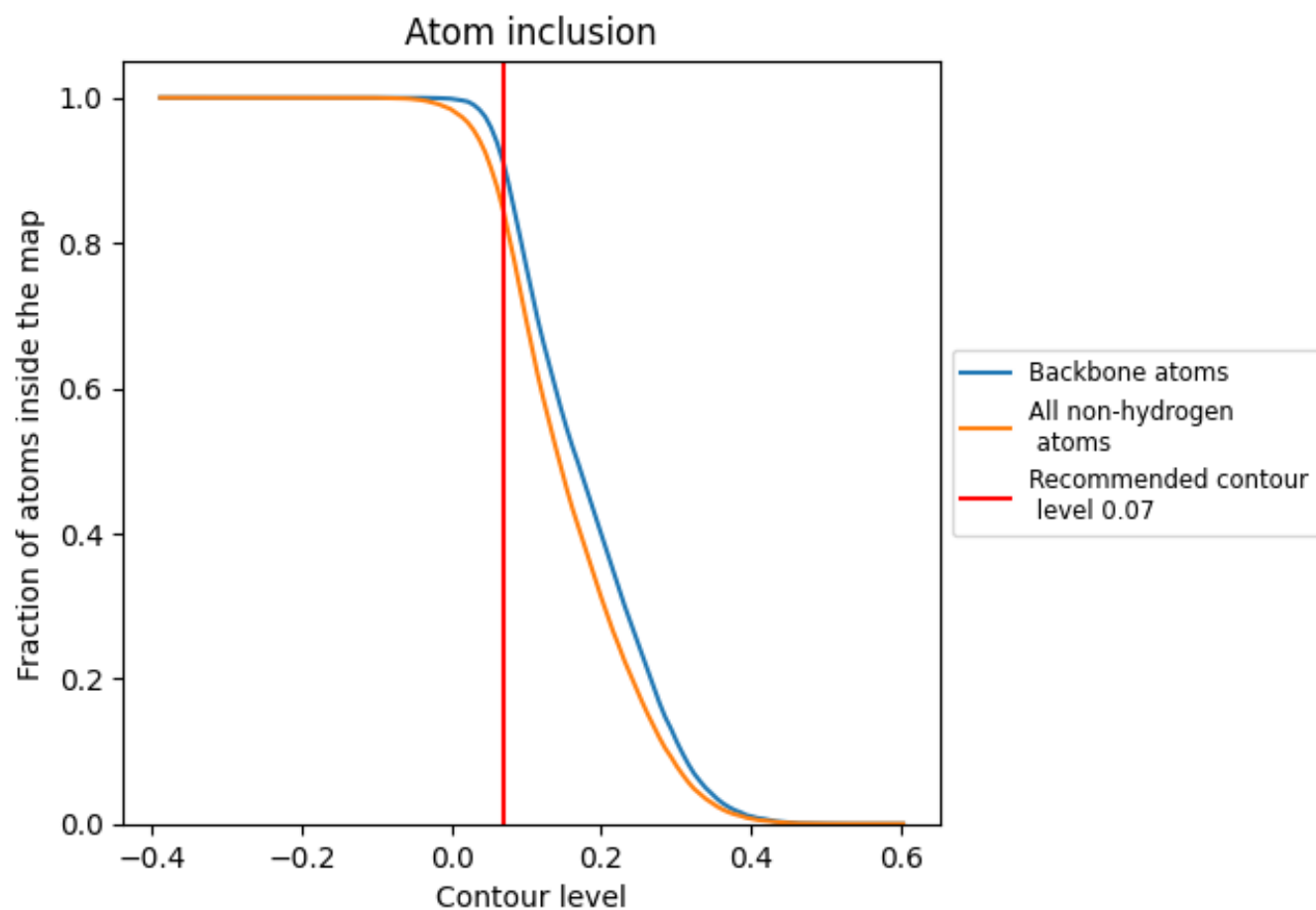
The images above show the model with each residue coloured according to its Q-score. This shows their resolvability in the map with higher Q-score values reflecting better resolvability. Please note: Q-score is calculating the resolvability of atoms, and thus high values are only expected at resolutions at which atoms can be resolved. Low Q-score values may therefore be expected for many entries.

9.3 Atom inclusion mapped to coordinate model [i](#)



The images above show the model with each residue coloured according to its atom inclusion. This shows to what extent they are inside the map at the recommended contour level (0.07).

9.4 Atom inclusion [i](#)



At the recommended contour level, 91% of all backbone atoms, 84% of all non-hydrogen atoms, are inside the map.

9.5 Map-model fit summary ⓘ

The table lists the average atom inclusion at the recommended contour level (0.07) and Q-score for the entire model and for each chain.

Chain	Atom inclusion	Q-score
All	<div><div></div>0.8419</div>	<div><div></div>0.4400</div>
A	<div><div></div>0.8885</div>	<div><div></div>0.4630</div>
B	<div><div></div>0.8602</div>	<div><div></div>0.4370</div>
C	<div><div></div>0.8639</div>	<div><div></div>0.4690</div>
D	<div><div></div>0.8545</div>	<div><div></div>0.4350</div>
E	<div><div></div>0.8495</div>	<div><div></div>0.4420</div>
F	<div><div></div>0.8830</div>	<div><div></div>0.4540</div>
G	<div><div></div>0.7568</div>	<div><div></div>0.3920</div>
H	<div><div></div>0.6805</div>	<div><div></div>0.3900</div>
I	<div><div></div>0.7291</div>	<div><div></div>0.3930</div>

1.0

0.0

<0.0