



wwPDB X-ray Structure Validation Summary Report ⓘ

Jun 7, 2020 – 12:27 am BST

PDB ID : 3HYW
Title : 3-D X-Ray structure of the sulfide:quinone oxidoreductase of the hyperthermophilic bacterium Aquifex aeolicus in complex with decylubiquinone
Authors : Marcia, M.; Ermler, U.; Peng, G.H.; Michel, H.
Deposited on : 2009-06-23
Resolution : 2.00 Å(reported)

This is a wwPDB X-ray Structure Validation Summary Report for a publicly released PDB entry.

We welcome your comments at validation@mail.wwpdb.org

A user guide is available at

<https://www.wwpdb.org/validation/2017/XrayValidationReportHelp>

with specific help available everywhere you see the ⓘ symbol.

The following versions of software and data (see [references ⓘ](#)) were used in the production of this report:

MolProbity	:	4.02b-467
Mogul	:	1.8.5 (274361), CSD as541be (2020)
Xtriage (Phenix)	:	1.13
EDS	:	2.11
buster-report	:	1.1.7 (2018)
Percentile statistics	:	20191225.v01 (using entries in the PDB archive December 25th 2019)
Refmac	:	5.8.0158
CCP4	:	7.0.044 (Gargrove)
Ideal geometry (proteins)	:	Engh & Huber (2001)
Ideal geometry (DNA, RNA)	:	Parkinson et al. (1996)
Validation Pipeline (wwPDB-VP)	:	2.11

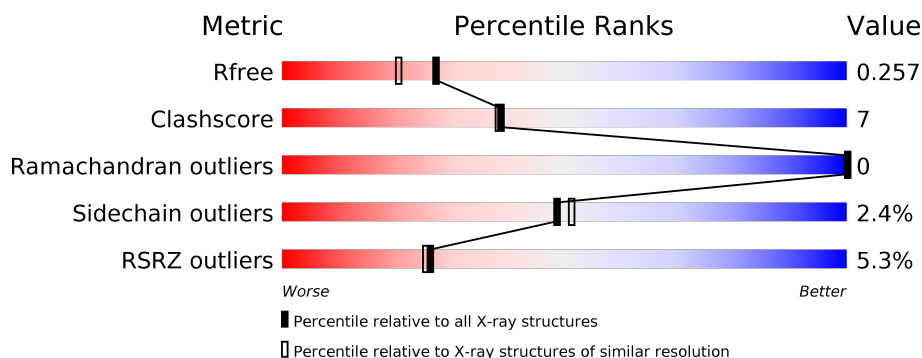
1 Overall quality at a glance

The following experimental techniques were used to determine the structure:

X-RAY DIFFRACTION

The reported resolution of this entry is 2.00 Å.

Percentile scores (ranging between 0-100) for global validation metrics of the entry are shown in the following graphic. The table shows the number of entries on which the scores are based.



Metric	Whole archive (#Entries)	Similar resolution (#Entries, resolution range(Å))
R_{free}	130704	8085 (2.00-2.00)
Clashscore	141614	9178 (2.00-2.00)
Ramachandran outliers	138981	9054 (2.00-2.00)
Sidechain outliers	138945	9053 (2.00-2.00)
RSRZ outliers	127900	7900 (2.00-2.00)

The table below summarises the geometric issues observed across the polymeric chains and their fit to the electron density. The red, orange, yellow and green segments on the lower bar indicate the fraction of residues that contain outliers for ≥ 3 , 2, 1 and 0 types of geometric quality criteria respectively. A grey segment represents the fraction of residues that are not modelled. The numeric value for each fraction is indicated below the corresponding segment, with a dot representing fractions $\leq 5\%$. The upper red bar (where present) indicates the fraction of residues that have poor fit to the electron density. The numeric value is given above the bar.

Mol	Chain	Length	Quality of chain
1	A	430	<div> <div>5%</div> <div> <div></div> <div>88%</div> <div>11%</div> </div> </div>
1	B	430	<div> <div>4%</div> <div> <div></div> <div>88%</div> <div>11%</div> </div> </div>
1	C	430	<div> <div>6%</div> <div> <div></div> <div>91%</div> <div>8%</div> </div> </div>
1	D	430	<div> <div>8%</div> <div> <div></div> <div>85%</div> <div>14%</div> </div> </div>
1	E	430	<div> <div>6%</div> <div> <div></div> <div>86%</div> <div>13%</div> </div> </div>
1	F	430	<div> <div>3%</div> <div> <div></div> <div>87%</div> <div>12%</div> </div> </div>

The following table lists non-polymeric compounds, carbohydrate monomers and non-standard residues in protein, DNA, RNA chains that are outliers for geometric or electron-density-fit criteria:

Mol	Type	Chain	Res	Chirality	Geometry	Clashes	Electron density
3	DCQ	A	500	-	-	X	X
3	DCQ	B	500	-	-	X	X
3	DCQ	C	500	-	-	X	X
3	DCQ	D	500	-	-	X	X
3	DCQ	E	500	-	-	X	X
3	DCQ	F	500	-	-	X	X
4	LMT	A	600	-	-	-	X
4	LMT	B	600	-	-	-	X
4	LMT	C	600	-	-	-	X
4	LMT	D	600	-	-	-	X
4	LMT	E	600	-	-	-	X
4	LMT	F	600	-	-	-	X
6	PS9	A	800	-	-	X	X
6	PS9	B	802[A]	-	-	-	X
6	PS9	B	802[B]	-	-	-	X
6	PS9	C	800	-	-	X	X
6	PS9	D	800	-	-	X	X
6	PS9	D	802	-	-	X	X
6	PS9	E	800	-	-	X	X
6	PS9	F	800	-	-	X	X
7	SO4	C	434	-	-	X	-
7	SO4	D	431	-	-	-	X
7	SO4	F	434	-	-	X	-

2 Entry composition ⓘ

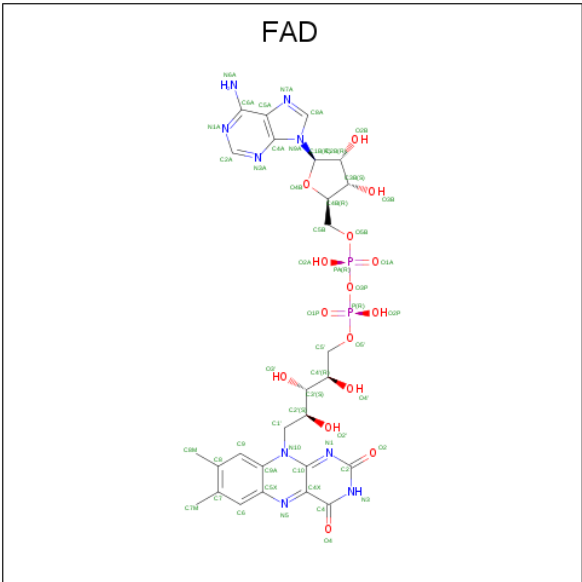
There are 8 unique types of molecules in this entry. The entry contains 22002 atoms, of which 0 are hydrogens and 0 are deuteriums.

In the tables below, the ZeroOcc column contains the number of atoms modelled with zero occupancy, the AltConf column contains the number of residues with at least one atom in alternate conformation and the Trace column contains the number of residues modelled with at most 2 atoms.

- Molecule 1 is a protein called Sulfide-quinone reductase.

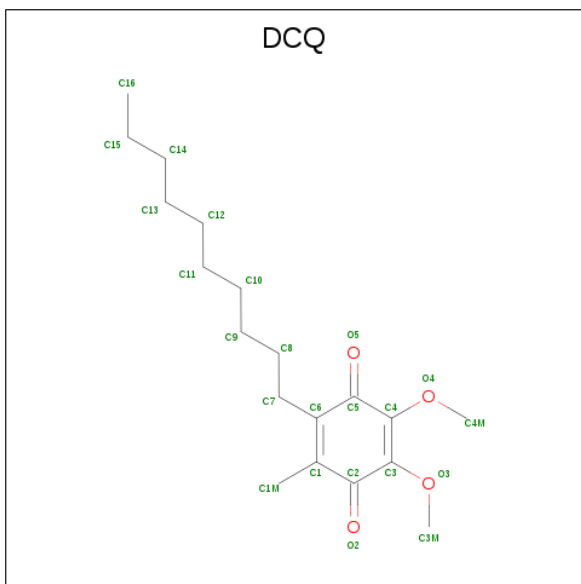
Mol	Chain	Residues	Atoms					ZeroOcc	AltConf	Trace
1	A	429	Total	C	N	O	S	0	3	0
			3339	2161	553	602	23			
1	B	429	Total	C	N	O	S	0	3	0
			3340	2161	553	602	24			
1	C	429	Total	C	N	O	S	0	3	0
			3339	2161	553	602	23			
1	D	429	Total	C	N	O	S	0	3	0
			3340	2161	553	602	24			
1	E	429	Total	C	N	O	S	0	3	0
			3339	2161	553	602	23			
1	F	429	Total	C	N	O	S	0	3	0
			3339	2161	553	602	23			

- Molecule 2 is FLAVIN-ADENINE DINUCLEOTIDE (three-letter code: FAD) (formula: C₂₇H₃₃N₉O₁₅P₂).



Mol	Chain	Residues	Atoms					ZeroOcc	AltConf
2	A	1	Total	C	N	O	P	0	0
			53	27	9	15	2		
2	B	1	Total	C	N	O	P	0	0
			53	27	9	15	2		
2	C	1	Total	C	N	O	P	0	0
			53	27	9	15	2		
2	D	1	Total	C	N	O	P	0	0
			53	27	9	15	2		
2	E	1	Total	C	N	O	P	0	0
			53	27	9	15	2		
2	F	1	Total	C	N	O	P	0	0
			53	27	9	15	2		

- Molecule 3 is 2-decyl-5,6-dimethoxy-3-methylcyclohexa-2,5-diene-1,4-dione (three-letter code: DCQ) (formula: C₁₉H₃₀O₄).



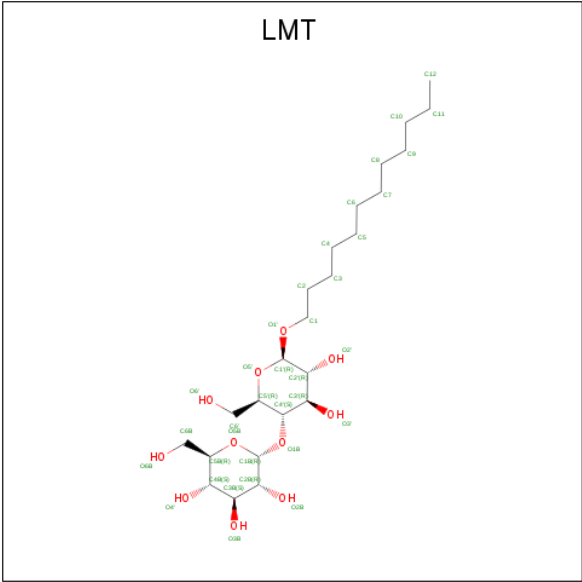
Mol	Chain	Residues	Atoms			ZeroOcc	AltConf
3	A	1	Total	C	O	0	0
			23	19	4		
3	B	1	Total	C	O	0	0
			23	19	4		
3	C	1	Total	C	O	0	0
			23	19	4		
3	D	1	Total	C	O	0	0
			23	19	4		
3	E	1	Total	C	O	0	0
			23	19	4		

Continued on next page...

Continued from previous page...

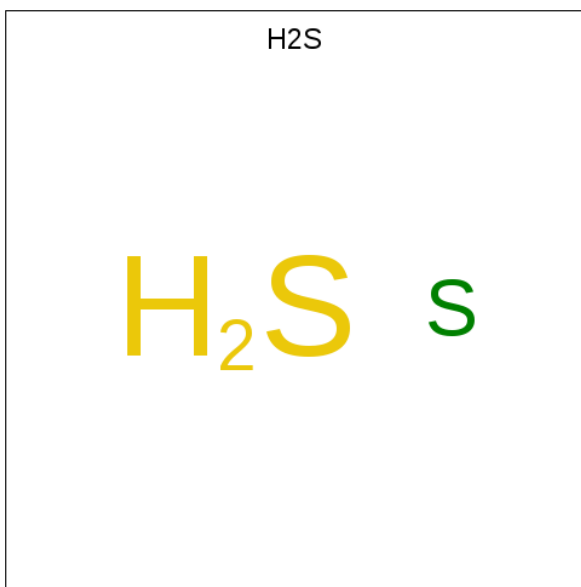
Mol	Chain	Residues	Atoms			ZeroOcc	AltConf
3	F	1	Total	C	O	0	0
			23	19	4		

- Molecule 4 is DODECYL-BETA-D-MALTOSE (three-letter code: LMT) (formula: C₂₄H₄₆O₁₁).



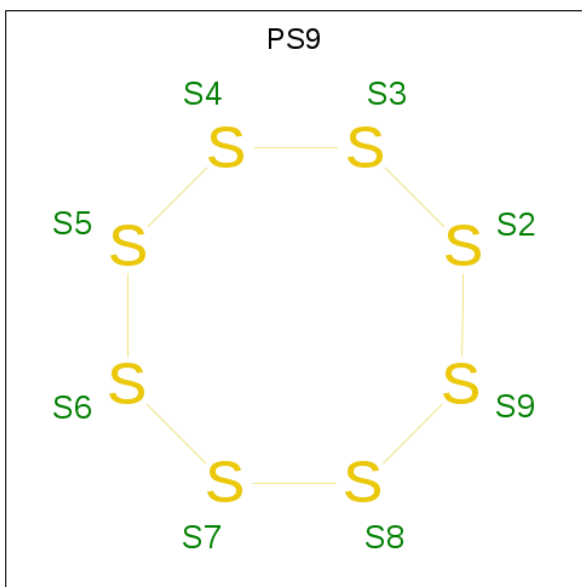
Mol	Chain	Residues	Atoms			ZeroOcc	AltConf
4	A	1	Total	C	O	0	0
			35	24	11		
4	B	1	Total	C	O	0	0
			35	24	11		
4	C	1	Total	C	O	0	0
			35	24	11		
4	D	1	Total	C	O	0	0
			35	24	11		
4	E	1	Total	C	O	0	0
			35	24	11		
4	F	1	Total	C	O	0	0
			35	24	11		

- Molecule 5 is HYDROSULFURIC ACID (three-letter code: H2S) (formula: H₂S).



Mol	Chain	Residues	Atoms	ZeroOcc	AltConf
5	A	1	Total S 1 1	0	0
5	B	1	Total S 1 1	0	0
5	C	1	Total S 1 1	0	0
5	D	1	Total S 1 1	0	0
5	E	1	Total S 1 1	0	0
5	F	1	Total S 1 1	0	0

- Molecule 6 is octathiocane (three-letter code: PS9) (formula: S₈).



Mol	Chain	Residues	Atoms	ZeroOcc	AltConf
6	A	1	Total S 8 8	0	0
6	B	1	Total S 1 1	0	0
6	B	1	Total S 3 3	0	1
6	C	1	Total S 6 6	0	0
6	D	1	Total S 2 2	0	0
6	D	1	Total S 1 1	0	0
6	E	1	Total S 8 8	0	0
6	F	1	Total S 8 8	0	0

- Molecule 7 is SULFATE ION (three-letter code: SO4) (formula: O₄S).



Mol	Chain	Residues	Atoms			ZeroOcc	AltConf
7	A	1	Total	O	S	0	0
			5	4	1		
7	A	1	Total	O	S	0	0
			5	4	1		
7	A	1	Total	O	S	0	0
			5	4	1		
7	A	1	Total	O	S	0	0
			5	4	1		
7	B	1	Total	O	S	0	0
			5	4	1		
7	B	1	Total	O	S	0	0
			5	4	1		
7	B	1	Total	O	S	0	0
			5	4	1		
7	C	1	Total	O	S	0	0
			5	4	1		
7	C	1	Total	O	S	0	0
			5	4	1		
7	C	1	Total	O	S	0	0
			5	4	1		
7	D	1	Total	O	S	0	0
			5	4	1		

Continued on next page...

Continued from previous page...

Mol	Chain	Residues	Atoms			ZeroOcc	AltConf
7	D	1	Total	O	S	0	0
			5	4	1		
7	D	1	Total	O	S	0	0
			5	4	1		
7	D	1	Total	O	S	0	0
			5	4	1		
7	E	1	Total	O	S	0	0
			5	4	1		
7	E	1	Total	O	S	0	0
			5	4	1		
7	E	1	Total	O	S	0	0
			5	4	1		
7	F	1	Total	O	S	0	0
			5	4	1		
7	F	1	Total	O	S	0	0
			5	4	1		
7	F	1	Total	O	S	0	0
			5	4	1		

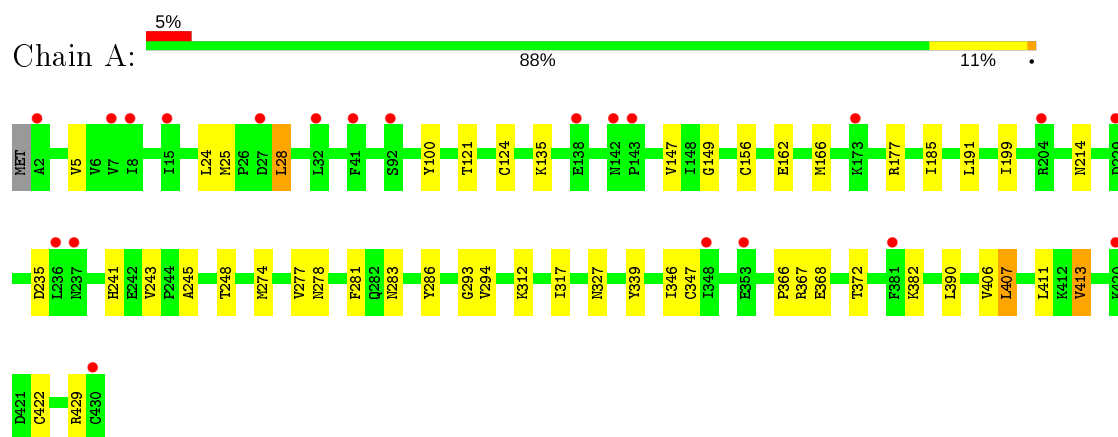
- Molecule 8 is water.

Mol	Chain	Residues	Atoms		ZeroOcc	AltConf
8	A	214	Total	O	0	0
			214	214		
8	B	197	Total	O	0	0
			197	197		
8	C	189	Total	O	0	0
			189	189		
8	D	160	Total	O	0	0
			160	160		
8	E	179	Total	O	0	0
			179	179		
8	F	198	Total	O	0	0
			198	198		

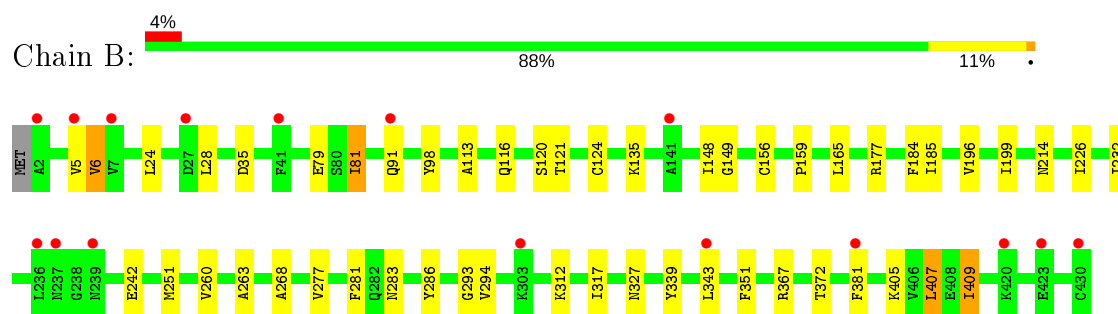
3 Residue-property plots [i](#)

These plots are drawn for all protein, RNA and DNA chains in the entry. The first graphic for a chain summarises the proportions of the various outlier classes displayed in the second graphic. The second graphic shows the sequence view annotated by issues in geometry and electron density. Residues are color-coded according to the number of geometric quality criteria for which they contain at least one outlier: green = 0, yellow = 1, orange = 2 and red = 3 or more. A red dot above a residue indicates a poor fit to the electron density ($RSRZ > 2$). Stretches of 2 or more consecutive residues without any outlier are shown as a green connector. Residues present in the sample, but not in the model, are shown in grey.

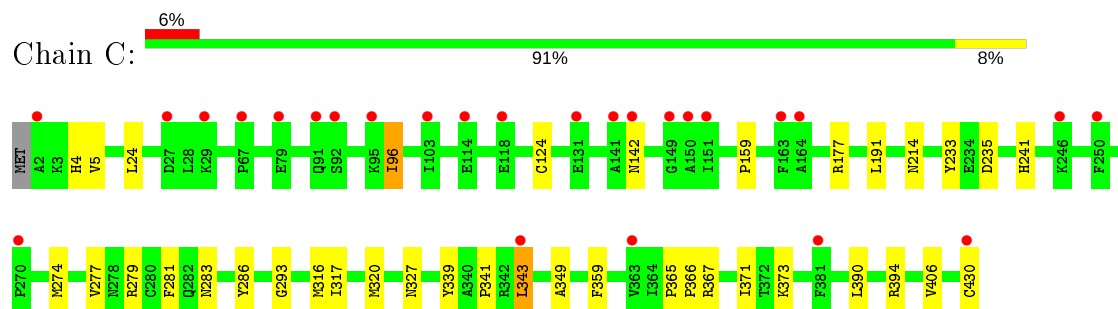
- Molecule 1: Sulfide-quinone reductase



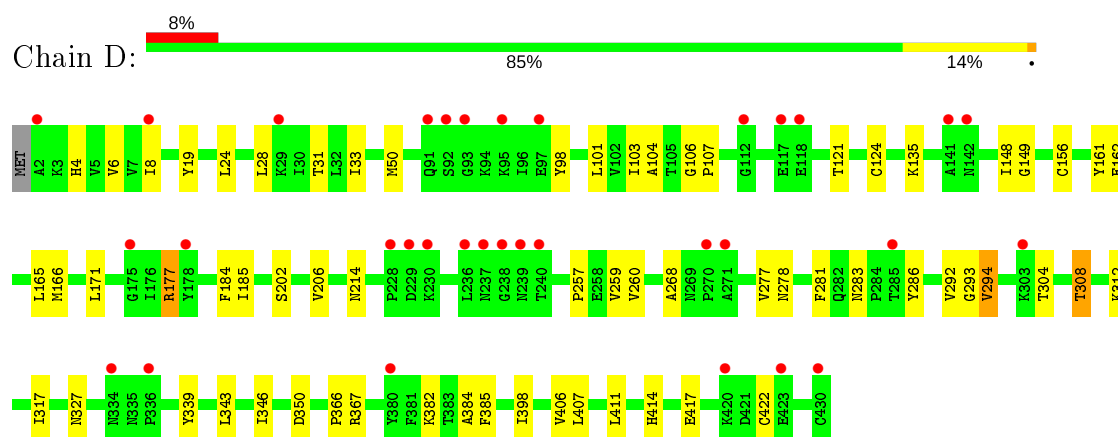
- Molecule 1: Sulfide-quinone reductase



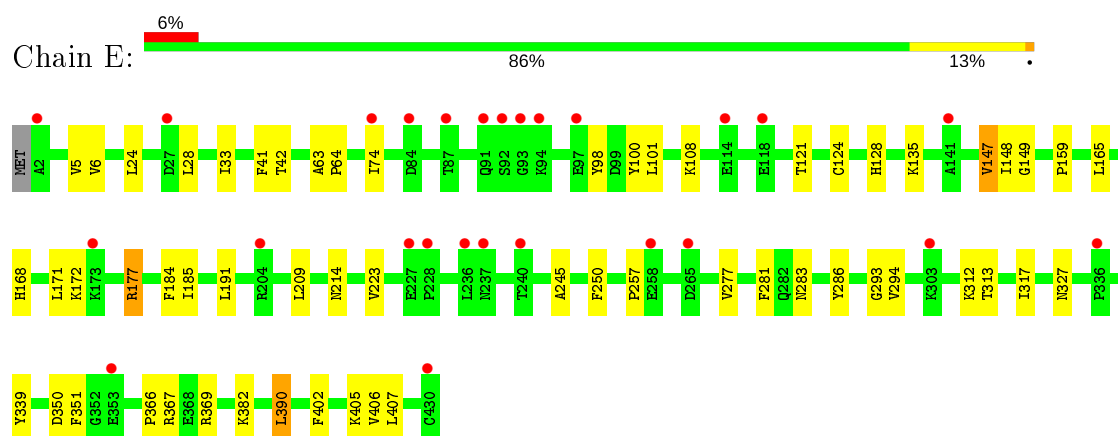
- Molecule 1: Sulfide-quinone reductase



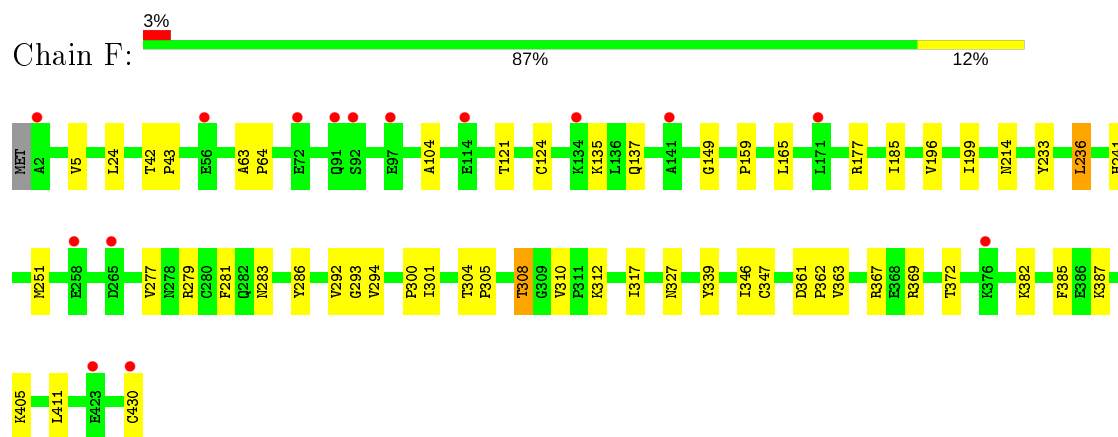
- Molecule 1: Sulfide-quinone reductase



- Molecule 1: Sulfide-quinone reductase



- Molecule 1: Sulfide-quinone reductase



4 Data and refinement statistics

Property	Value	Source
Space group	P 21 21 21	Depositor
Cell constants a, b, c, α , β , γ	110.78Å 154.01Å 175.55Å 90.00° 90.00° 90.00°	Depositor
Resolution (Å)	20.45 – 2.00 20.45 – 2.00	Depositor EDS
% Data completeness (in resolution range)	96.2 (20.45-2.00) 96.2 (20.45-2.00)	Depositor EDS
R_{merge}	(Not available)	Depositor
R_{sym}	(Not available)	Depositor
$\langle I/\sigma(I) \rangle$ ¹	1.67 (at 2.01Å)	Xtriage
Refinement program	REFMAC 5.2.0019	Depositor
R, R_{free}	0.200 , 0.236 0.227 , 0.257	Depositor DCC
R_{free} test set	9757 reflections (5.02%)	wwPDB-VP
Wilson B-factor (Å ²)	33.9	Xtriage
Anisotropy	0.041	Xtriage
Bulk solvent k_{sol} (e/Å ³), B_{sol} (Å ²)	0.37 , 43.9	EDS
L-test for twinning ²	$\langle L \rangle = 0.48$, $\langle L^2 \rangle = 0.31$	Xtriage
Estimated twinning fraction	No twinning to report.	Xtriage
F_o, F_c correlation	0.94	EDS
Total number of atoms	22002	wwPDB-VP
Average B, all atoms (Å ²)	36.0	wwPDB-VP

Xtriage's analysis on translational NCS is as follows: *The largest off-origin peak in the Patterson function is 2.40% of the height of the origin peak. No significant pseudotranslation is detected.*

¹Intensities estimated from amplitudes.

²Theoretical values of $\langle |L| \rangle$, $\langle L^2 \rangle$ for acentric reflections are 0.5, 0.333 respectively for untwinned datasets, and 0.375, 0.2 for perfectly twinned datasets.

5 Model quality [i](#)

5.1 Standard geometry [i](#)

Bond lengths and bond angles in the following residue types are not validated in this section: LMT, H2S, PS9, SO4, FAD, CSS, DCQ

The Z score for a bond length (or angle) is the number of standard deviations the observed value is removed from the expected value. A bond length (or angle) with $|Z| > 5$ is considered an outlier worth inspection. RMSZ is the root-mean-square of all Z scores of the bond lengths (or angles).

Mol	Chain	Bond lengths		Bond angles	
		RMSZ	# Z >5	RMSZ	# Z >5
1	A	0.41	0/3417	0.54	0/4637
1	B	0.40	0/3417	0.54	0/4637
1	C	0.40	0/3417	0.54	0/4637
1	D	0.39	0/3417	0.52	0/4637
1	E	0.39	0/3417	0.53	0/4637
1	F	0.39	0/3417	0.53	0/4637
All	All	0.40	0/20502	0.53	0/27822

There are no bond length outliers.

There are no bond angle outliers.

There are no chirality outliers.

There are no planarity outliers.

5.2 Too-close contacts [i](#)

In the following table, the Non-H and H(model) columns list the number of non-hydrogen atoms and hydrogen atoms in the chain respectively. The H(added) column lists the number of hydrogen atoms added and optimized by MolProbity. The Clashes column lists the number of clashes within the asymmetric unit, whereas Symm-Clashes lists symmetry related clashes.

Mol	Chain	Non-H	H(model)	H(added)	Clashes	Symm-Clashes
1	A	3339	0	3338	34	0
1	B	3340	0	3338	33	0
1	C	3339	0	3338	28	0
1	D	3340	0	3338	54	0
1	E	3339	0	3338	43	0
1	F	3339	0	3338	50	0
2	A	53	0	29	2	0

Continued on next page...

Continued from previous page...

Mol	Chain	Non-H	H(model)	H(added)	Clashes	Symm-Clashes
2	B	53	0	29	0	0
2	C	53	0	29	0	0
2	D	53	0	29	6	0
2	E	53	0	29	0	0
2	F	53	0	29	7	0
3	A	23	0	30	16	0
3	B	23	0	30	23	0
3	C	23	0	30	32	0
3	D	23	0	29	34	0
3	E	23	0	30	18	0
3	F	23	0	30	19	0
4	A	35	0	46	2	0
4	B	35	0	46	6	0
4	C	35	0	46	5	0
4	D	35	0	44	1	0
4	E	35	0	46	4	0
4	F	35	0	46	6	0
5	A	1	0	0	1	0
5	B	1	0	0	1	0
5	C	1	0	0	1	0
5	D	1	0	0	1	0
5	E	1	0	0	1	0
5	F	1	0	0	1	0
6	A	8	0	0	2	0
6	B	4	0	0	1	0
6	C	6	0	0	2	0
6	D	3	0	0	3	0
6	E	8	0	0	2	0
6	F	8	0	0	2	0
7	A	25	0	0	0	0
7	B	20	0	0	0	0
7	C	20	0	0	5	0
7	D	20	0	0	0	0
7	E	15	0	0	1	0
7	F	20	0	0	4	0
8	A	214	0	0	1	0
8	B	197	0	0	0	0
8	C	189	0	0	2	0
8	D	160	0	0	1	0
8	E	179	0	0	1	0
8	F	198	0	0	2	0
All	All	22002	0	20655	310	0

The all-atom clashscore is defined as the number of clashes found per 1000 atoms (including hydrogen atoms). The all-atom clashscore for this structure is 7.

The worst 5 of 310 close contacts within the same asymmetric unit are listed below, sorted by their clash magnitude.

Atom-1	Atom-2	Interatomic distance (Å)	Clash overlap (Å)
3:C:500:DCQ:C15	3:D:500:DCQ:H12	1.19	1.59
3:C:500:DCQ:H15	3:D:500:DCQ:C12	1.29	1.55
3:C:500:DCQ:C16	3:D:500:DCQ:H12	1.52	1.37
3:C:500:DCQ:H15	3:D:500:DCQ:C13	1.52	1.34
3:C:500:DCQ:H15	3:D:500:DCQ:C14	1.56	1.34

There are no symmetry-related clashes.

5.3 Torsion angles [i](#)

5.3.1 Protein backbone [i](#)

In the following table, the Percentiles column shows the percent Ramachandran outliers of the chain as a percentile score with respect to all X-ray entries followed by that with respect to entries of similar resolution.

The Analysed column shows the number of residues for which the backbone conformation was analysed, and the total number of residues.

Mol	Chain	Analysed	Favoured	Allowed	Outliers	Percentiles	
1	A	426/430 (99%)	419 (98%)	7 (2%)	0	100	100
1	B	426/430 (99%)	417 (98%)	9 (2%)	0	100	100
1	C	426/430 (99%)	419 (98%)	7 (2%)	0	100	100
1	D	426/430 (99%)	421 (99%)	5 (1%)	0	100	100
1	E	426/430 (99%)	417 (98%)	9 (2%)	0	100	100
1	F	426/430 (99%)	419 (98%)	7 (2%)	0	100	100
All	All	2556/2580 (99%)	2512 (98%)	44 (2%)	0	100	100

There are no Ramachandran outliers to report.

5.3.2 Protein sidechains [i](#)

In the following table, the Percentiles column shows the percent sidechain outliers of the chain as a percentile score with respect to all X-ray entries followed by that with respect to entries of similar

resolution.

The Analysed column shows the number of residues for which the sidechain conformation was analysed, and the total number of residues.

Mol	Chain	Analysed	Rotameric	Outliers	Percentiles	
1	A	355/355 (100%)	347 (98%)	8 (2%)	50	53
1	B	355/355 (100%)	345 (97%)	10 (3%)	43	44
1	C	355/355 (100%)	347 (98%)	8 (2%)	50	53
1	D	355/355 (100%)	346 (98%)	9 (2%)	47	49
1	E	355/355 (100%)	345 (97%)	10 (3%)	43	44
1	F	355/355 (100%)	349 (98%)	6 (2%)	60	65
All	All	2130/2130 (100%)	2079 (98%)	51 (2%)	49	51

5 of 51 residues with a non-rotameric sidechain are listed below:

Mol	Chain	Res	Type
1	C	191	LEU
1	D	165	LEU
1	F	165	LEU
1	C	390	LEU
1	D	171	LEU

Some sidechains can be flipped to improve hydrogen bonding and reduce clashes. 5 of 55 such sidechains are listed below:

Mol	Chain	Res	Type
1	C	327	ASN
1	D	241	HIS
1	F	214	ASN
1	C	379	HIS
1	D	128	HIS

5.3.3 RNA ⓘ

There are no RNA molecules in this entry.

5.4 Non-standard residues in protein, DNA, RNA chains ⓘ

24 non-standard protein/DNA/RNA residues are modelled in this entry.

In the following table, the Counts columns list the number of bonds (or angles) for which Mogul

statistics could be retrieved, the number of bonds (or angles) that are observed in the model and the number of bonds (or angles) that are defined in the Chemical Component Dictionary. The Link column lists molecule types, if any, to which the group is linked. The Z score for a bond length (or angle) is the number of standard deviations the observed value is removed from the expected value. A bond length (or angle) with $|Z| > 2$ is considered an outlier worth inspection. RMSZ is the root-mean-square of all Z scores of the bond lengths (or angles).

Mol	Type	Chain	Res	Link	Bond lengths			Bond angles		
					Counts	RMSZ	# Z > 2	Counts	RMSZ	# Z > 2
1	CSS	B	347[B]	6	4,6,7	1.09	0	1,6,8	1.36	0
1	CSS	B	347[A]	-	4,5,7	1.15	0	1,5,8	0.85	0
1	CSS	F	156[B]	6	4,6,7	0.96	0	1,6,8	0.05	0
1	CSS	F	156[A]	-	4,5,7	0.98	0	1,5,8	1.07	0
1	CSS	D	156[A]	-	4,5,7	1.03	0	1,5,8	1.11	0
1	CSS	A	347[A]	-	4,5,7	1.46	1 (25%)	1,5,8	2.42	1 (100%)
1	CSS	A	347[B]	-	4,5,7	1.40	1 (25%)	1,5,8	2.65	1 (100%)
1	CSS	D	156[B]	6	4,6,7	1.05	0	1,6,8	0.11	0
1	CSS	C	156[B]	6	4,6,7	1.03	0	1,6,8	0.08	0
1	CSS	C	156[A]	-	4,5,7	1.00	0	1,5,8	0.85	0
1	CSS	A	156[A]	-	4,5,7	1.07	0	1,5,8	0.40	0
1	CSS	A	156[B]	6	4,6,7	1.08	0	1,6,8	0.41	0
1	CSS	F	347[B]	-	4,5,7	1.33	0	1,5,8	1.76	0
1	CSS	F	347[A]	-	4,5,7	1.54	1 (25%)	1,5,8	1.87	0
1	CSS	B	156[B]	6	4,6,7	1.06	0	1,6,8	0.33	0
1	CSS	B	156[A]	-	4,5,7	1.02	0	1,5,8	0.96	0
1	CSS	E	347[A]	-	4,5,7	1.38	1 (25%)	1,5,8	1.90	0
1	CSS	E	347[B]	-	4,5,7	1.35	1 (25%)	1,5,8	2.20	1 (100%)
1	CSS	E	156[A]	-	4,5,7	1.06	0	1,5,8	0.58	0
1	CSS	D	347[A]	-	4,5,7	1.04	0	1,5,8	1.12	0
1	CSS	E	156[B]	6	4,6,7	1.02	0	1,6,8	0.54	0
1	CSS	C	347[B]	-	4,5,7	1.33	0	1,5,8	2.16	1 (100%)
1	CSS	D	347[B]	6	4,6,7	0.99	0	1,6,8	1.23	0
1	CSS	C	347[A]	-	4,5,7	1.48	1 (25%)	1,5,8	2.22	1 (100%)

In the following table, the Chirals column lists the number of chiral outliers, the number of chiral centers analysed, the number of these observed in the model and the number defined in the Chemical Component Dictionary. Similar counts are reported in the Torsion and Rings columns. '-' means no outliers of that kind were identified.

Mol	Type	Chain	Res	Link	Chirals	Torsions	Rings
1	CSS	B	347[B]	6	-	1/1/5/7	-
1	CSS	B	347[A]	-	-	0/1/4/7	-
1	CSS	F	156[B]	6	-	0/1/5/7	-

Continued on next page...

Continued from previous page...

Mol	Type	Chain	Res	Link	Chirals	Torsions	Rings
1	CSS	F	156[A]	-	-	1/1/4/7	-
1	CSS	D	156[A]	-	-	1/1/4/7	-
1	CSS	A	347[A]	-	-	0/1/4/7	-
1	CSS	A	347[B]	-	-	1/1/4/7	-
1	CSS	D	156[B]	6	-	0/1/5/7	-
1	CSS	C	156[B]	6	-	0/1/5/7	-
1	CSS	C	156[A]	-	-	1/1/4/7	-
1	CSS	A	156[A]	-	-	1/1/4/7	-
1	CSS	A	156[B]	6	-	0/1/5/7	-
1	CSS	F	347[B]	-	-	1/1/4/7	-
1	CSS	F	347[A]	-	-	0/1/4/7	-
1	CSS	B	156[B]	6	-	0/1/5/7	-
1	CSS	B	156[A]	-	-	1/1/4/7	-
1	CSS	E	347[A]	-	-	0/1/4/7	-
1	CSS	E	347[B]	-	-	1/1/4/7	-
1	CSS	E	156[A]	-	-	1/1/4/7	-
1	CSS	D	347[A]	-	-	0/1/4/7	-
1	CSS	E	156[B]	6	-	0/1/5/7	-
1	CSS	C	347[B]	-	-	1/1/4/7	-
1	CSS	D	347[B]	6	-	1/1/5/7	-
1	CSS	C	347[A]	-	-	0/1/4/7	-

The worst 5 of 6 bond length outliers are listed below:

Mol	Chain	Res	Type	Atoms	Z	Observed(Å)	Ideal(Å)
1	F	347[A]	CSS	CB-SG	-2.50	1.76	1.81
1	A	347[A]	CSS	CB-SG	-2.35	1.76	1.81
1	C	347[A]	CSS	CB-SG	-2.31	1.76	1.81
1	A	347[B]	CSS	CB-SG	-2.18	1.76	1.81
1	E	347[A]	CSS	CB-SG	-2.15	1.77	1.81

All (5) bond angle outliers are listed below:

Mol	Chain	Res	Type	Atoms	Z	Observed(°)	Ideal(°)
1	A	347[B]	CSS	CA-CB-SG	-2.65	108.74	114.44
1	A	347[A]	CSS	CA-CB-SG	-2.42	109.22	114.44
1	C	347[A]	CSS	CA-CB-SG	-2.22	109.65	114.44
1	E	347[B]	CSS	CA-CB-SG	-2.20	109.69	114.44
1	C	347[B]	CSS	CA-CB-SG	-2.16	109.78	114.44

There are no chirality outliers.

5 of 12 torsion outliers are listed below:

Mol	Chain	Res	Type	Atoms
1	B	347[B]	CSS	N-CA-CB-SG
1	A	347[B]	CSS	N-CA-CB-SG
1	F	347[B]	CSS	N-CA-CB-SG
1	E	347[B]	CSS	N-CA-CB-SG
1	C	347[B]	CSS	N-CA-CB-SG

There are no ring outliers.

6 monomers are involved in 6 short contacts:

Mol	Chain	Res	Type	Clashes	Symm-Clashes
1	D	156[A]	CSS	1	0
1	A	347[B]	CSS	1	0
1	A	156[A]	CSS	1	0
1	F	347[B]	CSS	1	0
1	F	347[A]	CSS	1	0
1	B	156[A]	CSS	1	0

5.5 Carbohydrates [i](#)

There are no carbohydrates in this entry.

5.6 Ligand geometry [i](#)

Of 57 ligands modelled in this entry, 8 are modelled with single atom - leaving 49 for Mogul analysis.

In the following table, the Counts columns list the number of bonds (or angles) for which Mogul statistics could be retrieved, the number of bonds (or angles) that are observed in the model and the number of bonds (or angles) that are defined in the Chemical Component Dictionary. The Link column lists molecule types, if any, to which the group is linked. The Z score for a bond length (or angle) is the number of standard deviations the observed value is removed from the expected value. A bond length (or angle) with $|Z| > 2$ is considered an outlier worth inspection. RMSZ is the root-mean-square of all Z scores of the bond lengths (or angles).

Mol	Type	Chain	Res	Link	Bond lengths			Bond angles		
					Counts	RMSZ	$\# Z > 2$	Counts	RMSZ	$\# Z > 2$
3	DCQ	C	500	-	23,23,23	2.25	7 (30%)	26,29,29	0.96	1 (3%)
3	DCQ	D	500	-	23,23,23	2.25	7 (30%)	26,29,29	1.01	1 (3%)
3	DCQ	F	500	-	23,23,23	2.37	8 (34%)	26,29,29	1.04	2 (7%)
2	FAD	F	441	5	51,58,58	1.08	3 (5%)	60,89,89	1.62	8 (13%)
4	LMT	A	600	-	36,36,36	0.49	0	47,47,47	0.69	1 (2%)

Mol	Type	Chain	Res	Link	Bond lengths			Bond angles		
					Counts	RMSZ	# Z > 2	Counts	RMSZ	# Z > 2
7	SO4	F	434	-	4,4,4	0.14	0	6,6,6	0.13	0
7	SO4	A	431	-	4,4,4	0.15	0	6,6,6	0.06	0
7	SO4	B	432	-	4,4,4	0.15	0	6,6,6	0.19	0
6	PS9	F	800	1	8,8,8	0.87	0	8,8,8	1.27	0
6	PS9	A	800	1	8,8,8	0.90	0	8,8,8	1.14	0
4	LMT	B	600	-	36,36,36	0.51	0	47,47,47	0.76	1 (2%)
7	SO4	A	434	-	4,4,4	0.13	0	6,6,6	0.06	0
7	SO4	B	431	-	4,4,4	0.15	0	6,6,6	0.07	0
4	LMT	F	600	-	36,36,36	0.54	0	47,47,47	0.83	1 (2%)
7	SO4	C	431	-	4,4,4	0.15	0	6,6,6	0.06	0
6	PS9	B	802[B]	-	0,1,8	0.00	-	-	-	-
2	FAD	D	441	5	51,58,58	1.09	2 (3%)	60,89,89	1.63	8 (13%)
6	PS9	B	802[A]	-	0,1,8	0.00	-	-	-	-
7	SO4	D	433	-	4,4,4	0.15	0	6,6,6	0.06	0
7	SO4	B	433	-	4,4,4	0.15	0	6,6,6	0.05	0
7	SO4	D	434	-	4,4,4	0.16	0	6,6,6	0.12	0
7	SO4	E	434	-	4,4,4	0.14	0	6,6,6	0.11	0
7	SO4	C	434	-	4,4,4	0.15	0	6,6,6	0.07	0
2	FAD	A	441	5	51,58,58	1.11	2 (3%)	60,89,89	1.56	7 (11%)
2	FAD	C	441	5	51,58,58	1.03	1 (1%)	60,89,89	1.68	8 (13%)
3	DCQ	E	500	-	23,23,23	2.24	7 (30%)	26,29,29	0.99	0
7	SO4	A	432	-	4,4,4	0.17	0	6,6,6	0.12	0
7	SO4	C	432	-	4,4,4	0.17	0	6,6,6	0.12	0
7	SO4	F	432	-	4,4,4	0.17	0	6,6,6	0.08	0
7	SO4	F	431	-	4,4,4	0.15	0	6,6,6	0.14	0
7	SO4	D	431	-	4,4,4	0.15	0	6,6,6	0.08	0
6	PS9	E	800	1	8,8,8	0.92	0	8,8,8	0.96	0
4	LMT	D	600	-	36,36,36	0.49	0	47,47,47	0.88	2 (4%)
7	SO4	D	432	-	4,4,4	0.14	0	6,6,6	0.15	0
3	DCQ	B	500	-	23,23,23	2.31	7 (30%)	26,29,29	0.75	0
4	LMT	C	600	-	36,36,36	0.55	1 (2%)	47,47,47	0.73	1 (2%)
7	SO4	C	433	-	4,4,4	0.11	0	6,6,6	0.28	0
2	FAD	B	441	5	51,58,58	1.06	2 (3%)	60,89,89	1.52	7 (11%)
4	LMT	E	600	-	36,36,36	0.51	0	47,47,47	0.91	2 (4%)
7	SO4	B	434	-	4,4,4	0.14	0	6,6,6	0.15	0
6	PS9	C	800	1	3,5,8	1.61	0	2,4,8	0.85	0
7	SO4	A	433	-	4,4,4	0.14	0	6,6,6	0.21	0
6	PS9	D	800	1	0,1,8	0.00	-	-	-	-
7	SO4	E	433	-	4,4,4	0.12	0	6,6,6	0.20	0
2	FAD	E	441	5	51,58,58	1.10	2 (3%)	60,89,89	1.61	7 (11%)

Mol	Type	Chain	Res	Link	Bond lengths			Bond angles		
					Counts	RMSZ	# Z > 2	Counts	RMSZ	# Z > 2
7	SO4	F	433	-	4,4,4	0.13	0	6,6,6	0.26	0
7	SO4	E	432	-	4,4,4	0.15	0	6,6,6	0.10	0
3	DCQ	A	500	-	23,23,23	2.24	7 (30%)	26,29,29	0.94	1 (3%)
7	SO4	A	435	-	4,4,4	0.15	0	6,6,6	0.06	0

In the following table, the Chirals column lists the number of chiral outliers, the number of chiral centers analysed, the number of these observed in the model and the number defined in the Chemical Component Dictionary. Similar counts are reported in the Torsion and Rings columns. '-' means no outliers of that kind were identified.

Mol	Type	Chain	Res	Link	Chirals	Torsions	Rings
3	DCQ	C	500	-	-	7/14/38/38	0/1/1/1
3	DCQ	D	500	-	-	6/14/38/38	0/1/1/1
3	DCQ	F	500	-	-	7/14/38/38	0/1/1/1
2	FAD	F	441	5	-	4/30/50/50	0/6/6/6
4	LMT	A	600	-	-	8/21/61/61	0/2/2/2
6	PS9	F	800	1	-	-	0/1/1/1
6	PS9	A	800	1	-	-	0/1/1/1
4	LMT	B	600	-	-	10/21/61/61	0/2/2/2
2	FAD	D	441	5	-	5/30/50/50	0/6/6/6
2	FAD	A	441	5	-	1/30/50/50	0/6/6/6
2	FAD	C	441	5	-	3/30/50/50	0/6/6/6
3	DCQ	E	500	-	-	3/14/38/38	0/1/1/1
6	PS9	E	800	1	-	-	0/1/1/1
4	LMT	D	600	-	-	10/21/61/61	0/2/2/2
3	DCQ	B	500	-	-	11/14/38/38	0/1/1/1
4	LMT	C	600	-	-	13/21/61/61	0/2/2/2
2	FAD	B	441	5	-	1/30/50/50	0/6/6/6
4	LMT	E	600	-	-	18/21/61/61	0/2/2/2
6	PS9	C	800	1	-	1/3/3/8	-
2	FAD	E	441	5	-	3/30/50/50	0/6/6/6
4	LMT	F	600	-	-	11/21/61/61	0/2/2/2
3	DCQ	A	500	-	-	5/14/38/38	0/1/1/1

The worst 5 of 56 bond length outliers are listed below:

Mol	Chain	Res	Type	Atoms	Z	Observed(Å)	Ideal(Å)
3	B	500	DCQ	O5-C5	6.32	1.37	1.23

Continued on next page...

Continued from previous page...

Mol	Chain	Res	Type	Atoms	Z	Observed(Å)	Ideal(Å)
3	F	500	DCQ	O5-C5	6.21	1.36	1.23
3	D	500	DCQ	O5-C5	6.21	1.36	1.23
3	C	500	DCQ	O5-C5	6.20	1.36	1.23
3	B	500	DCQ	O2-C2	6.15	1.36	1.23

The worst 5 of 58 bond angle outliers are listed below:

Mol	Chain	Res	Type	Atoms	Z	Observed(°)	Ideal(°)
2	D	441	FAD	C4-N3-C2	6.44	120.58	115.14
2	E	441	FAD	C4-N3-C2	6.22	120.39	115.14
2	C	441	FAD	C4-N3-C2	6.16	120.34	115.14
2	A	441	FAD	C4-N3-C2	5.78	120.02	115.14
2	F	441	FAD	C4-N3-C2	5.62	119.89	115.14

There are no chirality outliers.

5 of 127 torsion outliers are listed below:

Mol	Chain	Res	Type	Atoms
2	F	441	FAD	O4B-C4B-C5B-O5B
4	A	600	LMT	C2-C1-O1'-C1'
4	B	600	LMT	C2'-C1'-O1'-C1
6	C	800	PS9	S2-S3-S4-S5
3	B	500	DCQ	C5-C6-C7-C8

There are no ring outliers.

26 monomers are involved in 125 short contacts:

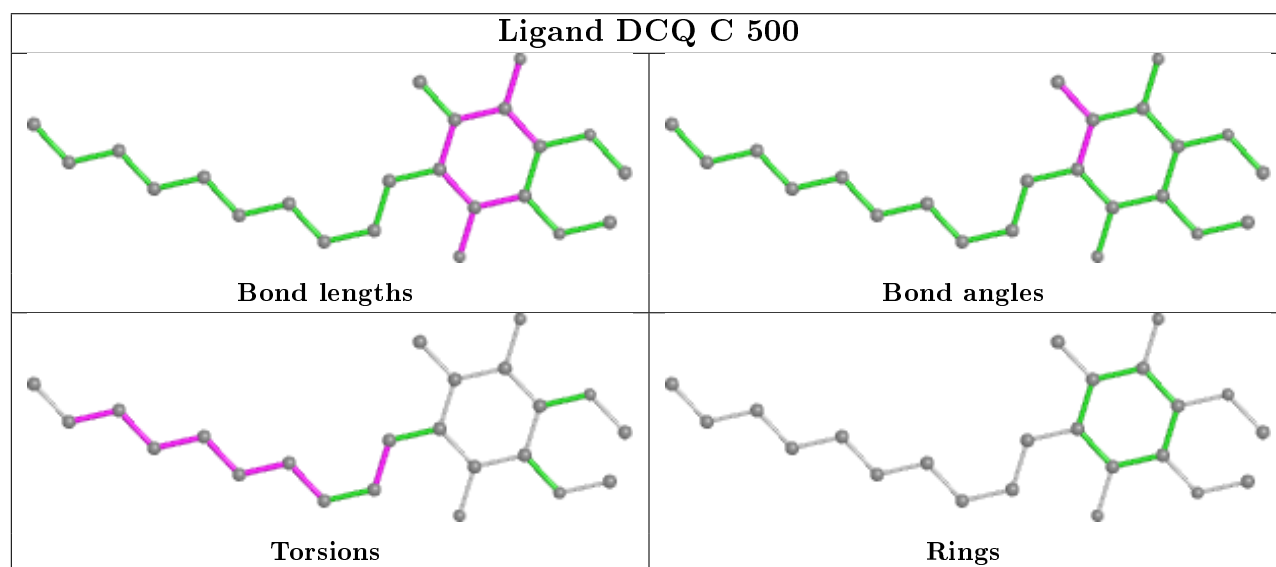
Mol	Chain	Res	Type	Clashes	Symm-Clashes
3	C	500	DCQ	32	0
3	D	500	DCQ	34	0
3	F	500	DCQ	19	0
2	F	441	FAD	7	0
4	A	600	LMT	2	0
7	F	434	SO4	3	0
6	F	800	PS9	2	0
6	A	800	PS9	2	0
4	B	600	LMT	6	0
4	F	600	LMT	6	0
7	C	431	SO4	1	0
2	D	441	FAD	6	0
7	E	434	SO4	1	0

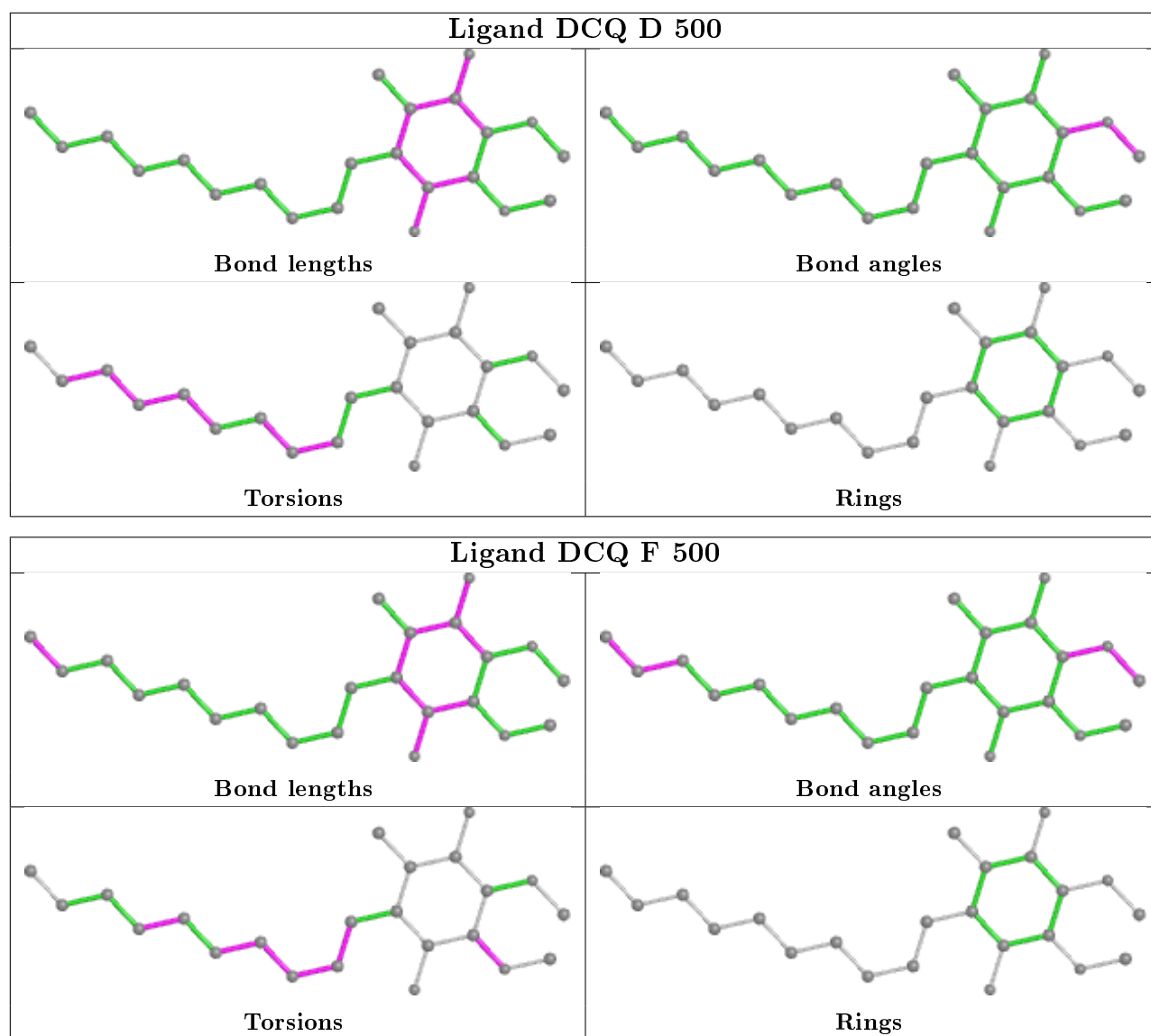
Continued on next page...

Continued from previous page...

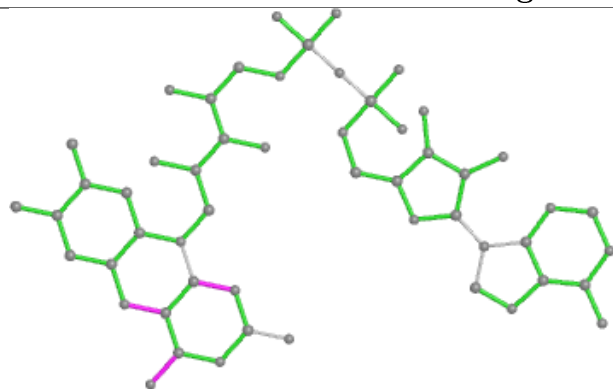
Mol	Chain	Res	Type	Clashes	Symm-Clashes
7	C	434	SO4	3	0
2	A	441	FAD	2	0
3	E	500	DCQ	18	0
7	C	432	SO4	1	0
7	F	431	SO4	1	0
6	E	800	PS9	2	0
4	D	600	LMT	1	0
3	B	500	DCQ	23	0
4	C	600	LMT	5	0
4	E	600	LMT	4	0
6	C	800	PS9	2	0
6	D	800	PS9	3	0
3	A	500	DCQ	16	0

The following is a two-dimensional graphical depiction of Mogul quality analysis of bond lengths, bond angles, torsion angles, and ring geometry for all instances of the Ligand of Interest. In addition, ligands with molecular weight > 250 and outliers as shown on the validation Tables will also be included. For torsion angles, if less than 5% of the Mogul distribution of torsion angles is within 10 degrees of the torsion angle in question, then that torsion angle is considered an outlier. Any bond that is central to one or more torsion angles identified as an outlier by Mogul will be highlighted in the graph. For rings, the root-mean-square deviation (RMSD) between the ring in question and similar rings identified by Mogul is calculated over all ring torsion angles. If the average RMSD is greater than 60 degrees and the minimal RMSD between the ring in question and any Mogul-identified rings is also greater than 60 degrees, then that ring is considered an outlier. The outliers are highlighted in purple. The color gray indicates Mogul did not find sufficient equivalents in the CSD to analyse the geometry.

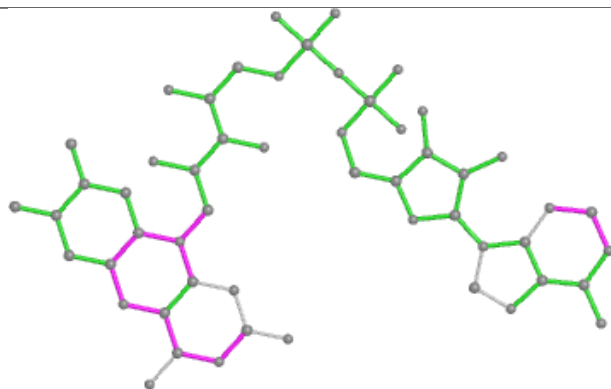




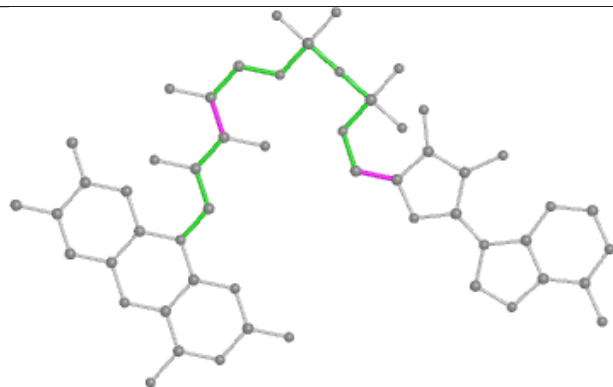
Ligand FAD F 441



Bond lengths



Bond angles

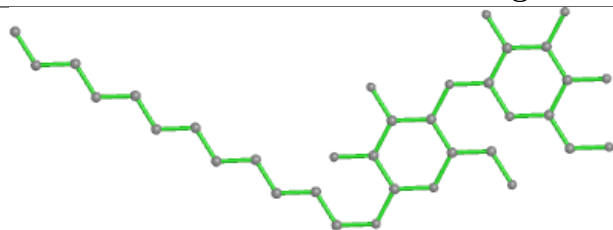


Torsions

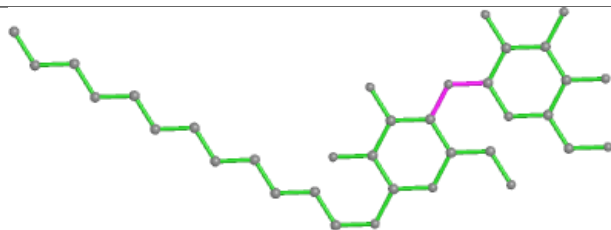


Rings

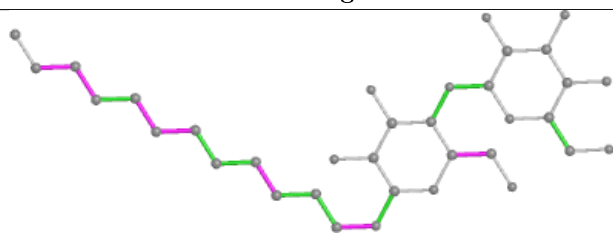
Ligand LMT A 600



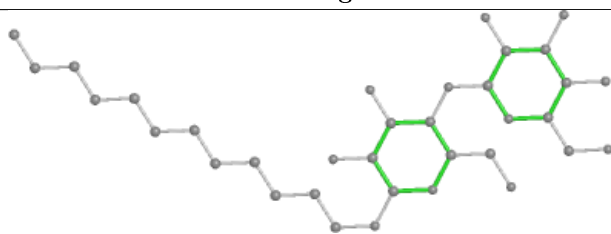
Bond lengths



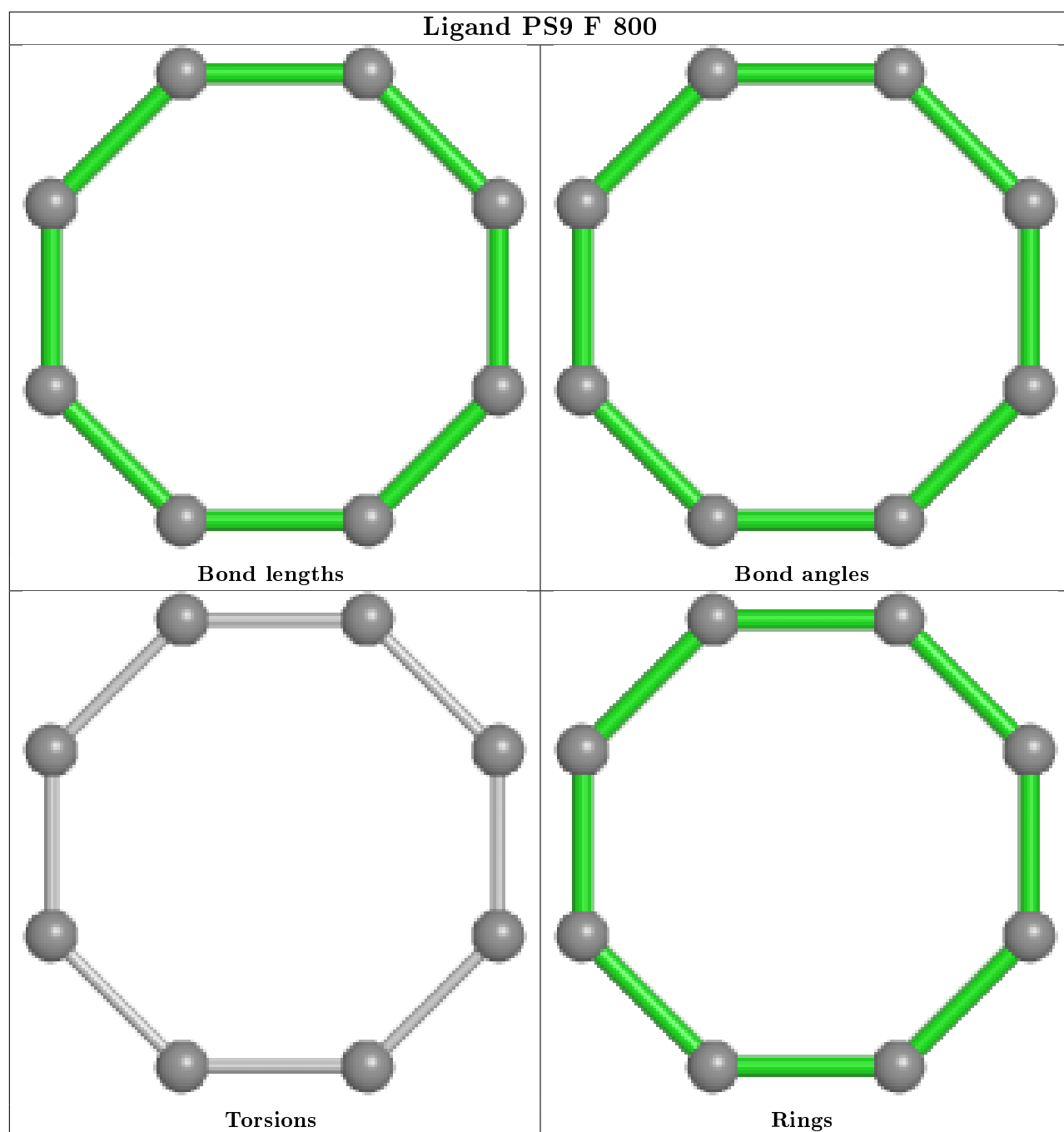
Bond angles

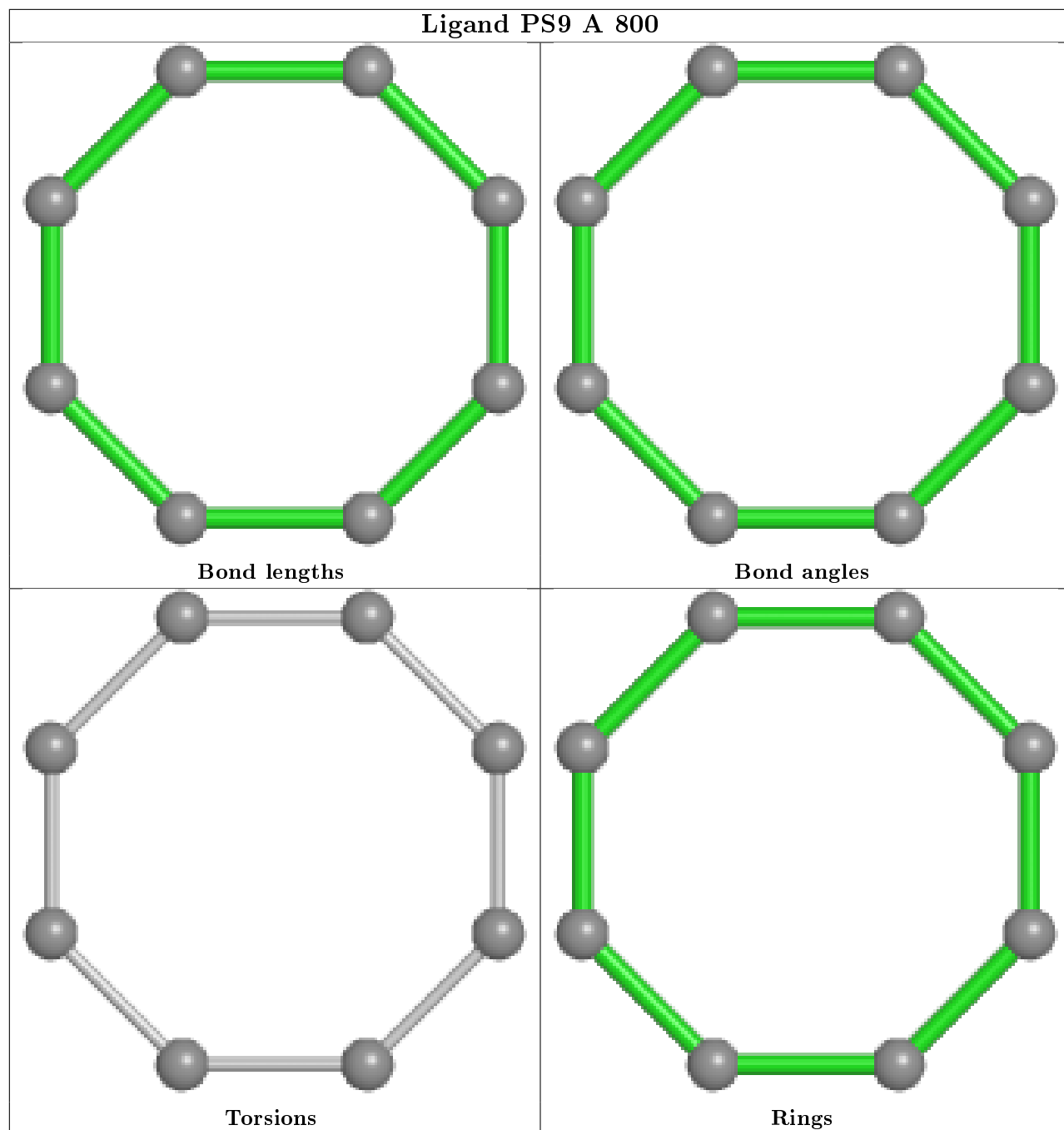


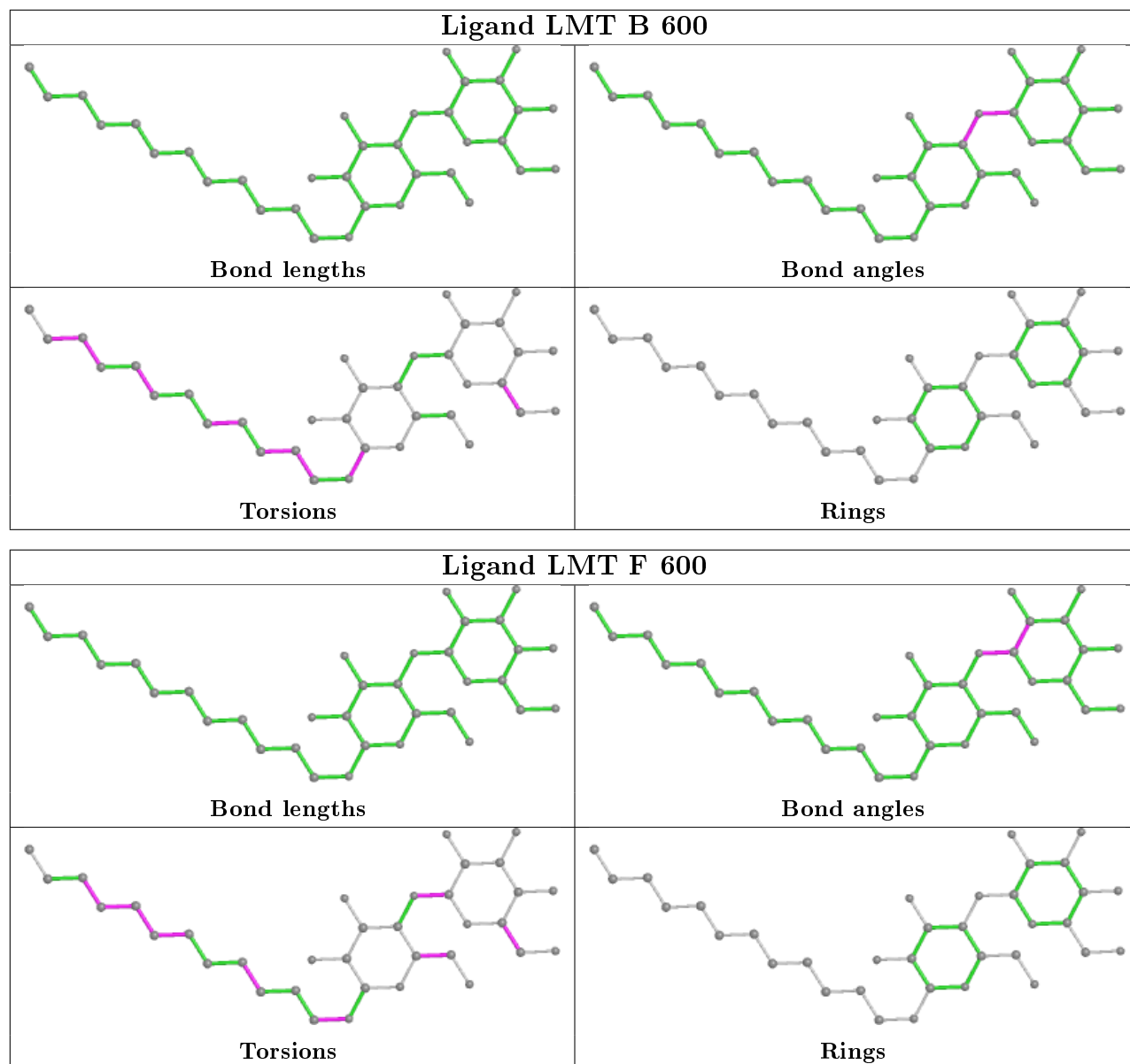
Torsions



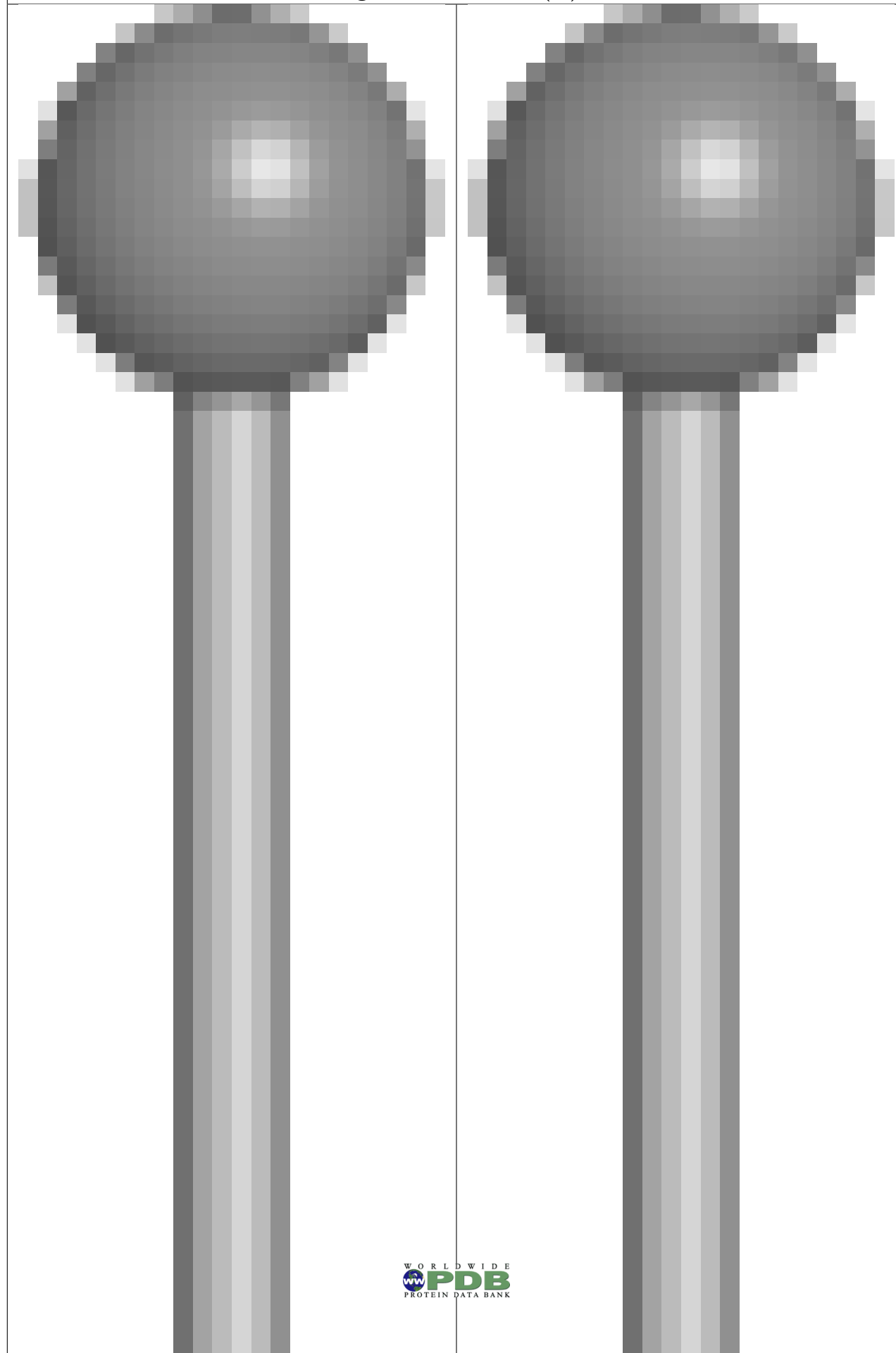
Rings

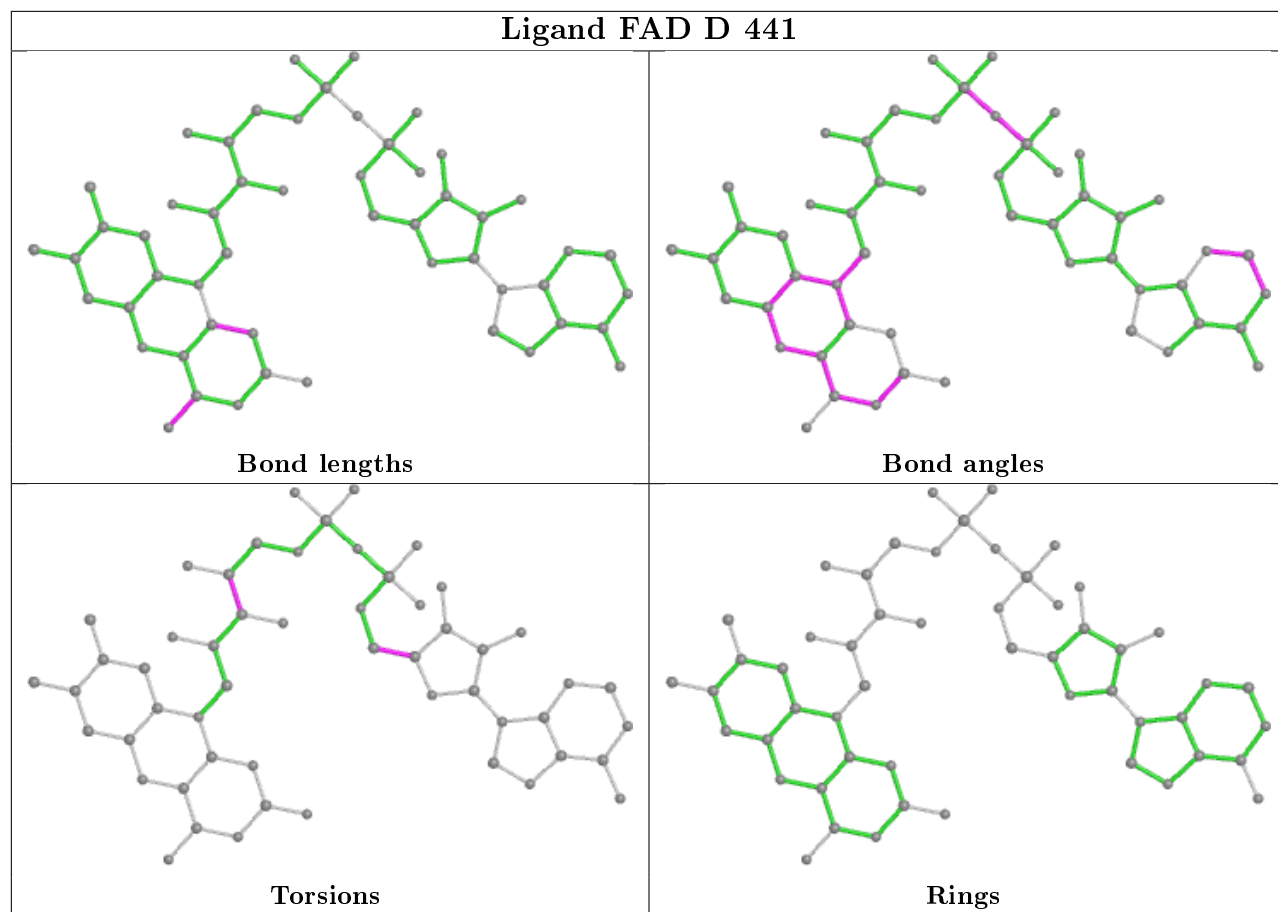




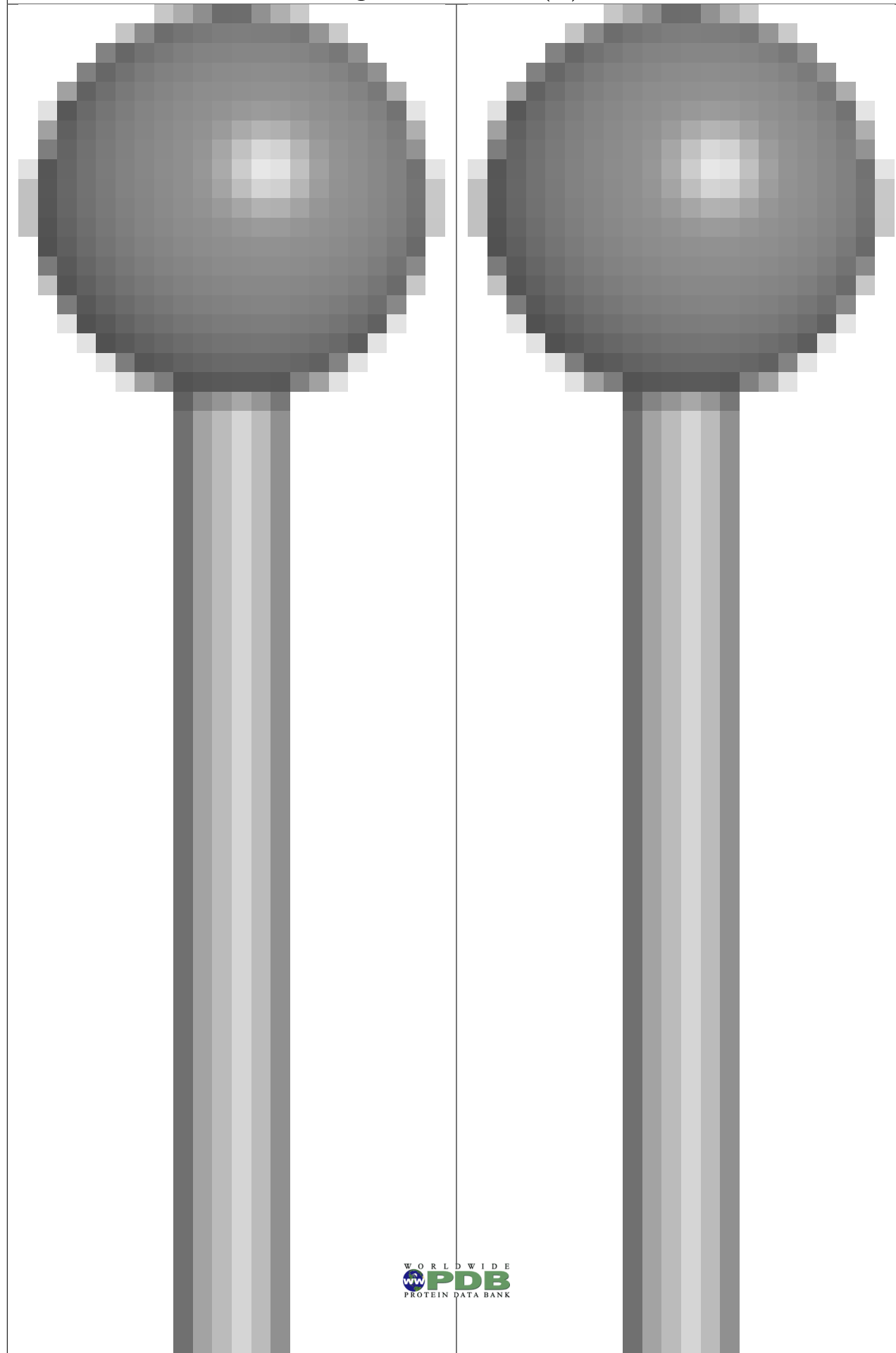


Ligand PS9 B 802 (B)

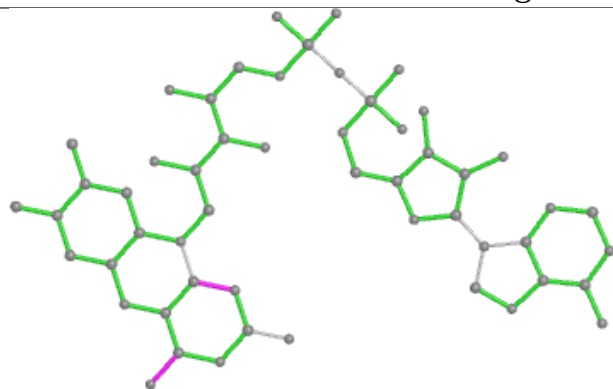




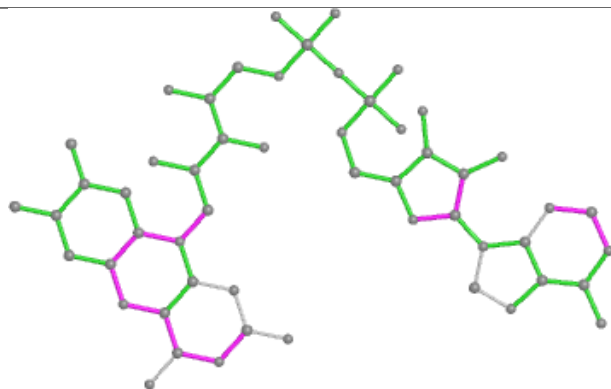
Ligand PS9 B 802 (A)



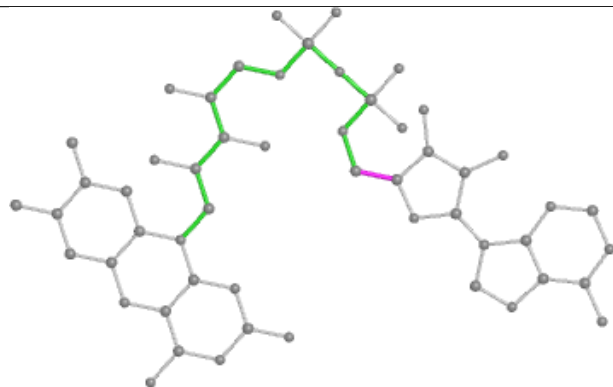
Ligand FAD A 441



Bond lengths



Bond angles

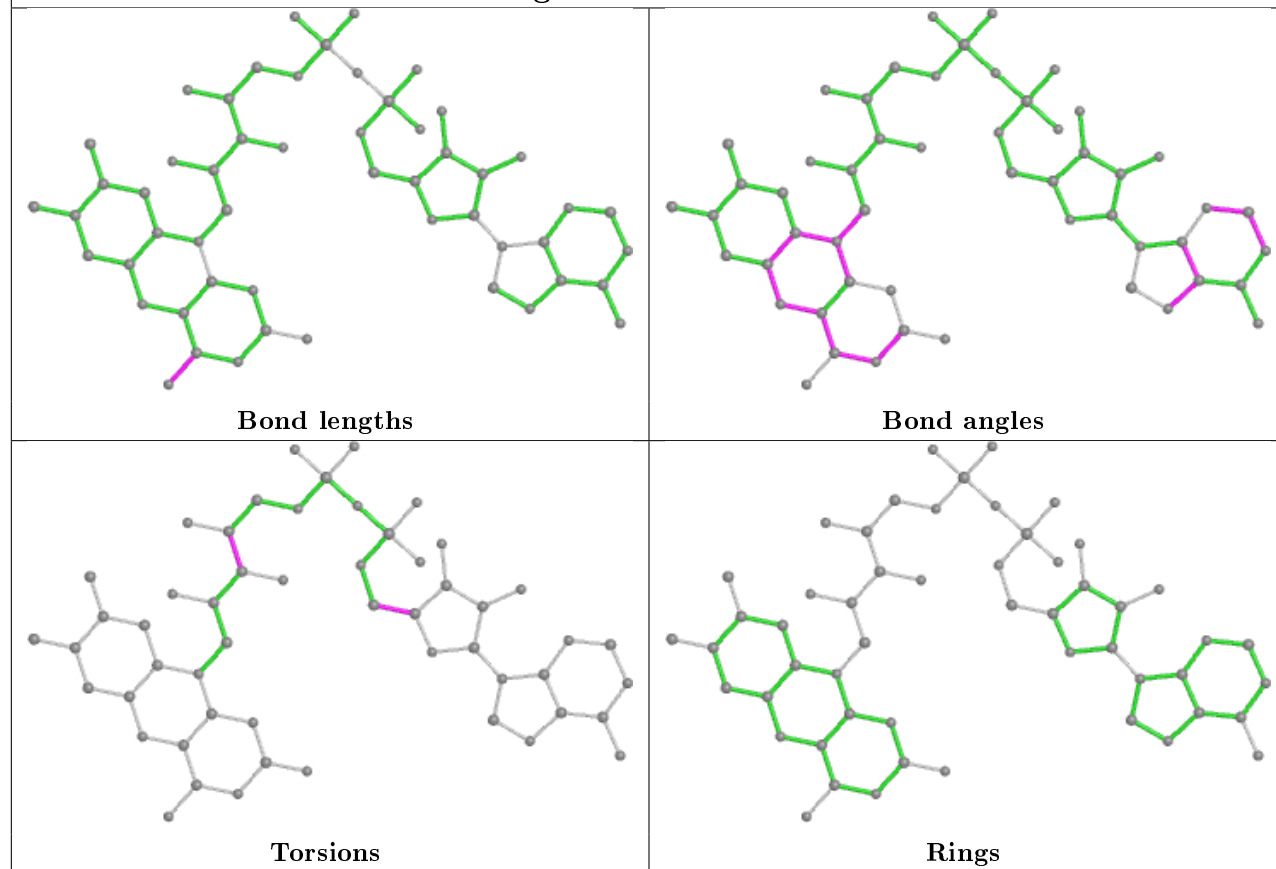


Torsions

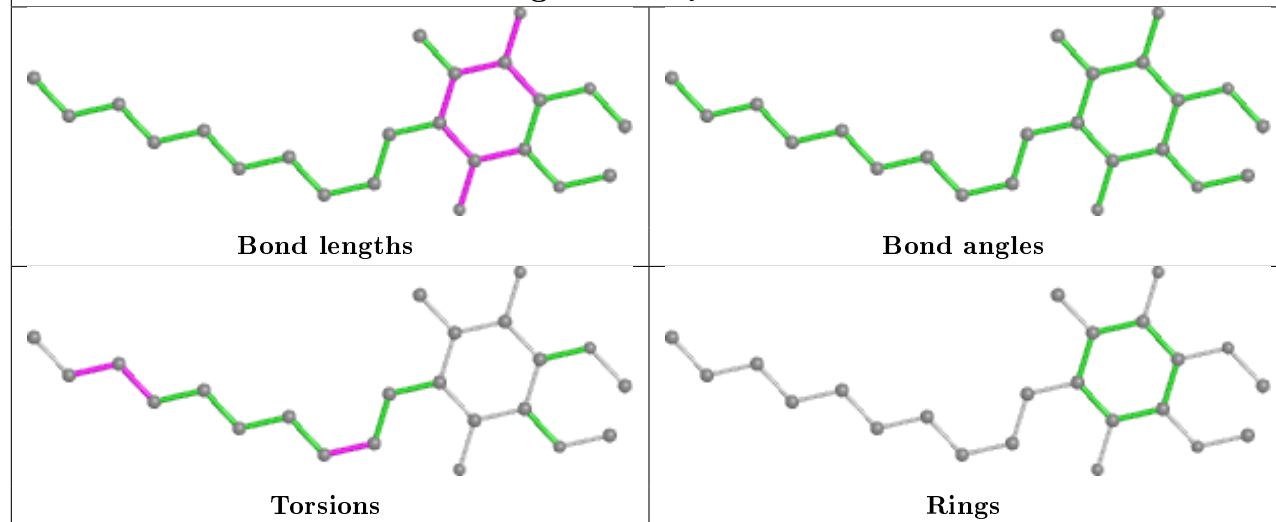


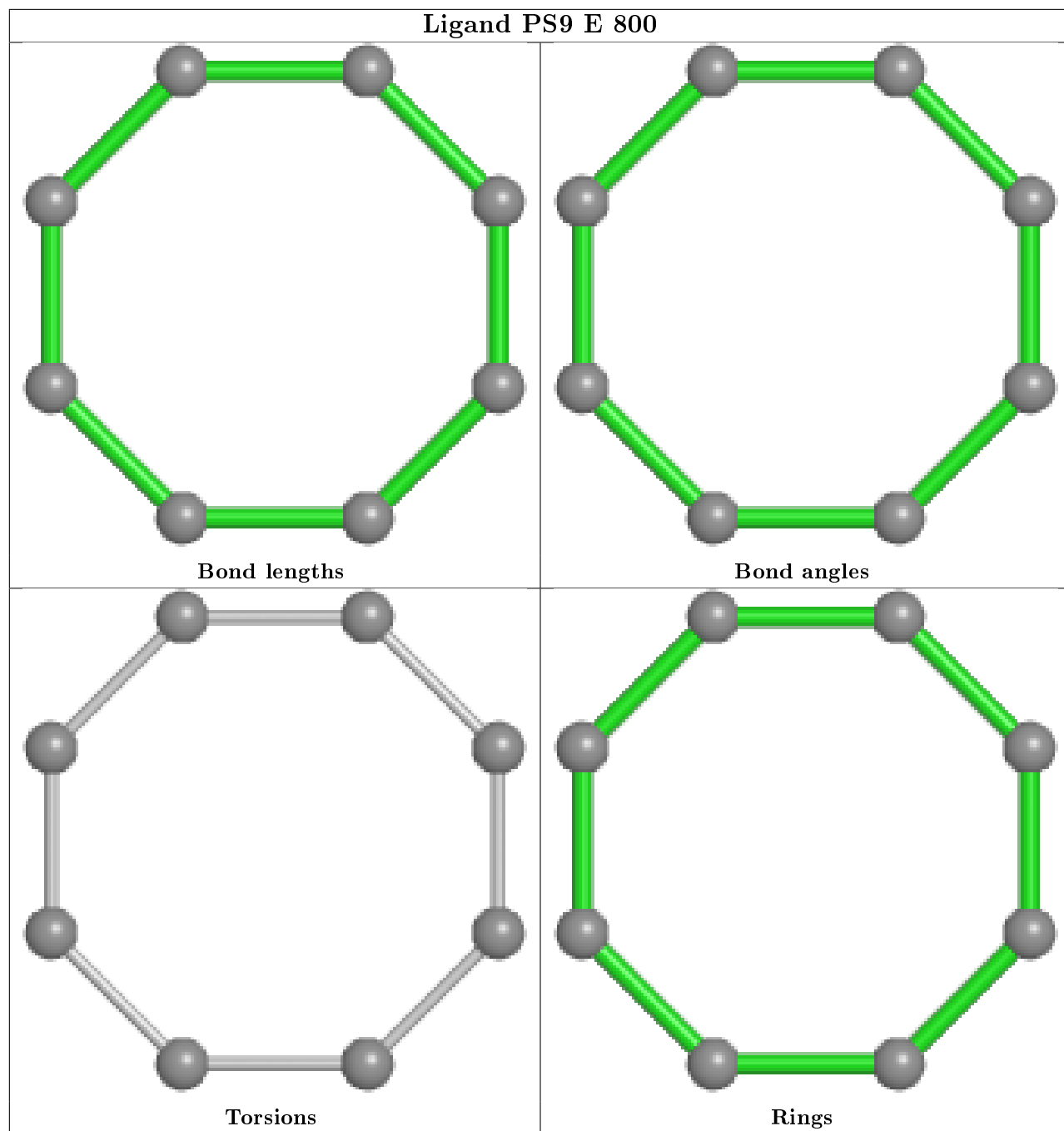
Rings

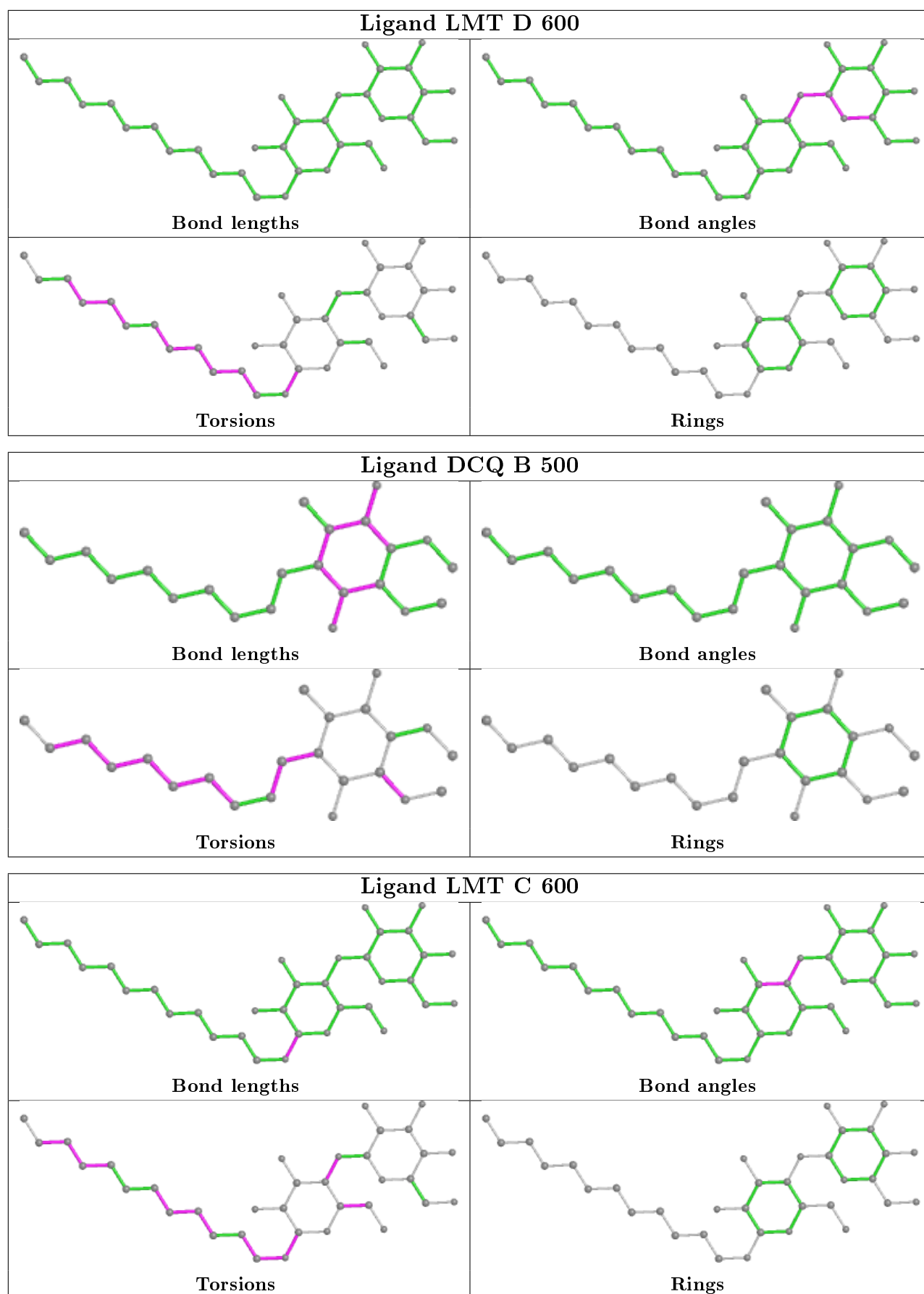
Ligand FAD C 441



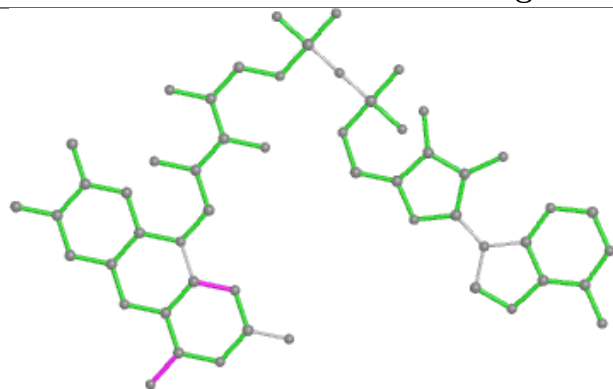
Ligand DCQ E 500



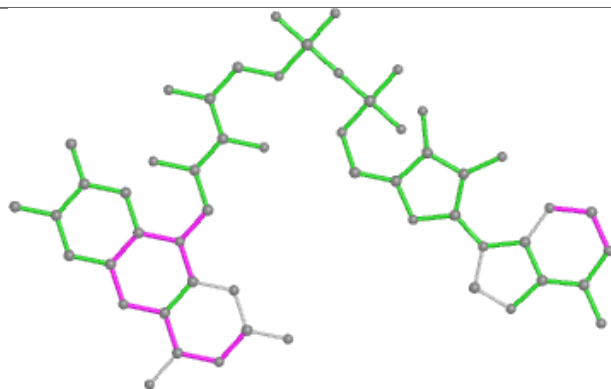




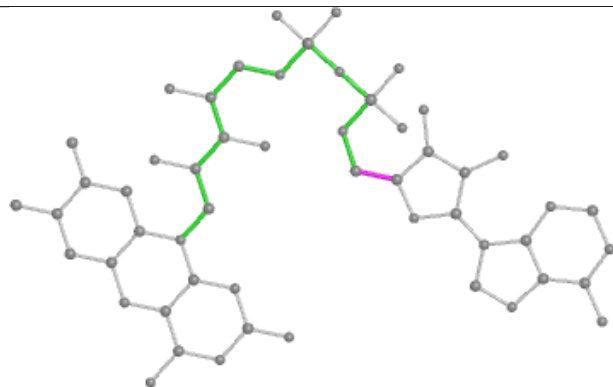
Ligand FAD B 441



Bond lengths



Bond angles

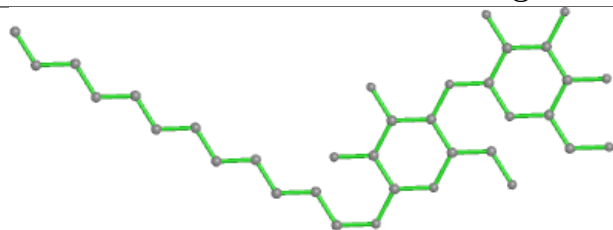


Torsions

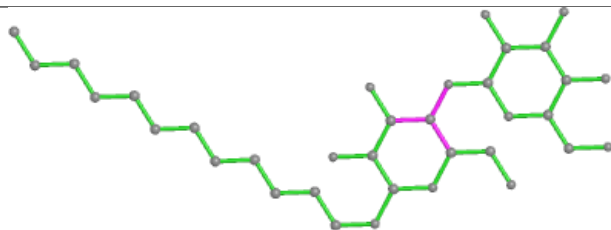


Rings

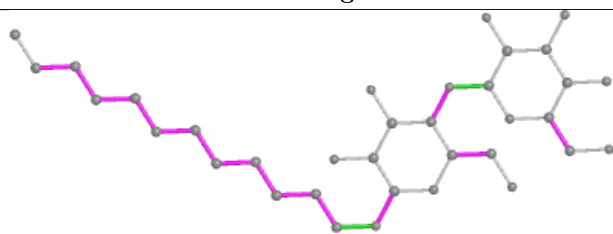
Ligand LMT E 600



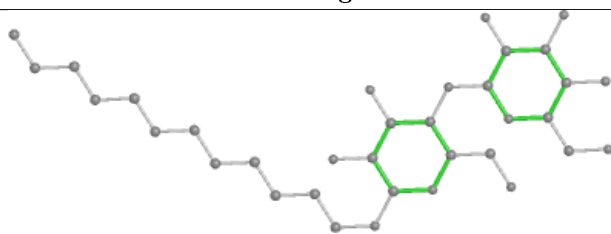
Bond lengths



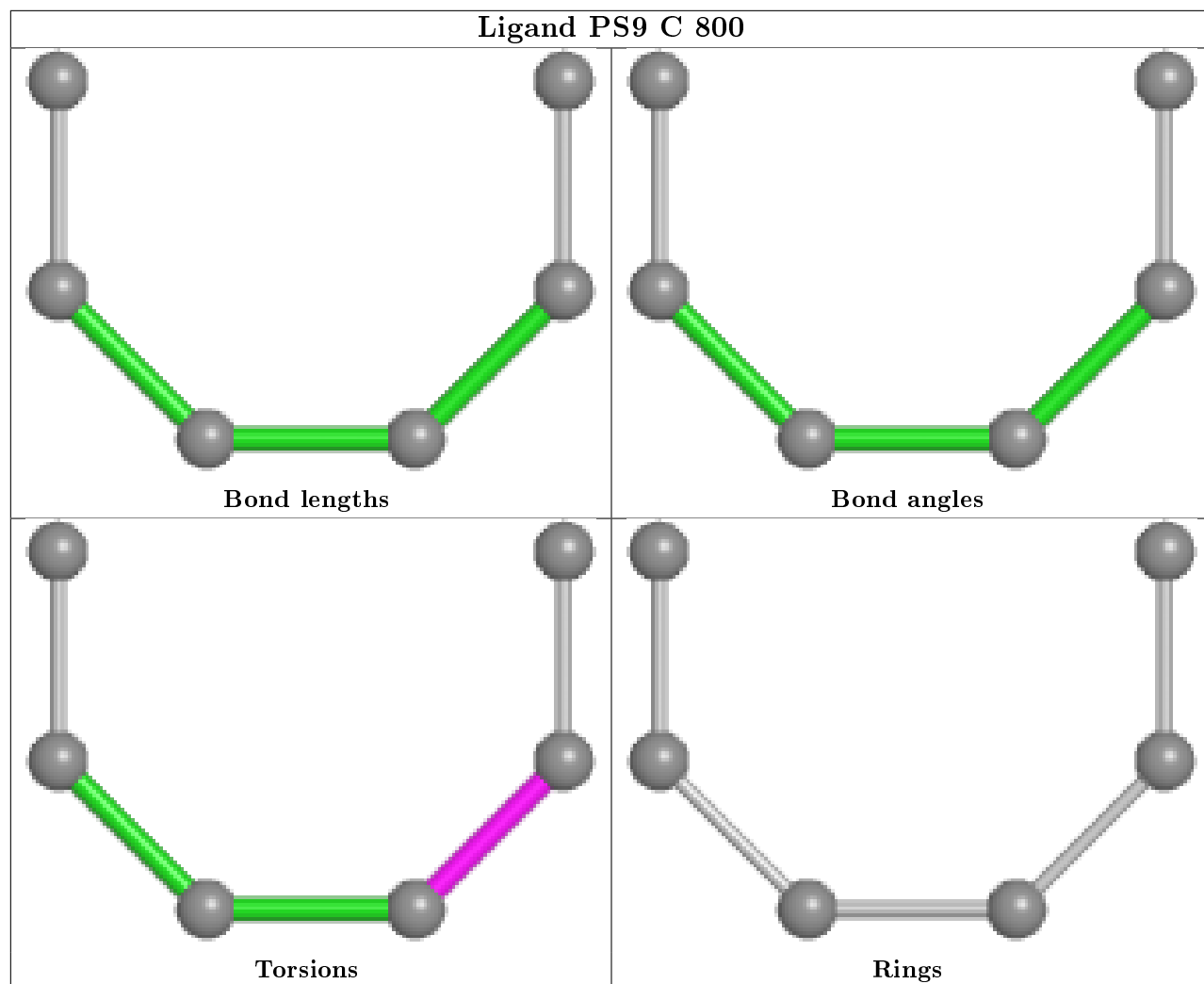
Bond angles



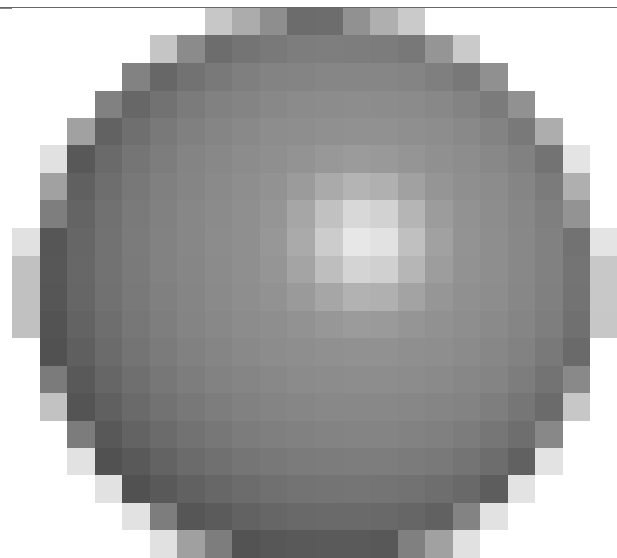
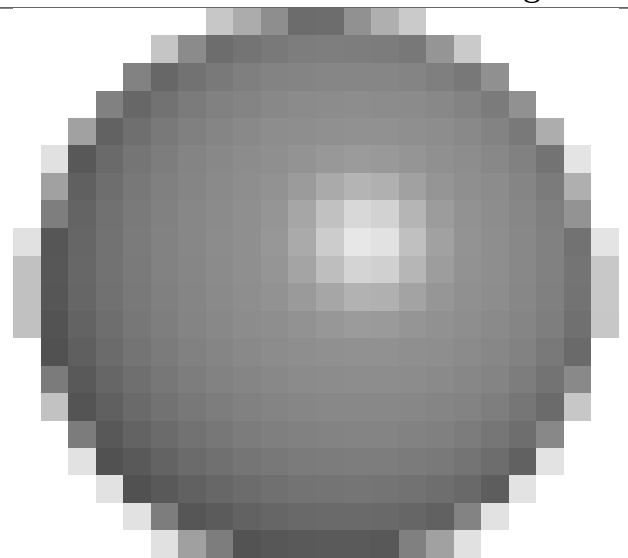
Torsions

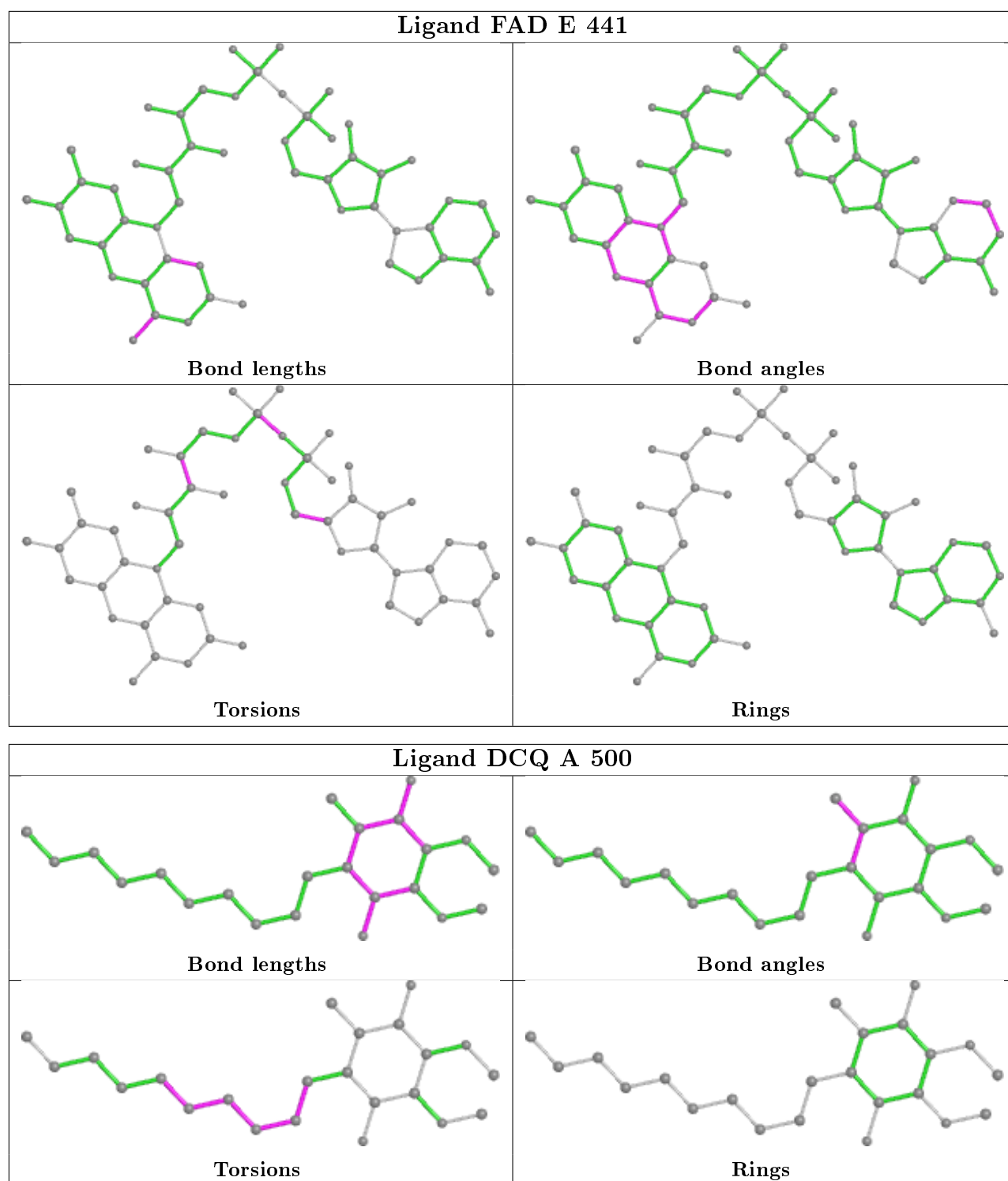


Rings



Ligand PS9 D 800





5.7 Other polymers [i](#)

There are no such residues in this entry.

5.8 Polymer linkage issues ⓘ

There are no chain breaks in this entry.

6 Fit of model and data [i](#)

6.1 Protein, DNA and RNA chains [i](#)

In the following table, the column labelled ‘#RSRZ> 2’ contains the number (and percentage) of RSRZ outliers, followed by percent RSRZ outliers for the chain as percentile scores relative to all X-ray entries and entries of similar resolution. The OWAB column contains the minimum, median, 95th percentile and maximum values of the occupancy-weighted average B-factor per residue. The column labelled ‘Q< 0.9’ lists the number of (and percentage) of residues with an average occupancy less than 0.9.

Mol	Chain	Analysed	<RSRZ>	#RSRZ>2	OWAB(Å ²)	Q<0.9
1	A	427/430 (99%)	0.50	21 (4%) 29 28	29, 35, 41, 46	0
1	B	427/430 (99%)	0.47	16 (3%) 41 41	29, 35, 41, 47	0
1	C	427/430 (99%)	0.46	26 (6%) 21 20	29, 35, 42, 49	0
1	D	427/430 (99%)	0.53	33 (7%) 13 12	29, 35, 41, 44	0
1	E	427/430 (99%)	0.47	26 (6%) 21 20	29, 35, 42, 45	0
1	F	427/430 (99%)	0.44	15 (3%) 44 43	29, 35, 41, 48	0
All	All	2562/2580 (99%)	0.48	137 (5%) 26 25	29, 35, 42, 49	0

The worst 5 of 137 RSRZ outliers are listed below:

Mol	Chain	Res	Type	RSRZ
1	C	430	CYS	8.5
1	F	430	CYS	7.4
1	B	430	CYS	5.7
1	E	430	CYS	5.3
1	A	430	CYS	4.6

6.2 Non-standard residues in protein, DNA, RNA chains [i](#)

In the following table, the Atoms column lists the number of modelled atoms in the group and the number defined in the chemical component dictionary. The B-factors column lists the minimum, median, 95th percentile and maximum values of B factors of atoms in the group. The column labelled ‘Q< 0.9’ lists the number of atoms with occupancy less than 0.9.

Mol	Type	Chain	Res	Atoms	RSCC	RSR	B-factors(Å ²)	Q<0.9
1	CSS	C	347[B]	6/8	0.82	0.17	43,43,43,44	1
1	CSS	C	347[A]	6/8	0.82	0.17	43,43,44,47	1
1	CSS	E	347[A]	6/8	0.84	0.15	44,44,44,47	1
1	CSS	E	347[B]	6/8	0.84	0.15	44,44,44,45	1

Continued on next page...

Continued from previous page...

Mol	Type	Chain	Res	Atoms	RSCC	RSR	B-factors(\AA^2)	Q<0.9
1	CSS	A	347[A]	6/8	0.84	0.15	45,45,46,49	1
1	CSS	A	347[B]	6/8	0.84	0.15	45,45,46,47	1
1	CSS	D	347[B]	7/8	0.88	0.15	44,44,44,45	2
1	CSS	D	347[A]	6/8	0.88	0.15	44,44,44,47	1
1	CSS	F	347[B]	6/8	0.89	0.13	44,44,45,45	1
1	CSS	F	347[A]	6/8	0.89	0.13	44,44,45,48	1
1	CSS	B	347[B]	7/8	0.92	0.13	43,44,44,45	2
1	CSS	B	347[A]	6/8	0.92	0.13	43,44,44,47	1
1	CSS	E	156[B]	7/8	0.94	0.13	35,36,38,38	2
1	CSS	E	156[A]	6/8	0.94	0.13	35,36,37,39	1
1	CSS	A	156[A]	6/8	0.95	0.18	36,36,37,40	1
1	CSS	A	156[B]	7/8	0.95	0.18	36,36,38,38	2
1	CSS	F	156[B]	7/8	0.95	0.14	35,36,37,37	2
1	CSS	F	156[A]	6/8	0.95	0.14	35,36,37,39	1
1	CSS	C	156[B]	7/8	0.95	0.13	35,35,36,37	2
1	CSS	C	156[A]	6/8	0.95	0.13	35,36,36,40	1
1	CSS	B	156[B]	7/8	0.96	0.15	33,35,36,36	2
1	CSS	B	156[A]	6/8	0.96	0.15	35,35,36,39	1
1	CSS	D	156[A]	6/8	0.97	0.08	35,35,36,37	1
1	CSS	D	156[B]	7/8	0.97	0.08	35,35,36,36	2

6.3 Carbohydrates ⓘ

There are no carbohydrates in this entry.

6.4 Ligands ⓘ

In the following table, the Atoms column lists the number of modelled atoms in the group and the number defined in the chemical component dictionary. The B-factors column lists the minimum, median, 95th percentile and maximum values of B factors of atoms in the group. The column labelled 'Q< 0.9' lists the number of atoms with occupancy less than 0.9.

Mol	Type	Chain	Res	Atoms	RSCC	RSR	B-factors(\AA^2)	Q<0.9
4	LMT	C	600	35/35	0.27	0.56	53,57,59,60	35
4	LMT	A	600	35/35	0.34	0.51	50,55,57,58	35
4	LMT	F	600	35/35	0.38	0.43	44,50,54,55	35
4	LMT	E	600	35/35	0.43	0.46	53,55,58,58	35
4	LMT	B	600	35/35	0.44	0.45	49,50,52,53	35
6	PS9	D	800	2/8	0.46	0.47	33,33,33,34	2
6	PS9	E	800	8/8	0.47	0.55	42,43,43,43	8
4	LMT	D	600	35/35	0.47	0.41	47,51,53,54	35

Continued on next page...

Continued from previous page...

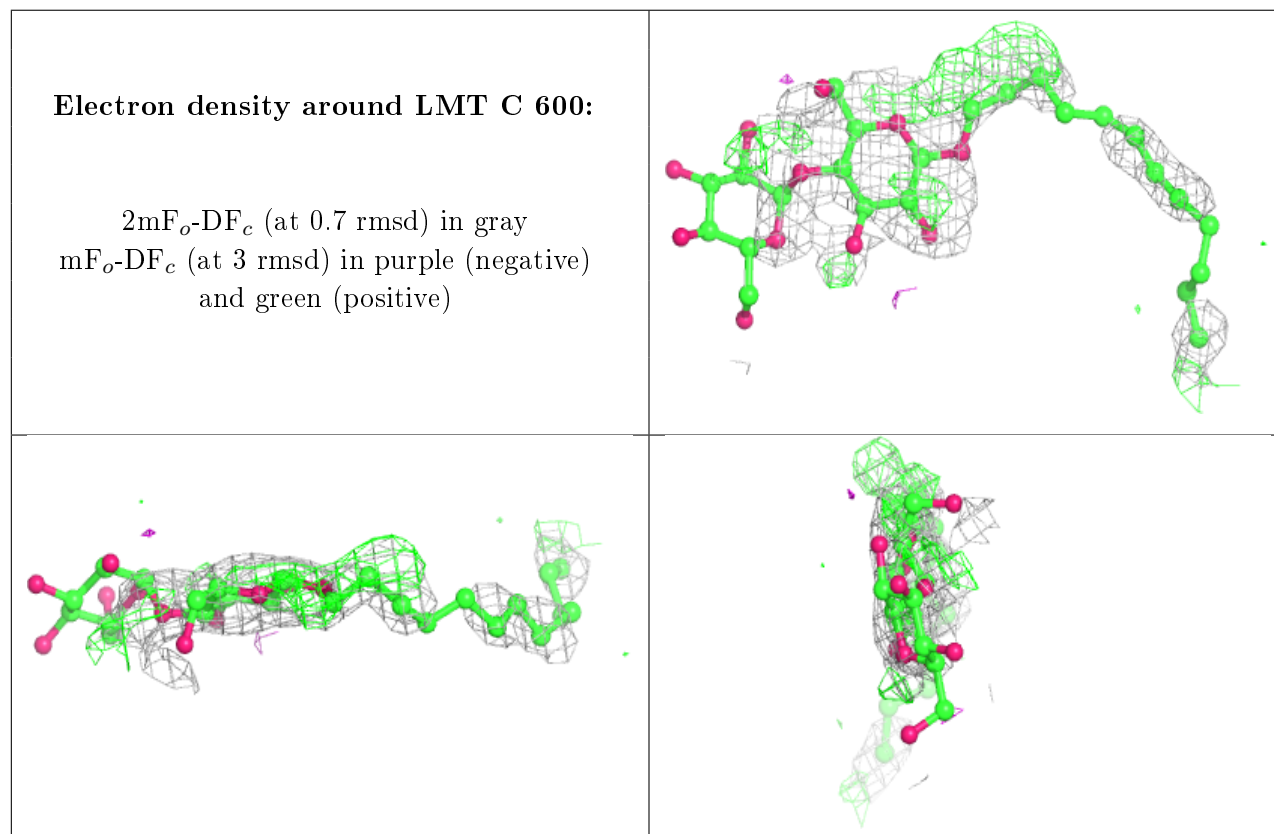
Mol	Type	Chain	Res	Atoms	RSCC	RSR	B-factors(\AA^2)	Q<0.9
6	PS9	C	800	6/8	0.49	0.56	39,40,42,42	6
6	PS9	A	800	8/8	0.50	0.58	40,41,41,42	8
6	PS9	B	802[A]	2/8	0.53	1.11	41,41,41,41	2
6	PS9	B	802[B]	2/8	0.53	1.11	39,39,39,41	2
7	SO4	D	434	5/5	0.59	0.39	54,54,54,55	5
7	SO4	F	434	5/5	0.61	0.39	54,54,55,55	5
6	PS9	D	802	1/8	0.62	0.64	44,44,44,44	1
3	DCQ	D	500	23/23	0.63	0.72	49,50,51,51	23
3	DCQ	F	500	23/23	0.64	0.78	52,53,53,54	23
3	DCQ	A	500	23/23	0.64	0.69	46,51,51,51	23
6	PS9	F	800	8/8	0.65	0.50	39,40,41,41	8
3	DCQ	E	500	23/23	0.66	0.72	47,48,48,48	23
7	SO4	C	434	5/5	0.67	0.28	60,60,61,61	5
3	DCQ	B	500	23/23	0.69	0.55	43,48,48,48	23
3	DCQ	C	500	23/23	0.70	0.63	43,46,47,47	23
7	SO4	A	435	5/5	0.71	0.31	38,39,39,39	5
7	SO4	C	431	5/5	0.74	0.38	39,39,39,39	5
7	SO4	D	431	5/5	0.74	0.48	38,38,38,38	5
7	SO4	B	433	5/5	0.77	0.26	51,51,52,52	5
7	SO4	D	433	5/5	0.78	0.26	57,57,57,58	5
7	SO4	B	434	5/5	0.78	0.35	44,45,45,46	5
7	SO4	F	431	5/5	0.80	0.28	33,34,34,34	5
6	PS9	B	800	1/8	0.80	0.77	32,32,32,32	1
7	SO4	E	433	5/5	0.81	0.22	56,56,56,56	5
7	SO4	A	434	5/5	0.82	0.25	47,47,48,48	5
7	SO4	C	433	5/5	0.84	0.26	36,37,37,38	5
7	SO4	E	434	5/5	0.86	0.23	42,43,43,43	5
7	SO4	A	433	5/5	0.87	0.26	29,31,32,32	5
7	SO4	B	431	5/5	0.88	0.27	37,37,38,38	5
7	SO4	F	433	5/5	0.88	0.21	39,41,41,41	5
5	H2S	E	700	1/1	0.89	0.11	32,32,32,32	1
7	SO4	A	431	5/5	0.91	0.20	39,39,39,39	5
7	SO4	C	432	5/5	0.91	0.20	35,35,36,36	5
7	SO4	F	432	5/5	0.93	0.19	41,42,42,42	5
7	SO4	D	432	5/5	0.93	0.15	34,34,34,35	5
7	SO4	E	432	5/5	0.94	0.18	36,36,36,37	5
5	H2S	B	700	1/1	0.95	0.09	28,28,28,28	1
2	FAD	E	441	53/53	0.95	0.10	26,29,37,37	0
5	H2S	D	700	1/1	0.95	0.07	33,33,33,33	1
2	FAD	C	441	53/53	0.95	0.10	21,27,30,31	0
5	H2S	C	700	1/1	0.96	0.09	31,31,31,31	1
2	FAD	F	441	53/53	0.96	0.09	24,28,34,34	0

Continued on next page...

Continued from previous page...

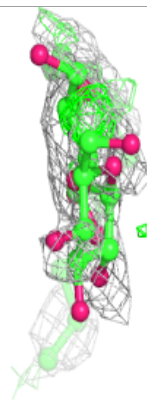
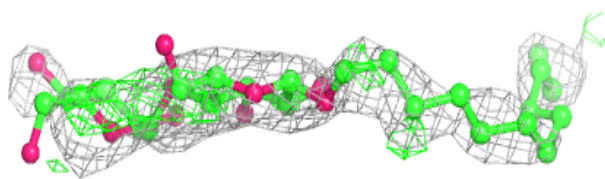
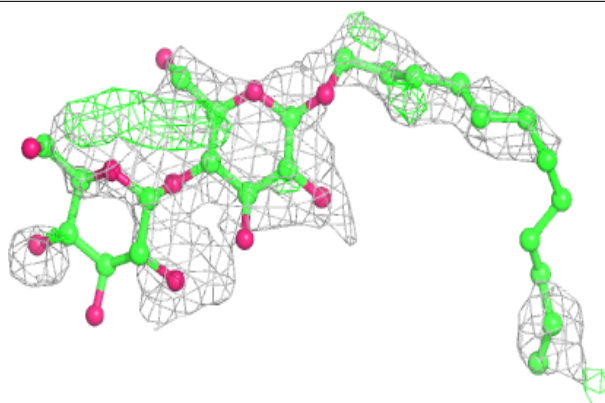
Mol	Type	Chain	Res	Atoms	RSCC	RSR	B-factors(\AA^2)	Q<0.9
2	FAD	B	441	53/53	0.96	0.09	22,26,28,29	0
2	FAD	A	441	53/53	0.96	0.09	20,23,26,26	0
2	FAD	D	441	53/53	0.96	0.10	23,32,33,33	0
7	SO4	B	432	5/5	0.97	0.14	25,26,26,27	5
7	SO4	A	432	5/5	0.97	0.14	30,31,31,31	5
5	H2S	F	700	1/1	0.98	0.07	31,31,31,31	1
5	H2S	A	700	1/1	0.99	0.10	28,28,28,28	1

The following is a graphical depiction of the model fit to experimental electron density of all instances of the Ligand of Interest. In addition, ligands with molecular weight > 250 and outliers as shown on the geometry validation Tables will also be included. Each fit is shown from different orientation to approximate a three-dimensional view.

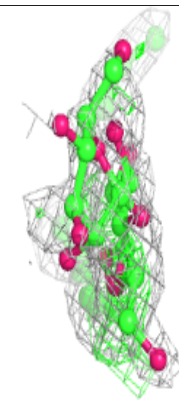
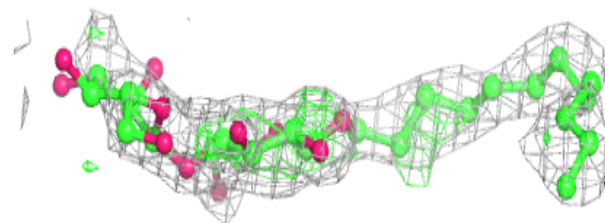
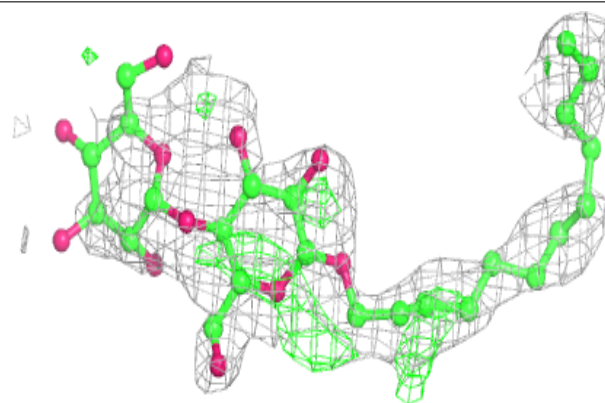


Electron density around LMT A 600:

$2mF_o-DF_c$ (at 0.7 rmsd) in gray
 mF_o-DF_c (at 3 rmsd) in purple (negative)
and green (positive)

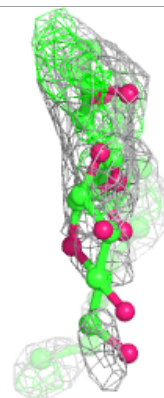
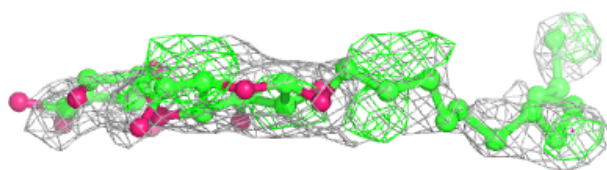
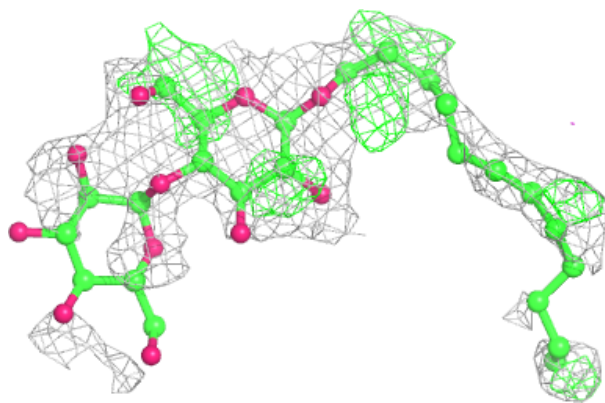
**Electron density around LMT F 600:**

$2mF_o-DF_c$ (at 0.7 rmsd) in gray
 mF_o-DF_c (at 3 rmsd) in purple (negative)
and green (positive)

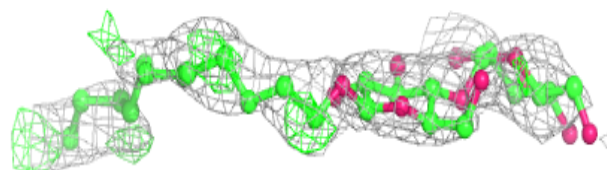
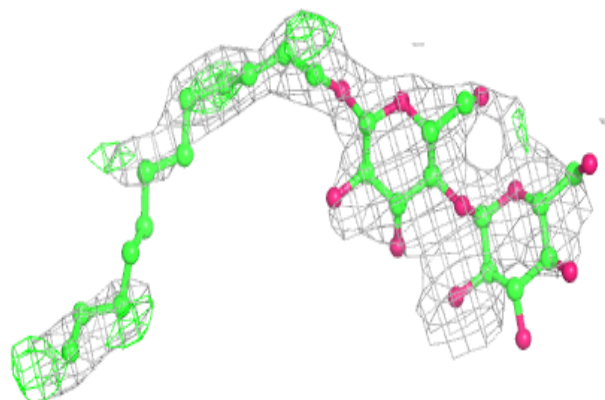


Electron density around LMT E 600:

$2mF_o-DF_c$ (at 0.7 rmsd) in gray
 mF_o-DF_c (at 3 rmsd) in purple (negative)
and green (positive)

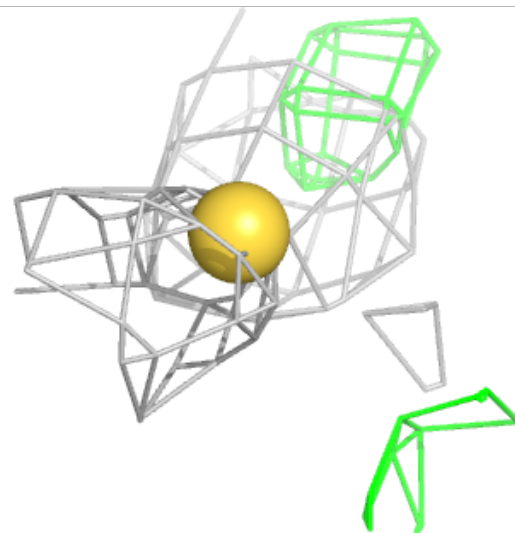
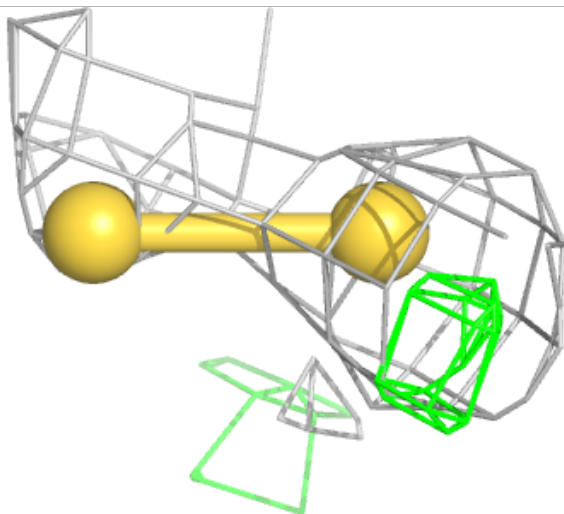
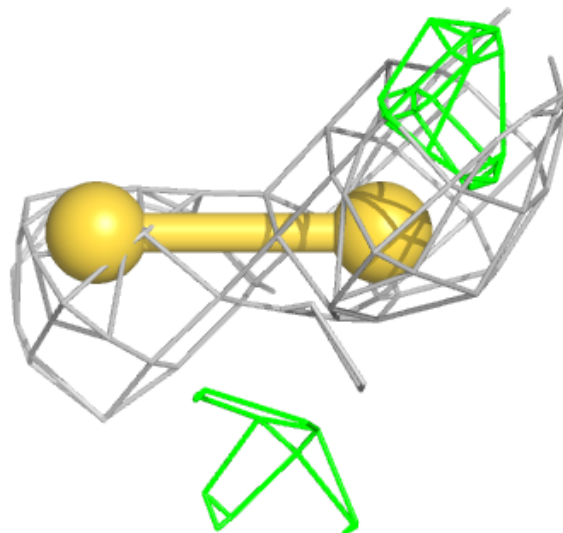
**Electron density around LMT B 600:**

$2mF_o-DF_c$ (at 0.7 rmsd) in gray
 mF_o-DF_c (at 3 rmsd) in purple (negative)
and green (positive)



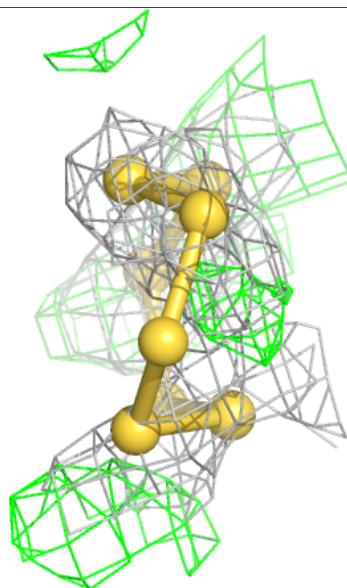
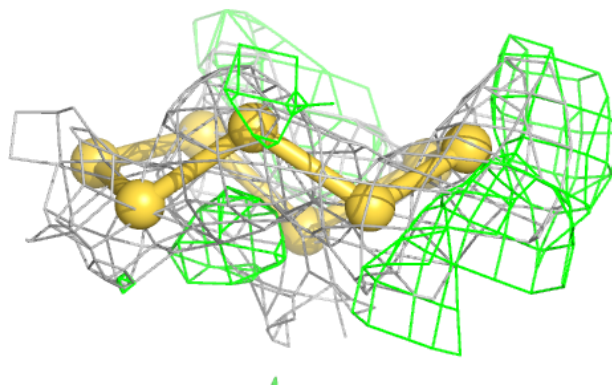
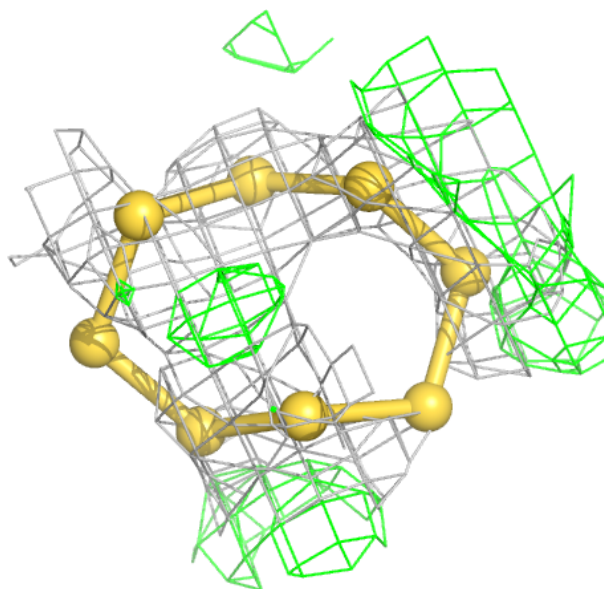
Electron density around PS9 D 800:

$2mF_o-DF_c$ (at 0.7 rmsd) in gray
 mF_o-DF_c (at 3 rmsd) in purple (negative)
and green (positive)



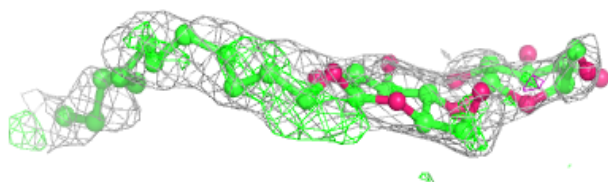
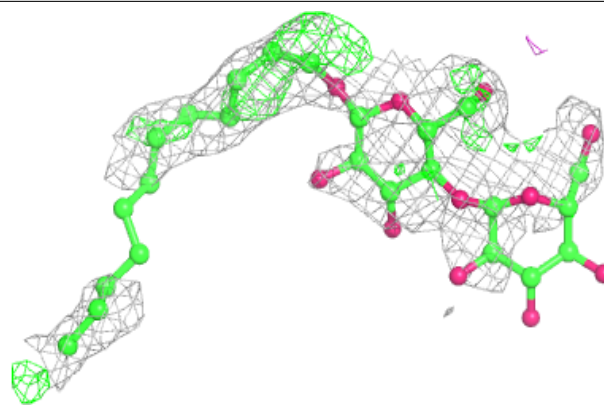
Electron density around PS9 E 800:

$2mF_o-DF_c$ (at 0.7 rmsd) in gray
 mF_o-DF_c (at 3 rmsd) in purple (negative)
and green (positive)



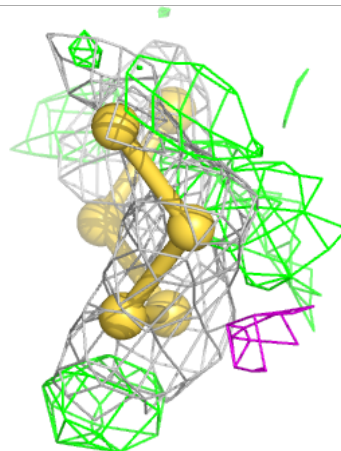
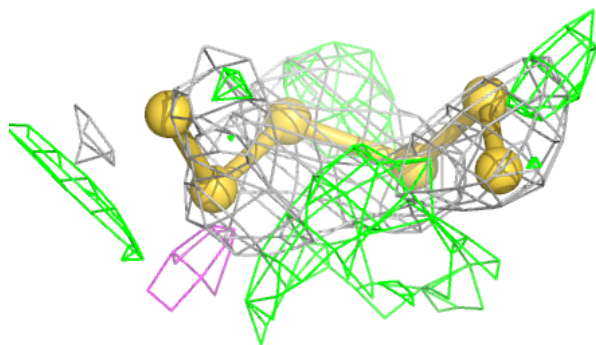
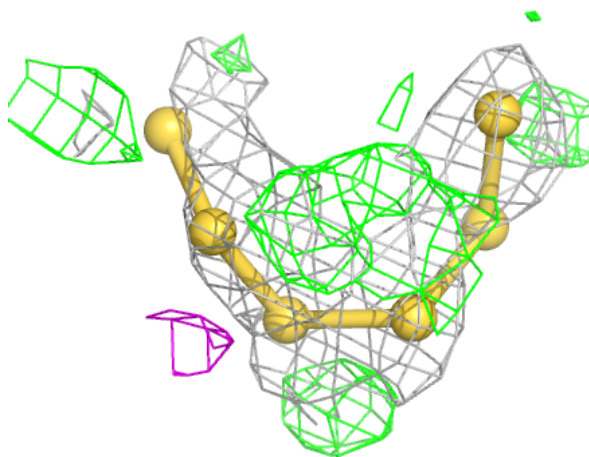
Electron density around LMT D 600:

$2mF_o - DF_c$ (at 0.7 rmsd) in gray
 $mF_o - DF_c$ (at 3 rmsd) in purple (negative)
and green (positive)



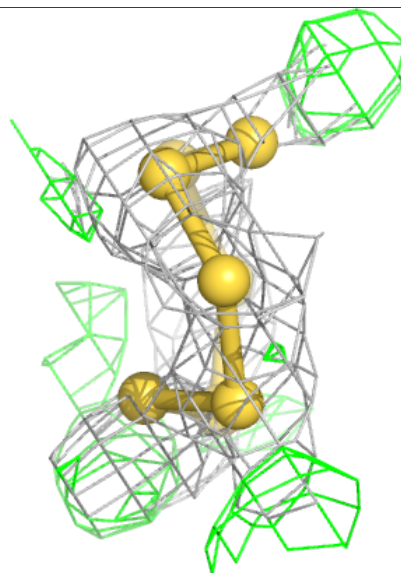
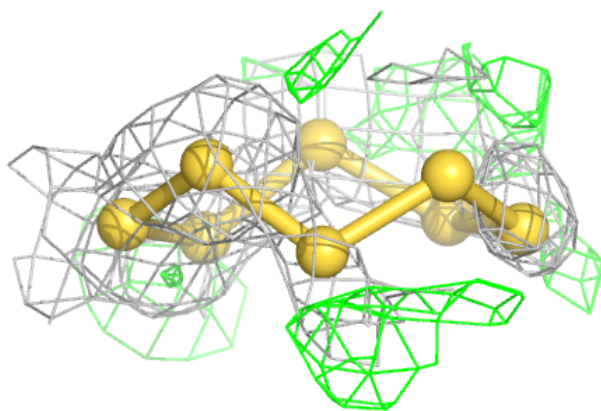
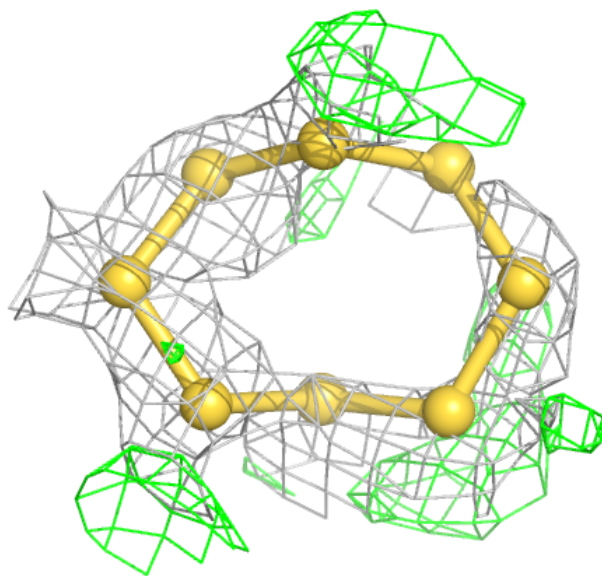
Electron density around PS9 C 800:

$2mF_o-DF_c$ (at 0.7 rmsd) in gray
 mF_o-DF_c (at 3 rmsd) in purple (negative)
and green (positive)



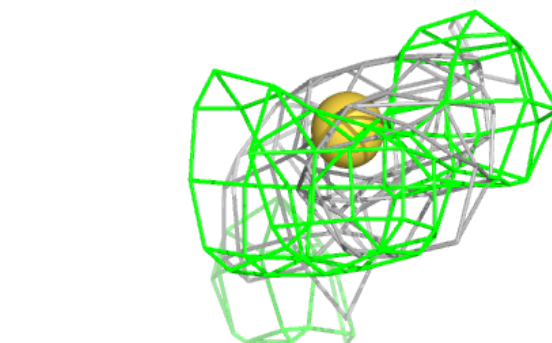
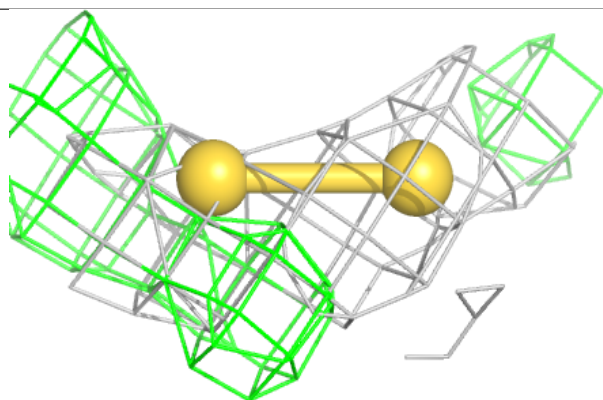
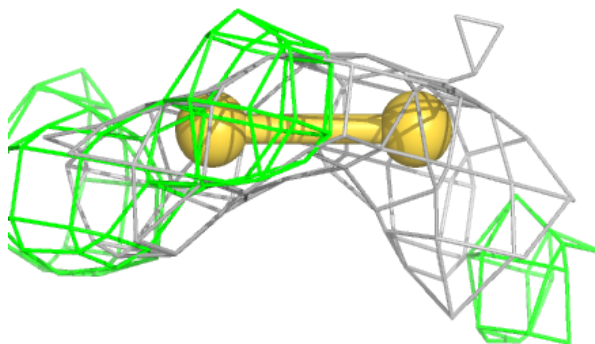
Electron density around PS9 A 800:

$2mF_o-DF_c$ (at 0.7 rmsd) in gray
 mF_o-DF_c (at 3 rmsd) in purple (negative)
and green (positive)

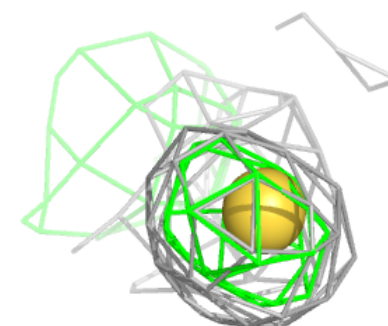
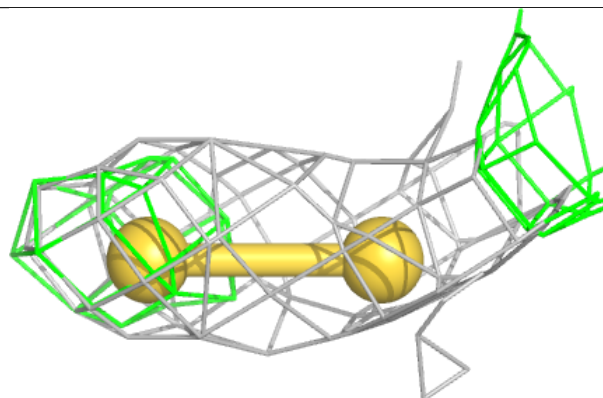
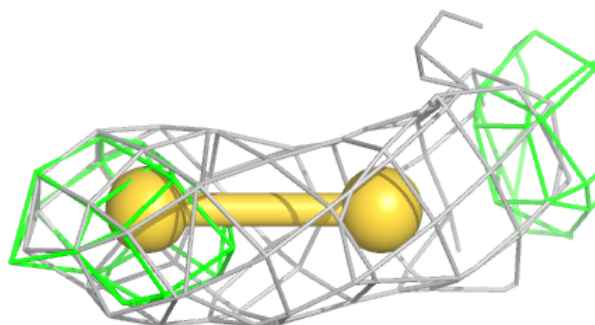


Electron density around PS9 B 802 (A):

$2mF_o-DF_c$ (at 0.7 rmsd) in gray
 mF_o-DF_c (at 3 rmsd) in purple (negative)
and green (positive)

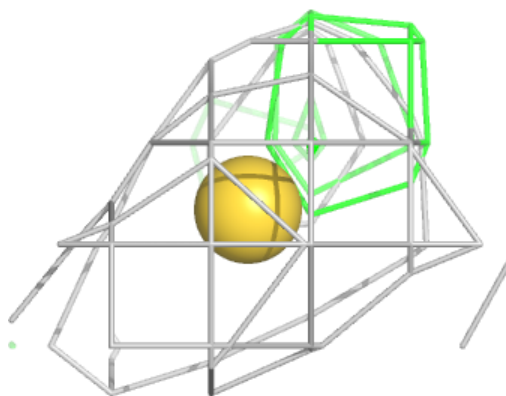
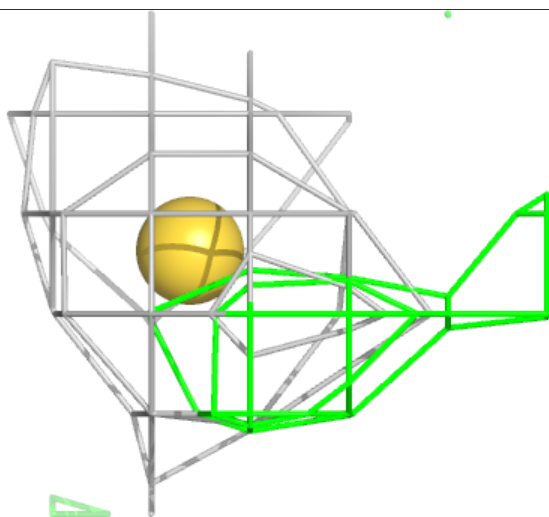
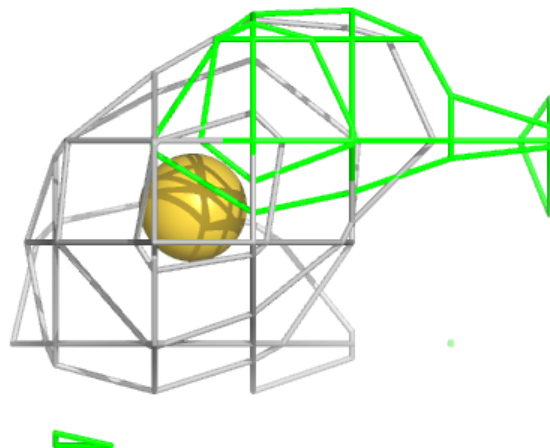
**Electron density around PS9 B 802 (B):**

$2mF_o-DF_c$ (at 0.7 rmsd) in gray
 mF_o-DF_c (at 3 rmsd) in purple (negative)
and green (positive)



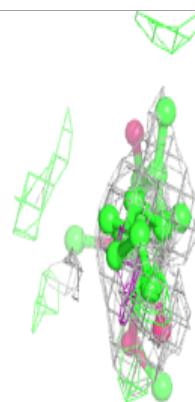
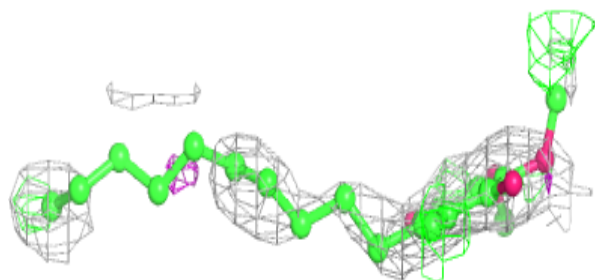
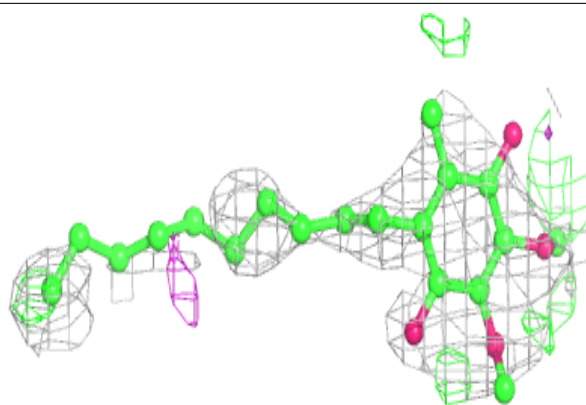
Electron density around PS9 D 802:

$2mF_o-DF_c$ (at 0.7 rmsd) in gray
 mF_o-DF_c (at 3 rmsd) in purple (negative)
and green (positive)

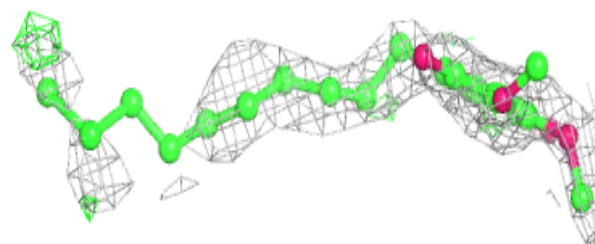
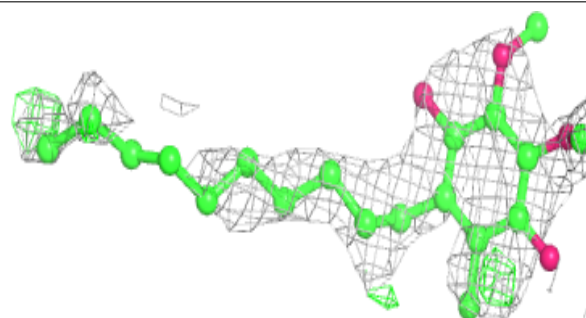


Electron density around DCQ D 500:

$2mF_o-DF_c$ (at 0.7 rmsd) in gray
 mF_o-DF_c (at 3 rmsd) in purple (negative)
and green (positive)

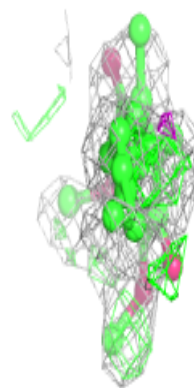
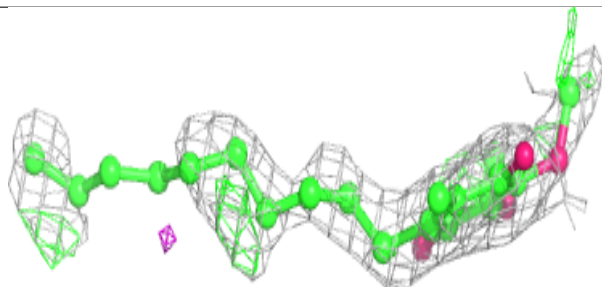
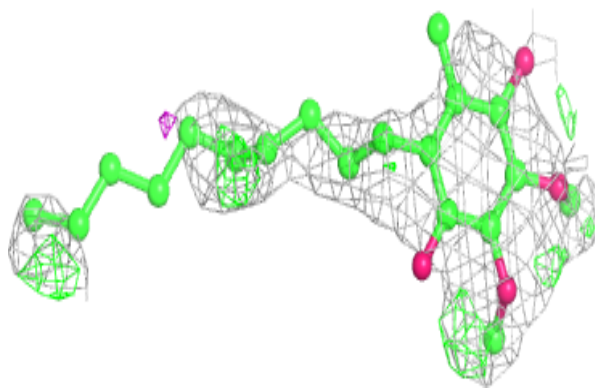
**Electron density around DCQ F 500:**

$2mF_o-DF_c$ (at 0.7 rmsd) in gray
 mF_o-DF_c (at 3 rmsd) in purple (negative)
and green (positive)



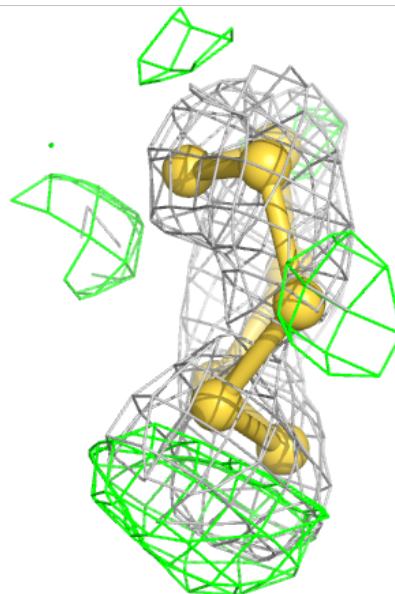
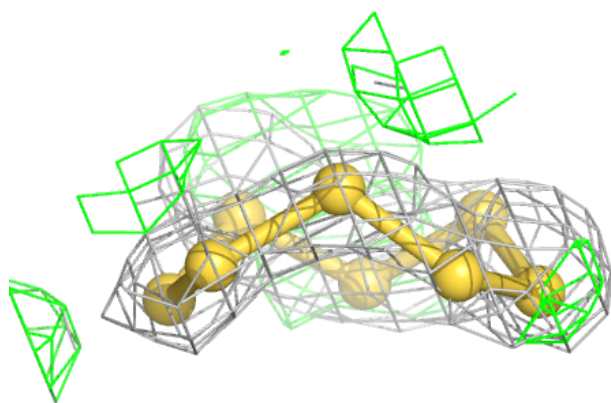
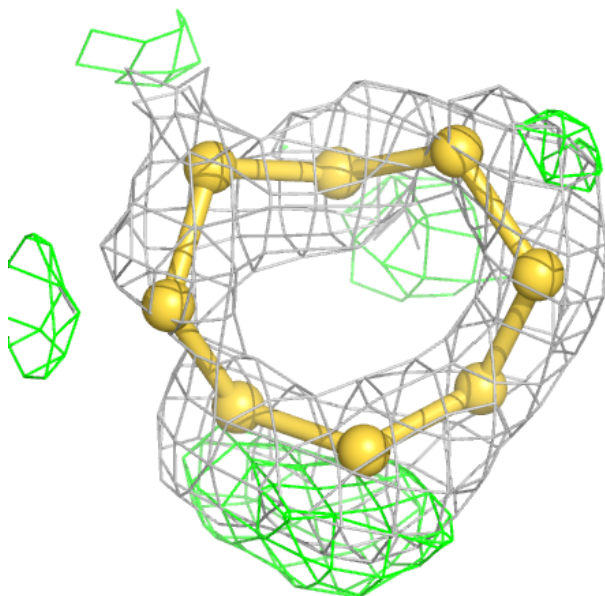
Electron density around DCQ A 500:

$2mF_o-DF_c$ (at 0.7 rmsd) in gray
 mF_o-DF_c (at 3 rmsd) in purple (negative)
and green (positive)



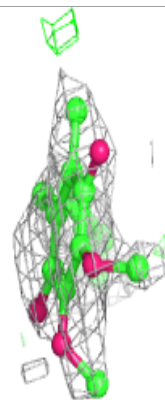
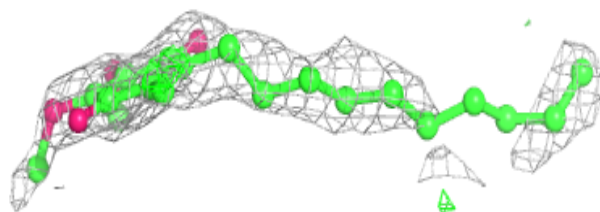
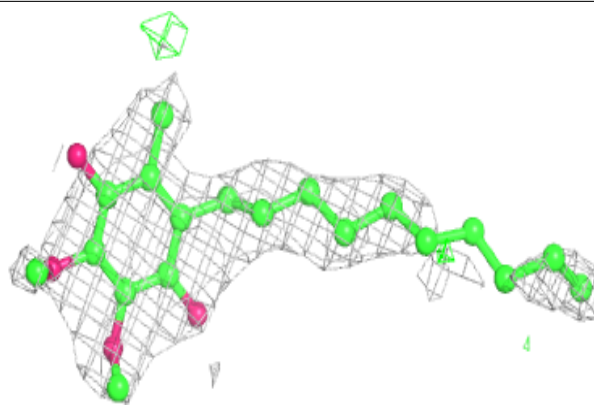
Electron density around PS9 F 800:

$2mF_o-DF_c$ (at 0.7 rmsd) in gray
 mF_o-DF_c (at 3 rmsd) in purple (negative)
and green (positive)

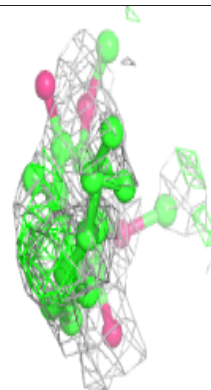
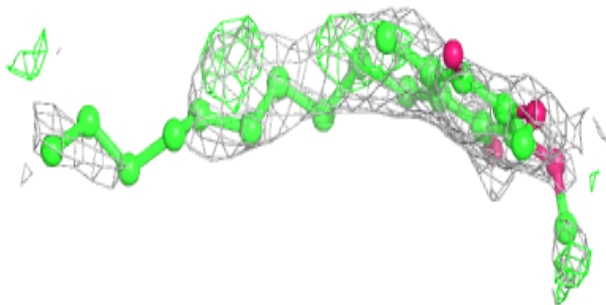
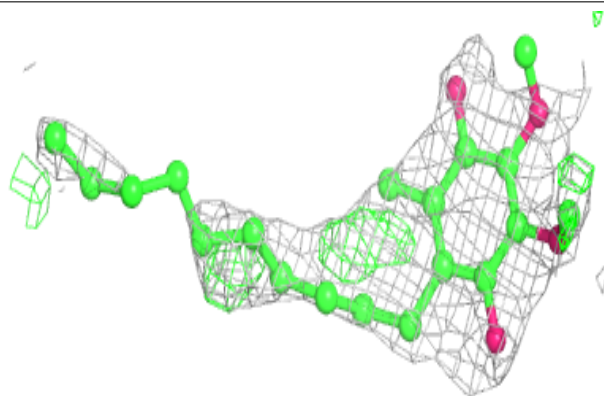


Electron density around DCQ E 500:

$2mF_o-DF_c$ (at 0.7 rmsd) in gray
 mF_o-DF_c (at 3 rmsd) in purple (negative)
and green (positive)

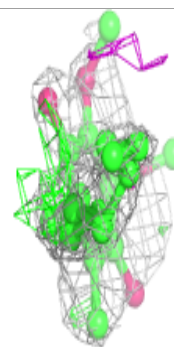
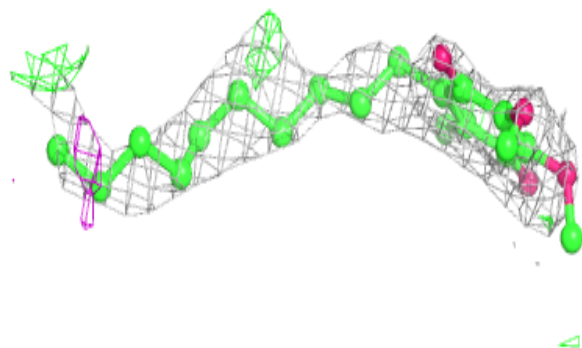
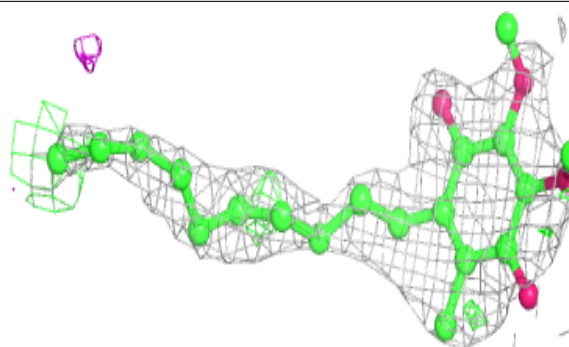
**Electron density around DCQ B 500:**

$2mF_o-DF_c$ (at 0.7 rmsd) in gray
 mF_o-DF_c (at 3 rmsd) in purple (negative)
and green (positive)

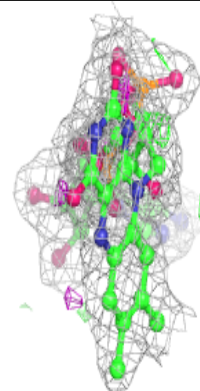
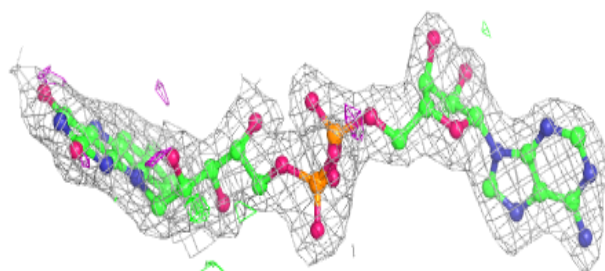
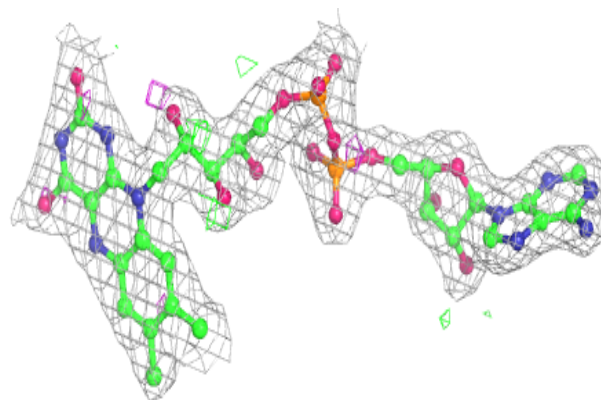


Electron density around DCQ C 500:

$2mF_o-DF_c$ (at 0.7 rmsd) in gray
 mF_o-DF_c (at 3 rmsd) in purple (negative)
and green (positive)

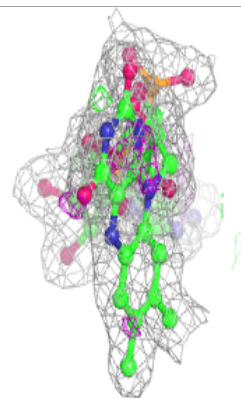
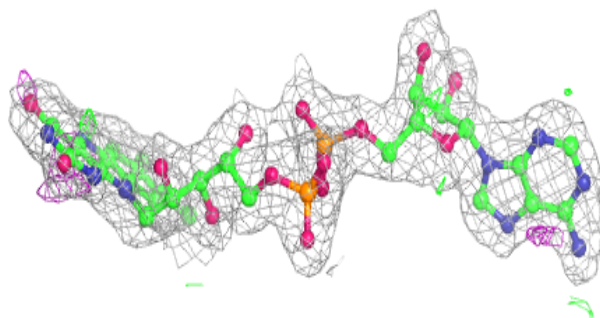
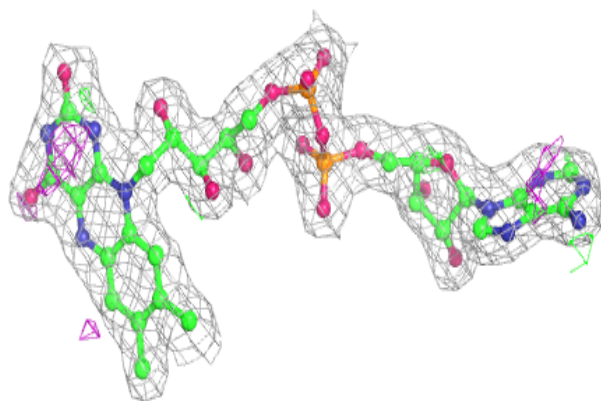
**Electron density around FAD E 441:**

$2mF_o-DF_c$ (at 0.7 rmsd) in gray
 mF_o-DF_c (at 3 rmsd) in purple (negative)
and green (positive)

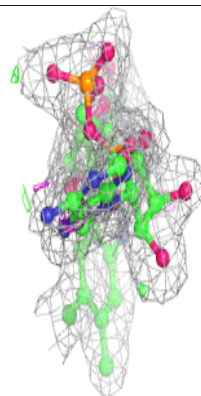
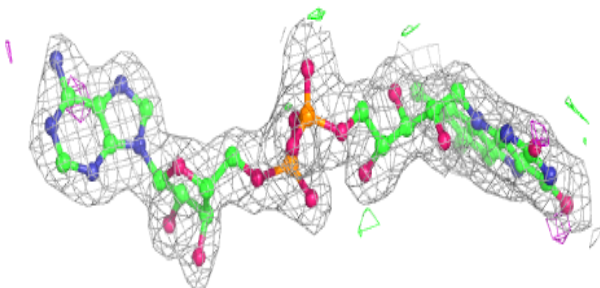
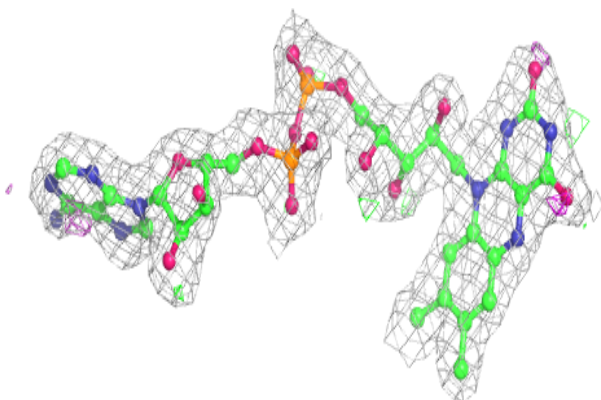


Electron density around FAD C 441:

$2mF_o-DF_c$ (at 0.7 rmsd) in gray
 mF_o-DF_c (at 3 rmsd) in purple (negative)
and green (positive)

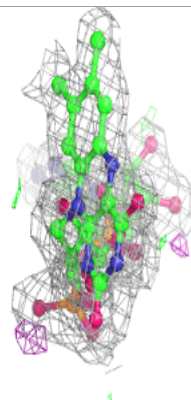
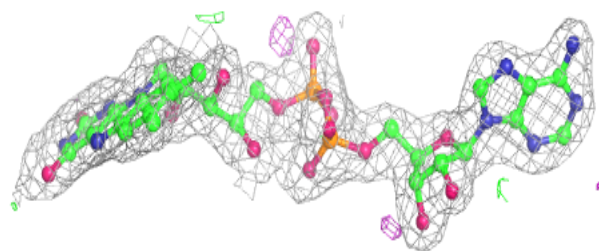
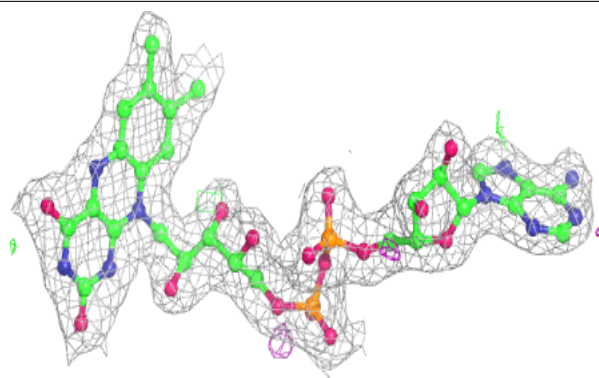
**Electron density around FAD F 441:**

$2mF_o-DF_c$ (at 0.7 rmsd) in gray
 mF_o-DF_c (at 3 rmsd) in purple (negative)
and green (positive)

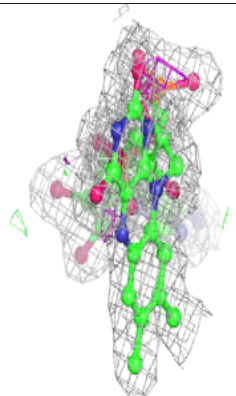
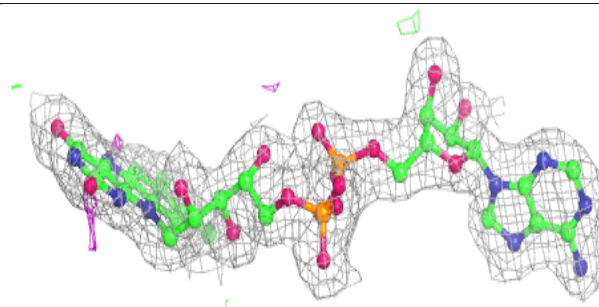
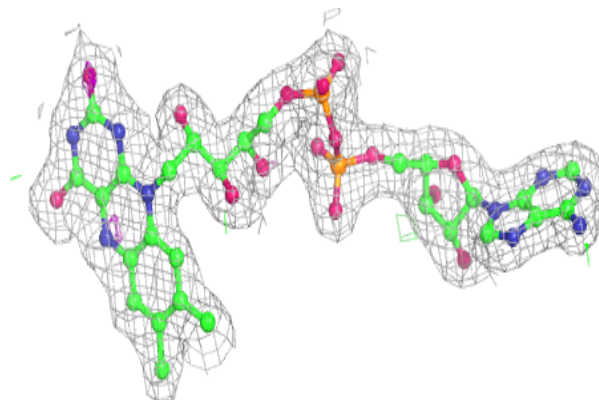


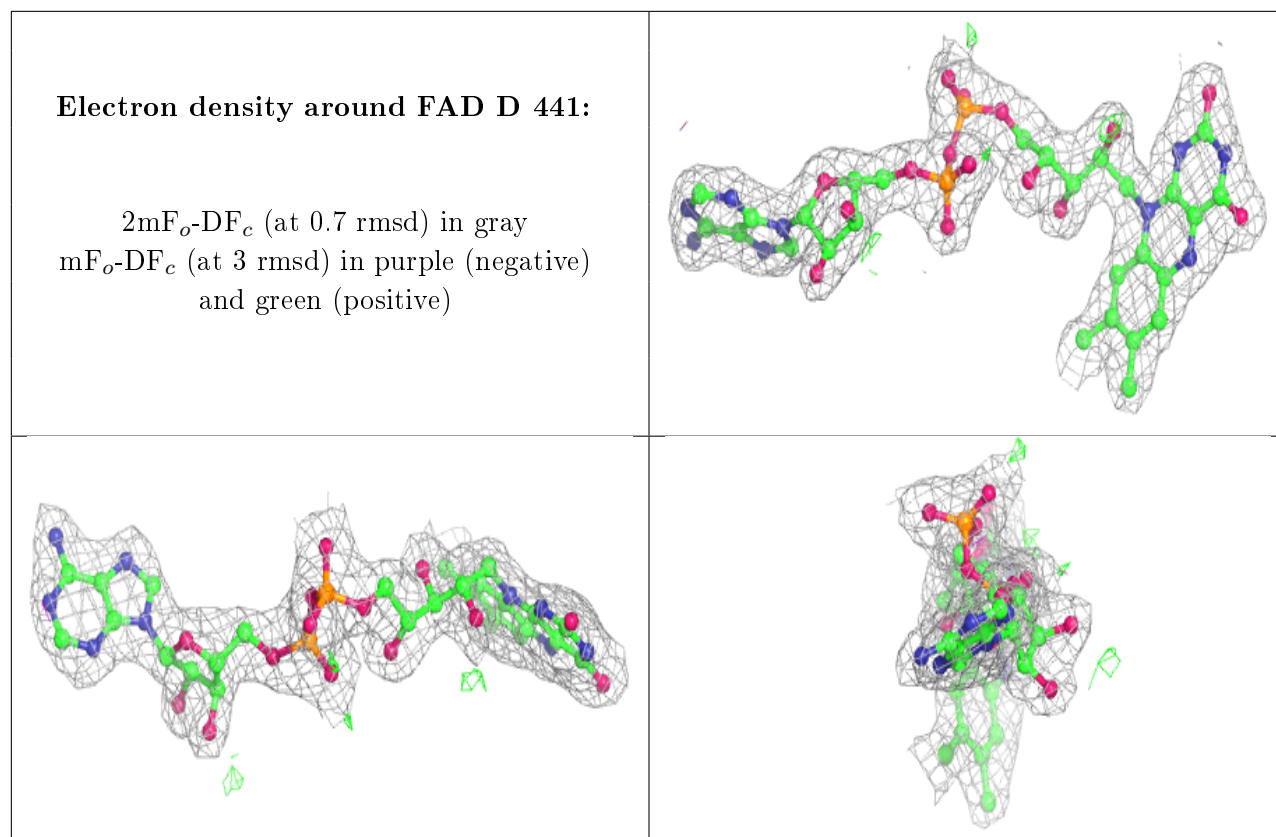
Electron density around FAD B 441:

$2mF_o-DF_c$ (at 0.7 rmsd) in gray
 mF_o-DF_c (at 3 rmsd) in purple (negative)
and green (positive)

**Electron density around FAD A 441:**

$2mF_o-DF_c$ (at 0.7 rmsd) in gray
 mF_o-DF_c (at 3 rmsd) in purple (negative)
and green (positive)





6.5 Other polymers [i](#)

There are no such residues in this entry.