



wwPDB X-ray Structure Validation Summary Report ⓘ

May 16, 2020 – 05:05 am BST

PDB ID : 6HZX
Title : Protein-aromatic foldamer complex crystal structure
Authors : Post, S.; Langlois d'Estaintot, B.; Fischer, L.; Granier, T.; Huc, I.
Deposited on : 2018-10-24
Resolution : 2.91 Å(reported)

This is a wwPDB X-ray Structure Validation Summary Report for a publicly released PDB entry.

We welcome your comments at validation@mail.wwpdb.org

A user guide is available at

<https://www.wwpdb.org/validation/2017/XrayValidationReportHelp>

with specific help available everywhere you see the ⓘ symbol.

The following versions of software and data (see [references ⓘ](#)) were used in the production of this report:

MolProbity : 4.02b-467
Mogul : 1.8.5 (274361), CSD as541be (2020)
Xtriage (Phenix) : 1.13
EDS : 2.11
buster-report : 1.1.7 (2018)
Percentile statistics : 20191225.v01 (using entries in the PDB archive December 25th 2019)
Refmac : 5.8.0158
CCP4 : 7.0.044 (Gargrove)
Ideal geometry (proteins) : Engh & Huber (2001)
Ideal geometry (DNA, RNA) : Parkinson et al. (1996)
Validation Pipeline (wwPDB-VP) : 2.11

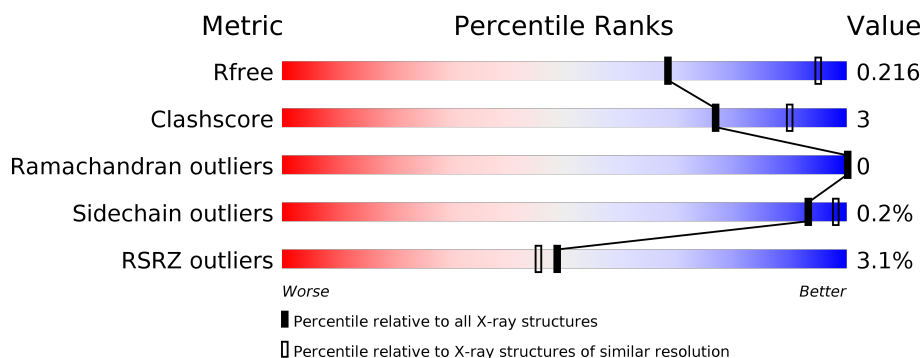
1 Overall quality at a glance ⓘ

The following experimental techniques were used to determine the structure:

X-RAY DIFFRACTION

The reported resolution of this entry is 2.91 Å.

Percentile scores (ranging between 0-100) for global validation metrics of the entry are shown in the following graphic. The table shows the number of entries on which the scores are based.



Metric	Whole archive (#Entries)	Similar resolution (#Entries, resolution range(Å))
R_{free}	130704	2307 (2.94-2.90)
Clashscore	141614	2531 (2.94-2.90)
Ramachandran outliers	138981	2462 (2.94-2.90)
Sidechain outliers	138945	2464 (2.94-2.90)
RSRZ outliers	127900	2248 (2.94-2.90)

The table below summarises the geometric issues observed across the polymeric chains and their fit to the electron density. The red, orange, yellow and green segments on the lower bar indicate the fraction of residues that contain outliers for ≥ 3 , 2, 1 and 0 types of geometric quality criteria respectively. A grey segment represents the fraction of residues that are not modelled. The numeric value for each fraction is indicated below the corresponding segment, with a dot representing fractions $\leq 5\%$. The upper red bar (where present) indicates the fraction of residues that have poor fit to the electron density. The numeric value is given above the bar.

Mol	Chain	Length	Quality of chain
1	A	257	<div> <div>4%</div> <div> <div></div> <div>91%</div> <div>9%</div> </div> </div>
1	B	257	<div> <div>3%</div> <div> <div></div> <div>92%</div> <div>8%</div> </div> </div>

2 Entry composition [i](#)

There are 10 unique types of molecules in this entry. The entry contains 4687 atoms, of which 0 are hydrogens and 0 are deuteriums.

In the tables below, the ZeroOcc column contains the number of atoms modelled with zero occupancy, the AltConf column contains the number of residues with at least one atom in alternate conformation and the Trace column contains the number of residues modelled with at most 2 atoms.

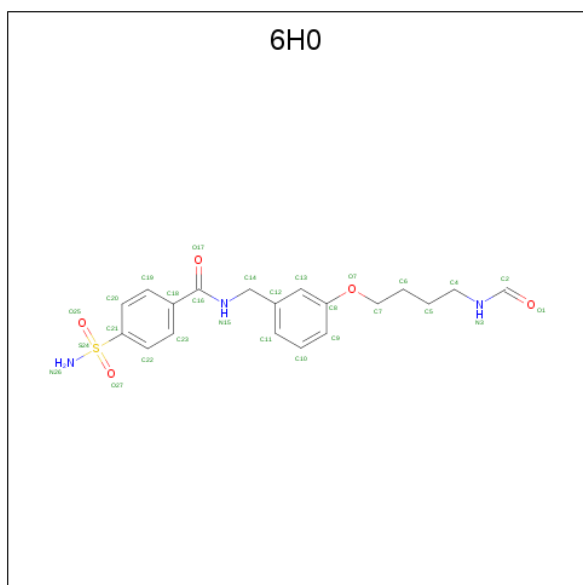
- Molecule 1 is a protein called Carbonic anhydrase 2.

Mol	Chain	Residues	Atoms					ZeroOcc	AltConf	Trace
1	A	257	Total	C	N	O	S	0	0	0
			1994	1278	339	375	2			
1	B	257	Total	C	N	O	S	0	0	0
			2002	1284	340	376	2			

- Molecule 2 is ZINC ION (three-letter code: ZN) (formula: Zn).

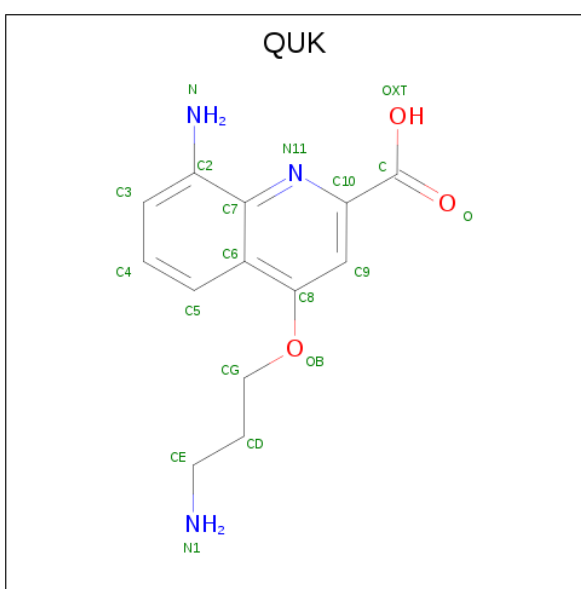
Mol	Chain	Residues	Atoms		ZeroOcc	AltConf
2	B	1	Total	Zn	0	0
			1	1		
2	A	1	Total	Zn	0	0
			1	1		

- Molecule 3 is {N}-[[3-(4-formamidobutoxy)phenyl]methyl]-4-sulfamoyl-benzamide (three-letter code: 6H0) (formula: C₁₉H₂₃N₃O₅S).



Mol	Chain	Residues	Atoms					ZeroOcc	AltConf
3	A	1	Total	C	N	O	S	0	0
			28	19	3	5	1		
3	A	1	Total	C	N	O	S	0	0
			28	19	3	5	1		
3	B	1	Total	C	N	O	S	0	0
			28	19	3	5	1		
3	B	1	Total	C	N	O	S	0	0
			28	19	3	5	1		

- Molecule 4 is 8-azanyl-4-(3-azanylpropoxy)quinoline-2-carboxylic acid (three-letter code: QUK) (formula: C₁₃H₁₅N₃O₃).



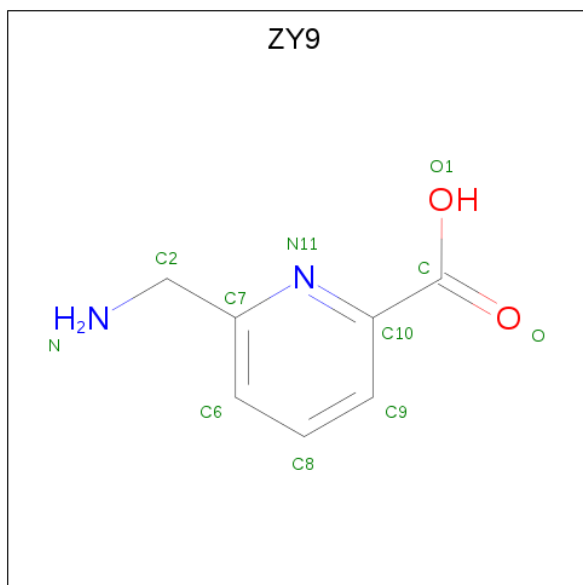
Mol	Chain	Residues	Atoms				ZeroOcc	AltConf
4	A	1	Total	C	N	O	0	0
			14	10	2	2		
4	A	1	Total	C	N	O	0	0
			19	13	3	3		
4	A	1	Total	C	N	O	0	0
			18	13	3	2		
4	A	1	Total	C	N	O	0	0
			19	13	3	3		
4	B	1	Total	C	N	O	0	0
			14	10	2	2		
4	B	1	Total	C	N	O	0	0
			19	13	3	3		
4	B	1	Total	C	N	O	0	0
			18	13	3	2		

Continued on next page...

Continued from previous page...

Mol	Chain	Residues	Atoms				ZeroOcc	AltConf
4	B	1	Total	C	N	O	0	0
			19	13	3	3		

- Molecule 5 is 6-(aminomethyl)pyridine-2-carboxylic acid (three-letter code: ZY9) (formula: $C_7H_8N_2O_2$).



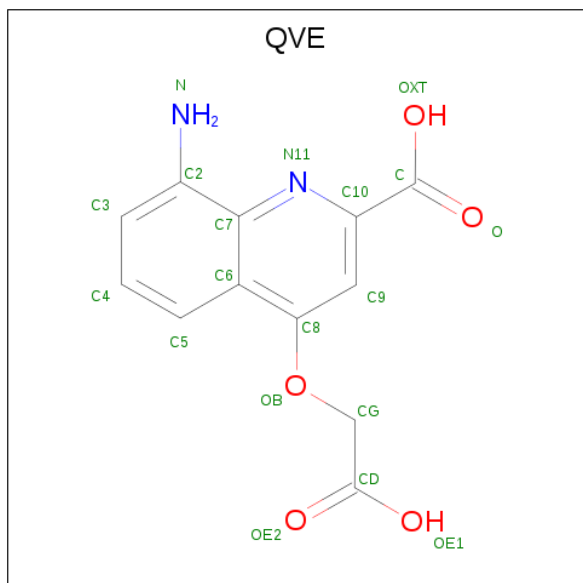
Mol	Chain	Residues	Atoms				ZeroOcc	AltConf
5	A	1	Total	C	N	O	0	0
			10	7	2	1		
5	A	1	Total	C	N	O	0	0
			10	7	2	1		
5	A	1	Total	C	N	O	0	0
			10	7	2	1		
5	A	1	Total	C	N	O	0	0
			10	7	2	1		
5	A	1	Total	C	N	O	0	0
			10	7	2	1		
5	B	1	Total	C	N	O	0	0
			10	7	2	1		
5	B	1	Total	C	N	O	0	0
			10	7	2	1		
5	B	1	Total	C	N	O	0	0
			10	7	2	1		

Continued on next page...

Continued from previous page...

Mol	Chain	Residues	Atoms				ZeroOcc	AltConf
5	B	1	Total	C	N	O	0	0
			10	7	2	1		
5	B	1	Total	C	N	O	0	0
			10	7	2	1		

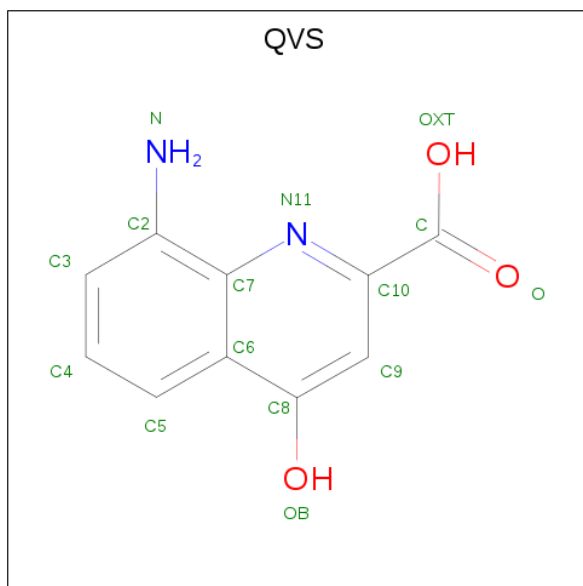
- Molecule 6 is 8-azanyl-4-(2-hydroxy-2-oxoethoxy)quinoline-2-carboxylic acid (three-letter code: QVE) (formula: $C_{12}H_{10}N_2O_5$).



Mol	Chain	Residues	Atoms				ZeroOcc	AltConf
6	A	1	Total	C	N	O	0	0
			18	12	2	4		
6	A	1	Total	C	N	O	0	0
			18	12	2	4		
6	A	1	Total	C	N	O	0	0
			18	12	2	4		
6	A	1	Total	C	N	O	0	0
			18	12	2	4		
6	B	1	Total	C	N	O	0	0
			18	12	2	4		
6	B	1	Total	C	N	O	0	0
			18	12	2	4		
6	B	1	Total	C	N	O	0	0
			18	12	2	4		
6	B	1	Total	C	N	O	0	0
			18	12	2	4		

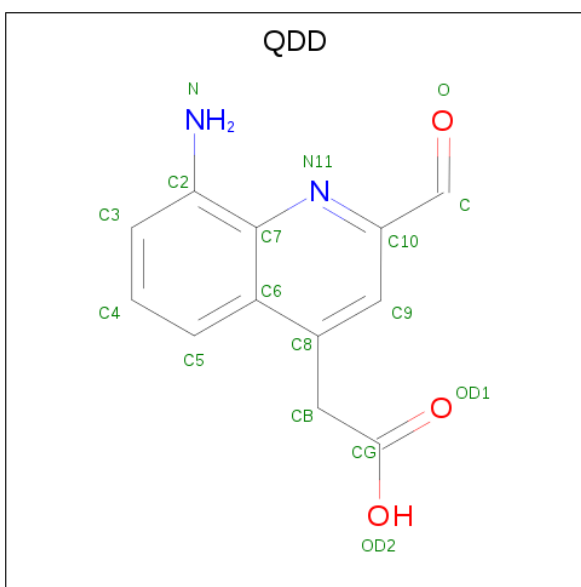
- Molecule 7 is 8-azanyl-4-oxidanyl-quinoline-2-carboxylic acid (three-letter code: QVS)

(formula: $C_{10}H_8N_2O_3$).



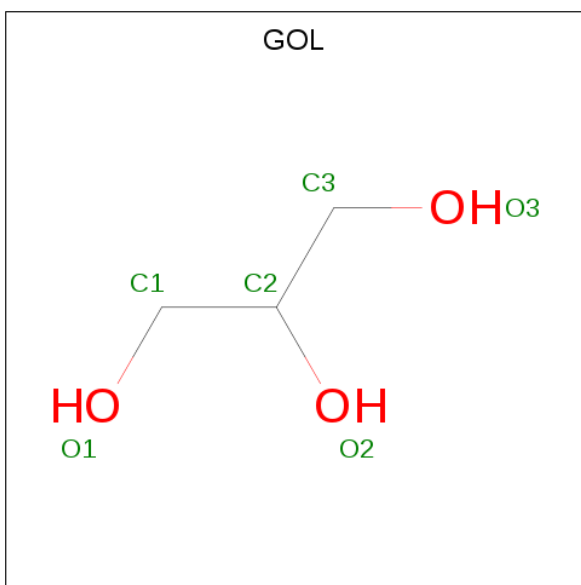
Mol	Chain	Residues	Atoms				ZeroOcc	AltConf
7	A	1	Total	C	N	O	0	0
			14	10	2	2		
7	A	1	Total	C	N	O	0	0
			14	10	2	2		
7	B	1	Total	C	N	O	0	0
			14	10	2	2		
7	B	1	Total	C	N	O	0	0
			14	10	2	2		

- Molecule 8 is 2-(8-azanyln-2-methanoyl-quinolin-4-yl)ethanoic acid (three-letter code: QDD) (formula: $C_{12}H_{10}N_2O_3$).



Mol	Chain	Residues	Atoms				ZeroOcc	AltConf
8	A	1	Total	C	N	O	0	0
			17	12	2	3		
8	A	1	Total	C	N	O	0	0
			17	12	2	3		
8	B	1	Total	C	N	O	0	0
			17	12	2	3		
8	B	1	Total	C	N	O	0	0
			17	12	2	3		

- Molecule 9 is GLYCEROL (three-letter code: GOL) (formula: $C_3H_8O_3$).



Mol	Chain	Residues	Atoms			ZeroOcc	AltConf
9	A	1	Total	C	O	0	0
			6	3	3		
9	A	1	Total	C	O	0	0
			6	3	3		
9	B	1	Total	C	O	0	0
			6	3	3		
9	B	1	Total	C	O	0	0
			6	3	3		

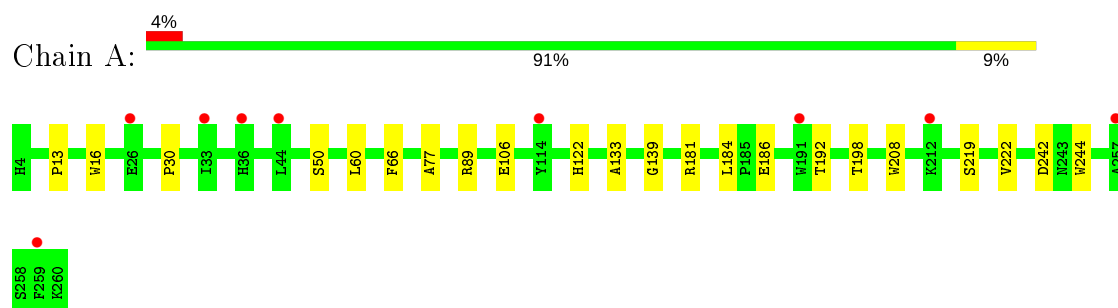
- Molecule 10 is water.

Mol	Chain	Residues	Atoms		ZeroOcc	AltConf
10	A	10	Total	O	0	0
			10	10		
10	B	15	Total	O	0	0
			15	15		

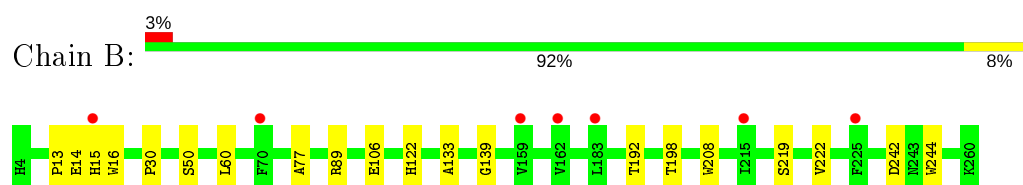
3 Residue-property plots [i](#)

These plots are drawn for all protein, RNA and DNA chains in the entry. The first graphic for a chain summarises the proportions of the various outlier classes displayed in the second graphic. The second graphic shows the sequence view annotated by issues in geometry and electron density. Residues are color-coded according to the number of geometric quality criteria for which they contain at least one outlier: green = 0, yellow = 1, orange = 2 and red = 3 or more. A red dot above a residue indicates a poor fit to the electron density ($RSRZ > 2$). Stretches of 2 or more consecutive residues without any outlier are shown as a green connector. Residues present in the sample, but not in the model, are shown in grey.

- Molecule 1: Carbonic anhydrase 2



- Molecule 1: Carbonic anhydrase 2



4 Data and refinement statistics

Property	Value	Source
Space group	P 43	Depositor
Cell constants a, b, c, α , β , γ	82.64Å 82.64Å 106.39Å 90.00° 90.00° 90.00°	Depositor
Resolution (Å)	44.73 – 2.91 44.73 – 2.91	Depositor EDS
% Data completeness (in resolution range)	99.5 (44.73-2.91) 99.5 (44.73-2.91)	Depositor EDS
R_{merge}	0.09	Depositor
R_{sym}	(Not available)	Depositor
$\langle I/\sigma(I) \rangle$ ¹	2.27 (at 2.90Å)	Xtriage
Refinement program	REFMAC	Depositor
R, R_{free}	0.171 , 0.210 0.177 , 0.216	Depositor DCC
R_{free} test set	785 reflections (5.00%)	wwPDB-VP
Wilson B-factor (Å ²)	59.7	Xtriage
Anisotropy	0.847	Xtriage
Bulk solvent k_{sol} (e/Å ³), B_{sol} (Å ²)	0.33 , 53.2	EDS
L-test for twinning ²	$\langle L \rangle = 0.50$, $\langle L^2 \rangle = 0.33$	Xtriage
Estimated twinning fraction	0.054 for h,-k,-l	Xtriage
F_o, F_c correlation	0.96	EDS
Total number of atoms	4687	wwPDB-VP
Average B, all atoms (Å ²)	88.0	wwPDB-VP

Xtriage's analysis on translational NCS is as follows: *The largest off-origin peak in the Patterson function is 3.89% of the height of the origin peak. No significant pseudotranslation is detected.*

¹Intensities estimated from amplitudes.

²Theoretical values of $\langle |L| \rangle$, $\langle L^2 \rangle$ for acentric reflections are 0.5, 0.333 respectively for untwinned datasets, and 0.375, 0.2 for perfectly twinned datasets.

5 Model quality

5.1 Standard geometry

Bond lengths and bond angles in the following residue types are not validated in this section: GOL, ZN, QVE, QDD, 6H0, QUK, ZY9, QVS

The Z score for a bond length (or angle) is the number of standard deviations the observed value is removed from the expected value. A bond length (or angle) with $|Z| > 5$ is considered an outlier worth inspection. RMSZ is the root-mean-square of all Z scores of the bond lengths (or angles).

Mol	Chain	Bond lengths		Bond angles	
		RMSZ	# Z >5	RMSZ	# Z >5
1	A	0.63	0/2054	0.74	0/2803
1	B	0.64	0/2063	0.73	0/2814
All	All	0.63	0/4117	0.73	0/5617

There are no bond length outliers.

There are no bond angle outliers.

There are no chirality outliers.

There are no planarity outliers.

5.2 Too-close contacts

In the following table, the Non-H and H(model) columns list the number of non-hydrogen atoms and hydrogen atoms in the chain respectively. The H(added) column lists the number of hydrogen atoms added and optimized by MolProbity. The Clashes column lists the number of clashes within the asymmetric unit, whereas Symm-Clashes lists symmetry related clashes.

Mol	Chain	Non-H	H(model)	H(added)	Clashes	Symm-Clashes
1	A	1994	0	1874	13	0
1	B	2002	0	1887	12	0
2	A	1	0	0	0	0
2	B	1	0	0	0	0
3	A	56	0	0	1	0
3	B	56	0	0	1	0
4	A	70	0	0	0	0
4	B	70	0	0	0	0
5	A	60	0	0	0	0
5	B	60	0	0	0	0
6	A	72	0	0	0	0

Continued on next page...

Continued from previous page...

Mol	Chain	Non-H	H(model)	H(added)	Clashes	Symm-Clashes
6	B	72	0	0	0	0
7	A	28	0	0	0	0
7	B	28	0	0	0	0
8	A	34	0	0	0	0
8	B	34	0	0	0	0
9	A	12	0	16	0	0
9	B	12	0	16	0	0
10	A	10	0	0	0	0
10	B	15	0	0	0	0
All	All	4687	0	3793	25	0

The all-atom clashscore is defined as the number of clashes found per 1000 atoms (including hydrogen atoms). The all-atom clashscore for this structure is 3.

The worst 5 of 25 close contacts within the same asymmetric unit are listed below, sorted by their clash magnitude.

Atom-1	Atom-2	Interatomic distance (Å)	Clash overlap (Å)
1:B:219:SER:HA	1:B:222:VAL:HG12	1.92	0.52
1:A:219:SER:HA	1:A:222:VAL:HG12	1.92	0.51
1:A:50:SER:O	1:A:77:ALA:HA	2.11	0.50
1:A:242:ASP:HA	1:A:244:TRP:CD1	2.47	0.50
1:A:60:LEU:HD12	1:A:60:LEU:O	2.13	0.48

There are no symmetry-related clashes.

5.3 Torsion angles [i](#)

5.3.1 Protein backbone [i](#)

In the following table, the Percentiles column shows the percent Ramachandran outliers of the chain as a percentile score with respect to all X-ray entries followed by that with respect to entries of similar resolution.

The Analysed column shows the number of residues for which the backbone conformation was analysed, and the total number of residues.

Mol	Chain	Analysed	Favoured	Allowed	Outliers	Percentiles	
1	A	255/257 (99%)	243 (95%)	12 (5%)	0	100	100
1	B	255/257 (99%)	243 (95%)	12 (5%)	0	100	100
All	All	510/514 (99%)	486 (95%)	24 (5%)	0	100	100

There are no Ramachandran outliers to report.

5.3.2 Protein sidechains ⓘ

In the following table, the Percentiles column shows the percent sidechain outliers of the chain as a percentile score with respect to all X-ray entries followed by that with respect to entries of similar resolution.

The Analysed column shows the number of residues for which the sidechain conformation was analysed, and the total number of residues.

Mol	Chain	Analysed	Rotameric	Outliers	Percentiles	
1	A	208/222 (94%)	207 (100%)	1 (0%)	88	96
1	B	210/222 (95%)	210 (100%)	0	100	100
All	All	418/444 (94%)	417 (100%)	1 (0%)	93	98

All (1) residues with a non-rotameric sidechain are listed below:

Mol	Chain	Res	Type
1	A	186	GLU

Some sidechains can be flipped to improve hydrogen bonding and reduce clashes. All (1) such sidechains are listed below:

Mol	Chain	Res	Type
1	A	229	ASN

5.3.3 RNA ⓘ

There are no RNA molecules in this entry.

5.4 Non-standard residues in protein, DNA, RNA chains ⓘ

There are no non-standard protein/DNA/RNA residues in this entry.

5.5 Carbohydrates ⓘ

There are no carbohydrates in this entry.

5.6 Ligand geometry

Of 46 ligands modelled in this entry, 2 are monoatomic - leaving 44 for Mogul analysis.

In the following table, the Counts columns list the number of bonds (or angles) for which Mogul statistics could be retrieved, the number of bonds (or angles) that are observed in the model and the number of bonds (or angles) that are defined in the Chemical Component Dictionary. The Link column lists molecule types, if any, to which the group is linked. The Z score for a bond length (or angle) is the number of standard deviations the observed value is removed from the expected value. A bond length (or angle) with $|Z| > 2$ is considered an outlier worth inspection. RMSZ is the root-mean-square of all Z scores of the bond lengths (or angles).

Mol	Type	Chain	Res	Link	Bond lengths			Bond angles		
					Counts	RMSZ	# $ Z > 2$	Counts	RMSZ	# $ Z > 2$
5	ZY9	A	309	8,6	10,10,11	4.19	2 (20%)	11,12,14	2.62	4 (36%)
4	QUK	B	321	6	17,20,20	0.80	0	20,27,27	2.18	5 (25%)
5	ZY9	B	314	4,6	10,10,11	4.37	2 (20%)	11,12,14	2.22	4 (36%)
5	ZY9	B	304	4,6	10,10,11	4.18	2 (20%)	11,12,14	2.40	4 (36%)
5	ZY9	A	304	4,6	10,10,11	4.31	2 (20%)	11,12,14	2.26	4 (36%)
7	QVS	B	316	5,6	15,15,16	2.36	2 (13%)	19,21,23	2.37	4 (21%)
5	ZY9	A	307	8,7	10,10,11	4.38	2 (20%)	11,12,14	2.14	5 (45%)
5	ZY9	B	309	8,6	10,10,11	4.23	2 (20%)	11,12,14	2.45	4 (36%)
6	QVE	B	315	5,7	16,19,20	2.37	1 (6%)	20,26,28	2.23	6 (30%)
8	QDD	B	308	5	15,18,18	1.85	3 (20%)	19,25,25	2.80	5 (26%)
6	QVE	B	320	5,4	16,19,20	1.94	1 (6%)	20,26,28	2.56	8 (40%)
3	6H0	A	312	4	29,29,29	2.33	5 (17%)	37,38,38	1.63	5 (13%)
8	QDD	A	318	5	15,18,18	2.13	3 (20%)	19,25,25	2.32	5 (26%)
8	QDD	A	308	5	15,18,18	2.16	2 (13%)	19,25,25	2.68	6 (31%)
4	QUK	B	313	3,5	19,19,20	2.08	2 (10%)	22,25,27	4.70	11 (50%)
5	ZY9	A	319	8,6	10,10,11	3.57	2 (20%)	11,12,14	2.29	4 (36%)
4	QUK	A	311	6	17,20,20	0.70	0	20,27,27	1.91	5 (25%)
7	QVS	A	306	5,6	15,15,16	2.55	1 (6%)	19,21,23	2.25	5 (26%)
9	GOL	B	322	-	5,5,5	0.11	0	5,5,5	0.31	0
3	6H0	B	302	2,4	29,29,29	1.97	5 (17%)	37,38,38	1.49	4 (10%)
9	GOL	B	323	-	5,5,5	0.09	0	5,5,5	0.29	0
5	ZY9	B	307	8,7	10,10,11	3.74	2 (20%)	11,12,14	2.22	5 (45%)
4	QUK	B	311	6	17,20,20	0.77	0	20,27,27	1.92	4 (20%)
6	QVE	A	305	5,7	16,19,20	2.11	1 (6%)	20,26,28	2.25	6 (30%)
6	QVE	A	320	5,4	16,19,20	2.10	1 (6%)	20,26,28	2.49	5 (25%)
5	ZY9	B	319	8,6	10,10,11	3.36	2 (20%)	11,12,14	2.31	6 (54%)

Mol	Type	Chain	Res	Link	Bond lengths			Bond angles		
					Counts	RMSZ	# Z > 2	Counts	RMSZ	# Z > 2
5	ZY9	B	317	8,7	10,10,11	4.40	2 (20%)	11,12,14	2.24	4 (36%)
5	ZY9	A	317	8,7	10,10,11	4.36	2 (20%)	11,12,14	1.86	4 (36%)
5	ZY9	A	314	4,6	10,10,11	4.47	2 (20%)	11,12,14	1.92	4 (36%)
6	QVE	A	310	5,4	16,19,20	2.11	1 (6%)	20,26,28	2.14	6 (30%)
9	GOL	A	322	-	5,5,5	0.10	0	5,5,5	0.26	0
6	QVE	A	315	5,7	16,19,20	2.57	1 (6%)	20,26,28	2.03	4 (20%)
9	GOL	A	323	-	5,5,5	0.12	0	5,5,5	0.39	0
4	QUK	B	303	3,5	15,15,20	2.35	1 (6%)	19,21,27	2.42	5 (26%)
7	QVS	B	306	5,6	15,15,16	2.48	1 (6%)	19,21,23	2.16	5 (26%)
4	QUK	A	313	3,5	19,19,20	2.06	2 (10%)	22,25,27	4.59	11 (50%)
4	QUK	A	321	6	17,20,20	0.80	0	20,27,27	1.80	3 (15%)
6	QVE	B	310	5,4	16,19,20	1.67	2 (12%)	20,26,28	2.25	5 (25%)
8	QDD	B	318	5	15,18,18	1.83	2 (13%)	19,25,25	2.35	4 (21%)
6	QVE	B	305	5,7	16,19,20	2.36	1 (6%)	20,26,28	1.98	5 (25%)
7	QVS	A	316	5,6	15,15,16	2.34	1 (6%)	19,21,23	2.37	5 (26%)
3	6H0	B	312	4	29,29,29	2.18	5 (17%)	37,38,38	1.47	5 (13%)
3	6H0	A	302	2,4	29,29,29	2.12	5 (17%)	37,38,38	1.32	6 (16%)
4	QUK	A	303	3,5	15,15,20	1.91	2 (13%)	19,21,27	2.95	6 (31%)

In the following table, the Chirals column lists the number of chiral outliers, the number of chiral centers analysed, the number of these observed in the model and the number defined in the Chemical Component Dictionary. Similar counts are reported in the Torsion and Rings columns. '-' means no outliers of that kind were identified.

Mol	Type	Chain	Res	Link	Chirals	Torsions	Rings
5	ZY9	A	309	8,6	-	2/4/4/6	0/1/1/1
4	QUK	B	321	6	-	0/5/9/9	0/2/2/2
5	ZY9	B	314	4,6	-	0/4/4/6	0/1/1/1
5	ZY9	B	304	4,6	-	0/4/4/6	0/1/1/1
5	ZY9	A	304	4,6	-	0/4/4/6	0/1/1/1
7	QVS	B	316	5,6	-	0/2/2/4	0/2/2/2
5	ZY9	A	307	8,7	-	0/4/4/6	0/1/1/1
5	ZY9	B	309	8,6	-	2/4/4/6	0/1/1/1
6	QVE	B	315	5,7	-	3/5/7/9	0/2/2/2
8	QDD	B	308	5	-	2/4/6/6	0/2/2/2
6	QVE	B	320	5,4	-	2/5/7/9	0/2/2/2
3	6H0	A	312	4	-	6/23/23/23	0/2/2/2

Continued on next page...

Continued from previous page...

Mol	Type	Chain	Res	Link	Chirals	Torsions	Rings
8	QDD	A	318	5	-	2/4/6/6	0/2/2/2
8	QDD	A	308	5	-	0/4/6/6	0/2/2/2
4	QUK	B	313	3,5	-	2/7/7/9	0/2/2/2
5	ZY9	A	319	8,6	-	0/4/4/6	0/1/1/1
4	QUK	A	311	6	-	1/5/9/9	0/2/2/2
7	QVS	A	306	5,6	-	2/2/2/4	0/2/2/2
9	GOL	B	322	-	-	2/4/4/4	-
3	6H0	B	302	2,4	-	8/23/23/23	0/2/2/2
9	GOL	B	323	-	-	0/4/4/4	-
5	ZY9	B	307	8,7	-	0/4/4/6	0/1/1/1
4	QUK	B	311	6	-	2/5/9/9	0/2/2/2
6	QVE	A	305	5,7	-	3/5/7/9	0/2/2/2
6	QVE	A	320	5,4	-	3/5/7/9	0/2/2/2
5	ZY9	B	319	8,6	-	1/4/4/6	0/1/1/1
5	ZY9	B	317	8,7	-	0/4/4/6	0/1/1/1
5	ZY9	A	317	8,7	-	0/4/4/6	0/1/1/1
5	ZY9	A	314	4,6	-	0/4/4/6	0/1/1/1
6	QVE	A	310	5,4	-	2/5/7/9	0/2/2/2
9	GOL	A	322	-	-	0/4/4/4	-
6	QVE	A	315	5,7	-	2/5/7/9	0/2/2/2
9	GOL	A	323	-	-	1/4/4/4	-
4	QUK	B	303	3,5	-	0/2/2/9	0/2/2/2
7	QVS	B	306	5,6	-	1/2/2/4	0/2/2/2
4	QUK	A	313	3,5	-	3/7/7/9	0/2/2/2
4	QUK	A	321	6	-	1/5/9/9	0/2/2/2
6	QVE	B	310	5,4	-	0/5/7/9	0/2/2/2
8	QDD	B	318	5	-	2/4/6/6	0/2/2/2
6	QVE	B	305	5,7	-	0/5/7/9	0/2/2/2
7	QVS	A	316	5,6	-	2/2/2/4	0/2/2/2
3	6H0	B	312	4	-	6/23/23/23	0/2/2/2
3	6H0	A	302	2,4	-	8/23/23/23	0/2/2/2
4	QUK	A	303	3,5	-	0/2/2/9	0/2/2/2

The worst 5 of 75 bond length outliers are listed below:

Mol	Chain	Res	Type	Atoms	Z	Observed(Å)	Ideal(Å)
5	B	314	ZY9	C2-C7	-12.48	1.36	1.51
5	A	314	ZY9	C2-C7	-12.16	1.37	1.51
5	A	304	ZY9	C2-C7	-11.77	1.37	1.51

Continued on next page...

Continued from previous page...

Mol	Chain	Res	Type	Atoms	Z	Observed(Å)	Ideal(Å)
5	A	307	ZY9	C2-C7	-11.45	1.38	1.51
5	B	309	ZY9	C2-C7	-11.19	1.38	1.51

The worst 5 of 206 bond angle outliers are listed below:

Mol	Chain	Res	Type	Atoms	Z	Observed(°)	Ideal(°)
4	B	313	QUK	C-C10-N11	11.85	126.27	114.66
4	A	313	QUK	C-C10-N11	11.48	125.92	114.66
8	B	308	QDD	C10-N11-C7	8.93	124.89	118.11
4	B	313	QUK	C9-C10-C	-8.89	113.54	121.23
4	A	313	QUK	C7-C2-N	8.81	134.86	118.07

There are no chirality outliers.

5 of 71 torsion outliers are listed below:

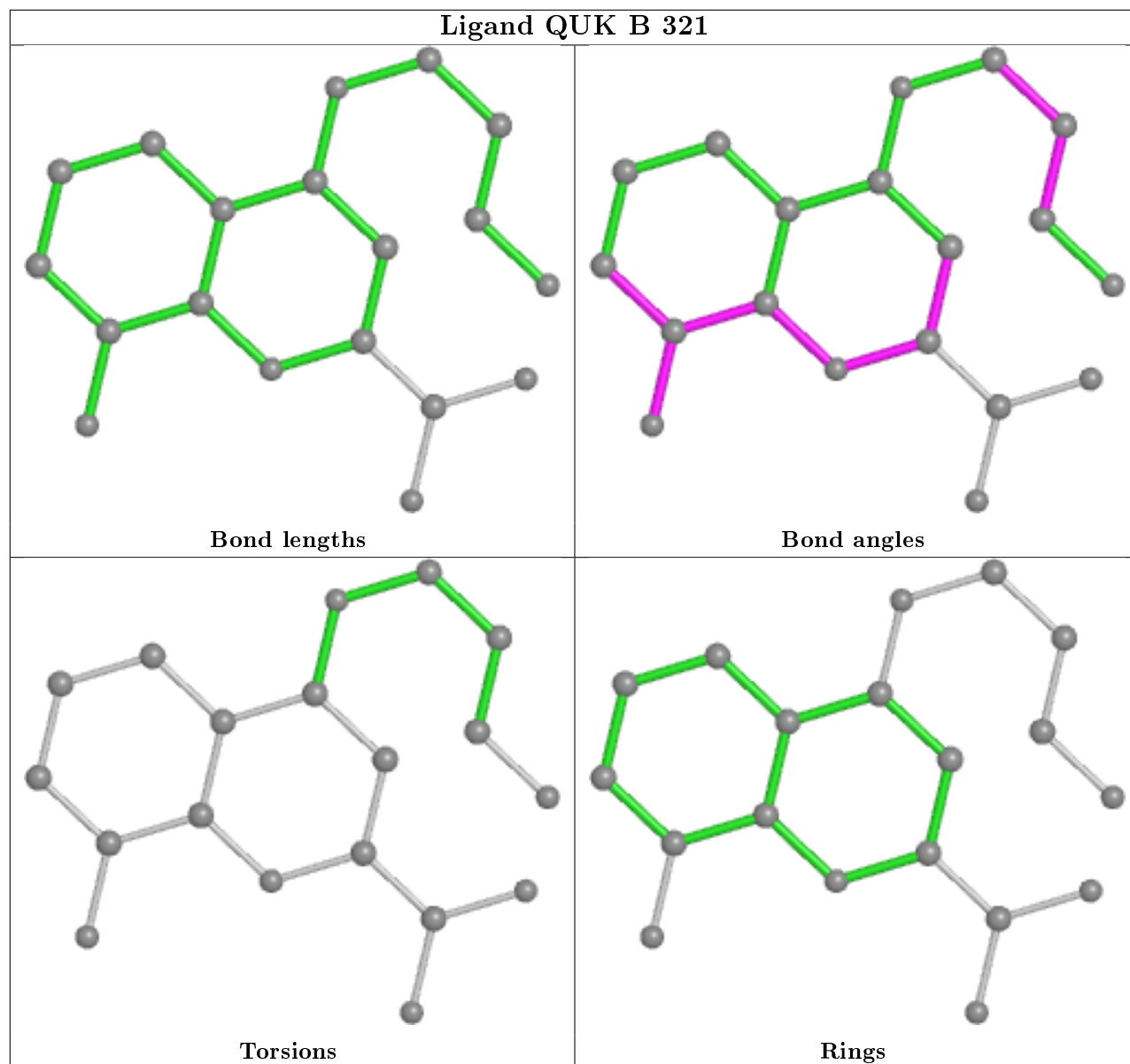
Mol	Chain	Res	Type	Atoms
5	A	309	ZY9	O-C-C10-N11
5	A	309	ZY9	O-C-C10-C9
5	B	309	ZY9	O-C-C10-N11
5	B	309	ZY9	O-C-C10-C9
8	A	318	QDD	C9-C8-CB-CG

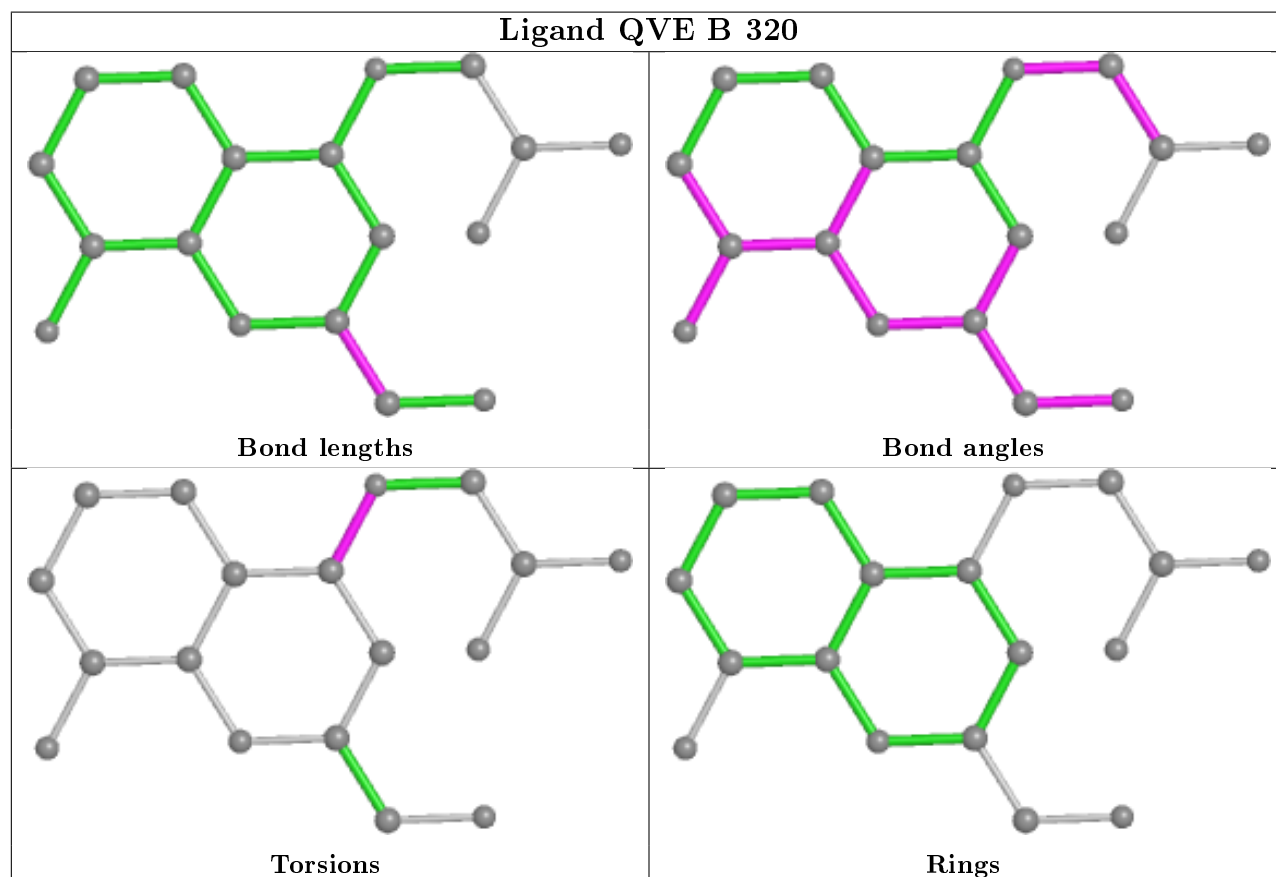
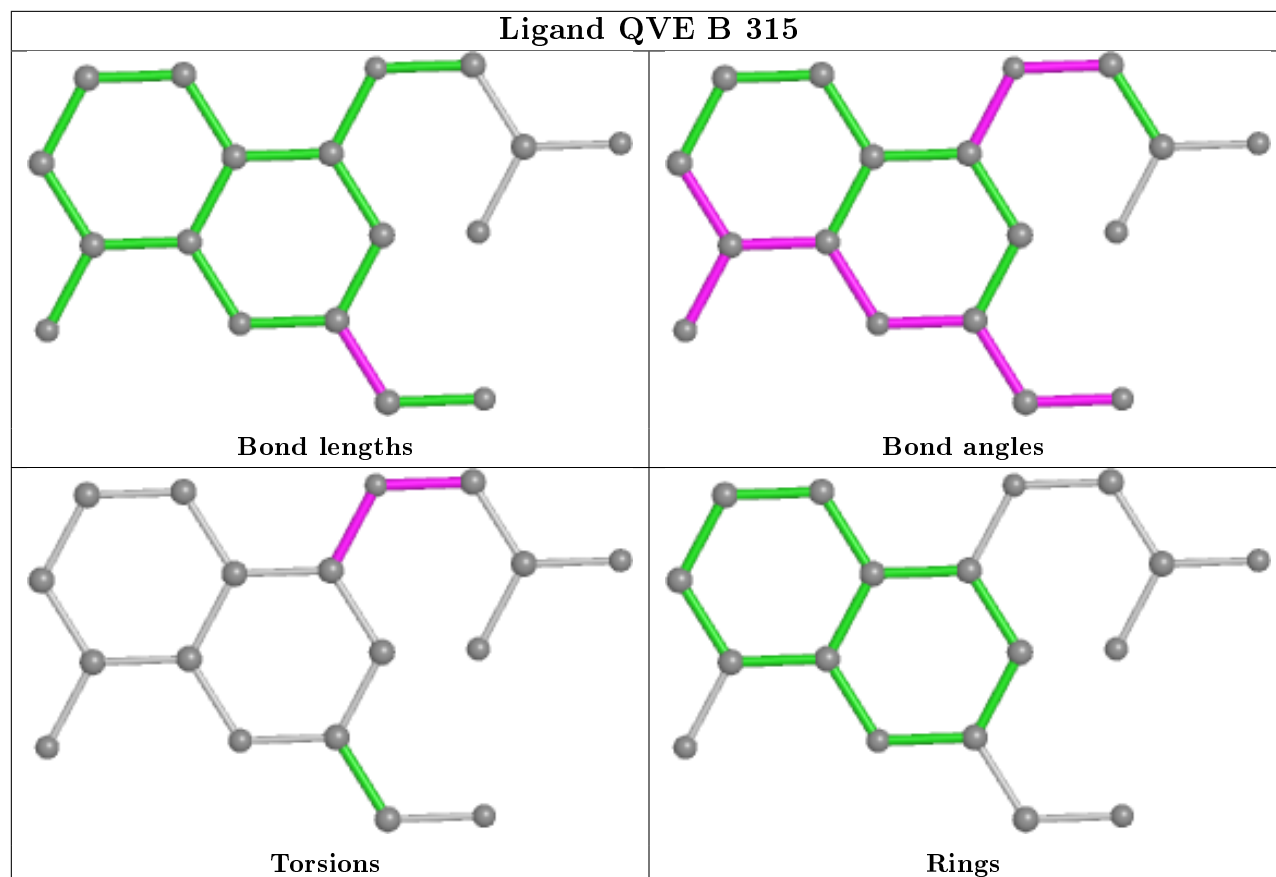
There are no ring outliers.

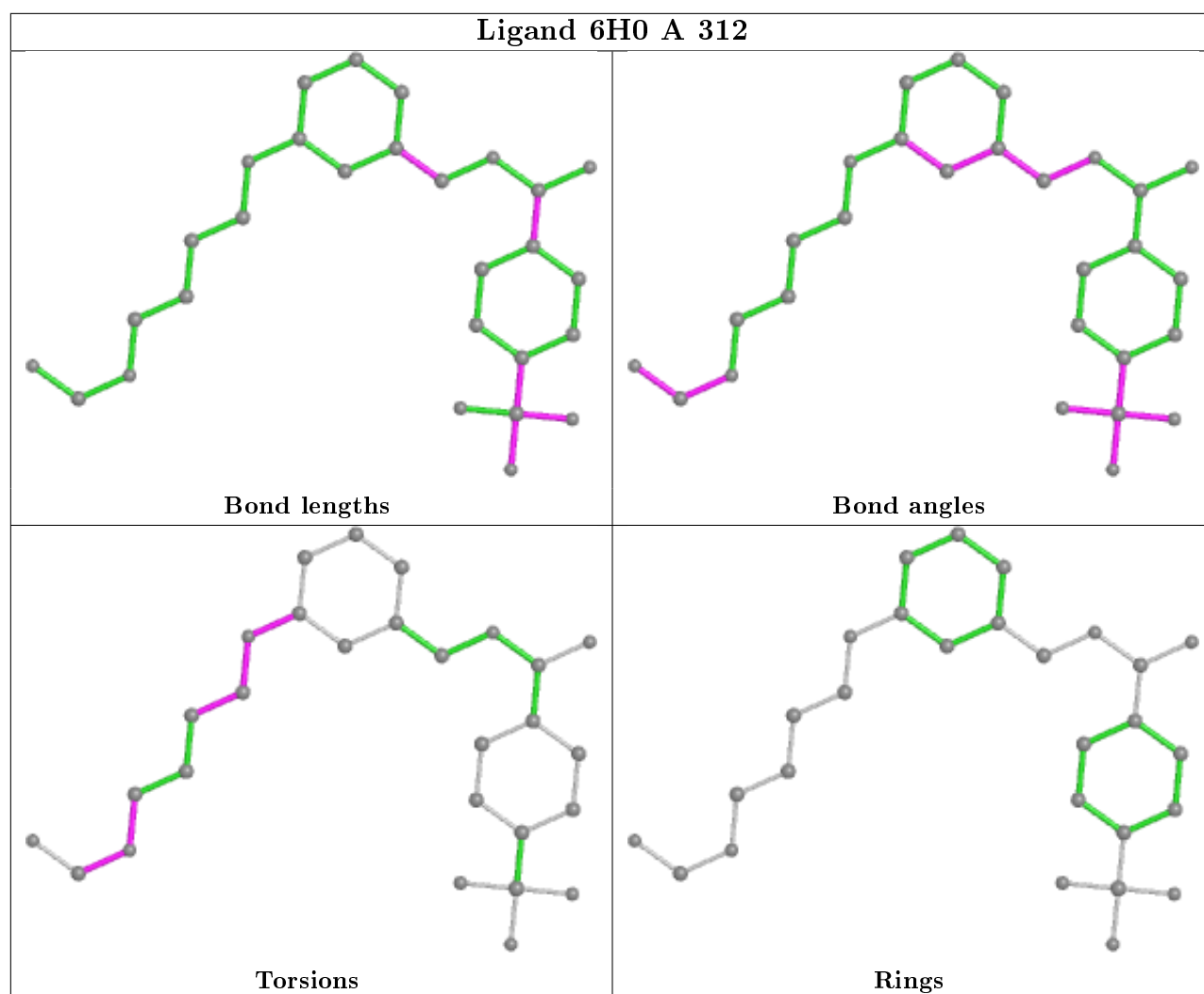
2 monomers are involved in 2 short contacts:

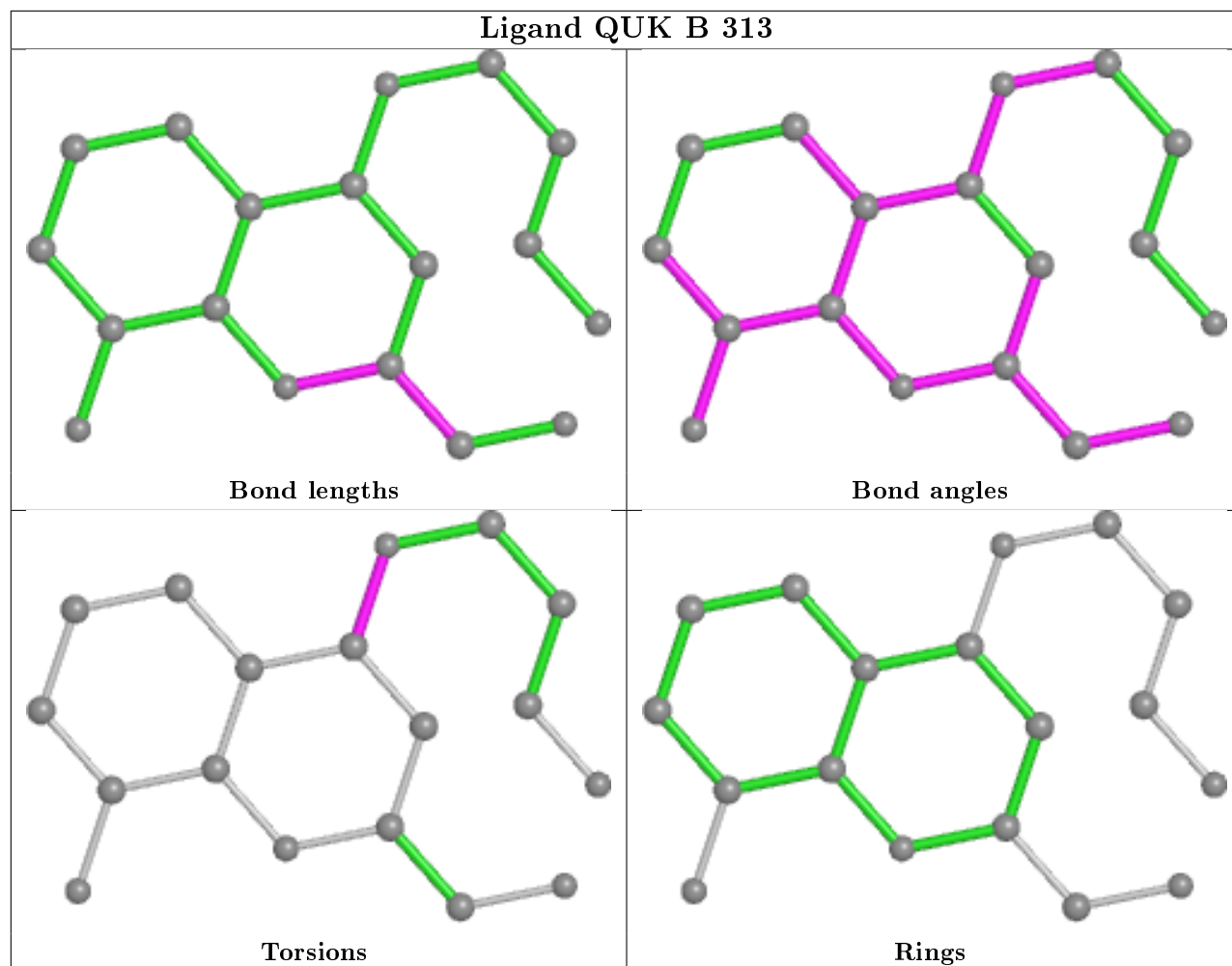
Mol	Chain	Res	Type	Clashes	Symm-Clashes
3	B	302	6H0	1	0
3	A	302	6H0	1	0

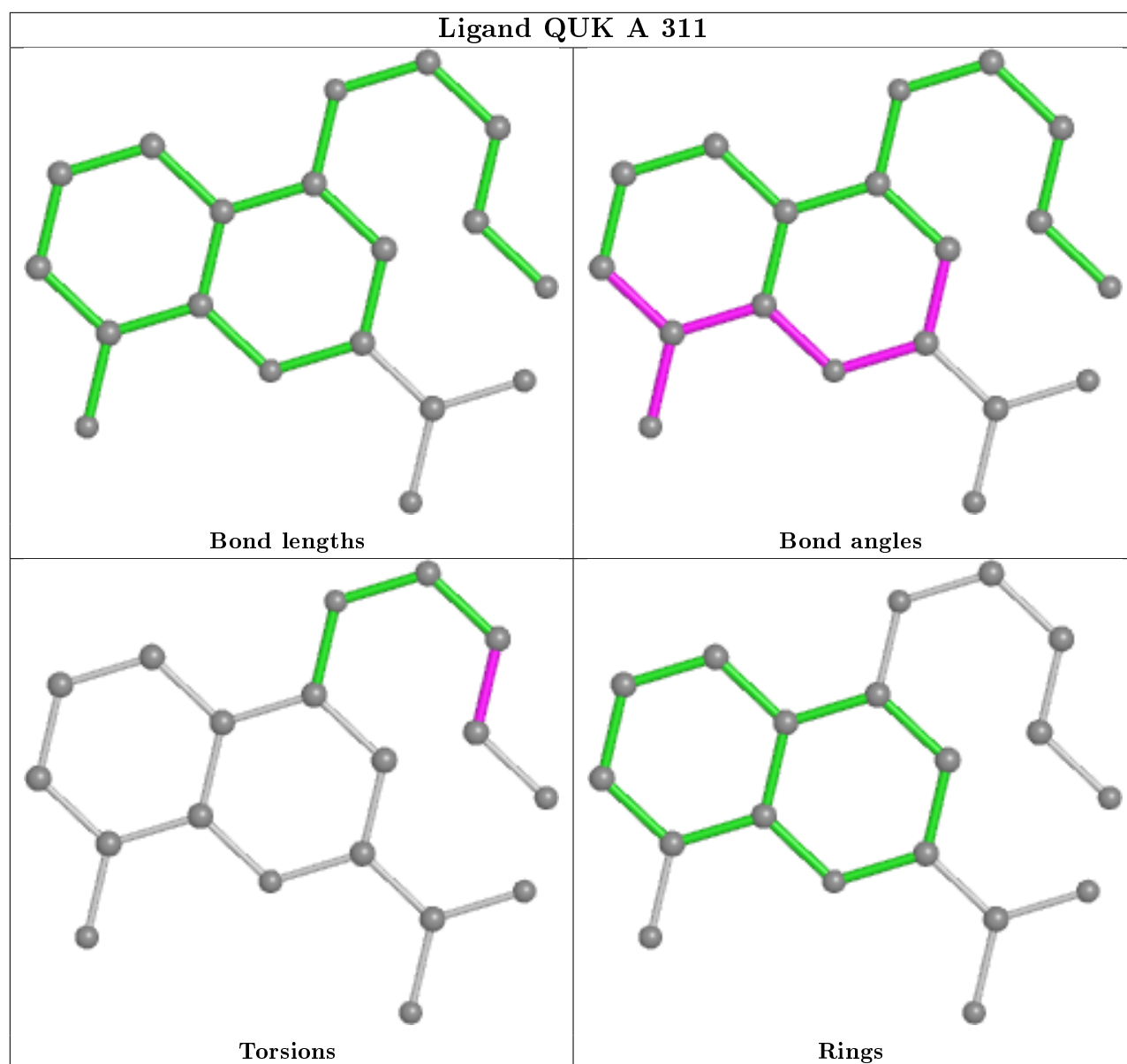
The following is a two-dimensional graphical depiction of Mogul quality analysis of bond lengths, bond angles, torsion angles, and ring geometry for all instances of the Ligand of Interest. In addition, ligands with molecular weight > 250 and outliers as shown on the validation Tables will also be included. For torsion angles, if less than 5% of the Mogul distribution of torsion angles is within 10 degrees of the torsion angle in question, then that torsion angle is considered an outlier. Any bond that is central to one or more torsion angles identified as an outlier by Mogul will be highlighted in the graph. For rings, the root-mean-square deviation (RMSD) between the ring in question and similar rings identified by Mogul is calculated over all ring torsion angles. If the average RMSD is greater than 60 degrees and the minimal RMSD between the ring in question and any Mogul-identified rings is also greater than 60 degrees, then that ring is considered an outlier. The outliers are highlighted in purple. The color gray indicates Mogul did not find sufficient equivalents in the CSD to analyse the geometry.

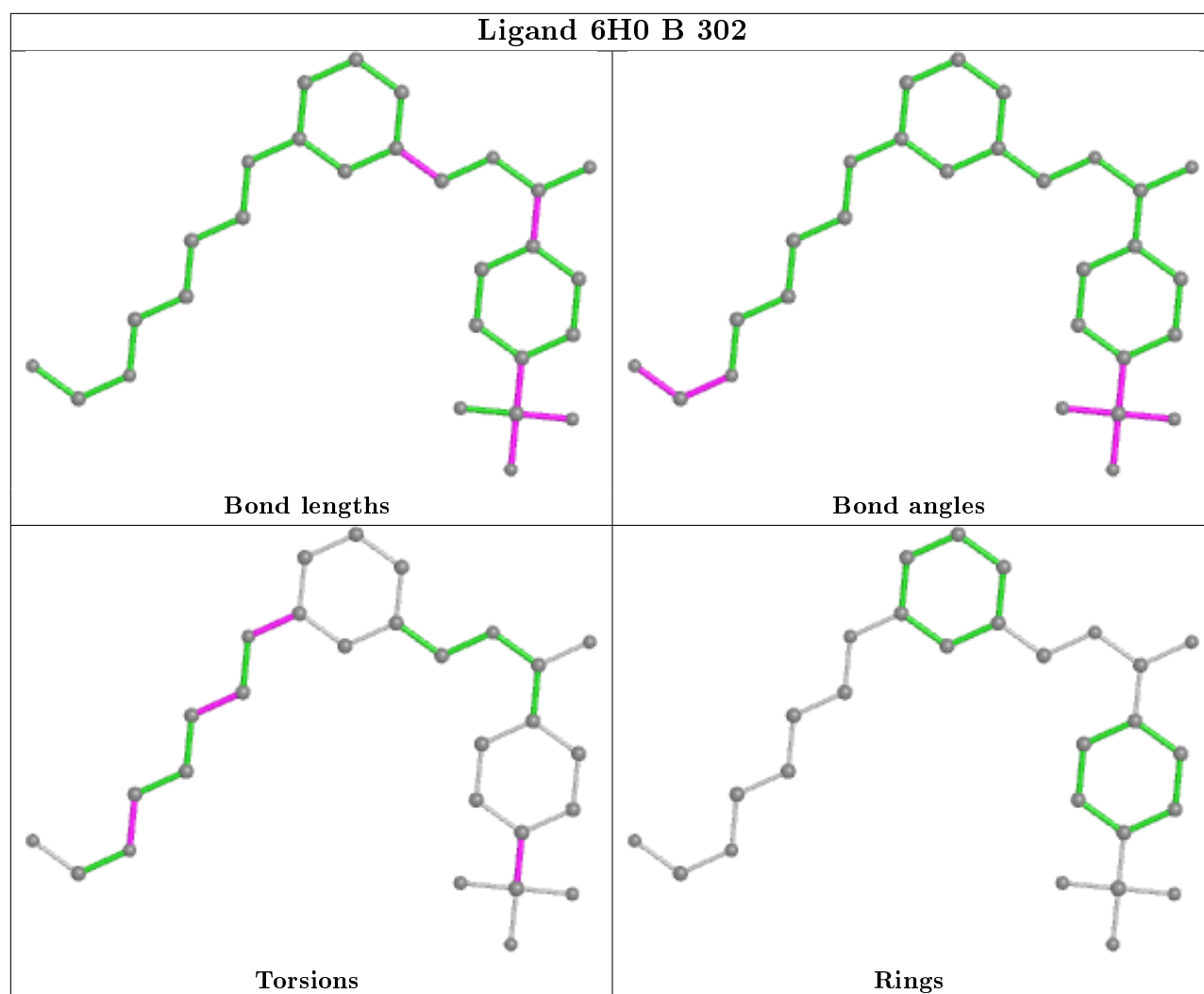


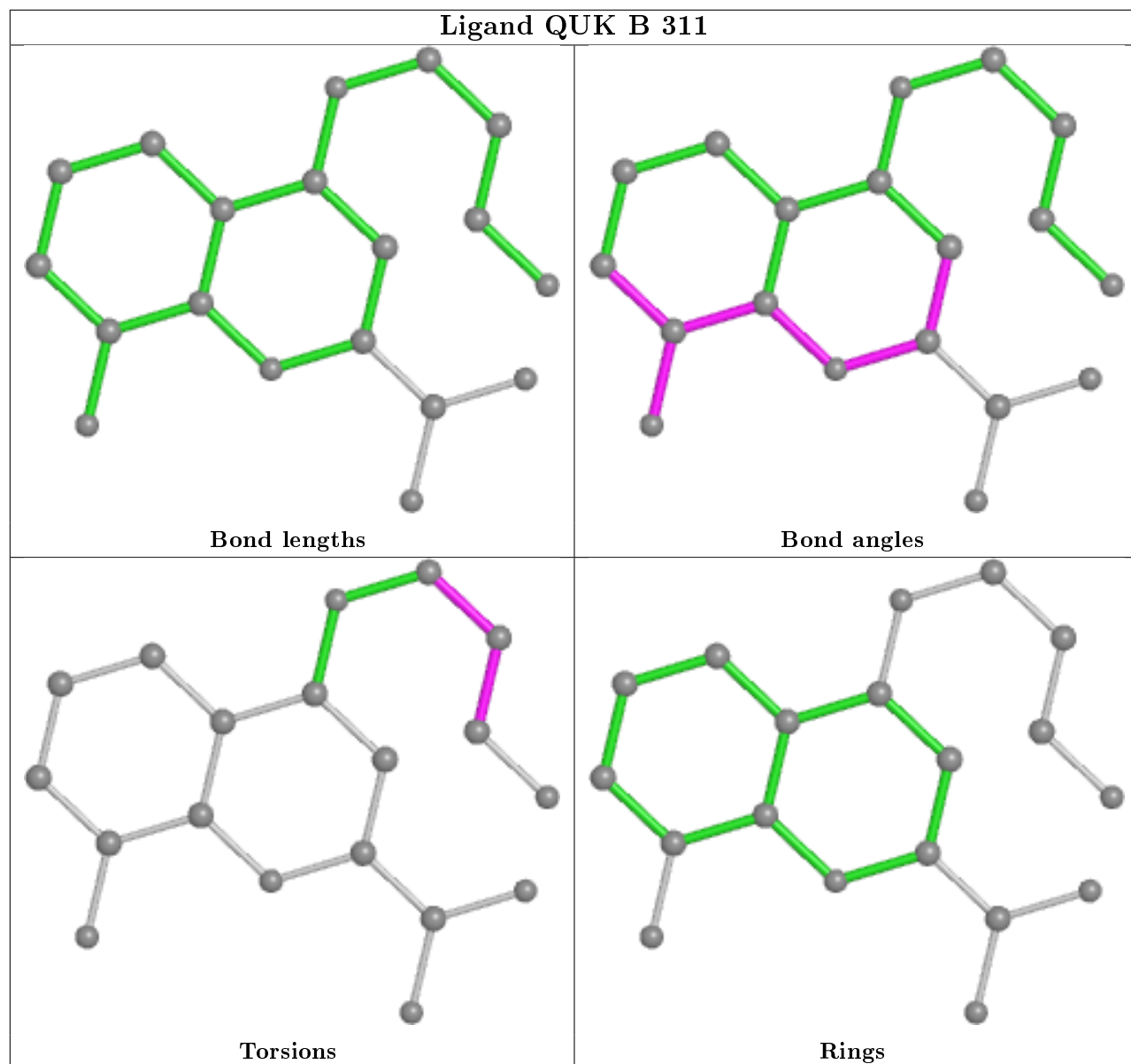




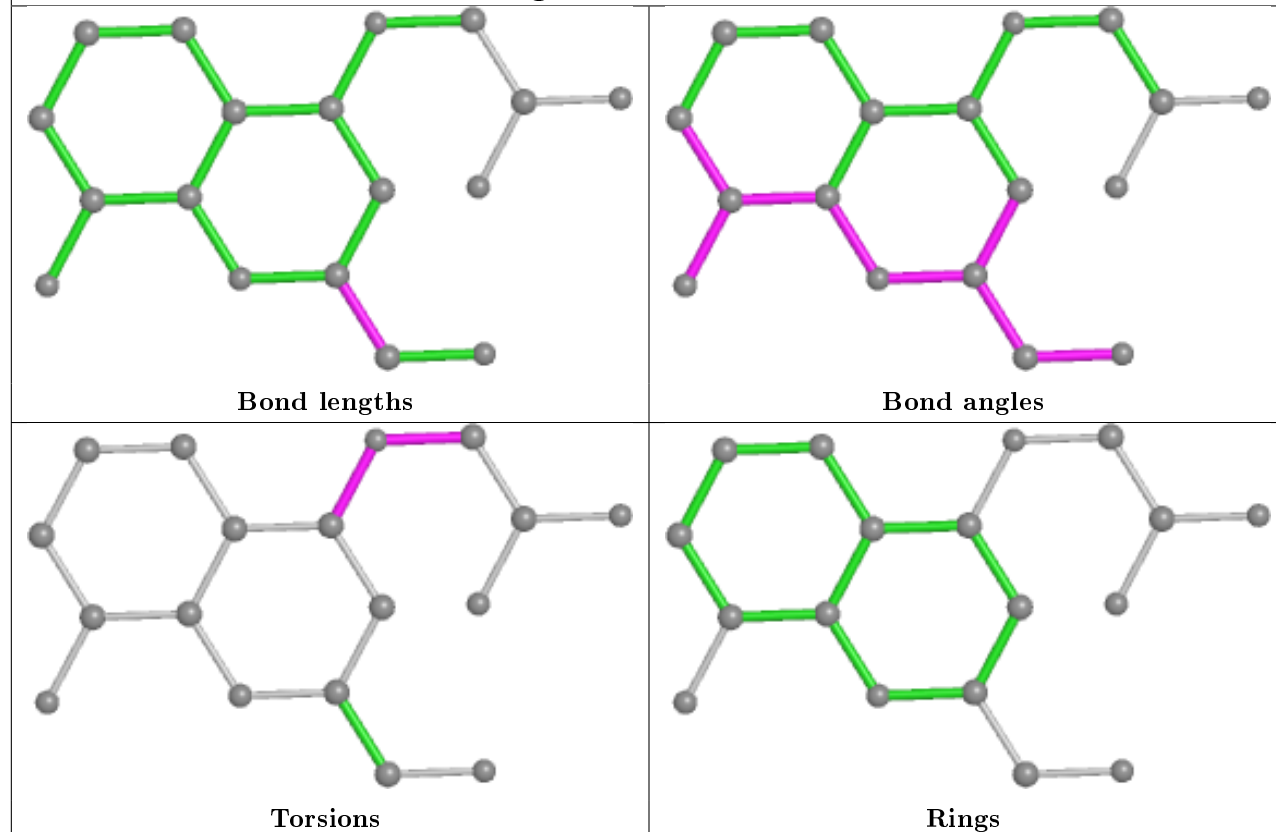




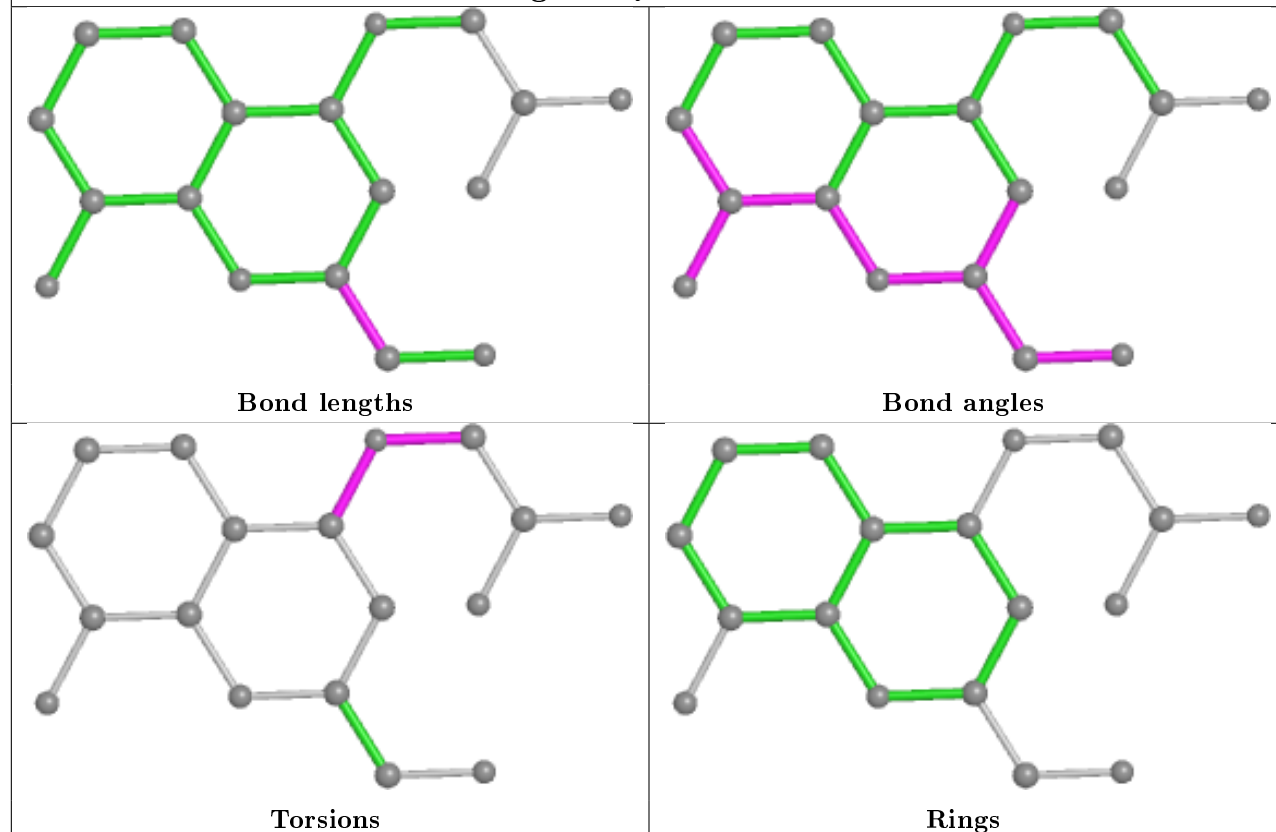




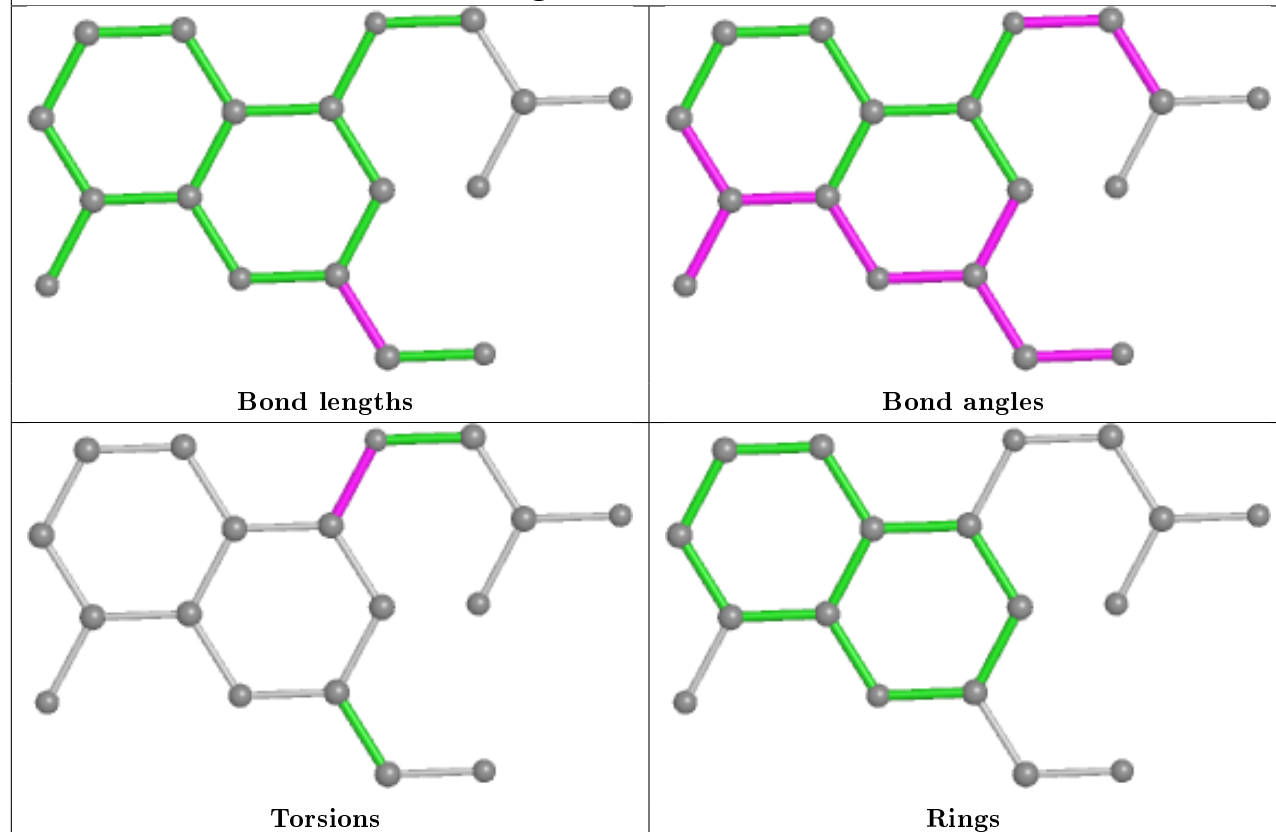
Ligand QVE A 305



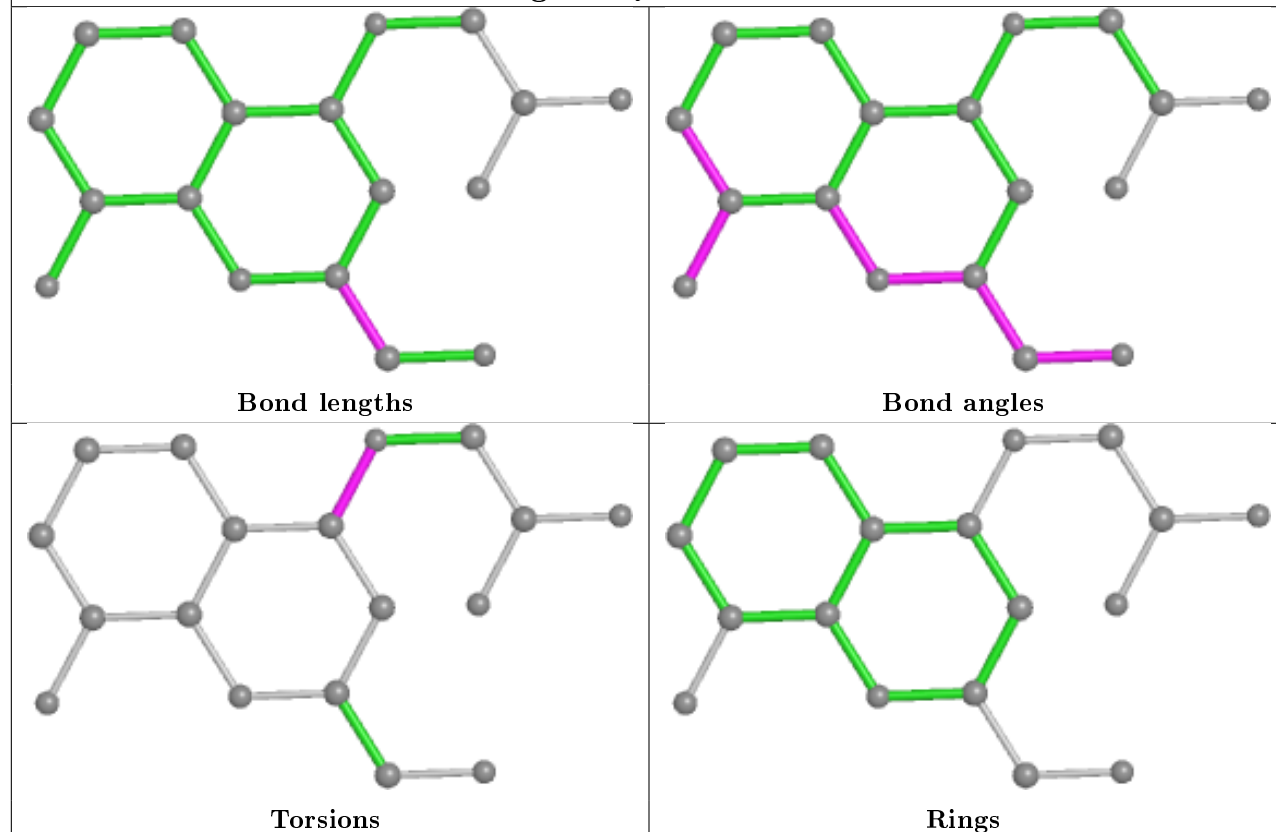
Ligand QVE A 320

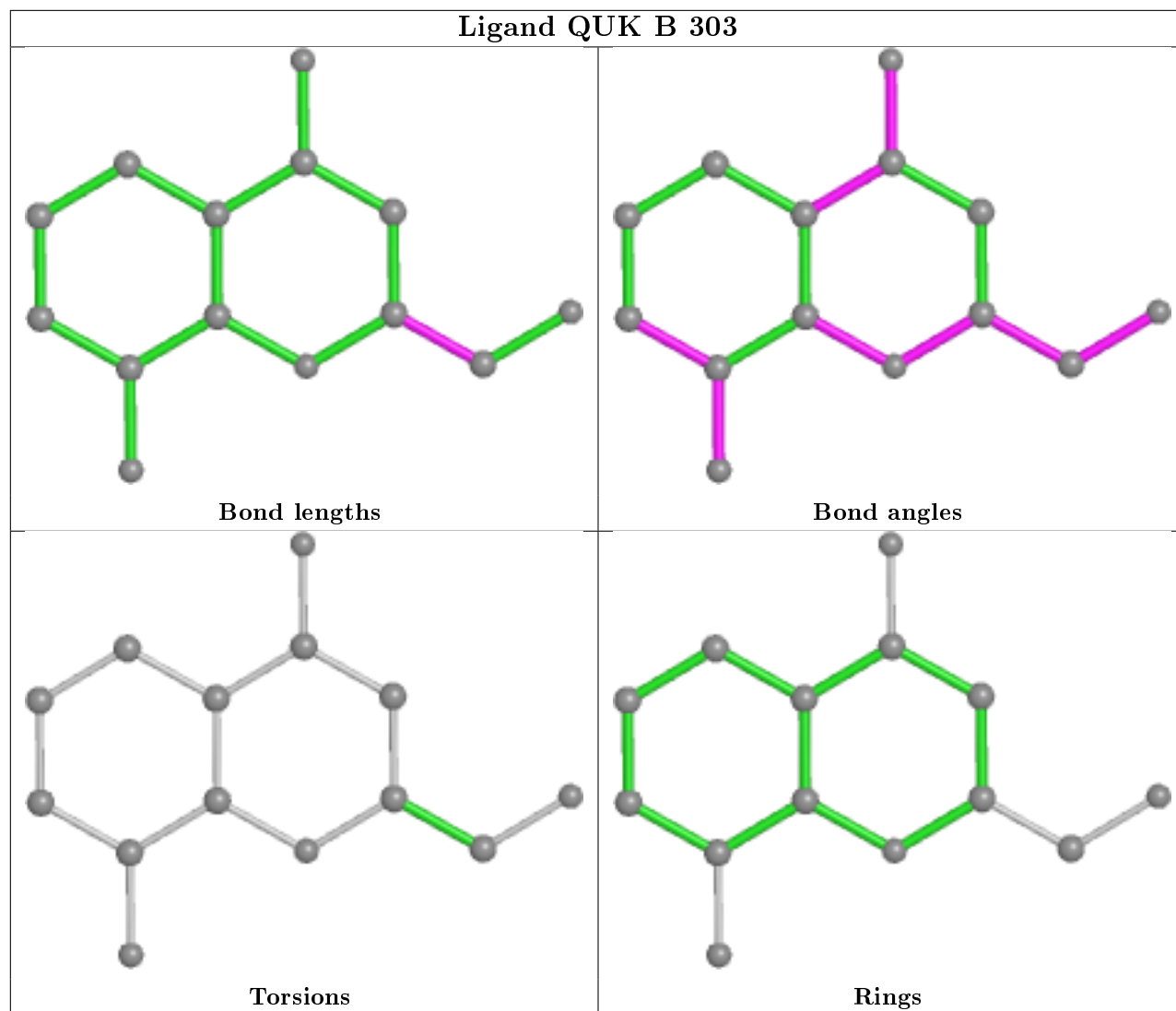


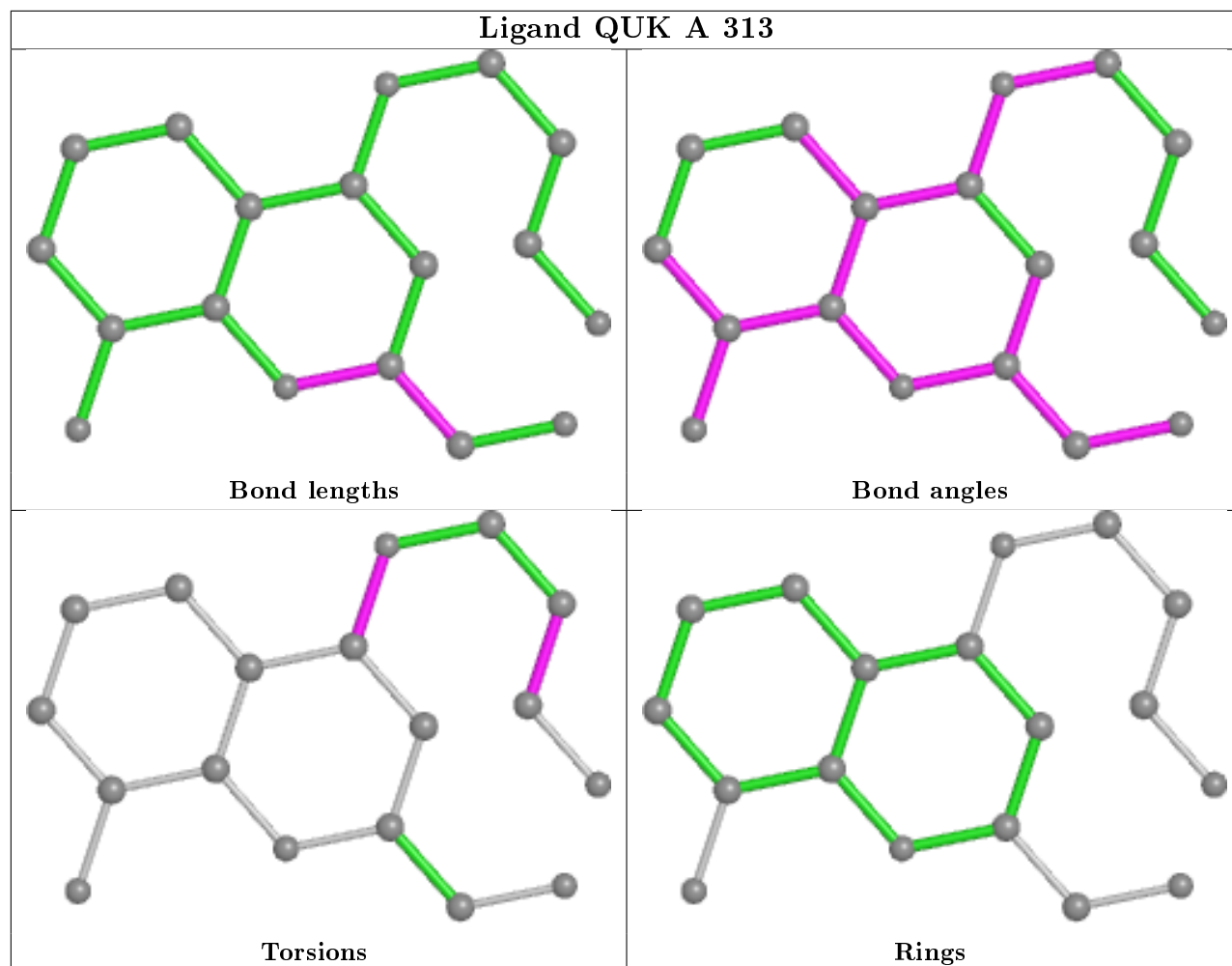
Ligand QVE A 310

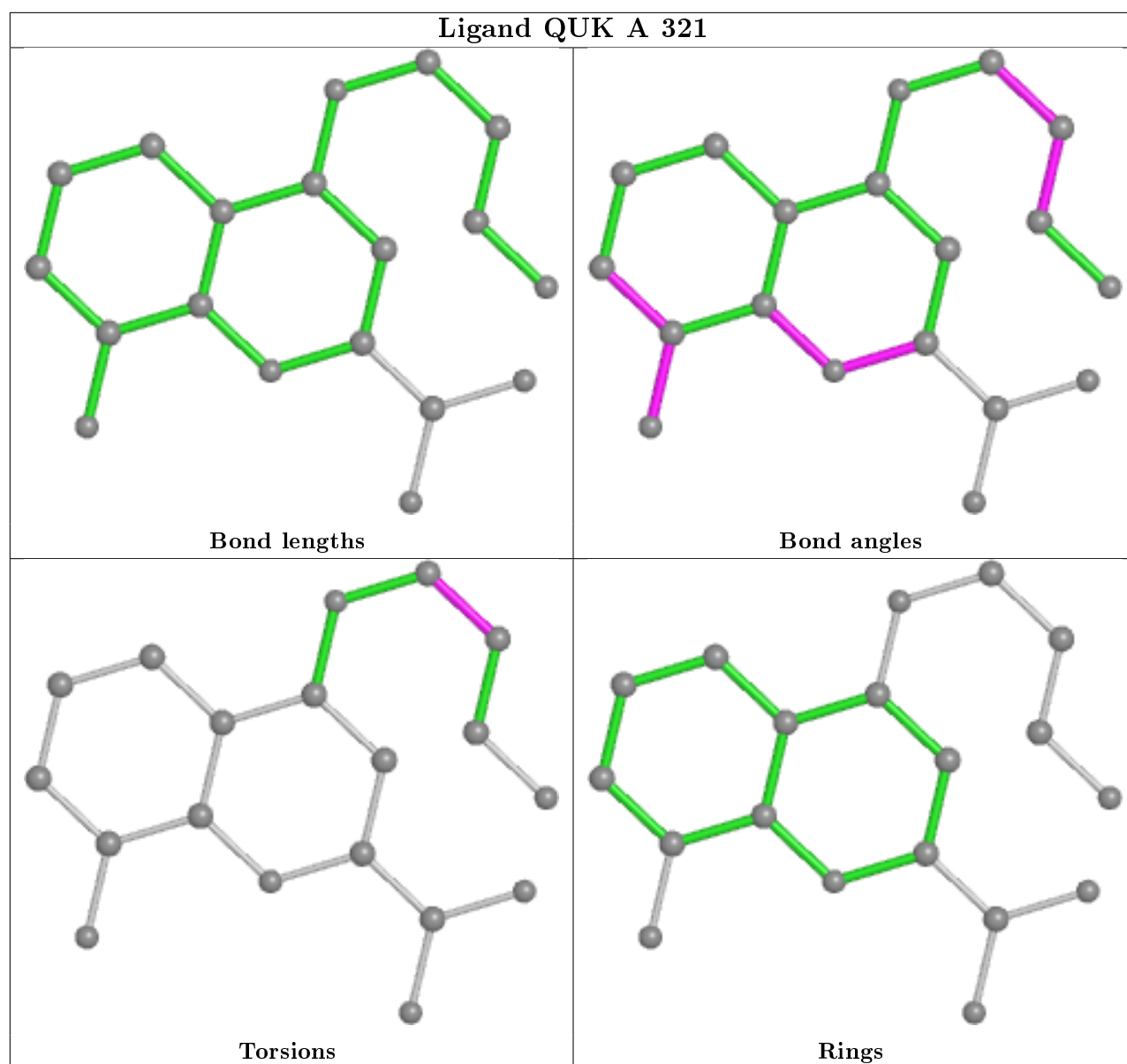


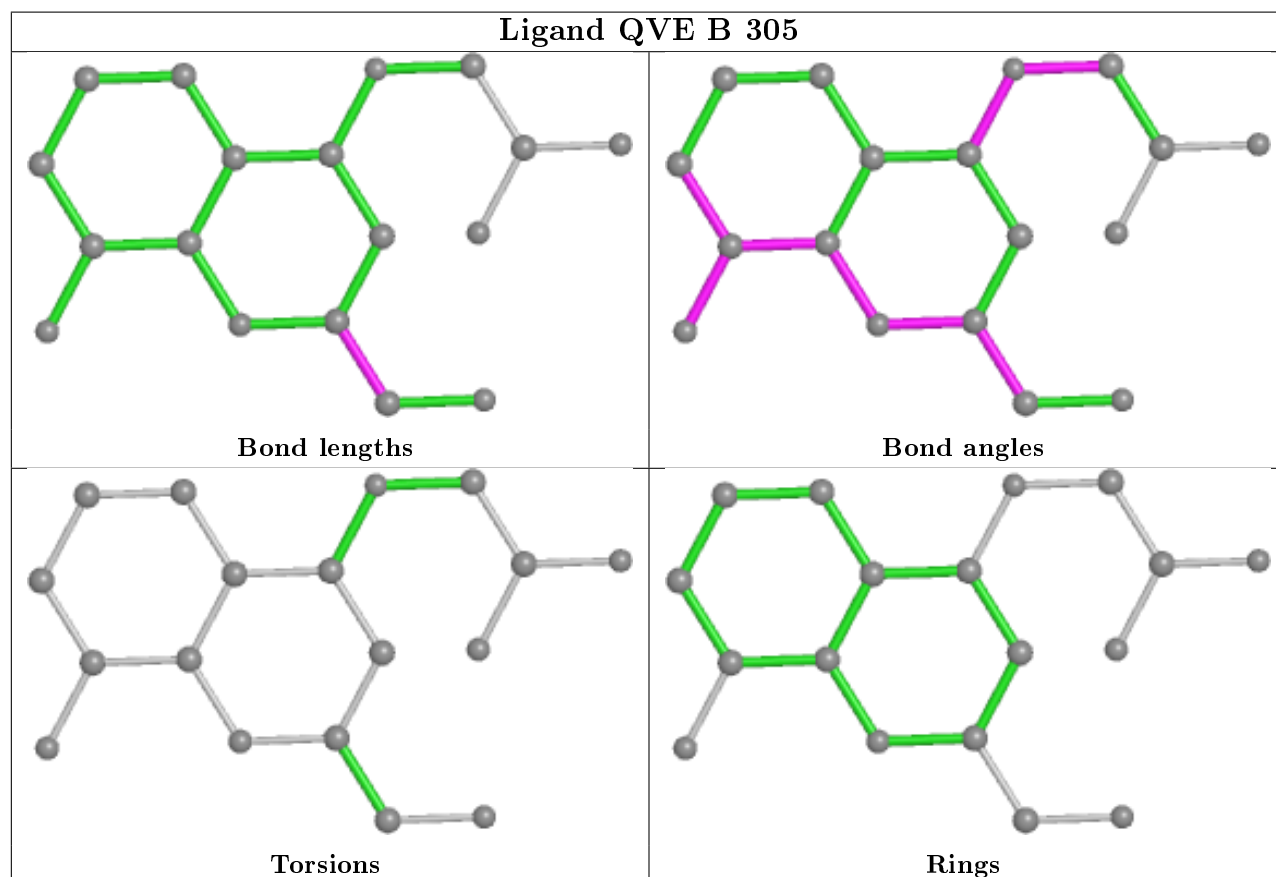
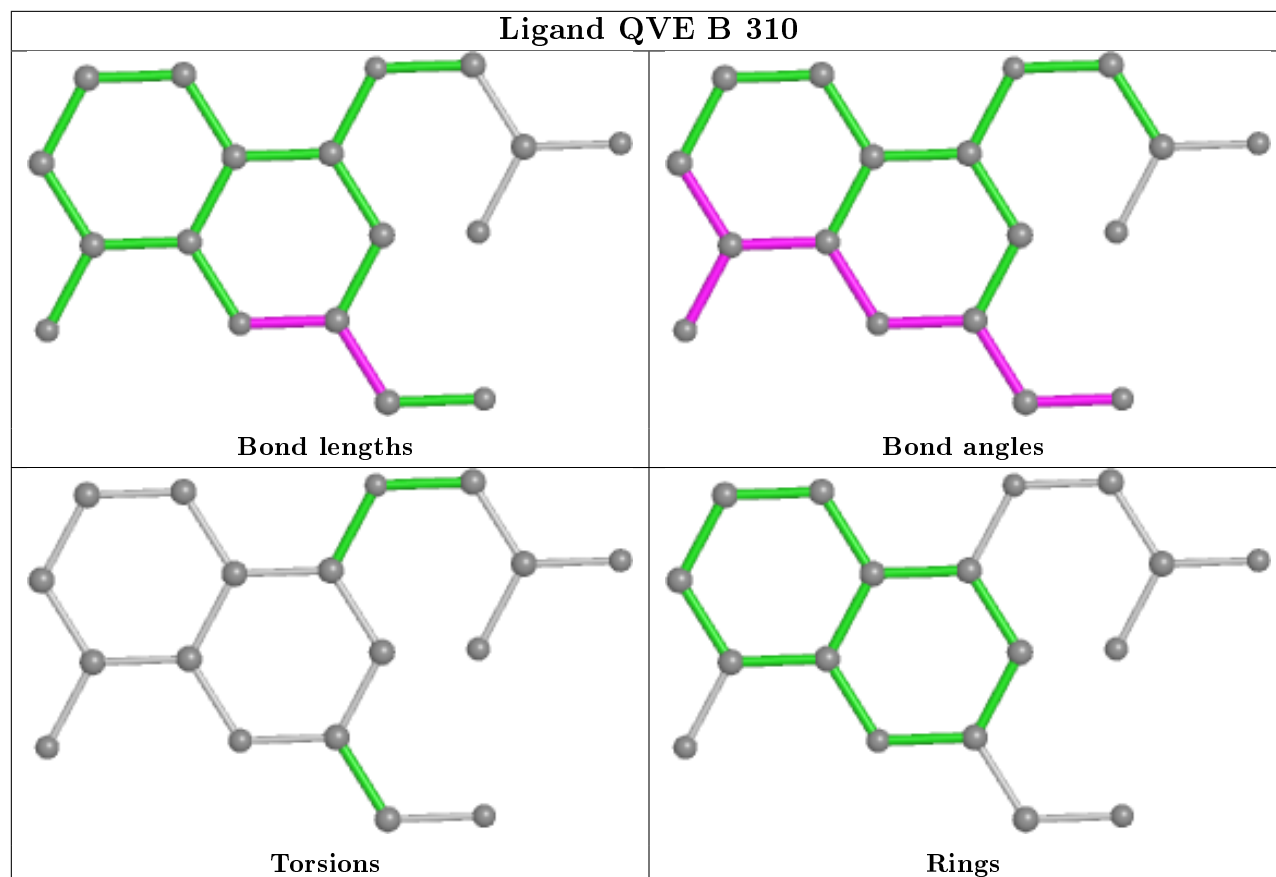
Ligand QVE A 315

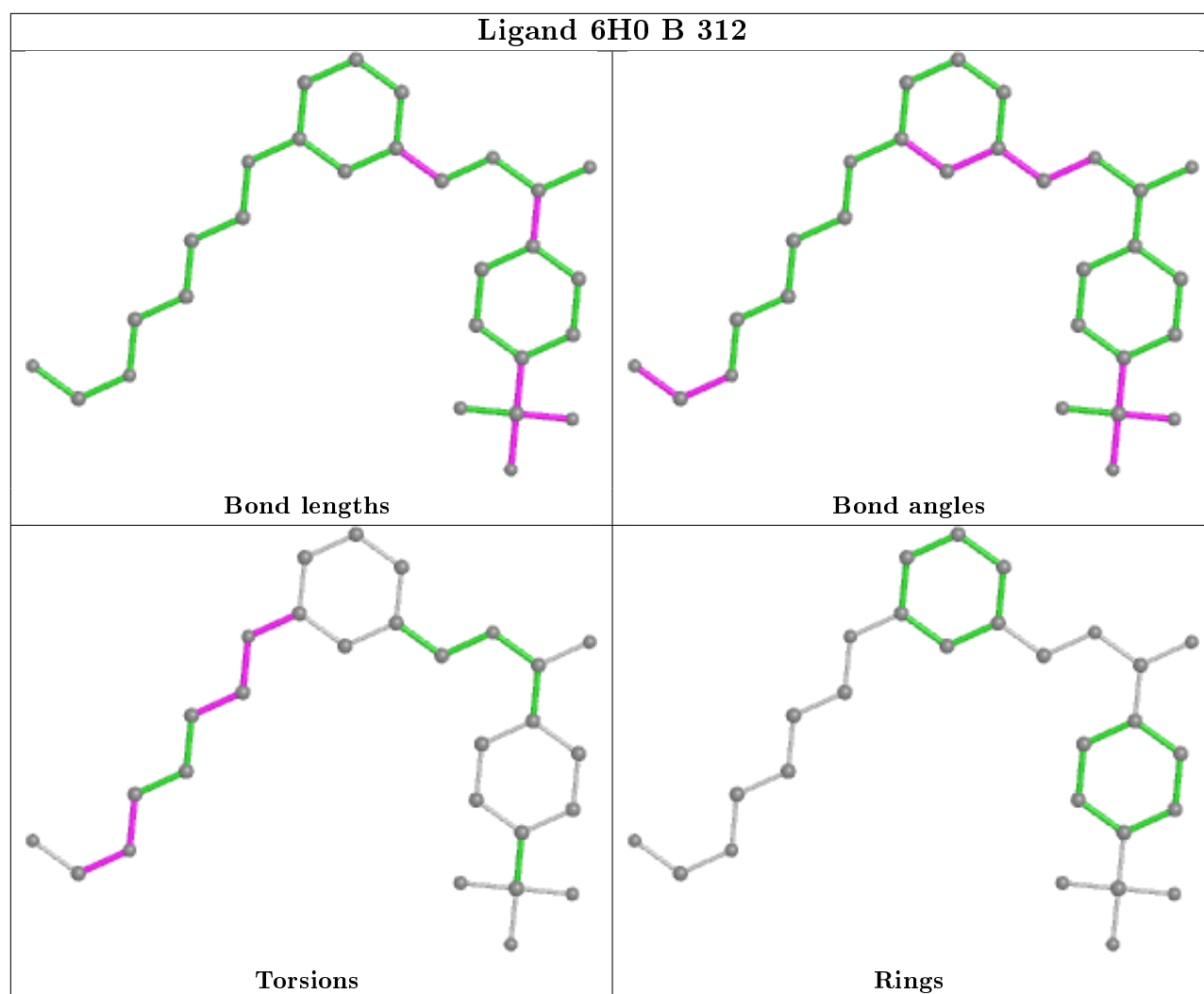


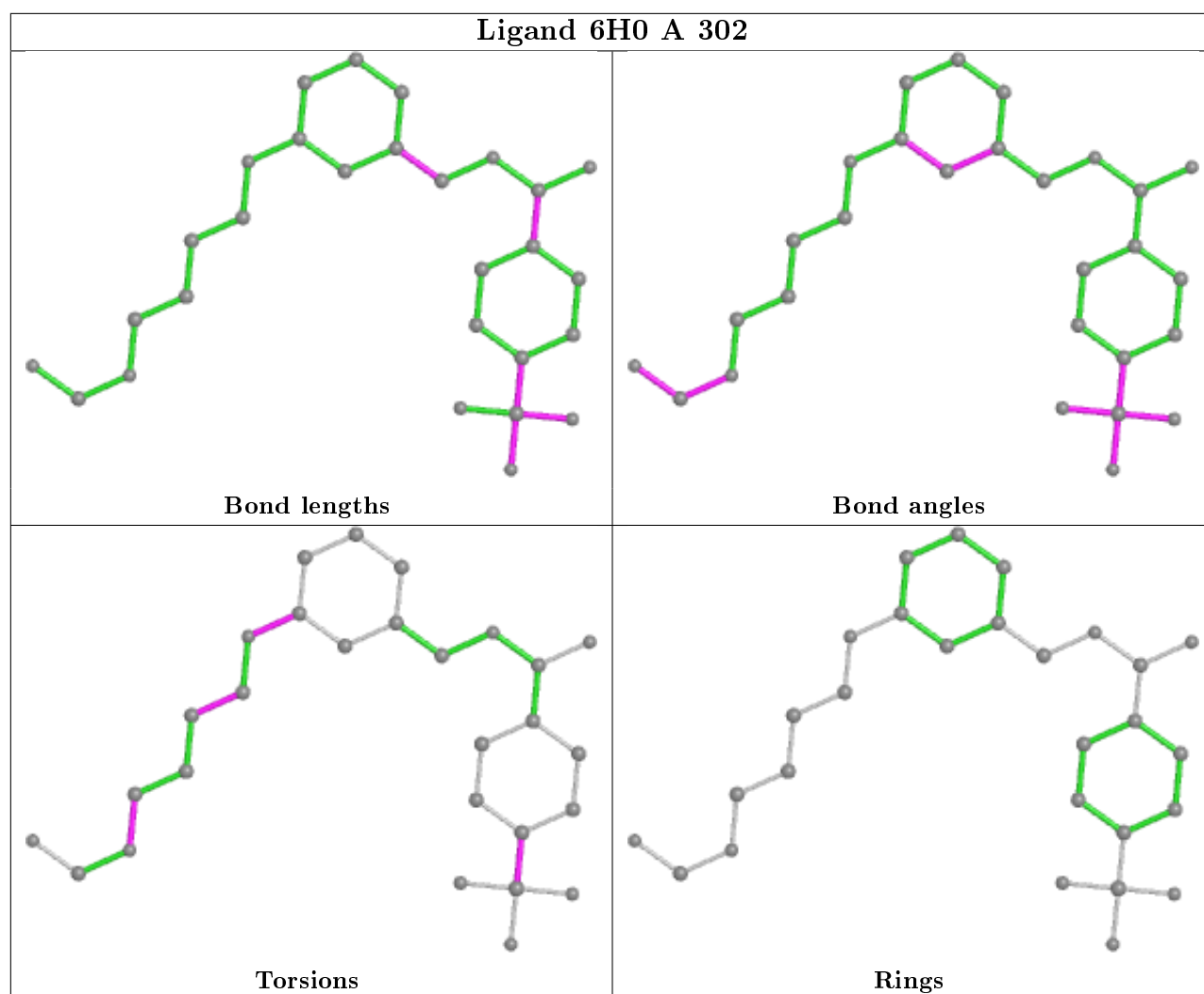


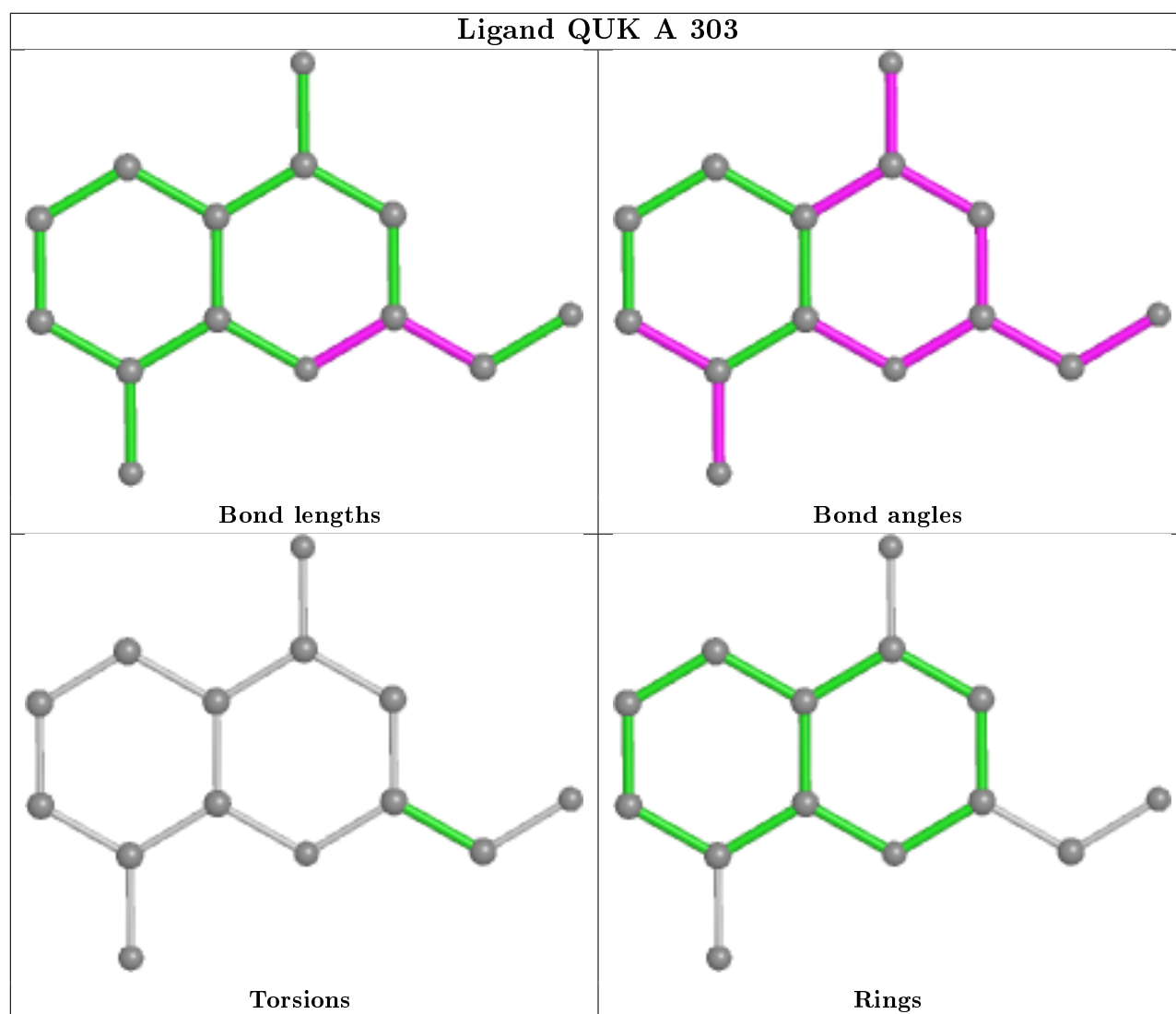












5.7 Other polymers [i](#)

There are no such residues in this entry.

5.8 Polymer linkage issues [i](#)

There are no chain breaks in this entry.

6 Fit of model and data [i](#)

6.1 Protein, DNA and RNA chains [i](#)

In the following table, the column labelled ‘#RSRZ> 2’ contains the number (and percentage) of RSRZ outliers, followed by percent RSRZ outliers for the chain as percentile scores relative to all X-ray entries and entries of similar resolution. The OWAB column contains the minimum, median, 95th percentile and maximum values of the occupancy-weighted average B-factor per residue. The column labelled ‘Q< 0.9’ lists the number of (and percentage) of residues with an average occupancy less than 0.9.

Mol	Chain	Analysed	<RSRZ>	#RSRZ>2	OWAB(Å ²)	Q<0.9
1	A	257/257 (100%)	0.30	9 (3%) 44 40	63, 89, 120, 145	0
1	B	257/257 (100%)	0.22	7 (2%) 54 51	66, 90, 113, 119	0
All	All	514/514 (100%)	0.26	16 (3%) 49 45	63, 89, 115, 145	0

The worst 5 of 16 RSRZ outliers are listed below:

Mol	Chain	Res	Type	RSRZ
1	A	33	ILE	3.0
1	B	162	VAL	2.9
1	B	70	PHE	2.9
1	A	191	TRP	2.8
1	B	183	LEU	2.7

6.2 Non-standard residues in protein, DNA, RNA chains [i](#)

There are no non-standard protein/DNA/RNA residues in this entry.

6.3 Carbohydrates [i](#)

There are no carbohydrates in this entry.

6.4 Ligands [i](#)

In the following table, the Atoms column lists the number of modelled atoms in the group and the number defined in the chemical component dictionary. The B-factors column lists the minimum, median, 95th percentile and maximum values of B factors of atoms in the group. The column labelled ‘Q< 0.9’ lists the number of atoms with occupancy less than 0.9.

Mol	Type	Chain	Res	Atoms	RSCC	RSR	B-factors(\AA^2)	Q<0.9
9	GOL	B	323	6/6	0.83	0.36	99,101,103,104	0
3	6H0	A	312	28/28	0.91	0.20	72,80,97,99	0
8	QDD	A	308	17/17	0.91	0.22	79,84,102,103	0
6	QVE	A	320	18/19	0.91	0.22	73,80,99,102	0
9	GOL	A	323	6/6	0.91	0.27	85,87,88,89	0
6	QVE	B	305	18/19	0.91	0.18	69,73,91,94	0
7	QVS	A	306	14/15	0.92	0.17	75,79,81,81	0
3	6H0	B	312	28/28	0.92	0.24	76,85,96,99	0
4	QUK	A	313	18/19	0.93	0.24	75,79,99,99	0
6	QVE	A	305	18/19	0.93	0.23	73,78,99,99	0
8	QDD	B	308	17/17	0.93	0.21	73,77,90,90	0
6	QVE	A	310	18/19	0.94	0.17	78,84,94,96	0
8	QDD	A	318	17/17	0.94	0.20	71,75,86,86	0
4	QUK	B	313	18/19	0.94	0.22	76,80,97,98	0
4	QUK	B	311	19/19	0.94	0.18	80,82,96,97	0
5	ZY9	A	319	10/11	0.94	0.19	71,73,75,75	0
4	QUK	A	303	14/19	0.94	0.18	74,78,81,83	0
9	GOL	B	322	6/6	0.95	0.38	80,82,83,83	0
6	QVE	B	310	18/19	0.95	0.15	71,77,86,88	0
6	QVE	A	315	18/19	0.95	0.20	68,73,87,87	0
4	QUK	A	311	19/19	0.95	0.16	84,86,99,100	0
6	QVE	B	320	18/19	0.95	0.18	76,81,90,92	0
4	QUK	B	303	14/19	0.96	0.15	70,72,75,75	0
7	QVS	B	306	14/15	0.96	0.17	68,70,73,73	0
5	ZY9	A	309	10/11	0.96	0.18	77,79,79,79	0
4	QUK	A	321	19/19	0.96	0.20	76,81,95,99	0
5	ZY9	B	317	10/11	0.96	0.21	73,74,74,75	0
8	QDD	B	318	17/17	0.96	0.19	74,75,83,84	0
5	ZY9	A	314	10/11	0.96	0.23	67,71,75,76	0
7	QVS	A	316	14/15	0.96	0.17	73,75,80,80	0
6	QVE	B	315	18/19	0.96	0.21	70,74,86,86	0
4	QUK	B	321	19/19	0.96	0.21	80,83,91,94	0
5	ZY9	B	304	10/11	0.97	0.21	69,70,72,72	0
7	QVS	B	316	14/15	0.97	0.14	74,75,77,78	0
5	ZY9	B	319	10/11	0.97	0.21	76,78,78,79	0
5	ZY9	B	309	10/11	0.97	0.18	70,71,72,73	0
3	6H0	A	302	28/28	0.97	0.22	66,68,71,72	0
5	ZY9	A	304	10/11	0.97	0.18	75,77,77,78	0
5	ZY9	A	307	10/11	0.98	0.19	73,74,77,78	0
5	ZY9	B	307	10/11	0.98	0.18	68,70,70,71	0
9	GOL	A	322	6/6	0.98	0.20	69,70,72,73	0
3	6H0	B	302	28/28	0.98	0.23	70,73,76,77	0
5	ZY9	A	317	10/11	0.98	0.16	65,67,69,70	0

Continued on next page...

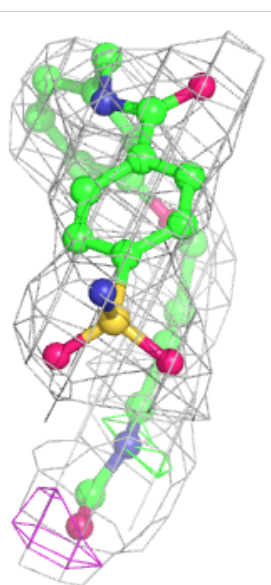
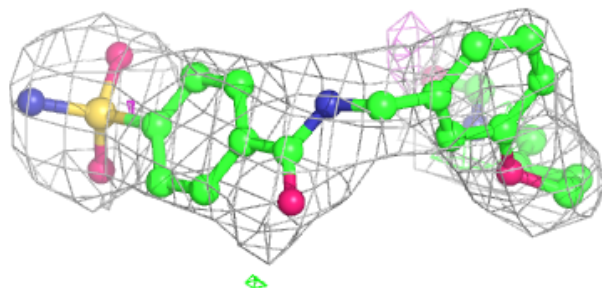
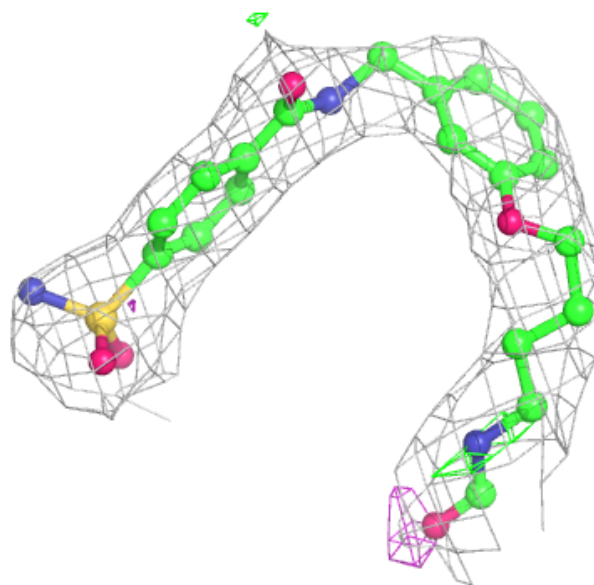
Continued from previous page...

Mol	Type	Chain	Res	Atoms	RSCC	RSR	B-factors(\AA^2)	Q<0.9
5	ZY9	B	314	10/11	0.99	0.19	71,73,75,75	0
2	ZN	B	301	1/1	1.00	0.20	69,69,69,69	0
2	ZN	A	301	1/1	1.00	0.19	65,65,65,65	0

The following is a graphical depiction of the model fit to experimental electron density of all instances of the Ligand of Interest. In addition, ligands with molecular weight > 250 and outliers as shown on the geometry validation Tables will also be included. Each fit is shown from different orientation to approximate a three-dimensional view.

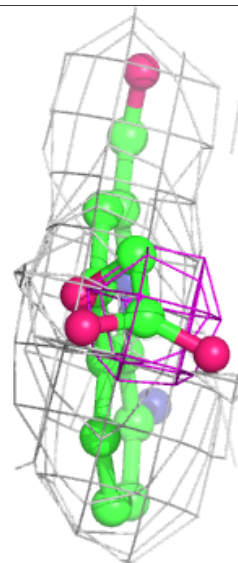
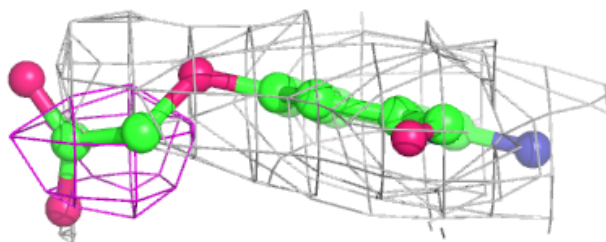
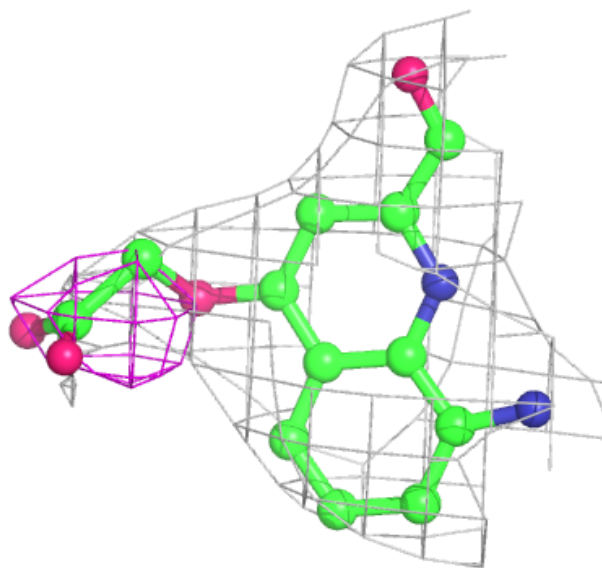
Electron density around 6H0 A 312:

2mF_o-DF_c (at 0.7 rmsd) in gray
mF_o-DF_c (at 3 rmsd) in purple (negative)
and green (positive)



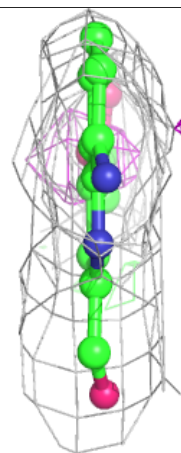
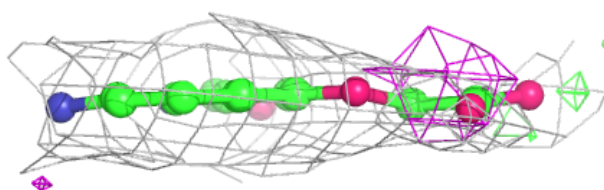
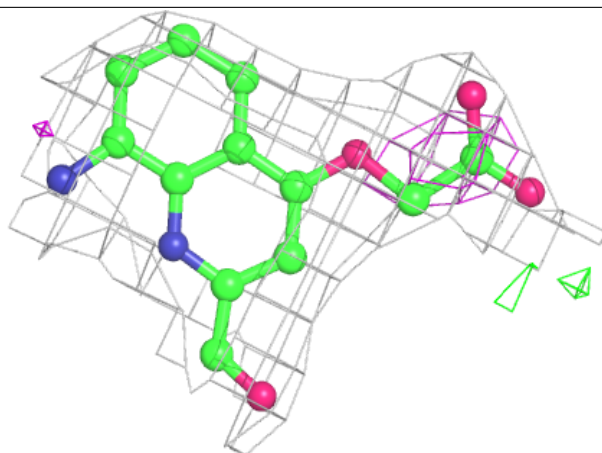
Electron density around QVE A 320:

$2mF_o-DF_c$ (at 0.7 rmsd) in gray
 mF_o-DF_c (at 3 rmsd) in purple (negative)
and green (positive)



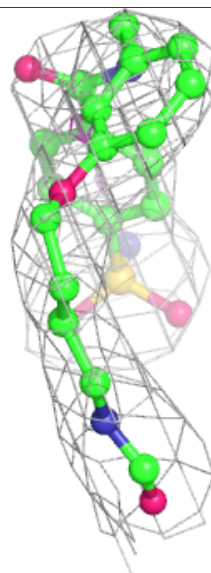
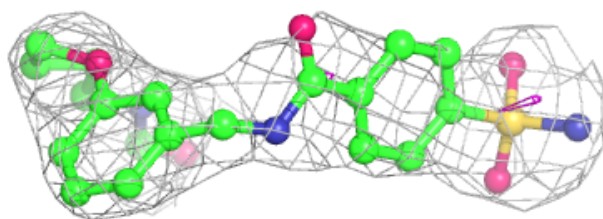
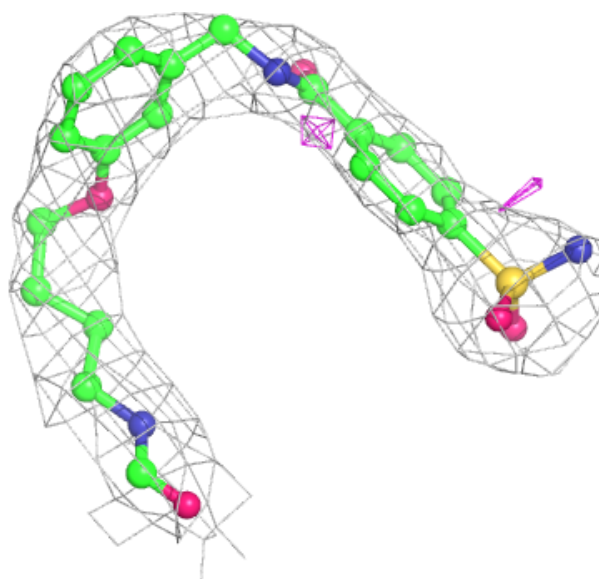
Electron density around QVE B 305:

$2mF_o - DF_c$ (at 0.7 rmsd) in gray
 $mF_o - DF_c$ (at 3 rmsd) in purple (negative)
and green (positive)



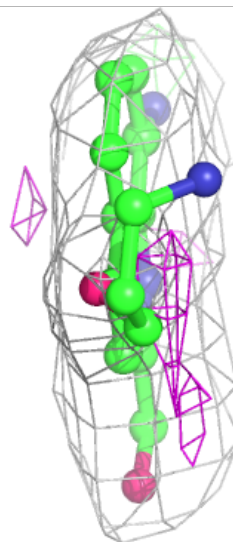
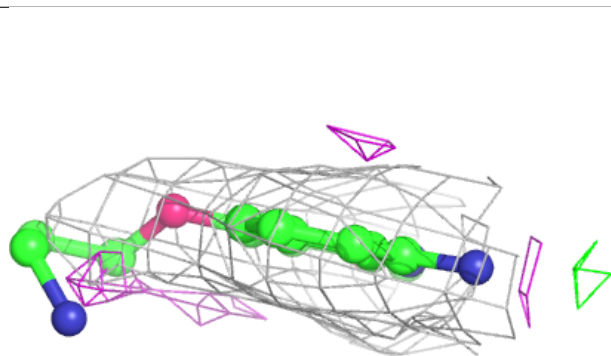
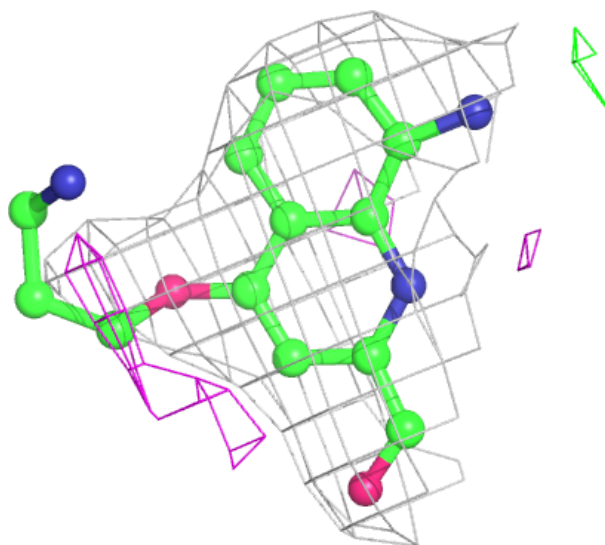
Electron density around 6H0 B 312:

$2mF_o-DF_c$ (at 0.7 rmsd) in gray
 mF_o-DF_c (at 3 rmsd) in purple (negative)
and green (positive)



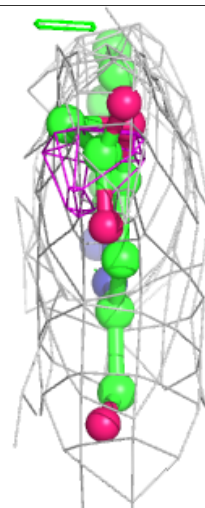
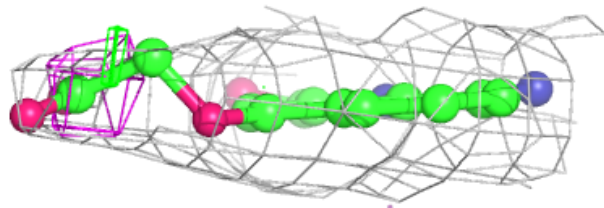
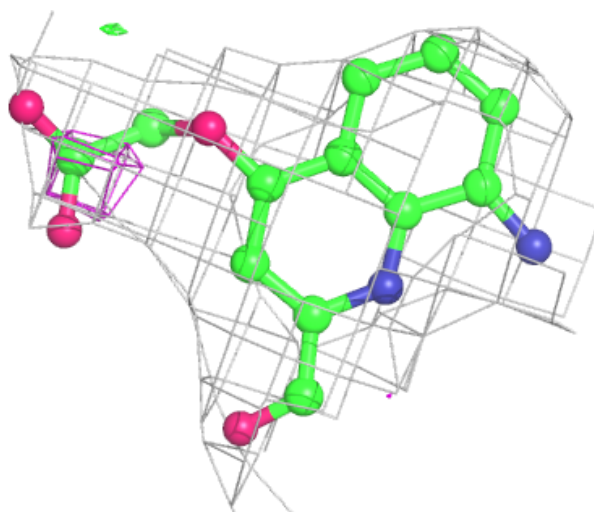
Electron density around QUK A 313:

$2mF_o-DF_c$ (at 0.7 rmsd) in gray
 mF_o-DF_c (at 3 rmsd) in purple (negative)
and green (positive)



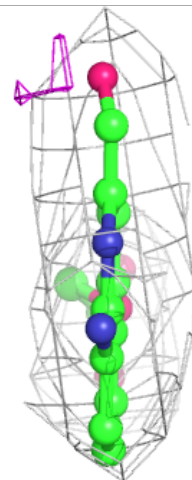
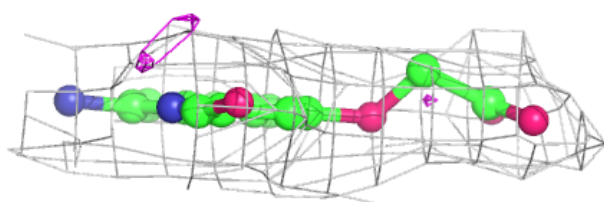
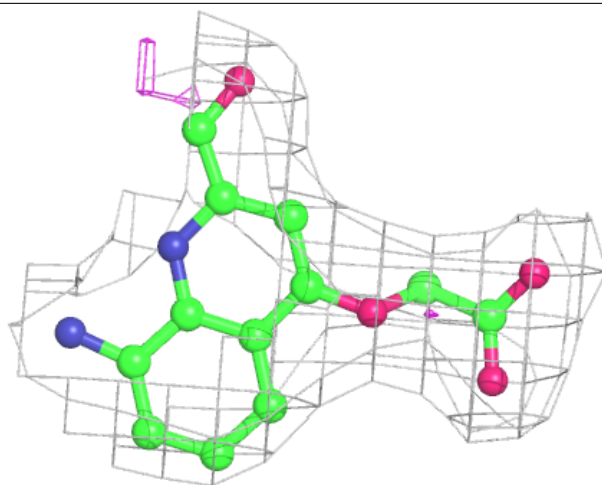
Electron density around QVE A 305:

$2mF_o-DF_c$ (at 0.7 rmsd) in gray
 mF_o-DF_c (at 3 rmsd) in purple (negative)
and green (positive)



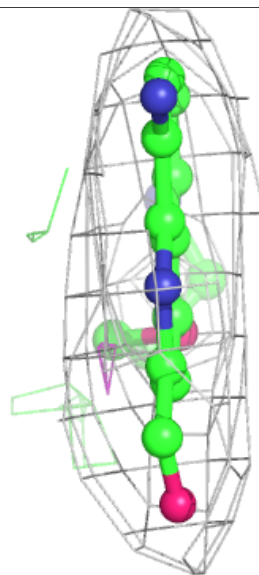
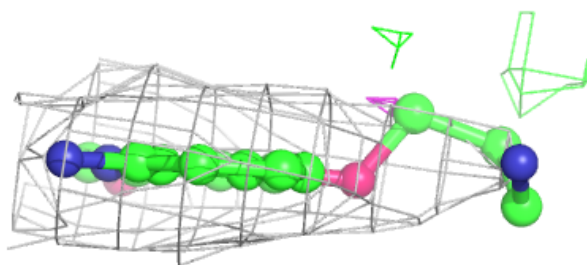
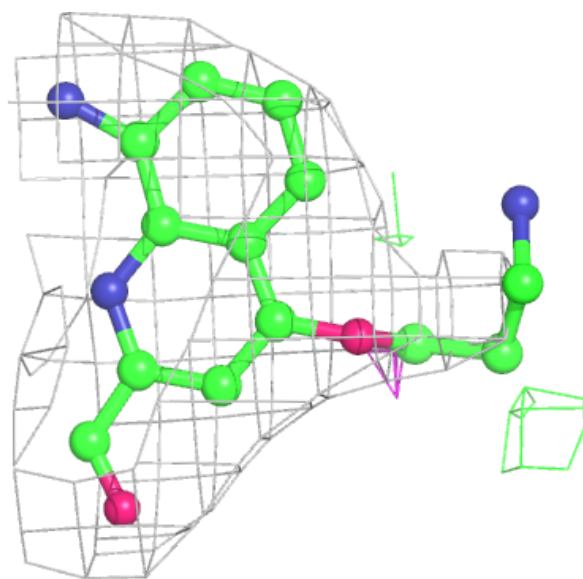
Electron density around QVE A 310:

$2mF_o-DF_c$ (at 0.7 rmsd) in gray
 mF_o-DF_c (at 3 rmsd) in purple (negative)
and green (positive)



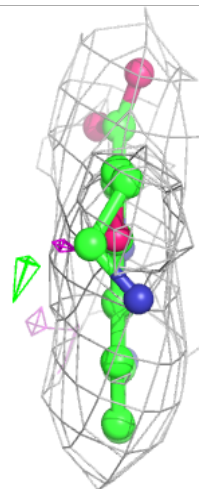
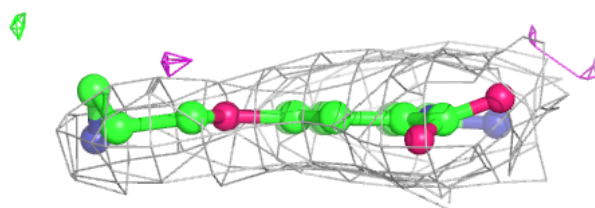
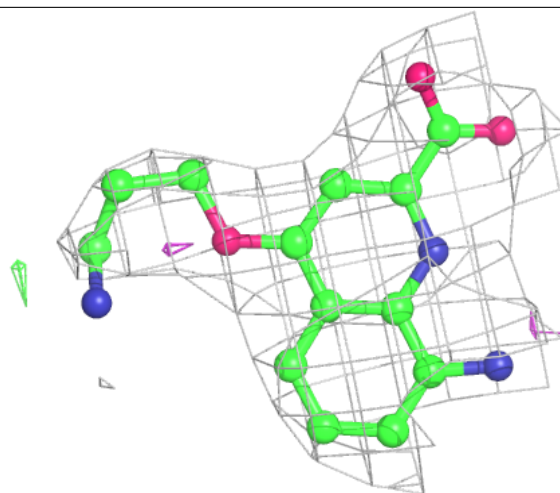
Electron density around QUK B 313:

$2mF_o-DF_c$ (at 0.7 rmsd) in gray
 mF_o-DF_c (at 3 rmsd) in purple (negative)
and green (positive)



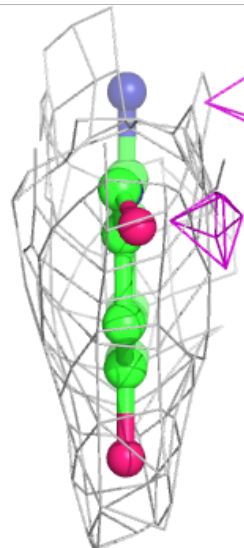
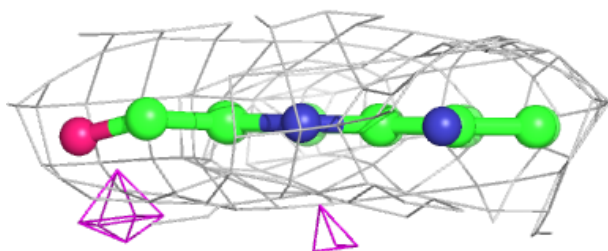
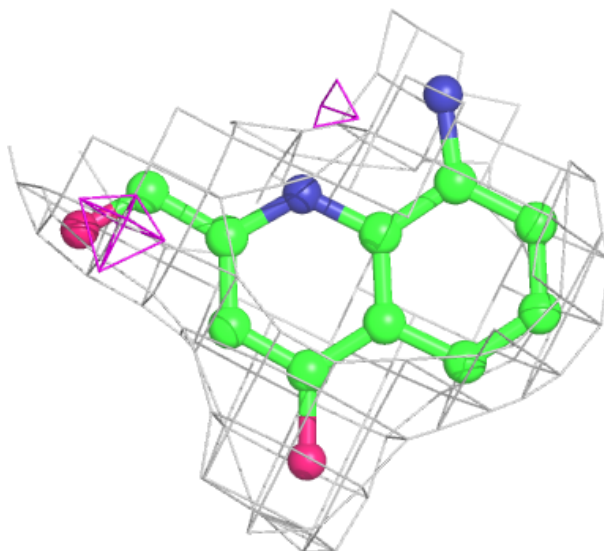
Electron density around QUK B 311:

$2mF_o-DF_c$ (at 0.7 rmsd) in gray
 mF_o-DF_c (at 3 rmsd) in purple (negative)
and green (positive)



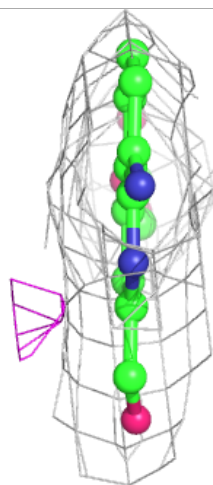
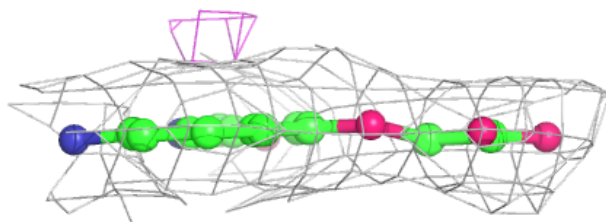
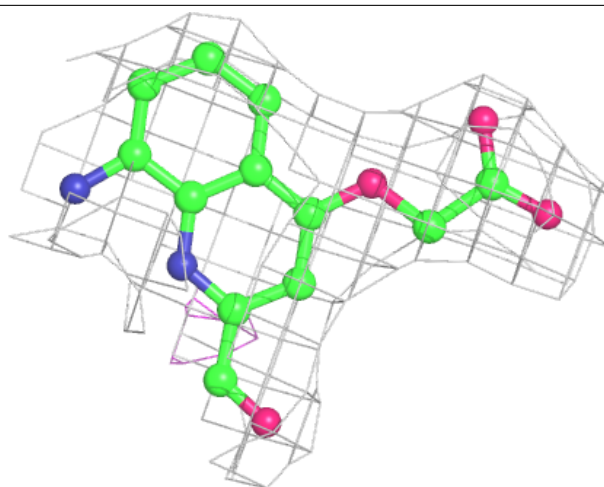
Electron density around QUK A 303:

$2mF_o-DF_c$ (at 0.7 rmsd) in gray
 mF_o-DF_c (at 3 rmsd) in purple (negative)
and green (positive)



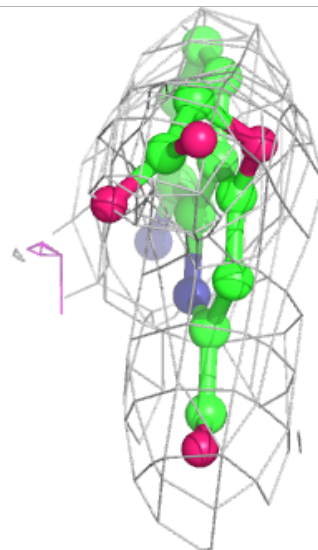
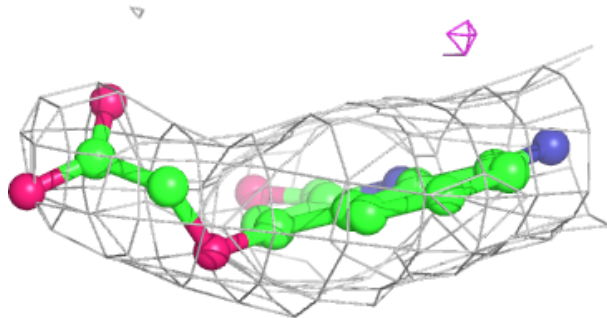
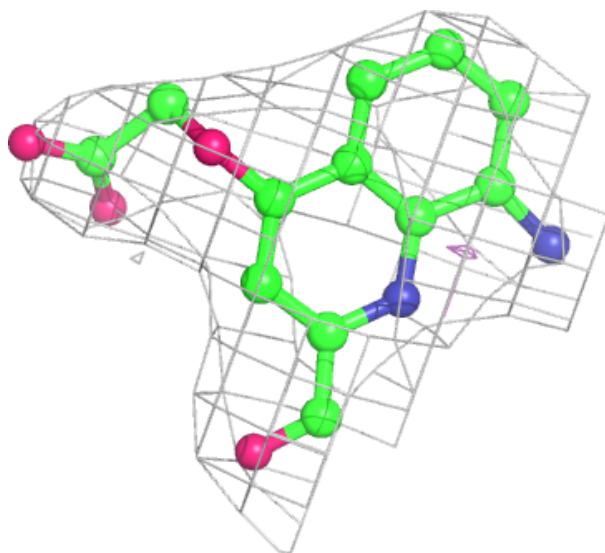
Electron density around QVE B 310:

$2mF_o-DF_c$ (at 0.7 rmsd) in gray
 mF_o-DF_c (at 3 rmsd) in purple (negative)
and green (positive)



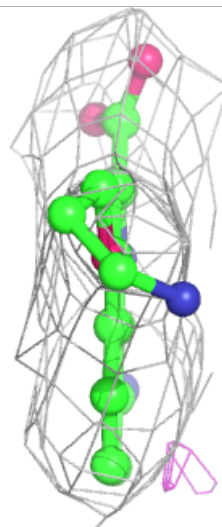
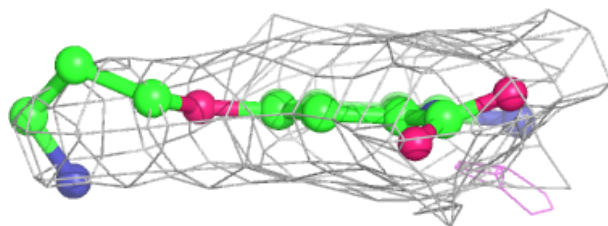
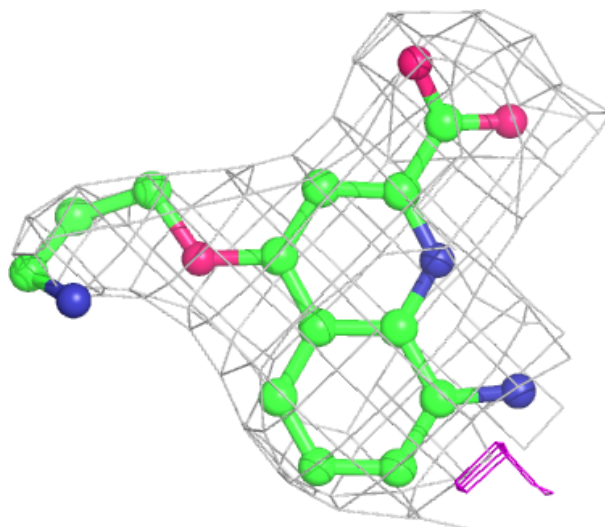
Electron density around QVE A 315:

$2mF_o-DF_c$ (at 0.7 rmsd) in gray
 mF_o-DF_c (at 3 rmsd) in purple (negative)
and green (positive)



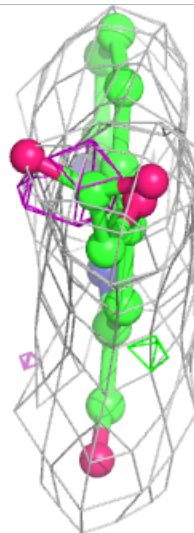
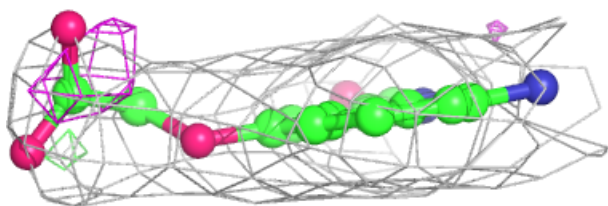
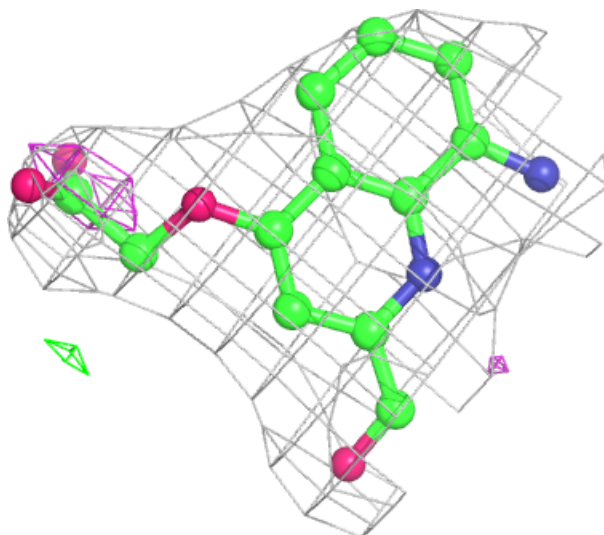
Electron density around QUK A 311:

$2mF_o-DF_c$ (at 0.7 rmsd) in gray
 mF_o-DF_c (at 3 rmsd) in purple (negative)
and green (positive)



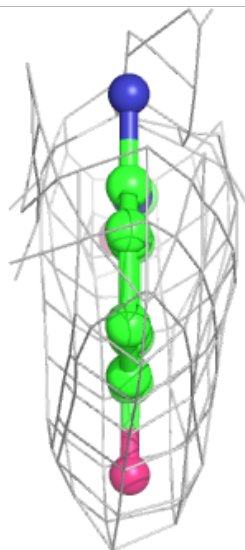
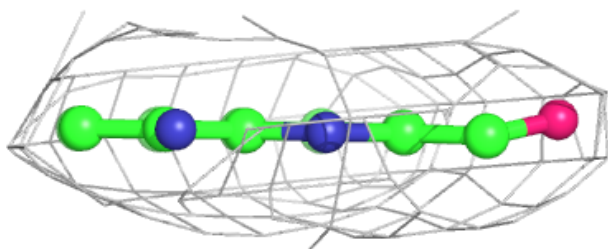
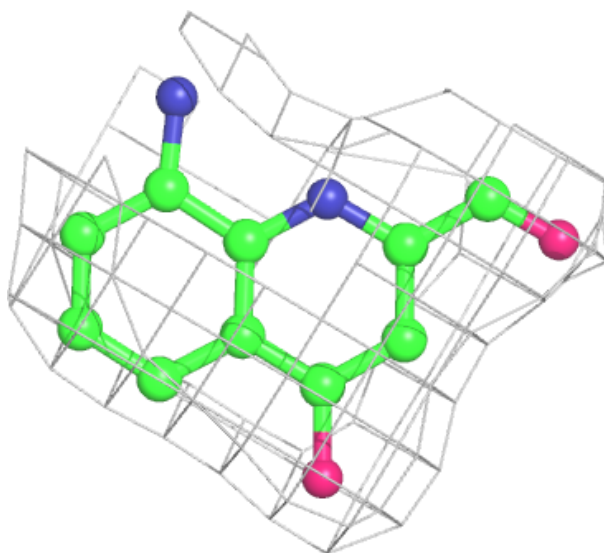
Electron density around QVE B 320:

$2mF_o-DF_c$ (at 0.7 rmsd) in gray
 mF_o-DF_c (at 3 rmsd) in purple (negative)
and green (positive)



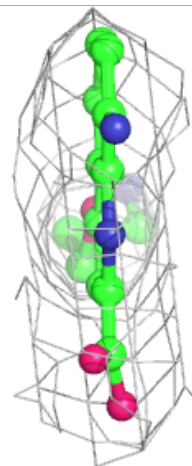
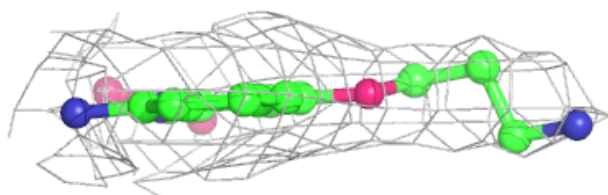
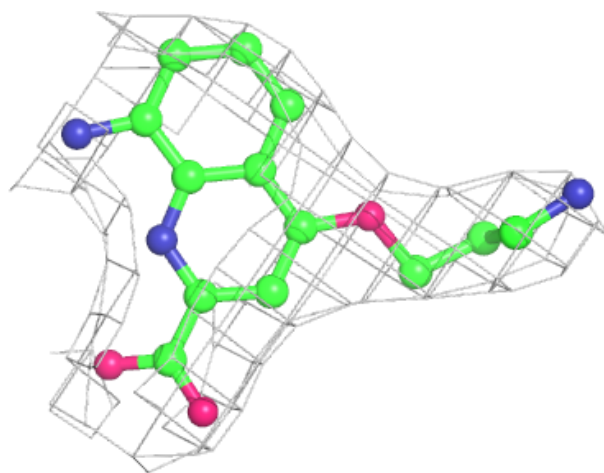
Electron density around QUK B 303:

$2mF_o-DF_c$ (at 0.7 rmsd) in gray
 mF_o-DF_c (at 3 rmsd) in purple (negative)
and green (positive)



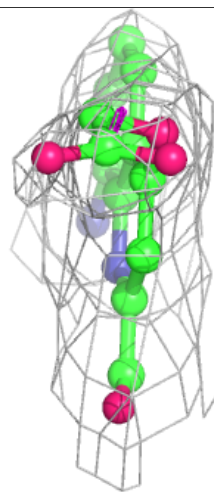
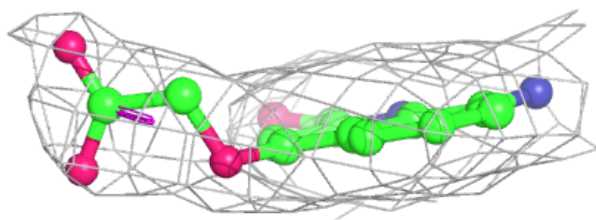
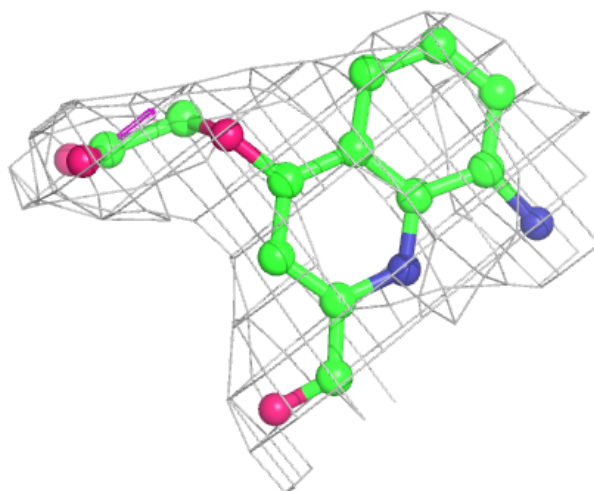
Electron density around QUK A 321:

$2mF_o-DF_c$ (at 0.7 rmsd) in gray
 mF_o-DF_c (at 3 rmsd) in purple (negative)
and green (positive)



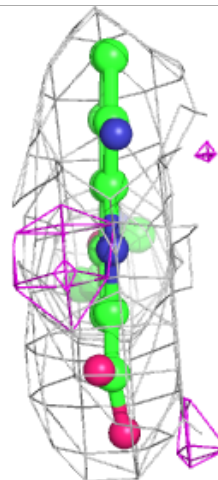
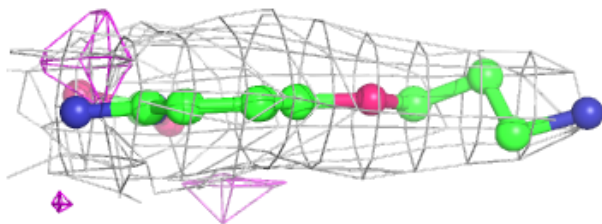
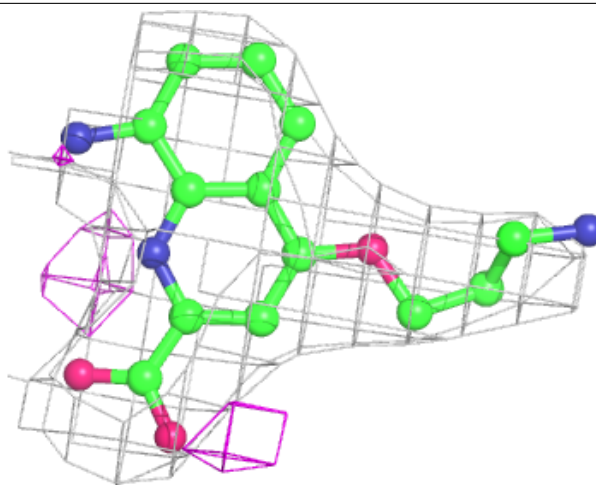
Electron density around QVE B 315:

$2mF_o-DF_c$ (at 0.7 rmsd) in gray
 mF_o-DF_c (at 3 rmsd) in purple (negative)
and green (positive)



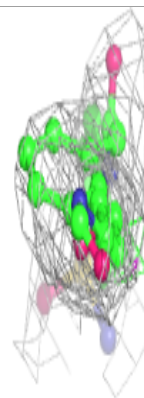
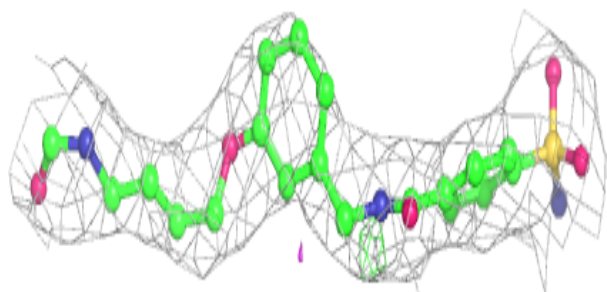
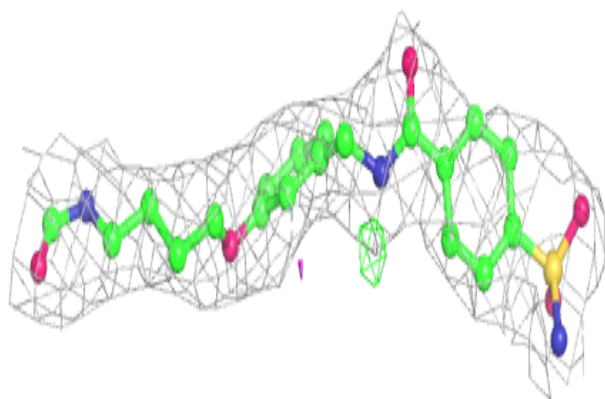
Electron density around QUK B 321:

$2mF_o-DF_c$ (at 0.7 rmsd) in gray
 mF_o-DF_c (at 3 rmsd) in purple (negative)
and green (positive)

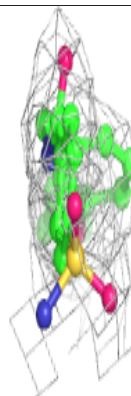
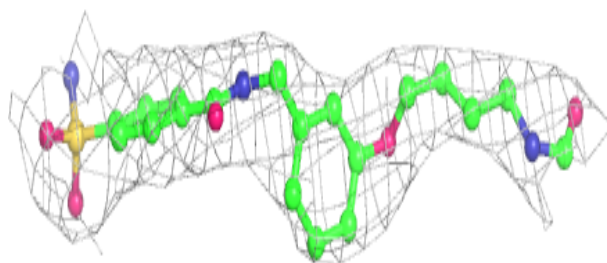
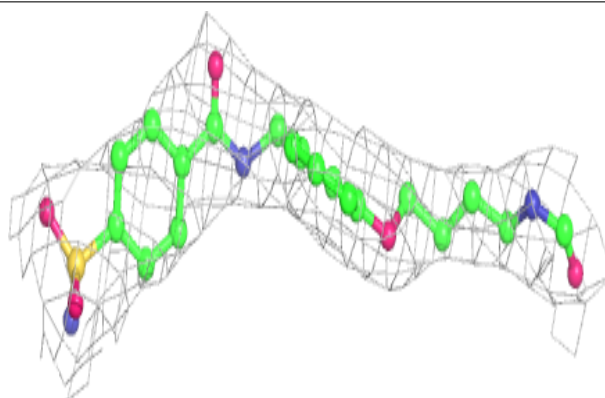


Electron density around 6H0 A 302:

$2mF_o-DF_c$ (at 0.7 rmsd) in gray
 mF_o-DF_c (at 3 rmsd) in purple (negative)
and green (positive)

**Electron density around 6H0 B 302:**

$2mF_o-DF_c$ (at 0.7 rmsd) in gray
 mF_o-DF_c (at 3 rmsd) in purple (negative)
and green (positive)



6.5 Other polymers [i](#)

There are no such residues in this entry.