



Full wwPDB X-ray Structure Validation Report ⓘ

Aug 10, 2020 – 01:51 PM BST

PDB ID : 2I2B
Title : Crystal structure of LmNADK1 from *Listeria monocytogenes*
Authors : Poncet-Montange, G.; Labesse, G.
Deposited on : 2006-08-16
Resolution : 2.10 Å(reported)

This is a Full wwPDB X-ray Structure Validation Report for a publicly released PDB entry.

We welcome your comments at validation@mail.wwpdb.org

A user guide is available at

<https://www.wwpdb.org/validation/2017/XrayValidationReportHelp>

with specific help available everywhere you see the ⓘ symbol.

The following versions of software and data (see [references ⓘ](#)) were used in the production of this report:

MolProbity : 4.02b-467
Mogul : 1.8.5 (274361), CSD as541be (2020)
Xtriage (Phenix) : 1.13
EDS : 2.13.1
Percentile statistics : 20191225.v01 (using entries in the PDB archive December 25th 2019)
Refmac : 5.8.0158
CCP4 : 7.0.044 (Gargrove)
Ideal geometry (proteins) : Engh & Huber (2001)
Ideal geometry (DNA, RNA) : Parkinson et al. (1996)
Validation Pipeline (wwPDB-VP) : 2.13.1

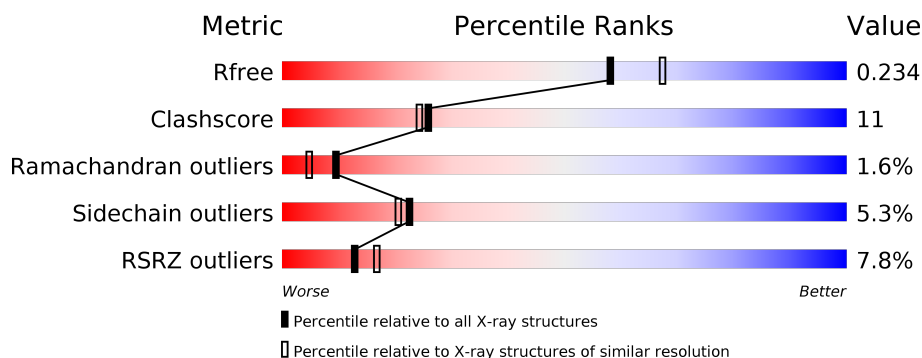
1 Overall quality at a glance

The following experimental techniques were used to determine the structure:

X-RAY DIFFRACTION

The reported resolution of this entry is 2.10 Å.

Percentile scores (ranging between 0-100) for global validation metrics of the entry are shown in the following graphic. The table shows the number of entries on which the scores are based.



Metric	Whole archive (#Entries)	Similar resolution (#Entries, resolution range(Å))
R_{free}	130704	5197 (2.10-2.10)
Clashscore	141614	5710 (2.10-2.10)
Ramachandran outliers	138981	5647 (2.10-2.10)
Sidechain outliers	138945	5648 (2.10-2.10)
RSRZ outliers	127900	5083 (2.10-2.10)

The table below summarises the geometric issues observed across the polymeric chains and their fit to the electron density. The red, orange, yellow and green segments on the lower bar indicate the fraction of residues that contain outliers for ≥ 3 , 2, 1 and 0 types of geometric quality criteria respectively. A grey segment represents the fraction of residues that are not modelled. The numeric value for each fraction is indicated below the corresponding segment, with a dot representing fractions $\leq 5\%$. The upper red bar (where present) indicates the fraction of residues that have poor fit to the electron density. The numeric value is given above the bar.

Mol	Chain	Length	Quality of chain
1	A	272	

The following table lists non-polymeric compounds, carbohydrate monomers and non-standard residues in protein, DNA, RNA chains that are outliers for geometric or electron-density-fit criteria:

Mol	Type	Chain	Res	Chirality	Geometry	Clashes	Electron density
4	GOL	A	401	-	-	-	X

2 Entry composition [i](#)

There are 5 unique types of molecules in this entry. The entry contains 2117 atoms, of which 0 are hydrogens and 0 are deuteriums.

In the tables below, the ZeroOcc column contains the number of atoms modelled with zero occupancy, the AltConf column contains the number of residues with at least one atom in alternate conformation and the Trace column contains the number of residues modelled with at most 2 atoms.

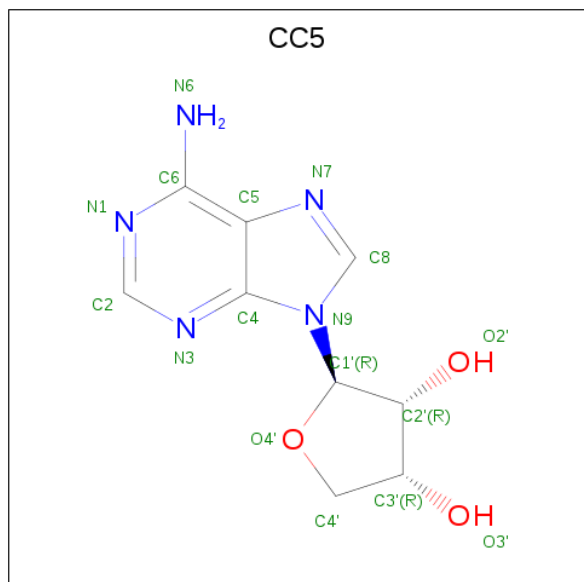
- Molecule 1 is a protein called Probable inorganic polyphosphate/ATP-NAD kinase 1.

Mol	Chain	Residues	Atoms					ZeroOcc	AltConf	Trace
			Total	C	N	O	S			
1	A	258	1998	1284	334	371	9	0	1	0

There are 8 discrepancies between the modelled and reference sequences:

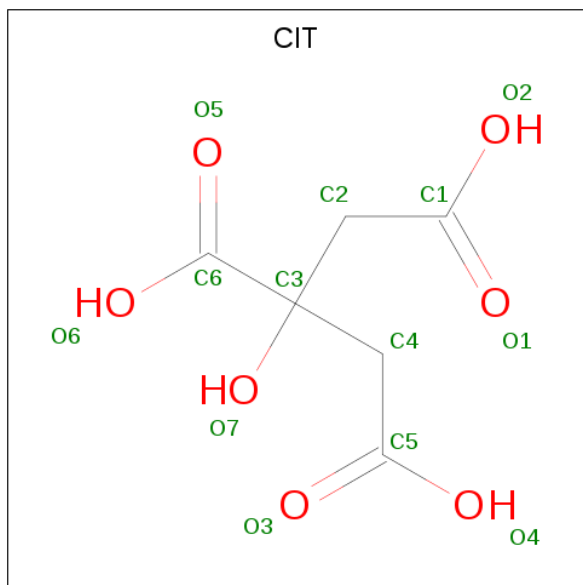
Chain	Residue	Modelled	Actual	Comment	Reference
A	265	LEU	-	cloning artifact	UNP Q8Y8D7
A	266	GLU	-	cloning artifact	UNP Q8Y8D7
A	267	HIS	-	expression tag	UNP Q8Y8D7
A	268	HIS	-	expression tag	UNP Q8Y8D7
A	269	HIS	-	expression tag	UNP Q8Y8D7
A	270	HIS	-	expression tag	UNP Q8Y8D7
A	271	HIS	-	expression tag	UNP Q8Y8D7
A	272	HIS	-	expression tag	UNP Q8Y8D7

- Molecule 2 is BETA-D-ERYTHROFURANOSYL-ADENOSINE (three-letter code: CC5) (formula: $C_9H_{11}N_5O_3$).



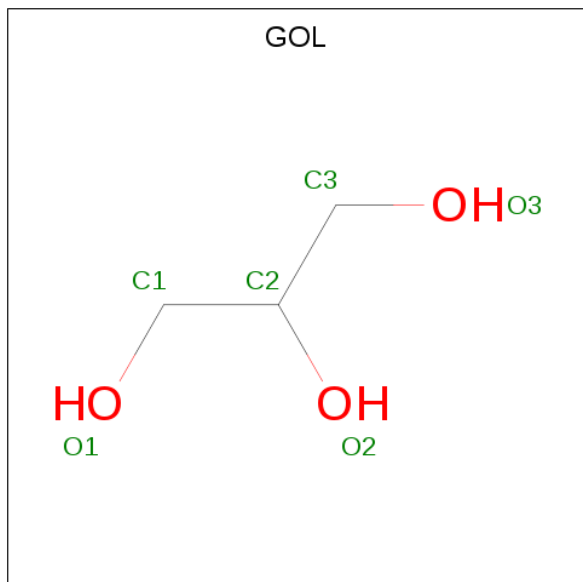
Mol	Chain	Residues	Atoms				ZeroOcc	AltConf
2	A	1	Total	C	N	O	0	0
			17	9	5	3		
2	A	1	Total	C	N	O	0	0
			17	9	5	3		

- Molecule 3 is CITRIC ACID (three-letter code: CIT) (formula: $C_6H_8O_7$).



Mol	Chain	Residues	Atoms			ZeroOcc	AltConf
3	A	1	Total	C	O	0	0
			13	6	7		

- Molecule 4 is GLYCEROL (three-letter code: GOL) (formula: $C_3H_8O_3$).

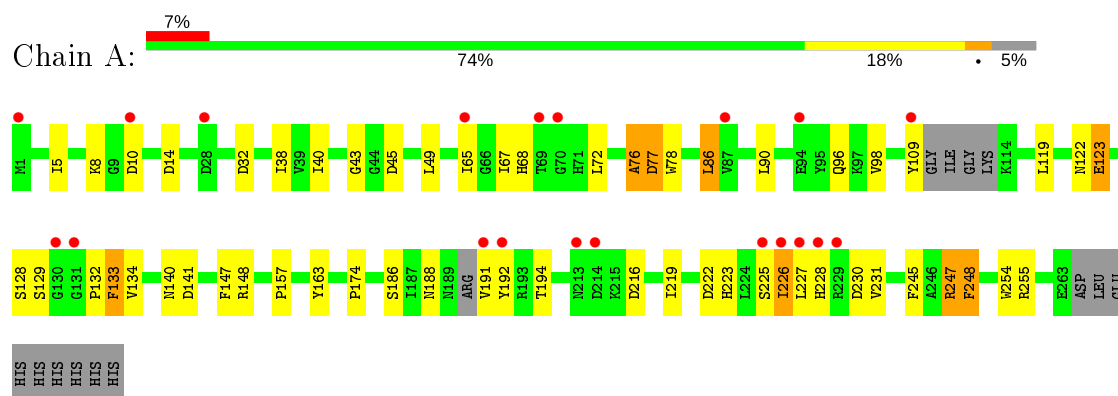


Mol	Chain	Residues	Atoms			ZeroOcc	AltConf
4	A	1	Total	C	O	0	0
			6	3	3		

- Molecule 5 is water.

Mol	Chain	Residues	Atoms		ZeroOcc	AltConf
5	A	66	Total	O	0	0
			66	66		

- Molecule 1: Probable inorganic polyphosphate/ATP-NAD kinase 1



4 Data and refinement statistics

Property	Value	Source
Space group	I 2 2 2	Depositor
Cell constants a, b, c, α , β , γ	63.24Å 74.56Å 118.29Å 90.00° 90.00° 90.00°	Depositor
Resolution (Å)	30.99 – 2.10 29.57 – 2.10	Depositor EDS
% Data completeness (in resolution range)	99.9 (30.99-2.10) 99.9 (29.57-2.10)	Depositor EDS
R_{merge}	0.08	Depositor
R_{sym}	(Not available)	Depositor
$\langle I/\sigma(I) \rangle$ ¹	2.66 (at 2.10Å)	Xtriage
Refinement program	REFMAC 5.2.0005	Depositor
R, R_{free}	0.203 , 0.231 0.208 , 0.234	Depositor DCC
R_{free} test set	831 reflections (4.97%)	wwPDB-VP
Wilson B-factor (Å ²)	32.4	Xtriage
Anisotropy	0.140	Xtriage
Bulk solvent k_{sol} (e/Å ³), B_{sol} (Å ²)	0.32 , 53.7	EDS
L-test for twinning ²	$\langle L \rangle = 0.48$, $\langle L^2 \rangle = 0.31$	Xtriage
Estimated twinning fraction	No twinning to report.	Xtriage
F_o, F_c correlation	0.94	EDS
Total number of atoms	2117	wwPDB-VP
Average B, all atoms (Å ²)	22.0	wwPDB-VP

Xtriage's analysis on translational NCS is as follows: *The largest off-origin peak in the Patterson function is 5.38% of the height of the origin peak. No significant pseudotranslation is detected.*

¹Intensities estimated from amplitudes.

²Theoretical values of $\langle |L| \rangle$, $\langle L^2 \rangle$ for acentric reflections are 0.5, 0.333 respectively for untwinned datasets, and 0.375, 0.2 for perfectly twinned datasets.

5 Model quality

5.1 Standard geometry

Bond lengths and bond angles in the following residue types are not validated in this section: CC5, GOL, CIT

The Z score for a bond length (or angle) is the number of standard deviations the observed value is removed from the expected value. A bond length (or angle) with $|Z| > 5$ is considered an outlier worth inspection. RMSZ is the root-mean-square of all Z scores of the bond lengths (or angles).

Mol	Chain	Bond lengths		Bond angles	
		RMSZ	$\# Z > 5$	RMSZ	$\# Z > 5$
1	A	0.43	0/2051	0.79	6/2779 (0.2%)

Chiral center outliers are detected by calculating the chiral volume of a chiral center and verifying if the center is modelled as a planar moiety or with the opposite hand. A planarity outlier is detected by checking planarity of atoms in a peptide group, atoms in a mainchain group or atoms of a sidechain that are expected to be planar.

Mol	Chain	#Chirality outliers	#Planarity outliers
1	A	0	3

There are no bond length outliers.

All (6) bond angle outliers are listed below:

Mol	Chain	Res	Type	Atoms	Z	Observed(°)	Ideal(°)
1	A	10	ASP	CB-CG-OD2	6.83	124.45	118.30
1	A	222	ASP	CB-CG-OD2	6.75	124.38	118.30
1	A	45	ASP	CB-CG-OD2	5.28	123.06	118.30
1	A	32	ASP	CB-CG-OD2	5.08	122.88	118.30
1	A	14	ASP	CB-CG-OD2	5.07	122.86	118.30
1	A	230	ASP	CB-CG-OD2	5.02	122.82	118.30

There are no chirality outliers.

All (3) planarity outliers are listed below:

Mol	Chain	Res	Type	Group
1	A	191	VAL	Peptide
1	A	247	ARG	Peptide
1	A	76	ALA	Peptide

5.2 Too-close contacts ⓘ

In the following table, the Non-H and H(model) columns list the number of non-hydrogen atoms and hydrogen atoms in the chain respectively. The H(added) column lists the number of hydrogen atoms added and optimized by MolProbity. The Clashes column lists the number of clashes within the asymmetric unit, whereas Symm-Clashes lists symmetry related clashes.

Mol	Chain	Non-H	H(model)	H(added)	Clashes	Symm-Clashes
1	A	1998	0	1902	42	0
2	A	34	0	22	0	0
3	A	13	0	5	0	0
4	A	6	0	8	3	0
5	A	66	0	0	1	0
All	All	2117	0	1937	42	0

The all-atom clashscore is defined as the number of clashes found per 1000 atoms (including hydrogen atoms). The all-atom clashscore for this structure is 11.

All (42) close contacts within the same asymmetric unit are listed below, sorted by their clash magnitude.

Atom-1	Atom-2	Interatomic distance (Å)	Clash overlap (Å)
1:A:247:ARG:HA	1:A:248:PHE:HB2	1.43	0.98
1:A:254:TRP:HB2	4:A:401:GOL:H11	1.68	0.76
1:A:132:PRO:HA	1:A:133:PHE:HB3	1.68	0.75
1:A:188:ASN:HD21	1:A:194:THR:H	1.40	0.67
1:A:247:ARG:HA	1:A:248:PHE:CB	2.23	0.65
1:A:132:PRO:O	5:A:463:HOH:O	2.15	0.64
1:A:67:ILE:HD11	1:A:86[A]:LEU:HD21	1.83	0.61
1:A:255:ARG:HA	4:A:401:GOL:H32	1.83	0.60
1:A:132:PRO:HA	1:A:133:PHE:CB	2.32	0.60
1:A:38:ILE:HD13	1:A:90:LEU:HD22	1.82	0.59
1:A:254:TRP:CB	4:A:401:GOL:H11	2.33	0.59
1:A:225:SER:HA	1:A:226:ILE:HB	1.86	0.58
1:A:147:PHE:CE2	1:A:186:SER:HB3	2.40	0.57
1:A:226:ILE:HG22	1:A:228:HIS:CE1	2.40	0.56
1:A:86[A]:LEU:HD12	1:A:90:LEU:HD12	1.87	0.55
1:A:109:TYR:OH	1:A:228:HIS:CD2	2.60	0.55
1:A:223:HIS:CD2	1:A:223:HIS:H	2.25	0.55
1:A:128:SER:OG	1:A:129:SER:HB3	2.08	0.54
1:A:226:ILE:CG2	1:A:228:HIS:CE1	2.91	0.54
1:A:96:GLN:N	1:A:247:ARG:O	2.43	0.52
1:A:68:HIS:HB3	1:A:76:ALA:O	2.10	0.51
1:A:128:SER:HA	1:A:129:SER:HB3	1.92	0.50

Continued on next page...

Continued from previous page...

Atom-1	Atom-2	Interatomic distance (Å)	Clash overlap (Å)
1:A:225:SER:HA	1:A:226:ILE:CB	2.42	0.50
1:A:247:ARG:CA	1:A:248:PHE:HB2	2.28	0.49
1:A:188:ASN:ND2	1:A:194:THR:H	2.10	0.48
1:A:219:ILE:O	1:A:226:ILE:HB	2.13	0.48
1:A:65:ILE:HD11	1:A:90:LEU:HD21	1.95	0.47
1:A:157:PRO:HB2	1:A:174:PRO:HA	1.96	0.47
1:A:5:ILE:HG12	1:A:40:ILE:HB	1.95	0.47
1:A:78:TRP:HZ2	1:A:248:PHE:HB3	1.78	0.47
1:A:225:SER:CA	1:A:226:ILE:HG13	2.45	0.47
1:A:122:ASN:HB3	1:A:123:GLU:OE2	2.18	0.43
1:A:43:GLY:O	1:A:68:HIS:HA	2.19	0.43
1:A:90:LEU:HG	1:A:248:PHE:HZ	1.84	0.42
1:A:248:PHE:HA	1:A:248:PHE:HD2	1.78	0.42
1:A:78:TRP:CZ2	1:A:86[B]:LEU:HD21	2.54	0.42
1:A:98:VAL:HG13	1:A:245:PHE:HB2	2.01	0.41
1:A:226:ILE:HG22	1:A:228:HIS:ND1	2.36	0.41
1:A:140:ASN:O	1:A:141:ASP:HB2	2.20	0.41
1:A:109:TYR:CE1	1:A:228:HIS:HD2	2.38	0.41
1:A:228:HIS:HB3	1:A:231:VAL:CG2	2.51	0.41
1:A:134:VAL:HG22	1:A:148:ARG:HG3	2.03	0.40

There are no symmetry-related clashes.

5.3 Torsion angles [i](#)

5.3.1 Protein backbone [i](#)

In the following table, the Percentiles column shows the percent Ramachandran outliers of the chain as a percentile score with respect to all X-ray entries followed by that with respect to entries of similar resolution.

The Analysed column shows the number of residues for which the backbone conformation was analysed, and the total number of residues.

Mol	Chain	Analysed	Favoured	Allowed	Outliers	Percentiles
1	A	253/272 (93%)	235 (93%)	14 (6%)	4 (2%)	9 5

All (4) Ramachandran outliers are listed below:

Mol	Chain	Res	Type
1	A	226	ILE

Continued on next page...

Continued from previous page...

Mol	Chain	Res	Type
1	A	248	PHE
1	A	77	ASP
1	A	133	PHE

5.3.2 Protein sidechains ⓘ

In the following table, the Percentiles column shows the percent sidechain outliers of the chain as a percentile score with respect to all X-ray entries followed by that with respect to entries of similar resolution.

The Analysed column shows the number of residues for which the sidechain conformation was analysed, and the total number of residues.

Mol	Chain	Analysed	Rotameric	Outliers	Percentiles	
1	A	208/237 (88%)	196 (94%)	12 (6%)	20	17

All (12) residues with a non-rotameric sidechain are listed below:

Mol	Chain	Res	Type
1	A	8	LYS
1	A	49	LEU
1	A	72	LEU
1	A	77	ASP
1	A	86[A]	LEU
1	A	86[B]	LEU
1	A	119	LEU
1	A	123	GLU
1	A	163	TYR
1	A	192	TYR
1	A	216	ASP
1	A	227	LEU

Some sidechains can be flipped to improve hydrogen bonding and reduce clashes. All (5) such sidechains are listed below:

Mol	Chain	Res	Type
1	A	188	ASN
1	A	210	GLN
1	A	218	GLN
1	A	223	HIS
1	A	228	HIS

5.3.3 RNA ⓘ

There are no RNA molecules in this entry.

5.4 Non-standard residues in protein, DNA, RNA chains ⓘ

There are no non-standard protein/DNA/RNA residues in this entry.

5.5 Carbohydrates ⓘ

There are no monosaccharides in this entry.

5.6 Ligand geometry ⓘ

4 ligands are modelled in this entry.

In the following table, the Counts columns list the number of bonds (or angles) for which Mogul statistics could be retrieved, the number of bonds (or angles) that are observed in the model and the number of bonds (or angles) that are defined in the Chemical Component Dictionary. The Link column lists molecule types, if any, to which the group is linked. The Z score for a bond length (or angle) is the number of standard deviations the observed value is removed from the expected value. A bond length (or angle) with $|Z| > 2$ is considered an outlier worth inspection. RMSZ is the root-mean-square of all Z scores of the bond lengths (or angles).

Mol	Type	Chain	Res	Link	Bond lengths			Bond angles		
					Counts	RMSZ	# $ Z > 2$	Counts	RMSZ	# $ Z > 2$
2	CC5	A	274	-	16,19,19	0.88	0	15,28,28	1.63	2 (13%)
2	CC5	A	273	-	16,19,19	0.97	1 (6%)	15,28,28	1.49	2 (13%)
3	CIT	A	301	-	3,12,12	1.49	1 (33%)	3,17,17	1.42	1 (33%)
4	GOL	A	401	-	5,5,5	0.47	0	5,5,5	0.38	0

In the following table, the Chirals column lists the number of chiral outliers, the number of chiral centers analysed, the number of these observed in the model and the number defined in the Chemical Component Dictionary. Similar counts are reported in the Torsion and Rings columns. '-' means no outliers of that kind were identified.

Mol	Type	Chain	Res	Link	Chirals	Torsions	Rings
2	CC5	A	274	-	-	0/0/17/17	0/3/3/3
2	CC5	A	273	-	-	0/0/17/17	0/3/3/3
3	CIT	A	301	-	-	0/6/16/16	-
4	GOL	A	401	-	-	2/4/4/4	-

All (2) bond length outliers are listed below:

Mol	Chain	Res	Type	Atoms	Z	Observed(Å)	Ideal(Å)
2	A	273	CC5	O4'-C1'	2.56	1.45	1.41
3	A	301	CIT	O7-C3	2.26	1.46	1.43

All (5) bond angle outliers are listed below:

Mol	Chain	Res	Type	Atoms	Z	Observed(°)	Ideal(°)
2	A	274	CC5	N3-C2-N1	-4.70	121.33	128.68
2	A	273	CC5	N3-C2-N1	-4.21	122.10	128.68
2	A	274	CC5	C4'-C3'-C2'	2.40	105.28	101.63
2	A	273	CC5	C3'-C2'-C1'	2.11	104.19	101.04
3	A	301	CIT	C3-C4-C5	-2.04	111.72	114.98

There are no chirality outliers.

All (2) torsion outliers are listed below:

Mol	Chain	Res	Type	Atoms
4	A	401	GOL	C1-C2-C3-O3
4	A	401	GOL	O2-C2-C3-O3

There are no ring outliers.

1 monomer is involved in 3 short contacts:

Mol	Chain	Res	Type	Clashes	Symm-Clashes
4	A	401	GOL	3	0

5.7 Other polymers [i](#)

There are no such residues in this entry.

5.8 Polymer linkage issues [i](#)

There are no chain breaks in this entry.

6 Fit of model and data [i](#)

6.1 Protein, DNA and RNA chains [i](#)

In the following table, the column labelled ‘#RSRZ> 2’ contains the number (and percentage) of RSRZ outliers, followed by percent RSRZ outliers for the chain as percentile scores relative to all X-ray entries and entries of similar resolution. The OWAB column contains the minimum, median, 95th percentile and maximum values of the occupancy-weighted average B-factor per residue. The column labelled ‘Q< 0.9’ lists the number of (and percentage) of residues with an average occupancy less than 0.9.

Mol	Chain	Analysed	<RSRZ>	#RSRZ>2	OWAB(Å ²)	Q<0.9
1	A	258/272 (94%)	0.43	20 (7%) 13 17	16, 22, 30, 33	44 (17%)

All (20) RSRZ outliers are listed below:

Mol	Chain	Res	Type	RSRZ
1	A	227	LEU	4.1
1	A	109	TYR	3.8
1	A	191	VAL	3.3
1	A	225	SER	3.1
1	A	10	ASP	3.1
1	A	1	MET	3.0
1	A	94	GLU	3.0
1	A	65	ILE	3.0
1	A	213	ASN	3.0
1	A	131	GLY	2.9
1	A	130	GLY	2.9
1	A	228	HIS	2.5
1	A	214	ASP	2.5
1	A	229	ARG	2.4
1	A	192	TYR	2.4
1	A	226	ILE	2.3
1	A	70	GLY	2.2
1	A	87	VAL	2.1
1	A	69	THR	2.0
1	A	28	ASP	2.0

6.2 Non-standard residues in protein, DNA, RNA chains [i](#)

There are no non-standard protein/DNA/RNA residues in this entry.

6.3 Carbohydrates [i](#)

There are no monosaccharides in this entry.

6.4 Ligands [i](#)

In the following table, the Atoms column lists the number of modelled atoms in the group and the number defined in the chemical component dictionary. The B-factors column lists the minimum, median, 95th percentile and maximum values of B factors of atoms in the group. The column labelled 'Q< 0.9' lists the number of atoms with occupancy less than 0.9.

Mol	Type	Chain	Res	Atoms	RSCC	RSR	B-factors(\AA^2)	Q<0.9
4	GOL	A	401	6/6	0.77	0.50	19,20,21,21	6
3	CIT	A	301	13/13	0.80	0.19	18,19,21,22	13
2	CC5	A	274	17/17	0.81	0.34	16,18,21,21	0
2	CC5	A	273	17/17	0.88	0.23	18,21,21,22	0

6.5 Other polymers [i](#)

There are no such residues in this entry.