



Full wwPDB X-ray Structure Validation Report ⓘ

May 18, 2020 – 01:19 pm BST

PDB ID : 4I30
Title : Crystal structure of Canavalia maritima seeds lectin (ConM) co-crystalized with gamma-aminobutyric acid (GABA) and soaked with adenine
Authors : Delatorre, P.; Silva-Filho, J.C.; Nobrega, R.B.; Gadelha, C.A.A.; Cavada, B.S.; Rocha, B.A.M.; Santi-Gadelha, T.; Teixeira, C.S.
Deposited on : 2012-11-23
Resolution : 1.89 Å(reported)

This is a Full wwPDB X-ray Structure Validation Report for a publicly released PDB entry.

We welcome your comments at validation@mail.wwpdb.org

A user guide is available at

<https://www.wwpdb.org/validation/2017/XrayValidationReportHelp>

with specific help available everywhere you see the ⓘ symbol.

The following versions of software and data (see [references ⓘ](#)) were used in the production of this report:

MolProbity	:	4.02b-467
Mogul	:	1.8.5 (274361), CSD as541be (2020)
Xtriage (Phenix)	:	1.13
EDS	:	2.11
Percentile statistics	:	20191225.v01 (using entries in the PDB archive December 25th 2019)
Refmac	:	5.8.0158
CCP4	:	7.0.044 (Gargrove)
Ideal geometry (proteins)	:	Engh & Huber (2001)
Ideal geometry (DNA, RNA)	:	Parkinson et al. (1996)
Validation Pipeline (wwPDB-VP)	:	2.11

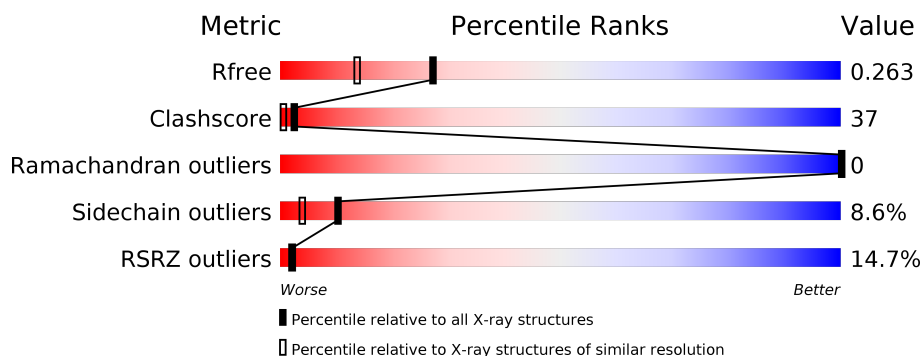
1 Overall quality at a glance

The following experimental techniques were used to determine the structure:

X-RAY DIFFRACTION

The reported resolution of this entry is 1.89 Å.

Percentile scores (ranging between 0-100) for global validation metrics of the entry are shown in the following graphic. The table shows the number of entries on which the scores are based.



Metric	Whole archive (#Entries)	Similar resolution (#Entries, resolution range(Å))
R_{free}	130704	6207 (1.90-1.90)
Clashscore	141614	6847 (1.90-1.90)
Ramachandran outliers	138981	6760 (1.90-1.90)
Sidechain outliers	138945	6760 (1.90-1.90)
RSRZ outliers	127900	6082 (1.90-1.90)

The table below summarises the geometric issues observed across the polymeric chains and their fit to the electron density. The red, orange, yellow and green segments on the lower bar indicate the fraction of residues that contain outliers for ≥ 3 , 2, 1 and 0 types of geometric quality criteria respectively. A grey segment represents the fraction of residues that are not modelled. The numeric value for each fraction is indicated below the corresponding segment, with a dot representing fractions $\leq 5\%$. The upper red bar (where present) indicates the fraction of residues that have poor fit to the electron density. The numeric value is given above the bar.

Mol	Chain	Length	Quality of chain
1	A	237	

The following table lists non-polymeric compounds, carbohydrate monomers and non-standard residues in protein, DNA, RNA chains that are outliers for geometric or electron-density-fit criteria:

Mol	Type	Chain	Res	Chirality	Geometry	Clashes	Electron density
4	ABU	A	303	-	-	X	-
5	ADE	A	304	-	-	X	-

2 Entry composition

There are 6 unique types of molecules in this entry. The entry contains 1867 atoms, of which 0 are hydrogens and 0 are deuteriums.

In the tables below, the ZeroOcc column contains the number of atoms modelled with zero occupancy, the AltConf column contains the number of residues with at least one atom in alternate conformation and the Trace column contains the number of residues modelled with at most 2 atoms.

- Molecule 1 is a protein called Concanavalin-A.

Mol	Chain	Residues	Atoms					ZeroOcc	AltConf	Trace
1	A	232	Total	C	N	O	S	0	0	0
			1761	1113	294	353	1			

There is a discrepancy between the modelled and reference sequences:

Chain	Residue	Modelled	Actual	Comment	Reference
A	168	SER	ASN	SEE REMARK 999	UNP P81460

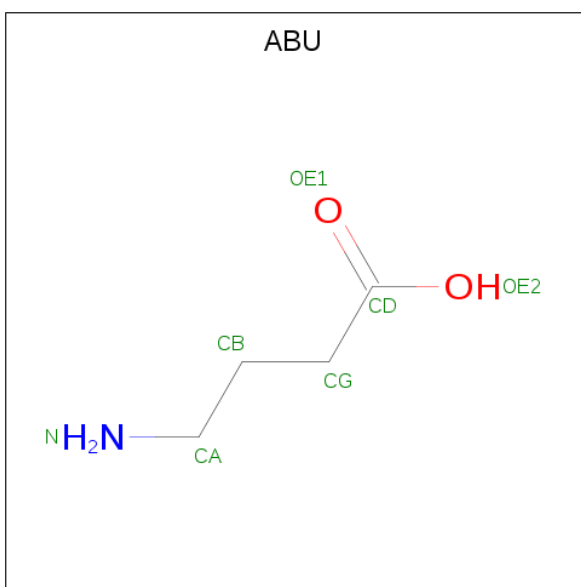
- Molecule 2 is CALCIUM ION (three-letter code: CA) (formula: Ca).

Mol	Chain	Residues	Atoms		ZeroOcc	AltConf
2	A	1	Total	Ca	0	0
			1	1		

- Molecule 3 is MANGANESE (II) ION (three-letter code: MN) (formula: Mn).

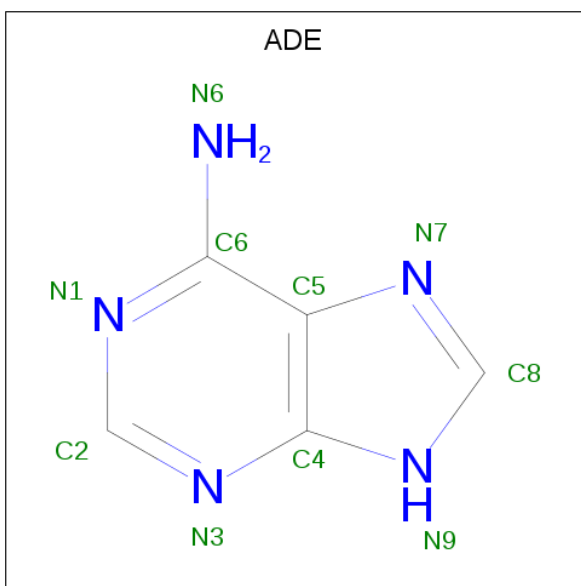
Mol	Chain	Residues	Atoms		ZeroOcc	AltConf
3	A	1	Total	Mn	0	0
			1	1		

- Molecule 4 is GAMMA-AMINO-BUTANOIC ACID (three-letter code: ABU) (formula: C₄H₉NO₂).



Mol	Chain	Residues	Atoms				ZeroOcc	AltConf
4	A	1	Total	C	N	O	0	0
			7	4	1	2		

- Molecule 5 is ADENINE (three-letter code: ADE) (formula: C₅H₅N₅).



Mol	Chain	Residues	Atoms			ZeroOcc	AltConf
5	A	1	Total	C	N	0	0
			10	5	5		

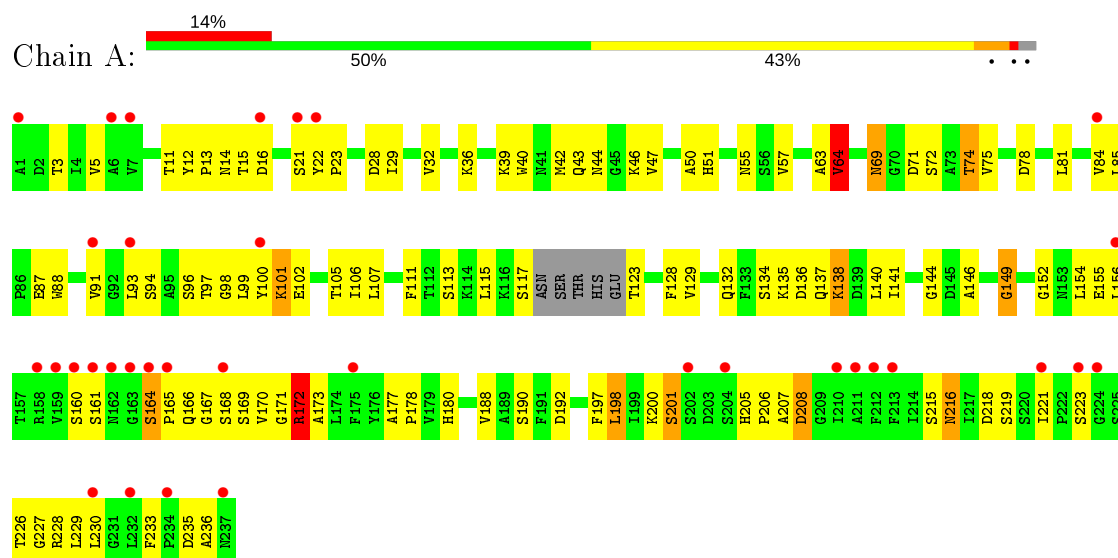
- Molecule 6 is water.

Mol	Chain	Residues	Atoms		ZeroOcc	AltConf
6	A	87	Total	O	0	0
			87	87		

3 Residue-property plots [i](#)

These plots are drawn for all protein, RNA and DNA chains in the entry. The first graphic for a chain summarises the proportions of the various outlier classes displayed in the second graphic. The second graphic shows the sequence view annotated by issues in geometry and electron density. Residues are color-coded according to the number of geometric quality criteria for which they contain at least one outlier: green = 0, yellow = 1, orange = 2 and red = 3 or more. A red dot above a residue indicates a poor fit to the electron density ($RSRZ > 2$). Stretches of 2 or more consecutive residues without any outlier are shown as a green connector. Residues present in the sample, but not in the model, are shown in grey.

• Molecule 1: Concanavalin-A



4 Data and refinement statistics

Property	Value	Source
Space group	I 2 2 2	Depositor
Cell constants a, b, c, α , β , γ	66.99Å 70.41Å 97.05Å 90.00° 90.00° 90.00°	Depositor
Resolution (Å)	57.00 – 1.89 22.44 – 1.89	Depositor EDS
% Data completeness (in resolution range)	99.8 (57.00-1.89) 100.0 (22.44-1.89)	Depositor EDS
R_{merge}	0.07	Depositor
R_{sym}	0.07	Depositor
$\langle I/\sigma(I) \rangle$ ¹	4.10 (at 1.89Å)	Xtriage
Refinement program	REFMAC 5.5.0110	Depositor
R, R_{free}	0.222 , 0.264 0.218 , 0.263	Depositor DCC
R_{free} test set	960 reflections (5.12%)	wwPDB-VP
Wilson B-factor (Å ²)	25.0	Xtriage
Anisotropy	0.552	Xtriage
Bulk solvent k_{sol} (e/Å ³), B_{sol} (Å ²)	0.41 , 39.7	EDS
L-test for twinning ²	$\langle L \rangle = 0.50$, $\langle L^2 \rangle = 0.33$	Xtriage
Estimated twinning fraction	0.000 for -1/2*h+1/2*k+1/2*l,1/2*h-1/2*k +1/2*l,h+k 0.012 for -1/2*h+1/2*k-1/2*l,1/2*h-1/2*k- 1/2*l,-h-k 0.015 for k,h,-l 0.012 for -1/2*h-1/2*k+1/2*l,-1/2*h-1/2*k- 1/2*l,h-k 0.007 for -1/2*h-1/2*k-1/2*l,-1/2*h-1/2*k+ 1/2*l,-h+k	Xtriage
F_o, F_c correlation	0.94	EDS
Total number of atoms	1867	wwPDB-VP
Average B, all atoms (Å ²)	30.0	wwPDB-VP

Xtriage's analysis on translational NCS is as follows: *The largest off-origin peak in the Patterson function is 7.45% of the height of the origin peak. No significant pseudotranslation is detected.*

¹Intensities estimated from amplitudes.

²Theoretical values of $\langle |L| \rangle$, $\langle L^2 \rangle$ for acentric reflections are 0.5, 0.333 respectively for untwinned datasets, and 0.375, 0.2 for perfectly twinned datasets.

5 Model quality

5.1 Standard geometry

Bond lengths and bond angles in the following residue types are not validated in this section: CA, MN, ADE, ABU

The Z score for a bond length (or angle) is the number of standard deviations the observed value is removed from the expected value. A bond length (or angle) with $|Z| > 5$ is considered an outlier worth inspection. RMSZ is the root-mean-square of all Z scores of the bond lengths (or angles).

Mol	Chain	Bond lengths		Bond angles	
		RMSZ	$\# Z > 5$	RMSZ	$\# Z > 5$
1	A	1.20	3/1800 (0.2%)	1.23	10/2450 (0.4%)

All (3) bond length outliers are listed below:

Mol	Chain	Res	Type	Atoms	Z	Observed(Å)	Ideal(Å)
1	A	129	VAL	CB-CG1	-5.94	1.40	1.52
1	A	72	SER	CB-OG	-5.20	1.35	1.42
1	A	57	VAL	CB-CG1	5.09	1.63	1.52

All (10) bond angle outliers are listed below:

Mol	Chain	Res	Type	Atoms	Z	Observed(°)	Ideal(°)
1	A	64	VAL	CB-CA-C	-5.97	100.06	111.40
1	A	149	GLY	N-CA-C	-5.80	98.61	113.10
1	A	172	ARG	NE-CZ-NH2	-5.69	117.45	120.30
1	A	172	ARG	CB-CG-CD	-5.63	96.96	111.60
1	A	188	VAL	CB-CA-C	-5.50	100.95	111.40
1	A	64	VAL	CG1-CB-CG2	5.44	119.60	110.90
1	A	74	THR	CA-CB-CG2	-5.36	104.90	112.40
1	A	134	SER	CB-CA-C	-5.27	100.09	110.10
1	A	78	ASP	CB-CG-OD1	5.19	122.97	118.30
1	A	72	SER	N-CA-CB	-5.08	102.88	110.50

There are no chirality outliers.

There are no planarity outliers.

5.2 Too-close contacts ⓘ

In the following table, the Non-H and H(model) columns list the number of non-hydrogen atoms and hydrogen atoms in the chain respectively. The H(added) column lists the number of hydrogen atoms added and optimized by MolProbity. The Clashes column lists the number of clashes within the asymmetric unit, whereas Symm-Clashes lists symmetry related clashes.

Mol	Chain	Non-H	H(model)	H(added)	Clashes	Symm-Clashes
1	A	1761	0	1716	130	0
2	A	1	0	0	0	0
3	A	1	0	0	0	0
4	A	7	0	5	6	0
5	A	10	0	4	8	0
6	A	87	0	0	2	0
All	All	1867	0	1725	130	0

The all-atom clashscore is defined as the number of clashes found per 1000 atoms (including hydrogen atoms). The all-atom clashscore for this structure is 37.

All (130) close contacts within the same asymmetric unit are listed below, sorted by their clash magnitude.

Atom-1	Atom-2	Interatomic distance (Å)	Clash overlap (Å)
1:A:113:SER:HB2	4:A:303:ABU:N	1.37	1.39
1:A:16:ASP:HB2	5:A:304:ADE:C2	1.61	1.33
1:A:170:VAL:CG2	1:A:226:THR:HG22	1.58	1.32
1:A:101:LYS:HD3	1:A:167:GLY:N	1.53	1.22
1:A:170:VAL:HG23	1:A:226:THR:HG22	1.16	1.08
1:A:44:ASN:HD21	1:A:201:SER:N	1.51	1.07
1:A:44:ASN:ND2	1:A:201:SER:H	1.55	1.04
1:A:81:LEU:HA	1:A:84:VAL:HG13	1.41	1.02
1:A:205:HIS:HD2	1:A:206:PRO:O	1.41	1.01
1:A:170:VAL:HG21	1:A:226:THR:HG22	1.42	0.98
1:A:113:SER:CB	4:A:303:ABU:N	2.27	0.98
1:A:16:ASP:CB	5:A:304:ADE:C2	2.46	0.98
1:A:16:ASP:HB2	5:A:304:ADE:H2	1.02	0.94
1:A:170:VAL:CG2	1:A:226:THR:CG2	2.46	0.93
1:A:170:VAL:HG23	1:A:226:THR:CG2	2.03	0.88
1:A:136:ASP:OD2	1:A:138:LYS:HE2	1.77	0.84
1:A:14:ASN:HB3	5:A:304:ADE:C2	2.13	0.84
1:A:101:LYS:HD3	1:A:166:GLN:C	1.99	0.83
1:A:101:LYS:CD	1:A:167:GLY:N	2.43	0.80
1:A:170:VAL:HG21	1:A:226:THR:CG2	2.10	0.79
1:A:228:ARG:NH1	5:A:304:ADE:N3	2.33	0.76

Continued on next page...

Continued from previous page...

Atom-1	Atom-2	Interatomic distance (Å)	Clash overlap (Å)
1:A:106:ILE:HB	1:A:154:LEU:HB3	1.67	0.76
1:A:3:THR:H	1:A:216:ASN:ND2	1.83	0.74
1:A:81:LEU:HA	1:A:84:VAL:CG1	2.15	0.74
1:A:107:LEU:HD12	1:A:107:LEU:N	2.03	0.73
1:A:64:VAL:HG13	1:A:74:THR:OG1	1.89	0.72
1:A:15:THR:HG21	1:A:21:SER:HB3	1.72	0.72
1:A:136:ASP:OD2	1:A:138:LYS:CE	2.38	0.70
1:A:94:SER:OG	1:A:172:ARG:HG2	1.92	0.70
1:A:100:TYR:HB3	1:A:205:HIS:O	1.92	0.69
1:A:216:ASN:ND2	1:A:216:ASN:H	1.90	0.69
1:A:205:HIS:CD2	1:A:206:PRO:O	2.34	0.69
1:A:101:LYS:HE3	1:A:167:GLY:HA3	1.74	0.68
1:A:113:SER:HB2	4:A:303:ABU:CA	2.24	0.66
1:A:102:GLU:HG2	1:A:207:ALA:O	1.94	0.66
1:A:81:LEU:CA	1:A:84:VAL:HG13	2.22	0.65
1:A:101:LYS:HD3	1:A:167:GLY:CA	2.27	0.65
1:A:93:LEU:O	1:A:172:ARG:HB3	1.97	0.64
1:A:15:THR:CG2	1:A:21:SER:HB3	2.30	0.60
1:A:169:SER:C	1:A:170:VAL:HG23	2.20	0.60
1:A:36:LYS:HG3	1:A:75:VAL:CG2	2.32	0.60
1:A:198:LEU:HD23	1:A:198:LEU:C	2.21	0.60
1:A:44:ASN:ND2	1:A:201:SER:N	2.29	0.60
1:A:170:VAL:CG2	1:A:226:THR:HA	2.32	0.59
1:A:208:ASP:OD1	1:A:227:GLY:HA2	2.02	0.59
1:A:3:THR:N	1:A:216:ASN:HD21	2.01	0.58
1:A:208:ASP:CG	1:A:227:GLY:HA2	2.24	0.58
1:A:3:THR:H	1:A:216:ASN:HD21	1.49	0.58
1:A:5:VAL:CG2	1:A:84:VAL:HG21	2.34	0.58
1:A:113:SER:CB	4:A:303:ABU:CA	2.82	0.57
1:A:84:VAL:HG22	1:A:85:LEU:N	2.18	0.57
1:A:84:VAL:HG22	1:A:85:LEU:HG	1.85	0.57
1:A:160:SER:OG	1:A:164:SER:HB3	2.04	0.56
1:A:3:THR:N	1:A:216:ASN:ND2	2.54	0.56
1:A:107:LEU:N	1:A:107:LEU:CD1	2.69	0.56
1:A:16:ASP:HB2	5:A:304:ADE:N1	2.16	0.56
1:A:169:SER:O	1:A:170:VAL:CG2	2.54	0.56
1:A:22:TYR:CD1	1:A:39:LYS:HG3	2.42	0.55
1:A:169:SER:C	1:A:170:VAL:CG2	2.75	0.54
1:A:229:LEU:HD13	1:A:233:PHE:O	2.08	0.54
1:A:146:ALA:HA	1:A:155:GLU:O	2.08	0.54
1:A:47:VAL:HG22	1:A:198:LEU:HB2	1.90	0.54

Continued on next page...

Continued from previous page...

Atom-1	Atom-2	Interatomic distance (Å)	Clash overlap (Å)
1:A:169:SER:O	1:A:170:VAL:HG22	2.08	0.54
1:A:74:THR:HG22	1:A:75:VAL:N	2.22	0.53
1:A:13:PRO:HG3	1:A:22:TYR:C	2.28	0.53
1:A:84:VAL:CG2	1:A:85:LEU:N	2.72	0.53
1:A:11:THR:HG22	1:A:42:MET:HG3	1.91	0.52
1:A:136:ASP:OD2	1:A:138:LYS:NZ	2.42	0.52
1:A:44:ASN:HD21	1:A:201:SER:H	0.70	0.52
1:A:5:VAL:HG21	1:A:84:VAL:HG21	1.91	0.51
1:A:198:LEU:CD2	1:A:198:LEU:C	2.78	0.51
1:A:132:GLN:OE1	1:A:152:GLY:HA3	2.11	0.51
1:A:170:VAL:HG21	1:A:226:THR:CA	2.42	0.50
1:A:170:VAL:HG21	1:A:226:THR:HA	1.93	0.50
1:A:63:ALA:O	1:A:74:THR:HG23	2.12	0.50
1:A:69:ASN:ND2	1:A:71:ASP:H	2.08	0.50
1:A:101:LYS:HB3	1:A:167:GLY:HA2	1.94	0.49
1:A:235:ASP:OD1	1:A:235:ASP:C	2.51	0.48
1:A:135:LYS:HA	1:A:149:GLY:HA3	1.95	0.48
1:A:218:ASP:O	1:A:219:SER:C	2.51	0.48
1:A:137:GLN:HG2	1:A:140:LEU:HD12	1.94	0.48
1:A:12:TYR:HD1	1:A:205:HIS:CD2	2.32	0.47
1:A:88:TRP:CH2	1:A:180:HIS:HB2	2.49	0.47
1:A:101:LYS:HE3	1:A:167:GLY:CA	2.42	0.47
1:A:23:PRO:HB2	1:A:40:TRP:O	2.13	0.47
1:A:156:LEU:O	1:A:171:GLY:HA3	2.14	0.47
1:A:3:THR:O	1:A:215:SER:HA	2.14	0.47
1:A:97:THR:O	1:A:226:THR:HB	2.14	0.47
1:A:22:TYR:CG	1:A:39:LYS:HG3	2.50	0.47
1:A:44:ASN:ND2	1:A:200:LYS:HA	2.30	0.47
1:A:216:ASN:HD22	1:A:216:ASN:H	1.62	0.46
1:A:105:THR:O	1:A:198:LEU:N	2.40	0.46
1:A:208:ASP:OD2	1:A:227:GLY:C	2.54	0.46
1:A:207:ALA:HB1	1:A:208:ASP:OD1	2.16	0.46
1:A:180:HIS:O	4:A:303:ABU:CB	2.64	0.46
1:A:43:GLN:HE21	1:A:46:LYS:HD3	1.81	0.46
1:A:14:ASN:HA	5:A:304:ADE:N1	2.32	0.45
1:A:100:TYR:HB2	1:A:207:ALA:HB3	1.97	0.45
1:A:32:VAL:HB	1:A:233:PHE:CD2	2.52	0.45
1:A:170:VAL:HG22	1:A:226:THR:HA	1.99	0.45
1:A:51:HIS:O	1:A:63:ALA:HA	2.18	0.44
1:A:28:ASP:O	1:A:29:ILE:HD13	2.18	0.44
1:A:208:ASP:CG	1:A:227:GLY:C	2.76	0.44

Continued on next page...

Continued from previous page...

Atom-1	Atom-2	Interatomic distance (Å)	Clash overlap (Å)
1:A:81:LEU:HD23	1:A:84:VAL:HG11	1.99	0.44
1:A:141:ILE:O	1:A:173:ALA:HA	2.18	0.44
1:A:208:ASP:CG	1:A:227:GLY:CA	2.86	0.43
1:A:102:GLU:HA	1:A:201:SER:HB2	2.00	0.43
1:A:55:ASN:HA	1:A:190:SER:HA	2.01	0.43
1:A:115:LEU:O	1:A:123:THR:HA	2.19	0.43
1:A:87:GLU:HG2	1:A:180:HIS:CD2	2.54	0.43
1:A:144:GLY:N	1:A:221:ILE:CD1	2.82	0.43
1:A:105:THR:O	1:A:197:PHE:HA	2.18	0.43
1:A:170:VAL:CG2	1:A:226:THR:CA	2.97	0.42
1:A:180:HIS:O	4:A:303:ABU:HB1	2.19	0.42
1:A:96:SER:HA	1:A:169:SER:O	2.19	0.42
1:A:16:ASP:CB	5:A:304:ADE:H2	1.95	0.42
1:A:50:ALA:HA	1:A:64:VAL:O	2.20	0.42
1:A:111:PHE:HB3	1:A:128:PHE:CZ	2.55	0.42
1:A:170:VAL:CG2	1:A:226:THR:CB	2.98	0.42
1:A:102:GLU:C	1:A:165:PRO:HB3	2.41	0.41
1:A:208:ASP:HB3	6:A:482:HOH:O	2.21	0.41
1:A:235:ASP:OD1	1:A:236:ALA:N	2.53	0.41
1:A:229:LEU:HD11	1:A:235:ASP:HA	2.03	0.41
1:A:91:VAL:HG11	1:A:111:PHE:CZ	2.56	0.41
1:A:177:ALA:HA	1:A:178:PRO:HD3	1.84	0.40
1:A:13:PRO:HB3	1:A:21:SER:HA	2.03	0.40
1:A:100:TYR:HB2	1:A:207:ALA:CB	2.52	0.40
1:A:36:LYS:HA	1:A:36:LYS:HD3	1.95	0.40
1:A:96:SER:HB2	1:A:226:THR:HA	2.02	0.40
1:A:98:GLY:HA3	6:A:476:HOH:O	2.21	0.40

There are no symmetry-related clashes.

5.3 Torsion angles ⓘ

5.3.1 Protein backbone ⓘ

In the following table, the Percentiles column shows the percent Ramachandran outliers of the chain as a percentile score with respect to all X-ray entries followed by that with respect to entries of similar resolution.

The Analysed column shows the number of residues for which the backbone conformation was analysed, and the total number of residues.

Mol	Chain	Analysed	Favoured	Allowed	Outliers	Percentiles	
1	A	228/237 (96%)	221 (97%)	7 (3%)	0	100	100

There are no Ramachandran outliers to report.

5.3.2 Protein sidechains ⓘ

In the following table, the Percentiles column shows the percent sidechain outliers of the chain as a percentile score with respect to all X-ray entries followed by that with respect to entries of similar resolution.

The Analysed column shows the number of residues for which the sidechain conformation was analysed, and the total number of residues.

Mol	Chain	Analysed	Rotameric	Outliers	Percentiles	
1	A	197/202 (98%)	180 (91%)	17 (9%)	10	4

All (17) residues with a non-rotameric sidechain are listed below:

Mol	Chain	Res	Type
1	A	64	VAL
1	A	69	ASN
1	A	99	LEU
1	A	101	LYS
1	A	117	SER
1	A	138	LYS
1	A	161	SER
1	A	164	SER
1	A	168	SER
1	A	172	ARG
1	A	192	ASP
1	A	198	LEU
1	A	201	SER
1	A	208	ASP
1	A	216	ASN
1	A	223	SER
1	A	230	LEU

Some sidechains can be flipped to improve hydrogen bonding and reduce clashes. All (6) such sidechains are listed below:

Mol	Chain	Res	Type
1	A	43	GLN

Continued on next page...

Continued from previous page...

Mol	Chain	Res	Type
1	A	44	ASN
1	A	69	ASN
1	A	205	HIS
1	A	216	ASN
1	A	237	ASN

5.3.3 RNA [i](#)

There are no RNA molecules in this entry.

5.4 Non-standard residues in protein, DNA, RNA chains [i](#)

There are no non-standard protein/DNA/RNA residues in this entry.

5.5 Carbohydrates [i](#)

There are no carbohydrates in this entry.

5.6 Ligand geometry [i](#)

Of 4 ligands modelled in this entry, 2 are monoatomic - leaving 2 for Mogul analysis.

In the following table, the Counts columns list the number of bonds (or angles) for which Mogul statistics could be retrieved, the number of bonds (or angles) that are observed in the model and the number of bonds (or angles) that are defined in the Chemical Component Dictionary. The Link column lists molecule types, if any, to which the group is linked. The Z score for a bond length (or angle) is the number of standard deviations the observed value is removed from the expected value. A bond length (or angle) with $|Z| > 2$ is considered an outlier worth inspection. RMSZ is the root-mean-square of all Z scores of the bond lengths (or angles).

Mol	Type	Chain	Res	Link	Bond lengths			Bond angles		
					Counts	RMSZ	$\# Z > 2$	Counts	RMSZ	$\# Z > 2$
5	ADE	A	304	-	9,11,11	1.02	1 (11%)	7,15,15	2.24	1 (14%)
4	ABU	A	303	-	3,6,6	0.44	0	2,6,6	0.79	0

In the following table, the Chirals column lists the number of chiral outliers, the number of chiral centers analysed, the number of these observed in the model and the number defined in the Chemical Component Dictionary. Similar counts are reported in the Torsion and Rings columns. '-' means no outliers of that kind were identified.

Mol	Type	Chain	Res	Link	Chirals	Torsions	Rings
5	ADE	A	304	-	-	-	0/2/2/2
4	ABU	A	303	-	-	1/2/4/4	-

All (1) bond length outliers are listed below:

Mol	Chain	Res	Type	Atoms	Z	Observed(Å)	Ideal(Å)
5	A	304	ADE	C4-N9	2.38	1.39	1.34

All (1) bond angle outliers are listed below:

Mol	Chain	Res	Type	Atoms	Z	Observed(°)	Ideal(°)
5	A	304	ADE	C5-C6-N6	5.12	128.13	120.35

There are no chirality outliers.

All (1) torsion outliers are listed below:

Mol	Chain	Res	Type	Atoms
4	A	303	ABU	CA-CB-CG-CD

There are no ring outliers.

2 monomers are involved in 14 short contacts:

Mol	Chain	Res	Type	Clashes	Symm-Clashes
5	A	304	ADE	8	0
4	A	303	ABU	6	0

5.7 Other polymers [i](#)

There are no such residues in this entry.

5.8 Polymer linkage issues [i](#)

There are no chain breaks in this entry.

6 Fit of model and data ⓘ

6.1 Protein, DNA and RNA chains ⓘ

In the following table, the column labelled ‘#RSRZ> 2’ contains the number (and percentage) of RSRZ outliers, followed by percent RSRZ outliers for the chain as percentile scores relative to all X-ray entries and entries of similar resolution. The OWAB column contains the minimum, median, 95th percentile and maximum values of the occupancy-weighted average B-factor per residue. The column labelled ‘Q< 0.9’ lists the number of (and percentage) of residues with an average occupancy less than 0.9.

Mol	Chain	Analysed	<RSRZ>	#RSRZ>2	OWAB(Å ²)	Q<0.9
1	A	232/237 (97%)	0.84	34 (14%) 2 2	15, 29, 46, 57	0

All (34) RSRZ outliers are listed below:

Mol	Chain	Res	Type	RSRZ
1	A	1	ALA	5.8
1	A	162	ASN	4.6
1	A	16	ASP	4.4
1	A	163	GLY	3.6
1	A	202	SER	3.5
1	A	224	GLY	3.5
1	A	230	LEU	3.4
1	A	164	SER	3.4
1	A	221	ILE	3.3
1	A	91	VAL	3.3
1	A	237	ASN	3.1
1	A	211	ALA	3.1
1	A	161	SER	3.0
1	A	168	SER	2.9
1	A	160	SER	2.9
1	A	84	VAL	2.9
1	A	7	VAL	2.8
1	A	210	ILE	2.8
1	A	6	ALA	2.7
1	A	158	ARG	2.6
1	A	223	SER	2.5
1	A	213	PHE	2.5
1	A	159	VAL	2.5
1	A	165	PRO	2.4
1	A	93	LEU	2.3
1	A	234	PRO	2.3
1	A	204	SER	2.2

Continued on next page...

Continued from previous page...

Mol	Chain	Res	Type	RSRZ
1	A	22	TYR	2.2
1	A	100	TYR	2.1
1	A	175	PHE	2.1
1	A	212	PHE	2.1
1	A	156	LEU	2.1
1	A	21	SER	2.0
1	A	232	LEU	2.0

6.2 Non-standard residues in protein, DNA, RNA chains [i](#)

There are no non-standard protein/DNA/RNA residues in this entry.

6.3 Carbohydrates [i](#)

There are no carbohydrates in this entry.

6.4 Ligands [i](#)

In the following table, the Atoms column lists the number of modelled atoms in the group and the number defined in the chemical component dictionary. The B-factors column lists the minimum, median, 95th percentile and maximum values of B factors of atoms in the group. The column labelled 'Q< 0.9' lists the number of atoms with occupancy less than 0.9.

Mol	Type	Chain	Res	Atoms	RSCC	RSR	B-factors(\AA^2)	Q<0.9
4	ABU	A	303	7/7	0.72	0.21	23,25,33,39	0
5	ADE	A	304	10/10	0.79	0.21	55,56,58,59	0
2	CA	A	301	1/1	0.96	0.08	37,37,37,37	0
3	MN	A	302	1/1	1.00	0.08	35,35,35,35	0

6.5 Other polymers [i](#)

There are no such residues in this entry.