



# Full wwPDB X-ray Structure Validation Report ⓘ

Jun 7, 2020 – 02:57 am BST

PDB ID : 6I4F  
Title : Crystal Structure of Plasmodium falciparum actin I (A272W mutant) in the Mg-K-ATP/ADP state  
Authors : Kumpula, E.-P.; Lopez, A.J.; Tajedin, L.; Han, H.; Kursula, I.  
Deposited on : 2018-11-09  
Resolution : 1.50 Å(reported)

This is a Full wwPDB X-ray Structure Validation Report for a publicly released PDB entry.

We welcome your comments at [validation@mail.wwpdb.org](mailto:validation@mail.wwpdb.org)

A user guide is available at

<https://www.wwpdb.org/validation/2017/XrayValidationReportHelp>

with specific help available everywhere you see the ⓘ symbol.

---

The following versions of software and data (see [references ⓘ](#)) were used in the production of this report:

MolProbity : 4.02b-467  
Mogul : 1.8.5 (274361), CSD as541be (2020)  
Xtriage (Phenix) : 1.13  
EDS : 2.11  
buster-report : 1.1.7 (2018)  
Percentile statistics : 20191225.v01 (using entries in the PDB archive December 25th 2019)  
Refmac : 5.8.0158  
CCP4 : 7.0.044 (Gargrove)  
Ideal geometry (proteins) : Engh & Huber (2001)  
Ideal geometry (DNA, RNA) : Parkinson et al. (1996)  
Validation Pipeline (wwPDB-VP) : 2.11

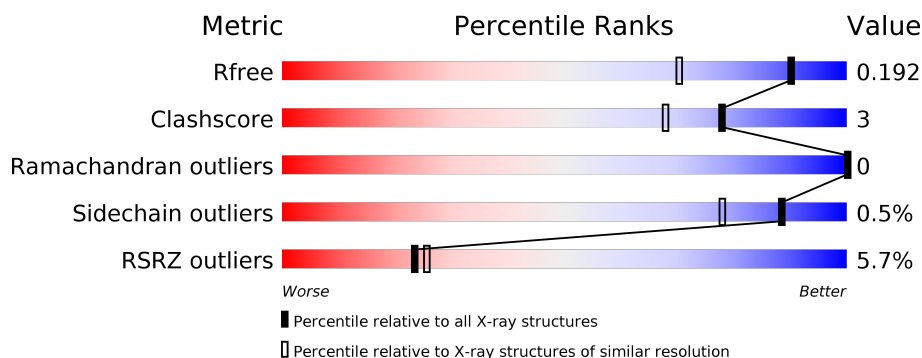
# 1 Overall quality at a glance

The following experimental techniques were used to determine the structure:

## *X-RAY DIFFRACTION*

The reported resolution of this entry is 1.50 Å.

Percentile scores (ranging between 0-100) for global validation metrics of the entry are shown in the following graphic. The table shows the number of entries on which the scores are based.



Metric	Whole archive (#Entries)	Similar resolution (#Entries, resolution range(Å))
$R_{free}$	130704	2936 (1.50-1.50)
Clashscore	141614	3144 (1.50-1.50)
Ramachandran outliers	138981	3066 (1.50-1.50)
Sidechain outliers	138945	3064 (1.50-1.50)
RSRZ outliers	127900	2884 (1.50-1.50)

The table below summarises the geometric issues observed across the polymeric chains and their fit to the electron density. The red, orange, yellow and green segments on the lower bar indicate the fraction of residues that contain outliers for  $\geq 3$ , 2, 1 and 0 types of geometric quality criteria respectively. A grey segment represents the fraction of residues that are not modelled. The numeric value for each fraction is indicated below the corresponding segment, with a dot representing fractions  $\leq 5\%$ . The upper red bar (where present) indicates the fraction of residues that have poor fit to the electron density. The numeric value is given above the bar.

Mol	Chain	Length	Quality of chain
1	A	378	<div> <div>5%</div> <div> <div></div> <div>86%</div> <div>7%</div> <div>7%</div> </div> </div>
2	G	127	<div> <div>7%</div> <div> <div></div> <div>95%</div> <div>••</div> </div> </div>

## 2 Entry composition

There are 12 unique types of molecules in this entry. The entry contains 8684 atoms, of which 4071 are hydrogens and 0 are deuteriums.

In the tables below, the ZeroOcc column contains the number of atoms modelled with zero occupancy, the AltConf column contains the number of residues with at least one atom in alternate conformation and the Trace column contains the number of residues modelled with at most 2 atoms.

- Molecule 1 is a protein called Actin-1.

Mol	Chain	Residues	Atoms						ZeroOcc	AltConf	Trace
			Total	C	H	N	O	S			
1	A	350	5963	1892	2993	495	567	16	0	34	0

There are 3 discrepancies between the modelled and reference sequences:

Chain	Residue	Modelled	Actual	Comment	Reference
A	-1	GLY	-	expression tag	UNP Q8I4X0
A	0	ALA	-	expression tag	UNP Q8I4X0
A	272	TRP	ALA	engineered mutation	UNP Q8I4X0

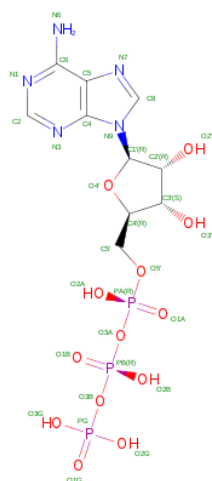
- Molecule 2 is a protein called Gelsolin.

Mol	Chain	Residues	Atoms						ZeroOcc	AltConf	Trace
			Total	C	H	N	O	S			
2	G	124	2031	663	1008	170	189	1	0	6	0

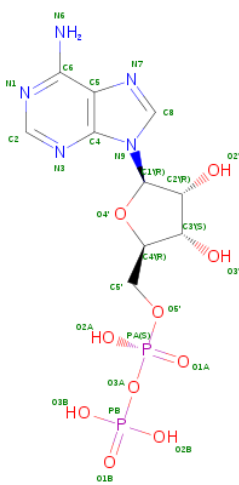
There are 2 discrepancies between the modelled and reference sequences:

Chain	Residue	Modelled	Actual	Comment	Reference
G	-1	GLY	-	expression tag	UNP P13020
G	0	PRO	-	expression tag	UNP P13020

- Molecule 3 is ADENOSINE-5'-TRIPHOSPHATE (three-letter code: ATP) (formula:  $C_{10}H_{16}N_5O_{13}P_3$ ) (labeled as "Ligand of Interest" by author).



- Molecule 4 is ADENOSINE-5'-DIPHOSPHATE (three-letter code: ADP) (formula:  $\text{C}_{10}\text{H}_{15}\text{N}_5\text{O}_{10}\text{P}_2$ ) (labeled as "Ligand of Interest" by author).



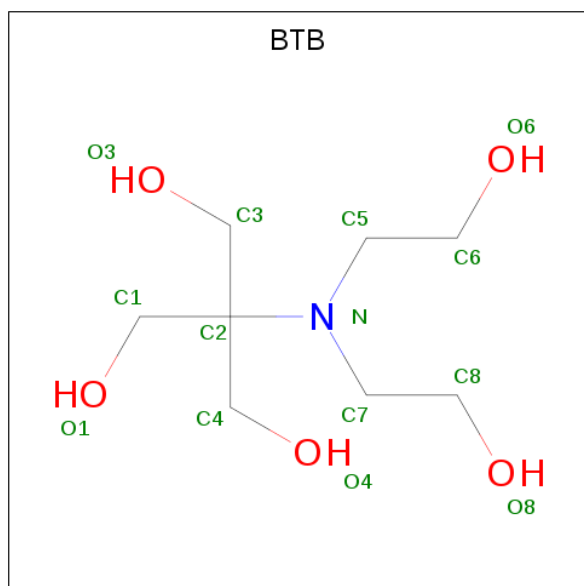
- Molecule 5 is MAGNESIUM ION (three-letter code: MG) (formula: Mg) (labeled as "Ligand of Interest" by author).

Mol	Chain	Residues	Atoms		ZeroOcc	AltConf
5	A	1	Total	Mg	0	0
			1	1		

- Molecule 6 is POTASSIUM ION (three-letter code: K) (formula: K) (labeled as "Ligand of Interest" by author).

Mol	Chain	Residues	Atoms		ZeroOcc	AltConf
6	A	1	Total	K	0	0
			1	1		

- Molecule 7 is 2-[BIS-(2-HYDROXY-ETHYL)-AMINO]-2-HYDROXYMETHYL-PROPAN E-1,3-DIOL (three-letter code: BTB) (formula: C<sub>8</sub>H<sub>19</sub>NO<sub>5</sub>).



Mol	Chain	Residues	Atoms					ZeroOcc	AltConf
7	A	1	Total	C	H	N	O	0	1
			66	16	38	2	10		

- Molecule 8 is DI(HYDROXYETHYL)ETHER (three-letter code: PEG) (formula: C<sub>4</sub>H<sub>10</sub>O<sub>3</sub>).



Mol	Chain	Residues	Atoms				ZeroOcc	AltConf
8	A	1	Total	C	H	O	0	0
			17	4	10	3		

- Molecule 9 is SODIUM ION (three-letter code: NA) (formula: Na).

Mol	Chain	Residues	Atoms		ZeroOcc	AltConf
9	A	1	Total	Na	0	0
			1	1		

- Molecule 10 is CHLORIDE ION (three-letter code: CL) (formula: Cl).

Mol	Chain	Residues	Atoms		ZeroOcc	AltConf
10	A	1	Total	Cl	0	0
			1	1		

- Molecule 11 is CALCIUM ION (three-letter code: CA) (formula: Ca).

Mol	Chain	Residues	Atoms		ZeroOcc	AltConf
11	G	2	Total	Ca	0	0
			2	2		

- Molecule 12 is water.

Mol	Chain	Residues	Atoms		ZeroOcc	AltConf
12	A	374	Total	O	0	26
			378	378		

*Continued on next page...*

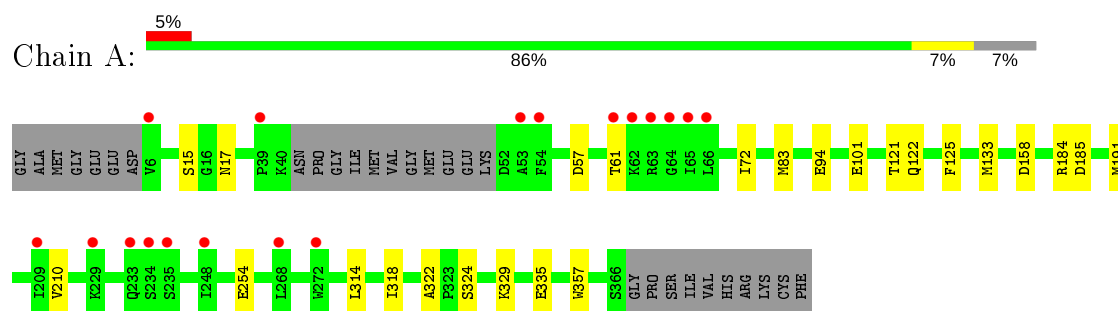
*Continued from previous page...*

Mol	Chain	Residues	Atoms		ZeroOcc	AltConf
12	G	143	Total	O	0	0
			143	143		

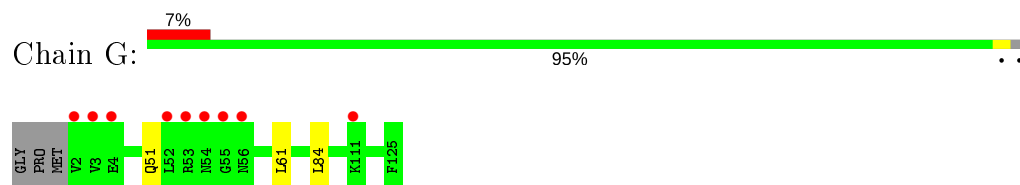
### 3 Residue-property plots [i](#)

These plots are drawn for all protein, RNA and DNA chains in the entry. The first graphic for a chain summarises the proportions of the various outlier classes displayed in the second graphic. The second graphic shows the sequence view annotated by issues in geometry and electron density. Residues are color-coded according to the number of geometric quality criteria for which they contain at least one outlier: green = 0, yellow = 1, orange = 2 and red = 3 or more. A red dot above a residue indicates a poor fit to the electron density ( $RSRZ > 2$ ). Stretches of 2 or more consecutive residues without any outlier are shown as a green connector. Residues present in the sample, but not in the model, are shown in grey.

#### • Molecule 1: Actin-1



#### • Molecule 2: Gelsolin





## 4 Data and refinement statistics

Property	Value	Source
Space group	P 21 2 21	Depositor
Cell constants a, b, c, $\alpha$ , $\beta$ , $\gamma$	68.76Å 71.45Å 110.04Å 90.00° 90.00° 90.00°	Depositor
Resolution (Å)	45.18 – 1.50 45.18 – 1.40	Depositor EDS
% Data completeness (in resolution range)	100.0 (45.18-1.50) 100.0 (45.18-1.40)	Depositor EDS
$R_{merge}$	0.09	Depositor
$R_{sym}$	(Not available)	Depositor
$\langle I/\sigma(I) \rangle$ <sup>1</sup>	0.97 (at 1.40Å)	Xtriage
Refinement program	PHENIX 1.13_2998	Depositor
R, $R_{free}$	0.155 , 0.192 0.155 , 0.192	Depositor DCC
$R_{free}$ test set	1124 reflections (1.05%)	wwPDB-VP
Wilson B-factor (Å <sup>2</sup> )	24.7	Xtriage
Anisotropy	0.092	Xtriage
Bulk solvent $k_{sol}$ (e/Å <sup>3</sup> ), $B_{sol}$ (Å <sup>2</sup> )	0.35 , 42.0	EDS
L-test for twinning <sup>2</sup>	$\langle  L  \rangle = 0.49$ , $\langle L^2 \rangle = 0.32$	Xtriage
Estimated twinning fraction	0.018 for k,h,-l	Xtriage
$F_o, F_c$ correlation	0.98	EDS
Total number of atoms	8684	wwPDB-VP
Average B, all atoms (Å <sup>2</sup> )	31.0	wwPDB-VP

Xtriage's analysis on translational NCS is as follows: *The largest off-origin peak in the Patterson function is 5.18% of the height of the origin peak. No significant pseudotranslation is detected.*

<sup>1</sup>Intensities estimated from amplitudes.

<sup>2</sup>Theoretical values of  $\langle |L| \rangle$ ,  $\langle L^2 \rangle$  for acentric reflections are 0.5, 0.333 respectively for untwinned datasets, and 0.375, 0.2 for perfectly twinned datasets.

## 5 Model quality

### 5.1 Standard geometry

Bond lengths and bond angles in the following residue types are not validated in this section: MG, ADP, CL, NA, K, ATP, BTB, PEG, CA

The Z score for a bond length (or angle) is the number of standard deviations the observed value is removed from the expected value. A bond length (or angle) with  $|Z| > 5$  is considered an outlier worth inspection. RMSZ is the root-mean-square of all Z scores of the bond lengths (or angles).

Mol	Chain	Bond lengths		Bond angles	
		RMSZ	# Z  >5	RMSZ	# Z  >5
1	A	0.47	0/3104	0.63	0/4197
2	G	0.47	0/1071	0.61	0/1445
All	All	0.47	0/4175	0.62	0/5642

There are no bond length outliers.

There are no bond angle outliers.

There are no chirality outliers.

There are no planarity outliers.

### 5.2 Too-close contacts

In the following table, the Non-H and H(model) columns list the number of non-hydrogen atoms and hydrogen atoms in the chain respectively. The H(added) column lists the number of hydrogen atoms added and optimized by MolProbity. The Clashes column lists the number of clashes within the asymmetric unit, whereas Symm-Clashes lists symmetry related clashes.

Mol	Chain	Non-H	H(model)	H(added)	Clashes	Symm-Clashes
1	A	2970	2993	2976	21	1
2	G	1023	1008	1008	1	0
3	A	31	11	12	2	0
4	A	27	11	12	0	0
5	A	1	0	0	0	0
6	A	1	0	0	0	0
7	A	28	38	38	2	0
8	A	7	10	10	0	0
9	A	1	0	0	0	0
10	A	1	0	0	1	0
11	G	2	0	0	0	0

*Continued on next page...*

*Continued from previous page...*

Mol	Chain	Non-H	H(model)	H(added)	Clashes	Symm-Clashes
12	A	378	0	0	9	1
12	G	143	0	0	0	1
All	All	4613	4071	4056	24	3

The all-atom clashscore is defined as the number of clashes found per 1000 atoms (including hydrogen atoms). The all-atom clashscore for this structure is 3.

All (24) close contacts within the same asymmetric unit are listed below, sorted by their clash magnitude.

Atom-1	Atom-2	Interatomic distance (Å)	Clash overlap (Å)
1:A:185:ASP:OD2	12:A:501:HOH:O	2.01	0.78
1:A:122[B]:GLN:NE2	12:A:504:HOH:O	2.18	0.71
1:A:335[B]:GLU:OE2	12:A:502[B]:HOH:O	2.10	0.69
1:A:72[B]:ILE:HD11	1:A:83:MET:SD	2.36	0.66
1:A:72[B]:ILE:HD11	1:A:83:MET:CE	2.31	0.60
1:A:17:ASN:ND2	12:A:510:HOH:O	2.35	0.59
1:A:335[B]:GLU:O	12:A:503:HOH:O	2.13	0.59
1:A:125:PHE:CZ	1:A:133[A]:MET:HG2	2.43	0.53
1:A:322:ALA:O	10:A:408:CL:CL	2.62	0.53
1:A:57:ASP:O	1:A:61:THR:HG23	2.09	0.52
1:A:72[B]:ILE:HD11	1:A:83:MET:HE1	1.90	0.52
2:G:61:LEU:HD21	2:G:84:LEU:HD23	1.93	0.50
1:A:94:GLU:O	7:A:405[B]:BTB:H51	2.14	0.47
3:A:401[A]:ATP:O3G	12:A:505:HOH:O	2.21	0.47
1:A:254:GLU:OE2	12:A:506:HOH:O	2.21	0.46
7:A:405[B]:BTB:C6	12:A:543:HOH:O	2.63	0.46
1:A:158:ASP:OD2	1:A:184[B]:ARG:NH1	2.49	0.45
1:A:329:LYS:HD3	12:A:638:HOH:O	2.16	0.44
1:A:191:MET:HG3	1:A:210:VAL:HG11	2.00	0.44
1:A:314[A]:LEU:HG	1:A:318:ILE:HD12	2.01	0.41
1:A:15[A]:SER:CB	3:A:401[A]:ATP:O3G	2.69	0.41
1:A:72[B]:ILE:CD1	1:A:83:MET:SD	3.08	0.41
1:A:121:THR:HG23	1:A:133[B]:MET:HE2	2.03	0.40

All (3) symmetry-related close contacts are listed below. The label for Atom-2 includes the symmetry operator and encoded unit-cell translations to be applied.

Atom-1	Atom-2	Interatomic distance (Å)	Clash overlap (Å)
12:G:404:HOH:O	12:G:413:HOH:O[2_559]	1.72	0.48
1:A:101:GLU:OE2	1:A:324[B]:SER:OG[4_555]	2.11	0.09

*Continued on next page...*

Continued from previous page...

Atom-1	Atom-2	Interatomic distance (Å)	Clash overlap (Å)
12:A:787:HOH:O	12:A:824:HOH:O[4_554]	2.17	0.03

## 5.3 Torsion angles [i](#)

### 5.3.1 Protein backbone [i](#)

In the following table, the Percentiles column shows the percent Ramachandran outliers of the chain as a percentile score with respect to all X-ray entries followed by that with respect to entries of similar resolution.

The Analysed column shows the number of residues for which the backbone conformation was analysed, and the total number of residues.

Mol	Chain	Analysed	Favoured	Allowed	Outliers	Percentiles	
1	A	381/378 (101%)	374 (98%)	7 (2%)	0	100	100
2	G	129/127 (102%)	127 (98%)	2 (2%)	0	100	100
All	All	510/505 (101%)	501 (98%)	9 (2%)	0	100	100

There are no Ramachandran outliers to report.

### 5.3.2 Protein sidechains [i](#)

In the following table, the Percentiles column shows the percent sidechain outliers of the chain as a percentile score with respect to all X-ray entries followed by that with respect to entries of similar resolution.

The Analysed column shows the number of residues for which the sidechain conformation was analysed, and the total number of residues.

Mol	Chain	Analysed	Rotameric	Outliers	Percentiles	
1	A	334/323 (103%)	333 (100%)	1 (0%)	92	85
2	G	110/105 (105%)	109 (99%)	1 (1%)	78	61
All	All	444/428 (104%)	442 (100%)	2 (0%)	88	78

All (2) residues with a non-rotameric sidechain are listed below:

Mol	Chain	Res	Type
1	A	357	TRP
2	G	51	GLN

Some sidechains can be flipped to improve hydrogen bonding and reduce clashes. There are no such sidechains identified.

### 5.3.3 RNA [i](#)

There are no RNA molecules in this entry.

## 5.4 Non-standard residues in protein, DNA, RNA chains [i](#)

There are no non-standard protein/DNA/RNA residues in this entry.

## 5.5 Carbohydrates [i](#)

There are no carbohydrates in this entry.

## 5.6 Ligand geometry [i](#)

Of 11 ligands modelled in this entry, 6 are monoatomic - leaving 5 for Mogul analysis.

In the following table, the Counts columns list the number of bonds (or angles) for which Mogul statistics could be retrieved, the number of bonds (or angles) that are observed in the model and the number of bonds (or angles) that are defined in the Chemical Component Dictionary. The Link column lists molecule types, if any, to which the group is linked. The Z score for a bond length (or angle) is the number of standard deviations the observed value is removed from the expected value. A bond length (or angle) with  $|Z| > 2$  is considered an outlier worth inspection. RMSZ is the root-mean-square of all Z scores of the bond lengths (or angles).

Mol	Type	Chain	Res	Link	Bond lengths			Bond angles		
					Counts	RMSZ	# Z  > 2	Counts	RMSZ	# Z  > 2
4	ADP	A	402[B]	5	24,29,29	0.87	0	29,45,45	1.24	3 (10%)
8	PEG	A	406	-	6,6,6	0.89	0	5,5,5	0.44	0
3	ATP	A	401[A]	5,6	26,33,33	1.56	3 (11%)	31,52,52	2.35	11 (35%)
7	BTB	A	405[B]	-	13,13,13	2.51	6 (46%)	7,16,16	1.02	0
7	BTB	A	405[A]	-	13,13,13	2.98	5 (38%)	7,16,16	0.65	0

In the following table, the Chirals column lists the number of chiral outliers, the number of chiral centers analysed, the number of these observed in the model and the number defined in the Chemical Component Dictionary. Similar counts are reported in the Torsion and Rings columns. '-' means no outliers of that kind were identified.

Mol	Type	Chain	Res	Link	Chirals	Torsions	Rings
4	ADP	A	402[B]	5	-	1/12/32/32	0/3/3/3

*Continued on next page...*

Continued from previous page...

Mol	Type	Chain	Res	Link	Chirals	Torsions	Rings
8	PEG	A	406	-	-	3/4/4/4	-
3	ATP	A	401[A]	5,6	-	5/18/38/38	0/3/3/3
7	BTB	A	405[B]	-	-	8/21/21/21	-
7	BTB	A	405[A]	-	-	8/21/21/21	-

All (14) bond length outliers are listed below:

Mol	Chain	Res	Type	Atoms	Z	Observed(Å)	Ideal(Å)
7	A	405[A]	BTB	C1-C2	5.88	1.61	1.53
3	A	401[A]	ATP	PA-O5'	5.70	1.82	1.59
7	A	405[A]	BTB	C2-N	5.09	1.58	1.48
7	A	405[A]	BTB	C4-C2	5.05	1.60	1.53
7	A	405[B]	BTB	C1-C2	5.01	1.60	1.53
7	A	405[B]	BTB	C2-N	4.81	1.58	1.48
7	A	405[A]	BTB	C7-N	3.62	1.53	1.48
7	A	405[A]	BTB	C3-C2	3.29	1.57	1.53
7	A	405[B]	BTB	C5-N	3.27	1.52	1.48
7	A	405[B]	BTB	C7-N	3.08	1.52	1.48
7	A	405[B]	BTB	C4-C2	2.75	1.57	1.53
3	A	401[A]	ATP	C2-N3	2.22	1.35	1.32
7	A	405[B]	BTB	C3-C2	2.12	1.56	1.53
3	A	401[A]	ATP	O5'-C5'	-2.12	1.36	1.44

All (14) bond angle outliers are listed below:

Mol	Chain	Res	Type	Atoms	Z	Observed(°)	Ideal(°)
3	A	401[A]	ATP	PA-O3A-PB	-6.58	110.23	132.83
3	A	401[A]	ATP	PB-O3B-PG	-6.20	111.56	132.83
3	A	401[A]	ATP	O5'-PA-O1A	-3.47	95.51	109.07
3	A	401[A]	ATP	O3G-PG-O2G	3.29	120.21	107.64
3	A	401[A]	ATP	O2A-PA-O5'	-3.22	92.80	107.75
4	A	402[B]	ADP	N3-C2-N1	-3.08	123.86	128.68
3	A	401[A]	ATP	O3B-PG-O1G	-2.87	95.30	111.19
3	A	401[A]	ATP	PA-O5'-C5'	-2.71	105.82	121.68
4	A	402[B]	ADP	O3B-PB-O2B	2.31	116.45	107.64
3	A	401[A]	ATP	O3G-PG-O3B	-2.20	97.26	104.64
4	A	402[B]	ADP	O3A-PB-O1B	-2.15	99.27	111.19
3	A	401[A]	ATP	O2A-PA-O1A	2.08	122.51	112.24
3	A	401[A]	ATP	C4-C5-N7	2.06	111.55	109.40
3	A	401[A]	ATP	C2-N1-C6	-2.01	115.32	118.75

There are no chirality outliers.

All (25) torsion outliers are listed below:

Mol	Chain	Res	Type	Atoms
7	A	405[B]	BTB	C1-C2-N-C5
7	A	405[B]	BTB	C1-C2-N-C7
7	A	405[B]	BTB	C3-C2-N-C5
7	A	405[B]	BTB	C3-C2-N-C7
7	A	405[B]	BTB	C4-C2-N-C5
7	A	405[B]	BTB	C4-C2-N-C7
3	A	401[A]	ATP	PB-O3B-PG-O2G
7	A	405[A]	BTB	O1-C1-C2-C3
7	A	405[A]	BTB	O1-C1-C2-C4
7	A	405[A]	BTB	O1-C1-C2-N
7	A	405[A]	BTB	C1-C2-C3-O3
7	A	405[A]	BTB	C4-C2-C3-O3
7	A	405[A]	BTB	N-C2-C3-O3
7	A	405[A]	BTB	N-C5-C6-O6
8	A	406	PEG	O2-C3-C4-O4
7	A	405[B]	BTB	N-C7-C8-O8
7	A	405[A]	BTB	N-C7-C8-O8
8	A	406	PEG	C4-C3-O2-C2
3	A	401[A]	ATP	C3'-C4'-C5'-O5'
4	A	402[B]	ADP	PA-O3A-PB-O1B
8	A	406	PEG	O1-C1-C2-O2
7	A	405[B]	BTB	N-C5-C6-O6
3	A	401[A]	ATP	PB-O3B-PG-O3G
3	A	401[A]	ATP	PG-O3B-PB-O1B
3	A	401[A]	ATP	PB-O3B-PG-O1G

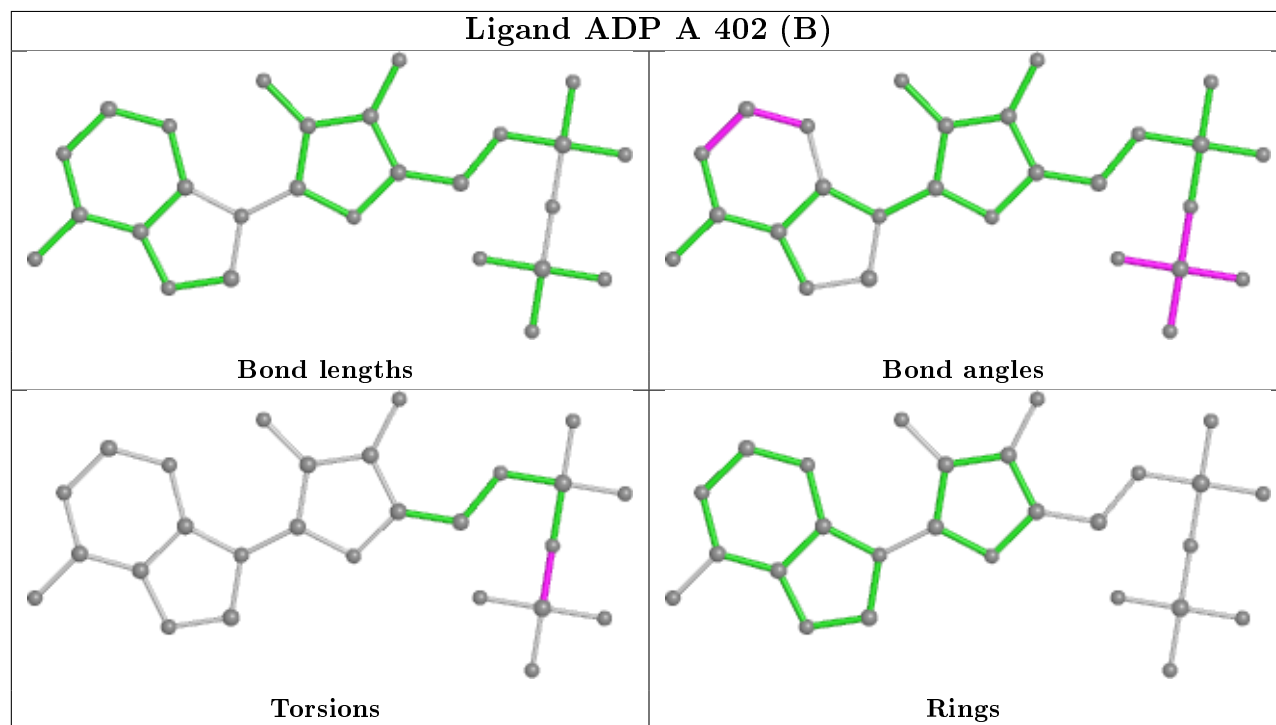
There are no ring outliers.

2 monomers are involved in 4 short contacts:

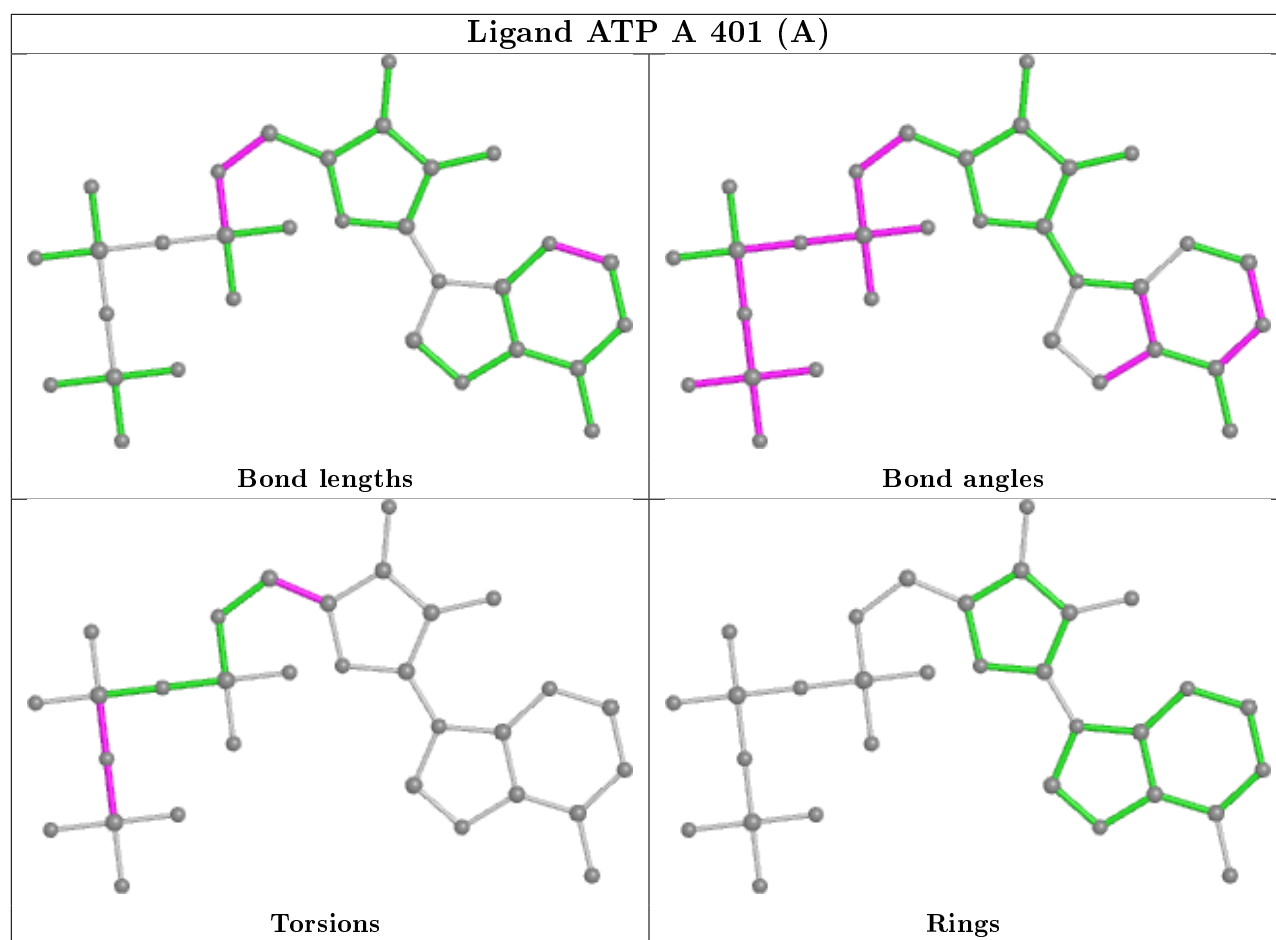
Mol	Chain	Res	Type	Clashes	Symm-Clashes
3	A	401[A]	ATP	2	0
7	A	405[B]	BTB	2	0

The following is a two-dimensional graphical depiction of Mogul quality analysis of bond lengths, bond angles, torsion angles, and ring geometry for all instances of the Ligand of Interest. In addition, ligands with molecular weight > 250 and outliers as shown on the validation Tables will also be included. For torsion angles, if less than 5% of the Mogul distribution of torsion angles is within 10 degrees of the torsion angle in question, then that torsion angle is considered an outlier. Any bond that is central to one or more torsion angles identified as an outlier by Mogul will be highlighted in the graph. For rings, the root-mean-square deviation (RMSD) between the ring

in question and similar rings identified by Mogul is calculated over all ring torsion angles. If the average RMSD is greater than 60 degrees and the minimal RMSD between the ring in question and any Mogul-identified rings is also greater than 60 degrees, then that ring is considered an outlier. The outliers are highlighted in purple. The color gray indicates Mogul did not find sufficient equivalents in the CSD to analyse the geometry.







## 5.7 Other polymers [i](#)

There are no such residues in this entry.

## 5.8 Polymer linkage issues [i](#)

There are no chain breaks in this entry.

## 6 Fit of model and data

### 6.1 Protein, DNA and RNA chains

In the following table, the column labelled ‘#RSRZ> 2’ contains the number (and percentage) of RSRZ outliers, followed by percent RSRZ outliers for the chain as percentile scores relative to all X-ray entries and entries of similar resolution. The OWAB column contains the minimum, median, 95<sup>th</sup> percentile and maximum values of the occupancy-weighted average B-factor per residue. The column labelled ‘Q< 0.9’ lists the number of (and percentage) of residues with an average occupancy less than 0.9.

Mol	Chain	Analysed	<RSRZ>	#RSRZ>2	OWAB(Å <sup>2</sup> )	Q<0.9
1	A	350/378 (92%)	0.22	18 (5%) 28 30	15, 24, 51, 87	0
2	G	124/127 (97%)	0.34	9 (7%) 15 16	15, 23, 57, 106	0
All	All	474/505 (93%)	0.25	27 (5%) 23 25	15, 24, 52, 106	0

All (27) RSRZ outliers are listed below:

Mol	Chain	Res	Type	RSRZ
2	G	3	VAL	12.0
1	A	65	ILE	8.8
2	G	54	ASN	6.5
2	G	55	GLY	6.4
2	G	53	ARG	6.3
2	G	2	VAL	5.2
1	A	54	PHE	4.8
2	G	52	LEU	4.8
2	G	56	ASN	4.7
1	A	61	THR	4.3
1	A	53	ALA	3.5
1	A	66	LEU	3.3
1	A	39	PRO	3.2
1	A	64	GLY	3.1
2	G	4	GLU	2.9
1	A	209	ILE	2.8
1	A	268	LEU	2.5
1	A	6	VAL	2.5
1	A	248	ILE	2.4
1	A	229[A]	LYS	2.4
1	A	233	GLN	2.4
1	A	235	SER	2.3
1	A	62	LYS	2.3
1	A	272	TRP	2.3

*Continued on next page...*

*Continued from previous page...*

Mol	Chain	Res	Type	RSRZ
2	G	111	LYS	2.3
1	A	234	SER	2.2
1	A	63	ARG	2.1

## 6.2 Non-standard residues in protein, DNA, RNA chains [i](#)

There are no non-standard protein/DNA/RNA residues in this entry.

## 6.3 Carbohydrates [i](#)

There are no carbohydrates in this entry.

## 6.4 Ligands [i](#)

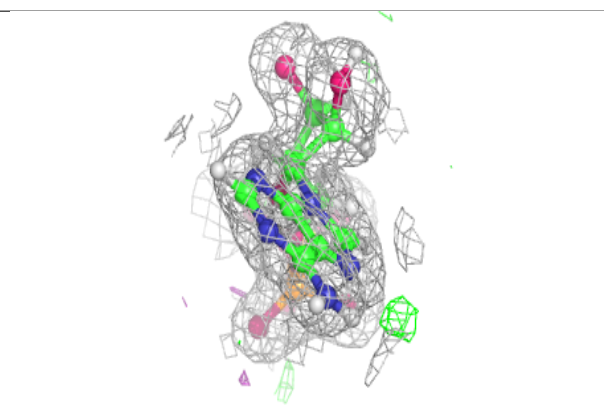
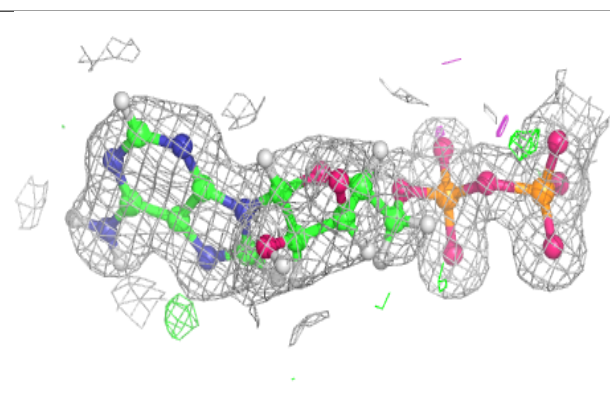
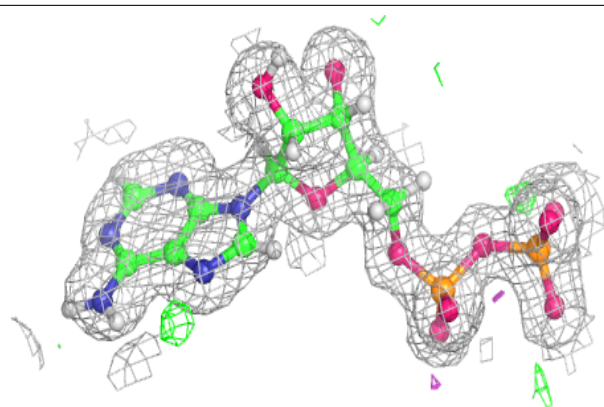
In the following table, the Atoms column lists the number of modelled atoms in the group and the number defined in the chemical component dictionary. The B-factors column lists the minimum, median, 95<sup>th</sup> percentile and maximum values of B factors of atoms in the group. The column labelled 'Q< 0.9' lists the number of atoms with occupancy less than 0.9.

Mol	Type	Chain	Res	Atoms	RSCC	RSR	B-factors(Å <sup>2</sup> )	Q<0.9
7	BTB	A	405[B]	14/14	0.31	0.37	32,53,64,68	33
7	BTB	A	405[A]	14/14	0.31	0.37	35,56,72,74	33
8	PEG	A	406	7/7	0.82	0.20	41,62,82,82	0
9	NA	A	407	1/1	0.93	0.08	33,33,33,33	0
10	CL	A	408	1/1	0.97	0.09	29,29,29,29	0
4	ADP	A	402[B]	27/27	0.98	0.07	13,20,29,32	38
3	ATP	A	401[A]	31/31	0.98	0.08	11,20,27,29	42
11	CA	G	202	1/1	0.98	0.10	22,22,22,22	1
11	CA	G	201	1/1	0.99	0.12	17,17,17,17	0
6	K	A	404	1/1	0.99	0.10	23,23,23,23	1
5	MG	A	403	1/1	0.99	0.09	17,17,17,17	0

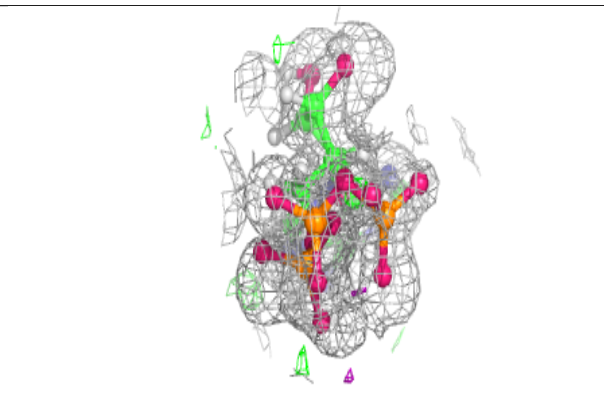
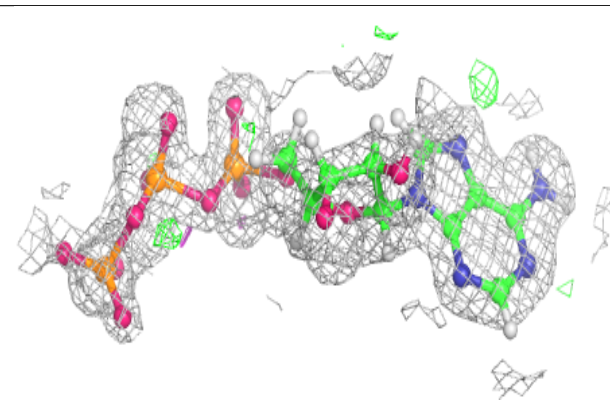
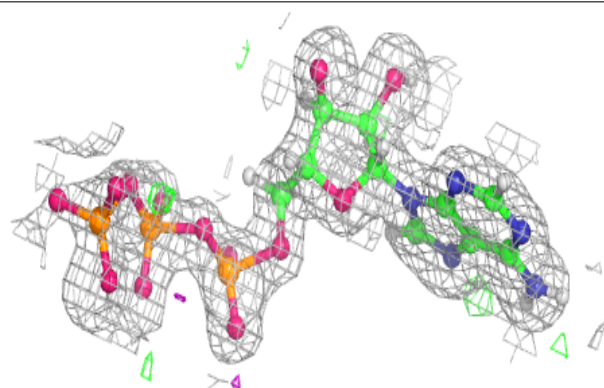
The following is a graphical depiction of the model fit to experimental electron density of all instances of the Ligand of Interest. In addition, ligands with molecular weight > 250 and outliers as shown on the geometry validation Tables will also be included. Each fit is shown from different orientation to approximate a three-dimensional view.

**Electron density around ADP A 402 (B):**

$2mF_o-DF_c$  (at 0.7 rmsd) in gray  
 $mF_o-DF_c$  (at 3 rmsd) in purple (negative)  
and green (positive)

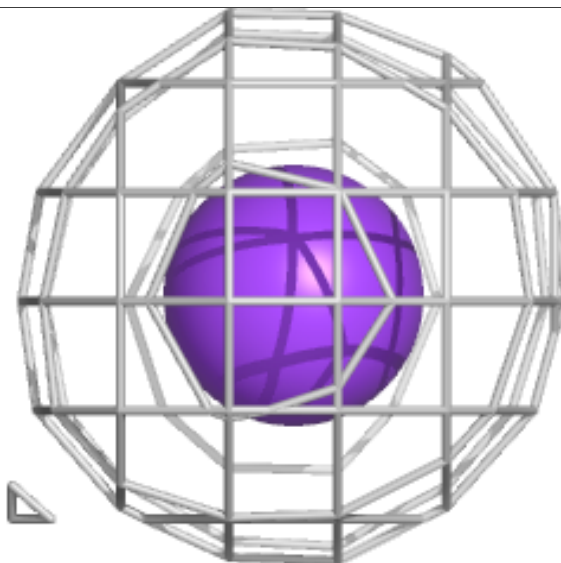
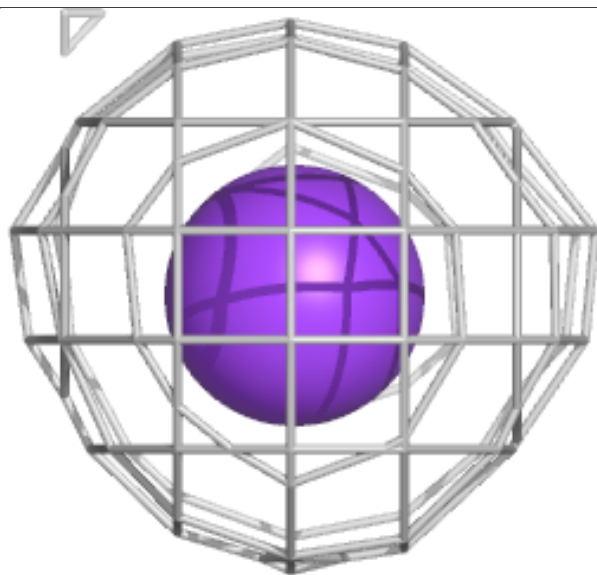
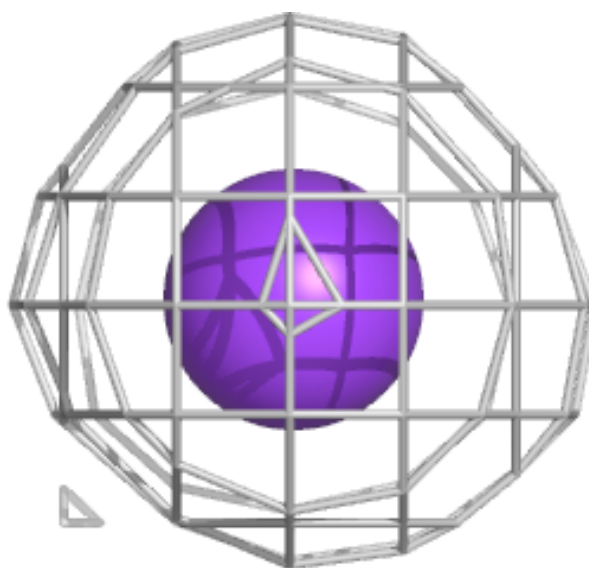
**Electron density around ATP A 401 (A):**

$2mF_o-DF_c$  (at 0.7 rmsd) in gray  
 $mF_o-DF_c$  (at 3 rmsd) in purple (negative)  
and green (positive)



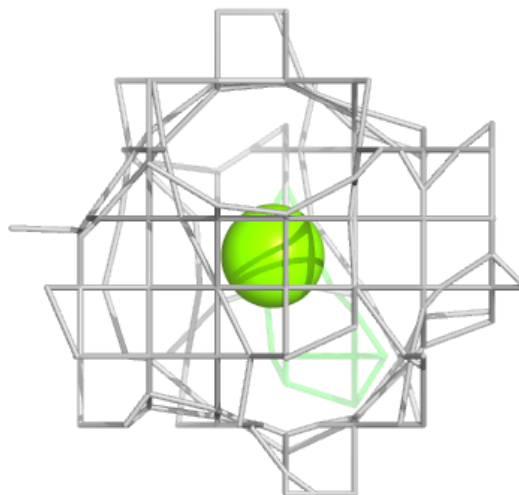
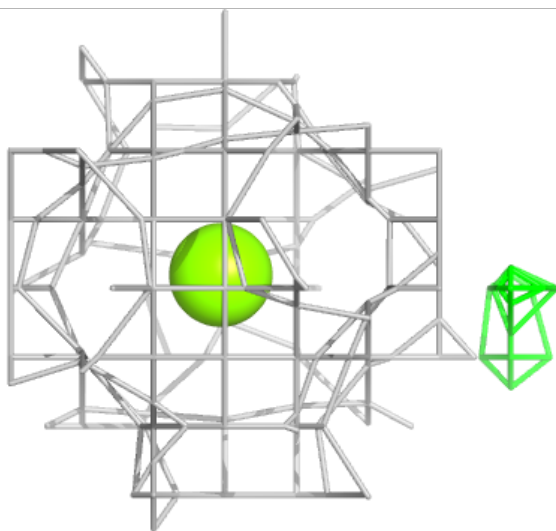
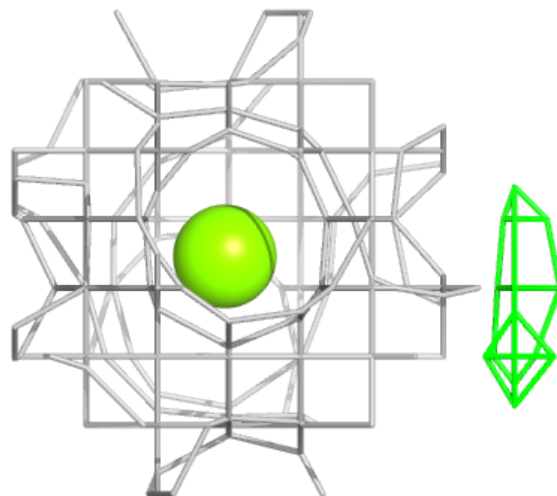
**Electron density around K A 404:**

$2mF_o-DF_c$  (at 0.7 rmsd) in gray  
 $mF_o-DF_c$  (at 3 rmsd) in purple (negative)  
and green (positive)



**Electron density around MG A 403:**

$2mF_o-DF_c$  (at 0.7 rmsd) in gray  
 $mF_o-DF_c$  (at 3 rmsd) in purple (negative)  
and green (positive)



## 6.5 Other polymers ⓘ

There are no such residues in this entry.