



Full wwPDB X-ray Structure Validation Report ⓘ

May 22, 2020 – 01:00 am BST

PDB ID : 2I6Y
Title : Structure and Mechanism of Mycobacterium tuberculosis Salicylate Synthase, MbtI
Authors : Zwahlen, J.; Subramaniapillai, K.; Zhou, R.; Kisker, C.; Tonge, P.J.
Deposited on : 2006-08-29
Resolution : 2.50 Å(reported)

This is a Full wwPDB X-ray Structure Validation Report for a publicly released PDB entry.

We welcome your comments at validation@mail.wwpdb.org

A user guide is available at

<https://www.wwpdb.org/validation/2017/XrayValidationReportHelp>

with specific help available everywhere you see the ⓘ symbol.

The following versions of software and data (see [references ⓘ](#)) were used in the production of this report:

MolProbity	:	4.02b-467
Xtriage (Phenix)	:	1.13
EDS	:	2.11
Percentile statistics	:	20191225.v01 (using entries in the PDB archive December 25th 2019)
Refmac	:	5.8.0158
CCP4	:	7.0.044 (Gargrove)
Ideal geometry (proteins)	:	Engh & Huber (2001)
Ideal geometry (DNA, RNA)	:	Parkinson et al. (1996)
Validation Pipeline (wwPDB-VP)	:	2.11

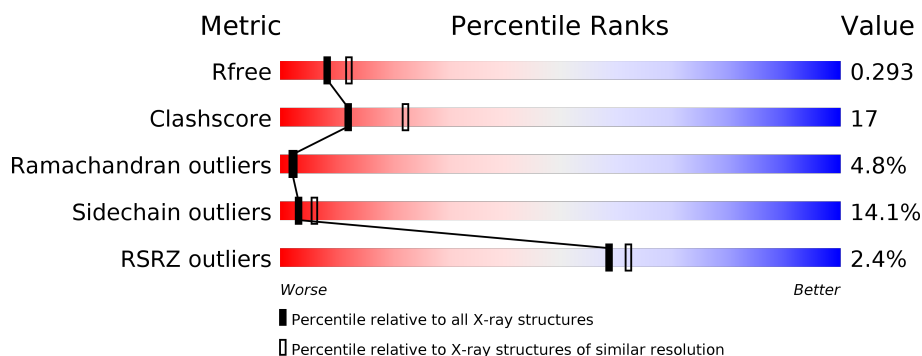
1 Overall quality at a glance

The following experimental techniques were used to determine the structure:

X-RAY DIFFRACTION

The reported resolution of this entry is 2.50 Å.

Percentile scores (ranging between 0-100) for global validation metrics of the entry are shown in the following graphic. The table shows the number of entries on which the scores are based.



Metric	Whole archive (#Entries)	Similar resolution (#Entries, resolution range(Å))
R_{free}	130704	4661 (2.50-2.50)
Clashscore	141614	5346 (2.50-2.50)
Ramachandran outliers	138981	5231 (2.50-2.50)
Sidechain outliers	138945	5233 (2.50-2.50)
RSRZ outliers	127900	4559 (2.50-2.50)

The table below summarises the geometric issues observed across the polymeric chains and their fit to the electron density. The red, orange, yellow and green segments on the lower bar indicate the fraction of residues that contain outliers for ≥ 3 , 2, 1 and 0 types of geometric quality criteria respectively. A grey segment represents the fraction of residues that are not modelled. The numeric value for each fraction is indicated below the corresponding segment, with a dot representing fractions $\leq 5\%$. The upper red bar (where present) indicates the fraction of residues that have poor fit to the electron density. The numeric value is given above the bar.

Mol	Chain	Length	Quality of chain
1	A	470	<div> <div>2%</div> <div>57%</div> <div>26%</div> <div>5%</div> <div>11%</div> </div>

2 Entry composition

There are 2 unique types of molecules in this entry. The entry contains 3089 atoms, of which 0 are hydrogens and 0 are deuteriums.

In the tables below, the ZeroOcc column contains the number of atoms modelled with zero occupancy, the AltConf column contains the number of residues with at least one atom in alternate conformation and the Trace column contains the number of residues modelled with at most 2 atoms.

- Molecule 1 is a protein called Anthranilate synthase component I, putative.

Mol	Chain	Residues	Atoms					ZeroOcc	AltConf	Trace
1	A	419	Total	C	N	O	S	0	0	0
			3086	1941	547	588	10			

There are 21 discrepancies between the modelled and reference sequences:

Chain	Residue	Modelled	Actual	Comment	Reference
A	-19	MET	-	CLONING ARTIFACT	UNP Q7D785
A	-18	GLY	-	CLONING ARTIFACT	UNP Q7D785
A	-17	SER	-	CLONING ARTIFACT	UNP Q7D785
A	-16	SER	-	CLONING ARTIFACT	UNP Q7D785
A	-15	HIS	-	EXPRESSION TAG	UNP Q7D785
A	-14	HIS	-	EXPRESSION TAG	UNP Q7D785
A	-13	HIS	-	EXPRESSION TAG	UNP Q7D785
A	-12	HIS	-	EXPRESSION TAG	UNP Q7D785
A	-11	HIS	-	EXPRESSION TAG	UNP Q7D785
A	-10	HIS	-	EXPRESSION TAG	UNP Q7D785
A	-9	SER	-	CLONING ARTIFACT	UNP Q7D785
A	-8	SER	-	CLONING ARTIFACT	UNP Q7D785
A	-7	GLY	-	CLONING ARTIFACT	UNP Q7D785
A	-6	LEU	-	CLONING ARTIFACT	UNP Q7D785
A	-5	VAL	-	CLONING ARTIFACT	UNP Q7D785
A	-4	PRO	-	CLONING ARTIFACT	UNP Q7D785
A	-3	ARG	-	CLONING ARTIFACT	UNP Q7D785
A	-2	GLY	-	CLONING ARTIFACT	UNP Q7D785
A	-1	SER	-	CLONING ARTIFACT	UNP Q7D785
A	0	HIS	-	CLONING ARTIFACT	UNP Q7D785
A	1	VAL	-	CLONING ARTIFACT	UNP Q7D785

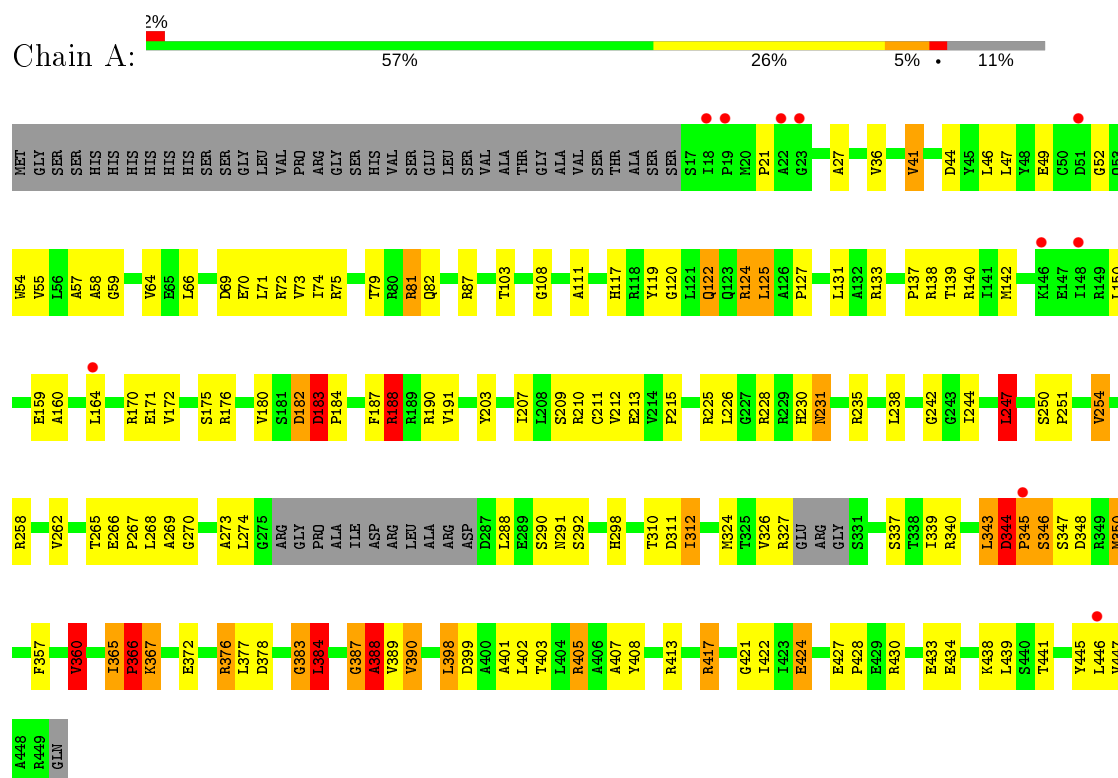
- Molecule 2 is water.

Mol	Chain	Residues	Atoms		ZeroOcc	AltConf
2	A	3	Total	O	0	0
			3	3		

3 Residue-property plots [i](#)

These plots are drawn for all protein, RNA and DNA chains in the entry. The first graphic for a chain summarises the proportions of the various outlier classes displayed in the second graphic. The second graphic shows the sequence view annotated by issues in geometry and electron density. Residues are color-coded according to the number of geometric quality criteria for which they contain at least one outlier: green = 0, yellow = 1, orange = 2 and red = 3 or more. A red dot above a residue indicates a poor fit to the electron density ($RSRZ > 2$). Stretches of 2 or more consecutive residues without any outlier are shown as a green connector. Residues present in the sample, but not in the model, are shown in grey.

- Molecule 1: Anthranilate synthase component I, putative



4 Data and refinement statistics

Property	Value	Source
Space group	C 2 2 21	Depositor
Cell constants a, b, c, α , β , γ	49.21Å 143.60Å 123.76Å 90.00° 90.00° 90.00°	Depositor
Resolution (Å)	25.00 – 2.50 43.57 – 2.50	Depositor EDS
% Data completeness (in resolution range)	99.1 (25.00-2.50) 99.1 (43.57-2.50)	Depositor EDS
R_{merge}	0.06	Depositor
R_{sym}	0.06	Depositor
$\langle I/\sigma(I) \rangle$ ¹	2.27 (at 2.51Å)	Xtriage
Refinement program	REFMAC	Depositor
R, R_{free}	0.232 , 0.294 0.230 , 0.293	Depositor DCC
R_{free} test set	776 reflections (5.01%)	wwPDB-VP
Wilson B-factor (Å ²)	57.5	Xtriage
Anisotropy	0.602	Xtriage
Bulk solvent k_{sol} (e/Å ³), B_{sol} (Å ²)	0.35 , 52.8	EDS
L-test for twinning ²	$\langle L \rangle = 0.49$, $\langle L^2 \rangle = 0.33$	Xtriage
Estimated twinning fraction	No twinning to report.	Xtriage
F_o, F_c correlation	0.94	EDS
Total number of atoms	3089	wwPDB-VP
Average B, all atoms (Å ²)	51.0	wwPDB-VP

Xtriage's analysis on translational NCS is as follows: *The largest off-origin peak in the Patterson function is 5.62% of the height of the origin peak. No significant pseudotranslation is detected.*

¹Intensities estimated from amplitudes.

²Theoretical values of $\langle |L| \rangle$, $\langle L^2 \rangle$ for acentric reflections are 0.5, 0.333 respectively for untwinned datasets, and 0.375, 0.2 for perfectly twinned datasets.

5 Model quality [i](#)

5.1 Standard geometry [i](#)

The Z score for a bond length (or angle) is the number of standard deviations the observed value is removed from the expected value. A bond length (or angle) with $|Z| > 5$ is considered an outlier worth inspection. RMSZ is the root-mean-square of all Z scores of the bond lengths (or angles).

Mol	Chain	Bond lengths		Bond angles	
		RMSZ	$\# Z > 5$	RMSZ	$\# Z > 5$
1	A	0.68	1/3140 (0.0%)	0.86	3/4277 (0.1%)

Chiral center outliers are detected by calculating the chiral volume of a chiral center and verifying if the center is modelled as a planar moiety or with the opposite hand. A planarity outlier is detected by checking planarity of atoms in a peptide group, atoms in a mainchain group or atoms of a sidechain that are expected to be planar.

Mol	Chain	#Chirality outliers	#Planarity outliers
1	A	0	4

All (1) bond length outliers are listed below:

Mol	Chain	Res	Type	Atoms	Z	Observed(Å)	Ideal(Å)
1	A	159	GLU	CD-OE2	8.73	1.35	1.25

All (3) bond angle outliers are listed below:

Mol	Chain	Res	Type	Atoms	Z	Observed(°)	Ideal(°)
1	A	247	LEU	CA-CB-CG	6.78	130.90	115.30
1	A	344	ASP	CB-CG-OD2	5.33	123.10	118.30
1	A	360	VAL	CB-CA-C	-5.28	101.38	111.40

There are no chirality outliers.

All (4) planarity outliers are listed below:

Mol	Chain	Res	Type	Group
1	A	344	ASP	Peptide
1	A	387	GLY	Peptide
1	A	388	ALA	Peptide
1	A	41	VAL	Peptide

5.2 Too-close contacts ⓘ

In the following table, the Non-H and H(model) columns list the number of non-hydrogen atoms and hydrogen atoms in the chain respectively. The H(added) column lists the number of hydrogen atoms added and optimized by MolProbity. The Clashes column lists the number of clashes within the asymmetric unit, whereas Symm-Clashes lists symmetry related clashes.

Mol	Chain	Non-H	H(model)	H(added)	Clashes	Symm-Clashes
1	A	3086	0	2987	104	0
2	A	3	0	0	2	0
All	All	3089	0	2987	104	0

The all-atom clashscore is defined as the number of clashes found per 1000 atoms (including hydrogen atoms). The all-atom clashscore for this structure is 17.

All (104) close contacts within the same asymmetric unit are listed below, sorted by their clash magnitude.

Atom-1	Atom-2	Interatomic distance (Å)	Clash overlap (Å)
1:A:388:ALA:HB2	1:A:403:THR:HG22	1.42	0.98
1:A:388:ALA:HB3	1:A:401:ALA:O	1.65	0.96
1:A:72:ARG:HG2	1:A:81:ARG:HG3	1.53	0.90
1:A:388:ALA:CB	1:A:401:ALA:O	2.22	0.86
1:A:405:ARG:HD3	1:A:438:LYS:O	1.79	0.83
1:A:389:VAL:O	1:A:390:VAL:HB	1.77	0.83
1:A:108:GLY:O	1:A:389:VAL:O	2.02	0.78
1:A:344:ASP:HB3	1:A:345:PRO:C	2.07	0.75
1:A:398:LEU:HD22	1:A:399:ASP:N	2.05	0.71
1:A:387:GLY:O	1:A:388:ALA:HB2	1.88	0.71
1:A:360:VAL:CG2	2:A:453:HOH:O	2.40	0.69
1:A:360:VAL:HG22	2:A:453:HOH:O	1.92	0.69
1:A:36:VAL:HG12	1:A:160:ALA:HB1	1.76	0.67
1:A:366:PRO:O	1:A:367:LYS:CB	2.43	0.66
1:A:213:GLU:OE1	1:A:413:ARG:NH1	2.30	0.65
1:A:390:VAL:HA	1:A:399:ASP:O	1.98	0.64
1:A:108:GLY:HA3	1:A:133:ARG:O	1.97	0.64
1:A:388:ALA:CB	1:A:403:THR:HG22	2.23	0.64
1:A:387:GLY:O	1:A:388:ALA:CB	2.46	0.62
1:A:266:GLU:OE2	1:A:327:ARG:NH1	2.32	0.62
1:A:183:ASP:HB3	1:A:184:PRO:HA	1.80	0.62
1:A:117:HIS:HA	1:A:122:GLN:HG3	1.81	0.60
1:A:268:LEU:HG	1:A:298:HIS:CD2	2.35	0.60
1:A:27:ALA:HB2	1:A:54:TRP:CZ2	2.36	0.60
1:A:183:ASP:CB	1:A:184:PRO:HA	2.32	0.59

Continued on next page...

Continued from previous page...

Atom-1	Atom-2	Interatomic distance (Å)	Clash overlap (Å)
1:A:191:VAL:HG22	1:A:422:ILE:CD1	2.33	0.59
1:A:242:GLY:H	1:A:244:ILE:CG2	2.16	0.59
1:A:235:ARG:O	1:A:251:PRO:HD2	2.03	0.58
1:A:250:SER:N	1:A:251:PRO:HD3	2.18	0.58
1:A:365:ILE:HA	1:A:366:PRO:C	2.24	0.58
1:A:389:VAL:O	1:A:390:VAL:CB	2.48	0.58
1:A:254:VAL:CG1	1:A:269:ALA:HB3	2.35	0.56
1:A:343:LEU:O	1:A:344:ASP:CB	2.54	0.55
1:A:55:VAL:HG22	1:A:142:MET:SD	2.46	0.55
1:A:183:ASP:HB3	1:A:184:PRO:CA	2.37	0.54
1:A:254:VAL:HG13	1:A:269:ALA:HB3	1.90	0.54
1:A:343:LEU:O	1:A:344:ASP:HB2	2.08	0.53
1:A:372:GLU:OE2	1:A:376:ARG:NH1	2.42	0.52
1:A:203:TYR:CB	1:A:366:PRO:HD2	2.38	0.52
1:A:231:ASN:OD1	1:A:441:THR:HB	2.10	0.52
1:A:119:TYR:OH	1:A:367:LYS:HE2	2.11	0.51
1:A:49:GLU:HB2	1:A:54:TRP:CD1	2.46	0.51
1:A:209:SER:OG	1:A:417:ARG:NE	2.41	0.51
1:A:49:GLU:HB2	1:A:54:TRP:NE1	2.25	0.51
1:A:117:HIS:ND1	1:A:122:GLN:HG2	2.25	0.51
1:A:176:ARG:O	1:A:446:LEU:HB2	2.10	0.50
1:A:251:PRO:HA	1:A:402:LEU:O	2.10	0.50
1:A:191:VAL:HG22	1:A:422:ILE:HD11	1.92	0.50
1:A:383:GLY:O	1:A:384:LEU:CB	2.60	0.49
1:A:298:HIS:HE1	1:A:337:SER:OG	1.95	0.49
1:A:366:PRO:O	1:A:367:LYS:HB3	2.12	0.49
1:A:180:VAL:HG12	1:A:212:VAL:HG11	1.95	0.49
1:A:190:ARG:HD2	1:A:377:LEU:O	2.13	0.49
1:A:182:ASP:OD1	1:A:182:ASP:N	2.47	0.48
1:A:64:VAL:HG22	1:A:73:VAL:HG22	1.95	0.48
1:A:348:ASP:OD2	1:A:350:MET:HB2	2.14	0.48
1:A:267:PRO:HD2	1:A:337:SER:O	2.14	0.47
1:A:267:PRO:HG3	1:A:339:ILE:HD12	1.96	0.47
1:A:175:SER:HB3	1:A:226:LEU:CD1	2.43	0.47
1:A:120:GLY:HA2	1:A:122:GLN:OE1	2.14	0.47
1:A:254:VAL:O	1:A:265:THR:HA	2.15	0.47
1:A:258:ARG:HD3	1:A:262:VAL:CG2	2.44	0.47
1:A:312:ILE:HD13	1:A:347:SER:OG	2.15	0.46
1:A:187:PHE:O	1:A:188:ARG:HG2	2.15	0.46
1:A:59:GLY:HA3	1:A:138:ARG:HB2	1.97	0.46
1:A:345:PRO:O	1:A:346:SER:CB	2.63	0.46

Continued on next page...

Continued from previous page...

Atom-1	Atom-2	Interatomic distance (Å)	Clash overlap (Å)
1:A:207:ILE:HG13	1:A:421:GLY:HA2	1.98	0.46
1:A:242:GLY:H	1:A:244:ILE:HG22	1.81	0.46
1:A:388:ALA:HB1	1:A:401:ALA:O	2.11	0.46
1:A:211:CYS:SG	1:A:417:ARG:HG2	2.55	0.46
1:A:430:ARG:O	1:A:433:GLU:HG2	2.15	0.46
1:A:74:ILE:HG23	1:A:79:THR:HG22	1.98	0.46
1:A:247:LEU:HD22	1:A:407:ALA:HB3	1.98	0.46
1:A:250:SER:N	1:A:251:PRO:CD	2.78	0.45
1:A:203:TYR:HB2	1:A:366:PRO:HD2	1.97	0.45
1:A:230:HIS:HB3	1:A:445:TYR:CZ	2.52	0.45
1:A:310:THR:C	1:A:312:ILE:H	2.19	0.45
1:A:288:LEU:O	1:A:292:SER:HB3	2.16	0.45
1:A:57:ALA:HB1	1:A:137:PRO:HB3	2.00	0.44
1:A:226:LEU:HD22	1:A:445:TYR:HB3	2.00	0.43
1:A:59:GLY:HA3	1:A:138:ARG:HD2	2.00	0.43
1:A:172:VAL:HG22	1:A:225:ARG:HH11	1.84	0.43
1:A:111:ALA:HB1	1:A:383:GLY:HA2	2.01	0.43
1:A:427:GLU:O	1:A:428:PRO:C	2.57	0.43
1:A:183:ASP:CB	1:A:184:PRO:CA	2.97	0.43
1:A:191:VAL:HG22	1:A:422:ILE:HD13	1.99	0.43
1:A:212:VAL:HG21	1:A:439:LEU:HD13	2.00	0.43
1:A:366:PRO:O	1:A:367:LYS:HB2	2.19	0.42
1:A:69:ASP:CG	1:A:127:PRO:O	2.58	0.42
1:A:188:ARG:HH11	1:A:188:ARG:HG3	1.84	0.42
1:A:408:TYR:HE1	1:A:417:ARG:HB2	1.84	0.42
1:A:424:GLU:HA	1:A:424:GLU:OE2	2.19	0.42
1:A:58:ALA:HB3	1:A:139:THR:HB	2.01	0.42
1:A:254:VAL:HG12	1:A:269:ALA:HB3	2.02	0.41
1:A:124:ARG:HH11	1:A:124:ARG:HG2	1.86	0.41
1:A:273:ALA:O	1:A:438:LYS:HE2	2.20	0.41
1:A:180:VAL:O	1:A:210:ARG:NH2	2.49	0.41
1:A:44:ASP:O	1:A:58:ALA:O	2.38	0.41
1:A:122:GLN:O	1:A:125:LEU:HB2	2.20	0.41
1:A:383:GLY:O	1:A:384:LEU:HB3	2.21	0.41
1:A:270:GLY:O	1:A:274:LEU:HB2	2.20	0.41
1:A:372:GLU:OE1	1:A:376:ARG:HD3	2.21	0.40
1:A:122:GLN:H	1:A:122:GLN:CD	2.24	0.40
1:A:70:GLU:CD	1:A:81:ARG:HG2	2.42	0.40

There are no symmetry-related clashes.

5.3 Torsion angles [i](#)

5.3.1 Protein backbone [i](#)

In the following table, the Percentiles column shows the percent Ramachandran outliers of the chain as a percentile score with respect to all X-ray entries followed by that with respect to entries of similar resolution.

The Analysed column shows the number of residues for which the backbone conformation was analysed, and the total number of residues.

Mol	Chain	Analysed	Favoured	Allowed	Outliers	Percentiles
1	A	413/470 (88%)	359 (87%)	34 (8%)	20 (5%)	2 2

All (20) Ramachandran outliers are listed below:

Mol	Chain	Res	Type
1	A	183	ASP
1	A	188	ARG
1	A	344	ASP
1	A	345	PRO
1	A	367	LYS
1	A	384	LEU
1	A	447	VAL
1	A	41	VAL
1	A	346	SER
1	A	366	PRO
1	A	383	GLY
1	A	388	ALA
1	A	21	PRO
1	A	87	ARG
1	A	311	ASP
1	A	390	VAL
1	A	215	PRO
1	A	291	ASN
1	A	405	ARG
1	A	52	GLY

5.3.2 Protein sidechains [i](#)

In the following table, the Percentiles column shows the percent sidechain outliers of the chain as a percentile score with respect to all X-ray entries followed by that with respect to entries of similar resolution.

The Analysed column shows the number of residues for which the sidechain conformation was

analysed, and the total number of residues.

Mol	Chain	Analysed	Rotameric	Outliers	Percentiles
1	A	304/375 (81%)	261 (86%)	43 (14%)	3 6

All (43) residues with a non-rotameric sidechain are listed below:

Mol	Chain	Res	Type
1	A	46	LEU
1	A	47	LEU
1	A	66	LEU
1	A	71	LEU
1	A	75	ARG
1	A	81	ARG
1	A	82	GLN
1	A	103	THR
1	A	122	GLN
1	A	124	ARG
1	A	125	LEU
1	A	131	LEU
1	A	140	ARG
1	A	150	LEU
1	A	164	LEU
1	A	170	ARG
1	A	171	GLU
1	A	182	ASP
1	A	183	ASP
1	A	188	ARG
1	A	228	ARG
1	A	231	ASN
1	A	238	LEU
1	A	247	LEU
1	A	254	VAL
1	A	290	SER
1	A	312	ILE
1	A	324	MET
1	A	326	VAL
1	A	340	ARG
1	A	343	LEU
1	A	350	MET
1	A	357	PHE
1	A	360	VAL
1	A	365	ILE
1	A	366	PRO

Continued on next page...

Continued from previous page...

Mol	Chain	Res	Type
1	A	376	ARG
1	A	378	ASP
1	A	384	LEU
1	A	398	LEU
1	A	417	ARG
1	A	424	GLU
1	A	434	GLU

Some sidechains can be flipped to improve hydrogen bonding and reduce clashes. All (4) such sidechains are listed below:

Mol	Chain	Res	Type
1	A	61	GLN
1	A	82	GLN
1	A	240	GLN
1	A	298	HIS

5.3.3 RNA [i](#)

There are no RNA molecules in this entry.

5.4 Non-standard residues in protein, DNA, RNA chains [i](#)

There are no non-standard protein/DNA/RNA residues in this entry.

5.5 Carbohydrates [i](#)

There are no carbohydrates in this entry.

5.6 Ligand geometry [i](#)

There are no ligands in this entry.

5.7 Other polymers [i](#)

There are no such residues in this entry.

5.8 Polymer linkage issues ⓘ

There are no chain breaks in this entry.

6 Fit of model and data [i](#)

6.1 Protein, DNA and RNA chains [i](#)

In the following table, the column labelled ‘#RSRZ> 2’ contains the number (and percentage) of RSRZ outliers, followed by percent RSRZ outliers for the chain as percentile scores relative to all X-ray entries and entries of similar resolution. The OWAB column contains the minimum, median, 95th percentile and maximum values of the occupancy-weighted average B-factor per residue. The column labelled ‘Q< 0.9’ lists the number of (and percentage) of residues with an average occupancy less than 0.9.

Mol	Chain	Analysed	<RSRZ>	#RSRZ>2	OWAB(Å ²)	Q<0.9
1	A	419/470 (89%)	0.15	10 (2%) 59 62	39, 51, 63, 70	0

All (10) RSRZ outliers are listed below:

Mol	Chain	Res	Type	RSRZ
1	A	345	PRO	4.7
1	A	18	ILE	4.1
1	A	19	PRO	3.4
1	A	23	GLY	3.3
1	A	164	LEU	2.7
1	A	446	LEU	2.5
1	A	51	ASP	2.3
1	A	148	ILE	2.2
1	A	22	ALA	2.1
1	A	146	LYS	2.1

6.2 Non-standard residues in protein, DNA, RNA chains [i](#)

There are no non-standard protein/DNA/RNA residues in this entry.

6.3 Carbohydrates [i](#)

There are no carbohydrates in this entry.

6.4 Ligands [i](#)

There are no ligands in this entry.

6.5 Other polymers [i](#)

There are no such residues in this entry.