



Full wwPDB X-ray Structure Validation Report ⓘ

May 21, 2020 – 08:20 pm BST

PDB ID : 3I94
Title : Crystal structure of PcyA-biliverdin XIII alpha complex
Authors : Hagiwara, Y.; Sugishima, M.; Fukuyama, K.
Deposited on : 2009-07-10
Resolution : 1.04 Å(reported)

This is a Full wwPDB X-ray Structure Validation Report for a publicly released PDB entry.

We welcome your comments at validation@mail.wwpdb.org

A user guide is available at

<https://www.wwpdb.org/validation/2017/XrayValidationReportHelp>

with specific help available everywhere you see the ⓘ symbol.

The following versions of software and data (see [references ⓘ](#)) were used in the production of this report:

MolProbity : 4.02b-467
Mogul : 1.8.5 (274361), CSD as541be (2020)
Xtriage (Phenix) : 1.13
EDS : 2.11
buster-report : 1.1.7 (2018)
Percentile statistics : 20191225.v01 (using entries in the PDB archive December 25th 2019)
Refmac : 5.8.0158
CCP4 : 7.0.044 (Gargrove)
Ideal geometry (proteins) : Engh & Huber (2001)
Ideal geometry (DNA, RNA) : Parkinson et al. (1996)
Validation Pipeline (wwPDB-VP) : 2.11

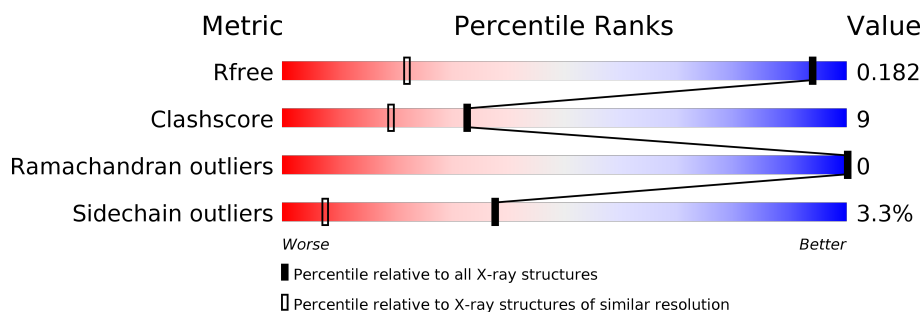
1 Overall quality at a glance

The following experimental techniques were used to determine the structure:

X-RAY DIFFRACTION

The reported resolution of this entry is 1.04 Å.

Percentile scores (ranging between 0-100) for global validation metrics of the entry are shown in the following graphic. The table shows the number of entries on which the scores are based.



Metric	Whole archive (#Entries)	Similar resolution (#Entries, resolution range(Å))
R_{free}	130704	1596 (1.10-0.98)
Clashscore	141614	1677 (1.10-0.98)
Ramachandran outliers	138981	1591 (1.10-0.98)
Sidechain outliers	138945	1589 (1.10-0.98)

The table below summarises the geometric issues observed across the polymeric chains and their fit to the electron density. The red, orange, yellow and green segments on the lower bar indicate the fraction of residues that contain outliers for ≥ 3 , 2, 1 and 0 types of geometric quality criteria respectively. A grey segment represents the fraction of residues that are not modelled. The numeric value for each fraction is indicated below the corresponding segment, with a dot representing fractions $\leq 5\%$.

Mol	Chain	Length	Quality of chain
1	A	248	

The following table lists non-polymeric compounds, carbohydrate monomers and non-standard residues in protein, DNA, RNA chains that are outliers for geometric or electron-density-fit criteria:

Mol	Type	Chain	Res	Chirality	Geometry	Clashes	Electron density
3	SO4	A	6610	-	X	X	-

2 Entry composition [i](#)

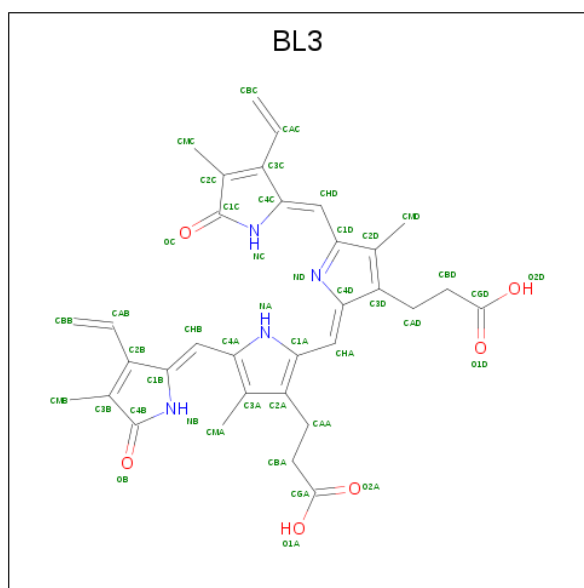
There are 4 unique types of molecules in this entry. The entry contains 3895 atoms, of which 1360 are hydrogens and 0 are deuteriums.

In the tables below, the ZeroOcc column contains the number of atoms modelled with zero occupancy, the AltConf column contains the number of residues with at least one atom in alternate conformation and the Trace column contains the number of residues modelled with at most 2 atoms.

- Molecule 1 is a protein called Phycocyanobilin:ferredoxin oxidoreductase.

Mol	Chain	Residues	Atoms						ZeroOcc	AltConf	Trace
			Total	C	H	N	O	S			
1	A	243	3471	1343	1360	361	392	15	0	37	0

- Molecule 2 is 3-[2-[(Z)-[3-(2-carboxyethyl)-5-[(Z)-(3-ethenyl-4-methyl-5-oxo-pyrrol-2-ylidene)methyl]-4-methyl-pyrrol-2-ylidene]methyl]-5-[(Z)-(3-ethenyl-4-methyl-5-oxo-pyrrol-2-ylidene)methyl]-4-methyl-1H-pyrrol-3-yl]propanoic acid (three-letter code: BL3) (formula: C₃₃H₃₄N₄O₆).



Mol	Chain	Residues	Atoms				ZeroOcc	AltConf
			Total	C	N	O		
2	A	1	43	33	4	6	0	0

- Molecule 3 is SULFATE ION (three-letter code: SO4) (formula: O₄S).



Mol	Chain	Residues	Atoms			ZeroOcc	AltConf
3	A	1	Total	O	S	0	0
			5	4	1		

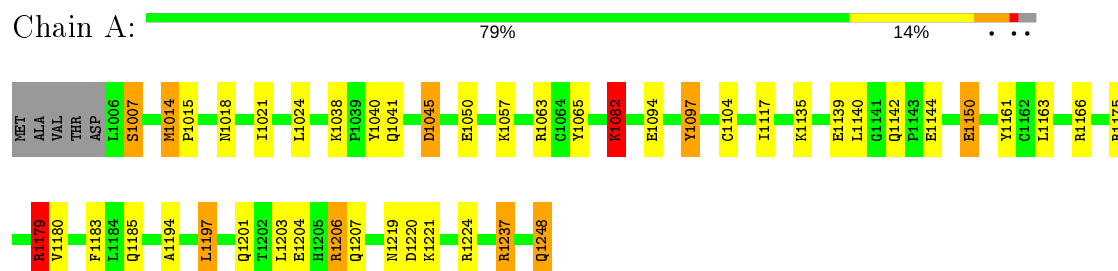
- Molecule 4 is water.

Mol	Chain	Residues	Atoms		ZeroOcc	AltConf
4	A	375	Total	O	0	1
			376	376		

3 Residue-property plots [i](#)

These plots are drawn for all protein, RNA and DNA chains in the entry. The first graphic for a chain summarises the proportions of the various outlier classes displayed in the second graphic. The second graphic shows the sequence view annotated by issues in geometry. Residues are color-coded according to the number of geometric quality criteria for which they contain at least one outlier: green = 0, yellow = 1, orange = 2 and red = 3 or more. Stretches of 2 or more consecutive residues without any outlier are shown as a green connector. Residues present in the sample, but not in the model, are shown in grey.

- Molecule 1: Phycocyanobilin:ferredoxin oxidoreductase



4 Data and refinement statistics

Property	Value	Source
Space group	P 21 21 2	Depositor
Cell constants a, b, c, α , β , γ	70.78Å 94.80Å 42.65Å 90.00° 90.00° 90.00°	Depositor
Resolution (Å)	28.94 – 1.04 28.94 – 1.05	Depositor EDS
% Data completeness (in resolution range)	(Not available) (28.94-1.04) 98.7 (28.94-1.05)	Depositor EDS
R_{merge}	0.05	Depositor
R_{sym}	(Not available)	Depositor
$\langle I/\sigma(I) \rangle$ ¹	5.01 (at 1.05Å)	Xtriage
Refinement program	SHELX, SHELXL	Depositor
R, R_{free}	0.125 , 0.148 0.175 , 0.182	Depositor DCC
R_{free} test set	6743 reflections (5.03%)	wwPDB-VP
Wilson B-factor (Å ²)	12.5	Xtriage
Anisotropy	0.088	Xtriage
Bulk solvent k_{sol} (e/Å ³), B_{sol} (Å ²)	0.39 , 59.2	EDS
L-test for twinning ²	$\langle L \rangle = 0.49$, $\langle L^2 \rangle = 0.32$	Xtriage
Estimated twinning fraction	No twinning to report.	Xtriage
F_o, F_c correlation	0.98	EDS
Total number of atoms	3895	wwPDB-VP
Average B, all atoms (Å ²)	19.0	wwPDB-VP

Xtriage's analysis on translational NCS is as follows: *The largest off-origin peak in the Patterson function is 9.25% of the height of the origin peak. No significant pseudotranslation is detected.*

¹Intensities estimated from amplitudes.

²Theoretical values of $\langle |L| \rangle$, $\langle L^2 \rangle$ for acentric reflections are 0.5, 0.333 respectively for untwinned datasets, and 0.375, 0.2 for perfectly twinned datasets.

5 Model quality

5.1 Standard geometry

Bond lengths and bond angles in the following residue types are not validated in this section: SO4, BL3

The Z score for a bond length (or angle) is the number of standard deviations the observed value is removed from the expected value. A bond length (or angle) with $|Z| > 5$ is considered an outlier worth inspection. RMSZ is the root-mean-square of all Z scores of the bond lengths (or angles).

Mol	Chain	Bond lengths		Bond angles	
		RMSZ	# Z >5	RMSZ	# Z >5
1	A	0.80	0/2296	1.50	41/3103 (1.3%)

Chiral center outliers are detected by calculating the chiral volume of a chiral center and verifying if the center is modelled as a planar moiety or with the opposite hand. A planarity outlier is detected by checking planarity of atoms in a peptide group, atoms in a mainchain group or atoms of a sidechain that are expected to be planar.

Mol	Chain	#Chirality outliers	#Planarity outliers
1	A	0	1

There are no bond length outliers.

All (41) bond angle outliers are listed below:

Mol	Chain	Res	Type	Atoms	Z	Observed(°)	Ideal(°)
1	A	1206	ARG	CD-NE-CZ	21.16	153.22	123.60
1	A	1206	ARG	NE-CZ-NH2	16.00	128.30	120.30
1	A	1166	ARG	NE-CZ-NH1	-13.51	113.55	120.30
1	A	1179[A]	ARG	NE-CZ-NH1	12.63	126.61	120.30
1	A	1179[B]	ARG	NE-CZ-NH1	12.63	126.61	120.30
1	A	1166	ARG	NE-CZ-NH2	12.52	126.56	120.30
1	A	1237[A]	ARG	NE-CZ-NH1	-9.45	115.58	120.30
1	A	1237[B]	ARG	NE-CZ-NH1	-9.45	115.58	120.30
1	A	1065	TYR	CG-CD2-CE2	9.15	128.62	121.30
1	A	1014	MET	CG-SD-CE	-8.79	86.14	100.20
1	A	1104[A]	CYS	CA-CB-SG	8.08	128.54	114.00
1	A	1104[B]	CYS	CA-CB-SG	8.08	128.54	114.00
1	A	1063[A]	ARG	NE-CZ-NH1	7.89	124.25	120.30
1	A	1063[B]	ARG	NE-CZ-NH1	7.89	124.25	120.30
1	A	1175	ARG	NE-CZ-NH2	-7.82	116.39	120.30
1	A	1183	PHE	CB-CG-CD1	7.33	125.93	120.80

Continued on next page...

Continued from previous page...

Mol	Chain	Res	Type	Atoms	Z	Observed(°)	Ideal(°)
1	A	1040	TYR	CB-CG-CD2	7.04	125.23	121.00
1	A	1082	LYS	C-N-CA	-7.03	107.55	122.30
1	A	1065	TYR	CZ-CE2-CD2	-6.74	113.73	119.80
1	A	1135	LYS	CA-CB-CG	6.64	128.02	113.40
1	A	1045[A]	ASP	CB-CG-OD1	-6.50	112.45	118.30
1	A	1045[B]	ASP	CB-CG-OD1	-6.50	112.45	118.30
1	A	1150	GLU	OE1-CD-OE2	-6.32	115.72	123.30
1	A	1007	SER	N-CA-CB	6.21	119.82	110.50
1	A	1097	TYR	CG-CD2-CE2	6.09	126.17	121.30
1	A	1204	GLU	OE1-CD-OE2	-6.02	116.08	123.30
1	A	1063[A]	ARG	NE-CZ-NH2	-5.69	117.46	120.30
1	A	1063[B]	ARG	NE-CZ-NH2	-5.69	117.46	120.30
1	A	1179[A]	ARG	NH1-CZ-NH2	-5.59	113.25	119.40
1	A	1179[B]	ARG	NH1-CZ-NH2	-5.59	113.25	119.40
1	A	1237[A]	ARG	NH1-CZ-NH2	5.59	125.55	119.40
1	A	1237[B]	ARG	NH1-CZ-NH2	5.59	125.55	119.40
1	A	1161[A]	TYR	CG-CD1-CE1	5.56	125.75	121.30
1	A	1161[B]	TYR	CG-CD1-CE1	5.56	125.75	121.30
1	A	1206	ARG	NE-CZ-NH1	-5.41	117.60	120.30
1	A	1220[A]	ASP	CB-CG-OD2	5.39	123.16	118.30
1	A	1220[B]	ASP	CB-CG-OD2	5.39	123.16	118.30
1	A	1224	ARG	NE-CZ-NH1	5.35	122.97	120.30
1	A	1097	TYR	CB-CG-CD2	5.32	124.19	121.00
1	A	1197[A]	LEU	C-N-CA	5.24	134.79	121.70
1	A	1197[B]	LEU	C-N-CA	5.24	134.79	121.70

There are no chirality outliers.

All (1) planarity outliers are listed below:

Mol	Chain	Res	Type	Group
1	A	1082	LYS	Peptide

5.2 Too-close contacts ⓘ

In the following table, the Non-H and H(model) columns list the number of non-hydrogen atoms and hydrogen atoms in the chain respectively. The H(added) column lists the number of hydrogen atoms added and optimized by MolProbity. The Clashes column lists the number of clashes within the asymmetric unit, whereas Symm-Clashes lists symmetry related clashes.

Mol	Chain	Non-H	H(model)	H(added)	Clashes	Symm-Clashes
1	A	2111	1360	2088	36	0

Continued on next page...

Continued from previous page...

Mol	Chain	Non-H	H(model)	H(added)	Clashes	Symm-Clashes
2	A	43	0	32	1	0
3	A	5	0	0	3	0
4	A	376	0	0	12	0
All	All	2535	1360	2120	38	0

The all-atom clashscore is defined as the number of clashes found per 1000 atoms (including hydrogen atoms). The all-atom clashscore for this structure is 9.

All (38) close contacts within the same asymmetric unit are listed below, sorted by their clash magnitude.

Atom-1	Atom-2	Interatomic distance (Å)	Clash overlap (Å)
1:A:1057[B]:LYS:HE3	4:A:9182:HOH:O	1.35	1.24
3:A:6610:SO4:S	3:A:6610:SO4:O1	1.99	1.19
1:A:1094[B]:GLU:HG3	4:A:9089:HOH:O	1.82	0.79
1:A:1057[B]:LYS:HB2	1:A:1057[B]:LYS:HZ3	1.49	0.78
1:A:1057[B]:LYS:HD3	3:A:6610:SO4:O2	1.87	0.75
1:A:1024[B]:LEU:HD11	1:A:1180:VAL:HG11	1.70	0.73
1:A:1082:LYS:NZ	1:A:1082:LYS:H	1.85	0.73
1:A:1179[A]:ARG:NH2	4:A:9277:HOH:O	2.13	0.67
1:A:1082:LYS:HZ1	1:A:1082:LYS:H	1.45	0.62
1:A:1197[A]:LEU:HB3	1:A:1201:GLN:NE2	2.16	0.60
1:A:1248:GLN:HA	4:A:9345:HOH:O	2.03	0.58
1:A:1197[A]:LEU:HB3	1:A:1201:GLN:HE21	1.69	0.57
1:A:1057[B]:LYS:NZ	1:A:1057[B]:LYS:HB2	2.19	0.57
2:A:2130:BL3:HMC	2:A:2130:BL3:HBC	1.86	0.57
1:A:1139:GLU:HG2	4:A:9253:HOH:O	2.05	0.56
1:A:1207[B]:GLN:HG2	4:A:9128:HOH:O	2.06	0.55
1:A:1050:GLU:OE2	1:A:1057[B]:LYS:HG3	2.05	0.55
1:A:1140:LEU:HD13	1:A:1179[A]:ARG:CD	2.41	0.50
1:A:1140:LEU:HB3	1:A:1179[A]:ARG:CZ	2.42	0.50
1:A:1150:GLU:HG2	4:A:9252:HOH:O	2.14	0.47
1:A:1057[B]:LYS:CD	3:A:6610:SO4:O2	2.60	0.46
1:A:1206:ARG:HD3	1:A:1248:GLN:O	2.16	0.46
1:A:1041:GLN:NE2	1:A:1045[B]:ASP:OD2	2.48	0.46
1:A:1117:ILE:HA	1:A:1163:LEU:O	2.18	0.44
1:A:1185[A]:GLN:NE2	4:A:9127:HOH:O	2.49	0.44
1:A:1237[B]:ARG:NH2	4:A:9124:HOH:O	2.47	0.43
1:A:1203:LEU:O	1:A:1207[B]:GLN:HG3	2.18	0.42
1:A:1221[B]:LYS:NZ	4:A:9142:HOH:O	2.50	0.42
1:A:1097:TYR:HB3	1:A:1194[B]:ALA:HB1	2.01	0.42
1:A:1038[A]:LYS:NZ	4:A:9104:HOH:O	2.48	0.41

Continued on next page...

Continued from previous page...

Atom-1	Atom-2	Interatomic distance (Å)	Clash overlap (Å)
1:A:1018:ASN:HD22	1:A:1021:ILE:H	1.69	0.41
1:A:1194[B]:ALA:HB3	4:A:9348[B]:HOH:O	2.19	0.41
1:A:1248:GLN:OXT	1:A:1248:GLN:NE2	2.54	0.41
1:A:1140:LEU:HD13	1:A:1179[A]:ARG:NE	2.35	0.40
1:A:1014:MET:HB3	1:A:1015:PRO:HD3	2.04	0.40

There are no symmetry-related clashes.

5.3 Torsion angles [i](#)

5.3.1 Protein backbone [i](#)

In the following table, the Percentiles column shows the percent Ramachandran outliers of the chain as a percentile score with respect to all X-ray entries followed by that with respect to entries of similar resolution.

The Analysed column shows the number of residues for which the backbone conformation was analysed, and the total number of residues.

Mol	Chain	Analysed	Favoured	Allowed	Outliers	Percentiles	
1	A	278/248 (112%)	271 (98%)	7 (2%)	0	100	100

There are no Ramachandran outliers to report.

5.3.2 Protein sidechains [i](#)

In the following table, the Percentiles column shows the percent sidechain outliers of the chain as a percentile score with respect to all X-ray entries followed by that with respect to entries of similar resolution.

The Analysed column shows the number of residues for which the sidechain conformation was analysed, and the total number of residues.

Mol	Chain	Analysed	Rotameric	Outliers	Percentiles	
1	A	247/216 (114%)	239 (97%)	8 (3%)	39	8

All (8) residues with a non-rotameric sidechain are listed below:

Mol	Chain	Res	Type
1	A	1007	SER

Continued on next page...

Continued from previous page...

Mol	Chain	Res	Type
1	A	1082	LYS
1	A	1142	GLN
1	A	1144	GLU
1	A	1179[A]	ARG
1	A	1179[B]	ARG
1	A	1219	ASN
1	A	1248	GLN

Some sidechains can be flipped to improve hydrogen bonding and reduce clashes. All (7) such sidechains are listed below:

Mol	Chain	Res	Type
1	A	1018	ASN
1	A	1023	GLN
1	A	1041	GLN
1	A	1178	GLN
1	A	1201	GLN
1	A	1219	ASN
1	A	1248	GLN

5.3.3 RNA ⓘ

There are no RNA molecules in this entry.

5.4 Non-standard residues in protein, DNA, RNA chains ⓘ

There are no non-standard protein/DNA/RNA residues in this entry.

5.5 Carbohydrates ⓘ

There are no carbohydrates in this entry.

5.6 Ligand geometry ⓘ

2 ligands are modelled in this entry.

In the following table, the Counts columns list the number of bonds (or angles) for which Mogul statistics could be retrieved, the number of bonds (or angles) that are observed in the model and the number of bonds (or angles) that are defined in the Chemical Component Dictionary. The Link column lists molecule types, if any, to which the group is linked. The Z score for a bond

length (or angle) is the number of standard deviations the observed value is removed from the expected value. A bond length (or angle) with $|Z| > 2$ is considered an outlier worth inspection. RMSZ is the root-mean-square of all Z scores of the bond lengths (or angles).

Mol	Type	Chain	Res	Link	Bond lengths			Bond angles		
					Counts	RMSZ	# Z > 2	Counts	RMSZ	# Z > 2
3	SO4	A	6610	-	4,4,4	5.30	3 (75%)	6,6,6	2.23	2 (33%)
2	BL3	A	2130	-	36,46,46	2.06	7 (19%)	47,67,67	1.45	4 (8%)

In the following table, the Chirals column lists the number of chiral outliers, the number of chiral centers analysed, the number of these observed in the model and the number defined in the Chemical Component Dictionary. Similar counts are reported in the Torsion and Rings columns. '-' means no outliers of that kind were identified.

Mol	Type	Chain	Res	Link	Chirals	Torsions	Rings
2	BL3	A	2130	-	-	0/22/74/74	0/4/4/4

All (10) bond length outliers are listed below:

Mol	Chain	Res	Type	Atoms	Z	Observed(Å)	Ideal(Å)
3	A	6610	SO4	O1-S	9.87	1.99	1.46
2	A	2130	BL3	CHA-C4D	7.74	1.41	1.35
2	A	2130	BL3	C4D-C3D	-5.62	1.36	1.45
2	A	2130	BL3	CAC-C3C	-3.29	1.38	1.47
3	A	6610	SO4	O4-S	-2.80	1.24	1.47
3	A	6610	SO4	O3-S	-2.65	1.26	1.47
2	A	2130	BL3	CHB-C1B	2.53	1.39	1.34
2	A	2130	BL3	C4B-C3B	-2.47	1.41	1.47
2	A	2130	BL3	C1D-ND	2.36	1.42	1.36
2	A	2130	BL3	OC-C1C	2.12	1.27	1.23

All (6) bond angle outliers are listed below:

Mol	Chain	Res	Type	Atoms	Z	Observed(°)	Ideal(°)
2	A	2130	BL3	C1A-CHA-C4D	6.51	136.59	128.81
3	A	6610	SO4	O4-S-O3	-4.04	91.83	109.06
2	A	2130	BL3	C4D-C3D-C2D	3.14	110.26	106.78
2	A	2130	BL3	C1B-NB-C4B	-2.56	107.41	110.67
3	A	6610	SO4	O3-S-O1	2.50	122.34	109.31
2	A	2130	BL3	CAA-CBA-CGA	2.05	116.12	112.67

There are no chirality outliers.

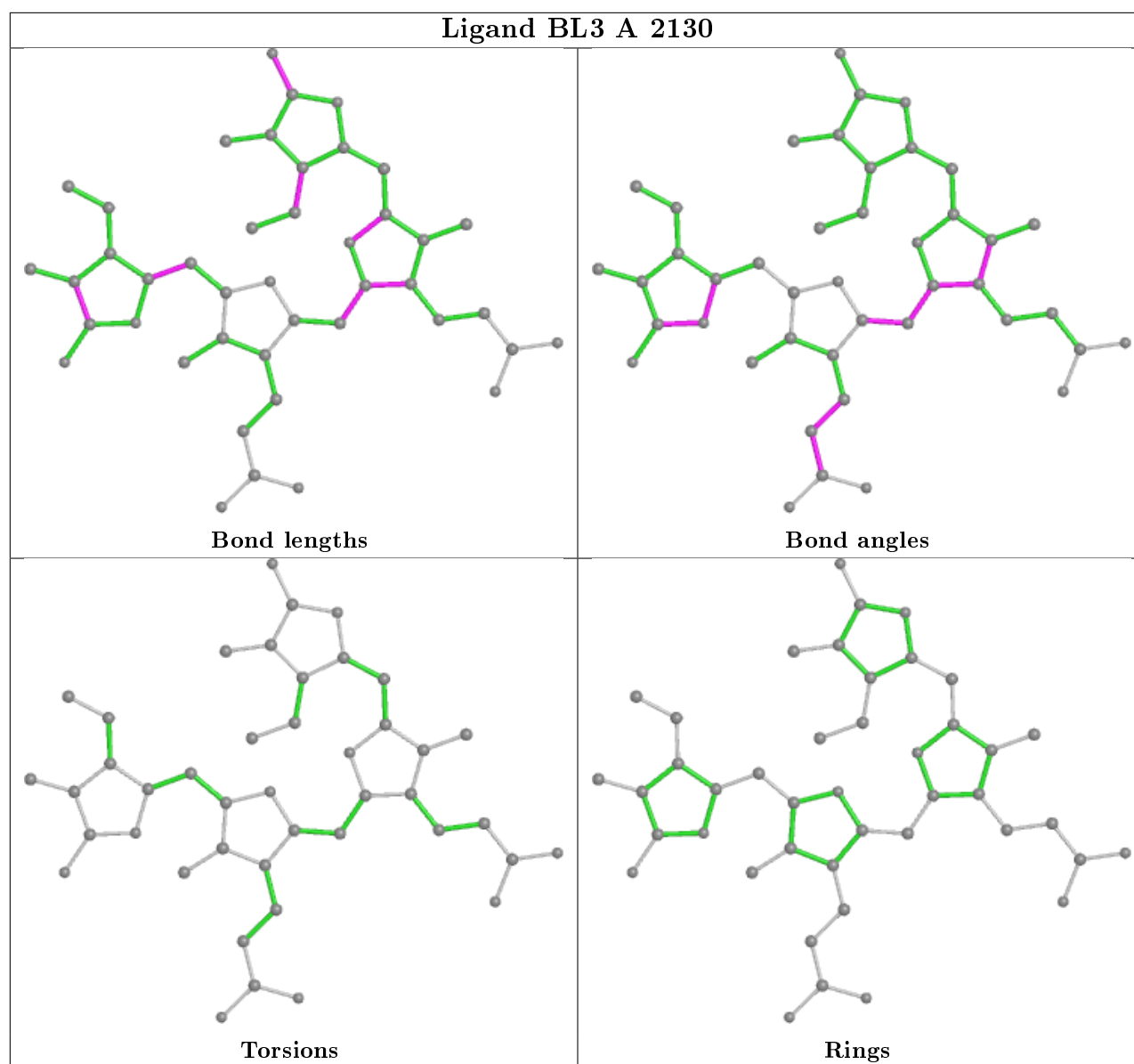
There are no torsion outliers.

There are no ring outliers.

2 monomers are involved in 4 short contacts:

Mol	Chain	Res	Type	Clashes	Symm-Clashes
3	A	6610	SO4	3	0
2	A	2130	BL3	1	0

The following is a two-dimensional graphical depiction of Mogul quality analysis of bond lengths, bond angles, torsion angles, and ring geometry for all instances of the Ligand of Interest. In addition, ligands with molecular weight > 250 and outliers as shown on the validation Tables will also be included. For torsion angles, if less than 5% of the Mogul distribution of torsion angles is within 10 degrees of the torsion angle in question, then that torsion angle is considered an outlier. Any bond that is central to one or more torsion angles identified as an outlier by Mogul will be highlighted in the graph. For rings, the root-mean-square deviation (RMSD) between the ring in question and similar rings identified by Mogul is calculated over all ring torsion angles. If the average RMSD is greater than 60 degrees and the minimal RMSD between the ring in question and any Mogul-identified rings is also greater than 60 degrees, then that ring is considered an outlier. The outliers are highlighted in purple. The color gray indicates Mogul did not find sufficient equivalents in the CSD to analyse the geometry.



5.7 Other polymers [i](#)

There are no such residues in this entry.

5.8 Polymer linkage issues [i](#)

There are no chain breaks in this entry.

6 Fit of model and data

6.1 Protein, DNA and RNA chains

Unable to reproduce the depositors R factor - this section is therefore empty.

6.2 Non-standard residues in protein, DNA, RNA chains

Unable to reproduce the depositors R factor - this section is therefore empty.

6.3 Carbohydrates

Unable to reproduce the depositors R factor - this section is therefore empty.

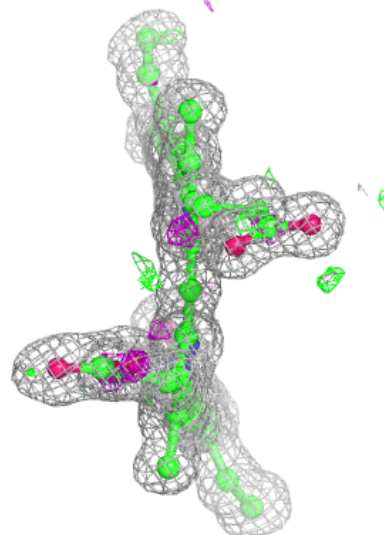
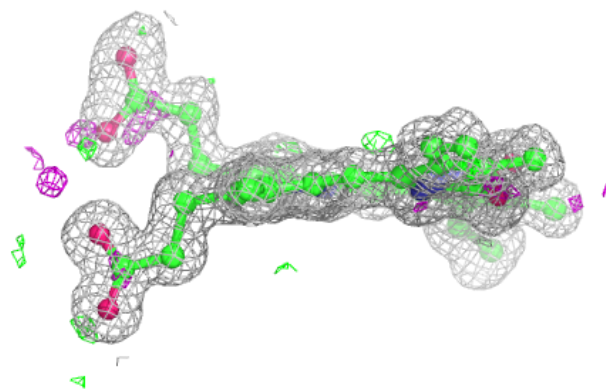
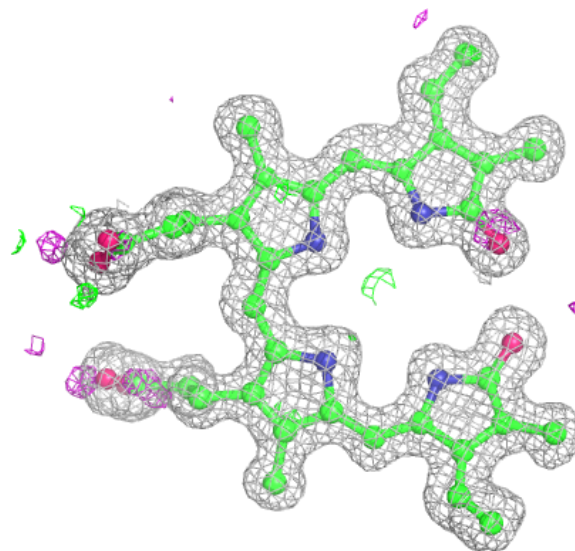
6.4 Ligands

Unable to reproduce the depositors R factor - this section is therefore empty.

The following is a graphical depiction of the model fit to experimental electron density of all instances of the Ligand of Interest. In addition, ligands with molecular weight > 250 and outliers as shown on the geometry validation Tables will also be included. Each fit is shown from different orientation to approximate a three-dimensional view.

Electron density around BL3 A 2130:

$2mF_o-DF_c$ (at 0.7 rmsd) in gray
 mF_o-DF_c (at 3 rmsd) in purple (negative)
and green (positive)



6.5 Other polymers [i](#)

Unable to reproduce the depositors R factor - this section is therefore empty.