



# Full wwPDB X-ray Structure Validation Report ⓘ

May 17, 2020 – 10:12 pm BST

PDB ID : 1ICT  
Title : MONOCLINIC FORM OF HUMAN TRANSTHYRETIN COMPLEXED  
WITH THYROXINE (T4)  
Authors : Wojtczak, A.; Neumann, P.; Cody, V.  
Deposited on : 2001-04-02  
Resolution : 3.00 Å(reported)

This is a Full wwPDB X-ray Structure Validation Report for a publicly released PDB entry.

We welcome your comments at [validation@mail.wwpdb.org](mailto:validation@mail.wwpdb.org)

A user guide is available at

<https://www.wwpdb.org/validation/2017/XrayValidationReportHelp>

with specific help available everywhere you see the ⓘ symbol.

---

The following versions of software and data (see [references ⓘ](#)) were used in the production of this report:

MolProbity : 4.02b-467  
Mogul : 1.8.5 (274361), CSD as541be (2020)  
Xtriage (Phenix) : **NOT EXECUTED**  
EDS : **NOT EXECUTED**  
buster-report : 1.1.7 (2018)  
Percentile statistics : 20191225.v01 (using entries in the PDB archive December 25th 2019)  
Ideal geometry (proteins) : Engh & Huber (2001)  
Ideal geometry (DNA, RNA) : Parkinson et al. (1996)  
Validation Pipeline (wwPDB-VP) : 2.11

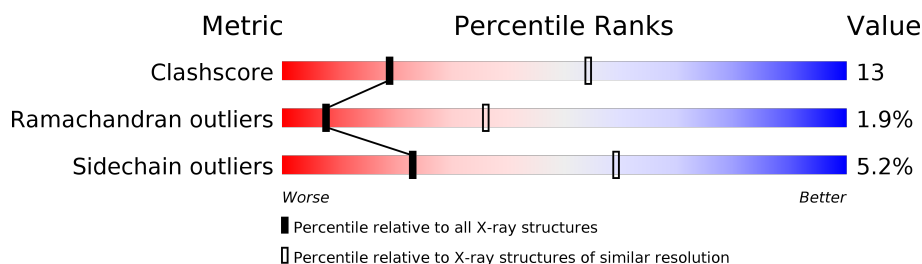
# 1 Overall quality at a glance

The following experimental techniques were used to determine the structure:

*X-RAY DIFFRACTION*

The reported resolution of this entry is 3.00 Å.

Percentile scores (ranging between 0-100) for global validation metrics of the entry are shown in the following graphic. The table shows the number of entries on which the scores are based.



Metric	Whole archive (#Entries)	Similar resolution (#Entries, resolution range(Å))
Clashscore	141614	2416 (3.00-3.00)
Ramachandran outliers	138981	2333 (3.00-3.00)
Sidechain outliers	138945	2336 (3.00-3.00)

The table below summarises the geometric issues observed across the polymeric chains and their fit to the electron density. The red, orange, yellow and green segments on the lower bar indicate the fraction of residues that contain outliers for  $\geq 3$ , 2, 1 and 0 types of geometric quality criteria respectively. A grey segment represents the fraction of residues that are not modelled. The numeric value for each fraction is indicated below the corresponding segment, with a dot representing fractions  $\leq 5\%$ .

Note EDS was not executed.

Mol	Chain	Length	Quality of chain
1	A	127	71% 19% • 9%
1	B	127	61% 29% • 9%
1	C	127	61% 29% • 9%
1	D	127	72% 17% • 9%
1	E	127	65% 24% • 9%
1	F	127	70% 19% • 9%
1	G	127	76% 14% • 9%
1	H	127	65% 24% • 9%

The following table lists non-polymeric compounds, carbohydrate monomers and non-standard residues in protein, DNA, RNA chains that are outliers for geometric or electron-density-fit criteria:

Mol	Type	Chain	Res	Chirality	Geometry	Clashes	Electron density
2	T44	C	128	-	-	X	-
2	T44	D	129	-	-	X	-

## 2 Entry composition

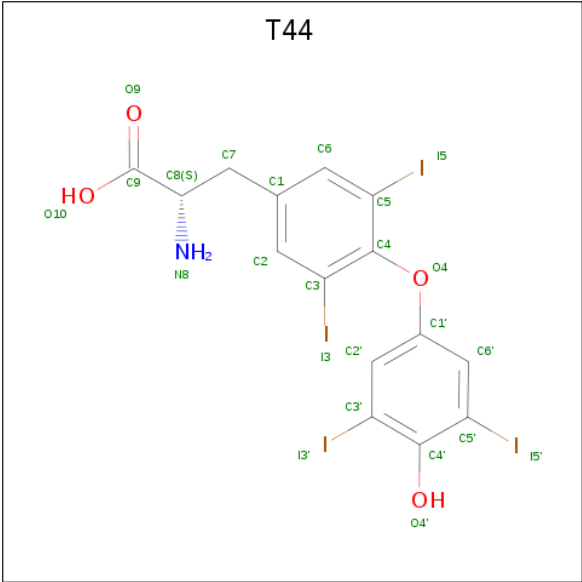
There are 2 unique types of molecules in this entry. The entry contains 7216 atoms, of which 0 are hydrogens and 0 are deuteriums.

In the tables below, the ZeroOcc column contains the number of atoms modelled with zero occupancy, the AltConf column contains the number of residues with at least one atom in alternate conformation and the Trace column contains the number of residues modelled with at most 2 atoms.

- Molecule 1 is a protein called TRANSTHYRETIN.

Mol	Chain	Residues	Atoms					ZeroOcc	AltConf	Trace
1	A	116	Total	C	N	O	S	0	0	0
			896	573	147	174	2			
1	B	116	Total	C	N	O	S	0	0	0
			896	573	147	174	2			
1	C	116	Total	C	N	O	S	0	0	0
			896	573	147	174	2			
1	D	116	Total	C	N	O	S	0	0	0
			896	573	147	174	2			
1	E	116	Total	C	N	O	S	0	0	0
			896	573	147	174	2			
1	F	116	Total	C	N	O	S	0	0	0
			896	573	147	174	2			
1	G	116	Total	C	N	O	S	0	0	0
			896	573	147	174	2			
1	H	116	Total	C	N	O	S	0	0	0
			896	573	147	174	2			

- Molecule 2 is 3,5,3',5'-TETRAIODO-L-THYRONINE (three-letter code: T44) (formula: C<sub>15</sub>H<sub>11</sub>I<sub>4</sub>NO<sub>4</sub>).



Mol	Chain	Residues	Atoms					ZeroOcc	AltConf
2	C	1	Total	C	I	N	O	0	0
			24	15	4	1	4		
2	D	1	Total	C	I	N	O	0	0
			24	15	4	1	4		

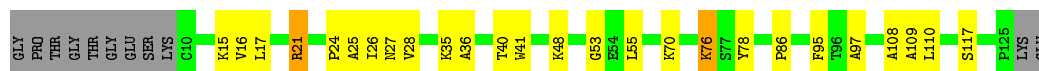
### 3 Residue-property plots [i](#)

These plots are drawn for all protein, RNA and DNA chains in the entry. The first graphic for a chain summarises the proportions of the various outlier classes displayed in the second graphic. The second graphic shows the sequence view annotated by issues in geometry. Residues are color-coded according to the number of geometric quality criteria for which they contain at least one outlier: green = 0, yellow = 1, orange = 2 and red = 3 or more. Stretches of 2 or more consecutive residues without any outlier are shown as a green connector. Residues present in the sample, but not in the model, are shown in grey.

Note EDS was not executed.

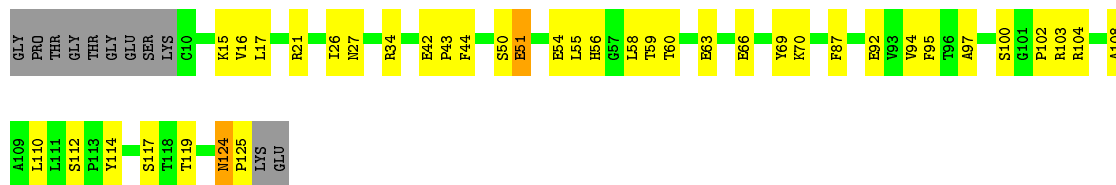
#### • Molecule 1: TRANSTHYRETIN

Chain A: 



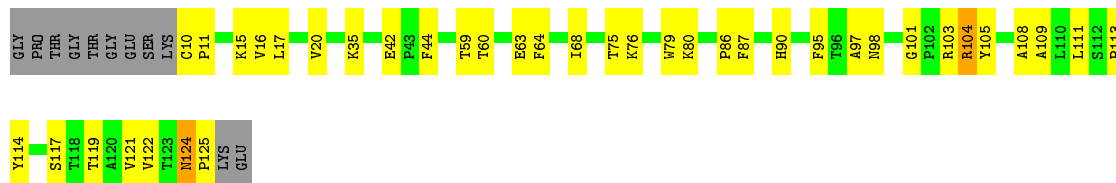
#### • Molecule 1: TRANSTHYRETIN

Chain B: 



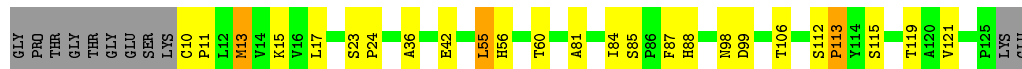
#### • Molecule 1: TRANSTHYRETIN

Chain C: 



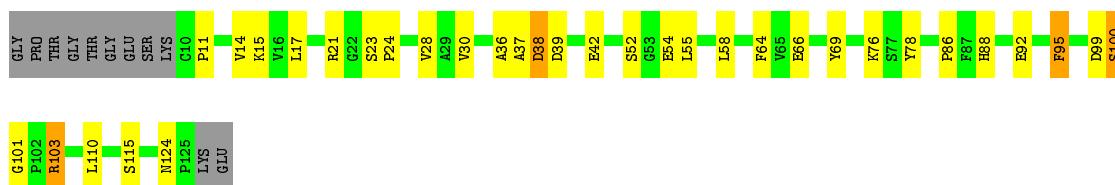
#### • Molecule 1: TRANSTHYRETIN

Chain D: 



#### • Molecule 1: TRANSTHYRETIN

Chain E: 



- Molecule 1: TRANSTHYRETIN

Chain F: 70% 19% 9%



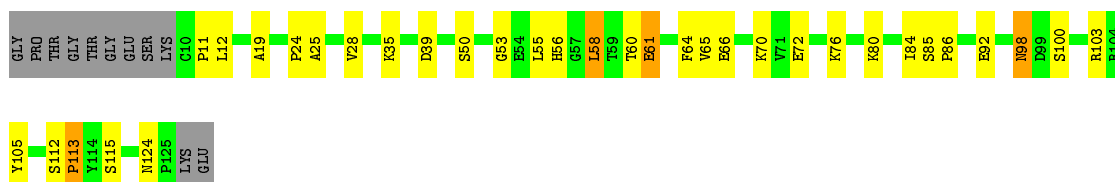
- Molecule 1: TRANSTHYRETIN

Chain G: 76% 14% 9%



- Molecule 1: TRANSTHYRETIN

Chain H: 65% 24% 9%



## 4 Data and refinement statistics

Xtriage (Phenix) and EDS were not executed - this section is therefore incomplete.

Property	Value	Source
Space group	P 1 21 1	Depositor
Cell constants a, b, c, $\alpha$ , $\beta$ , $\gamma$	76.69 Å 96.66 Å 81.74 Å 90.00° 106.84° 90.00°	Depositor
Resolution (Å)	15.00 – 3.00	Depositor
% Data completeness (in resolution range)	63.1 (15.00-3.00)	Depositor
$R_{merge}$	0.10	Depositor
$R_{sym}$	38.60	Depositor
Refinement program	CNS 1.0	Depositor
R, $R_{free}$	0.229 , 0.289	Depositor
Estimated twinning fraction	No twinning to report.	Xtriage
Total number of atoms	7216	wwPDB-VP
Average B, all atoms (Å <sup>2</sup> )	22.0	wwPDB-VP



## 5 Model quality [i](#)

### 5.1 Standard geometry [i](#)

Bond lengths and bond angles in the following residue types are not validated in this section: T44

The Z score for a bond length (or angle) is the number of standard deviations the observed value is removed from the expected value. A bond length (or angle) with  $|Z| > 5$  is considered an outlier worth inspection. RMSZ is the root-mean-square of all Z scores of the bond lengths (or angles).

Mol	Chain	Bond lengths		Bond angles	
		RMSZ	# Z  >5	RMSZ	# Z  >5
1	A	0.38	0/920	0.64	0/1256
1	B	0.37	0/920	0.64	0/1256
1	C	0.39	0/920	0.65	0/1256
1	D	0.40	0/920	0.65	0/1256
1	E	0.39	0/920	0.64	0/1256
1	F	0.41	0/920	0.63	0/1256
1	G	0.39	0/920	0.64	0/1256
1	H	0.41	0/920	0.67	1/1256 (0.1%)
All	All	0.39	0/7360	0.65	1/10048 (0.0%)

There are no bond length outliers.

All (1) bond angle outliers are listed below:

Mol	Chain	Res	Type	Atoms	Z	Observed(°)	Ideal(°)
1	H	58	LEU	CA-CB-CG	5.26	127.39	115.30

There are no chirality outliers.

There are no planarity outliers.

### 5.2 Too-close contacts [i](#)

In the following table, the Non-H and H(model) columns list the number of non-hydrogen atoms and hydrogen atoms in the chain respectively. The H(added) column lists the number of hydrogen atoms added and optimized by MolProbity. The Clashes column lists the number of clashes within the asymmetric unit, whereas Symm-Clashes lists symmetry related clashes.

Mol	Chain	Non-H	H(model)	H(added)	Clashes	Symm-Clashes
1	A	896	0	869	22	0
1	B	896	0	869	35	0

*Continued on next page...*

*Continued from previous page...*

Mol	Chain	Non-H	H(model)	H(added)	Clashes	Symm-Clashes
1	C	896	0	869	35	0
1	D	896	0	869	21	0
1	E	896	0	869	26	0
1	F	896	0	869	18	0
1	G	896	0	869	14	0
1	H	896	0	869	22	0
2	C	24	0	9	22	0
2	D	24	0	9	17	0
All	All	7216	0	6970	185	0

The all-atom clashscore is defined as the number of clashes found per 1000 atoms (including hydrogen atoms). The all-atom clashscore for this structure is 13.

All (185) close contacts within the same asymmetric unit are listed below, sorted by their clash magnitude.

Atom-1	Atom-2	Interatomic distance (Å)	Clash overlap (Å)
1:B:17:LEU:HD12	2:D:129:T44:I5	2.30	1.01
1:D:119:THR:HG21	2:D:129:T44:I5	2.42	0.90
1:B:110:LEU:HD13	2:D:129:T44:I5	2.42	0.88
1:D:119:THR:HG22	2:D:129:T44:I3'	2.47	0.85
2:C:128:T44:I3	2:C:128:T44:C6'	2.98	0.82
1:D:17:LEU:HD11	2:D:129:T44:I3	2.51	0.80
2:C:128:T44:I3	2:C:128:T44:C1'	3.01	0.79
1:F:26:ILE:H	1:F:26:ILE:HD13	1.50	0.77
1:A:95:PHE:CE1	1:A:97:ALA:HB2	2.23	0.74
1:F:15:LYS:HE3	1:F:17:LEU:HD21	1.71	0.72
1:D:106:THR:HG21	2:D:129:T44:O10	1.91	0.70
1:B:124:ASN:HD22	1:B:124:ASN:N	1.87	0.70
1:E:103:ARG:HE	1:E:124:ASN:ND2	1.90	0.70
1:B:21:ARG:HG3	1:B:21:ARG:HH11	1.57	0.69
1:H:70:LYS:HD3	1:H:72:GLU:HG3	1.75	0.68
1:B:44:PHE:CE2	1:B:59:THR:HG21	2.27	0.68
1:C:15:LYS:HD2	2:C:128:T44:O10	1.93	0.68
1:F:44:PHE:CE2	1:F:59:THR:HG21	2.29	0.68
1:H:98:ASN:ND2	1:H:105:TYR:HE1	1.93	0.67
1:C:121:VAL:HG21	2:C:128:T44:I5	2.67	0.65
1:C:75:THR:HB	1:C:90:HIS:HA	1.79	0.65
1:H:112:SER:HB3	1:H:115:SER:O	1.97	0.65
1:A:95:PHE:HE1	1:A:97:ALA:HB2	1.61	0.64
1:H:76:LYS:O	1:H:80:LYS:HG2	1.98	0.64
1:B:17:LEU:CD1	2:D:129:T44:C6	2.76	0.64

*Continued on next page...*

*Continued from previous page...*

Atom-1	Atom-2	Interatomic distance (Å)	Clash overlap (Å)
1:F:33:PHE:HB3	1:F:41:TRP:HB3	1.80	0.63
1:D:36:ALA:HB2	1:D:42:GLU:HG2	1.80	0.62
1:B:17:LEU:CD1	2:D:129:T44:H6	2.29	0.62
1:F:44:PHE:HE2	1:F:59:THR:HG21	1.65	0.62
1:A:15:LYS:HE3	1:A:17:LEU:HD21	1.82	0.61
1:H:60:THR:HG22	1:H:61:GLU:H	1.65	0.61
1:A:108:ALA:C	2:C:128:T44:I5'	3.09	0.61
2:D:129:T44:I5	2:D:129:T44:C2'	3.19	0.61
1:E:15:LYS:HE2	1:E:17:LEU:HD21	1.81	0.61
1:E:66:GLU:HB3	1:E:99:ASP:OD1	2.01	0.60
1:A:109:ALA:CA	2:C:128:T44:I5'	3.20	0.60
1:E:103:ARG:HE	1:E:124:ASN:HD22	1.47	0.59
1:F:25:ALA:HB1	1:F:28:VAL:HG21	1.84	0.59
1:A:110:LEU:HD13	1:C:119:THR:HG21	1.84	0.59
1:A:109:ALA:N	2:C:128:T44:I5'	3.06	0.59
1:C:17:LEU:CD1	2:C:128:T44:I3	3.20	0.59
1:D:81:ALA:HA	1:G:21:ARG:HD2	1.85	0.59
1:H:103:ARG:HH11	1:H:103:ARG:HG2	1.67	0.59
1:B:15:LYS:HD2	1:B:54:GLU:HG2	1.85	0.59
1:B:17:LEU:HD12	2:D:129:T44:H6	1.85	0.58
1:H:24:PRO:HB3	1:H:53:GLY:HA3	1.86	0.58
1:B:15:LYS:HD2	1:B:54:GLU:CG	2.34	0.58
1:B:17:LEU:HD11	2:D:129:T44:C6	2.33	0.58
1:B:17:LEU:CD1	2:D:129:T44:I5	3.14	0.57
1:E:28:VAL:HG22	1:E:78:TYR:CD1	2.39	0.57
1:C:35:LYS:HB2	1:C:68:ILE:HB	1.86	0.57
1:D:87:PHE:HD2	1:D:88:HIS:CE1	2.22	0.57
1:B:70:LYS:HD2	1:B:92:GLU:CD	2.25	0.56
1:D:55:LEU:N	1:D:55:LEU:HD23	2.21	0.56
1:D:13:MET:CE	1:D:15:LYS:HE3	2.35	0.56
1:E:69:TYR:HB2	1:E:95:PHE:CE1	2.41	0.56
1:C:119:THR:HG23	2:C:128:T44:I3'	2.76	0.56
1:B:124:ASN:N	1:B:124:ASN:ND2	2.54	0.56
1:B:17:LEU:HD12	2:D:129:T44:C6	2.36	0.56
1:G:103:ARG:HG2	1:G:122:VAL:CG1	2.36	0.55
1:G:62:GLU:CD	1:G:62:GLU:H	2.10	0.55
1:C:95:PHE:HE1	1:C:97:ALA:HB2	1.70	0.55
1:E:23:SER:HB2	1:E:24:PRO:HD2	1.89	0.55
1:B:16:VAL:O	1:B:17:LEU:HD23	2.07	0.55
1:F:103:ARG:HD2	1:F:124:ASN:HB3	1.90	0.54
1:D:10:CYS:SG	1:D:11:PRO:HD3	2.48	0.54

*Continued on next page...*

*Continued from previous page...*

Atom-1	Atom-2	Interatomic distance (Å)	Clash overlap (Å)
1:B:21:ARG:HG3	1:B:21:ARG:NH1	2.24	0.53
1:C:15:LYS:HD2	2:C:128:T44:C9	2.38	0.53
1:E:76:LYS:HA	1:E:86:PRO:HG3	1.90	0.53
1:B:51:GLU:H	1:B:51:GLU:CD	2.13	0.53
1:H:12:LEU:HD22	1:H:64:PHE:HE1	1.73	0.52
1:H:60:THR:HG22	1:H:61:GLU:N	2.23	0.52
1:F:55:LEU:HD21	1:F:58:LEU:HD21	1.92	0.52
1:G:119:THR:HB	1:H:115:SER:HB2	1.92	0.52
1:C:11:PRO:HA	1:C:104:ARG:HD3	1.92	0.52
1:C:108:ALA:HB3	2:C:128:T44:H2'	1.91	0.52
1:B:44:PHE:CZ	1:B:59:THR:HG21	2.45	0.52
1:C:17:LEU:HD12	2:C:128:T44:I3	2.80	0.51
1:B:103:ARG:HH22	1:H:100:SER:HB3	1.76	0.51
1:E:95:PHE:CD1	1:E:95:PHE:N	2.77	0.51
1:E:14:VAL:HG21	1:E:30:VAL:HG21	1.93	0.50
1:C:60:THR:OG1	1:C:63:GLU:HG2	2.10	0.50
1:C:103:ARG:HG2	1:C:103:ARG:HH11	1.76	0.50
1:C:87:PHE:HB2	1:C:114:TYR:CD1	2.47	0.50
1:C:108:ALA:CB	2:C:128:T44:H2'	2.41	0.50
1:C:17:LEU:HD11	2:C:128:T44:I3	2.82	0.50
1:A:24:PRO:HB3	1:A:53:GLY:HA3	1.94	0.50
1:C:95:PHE:CE1	1:C:97:ALA:HB2	2.47	0.50
1:A:26:ILE:H	1:A:26:ILE:HD12	1.76	0.50
1:C:76:LYS:O	1:C:80:LYS:HG2	2.12	0.50
1:D:119:THR:CG2	2:D:129:T44:I3'	3.25	0.49
1:G:32:VAL:HG21	1:G:58:LEU:HD13	1.93	0.49
1:H:35:LYS:NZ	1:H:39:ASP:HA	2.28	0.49
1:B:17:LEU:HB2	2:D:129:T44:I5	2.83	0.49
1:B:15:LYS:O	1:B:108:ALA:HA	2.12	0.49
1:F:42:GLU:O	1:F:44:PHE:N	2.46	0.49
1:H:72:GLU:HG2	1:H:92:GLU:HG2	1.94	0.49
1:G:103:ARG:HG2	1:G:122:VAL:HG13	1.95	0.49
1:H:103:ARG:NH1	1:H:103:ARG:HG2	2.27	0.48
1:A:109:ALA:HA	2:C:128:T44:I5'	2.83	0.48
1:C:44:PHE:HZ	1:C:59:THR:HG1	1.58	0.48
1:A:117:SER:OG	1:B:117:SER:HB3	2.14	0.48
1:C:105:TYR:CD2	1:C:122:VAL:HG22	2.49	0.48
1:D:23:SER:HB2	1:D:24:PRO:HD2	1.96	0.48
1:C:79:TRP:HZ2	1:C:111:LEU:HB3	1.77	0.48
1:D:55:LEU:H	1:D:55:LEU:HD23	1.79	0.48
1:E:14:VAL:HG22	1:E:55:LEU:HB3	1.95	0.47

*Continued on next page...*

*Continued from previous page...*

Atom-1	Atom-2	Interatomic distance (Å)	Clash overlap (Å)
1:B:16:VAL:C	1:B:17:LEU:HD23	2.35	0.47
1:D:13:MET:HE1	1:D:15:LYS:HE3	1.95	0.47
2:D:129:T44:I5	2:D:129:T44:C1'	3.33	0.47
1:H:35:LYS:HZ3	1:H:39:ASP:HA	1.79	0.47
1:A:16:VAL:HG12	1:A:25:ALA:HB3	1.96	0.47
1:C:16:VAL:CG1	1:C:111:LEU:HD12	2.44	0.47
1:E:95:PHE:HD1	1:E:95:PHE:N	2.13	0.47
1:D:10:CYS:N	1:D:11:PRO:HD2	2.30	0.46
1:A:27:ASN:OD1	1:A:48:LYS:HD2	2.15	0.46
1:A:15:LYS:HE2	2:C:128:T44:C6	2.46	0.46
1:C:20:VAL:HG21	1:C:113:PRO:HD3	1.97	0.46
1:F:115:SER:OG	1:G:110:LEU:HD21	2.16	0.46
1:F:112:SER:HB2	1:F:115:SER:O	2.16	0.46
1:B:26:ILE:HG22	1:B:27:ASN:N	2.32	0.45
1:D:112:SER:HB3	1:D:115:SER:O	2.15	0.45
1:B:124:ASN:HD22	1:B:124:ASN:H	1.58	0.45
1:E:36:ALA:HB2	1:E:42:GLU:CG	2.47	0.45
1:B:70:LYS:HG3	1:B:94:VAL:HG22	1.99	0.45
1:F:78:TYR:O	1:F:82:LEU:HD23	2.17	0.45
1:B:55:LEU:HD21	1:B:58:LEU:HD21	1.99	0.45
1:E:36:ALA:HB2	1:E:42:GLU:HG2	1.98	0.45
1:E:95:PHE:HD1	1:E:95:PHE:H	1.64	0.45
1:H:84:ILE:O	1:H:86:PRO:HD3	2.16	0.45
1:B:95:PHE:CE2	1:B:97:ALA:HB2	2.52	0.45
1:E:115:SER:HB3	1:H:19:ALA:HB1	1.97	0.45
1:D:84:ILE:HG22	1:D:85:SER:N	2.32	0.45
1:C:15:LYS:HE2	2:C:128:T44:C2	2.46	0.44
1:B:60:THR:OG1	1:B:63:GLU:HG2	2.18	0.44
1:C:79:TRP:CD1	1:C:86:PRO:HB3	2.53	0.44
1:F:56:HIS:CD2	1:F:56:HIS:H	2.35	0.44
1:E:37:ALA:C	1:E:39:ASP:H	2.21	0.44
1:B:34:ARG:HB2	1:B:69:TYR:CE2	2.53	0.44
1:B:104:ARG:HG3	1:B:125:PRO:HD3	1.99	0.44
1:G:26:ILE:HD12	1:G:51:GLU:HA	1.99	0.44
1:H:55:LEU:HD11	1:H:58:LEU:HD23	2.00	0.44
1:C:15:LYS:NZ	2:C:128:T44:H8	2.33	0.43
1:E:52:SER:HB2	1:E:54:GLU:HG2	2.00	0.43
1:A:110:LEU:N	2:C:128:T44:I5'	3.21	0.43
1:C:15:LYS:HE2	2:C:128:T44:H8	2.00	0.43
1:E:110:LEU:HD21	1:H:115:SER:OG	2.19	0.43
1:H:25:ALA:HB1	1:H:28:VAL:HG21	2.00	0.43

*Continued on next page...*

*Continued from previous page...*

Atom-1	Atom-2	Interatomic distance (Å)	Clash overlap (Å)
1:E:23:SER:HA	1:G:121:VAL:HG13	2.01	0.43
1:G:32:VAL:CG2	1:G:58:LEU:HD13	2.49	0.43
1:B:17:LEU:HD13	1:D:121:VAL:HG21	2.01	0.43
1:E:99:ASP:O	1:E:100:SER:HB2	2.19	0.43
1:A:55:LEU:O	1:A:55:LEU:HG	2.16	0.43
1:A:76:LYS:HA	1:A:86:PRO:HG3	2.01	0.43
1:C:15:LYS:CE	2:C:128:T44:H8	2.49	0.43
1:A:109:ALA:C	2:C:128:T44:I5'	3.27	0.43
1:E:66:GLU:CD	1:E:66:GLU:H	2.22	0.43
1:C:98:ASN:HA	1:C:101:GLY:O	2.19	0.42
1:G:124:ASN:HA	1:G:125:PRO:HD3	1.82	0.42
1:C:124:ASN:HD22	1:C:125:PRO:HD2	1.85	0.42
1:D:13:MET:HE3	1:D:15:LYS:HE3	2.01	0.42
1:E:55:LEU:HG	1:E:58:LEU:HD13	2.01	0.42
1:F:103:ARG:CD	1:F:124:ASN:HB3	2.50	0.41
1:F:15:LYS:CE	1:F:17:LEU:HD21	2.46	0.41
1:F:58:LEU:O	1:F:59:THR:HG23	2.20	0.41
1:F:55:LEU:HD23	1:F:58:LEU:HD11	2.01	0.41
1:A:41:TRP:CZ2	1:A:70:LYS:HE3	2.55	0.41
1:A:21:ARG:CB	1:A:21:ARG:HH11	2.34	0.41
1:A:35:LYS:HG2	1:A:36:ALA:H	1.85	0.41
1:B:119:THR:HB	2:D:129:T44:I5'	2.90	0.41
1:C:119:THR:HG22	1:D:115:SER:OG	2.21	0.41
1:B:87:PHE:HB2	1:B:114:TYR:CD2	2.56	0.41
1:C:15:LYS:HB3	1:C:15:LYS:HE3	1.83	0.41
1:C:35:LYS:CB	1:C:68:ILE:HB	2.49	0.41
1:A:28:VAL:HG22	1:A:78:TYR:CD1	2.56	0.41
1:C:109:ALA:HA	1:C:117:SER:O	2.20	0.41
1:E:11:PRO:HB2	1:E:64:PHE:CD2	2.55	0.41
1:F:119:THR:CG2	1:F:120:ALA:N	2.84	0.41
1:G:98:ASN:OD1	1:G:102:PRO:HA	2.21	0.41
1:D:81:ALA:HA	1:G:21:ARG:CD	2.51	0.41
1:E:101:GLY:O	1:E:103:ARG:HD3	2.21	0.40
1:H:103:ARG:HH12	1:H:124:ASN:HB2	1.85	0.40
1:G:112:SER:HB2	1:G:115:SER:O	2.21	0.40
1:E:88:HIS:CD2	1:E:88:HIS:H	2.40	0.40
1:H:98:ASN:HD22	1:H:105:TYR:HE1	1.65	0.40

There are no symmetry-related clashes.

## 5.3 Torsion angles

### 5.3.1 Protein backbone

In the following table, the Percentiles column shows the percent Ramachandran outliers of the chain as a percentile score with respect to all X-ray entries followed by that with respect to entries of similar resolution.

The Analysed column shows the number of residues for which the backbone conformation was analysed, and the total number of residues.

Mol	Chain	Analysed	Favoured	Allowed	Outliers	Percentiles	
1	A	114/127 (90%)	107 (94%)	7 (6%)	0	100	100
1	B	114/127 (90%)	103 (90%)	7 (6%)	4 (4%)	3	20
1	C	114/127 (90%)	104 (91%)	10 (9%)	0	100	100
1	D	114/127 (90%)	105 (92%)	7 (6%)	2 (2%)	8	37
1	E	114/127 (90%)	102 (90%)	10 (9%)	2 (2%)	8	37
1	F	114/127 (90%)	101 (89%)	10 (9%)	3 (3%)	5	27
1	G	114/127 (90%)	107 (94%)	7 (6%)	0	100	100
1	H	114/127 (90%)	94 (82%)	14 (12%)	6 (5%)	2	11
All	All	912/1016 (90%)	823 (90%)	72 (8%)	17 (2%)	8	36

All (17) Ramachandran outliers are listed below:

Mol	Chain	Res	Type
1	D	98	ASN
1	E	100	SER
1	H	50	SER
1	H	98	ASN
1	B	50	SER
1	B	66	GLU
1	E	38	ASP
1	F	43	PRO
1	H	61	GLU
1	B	100	SER
1	F	74	ASP
1	H	65	VAL
1	B	102	PRO
1	F	50	SER
1	D	113	PRO
1	H	113	PRO
1	H	11	PRO

### 5.3.2 Protein sidechains ⓘ

In the following table, the Percentiles column shows the percent sidechain outliers of the chain as a percentile score with respect to all X-ray entries followed by that with respect to entries of similar resolution.

The Analysed column shows the number of residues for which the sidechain conformation was analysed, and the total number of residues.

Mol	Chain	Analysed	Rotameric	Outliers	Percentiles	
1	A	97/105 (92%)	94 (97%)	3 (3%)	40	75
1	B	97/105 (92%)	91 (94%)	6 (6%)	18	52
1	C	97/105 (92%)	92 (95%)	5 (5%)	23	59
1	D	97/105 (92%)	91 (94%)	6 (6%)	18	52
1	E	97/105 (92%)	92 (95%)	5 (5%)	23	59
1	F	97/105 (92%)	91 (94%)	6 (6%)	18	52
1	G	97/105 (92%)	92 (95%)	5 (5%)	23	59
1	H	97/105 (92%)	93 (96%)	4 (4%)	30	67
All	All	776/840 (92%)	736 (95%)	40 (5%)	23	59

All (40) residues with a non-rotameric sidechain are listed below:

Mol	Chain	Res	Type
1	A	21	ARG
1	A	40	THR
1	A	76	LYS
1	B	42	GLU
1	B	43	PRO
1	B	51	GLU
1	B	56	HIS
1	B	112	SER
1	B	124	ASN
1	C	10	CYS
1	C	42	GLU
1	C	64	PHE
1	C	104	ARG
1	C	124	ASN
1	D	13	MET
1	D	55	LEU
1	D	56	HIS
1	D	60	THR
1	D	99	ASP

*Continued on next page...*



*Continued from previous page...*

Mol	Chain	Res	Type
1	D	113	PRO
1	E	21	ARG
1	E	38	ASP
1	E	92	GLU
1	E	95	PHE
1	E	103	ARG
1	F	20	VAL
1	F	26	ILE
1	F	56	HIS
1	F	59	THR
1	F	63	GLU
1	F	64	PHE
1	G	40	THR
1	G	42	GLU
1	G	103	ARG
1	G	118	THR
1	G	119	THR
1	H	56	HIS
1	H	66	GLU
1	H	85	SER
1	H	113	PRO

Some sidechains can be flipped to improve hydrogen bonding and reduce clashes. All (10) such sidechains are listed below:

Mol	Chain	Res	Type
1	A	90	HIS
1	B	124	ASN
1	C	90	HIS
1	D	88	HIS
1	E	88	HIS
1	E	124	ASN
1	F	27	ASN
1	F	56	HIS
1	F	88	HIS
1	H	98	ASN

### 5.3.3 RNA ⓘ

There are no RNA molecules in this entry.

## 5.4 Non-standard residues in protein, DNA, RNA chains ⓘ

There are no non-standard protein/DNA/RNA residues in this entry.

## 5.5 Carbohydrates ⓘ

There are no carbohydrates in this entry.

## 5.6 Ligand geometry ⓘ

2 ligands are modelled in this entry.

In the following table, the Counts columns list the number of bonds (or angles) for which Mogul statistics could be retrieved, the number of bonds (or angles) that are observed in the model and the number of bonds (or angles) that are defined in the Chemical Component Dictionary. The Link column lists molecule types, if any, to which the group is linked. The Z score for a bond length (or angle) is the number of standard deviations the observed value is removed from the expected value. A bond length (or angle) with  $|Z| > 2$  is considered an outlier worth inspection. RMSZ is the root-mean-square of all Z scores of the bond lengths (or angles).

Mol	Type	Chain	Res	Link	Bond lengths			Bond angles		
					Counts	RMSZ	$\# Z  > 2$	Counts	RMSZ	$\# Z  > 2$
2	T44	C	128	-	22,25,25	0.83	0	31,36,36	1.26	2 (6%)
2	T44	D	129	-	22,25,25	0.68	0	31,36,36	0.83	1 (3%)

In the following table, the Chirals column lists the number of chiral outliers, the number of chiral centers analysed, the number of these observed in the model and the number defined in the Chemical Component Dictionary. Similar counts are reported in the Torsion and Rings columns. '-' means no outliers of that kind were identified.

Mol	Type	Chain	Res	Link	Chirals	Torsions	Rings
2	T44	C	128	-	-	2/8/12/12	0/2/2/2
2	T44	D	129	-	-	3/8/12/12	0/2/2/2

There are no bond length outliers.

All (3) bond angle outliers are listed below:

Mol	Chain	Res	Type	Atoms	Z	Observed(°)	Ideal(°)
2	C	128	T44	C1'-O4-C4	4.48	125.69	118.48
2	C	128	T44	O4-C4-C3	2.92	124.99	120.28
2	D	129	T44	C1'-O4-C4	2.32	122.21	118.48

There are no chirality outliers.

All (5) torsion outliers are listed below:

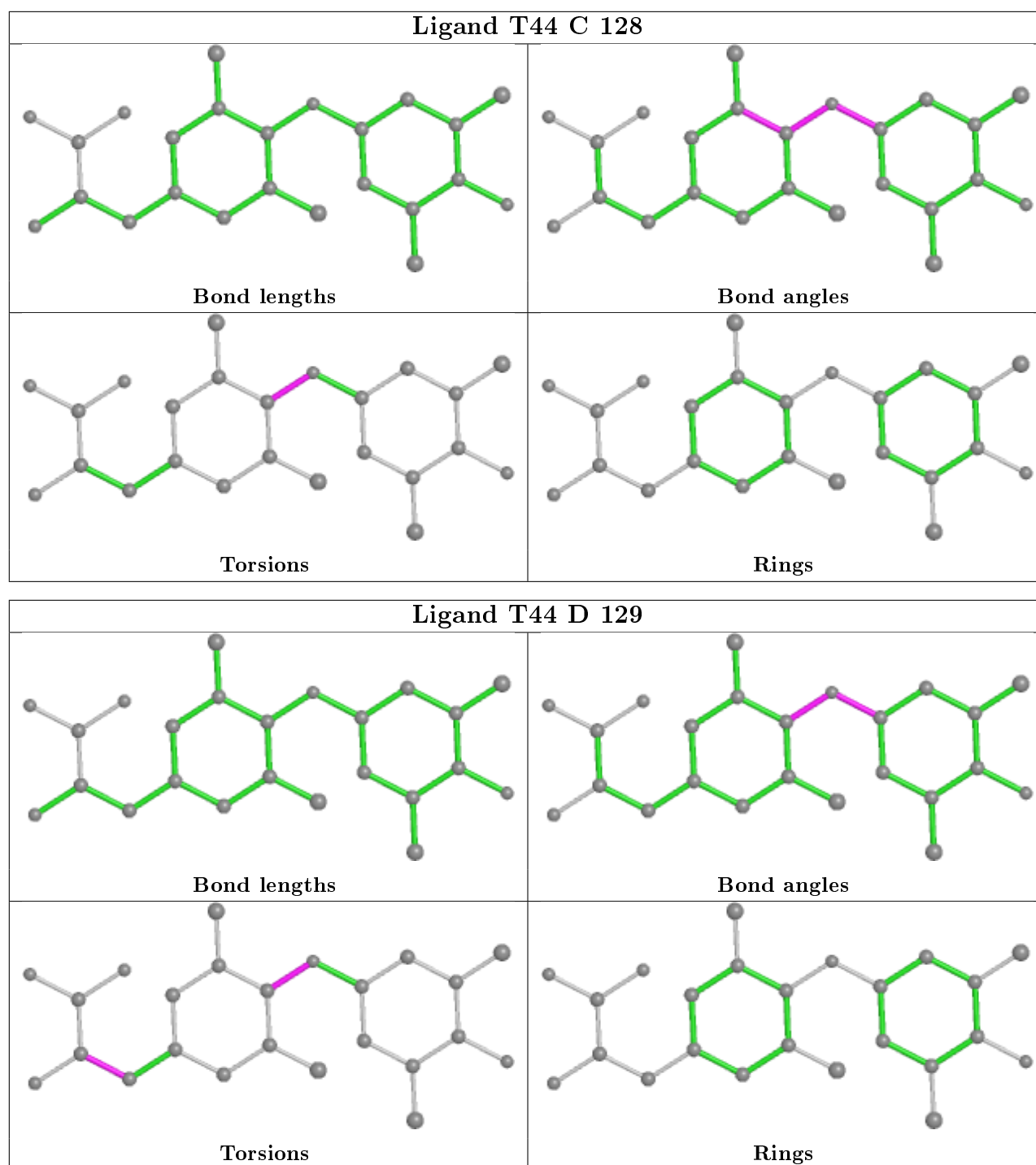
Mol	Chain	Res	Type	Atoms
2	C	128	T44	C3-C4-O4-C1'
2	C	128	T44	C5-C4-O4-C1'
2	D	129	T44	C1-C7-C8-C9
2	D	129	T44	C1-C7-C8-N8
2	D	129	T44	C5-C4-O4-C1'

There are no ring outliers.

2 monomers are involved in 39 short contacts:

Mol	Chain	Res	Type	Clashes	Symm-Clashes
2	C	128	T44	22	0
2	D	129	T44	17	0

The following is a two-dimensional graphical depiction of Mogul quality analysis of bond lengths, bond angles, torsion angles, and ring geometry for all instances of the Ligand of Interest. In addition, ligands with molecular weight > 250 and outliers as shown on the validation Tables will also be included. For torsion angles, if less than 5% of the Mogul distribution of torsion angles is within 10 degrees of the torsion angle in question, then that torsion angle is considered an outlier. Any bond that is central to one or more torsion angles identified as an outlier by Mogul will be highlighted in the graph. For rings, the root-mean-square deviation (RMSD) between the ring in question and similar rings identified by Mogul is calculated over all ring torsion angles. If the average RMSD is greater than 60 degrees and the minimal RMSD between the ring in question and any Mogul-identified rings is also greater than 60 degrees, then that ring is considered an outlier. The outliers are highlighted in purple. The color gray indicates Mogul did not find sufficient equivalents in the CSD to analyse the geometry.



## 5.7 Other polymers [i](#)

There are no such residues in this entry.

## 5.8 Polymer linkage issues [i](#)

There are no chain breaks in this entry.

## 6 Fit of model and data ⓘ

### 6.1 Protein, DNA and RNA chains ⓘ

EDS was not executed - this section is therefore empty.

### 6.2 Non-standard residues in protein, DNA, RNA chains ⓘ

EDS was not executed - this section is therefore empty.

### 6.3 Carbohydrates ⓘ

EDS was not executed - this section is therefore empty.

### 6.4 Ligands ⓘ

EDS was not executed - this section is therefore empty.

### 6.5 Other polymers ⓘ

EDS was not executed - this section is therefore empty.