



Full wwPDB X-ray Structure Validation Report ⓘ

Aug 21, 2020 – 02:53 AM BST

PDB ID : 4IDK
Title : HIV-1 reverse transcriptase with bound fragment at the 428 site
Authors : Bauman, J.D.; Patel, D.; Arnold, E.
Deposited on : 2012-12-12
Resolution : 2.10 Å(reported)

This is a Full wwPDB X-ray Structure Validation Report for a publicly released PDB entry.

We welcome your comments at validation@mail.wwpdb.org

A user guide is available at

<https://www.wwpdb.org/validation/2017/XrayValidationReportHelp>

with specific help available everywhere you see the ⓘ symbol.

The following versions of software and data (see [references ⓘ](#)) were used in the production of this report:

MolProbity : 4.02b-467
Mogul : 1.8.5 (274361), CSD as541be (2020)
Xtriage (Phenix) : 1.13
EDS : 2.13.1
buster-report : 1.1.7 (2018)
Percentile statistics : 20191225.v01 (using entries in the PDB archive December 25th 2019)
Refmac : 5.8.0158
CCP4 : 7.0.044 (Gargrove)
Ideal geometry (proteins) : Engh & Huber (2001)
Ideal geometry (DNA, RNA) : Parkinson et al. (1996)
Validation Pipeline (wwPDB-VP) : 2.13.1

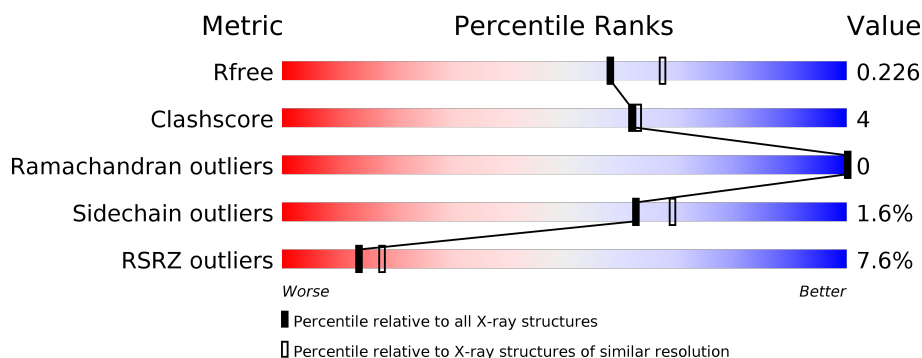
1 Overall quality at a glance

The following experimental techniques were used to determine the structure:

X-RAY DIFFRACTION

The reported resolution of this entry is 2.10 Å.

Percentile scores (ranging between 0-100) for global validation metrics of the entry are shown in the following graphic. The table shows the number of entries on which the scores are based.



Metric	Whole archive (#Entries)	Similar resolution (#Entries, resolution range(Å))
R_{free}	130704	5197 (2.10-2.10)
Clashscore	141614	5710 (2.10-2.10)
Ramachandran outliers	138981	5647 (2.10-2.10)
Sidechain outliers	138945	5648 (2.10-2.10)
RSRZ outliers	127900	5083 (2.10-2.10)

The table below summarises the geometric issues observed across the polymeric chains and their fit to the electron density. The red, orange, yellow and green segments on the lower bar indicate the fraction of residues that contain outliers for ≥ 3 , 2, 1 and 0 types of geometric quality criteria respectively. A grey segment represents the fraction of residues that are not modelled. The numeric value for each fraction is indicated below the corresponding segment, with a dot representing fractions $\leq 5\%$. The upper red bar (where present) indicates the fraction of residues that have poor fit to the electron density. The numeric value is given above the bar.

Mol	Chain	Length	Quality of chain
1	A	557	<div> <div>6%</div> <div> <div></div> <div>90%</div> <div>10%</div> </div> </div>
2	B	429	<div> <div>9%</div> <div> <div></div> <div>85%</div> <div>10%</div> <div>...</div> </div> </div>

The following table lists non-polymeric compounds, carbohydrate monomers and non-standard residues in protein, DNA, RNA chains that are outliers for geometric or electron-density-fit criteria:

Mol	Type	Chain	Res	Chirality	Geometry	Clashes	Electron density
6	DMS	A	606	-	-	X	-

2 Entry composition

There are 7 unique types of molecules in this entry. The entry contains 8702 atoms, of which 0 are hydrogens and 0 are deuteriums.

In the tables below, the ZeroOcc column contains the number of atoms modelled with zero occupancy, the AltConf column contains the number of residues with at least one atom in alternate conformation and the Trace column contains the number of residues modelled with at most 2 atoms.

- Molecule 1 is a protein called Reverse transcriptase/ribonuclease H.

Mol	Chain	Residues	Atoms					ZeroOcc	AltConf	Trace
1	A	556	Total	C	N	O	S	0	1	0
			4525	2928	752	837	8			

There are 5 discrepancies between the modelled and reference sequences:

Chain	Residue	Modelled	Actual	Comment	Reference
A	-1	MET	-	EXPRESSION TAG	UNP P03366
A	0	VAL	-	EXPRESSION TAG	UNP P03366
A	172	ALA	LYS	ENGINEERED MUTATION	UNP P03366
A	173	ALA	LYS	ENGINEERED MUTATION	UNP P03366
A	280	SER	CYS	ENGINEERED MUTATION	UNP P03366

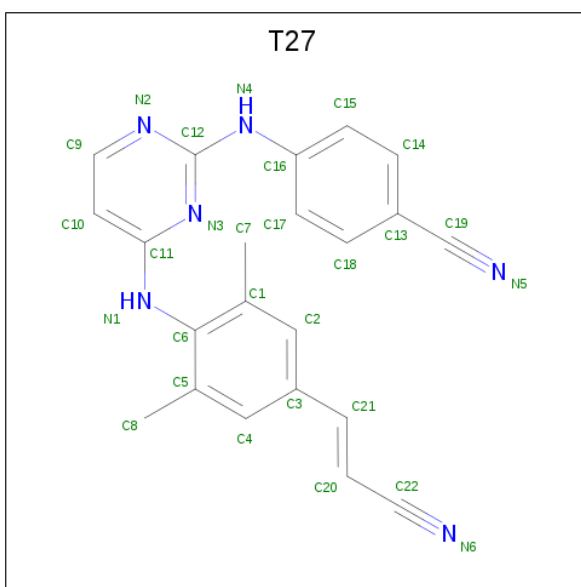
- Molecule 2 is a protein called p51 RT.

Mol	Chain	Residues	Atoms					ZeroOcc	AltConf	Trace
2	B	412	Total	C	N	O	S	0	1	0
			3419	2228	565	619	7			

There are 2 discrepancies between the modelled and reference sequences:

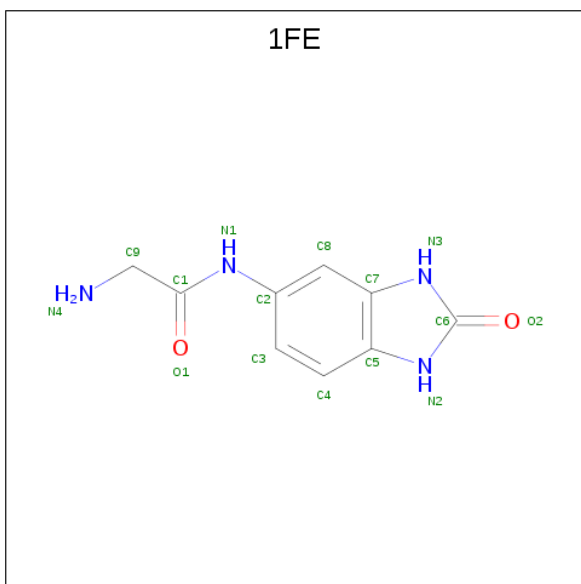
Chain	Residue	Modelled	Actual	Comment	Reference
B	0	GLY	-	EXPRESSION TAG	UNP P03366
B	280	SER	CYS	ENGINEERED MUTATION	UNP P03366

- Molecule 3 is 4-{{4-({4-[(E)-2-cyanoethenyl]-2,6-dimethylphenyl}amino)pyrimidin-2-yl}amino}benzonitrile (three-letter code: T27) (formula: C₂₂H₁₈N₆).



Mol	Chain	Residues	Atoms			ZeroOcc	AltConf
3	A	1	Total	C	N	0	0
			28	22	6		

- Molecule 4 is N-(2-oxo-2,3-dihydro-1H-benzimidazol-5-yl)glycinamide (three-letter code: 1FE) (formula: $C_9H_{10}N_4O_2$).

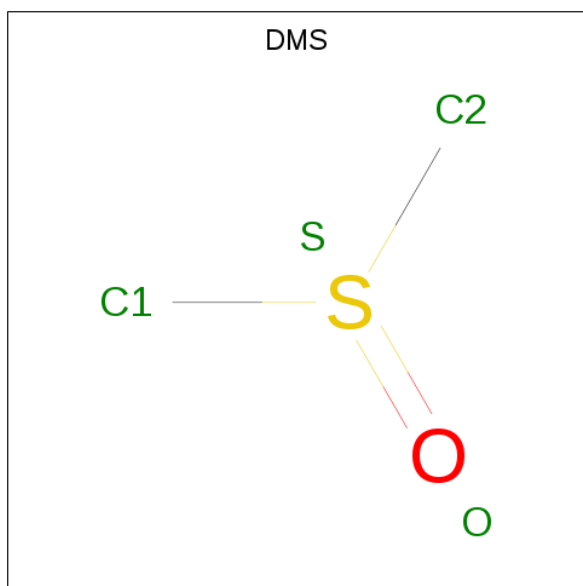


Mol	Chain	Residues	Atoms				ZeroOcc	AltConf
4	A	1	Total	C	N	O	0	0
			15	9	4	2		

- Molecule 5 is MAGNESIUM ION (three-letter code: MG) (formula: Mg).

Mol	Chain	Residues	Atoms		ZeroOcc	AltConf
5	A	1	Total	Mg	0	0
			1	1		

- Molecule 6 is DIMETHYL SULFOXIDE (three-letter code: DMS) (formula: C₂H₆OS).



Mol	Chain	Residues	Atoms				ZeroOcc	AltConf
6	A	1	Total	C	O	S	0	0
			4	2	1	1		
6	A	1	Total	C	O	S	0	0
			4	2	1	1		
6	A	1	Total	C	O	S	0	0
			4	2	1	1		
6	A	1	Total	C	O	S	0	0
			4	2	1	1		
6	A	1	Total	C	O	S	0	0
			4	2	1	1		
6	A	1	Total	C	O	S	0	0
			4	2	1	1		
6	A	1	Total	C	O	S	0	0
			4	2	1	1		
6	B	1	Total	C	O	S	0	0
			4	2	1	1		
6	B	1	Total	C	O	S	0	0
			4	2	1	1		

Continued on next page...

Continued from previous page...

Mol	Chain	Residues	Atoms				ZeroOcc	AltConf
6	B	1	Total 4	C 2	O 1	S 1	0	0
6	B	1	Total 4	C 2	O 1	S 1	0	0
6	B	1	Total 4	C 2	O 1	S 1	0	0
6	B	1	Total 4	C 2	O 1	S 1	0	0
6	B	1	Total 4	C 2	O 1	S 1	0	0

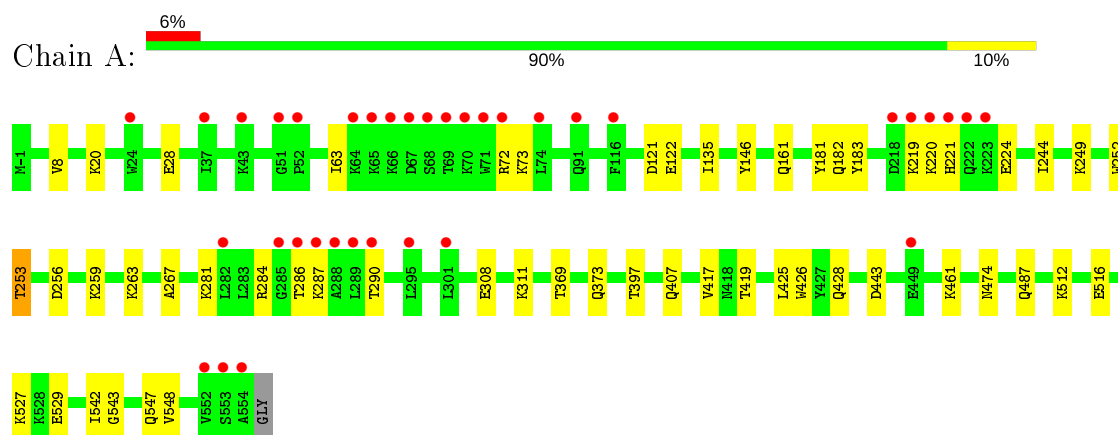
- Molecule 7 is water.

Mol	Chain	Residues	Atoms		ZeroOcc	AltConf
7	A	397	Total 397	O 397	0	0
7	B	253	Total 253	O 253	0	0

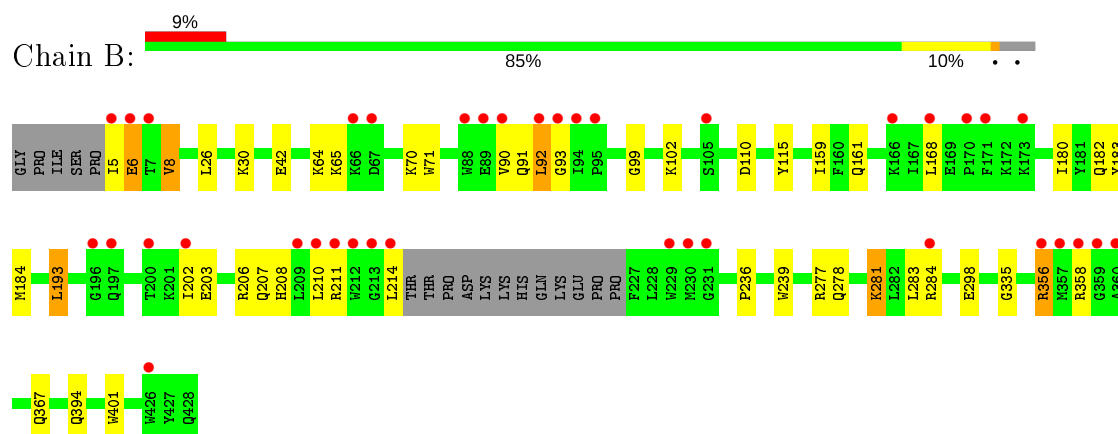
3 Residue-property plots [i](#)

These plots are drawn for all protein, RNA, DNA and oligosaccharide chains in the entry. The first graphic for a chain summarises the proportions of the various outlier classes displayed in the second graphic. The second graphic shows the sequence view annotated by issues in geometry and electron density. Residues are color-coded according to the number of geometric quality criteria for which they contain at least one outlier: green = 0, yellow = 1, orange = 2 and red = 3 or more. A red dot above a residue indicates a poor fit to the electron density ($RSRZ > 2$). Stretches of 2 or more consecutive residues without any outlier are shown as a green connector. Residues present in the sample, but not in the model, are shown in grey.

- Molecule 1: Reverse transcriptase/ribonuclease H



- Molecule 2: p51 RT



4 Data and refinement statistics

Property	Value	Source
Space group	C 1 2 1	Depositor
Cell constants a, b, c, α , β , γ	161.88Å 73.07Å 108.97Å 90.00° 100.48° 90.00°	Depositor
Resolution (Å)	42.93 – 2.10 42.93 – 2.10	Depositor EDS
% Data completeness (in resolution range)	99.6 (42.93-2.10) 93.2 (42.93-2.10)	Depositor EDS
R_{merge}	0.07	Depositor
R_{sym}	(Not available)	Depositor
$\langle I/\sigma(I) \rangle$ ¹	1.76 (at 2.10Å)	Xtriage
Refinement program	PHENIX (phenix.refine: 1.8.1_1168)	Depositor
R, R_{free}	0.182 , 0.225 0.183 , 0.226	Depositor DCC
R_{free} test set	3689 reflections (5.05%)	wwPDB-VP
Wilson B-factor (Å ²)	32.4	Xtriage
Anisotropy	0.177	Xtriage
Bulk solvent k_{sol} (e/Å ³), B_{sol} (Å ²)	0.34 , 54.1	EDS
L-test for twinning ²	$\langle L \rangle = 0.49$, $\langle L^2 \rangle = 0.33$	Xtriage
Estimated twinning fraction	No twinning to report.	Xtriage
F_o, F_c correlation	0.95	EDS
Total number of atoms	8702	wwPDB-VP
Average B, all atoms (Å ²)	41.0	wwPDB-VP

Xtriage's analysis on translational NCS is as follows: *The largest off-origin peak in the Patterson function is 5.23% of the height of the origin peak. No significant pseudotranslation is detected.*

¹Intensities estimated from amplitudes.

²Theoretical values of $\langle |L| \rangle$, $\langle L^2 \rangle$ for acentric reflections are 0.5, 0.333 respectively for untwinned datasets, and 0.375, 0.2 for perfectly twinned datasets.

5 Model quality

5.1 Standard geometry

Bond lengths and bond angles in the following residue types are not validated in this section: 1FE, MG, DMS, T27

The Z score for a bond length (or angle) is the number of standard deviations the observed value is removed from the expected value. A bond length (or angle) with $|Z| > 5$ is considered an outlier worth inspection. RMSZ is the root-mean-square of all Z scores of the bond lengths (or angles).

Mol	Chain	Bond lengths		Bond angles	
		RMSZ	# $ Z > 5$	RMSZ	# $ Z > 5$
1	A	0.35	0/4643	0.53	0/6311
2	B	0.35	0/3517	0.56	1/4776 (0.0%)
All	All	0.35	0/8160	0.54	1/11087 (0.0%)

There are no bond length outliers.

All (1) bond angle outliers are listed below:

Mol	Chain	Res	Type	Atoms	Z	Observed(°)	Ideal(°)
2	B	401	TRP	N-CA-C	5.48	125.79	111.00

There are no chirality outliers.

There are no planarity outliers.

5.2 Too-close contacts

In the following table, the Non-H and H(model) columns list the number of non-hydrogen atoms and hydrogen atoms in the chain respectively. The H(added) column lists the number of hydrogen atoms added and optimized by MolProbity. The Clashes column lists the number of clashes within the asymmetric unit, whereas Symm-Clashes lists symmetry related clashes.

Mol	Chain	Non-H	H(model)	H(added)	Clashes	Symm-Clashes
1	A	4525	0	4579	39	0
2	B	3419	0	3447	31	0
3	A	28	0	18	1	0
4	A	15	0	10	3	0
5	A	1	0	0	0	0
6	A	36	0	54	11	0
6	B	28	0	42	0	0
7	A	397	0	0	8	0

Continued on next page...

Continued from previous page...

Mol	Chain	Non-H	H(model)	H(added)	Clashes	Symm-Clashes
7	B	253	0	0	3	0
All	All	8702	0	8150	71	0

The all-atom clashscore is defined as the number of clashes found per 1000 atoms (including hydrogen atoms). The all-atom clashscore for this structure is 4.

All (71) close contacts within the same asymmetric unit are listed below, sorted by their clash magnitude.

Atom-1	Atom-2	Interatomic distance (Å)	Clash overlap (Å)
6:A:605:DMS:H13	2:B:26:LEU:H	1.26	0.97
1:A:428:GLN:H	6:A:606:DMS:H22	1.43	0.83
1:A:512:LYS:NZ	6:A:607:DMS:O	2.12	0.81
1:A:487:GLN:NE2	7:A:889:HOH:O	1.95	0.79
2:B:278:GLN:OE1	2:B:281:LYS:NZ	2.17	0.77
1:A:63:ILE:HD11	1:A:72:ARG:HE	1.51	0.76
4:A:602:1FE:H6	6:A:606:DMS:C2	2.00	0.75
2:B:91:GLN:NE2	2:B:161:GLN:OE1	2.21	0.74
1:A:428:GLN:H	6:A:606:DMS:C2	2.01	0.72
1:A:20:LYS:NZ	7:A:768:HOH:O	2.23	0.72
1:A:426:TRP:H	6:A:604:DMS:H23	1.59	0.67
1:A:527:LYS:NZ	7:A:1018:HOH:O	2.28	0.67
1:A:253:THR:HG22	1:A:256:ASP:H	1.60	0.67
1:A:73:LYS:NZ	1:A:146:TYR:OH	2.28	0.66
2:B:42:GLU:OE1	7:B:813:HOH:O	2.13	0.65
4:A:602:1FE:H6	6:A:606:DMS:H23	1.62	0.64
2:B:281:LYS:O	2:B:284:ARG:HG2	1.98	0.63
1:A:161:GLN:HG2	1:A:182:GLN:HE22	1.62	0.63
1:A:28:GLU:HG3	1:A:135:ILE:HD12	1.80	0.63
1:A:426:TRP:H	6:A:604:DMS:C2	2.11	0.63
1:A:542:ILE:HG23	2:B:283:LEU:HD13	1.81	0.63
1:A:281:LYS:HE2	1:A:284:ARG:HH22	1.65	0.61
2:B:30:LYS:NZ	7:B:805:HOH:O	2.33	0.61
1:A:474:ASN:H	6:A:608:DMS:H22	1.65	0.61
2:B:281:LYS:NZ	2:B:298:GLU:HG3	2.15	0.61
4:A:602:1FE:H6	6:A:606:DMS:H21	1.66	0.60
1:A:417:VAL:HG22	1:A:419:THR:HG23	1.84	0.60
1:A:543:GLY:HA3	2:B:283:LEU:O	2.02	0.60
1:A:529:GLU:OE1	7:A:975:HOH:O	2.16	0.59
2:B:281:LYS:HZ2	2:B:298:GLU:HG3	1.72	0.55
1:A:224:GLU:OE1	1:A:224:GLU:N	2.41	0.54
2:B:203:GLU:OE2	2:B:207:GLN:NE2	2.40	0.54

Continued on next page...

Continued from previous page...

Atom-1	Atom-2	Interatomic distance (Å)	Clash overlap (Å)
1:A:547:GLN:NE2	7:A:1074:HOH:O	2.42	0.53
3:A:601:T27:N3	3:A:601:T27:H15	2.26	0.51
1:A:425:LEU:HA	6:A:604:DMS:H22	1.92	0.51
1:A:407:GLN:HE22	2:B:394:GLN:HE21	1.58	0.50
1:A:259:LYS:HE3	1:A:263:LYS:HE3	1.92	0.50
2:B:168:LEU:HD23	2:B:180:ILE:HD13	1.93	0.50
1:A:308:GLU:OE1	1:A:311:LYS:NZ	2.44	0.50
2:B:92:LEU:H	2:B:92:LEU:HD23	1.76	0.50
1:A:181:TYR:CE2	1:A:183:TYR:HB2	2.47	0.50
1:A:122:GLU:OE2	7:A:982:HOH:O	2.20	0.49
1:A:244:ILE:HD13	1:A:267:ALA:HB2	1.94	0.49
2:B:210:LEU:HD12	2:B:214:LEU:HD11	1.94	0.48
2:B:210:LEU:HA	2:B:214:LEU:HD11	1.95	0.48
2:B:277:ARG:NH2	7:B:786:HOH:O	2.46	0.47
1:A:286:THR:HB	7:A:1072:HOH:O	2.14	0.47
1:A:249:LYS:HB2	1:A:252:TRP:CE2	2.50	0.47
2:B:5:ILE:HG23	2:B:6:GLU:OE2	2.15	0.47
1:A:397:THR:HG23	1:A:425:LEU:HG	1.98	0.46
2:B:8:VAL:HG11	2:B:159:ILE:HG12	1.96	0.46
1:A:461:LYS:NZ	7:A:950:HOH:O	2.39	0.46
1:A:443:ASP:HB2	1:A:548:VAL:HG13	1.98	0.45
2:B:115:TYR:OH	2:B:182:GLN:NE2	2.49	0.45
2:B:99:GLY:HA2	2:B:102:LYS:HD2	1.99	0.45
1:A:308:GLU:HA	1:A:311:LYS:HG3	1.98	0.45
2:B:183:TYR:CE2	2:B:184:MET:HG2	2.53	0.44
2:B:356:ARG:NH2	2:B:358:ARG:HB2	2.32	0.44
1:A:8:VAL:O	1:A:121:ASP:HB2	2.18	0.44
2:B:70:LYS:HA	2:B:70:LYS:HD2	1.90	0.43
2:B:236:PRO:HA	2:B:239:TRP:CD2	2.54	0.43
2:B:335:GLY:HA2	2:B:367:GLN:OE1	2.18	0.43
2:B:193:LEU:H	2:B:193:LEU:HG	1.61	0.42
1:A:516:GLU:H	1:A:516:GLU:CD	2.24	0.41
1:A:219:LYS:HA	1:A:219:LYS:HD2	1.90	0.41
2:B:65:LYS:NZ	2:B:110:ASP:OD1	2.54	0.41
2:B:64:LYS:HE2	2:B:71:TRP:CE2	2.56	0.41
2:B:202:ILE:HG22	2:B:206:ARG:NH1	2.36	0.41
1:A:369:THR:O	1:A:373[B]:GLN:HG2	2.20	0.40
1:A:63:ILE:HD11	1:A:72:ARG:NE	2.28	0.40
2:B:91:GLN:HG2	2:B:93:GLY:H	1.86	0.40

There are no symmetry-related clashes.

5.3 Torsion angles

5.3.1 Protein backbone

In the following table, the Percentiles column shows the percent Ramachandran outliers of the chain as a percentile score with respect to all X-ray entries followed by that with respect to entries of similar resolution.

The Analysed column shows the number of residues for which the backbone conformation was analysed, and the total number of residues.

Mol	Chain	Analysed	Favoured	Allowed	Outliers	Percentiles	
1	A	555/557 (100%)	544 (98%)	11 (2%)	0	100	100
2	B	409/429 (95%)	399 (98%)	10 (2%)	0	100	100
All	All	964/986 (98%)	943 (98%)	21 (2%)	0	100	100

There are no Ramachandran outliers to report.

5.3.2 Protein sidechains

In the following table, the Percentiles column shows the percent sidechain outliers of the chain as a percentile score with respect to all X-ray entries followed by that with respect to entries of similar resolution.

The Analysed column shows the number of residues for which the sidechain conformation was analysed, and the total number of residues.

Mol	Chain	Analysed	Rotameric	Outliers	Percentiles	
1	A	496/495 (100%)	491 (99%)	5 (1%)	76	82
2	B	375/390 (96%)	366 (98%)	9 (2%)	49	53
All	All	871/885 (98%)	857 (98%)	14 (2%)	62	69

All (14) residues with a non-rotameric sidechain are listed below:

Mol	Chain	Res	Type
1	A	220	LYS
1	A	221	HIS
1	A	253	THR
1	A	287	LYS
1	A	290	THR
2	B	6	GLU
2	B	8	VAL
2	B	90	VAL

Continued on next page...

Continued from previous page...

Mol	Chain	Res	Type
2	B	92	LEU
2	B	193	LEU
2	B	208	HIS
2	B	211	ARG
2	B	281	LYS
2	B	356	ARG

Some sidechains can be flipped to improve hydrogen bonding and reduce clashes. All (3) such sidechains are listed below:

Mol	Chain	Res	Type
1	A	182	GLN
2	B	91	GLN
2	B	394	GLN

5.3.3 RNA [i](#)

There are no RNA molecules in this entry.

5.4 Non-standard residues in protein, DNA, RNA chains [i](#)

There are no non-standard protein/DNA/RNA residues in this entry.

5.5 Carbohydrates [i](#)

There are no monosaccharides in this entry.

5.6 Ligand geometry [i](#)

Of 19 ligands modelled in this entry, 1 is monoatomic - leaving 18 for Mogul analysis.

In the following table, the Counts columns list the number of bonds (or angles) for which Mogul statistics could be retrieved, the number of bonds (or angles) that are observed in the model and the number of bonds (or angles) that are defined in the Chemical Component Dictionary. The Link column lists molecule types, if any, to which the group is linked. The Z score for a bond length (or angle) is the number of standard deviations the observed value is removed from the expected value. A bond length (or angle) with $|Z| > 2$ is considered an outlier worth inspection. RMSZ is the root-mean-square of all Z scores of the bond lengths (or angles).

Mol	Type	Chain	Res	Link	Bond lengths			Bond angles		
					Counts	RMSZ	# Z > 2	Counts	RMSZ	# Z > 2
6	DMS	A	612	-	3,3,3	0.68	0	3,3,3	0.52	0
6	DMS	B	507	-	3,3,3	0.60	0	3,3,3	0.49	0
6	DMS	A	611	-	3,3,3	0.64	0	3,3,3	0.54	0
6	DMS	A	608	-	3,3,3	0.68	0	3,3,3	0.72	0
6	DMS	A	605	-	3,3,3	0.64	0	3,3,3	0.67	0
6	DMS	B	504	-	3,3,3	0.69	0	3,3,3	1.05	0
6	DMS	A	610	-	3,3,3	0.65	0	3,3,3	0.64	0
6	DMS	A	606	-	3,3,3	0.47	0	3,3,3	0.30	0
4	1FE	A	602	-	12,16,16	3.14	5 (41%)	13,22,22	2.14	3 (23%)
3	T27	A	601	-	30,30,30	1.11	3 (10%)	39,40,40	1.90	5 (12%)
6	DMS	A	607	-	3,3,3	0.66	0	3,3,3	0.47	0
6	DMS	B	501	-	3,3,3	0.68	0	3,3,3	0.43	0
6	DMS	B	502	-	3,3,3	0.57	0	3,3,3	0.29	0
6	DMS	B	505	-	3,3,3	0.68	0	3,3,3	0.59	0
6	DMS	A	604	-	3,3,3	0.47	0	3,3,3	0.54	0
6	DMS	B	506	-	3,3,3	0.69	0	3,3,3	0.95	0
6	DMS	A	609	-	3,3,3	0.65	0	3,3,3	0.65	0
6	DMS	B	503	-	3,3,3	0.62	0	3,3,3	0.48	0

In the following table, the Chirals column lists the number of chiral outliers, the number of chiral centers analysed, the number of these observed in the model and the number defined in the Chemical Component Dictionary. Similar counts are reported in the Torsion and Rings columns. '-' means no outliers of that kind were identified.

Mol	Type	Chain	Res	Link	Chirals	Torsions	Rings
3	T27	A	601	-	-	0/13/14/14	0/3/3/3
4	1FE	A	602	-	-	0/6/6/6	0/2/2/2

All (8) bond length outliers are listed below:

Mol	Chain	Res	Type	Atoms	Z	Observed(Å)	Ideal(Å)
4	A	602	1FE	C3-C2	8.27	1.53	1.39
4	A	602	1FE	C8-C7	3.71	1.47	1.41
4	A	602	1FE	C1-N1	3.68	1.43	1.35
3	A	601	T27	C12-N4	3.64	1.43	1.36
4	A	602	1FE	C4-C5	3.39	1.47	1.41
3	A	601	T27	C11-N1	2.71	1.43	1.38
3	A	601	T27	C13-C19	2.34	1.49	1.44
4	A	602	1FE	C5-N2	2.18	1.46	1.38

All (8) bond angle outliers are listed below:

Mol	Chain	Res	Type	Atoms	Z	Observed(°)	Ideal(°)
3	A	601	T27	C9-N2-C12	6.69	121.38	115.45
3	A	601	T27	C10-C9-N2	-5.00	117.74	123.96
4	A	602	1FE	C6-N3-C7	4.88	113.46	103.78
4	A	602	1FE	C6-N2-C5	4.58	112.86	103.78
3	A	601	T27	N2-C12-N3	-4.42	122.36	126.55
3	A	601	T27	C9-C10-C11	4.28	119.56	116.76
4	A	602	1FE	C9-C1-N1	2.55	118.59	114.28
3	A	601	T27	C10-C11-N3	-2.20	119.46	123.16

There are no chirality outliers.

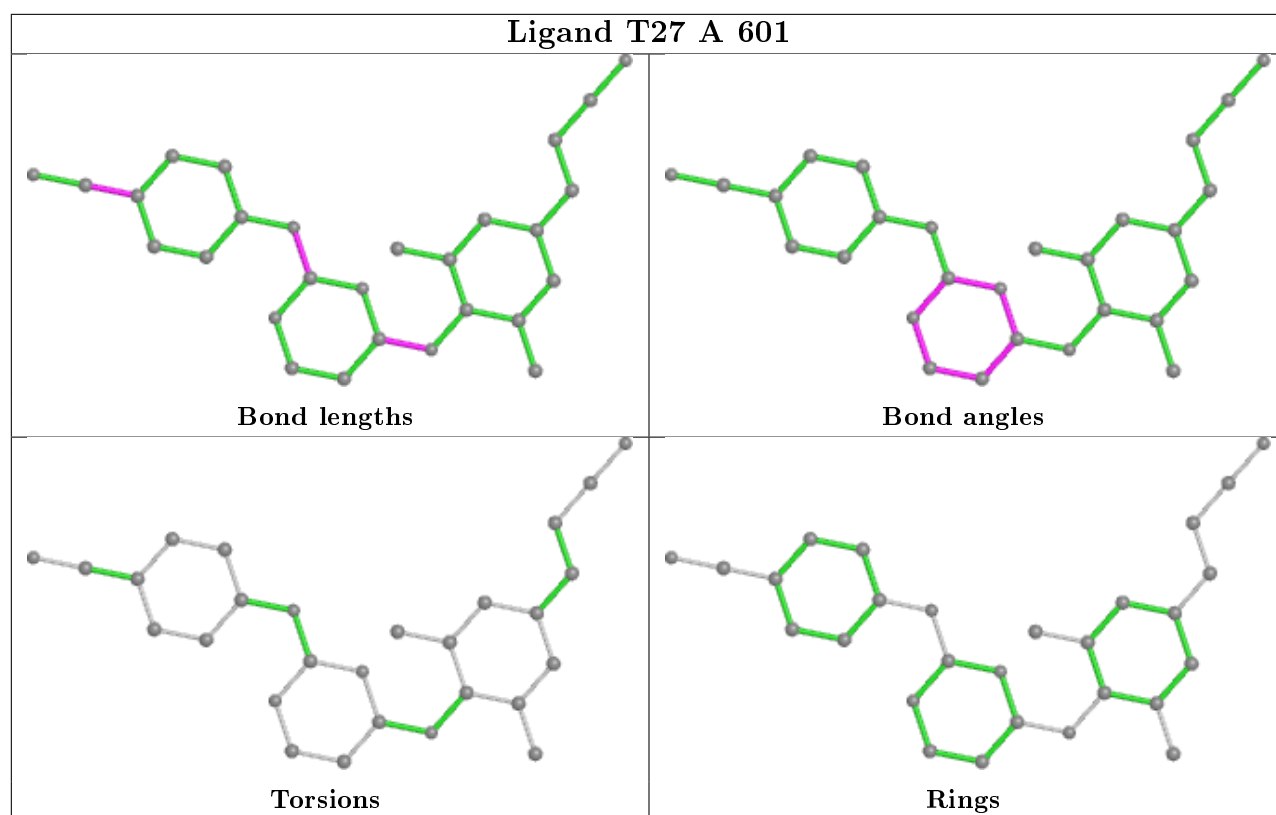
There are no torsion outliers.

There are no ring outliers.

7 monomers are involved in 12 short contacts:

Mol	Chain	Res	Type	Clashes	Symm-Clashes
6	A	608	DMS	1	0
6	A	605	DMS	1	0
6	A	606	DMS	5	0
4	A	602	1FE	3	0
3	A	601	T27	1	0
6	A	607	DMS	1	0
6	A	604	DMS	3	0

The following is a two-dimensional graphical depiction of Mogul quality analysis of bond lengths, bond angles, torsion angles, and ring geometry for all instances of the Ligand of Interest. In addition, ligands with molecular weight > 250 and outliers as shown on the validation Tables will also be included. For torsion angles, if less than 5% of the Mogul distribution of torsion angles is within 10 degrees of the torsion angle in question, then that torsion angle is considered an outlier. Any bond that is central to one or more torsion angles identified as an outlier by Mogul will be highlighted in the graph. For rings, the root-mean-square deviation (RMSD) between the ring in question and similar rings identified by Mogul is calculated over all ring torsion angles. If the average RMSD is greater than 60 degrees and the minimal RMSD between the ring in question and any Mogul-identified rings is also greater than 60 degrees, then that ring is considered an outlier. The outliers are highlighted in purple. The color gray indicates Mogul did not find sufficient equivalents in the CSD to analyse the geometry.



5.7 Other polymers [i](#)

There are no such residues in this entry.

5.8 Polymer linkage issues [i](#)

There are no chain breaks in this entry.

6 Fit of model and data

6.1 Protein, DNA and RNA chains

In the following table, the column labelled ‘#RSRZ> 2’ contains the number (and percentage) of RSRZ outliers, followed by percent RSRZ outliers for the chain as percentile scores relative to all X-ray entries and entries of similar resolution. The OWAB column contains the minimum, median, 95th percentile and maximum values of the occupancy-weighted average B-factor per residue. The column labelled ‘Q< 0.9’ lists the number of (and percentage) of residues with an average occupancy less than 0.9.

Mol	Chain	Analysed	<RSRZ>	#RSRZ>2	OWAB(Å ²)	Q<0.9
1	A	556/557 (99%)	0.10	36 (6%) 18 23	15, 33, 77, 131	0
2	B	412/429 (96%)	0.46	38 (9%) 9 11	16, 37, 95, 137	0
All	All	968/986 (98%)	0.26	74 (7%) 13 18	15, 35, 90, 137	0

All (74) RSRZ outliers are listed below:

Mol	Chain	Res	Type	RSRZ
2	B	92	LEU	11.3
2	B	214	LEU	9.7
1	A	67	ASP	8.5
2	B	90	VAL	7.9
2	B	93	GLY	7.9
2	B	213	GLY	6.9
2	B	89	GLU	6.2
1	A	222	GLN	6.2
1	A	221	HIS	6.1
1	A	69	THR	6.1
1	A	68	SER	5.8
1	A	286	THR	5.5
1	A	287	LYS	5.4
1	A	218	ASP	4.8
1	A	66	LYS	4.6
2	B	357	MET	4.5
2	B	67	ASP	4.5
1	A	289	LEU	4.5
2	B	211	ARG	4.4
1	A	285	GLY	4.3
1	A	288	ALA	4.2
2	B	170	PRO	4.2
1	A	219	LYS	4.2
2	B	94	ILE	4.2

Continued on next page...

Continued from previous page...

Mol	Chain	Res	Type	RSRZ
2	B	88	TRP	4.1
2	B	284	ARG	3.9
1	A	220	LYS	3.8
2	B	209	LEU	3.8
1	A	37	ILE	3.7
1	A	24	TRP	3.7
1	A	290	THR	3.6
2	B	359	GLY	3.5
2	B	5	ILE	3.5
1	A	91	GLN	3.2
2	B	7	THR	3.1
2	B	231	GLY	3.1
2	B	95	PRO	3.0
1	A	70	LYS	3.0
1	A	71	TRP	3.0
2	B	358	ARG	3.0
1	A	64	LYS	3.0
2	B	230	MET	2.9
1	A	65	LYS	2.9
2	B	166	LYS	2.9
2	B	6	GLU	2.9
2	B	197	GLN	2.9
1	A	72	ARG	2.7
2	B	229	TRP	2.6
1	A	553	SER	2.6
1	A	554	ALA	2.6
1	A	552	VAL	2.6
1	A	116	PHE	2.6
2	B	210	LEU	2.6
2	B	173	LYS	2.5
2	B	200	THR	2.5
2	B	356	ARG	2.5
1	A	52	PRO	2.5
2	B	168	LEU	2.5
1	A	223	LYS	2.5
1	A	295	LEU	2.5
1	A	282	LEU	2.4
2	B	426	TRP	2.4
1	A	74	LEU	2.4
1	A	449	GLU	2.4
1	A	43	LYS	2.3
2	B	105	SER	2.3

Continued on next page...

Continued from previous page...

Mol	Chain	Res	Type	RSRZ
2	B	360	ALA	2.3
1	A	301	LEU	2.3
1	A	51	GLY	2.2
2	B	202	ILE	2.2
2	B	212	TRP	2.2
2	B	66	LYS	2.2
2	B	196	GLY	2.1
2	B	171	PHE	2.0

6.2 Non-standard residues in protein, DNA, RNA chains ⓘ

There are no non-standard protein/DNA/RNA residues in this entry.

6.3 Carbohydrates ⓘ

There are no monosaccharides in this entry.

6.4 Ligands ⓘ

In the following table, the Atoms column lists the number of modelled atoms in the group and the number defined in the chemical component dictionary. The B-factors column lists the minimum, median, 95th percentile and maximum values of B factors of atoms in the group. The column labelled 'Q< 0.9' lists the number of atoms with occupancy less than 0.9.

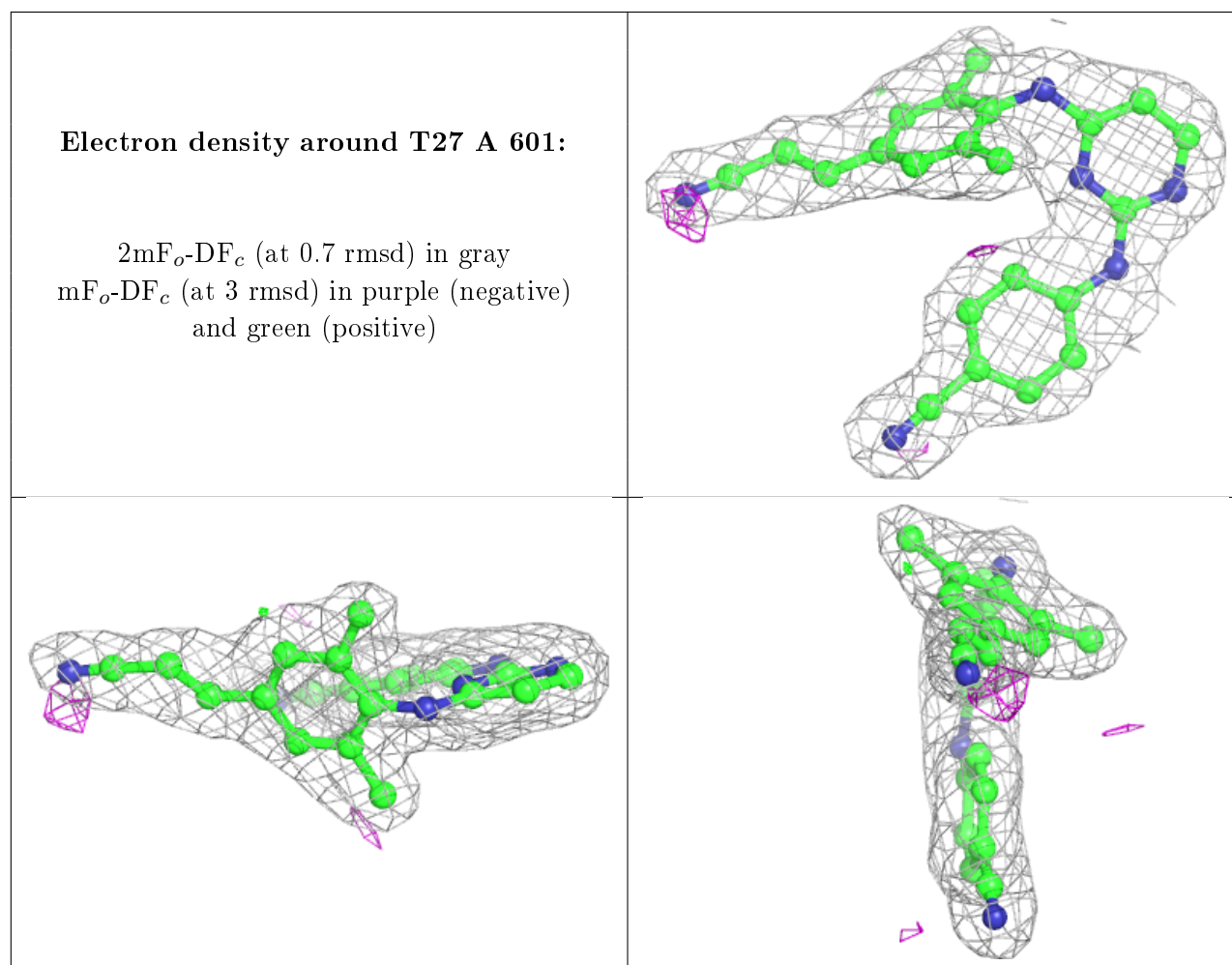
Mol	Type	Chain	Res	Atoms	RSCC	RSR	B-factors(Å ²)	Q<0.9
6	DMS	B	507	4/4	0.83	0.38	30,57,106,108	0
6	DMS	A	608	4/4	0.83	0.21	64,65,77,82	0
4	1FE	A	602	15/15	0.88	0.16	34,41,54,55	0
6	DMS	A	605	4/4	0.89	0.16	14,14,66,71	0
5	MG	A	603	1/1	0.89	0.15	42,42,42,42	0
6	DMS	A	604	4/4	0.90	0.20	13,33,49,55	0
6	DMS	B	503	4/4	0.90	0.30	26,87,108,110	0
6	DMS	A	612	4/4	0.92	0.15	53,74,79,83	0
6	DMS	B	505	4/4	0.94	0.24	64,66,66,114	0
6	DMS	B	506	4/4	0.94	0.16	28,42,55,101	0
6	DMS	A	610	4/4	0.95	0.14	62,68,76,80	0
6	DMS	A	607	4/4	0.95	0.09	40,56,58,60	0
6	DMS	A	609	4/4	0.95	0.14	52,66,73,76	0
3	T27	A	601	28/28	0.96	0.11	16,22,25,27	0
6	DMS	A	611	4/4	0.97	0.19	30,74,74,75	0

Continued on next page...

Continued from previous page...

Mol	Type	Chain	Res	Atoms	RSCC	RSR	B-factors(\AA^2)	Q<0.9
6	DMS	B	501	4/4	0.97	0.11	35,44,45,46	0
6	DMS	A	606	4/4	0.98	0.12	11,24,26,36	0
6	DMS	B	504	4/4	0.98	0.16	30,31,36,74	0
6	DMS	B	502	4/4	0.98	0.14	27,33,39,46	0

The following is a graphical depiction of the model fit to experimental electron density of all instances of the Ligand of Interest. In addition, ligands with molecular weight > 250 and outliers as shown on the geometry validation Tables will also be included. Each fit is shown from different orientation to approximate a three-dimensional view.



6.5 Other polymers ⓘ

There are no such residues in this entry.