



Full wwPDB X-ray Structure Validation Report ⓘ

Aug 25, 2020 – 03:34 PM BST

PDB ID : 5IE6
Title : Crystal structure of a lactonase mutant in complex with substrate b
Authors : Zheng, Y.Y.; Xu, Z.X.; Liu, W.D.; Chen, C.C.; Guo, R.T.
Deposited on : 2016-02-25
Resolution : 2.67 Å(reported)

This is a Full wwPDB X-ray Structure Validation Report for a publicly released PDB entry.

We welcome your comments at validation@mail.wwpdb.org

A user guide is available at

<https://www.wwpdb.org/validation/2017/XrayValidationReportHelp>

with specific help available everywhere you see the ⓘ symbol.

The following versions of software and data (see [references ⓘ](#)) were used in the production of this report:

MolProbity : 4.02b-467
Mogul : 1.8.5 (274361), CSD as541be (2020)
Xtriage (Phenix) : 1.13
EDS : 2.13
buster-report : 1.1.7 (2018)
Percentile statistics : 20191225.v01 (using entries in the PDB archive December 25th 2019)
Refmac : 5.8.0158
CCP4 : 7.0.044 (Gargrove)
Ideal geometry (proteins) : Engh & Huber (2001)
Ideal geometry (DNA, RNA) : Parkinson et al. (1996)
Validation Pipeline (wwPDB-VP) : 2.13

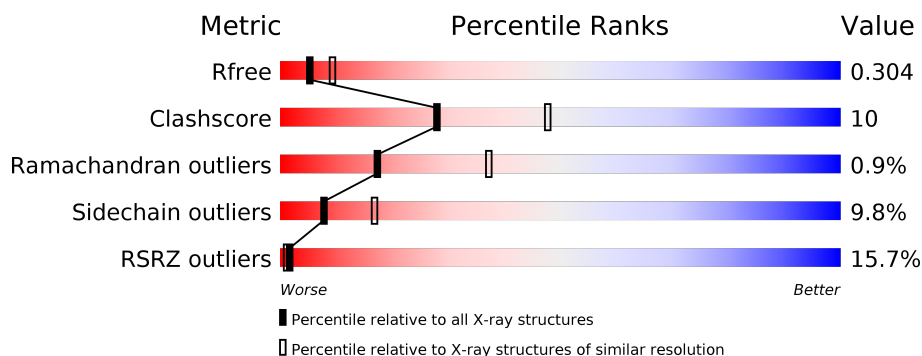
1 Overall quality at a glance

The following experimental techniques were used to determine the structure:

X-RAY DIFFRACTION

The reported resolution of this entry is 2.67 Å.

Percentile scores (ranging between 0-100) for global validation metrics of the entry are shown in the following graphic. The table shows the number of entries on which the scores are based.



Metric	Whole archive (#Entries)	Similar resolution (#Entries, resolution range(Å))
R_{free}	130704	3863 (2.70-2.66)
Clashscore	141614	4210 (2.70-2.66)
Ramachandran outliers	138981	4141 (2.70-2.66)
Sidechain outliers	138945	4141 (2.70-2.66)
RSRZ outliers	127900	3780 (2.70-2.66)

The table below summarises the geometric issues observed across the polymeric chains and their fit to the electron density. The red, orange, yellow and green segments on the lower bar indicate the fraction of residues that contain outliers for ≥ 3 , 2, 1 and 0 types of geometric quality criteria respectively. A grey segment represents the fraction of residues that are not modelled. The numeric value for each fraction is indicated below the corresponding segment, with a dot representing fractions $\leq 5\%$. The upper red bar (where present) indicates the fraction of residues that have poor fit to the electron density. The numeric value is given above the bar.

Mol	Chain	Length	Quality of chain
1	A	264	<div> <div>4%</div> <div> <div></div> <div>77%</div> <div>19%</div> <div>.</div> </div> </div>
1	B	264	<div> <div>6%</div> <div> <div></div> <div>82%</div> <div>16%</div> <div>.</div> </div> </div>
1	C	264	<div> <div>30%</div> <div> <div>30%</div> <div>14%</div> <div>.</div> <div>52%</div> </div> </div>

2 Entry composition [i](#)

There are 3 unique types of molecules in this entry. The entry contains 5302 atoms, of which 0 are hydrogens and 0 are deuteriums.

In the tables below, the ZeroOcc column contains the number of atoms modelled with zero occupancy, the AltConf column contains the number of residues with at least one atom in alternate conformation and the Trace column contains the number of residues modelled with at most 2 atoms.

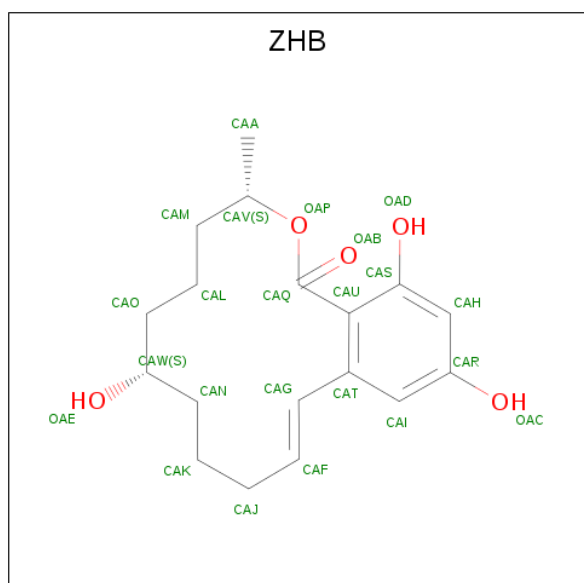
- Molecule 1 is a protein called Zearalenone hydrolase.

Mol	Chain	Residues	Atoms					ZeroOcc	AltConf	Trace
1	A	264	Total	C	N	O	S	0	0	0
			2020	1282	341	386	11			
1	B	264	Total	C	N	O	S	0	0	0
			2020	1282	341	386	11			
1	C	127	Total	C	N	O	S	0	0	0
			988	639	159	185	5			

There are 3 discrepancies between the modelled and reference sequences:

Chain	Residue	Modelled	Actual	Comment	Reference
A	102	ALA	SER	engineered mutation	UNP Q8NKB0
B	102	ALA	SER	engineered mutation	UNP Q8NKB0
C	102	ALA	SER	engineered mutation	UNP Q8NKB0

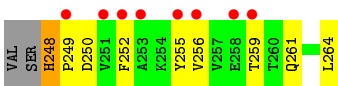
- Molecule 2 is (3S,7S,11E)-7,14,16-trihydroxy-3-methyl-3,4,5,6,7,8,9,10-octahydro-1H-2-benzoxacyclotetradecin-1-one (three-letter code: ZHB) (formula: C₁₈H₂₄O₅).



Mol	Chain	Residues	Atoms			ZeroOcc	AltConf
2	A	1	Total	C	O	0	0
			23	18	5		
2	B	1	Total	C	O	0	0
			23	18	5		

- Molecule 3 is water.

Mol	Chain	Residues	Atoms		ZeroOcc	AltConf
3	A	75	Total	O	0	0
			75	75		
3	B	63	Total	O	0	0
			63	63		
3	C	90	Total	O	0	0
			90	90		



4 Data and refinement statistics

Property	Value	Source
Space group	P 61 2 2	Depositor
Cell constants a, b, c, α , β , γ	86.04Å 86.04Å 470.11Å 90.00° 90.00° 120.00°	Depositor
Resolution (Å)	24.94 – 2.67 24.94 – 2.67	Depositor EDS
% Data completeness (in resolution range)	98.2 (24.94-2.67) 98.4 (24.94-2.67)	Depositor EDS
R_{merge}	0.04	Depositor
R_{sym}	(Not available)	Depositor
$\langle I/\sigma(I) \rangle$ ¹	7.27 (at 2.68Å)	Xtriage
Refinement program	REFMAC 5.8.0135	Depositor
R, R_{free}	0.221 , 0.279 0.252 , 0.304	Depositor DCC
R_{free} test set	1517 reflections (5.03%)	wwPDB-VP
Wilson B-factor (Å ²)	48.8	Xtriage
Anisotropy	0.826	Xtriage
Bulk solvent k_{sol} (e/Å ³), B_{sol} (Å ²)	0.33 , 46.5	EDS
L-test for twinning ²	$\langle L \rangle = 0.51$, $\langle L^2 \rangle = 0.35$	Xtriage
Estimated twinning fraction	No twinning to report.	Xtriage
F_o, F_c correlation	0.91	EDS
Total number of atoms	5302	wwPDB-VP
Average B, all atoms (Å ²)	45.0	wwPDB-VP

Xtriage's analysis on translational NCS is as follows: *The largest off-origin peak in the Patterson function is 4.07% of the height of the origin peak. No significant pseudotranslation is detected.*

¹Intensities estimated from amplitudes.

²Theoretical values of $\langle |L| \rangle$, $\langle L^2 \rangle$ for acentric reflections are 0.5, 0.333 respectively for untwinned datasets, and 0.375, 0.2 for perfectly twinned datasets.

5 Model quality ⓘ

5.1 Standard geometry ⓘ

Bond lengths and bond angles in the following residue types are not validated in this section: ZHB

The Z score for a bond length (or angle) is the number of standard deviations the observed value is removed from the expected value. A bond length (or angle) with $|Z| > 5$ is considered an outlier worth inspection. RMSZ is the root-mean-square of all Z scores of the bond lengths (or angles).

Mol	Chain	Bond lengths		Bond angles	
		RMSZ	$\# Z > 5$	RMSZ	$\# Z > 5$
1	A	0.53	0/2071	0.76	1/2829 (0.0%)
1	B	0.52	0/2071	0.72	0/2829
1	C	0.53	1/1012 (0.1%)	0.61	0/1379
All	All	0.53	1/5154 (0.0%)	0.72	1/7037 (0.0%)

Chiral center outliers are detected by calculating the chiral volume of a chiral center and verifying if the center is modelled as a planar moiety or with the opposite hand. A planarity outlier is detected by checking planarity of atoms in a peptide group, atoms in a mainchain group or atoms of a sidechain that are expected to be planar.

Mol	Chain	#Chirality outliers	#Planarity outliers
1	C	0	3

All (1) bond length outliers are listed below:

Mol	Chain	Res	Type	Atoms	Z	Observed(Å)	Ideal(Å)
1	C	62	SER	C-O	5.63	1.34	1.23

All (1) bond angle outliers are listed below:

Mol	Chain	Res	Type	Atoms	Z	Observed(°)	Ideal(°)
1	A	49	GLN	N-CA-C	-6.15	94.40	111.00

There are no chirality outliers.

All (3) planarity outliers are listed below:

Mol	Chain	Res	Type	Group
1	C	216	THR	Peptide
1	C	217	PRO	Peptide

Continued on next page...

Continued from previous page...

Mol	Chain	Res	Type	Group
1	C	221	PHE	Peptide

5.2 Too-close contacts ⓘ

In the following table, the Non-H and H(model) columns list the number of non-hydrogen atoms and hydrogen atoms in the chain respectively. The H(added) column lists the number of hydrogen atoms added and optimized by MolProbity. The Clashes column lists the number of clashes within the asymmetric unit, whereas Symm-Clashes lists symmetry related clashes.

Mol	Chain	Non-H	H(model)	H(added)	Clashes	Symm-Clashes
1	A	2020	0	1991	32	0
1	B	2020	0	1991	37	0
1	C	988	0	956	28	0
2	A	23	0	0	2	0
2	B	23	0	0	3	0
3	A	75	0	0	1	0
3	B	63	0	0	0	0
3	C	90	0	0	0	0
All	All	5302	0	4938	99	0

The all-atom clashscore is defined as the number of clashes found per 1000 atoms (including hydrogen atoms). The all-atom clashscore for this structure is 10.

All (99) close contacts within the same asymmetric unit are listed below, sorted by their clash magnitude.

Atom-1	Atom-2	Interatomic distance (Å)	Clash overlap (Å)
1:B:158:VAL:HG11	1:B:242:HIS:CD2	1.95	1.00
1:B:158:VAL:CG1	1:B:242:HIS:CD2	2.53	0.91
1:B:76:THR:HG22	1:B:79:LYS:H	1.36	0.90
1:B:154:MET:HE3	1:B:154:MET:HA	1.60	0.84
1:B:38:MET:HE2	1:B:245:TYR:HE1	1.43	0.82
1:B:154:MET:CE	1:B:154:MET:HA	2.10	0.81
1:A:38:MET:HE2	1:A:245:TYR:HE1	1.44	0.80
1:C:216:THR:HB	1:C:217:PRO:CD	2.11	0.80
1:B:38:MET:CE	1:B:245:TYR:HE1	1.99	0.74
1:C:255:TYR:O	1:C:259:THR:OG1	2.03	0.73
1:A:134:HIS:CE1	1:A:135:LEU:HD13	2.24	0.73
1:A:67:ALA:HB1	1:A:71:THR:HG21	1.71	0.71
1:C:248:HIS:N	1:C:249:PRO:HD3	2.06	0.70
1:B:109:VAL:HG22	1:B:196:PRO:HG2	1.75	0.69

Continued on next page...

Continued from previous page...

Atom-1	Atom-2	Interatomic distance (Å)	Clash overlap (Å)
1:A:68:PRO:O	1:A:71:THR:HB	1.93	0.68
1:B:76:THR:CG2	1:B:79:LYS:H	2.06	0.68
1:A:38:MET:CE	1:A:245:TYR:HE1	2.07	0.68
1:A:59:PRO:HB2	1:A:71:THR:HG23	1.78	0.66
1:B:81:ALA:HB1	1:B:111:LEU:HD23	1.77	0.66
1:C:216:THR:HB	1:C:217:PRO:HD3	1.79	0.63
1:B:109:VAL:CG2	1:B:196:PRO:HG2	2.29	0.63
1:A:81:ALA:HB1	1:A:111:LEU:HD13	1.83	0.61
1:A:59:PRO:CB	1:A:71:THR:HG23	2.31	0.61
1:C:101:CYS:O	1:C:105:ALA:HB2	2.02	0.60
1:C:99:TRP:CE2	1:C:252:PHE:HE1	2.20	0.60
1:A:102:ALA:HB1	2:A:300:ZHB:CAQ	2.32	0.60
1:B:158:VAL:HG11	1:B:242:HIS:NE2	2.17	0.59
1:C:84:VAL:HG11	1:C:111:LEU:HD21	1.85	0.59
1:B:84:VAL:CG2	1:B:111:LEU:HD11	2.32	0.58
1:C:101:CYS:HA	1:C:125:HIS:HB2	1.87	0.57
1:B:38:MET:CE	1:B:245:TYR:CE1	2.85	0.56
1:B:158:VAL:O	1:B:158:VAL:HG12	2.05	0.56
1:B:84:VAL:HG21	1:B:111:LEU:HD11	1.89	0.55
1:A:129:THR:HG22	1:A:130:LYS:HG3	1.87	0.55
1:A:38:MET:CE	1:A:245:TYR:CE1	2.89	0.55
1:A:38:MET:HE1	1:A:243:PHE:CD1	2.42	0.55
1:B:38:MET:HE1	1:B:243:PHE:CD1	2.42	0.55
1:C:180:TYR:HB3	1:C:181:PRO:HD3	1.89	0.55
1:B:158:VAL:HG13	1:B:241:MET:HE2	1.89	0.54
1:B:144:GLU:OE2	1:B:177:HIS:CE1	2.61	0.54
1:A:81:ALA:CB	1:A:111:LEU:HD13	2.38	0.54
1:A:47:ALA:O	1:A:49:GLN:O	2.26	0.53
1:B:187:TYR:CD2	1:B:191:ILE:HD13	2.43	0.53
1:C:220:SER:HB2	1:C:221:PHE:CD2	2.44	0.53
1:B:35:GLU:OE2	1:B:37:GLN:HB3	2.09	0.52
1:C:261:GLN:HA	1:C:264:LEU:HG	1.92	0.51
1:A:144:GLU:OE2	1:A:177:HIS:CE1	2.65	0.50
1:C:101:CYS:HA	1:C:125:HIS:CB	2.42	0.50
1:C:59:PRO:HB2	1:C:71:THR:HG22	1.94	0.50
1:A:38:MET:HE1	1:A:243:PHE:HD1	1.77	0.49
1:B:76:THR:HG23	1:B:78:GLN:H	1.76	0.49
1:B:126:GLU:OE1	1:B:242:HIS:ND1	2.46	0.48
2:B:301:ZHB:OAP	2:B:301:ZHB:CAG	2.61	0.48
1:A:187:TYR:CD2	1:A:191:ILE:HD13	2.48	0.48
1:B:158:VAL:CG1	1:B:242:HIS:NE2	2.75	0.48

Continued on next page...

Continued from previous page...

Atom-1	Atom-2	Interatomic distance (Å)	Clash overlap (Å)
1:A:35:GLU:OE2	1:A:37:GLN:HB3	2.13	0.48
1:B:38:MET:HE1	1:B:243:PHE:HD1	1.78	0.48
1:C:29:VAL:HG23	1:C:99:TRP:O	2.14	0.47
1:A:81:ALA:HB1	1:A:111:LEU:CD1	2.45	0.47
1:A:129:THR:CG2	3:A:451:HOH:O	2.62	0.47
1:C:252:PHE:O	1:C:256:VAL:HG23	2.15	0.46
1:B:75:VAL:HG12	1:B:76:THR:N	2.31	0.45
1:B:216:THR:O	1:B:217:PRO:C	2.55	0.45
1:C:121:ASN:HA	1:C:207:PRO:HB2	1.97	0.45
1:B:154:MET:O	1:B:159:SER:HB3	2.16	0.45
1:A:48:ALA:C	1:A:49:GLN:O	2.48	0.44
1:A:99:TRP:CH2	1:A:125:HIS:HB2	2.53	0.44
1:C:30:PRO:HG2	1:C:58:MET:HG2	2.00	0.44
1:C:26:VAL:N	1:C:52:ARG:O	2.50	0.44
1:C:97:THR:HG1	1:C:120:ARG:HB3	1.83	0.44
2:A:300:ZHB:OAD	2:A:300:ZHB:OAB	2.34	0.44
1:C:58:MET:SD	1:C:59:PRO:HD3	2.57	0.44
1:B:102:ALA:HB1	2:B:301:ZHB:CAQ	2.48	0.43
1:A:253:ALA:O	1:A:257:VAL:HG13	2.19	0.43
1:C:112:LEU:HD21	1:C:206:LYS:HB3	2.01	0.43
1:A:126:GLU:OE1	1:A:242:HIS:ND1	2.52	0.43
2:B:301:ZHB:CAA	2:B:301:ZHB:OAB	2.67	0.43
1:A:122:ALA:O	1:A:208:LEU:HD12	2.20	0.42
1:A:147:SER:HB3	1:A:177:HIS:CD2	2.54	0.42
1:A:146:ILE:CG2	1:A:150:LEU:HD22	2.49	0.42
1:C:197:VAL:O	1:C:197:VAL:HG12	2.19	0.42
1:A:157:ASP:HB2	1:A:158:VAL:HG13	2.02	0.42
1:C:109:VAL:CG1	1:C:196:PRO:HG2	2.49	0.41
1:A:154:MET:O	1:A:159:SER:HB3	2.20	0.41
1:A:218:THR:OG1	1:B:216:THR:O	2.25	0.41
1:B:187:TYR:HB2	1:B:188:PRO:HD3	2.02	0.41
1:C:75:VAL:O	1:C:191:ILE:HG13	2.20	0.41
1:A:19:GLN:HA	1:A:53:VAL:O	2.21	0.41
1:B:76:THR:HG22	1:B:79:LYS:HB2	2.01	0.41
1:B:158:VAL:O	1:B:158:VAL:CG1	2.68	0.41
1:B:253:ALA:O	1:B:257:VAL:HG13	2.21	0.41
1:B:154:MET:CE	1:B:243:PHE:HE2	2.33	0.41
1:C:248:HIS:N	1:C:249:PRO:CD	2.79	0.41
1:B:35:GLU:OE2	1:B:37:GLN:CB	2.70	0.40
1:C:109:VAL:HG12	1:C:196:PRO:HG2	2.03	0.40
1:B:97:THR:OG1	1:B:121:ASN:ND2	2.55	0.40

Continued on next page...

Continued from previous page...

Atom-1	Atom-2	Interatomic distance (Å)	Clash overlap (Å)
1:C:104:GLY:O	1:C:107:THR:HB	2.21	0.40
1:C:53:VAL:O	1:C:53:VAL:HG12	2.22	0.40
1:A:211:THR:HG21	1:A:238:LEU:HD22	2.03	0.40

There are no symmetry-related clashes.

5.3 Torsion angles [i](#)

5.3.1 Protein backbone [i](#)

In the following table, the Percentiles column shows the percent Ramachandran outliers of the chain as a percentile score with respect to all X-ray entries followed by that with respect to entries of similar resolution.

The Analysed column shows the number of residues for which the backbone conformation was analysed, and the total number of residues.

Mol	Chain	Analysed	Favoured	Allowed	Outliers	Percentiles	
1	A	262/264 (99%)	249 (95%)	11 (4%)	2 (1%)	19	40
1	B	262/264 (99%)	248 (95%)	12 (5%)	2 (1%)	19	40
1	C	109/264 (41%)	95 (87%)	12 (11%)	2 (2%)	8	19
All	All	633/792 (80%)	592 (94%)	35 (6%)	6 (1%)	17	37

All (6) Ramachandran outliers are listed below:

Mol	Chain	Res	Type
1	C	106	SER
1	C	181	PRO
1	A	161	GLY
1	A	187	TYR
1	B	187	TYR
1	B	161	GLY

5.3.2 Protein sidechains [i](#)

In the following table, the Percentiles column shows the percent sidechain outliers of the chain as a percentile score with respect to all X-ray entries followed by that with respect to entries of similar resolution.

The Analysed column shows the number of residues for which the sidechain conformation was

analysed, and the total number of residues.

Mol	Chain	Analysed	Rotameric	Outliers	Percentiles	
1	A	220/220 (100%)	197 (90%)	23 (10%)	7	14
1	B	220/220 (100%)	199 (90%)	21 (10%)	8	18
1	C	109/220 (50%)	99 (91%)	10 (9%)	9	19
All	All	549/660 (83%)	495 (90%)	54 (10%)	8	17

All (54) residues with a non-rotameric sidechain are listed below:

Mol	Chain	Res	Type
1	A	41	SER
1	A	56	PHE
1	A	71	THR
1	A	82	SER
1	A	111	LEU
1	A	113	LEU
1	A	121	ASN
1	A	129	THR
1	A	132	LEU
1	A	135	LEU
1	A	141	LEU
1	A	142	GLU
1	A	145	GLU
1	A	150	LEU
1	A	182	VAL
1	A	191	ILE
1	A	197	VAL
1	A	200	LEU
1	A	203	LEU
1	A	235	ILE
1	A	238	LEU
1	A	250	ASP
1	A	262	LYS
1	B	41	SER
1	B	76	THR
1	B	82	SER
1	B	84	VAL
1	B	109	VAL
1	B	113	LEU
1	B	121	ASN
1	B	131	LEU
1	B	132	LEU

Continued on next page...

Continued from previous page...

Mol	Chain	Res	Type
1	B	141	LEU
1	B	154	MET
1	B	162	SER
1	B	172	VAL
1	B	176	LEU
1	B	191	ILE
1	B	200	LEU
1	B	203	LEU
1	B	235	ILE
1	B	250	ASP
1	B	262	LYS
1	B	264	LEU
1	C	22	THR
1	C	62	SER
1	C	111	LEU
1	C	113	LEU
1	C	121	ASN
1	C	180	TYR
1	C	198	LYS
1	C	220	SER
1	C	248	HIS
1	C	250	ASP

Some sidechains can be flipped to improve hydrogen bonding and reduce clashes. All (14) such sidechains are listed below:

Mol	Chain	Res	Type
1	A	121	ASN
1	A	134	HIS
1	A	152	ASN
1	A	156	ASN
1	A	166	GLN
1	A	177	HIS
1	B	121	ASN
1	B	137	ASN
1	B	166	GLN
1	B	177	HIS
1	B	261	GLN
1	C	121	ASN
1	C	224	ASN
1	C	248	HIS

5.3.3 RNA ⓘ

There are no RNA molecules in this entry.

5.4 Non-standard residues in protein, DNA, RNA chains ⓘ

There are no non-standard protein/DNA/RNA residues in this entry.

5.5 Carbohydrates ⓘ

There are no monosaccharides in this entry.

5.6 Ligand geometry ⓘ

2 ligands are modelled in this entry.

In the following table, the Counts columns list the number of bonds (or angles) for which Mogul statistics could be retrieved, the number of bonds (or angles) that are observed in the model and the number of bonds (or angles) that are defined in the Chemical Component Dictionary. The Link column lists molecule types, if any, to which the group is linked. The Z score for a bond length (or angle) is the number of standard deviations the observed value is removed from the expected value. A bond length (or angle) with $|Z| > 2$ is considered an outlier worth inspection. RMSZ is the root-mean-square of all Z scores of the bond lengths (or angles).

Mol	Type	Chain	Res	Link	Bond lengths			Bond angles		
					Counts	RMSZ	# Z > 2	Counts	RMSZ	# Z > 2
2	ZHB	B	301	-	24,24,24	1.37	3 (12%)	32,32,32	1.28	3 (9%)
2	ZHB	A	300	-	24,24,24	1.57	4 (16%)	32,32,32	1.61	6 (18%)

In the following table, the Chirals column lists the number of chiral outliers, the number of chiral centers analysed, the number of these observed in the model and the number defined in the Chemical Component Dictionary. Similar counts are reported in the Torsion and Rings columns. '-' means no outliers of that kind were identified.

Mol	Type	Chain	Res	Link	Chirals	Torsions	Rings
2	ZHB	B	301	-	-	7/22/22/22	0/1/2/2
2	ZHB	A	300	-	-	8/22/22/22	0/1/2/2

All (7) bond length outliers are listed below:

Mol	Chain	Res	Type	Atoms	Z	Observed(Å)	Ideal(Å)
2	A	300	ZHB	CAT-CAG	-4.64	1.39	1.47

Continued on next page...

Continued from previous page...

Mol	Chain	Res	Type	Atoms	Z	Observed(Å)	Ideal(Å)
2	A	300	ZHB	CAU-CAQ	-4.59	1.39	1.50
2	B	301	ZHB	CAT-CAG	-3.97	1.41	1.47
2	B	301	ZHB	CAU-CAQ	-3.81	1.41	1.50
2	B	301	ZHB	CAG-CAF	2.67	1.40	1.31
2	A	300	ZHB	CAG-CAF	2.61	1.39	1.31
2	A	300	ZHB	CAJ-CAF	-2.05	1.38	1.50

All (9) bond angle outliers are listed below:

Mol	Chain	Res	Type	Atoms	Z	Observed(°)	Ideal(°)
2	A	300	ZHB	CAT-CAG-CAF	-4.45	115.92	125.52
2	A	300	ZHB	CAK-CAN-CAW	-3.62	104.44	114.85
2	B	301	ZHB	CAV-OAP-CAQ	3.50	123.70	117.61
2	A	300	ZHB	CAA-CAV-CAM	-2.99	105.91	113.97
2	A	300	ZHB	CAL-CAO-CAW	-2.87	106.60	114.85
2	B	301	ZHB	OAP-CAV-CAA	2.75	114.21	107.93
2	B	301	ZHB	CAJ-CAF-CAG	-2.62	120.52	125.45
2	A	300	ZHB	CAN-CAK-CAJ	-2.50	109.06	114.49
2	A	300	ZHB	OAD-CAS-CAU	-2.21	117.00	121.14

There are no chirality outliers.

All (15) torsion outliers are listed below:

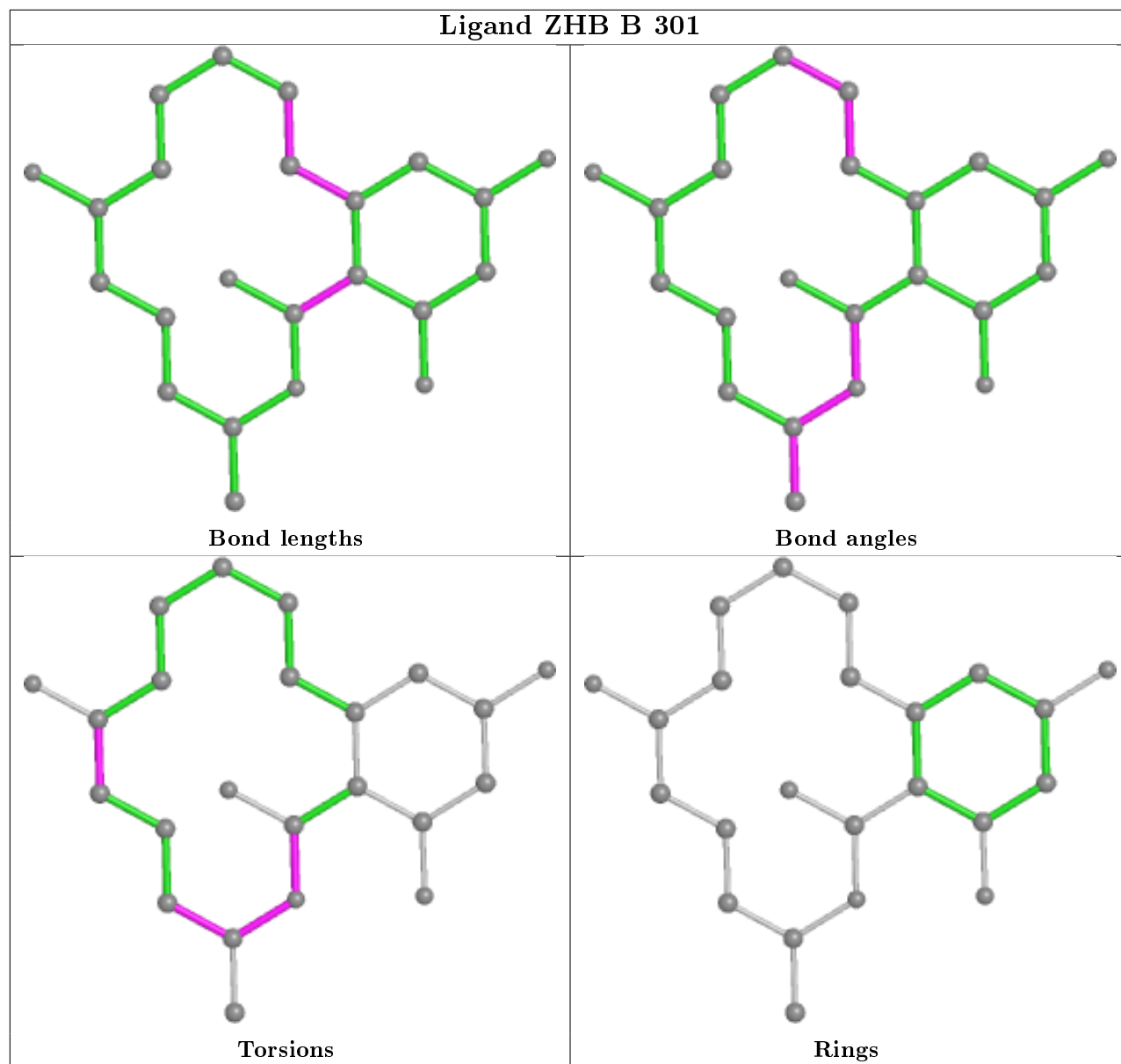
Mol	Chain	Res	Type	Atoms
2	B	301	ZHB	CAL-CAO-CAW-CAN
2	B	301	ZHB	CAL-CAM-CAV-CAA
2	B	301	ZHB	CAL-CAM-CAV-OAP
2	B	301	ZHB	CAA-CAV-OAP-CAQ
2	A	300	ZHB	CAA-CAV-OAP-CAQ
2	A	300	ZHB	CAK-CAN-CAW-CAO
2	B	301	ZHB	CAU-CAQ-OAP-CAV
2	B	301	ZHB	CAL-CAO-CAW-OAE
2	A	300	ZHB	CAK-CAN-CAW-OAE
2	B	301	ZHB	OAB-CAQ-OAP-CAV
2	A	300	ZHB	CAU-CAQ-OAP-CAV
2	A	300	ZHB	CAL-CAO-CAW-OAE
2	A	300	ZHB	CAL-CAO-CAW-CAN
2	A	300	ZHB	CAG-CAF-CAJ-CAK
2	A	300	ZHB	CAJ-CAF-CAG-CAT

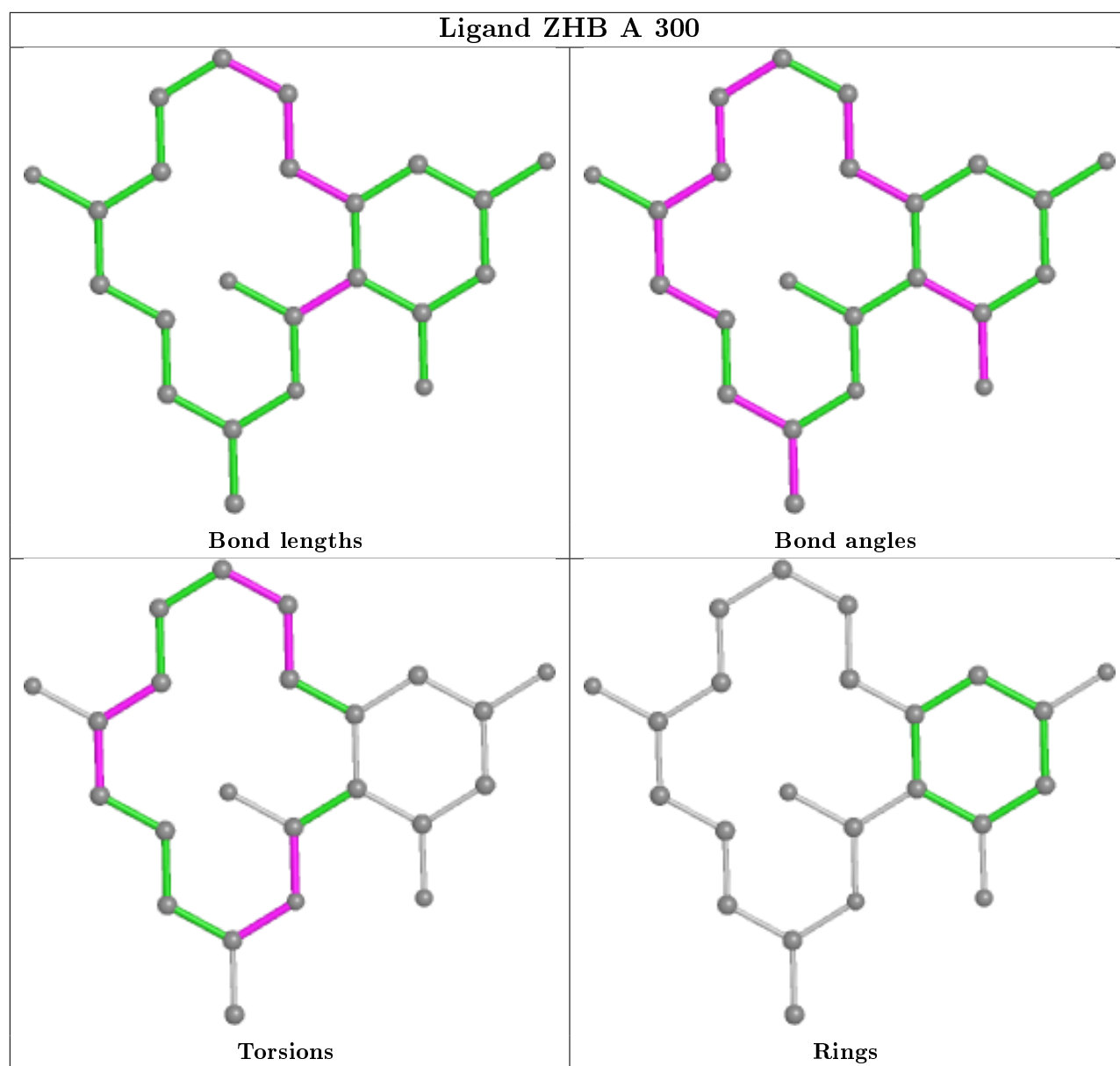
There are no ring outliers.

2 monomers are involved in 5 short contacts:

Mol	Chain	Res	Type	Clashes	Symm-Clashes
2	B	301	ZHB	3	0
2	A	300	ZHB	2	0

The following is a two-dimensional graphical depiction of Mogul quality analysis of bond lengths, bond angles, torsion angles, and ring geometry for all instances of the Ligand of Interest. In addition, ligands with molecular weight > 250 and outliers as shown on the validation Tables will also be included. For torsion angles, if less than 5% of the Mogul distribution of torsion angles is within 10 degrees of the torsion angle in question, then that torsion angle is considered an outlier. Any bond that is central to one or more torsion angles identified as an outlier by Mogul will be highlighted in the graph. For rings, the root-mean-square deviation (RMSD) between the ring in question and similar rings identified by Mogul is calculated over all ring torsion angles. If the average RMSD is greater than 60 degrees and the minimal RMSD between the ring in question and any Mogul-identified rings is also greater than 60 degrees, then that ring is considered an outlier. The outliers are highlighted in purple. The color gray indicates Mogul did not find sufficient equivalents in the CSD to analyse the geometry.





5.7 Other polymers [i](#)

There are no such residues in this entry.

5.8 Polymer linkage issues [i](#)

There are no chain breaks in this entry.

6 Fit of model and data

6.1 Protein, DNA and RNA chains

In the following table, the column labelled ‘#RSRZ> 2’ contains the number (and percentage) of RSRZ outliers, followed by percent RSRZ outliers for the chain as percentile scores relative to all X-ray entries and entries of similar resolution. The OWAB column contains the minimum, median, 95th percentile and maximum values of the occupancy-weighted average B-factor per residue. The column labelled ‘Q< 0.9’ lists the number of (and percentage) of residues with an average occupancy less than 0.9.

Mol	Chain	Analysed	<RSRZ>	#RSRZ>2	OWAB(Å ²)	Q<0.9
1	A	264/264 (100%)	-0.05	10 (3%) 40 38	24, 32, 55, 67	0
1	B	264/264 (100%)	0.05	15 (5%) 23 22	25, 36, 56, 74	0
1	C	127/264 (48%)	2.69	78 (61%) 0 0	50, 74, 91, 100	0
All	All	655/792 (82%)	0.52	103 (15%) 2 1	24, 37, 82, 100	0

All (103) RSRZ outliers are listed below:

Mol	Chain	Res	Type	RSRZ
1	C	24	PRO	7.2
1	C	220	SER	7.1
1	C	219	GLU	7.1
1	C	202	ALA	6.9
1	C	72	TYR	6.8
1	C	60	GLY	6.3
1	C	18	GLU	6.2
1	C	182	VAL	6.2
1	C	193	PRO	6.2
1	C	251	VAL	6.0
1	C	181	PRO	5.9
1	C	90	ALA	5.8
1	C	16	TYR	5.7
1	C	115	TYR	5.6
1	C	191	ILE	5.3
1	C	252	PHE	5.0
1	C	253	ALA	4.8
1	C	73	THR	4.7
1	C	192	PRO	4.7
1	C	89	ASP	4.7
1	C	218	THR	4.5
1	C	67	ALA	4.4
1	C	200	LEU	4.4

Continued on next page...

Continued from previous page...

Mol	Chain	Res	Type	RSRZ
1	C	183	TRP	4.4
1	C	69	PRO	4.2
1	C	217	PRO	4.0
1	B	29	VAL	4.0
1	C	76	THR	4.0
1	C	222	PHE	3.9
1	A	29	VAL	3.9
1	C	75	VAL	3.8
1	C	108	VAL	3.8
1	C	180	TYR	3.8
1	C	19	GLN	3.8
1	C	105	ALA	3.8
1	C	71	THR	3.7
1	C	259	THR	3.6
1	C	74	GLU	3.6
1	C	70	GLU	3.5
1	C	249	PRO	3.5
1	C	87	VAL	3.5
1	C	203	LEU	3.4
1	C	20	GLU	3.4
1	B	166	GLN	3.4
1	C	17	TYR	3.3
1	C	62	SER	3.3
1	C	28	LEU	3.3
1	C	110	ALA	3.3
1	C	61	MET	3.3
1	C	21	GLY	3.3
1	C	109	VAL	3.2
1	C	15	TRP	3.2
1	A	32	GLY	3.2
1	A	30	PRO	3.1
1	C	68	PRO	3.1
1	B	101	CYS	3.1
1	A	48	ALA	3.1
1	C	114	GLY	3.1
1	C	29	VAL	3.0
1	C	223	ASP	3.0
1	C	22	THR	3.0
1	A	102	ALA	3.0
1	C	117	ASP	3.0
1	C	92	ASP	2.9
1	C	58	MET	2.9

Continued on next page...

Continued from previous page...

Mol	Chain	Res	Type	RSRZ
1	C	91	LEU	2.9
1	B	100	GLY	2.8
1	C	83	TYR	2.8
1	C	256	VAL	2.7
1	C	258	GLU	2.7
1	B	103	SER	2.7
1	B	104	GLY	2.6
1	C	197	VAL	2.6
1	C	194	SER	2.6
1	C	205	GLY	2.6
1	C	102	ALA	2.5
1	B	102	ALA	2.4
1	A	103	SER	2.4
1	C	204	ARG	2.4
1	C	99	TRP	2.4
1	A	101	CYS	2.4
1	C	116	PRO	2.4
1	C	25	ASP	2.4
1	B	32	GLY	2.4
1	B	99	TRP	2.3
1	B	30	PRO	2.3
1	B	105	ALA	2.3
1	A	28	LEU	2.3
1	C	111	LEU	2.3
1	C	201	GLU	2.3
1	C	112	LEU	2.3
1	C	59	PRO	2.3
1	B	117	ASP	2.3
1	C	198	LYS	2.2
1	B	28	LEU	2.2
1	C	107	THR	2.2
1	C	255	TYR	2.1
1	A	250	ASP	2.1
1	C	123	MET	2.1
1	C	82	SER	2.1
1	B	98	VAL	2.1
1	A	100	GLY	2.1
1	B	27	VAL	2.0

6.2 Non-standard residues in protein, DNA, RNA chains ⓘ

There are no non-standard protein/DNA/RNA residues in this entry.

6.3 Carbohydrates [i](#)

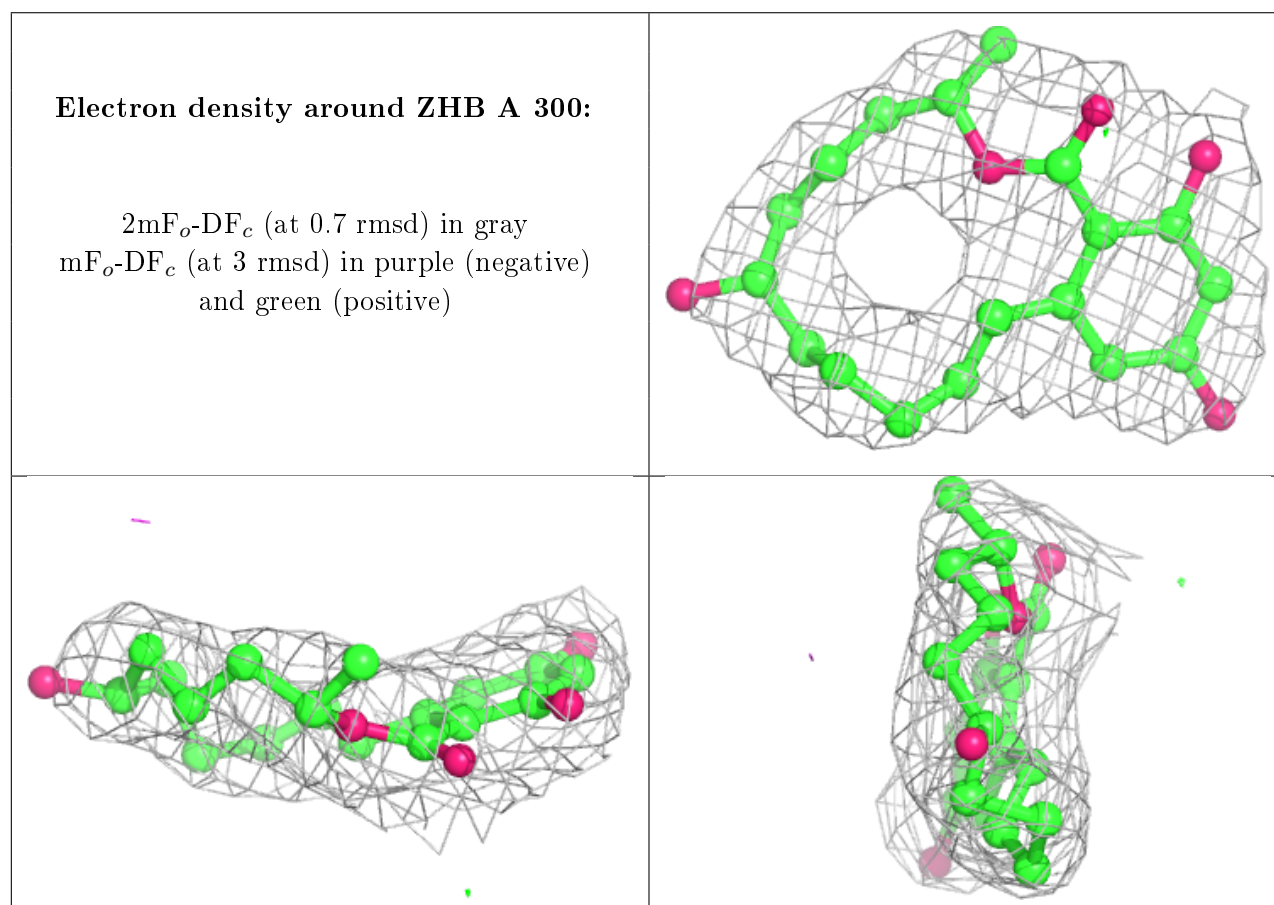
There are no monosaccharides in this entry.

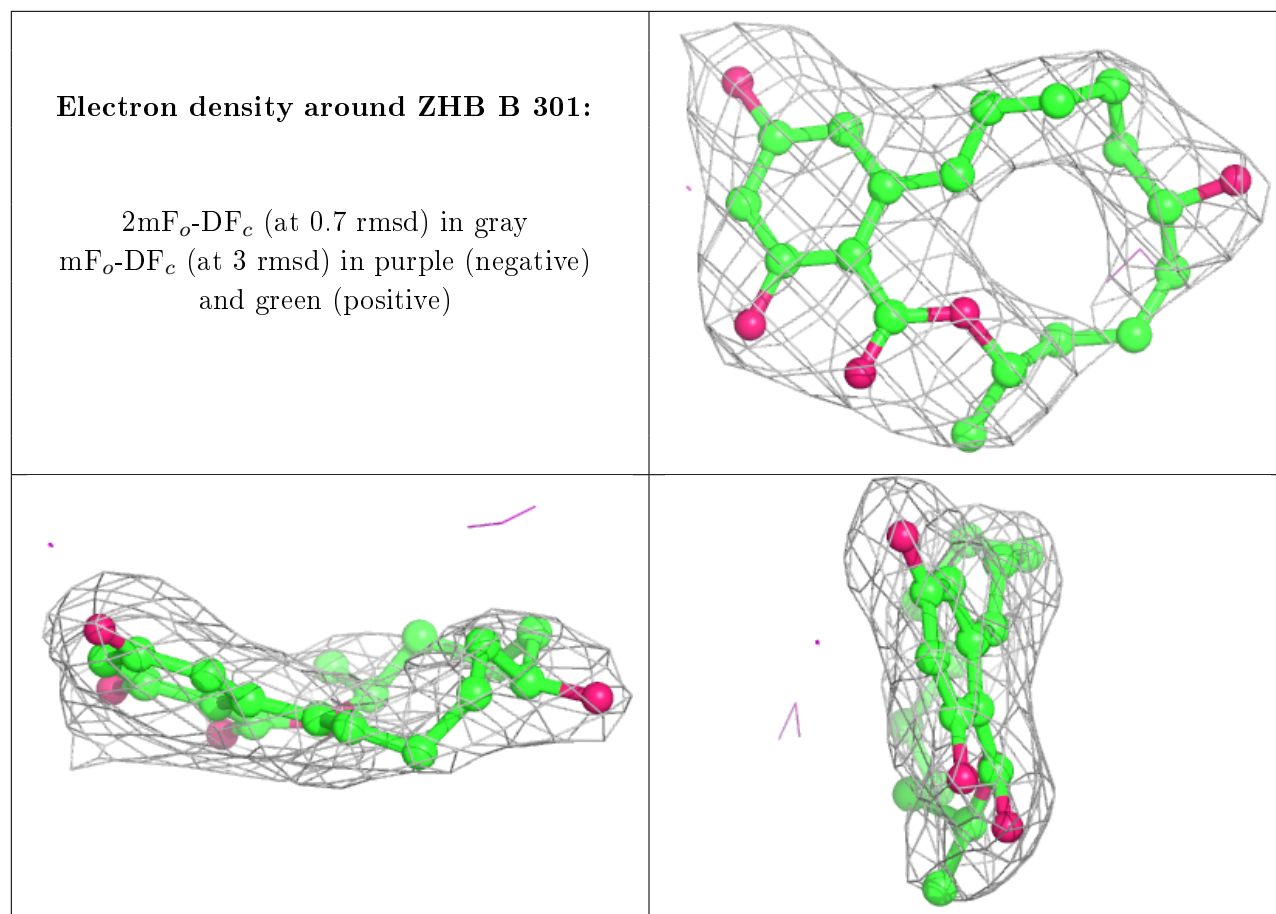
6.4 Ligands [i](#)

In the following table, the Atoms column lists the number of modelled atoms in the group and the number defined in the chemical component dictionary. The B-factors column lists the minimum, median, 95th percentile and maximum values of B factors of atoms in the group. The column labelled 'Q<0.9' lists the number of atoms with occupancy less than 0.9.

Mol	Type	Chain	Res	Atoms	RSCC	RSR	B-factors(\AA^2)	Q<0.9
2	ZHB	A	300	23/23	0.94	0.35	50,61,68,72	0
2	ZHB	B	301	23/23	0.95	0.28	39,50,76,78	0

The following is a graphical depiction of the model fit to experimental electron density of all instances of the Ligand of Interest. In addition, ligands with molecular weight > 250 and outliers as shown on the geometry validation Tables will also be included. Each fit is shown from different orientation to approximate a three-dimensional view.





6.5 Other polymers [i](#)

There are no such residues in this entry.