



Full wwPDB X-ray Structure Validation Report ⓘ

May 25, 2020 – 02:41 am BST

PDB ID : 3IFX
Title : Crystal structure of the Spin-labeled KcsA mutant V48R1
Authors : Cieslak, J.A.; Focia, P.J.; Gross, A.
Deposited on : 2009-07-26
Resolution : 3.56 Å(reported)

This is a Full wwPDB X-ray Structure Validation Report for a publicly released PDB entry.

We welcome your comments at validation@mail.wwpdb.org

A user guide is available at

<https://www.wwpdb.org/validation/2017/XrayValidationReportHelp>

with specific help available everywhere you see the ⓘ symbol.

The following versions of software and data (see [references ⓘ](#)) were used in the production of this report:

MolProbity : 4.02b-467
Mogul : 1.8.5 (274361), CSD as541be (2020)
Xtriage (Phenix) : 1.13
EDS : 2.11
buster-report : 1.1.7 (2018)
Percentile statistics : 20191225.v01 (using entries in the PDB archive December 25th 2019)
Refmac : 5.8.0158
CCP4 : 7.0.044 (Gargrove)
Ideal geometry (proteins) : Engh & Huber (2001)
Ideal geometry (DNA, RNA) : Parkinson et al. (1996)
Validation Pipeline (wwPDB-VP) : 2.11

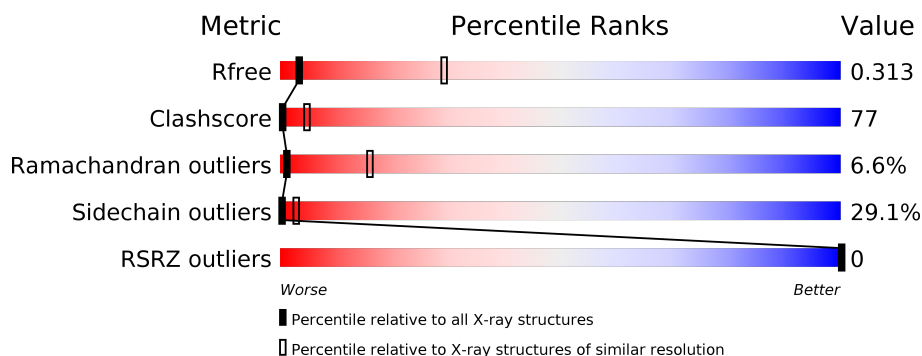
1 Overall quality at a glance

The following experimental techniques were used to determine the structure:

X-RAY DIFFRACTION, EPR

The reported resolution of this entry is 3.56 Å.

Percentile scores (ranging between 0-100) for global validation metrics of the entry are shown in the following graphic. The table shows the number of entries on which the scores are based.



Metric	Whole archive (#Entries)	Similar resolution (#Entries, resolution range(Å))
R_{free}	130704	1020 (3.62-3.50)
Clashscore	141614	1100 (3.62-3.50)
Ramachandran outliers	138981	1065 (3.62-3.50)
Sidechain outliers	138945	1066 (3.62-3.50)
RSRZ outliers	127900	1009 (3.64-3.48)

The table below summarises the geometric issues observed across the polymeric chains and their fit to the electron density. The red, orange, yellow and green segments on the lower bar indicate the fraction of residues that contain outliers for ≥ 3 , 2, 1 and 0 types of geometric quality criteria respectively. A grey segment represents the fraction of residues that are not modelled. The numeric value for each fraction is indicated below the corresponding segment, with a dot representing fractions $\leq 5\%$. The upper red bar (where present) indicates the fraction of residues that have poor fit to the electron density. The numeric value is given above the bar.

Mol	Chain	Length	Quality of chain
1	A	129	
1	B	129	
1	C	129	
1	D	129	

The following table lists non-polymeric compounds, carbohydrate monomers and non-standard residues in protein, DNA, RNA chains that are outliers for geometric or electron-density-fit crite-

ria:

Mol	Type	Chain	Res	Chirality	Geometry	Clashes	Electron density
3	MTN	D	248	-	-	X	-
4	TBA	B	203	-	-	X	-

2 Entry composition

There are 5 unique types of molecules in this entry. The entry contains 2832 atoms, of which 0 are hydrogens and 0 are deuteriums.

In the tables below, the ZeroOcc column contains the number of atoms modelled with zero occupancy, the AltConf column contains the number of residues with at least one atom in alternate conformation and the Trace column contains the number of residues modelled with at most 2 atoms.

- Molecule 1 is a protein called Voltage-gated potassium channel.

Mol	Chain	Residues	Atoms					ZeroOcc	AltConf	Trace
1	A	97	Total	C	N	O	S	0	2	0
			712	477	112	121	2			
1	B	97	Total	C	N	O	S	0	1	0
			662	433	109	118	2			
1	C	97	Total	C	N	O	S	0	1	0
			708	472	113	121	2			
1	D	97	Total	C	N	O	S	0	1	0
			698	465	113	118	2			

There are 28 discrepancies between the modelled and reference sequences:

Chain	Residue	Modelled	Actual	Comment	Reference
A	48	CYS	VAL	ENGINEERED MUTATION	UNP P0A334
A	124	HIS	-	EXPRESSION TAG	UNP P0A334
A	125	HIS	-	EXPRESSION TAG	UNP P0A334
A	126	HIS	-	EXPRESSION TAG	UNP P0A334
A	127	HIS	-	EXPRESSION TAG	UNP P0A334
A	128	HIS	-	EXPRESSION TAG	UNP P0A334
A	129	HIS	-	EXPRESSION TAG	UNP P0A334
B	48	CYS	VAL	ENGINEERED MUTATION	UNP P0A334
B	124	HIS	-	EXPRESSION TAG	UNP P0A334
B	125	HIS	-	EXPRESSION TAG	UNP P0A334
B	126	HIS	-	EXPRESSION TAG	UNP P0A334
B	127	HIS	-	EXPRESSION TAG	UNP P0A334
B	128	HIS	-	EXPRESSION TAG	UNP P0A334
B	129	HIS	-	EXPRESSION TAG	UNP P0A334
C	48	CYS	VAL	ENGINEERED MUTATION	UNP P0A334
C	124	HIS	-	EXPRESSION TAG	UNP P0A334
C	125	HIS	-	EXPRESSION TAG	UNP P0A334
C	126	HIS	-	EXPRESSION TAG	UNP P0A334
C	127	HIS	-	EXPRESSION TAG	UNP P0A334
C	128	HIS	-	EXPRESSION TAG	UNP P0A334
C	129	HIS	-	EXPRESSION TAG	UNP P0A334

Continued on next page...

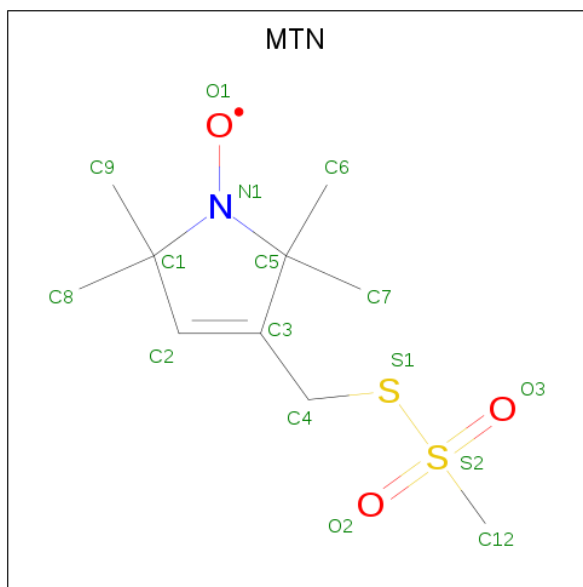
Continued from previous page...

Chain	Residue	Modelled	Actual	Comment	Reference
D	48	CYS	VAL	ENGINEERED MUTATION	UNP P0A334
D	124	HIS	-	EXPRESSION TAG	UNP P0A334
D	125	HIS	-	EXPRESSION TAG	UNP P0A334
D	126	HIS	-	EXPRESSION TAG	UNP P0A334
D	127	HIS	-	EXPRESSION TAG	UNP P0A334
D	128	HIS	-	EXPRESSION TAG	UNP P0A334
D	129	HIS	-	EXPRESSION TAG	UNP P0A334

- Molecule 2 is POTASSIUM ION (three-letter code: K) (formula: K).

Mol	Chain	Residues	Atoms	ZeroOcc	AltConf
2	B	1	Total K 1 1	0	0
2	A	1	Total K 1 1	0	0

- Molecule 3 is S-[(1-oxyl-2,2,5,5-tetramethyl-2,5-dihydro-1H-pyrrol-3-yl)methyl] methanesulfonothioate (three-letter code: MTN) (formula: C₁₀H₁₈NO₃S₂).



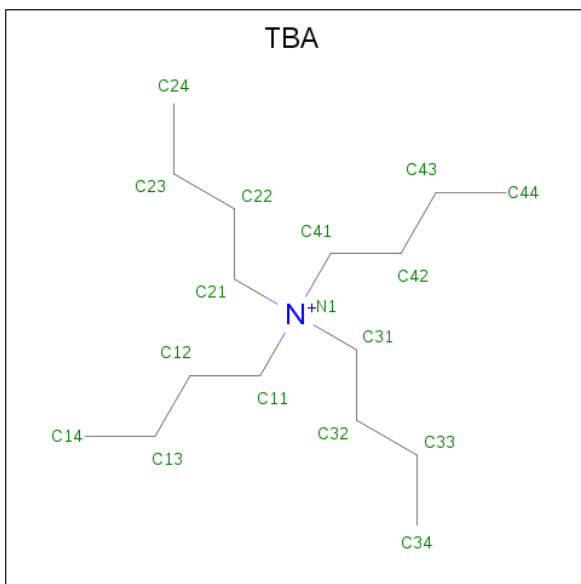
Mol	Chain	Residues	Atoms	ZeroOcc	AltConf
3	A	1	Total C S 3 2 1	0	0
3	B	1	Total C N O S 12 9 1 1 1	0	0
3	C	1	Total C S 3 2 1	0	0

Continued on next page...

Continued from previous page...

Mol	Chain	Residues	Atoms					ZeroOcc	AltConf
3	D	1	Total	C	N	O	S	0	0
			12	9	1	1	1		

- Molecule 4 is TETRABUTYLAMMONIUM ION (three-letter code: TBA) (formula: $C_{16}H_{36}N$).



Mol	Chain	Residues	Atoms			ZeroOcc	AltConf
4	B	1	Total	C	N	0	0
			17	16	1		

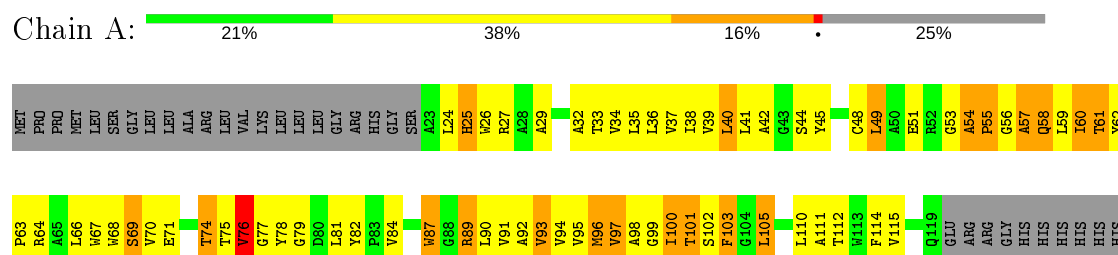
- Molecule 5 is water.

Mol	Chain	Residues	Atoms		ZeroOcc	AltConf
5	B	2	Total	O	0	0
			2	2		
5	D	1	Total	O	0	0
			1	1		

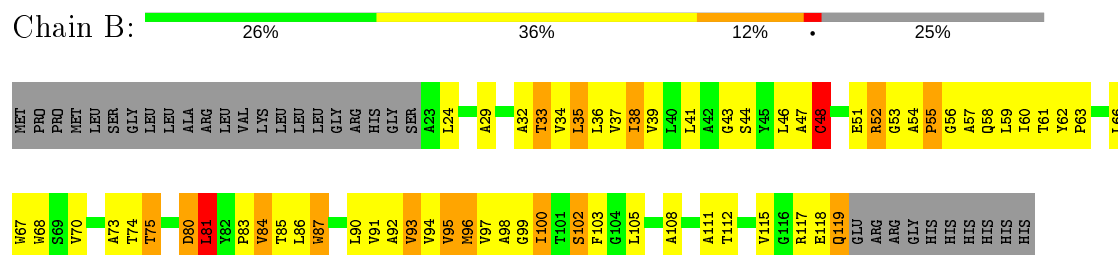
3 Residue-property plots

These plots are drawn for all protein, RNA and DNA chains in the entry. The first graphic for a chain summarises the proportions of the various outlier classes displayed in the second graphic. The second graphic shows the sequence view annotated by issues in geometry and electron density. Residues are color-coded according to the number of geometric quality criteria for which they contain at least one outlier: green = 0, yellow = 1, orange = 2 and red = 3 or more. A red dot above a residue indicates a poor fit to the electron density ($RSRZ > 2$). Stretches of 2 or more consecutive residues without any outlier are shown as a green connector. Residues present in the sample, but not in the model, are shown in grey.

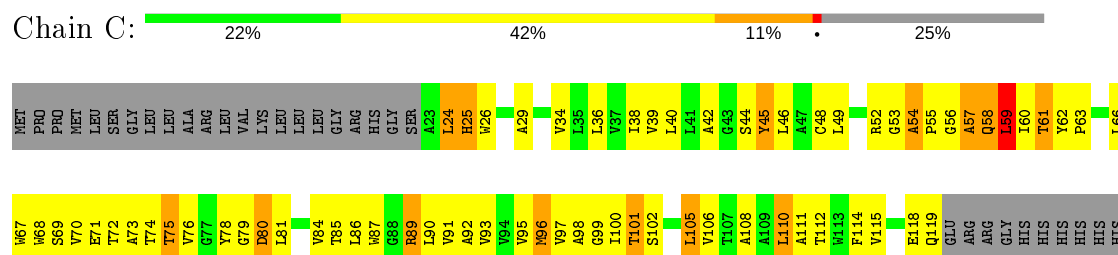
• Molecule 1: Voltage-gated potassium channel



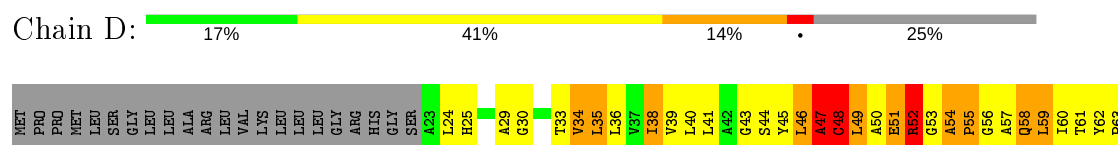
• Molecule 1: Voltage-gated potassium channel



• Molecule 1: Voltage-gated potassium channel



• Molecule 1: Voltage-gated potassium channel





4 Data and refinement statistics

Property	Value	Source
Space group	C 1 2 1	Depositor
Cell constants a, b, c, α , β , γ	130.97Å 76.63Å 112.97Å 90.00° 125.83° 90.00°	Depositor
Resolution (Å)	24.84 – 3.56 24.84 – 3.56	Depositor EDS
% Data completeness (in resolution range)	75.1 (24.84-3.56) 75.1 (24.84-3.56)	Depositor EDS
R_{merge}	0.09	Depositor
R_{sym}	(Not available)	Depositor
$\langle I/\sigma(I) \rangle$ ¹	3.51 (at 3.54Å)	Xtriage
Refinement program	REFMAC 5.5.0051	Depositor
R, R_{free}	0.271 , 0.302 0.289 , 0.313	Depositor DCC
R_{free} test set	409 reflections (4.92%)	wwPDB-VP
Wilson B-factor (Å ²)	114.9	Xtriage
Anisotropy	0.219	Xtriage
Bulk solvent k_{sol} (e/Å ³), B_{sol} (Å ²)	0.16 , 139.4	EDS
L-test for twinning ²	$\langle L \rangle = 0.39$, $\langle L^2 \rangle = 0.23$	Xtriage
Estimated twinning fraction	0.069 for h,-k,-h-l	Xtriage
F_o, F_c correlation	0.89	EDS
Total number of atoms	2832	wwPDB-VP
Average B, all atoms (Å ²)	116.0	wwPDB-VP

Xtriage's analysis on translational NCS is as follows: *The largest off-origin peak in the Patterson function is 5.85% of the height of the origin peak. No significant pseudotranslation is detected.*

¹Intensities estimated from amplitudes.

²Theoretical values of $\langle |L| \rangle$, $\langle L^2 \rangle$ for acentric reflections are 0.5, 0.333 respectively for untwinned datasets, and 0.375, 0.2 for perfectly twinned datasets.

5 Model quality

5.1 Standard geometry

Bond lengths and bond angles in the following residue types are not validated in this section: TBA, K, MTN

The Z score for a bond length (or angle) is the number of standard deviations the observed value is removed from the expected value. A bond length (or angle) with $|Z| > 5$ is considered an outlier worth inspection. RMSZ is the root-mean-square of all Z scores of the bond lengths (or angles).

Mol	Chain	Bond lengths		Bond angles	
		RMSZ	$\# Z > 5$	RMSZ	$\# Z > 5$
1	A	0.42	0/737	0.59	0/1019
1	B	0.54	1/679 (0.1%)	0.78	3/940 (0.3%)
1	C	0.38	0/730	0.53	0/1009
1	D	0.55	0/719	0.83	4/994 (0.4%)
All	All	0.48	1/2865 (0.0%)	0.69	7/3962 (0.2%)

Chiral center outliers are detected by calculating the chiral volume of a chiral center and verifying if the center is modelled as a planar moiety or with the opposite hand. A planarity outlier is detected by checking planarity of atoms in a peptide group, atoms in a mainchain group or atoms of a sidechain that are expected to be planar.

Mol	Chain	#Chirality outliers	#Planarity outliers
1	B	0	2
1	D	0	3
All	All	0	5

All (1) bond length outliers are listed below:

Mol	Chain	Res	Type	Atoms	Z	Observed(Å)	Ideal(Å)
1	B	81	LEU	CA-C	-6.74	1.35	1.52

All (7) bond angle outliers are listed below:

Mol	Chain	Res	Type	Atoms	Z	Observed(°)	Ideal(°)
1	B	48	CYS	O-C-N	-10.85	105.34	122.70
1	B	48	CYS	C-N-CA	8.11	141.97	121.70
1	D	48	CYS	O-C-N	-6.71	111.96	122.70
1	B	80	ASP	C-N-CA	-5.87	107.02	121.70
1	D	47	ALA	CA-C-N	-5.62	104.83	117.20
1	D	48	CYS	C-N-CA	5.10	134.44	121.70

Continued on next page...

Continued from previous page...

Mol	Chain	Res	Type	Atoms	Z	Observed(°)	Ideal(°)
1	D	52	ARG	CG-CD-NE	5.01	122.32	111.80

There are no chirality outliers.

All (5) planarity outliers are listed below:

Mol	Chain	Res	Type	Group
1	B	48	CYS	Mainchain
1	B	81	LEU	Mainchain
1	D	47	ALA	Mainchain,Peptide
1	D	48	CYS	Mainchain

5.2 Too-close contacts

In the following table, the Non-H and H(model) columns list the number of non-hydrogen atoms and hydrogen atoms in the chain respectively. The H(added) column lists the number of hydrogen atoms added and optimized by MolProbity. The Clashes column lists the number of clashes within the asymmetric unit, whereas Symm-Clashes lists symmetry related clashes.

Mol	Chain	Non-H	H(model)	H(added)	Clashes	Symm-Clashes
1	A	712	0	719	125	0
1	B	662	0	633	131	0
1	C	708	0	709	103	0
1	D	698	0	701	131	0
2	A	1	0	0	0	0
2	B	1	0	0	0	0
3	A	3	0	2	1	0
3	B	12	0	15	6	0
3	C	3	0	2	1	0
3	D	12	0	15	8	0
4	B	17	0	36	18	0
5	B	2	0	0	0	0
5	D	1	0	0	0	0
All	All	2832	0	2832	437	0

The all-atom clashscore is defined as the number of clashes found per 1000 atoms (including hydrogen atoms). The all-atom clashscore for this structure is 77.

All (437) close contacts within the same asymmetric unit are listed below, sorted by their clash magnitude.

Atom-1	Atom-2	Interatomic distance (Å)	Clash overlap (Å)
1:B:90[B]:LEU:CD1	1:B:91:VAL:N	1.81	1.41
1:B:67:TRP:CZ3	1:C:89:ARG:HB3	1.61	1.34
1:B:90[B]:LEU:HD13	1:B:91:VAL:N	1.01	1.33
1:A:58:GLN:HB3	1:A:81:LEU:CD2	1.66	1.25
3:B:248:MTN:H61	3:B:248:MTN:S1	1.79	1.22
1:C:68:TRP:HA	1:C:78[B]:TYR:OH	1.39	1.22
1:D:51:GLU:OE2	1:D:84:VAL:HG23	1.45	1.16
1:A:39:VAL:HG11	1:A:98:ALA:CB	1.74	1.16
1:B:51:GLU:CB	1:B:59:LEU:HD23	1.76	1.15
1:B:52:ARG:O	1:B:52:ARG:HG3	1.45	1.14
1:D:59:LEU:HD12	1:D:83:PRO:CA	1.77	1.13
1:B:51:GLU:HB3	1:B:59:LEU:HD23	1.12	1.11
1:A:39:VAL:HG11	1:A:98:ALA:HB2	1.24	1.10
1:D:59:LEU:HD11	1:D:83:PRO:CG	1.81	1.09
1:A:58:GLN:CB	1:A:81:LEU:HD21	1.81	1.08
1:A:112:THR:HG21	1:D:114:PHE:CB	1.82	1.08
1:A:112:THR:HG21	1:D:114:PHE:HB3	1.09	1.07
1:D:59:LEU:HD12	1:D:83:PRO:HA	1.11	1.07
1:C:70:VAL:HG11	1:D:93:VAL:HG13	1.36	1.07
1:C:93:VAL:HA	1:C:96:MET:SD	1.94	1.06
1:D:59:LEU:HD11	1:D:83:PRO:CD	1.85	1.06
1:D:52:ARG:O	1:D:52:ARG:HG3	1.43	1.06
1:A:93:VAL:HA	1:A:96:MET:SD	1.96	1.05
1:B:90[B]:LEU:HD13	1:B:91:VAL:CA	1.87	1.04
1:B:51:GLU:HB3	1:B:59:LEU:CD2	1.88	1.03
1:B:74:THR:O	1:B:75:THR:HG23	1.58	1.03
3:D:248:MTN:H61	3:D:248:MTN:S1	1.99	1.03
1:D:59:LEU:CD1	1:D:83:PRO:HG3	1.88	1.02
1:C:70:VAL:CG1	1:D:93:VAL:HG13	1.89	1.01
1:D:66:LEU:O	1:D:70:VAL:HG23	1.61	1.01
1:A:68:TRP:HA	1:A:78[B]:TYR:OH	1.61	1.01
1:D:51:GLU:OE1	1:D:59:LEU:HD12	1.59	1.01
1:B:62:TYR:CB	3:B:248:MTN:H62	1.91	1.00
1:D:35:LEU:O	1:D:38:ILE:HG23	1.61	1.00
1:D:59:LEU:HD11	1:D:83:PRO:HG3	1.43	0.99
1:D:58:GLN:HB3	1:D:81:LEU:HD22	1.41	0.99
1:D:85:THR:O	1:D:89:ARG:HG3	1.60	0.99
1:B:67:TRP:CE3	1:C:89:ARG:HB3	1.97	0.99
1:C:78[B]:TYR:HD2	1:C:79:GLY:H	1.09	0.99
1:D:78[B]:TYR:HD1	1:D:79:GLY:H	1.07	0.99
1:B:87:TRP:O	1:B:90[B]:LEU:HD12	1.63	0.98
1:C:97:VAL:HA	1:C:100:ILE:HD11	1.46	0.98

Continued on next page...

Continued from previous page...

Atom-1	Atom-2	Interatomic distance (Å)	Clash overlap (Å)
1:D:59:LEU:CD1	1:D:83:PRO:CG	2.42	0.98
1:D:59:LEU:CD1	1:D:83:PRO:CA	2.40	0.97
1:B:67:TRP:CZ3	1:C:89:ARG:CB	2.46	0.97
3:B:248:MTN:C6	3:B:248:MTN:S1	2.52	0.95
1:B:90[B]:LEU:CD1	1:B:91:VAL:H	1.64	0.95
1:B:97:VAL:HA	1:B:100:ILE:HD11	1.46	0.93
1:D:97:VAL:HA	1:D:100:ILE:HD11	1.50	0.92
1:A:70:VAL:CG1	1:B:93:VAL:CG1	2.49	0.91
1:B:74:THR:C	1:B:75:THR:HG23	1.91	0.89
1:A:75:THR:HG22	4:B:203:TBA:H143	1.53	0.88
1:B:54:ALA:HB1	1:B:55:PRO:HD2	1.51	0.88
1:C:67:TRP:CZ3	1:D:89:ARG:HB3	2.07	0.88
1:B:59:LEU:HD22	1:B:83:PRO:HB3	1.55	0.88
1:C:68:TRP:CA	1:C:78[B]:TYR:OH	2.23	0.87
1:B:90[B]:LEU:HD12	1:B:91:VAL:H	1.37	0.86
1:A:74:THR:O	1:A:75:THR:HG22	1.76	0.86
1:A:68:TRP:HE1	1:D:78[A]:TYR:HH	1.21	0.85
1:B:36:LEU:HD22	1:B:102:SER:OG	1.74	0.85
1:B:35:LEU:O	1:B:38:ILE:HG23	1.76	0.85
1:B:35:LEU:C	1:B:35:LEU:HD13	1.97	0.85
1:B:36:LEU:HD22	1:B:102:SER:CB	2.07	0.84
1:A:34:VAL:O	1:A:38:ILE:HD13	1.77	0.84
1:B:94:VAL:O	1:B:97:VAL:HG22	1.75	0.84
1:D:29:ALA:O	1:D:33:THR:HG23	1.78	0.84
1:A:58:GLN:HB3	1:A:81:LEU:HD21	0.86	0.83
1:C:40:LEU:HD22	1:C:69:SER:HB3	1.58	0.83
1:C:74:THR:O	1:C:75:THR:HG23	1.78	0.83
1:B:54:ALA:HB1	1:B:55:PRO:CD	2.09	0.82
1:D:54:ALA:HB1	1:D:55:PRO:HD2	1.59	0.82
1:A:103:PHE:CE1	1:B:100:ILE:HD13	2.14	0.82
1:D:51:GLU:OE1	1:D:59:LEU:CD1	2.27	0.82
1:A:25:HIS:HB2	1:D:114:PHE:CD2	2.14	0.82
1:D:52:ARG:O	1:D:52:ARG:CG	2.26	0.82
1:A:37:VAL:HG13	1:A:38:ILE:HD12	1.62	0.81
1:B:51:GLU:OE2	1:B:83:PRO:HA	1.78	0.81
1:D:51:GLU:OE1	1:D:83:PRO:HA	1.80	0.81
1:A:70:VAL:CG1	1:B:93:VAL:HG13	2.10	0.81
1:C:96:MET:O	1:C:100:ILE:HG12	1.81	0.81
1:B:29:ALA:O	1:B:33:THR:HG23	1.81	0.81
1:A:70:VAL:HG11	1:B:93:VAL:CG1	2.10	0.81
1:A:34:VAL:O	1:A:38:ILE:CD1	2.29	0.81

Continued on next page...

Continued from previous page...

Atom-1	Atom-2	Interatomic distance (Å)	Clash overlap (Å)
1:C:67:TRP:CZ3	1:D:89:ARG:CB	2.64	0.80
1:C:74:THR:O	1:C:75:THR:CG2	2.30	0.79
1:A:74:THR:O	1:A:75:THR:CG2	2.30	0.79
1:D:89:ARG:O	1:D:93:VAL:HG23	1.83	0.78
1:B:35:LEU:O	1:B:38:ILE:CG2	2.30	0.78
1:A:70:VAL:HG11	1:B:93:VAL:HG13	1.64	0.78
1:D:54:ALA:HB1	1:D:55:PRO:CD	2.14	0.78
1:B:74:THR:O	1:B:75:THR:CG2	2.30	0.78
1:B:35:LEU:O	1:B:39:VAL:HG23	1.84	0.78
1:A:93:VAL:O	1:A:97:VAL:HG12	1.84	0.77
1:D:78[B]:TYR:HD1	1:D:79:GLY:N	1.82	0.77
1:C:92:ALA:O	1:C:95:VAL:HG12	1.85	0.77
1:D:59:LEU:HD13	1:D:83:PRO:HG3	1.66	0.77
1:C:44:SER:HB3	1:C:66:LEU:HD23	1.66	0.76
1:B:66:LEU:O	1:B:70:VAL:HG23	1.85	0.76
1:B:62:TYR:CB	3:B:248:MTN:C6	2.64	0.76
3:D:248:MTN:S1	3:D:248:MTN:C6	2.74	0.75
1:A:103:PHE:CZ	1:B:100:ILE:HD13	2.20	0.75
1:B:103:PHE:CZ	1:C:100:ILE:HD12	2.21	0.75
1:C:53:GLY:O	1:C:54:ALA:CB	2.35	0.75
1:D:59:LEU:HD11	1:D:83:PRO:N	2.02	0.75
1:A:97:VAL:HA	1:A:100:ILE:HD11	1.68	0.75
1:A:93:VAL:CA	1:A:96:MET:SD	2.75	0.74
1:B:93:VAL:O	1:B:97:VAL:HG13	1.87	0.74
1:B:99:GLY:O	1:B:103:PHE:HD2	1.69	0.74
1:B:51:GLU:OE1	1:B:59:LEU:CB	2.37	0.73
1:C:53:GLY:O	1:C:54:ALA:HB2	1.89	0.73
1:B:93:VAL:HA	1:B:96:MET:SD	2.28	0.72
1:B:35:LEU:HD13	1:B:36:LEU:N	2.04	0.72
1:A:40:LEU:HD22	1:A:69:SER:HB2	1.70	0.71
1:B:51:GLU:CG	1:B:59:LEU:HD23	2.20	0.71
1:B:68:TRP:HB2	1:B:81:LEU:HD11	1.71	0.71
1:D:59:LEU:CD1	1:D:83:PRO:HA	1.99	0.71
1:B:43:GLY:O	1:B:47:ALA:N	2.24	0.71
1:C:92:ALA:O	1:C:96:MET:HG3	1.89	0.71
1:C:57:ALA:C	1:C:59:LEU:H	1.94	0.71
1:D:59:LEU:CD1	1:D:83:PRO:CB	2.69	0.71
1:C:68:TRP:NE1	1:C:72:THR:OG1	2.23	0.70
1:A:53:GLY:O	1:A:54:ALA:HB2	1.91	0.70
1:C:84:VAL:HA	1:C:89:ARG:CZ	2.22	0.70
1:C:25:HIS:ND1	1:C:112:THR:OG1	2.24	0.70

Continued on next page...

Continued from previous page...

Atom-1	Atom-2	Interatomic distance (Å)	Clash overlap (Å)
1:A:71:GLU:O	1:A:76:VAL:CG2	2.40	0.69
1:C:24:LEU:HD23	1:C:25:HIS:N	2.07	0.69
1:C:68:TRP:CD1	1:C:72:THR:OG1	2.45	0.69
1:B:51:GLU:OE2	1:B:83:PRO:CA	2.41	0.69
1:A:58:GLN:O	1:A:58:GLN:HG3	1.90	0.69
1:D:97:VAL:HA	1:D:100:ILE:CD1	2.22	0.69
1:A:58:GLN:CB	1:A:81:LEU:CD2	2.54	0.69
1:C:70:VAL:HG13	1:D:93:VAL:HG13	1.74	0.69
1:A:71:GLU:O	1:A:76:VAL:HG22	1.92	0.69
1:B:86:LEU:HB3	1:B:87:TRP:CE3	2.28	0.68
1:A:29:ALA:HA	1:A:105:LEU:HD23	1.75	0.68
1:D:52:ARG:NH1	3:D:248:MTN:H72	2.07	0.68
1:B:35:LEU:HD22	1:B:35:LEU:O	1.92	0.68
1:A:78[B]:TYR:HD2	1:A:79:GLY:H	1.42	0.68
1:A:115:VAL:HG23	1:B:112:THR:HG22	1.74	0.68
1:B:51:GLU:OE1	1:B:59:LEU:HB3	1.92	0.68
1:B:52:ARG:CG	1:B:52:ARG:O	2.30	0.68
1:D:59:LEU:CD1	1:D:83:PRO:N	2.57	0.68
1:A:96:MET:O	1:A:100:ILE:HG12	1.94	0.67
1:B:86:LEU:HB3	1:B:87:TRP:HE3	1.60	0.67
1:B:118:GLU:O	1:B:119:GLN:C	2.33	0.67
1:B:54:ALA:C	1:B:56:GLY:H	1.97	0.67
1:B:103:PHE:CE1	1:C:100:ILE:HD12	2.30	0.66
1:D:99:GLY:O	1:D:103:PHE:HD2	1.78	0.66
1:B:54:ALA:O	1:B:56:GLY:N	2.30	0.65
1:B:51:GLU:CD	1:B:59:LEU:HD23	2.16	0.65
1:C:67:TRP:HZ3	1:D:89:ARG:HB3	1.60	0.65
1:A:54:ALA:HB1	1:A:55:PRO:HD2	1.77	0.65
1:B:91:VAL:O	1:B:94:VAL:HB	1.96	0.65
1:D:94:VAL:O	1:D:97:VAL:HG22	1.97	0.65
1:B:51:GLU:OE1	1:B:59:LEU:CD2	2.45	0.65
1:C:44:SER:CB	1:C:66:LEU:HD23	2.26	0.64
1:A:39:VAL:CG1	1:A:98:ALA:CB	2.66	0.64
1:A:111:ALA:HA	1:B:108:ALA:HB1	1.80	0.64
1:A:59:LEU:O	1:A:61:THR:N	2.30	0.64
1:C:54:ALA:O	1:C:56:GLY:N	2.30	0.64
1:C:57:ALA:O	1:C:59:LEU:N	2.30	0.64
1:D:93:VAL:O	1:D:97:VAL:HG13	1.97	0.64
1:A:54:ALA:O	1:A:56:GLY:N	2.30	0.64
1:B:62:TYR:N	1:B:63:PRO:HD2	2.13	0.63
1:B:99:GLY:O	1:B:103:PHE:CD2	2.50	0.63

Continued on next page...

Continued from previous page...

Atom-1	Atom-2	Interatomic distance (Å)	Clash overlap (Å)
1:B:115:VAL:O	1:B:118:GLU:HG3	1.97	0.63
1:C:74:THR:C	1:C:75:THR:HG22	2.19	0.63
1:B:67:TRP:CZ3	1:C:89:ARG:CA	2.82	0.63
1:D:51:GLU:OE1	1:D:59:LEU:CB	2.47	0.63
1:C:97:VAL:HA	1:C:100:ILE:CD1	2.25	0.63
1:C:74:THR:C	1:C:75:THR:CG2	2.67	0.62
1:C:78[B]:TYR:HD2	1:C:79:GLY:N	1.89	0.62
1:B:74:THR:C	1:B:75:THR:CG2	2.64	0.62
1:A:77:GLY:HA3	1:D:76:VAL:HG12	1.80	0.62
1:A:97:VAL:HA	1:A:100:ILE:CD1	2.29	0.62
1:A:74:THR:C	1:A:75:THR:HG22	2.19	0.62
1:D:25:HIS:CD2	1:D:112:THR:OG1	2.53	0.62
1:D:47:ALA:O	1:D:50:ALA:HB3	2.00	0.61
1:A:29:ALA:HA	1:A:105:LEU:CD2	2.30	0.61
1:C:24:LEU:HD23	1:C:25:HIS:H	1.65	0.61
1:A:25:HIS:HA	1:D:114:PHE:CZ	2.36	0.61
1:A:58:GLN:CG	1:A:58:GLN:O	2.48	0.61
1:A:59:LEU:C	1:A:61:THR:H	2.02	0.61
1:B:92:ALA:O	1:B:95:VAL:N	2.34	0.61
1:A:100:ILE:HD12	1:D:103:PHE:CE1	2.35	0.61
1:B:68:TRP:CD1	1:B:81:LEU:HD11	2.36	0.61
1:C:62:TYR:N	1:C:63:PRO:HD2	2.16	0.61
1:C:34:VAL:O	1:C:38:ILE:HG12	2.00	0.60
1:D:92:ALA:O	1:D:95:VAL:N	2.34	0.60
1:A:75:THR:CG2	4:B:203:TBA:H143	2.27	0.60
1:D:45:TYR:O	1:D:49:LEU:HG	2.02	0.60
1:D:58:GLN:O	1:D:58:GLN:HG3	2.01	0.60
1:C:115:VAL:O	1:C:118:GLU:HG2	2.01	0.60
1:B:74:THR:O	1:B:75:THR:CB	2.49	0.60
1:A:112:THR:CG2	1:D:114:PHE:HB3	2.05	0.60
1:D:59:LEU:HD11	1:D:83:PRO:HD3	1.80	0.59
1:A:54:ALA:C	1:A:56:GLY:H	2.05	0.59
1:B:51:GLU:HG2	1:B:51:GLU:O	2.03	0.59
1:D:48:CYS:SG	3:D:248:MTN:H71	2.41	0.59
1:D:51:GLU:OE2	1:D:84:VAL:CG2	2.36	0.59
1:A:25:HIS:HD1	1:A:112:THR:HG1	1.48	0.59
1:C:118:GLU:OE1	1:C:118:GLU:HA	2.02	0.59
1:D:62:TYR:N	1:D:63:PRO:HD2	2.17	0.59
1:C:46:LEU:HD22	1:C:91:VAL:HG21	1.84	0.59
1:A:67:TRP:NE1	1:A:78[B]:TYR:HE1	2.00	0.58
1:C:106:VAL:O	1:C:110:LEU:HD22	2.02	0.58

Continued on next page...

Continued from previous page...

Atom-1	Atom-2	Interatomic distance (Å)	Clash overlap (Å)
1:C:24:LEU:O	1:C:26:TRP:N	2.36	0.58
1:B:75:THR:CG2	4:B:203:TBA:H232	2.32	0.58
1:C:73:ALA:O	1:C:99:GLY:HA3	2.03	0.58
1:D:56:GLY:HA2	1:D:84:VAL:HG21	1.84	0.58
1:A:77:GLY:CA	1:D:76:VAL:HG12	2.34	0.58
1:D:51:GLU:OE1	1:D:59:LEU:HB2	2.02	0.58
1:D:52:ARG:HH11	3:D:248:MTN:H72	1.66	0.58
1:A:24:LEU:O	1:A:26:TRP:N	2.36	0.57
1:B:73:ALA:O	1:B:99:GLY:HA3	2.05	0.57
1:B:67:TRP:CH2	1:C:89:ARG:HA	2.38	0.57
1:B:90[B]:LEU:CD1	1:B:91:VAL:CA	2.63	0.57
4:B:203:TBA:H231	1:C:100:ILE:CG2	2.35	0.57
1:A:67:TRP:HE1	1:A:78[B]:TYR:HE1	1.52	0.57
1:A:70:VAL:HG13	1:B:93:VAL:CG1	2.34	0.57
1:C:67:TRP:HZ3	1:D:89:ARG:CB	2.13	0.57
1:A:41:LEU:O	1:A:45:TYR:HD2	1.86	0.57
1:B:54:ALA:CB	1:B:55:PRO:CD	2.82	0.56
1:C:114:PHE:HB3	1:D:112:THR:HG21	1.88	0.56
4:B:203:TBA:H231	1:C:100:ILE:HG21	1.88	0.56
1:B:111:ALA:HA	1:C:108:ALA:HB1	1.86	0.56
1:B:68:TRP:CD1	1:B:81:LEU:CD1	2.88	0.56
1:C:67:TRP:CE3	1:D:89:ARG:HB3	2.40	0.56
1:A:59:LEU:C	1:A:61:THR:N	2.59	0.56
1:B:74:THR:O	4:B:203:TBA:H232	2.06	0.56
1:D:30:GLY:O	1:D:34:VAL:HG23	2.05	0.56
1:B:100:ILE:HG22	4:B:203:TBA:H121	1.88	0.56
1:B:51:GLU:OE2	1:B:84:VAL:N	2.39	0.56
1:C:29:ALA:HA	1:C:105:LEU:HD23	1.88	0.56
1:A:49:LEU:HB3	3:A:248:MTN:H41	1.86	0.55
1:A:58:GLN:H	1:A:81:LEU:CD2	2.19	0.55
1:A:39:VAL:O	1:A:95:VAL:HG23	2.07	0.55
1:A:70:VAL:HG11	1:B:93:VAL:HG11	1.88	0.55
1:A:53:GLY:O	1:A:54:ALA:CB	2.55	0.55
1:C:95:VAL:O	1:C:98:ALA:HB3	2.06	0.55
1:C:111:ALA:HA	1:D:108:ALA:HB1	1.89	0.55
1:A:57:ALA:C	1:A:59:LEU:H	2.10	0.54
1:A:70:VAL:CG1	1:B:93:VAL:HG11	2.36	0.54
1:B:90[B]:LEU:HD13	1:B:91:VAL:HA	1.86	0.54
1:C:86:LEU:O	1:C:90:LEU:HG	2.07	0.54
1:D:106:VAL:O	1:D:110:LEU:HD13	2.08	0.54
1:D:65:ALA:HA	1:D:68:TRP:HB3	1.88	0.54

Continued on next page...

Continued from previous page...

Atom-1	Atom-2	Interatomic distance (Å)	Clash overlap (Å)
1:A:98:ALA:O	1:A:101:THR:HG22	2.08	0.54
1:A:32:ALA:HA	1:A:35:LEU:HG	1.89	0.54
1:C:67:TRP:CZ3	1:D:89:ARG:CG	2.91	0.54
1:A:68:TRP:HA	1:A:78[B]:TYR:HH	1.70	0.54
1:C:101:THR:HG22	1:C:102:SER:N	2.23	0.54
1:C:97:VAL:O	1:C:101:THR:HB	2.07	0.53
1:D:58:GLN:HB3	1:D:81:LEU:CD2	2.26	0.53
1:C:68:TRP:HD1	1:C:78[B]:TYR:HH	1.54	0.53
1:A:51:GLU:CD	1:A:84:VAL:H	2.12	0.53
1:A:71:GLU:C	1:A:76:VAL:CG2	2.76	0.53
1:A:54:ALA:C	1:A:56:GLY:N	2.62	0.53
1:A:62:TYR:N	1:A:63:PRO:HD2	2.23	0.53
1:D:91:VAL:O	1:D:94:VAL:HB	2.09	0.53
1:D:74:THR:O	1:D:75:THR:OG1	2.16	0.53
1:C:46:LEU:HD22	1:C:91:VAL:CG2	2.38	0.53
1:A:74:THR:HG21	1:B:96:MET:HB2	1.91	0.53
1:B:97:VAL:HA	1:B:100:ILE:CD1	2.29	0.53
1:A:93:VAL:CG2	1:D:70:VAL:HG11	2.39	0.52
1:D:46:LEU:HA	1:D:49:LEU:HD11	1.92	0.52
1:B:54:ALA:C	1:B:56:GLY:N	2.62	0.52
1:C:24:LEU:C	1:C:26:TRP:N	2.63	0.52
1:A:58:GLN:N	1:A:81:LEU:CD2	2.73	0.52
1:A:89:ARG:O	1:A:92:ALA:HB3	2.10	0.51
1:C:44:SER:HB3	1:C:66:LEU:CD2	2.39	0.51
1:A:112:THR:CG2	1:D:114:PHE:CB	2.74	0.51
1:A:33:THR:O	1:A:36:LEU:HB3	2.10	0.51
1:A:40:LEU:CD2	1:A:69:SER:HB2	2.38	0.51
1:A:74:THR:HG21	1:B:96:MET:CB	2.41	0.51
1:B:100:ILE:HG21	4:B:203:TBA:H142	1.92	0.51
1:A:97:VAL:O	1:A:100:ILE:HG13	2.11	0.51
1:A:54:ALA:HB1	1:A:55:PRO:CD	2.41	0.51
1:B:90[B]:LEU:CD1	1:B:91:VAL:HG23	2.41	0.51
1:C:24:LEU:C	1:C:26:TRP:H	2.13	0.51
1:C:67:TRP:HZ3	1:D:89:ARG:CA	2.23	0.51
1:C:76:VAL:HG21	1:D:96:MET:CE	2.40	0.51
1:D:82:TYR:O	1:D:82:TYR:CD2	2.64	0.51
1:B:52:ARG:HA	1:B:60:ILE:HG22	1.93	0.50
1:D:57:ALA:C	1:D:59:LEU:H	2.14	0.50
1:B:35:LEU:O	1:B:38:ILE:HG22	2.10	0.50
1:B:58:GLN:CG	1:B:58:GLN:O	2.60	0.50
1:B:68:TRP:CG	1:B:81:LEU:HD11	2.46	0.50

Continued on next page...

Continued from previous page...

Atom-1	Atom-2	Interatomic distance (Å)	Clash overlap (Å)
1:A:24:LEU:C	1:A:26:TRP:N	2.65	0.50
1:D:84:VAL:O	1:D:89:ARG:HD2	2.12	0.50
1:D:78[B]:TYR:CD1	1:D:79:GLY:N	2.68	0.50
1:B:51:GLU:CD	1:B:83:PRO:HA	2.31	0.50
1:A:24:LEU:O	1:A:27:ARG:N	2.45	0.50
1:B:68:TRP:CB	1:B:81:LEU:HD11	2.39	0.50
1:C:56:GLY:O	1:C:57:ALA:O	2.30	0.50
1:A:96:MET:O	1:A:100:ILE:CG1	2.60	0.50
1:B:74:THR:O	1:B:75:THR:OG1	2.30	0.50
1:D:54:ALA:C	1:D:56:GLY:H	2.16	0.49
1:D:58:GLN:C	1:D:60:ILE:H	2.15	0.49
1:C:58:GLN:C	1:C:60:ILE:H	2.16	0.49
1:C:85:THR:O	1:C:89:ARG:HG3	2.12	0.49
1:A:44:SER:OG	1:A:66[A]:LEU:HD23	2.11	0.49
1:B:115:VAL:C	1:B:117:ARG:H	2.15	0.49
1:A:67:TRP:NE1	1:A:78[B]:TYR:CE1	2.79	0.49
1:D:68:TRP:HA	1:D:78[B]:TYR:OH	2.13	0.49
1:B:118:GLU:O	1:B:119:GLN:O	2.30	0.49
1:B:59:LEU:O	1:B:59:LEU:HG	2.12	0.49
1:D:43:GLY:O	1:D:47:ALA:N	2.35	0.48
1:A:98:ALA:O	1:A:102:SER:HB3	2.13	0.48
1:A:90:LEU:O	1:A:93:VAL:HB	2.12	0.48
1:D:62:TYR:CB	3:D:248:MTN:H62	2.43	0.48
1:A:103:PHE:CZ	1:B:100:ILE:CD1	2.95	0.48
1:D:118:GLU:O	1:D:119:GLN:O	2.32	0.48
1:D:36:LEU:O	1:D:39:VAL:HB	2.14	0.48
1:D:93:VAL:HA	1:D:96:MET:SD	2.53	0.48
1:A:100:ILE:HD12	1:D:103:PHE:CZ	2.48	0.48
1:A:74:THR:OG1	1:B:96:MET:CE	2.62	0.48
1:B:32:ALA:CB	1:B:105:LEU:HD22	2.44	0.48
1:C:61:THR:HG22	1:C:63:PRO:HD2	1.96	0.48
1:C:74:THR:O	1:C:75:THR:HG22	2.14	0.48
1:C:80:ASP:OD2	1:C:81:LEU:HG	2.14	0.48
1:C:49:LEU:HB3	3:C:248:MTN:H41	1.96	0.47
1:C:78[B]:TYR:CD2	1:C:79:GLY:N	2.74	0.47
1:B:98:ALA:O	1:B:102:SER:HB3	2.15	0.47
1:D:45:TYR:O	1:D:49:LEU:CG	2.62	0.47
1:A:99:GLY:HA2	1:A:102:SER:OG	2.14	0.47
1:A:61:THR:HB	1:A:64:ARG:CB	2.45	0.47
1:A:71:GLU:HA	1:B:96:MET:HE1	1.95	0.47
1:B:117:ARG:HD3	1:B:117:ARG:HA	1.47	0.47

Continued on next page...

Continued from previous page...

Atom-1	Atom-2	Interatomic distance (Å)	Clash overlap (Å)
1:D:53:GLY:O	1:D:54:ALA:HB2	2.14	0.47
1:B:92:ALA:O	1:B:95:VAL:HG12	2.15	0.47
1:C:25:HIS:CE1	1:C:112:THR:HG1	2.32	0.47
1:C:71:GLU:CB	1:C:78[B]:TYR:CE1	2.97	0.47
1:B:36:LEU:HD22	1:B:102:SER:HB2	1.95	0.47
1:B:75:THR:HG23	4:B:203:TBA:H232	1.96	0.47
1:A:39:VAL:HG12	1:A:95:VAL:HG23	1.96	0.46
1:A:37:VAL:CG1	1:A:38:ILE:HD12	2.40	0.46
1:A:91:VAL:O	1:A:94:VAL:HB	2.15	0.46
4:B:203:TBA:C32	4:B:203:TBA:C42	2.91	0.46
1:C:76:VAL:O	1:D:76:VAL:O	2.32	0.46
1:B:51:GLU:OE1	1:B:59:LEU:HB2	2.14	0.46
1:A:39:VAL:HG11	1:A:98:ALA:HB1	1.87	0.46
1:A:25:HIS:HB2	1:D:114:PHE:CE2	2.50	0.46
1:D:56:GLY:HA2	1:D:84:VAL:CG2	2.45	0.46
1:C:76:VAL:HG21	1:D:96:MET:HE3	1.98	0.46
1:D:92:ALA:O	1:D:95:VAL:HG12	2.15	0.46
1:A:75:THR:HG21	4:B:203:TBA:H411	1.98	0.45
1:C:29:ALA:HA	1:C:105:LEU:CD2	2.47	0.45
1:A:71:GLU:C	1:A:76:VAL:HG23	2.37	0.45
1:A:81:LEU:O	1:A:82:TYR:HB3	2.16	0.45
1:B:38:ILE:O	1:B:38:ILE:HG12	2.15	0.45
1:C:62:TYR:N	1:C:63:PRO:CD	2.80	0.45
1:D:30:GLY:O	1:D:34:VAL:CG2	2.64	0.45
1:A:58:GLN:CA	1:A:81:LEU:CD2	2.95	0.45
1:D:57:ALA:C	1:D:59:LEU:N	2.70	0.45
1:C:114:PHE:CD2	1:D:25:HIS:HB2	2.51	0.45
1:C:78[A]:TYR:HH	1:D:68:TRP:HE1	1.63	0.45
1:A:87:TRP:O	1:A:91:VAL:HG23	2.17	0.45
1:B:43:GLY:O	1:B:47:ALA:CB	2.65	0.45
1:D:100:ILE:H	1:D:100:ILE:HG13	1.63	0.45
1:C:67:TRP:CZ3	1:D:89:ARG:CA	3.00	0.45
1:D:68:TRP:CZ2	1:D:83:PRO:HG2	2.52	0.45
1:C:25:HIS:CG	1:C:112:THR:HG1	2.33	0.45
1:C:68:TRP:CB	1:C:78[B]:TYR:OH	2.65	0.45
1:D:62:TYR:H	3:D:248:MTN:H73	1.82	0.45
1:A:93:VAL:HG22	1:D:70:VAL:HG11	1.98	0.45
1:B:51:GLU:CD	1:B:59:LEU:CD2	2.83	0.45
1:B:85:THR:O	1:B:86:LEU:C	2.55	0.45
1:D:117:ARG:HD3	1:D:117:ARG:HA	1.84	0.45
1:D:51:GLU:CD	1:D:84:VAL:H	2.19	0.45

Continued on next page...

Continued from previous page...

Atom-1	Atom-2	Interatomic distance (Å)	Clash overlap (Å)
1:D:99:GLY:O	1:D:103:PHE:CD2	2.66	0.45
1:A:38:ILE:HD12	1:A:38:ILE:N	2.33	0.44
1:D:36:LEU:CD1	1:D:98:ALA:HB1	2.48	0.44
1:D:62:TYR:N	1:D:63:PRO:CD	2.80	0.44
1:D:54:ALA:CB	1:D:55:PRO:CD	2.85	0.44
1:C:45:TYR:CD1	1:C:45:TYR:N	2.86	0.44
4:B:203:TBA:H322	4:B:203:TBA:H412	1.78	0.44
1:C:67:TRP:CE3	1:D:89:ARG:HD3	2.53	0.44
1:A:35:LEU:O	1:A:38:ILE:HB	2.18	0.43
1:D:115:VAL:C	1:D:117:ARG:H	2.21	0.43
1:D:33:THR:OG1	1:D:34:VAL:N	2.51	0.43
1:B:75:THR:HG21	4:B:203:TBA:H212	2.01	0.43
1:D:73:ALA:O	1:D:75:THR:HG23	2.19	0.43
1:B:100:ILE:CG2	4:B:203:TBA:H121	2.48	0.43
1:B:32:ALA:HB3	1:B:105:LEU:HD22	2.00	0.43
1:C:36:LEU:HD22	1:C:102:SER:HB3	2.01	0.43
1:C:68:TRP:O	1:C:72:THR:N	2.49	0.43
1:C:96:MET:H	1:C:96:MET:HG3	1.51	0.43
1:A:58:GLN:CA	1:A:81:LEU:HD22	2.49	0.43
1:B:75:THR:HG21	4:B:203:TBA:H232	2.00	0.43
1:A:24:LEU:C	1:A:26:TRP:H	2.21	0.43
1:A:74:THR:OG1	1:B:96:MET:HE2	2.19	0.43
1:C:80:ASP:CG	1:C:81:LEU:HG	2.39	0.43
1:A:92:ALA:O	1:A:95:VAL:N	2.52	0.43
1:B:62:TYR:H	3:B:248:MTN:H73	1.84	0.43
1:C:63:PRO:HA	1:C:66:LEU:HD12	2.00	0.42
1:A:29:ALA:O	1:A:33:THR:HG23	2.19	0.42
1:B:51:GLU:OE1	1:B:59:LEU:HD22	2.17	0.42
1:D:36:LEU:HG	1:D:40:LEU:HD13	2.01	0.42
1:C:115:VAL:HG23	1:D:112:THR:HG22	2.00	0.42
1:C:68:TRP:O	1:C:72:THR:OG1	2.34	0.42
1:B:41:LEU:O	1:B:44:SER:HB2	2.19	0.42
1:D:41:LEU:O	1:D:44:SER:HB2	2.20	0.42
1:D:36:LEU:HD12	1:D:98:ALA:HB1	2.02	0.42
1:A:101:THR:CG2	1:A:102:SER:N	2.83	0.42
1:A:55:PRO:O	1:A:56:GLY:C	2.57	0.42
1:A:64:ARG:O	1:A:67:TRP:HB3	2.20	0.42
1:D:80:ASP:CG	1:D:81:LEU:HG	2.40	0.42
1:B:51:GLU:OE1	1:B:59:LEU:HD23	2.15	0.42
1:D:62:TYR:N	3:D:248:MTN:H73	2.34	0.42
1:A:51:GLU:O	1:A:60:ILE:HG22	2.20	0.41

Continued on next page...

Continued from previous page...

Atom-1	Atom-2	Interatomic distance (Å)	Clash overlap (Å)
4:B:203:TBA:H422	4:B:203:TBA:H312	1.74	0.41
1:B:35:LEU:C	1:B:35:LEU:CD1	2.71	0.41
1:C:39:VAL:O	1:C:42:ALA:HB3	2.19	0.41
4:B:203:TBA:H122	4:B:203:TBA:H212	1.46	0.41
1:D:44:SER:O	1:D:48:CYS:HB3	2.19	0.41
1:C:76:VAL:HG12	1:D:77:GLY:HA3	2.01	0.41
4:B:203:TBA:H311	4:B:203:TBA:H222	1.62	0.41
1:B:62:TYR:H	3:B:248:MTN:C7	2.33	0.41
1:A:38:ILE:O	1:A:42:ALA:CB	2.68	0.41
1:B:62:TYR:N	1:B:63:PRO:CD	2.81	0.41
1:D:71:GLU:CB	1:D:78[B]:TYR:CE2	3.03	0.41
1:A:112:THR:HG21	1:D:114:PHE:HB2	1.87	0.41
1:A:61:THR:HG22	1:A:63:PRO:HD2	2.02	0.41
1:D:57:ALA:O	1:D:59:LEU:N	2.53	0.41
1:B:96:MET:H	1:B:96:MET:HG3	1.63	0.41
1:C:70:VAL:O	1:C:74:THR:OG1	2.35	0.41
1:D:85:THR:O	1:D:89:ARG:CG	2.50	0.41
1:A:40:LEU:O	1:A:44:SER:OG	2.24	0.41
1:C:84:VAL:HA	1:C:89:ARG:NH2	2.36	0.40
1:C:39:VAL:HG12	1:C:95:VAL:HG23	2.03	0.40
1:C:114:PHE:CB	1:D:112:THR:HG21	2.52	0.40

There are no symmetry-related clashes.

5.3 Torsion angles [i](#)

5.3.1 Protein backbone [i](#)

In the following table, the Percentiles column shows the percent Ramachandran outliers of the chain as a percentile score with respect to all X-ray entries followed by that with respect to entries of similar resolution.

The Analysed column shows the number of residues for which the backbone conformation was analysed, and the total number of residues.

Mol	Chain	Analysed	Favoured	Allowed	Outliers	Percentiles	
1	A	97/129 (75%)	77 (79%)	12 (12%)	8 (8%)	1	10
1	B	96/129 (74%)	76 (79%)	16 (17%)	4 (4%)	3	25
1	C	96/129 (74%)	72 (75%)	17 (18%)	7 (7%)	1	13
1	D	96/129 (74%)	74 (77%)	16 (17%)	6 (6%)	1	17

Continued on next page...

Continued from previous page...

Mol	Chain	Analysed	Favoured	Allowed	Outliers	Percentiles	
All	All	385/516 (75%)	299 (78%)	61 (16%)	25 (6%)	1	16

All (25) Ramachandran outliers are listed below:

Mol	Chain	Res	Type
1	A	57	ALA
1	B	57	ALA
1	C	54	ALA
1	C	57	ALA
1	C	58	GLN
1	A	25	HIS
1	A	60	ILE
1	C	25	HIS
1	C	52	ARG
1	A	54	ALA
1	A	55	PRO
1	A	58	GLN
1	B	55	PRO
1	B	75	THR
1	C	55	PRO
1	B	53	GLY
1	C	59	LEU
1	D	59	LEU
1	D	54	ALA
1	D	58	GLN
1	A	76	VAL
1	A	93	VAL
1	D	93	VAL
1	D	55	PRO
1	D	83	PRO

5.3.2 Protein sidechains ⓘ

In the following table, the Percentiles column shows the percent sidechain outliers of the chain as a percentile score with respect to all X-ray entries followed by that with respect to entries of similar resolution.

The Analysed column shows the number of residues for which the sidechain conformation was analysed, and the total number of residues.

Mol	Chain	Analysed	Rotameric	Outliers	Percentiles	
1	A	66/97 (68%)	49 (74%)	17 (26%)	0	4

Continued on next page...

Continued from previous page...

Mol	Chain	Analysed	Rotameric	Outliers	Percentiles	
1	B	55/97 (57%)	36 (66%)	19 (34%)	0	2
1	C	65/97 (67%)	51 (78%)	14 (22%)	1	6
1	D	63/97 (65%)	42 (67%)	21 (33%)	0	2
All	All	249/388 (64%)	178 (72%)	71 (28%)	0	3

All (71) residues with a non-rotameric sidechain are listed below:

Mol	Chain	Res	Type
1	A	40	LEU
1	A	48	CYS
1	A	49	LEU
1	A	61	THR
1	A	69	SER
1	A	74	THR
1	A	76	VAL
1	A	87	TRP
1	A	89	ARG
1	A	96	MET
1	A	97	VAL
1	A	100	ILE
1	A	101	THR
1	A	103	PHE
1	A	105	LEU
1	A	110	LEU
1	A	114	PHE
1	B	24	LEU
1	B	33	THR
1	B	34	VAL
1	B	35	LEU
1	B	37	VAL
1	B	38	ILE
1	B	46	LEU
1	B	48	CYS
1	B	52	ARG
1	B	61	THR
1	B	80	ASP
1	B	84	VAL
1	B	87	TRP
1	B	93	VAL
1	B	95	VAL
1	B	96	MET

Continued on next page...

Continued from previous page...

Mol	Chain	Res	Type
1	B	100	ILE
1	B	102	SER
1	B	119	GLN
1	C	24	LEU
1	C	45	TYR
1	C	48	CYS
1	C	59	LEU
1	C	61	THR
1	C	75	THR
1	C	80	ASP
1	C	87	TRP
1	C	89	ARG
1	C	96	MET
1	C	101	THR
1	C	105	LEU
1	C	110	LEU
1	C	119	GLN
1	D	24	LEU
1	D	34	VAL
1	D	35	LEU
1	D	38	ILE
1	D	46	LEU
1	D	48	CYS
1	D	49	LEU
1	D	51	GLU
1	D	52	ARG
1	D	61	THR
1	D	69	SER
1	D	74	THR
1	D	80	ASP
1	D	84	VAL
1	D	85	THR
1	D	87	TRP
1	D	93	VAL
1	D	95	VAL
1	D	96	MET
1	D	100	ILE
1	D	102	SER

Some sidechains can be flipped to improve hydrogen bonding and reduce clashes. All (4) such sidechains are listed below:

Mol	Chain	Res	Type
1	A	119	GLN
1	B	119	GLN
1	C	119	GLN
1	D	25	HIS

5.3.3 RNA ⓘ

There are no RNA molecules in this entry.

5.4 Non-standard residues in protein, DNA, RNA chains ⓘ

There are no non-standard protein/DNA/RNA residues in this entry.

5.5 Carbohydrates ⓘ

There are no carbohydrates in this entry.

5.6 Ligand geometry ⓘ

Of 7 ligands modelled in this entry, 2 are monoatomic - leaving 5 for Mogul analysis.

In the following table, the Counts columns list the number of bonds (or angles) for which Mogul statistics could be retrieved, the number of bonds (or angles) that are observed in the model and the number of bonds (or angles) that are defined in the Chemical Component Dictionary. The Link column lists molecule types, if any, to which the group is linked. The Z score for a bond length (or angle) is the number of standard deviations the observed value is removed from the expected value. A bond length (or angle) with $|Z| > 2$ is considered an outlier worth inspection. RMSZ is the root-mean-square of all Z scores of the bond lengths (or angles).

Mol	Type	Chain	Res	Link	Bond lengths			Bond angles		
					Counts	RMSZ	# Z > 2	Counts	RMSZ	# Z > 2
3	MTN	D	248	1	9,12,16	1.71	2 (22%)	9,20,27	3.68	7 (77%)
3	MTN	C	248	1	2,2,16	1.73	1 (50%)	0,1,27	0.00	-
3	MTN	B	248	1	9,12,16	2.13	2 (22%)	9,20,27	2.76	4 (44%)
4	TBA	B	203	-	16,16,16	0.87	0	18,18,18	0.84	1 (5%)
3	MTN	A	248	1	2,2,16	1.68	1 (50%)	0,1,27	0.00	-

In the following table, the Chirals column lists the number of chiral outliers, the number of chiral centers analysed, the number of these observed in the model and the number defined in the Chemical Component Dictionary. Similar counts are reported in the Torsion and Rings columns. '-' means no outliers of that kind were identified.

Mol	Type	Chain	Res	Link	Chirals	Torsions	Rings
3	MTN	D	248	1	-	0/0/25/29	0/1/1/1
3	MTN	B	248	1	-	0/0/25/29	0/1/1/1
4	TBA	B	203	-	-	9/20/20/20	-

All (6) bond length outliers are listed below:

Mol	Chain	Res	Type	Atoms	Z	Observed(Å)	Ideal(Å)
3	B	248	MTN	C5-N1	-4.66	1.44	1.50
3	D	248	MTN	O1-N1	-3.92	1.22	1.43
3	B	248	MTN	O1-N1	-3.92	1.22	1.43
3	D	248	MTN	C5-N1	-2.92	1.46	1.50
3	C	248	MTN	C4-S1	-2.41	1.76	1.81
3	A	248	MTN	C4-S1	-2.35	1.76	1.81

All (12) bond angle outliers are listed below:

Mol	Chain	Res	Type	Atoms	Z	Observed(°)	Ideal(°)
3	D	248	MTN	C9-C1-C2	-5.68	107.00	112.79
3	B	248	MTN	C1-C2-C3	-5.61	109.25	113.64
3	D	248	MTN	C1-C2-C3	-4.87	109.83	113.64
3	D	248	MTN	C2-C1-N1	4.85	103.10	99.37
3	B	248	MTN	C2-C1-N1	4.60	102.91	99.37
3	D	248	MTN	C8-C1-N1	4.19	115.35	110.00
3	D	248	MTN	C3-C5-N1	2.86	101.56	99.27
3	B	248	MTN	C3-C5-N1	2.68	101.42	99.27
3	D	248	MTN	C7-C5-C6	2.65	116.90	111.37
3	D	248	MTN	C8-C1-C2	-2.49	110.25	112.79
3	B	248	MTN	C8-C1-C2	-2.09	110.67	112.79
4	B	203	TBA	C12-C11-N1	-2.02	107.90	115.93

There are no chirality outliers.

All (9) torsion outliers are listed below:

Mol	Chain	Res	Type	Atoms
4	B	203	TBA	N1-C41-C42-C43
4	B	203	TBA	N1-C31-C32-C33
4	B	203	TBA	N1-C11-C12-C13
4	B	203	TBA	C21-C22-C23-C24
4	B	203	TBA	C31-C32-C33-C34
4	B	203	TBA	C22-C21-N1-C11
4	B	203	TBA	C22-C21-N1-C41
4	B	203	TBA	C22-C21-N1-C31

Continued on next page...

Continued from previous page...

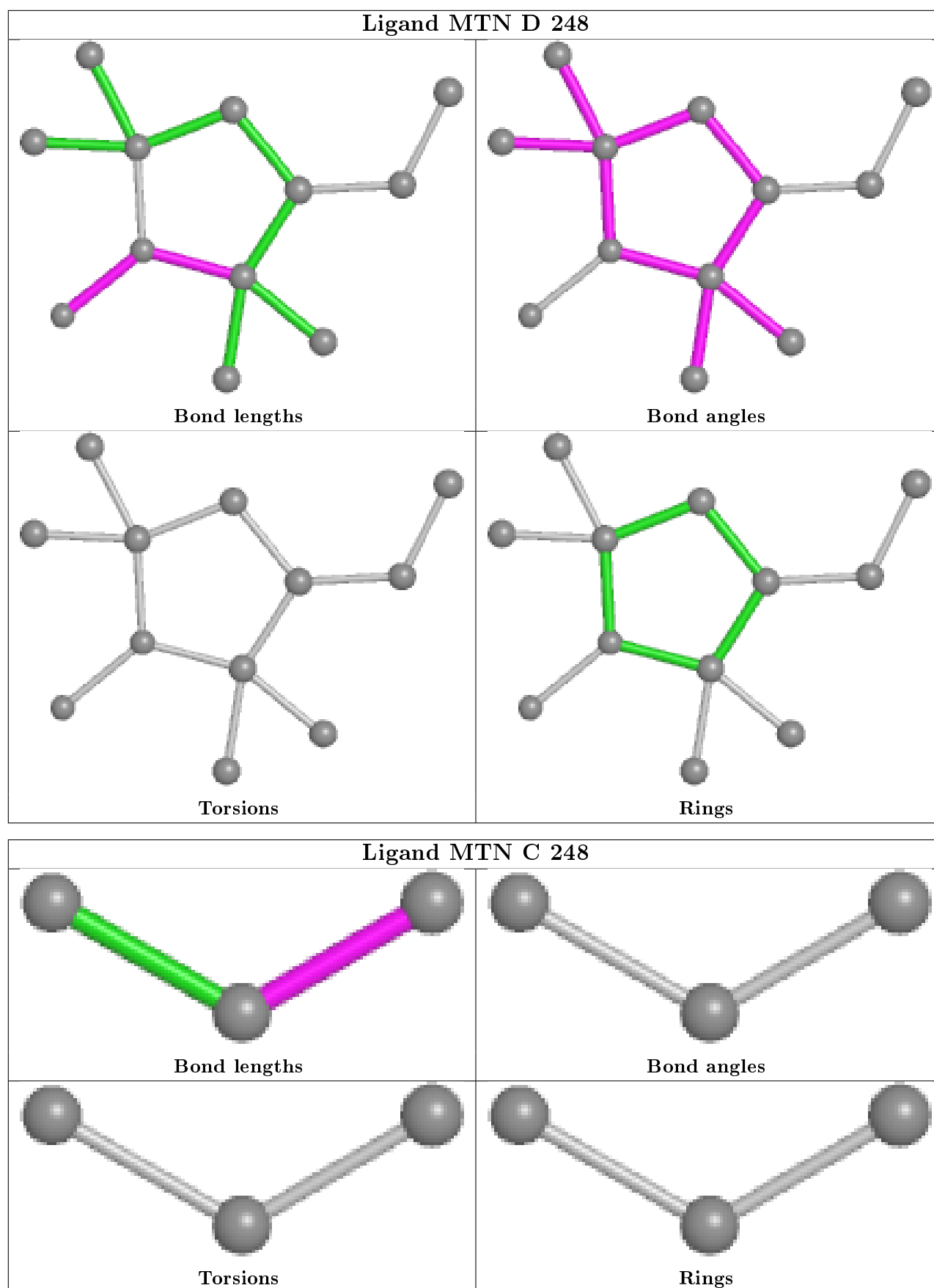
Mol	Chain	Res	Type	Atoms
4	B	203	TBA	C12-C11-N1-C41

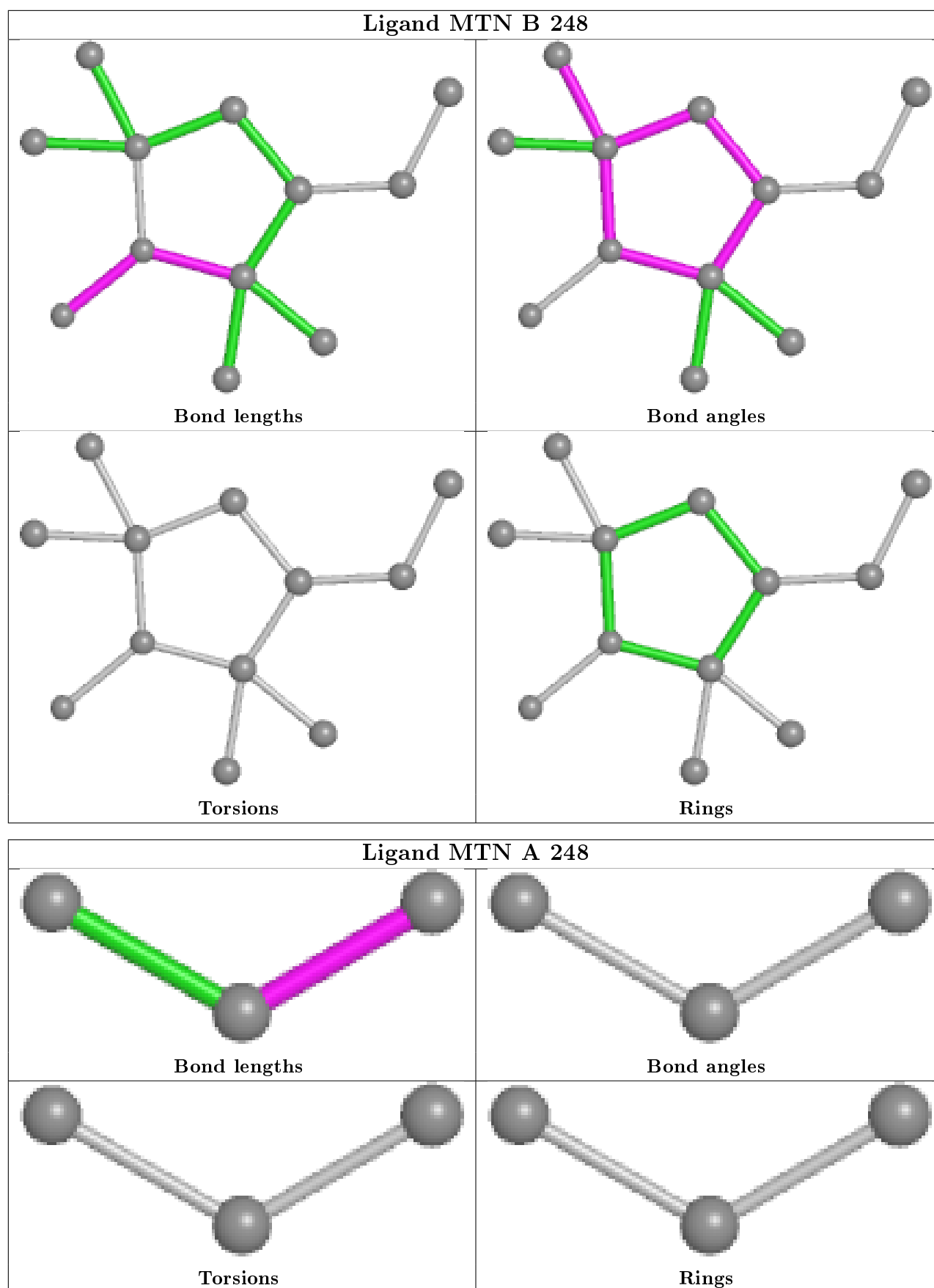
There are no ring outliers.

5 monomers are involved in 34 short contacts:

Mol	Chain	Res	Type	Clashes	Symm-Clashes
3	D	248	MTN	8	0
3	C	248	MTN	1	0
3	B	248	MTN	6	0
4	B	203	TBA	18	0
3	A	248	MTN	1	0

The following is a two-dimensional graphical depiction of Mogul quality analysis of bond lengths, bond angles, torsion angles, and ring geometry for all instances of the Ligand of Interest. In addition, ligands with molecular weight > 250 and outliers as shown on the validation Tables will also be included. For torsion angles, if less than 5% of the Mogul distribution of torsion angles is within 10 degrees of the torsion angle in question, then that torsion angle is considered an outlier. Any bond that is central to one or more torsion angles identified as an outlier by Mogul will be highlighted in the graph. For rings, the root-mean-square deviation (RMSD) between the ring in question and similar rings identified by Mogul is calculated over all ring torsion angles. If the average RMSD is greater than 60 degrees and the minimal RMSD between the ring in question and any Mogul-identified rings is also greater than 60 degrees, then that ring is considered an outlier. The outliers are highlighted in purple. The color gray indicates Mogul did not find sufficient equivalents in the CSD to analyse the geometry.





5.7 Other polymers

There are no such residues in this entry.

5.8 Polymer linkage issues

There are no chain breaks in this entry.

6 Fit of model and data [i](#)

6.1 Protein, DNA and RNA chains [i](#)

In the following table, the column labelled ‘#RSRZ> 2’ contains the number (and percentage) of RSRZ outliers, followed by percent RSRZ outliers for the chain as percentile scores relative to all X-ray entries and entries of similar resolution. The OWAB column contains the minimum, median, 95th percentile and maximum values of the occupancy-weighted average B-factor per residue. The column labelled ‘Q< 0.9’ lists the number of (and percentage) of residues with an average occupancy less than 0.9.

Mol	Chain	Analysed	<RSRZ>	#RSRZ>2	OWAB(Å ²)	Q<0.9
1	A	97/129 (75%)	-0.95	0 100 100	43, 129, 278, 354	0
1	B	97/129 (75%)	-0.73	0 100 100	48, 86, 139, 186	0
1	C	97/129 (75%)	-0.99	0 100 100	25, 120, 244, 344	0
1	D	97/129 (75%)	-0.69	0 100 100	48, 88, 142, 229	0
All	All	388/516 (75%)	-0.84	0 100 100	25, 97, 229, 354	0

There are no RSRZ outliers to report.

6.2 Non-standard residues in protein, DNA, RNA chains [i](#)

There are no non-standard protein/DNA/RNA residues in this entry.

6.3 Carbohydrates [i](#)

There are no carbohydrates in this entry.

6.4 Ligands [i](#)

In the following table, the Atoms column lists the number of modelled atoms in the group and the number defined in the chemical component dictionary. The B-factors column lists the minimum, median, 95th percentile and maximum values of B factors of atoms in the group. The column labelled ‘Q< 0.9’ lists the number of atoms with occupancy less than 0.9.

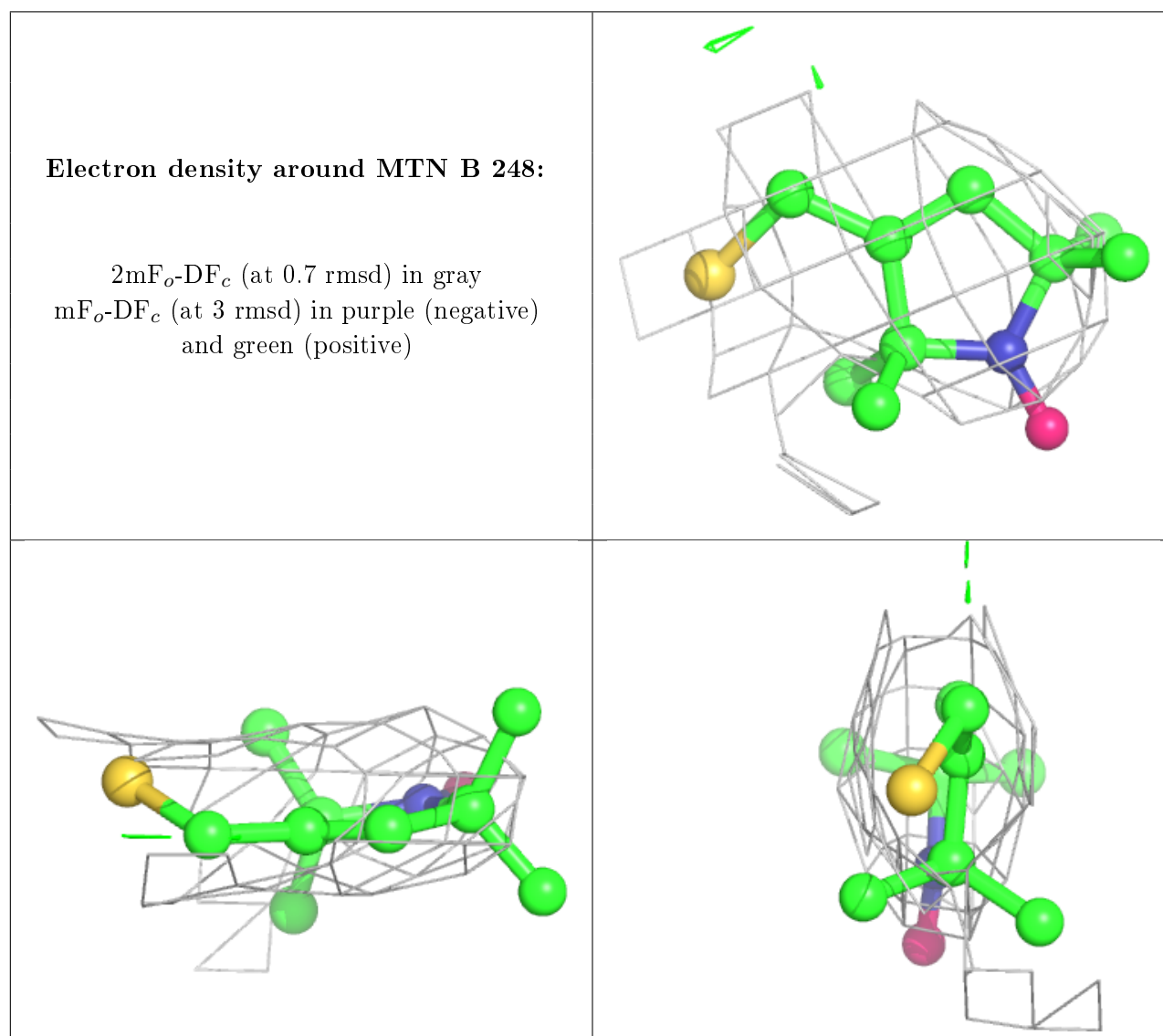
Mol	Type	Chain	Res	Atoms	RSCC	RSR	B-factors(Å ²)	Q<0.9
3	MTN	B	248	12/16	0.85	0.40	57,94,126,127	12
4	TBA	B	203	17/17	0.88	0.31	2,13,114,201	17
3	MTN	D	248	12/16	0.91	0.27	57,94,126,127	12
3	MTN	C	248	3/16	0.92	0.17	11,11,47,104	3

Continued on next page...

Continued from previous page...

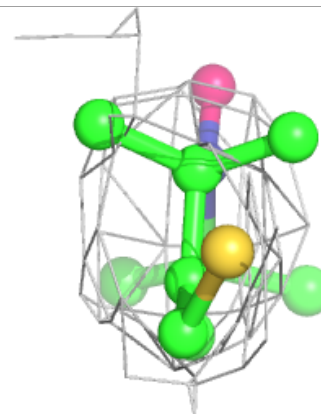
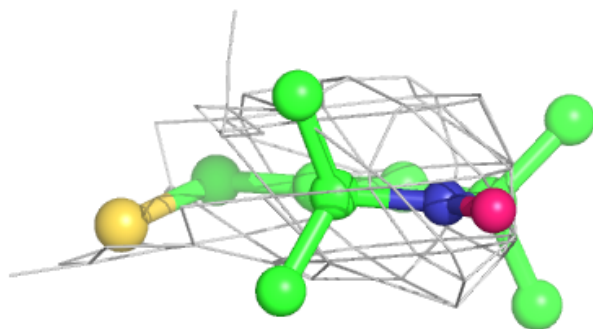
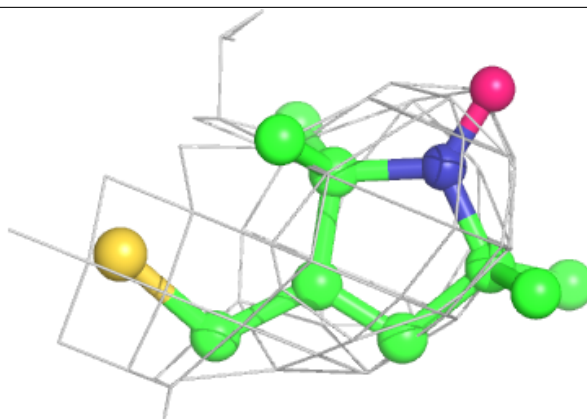
Mol	Type	Chain	Res	Atoms	RSCC	RSR	B-factors(\AA^2)	Q<0.9
3	MTN	A	248	3/16	0.95	0.13	2,2,15,327	3
2	K	B	201	1/1	0.96	0.06	29,29,29,29	0
2	K	A	202	1/1	0.98	0.08	2,2,2,2	0

The following is a graphical depiction of the model fit to experimental electron density of all instances of the Ligand of Interest. In addition, ligands with molecular weight > 250 and outliers as shown on the geometry validation Tables will also be included. Each fit is shown from different orientation to approximate a three-dimensional view.



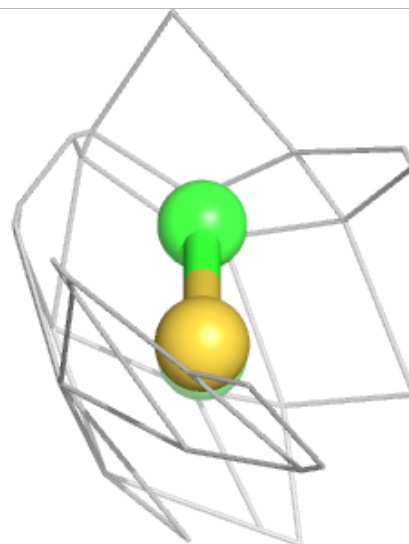
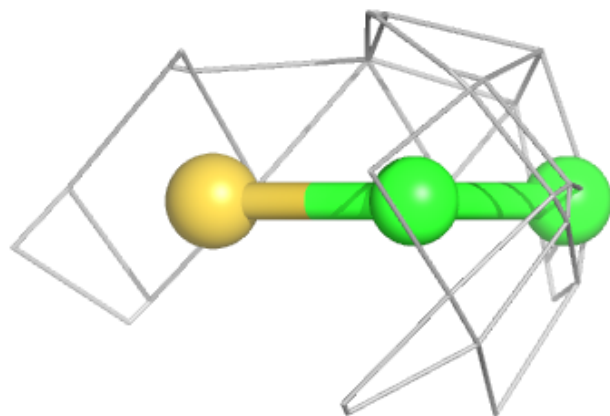
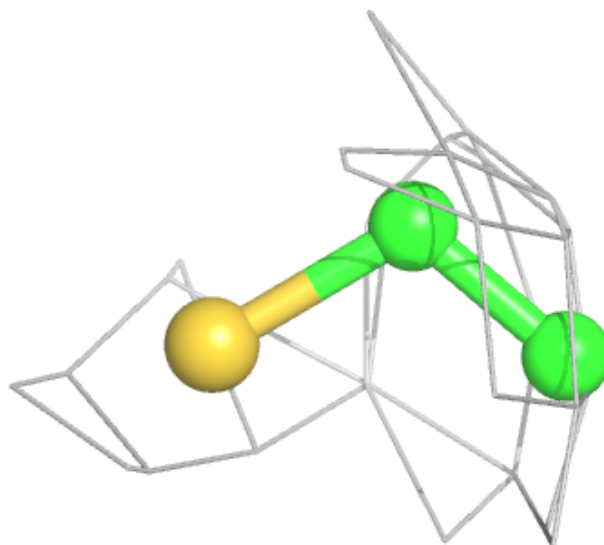
Electron density around MTN D 248:

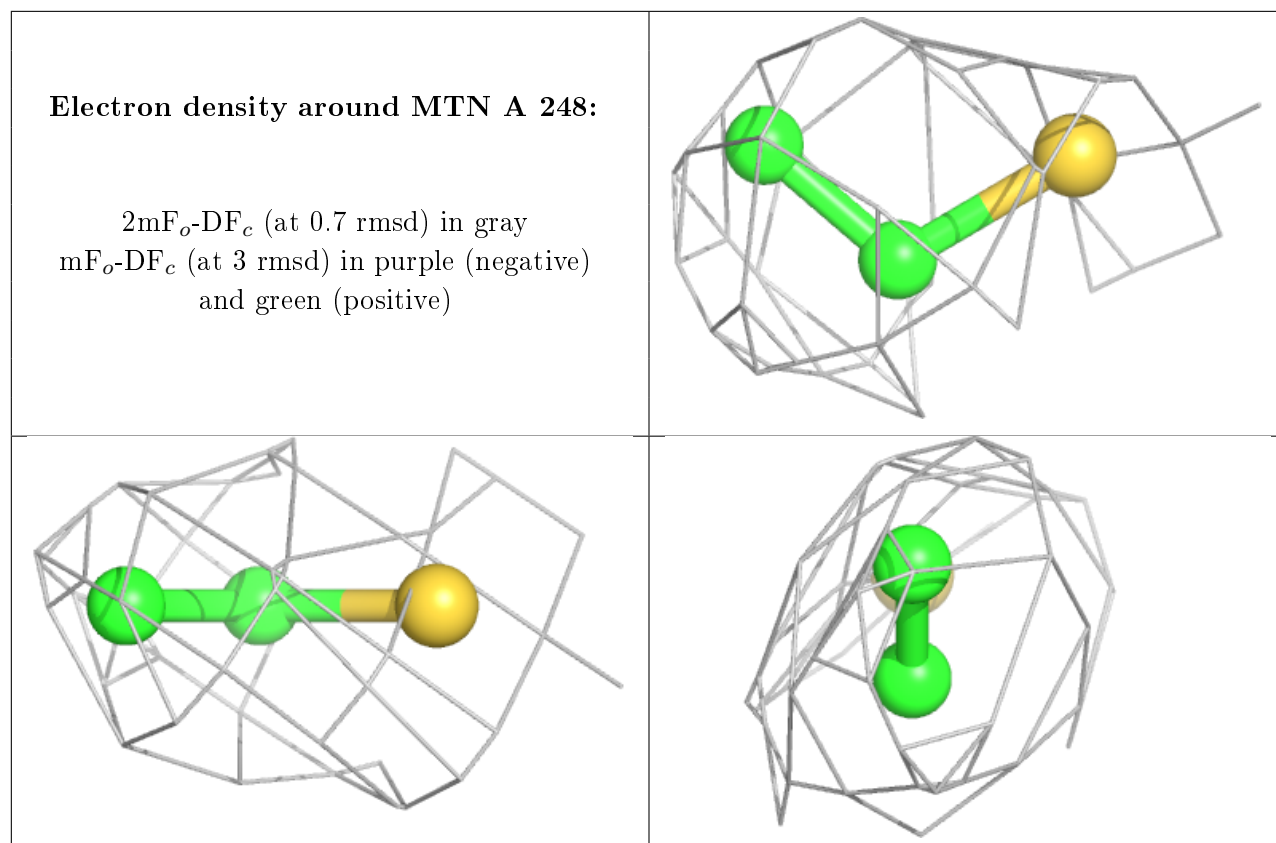
$2mF_o - DF_c$ (at 0.7 rmsd) in gray
 $mF_o - DF_c$ (at 3 rmsd) in purple (negative)
and green (positive)



Electron density around MTN C 248:

$2mF_o-DF_c$ (at 0.7 rmsd) in gray
 mF_o-DF_c (at 3 rmsd) in purple (negative)
and green (positive)





6.5 Other polymers [i](#)

There are no such residues in this entry.