



# Full wwPDB X-ray Structure Validation Report ⓘ

Jun 14, 2020 – 11:06 am BST

PDB ID : 2IHV  
Title : Carboxyethylarginine synthase from *Streptomyces clavuligerus*: 5-guanidinovaleric acid complex  
Authors : Caines, M.E.; Schofield, C.J.  
Deposited on : 2006-09-27  
Resolution : 2.30 Å(reported)

This is a Full wwPDB X-ray Structure Validation Report for a publicly released PDB entry.

We welcome your comments at [validation@mail.wwpdb.org](mailto:validation@mail.wwpdb.org)

A user guide is available at

<https://www.wwpdb.org/validation/2017/XrayValidationReportHelp>

with specific help available everywhere you see the ⓘ symbol.

---

The following versions of software and data (see [references ⓘ](#)) were used in the production of this report:

MolProbity : 4.02b-467  
Mogul : 1.8.5 (274361), CSD as541be (2020)  
Xtriage (Phenix) : 1.13  
EDS : 2.11  
buster-report : 1.1.7 (2018)  
Percentile statistics : 20191225.v01 (using entries in the PDB archive December 25th 2019)  
Refmac : 5.8.0158  
CCP4 : 7.0.044 (Gargrove)  
Ideal geometry (proteins) : Engh & Huber (2001)  
Ideal geometry (DNA, RNA) : Parkinson et al. (1996)  
Validation Pipeline (wwPDB-VP) : 2.11

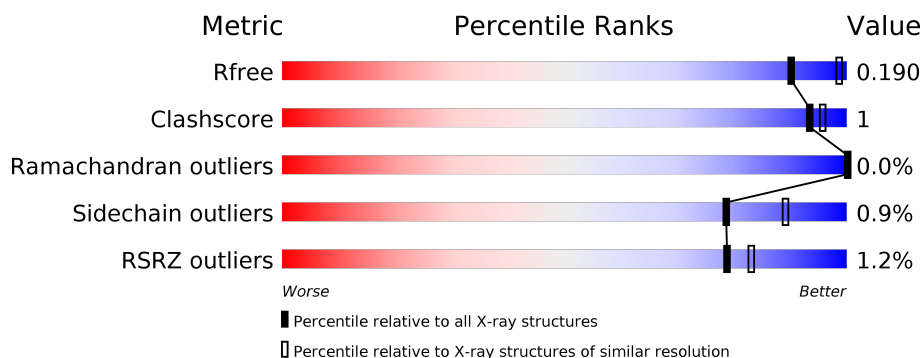
# 1 Overall quality at a glance ⓘ

The following experimental techniques were used to determine the structure:

## *X-RAY DIFFRACTION*

The reported resolution of this entry is 2.30 Å.

Percentile scores (ranging between 0-100) for global validation metrics of the entry are shown in the following graphic. The table shows the number of entries on which the scores are based.



Metric	Whole archive (#Entries)	Similar resolution (#Entries, resolution range(Å))
$R_{free}$	130704	5042 (2.30-2.30)
Clashscore	141614	5643 (2.30-2.30)
Ramachandran outliers	138981	5575 (2.30-2.30)
Sidechain outliers	138945	5575 (2.30-2.30)
RSRZ outliers	127900	4938 (2.30-2.30)

The table below summarises the geometric issues observed across the polymeric chains and their fit to the electron density. The red, orange, yellow and green segments on the lower bar indicate the fraction of residues that contain outliers for  $\geq 3$ , 2, 1 and 0 types of geometric quality criteria respectively. A grey segment represents the fraction of residues that are not modelled. The numeric value for each fraction is indicated below the corresponding segment, with a dot representing fractions  $\leq 5\%$ . The upper red bar (where present) indicates the fraction of residues that have poor fit to the electron density. The numeric value is given above the bar.

Mol	Chain	Length	Quality of chain
1	A	573	<div> <div>%</div> <div> <div></div> <div>93%</div> <div>5% •</div> </div> </div>
1	B	573	<div> <div>%</div> <div> <div></div> <div>96%</div> <div>• •</div> </div> </div>
1	C	573	<div> <div>%</div> <div> <div></div> <div>94%</div> <div>• •</div> </div> </div>
1	D	573	<div> <div>%</div> <div> <div></div> <div>96%</div> <div>• •</div> </div> </div>

## 2 Entry composition

There are 6 unique types of molecules in this entry. The entry contains 18002 atoms, of which 0 are hydrogens and 0 are deuteriums.

In the tables below, the ZeroOcc column contains the number of atoms modelled with zero occupancy, the AltConf column contains the number of residues with at least one atom in alternate conformation and the Trace column contains the number of residues modelled with at most 2 atoms.

- Molecule 1 is a protein called Carboxyethylarginine synthase.

Mol	Chain	Residues	Atoms					ZeroOcc	AltConf	Trace
1	A	563	Total	C	N	O	S	43	0	0
			4227	2681	729	804	13			
1	B	563	Total	C	N	O	S	36	1	0
			4235	2686	732	804	13			
1	C	551	Total	C	N	O	S	48	3	0
			4165	2643	719	789	14			
1	D	563	Total	C	N	O	S	65	0	0
			4227	2681	729	804	13			

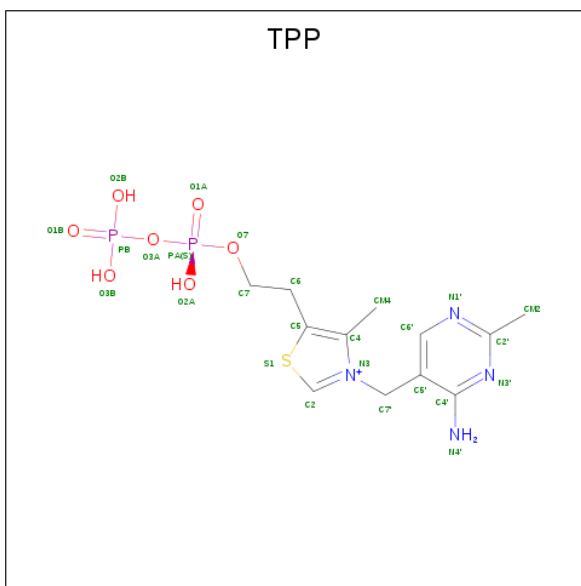
- Molecule 2 is MAGNESIUM ION (three-letter code: MG) (formula: Mg).

Mol	Chain	Residues	Atoms		ZeroOcc	AltConf
2	B	1	Total	Mg	0	0
			1	1		
2	A	1	Total	Mg	0	0
			1	1		
2	D	1	Total	Mg	0	0
			1	1		
2	C	1	Total	Mg	0	0
			1	1		

- Molecule 3 is POTASSIUM ION (three-letter code: K) (formula: K).

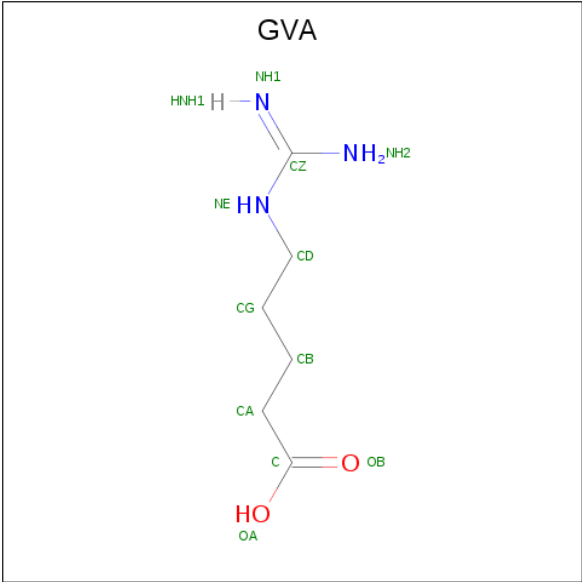
Mol	Chain	Residues	Atoms		ZeroOcc	AltConf
3	B	2	Total	K	0	0
			2	2		
3	A	1	Total	K	0	0
			1	1		
3	D	1	Total	K	0	0
			1	1		
3	C	2	Total	K	0	0
			2	2		

- Molecule 4 is THIAMINE DIPHOSPHATE (three-letter code: TPP) (formula:  $C_{12}H_{19}N_4O_7P_2S$ ).



Mol	Chain	Residues	Atoms						ZeroOcc	AltConf
4	A	1	Total	C	N	O	P	S	0	0
			26	12	4	7	2	1		
4	B	1	Total	C	N	O	P	S	0	0
			26	12	4	7	2	1		
4	C	1	Total	C	N	O	P	S	0	0
			26	12	4	7	2	1		
4	D	1	Total	C	N	O	P	S	0	0
			26	12	4	7	2	1		

- Molecule 5 is 5-[AMINO(IMINO)METHYL]AMINO}PENTANOIC ACID (three-letter code: GVA) (formula:  $C_6H_{13}N_3O_2$ ).



Mol	Chain	Residues	Atoms				ZeroOcc	AltConf
5	A	1	Total	C	N	O	0	0
			11	6	3	2		
5	B	1	Total	C	N	O	0	0
			11	6	3	2		
5	C	1	Total	C	N	O	0	0
			11	6	3	2		
5	D	1	Total	C	N	O	0	0
			11	6	3	2		

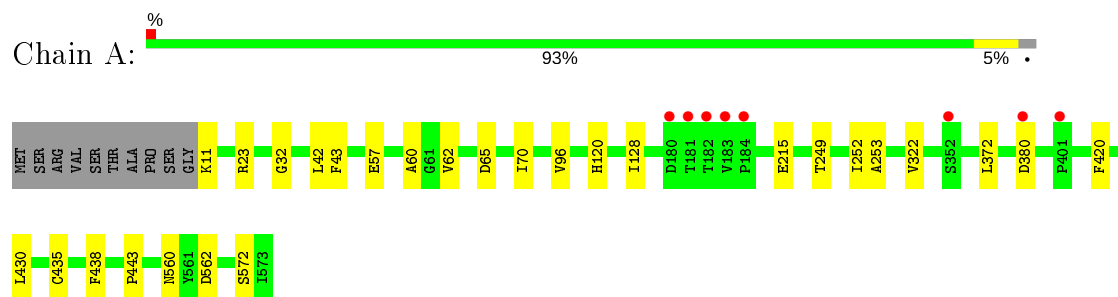
- Molecule 6 is water.

Mol	Chain	Residues	Atoms		ZeroOcc	AltConf
6	A	259	Total	O	0	0
			259	259		
6	B	260	Total	O	0	0
			260	260		
6	C	234	Total	O	0	0
			234	234		
6	D	237	Total	O	0	0
			237	237		

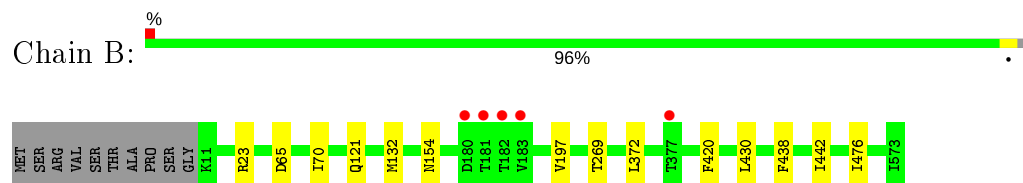
### 3 Residue-property plots [i](#)

These plots are drawn for all protein, RNA and DNA chains in the entry. The first graphic for a chain summarises the proportions of the various outlier classes displayed in the second graphic. The second graphic shows the sequence view annotated by issues in geometry and electron density. Residues are color-coded according to the number of geometric quality criteria for which they contain at least one outlier: green = 0, yellow = 1, orange = 2 and red = 3 or more. A red dot above a residue indicates a poor fit to the electron density ( $RSRZ > 2$ ). Stretches of 2 or more consecutive residues without any outlier are shown as a green connector. Residues present in the sample, but not in the model, are shown in grey.

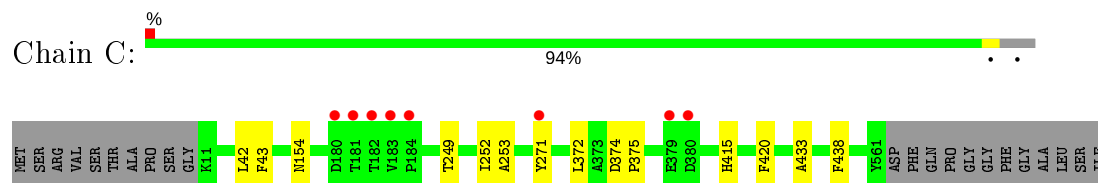
#### • Molecule 1: Carboxyethylarginine synthase



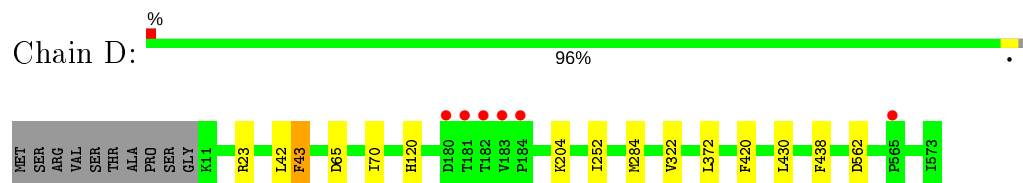
#### • Molecule 1: Carboxyethylarginine synthase



#### • Molecule 1: Carboxyethylarginine synthase



#### • Molecule 1: Carboxyethylarginine synthase



## 4 Data and refinement statistics

Property	Value	Source
Space group	P 21 21 21	Depositor
Cell constants a, b, c, $\alpha$ , $\beta$ , $\gamma$	120.74Å 128.30Å 197.64Å 90.00° 90.00° 90.00°	Depositor
Resolution (Å)	49.15 – 2.30 49.15 – 2.30	Depositor EDS
% Data completeness (in resolution range)	96.5 (49.15-2.30) 96.5 (49.15-2.30)	Depositor EDS
$R_{merge}$	0.12	Depositor
$R_{sym}$	(Not available)	Depositor
$\langle I/\sigma(I) \rangle$ <sup>1</sup>	3.65 (at 2.29Å)	Xtriage
Refinement program	REFMAC	Depositor
R, $R_{free}$	0.161 , 0.192 0.161 , 0.190	Depositor DCC
$R_{free}$ test set	6386 reflections (4.85%)	wwPDB-VP
Wilson B-factor (Å <sup>2</sup> )	25.0	Xtriage
Anisotropy	0.581	Xtriage
Bulk solvent $k_{sol}$ (e/Å <sup>3</sup> ), $B_{sol}$ (Å <sup>2</sup> )	0.36 , 38.2	EDS
L-test for twinning <sup>2</sup>	$\langle  L  \rangle = 0.49$ , $\langle L^2 \rangle = 0.32$	Xtriage
Estimated twinning fraction	No twinning to report.	Xtriage
$F_o, F_c$ correlation	0.96	EDS
Total number of atoms	18002	wwPDB-VP
Average B, all atoms (Å <sup>2</sup> )	23.0	wwPDB-VP

Xtriage's analysis on translational NCS is as follows: *The largest off-origin peak in the Patterson function is 2.89% of the height of the origin peak. No significant pseudotranslation is detected.*

<sup>1</sup>Intensities estimated from amplitudes.

<sup>2</sup>Theoretical values of  $\langle |L| \rangle$ ,  $\langle L^2 \rangle$  for acentric reflections are 0.5, 0.333 respectively for untwinned datasets, and 0.375, 0.2 for perfectly twinned datasets.

## 5 Model quality [i](#)

### 5.1 Standard geometry [i](#)

Bond lengths and bond angles in the following residue types are not validated in this section: K, GVA, MG, TPP

The Z score for a bond length (or angle) is the number of standard deviations the observed value is removed from the expected value. A bond length (or angle) with  $|Z| > 5$  is considered an outlier worth inspection. RMSZ is the root-mean-square of all Z scores of the bond lengths (or angles).

Mol	Chain	Bond lengths		Bond angles	
		RMSZ	$\# Z  > 5$	RMSZ	$\# Z  > 5$
1	A	0.57	2/4323 (0.0%)	0.60	1/5903 (0.0%)
1	B	0.54	0/4334	0.60	0/5917
1	C	0.54	0/4266	0.58	0/5827
1	D	0.57	2/4323 (0.0%)	0.61	1/5903 (0.0%)
All	All	0.55	4/17246 (0.0%)	0.60	2/23550 (0.0%)

All (4) bond length outliers are listed below:

Mol	Chain	Res	Type	Atoms	Z	Observed(Å)	Ideal(Å)
1	A	11	LYS	CB-CG	-8.01	1.30	1.52
1	D	204	LYS	CB-CG	-7.07	1.33	1.52
1	D	562	ASP	CB-CG	-6.88	1.37	1.51
1	A	215	GLU	CB-CG	-6.35	1.40	1.52

All (2) bond angle outliers are listed below:

Mol	Chain	Res	Type	Atoms	Z	Observed(°)	Ideal(°)
1	A	562	ASP	CB-CG-OD2	8.99	126.39	118.30
1	D	562	ASP	CB-CG-OD2	7.47	125.02	118.30

There are no chirality outliers.

There are no planarity outliers.

### 5.2 Too-close contacts [i](#)

In the following table, the Non-H and H(model) columns list the number of non-hydrogen atoms and hydrogen atoms in the chain respectively. The H(added) column lists the number of hydrogen atoms added and optimized by MolProbity. The Clashes column lists the number of clashes within the asymmetric unit, whereas Symm-Clashes lists symmetry related clashes.



Mol	Chain	Non-H	H(model)	H(added)	Clashes	Symm-Clashes
1	A	4227	0	4179	15	0
1	B	4235	0	4192	7	0
1	C	4165	0	4125	10	0
1	D	4227	0	4179	7	0
2	A	1	0	0	0	0
2	B	1	0	0	0	0
2	C	1	0	0	0	0
2	D	1	0	0	0	0
3	A	1	0	0	0	0
3	B	2	0	0	0	0
3	C	2	0	0	0	0
3	D	1	0	0	0	0
4	A	26	0	16	4	0
4	B	26	0	16	4	0
4	C	26	0	16	3	0
4	D	26	0	16	4	0
5	A	11	0	11	0	0
5	B	11	0	11	1	0
5	C	11	0	11	0	0
5	D	11	0	11	0	0
6	A	259	0	0	1	0
6	B	260	0	0	0	0
6	C	234	0	0	0	0
6	D	237	0	0	1	0
All	All	18002	0	16783	46	0

The all-atom clashscore is defined as the number of clashes found per 1000 atoms (including hydrogen atoms). The all-atom clashscore for this structure is 1.

All (46) close contacts within the same asymmetric unit are listed below, sorted by their clash magnitude.

Atom-1	Atom-2	Interatomic distance (Å)	Clash overlap (Å)
4:D:600:TPP:C2	4:D:600:TPP:HN42	1.61	1.12
4:A:600:TPP:H2	4:A:600:TPP:HN42	1.16	1.11
4:A:600:TPP:HN42	4:A:600:TPP:C2	1.69	1.05
4:D:600:TPP:HN42	4:D:600:TPP:H2	1.18	1.04
4:B:600:TPP:C2	4:B:600:TPP:HN42	1.71	1.04
4:C:600:TPP:C2	4:C:600:TPP:HN42	1.79	0.96
4:B:600:TPP:HN42	4:B:600:TPP:H2	1.31	0.96
4:C:600:TPP:H2	4:C:600:TPP:HN42	1.31	0.95
4:D:600:TPP:C2	4:D:600:TPP:N4'	2.32	0.91
4:A:600:TPP:N4'	4:A:600:TPP:C2	2.35	0.88

*Continued on next page...*

*Continued from previous page...*

Atom-1	Atom-2	Interatomic distance (Å)	Clash overlap (Å)
4:B:600:TPP:C2	4:B:600:TPP:N4'	2.42	0.81
4:C:600:TPP:C2	4:C:600:TPP:N4'	2.47	0.77
1:C:271[A]:TYR:CE2	1:C:415[A]:HIS:NE2	2.68	0.62
1:C:271[A]:TYR:CZ	1:C:415[A]:HIS:NE2	2.45	0.61
1:A:435:CYS:O	1:B:121:GLN:HG2	2.10	0.52
1:A:128:ILE:HD13	1:B:132:MET:HE3	1.92	0.52
1:C:433:ALA:O	1:D:120:HIS:CD2	2.63	0.51
1:D:252:ILE:HG12	6:D:770:HOH:O	2.11	0.50
1:A:322:VAL:HG11	1:C:154:ASN:HB3	1.93	0.49
1:A:252:ILE:HG12	6:A:609:HOH:O	2.12	0.49
1:A:372:LEU:HD21	1:A:420:PHE:HB3	1.94	0.48
1:C:433:ALA:O	1:D:120:HIS:HD2	1.97	0.48
1:B:70:ILE:HD11	1:B:430:LEU:HD11	1.95	0.47
1:C:372:LEU:HD21	1:C:420:PHE:HB3	1.97	0.47
1:A:249:THR:HB	1:A:253:ALA:HB3	1.96	0.47
1:A:62:VAL:HB	1:A:443:PRO:HB2	1.98	0.46
1:C:249:THR:HB	1:C:253:ALA:HB3	1.98	0.46
1:D:70:ILE:HD11	1:D:430:LEU:HD11	1.98	0.45
1:A:128:ILE:CD1	1:B:132:MET:HE3	2.46	0.45
1:A:380:ASP:HB2	1:A:560:ASN:ND2	2.32	0.45
1:B:154:ASN:HB3	1:D:322:VAL:HG11	1.97	0.45
1:C:374:ASP:HA	1:C:375:PRO:HD3	1.84	0.45
4:D:600:TPP:H2	4:D:600:TPP:N4'	2.03	0.44
1:D:372:LEU:HD21	1:D:420:PHE:HB3	1.99	0.44
1:A:42:LEU:O	1:A:43:PHE:HB2	2.17	0.44
1:A:120:HIS:HE1	5:B:603:GVA:HA2	1.82	0.43
4:A:600:TPP:H2	4:A:600:TPP:N4'	1.99	0.43
1:A:70:ILE:HD11	1:A:430:LEU:HD11	2.00	0.43
1:C:271[A]:TYR:CD2	1:C:415[A]:HIS:NE2	2.84	0.43
1:B:372:LEU:HD21	1:B:420:PHE:HB3	2.01	0.42
1:D:42:LEU:O	1:D:43:PHE:HB2	2.19	0.42
1:B:442:ILE:HG23	1:B:476:ILE:HD11	2.01	0.42
1:C:42:LEU:O	1:C:43:PHE:HB2	2.20	0.41
1:A:57:GLU:OE2	4:B:600:TPP:N1'	2.54	0.41
1:A:380:ASP:HB2	1:A:560:ASN:HD22	1.84	0.41
1:A:32:GLY:HA2	1:A:60:ALA:CB	2.51	0.41

There are no symmetry-related clashes.

## 5.3 Torsion angles

### 5.3.1 Protein backbone

In the following table, the Percentiles column shows the percent Ramachandran outliers of the chain as a percentile score with respect to all X-ray entries followed by that with respect to entries of similar resolution.

The Analysed column shows the number of residues for which the backbone conformation was analysed, and the total number of residues.

Mol	Chain	Analysed	Favoured	Allowed	Outliers	Percentiles	
1	A	561/573 (98%)	551 (98%)	10 (2%)	0	100	100
1	B	562/573 (98%)	546 (97%)	16 (3%)	0	100	100
1	C	552/573 (96%)	538 (98%)	14 (2%)	0	100	100
1	D	561/573 (98%)	548 (98%)	12 (2%)	1 (0%)	47	58
All	All	2236/2292 (98%)	2183 (98%)	52 (2%)	1 (0%)	100	100

All (1) Ramachandran outliers are listed below:

Mol	Chain	Res	Type
1	D	43	PHE

### 5.3.2 Protein sidechains

In the following table, the Percentiles column shows the percent sidechain outliers of the chain as a percentile score with respect to all X-ray entries followed by that with respect to entries of similar resolution.

The Analysed column shows the number of residues for which the sidechain conformation was analysed, and the total number of residues.

Mol	Chain	Analysed	Rotameric	Outliers	Percentiles	
1	A	444/452 (98%)	439 (99%)	5 (1%)	73	86
1	B	445/452 (98%)	439 (99%)	6 (1%)	69	82
1	C	439/452 (97%)	437 (100%)	2 (0%)	88	95
1	D	444/452 (98%)	440 (99%)	4 (1%)	78	89
All	All	1772/1808 (98%)	1755 (99%)	17 (1%)	78	87

All (17) residues with a non-rotameric sidechain are listed below:

Mol	Chain	Res	Type
1	A	23	ARG
1	A	65	ASP
1	A	96	VAL
1	A	438	PHE
1	A	572	SER
1	B	23[A]	ARG
1	B	23[B]	ARG
1	B	65	ASP
1	B	197	VAL
1	B	269	THR
1	B	438	PHE
1	C	252	ILE
1	C	438	PHE
1	D	23	ARG
1	D	65	ASP
1	D	284	MET
1	D	438	PHE

Some sidechains can be flipped to improve hydrogen bonding and reduce clashes. All (15) such sidechains are listed below:

Mol	Chain	Res	Type
1	A	120	HIS
1	A	140	GLN
1	A	189	ASN
1	B	16	HIS
1	B	120	HIS
1	B	189	ASN
1	B	308	GLN
1	C	120	HIS
1	C	189	ASN
1	C	308	GLN
1	D	120	HIS
1	D	140	GLN
1	D	308	GLN
1	D	385	HIS
1	D	508	HIS

### 5.3.3 RNA ⓘ

There are no RNA molecules in this entry.

## 5.4 Non-standard residues in protein, DNA, RNA chains [i](#)

There are no non-standard protein/DNA/RNA residues in this entry.

## 5.5 Carbohydrates [i](#)

There are no carbohydrates in this entry.

## 5.6 Ligand geometry [i](#)

Of 18 ligands modelled in this entry, 10 are monoatomic - leaving 8 for Mogul analysis.

In the following table, the Counts columns list the number of bonds (or angles) for which Mogul statistics could be retrieved, the number of bonds (or angles) that are observed in the model and the number of bonds (or angles) that are defined in the Chemical Component Dictionary. The Link column lists molecule types, if any, to which the group is linked. The Z score for a bond length (or angle) is the number of standard deviations the observed value is removed from the expected value. A bond length (or angle) with  $|Z| > 2$  is considered an outlier worth inspection. RMSZ is the root-mean-square of all Z scores of the bond lengths (or angles).

Mol	Type	Chain	Res	Link	Bond lengths			Bond angles		
					Counts	RMSZ	# $ Z  > 2$	Counts	RMSZ	# $ Z  > 2$
4	TPP	A	600	2	22,27,27	1.61	6 (27%)	29,40,40	2.24	8 (27%)
5	GVA	A	603	-	7,10,10	0.51	0	6,11,11	0.59	0
5	GVA	C	603	-	7,10,10	0.56	0	6,11,11	0.47	0
4	TPP	C	600	2	22,27,27	1.69	6 (27%)	29,40,40	2.13	9 (31%)
4	TPP	B	600	2	22,27,27	1.85	5 (22%)	29,40,40	2.25	7 (24%)
5	GVA	B	603	-	7,10,10	0.55	0	6,11,11	0.42	0
4	TPP	D	600	2	22,27,27	1.73	5 (22%)	29,40,40	2.18	6 (20%)
5	GVA	D	603	-	7,10,10	0.57	0	6,11,11	0.85	0

In the following table, the Chirals column lists the number of chiral outliers, the number of chiral centers analysed, the number of these observed in the model and the number defined in the Chemical Component Dictionary. Similar counts are reported in the Torsion and Rings columns. '-' means no outliers of that kind were identified.

Mol	Type	Chain	Res	Link	Chirals	Torsions	Rings
4	TPP	A	600	2	-	2/16/17/17	0/2/2/2
5	GVA	A	603	-	-	2/6/8/8	-
5	GVA	C	603	-	-	0/6/8/8	-
4	TPP	C	600	2	-	2/16/17/17	0/2/2/2
4	TPP	B	600	2	-	3/16/17/17	0/2/2/2

*Continued on next page...*

*Continued from previous page...*

Mol	Type	Chain	Res	Link	Chirals	Torsions	Rings
5	GVA	B	603	-	-	1/6/8/8	-
4	TPP	D	600	2	-	5/16/17/17	0/2/2/2
5	GVA	D	603	-	-	2/6/8/8	-

All (22) bond length outliers are listed below:

Mol	Chain	Res	Type	Atoms	Z	Observed(Å)	Ideal(Å)
4	B	600	TPP	C4-N3	-5.56	1.34	1.39
4	C	600	TPP	C4-N3	-4.74	1.35	1.39
4	A	600	TPP	C4-N3	-4.71	1.35	1.39
4	D	600	TPP	C4-N3	-4.63	1.35	1.39
4	D	600	TPP	C4'-N3'	2.89	1.39	1.35
4	B	600	TPP	C7'-N3	-2.85	1.43	1.48
4	D	600	TPP	C2'-N1'	2.79	1.38	1.34
4	B	600	TPP	C2'-N1'	2.78	1.38	1.34
4	D	600	TPP	C6'-N1'	2.77	1.40	1.34
4	B	600	TPP	C4'-N3'	2.74	1.38	1.35
4	C	600	TPP	C2'-N1'	2.71	1.38	1.34
4	A	600	TPP	C7'-N3	-2.67	1.43	1.48
4	B	600	TPP	C6'-N1'	2.59	1.39	1.34
4	C	600	TPP	C4'-N3'	2.57	1.38	1.35
4	C	600	TPP	C7'-N3	-2.56	1.43	1.48
4	A	600	TPP	C6'-N1'	2.41	1.39	1.34
4	C	600	TPP	C6'-N1'	2.39	1.39	1.34
4	A	600	TPP	C2'-N1'	2.33	1.38	1.34
4	D	600	TPP	C7'-N3	-2.25	1.44	1.48
4	A	600	TPP	C4'-N3'	2.09	1.38	1.35
4	A	600	TPP	C2'-N3'	2.03	1.37	1.34
4	C	600	TPP	C2'-N3'	2.02	1.37	1.34

All (30) bond angle outliers are listed below:

Mol	Chain	Res	Type	Atoms	Z	Observed(°)	Ideal(°)
4	A	600	TPP	C5'-C7'-N3	-7.99	99.98	113.28
4	B	600	TPP	C5'-C7'-N3	-7.27	101.17	113.28
4	D	600	TPP	C5'-C7'-N3	-6.79	101.97	113.28
4	C	600	TPP	C5'-C7'-N3	-6.39	102.65	113.28
4	B	600	TPP	CM2-C2'-N1'	5.20	122.85	117.14
4	D	600	TPP	CM2-C2'-N1'	5.05	122.70	117.14
4	C	600	TPP	CM2-C2'-N1'	4.34	121.91	117.14
4	B	600	TPP	N1'-C2'-N3'	-4.14	118.42	125.54
4	A	600	TPP	CM2-C2'-N1'	3.96	121.49	117.14

*Continued on next page...*

*Continued from previous page...*

Mol	Chain	Res	Type	Atoms	Z	Observed(°)	Ideal(°)
4	D	600	TPP	C6-C5-C4	3.84	130.52	127.43
4	D	600	TPP	N1'-C2'-N3'	-3.82	118.96	125.54
4	C	600	TPP	C6-C5-C4	3.72	130.42	127.43
4	C	600	TPP	N1'-C2'-N3'	-3.69	119.19	125.54
4	A	600	TPP	N1'-C2'-N3'	-3.53	119.46	125.54
4	C	600	TPP	C6'-N1'-C2'	3.35	121.66	115.96
4	A	600	TPP	C6'-N1'-C2'	3.32	121.61	115.96
4	B	600	TPP	C6'-N1'-C2'	3.12	121.27	115.96
4	D	600	TPP	C6'-N1'-C2'	2.98	121.03	115.96
4	A	600	TPP	CM4-C4-N3	2.90	126.23	122.53
4	B	600	TPP	C6-C5-C4	2.80	129.68	127.43
4	B	600	TPP	PA-O3A-PB	-2.77	123.33	132.83
4	B	600	TPP	CM4-C4-N3	2.64	125.90	122.53
4	C	600	TPP	PA-O3A-PB	-2.59	123.95	132.83
4	C	600	TPP	C5'-C6'-N1'	-2.55	119.58	123.82
4	A	600	TPP	C5'-C6'-N1'	-2.17	120.21	123.82
4	C	600	TPP	CM4-C4-N3	2.15	125.27	122.53
4	A	600	TPP	O2B-PB-O3A	2.14	111.81	104.64
4	C	600	TPP	O2B-PB-O3A	2.07	111.57	104.64
4	A	600	TPP	PA-O3A-PB	-2.06	125.74	132.83
4	D	600	TPP	CM4-C4-N3	2.05	125.15	122.53

There are no chirality outliers.

All (17) torsion outliers are listed below:

Mol	Chain	Res	Type	Atoms
4	A	600	TPP	C4'-C5'-C7'-N3
4	A	600	TPP	PB-O3A-PA-O7
5	A	603	GVA	NH2-CZ-NE-CD
4	C	600	TPP	C4'-C5'-C7'-N3
4	B	600	TPP	C4'-C5'-C7'-N3
4	B	600	TPP	PB-O3A-PA-O7
4	D	600	TPP	C4'-C5'-C7'-N3
4	D	600	TPP	PA-O3A-PB-O1B
5	D	603	GVA	CA-CB-CG-CD
4	C	600	TPP	PB-O3A-PA-O7
4	D	600	TPP	PA-O3A-PB-O3B
5	A	603	GVA	C-CA-CB-CG
5	D	603	GVA	C-CA-CB-CG
4	D	600	TPP	C6'-C5'-C7'-N3
4	D	600	TPP	C5-C6-C7-O7
5	B	603	GVA	C-CA-CB-CG

*Continued on next page...*

*Continued from previous page...*

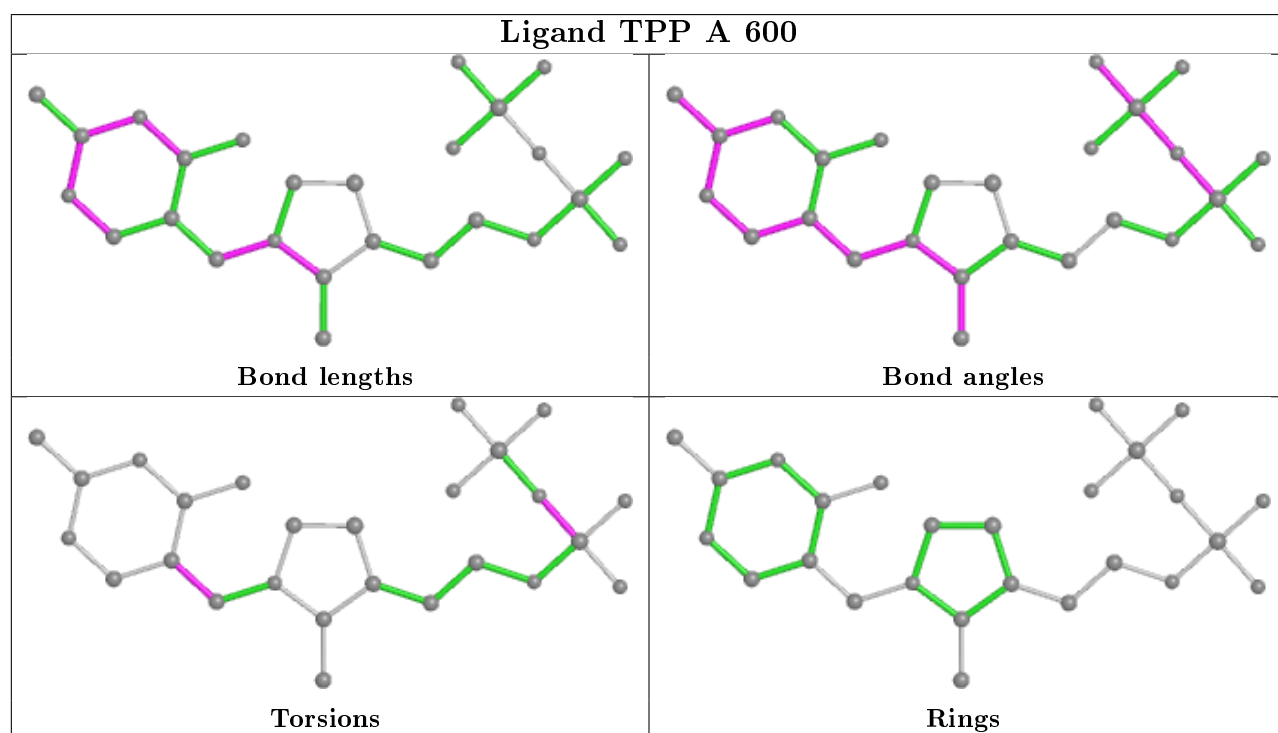
Mol	Chain	Res	Type	Atoms
4	B	600	TPP	C6'-C5'-C7'-N3

There are no ring outliers.

5 monomers are involved in 16 short contacts:

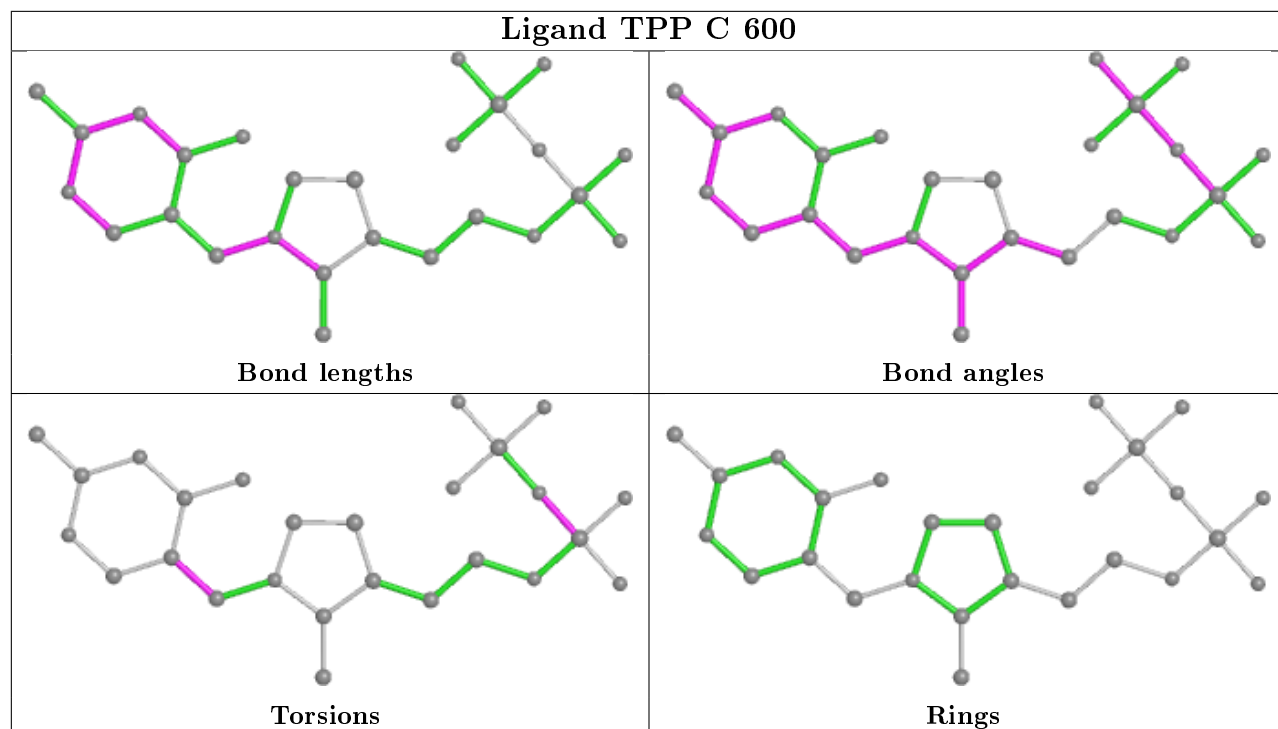
Mol	Chain	Res	Type	Clashes	Symm-Clashes
4	A	600	TPP	4	0
4	C	600	TPP	3	0
4	B	600	TPP	4	0
5	B	603	GVA	1	0
4	D	600	TPP	4	0

The following is a two-dimensional graphical depiction of Mogul quality analysis of bond lengths, bond angles, torsion angles, and ring geometry for all instances of the Ligand of Interest. In addition, ligands with molecular weight > 250 and outliers as shown on the validation Tables will also be included. For torsion angles, if less than 5% of the Mogul distribution of torsion angles is within 10 degrees of the torsion angle in question, then that torsion angle is considered an outlier. Any bond that is central to one or more torsion angles identified as an outlier by Mogul will be highlighted in the graph. For rings, the root-mean-square deviation (RMSD) between the ring in question and similar rings identified by Mogul is calculated over all ring torsion angles. If the average RMSD is greater than 60 degrees and the minimal RMSD between the ring in question and any Mogul-identified rings is also greater than 60 degrees, then that ring is considered an outlier. The outliers are highlighted in purple. The color gray indicates Mogul did not find sufficient equivalents in the CSD to analyse the geometry.

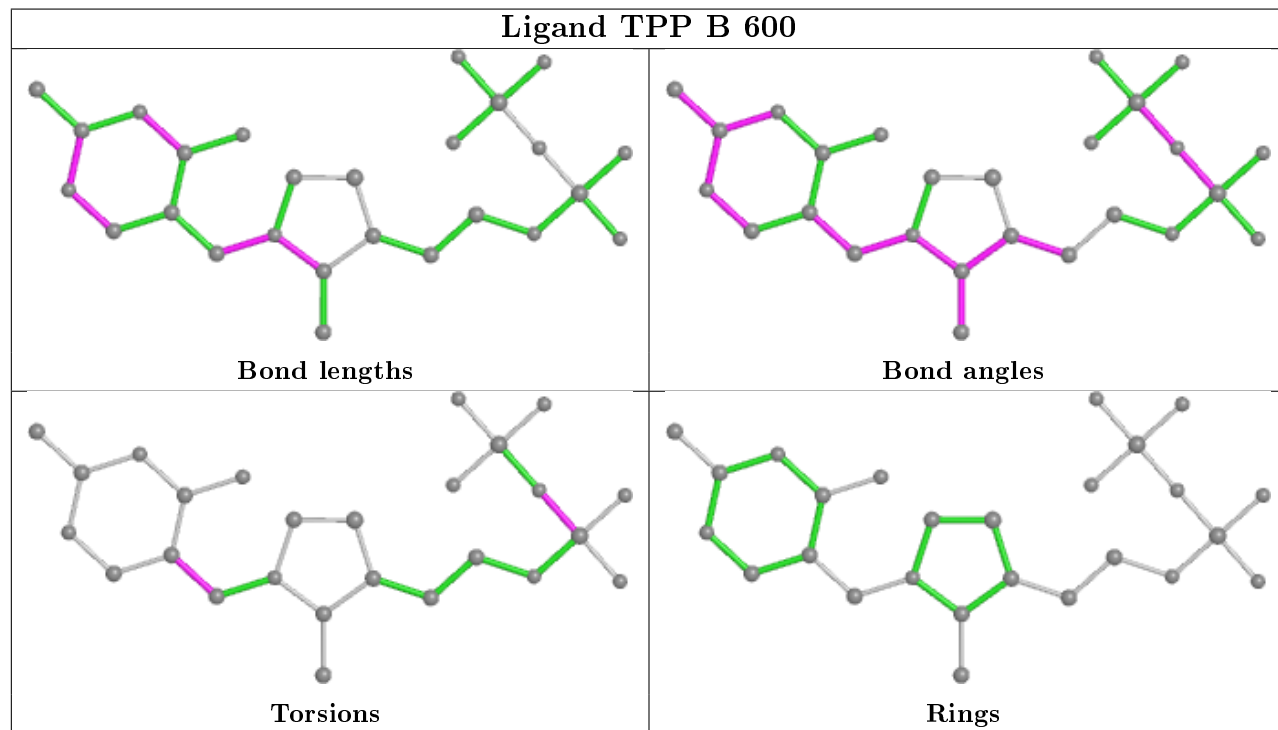


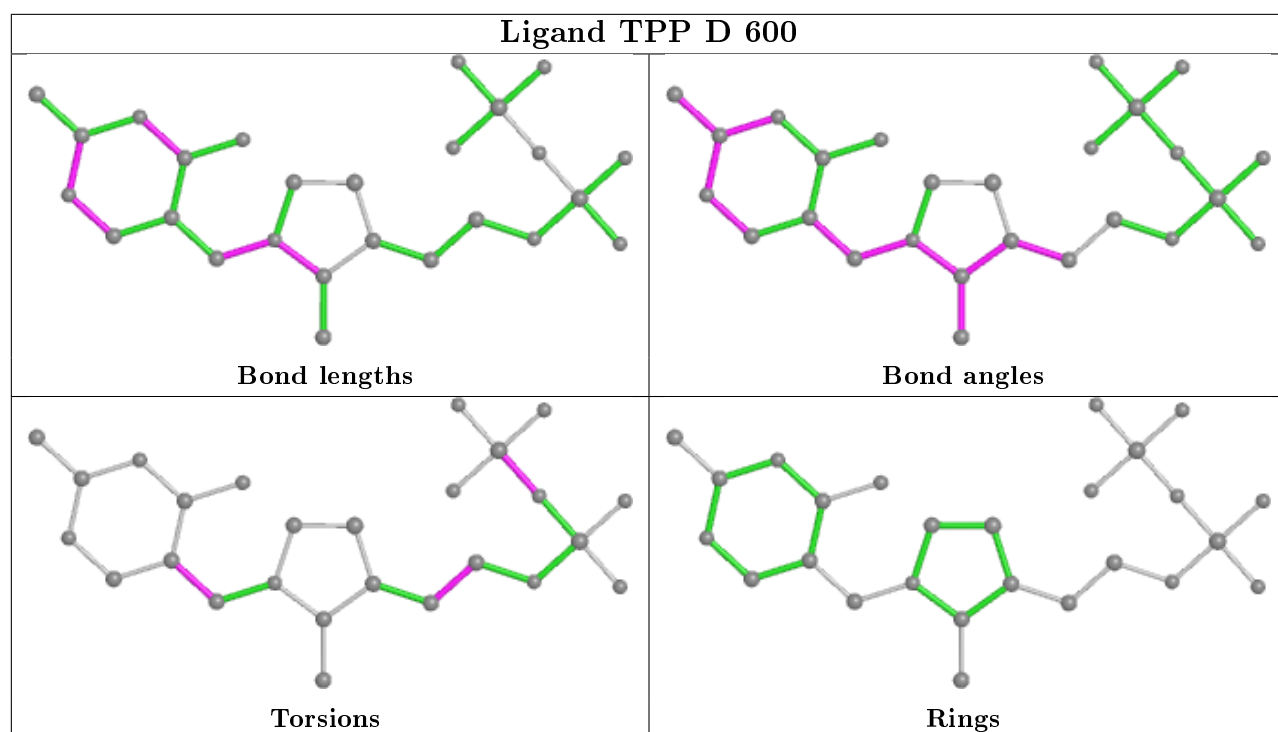


## Ligand TPP C 600



## Ligand TPP B 600





## 5.7 Other polymers [i](#)

There are no such residues in this entry.

## 5.8 Polymer linkage issues [i](#)

There are no chain breaks in this entry.

## 6 Fit of model and data ⓘ

### 6.1 Protein, DNA and RNA chains ⓘ

In the following table, the column labelled ‘#RSRZ> 2’ contains the number (and percentage) of RSRZ outliers, followed by percent RSRZ outliers for the chain as percentile scores relative to all X-ray entries and entries of similar resolution. The OWAB column contains the minimum, median, 95<sup>th</sup> percentile and maximum values of the occupancy-weighted average B-factor per residue. The column labelled ‘Q< 0.9’ lists the number of (and percentage) of residues with an average occupancy less than 0.9.

Mol	Chain	Analysed	<RSRZ>	#RSRZ>2	OWAB(Å <sup>2</sup> )	Q<0.9
1	A	563/573 (98%)	-0.39	8 (1%) 75 80	14, 22, 33, 52	19 (3%)
1	B	563/573 (98%)	-0.54	5 (0%) 84 88	14, 22, 34, 52	18 (3%)
1	C	551/573 (96%)	-0.48	8 (1%) 73 79	14, 22, 35, 53	23 (4%)
1	D	563/573 (98%)	-0.46	6 (1%) 80 85	14, 22, 34, 53	24 (4%)
All	All	2240/2292 (97%)	-0.47	27 (1%) 79 83	14, 22, 34, 53	84 (3%)

All (27) RSRZ outliers are listed below:

Mol	Chain	Res	Type	RSRZ
1	D	182	THR	6.2
1	C	182	THR	5.5
1	D	183	VAL	5.4
1	A	182	THR	5.3
1	A	183	VAL	4.6
1	B	181	THR	4.5
1	A	181	THR	4.1
1	C	183	VAL	4.1
1	B	183	VAL	3.7
1	B	182	THR	3.6
1	A	180	ASP	3.4
1	D	184	PRO	3.2
1	C	181	THR	3.1
1	A	184	PRO	3.0
1	D	180	ASP	3.0
1	D	181	THR	2.9
1	C	271[A]	TYR	2.8
1	C	379	GLU	2.6
1	B	180	ASP	2.6
1	D	565	PRO	2.6
1	C	380	ASP	2.5

*Continued on next page...*

*Continued from previous page...*

Mol	Chain	Res	Type	RSRZ
1	C	180	ASP	2.4
1	A	352	SER	2.4
1	A	401	PRO	2.4
1	C	184	PRO	2.3
1	B	377	THR	2.1
1	A	380	ASP	2.0

## 6.2 Non-standard residues in protein, DNA, RNA chains [i](#)

There are no non-standard protein/DNA/RNA residues in this entry.

## 6.3 Carbohydrates [i](#)

There are no carbohydrates in this entry.

## 6.4 Ligands [i](#)

In the following table, the Atoms column lists the number of modelled atoms in the group and the number defined in the chemical component dictionary. The B-factors column lists the minimum, median, 95<sup>th</sup> percentile and maximum values of B factors of atoms in the group. The column labelled 'Q< 0.9' lists the number of atoms with occupancy less than 0.9.

Mol	Type	Chain	Res	Atoms	RSCC	RSR	B-factors(Å <sup>2</sup> )	Q<0.9
5	GVA	C	603	11/11	0.82	0.35	46,47,49,49	11
5	GVA	B	603	11/11	0.93	0.15	45,47,49,49	0
5	GVA	A	603	11/11	0.94	0.14	29,31,34,34	0
5	GVA	D	603	11/11	0.95	0.13	36,38,41,42	0
3	K	C	602	1/1	0.97	0.10	36,36,36,36	0
4	TPP	C	600	26/26	0.97	0.11	23,26,35,38	0
4	TPP	B	600	26/26	0.97	0.12	19,23,28,33	0
3	K	D	602	1/1	0.97	0.05	36,36,36,36	0
2	MG	C	601	1/1	0.97	0.13	10,10,10,10	0
3	K	A	602	1/1	0.98	0.08	36,36,36,36	0
4	TPP	A	600	26/26	0.98	0.11	17,19,25,27	0
3	K	B	602	1/1	0.98	0.05	33,33,33,33	0
4	TPP	D	600	26/26	0.98	0.10	19,23,30,31	0
2	MG	B	601	1/1	0.99	0.12	6,6,6,6	0
3	K	C	996	1/1	0.99	0.11	35,35,35,35	0
2	MG	D	601	1/1	0.99	0.12	7,7,7,7	0
3	K	B	995	1/1	0.99	0.11	35,35,35,35	0

*Continued on next page...*

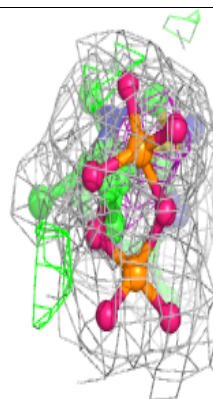
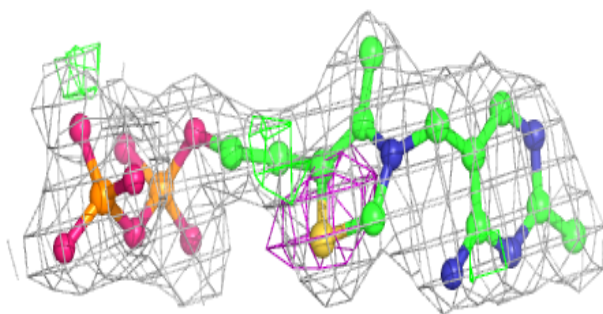
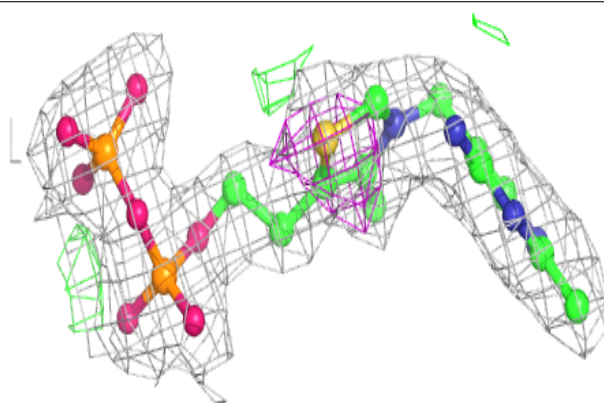
*Continued from previous page...*

Mol	Type	Chain	Res	Atoms	RSCC	RSR	B-factors( $\text{\AA}^2$ )	Q<0.9
2	MG	A	601	1/1	1.00	0.17	5,5,5,5	0

The following is a graphical depiction of the model fit to experimental electron density of all instances of the Ligand of Interest. In addition, ligands with molecular weight > 250 and outliers as shown on the geometry validation Tables will also be included. Each fit is shown from different orientation to approximate a three-dimensional view.

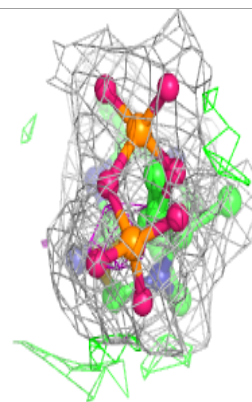
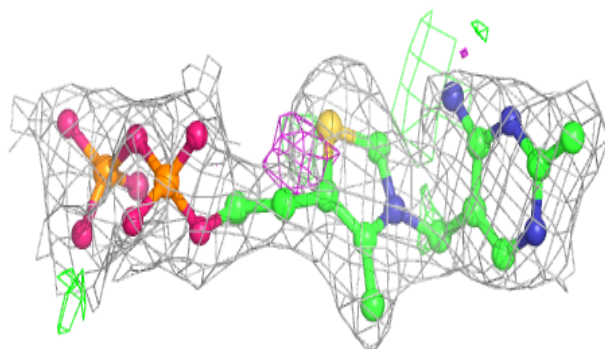
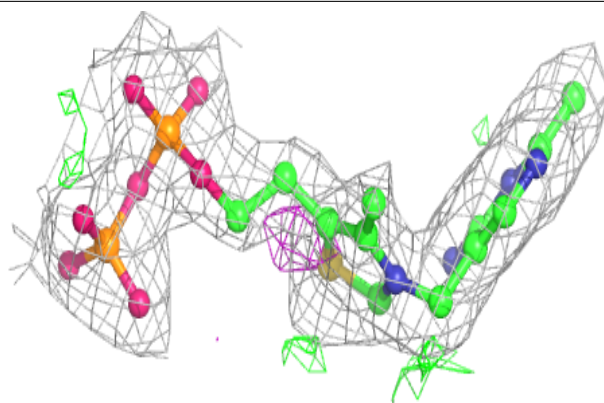
**Electron density around TPP C 600:**

2mF<sub>o</sub>-DF<sub>c</sub> (at 0.7 rmsd) in gray  
mF<sub>o</sub>-DF<sub>c</sub> (at 3 rmsd) in purple (negative)  
and green (positive)

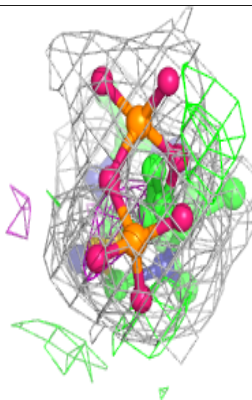
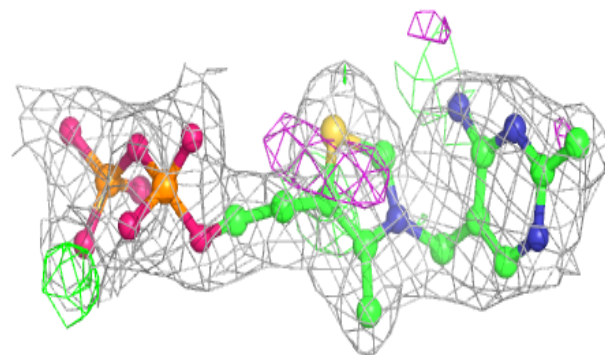
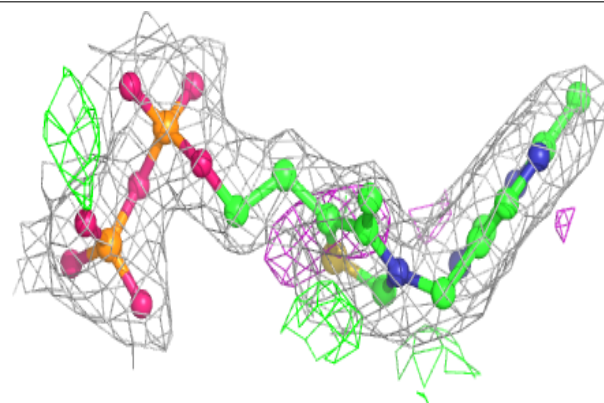


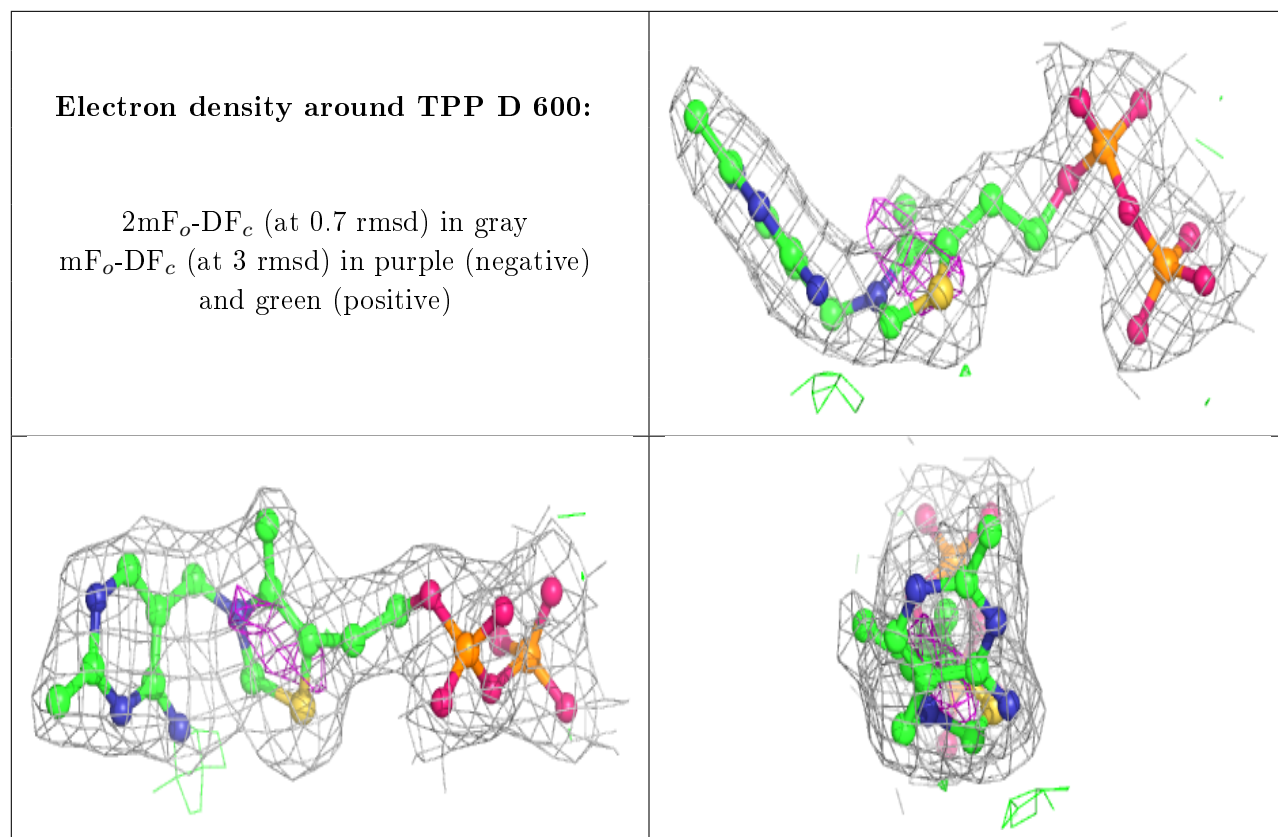
**Electron density around TPP B 600:**

$2mF_o-DF_c$  (at 0.7 rmsd) in gray  
 $mF_o-DF_c$  (at 3 rmsd) in purple (negative)  
and green (positive)

**Electron density around TPP A 600:**

$2mF_o-DF_c$  (at 0.7 rmsd) in gray  
 $mF_o-DF_c$  (at 3 rmsd) in purple (negative)  
and green (positive)





## 6.5 Other polymers [i](#)

There are no such residues in this entry.