



Full wwPDB X-ray Structure Validation Report ⓘ

Jun 7, 2020 – 03:40 am BST

PDB ID : 6IHH
Title : Crystal structure of RasADH F12 from Ralstonia.sp in complex with NADPH and A6O
Authors : Zhang, H.L.; Chen, X.; Liu, W.D.; Wu, Q.Q.; Zhu, D.M.
Deposited on : 2018-09-30
Resolution : 1.80 Å(reported)

This is a Full wwPDB X-ray Structure Validation Report for a publicly released PDB entry.

We welcome your comments at validation@mail.wwpdb.org

A user guide is available at

<https://www.wwpdb.org/validation/2017/XrayValidationReportHelp>

with specific help available everywhere you see the ⓘ symbol.

The following versions of software and data (see [references ⓘ](#)) were used in the production of this report:

MolProbity : 4.02b-467
Mogul : 1.8.5 (274361), CSD as541be (2020)
Xtriage (Phenix) : 1.13
EDS : 2.11
buster-report : 1.1.7 (2018)
Percentile statistics : 20191225.v01 (using entries in the PDB archive December 25th 2019)
Refmac : 5.8.0158
CCP4 : 7.0.044 (Gargrove)
Ideal geometry (proteins) : Engh & Huber (2001)
Ideal geometry (DNA, RNA) : Parkinson et al. (1996)
Validation Pipeline (wwPDB-VP) : 2.11

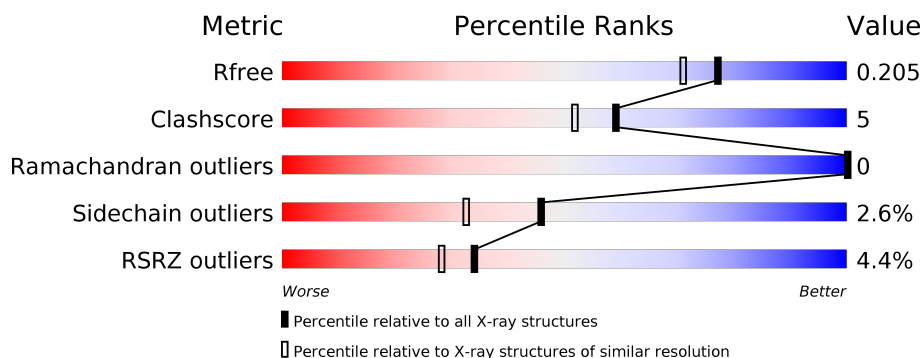
1 Overall quality at a glance

The following experimental techniques were used to determine the structure:

X-RAY DIFFRACTION

The reported resolution of this entry is 1.80 Å.

Percentile scores (ranging between 0-100) for global validation metrics of the entry are shown in the following graphic. The table shows the number of entries on which the scores are based.



Metric	Whole archive (#Entries)	Similar resolution (#Entries, resolution range(Å))
R_{free}	130704	5950 (1.80-1.80)
Clashscore	141614	6793 (1.80-1.80)
Ramachandran outliers	138981	6697 (1.80-1.80)
Sidechain outliers	138945	6696 (1.80-1.80)
RSRZ outliers	127900	5850 (1.80-1.80)

The table below summarises the geometric issues observed across the polymeric chains and their fit to the electron density. The red, orange, yellow and green segments on the lower bar indicate the fraction of residues that contain outliers for ≥ 3 , 2, 1 and 0 types of geometric quality criteria respectively. A grey segment represents the fraction of residues that are not modelled. The numeric value for each fraction is indicated below the corresponding segment, with a dot representing fractions $\leq 5\%$. The upper red bar (where present) indicates the fraction of residues that have poor fit to the electron density. The numeric value is given above the bar.

Mol	Chain	Length	Quality of chain
1	A	249	<div> <div></div> <div> <div></div> <div>94%</div> <div>5%</div> </div> </div>
1	B	249	<div> <div>8%</div> <div> <div></div> <div>87%</div> <div>12%</div> </div> </div>

2 Entry composition

There are 4 unique types of molecules in this entry. The entry contains 4185 atoms, of which 0 are hydrogens and 0 are deuteriums.

In the tables below, the ZeroOcc column contains the number of atoms modelled with zero occupancy, the AltConf column contains the number of residues with at least one atom in alternate conformation and the Trace column contains the number of residues modelled with at most 2 atoms.

- Molecule 1 is a protein called Alcohol dehydrogenase.

Mol	Chain	Residues	Atoms					ZeroOcc	AltConf	Trace
1	A	249	Total	C	N	O	S	0	0	0
			1875	1172	336	366	1			
1	B	249	Total	C	N	O	S	0	0	0
			1875	1172	336	366	1			

There are 10 discrepancies between the modelled and reference sequences:

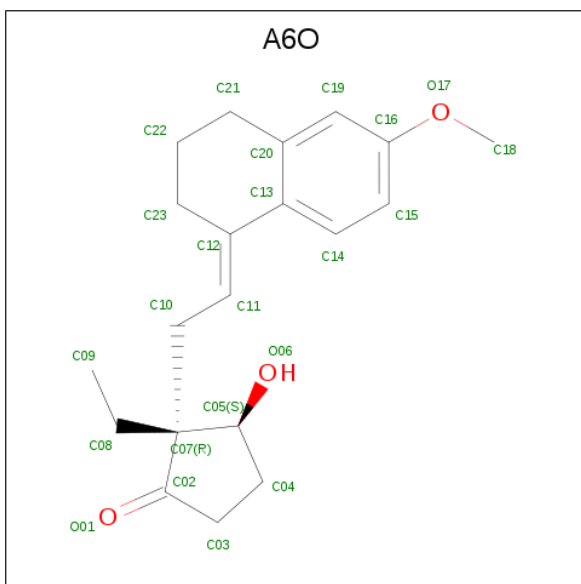
Chain	Residue	Modelled	Actual	Comment	Reference
A	91	VAL	ILE	engineered mutation	UNP C0IR58
A	187	SER	ILE	engineered mutation	UNP C0IR58
A	188	LEU	ILE	engineered mutation	UNP C0IR58
A	191	ASN	GLN	engineered mutation	UNP C0IR58
A	205	ALA	PHE	engineered mutation	UNP C0IR58
B	91	VAL	ILE	engineered mutation	UNP C0IR58
B	187	SER	ILE	engineered mutation	UNP C0IR58
B	188	LEU	ILE	engineered mutation	UNP C0IR58
B	191	ASN	GLN	engineered mutation	UNP C0IR58
B	205	ALA	PHE	engineered mutation	UNP C0IR58

- Molecule 2 is NADP NICOTINAMIDE-ADENINE-DINUCLEOTIDE PHOSPHATE (three-letter code: NAP) (formula: C₂₁H₂₈N₇O₁₇P₃).



Mol	Chain	Residues	Atoms				ZeroOcc	AltConf	
2	A	1	Total 48	C 21	N 7	O 17	P 3	0	0
2	B	1	Total 48	C 21	N 7	O 17	P 3	0	0

- Molecule 3 is (2R,3S)-2-ethyl-2-[(2E)-2-(6-methoxy-3,4-dihydro-2H-naphthalen-1-ylidene)ethyl]-3-oxidanyl-cyclopentan-1-one (three-letter code: A6O) (formula: C₂₀H₂₆O₃).



Mol	Chain	Residues	Atoms			ZeroOcc	AltConf
3	A	1	Total	C	O	0	0
			23	20	3		

- Molecule 4 is water.

Mol	Chain	Residues	Atoms		ZeroOcc	AltConf
4	A	172	Total 172	O 172	0	0
4	B	144	Total 144	O 144	0	0

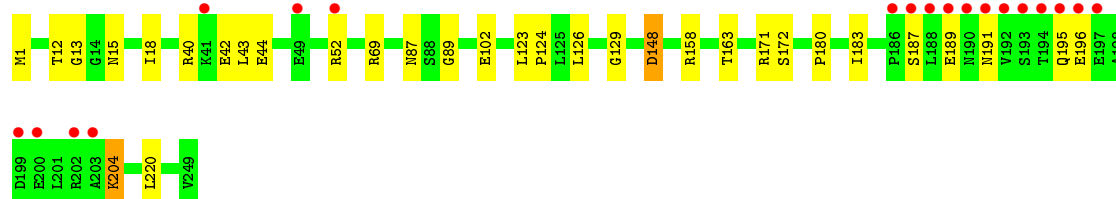
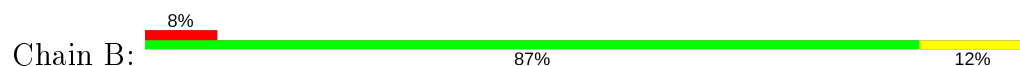
3 Residue-property plots [i](#)

These plots are drawn for all protein, RNA and DNA chains in the entry. The first graphic for a chain summarises the proportions of the various outlier classes displayed in the second graphic. The second graphic shows the sequence view annotated by issues in geometry and electron density. Residues are color-coded according to the number of geometric quality criteria for which they contain at least one outlier: green = 0, yellow = 1, orange = 2 and red = 3 or more. A red dot above a residue indicates a poor fit to the electron density ($RSRZ > 2$). Stretches of 2 or more consecutive residues without any outlier are shown as a green connector. Residues present in the sample, but not in the model, are shown in grey.

- Molecule 1: Alccohol dehydrogenase



- Molecule 1: Alccohol dehydrogenase



4 Data and refinement statistics

Property	Value	Source
Space group	P 32 2 1	Depositor
Cell constants a, b, c, α , β , γ	118.69 Å 118.69 Å 73.01 Å 90.00° 90.00° 120.00°	Depositor
Resolution (Å)	24.35 – 1.80 24.34 – 1.80	Depositor EDS
% Data completeness (in resolution range)	99.9 (24.35-1.80) 99.9 (24.34-1.80)	Depositor EDS
R_{merge}	0.10	Depositor
R_{sym}	(Not available)	Depositor
$\langle I/\sigma(I) \rangle$ ¹	2.38 (at 1.80 Å)	Xtriage
Refinement program	REFMAC 5.8.0238	Depositor
R, R_{free}	0.166 , 0.204 0.168 , 0.205	Depositor DCC
R_{free} test set	2695 reflections (4.89%)	wwPDB-VP
Wilson B-factor (Å ²)	26.0	Xtriage
Anisotropy	0.058	Xtriage
Bulk solvent k_{sol} (e/Å ³), B_{sol} (Å ²)	0.35 , 43.9	EDS
L-test for twinning ²	$\langle L \rangle = 0.51$, $\langle L^2 \rangle = 0.34$	Xtriage
Estimated twinning fraction	0.020 for -h,-k,l	Xtriage
F_o, F_c correlation	0.97	EDS
Total number of atoms	4185	wwPDB-VP
Average B, all atoms (Å ²)	34.0	wwPDB-VP

Xtriage's analysis on translational NCS is as follows: *The largest off-origin peak in the Patterson function is 5.25% of the height of the origin peak. No significant pseudotranslation is detected.*

¹Intensities estimated from amplitudes.

²Theoretical values of $\langle |L| \rangle$, $\langle L^2 \rangle$ for acentric reflections are 0.5, 0.333 respectively for untwinned datasets, and 0.375, 0.2 for perfectly twinned datasets.

5 Model quality

5.1 Standard geometry

Bond lengths and bond angles in the following residue types are not validated in this section: NAP, A6O

The Z score for a bond length (or angle) is the number of standard deviations the observed value is removed from the expected value. A bond length (or angle) with $|Z| > 5$ is considered an outlier worth inspection. RMSZ is the root-mean-square of all Z scores of the bond lengths (or angles).

Mol	Chain	Bond lengths		Bond angles	
		RMSZ	$\# Z > 5$	RMSZ	$\# Z > 5$
1	A	0.43	0/1897	0.72	0/2570
1	B	0.43	0/1897	0.69	0/2570
All	All	0.43	0/3794	0.70	0/5140

There are no bond length outliers.

There are no bond angle outliers.

There are no chirality outliers.

There are no planarity outliers.

5.2 Too-close contacts

In the following table, the Non-H and H(model) columns list the number of non-hydrogen atoms and hydrogen atoms in the chain respectively. The H(added) column lists the number of hydrogen atoms added and optimized by MolProbity. The Clashes column lists the number of clashes within the asymmetric unit, whereas Symm-Clashes lists symmetry related clashes.

Mol	Chain	Non-H	H(model)	H(added)	Clashes	Symm-Clashes
1	A	1875	0	1912	7	0
1	B	1875	0	1912	27	0
2	A	48	0	25	6	0
2	B	48	0	25	5	0
3	A	23	0	0	4	0
4	A	172	0	0	0	0
4	B	144	0	0	2	0
All	All	4185	0	3874	36	0

The all-atom clashscore is defined as the number of clashes found per 1000 atoms (including hydrogen atoms). The all-atom clashscore for this structure is 5.

All (36) close contacts within the same asymmetric unit are listed below, sorted by their clash magnitude.

Atom-1	Atom-2	Interatomic distance (Å)	Clash overlap (Å)
1:B:1:MET:HE2	4:B:541:HOH:O	1.64	0.95
2:A:301:NAP:C4N	3:A:302:A6O:C05	2.49	0.90
1:B:13:GLY:HA2	2:B:301:NAP:H1B	1.62	0.79
1:B:40:ARG:O	1:B:44:GLU:HG2	1.88	0.72
1:B:18:ILE:HD13	1:B:220:LEU:CD2	2.21	0.70
2:A:301:NAP:H4N	3:A:302:A6O:C05	2.22	0.69
1:B:18:ILE:HD13	1:B:220:LEU:HD23	1.83	0.60
1:B:18:ILE:CD1	1:B:220:LEU:HD23	2.35	0.57
1:A:194:THR:OG1	1:A:197:GLU:HG3	2.05	0.56
1:B:18:ILE:CG1	1:B:220:LEU:HD23	2.36	0.56
1:B:18:ILE:CD1	1:B:220:LEU:CD2	2.84	0.55
1:B:189:GLU:C	1:B:191:ASN:H	2.10	0.54
1:B:18:ILE:HG12	1:B:220:LEU:HD23	1.89	0.53
1:B:187:SER:HB2	2:B:301:NAP:O3	2.09	0.52
1:B:12:THR:O	1:B:87:ASN:HB3	2.10	0.52
1:B:69:ARG:HD3	4:B:512:HOH:O	2.10	0.52
1:A:167:GLU:OE2	1:B:148:ASP:OD1	2.30	0.50
1:A:183:ILE:H	2:A:301:NAP:H72N	1.59	0.49
1:A:126:LEU:O	1:A:171:ARG:NH2	2.47	0.48
1:B:87:ASN:OD1	2:B:301:NAP:H4D	2.14	0.47
1:B:15:ASN:HB3	1:B:43:LEU:HD23	1.96	0.47
1:B:195:GLN:HG3	1:B:195:GLN:O	2.13	0.46
1:B:102:GLU:H	1:B:102:GLU:CD	2.19	0.45
1:B:180:PRO:HG3	1:B:220:LEU:HD21	1.98	0.45
1:B:123:LEU:N	1:B:124:PRO:CD	2.80	0.44
1:B:89:GLY:HA3	2:B:301:NAP:O3D	2.18	0.43
1:B:126:LEU:O	1:B:171:ARG:NH2	2.50	0.42
1:B:183:ILE:H	2:B:301:NAP:H72N	1.66	0.42
2:A:301:NAP:C5N	3:A:302:A6O:C05	2.96	0.42
1:B:42:GLU:N	1:B:42:GLU:OE2	2.52	0.42
1:A:148:ASP:HA	1:B:163:THR:HG21	2.02	0.42
1:B:204:LYS:HE3	1:B:204:LYS:HB3	1.82	0.42
2:A:301:NAP:C4N	3:A:302:A6O:C04	2.96	0.41
1:A:82:ASP:OD1	1:A:127:ARG:HD3	2.21	0.41
1:B:129:GLY:HA2	1:B:172:SER:O	2.19	0.41
1:A:87:ASN:ND2	2:A:301:NAP:H4D	2.35	0.41

There are no symmetry-related clashes.

5.3 Torsion angles

5.3.1 Protein backbone

In the following table, the Percentiles column shows the percent Ramachandran outliers of the chain as a percentile score with respect to all X-ray entries followed by that with respect to entries of similar resolution.

The Analysed column shows the number of residues for which the backbone conformation was analysed, and the total number of residues.

Mol	Chain	Analysed	Favoured	Allowed	Outliers	Percentiles	
1	A	247/249 (99%)	240 (97%)	7 (3%)	0	100	100
1	B	247/249 (99%)	237 (96%)	10 (4%)	0	100	100
All	All	494/498 (99%)	477 (97%)	17 (3%)	0	100	100

There are no Ramachandran outliers to report.

5.3.2 Protein sidechains

In the following table, the Percentiles column shows the percent sidechain outliers of the chain as a percentile score with respect to all X-ray entries followed by that with respect to entries of similar resolution.

The Analysed column shows the number of residues for which the sidechain conformation was analysed, and the total number of residues.

Mol	Chain	Analysed	Rotameric	Outliers	Percentiles	
1	A	194/194 (100%)	189 (97%)	5 (3%)	46	32
1	B	194/194 (100%)	189 (97%)	5 (3%)	46	32
All	All	388/388 (100%)	378 (97%)	10 (3%)	46	32

All (10) residues with a non-rotameric sidechain are listed below:

Mol	Chain	Res	Type
1	A	1	MET
1	A	97	GLU
1	A	148	ASP
1	A	158	ARG
1	A	220	LEU
1	B	52	ARG
1	B	148	ASP
1	B	158	ARG

Continued on next page...

Continued from previous page...

Mol	Chain	Res	Type
1	B	196	GLU
1	B	204	LYS

Some sidechains can be flipped to improve hydrogen bonding and reduce clashes. All (2) such sidechains are listed below:

Mol	Chain	Res	Type
1	B	93	GLN
1	B	191	ASN

5.3.3 RNA [i](#)

There are no RNA molecules in this entry.

5.4 Non-standard residues in protein, DNA, RNA chains [i](#)

There are no non-standard protein/DNA/RNA residues in this entry.

5.5 Carbohydrates [i](#)

There are no carbohydrates in this entry.

5.6 Ligand geometry [i](#)

3 ligands are modelled in this entry.

In the following table, the Counts columns list the number of bonds (or angles) for which Mogul statistics could be retrieved, the number of bonds (or angles) that are observed in the model and the number of bonds (or angles) that are defined in the Chemical Component Dictionary. The Link column lists molecule types, if any, to which the group is linked. The Z score for a bond length (or angle) is the number of standard deviations the observed value is removed from the expected value. A bond length (or angle) with $|Z| > 2$ is considered an outlier worth inspection. RMSZ is the root-mean-square of all Z scores of the bond lengths (or angles).

Mol	Type	Chain	Res	Link	Bond lengths			Bond angles		
					Counts	RMSZ	$\# Z > 2$	Counts	RMSZ	$\# Z > 2$
3	A6O	A	302	-	25,25,25	4.26	15 (60%)	28,36,36	1.50	7 (25%)
2	NAP	B	301	-	45,52,52	1.36	5 (11%)	56,80,80	1.24	7 (12%)
2	NAP	A	301	-	45,52,52	1.11	5 (11%)	56,80,80	1.43	8 (14%)

In the following table, the Chirals column lists the number of chiral outliers, the number of chiral centers analysed, the number of these observed in the model and the number defined in the Chemical Component Dictionary. Similar counts are reported in the Torsion and Rings columns. '-' means no outliers of that kind were identified.

Mol	Type	Chain	Res	Link	Chirals	Torsions	Rings
3	A6O	A	302	-	-	5/11/38/38	0/3/3/3
2	NAP	B	301	-	-	6/31/67/67	0/5/5/5
2	NAP	A	301	-	-	5/31/67/67	0/5/5/5

All (25) bond length outliers are listed below:

Mol	Chain	Res	Type	Atoms	Z	Observed(Å)	Ideal(Å)
3	A	302	A6O	C04-C05	-9.59	1.35	1.53
3	A	302	A6O	C21-C20	6.63	1.62	1.51
3	A	302	A6O	C10-C07	-6.60	1.45	1.55
3	A	302	A6O	C03-C02	-6.54	1.40	1.51
3	A	302	A6O	C13-C12	6.28	1.59	1.46
3	A	302	A6O	C04-C03	5.67	1.66	1.53
3	A	302	A6O	C08-C07	5.41	1.63	1.54
3	A	302	A6O	C07-C05	4.57	1.64	1.55
3	A	302	A6O	C07-C02	4.42	1.59	1.52
3	A	302	A6O	C11-C12	4.42	1.37	1.34
3	A	302	A6O	C10-C11	4.34	1.60	1.50
2	B	301	NAP	P2B-O2B	3.67	1.66	1.59
3	A	302	A6O	C14-C13	3.51	1.45	1.39
2	B	301	NAP	O4D-C1D	3.48	1.45	1.41
3	A	302	A6O	O01-C02	-3.34	1.16	1.21
3	A	302	A6O	C15-C14	3.22	1.44	1.38
2	B	301	NAP	C2A-N3A	3.07	1.37	1.32
2	B	301	NAP	C5A-C4A	2.89	1.48	1.40
2	A	301	NAP	C2A-N3A	2.84	1.36	1.32
2	A	301	NAP	C5A-C4A	2.25	1.46	1.40
2	B	301	NAP	C4A-N3A	2.24	1.38	1.35
2	A	301	NAP	P2B-O2B	2.21	1.63	1.59
2	A	301	NAP	C2N-N1N	2.17	1.37	1.35
3	A	302	A6O	C19-C16	2.16	1.42	1.38
2	A	301	NAP	C2N-C3N	2.13	1.42	1.39

All (22) bond angle outliers are listed below:

Mol	Chain	Res	Type	Atoms	Z	Observed(°)	Ideal(°)
2	A	301	NAP	N3A-C2A-N1A	-4.53	121.60	128.68
3	A	302	A6O	C03-C02-C07	-3.86	105.92	109.25

Continued on next page...

Continued from previous page...

Mol	Chain	Res	Type	Atoms	Z	Observed(°)	Ideal(°)
2	A	301	NAP	O4D-C1D-C2D	-3.11	102.38	106.93
2	B	301	NAP	N3A-C2A-N1A	-2.87	124.19	128.68
2	A	301	NAP	O3B-C3B-C4B	-2.82	102.88	111.05
3	A	302	A6O	C03-C04-C05	2.70	107.27	104.06
3	A	302	A6O	C23-C12-C11	-2.69	117.10	122.86
2	B	301	NAP	C6N-N1N-C2N	-2.63	119.57	121.97
2	B	301	NAP	N6A-C6A-N1A	2.61	123.99	118.57
2	A	301	NAP	O2B-P2B-O1X	-2.47	99.85	109.39
2	A	301	NAP	C2A-N1A-C6A	2.35	122.78	118.75
3	A	302	A6O	C19-C20-C13	2.35	122.39	119.24
2	B	301	NAP	O2D-C2D-C1D	2.34	119.50	110.85
2	A	301	NAP	O7N-C7N-C3N	2.34	122.43	119.63
2	B	301	NAP	O3X-P2B-O2X	2.30	116.41	107.64
2	A	301	NAP	O3X-P2B-O2X	2.29	116.39	107.64
2	A	301	NAP	C4A-C5A-N7A	-2.24	107.07	109.40
3	A	302	A6O	C23-C12-C13	2.23	117.52	114.92
2	B	301	NAP	O4D-C1D-C2D	-2.19	103.72	106.93
3	A	302	A6O	C14-C13-C20	-2.19	117.07	119.43
3	A	302	A6O	C09-C08-C07	-2.14	110.75	115.20
2	B	301	NAP	O7N-C7N-C3N	2.02	122.05	119.63

There are no chirality outliers.

All (16) torsion outliers are listed below:

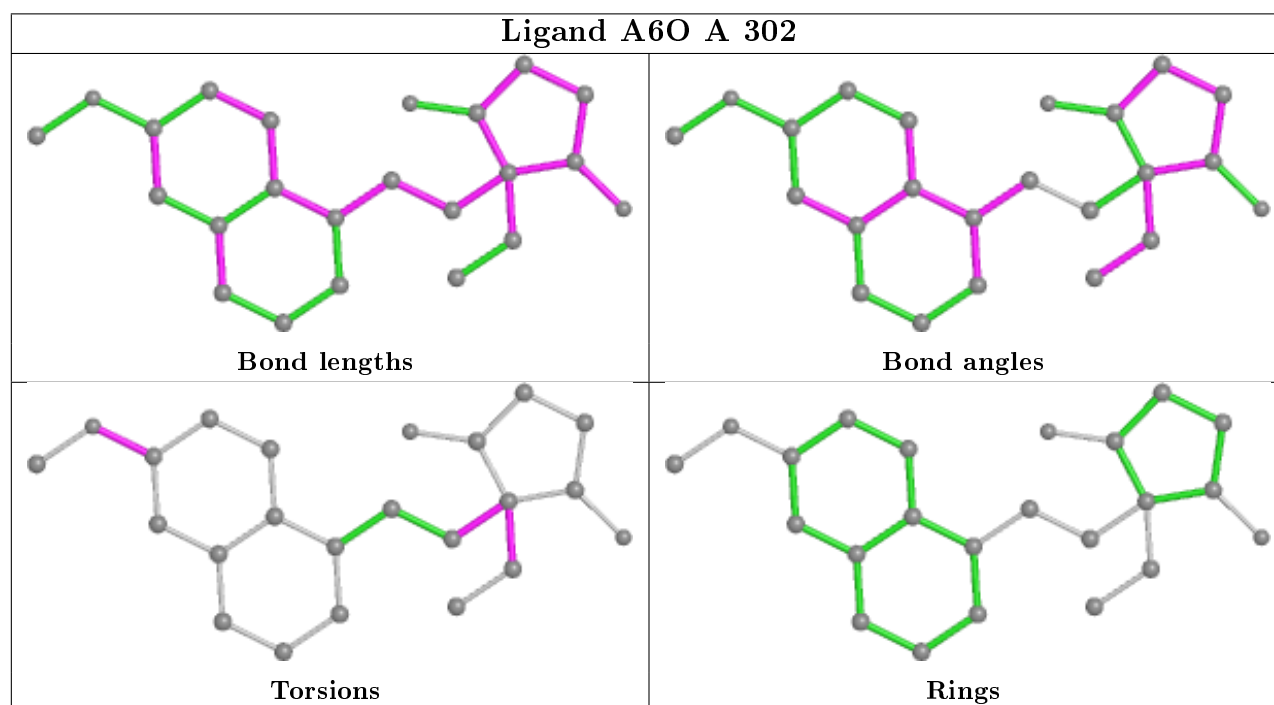
Mol	Chain	Res	Type	Atoms
3	A	302	A6O	C02-C07-C08-C09
3	A	302	A6O	C10-C07-C08-C09
3	A	302	A6O	C02-C07-C10-C11
2	B	301	NAP	C2B-O2B-P2B-O2X
2	B	301	NAP	C5D-O5D-PN-O3
2	A	301	NAP	PN-O3-PA-O5B
2	A	301	NAP	C2B-O2B-P2B-O2X
2	A	301	NAP	C5D-O5D-PN-O3
3	A	302	A6O	C15-C16-O17-C18
3	A	302	A6O	C19-C16-O17-C18
2	B	301	NAP	PN-O3-PA-O5B
2	B	301	NAP	C2B-O2B-P2B-O1X
2	B	301	NAP	C5D-O5D-PN-O1N
2	A	301	NAP	C5D-O5D-PN-O1N
2	B	301	NAP	O4B-C4B-C5B-O5B
2	A	301	NAP	O4B-C4B-C5B-O5B

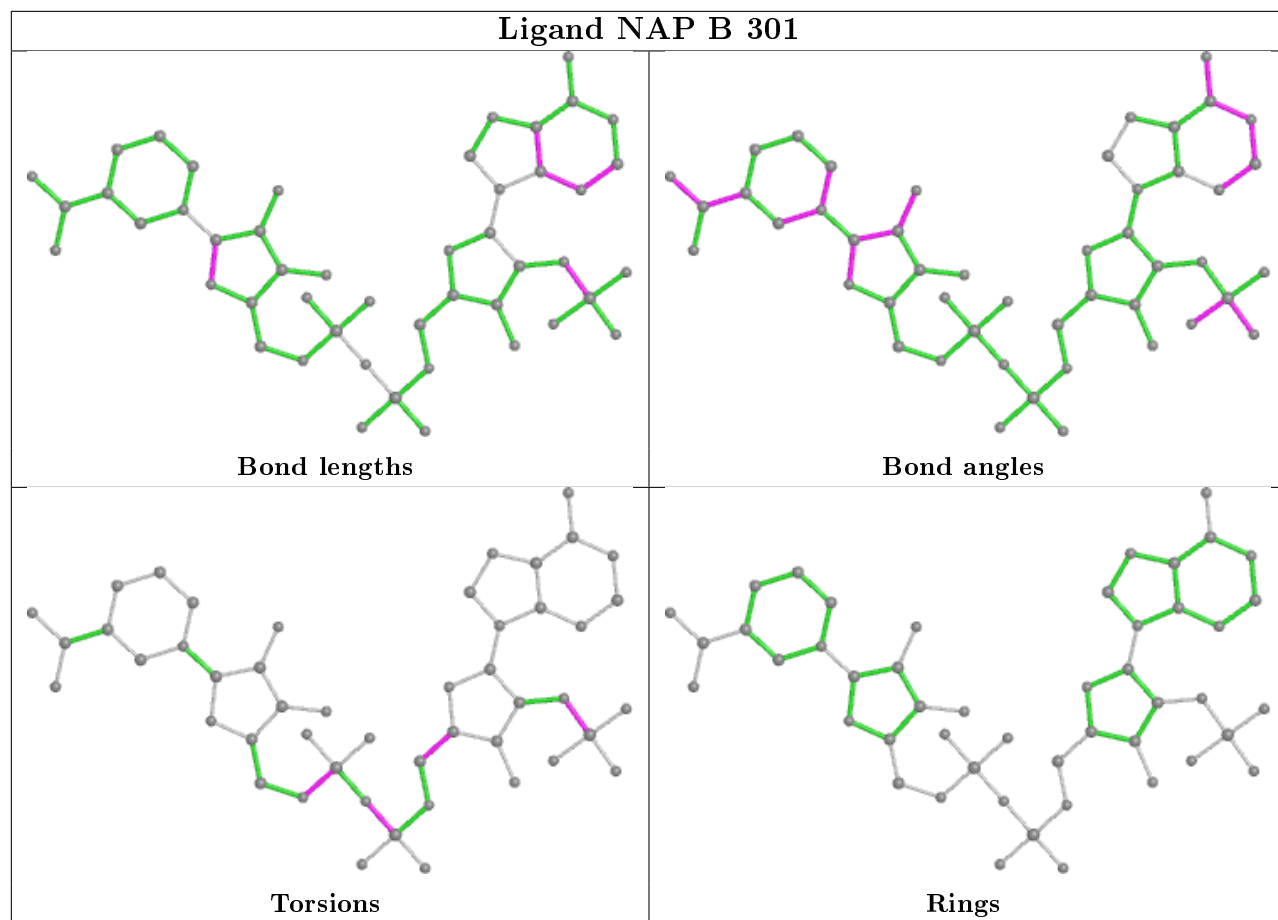
There are no ring outliers.

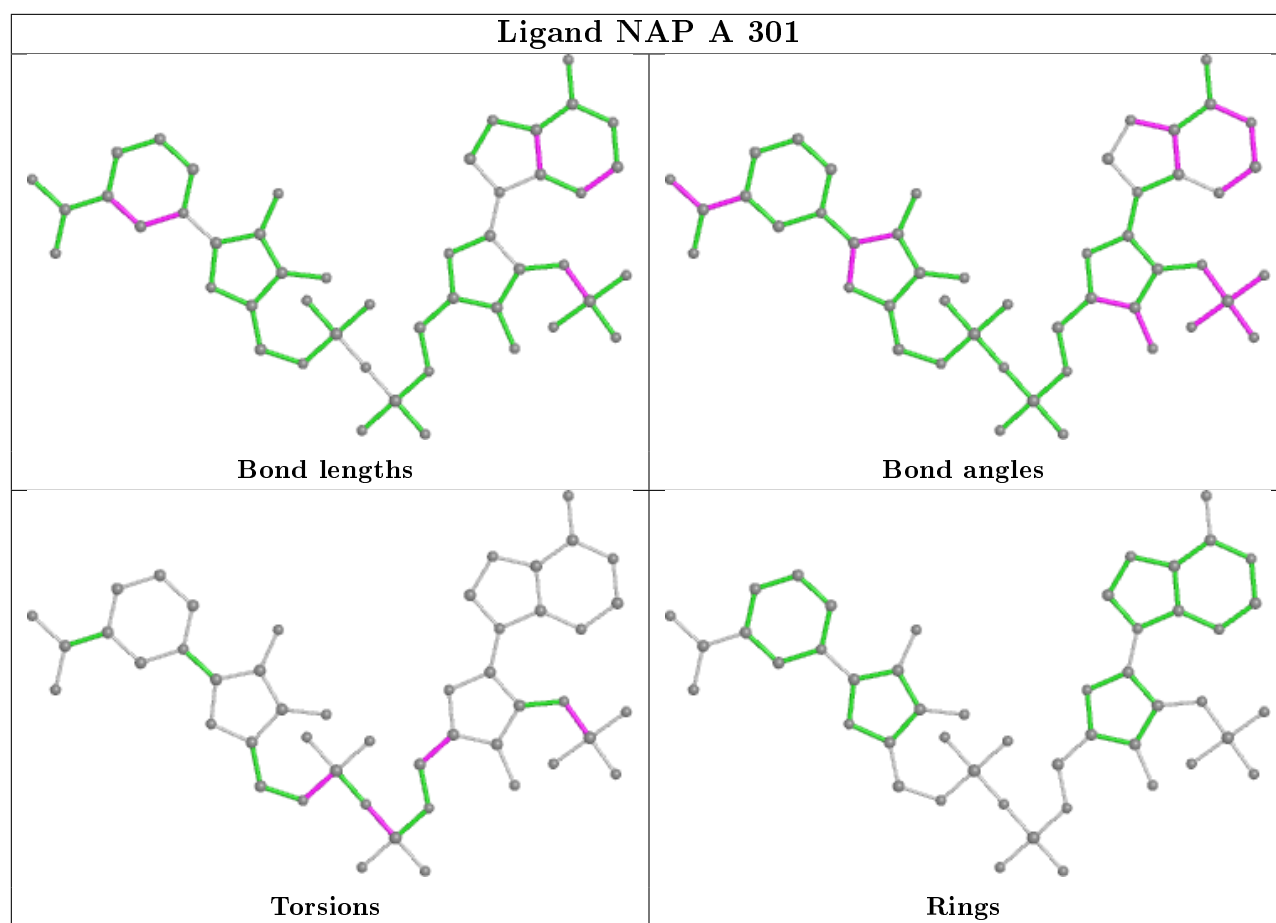
3 monomers are involved in 11 short contacts:

Mol	Chain	Res	Type	Clashes	Symm-Clashes
3	A	302	A6O	4	0
2	B	301	NAP	5	0
2	A	301	NAP	6	0

The following is a two-dimensional graphical depiction of Mogul quality analysis of bond lengths, bond angles, torsion angles, and ring geometry for all instances of the Ligand of Interest. In addition, ligands with molecular weight > 250 and outliers as shown on the validation Tables will also be included. For torsion angles, if less than 5% of the Mogul distribution of torsion angles is within 10 degrees of the torsion angle in question, then that torsion angle is considered an outlier. Any bond that is central to one or more torsion angles identified as an outlier by Mogul will be highlighted in the graph. For rings, the root-mean-square deviation (RMSD) between the ring in question and similar rings identified by Mogul is calculated over all ring torsion angles. If the average RMSD is greater than 60 degrees and the minimal RMSD between the ring in question and any Mogul-identified rings is also greater than 60 degrees, then that ring is considered an outlier. The outliers are highlighted in purple. The color gray indicates Mogul did not find sufficient equivalents in the CSD to analyse the geometry.







5.7 Other polymers [i](#)

There are no such residues in this entry.

5.8 Polymer linkage issues [i](#)

There are no chain breaks in this entry.

6 Fit of model and data

6.1 Protein, DNA and RNA chains

In the following table, the column labelled ‘#RSRZ> 2’ contains the number (and percentage) of RSRZ outliers, followed by percent RSRZ outliers for the chain as percentile scores relative to all X-ray entries and entries of similar resolution. The OWAB column contains the minimum, median, 95th percentile and maximum values of the occupancy-weighted average B-factor per residue. The column labelled ‘Q< 0.9’ lists the number of (and percentage) of residues with an average occupancy less than 0.9.

Mol	Chain	Analysed	<RSRZ>	#RSRZ>2	OWAB(Å ²)	Q<0.9
1	A	249/249 (100%)	-0.52	3 (1%) 79 76	19, 26, 47, 90	0
1	B	249/249 (100%)	-0.12	19 (7%) 13 10	20, 27, 88, 158	0
All	All	498/498 (100%)	-0.32	22 (4%) 34 28	19, 26, 63, 158	0

All (22) RSRZ outliers are listed below:

Mol	Chain	Res	Type	RSRZ
1	B	190	ASN	12.4
1	B	193	SER	8.5
1	B	194	THR	7.4
1	B	195	GLN	6.8
1	B	196	GLU	6.7
1	B	192	VAL	6.7
1	B	189	GLU	5.6
1	B	186	PRO	4.4
1	B	188	LEU	4.3
1	B	191	ASN	4.0
1	B	41	LYS	3.8
1	B	199	ASP	3.5
1	B	203	ALA	3.3
1	A	1	MET	3.3
1	B	197	GLU	3.2
1	B	202	ARG	3.0
1	A	192	VAL	3.0
1	B	187	SER	2.7
1	B	200	GLU	2.6
1	B	49	GLU	2.4
1	B	52	ARG	2.2
1	A	194	THR	2.1

6.2 Non-standard residues in protein, DNA, RNA chains [i](#)

There are no non-standard protein/DNA/RNA residues in this entry.

6.3 Carbohydrates [i](#)

There are no carbohydrates in this entry.

6.4 Ligands [i](#)

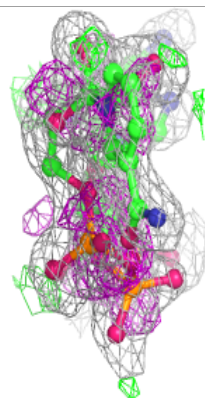
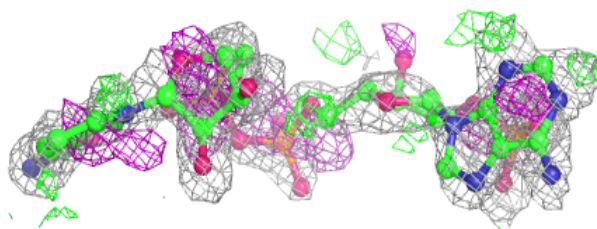
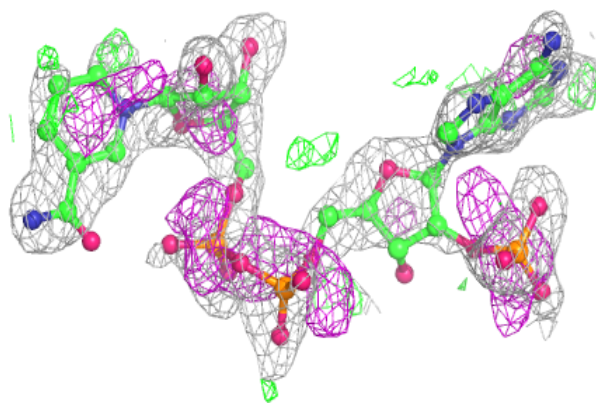
In the following table, the Atoms column lists the number of modelled atoms in the group and the number defined in the chemical component dictionary. The B-factors column lists the minimum, median, 95th percentile and maximum values of B factors of atoms in the group. The column labelled 'Q< 0.9' lists the number of atoms with occupancy less than 0.9.

Mol	Type	Chain	Res	Atoms	RSCC	RSR	B-factors(\AA^2)	Q<0.9
2	NAP	B	301	48/48	0.77	0.23	40,65,85,93	0
3	A6O	A	302	23/23	0.82	0.17	45,55,64,101	0
2	NAP	A	301	48/48	0.97	0.06	24,28,33,37	0

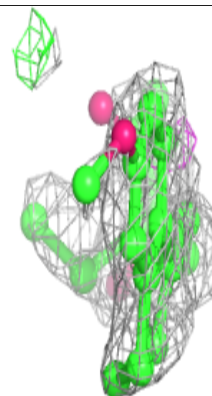
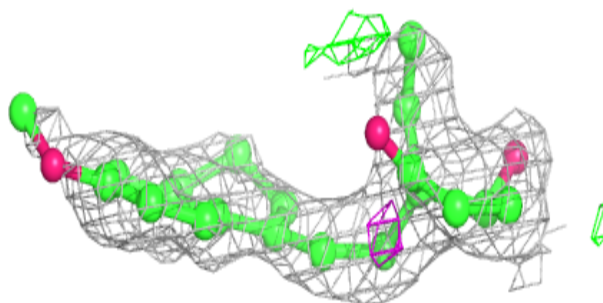
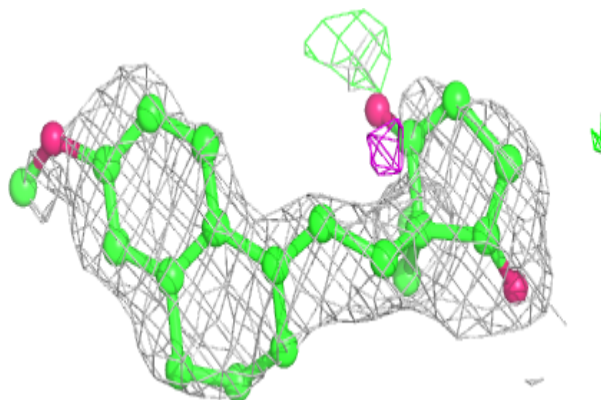
The following is a graphical depiction of the model fit to experimental electron density of all instances of the Ligand of Interest. In addition, ligands with molecular weight > 250 and outliers as shown on the geometry validation Tables will also be included. Each fit is shown from different orientation to approximate a three-dimensional view.

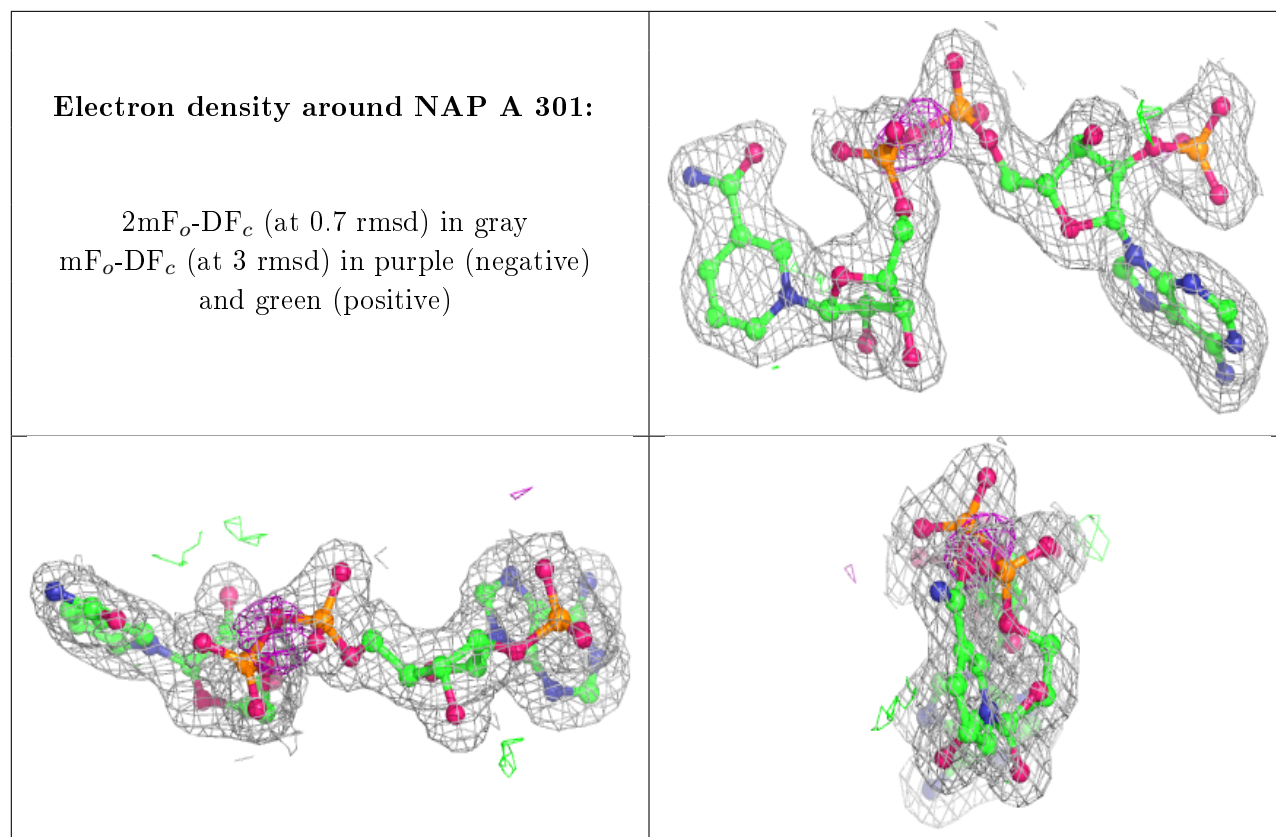
Electron density around NAP B 301:

$2mF_o-DF_c$ (at 0.7 rmsd) in gray
 mF_o-DF_c (at 3 rmsd) in purple (negative)
and green (positive)

**Electron density around A6O A 302:**

$2mF_o-DF_c$ (at 0.7 rmsd) in gray
 mF_o-DF_c (at 3 rmsd) in purple (negative)
and green (positive)





6.5 Other polymers [i](#)

There are no such residues in this entry.