



Full wwPDB X-ray Structure Validation Report ⓘ

May 22, 2020 – 12:15 am BST

PDB ID : 4IIX
Title : Structure of MccF in complex with glutamyl sulfamoyl guanosine
Authors : Agarwal, V.; Nair, S.K.
Deposited on : 2012-12-20
Resolution : 1.23 Å(reported)

This is a Full wwPDB X-ray Structure Validation Report for a publicly released PDB entry.

We welcome your comments at validation@mail.wwpdb.org

A user guide is available at

<https://www.wwpdb.org/validation/2017/XrayValidationReportHelp>

with specific help available everywhere you see the ⓘ symbol.

The following versions of software and data (see [references ⓘ](#)) were used in the production of this report:

MolProbity : 4.02b-467
Mogul : 1.8.5 (274361), CSD as541be (2020)
Xtriage (Phenix) : 1.13
EDS : 2.11
buster-report : 1.1.7 (2018)
Percentile statistics : 20191225.v01 (using entries in the PDB archive December 25th 2019)
Refmac : 5.8.0158
CCP4 : 7.0.044 (Gargrove)
Ideal geometry (proteins) : Engh & Huber (2001)
Ideal geometry (DNA, RNA) : Parkinson et al. (1996)
Validation Pipeline (wwPDB-VP) : 2.11

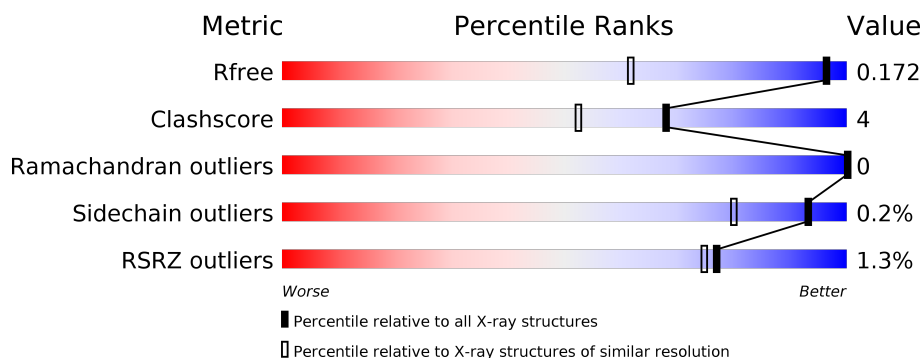
1 Overall quality at a glance

The following experimental techniques were used to determine the structure:

X-RAY DIFFRACTION

The reported resolution of this entry is 1.23 Å.

Percentile scores (ranging between 0-100) for global validation metrics of the entry are shown in the following graphic. The table shows the number of entries on which the scores are based.



Metric	Whole archive (#Entries)	Similar resolution (#Entries, resolution range(Å))
R_{free}	130704	1232 (1.24-1.20)
Clashscore	141614	1294 (1.24-1.20)
Ramachandran outliers	138981	1251 (1.24-1.20)
Sidechain outliers	138945	1250 (1.24-1.20)
RSRZ outliers	127900	1209 (1.24-1.20)

The table below summarises the geometric issues observed across the polymeric chains and their fit to the electron density. The red, orange, yellow and green segments on the lower bar indicate the fraction of residues that contain outliers for ≥ 3 , 2, 1 and 0 types of geometric quality criteria respectively. A grey segment represents the fraction of residues that are not modelled. The numeric value for each fraction is indicated below the corresponding segment, with a dot representing fractions $\leq 5\%$. The upper red bar (where present) indicates the fraction of residues that have poor fit to the electron density. The numeric value is given above the bar.

Mol	Chain	Length	Quality of chain
1	A	371	<div> <div> <div></div> <div>84%</div> <div>7%</div> <div>9%</div> </div> </div>
1	B	371	<div> <div> <div></div> <div>84%</div> <div>6%</div> <div>10%</div> </div> </div>

2 Entry composition [i](#)

There are 4 unique types of molecules in this entry. The entry contains 6022 atoms, of which 0 are hydrogens and 0 are deuteriums.

In the tables below, the ZeroOcc column contains the number of atoms modelled with zero occupancy, the AltConf column contains the number of residues with at least one atom in alternate conformation and the Trace column contains the number of residues modelled with at most 2 atoms.

- Molecule 1 is a protein called MccF.

Mol	Chain	Residues	Atoms					ZeroOcc	AltConf	Trace
1	A	338	Total	C	N	O	S	0	6	0
			2674	1728	442	495	9			
1	B	335	Total	C	N	O	S	0	6	0
			2661	1719	441	493	8			

There are 58 discrepancies between the modelled and reference sequences:

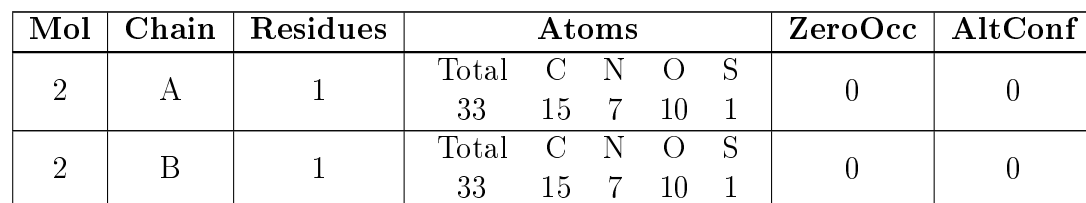
Chain	Residue	Modelled	Actual	Comment	Reference
A	-26	MET	-	EXPRESSION TAG	UNP Q2KKH9
A	-25	GLY	-	EXPRESSION TAG	UNP Q2KKH9
A	-24	HIS	-	EXPRESSION TAG	UNP Q2KKH9
A	-23	HIS	-	EXPRESSION TAG	UNP Q2KKH9
A	-22	HIS	-	EXPRESSION TAG	UNP Q2KKH9
A	-21	HIS	-	EXPRESSION TAG	UNP Q2KKH9
A	-20	HIS	-	EXPRESSION TAG	UNP Q2KKH9
A	-19	HIS	-	EXPRESSION TAG	UNP Q2KKH9
A	-18	HIS	-	EXPRESSION TAG	UNP Q2KKH9
A	-17	HIS	-	EXPRESSION TAG	UNP Q2KKH9
A	-16	HIS	-	EXPRESSION TAG	UNP Q2KKH9
A	-15	HIS	-	EXPRESSION TAG	UNP Q2KKH9
A	-14	HIS	-	EXPRESSION TAG	UNP Q2KKH9
A	-13	HIS	-	EXPRESSION TAG	UNP Q2KKH9
A	-12	SER	-	EXPRESSION TAG	UNP Q2KKH9
A	-11	SER	-	EXPRESSION TAG	UNP Q2KKH9
A	-10	GLY	-	EXPRESSION TAG	UNP Q2KKH9
A	-9	HIS	-	EXPRESSION TAG	UNP Q2KKH9
A	-8	ILE	-	EXPRESSION TAG	UNP Q2KKH9
A	-7	ASP	-	EXPRESSION TAG	UNP Q2KKH9
A	-6	ASP	-	EXPRESSION TAG	UNP Q2KKH9
A	-5	ASP	-	EXPRESSION TAG	UNP Q2KKH9
A	-4	ASP	-	EXPRESSION TAG	UNP Q2KKH9
A	-3	LYS	-	EXPRESSION TAG	UNP Q2KKH9
A	-2	HIS	-	EXPRESSION TAG	UNP Q2KKH9


Continued on next page...

Continued from previous page...

Chain	Residue	Modelled	Actual	Comment	Reference
A	-1	MET	-	EXPRESSION TAG	UNP Q2KKH9
A	0	LEU	-	EXPRESSION TAG	UNP Q2KKH9
A	1	GLU	-	EXPRESSION TAG	UNP Q2KKH9
A	118	ALA	SER	ENGINEERED MUTATION	UNP Q2KKH9
B	-26	MET	-	EXPRESSION TAG	UNP Q2KKH9
B	-25	GLY	-	EXPRESSION TAG	UNP Q2KKH9
B	-24	HIS	-	EXPRESSION TAG	UNP Q2KKH9
B	-23	HIS	-	EXPRESSION TAG	UNP Q2KKH9
B	-22	HIS	-	EXPRESSION TAG	UNP Q2KKH9
B	-21	HIS	-	EXPRESSION TAG	UNP Q2KKH9
B	-20	HIS	-	EXPRESSION TAG	UNP Q2KKH9
B	-19	HIS	-	EXPRESSION TAG	UNP Q2KKH9
B	-18	HIS	-	EXPRESSION TAG	UNP Q2KKH9
B	-17	HIS	-	EXPRESSION TAG	UNP Q2KKH9
B	-16	HIS	-	EXPRESSION TAG	UNP Q2KKH9
B	-15	HIS	-	EXPRESSION TAG	UNP Q2KKH9
B	-14	HIS	-	EXPRESSION TAG	UNP Q2KKH9
B	-13	HIS	-	EXPRESSION TAG	UNP Q2KKH9
B	-12	SER	-	EXPRESSION TAG	UNP Q2KKH9
B	-11	SER	-	EXPRESSION TAG	UNP Q2KKH9
B	-10	GLY	-	EXPRESSION TAG	UNP Q2KKH9
B	-9	HIS	-	EXPRESSION TAG	UNP Q2KKH9
B	-8	ILE	-	EXPRESSION TAG	UNP Q2KKH9
B	-7	ASP	-	EXPRESSION TAG	UNP Q2KKH9
B	-6	ASP	-	EXPRESSION TAG	UNP Q2KKH9
B	-5	ASP	-	EXPRESSION TAG	UNP Q2KKH9
B	-4	ASP	-	EXPRESSION TAG	UNP Q2KKH9
B	-3	LYS	-	EXPRESSION TAG	UNP Q2KKH9
B	-2	HIS	-	EXPRESSION TAG	UNP Q2KKH9
B	-1	MET	-	EXPRESSION TAG	UNP Q2KKH9
B	0	LEU	-	EXPRESSION TAG	UNP Q2KKH9
B	1	GLU	-	EXPRESSION TAG	UNP Q2KKH9
B	118	ALA	SER	ENGINEERED MUTATION	UNP Q2KKH9

- Molecule 2 is 5'-O-(L-alpha-glutamylsulfamoyl)guanosine (three-letter code: 1EG) (formula: C₁₅H₂₁N₇O₁₀S).



- 
- EDO
- Chemical structure of EDO (Ethane-1,2-diol) showing the zigzag conformation. The structure consists of two carbon atoms, C1 and C2, connected by a single bond. Each carbon is bonded to a hydroxyl group (OH). The oxygen atoms are labeled O1 and O2. The hydroxyl groups are shown in red, and the carbon atoms are labeled in green.

Mol	Chain	Residues	Atoms	ZeroOcc	AltConf
3	A	1	Total C O 4 2 2	0	0
3	A	1	Total C O 4 2 2	0	0



Continued from previous page...

Mol	Chain	Residues	Atoms			ZeroOcc	AltConf
3	A	1	Total 4	C 2	O 2	0	0
3	A	1	Total 4	C 2	O 2	0	0
3	B	1	Total 4	C 2	O 2	0	0
3	B	1	Total 4	C 2	O 2	0	0
3	B	1	Total 4	C 2	O 2	0	0
3	B	1	Total 4	C 2	O 2	0	0

- Molecule 4 is water.

Mol	Chain	Residues	Atoms		ZeroOcc	AltConf
4	A	311	Total 311	O 311	0	0
4	B	278	Total 278	O 278	0	0

- Molecule 1: MccF



4 Data and refinement statistics

Property	Value	Source
Space group	P 1 21 1	Depositor
Cell constants a, b, c, α , β , γ	54.44Å 85.73Å 72.98Å 90.00° 101.24° 90.00°	Depositor
Resolution (Å)	32.84 – 1.23 32.84 – 1.23	Depositor EDS
% Data completeness (in resolution range)	99.9 (32.84-1.23) 99.9 (32.84-1.23)	Depositor EDS
R_{merge}	0.07	Depositor
R_{sym}	0.09	Depositor
$\langle I/\sigma(I) \rangle$ ¹	3.19 (at 1.23Å)	Xtriage
Refinement program	PHENIX 1.7.1_743, REFMAC	Depositor
R, R_{free}	0.162 , 0.175 0.158 , 0.172	Depositor DCC
R_{free} test set	9551 reflections (5.02%)	wwPDB-VP
Wilson B-factor (Å ²)	8.2	Xtriage
Anisotropy	0.014	Xtriage
Bulk solvent k_{sol} (e/Å ³), B_{sol} (Å ²)	0.39 , 43.7	EDS
L-test for twinning ²	$\langle L \rangle = 0.50$, $\langle L^2 \rangle = 0.33$	Xtriage
Estimated twinning fraction	No twinning to report.	Xtriage
F_o, F_c correlation	0.97	EDS
Total number of atoms	6022	wwPDB-VP
Average B, all atoms (Å ²)	10.0	wwPDB-VP

Xtriage's analysis on translational NCS is as follows: *The largest off-origin peak in the Patterson function is 10.93% of the height of the origin peak. No significant pseudotranslation is detected.*

¹Intensities estimated from amplitudes.

²Theoretical values of $\langle |L| \rangle$, $\langle L^2 \rangle$ for acentric reflections are 0.5, 0.333 respectively for untwinned datasets, and 0.375, 0.2 for perfectly twinned datasets.

5 Model quality

5.1 Standard geometry

Bond lengths and bond angles in the following residue types are not validated in this section: EDO, 1EG

The Z score for a bond length (or angle) is the number of standard deviations the observed value is removed from the expected value. A bond length (or angle) with $|Z| > 5$ is considered an outlier worth inspection. RMSZ is the root-mean-square of all Z scores of the bond lengths (or angles).

Mol	Chain	Bond lengths		Bond angles	
		RMSZ	$\# Z > 5$	RMSZ	$\# Z > 5$
1	A	0.32	0/2752	0.55	0/3725
1	B	0.31	0/2739	0.53	0/3708
All	All	0.31	0/5491	0.54	0/7433

There are no bond length outliers.

There are no bond angle outliers.

There are no chirality outliers.

There are no planarity outliers.

5.2 Too-close contacts

In the following table, the Non-H and H(model) columns list the number of non-hydrogen atoms and hydrogen atoms in the chain respectively. The H(added) column lists the number of hydrogen atoms added and optimized by MolProbity. The Clashes column lists the number of clashes within the asymmetric unit, whereas Symm-Clashes lists symmetry related clashes.

Mol	Chain	Non-H	H(model)	H(added)	Clashes	Symm-Clashes
1	A	2674	0	2719	19	0
1	B	2661	0	2703	21	0
2	A	33	0	20	2	0
2	B	33	0	20	3	0
3	A	16	0	24	0	0
3	B	16	0	24	2	0
4	A	311	0	0	7	1
4	B	278	0	0	12	1
All	All	6022	0	5510	41	1

The all-atom clashscore is defined as the number of clashes found per 1000 atoms (including hydrogen atoms). The all-atom clashscore for this structure is 4.

All (41) close contacts within the same asymmetric unit are listed below, sorted by their clash magnitude.

Atom-1	Atom-2	Interatomic distance (Å)	Clash overlap (Å)
1:B:202:CYS:HB2	4:B:776:HOH:O	1.31	1.30
1:B:157[B]:GLU:OE2	4:B:706:HOH:O	1.76	1.04
1:B:202:CYS:SG	4:B:776:HOH:O	2.36	0.83
1:B:202:CYS:CB	4:B:776:HOH:O	2.02	0.79
1:B:248[B]:SER:OG	4:B:726:HOH:O	2.03	0.77
1:A:84:THR:HG23	4:A:553:HOH:O	1.91	0.71
1:B:174:THR:HG23	4:B:773:HOH:O	1.91	0.70
1:B:294:GLU:HA	3:B:402:EDO:H11	1.78	0.65
1:A:311:HIS:HD2	2:A:401:1EG:O3'	1.84	0.61
1:B:33:LYS:HE2	1:B:37:PHE:CZ	2.36	0.61
1:B:118:ALA:HB1	2:B:401:1EG:C	2.30	0.61
1:A:287:ARG:HD2	4:A:712:HOH:O	2.01	0.59
1:B:191:ILE:HD11	4:B:771:HOH:O	2.03	0.57
1:A:33:LYS:HE2	1:A:37:PHE:CZ	2.42	0.54
1:A:40:VAL:HG13	1:A:50:LEU:HD12	1.88	0.54
1:B:40:VAL:HG13	1:B:50:LEU:HD12	1.91	0.53
1:A:7:PRO:N	4:A:810:HOH:O	2.43	0.51
1:B:38[B]:ARG:NH1	4:B:713:HOH:O	2.43	0.51
1:A:215:ILE:HB	4:A:807:HOH:O	2.09	0.51
1:A:118:ALA:HB1	2:A:401:1EG:C	2.42	0.50
1:A:54:LYS:HD3	1:A:76:GLU:OE1	2.11	0.50
1:B:38[B]:ARG:NH2	4:B:713:HOH:O	2.43	0.49
2:B:401:1EG:OE1	2:B:401:1EG:N	2.43	0.49
1:A:215:ILE:HD11	1:A:232:PRO:HB2	1.96	0.48
1:B:297:ASP:HA	3:B:402:EDO:H21	1.97	0.47
1:B:302:PRO:HB2	1:B:328:PHE:CZ	2.49	0.47
1:A:302:PRO:HB2	1:A:328:PHE:CZ	2.50	0.46
1:B:215:ILE:HB	4:B:639:HOH:O	2.16	0.46
1:B:95[B]:SER:OG	4:B:585:HOH:O	2.20	0.46
1:A:45:ARG:HD2	4:A:745:HOH:O	2.15	0.45
1:A:130:LYS:NZ	1:A:229:GLU:OE2	2.35	0.44
1:A:290[B]:GLU:HG3	4:A:802:HOH:O	2.17	0.44
1:A:245:SER:HB2	1:A:311:HIS:CG	2.53	0.43
1:B:117:TYR:HB2	1:B:137:TYR:CZ	2.54	0.43
1:A:41:GLU:HG2	4:A:745:HOH:O	2.18	0.43
1:B:191:ILE:HG13	1:B:191:ILE:O	2.18	0.42
1:A:215:ILE:HD13	1:A:234:ILE:HG12	2.02	0.42
1:A:257:SER:O	1:A:261:LEU:HG	2.20	0.41
1:B:311:HIS:HD2	2:B:401:1EG:O3'	2.03	0.41
1:A:304:LEU:C	1:A:304:LEU:HD23	2.42	0.40

Continued on next page...

Continued from previous page...

Atom-1	Atom-2	Interatomic distance (Å)	Clash overlap (Å)
1:B:7:PRO:N	4:B:774:HOH:O	2.55	0.40

All (1) symmetry-related close contacts are listed below. The label for Atom-2 includes the symmetry operator and encoded unit-cell translations to be applied.

Atom-1	Atom-2	Interatomic distance (Å)	Clash overlap (Å)
4:A:806:HOH:O	4:B:690:HOH:O[1_454]	2.07	0.13

5.3 Torsion angles [i](#)

5.3.1 Protein backbone [i](#)

In the following table, the Percentiles column shows the percent Ramachandran outliers of the chain as a percentile score with respect to all X-ray entries followed by that with respect to entries of similar resolution.

The Analysed column shows the number of residues for which the backbone conformation was analysed, and the total number of residues.

Mol	Chain	Analysed	Favoured	Allowed	Outliers	Percentiles	
1	A	342/371 (92%)	332 (97%)	10 (3%)	0	100	100
1	B	339/371 (91%)	327 (96%)	12 (4%)	0	100	100
All	All	681/742 (92%)	659 (97%)	22 (3%)	0	100	100

There are no Ramachandran outliers to report.

5.3.2 Protein sidechains [i](#)

In the following table, the Percentiles column shows the percent sidechain outliers of the chain as a percentile score with respect to all X-ray entries followed by that with respect to entries of similar resolution.

The Analysed column shows the number of residues for which the sidechain conformation was analysed, and the total number of residues.

Mol	Chain	Analysed	Rotameric	Outliers	Percentiles	
1	A	295/322 (92%)	295 (100%)	0	100	100
1	B	293/322 (91%)	292 (100%)	1 (0%)	92	79

Continued on next page...

Continued from previous page...

Mol	Chain	Analysed	Rotameric	Outliers	Percentiles	
All	All	588/644 (91%)	587 (100%)	1 (0%)	93	80

All (1) residues with a non-rotameric sidechain are listed below:

Mol	Chain	Res	Type
1	B	190	LYS

Some sidechains can be flipped to improve hydrogen bonding and reduce clashes. All (2) such sidechains are listed below:

Mol	Chain	Res	Type
1	A	311	HIS
1	B	311	HIS

5.3.3 RNA ⓘ

There are no RNA molecules in this entry.

5.4 Non-standard residues in protein, DNA, RNA chains ⓘ

There are no non-standard protein/DNA/RNA residues in this entry.

5.5 Carbohydrates ⓘ

There are no carbohydrates in this entry.

5.6 Ligand geometry ⓘ

10 ligands are modelled in this entry.

In the following table, the Counts columns list the number of bonds (or angles) for which Mogul statistics could be retrieved, the number of bonds (or angles) that are observed in the model and the number of bonds (or angles) that are defined in the Chemical Component Dictionary. The Link column lists molecule types, if any, to which the group is linked. The Z score for a bond length (or angle) is the number of standard deviations the observed value is removed from the expected value. A bond length (or angle) with $|Z| > 2$ is considered an outlier worth inspection. RMSZ is the root-mean-square of all Z scores of the bond lengths (or angles).

Mol	Type	Chain	Res	Link	Bond lengths			Bond angles		
					Counts	RMSZ	# Z > 2	Counts	RMSZ	# Z > 2
3	EDO	A	402	-	3,3,3	0.47	0	2,2,2	0.30	0
3	EDO	B	402	-	3,3,3	0.47	0	2,2,2	0.24	0
3	EDO	A	403	-	3,3,3	0.46	0	2,2,2	0.27	0
3	EDO	B	405	-	3,3,3	0.47	0	2,2,2	0.31	0
2	1EG	A	401	-	28,35,35	1.47	6 (21%)	33,52,52	2.04	9 (27%)
3	EDO	B	404	-	3,3,3	0.44	0	2,2,2	0.26	0
3	EDO	A	404	-	3,3,3	0.46	0	2,2,2	0.35	0
3	EDO	A	405	-	3,3,3	0.40	0	2,2,2	0.39	0
3	EDO	B	403	-	3,3,3	0.50	0	2,2,2	0.17	0
2	1EG	B	401	-	28,35,35	1.57	6 (21%)	33,52,52	2.31	11 (33%)

In the following table, the Chirals column lists the number of chiral outliers, the number of chiral centers analysed, the number of these observed in the model and the number defined in the Chemical Component Dictionary. Similar counts are reported in the Torsion and Rings columns. '-' means no outliers of that kind were identified.

Mol	Type	Chain	Res	Link	Chirals	Torsions	Rings
3	EDO	A	402	-	-	0/1/1/1	-
3	EDO	B	402	-	-	0/1/1/1	-
3	EDO	A	403	-	-	0/1/1/1	-
3	EDO	B	405	-	-	0/1/1/1	-
2	1EG	A	401	-	-	3/17/40/40	0/3/3/3
3	EDO	B	404	-	-	0/1/1/1	-
3	EDO	A	404	-	-	0/1/1/1	-
3	EDO	A	405	-	-	0/1/1/1	-
3	EDO	B	403	-	-	0/1/1/1	-
2	1EG	B	401	-	-	6/17/40/40	0/3/3/3

All (12) bond length outliers are listed below:

Mol	Chain	Res	Type	Atoms	Z	Observed(Å)	Ideal(Å)
2	B	401	1EG	C6-C5	4.23	1.48	1.41
2	A	401	1EG	C6-C5	3.89	1.48	1.41
2	B	401	1EG	OAG-SBG	3.72	1.45	1.42
2	B	401	1EG	O5'-SBG	-3.10	1.53	1.59
2	A	401	1EG	OAF-SBG	3.04	1.45	1.42
2	A	401	1EG	O5'-SBG	-2.77	1.53	1.59
2	A	401	1EG	SBG-NAQ	-2.75	1.55	1.59
2	B	401	1EG	OAF-SBG	2.64	1.44	1.42
2	B	401	1EG	SBG-NAQ	-2.60	1.55	1.59
2	A	401	1EG	C5-C4	2.44	1.47	1.40

Continued on next page...

Continued from previous page...

Mol	Chain	Res	Type	Atoms	Z	Observed(Å)	Ideal(Å)
2	B	401	1EG	C5-C4	2.28	1.47	1.40
2	A	401	1EG	OAG-SBG	2.28	1.44	1.42

All (20) bond angle outliers are listed below:

Mol	Chain	Res	Type	Atoms	Z	Observed(°)	Ideal(°)
2	B	401	1EG	OAG-SBG-OAF	-5.97	111.46	120.76
2	B	401	1EG	C2-N3-C4	4.83	120.87	115.36
2	B	401	1EG	C6-C5-C4	-4.72	116.29	120.80
2	A	401	1EG	C5-C6-N1	-4.41	117.39	123.43
2	A	401	1EG	C6-N1-C2	4.39	122.91	115.93
2	A	401	1EG	C6-C5-C4	-4.30	116.69	120.80
2	A	401	1EG	OAG-SBG-OAF	-4.30	114.06	120.76
2	B	401	1EG	C6-N1-C2	4.22	122.63	115.93
2	B	401	1EG	C5-C6-N1	-3.84	118.18	123.43
2	B	401	1EG	N3-C2-N1	-3.59	122.44	127.22
2	A	401	1EG	C2-N3-C4	3.51	119.37	115.36
2	A	401	1EG	N3-C2-N1	-3.00	123.22	127.22
2	B	401	1EG	C4-C5-N7	-2.90	106.38	109.40
2	B	401	1EG	O-C-NAQ	2.50	127.81	123.00
2	A	401	1EG	C3'-C2'-C1'	2.15	104.22	100.98
2	A	401	1EG	O5'-C5'-C4'	2.13	111.60	107.62
2	B	401	1EG	C1'-N9-C4	-2.13	122.89	126.64
2	A	401	1EG	C4-C5-N7	-2.12	107.19	109.40
2	B	401	1EG	C3'-C2'-C1'	2.02	104.03	100.98
2	B	401	1EG	O-C-CA	-2.01	115.93	120.18

There are no chirality outliers.

All (9) torsion outliers are listed below:

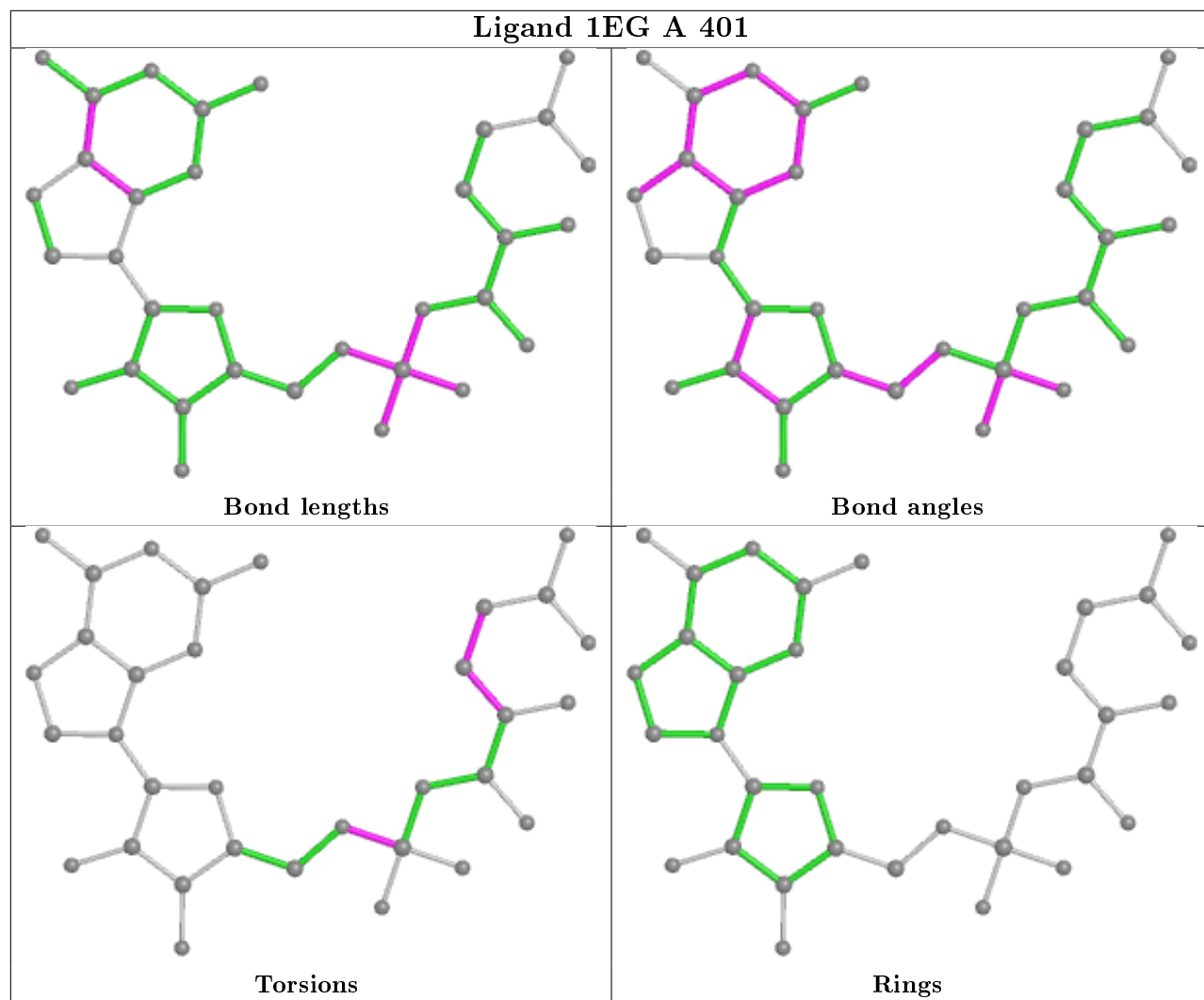
Mol	Chain	Res	Type	Atoms
2	A	401	1EG	C-CA-CB-CG
2	B	401	1EG	C5'-O5'-SBG-OAF
2	B	401	1EG	C5'-O5'-SBG-NAQ
2	A	401	1EG	CA-CB-CG-CD
2	B	401	1EG	NAQ-C-CA-CB
2	B	401	1EG	O-C-CA-CB
2	B	401	1EG	CA-CB-CG-CD
2	A	401	1EG	C5'-O5'-SBG-OAG
2	B	401	1EG	C5'-O5'-SBG-OAG

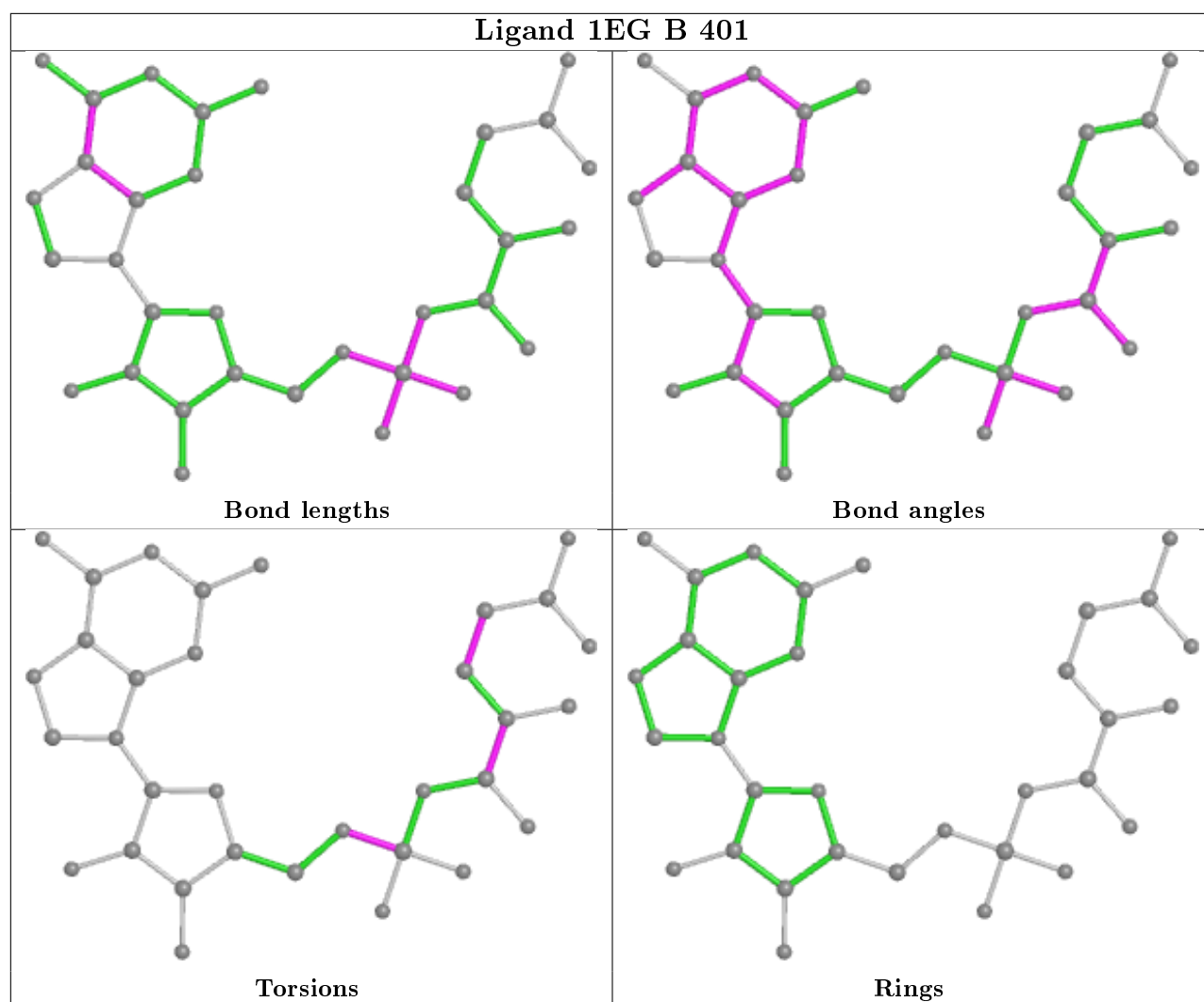
There are no ring outliers.

3 monomers are involved in 7 short contacts:

Mol	Chain	Res	Type	Clashes	Symm-Clashes
3	B	402	EDO	2	0
2	A	401	1EG	2	0
2	B	401	1EG	3	0

The following is a two-dimensional graphical depiction of Mogul quality analysis of bond lengths, bond angles, torsion angles, and ring geometry for all instances of the Ligand of Interest. In addition, ligands with molecular weight > 250 and outliers as shown on the validation Tables will also be included. For torsion angles, if less than 5% of the Mogul distribution of torsion angles is within 10 degrees of the torsion angle in question, then that torsion angle is considered an outlier. Any bond that is central to one or more torsion angles identified as an outlier by Mogul will be highlighted in the graph. For rings, the root-mean-square deviation (RMSD) between the ring in question and similar rings identified by Mogul is calculated over all ring torsion angles. If the average RMSD is greater than 60 degrees and the minimal RMSD between the ring in question and any Mogul-identified rings is also greater than 60 degrees, then that ring is considered an outlier. The outliers are highlighted in purple. The color gray indicates Mogul did not find sufficient equivalents in the CSD to analyse the geometry.





5.7 Other polymers [i](#)

There are no such residues in this entry.

5.8 Polymer linkage issues [i](#)

There are no chain breaks in this entry.

6 Fit of model and data [i](#)

6.1 Protein, DNA and RNA chains [i](#)

In the following table, the column labelled ‘#RSRZ> 2’ contains the number (and percentage) of RSRZ outliers, followed by percent RSRZ outliers for the chain as percentile scores relative to all X-ray entries and entries of similar resolution. The OWAB column contains the minimum, median, 95th percentile and maximum values of the occupancy-weighted average B-factor per residue. The column labelled ‘Q< 0.9’ lists the number of (and percentage) of residues with an average occupancy less than 0.9.

Mol	Chain	Analysed	<RSRZ>	#RSRZ>2	OWAB(Å ²)	Q<0.9
1	A	338/371 (91%)	-0.20	3 (0%) 84 82	4, 8, 18, 26	0
1	B	335/371 (90%)	-0.12	6 (1%) 68 66	5, 8, 20, 51	0
All	All	673/742 (90%)	-0.16	9 (1%) 77 75	4, 8, 19, 51	0

All (9) RSRZ outliers are listed below:

Mol	Chain	Res	Type	RSRZ
1	B	192	LEU	9.6
1	B	191	ILE	7.0
1	B	175	LEU	3.8
1	A	342	THR	3.2
1	B	190	LYS	2.7
1	B	189	ASN	2.5
1	B	168	SER	2.3
1	A	169	GLY	2.1
1	A	168	SER	2.1

6.2 Non-standard residues in protein, DNA, RNA chains [i](#)

There are no non-standard protein/DNA/RNA residues in this entry.

6.3 Carbohydrates [i](#)

There are no carbohydrates in this entry.

6.4 Ligands [i](#)

In the following table, the Atoms column lists the number of modelled atoms in the group and the number defined in the chemical component dictionary. The B-factors column lists the minimum,

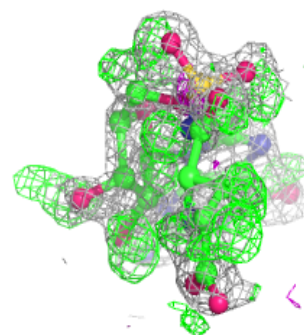
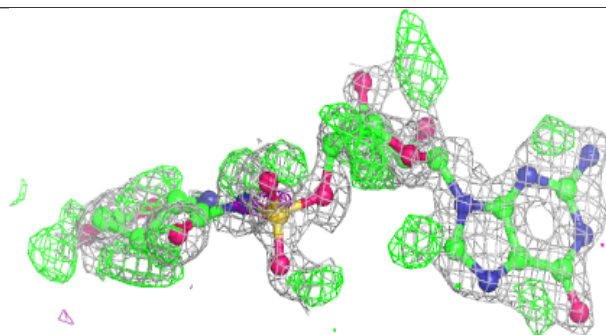
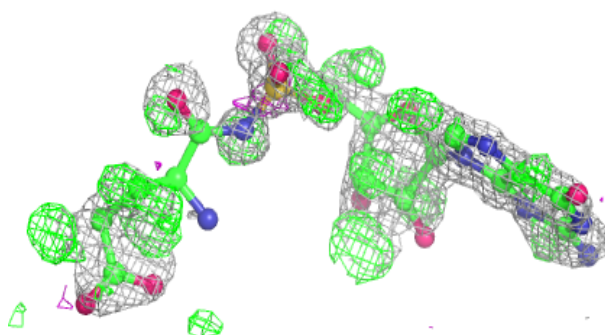
median, 95th percentile and maximum values of B factors of atoms in the group. The column labelled 'Q< 0.9' lists the number of atoms with occupancy less than 0.9.

Mol	Type	Chain	Res	Atoms	RSCC	RSR	B-factors(Å ²)	Q<0.9
3	EDO	A	405	4/4	0.78	0.22	20,23,26,27	0
2	1EG	B	401	33/33	0.84	0.20	3,15,20,21	33
3	EDO	A	403	4/4	0.85	0.20	16,19,26,31	0
3	EDO	B	402	4/4	0.86	0.17	24,25,26,30	0
3	EDO	B	404	4/4	0.86	0.14	16,19,25,25	0
3	EDO	A	404	4/4	0.92	0.11	12,15,15,16	0
2	1EG	A	401	33/33	0.93	0.11	4,14,20,26	26
3	EDO	B	405	4/4	0.94	0.13	11,16,17,18	0
3	EDO	B	403	4/4	0.96	0.07	7,8,9,11	0
3	EDO	A	402	4/4	0.97	0.06	6,7,9,11	0

The following is a graphical depiction of the model fit to experimental electron density of all instances of the Ligand of Interest. In addition, ligands with molecular weight > 250 and outliers as shown on the geometry validation Tables will also be included. Each fit is shown from different orientation to approximate a three-dimensional view.

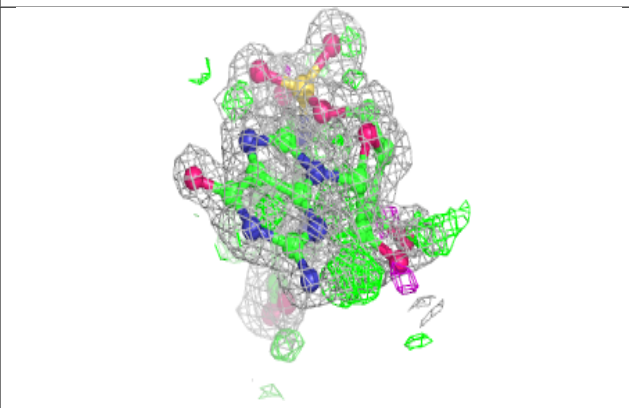
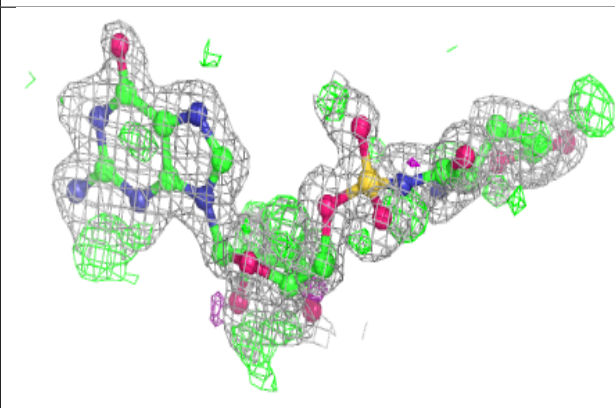
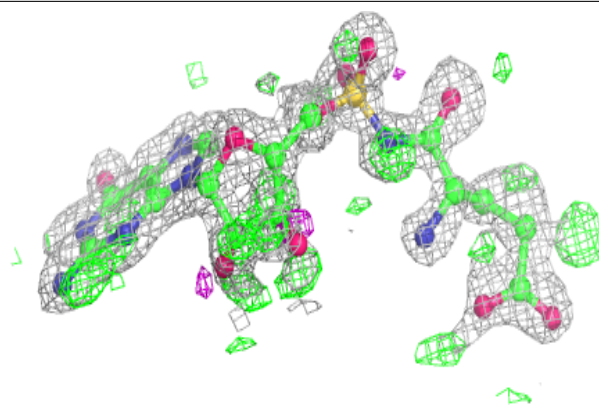
Electron density around 1EG B 401:

2mF_o-DF_c (at 0.7 rmsd) in gray
mF_o-DF_c (at 3 rmsd) in purple (negative)
and green (positive)



Electron density around 1EG A 401:

$2mF_o-DF_c$ (at 0.7 rmsd) in gray
 mF_o-DF_c (at 3 rmsd) in purple (negative)
and green (positive)



6.5 Other polymers [i](#)

There are no such residues in this entry.