



# Full wwPDB X-ray Structure Validation Report ⓘ

May 22, 2020 – 06:00 pm BST

PDB ID : 5IK1  
Title : Open state of P450cam after soaking in camphor  
Authors : Mahomed, M.; Goodin, D.B.; Lee, Y.-T.  
Deposited on : 2016-03-03  
Resolution : 1.53 Å(reported)

This is a Full wwPDB X-ray Structure Validation Report for a publicly released PDB entry.

We welcome your comments at [validation@mail.wwpdb.org](mailto:validation@mail.wwpdb.org)

A user guide is available at

<https://www.wwpdb.org/validation/2017/XrayValidationReportHelp>

with specific help available everywhere you see the ⓘ symbol.

---

The following versions of software and data (see [references ⓘ](#)) were used in the production of this report:

MolProbity : 4.02b-467  
Mogul : 1.8.5 (274361), CSD as541be (2020)  
Xtriage (Phenix) : 1.13  
EDS : 2.11  
buster-report : 1.1.7 (2018)  
Percentile statistics : 20191225.v01 (using entries in the PDB archive December 25th 2019)  
Refmac : 5.8.0158  
CCP4 : 7.0.044 (Gargrove)  
Ideal geometry (proteins) : Engh & Huber (2001)  
Ideal geometry (DNA, RNA) : Parkinson et al. (1996)  
Validation Pipeline (wwPDB-VP) : 2.11

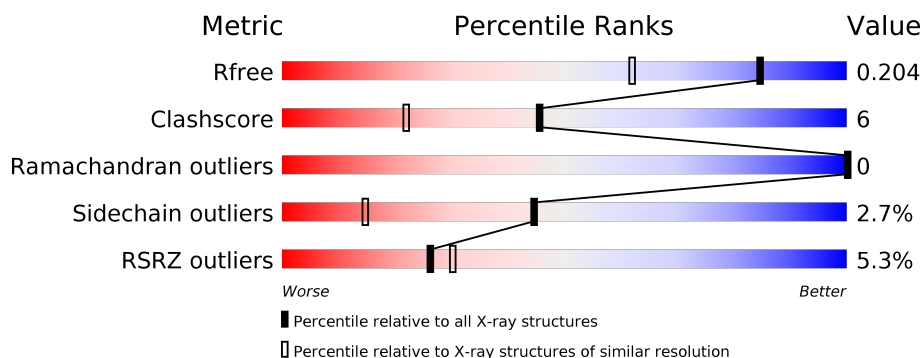
# 1 Overall quality at a glance

The following experimental techniques were used to determine the structure:

## *X-RAY DIFFRACTION*

The reported resolution of this entry is 1.53 Å.

Percentile scores (ranging between 0-100) for global validation metrics of the entry are shown in the following graphic. The table shows the number of entries on which the scores are based.



Metric	Whole archive (#Entries)	Similar resolution (#Entries, resolution range(Å))
$R_{free}$	130704	2556 (1.56-1.52)
Clashscore	141614	2634 (1.56-1.52)
Ramachandran outliers	138981	2580 (1.56-1.52)
Sidechain outliers	138945	2577 (1.56-1.52)
RSRZ outliers	127900	2524 (1.56-1.52)

The table below summarises the geometric issues observed across the polymeric chains and their fit to the electron density. The red, orange, yellow and green segments on the lower bar indicate the fraction of residues that contain outliers for  $\geq 3$ , 2, 1 and 0 types of geometric quality criteria respectively. A grey segment represents the fraction of residues that are not modelled. The numeric value for each fraction is indicated below the corresponding segment, with a dot representing fractions  $\leq 5\%$ . The upper red bar (where present) indicates the fraction of residues that have poor fit to the electron density. The numeric value is given above the bar.

Mol	Chain	Length	Quality of chain
1	A	406	<div> <div>5%</div> <div> <div></div> <div>77%</div> <div>17%</div> <div>• •</div> </div> </div>

## 2 Entry composition [i](#)

There are 4 unique types of molecules in this entry. The entry contains 3497 atoms, of which 0 are hydrogens and 0 are deuteriums.

In the tables below, the ZeroOcc column contains the number of atoms modelled with zero occupancy, the AltConf column contains the number of residues with at least one atom in alternate conformation and the Trace column contains the number of residues modelled with at most 2 atoms.

- Molecule 1 is a protein called Camphor 5-monooxygenase.

Mol	Chain	Residues	Atoms					ZeroOcc	AltConf	Trace
			Total	C	N	O	S			
1	A	394	3153	1997	553	585	18	0	6	0

There is a discrepancy between the modelled and reference sequences:

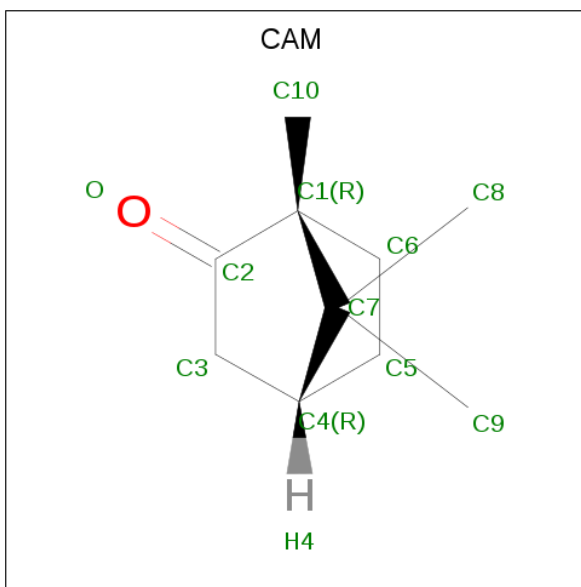
Chain	Residue	Modelled	Actual	Comment	Reference
A	334	ALA	CYS	engineered mutation	UNP P00183

- Molecule 2 is PROTOPORPHYRIN IX CONTAINING FE (three-letter code: HEM) (formula:  $C_{34}H_{32}FeN_4O_4$ ).



Mol	Chain	Residues	Atoms					ZeroOcc	AltConf
			Total	C	Fe	N	O		
2	A	1	43	34	1	4	4	0	0

- Molecule 3 is CAMPHOR (three-letter code: CAM) (formula:  $C_{10}H_{16}O$ ).



Mol	Chain	Residues	Atoms			ZeroOcc	AltConf
3	A	1	Total	C	O	0	1
			11	10	1		
3	A	1	Total	C	O	0	1
			11	10	1		

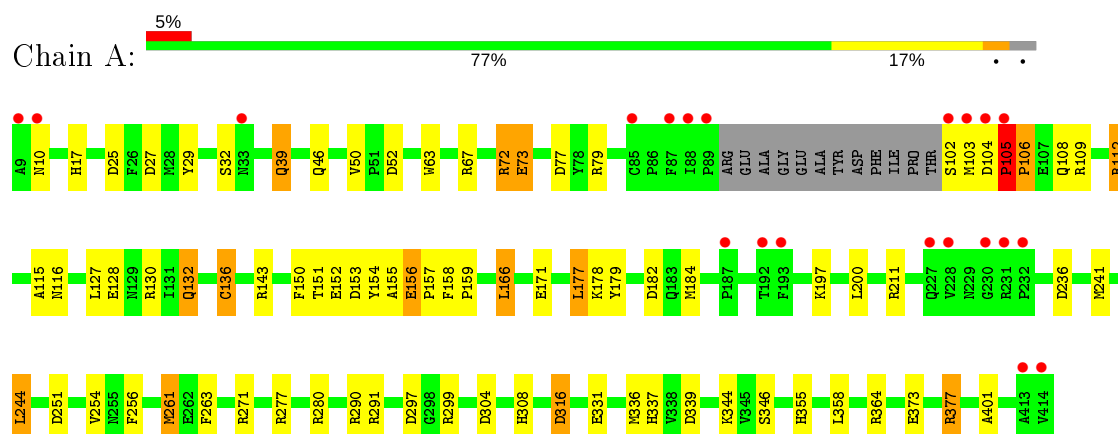
- Molecule 4 is water.

Mol	Chain	Residues	Atoms		ZeroOcc	AltConf
4	A	279	Total	O	0	0
			279	279		

### 3 Residue-property plots [i](#)

These plots are drawn for all protein, RNA and DNA chains in the entry. The first graphic for a chain summarises the proportions of the various outlier classes displayed in the second graphic. The second graphic shows the sequence view annotated by issues in geometry and electron density. Residues are color-coded according to the number of geometric quality criteria for which they contain at least one outlier: green = 0, yellow = 1, orange = 2 and red = 3 or more. A red dot above a residue indicates a poor fit to the electron density ( $RSRZ > 2$ ). Stretches of 2 or more consecutive residues without any outlier are shown as a green connector. Residues present in the sample, but not in the model, are shown in grey.

- Molecule 1: Camphor 5-monooxygenase



## 4 Data and refinement statistics

Property	Value	Source
Space group	P 21 21 21	Depositor
Cell constants a, b, c, $\alpha$ , $\beta$ , $\gamma$	65.54Å 73.80Å 90.24Å 90.00° 90.00° 90.00°	Depositor
Resolution (Å)	34.15 – 1.53 34.15 – 1.53	Depositor EDS
% Data completeness (in resolution range)	99.6 (34.15-1.53) 99.6 (34.15-1.53)	Depositor EDS
$R_{merge}$	(Not available)	Depositor
$R_{sym}$	0.06	Depositor
$\langle I/\sigma(I) \rangle$ <sup>1</sup>	2.49 (at 1.53Å)	Xtriage
Refinement program	REFMAC	Depositor
R, $R_{free}$	0.179 , 0.205 0.178 , 0.204	Depositor DCC
$R_{free}$ test set	3369 reflections (5.07%)	wwPDB-VP
Wilson B-factor (Å <sup>2</sup> )	19.1	Xtriage
Anisotropy	0.043	Xtriage
Bulk solvent $k_{sol}$ (e/Å <sup>3</sup> ), $B_{sol}$ (Å <sup>2</sup> )	0.39 , 55.5	EDS
L-test for twinning <sup>2</sup>	$\langle  L  \rangle = 0.49$ , $\langle L^2 \rangle = 0.32$	Xtriage
Estimated twinning fraction	No twinning to report.	Xtriage
$F_o, F_c$ correlation	0.96	EDS
Total number of atoms	3497	wwPDB-VP
Average B, all atoms (Å <sup>2</sup> )	22.0	wwPDB-VP

Xtriage's analysis on translational NCS is as follows: *The largest off-origin peak in the Patterson function is 5.70% of the height of the origin peak. No significant pseudotranslation is detected.*

<sup>1</sup>Intensities estimated from amplitudes.

<sup>2</sup>Theoretical values of  $\langle |L| \rangle$ ,  $\langle L^2 \rangle$  for acentric reflections are 0.5, 0.333 respectively for untwinned datasets, and 0.375, 0.2 for perfectly twinned datasets.

## 5 Model quality [i](#)

### 5.1 Standard geometry [i](#)

Bond lengths and bond angles in the following residue types are not validated in this section: HEM, CAM

The Z score for a bond length (or angle) is the number of standard deviations the observed value is removed from the expected value. A bond length (or angle) with  $|Z| > 5$  is considered an outlier worth inspection. RMSZ is the root-mean-square of all Z scores of the bond lengths (or angles).

Mol	Chain	Bond lengths		Bond angles	
		RMSZ	$\# Z  > 5$	RMSZ	$\# Z  > 5$
1	A	1.47	20/3235 (0.6%)	1.51	45/4395 (1.0%)

All (20) bond length outliers are listed below:

Mol	Chain	Res	Type	Atoms	Z	Observed(Å)	Ideal(Å)
1	A	105	PRO	C-N	8.12	1.49	1.34
1	A	67	ARG	CZ-NH1	7.75	1.43	1.33
1	A	52	ASP	CB-CG	7.07	1.66	1.51
1	A	261	MET	SD-CE	-6.55	1.41	1.77
1	A	179	TYR	CE2-CZ	-6.25	1.30	1.38
1	A	72	ARG	CG-CD	6.06	1.67	1.51
1	A	179	TYR	CD2-CE2	6.03	1.48	1.39
1	A	106	PRO	N-CA	5.95	1.57	1.47
1	A	156	GLU	CB-CG	5.84	1.63	1.52
1	A	136[A]	CYS	CB-SG	-5.73	1.72	1.81
1	A	136[B]	CYS	CB-SG	-5.73	1.72	1.81
1	A	154	TYR	CE2-CZ	5.72	1.46	1.38
1	A	106	PRO	C-O	5.71	1.34	1.23
1	A	63	TRP	CE3-CZ3	5.51	1.47	1.38
1	A	401	ALA	CA-CB	5.37	1.63	1.52
1	A	29	TYR	CD2-CE2	-5.29	1.31	1.39
1	A	152	GLU	CD-OE2	-5.28	1.19	1.25
1	A	73	GLU	CD-OE1	-5.28	1.19	1.25
1	A	50	VAL	CB-CG1	5.07	1.63	1.52
1	A	116	ASN	CB-CG	-5.05	1.39	1.51

All (45) bond angle outliers are listed below:

Mol	Chain	Res	Type	Atoms	Z	Observed(°)	Ideal(°)
1	A	297	ASP	CB-CG-OD1	-15.96	103.94	118.30

*Continued on next page...*

*Continued from previous page...*

Mol	Chain	Res	Type	Atoms	Z	Observed(°)	Ideal(°)
1	A	72	ARG	NE-CZ-NH1	-15.46	112.57	120.30
1	A	72	ARG	NE-CZ-NH2	14.01	127.31	120.30
1	A	112	ARG	NE-CZ-NH2	-12.90	113.85	120.30
1	A	299	ARG	NE-CZ-NH2	-12.07	114.26	120.30
1	A	336	MET	CG-SD-CE	-12.01	80.99	100.20
1	A	297	ASP	CB-CG-OD2	10.40	127.66	118.30
1	A	67	ARG	NE-CZ-NH2	-10.30	115.15	120.30
1	A	32	SER	C-N-CA	-10.06	96.54	121.70
1	A	105	PRO	C-N-CD	-9.88	98.87	120.60
1	A	377	ARG	NE-CZ-NH1	9.21	124.90	120.30
1	A	79	ARG	NE-CZ-NH1	9.04	124.82	120.30
1	A	72	ARG	CD-NE-CZ	-9.01	110.98	123.60
1	A	299	ARG	NE-CZ-NH1	8.90	124.75	120.30
1	A	256	PHE	CB-CG-CD1	-8.56	114.81	120.80
1	A	182	ASP	CB-CG-OD1	8.36	125.83	118.30
1	A	241	MET	CG-SD-CE	-8.20	87.08	100.20
1	A	304	ASP	CB-CG-OD1	8.08	125.57	118.30
1	A	291	ARG	NE-CZ-NH1	7.88	124.24	120.30
1	A	25	ASP	CB-CG-OD1	7.55	125.09	118.30
1	A	364	ARG	NE-CZ-NH1	-7.22	116.69	120.30
1	A	130	ARG	NE-CZ-NH2	-7.14	116.73	120.30
1	A	263	PHE	CB-CG-CD1	-7.05	115.86	120.80
1	A	271	ARG	NE-CZ-NH1	6.78	123.69	120.30
1	A	153	ASP	CB-CG-OD1	-6.72	112.25	118.30
1	A	105	PRO	C-N-CA	6.71	150.20	122.00
1	A	297	ASP	N-CA-CB	6.58	122.44	110.60
1	A	339	ASP	CB-CG-OD1	6.48	124.13	118.30
1	A	280	ARG	NE-CZ-NH1	-6.46	117.07	120.30
1	A	166	LEU	CB-CG-CD1	-6.42	100.09	111.00
1	A	143	ARG	NE-CZ-NH1	-6.11	117.25	120.30
1	A	290	ARG	NE-CZ-NH2	-5.90	117.35	120.30
1	A	211	ARG	NE-CZ-NH1	5.86	123.23	120.30
1	A	211	ARG	NE-CZ-NH2	-5.71	117.44	120.30
1	A	177	LEU	CB-CG-CD1	5.70	120.70	111.00
1	A	52	ASP	CB-CG-OD2	-5.66	113.20	118.30
1	A	27	ASP	CB-CG-OD1	5.62	123.36	118.30
1	A	52	ASP	CB-CG-OD1	5.48	123.23	118.30
1	A	77	ASP	CB-CG-OD2	-5.48	113.37	118.30
1	A	316	ASP	CB-CG-OD2	-5.30	113.53	118.30
1	A	79	ARG	NE-CZ-NH2	-5.24	117.68	120.30
1	A	244	LEU	CB-CG-CD2	-5.21	102.14	111.00
1	A	154	TYR	CD1-CE1-CZ	-5.12	115.19	119.80

*Continued on next page...*



*Continued from previous page...*

Mol	Chain	Res	Type	Atoms	Z	Observed(°)	Ideal(°)
1	A	200	LEU	CB-CG-CD2	-5.12	102.30	111.00
1	A	277	ARG	NE-CZ-NH2	5.04	122.82	120.30

There are no chirality outliers.

There are no planarity outliers.

## 5.2 Too-close contacts ⓘ

In the following table, the Non-H and H(model) columns list the number of non-hydrogen atoms and hydrogen atoms in the chain respectively. The H(added) column lists the number of hydrogen atoms added and optimized by MolProbity. The Clashes column lists the number of clashes within the asymmetric unit, whereas Symm-Clashes lists symmetry related clashes.

Mol	Chain	Non-H	H(model)	H(added)	Clashes	Symm-Clashes
1	A	3153	0	3102	37	1
2	A	43	0	30	2	0
3	A	22	0	32	4	0
4	A	279	0	0	12	0
All	All	3497	0	3164	41	1

The all-atom clashscore is defined as the number of clashes found per 1000 atoms (including hydrogen atoms). The all-atom clashscore for this structure is 6.

All (41) close contacts within the same asymmetric unit are listed below, sorted by their clash magnitude.

Atom-1	Atom-2	Interatomic distance (Å)	Clash overlap (Å)
1:A:105:PRO:HA	4:A:606:HOH:O	1.36	1.26
1:A:127:LEU:HD12	1:A:166:LEU:HD21	1.24	1.15
3:A:502[A]:CAM:H91	4:A:664:HOH:O	1.51	1.08
3:A:502[A]:CAM:C9	4:A:664:HOH:O	2.02	1.05
1:A:105:PRO:HG2	4:A:839:HOH:O	1.62	0.98
1:A:127:LEU:HD12	1:A:166:LEU:CD2	2.00	0.91
1:A:73:GLU:OE2	1:A:308:HIS:HE1	1.56	0.89
1:A:373:GLU:OE1	1:A:377:ARG:NH1	2.08	0.87
1:A:127:LEU:CD1	1:A:166:LEU:HD21	2.06	0.86
1:A:105:PRO:HB3	1:A:109:ARG:NH2	2.01	0.76
1:A:127:LEU:CD1	1:A:166:LEU:CD2	2.65	0.74
1:A:106:PRO:HA	4:A:606:HOH:O	1.87	0.73
1:A:106:PRO:CA	4:A:606:HOH:O	2.38	0.72
1:A:108:GLN:NE2	1:A:112:ARG:HD2	2.04	0.71

*Continued on next page...*

Continued from previous page...

Atom-1	Atom-2	Interatomic distance (Å)	Clash overlap (Å)
1:A:344:LYS:HE3	4:A:654:HOH:O	1.94	0.67
1:A:73:GLU:OE2	1:A:308:HIS:CE1	2.44	0.67
3:A:502[A]:CAM:H92	4:A:664:HOH:O	1.83	0.60
1:A:132:GLN:OE1	1:A:136[A]:CYS:SG	2.61	0.58
1:A:150:PHE:CZ	1:A:261:MET:HG3	2.43	0.54
1:A:178:LYS:HG3	4:A:632:HOH:O	2.07	0.53
1:A:17:HIS:HE1	1:A:316:ASP:OD2	1.91	0.53
1:A:156:GLU:HB2	1:A:157:PRO:HD3	1.92	0.52
1:A:104:ASP:HB3	1:A:105:PRO:HD2	1.93	0.51
1:A:127:LEU:CD1	1:A:166:LEU:HD23	2.43	0.48
1:A:39:GLN:NE2	1:A:39:GLN:H	2.11	0.48
1:A:377:ARG:NH2	4:A:601:HOH:O	2.37	0.47
1:A:106:PRO:N	4:A:606:HOH:O	2.48	0.46
1:A:244:LEU:HG	2:A:501:HEM:HMD2	1.97	0.46
1:A:184:MET:CE	1:A:197:LYS:HA	2.47	0.45
1:A:105:PRO:HB3	1:A:109:ARG:HH22	1.76	0.43
1:A:156:GLU:HA	1:A:254:VAL:HG22	2.00	0.43
1:A:158:PHE:HB3	1:A:159:PRO:CD	2.49	0.42
1:A:151:THR:HA	1:A:155:ALA:HB3	2.01	0.42
1:A:46:GLN:NE2	4:A:609:HOH:O	2.51	0.42
1:A:331[A]:GLU:OE2	1:A:346:SER:OG	2.29	0.41
1:A:115:ALA:HB3	1:A:358:LEU:HD13	2.03	0.41
1:A:103:MET:O	1:A:355:HIS:CE1	2.75	0.40
1:A:197:LYS:HB3	1:A:197:LYS:HE2	1.96	0.40
1:A:115:ALA:CB	1:A:358:LEU:HD13	2.52	0.40
2:A:501:HEM:C1A	3:A:503[B]:CAM:H32	2.57	0.40
1:A:72:ARG:HH11	1:A:72:ARG:HD3	1.36	0.40

All (1) symmetry-related close contacts are listed below. The label for Atom-2 includes the symmetry operator and encoded unit-cell translations to be applied.

Atom-1	Atom-2	Interatomic distance (Å)	Clash overlap (Å)
1:A:128:GLU:OE2	1:A:337[A]:HIS:CD2[4_555]	2.15	0.05

## 5.3 Torsion angles ⓘ

### 5.3.1 Protein backbone ⓘ

In the following table, the Percentiles column shows the percent Ramachandran outliers of the chain as a percentile score with respect to all X-ray entries followed by that with respect to entries

of similar resolution.

The Analysed column shows the number of residues for which the backbone conformation was analysed, and the total number of residues.

Mol	Chain	Analysed	Favoured	Allowed	Outliers	Percentiles	
1	A	396/406 (98%)	387 (98%)	9 (2%)	0	100	100

There are no Ramachandran outliers to report.

### 5.3.2 Protein sidechains ⓘ

In the following table, the Percentiles column shows the percent sidechain outliers of the chain as a percentile score with respect to all X-ray entries followed by that with respect to entries of similar resolution.

The Analysed column shows the number of residues for which the sidechain conformation was analysed, and the total number of residues.

Mol	Chain	Analysed	Rotameric	Outliers	Percentiles	
1	A	345/349 (99%)	336 (97%)	9 (3%)	46	16

All (9) residues with a non-rotameric sidechain are listed below:

Mol	Chain	Res	Type
1	A	10	ASN
1	A	39	GLN
1	A	102	SER
1	A	105	PRO
1	A	132	GLN
1	A	171	GLU
1	A	177	LEU
1	A	236	ASP
1	A	251	ASP

Some sidechains can be flipped to improve hydrogen bonding and reduce clashes. All (10) such sidechains are listed below:

Mol	Chain	Res	Type
1	A	10	ASN
1	A	17	HIS
1	A	21	HIS
1	A	39	GLN
1	A	46	GLN

*Continued on next page...*

*Continued from previous page...*

Mol	Chain	Res	Type
1	A	69	GLN
1	A	225	ASN
1	A	308	HIS
1	A	343	GLN
1	A	400	GLN

### 5.3.3 RNA ⓘ

There are no RNA molecules in this entry.

## 5.4 Non-standard residues in protein, DNA, RNA chains ⓘ

There are no non-standard protein/DNA/RNA residues in this entry.

## 5.5 Carbohydrates ⓘ

There are no carbohydrates in this entry.

## 5.6 Ligand geometry ⓘ

3 ligands are modelled in this entry.

In the following table, the Counts columns list the number of bonds (or angles) for which Mogul statistics could be retrieved, the number of bonds (or angles) that are observed in the model and the number of bonds (or angles) that are defined in the Chemical Component Dictionary. The Link column lists molecule types, if any, to which the group is linked. The Z score for a bond length (or angle) is the number of standard deviations the observed value is removed from the expected value. A bond length (or angle) with  $|Z| > 2$  is considered an outlier worth inspection. RMSZ is the root-mean-square of all Z scores of the bond lengths (or angles).

Mol	Type	Chain	Res	Link	Bond lengths			Bond angles		
					Counts	RMSZ	$\# Z  > 2$	Counts	RMSZ	$\# Z  > 2$
3	CAM	A	502[A]	-	12,12,12	3.62	1 (8%)	20,21,21	1.28	3 (15%)
2	HEM	A	501	1,4	27,50,50	1.78	7 (25%)	17,82,82	3.03	10 (58%)
3	CAM	A	503[B]	-	12,12,12	3.54	1 (8%)	20,21,21	1.29	2 (10%)

In the following table, the Chirals column lists the number of chiral outliers, the number of chiral centers analysed, the number of these observed in the model and the number defined in the Chemical Component Dictionary. Similar counts are reported in the Torsion and Rings columns. '-' means no outliers of that kind were identified.

Mol	Type	Chain	Res	Link	Chirals	Torsions	Rings
3	CAM	A	502[A]	-	-	-	0/3/2/2
2	HEM	A	501	1,4	-	0/6/54/54	-
3	CAM	A	503[B]	-	-	-	0/3/2/2

All (9) bond length outliers are listed below:

Mol	Chain	Res	Type	Atoms	Z	Observed(Å)	Ideal(Å)
3	A	502[A]	CAM	O-C2	12.39	1.41	1.21
3	A	503[B]	CAM	O-C2	12.10	1.41	1.21
2	A	501	HEM	C3C-C2C	-3.98	1.34	1.40
2	A	501	HEM	CAA-C2A	3.72	1.57	1.52
2	A	501	HEM	CMD-C2D	2.93	1.57	1.51
2	A	501	HEM	C3C-CAC	2.89	1.53	1.47
2	A	501	HEM	C1C-C2C	2.68	1.48	1.42
2	A	501	HEM	C2A-C3A	-2.12	1.31	1.37
2	A	501	HEM	C3B-CAB	2.06	1.52	1.47

All (15) bond angle outliers are listed below:

Mol	Chain	Res	Type	Atoms	Z	Observed(°)	Ideal(°)
2	A	501	HEM	C4C-C3C-C2C	5.54	110.77	106.90
2	A	501	HEM	CMD-C2D-C1D	-4.71	121.22	128.46
2	A	501	HEM	CMC-C2C-C3C	4.50	133.10	124.68
2	A	501	HEM	C4A-C3A-C2A	4.40	110.06	107.00
2	A	501	HEM	C1D-C2D-C3D	3.87	109.69	107.00
2	A	501	HEM	CMB-C2B-C3B	3.47	131.16	124.68
2	A	501	HEM	CMA-C3A-C4A	-3.30	123.40	128.46
2	A	501	HEM	CBD-CAD-C3D	-3.13	106.71	112.48
3	A	502[A]	CAM	C7-C1-C2	-3.08	95.05	100.30
3	A	502[A]	CAM	C9-C7-C8	2.52	113.98	107.62
3	A	502[A]	CAM	C10-C1-C2	2.23	118.19	108.99
3	A	503[B]	CAM	C6-C5-C4	2.16	106.52	103.15
2	A	501	HEM	CMD-C2D-C3D	2.12	128.94	124.94
2	A	501	HEM	CAD-CBD-CGD	-2.07	109.21	112.67
3	A	503[B]	CAM	C5-C4-C3	-2.00	100.89	106.40

There are no chirality outliers.

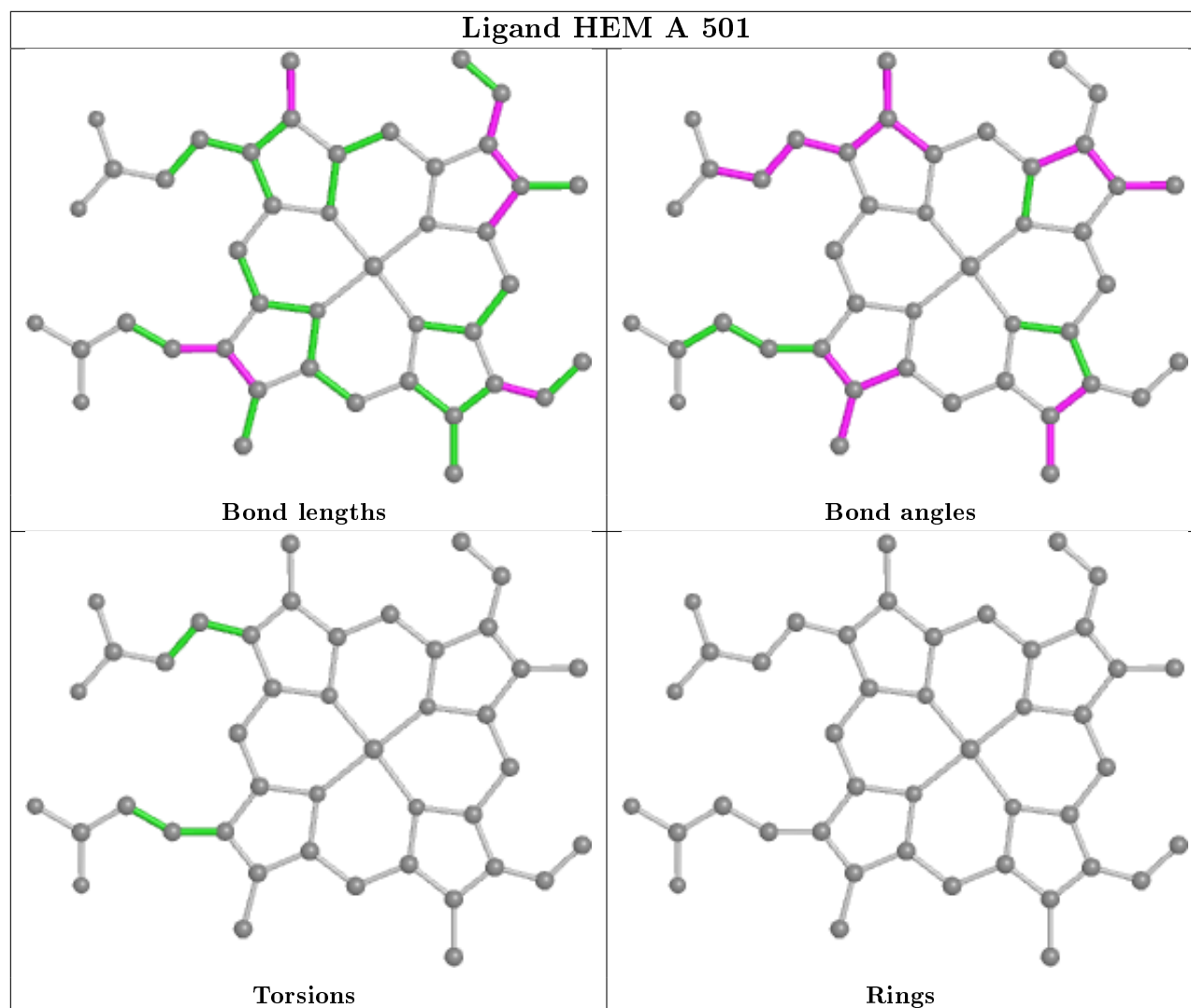
There are no torsion outliers.

There are no ring outliers.

3 monomers are involved in 5 short contacts:

Mol	Chain	Res	Type	Clashes	Symm-Clashes
3	A	502[A]	CAM	3	0
2	A	501	HEM	2	0
3	A	503[B]	CAM	1	0

The following is a two-dimensional graphical depiction of Mogul quality analysis of bond lengths, bond angles, torsion angles, and ring geometry for all instances of the Ligand of Interest. In addition, ligands with molecular weight > 250 and outliers as shown on the validation Tables will also be included. For torsion angles, if less than 5% of the Mogul distribution of torsion angles is within 10 degrees of the torsion angle in question, then that torsion angle is considered an outlier. Any bond that is central to one or more torsion angles identified as an outlier by Mogul will be highlighted in the graph. For rings, the root-mean-square deviation (RMSD) between the ring in question and similar rings identified by Mogul is calculated over all ring torsion angles. If the average RMSD is greater than 60 degrees and the minimal RMSD between the ring in question and any Mogul-identified rings is also greater than 60 degrees, then that ring is considered an outlier. The outliers are highlighted in purple. The color gray indicates Mogul did not find sufficient equivalents in the CSD to analyse the geometry.



## 5.7 Other polymers [i](#)

There are no such residues in this entry.

## 5.8 Polymer linkage issues [i](#)

There are no chain breaks in this entry.

## 6 Fit of model and data [i](#)

### 6.1 Protein, DNA and RNA chains [i](#)

In the following table, the column labelled ‘#RSRZ> 2’ contains the number (and percentage) of RSRZ outliers, followed by percent RSRZ outliers for the chain as percentile scores relative to all X-ray entries and entries of similar resolution. The OWAB column contains the minimum, median, 95<sup>th</sup> percentile and maximum values of the occupancy-weighted average B-factor per residue. The column labelled ‘Q< 0.9’ lists the number of (and percentage) of residues with an average occupancy less than 0.9.

Mol	Chain	Analysed	<RSRZ>	#RSRZ>2		OWAB(Å <sup>2</sup> )	Q<0.9
1	A	394/406 (97%)	0.09	21 (5%)	26 30	11, 19, 39, 52	0

All (21) RSRZ outliers are listed below:

Mol	Chain	Res	Type	RSRZ
1	A	9	ALA	7.3
1	A	414	VAL	5.3
1	A	10	ASN	5.1
1	A	105	PRO	4.8
1	A	230	GLY	4.2
1	A	193	PHE	4.1
1	A	89	PRO	3.9
1	A	227	GLN	3.5
1	A	104	ASP	3.4
1	A	102	SER	3.4
1	A	232	PRO	3.4
1	A	87	PHE	3.1
1	A	85	CYS	3.1
1	A	192	THR	3.0
1	A	103	MET	2.7
1	A	228	VAL	2.7
1	A	33	ASN	2.5
1	A	231	ARG	2.4
1	A	413	ALA	2.4
1	A	187	PRO	2.3
1	A	88	ILE	2.1

### 6.2 Non-standard residues in protein, DNA, RNA chains [i](#)

There are no non-standard protein/DNA/RNA residues in this entry.



### 6.3 Carbohydrates [i](#)

There are no carbohydrates in this entry.

### 6.4 Ligands [i](#)

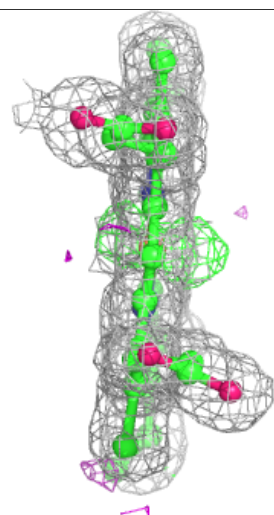
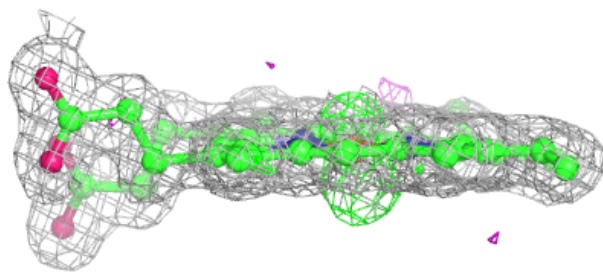
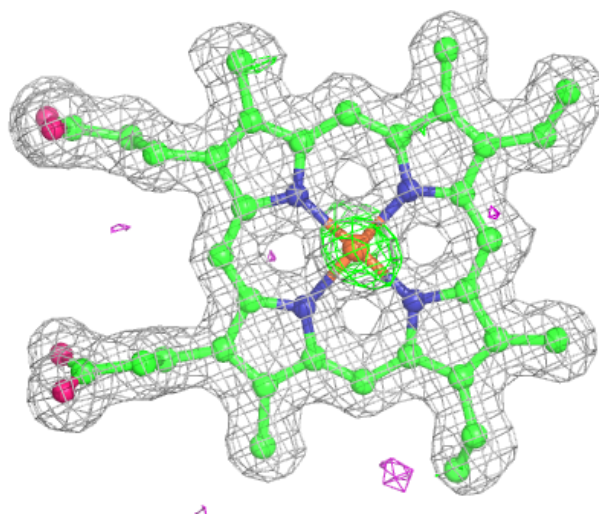
In the following table, the Atoms column lists the number of modelled atoms in the group and the number defined in the chemical component dictionary. The B-factors column lists the minimum, median, 95<sup>th</sup> percentile and maximum values of B factors of atoms in the group. The column labelled 'Q< 0.9' lists the number of atoms with occupancy less than 0.9.

Mol	Type	Chain	Res	Atoms	RSCC	RSR	B-factors(Å <sup>2</sup> )	Q<0.9
3	CAM	A	502[A]	11/11	0.69	0.24	70,75,75,76	11
3	CAM	A	503[B]	11/11	0.74	0.22	64,65,66,68	11
2	HEM	A	501	43/43	0.98	0.10	10,13,20,32	0

The following is a graphical depiction of the model fit to experimental electron density of all instances of the Ligand of Interest. In addition, ligands with molecular weight > 250 and outliers as shown on the geometry validation Tables will also be included. Each fit is shown from different orientation to approximate a three-dimensional view.

**Electron density around HEM A 501:**

$2mF_o-DF_c$  (at 0.7 rmsd) in gray  
 $mF_o-DF_c$  (at 3 rmsd) in purple (negative)  
and green (positive)



## 6.5 Other polymers ⓘ

There are no such residues in this entry.