



# Full wwPDB X-ray Structure Validation Report ⓘ

May 15, 2020 – 03:26 pm BST

PDB ID : 3IPQ  
Title : X-ray structure of GW3965 synthetic agonist bound to the LXR-alpha  
Authors : Fradera, X.; Vu, D.; Nimz, O.; Skene, R.; Hosfield, D.; Wijnands, R.; Cooke, A.J.; Haunso, A.; King, A.; Bennet, D.J.; McGuire, R.; Uitdehaag, J.C.M.  
Deposited on : 2009-08-18  
Resolution : 2.00 Å(reported)

This is a Full wwPDB X-ray Structure Validation Report for a publicly released PDB entry.

We welcome your comments at [validation@mail.wwpdb.org](mailto:validation@mail.wwpdb.org)

A user guide is available at

<https://www.wwpdb.org/validation/2017/XrayValidationReportHelp>

with specific help available everywhere you see the ⓘ symbol.

---

The following versions of software and data (see [references ⓘ](#)) were used in the production of this report:

MolProbity : 4.02b-467  
Mogul : 1.8.5 (274361), CSD as541be (2020)  
Xtriage (Phenix) : 1.13  
EDS : 2.11  
buster-report : 1.1.7 (2018)  
Percentile statistics : 20191225.v01 (using entries in the PDB archive December 25th 2019)  
Refmac : 5.8.0158  
CCP4 : 7.0.044 (Gargrove)  
Ideal geometry (proteins) : Engh & Huber (2001)  
Ideal geometry (DNA, RNA) : Parkinson et al. (1996)  
Validation Pipeline (wwPDB-VP) : 2.11

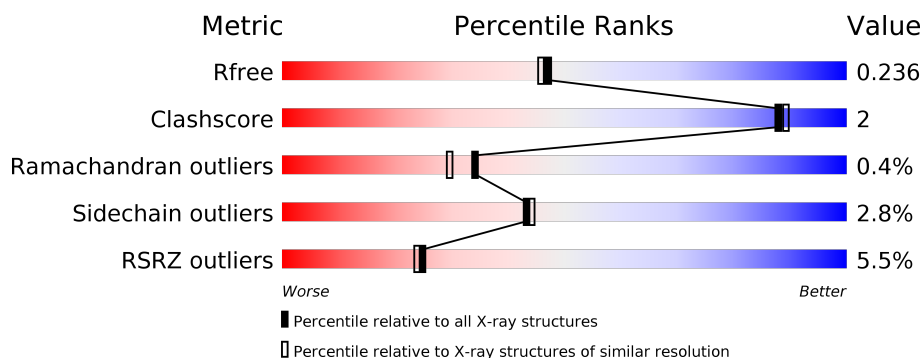
# 1 Overall quality at a glance

The following experimental techniques were used to determine the structure:

## *X-RAY DIFFRACTION*

The reported resolution of this entry is 2.00 Å.

Percentile scores (ranging between 0-100) for global validation metrics of the entry are shown in the following graphic. The table shows the number of entries on which the scores are based.



Metric	Whole archive (#Entries)	Similar resolution (#Entries, resolution range(Å))
$R_{free}$	130704	8085 (2.00-2.00)
Clashscore	141614	9178 (2.00-2.00)
Ramachandran outliers	138981	9054 (2.00-2.00)
Sidechain outliers	138945	9053 (2.00-2.00)
RSRZ outliers	127900	7900 (2.00-2.00)

The table below summarises the geometric issues observed across the polymeric chains and their fit to the electron density. The red, orange, yellow and green segments on the lower bar indicate the fraction of residues that contain outliers for  $\geq 3$ , 2, 1 and 0 types of geometric quality criteria respectively. A grey segment represents the fraction of residues that are not modelled. The numeric value for each fraction is indicated below the corresponding segment, with a dot representing fractions  $\leq 5\%$ . The upper red bar (where present) indicates the fraction of residues that have poor fit to the electron density. The numeric value is given above the bar.

Mol	Chain	Length	Quality of chain
1	A	283	<div> <div>5%</div> <div> <div></div> <div>71%</div> <div>7%</div> <div>22%</div> </div> </div>
2	B	25	<div> <div>60%</div> <div>40%</div> </div>

## 2 Entry composition

There are 5 unique types of molecules in this entry. The entry contains 2086 atoms, of which 0 are hydrogens and 0 are deuteriums.

In the tables below, the ZeroOcc column contains the number of atoms modelled with zero occupancy, the AltConf column contains the number of residues with at least one atom in alternate conformation and the Trace column contains the number of residues modelled with at most 2 atoms.

- Molecule 1 is a protein called Oxysterols receptor LXR-alpha.

Mol	Chain	Residues	Atoms					ZeroOcc	AltConf	Trace
1	A	220	Total	C	N	O	S	0	0	0
			1791	1150	307	328	6			

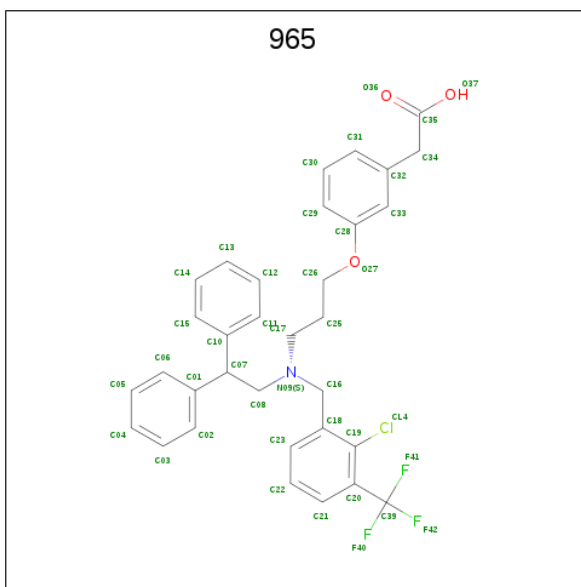
There are 17 discrepancies between the modelled and reference sequences:

Chain	Residue	Modelled	Actual	Comment	Reference
A	165	MET	-	EXPRESSION TAG	UNP Q13133
A	166	LYS	-	EXPRESSION TAG	UNP Q13133
A	167	HIS	-	EXPRESSION TAG	UNP Q13133
A	168	GLN	-	EXPRESSION TAG	UNP Q13133
A	169	HIS	-	EXPRESSION TAG	UNP Q13133
A	170	GLN	-	EXPRESSION TAG	UNP Q13133
A	171	HIS	-	EXPRESSION TAG	UNP Q13133
A	172	GLN	-	EXPRESSION TAG	UNP Q13133
A	173	HIS	-	EXPRESSION TAG	UNP Q13133
A	174	GLN	-	EXPRESSION TAG	UNP Q13133
A	175	HIS	-	EXPRESSION TAG	UNP Q13133
A	176	GLN	-	EXPRESSION TAG	UNP Q13133
A	177	HIS	-	EXPRESSION TAG	UNP Q13133
A	178	GLN	-	EXPRESSION TAG	UNP Q13133
A	179	GLN	-	EXPRESSION TAG	UNP Q13133
A	180	PRO	-	EXPRESSION TAG	UNP Q13133
A	181	LEU	-	EXPRESSION TAG	UNP Q13133

- Molecule 2 is a protein called Nuclear receptor coactivator 1.

Mol	Chain	Residues	Atoms				ZeroOcc	AltConf	Trace
2	B	15	Total	C	N	O	0	0	0
			131	82	27	22			

- Molecule 3 is [3-(3-{[2-chloro-3-(trifluoromethyl)benzyl](2,2-diphenylethyl)amino}propoxy)phenyl]acetic acid (three-letter code: 965) (formula: C<sub>33</sub>H<sub>31</sub>ClF<sub>3</sub>NO<sub>3</sub>).



Mol	Chain	Residues	Atoms						ZeroOcc	AltConf
3	A	1	Total	C	Cl	F	N	O	0	0
			41	33	1	3	1	3		

- Molecule 4 is SULFATE ION (three-letter code: SO4) (formula: O<sub>4</sub>S).



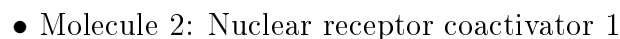
Mol	Chain	Residues	Atoms		ZeroOcc	AltConf
4	B	1	Total	O S	0	0
			5	4 1		

- Molecule 5 is water.

Mol	Chain	Residues	Atoms		ZeroOcc	AltConf
5	A	108	Total 108	O 108	0	0
5	B	10	Total 10	O 10	0	0



- Molecule 1: Oxysterols receptor LXR-alpha



## 4 Data and refinement statistics

Property	Value	Source
Space group	I 4 2 2	Depositor
Cell constants a, b, c, $\alpha$ , $\beta$ , $\gamma$	125.59 Å   125.59 Å   92.41 Å 90.00°   90.00°   90.00°	Depositor
Resolution (Å)	15.75 – 2.00 15.75 – 2.00	Depositor EDS
% Data completeness (in resolution range)	99.7 (15.75-2.00) 99.7 (15.75-2.00)	Depositor EDS
$R_{merge}$	(Not available)	Depositor
$R_{sym}$	(Not available)	Depositor
$\langle I/\sigma(I) \rangle$ <sup>1</sup>	5.56 (at 2.00 Å)	Xtriage
Refinement program	REFMAC 5.2.0019	Depositor
R, $R_{free}$	0.199   ,   0.234 0.206   ,   0.236	Depositor DCC
$R_{free}$ test set	1279 reflections (5.10%)	wwPDB-VP
Wilson B-factor (Å <sup>2</sup> )	24.1	Xtriage
Anisotropy	0.012	Xtriage
Bulk solvent $k_{sol}$ (e/Å <sup>3</sup> ), $B_{sol}$ (Å <sup>2</sup> )	0.38 , 49.6	EDS
L-test for twinning <sup>2</sup>	$\langle  L  \rangle = 0.50$ , $\langle L^2 \rangle = 0.33$	Xtriage
Estimated twinning fraction	No twinning to report.	Xtriage
$F_o, F_c$ correlation	0.94	EDS
Total number of atoms	2086	wwPDB-VP
Average B, all atoms (Å <sup>2</sup> )	26.0	wwPDB-VP

Xtriage's analysis on translational NCS is as follows: *The largest off-origin peak in the Patterson function is 5.76% of the height of the origin peak. No significant pseudotranslation is detected.*

<sup>1</sup>Intensities estimated from amplitudes.

<sup>2</sup>Theoretical values of  $\langle |L| \rangle$ ,  $\langle L^2 \rangle$  for acentric reflections are 0.5, 0.333 respectively for untwinned datasets, and 0.375, 0.2 for perfectly twinned datasets.

## 5 Model quality

### 5.1 Standard geometry

Bond lengths and bond angles in the following residue types are not validated in this section: 965, SO4

The Z score for a bond length (or angle) is the number of standard deviations the observed value is removed from the expected value. A bond length (or angle) with  $|Z| > 5$  is considered an outlier worth inspection. RMSZ is the root-mean-square of all Z scores of the bond lengths (or angles).

Mol	Chain	Bond lengths		Bond angles	
		RMSZ	$\# Z  > 5$	RMSZ	$\# Z  > 5$
1	A	0.75	0/1828	0.74	2/2473 (0.1%)
2	B	0.70	0/132	0.75	0/175
All	All	0.75	0/1960	0.74	2/2648 (0.1%)

Chiral center outliers are detected by calculating the chiral volume of a chiral center and verifying if the center is modelled as a planar moiety or with the opposite hand. A planarity outlier is detected by checking planarity of atoms in a peptide group, atoms in a mainchain group or atoms of a sidechain that are expected to be planar.

Mol	Chain	#Chirality outliers	#Planarity outliers
1	A	0	1

There are no bond length outliers.

All (2) bond angle outliers are listed below:

Mol	Chain	Res	Type	Atoms	Z	Observed( $^{\circ}$ )	Ideal( $^{\circ}$ )
1	A	406	ARG	NE-CZ-NH2	-6.52	117.04	120.30
1	A	406	ARG	NE-CZ-NH1	6.40	123.50	120.30

There are no chirality outliers.

All (1) planarity outliers are listed below:

Mol	Chain	Res	Type	Group
1	A	248	GLU	Peptide

### 5.2 Too-close contacts

In the following table, the Non-H and H(model) columns list the number of non-hydrogen atoms and hydrogen atoms in the chain respectively. The H(added) column lists the number of hydrogen



atoms added and optimized by MolProbity. The Clashes column lists the number of clashes within the asymmetric unit, whereas Symm-Clashes lists symmetry related clashes.

Mol	Chain	Non-H	H(model)	H(added)	Clashes	Symm-Clashes
1	A	1791	0	1795	7	0
2	B	131	0	139	0	0
3	A	41	0	30	1	0
4	B	5	0	0	0	0
5	A	108	0	0	1	0
5	B	10	0	0	0	0
All	All	2086	0	1964	8	0

The all-atom clashscore is defined as the number of clashes found per 1000 atoms (including hydrogen atoms). The all-atom clashscore for this structure is 2.

All (8) close contacts within the same asymmetric unit are listed below, sorted by their clash magnitude.

Atom-1	Atom-2	Interatomic distance (Å)	Clash overlap (Å)
1:A:351:LEU:HB2	1:A:356:PHE:CE2	2.49	0.48
3:A:801:965:H172	3:A:801:965:H07	1.84	0.44
1:A:319:PHE:HB3	1:A:321:TYR:CE2	2.54	0.42
1:A:366:SER:O	1:A:369:ARG:HG2	2.20	0.42
1:A:332:GLN:NE2	5:A:30:HOH:O	2.53	0.42
1:A:236:THR:OG1	1:A:259:GLU:OE2	2.28	0.41
1:A:256:HIS:NE2	1:A:321:TYR:OH	2.44	0.41
1:A:426:PHE:O	1:A:429:ARG:HG2	2.20	0.41

There are no symmetry-related clashes.

## 5.3 Torsion angles ⓘ

### 5.3.1 Protein backbone ⓘ

In the following table, the Percentiles column shows the percent Ramachandran outliers of the chain as a percentile score with respect to all X-ray entries followed by that with respect to entries of similar resolution.

The Analysed column shows the number of residues for which the backbone conformation was analysed, and the total number of residues.

Mol	Chain	Analysed	Favoured	Allowed	Outliers	Percentiles
1	A	214/283 (76%)	211 (99%)	2 (1%)	1 (0%)	29 23

*Continued on next page...*

*Continued from previous page...*

Mol	Chain	Analysed	Favoured	Allowed	Outliers	Percentiles	
2	B	13/25 (52%)	12 (92%)	1 (8%)	0	100	100
All	All	227/308 (74%)	223 (98%)	3 (1%)	1 (0%)	34	30

All (1) Ramachandran outliers are listed below:

Mol	Chain	Res	Type
1	A	249	ALA

### 5.3.2 Protein sidechains ⓘ

In the following table, the Percentiles column shows the percent sidechain outliers of the chain as a percentile score with respect to all X-ray entries followed by that with respect to entries of similar resolution.

The Analysed column shows the number of residues for which the sidechain conformation was analysed, and the total number of residues.

Mol	Chain	Analysed	Rotameric	Outliers	Percentiles	
1	A	198/257 (77%)	192 (97%)	6 (3%)	41	41
2	B	15/24 (62%)	15 (100%)	0	100	100
All	All	213/281 (76%)	207 (97%)	6 (3%)	43	44

All (6) residues with a non-rotameric sidechain are listed below:

Mol	Chain	Res	Type
1	A	251	GLN
1	A	332	GLN
1	A	333	VAL
1	A	349	LEU
1	A	432	ASP
1	A	438	LEU

Some sidechains can be flipped to improve hydrogen bonding and reduce clashes. All (4) such sidechains are listed below:

Mol	Chain	Res	Type
1	A	274	GLN
1	A	280	GLN
1	A	332	GLN
1	A	375	GLN

### 5.3.3 RNA ⓘ

There are no RNA molecules in this entry.

## 5.4 Non-standard residues in protein, DNA, RNA chains ⓘ

There are no non-standard protein/DNA/RNA residues in this entry.

## 5.5 Carbohydrates ⓘ

There are no carbohydrates in this entry.

## 5.6 Ligand geometry ⓘ

2 ligands are modelled in this entry.

In the following table, the Counts columns list the number of bonds (or angles) for which Mogul statistics could be retrieved, the number of bonds (or angles) that are observed in the model and the number of bonds (or angles) that are defined in the Chemical Component Dictionary. The Link column lists molecule types, if any, to which the group is linked. The Z score for a bond length (or angle) is the number of standard deviations the observed value is removed from the expected value. A bond length (or angle) with  $|Z| > 2$  is considered an outlier worth inspection. RMSZ is the root-mean-square of all Z scores of the bond lengths (or angles).

Mol	Type	Chain	Res	Link	Bond lengths			Bond angles		
					Counts	RMSZ	# $ Z  > 2$	Counts	RMSZ	# $ Z  > 2$
3	965	A	801	-	39,44,44	0.81	1 (2%)	53,60,60	1.87	7 (13%)
4	SO4	B	802	-	4,4,4	0.25	0	6,6,6	0.71	0

In the following table, the Chirals column lists the number of chiral outliers, the number of chiral centers analysed, the number of these observed in the model and the number defined in the Chemical Component Dictionary. Similar counts are reported in the Torsion and Rings columns. '-' means no outliers of that kind were identified.

Mol	Type	Chain	Res	Link	Chirals	Torsions	Rings
3	965	A	801	-	-	6/31/33/33	0/4/4/4

All (1) bond length outliers are listed below:

Mol	Chain	Res	Type	Atoms	Z	Observed(Å)	Ideal(Å)
3	A	801	965	C19-CL4	3.69	1.80	1.72

All (7) bond angle outliers are listed below:

Mol	Chain	Res	Type	Atoms	Z	Observed(°)	Ideal(°)
3	A	801	965	C16-N09-C08	9.22	121.66	110.95
3	A	801	965	C23-C18-C19	4.34	120.50	117.43
3	A	801	965	C16-N09-C17	4.32	120.41	111.29
3	A	801	965	F41-C39-C20	-3.99	105.76	112.70
3	A	801	965	C26-O27-C28	3.22	126.34	117.93
3	A	801	965	C18-C16-N09	2.49	117.10	112.75
3	A	801	965	C17-N09-C08	2.23	117.27	111.96

There are no chirality outliers.

All (6) torsion outliers are listed below:

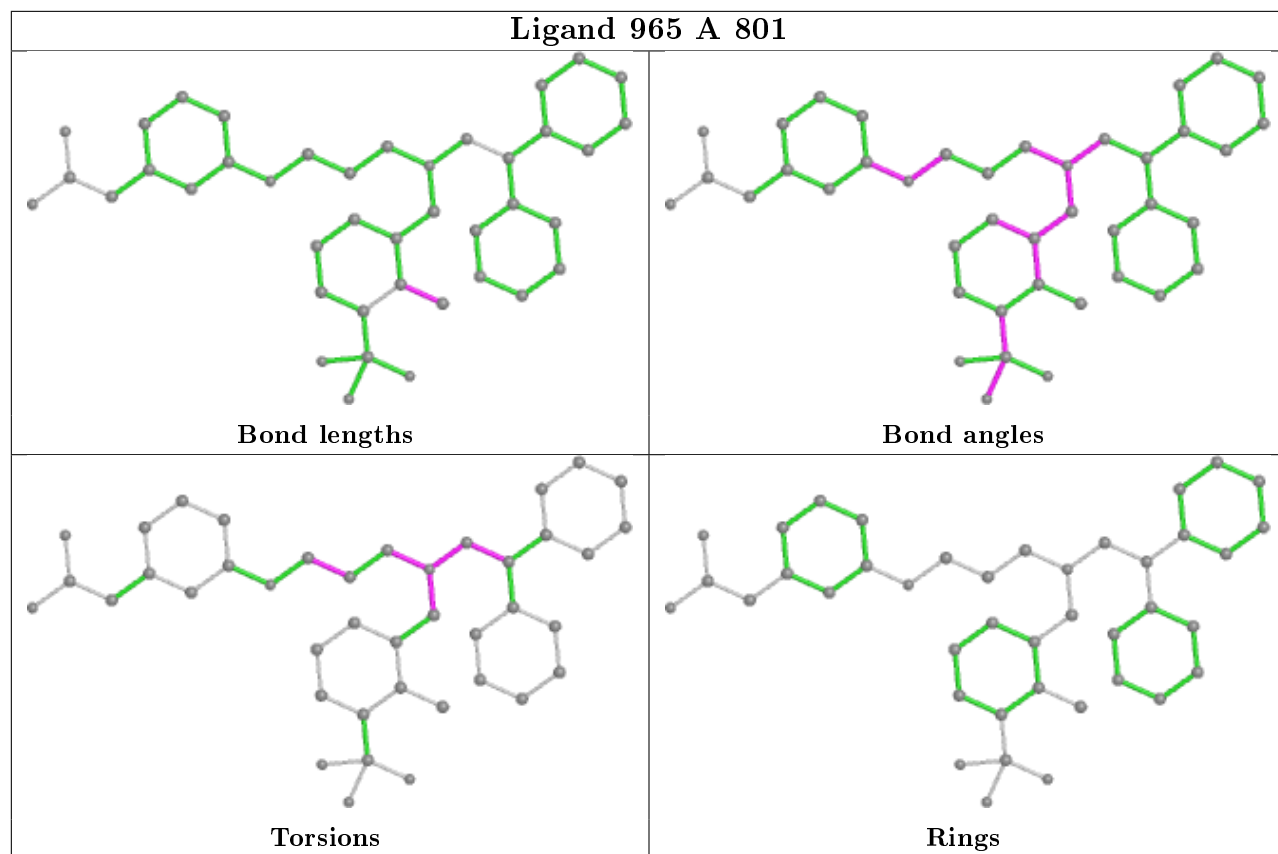
Mol	Chain	Res	Type	Atoms
3	A	801	965	C25-C17-N09-C16
3	A	801	965	C18-C16-N09-C08
3	A	801	965	C17-C25-C26-O27
3	A	801	965	C07-C08-N09-C17
3	A	801	965	C07-C08-N09-C16
3	A	801	965	C01-C07-C08-N09

There are no ring outliers.

1 monomer is involved in 1 short contact:

Mol	Chain	Res	Type	Clashes	Symm-Clashes
3	A	801	965	1	0

The following is a two-dimensional graphical depiction of Mogul quality analysis of bond lengths, bond angles, torsion angles, and ring geometry for all instances of the Ligand of Interest. In addition, ligands with molecular weight > 250 and outliers as shown on the validation Tables will also be included. For torsion angles, if less than 5% of the Mogul distribution of torsion angles is within 10 degrees of the torsion angle in question, then that torsion angle is considered an outlier. Any bond that is central to one or more torsion angles identified as an outlier by Mogul will be highlighted in the graph. For rings, the root-mean-square deviation (RMSD) between the ring in question and similar rings identified by Mogul is calculated over all ring torsion angles. If the average RMSD is greater than 60 degrees and the minimal RMSD between the ring in question and any Mogul-identified rings is also greater than 60 degrees, then that ring is considered an outlier. The outliers are highlighted in purple. The color gray indicates Mogul did not find sufficient equivalents in the CSD to analyse the geometry.



## 5.7 Other polymers [i](#)

There are no such residues in this entry.

## 5.8 Polymer linkage issues [i](#)

There are no chain breaks in this entry.

## 6 Fit of model and data [i](#)

### 6.1 Protein, DNA and RNA chains [i](#)

In the following table, the column labelled ‘#RSRZ> 2’ contains the number (and percentage) of RSRZ outliers, followed by percent RSRZ outliers for the chain as percentile scores relative to all X-ray entries and entries of similar resolution. The OWAB column contains the minimum, median, 95<sup>th</sup> percentile and maximum values of the occupancy-weighted average B-factor per residue. The column labelled ‘Q< 0.9’ lists the number of (and percentage) of residues with an average occupancy less than 0.9.

Mol	Chain	Analysed	<RSRZ>	#RSRZ>2		OWAB(Å <sup>2</sup> )	Q<0.9
1	A	220/283 (77%)	0.01	13 (5%)	22 21	13, 23, 51, 63	2 (0%)
2	B	15/25 (60%)	0.17	0	100 100	19, 24, 33, 41	0
All	All	235/308 (76%)	0.02	13 (5%)	25 24	13, 23, 51, 63	2 (0%)

All (13) RSRZ outliers are listed below:

Mol	Chain	Res	Type	RSRZ
1	A	445	VAL	4.2
1	A	429	ARG	4.0
1	A	248	GLU	3.4
1	A	430	LEU	3.2
1	A	237	PRO	3.2
1	A	253	ARG	2.5
1	A	319	PHE	2.3
1	A	250	ARG	2.3
1	A	399	HIS	2.2
1	A	249	ALA	2.2
1	A	432	ASP	2.2
1	A	434	LYS	2.0
1	A	428	LEU	2.0

### 6.2 Non-standard residues in protein, DNA, RNA chains [i](#)

There are no non-standard protein/DNA/RNA residues in this entry.

### 6.3 Carbohydrates [i](#)

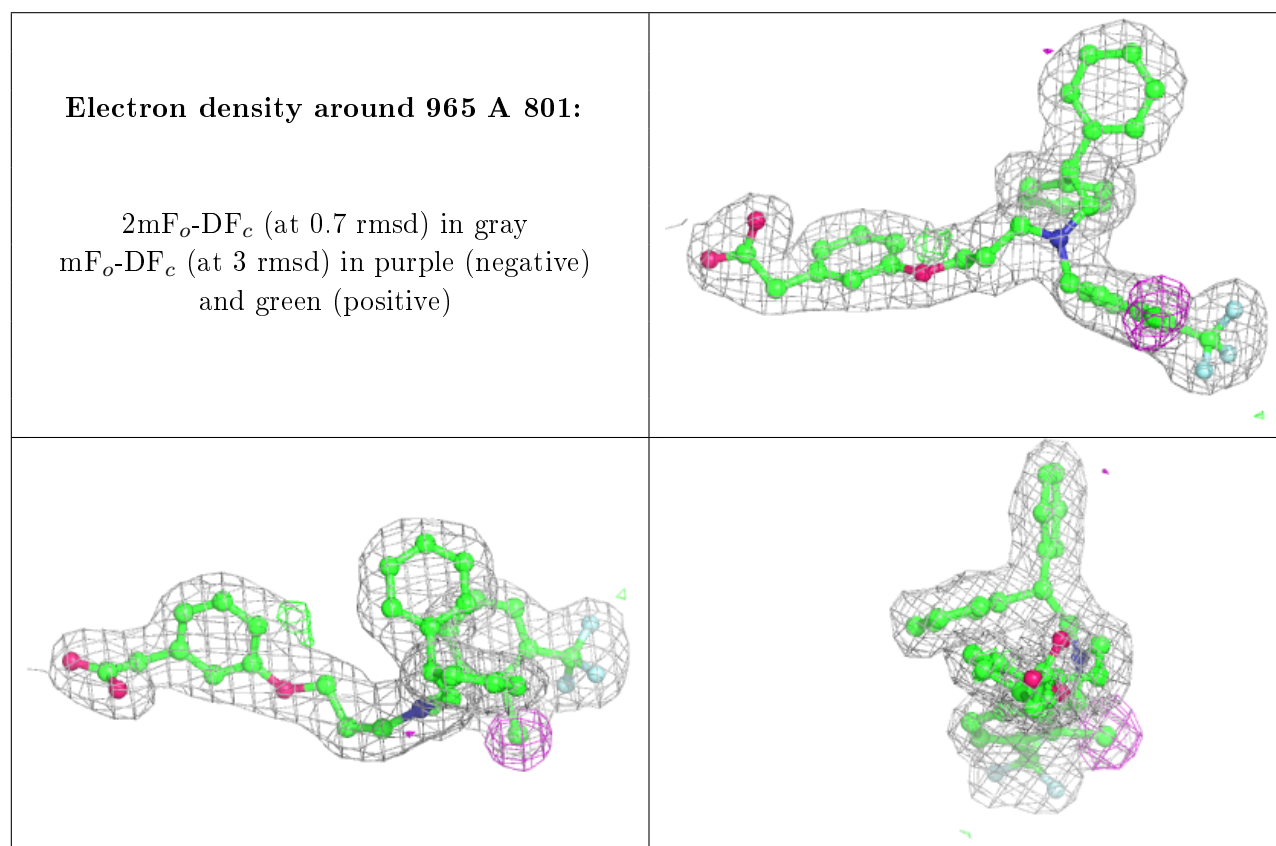
There are no carbohydrates in this entry.

## 6.4 Ligands [i](#)

In the following table, the Atoms column lists the number of modelled atoms in the group and the number defined in the chemical component dictionary. The B-factors column lists the minimum, median, 95<sup>th</sup> percentile and maximum values of B factors of atoms in the group. The column labelled 'Q< 0.9' lists the number of atoms with occupancy less than 0.9.

Mol	Type	Chain	Res	Atoms	RSCC	RSR	B-factors( $\text{\AA}^2$ )	Q<0.9
3	965	A	801	41/41	0.92	0.11	22,25,40,46	0
4	SO4	B	802	5/5	1.00	0.08	14,17,19,19	5

The following is a graphical depiction of the model fit to experimental electron density of all instances of the Ligand of Interest. In addition, ligands with molecular weight > 250 and outliers as shown on the geometry validation Tables will also be included. Each fit is shown from different orientation to approximate a three-dimensional view.



## 6.5 Other polymers [i](#)

There are no such residues in this entry.