



Full wwPDB X-ray Structure Validation Report ⓘ

May 13, 2020 – 11:27 am BST

PDB ID : 6IQL
Title : Crystal structure of dopamine receptor D4 bound to the subtype-selective ligand, L745870
Authors : Zhou, Y.; Cao, C.; Zhang, X.C.
Deposited on : 2018-11-08
Resolution : 3.50 Å(reported)

This is a Full wwPDB X-ray Structure Validation Report for a publicly released PDB entry.

We welcome your comments at validation@mail.wwpdb.org

A user guide is available at

<https://www.wwpdb.org/validation/2017/XrayValidationReportHelp>

with specific help available everywhere you see the ⓘ symbol.

The following versions of software and data (see [references ⓘ](#)) were used in the production of this report:

MolProbity : 4.02b-467
Mogul : 1.8.5 (274361), CSD as541be (2020)
Xtriage (Phenix) : 1.13
EDS : 2.11
buster-report : 1.1.7 (2018)
Percentile statistics : 20191225.v01 (using entries in the PDB archive December 25th 2019)
Refmac : 5.8.0158
CCP4 : 7.0.044 (Gargrove)
Ideal geometry (proteins) : Engh & Huber (2001)
Ideal geometry (DNA, RNA) : Parkinson et al. (1996)
Validation Pipeline (wwPDB-VP) : 2.11

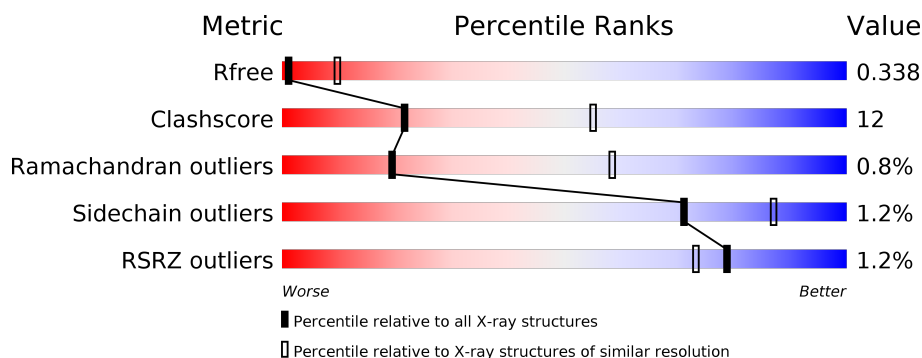
1 Overall quality at a glance ⓘ

The following experimental techniques were used to determine the structure:

X-RAY DIFFRACTION

The reported resolution of this entry is 3.50 Å.

Percentile scores (ranging between 0-100) for global validation metrics of the entry are shown in the following graphic. The table shows the number of entries on which the scores are based.



Metric	Whole archive (#Entries)	Similar resolution (#Entries, resolution range(Å))
R_{free}	130704	1659 (3.60-3.40)
Clashscore	141614	1036 (3.58-3.42)
Ramachandran outliers	138981	1005 (3.58-3.42)
Sidechain outliers	138945	1006 (3.58-3.42)
RSRZ outliers	127900	1559 (3.60-3.40)

The table below summarises the geometric issues observed across the polymeric chains and their fit to the electron density. The red, orange, yellow and green segments on the lower bar indicate the fraction of residues that contain outliers for ≥ 3 , 2, 1 and 0 types of geometric quality criteria respectively. A grey segment represents the fraction of residues that are not modelled. The numeric value for each fraction is indicated below the corresponding segment, with a dot representing fractions $\leq 5\%$. The upper red bar (where present) indicates the fraction of residues that have poor fit to the electron density. The numeric value is given above the bar.

Mol	Chain	Length	Quality of chain
1	A	396	<div> <div>2%</div> <div> <div></div> <div>67%</div> <div>18%</div> <div>•</div> <div>14%</div> </div> </div>
1	B	396	<div> <div>66%</div> <div>19%</div> <div>•</div> <div>14%</div> </div>

The following table lists non-polymeric compounds, carbohydrate monomers and non-standard residues in protein, DNA, RNA chains that are outliers for geometric or electron-density-fit criteria:

Mol	Type	Chain	Res	Chirality	Geometry	Clashes	Electron density
2	L74	A	1201	-	-	-	X
2	L74	B	1201	-	-	-	X

2 Entry composition

There are 2 unique types of molecules in this entry. The entry contains 5016 atoms, of which 0 are hydrogens and 0 are deuteriums.

In the tables below, the ZeroOcc column contains the number of atoms modelled with zero occupancy, the AltConf column contains the number of residues with at least one atom in alternate conformation and the Trace column contains the number of residues modelled with at most 2 atoms.

- Molecule 1 is a protein called D(4) dopamine receptor, Soluble cytochrome b562, D(4) dopamine receptor.

Mol	Chain	Residues	Atoms					ZeroOcc	AltConf	Trace
1	A	341	Total	C	N	O	S	0	0	0
			2468	1610	395	447	16			
1	B	340	Total	C	N	O	S	0	1	0
			2502	1633	402	449	18			

There are 34 discrepancies between the modelled and reference sequences:

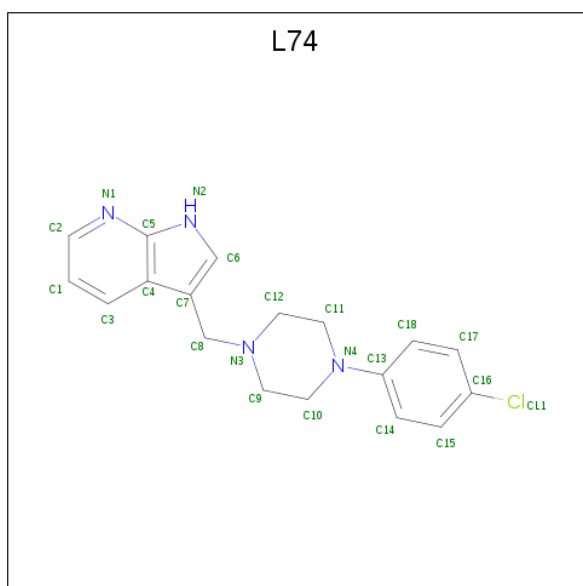
Chain	Residue	Modelled	Actual	Comment	Reference
A	13	ASP	-	expression tag	UNP P51436
A	14	TYR	-	expression tag	UNP P51436
A	15	LYS	-	expression tag	UNP P51436
A	16	ASP	-	expression tag	UNP P51436
A	17	ASP	-	expression tag	UNP P51436
A	18	ASP	-	expression tag	UNP P51436
A	19	ASP	-	expression tag	UNP P51436
A	20	LYS	-	expression tag	UNP P51436
A	21	GLU	-	expression tag	UNP P51436
A	22	PHE	-	expression tag	UNP P51436
A	121	TRP	PHE	engineered mutation	UNP P51436
A	181	ARG	CYS	engineered mutation	UNP P51436
A	201	ILE	PRO	engineered mutation	UNP P51436
A	1007	TRP	MET	engineered mutation	UNP P0ABE7
A	1102	ILE	HIS	engineered mutation	UNP P0ABE7
A	1106	LEU	-	linker	UNP P0ABE7
A	317	ALA	PRO	engineered mutation	UNP P51436
B	13	ASP	-	expression tag	UNP P51436
B	14	TYR	-	expression tag	UNP P51436
B	15	LYS	-	expression tag	UNP P51436
B	16	ASP	-	expression tag	UNP P51436
B	17	ASP	-	expression tag	UNP P51436
B	18	ASP	-	expression tag	UNP P51436
B	19	ASP	-	expression tag	UNP P51436

Continued on next page...

Continued from previous page...

Chain	Residue	Modelled	Actual	Comment	Reference
B	20	LYS	-	expression tag	UNP P51436
B	21	GLU	-	expression tag	UNP P51436
B	22	PHE	-	expression tag	UNP P51436
B	121	TRP	PHE	engineered mutation	UNP P51436
B	181	ARG	CYS	engineered mutation	UNP P51436
B	201	ILE	PRO	engineered mutation	UNP P51436
B	1007	TRP	MET	engineered mutation	UNP P0ABE7
B	1102	ILE	HIS	engineered mutation	UNP P0ABE7
B	1106	LEU	-	linker	UNP P0ABE7
B	317	ALA	PRO	engineered mutation	UNP P51436

- Molecule 2 is 3-{[4-(4-chlorophenyl)piperazin-1-yl]methyl}-1H-pyrrolo[2,3-b]pyridine (three-letter code: L74) (formula: C₁₈H₁₉ClN₄) (labeled as "Ligand of Interest" by author).



Mol	Chain	Residues	Atoms				ZeroOcc	AltConf
2	A	1	Total	C	Cl	N	0	0
			23	18	1	4		
2	B	1	Total	C	Cl	N	0	0
			23	18	1	4		

4 Data and refinement statistics

Property	Value	Source
Space group	P 21 2 21	Depositor
Cell constants a, b, c, α , β , γ	46.70 Å 142.00 Å 146.00 Å 90.00° 90.00° 90.00°	Depositor
Resolution (Å)	20.00 – 3.50 28.90 – 3.40	Depositor EDS
% Data completeness (in resolution range)	98.9 (20.00-3.50) 91.0 (28.90-3.40)	Depositor EDS
R_{merge}	0.23	Depositor
R_{sym}	(Not available)	Depositor
$\langle I/\sigma(I) \rangle$ ¹	0.19 (at 3.39 Å)	Xtriage
Refinement program	PHENIX 1.13_2998	Depositor
R, R_{free}	0.306 , 0.336 0.308 , 0.338	Depositor DCC
R_{free} test set	686 reflections (4.97%)	wwPDB-VP
Wilson B-factor (Å ²)	145.2	Xtriage
Anisotropy	0.403	Xtriage
Bulk solvent k_{sol} (e/Å ³), B_{sol} (Å ²)	0.24 , 150.7	EDS
L-test for twinning ²	$\langle L \rangle = 0.42$, $\langle L^2 \rangle = 0.25$	Xtriage
Estimated twinning fraction	0.037 for -h,l,k	Xtriage
F_o, F_c correlation	0.93	EDS
Total number of atoms	5016	wwPDB-VP
Average B, all atoms (Å ²)	182.0	wwPDB-VP

Xtriage's analysis on translational NCS is as follows: *The largest off-origin peak in the Patterson function is 7.26% of the height of the origin peak. No significant pseudotranslation is detected.*

¹Intensities estimated from amplitudes.

²Theoretical values of $\langle |L| \rangle$, $\langle L^2 \rangle$ for acentric reflections are 0.5, 0.333 respectively for untwinned datasets, and 0.375, 0.2 for perfectly twinned datasets.

5 Model quality [i](#)

5.1 Standard geometry [i](#)

Bond lengths and bond angles in the following residue types are not validated in this section: L74

The Z score for a bond length (or angle) is the number of standard deviations the observed value is removed from the expected value. A bond length (or angle) with $|Z| > 5$ is considered an outlier worth inspection. RMSZ is the root-mean-square of all Z scores of the bond lengths (or angles).

Mol	Chain	Bond lengths		Bond angles	
		RMSZ	$\# Z > 5$	RMSZ	$\# Z > 5$
1	A	0.30	0/2512	0.47	1/3445 (0.0%)
1	B	0.25	0/2551	0.41	0/3492
All	All	0.27	0/5063	0.44	1/6937 (0.0%)

There are no bond length outliers.

All (1) bond angle outliers are listed below:

Mol	Chain	Res	Type	Atoms	Z	Observed(°)	Ideal(°)
1	A	176	ASP	C-N-CD	5.67	140.31	128.40

There are no chirality outliers.

There are no planarity outliers.

5.2 Too-close contacts [i](#)

In the following table, the Non-H and H(model) columns list the number of non-hydrogen atoms and hydrogen atoms in the chain respectively. The H(added) column lists the number of hydrogen atoms added and optimized by MolProbity. The Clashes column lists the number of clashes within the asymmetric unit, whereas Symm-Clashes lists symmetry related clashes.

Mol	Chain	Non-H	H(model)	H(added)	Clashes	Symm-Clashes
1	A	2468	0	2423	49	0
1	B	2502	0	2484	72	0
2	A	23	0	0	1	0
2	B	23	0	0	3	0
All	All	5016	0	4907	118	0

The all-atom clashscore is defined as the number of clashes found per 1000 atoms (including hydrogen atoms). The all-atom clashscore for this structure is 12.

All (118) close contacts within the same asymmetric unit are listed below, sorted by their clash magnitude.

Atom-1	Atom-2	Interatomic distance (Å)	Clash overlap (Å)
1:B:161:VAL:O	1:B:187:TYR:OH	1.90	0.88
1:B:98:TRP:CH2	1:B:100:LEU:HD12	2.11	0.86
1:B:184:ASN:O	1:B:188:VAL:CG2	2.26	0.84
1:B:98:TRP:CE2	1:B:100:LEU:HB2	2.14	0.82
1:B:98:TRP:HH2	1:B:108:LEU:HD12	1.46	0.81
1:A:326:CYS:HB2	1:A:360:ASN:HB2	1.68	0.75
1:B:184:ASN:O	1:B:188:VAL:HG21	1.86	0.74
1:A:169:LEU:O	1:A:172:VAL:HG13	1.89	0.73
1:B:371:PHE:O	1:B:372:ASN:ND2	2.24	0.71
1:B:184:ASN:O	1:B:188:VAL:HG23	1.90	0.71
1:B:337:ARG:HB2	1:B:345:VAL:HG21	1.76	0.68
1:A:346:SER:HB2	1:A:349:LEU:HB2	1.78	0.64
1:B:1014:LEU:O	1:B:1018:GLU:HG2	1.98	0.64
1:B:207:TYR:OH	1:B:313:MET:O	2.13	0.63
1:A:112:ASP:OD2	1:A:358:TYR:OH	2.15	0.63
1:A:57:ALA:HB1	1:B:131:PHE:HZ	1.62	0.62
1:A:315:VAL:HG21	1:A:372:ASN:HB2	1.81	0.62
1:A:154:THR:O	1:A:158:SER:OG	2.15	0.61
1:B:130:ARG:HG3	1:B:316:LEU:HD21	1.83	0.61
1:B:98:TRP:CZ2	1:B:100:LEU:HB2	2.35	0.60
1:A:318:VAL:HG12	1:A:367:ILE:HD13	1.82	0.60
1:B:164:PRO:HB2	1:B:187:TYR:CE1	2.37	0.59
1:A:98:TRP:HB2	2:A:1201:L74:CL1	2.41	0.58
1:A:79:LEU:HD22	1:A:115:LEU:HD21	1.84	0.58
1:B:96:GLY:O	2:B:1201:L74:CL1	2.59	0.58
1:A:1004:GLU:HA	1:A:1007:TRP:HB2	1.84	0.58
1:B:346:SER:HB3	1:B:349:LEU:HD13	1.85	0.58
1:B:98:TRP:CZ2	1:B:100:LEU:HD12	2.38	0.57
1:A:1086:GLU:N	1:A:1086:GLU:OE1	2.37	0.57
1:A:176:ASP:CB	1:A:177:PRO:HD3	2.35	0.57
1:A:176:ASP:CB	1:A:177:PRO:CD	2.84	0.55
1:B:41:LEU:O	1:B:45:VAL:HG23	2.06	0.55
1:A:124:CYS:HA	1:A:203:MET:HE3	1.88	0.55
1:B:1030:LEU:HB3	1:B:1076:LEU:HD23	1.88	0.55
1:B:164:PRO:HG2	1:B:187:TYR:HE1	1.72	0.54
1:A:169:LEU:O	1:A:172:VAL:CG1	2.56	0.54
1:A:1013:ASN:HB2	1:A:1033:MET:HG3	1.89	0.54
1:A:159:ALA:O	1:A:163:SER:N	2.40	0.54
1:B:180:CYS:HB3	2:B:1201:L74:C15	2.39	0.53
1:A:346:SER:HB3	1:A:349:LEU:HD13	1.90	0.53

Continued on next page...

Continued from previous page...

Atom-1	Atom-2	Interatomic distance (Å)	Clash overlap (Å)
1:B:135:THR:HG23	1:B:136:VAL:HG23	1.91	0.53
1:B:62:LEU:HD13	1:B:375:PHE:HE1	1.75	0.52
1:B:117:THR:HG22	1:B:121:TRP:CD1	2.45	0.52
1:B:350:VAL:O	1:B:354:THR:OG1	2.22	0.52
1:B:164:PRO:HB2	1:B:187:TYR:CD1	2.45	0.52
1:A:337:ARG:CB	1:A:345:VAL:HG13	2.40	0.52
1:A:336:THR:O	1:A:340:CYS:N	2.40	0.52
1:A:109:MET:O	1:A:113:VAL:HG23	2.10	0.51
1:A:1039:ASP:O	1:A:1042:LYS:NZ	2.41	0.51
1:A:118:ALA:O	1:A:122:ASN:ND2	2.42	0.50
1:A:116:CYS:O	1:A:120:ILE:HG13	2.10	0.50
1:B:98:TRP:CE2	1:B:105:CYS:HB2	2.46	0.50
1:B:56:VAL:HA	1:B:62:LEU:HD12	1.93	0.50
1:A:57:ALA:HB1	1:B:131:PHE:CZ	2.43	0.50
1:B:200:CYS:SG	1:B:201:ILE:N	2.84	0.50
1:A:51:LEU:HA	1:A:54:VAL:HG12	1.94	0.49
1:B:207:TYR:O	1:B:210:THR:OG1	2.25	0.49
1:A:330:PHE:CE2	1:A:354:THR:HA	2.48	0.48
1:A:1026:VAL:HG21	1:A:1084:VAL:HG13	1.95	0.48
1:B:109:MET:O	1:B:113:VAL:HG23	2.14	0.48
1:A:199:PRO:O	1:A:203:MET:HG2	2.13	0.48
1:B:164:PRO:HG2	1:B:187:TYR:CE1	2.48	0.48
1:B:132:VAL:HA	1:B:135:THR:HG22	1.96	0.47
1:A:1006:ASN:HB3	1:A:1036:ALA:HB1	1.96	0.47
1:B:98:TRP:NE1	1:B:100:LEU:HB2	2.29	0.47
1:B:113:VAL:HG12	1:B:161:VAL:HG13	1.97	0.47
1:B:145:GLN:N	1:B:145:GLN:OE1	2.48	0.47
1:B:1086:GLU:OE1	1:B:1086:GLU:N	2.44	0.47
1:B:164:PRO:CG	1:B:187:TYR:HE1	2.27	0.47
1:A:87:LEU:HD22	1:A:108:LEU:HD11	1.97	0.47
1:B:102:PRO:HA	1:B:105:CYS:HB3	1.96	0.47
1:B:204:LEU:O	1:B:208:TRP:HD1	1.97	0.47
1:B:206:LEU:O	1:B:210:THR:HG23	2.15	0.47
1:A:337:ARG:CB	1:A:345:VAL:HG22	2.45	0.47
1:B:35:LEU:HD13	1:B:93:VAL:HG21	1.95	0.46
1:A:197:PHE:O	1:A:201:ILE:HG23	2.15	0.46
1:A:1030:LEU:HD13	1:A:1076:LEU:HA	1.97	0.46
1:B:117:THR:HG23	1:B:195:SER:HB3	1.98	0.46
1:B:1074:ASP:O	1:B:1078:LEU:HG	2.16	0.45
1:A:202:LEU:O	1:A:206:LEU:HG	2.17	0.45
1:A:201:ILE:HA	1:A:204:LEU:HD12	1.99	0.45

Continued on next page...

Continued from previous page...

Atom-1	Atom-2	Interatomic distance (Å)	Clash overlap (Å)
1:B:46:LEU:O	1:B:50[B]:SER:OG	2.28	0.45
1:B:182:LEU:HD13	1:B:188:VAL:HG13	1.99	0.45
1:B:1018:GLU:HA	1:B:1018:GLU:OE1	2.17	0.44
1:B:355:TRP:O	1:B:359:VAL:HG23	2.18	0.44
1:B:372:ASN:OD1	1:B:374:GLU:HB2	2.16	0.44
1:A:326:CYS:CB	1:A:360:ASN:HB2	2.43	0.44
1:B:164:PRO:CG	1:B:187:TYR:CE1	3.00	0.44
1:A:360:ASN:HA	1:A:363:LEU:HB2	2.00	0.43
1:A:42:ILE:HA	1:A:45:VAL:HG12	2.01	0.43
1:A:62:LEU:O	1:A:67:ASN:ND2	2.51	0.43
1:B:103:ARG:HH22	1:B:166:VAL:HA	1.83	0.43
1:B:207:TYR:CZ	1:B:211:PHE:HE1	2.36	0.43
1:B:98:TRP:CZ2	1:B:105:CYS:HA	2.53	0.43
1:A:1020:ALA:HB1	1:A:1025:GLN:HB2	2.00	0.43
1:A:39:VAL:HA	1:A:42:ILE:HG22	1.99	0.43
1:B:328:THR:HB	1:B:329:PRO:HD3	2.00	0.43
1:A:199:PRO:HA	1:A:202:LEU:HB2	2.01	0.43
1:B:324:LEU:HD23	1:B:324:LEU:HA	1.88	0.42
1:B:113:VAL:HG22	2:B:1201:L74:C1	2.49	0.42
1:B:62:LEU:HB3	1:B:67:ASN:HD22	1.83	0.42
1:B:79:LEU:HA	1:B:82:VAL:HG12	2.00	0.42
1:B:131:PHE:HA	1:B:210:THR:HG22	2.01	0.42
1:B:120:ILE:HA	1:B:123:LEU:HD12	2.02	0.41
1:A:196:PHE:CZ	1:A:328:THR:HA	2.55	0.41
1:A:191:SER:O	1:A:195:SER:HB3	2.21	0.41
1:B:121:TRP:CB	1:B:154:THR:HG23	2.51	0.41
1:A:50:SER:HB2	1:B:205:LEU:HD11	2.01	0.41
1:B:128:VAL:O	1:B:132:VAL:HG23	2.21	0.41
1:B:97:VAL:HG23	1:B:98:TRP:N	2.36	0.40
1:A:330:PHE:CD2	1:A:354:THR:HA	2.57	0.40
1:B:205:LEU:HD12	1:B:205:LEU:HA	1.88	0.40
1:B:1030:LEU:HA	1:B:1030:LEU:HD23	1.83	0.40
1:A:163:SER:O	1:A:165:VAL:N	2.55	0.40
1:B:98:TRP:NE1	1:B:105:CYS:HB2	2.36	0.40
1:B:1105:TYR:O	1:B:306:THR:HG23	2.21	0.40
1:B:130:ARG:HG3	1:B:316:LEU:HD11	2.03	0.40
1:B:66:THR:HG22	1:B:130:ARG:NH2	2.36	0.40

There are no symmetry-related clashes.

5.3 Torsion angles [i](#)

5.3.1 Protein backbone [i](#)

In the following table, the Percentiles column shows the percent Ramachandran outliers of the chain as a percentile score with respect to all X-ray entries followed by that with respect to entries of similar resolution.

The Analysed column shows the number of residues for which the backbone conformation was analysed, and the total number of residues.

Mol	Chain	Analysed	Favoured	Allowed	Outliers	Percentiles	
1	A	333/396 (84%)	308 (92%)	23 (7%)	2 (1%)	25	64
1	B	333/396 (84%)	317 (95%)	13 (4%)	3 (1%)	17	56
All	All	666/792 (84%)	625 (94%)	36 (5%)	5 (1%)	19	58

All (5) Ramachandran outliers are listed below:

Mol	Chain	Res	Type
1	A	176	ASP
1	B	372	ASN
1	B	98	TRP
1	A	346	SER
1	B	341	PRO

5.3.2 Protein sidechains [i](#)

In the following table, the Percentiles column shows the percent sidechain outliers of the chain as a percentile score with respect to all X-ray entries followed by that with respect to entries of similar resolution.

The Analysed column shows the number of residues for which the sidechain conformation was analysed, and the total number of residues.

Mol	Chain	Analysed	Rotameric	Outliers	Percentiles	
1	A	245/328 (75%)	241 (98%)	4 (2%)	62	83
1	B	254/328 (77%)	252 (99%)	2 (1%)	81	91
All	All	499/656 (76%)	493 (99%)	6 (1%)	71	87

All (6) residues with a non-rotameric sidechain are listed below:

Mol	Chain	Res	Type
1	A	90	TYR

Continued on next page...

Continued from previous page...

Mol	Chain	Res	Type
1	A	211	PHE
1	A	340	CYS
1	A	368	TYR
1	B	105	CYS
1	B	1007	TRP

Some sidechains can be flipped to improve hydrogen bonding and reduce clashes. There are no such sidechains identified.

5.3.3 RNA [i](#)

There are no RNA molecules in this entry.

5.4 Non-standard residues in protein, DNA, RNA chains [i](#)

There are no non-standard protein/DNA/RNA residues in this entry.

5.5 Carbohydrates [i](#)

There are no carbohydrates in this entry.

5.6 Ligand geometry [i](#)

2 ligands are modelled in this entry.

In the following table, the Counts columns list the number of bonds (or angles) for which Mogul statistics could be retrieved, the number of bonds (or angles) that are observed in the model and the number of bonds (or angles) that are defined in the Chemical Component Dictionary. The Link column lists molecule types, if any, to which the group is linked. The Z score for a bond length (or angle) is the number of standard deviations the observed value is removed from the expected value. A bond length (or angle) with $|Z| > 2$ is considered an outlier worth inspection. RMSZ is the root-mean-square of all Z scores of the bond lengths (or angles).

Mol	Type	Chain	Res	Link	Bond lengths			Bond angles		
					Counts	RMSZ	$\# Z > 2$	Counts	RMSZ	$\# Z > 2$
2	L74	A	1201	-	25,26,26	2.27	5 (20%)	28,36,36	1.96	8 (28%)
2	L74	B	1201	-	25,26,26	2.25	7 (28%)	28,36,36	1.73	6 (21%)

In the following table, the Chirals column lists the number of chiral outliers, the number of chiral centers analysed, the number of these observed in the model and the number defined in the

Chemical Component Dictionary. Similar counts are reported in the Torsion and Rings columns. '-' means no outliers of that kind were identified.

Mol	Type	Chain	Res	Link	Chirals	Torsions	Rings
2	L74	A	1201	-	-	4/7/18/18	0/4/4/4
2	L74	B	1201	-	-	4/7/18/18	0/4/4/4

All (12) bond length outliers are listed below:

Mol	Chain	Res	Type	Atoms	Z	Observed(Å)	Ideal(Å)
2	A	1201	L74	C8-N3	-8.81	1.30	1.47
2	B	1201	L74	C8-N3	-8.70	1.30	1.47
2	A	1201	L74	C12-N3	-3.54	1.37	1.46
2	B	1201	L74	C12-N3	-3.45	1.37	1.46
2	A	1201	L74	C9-N3	-2.72	1.39	1.46
2	B	1201	L74	C9-N3	-2.65	1.39	1.46
2	B	1201	L74	C4-C5	-2.57	1.36	1.43
2	A	1201	L74	C4-C5	-2.57	1.36	1.43
2	B	1201	L74	C8-C7	2.18	1.57	1.52
2	A	1201	L74	C1-C3	2.15	1.41	1.36
2	B	1201	L74	C1-C3	2.14	1.41	1.36
2	B	1201	L74	C13-N4	2.05	1.44	1.38

All (14) bond angle outliers are listed below:

Mol	Chain	Res	Type	Atoms	Z	Observed(°)	Ideal(°)
2	B	1201	L74	C2-N1-C5	5.61	123.52	116.60
2	A	1201	L74	C2-N1-C5	5.33	123.17	116.60
2	A	1201	L74	C7-C8-N3	-4.77	107.33	114.14
2	B	1201	L74	C1-C2-N1	-3.37	118.77	123.94
2	A	1201	L74	C1-C2-N1	-3.25	118.95	123.94
2	A	1201	L74	C9-N3-C12	3.16	115.95	108.83
2	A	1201	L74	C1-C3-C4	-2.70	117.15	120.89
2	B	1201	L74	C9-N3-C12	2.67	114.83	108.83
2	B	1201	L74	C7-C8-N3	-2.45	110.64	114.14
2	B	1201	L74	C1-C3-C4	-2.38	117.59	120.89
2	A	1201	L74	C12-C11-N4	2.24	115.06	110.70
2	A	1201	L74	C9-C10-N4	2.08	114.73	110.70
2	A	1201	L74	C18-C13-N4	-2.07	118.53	121.38
2	B	1201	L74	C12-C11-N4	2.06	114.71	110.70

There are no chirality outliers.

All (8) torsion outliers are listed below:

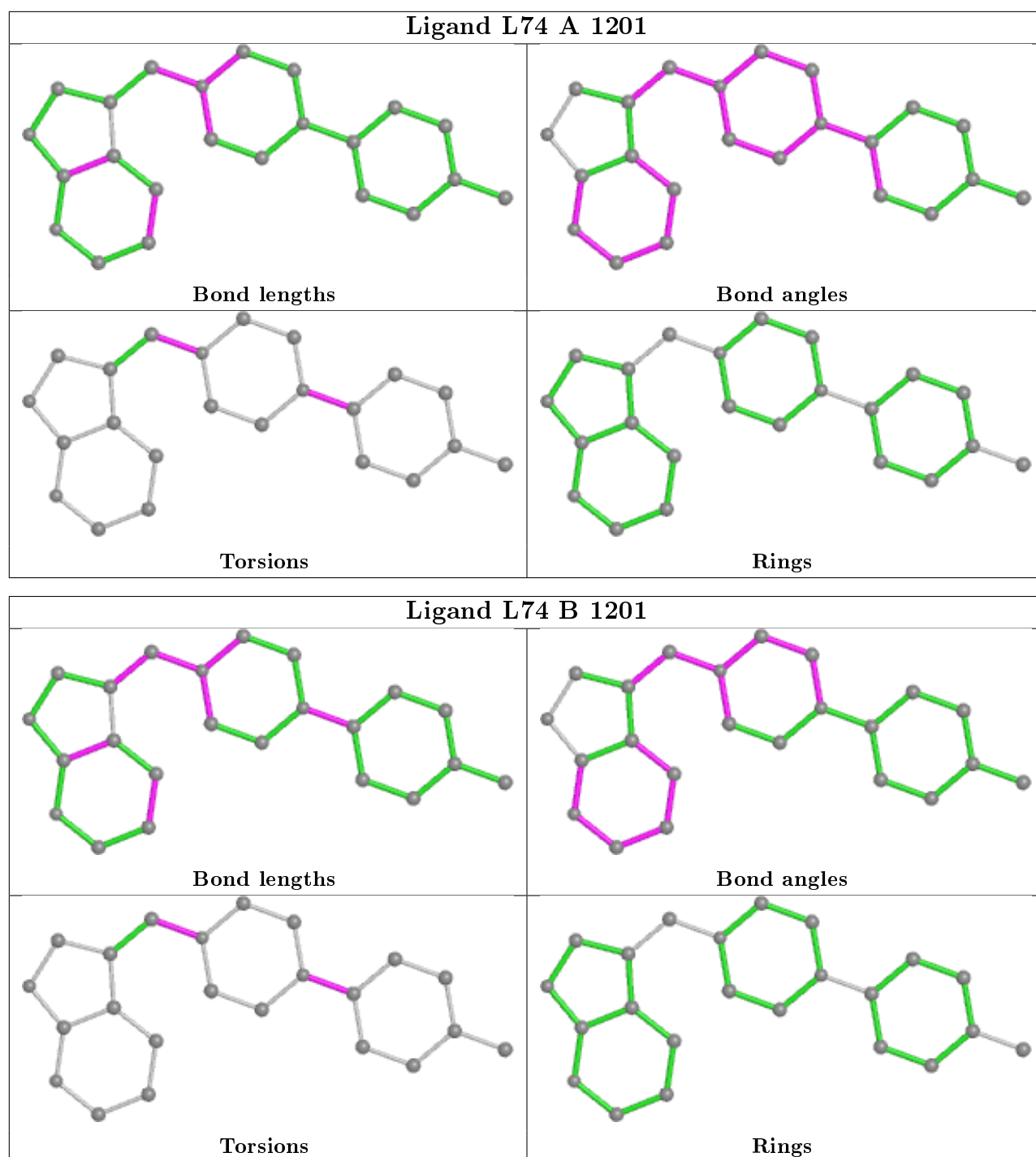
Mol	Chain	Res	Type	Atoms
2	B	1201	L74	C14-C13-N4-C10
2	B	1201	L74	C18-C13-N4-C10
2	A	1201	L74	C7-C8-N3-C9
2	A	1201	L74	C14-C13-N4-C10
2	A	1201	L74	C18-C13-N4-C10
2	A	1201	L74	C7-C8-N3-C12
2	B	1201	L74	C7-C8-N3-C9
2	B	1201	L74	C7-C8-N3-C12

There are no ring outliers.

2 monomers are involved in 4 short contacts:

Mol	Chain	Res	Type	Clashes	Symm-Clashes
2	A	1201	L74	1	0
2	B	1201	L74	3	0

The following is a two-dimensional graphical depiction of Mogul quality analysis of bond lengths, bond angles, torsion angles, and ring geometry for all instances of the Ligand of Interest. In addition, ligands with molecular weight > 250 and outliers as shown on the validation Tables will also be included. For torsion angles, if less than 5% of the Mogul distribution of torsion angles is within 10 degrees of the torsion angle in question, then that torsion angle is considered an outlier. Any bond that is central to one or more torsion angles identified as an outlier by Mogul will be highlighted in the graph. For rings, the root-mean-square deviation (RMSD) between the ring in question and similar rings identified by Mogul is calculated over all ring torsion angles. If the average RMSD is greater than 60 degrees and the minimal RMSD between the ring in question and any Mogul-identified rings is also greater than 60 degrees, then that ring is considered an outlier. The outliers are highlighted in purple. The color gray indicates Mogul did not find sufficient equivalents in the CSD to analyse the geometry.



5.7 Other polymers [i](#)

There are no such residues in this entry.

5.8 Polymer linkage issues [i](#)

There are no chain breaks in this entry.

6 Fit of model and data [i](#)

6.1 Protein, DNA and RNA chains [i](#)

In the following table, the column labelled ‘#RSRZ> 2’ contains the number (and percentage) of RSRZ outliers, followed by percent RSRZ outliers for the chain as percentile scores relative to all X-ray entries and entries of similar resolution. The OWAB column contains the minimum, median, 95th percentile and maximum values of the occupancy-weighted average B-factor per residue. The column labelled ‘Q< 0.9’ lists the number of (and percentage) of residues with an average occupancy less than 0.9.

Mol	Chain	Analysed	<RSRZ>	#RSRZ>2	OWAB(Å ²)	Q<0.9
1	A	341/396 (86%)	-0.30	7 (2%) 63 58	107, 184, 249, 290	0
1	B	340/396 (85%)	-0.38	1 (0%) 94 91	93, 169, 229, 273	0
All	All	681/792 (85%)	-0.34	8 (1%) 79 73	93, 177, 239, 290	0

All (8) RSRZ outliers are listed below:

Mol	Chain	Res	Type	RSRZ
1	A	342	ALA	3.5
1	B	81	ALA	3.2
1	A	370	ILE	2.9
1	A	170	ASN	2.6
1	A	371	PHE	2.5
1	A	99	LEU	2.3
1	A	186	ASP	2.1
1	A	1079	ALA	2.1

6.2 Non-standard residues in protein, DNA, RNA chains [i](#)

There are no non-standard protein/DNA/RNA residues in this entry.

6.3 Carbohydrates [i](#)

There are no carbohydrates in this entry.

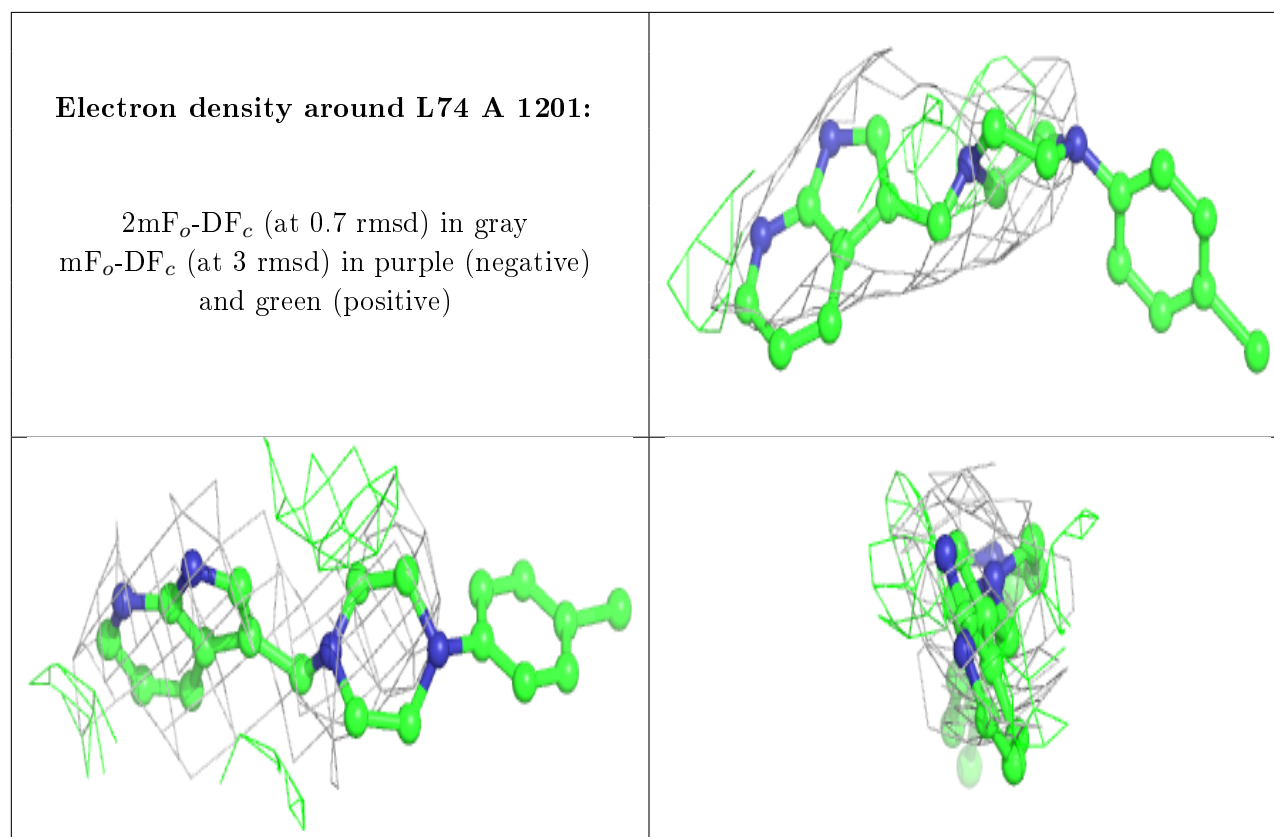
6.4 Ligands [i](#)

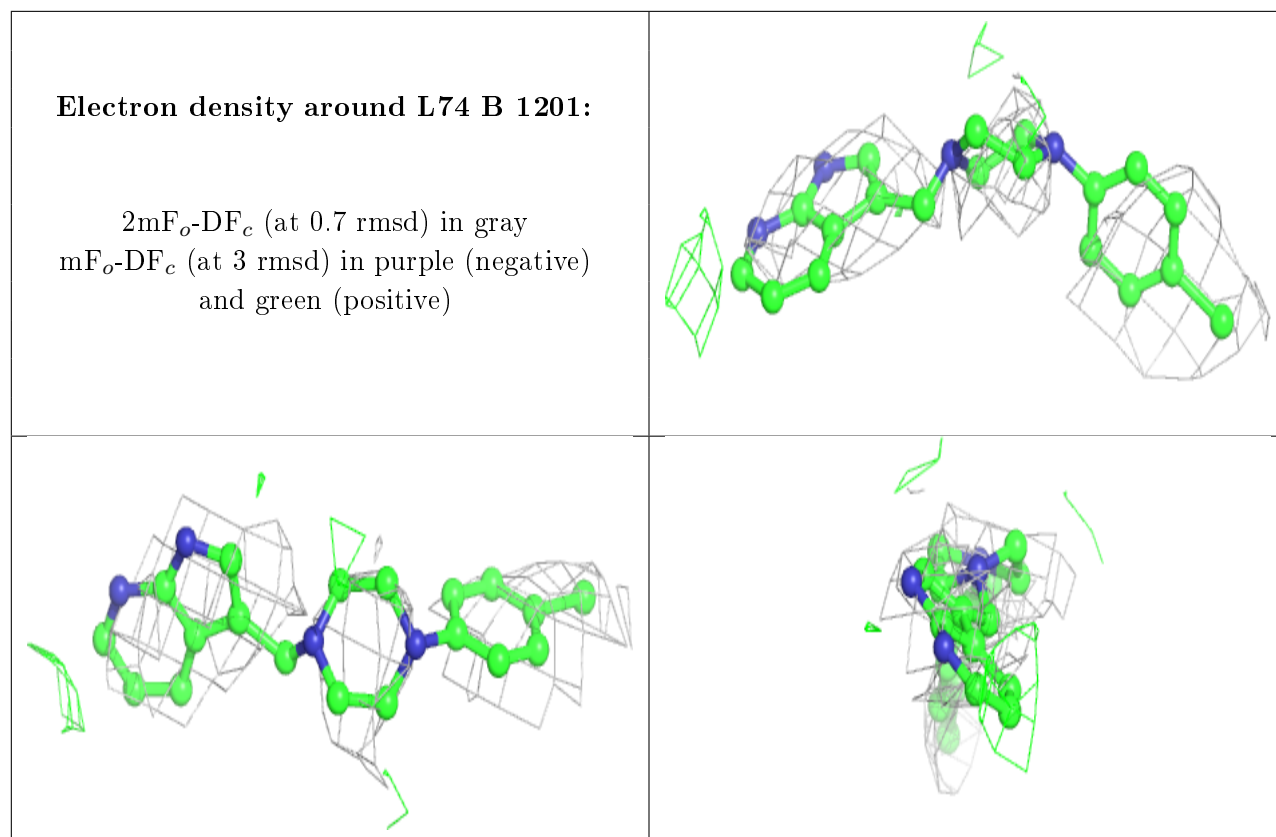
In the following table, the Atoms column lists the number of modelled atoms in the group and the number defined in the chemical component dictionary. The B-factors column lists the minimum,

median, 95th percentile and maximum values of B factors of atoms in the group. The column labelled 'Q<0.9' lists the number of atoms with occupancy less than 0.9.

Mol	Type	Chain	Res	Atoms	RSCC	RSR	B-factors(\AA^2)	Q<0.9
2	L74	A	1201	23/23	0.52	0.64	164,202,250,283	0
2	L74	B	1201	23/23	0.78	0.46	164,202,250,283	0

The following is a graphical depiction of the model fit to experimental electron density of all instances of the Ligand of Interest. In addition, ligands with molecular weight > 250 and outliers as shown on the geometry validation Tables will also be included. Each fit is shown from different orientation to approximate a three-dimensional view.





6.5 Other polymers [i](#)

There are no such residues in this entry.