



wwPDB X-ray Structure Validation Summary Report ⓘ

May 26, 2020 – 05:35 pm BST

PDB ID : 4IRE
Title : Crystal structure of GLIC with mutations at the loop C region
Authors : Chen, Q.; Pan, J.; Liang, Y.H.; Xu, Y.; Tang, P.
Deposited on : 2013-01-14
Resolution : 3.19 Å(reported)

This is a wwPDB X-ray Structure Validation Summary Report for a publicly released PDB entry.

We welcome your comments at validation@mail.wwpdb.org

A user guide is available at

<https://www.wwpdb.org/validation/2017/XrayValidationReportHelp>

with specific help available everywhere you see the ⓘ symbol.

The following versions of software and data (see [references ⓘ](#)) were used in the production of this report:

MolProbity	:	4.02b-467
Mogul	:	1.8.5 (274361), CSD as541be (2020)
Xtriage (Phenix)	:	1.13
EDS	:	2.11
buster-report	:	1.1.7 (2018)
Percentile statistics	:	20191225.v01 (using entries in the PDB archive December 25th 2019)
Refmac	:	5.8.0158
CCP4	:	7.0.044 (Gargrove)
Ideal geometry (proteins)	:	Engh & Huber (2001)
Ideal geometry (DNA, RNA)	:	Parkinson et al. (1996)
Validation Pipeline (wwPDB-VP)	:	2.11

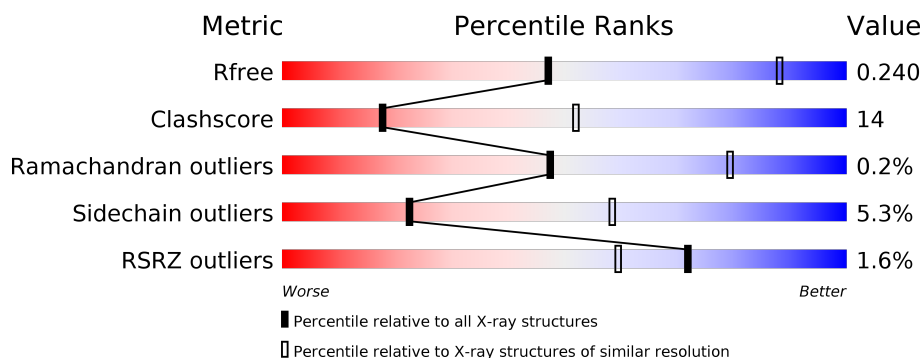
1 Overall quality at a glance

The following experimental techniques were used to determine the structure:

X-RAY DIFFRACTION

The reported resolution of this entry is 3.19 Å.

Percentile scores (ranging between 0-100) for global validation metrics of the entry are shown in the following graphic. The table shows the number of entries on which the scores are based.



Metric	Whole archive (#Entries)	Similar resolution (#Entries, resolution range(Å))
R_{free}	130704	1133 (3.20-3.20)
Clashscore	141614	1253 (3.20-3.20)
Ramachandran outliers	138981	1234 (3.20-3.20)
Sidechain outliers	138945	1233 (3.20-3.20)
RSRZ outliers	127900	1095 (3.20-3.20)

The table below summarises the geometric issues observed across the polymeric chains and their fit to the electron density. The red, orange, yellow and green segments on the lower bar indicate the fraction of residues that contain outliers for ≥ 3 , 2, 1 and 0 types of geometric quality criteria respectively. A grey segment represents the fraction of residues that are not modelled. The numeric value for each fraction is indicated below the corresponding segment, with a dot representing fractions $\leq 5\%$. The upper red bar (where present) indicates the fraction of residues that have poor fit to the electron density. The numeric value is given above the bar.

Mol	Chain	Length	Quality of chain
1	A	317	<div> <div>2%</div> <div>69%</div> <div>28%</div> <div>..</div> </div>
1	B	317	<div> <div>%</div> <div>70%</div> <div>27%</div> <div>..</div> </div>
1	C	317	<div> <div>3%</div> <div>69%</div> <div>28%</div> <div>..</div> </div>
1	D	317	<div> <div>%</div> <div>68%</div> <div>30%</div> <div>..</div> </div>
1	E	317	<div> <div>%</div> <div>71%</div> <div>26%</div> <div>..</div> </div>

The following table lists non-polymeric compounds, carbohydrate monomers and non-standard residues in protein, DNA, RNA chains that are outliers for geometric or electron-density-fit criteria:

Mol	Type	Chain	Res	Chirality	Geometry	Clashes	Electron density
2	LMD	E	404	-	-	-	X
3	PC1	A	402	-	-	-	X
3	PC1	B	401	-	-	-	X
3	PC1	C	403	-	-	-	X
3	PC1	C	404	-	-	-	X
3	PC1	D	502	-	-	-	X
3	PC1	E	405	-	-	-	X
3	PC1	E	406	-	-	-	X
4	OXL	E	409	-	-	X	-
5	ACT	B	406	-	-	-	X
5	ACT	E	411	-	-	X	-

2 Entry composition

There are 6 unique types of molecules in this entry. The entry contains 13440 atoms, of which 0 are hydrogens and 0 are deuteriums.

In the tables below, the ZeroOcc column contains the number of atoms modelled with zero occupancy, the AltConf column contains the number of residues with at least one atom in alternate conformation and the Trace column contains the number of residues modelled with at most 2 atoms.

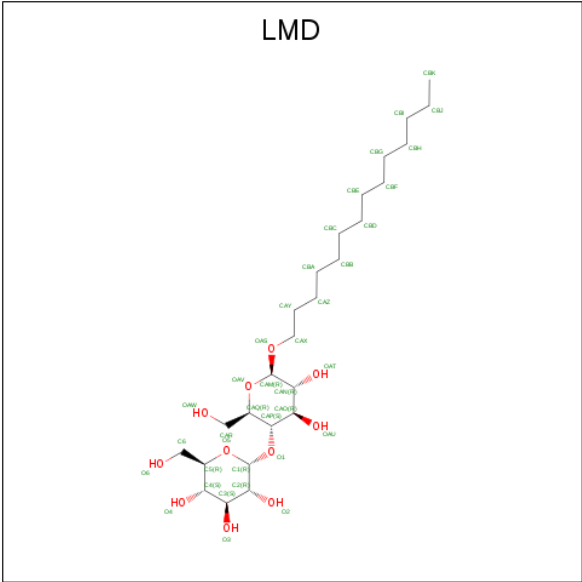
- Molecule 1 is a protein called Proton-gated ion channel.

Mol	Chain	Residues	Atoms					ZeroOcc	AltConf	Trace
1	A	312	Total	C	N	O	S	0	1	0
			2538	1672	409	452	5			
1	B	313	Total	C	N	O	S	0	1	0
			2542	1674	410	453	5			
1	C	311	Total	C	N	O	S	0	1	0
			2530	1667	408	451	4			
1	D	313	Total	C	N	O	S	0	1	0
			2542	1674	410	453	5			
1	E	312	Total	C	N	O	S	0	1	0
			2534	1669	409	452	4			

There are 15 discrepancies between the modelled and reference sequences:

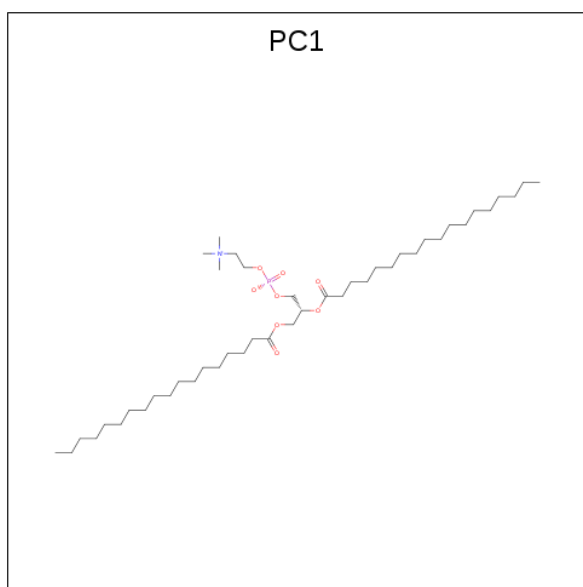
Chain	Residue	Modelled	Actual	Comment	Reference
A	91	ASN	ASP	ENGINEERED MUTATION	UNP Q7NDN8
A	177	GLN	GLU	ENGINEERED MUTATION	UNP Q7NDN8
A	178	ASN	ASP	ENGINEERED MUTATION	UNP Q7NDN8
B	91	ASN	ASP	ENGINEERED MUTATION	UNP Q7NDN8
B	177	GLN	GLU	ENGINEERED MUTATION	UNP Q7NDN8
B	178	ASN	ASP	ENGINEERED MUTATION	UNP Q7NDN8
C	91	ASN	ASP	ENGINEERED MUTATION	UNP Q7NDN8
C	177	GLN	GLU	ENGINEERED MUTATION	UNP Q7NDN8
C	178	ASN	ASP	ENGINEERED MUTATION	UNP Q7NDN8
D	91	ASN	ASP	ENGINEERED MUTATION	UNP Q7NDN8
D	177	GLN	GLU	ENGINEERED MUTATION	UNP Q7NDN8
D	178	ASN	ASP	ENGINEERED MUTATION	UNP Q7NDN8
E	91	ASN	ASP	ENGINEERED MUTATION	UNP Q7NDN8
E	177	GLN	GLU	ENGINEERED MUTATION	UNP Q7NDN8
E	178	ASN	ASP	ENGINEERED MUTATION	UNP Q7NDN8

- Molecule 2 is tetradecyl 4-O-alpha-D-glucopyranosyl-beta-D-glucopyranoside (three-letter code: LMD) (formula: C₂₆H₅₀O₁₁).



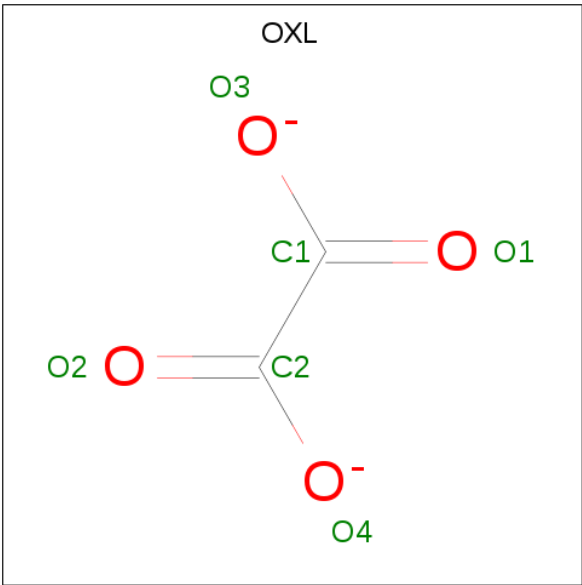
Mol	Chain	Residues	Atoms			ZeroOcc	AltConf
2	A	1	Total	C	O	0	0
			37	26	11		
2	C	1	Total	C	O	0	0
			37	26	11		
2	C	1	Total	C	O	0	0
			25	20	5		
2	E	1	Total	C	O	0	0
			21	19	2		
2	E	1	Total	C	O	0	0
			26	20	6		
2	E	1	Total	C	O	0	0
			37	26	11		

- Molecule 3 is 1,2-DIACYL-SN-GLYCERO-3-PHOSPHOCHOLINE (three-letter code: PC1) (formula: C₄₄H₈₈NO₈P).



Mol	Chain	Residues	Atoms					ZeroOcc	AltConf
3	A	1	Total	C	N	O	P	0	0
			37	27	1	8	1		
3	A	1	Total	C	N	O	P	0	0
			39	29	1	8	1		
3	B	1	Total	C	N	O	P	0	0
			39	29	1	8	1		
3	B	1	Total	C	N	O	P	0	0
			38	28	1	8	1		
3	C	1	Total	C	N	O	P	0	0
			38	28	1	8	1		
3	C	1	Total	C	N	O	P	0	0
			32	22	1	8	1		
3	D	1	Total	C	N	O	P	0	0
			37	27	1	8	1		
3	D	1	Total	C	N	O	P	0	0
			37	27	1	8	1		
3	E	1	Total	C	N	O	P	0	0
			38	28	1	8	1		
3	E	1	Total	C	N	O	P	0	0
			38	28	1	8	1		

- Molecule 4 is OXALATE ION (three-letter code: OXL) (formula: C₂O₄).



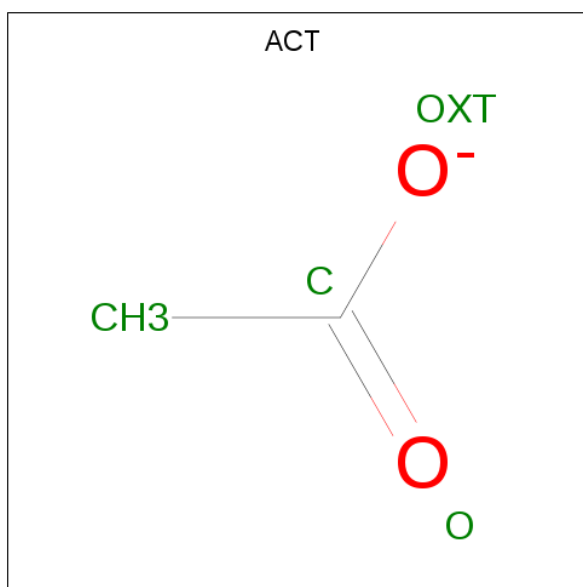
Mol	Chain	Residues	Atoms			ZeroOcc	AltConf
4	A	1	Total	C	O	0	0
			6	2	4		
4	A	1	Total	C	O	0	0
			6	2	4		
4	A	1	Total	C	O	0	0
			6	2	4		
4	B	1	Total	C	O	0	0
			6	2	4		
4	B	1	Total	C	O	0	0
			6	2	4		
4	C	1	Total	C	O	0	0
			6	2	4		
4	C	1	Total	C	O	0	0
			6	2	4		
4	D	1	Total	C	O	0	0
			6	2	4		
4	D	1	Total	C	O	0	0
			6	2	4		
4	D	1	Total	C	O	0	0
			6	2	4		
4	D	1	Total	C	O	0	0
			6	2	4		
4	E	1	Total	C	O	0	0
			6	2	4		
4	E	1	Total	C	O	0	0
			6	2	4		

Continued on next page...

Continued from previous page...

Mol	Chain	Residues	Atoms			ZeroOcc	AltConf
4	E	1	Total	C	O	0	0
			6	2	4		
4	E	1	Total	C	O	0	0
			6	2	4		
4	E	1	Total	C	O	0	0
			6	2	4		

- Molecule 5 is ACETATE ION (three-letter code: ACT) (formula: $C_2H_3O_2$).



Mol	Chain	Residues	Atoms			ZeroOcc	AltConf
5	A	1	Total	C	O	0	0
			4	2	2		
5	A	1	Total	C	O	0	0
			4	2	2		
5	B	1	Total	C	O	0	0
			4	2	2		
5	B	1	Total	C	O	0	0
			4	2	2		
5	C	1	Total	C	O	0	0
			4	2	2		
5	C	1	Total	C	O	0	0
			4	2	2		
5	D	1	Total	C	O	0	0
			4	2	2		
5	D	1	Total	C	O	0	0
			4	2	2		

Continued on next page...

Continued from previous page...

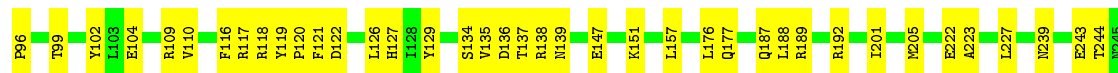
Mol	Chain	Residues	Atoms			ZeroOcc	AltConf
5	E	1	Total	C	O	0	0
			4	2	2		
5	E	1	Total	C	O	0	0
			4	2	2		

- Molecule 6 is water.

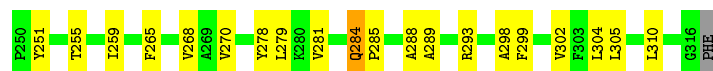
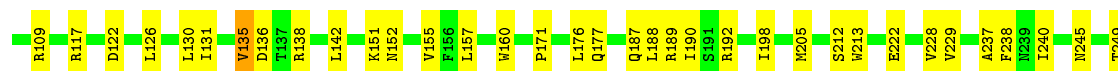
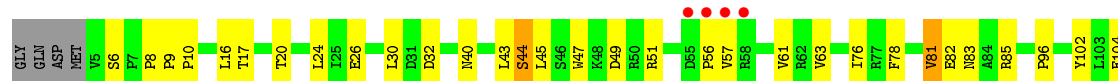
Mol	Chain	Residues	Atoms		ZeroOcc	AltConf
6	A	5	Total	O	0	0
			5	5		
6	B	12	Total	O	0	0
			12	12		
6	C	12	Total	O	0	0
			12	12		
6	D	12	Total	O	0	0
			12	12		
6	E	15	Total	O	0	0
			15	15		



• Molecule 1: Proton-gated ion channel



• Molecule 1: Proton-gated ion channel



4 Data and refinement statistics

Property	Value	Source
Space group	C 1 2 1	Depositor
Cell constants a, b, c, α , β , γ	182.03Å 133.62Å 161.43Å 90.00° 102.57° 90.00°	Depositor
Resolution (Å)	29.86 – 3.19 29.86 – 3.19	Depositor EDS
% Data completeness (in resolution range)	97.5 (29.86-3.19) 97.7 (29.86-3.19)	Depositor EDS
R_{merge}	0.07	Depositor
R_{sym}	(Not available)	Depositor
$\langle I/\sigma(I) \rangle$ ¹	1.76 (at 3.18Å)	Xtriage
Refinement program	PHENIX 1.8.1_1168	Depositor
R, R_{free}	0.204 , 0.243 0.204 , 0.240	Depositor DCC
R_{free} test set	1000 reflections (1.63%)	wwPDB-VP
Wilson B-factor (Å ²)	95.0	Xtriage
Anisotropy	0.259	Xtriage
Bulk solvent k_{sol} (e/Å ³), B_{sol} (Å ²)	0.30 , 62.8	EDS
L-test for twinning ²	$\langle L \rangle = 0.48$, $\langle L^2 \rangle = 0.31$	Xtriage
Estimated twinning fraction	No twinning to report.	Xtriage
F_o, F_c correlation	0.92	EDS
Total number of atoms	13440	wwPDB-VP
Average B, all atoms (Å ²)	88.0	wwPDB-VP

Xtriage's analysis on translational NCS is as follows: *The largest off-origin peak in the Patterson function is 4.31% of the height of the origin peak. No significant pseudotranslation is detected.*

¹Intensities estimated from amplitudes.

²Theoretical values of $\langle |L| \rangle$, $\langle L^2 \rangle$ for acentric reflections are 0.5, 0.333 respectively for untwinned datasets, and 0.375, 0.2 for perfectly twinned datasets.

5 Model quality [i](#)

5.1 Standard geometry [i](#)

Bond lengths and bond angles in the following residue types are not validated in this section: OXL, PC1, LMD, ACT

The Z score for a bond length (or angle) is the number of standard deviations the observed value is removed from the expected value. A bond length (or angle) with $|Z| > 5$ is considered an outlier worth inspection. RMSZ is the root-mean-square of all Z scores of the bond lengths (or angles).

Mol	Chain	Bond lengths		Bond angles	
		RMSZ	# $ Z > 5$	RMSZ	# $ Z > 5$
1	A	0.44	0/2609	0.64	0/3566
1	B	0.45	0/2613	0.61	0/3571
1	C	0.44	0/2601	0.64	0/3556
1	D	0.45	0/2613	0.62	0/3571
1	E	0.44	0/2605	0.63	0/3561
All	All	0.45	0/13041	0.63	0/17825

There are no bond length outliers.

There are no bond angle outliers.

There are no chirality outliers.

There are no planarity outliers.

5.2 Too-close contacts [i](#)

In the following table, the Non-H and H(model) columns list the number of non-hydrogen atoms and hydrogen atoms in the chain respectively. The H(added) column lists the number of hydrogen atoms added and optimized by MolProbity. The Clashes column lists the number of clashes within the asymmetric unit, whereas Symm-Clashes lists symmetry related clashes.

Mol	Chain	Non-H	H(model)	H(added)	Clashes	Symm-Clashes
1	A	2538	0	2566	57	0
1	B	2542	0	2569	55	0
1	C	2530	0	2557	56	0
1	D	2542	0	2569	70	0
1	E	2534	0	2560	59	0
2	A	37	0	50	4	0
2	C	62	0	88	12	0
2	E	84	0	119	13	0

Continued on next page...

Continued from previous page...

Mol	Chain	Non-H	H(model)	H(added)	Clashes	Symm-Clashes
3	A	76	0	100	18	0
3	B	77	0	102	16	0
3	C	70	0	88	15	0
3	D	74	0	96	11	0
3	E	76	0	100	8	0
4	A	18	0	0	0	0
4	B	12	0	0	0	0
4	C	12	0	0	1	0
4	D	30	0	0	1	0
4	E	30	0	0	4	0
5	A	8	0	6	1	0
5	B	8	0	6	0	0
5	C	8	0	6	2	0
5	D	8	0	6	0	0
5	E	8	0	6	5	0
6	A	5	0	0	0	0
6	B	12	0	0	0	0
6	C	12	0	0	0	0
6	D	12	0	0	1	0
6	E	15	0	0	2	0
All	All	13440	0	13594	367	0

The all-atom clashscore is defined as the number of clashes found per 1000 atoms (including hydrogen atoms). The all-atom clashscore for this structure is 14.

The worst 5 of 367 close contacts within the same asymmetric unit are listed below, sorted by their clash magnitude.

Atom-1	Atom-2	Interatomic distance (Å)	Clash overlap (Å)
3:A:403:PC1:H322	3:A:403:PC1:H241	1.34	1.06
1:E:131:ILE:HD13	5:E:411:ACT:CH3	1.88	1.01
1:E:131:ILE:CD1	5:E:411:ACT:H2	1.91	1.00
3:A:403:PC1:H261	3:A:403:PC1:H341	1.43	0.99
3:D:503:PC1:H321	3:D:503:PC1:H281	1.47	0.94

There are no symmetry-related clashes.

5.3 Torsion angles

5.3.1 Protein backbone

In the following table, the Percentiles column shows the percent Ramachandran outliers of the chain as a percentile score with respect to all X-ray entries followed by that with respect to entries of similar resolution.

The Analysed column shows the number of residues for which the backbone conformation was analysed, and the total number of residues.

Mol	Chain	Analysed	Favoured	Allowed	Outliers	Percentiles	
1	A	311/317 (98%)	302 (97%)	8 (3%)	1 (0%)	41	74
1	B	312/317 (98%)	303 (97%)	9 (3%)	0	100	100
1	C	310/317 (98%)	302 (97%)	7 (2%)	1 (0%)	41	74
1	D	312/317 (98%)	302 (97%)	9 (3%)	1 (0%)	41	74
1	E	311/317 (98%)	303 (97%)	8 (3%)	0	100	100
All	All	1556/1585 (98%)	1512 (97%)	41 (3%)	3 (0%)	47	79

All (3) Ramachandran outliers are listed below:

Mol	Chain	Res	Type
1	A	12	ALA
1	C	10	PRO
1	D	6	SER

5.3.2 Protein sidechains

In the following table, the Percentiles column shows the percent sidechain outliers of the chain as a percentile score with respect to all X-ray entries followed by that with respect to entries of similar resolution.

The Analysed column shows the number of residues for which the sidechain conformation was analysed, and the total number of residues.

Mol	Chain	Analysed	Rotameric	Outliers	Percentiles	
1	A	282/284 (99%)	263 (93%)	19 (7%)	16	50
1	B	282/284 (99%)	262 (93%)	20 (7%)	14	47
1	C	281/284 (99%)	265 (94%)	16 (6%)	20	56
1	D	282/284 (99%)	273 (97%)	9 (3%)	39	71
1	E	281/284 (99%)	270 (96%)	11 (4%)	32	67

Continued on next page...

Continued from previous page...

Mol	Chain	Analysed	Rotameric	Outliers	Percentiles
All	All	1408/1420 (99%)	1333 (95%)	75 (5%)	22 58

5 of 75 residues with a non-rotameric sidechain are listed below:

Mol	Chain	Res	Type
1	B	243	GLU
1	C	57	VAL
1	E	135	VAL
1	B	245	ASN
1	B	305	LEU

Some sidechains can be flipped to improve hydrogen bonding and reduce clashes. All (3) such sidechains are listed below:

Mol	Chain	Res	Type
1	A	193	GLN
1	B	276	GLN
1	E	245	ASN

5.3.3 RNA ⓘ

There are no RNA molecules in this entry.

5.4 Non-standard residues in protein, DNA, RNA chains ⓘ

There are no non-standard protein/DNA/RNA residues in this entry.

5.5 Carbohydrates ⓘ

There are no carbohydrates in this entry.

5.6 Ligand geometry ⓘ

43 ligands are modelled in this entry.

In the following table, the Counts columns list the number of bonds (or angles) for which Mogul statistics could be retrieved, the number of bonds (or angles) that are observed in the model and the number of bonds (or angles) that are defined in the Chemical Component Dictionary. The Link column lists molecule types, if any, to which the group is linked. The Z score for a bond length (or angle) is the number of standard deviations the observed value is removed from the

expected value. A bond length (or angle) with $|Z| > 2$ is considered an outlier worth inspection. RMSZ is the root-mean-square of all Z scores of the bond lengths (or angles).

Mol	Type	Chain	Res	Link	Bond lengths			Bond angles		
					Counts	RMSZ	$\# Z > 2$	Counts	RMSZ	$\# Z > 2$
4	OXL	D	505	-	0,5,5	0.00	-	0,6,6	0.00	-
3	PC1	A	403	-	38,38,53	1.19	6 (15%)	44,46,61	1.31	7 (15%)
5	ACT	C	407	-	1,3,3	2.49	1 (100%)	0,3,3	0.00	-
2	LMD	E	401	-	21,21,38	0.92	0	21,22,49	1.25	2 (9%)
3	PC1	E	405	-	37,37,53	1.16	7 (18%)	43,45,61	1.11	4 (9%)
4	OXL	D	507	-	0,5,5	0.00	-	0,6,6	0.00	-
3	PC1	A	402	-	36,36,53	1.21	7 (19%)	42,44,61	1.16	3 (7%)
5	ACT	E	412	-	1,3,3	1.67	0	0,3,3	0.00	-
5	ACT	D	508	-	1,3,3	1.99	0	0,3,3	0.00	-
4	OXL	C	406	-	0,5,5	0.00	-	0,6,6	0.00	-
5	ACT	E	411	-	1,3,3	1.79	0	0,3,3	0.00	-
3	PC1	C	403	-	37,37,53	1.15	7 (18%)	43,45,61	1.18	4 (9%)
4	OXL	A	405	-	0,5,5	0.00	-	0,6,6	0.00	-
2	LMD	A	401	-	38,38,38	1.05	1 (2%)	49,49,49	1.70	6 (12%)
5	ACT	B	406	-	1,3,3	1.99	0	0,3,3	0.00	-
4	OXL	E	408	-	0,5,5	0.00	-	0,6,6	0.00	-
5	ACT	A	407	-	1,3,3	1.88	0	0,3,3	0.00	-
3	PC1	B	402	-	37,37,53	1.16	6 (16%)	43,45,61	1.08	5 (11%)
4	OXL	E	410	-	0,5,5	0.00	-	0,6,6	0.00	-
5	ACT	A	408	-	1,3,3	2.18	1 (100%)	0,3,3	0.00	-
4	OXL	A	406	-	0,5,5	0.00	-	0,6,6	0.00	-
5	ACT	D	509	-	1,3,3	1.49	0	0,3,3	0.00	-
2	LMD	E	402	-	26,26,38	0.97	1 (3%)	31,31,49	1.91	5 (16%)
2	LMD	C	402	-	25,25,38	1.17	3 (12%)	28,29,49	1.66	3 (10%)
4	OXL	D	501	-	0,5,5	0.00	-	0,6,6	0.00	-
5	ACT	B	405	-	1,3,3	1.53	0	0,3,3	0.00	-
4	OXL	C	405	-	0,5,5	0.00	-	0,6,6	0.00	-
4	OXL	D	504	-	0,5,5	0.00	-	0,6,6	0.00	-
3	PC1	C	404	-	31,31,53	1.24	6 (19%)	37,39,61	1.33	2 (5%)
4	OXL	A	404	-	0,5,5	0.00	-	0,6,6	0.00	-
2	LMD	E	404	-	38,38,38	1.16	1 (2%)	49,49,49	1.73	9 (18%)
4	OXL	E	403	-	0,5,5	0.00	-	0,6,6	0.00	-
4	OXL	D	506	-	0,5,5	0.00	-	0,6,6	0.00	-
5	ACT	C	408	-	1,3,3	2.09	1 (100%)	0,3,3	0.00	-
3	PC1	B	401	-	38,38,53	1.15	7 (18%)	44,46,61	1.16	4 (9%)
4	OXL	B	403	-	0,5,5	0.00	-	0,6,6	0.00	-
2	LMD	C	401	-	38,38,38	1.09	1 (2%)	49,49,49	1.72	11 (22%)

Mol	Type	Chain	Res	Link	Bond lengths			Bond angles		
					Counts	RMSZ	# Z > 2	Counts	RMSZ	# Z > 2
4	OXL	E	409	-	0,5,5	0.00	-	0,6,6	0.00	-
4	OXL	E	407	-	0,5,5	0.00	-	0,6,6	0.00	-
4	OXL	B	404	-	0,5,5	0.00	-	0,6,6	0.00	-
3	PC1	E	406	-	37,37,53	1.16	7 (18%)	43,45,61	1.21	5 (11%)
3	PC1	D	503	-	36,36,53	1.21	6 (16%)	42,44,61	1.08	3 (7%)
3	PC1	D	502	-	36,36,53	1.14	7 (19%)	42,44,61	1.22	2 (4%)

In the following table, the Chirals column lists the number of chiral outliers, the number of chiral centers analysed, the number of these observed in the model and the number defined in the Chemical Component Dictionary. Similar counts are reported in the Torsion and Rings columns. '-' means no outliers of that kind were identified.

Mol	Type	Chain	Res	Link	Chirals	Torsions	Rings
4	OXL	D	505	-	-	0/0/4/4	-
3	PC1	A	403	-	-	18/42/42/57	-
2	LMD	E	401	-	-	8/15/23/63	0/1/1/2
3	PC1	E	405	-	-	20/41/41/57	-
4	OXL	D	507	-	-	0/0/4/4	-
3	PC1	A	402	-	-	20/40/40/57	-
4	OXL	C	406	-	-	0/0/4/4	-
3	PC1	C	403	-	-	22/41/41/57	-
4	OXL	A	405	-	-	0/0/4/4	-
2	LMD	A	401	-	-	10/23/63/63	0/2/2/2
4	OXL	E	408	-	-	0/0/4/4	-
3	PC1	B	402	-	-	22/41/41/57	-
4	OXL	E	410	-	-	0/0/4/4	-
4	OXL	A	406	-	-	0/0/4/4	-
2	LMD	E	402	-	-	12/17/37/63	0/1/1/2
2	LMD	C	402	-	-	8/17/33/63	0/1/1/2
4	OXL	D	501	-	-	0/0/4/4	-
4	OXL	C	405	-	-	0/0/4/4	-
4	OXL	D	504	-	-	0/0/4/4	-
3	PC1	C	404	-	-	20/35/35/57	-
4	OXL	A	404	-	-	0/0/4/4	-
2	LMD	E	404	-	-	15/23/63/63	0/2/2/2
4	OXL	E	403	-	-	0/0/4/4	-
4	OXL	D	506	-	-	0/0/4/4	-
3	PC1	B	401	-	-	23/42/42/57	-
4	OXL	B	403	-	-	0/0/4/4	-

Continued on next page...

Continued from previous page...

Mol	Type	Chain	Res	Link	Chirals	Torsions	Rings
2	LMD	C	401	-	-	14/23/63/63	0/2/2/2
4	OXL	E	409	-	-	0/0/4/4	-
4	OXL	E	407	-	-	0/0/4/4	-
4	OXL	B	404	-	-	0/0/4/4	-
3	PC1	E	406	-	-	25/41/41/57	-
3	PC1	D	503	-	-	15/40/40/57	-
3	PC1	D	502	-	-	17/40/40/57	-

The worst 5 of 76 bond length outliers are listed below:

Mol	Chain	Res	Type	Atoms	Z	Observed(Å)	Ideal(Å)
2	E	404	LMD	OAS-CAM	3.42	1.46	1.40
3	A	403	PC1	O31-C3	-3.24	1.37	1.45
3	D	503	PC1	O21-C2	-3.18	1.38	1.46
3	A	403	PC1	O21-C2	-3.16	1.38	1.46
3	E	405	PC1	O21-C2	-3.16	1.38	1.46

The worst 5 of 75 bond angle outliers are listed below:

Mol	Chain	Res	Type	Atoms	Z	Observed(°)	Ideal(°)
2	A	401	LMD	OAS-CAM-CAN	8.07	120.90	108.30
2	E	402	LMD	OAS-CAM-CAN	6.96	119.17	108.30
2	C	401	LMD	OAS-CAM-CAN	6.77	118.87	108.30
2	C	402	LMD	OAS-CAM-CAN	6.76	118.86	108.30
2	E	404	LMD	OAS-CAM-CAN	5.94	117.58	108.30

There are no chirality outliers.

5 of 269 torsion outliers are listed below:

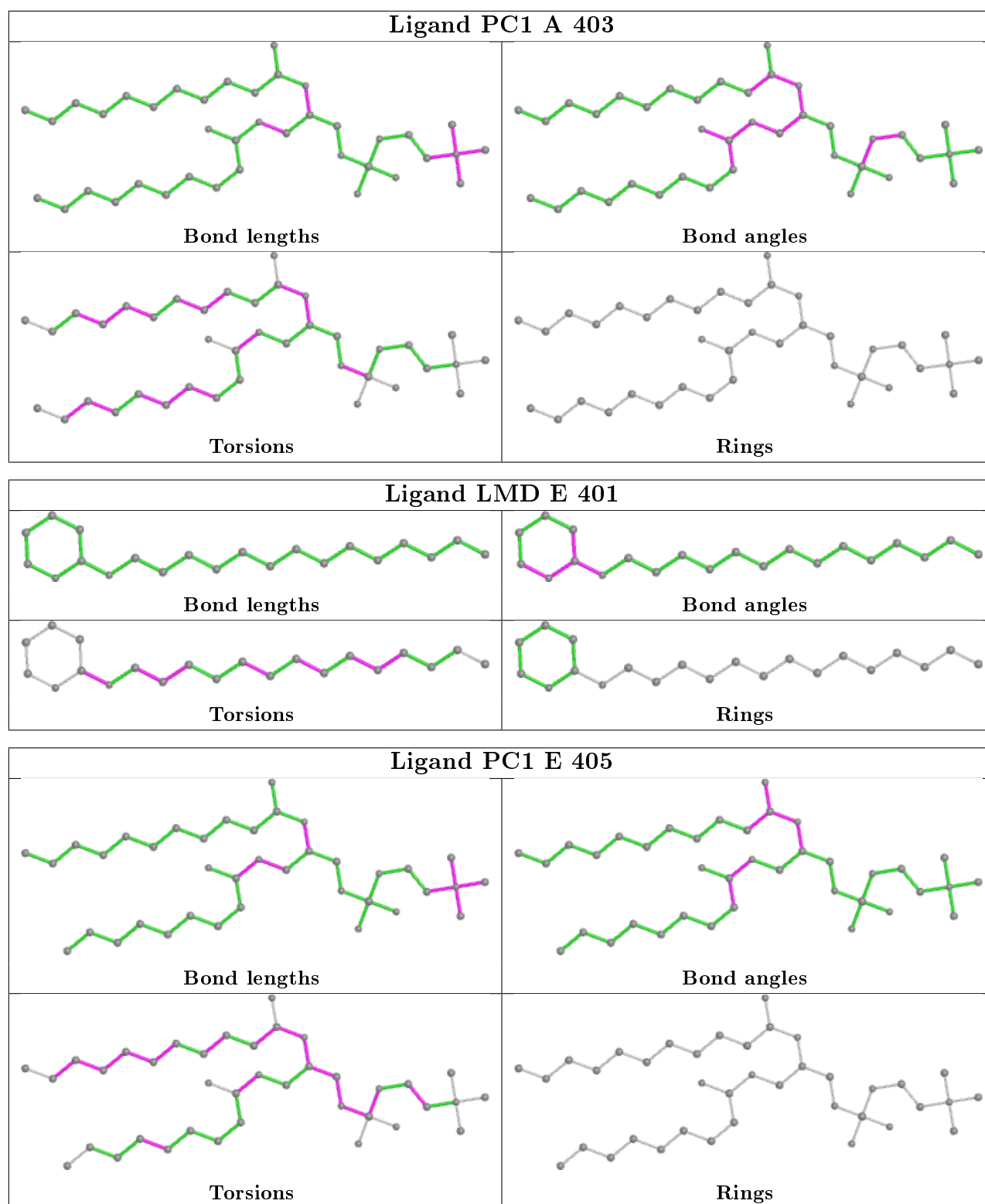
Mol	Chain	Res	Type	Atoms
3	A	403	PC1	C1-O11-P-O12
3	A	403	PC1	C1-O11-P-O14
3	A	403	PC1	O22-C21-O21-C2
3	A	403	PC1	C22-C21-O21-C2
3	A	403	PC1	O32-C31-O31-C3

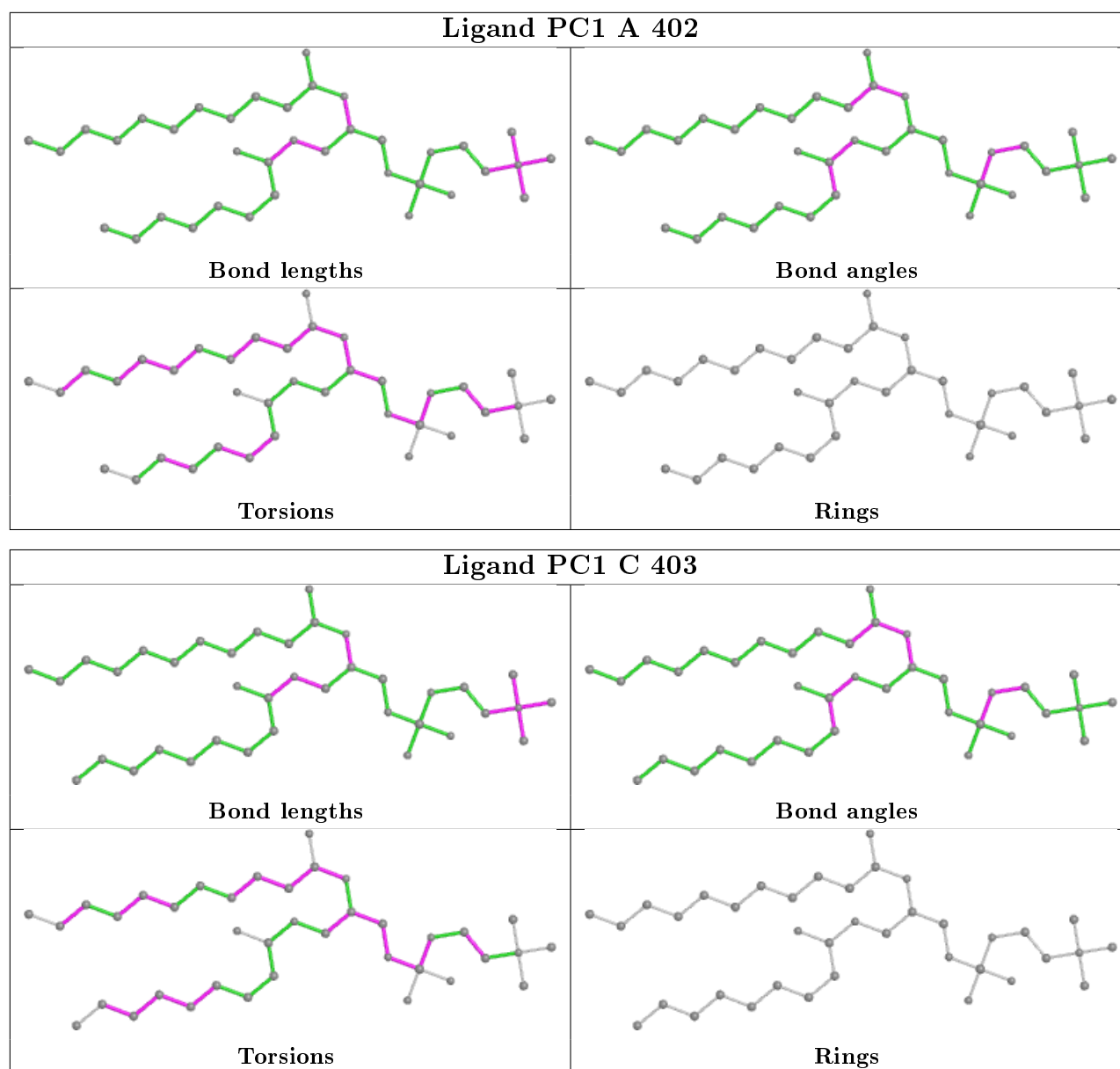
There are no ring outliers.

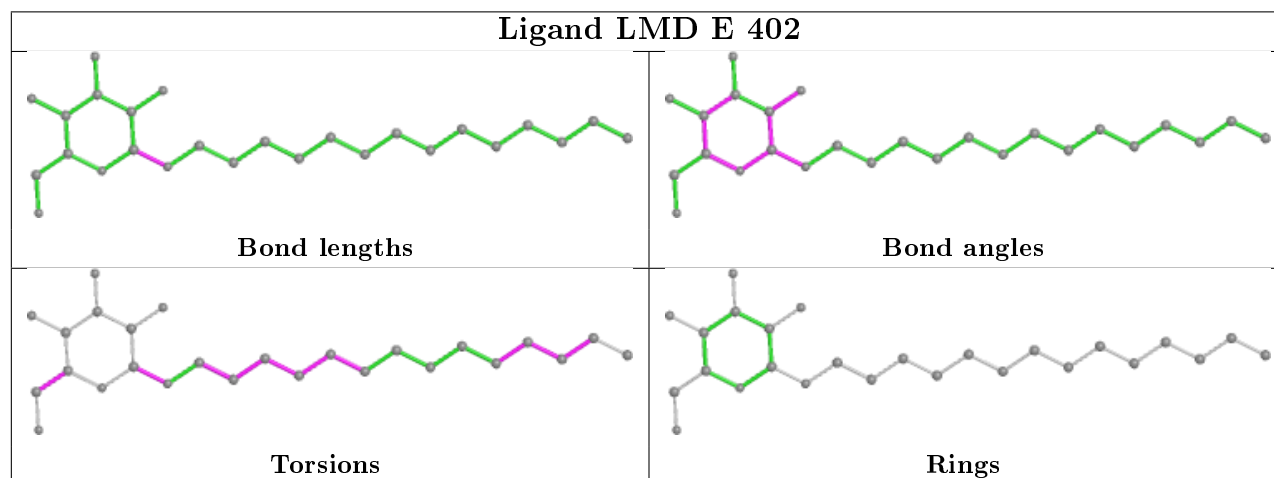
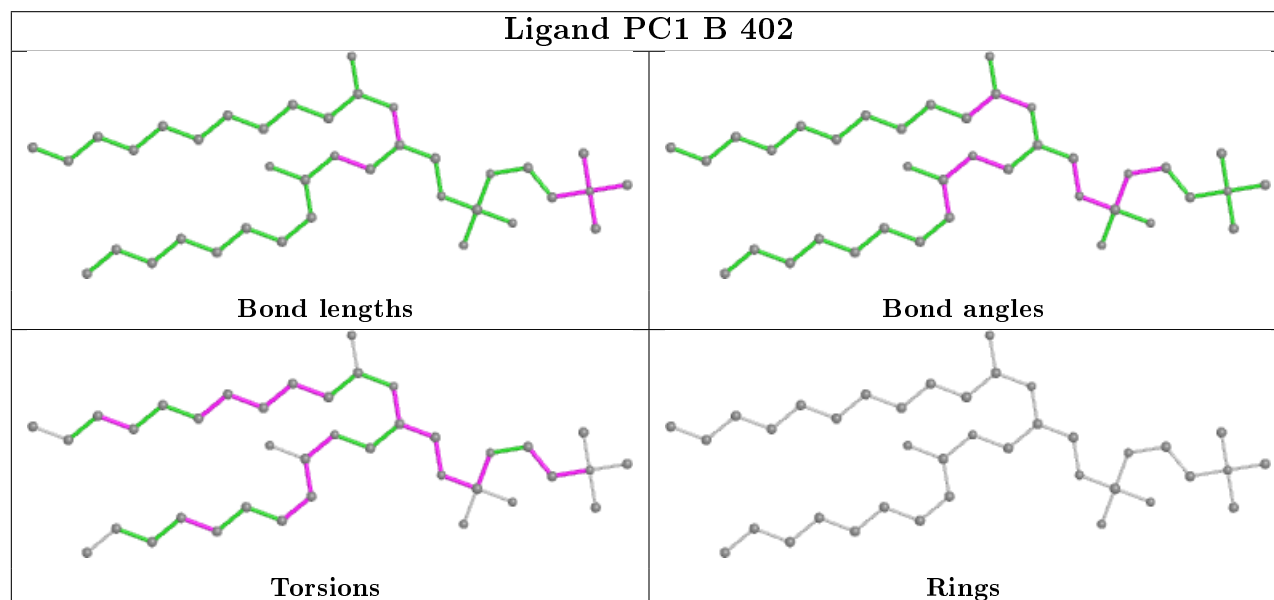
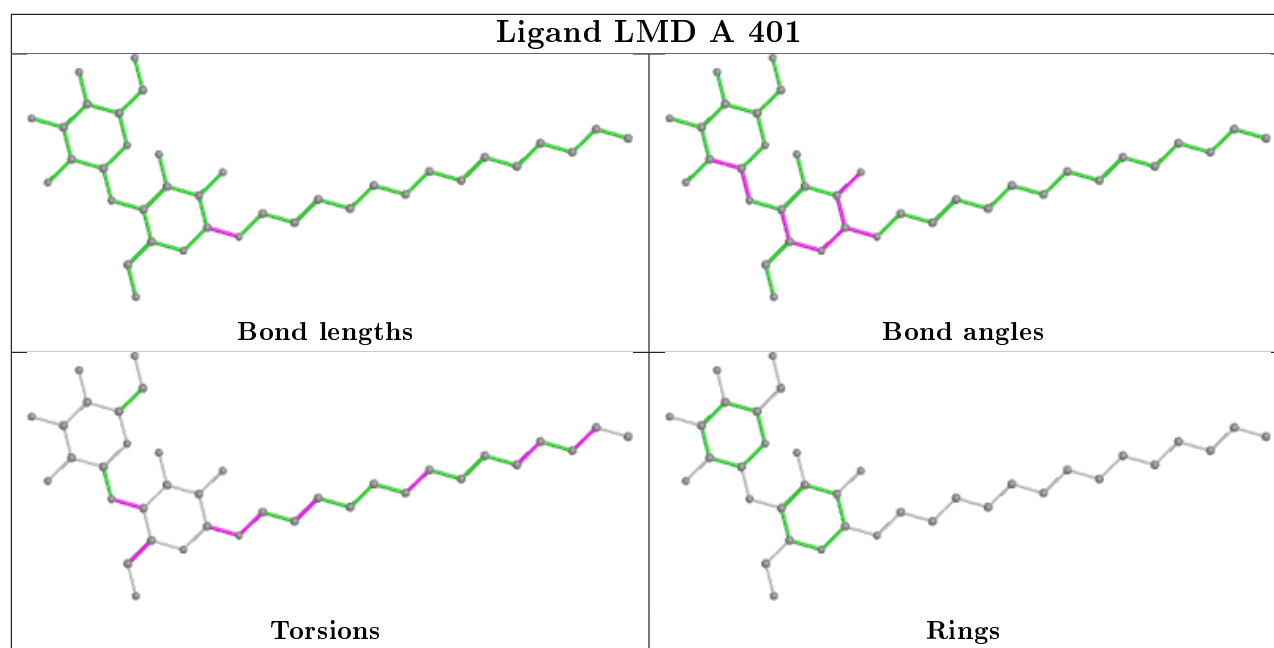
24 monomers are involved in 107 short contacts:

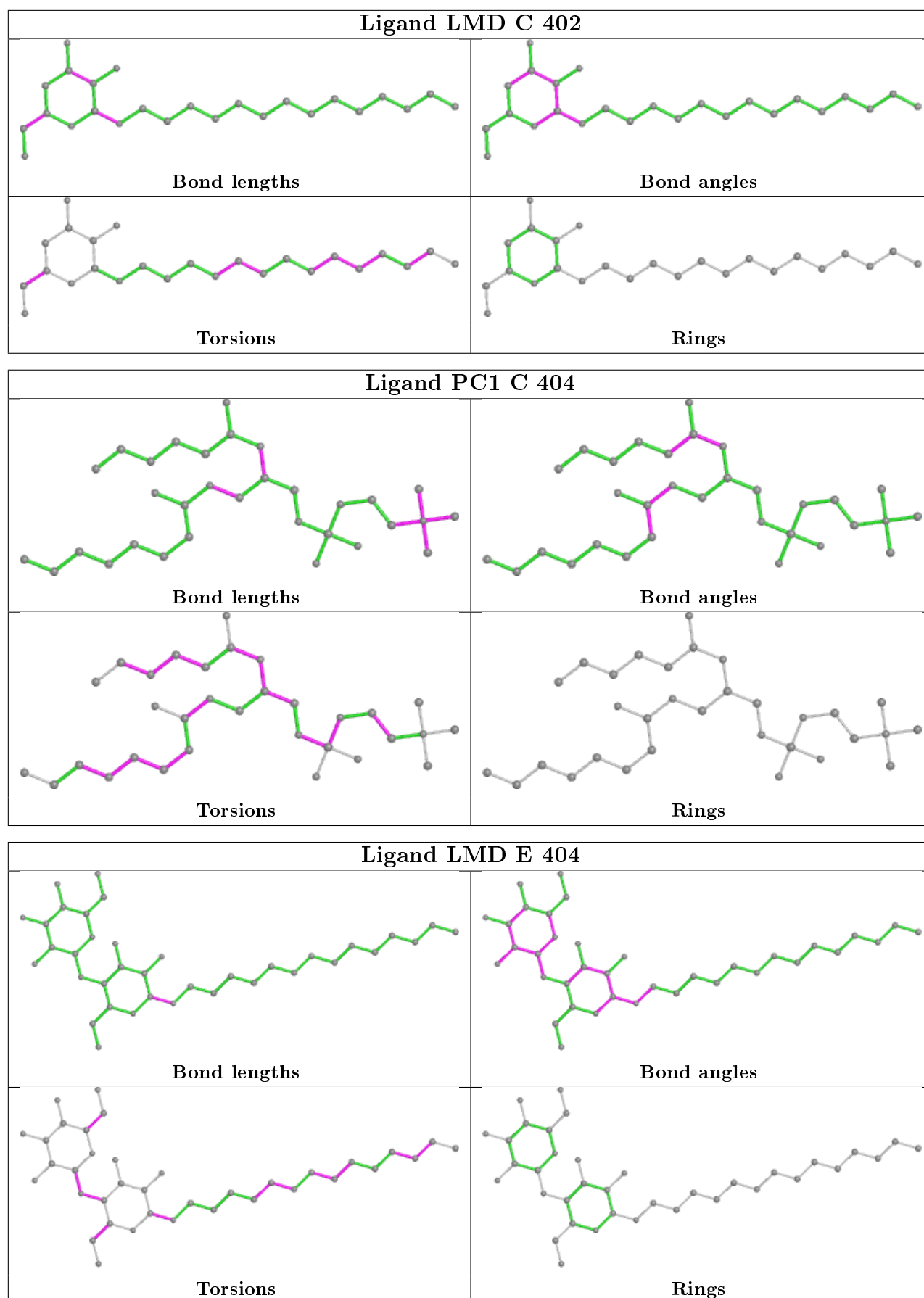
Mol	Chain	Res	Type	Clashes	Symm-Clashes
3	A	403	PC1	16	0
5	C	407	ACT	1	0
2	E	401	LMD	7	0
3	E	405	PC1	4	0
3	A	402	PC1	2	0
5	E	411	ACT	5	0
3	C	403	PC1	10	0
2	A	401	LMD	4	0
4	E	408	OXL	1	0
5	A	407	ACT	1	0
3	B	402	PC1	7	0
2	E	402	LMD	3	0
2	C	402	LMD	5	0
4	C	405	OXL	1	0
4	D	504	OXL	1	0
3	C	404	PC1	5	0
2	E	404	LMD	5	0
5	C	408	ACT	1	0
3	B	401	PC1	9	0
2	C	401	LMD	8	0
4	E	409	OXL	3	0
3	E	406	PC1	4	0
3	D	503	PC1	5	0
3	D	502	PC1	6	0

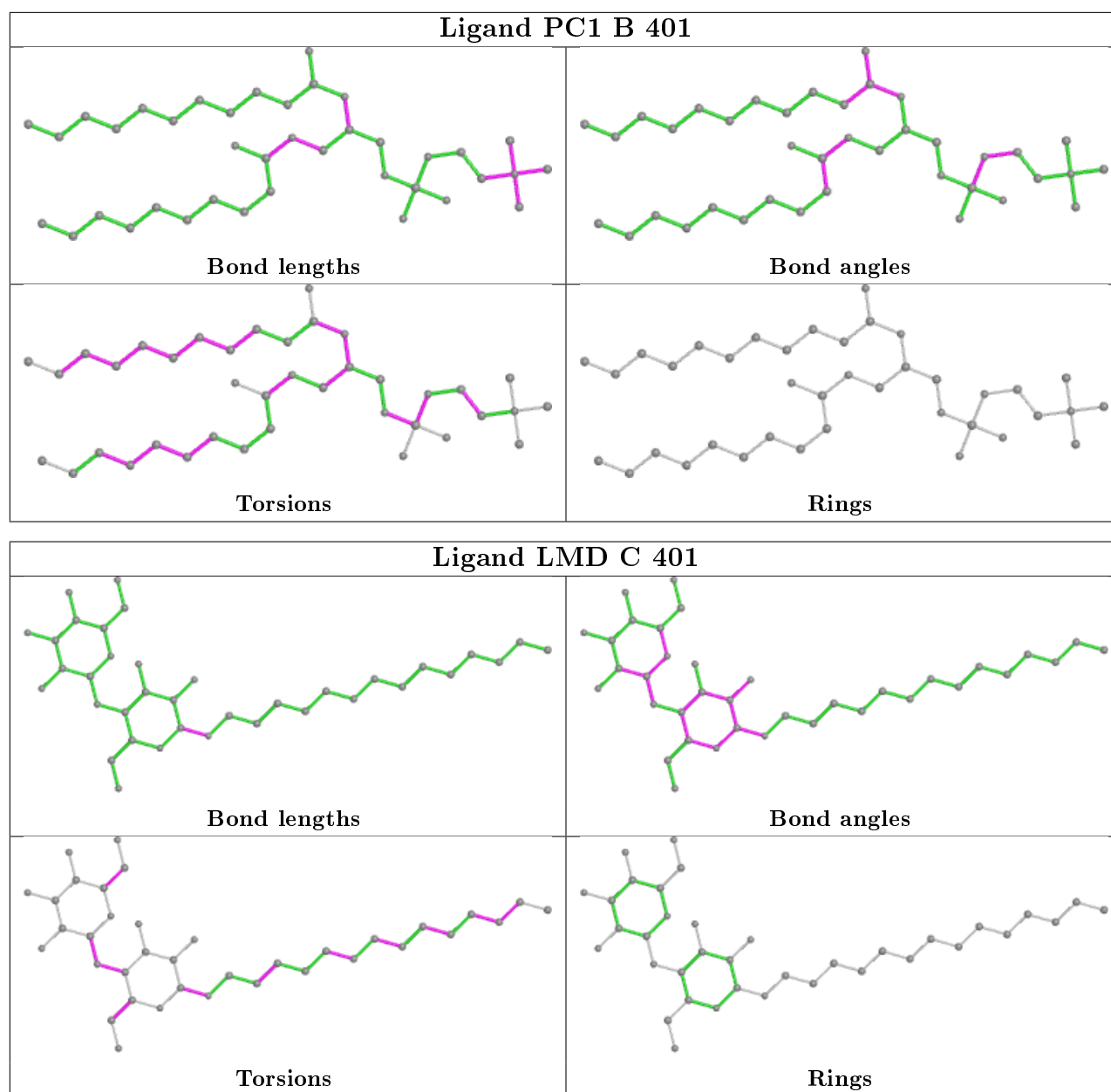
The following is a two-dimensional graphical depiction of Mogul quality analysis of bond lengths, bond angles, torsion angles, and ring geometry for all instances of the Ligand of Interest. In addition, ligands with molecular weight > 250 and outliers as shown on the validation Tables will also be included. For torsion angles, if less than 5% of the Mogul distribution of torsion angles is within 10 degrees of the torsion angle in question, then that torsion angle is considered an outlier. Any bond that is central to one or more torsion angles identified as an outlier by Mogul will be highlighted in the graph. For rings, the root-mean-square deviation (RMSD) between the ring in question and similar rings identified by Mogul is calculated over all ring torsion angles. If the average RMSD is greater than 60 degrees and the minimal RMSD between the ring in question and any Mogul-identified rings is also greater than 60 degrees, then that ring is considered an outlier. The outliers are highlighted in purple. The color gray indicates Mogul did not find sufficient equivalents in the CSD to analyse the geometry.



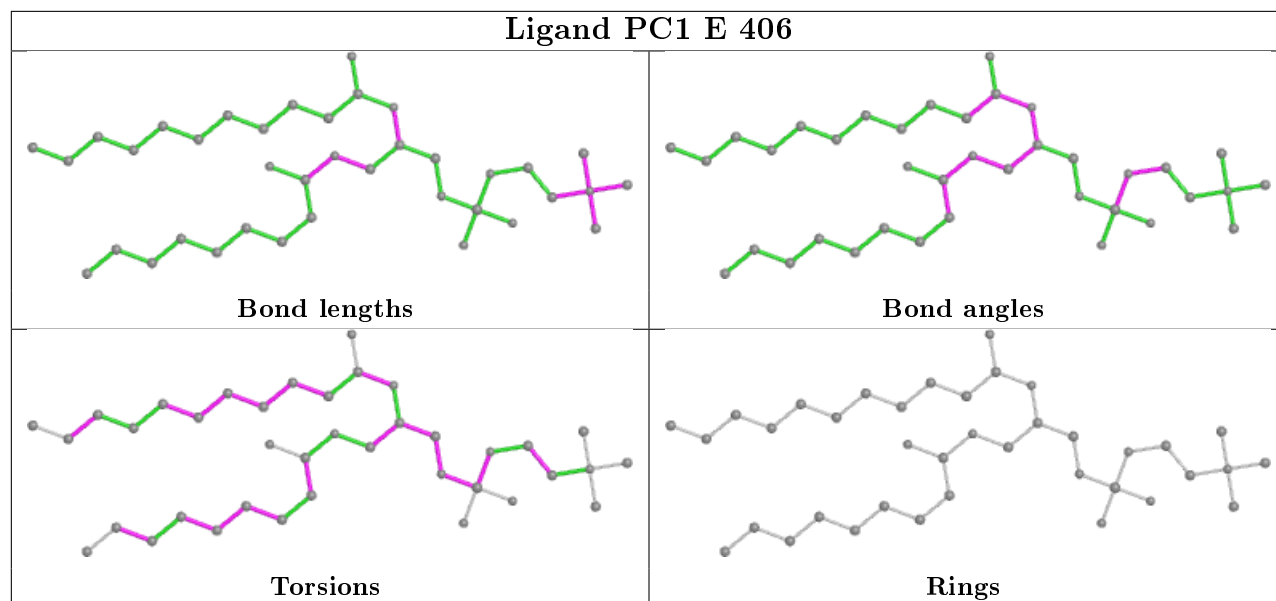




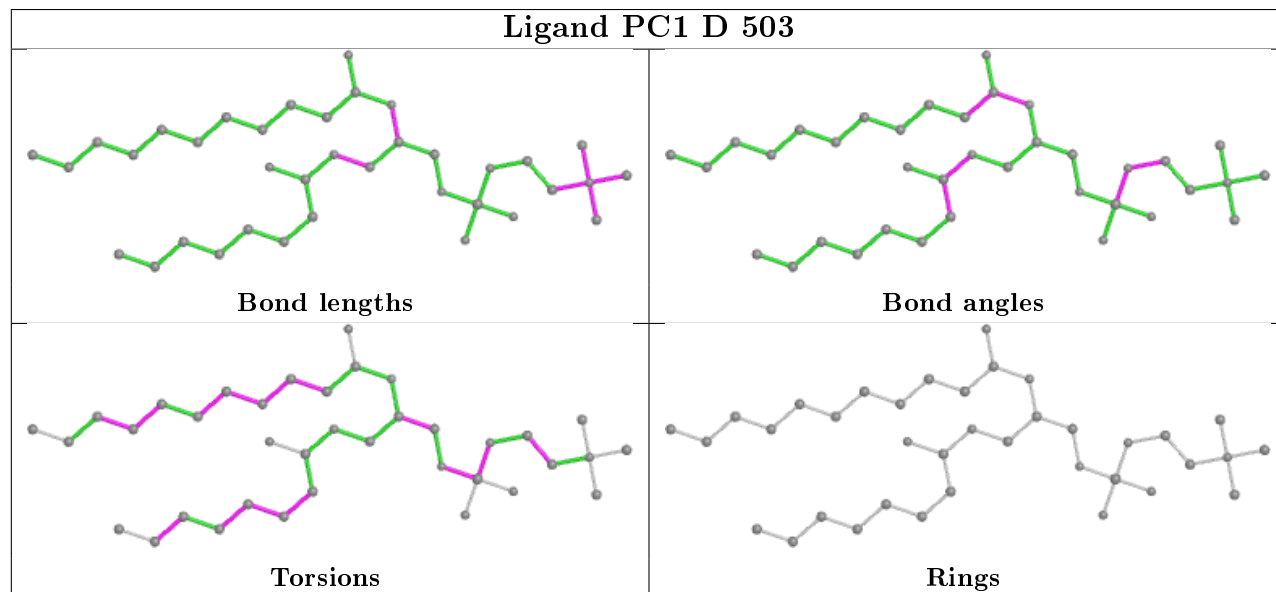


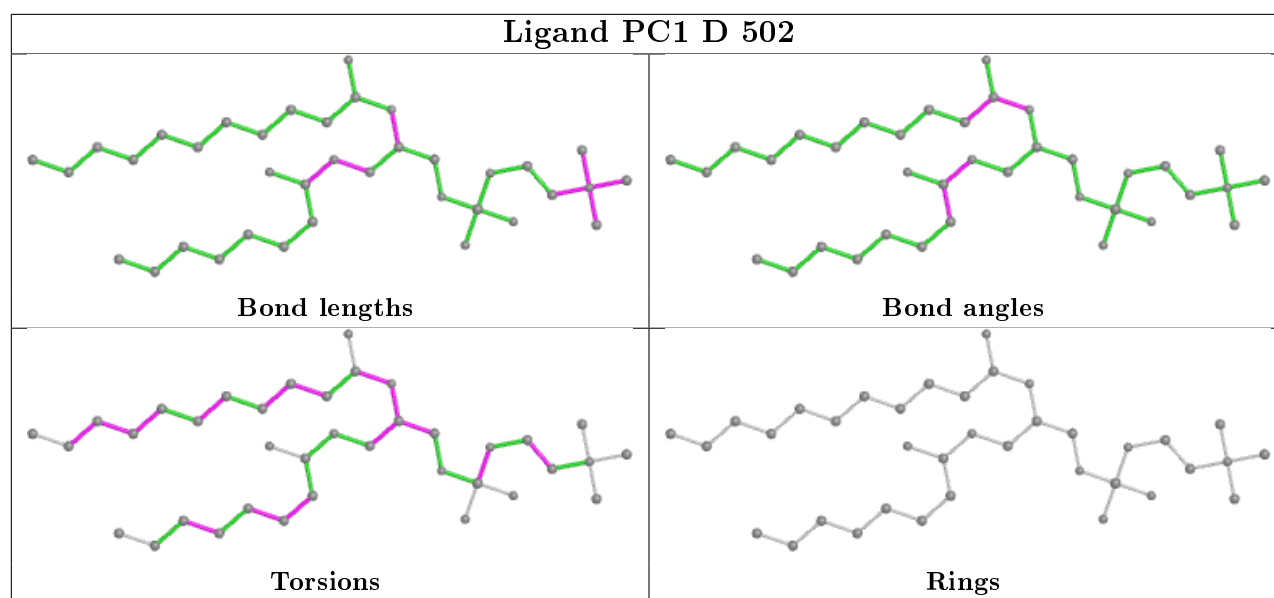


Ligand PC1 E 406



Ligand PC1 D 503





5.7 Other polymers [i](#)

There are no such residues in this entry.

5.8 Polymer linkage issues [i](#)

There are no chain breaks in this entry.

6 Fit of model and data [i](#)

6.1 Protein, DNA and RNA chains [i](#)

In the following table, the column labelled ‘#RSRZ> 2’ contains the number (and percentage) of RSRZ outliers, followed by percent RSRZ outliers for the chain as percentile scores relative to all X-ray entries and entries of similar resolution. The OWAB column contains the minimum, median, 95th percentile and maximum values of the occupancy-weighted average B-factor per residue. The column labelled ‘Q< 0.9’ lists the number of (and percentage) of residues with an average occupancy less than 0.9.

Mol	Chain	Analysed	<RSRZ>	#RSRZ>2	OWAB(Å ²)	Q<0.9
1	A	312/317 (98%)	-0.47	7 (2%) 62 48	61, 84, 120, 154	0
1	B	313/317 (98%)	-0.47	2 (0%) 89 83	59, 84, 118, 155	0
1	C	311/317 (98%)	-0.46	8 (2%) 56 40	58, 83, 121, 156	0
1	D	313/317 (98%)	-0.43	4 (1%) 77 65	61, 84, 121, 154	0
1	E	312/317 (98%)	-0.45	4 (1%) 77 65	60, 83, 120, 155	0
All	All	1561/1585 (98%)	-0.46	25 (1%) 72 59	58, 84, 121, 156	0

The worst 5 of 25 RSRZ outliers are listed below:

Mol	Chain	Res	Type	RSRZ
1	B	13	ASP	4.3
1	C	58	ARG	3.6
1	D	61	VAL	3.5
1	A	57	VAL	3.5
1	C	61	VAL	3.1

6.2 Non-standard residues in protein, DNA, RNA chains [i](#)

There are no non-standard protein/DNA/RNA residues in this entry.

6.3 Carbohydrates [i](#)

There are no carbohydrates in this entry.

6.4 Ligands [i](#)

In the following table, the Atoms column lists the number of modelled atoms in the group and the number defined in the chemical component dictionary. The B-factors column lists the minimum,

median, 95th percentile and maximum values of B factors of atoms in the group. The column labelled 'Q< 0.9' lists the number of atoms with occupancy less than 0.9.

Mol	Type	Chain	Res	Atoms	RSCC	RSR	B-factors(Å ²)	Q<0.9
4	OXL	D	505	6/6	0.54	0.34	98,106,117,119	0
3	PC1	C	404	32/54	0.67	0.51	71,117,157,183	0
3	PC1	A	402	37/54	0.72	0.55	71,107,171,182	0
4	OXL	E	410	6/6	0.72	0.25	95,103,118,120	0
3	PC1	E	405	38/54	0.72	0.43	73,117,154,175	0
3	PC1	D	502	37/54	0.74	0.45	67,101,160,175	0
3	PC1	D	503	37/54	0.75	0.38	73,114,155,179	0
3	PC1	C	403	38/54	0.75	0.44	60,112,169,185	0
3	PC1	B	401	39/54	0.76	0.42	76,115,160,170	0
3	PC1	E	406	38/54	0.76	0.55	79,131,169,183	0
4	OXL	B	404	6/6	0.77	0.29	87,106,119,121	0
2	LMD	E	404	37/37	0.77	0.44	70,124,151,157	0
2	LMD	A	401	37/37	0.78	0.36	61,118,143,151	0
5	ACT	B	406	4/4	0.79	0.43	85,94,104,117	0
2	LMD	C	402	25/37	0.80	0.34	68,88,131,138	0
4	OXL	C	405	6/6	0.81	0.29	83,89,99,113	0
3	PC1	A	403	39/54	0.81	0.44	64,121,167,189	0
2	LMD	E	402	26/37	0.82	0.41	65,102,134,139	0
4	OXL	A	406	6/6	0.82	0.49	94,103,120,127	0
5	ACT	E	412	4/4	0.83	0.51	80,114,116,131	0
2	LMD	C	401	37/37	0.83	0.30	63,111,144,154	0
4	OXL	E	409	6/6	0.83	0.29	92,106,110,110	0
4	OXL	E	407	6/6	0.83	0.17	84,105,114,123	0
3	PC1	B	402	38/54	0.86	0.44	75,133,158,162	0
4	OXL	A	404	6/6	0.86	0.18	77,88,107,111	0
4	OXL	D	507	6/6	0.86	0.41	103,113,117,119	0
4	OXL	D	506	6/6	0.86	0.33	89,101,114,118	0
4	OXL	C	406	6/6	0.87	0.42	91,95,112,115	0
4	OXL	E	408	6/6	0.88	0.23	81,88,106,114	0
4	OXL	D	501	6/6	0.88	0.14	78,97,108,113	0
5	ACT	A	408	4/4	0.88	0.27	79,90,100,106	0
4	OXL	B	403	6/6	0.89	0.12	89,97,104,110	0
4	OXL	D	504	6/6	0.89	0.26	74,83,88,106	0
5	ACT	C	408	4/4	0.90	0.58	91,95,116,122	0
4	OXL	E	403	6/6	0.90	0.13	71,97,108,114	0
2	LMD	E	401	21/37	0.91	0.30	60,84,105,126	0
5	ACT	D	509	4/4	0.94	0.41	93,97,100,102	0
4	OXL	A	405	6/6	0.94	0.24	64,84,92,100	0
5	ACT	D	508	4/4	0.94	0.23	82,98,104,107	0
5	ACT	C	407	4/4	0.95	0.36	72,88,93,102	0

Continued on next page...

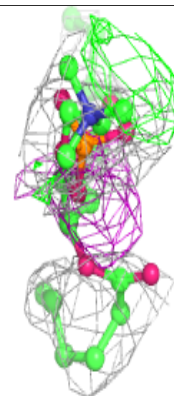
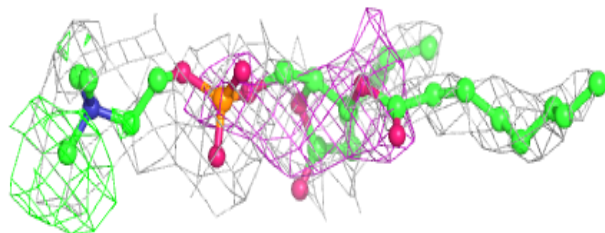
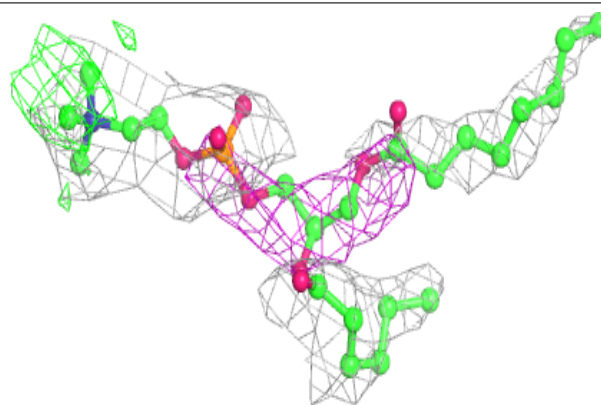
Continued from previous page...

Mol	Type	Chain	Res	Atoms	RSCC	RSR	B-factors(\AA^2)	Q<0.9
5	ACT	E	411	4/4	0.96	0.15	85,92,99,104	0
5	ACT	A	407	4/4	0.98	0.13	78,89,91,100	0
5	ACT	B	405	4/4	0.99	0.16	68,93,95,97	0

The following is a graphical depiction of the model fit to experimental electron density of all instances of the Ligand of Interest. In addition, ligands with molecular weight > 250 and outliers as shown on the geometry validation Tables will also be included. Each fit is shown from different orientation to approximate a three-dimensional view.

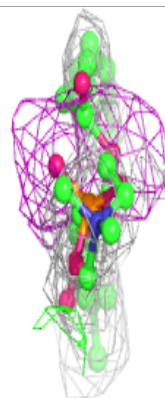
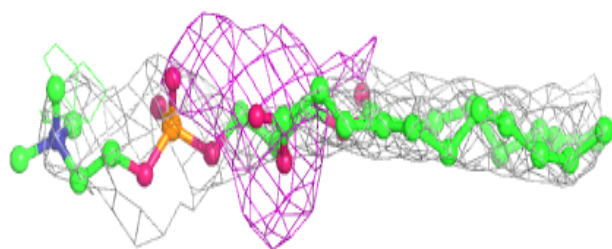
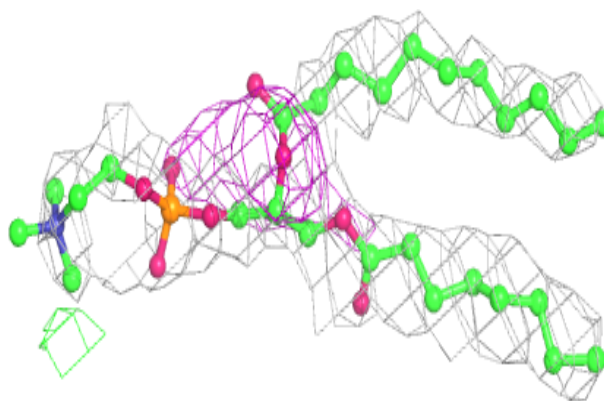
Electron density around PC1 C 404:

2mF_o-DF_c (at 0.7 rmsd) in gray
mF_o-DF_c (at 3 rmsd) in purple (negative)
and green (positive)

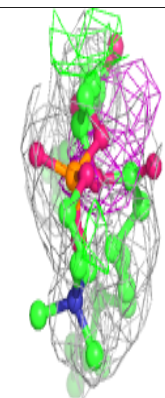
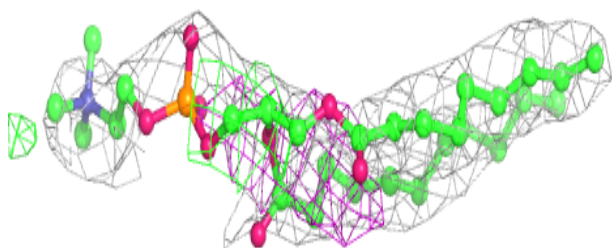
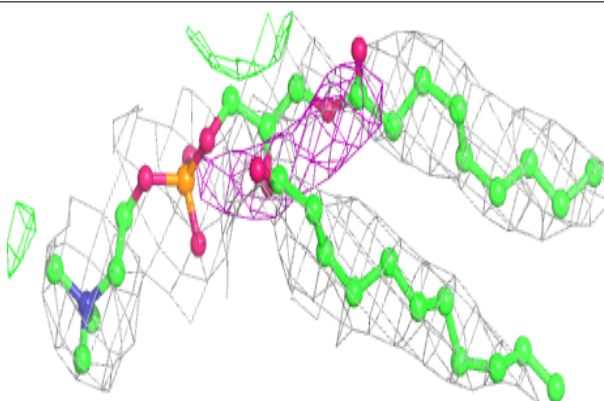


Electron density around PC1 A 402:

$2mF_o-DF_c$ (at 0.7 rmsd) in gray
 mF_o-DF_c (at 3 rmsd) in purple (negative)
and green (positive)

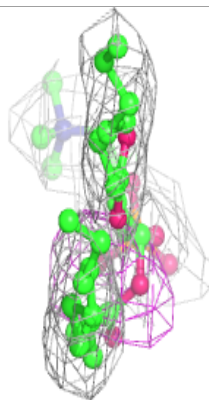
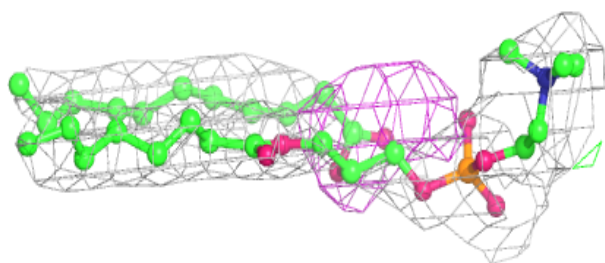
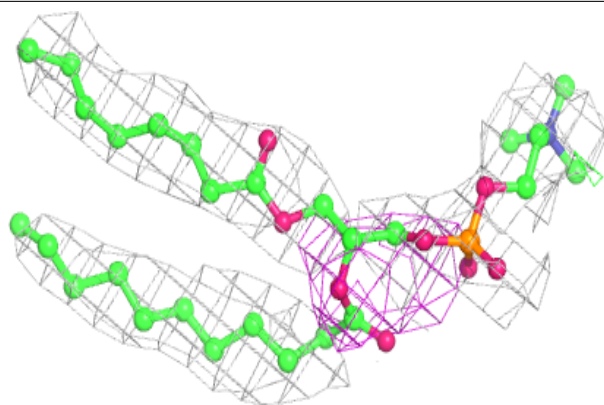
**Electron density around PC1 E 405:**

$2mF_o-DF_c$ (at 0.7 rmsd) in gray
 mF_o-DF_c (at 3 rmsd) in purple (negative)
and green (positive)

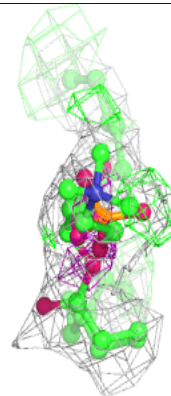
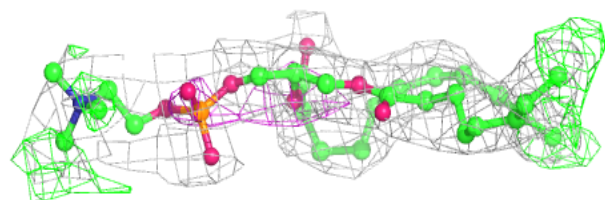
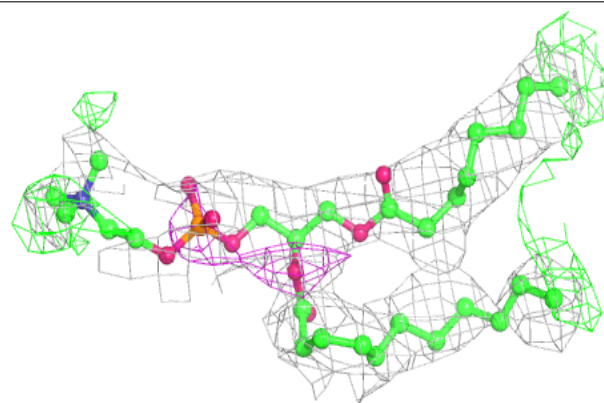


Electron density around PC1 D 502:

$2mF_o-DF_c$ (at 0.7 rmsd) in gray
 mF_o-DF_c (at 3 rmsd) in purple (negative)
and green (positive)

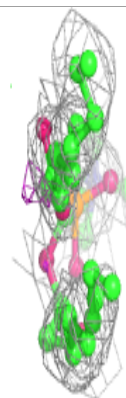
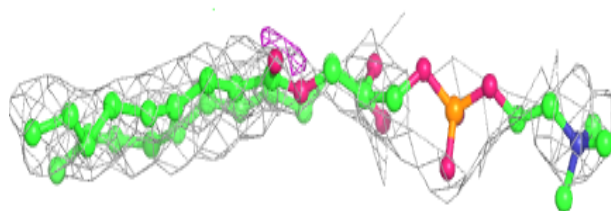
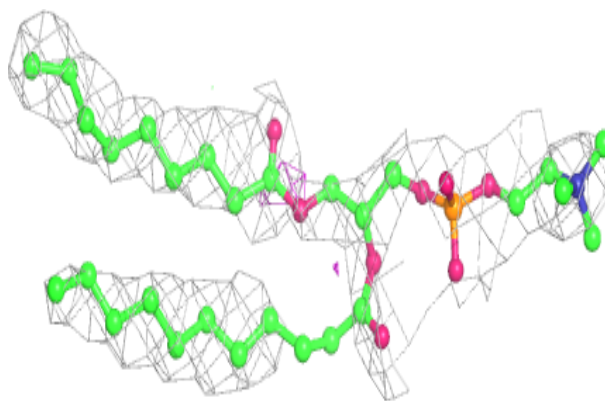
**Electron density around PC1 D 503:**

$2mF_o-DF_c$ (at 0.7 rmsd) in gray
 mF_o-DF_c (at 3 rmsd) in purple (negative)
and green (positive)

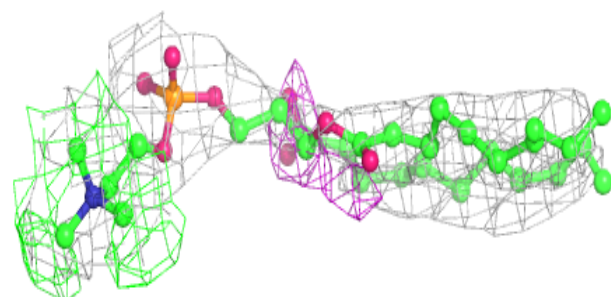
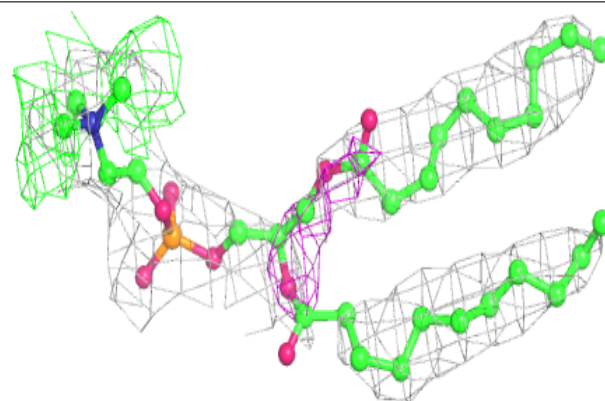


Electron density around PC1 C 403:

$2mF_o-DF_c$ (at 0.7 rmsd) in gray
 mF_o-DF_c (at 3 rmsd) in purple (negative)
and green (positive)

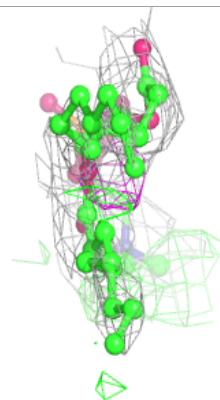
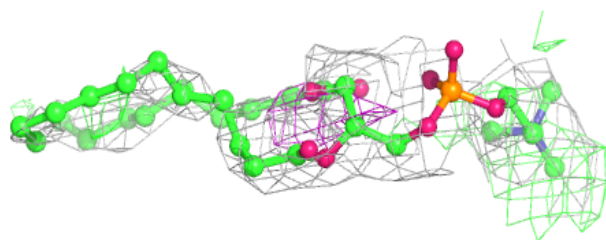
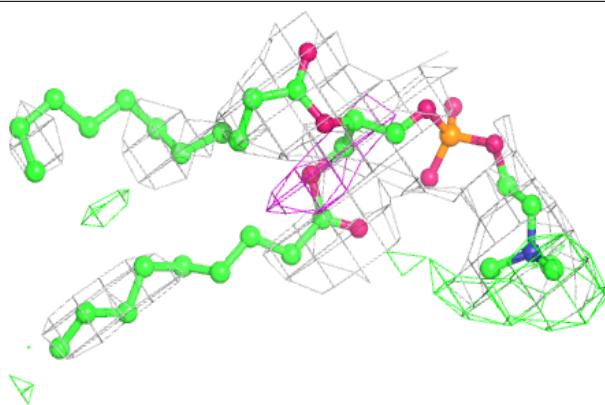
**Electron density around PC1 B 401:**

$2mF_o-DF_c$ (at 0.7 rmsd) in gray
 mF_o-DF_c (at 3 rmsd) in purple (negative)
and green (positive)

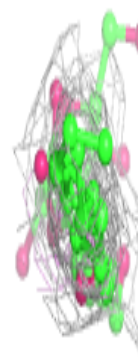
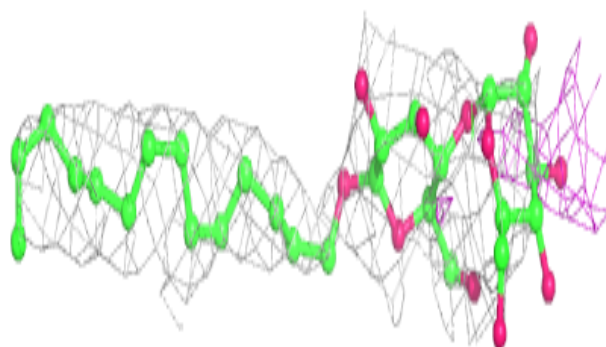
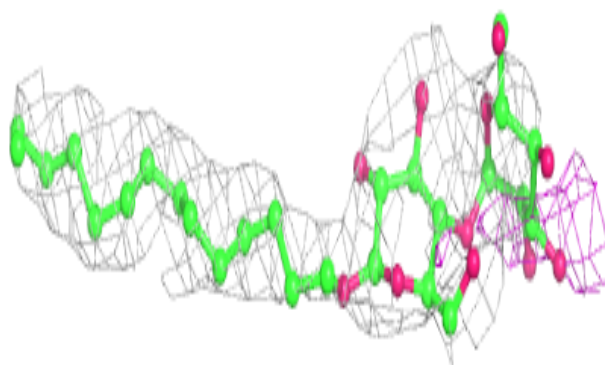


Electron density around PC1 E 406:

$2mF_o-DF_c$ (at 0.7 rmsd) in gray
 mF_o-DF_c (at 3 rmsd) in purple (negative)
and green (positive)

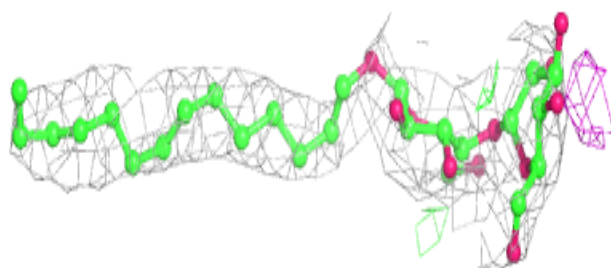
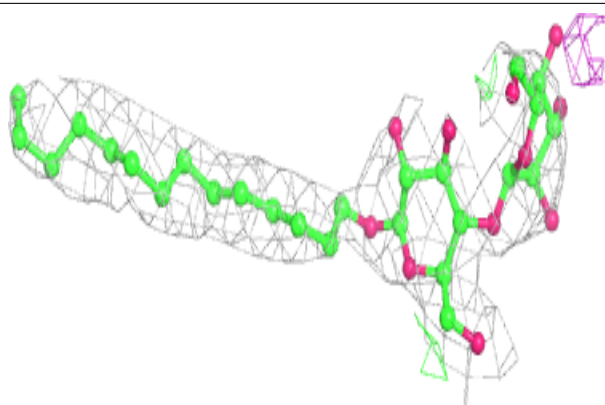
**Electron density around LMD E 404:**

$2mF_o-DF_c$ (at 0.7 rmsd) in gray
 mF_o-DF_c (at 3 rmsd) in purple (negative)
and green (positive)

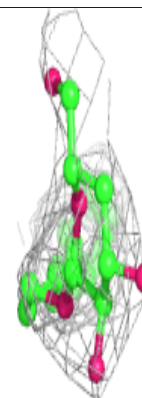
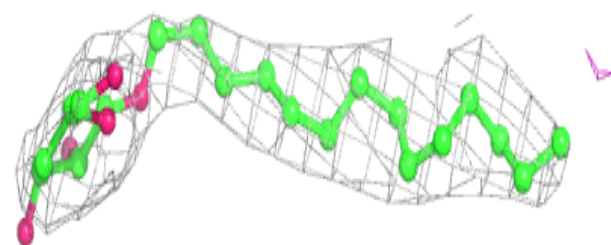
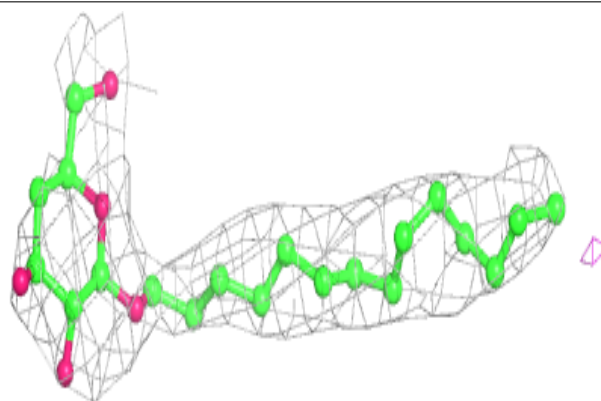


Electron density around LMD A 401:

$2mF_o-DF_c$ (at 0.7 rmsd) in gray
 mF_o-DF_c (at 3 rmsd) in purple (negative)
and green (positive)

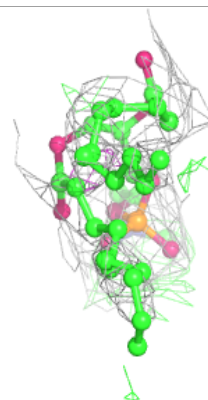
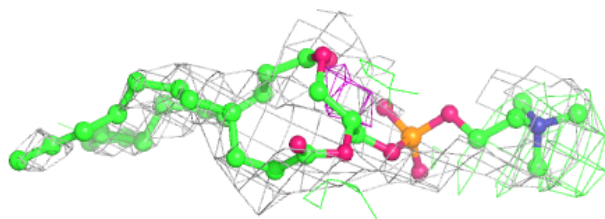
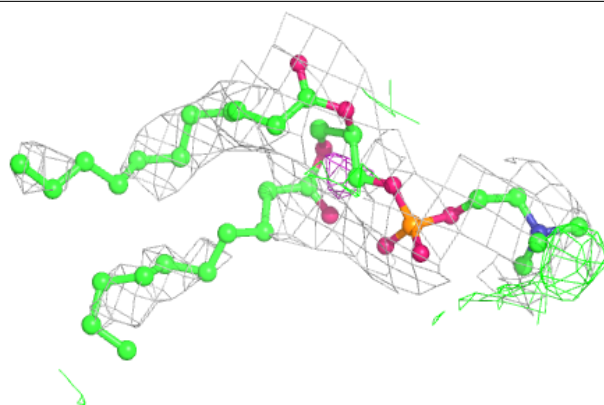
**Electron density around LMD C 402:**

$2mF_o-DF_c$ (at 0.7 rmsd) in gray
 mF_o-DF_c (at 3 rmsd) in purple (negative)
and green (positive)

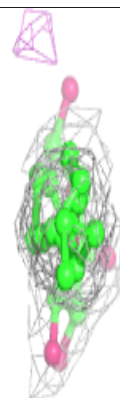
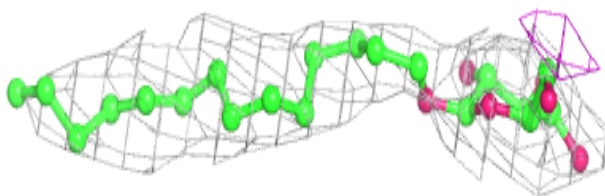
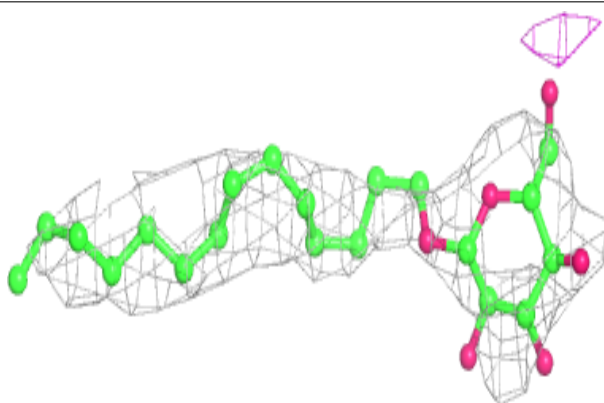


Electron density around PC1 A 403:

$2mF_o-DF_c$ (at 0.7 rmsd) in gray
 mF_o-DF_c (at 3 rmsd) in purple (negative)
and green (positive)

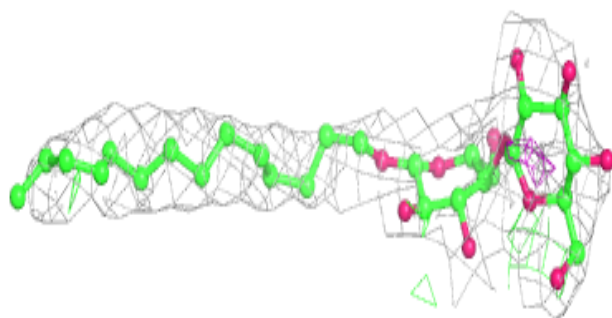
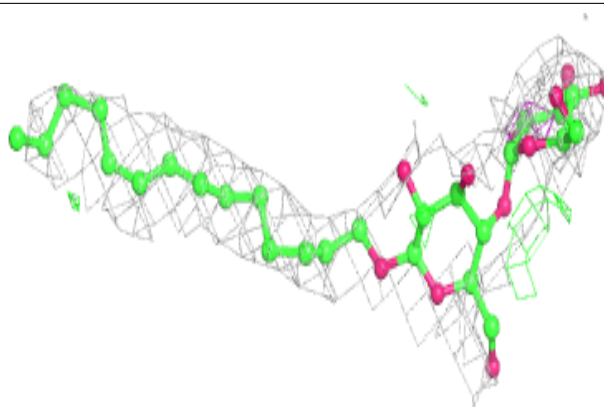
**Electron density around LMD E 402:**

$2mF_o-DF_c$ (at 0.7 rmsd) in gray
 mF_o-DF_c (at 3 rmsd) in purple (negative)
and green (positive)

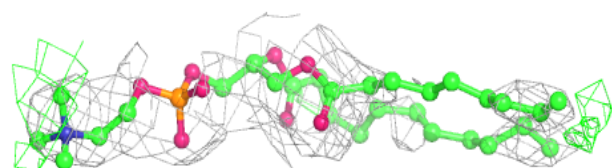
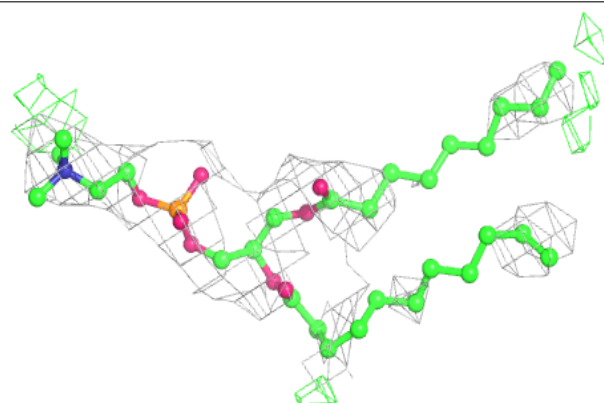


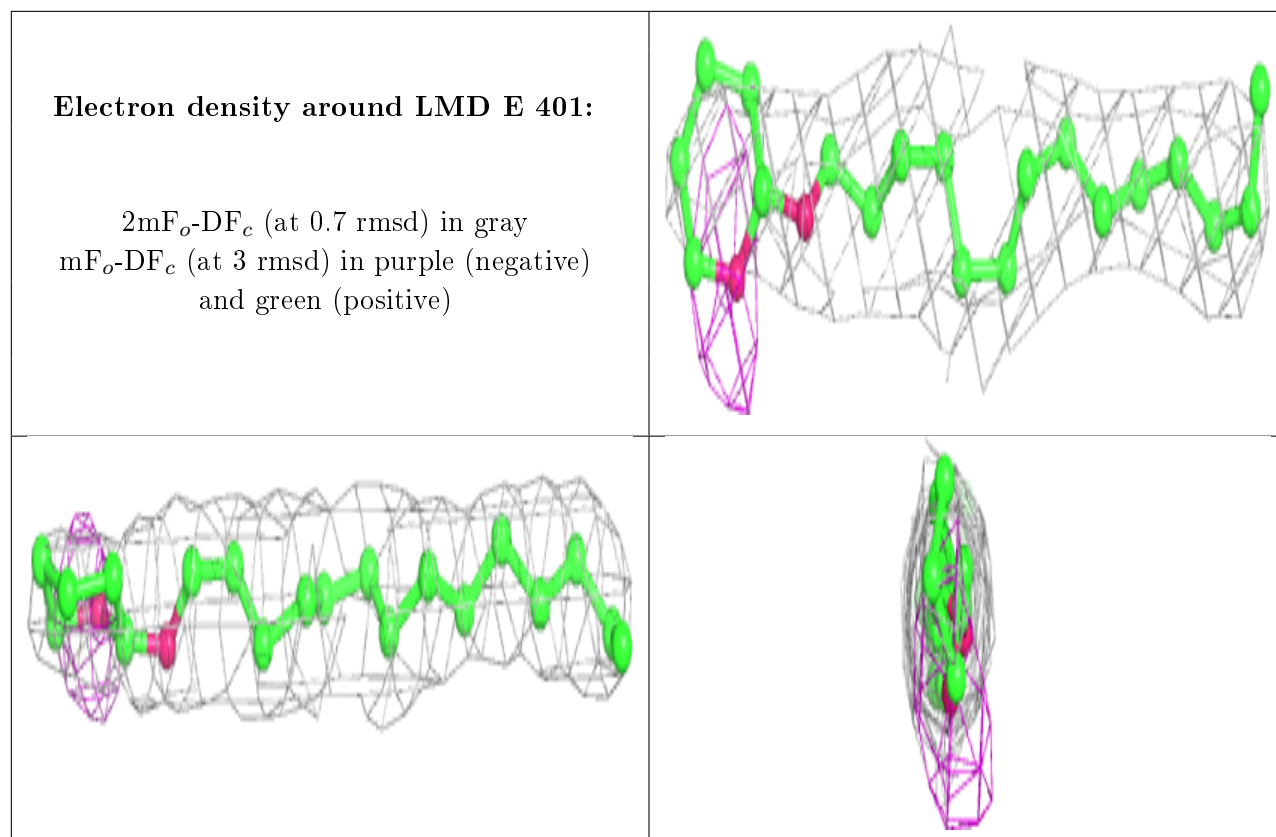
Electron density around LMD C 401:

$2mF_o-DF_c$ (at 0.7 rmsd) in gray
 mF_o-DF_c (at 3 rmsd) in purple (negative)
and green (positive)

**Electron density around PC1 B 402:**

$2mF_o-DF_c$ (at 0.7 rmsd) in gray
 mF_o-DF_c (at 3 rmsd) in purple (negative)
and green (positive)





6.5 Other polymers [i](#)

There are no such residues in this entry.