



wwPDB X-ray Structure Validation Summary Report ⓘ

May 25, 2020 – 05:27 am BST

PDB ID : 5IRP
Title : Crystal structure of the alanine racemase Bsu17640 from *Bacillus subtilis*
Authors : Bernardo-Garcia, N.; Gago, F.; Hermoso, J.A.
Deposited on : 2016-03-14
Resolution : 2.10 Å(reported)

This is a wwPDB X-ray Structure Validation Summary Report for a publicly released PDB entry.

We welcome your comments at validation@mail.wwpdb.org

A user guide is available at

<https://www.wwpdb.org/validation/2017/XrayValidationReportHelp>

with specific help available everywhere you see the ⓘ symbol.

The following versions of software and data (see [references ⓘ](#)) were used in the production of this report:

MolProbity : 4.02b-467
Mogul : 1.8.5 (274361), CSD as541be (2020)
Xtriage (Phenix) : 1.13
EDS : 2.11
Percentile statistics : 20191225.v01 (using entries in the PDB archive December 25th 2019)
Refmac : 5.8.0158
CCP4 : 7.0.044 (Gargrove)
Ideal geometry (proteins) : Engh & Huber (2001)
Ideal geometry (DNA, RNA) : Parkinson et al. (1996)
Validation Pipeline (wwPDB-VP) : 2.11

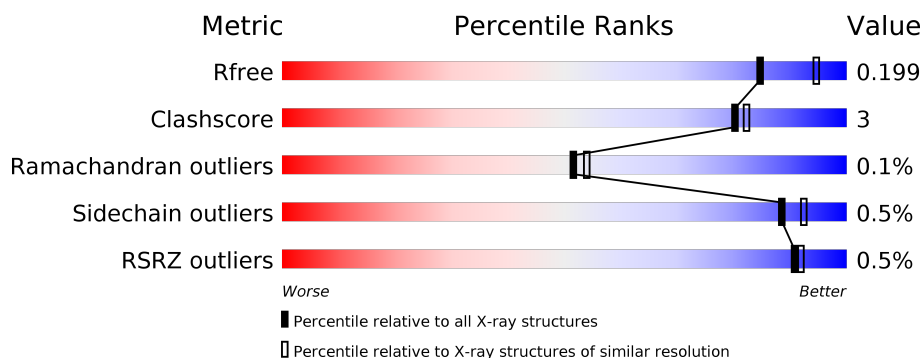
1 Overall quality at a glance

The following experimental techniques were used to determine the structure:

X-RAY DIFFRACTION

The reported resolution of this entry is 2.10 Å.

Percentile scores (ranging between 0-100) for global validation metrics of the entry are shown in the following graphic. The table shows the number of entries on which the scores are based.



Metric	Whole archive (#Entries)	Similar resolution (#Entries, resolution range(Å))
R_{free}	130704	5197 (2.10-2.10)
Clashscore	141614	5710 (2.10-2.10)
Ramachandran outliers	138981	5647 (2.10-2.10)
Sidechain outliers	138945	5648 (2.10-2.10)
RSRZ outliers	127900	5083 (2.10-2.10)

The table below summarises the geometric issues observed across the polymeric chains and their fit to the electron density. The red, orange, yellow and green segments on the lower bar indicate the fraction of residues that contain outliers for ≥ 3 , 2, 1 and 0 types of geometric quality criteria respectively. A grey segment represents the fraction of residues that are not modelled. The numeric value for each fraction is indicated below the corresponding segment, with a dot representing fractions $\leq 5\%$. The upper red bar (where present) indicates the fraction of residues that have poor fit to the electron density. The numeric value is given above the bar.

Mol	Chain	Length	Quality of chain
1	A	394	<div> <div style="width: 100%; height: 10px; background: linear-gradient(to right, red 1%, orange 1%, yellow 1%, green 93%, grey 5%);"></div> <div style="display: flex; justify-content: space-between; width: 100%;"> % 93% 5% </div> </div>
1	B	394	<div> <div style="width: 100%; height: 10px; background: linear-gradient(to right, red 1%, orange 1%, yellow 1%, green 89%, grey 9%);"></div> <div style="display: flex; justify-content: space-between; width: 100%;"> % 89% 9% </div> </div>

2 Entry composition [i](#)

There are 9 unique types of molecules in this entry. The entry contains 6830 atoms, of which 0 are hydrogens and 0 are deuteriums.

In the tables below, the ZeroOcc column contains the number of atoms modelled with zero occupancy, the AltConf column contains the number of residues with at least one atom in alternate conformation and the Trace column contains the number of residues modelled with at most 2 atoms.

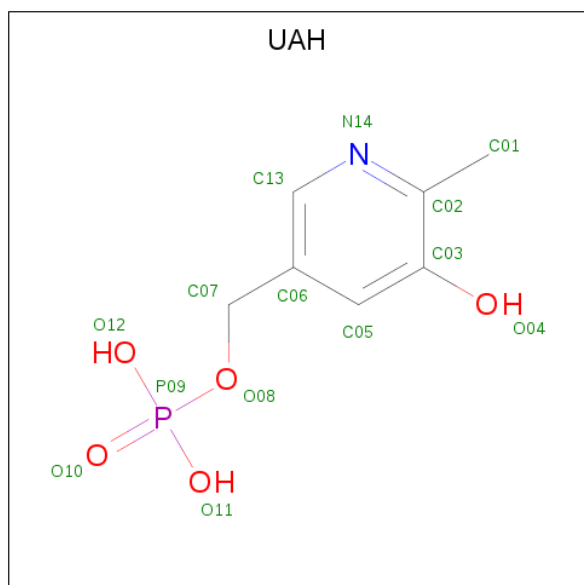
- Molecule 1 is a protein called Alanine racemase 2.

Mol	Chain	Residues	Atoms					ZeroOcc	AltConf	Trace
1	A	386	Total	C	N	O	S	0	3	0
			3021	1931	528	548	14			
1	B	386	Total	C	N	O	S	0	3	0
			3024	1933	528	549	14			

- Molecule 2 is CHLORIDE ION (three-letter code: CL) (formula: Cl).

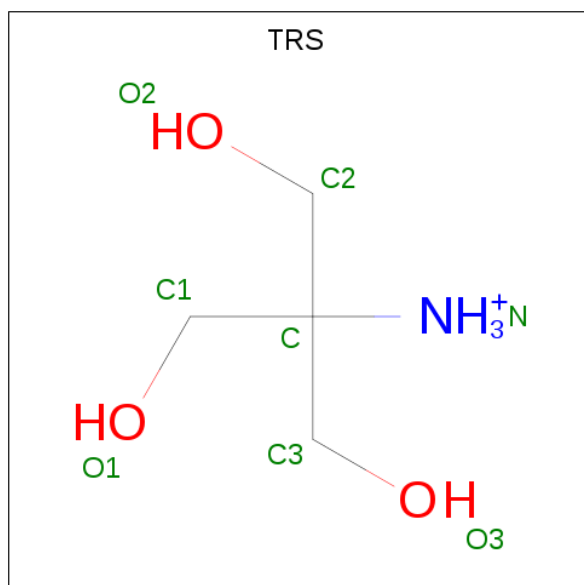
Mol	Chain	Residues	Atoms		ZeroOcc	AltConf
2	B	3	Total	Cl	0	0
			3	3		
2	A	4	Total	Cl	0	0
			4	4		

- Molecule 3 is (5-hydroxy-6-methylpyridin-3-yl)methyl dihydrogen phosphate (three-letter code: UAH) (formula: C₇H₁₀NO₅P).



Mol	Chain	Residues	Atoms					ZeroOcc	AltConf
3	A	1	Total	C	N	O	P	0	0
			14	7	1	5	1		
3	B	1	Total	C	N	O	P	0	0
			14	7	1	5	1		

- Molecule 4 is 2-AMINO-2-HYDROXYMETHYL-PROPANE-1,3-DIOL (three-letter code: TRS) (formula: $C_4H_{12}NO_3$).



Mol	Chain	Residues	Atoms				ZeroOcc	AltConf
4	A	1	Total	C	N	O	0	0
			8	4	1	3		
4	B	1	Total	C	N	O	0	0
			8	4	1	3		

- Molecule 5 is DI(HYDROXYETHYL)ETHER (three-letter code: PEG) (formula: $C_4H_{10}O_3$).



Mol	Chain	Residues	Atoms			ZeroOcc	AltConf
5	A	1	Total	C	O	0	0
			7	4	3		
5	A	1	Total	C	O	0	0
			7	4	3		
5	B	1	Total	C	O	0	0
			7	4	3		
5	B	1	Total	C	O	0	0
			7	4	3		

- Molecule 6 is GLYCEROL (three-letter code: GOL) (formula: $C_3H_8O_3$).

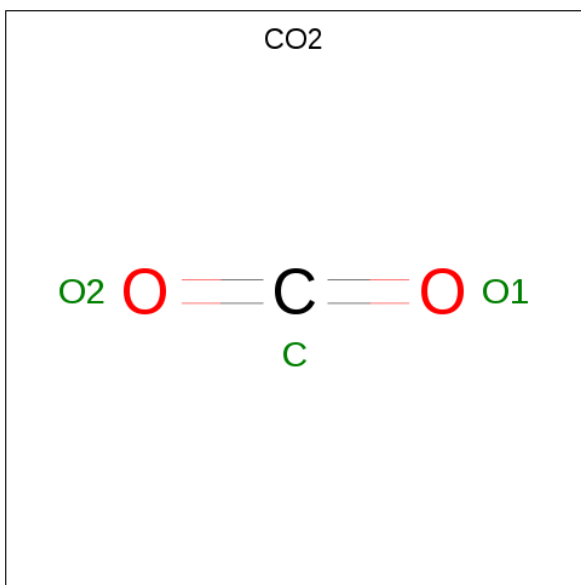


Mol	Chain	Residues	Atoms			ZeroOcc	AltConf
6	A	1	Total	C	O	0	0
			6	3	3		
6	B	1	Total	C	O	0	0
			6	3	3		

- Molecule 7 is MAGNESIUM ION (three-letter code: MG) (formula: Mg).

Mol	Chain	Residues	Atoms		ZeroOcc	AltConf
7	B	11	Total	Mg	0	0
			11	11		
7	A	9	Total	Mg	0	0
			9	9		

- Molecule 8 is CARBON DIOXIDE (three-letter code: CO2) (formula: CO₂).



Mol	Chain	Residues	Atoms			ZeroOcc	AltConf
8	B	1	Total	C	O	0	0
			3	1	2		
8	B	1	Total	C	O	0	0
			3	1	2		

- Molecule 9 is water.

Mol	Chain	Residues	Atoms		ZeroOcc	AltConf
9	A	337	Total	O	0	0
			337	337		

Continued on next page...

Continued from previous page...

Mol	Chain	Residues	Atoms		ZeroOcc	AltConf
9	B	331	Total 331	O 331	0	0

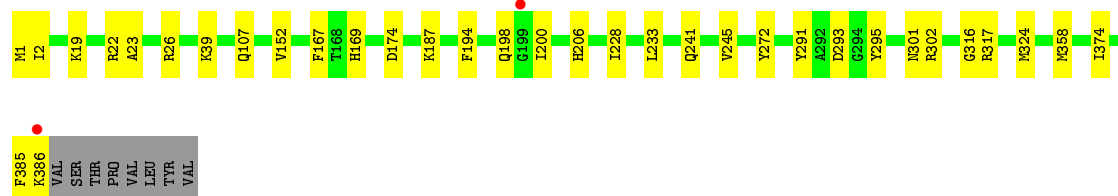
3 Residue-property plots [i](#)

These plots are drawn for all protein, RNA and DNA chains in the entry. The first graphic for a chain summarises the proportions of the various outlier classes displayed in the second graphic. The second graphic shows the sequence view annotated by issues in geometry and electron density. Residues are color-coded according to the number of geometric quality criteria for which they contain at least one outlier: green = 0, yellow = 1, orange = 2 and red = 3 or more. A red dot above a residue indicates a poor fit to the electron density ($RSRZ > 2$). Stretches of 2 or more consecutive residues without any outlier are shown as a green connector. Residues present in the sample, but not in the model, are shown in grey.

• Molecule 1: Alanine racemase 2



• Molecule 1: Alanine racemase 2



4 Data and refinement statistics

Property	Value	Source
Space group	P 43 2 2	Depositor
Cell constants a, b, c, α , β , γ	72.89 Å 72.89 Å 332.83 Å 90.00° 90.00° 90.00°	Depositor
Resolution (Å)	49.15 – 2.10 49.23 – 2.10	Depositor EDS
% Data completeness (in resolution range)	100.0 (49.15-2.10) 97.5 (49.23-2.10)	Depositor EDS
R_{merge}	0.10	Depositor
R_{sym}	(Not available)	Depositor
$\langle I/\sigma(I) \rangle$ ¹	3.87 (at 2.10 Å)	Xtriage
Refinement program	PHENIX (1.10.1 _2155: ???)	Depositor
R, R_{free}	0.154 , 0.199 0.154 , 0.199	Depositor DCC
R_{free} test set	2736 reflections (5.08%)	wwPDB-VP
Wilson B-factor (Å ²)	23.5	Xtriage
Anisotropy	0.318	Xtriage
Bulk solvent k_{sol} (e/Å ³), B_{sol} (Å ²)	0.36 , 61.5	EDS
L-test for twinning ²	$\langle L \rangle = 0.47$, $\langle L^2 \rangle = 0.30$	Xtriage
Estimated twinning fraction	No twinning to report.	Xtriage
F_o, F_c correlation	0.96	EDS
Total number of atoms	6830	wwPDB-VP
Average B, all atoms (Å ²)	30.0	wwPDB-VP

Xtriage's analysis on translational NCS is as follows: *The largest off-origin peak in the Patterson function is 12.65% of the height of the origin peak. No significant pseudotranslation is detected.*

¹Intensities estimated from amplitudes.

²Theoretical values of $\langle |L| \rangle$, $\langle L^2 \rangle$ for acentric reflections are 0.5, 0.333 respectively for untwinned datasets, and 0.375, 0.2 for perfectly twinned datasets.

5 Model quality

5.1 Standard geometry

Bond lengths and bond angles in the following residue types are not validated in this section: GOL, MG, CO2, CL, UAH, TRS, PEG

The Z score for a bond length (or angle) is the number of standard deviations the observed value is removed from the expected value. A bond length (or angle) with $|Z| > 5$ is considered an outlier worth inspection. RMSZ is the root-mean-square of all Z scores of the bond lengths (or angles).

Mol	Chain	Bond lengths		Bond angles	
		RMSZ	# Z >5	RMSZ	# Z >5
1	A	0.38	0/3081	0.54	0/4159
1	B	0.37	0/3084	0.53	0/4164
All	All	0.37	0/6165	0.53	0/8323

There are no bond length outliers.

There are no bond angle outliers.

There are no chirality outliers.

There are no planarity outliers.

5.2 Too-close contacts

In the following table, the Non-H and H(model) columns list the number of non-hydrogen atoms and hydrogen atoms in the chain respectively. The H(added) column lists the number of hydrogen atoms added and optimized by MolProbity. The Clashes column lists the number of clashes within the asymmetric unit, whereas Symm-Clashes lists symmetry related clashes.

Mol	Chain	Non-H	H(model)	H(added)	Clashes	Symm-Clashes
1	A	3021	0	3127	14	0
1	B	3024	0	3128	22	0
2	A	4	0	0	1	0
2	B	3	0	0	2	0
3	A	14	0	0	0	0
3	B	14	0	0	2	0
4	A	8	0	12	0	0
4	B	8	0	12	1	0
5	A	14	0	20	1	0
5	B	14	0	20	0	0
6	A	6	0	8	0	0

Continued on next page...

Continued from previous page...

Mol	Chain	Non-H	H(model)	H(added)	Clashes	Symm-Clashes
6	B	6	0	8	0	0
7	A	9	0	0	0	0
7	B	11	0	0	0	0
8	B	6	0	0	1	0
9	A	337	0	0	7	1
9	B	331	0	0	2	1
All	All	6830	0	6335	34	1

The all-atom clashscore is defined as the number of clashes found per 1000 atoms (including hydrogen atoms). The all-atom clashscore for this structure is 3.

The worst 5 of 34 close contacts within the same asymmetric unit are listed below, sorted by their clash magnitude.

Atom-1	Atom-2	Interatomic distance (Å)	Clash overlap (Å)
1:A:241:GLN:NE2	9:A:501:HOH:O	2.16	0.70
1:A:52:ARG:NH2	9:A:506:HOH:O	2.28	0.67
1:A:156:LYS:NZ	9:A:505:HOH:O	2.28	0.63
1:B:301:ASN:ND2	1:B:316:GLY:H	1.97	0.62
1:B:241:GLN:NE2	9:B:501:HOH:O	2.17	0.60

All (1) symmetry-related close contacts are listed below. The label for Atom-2 includes the symmetry operator and encoded unit-cell translations to be applied.

Atom-1	Atom-2	Interatomic distance (Å)	Clash overlap (Å)
9:A:740:HOH:O	9:B:633:HOH:O[5_657]	2.15	0.05

5.3 Torsion angles [i](#)

5.3.1 Protein backbone [i](#)

In the following table, the Percentiles column shows the percent Ramachandran outliers of the chain as a percentile score with respect to all X-ray entries followed by that with respect to entries of similar resolution.

The Analysed column shows the number of residues for which the backbone conformation was analysed, and the total number of residues.

Mol	Chain	Analysed	Favoured	Allowed	Outliers	Percentiles
1	A	387/394 (98%)	375 (97%)	11 (3%)	1 (0%)	41 41

Continued on next page...

Continued from previous page...

Mol	Chain	Analysed	Favoured	Allowed	Outliers	Percentiles	
1	B	387/394 (98%)	378 (98%)	9 (2%)	0	100	100
All	All	774/788 (98%)	753 (97%)	20 (3%)	1 (0%)	51	54

All (1) Ramachandran outliers are listed below:

Mol	Chain	Res	Type
1	A	203	PRO

5.3.2 Protein sidechains ⓘ

In the following table, the Percentiles column shows the percent sidechain outliers of the chain as a percentile score with respect to all X-ray entries followed by that with respect to entries of similar resolution.

The Analysed column shows the number of residues for which the sidechain conformation was analysed, and the total number of residues.

Mol	Chain	Analysed	Rotameric	Outliers	Percentiles	
1	A	323/328 (98%)	321 (99%)	2 (1%)	86	90
1	B	323/328 (98%)	322 (100%)	1 (0%)	92	95
All	All	646/656 (98%)	643 (100%)	3 (0%)	88	92

All (3) residues with a non-rotameric sidechain are listed below:

Mol	Chain	Res	Type
1	A	89	SER
1	A	324	MET
1	B	324	MET

Some sidechains can be flipped to improve hydrogen bonding and reduce clashes. All (4) such sidechains are listed below:

Mol	Chain	Res	Type
1	A	125	ASN
1	A	241	GLN
1	A	301	ASN
1	B	301	ASN

5.3.3 RNA ⓘ

There are no RNA molecules in this entry.

5.4 Non-standard residues in protein, DNA, RNA chains ⓘ

There are no non-standard protein/DNA/RNA residues in this entry.

5.5 Carbohydrates ⓘ

There are no carbohydrates in this entry.

5.6 Ligand geometry ⓘ

Of 39 ligands modelled in this entry, 27 are monoatomic - leaving 12 for Mogul analysis.

In the following table, the Counts columns list the number of bonds (or angles) for which Mogul statistics could be retrieved, the number of bonds (or angles) that are observed in the model and the number of bonds (or angles) that are defined in the Chemical Component Dictionary. The Link column lists molecule types, if any, to which the group is linked. The Z score for a bond length (or angle) is the number of standard deviations the observed value is removed from the expected value. A bond length (or angle) with $|Z| > 2$ is considered an outlier worth inspection. RMSZ is the root-mean-square of all Z scores of the bond lengths (or angles).

Mol	Type	Chain	Res	Link	Bond lengths			Bond angles		
					Counts	RMSZ	$\# Z > 2$	Counts	RMSZ	$\# Z > 2$
8	CO2	B	401	-	2,2,2	1.18	0	1,1,1	0.51	0
5	PEG	A	405	-	6,6,6	0.47	0	5,5,5	0.24	0
5	PEG	A	404	-	6,6,6	0.48	0	5,5,5	0.31	0
8	CO2	B	405	-	2,2,2	1.10	0	1,1,1	0.53	0
3	UAH	A	402	-	13,14,14	2.01	6 (46%)	17,20,20	1.35	3 (17%)
6	GOL	B	408	-	5,5,5	0.36	0	5,5,5	0.15	0
5	PEG	B	406	-	6,6,6	0.49	0	5,5,5	0.27	0
5	PEG	B	407	-	6,6,6	0.48	0	5,5,5	0.26	0
4	TRS	A	403	-	7,7,7	0.24	0	9,9,9	0.59	0
3	UAH	B	403	-	13,14,14	1.90	3 (23%)	17,20,20	1.37	3 (17%)
6	GOL	A	406	-	5,5,5	0.33	0	5,5,5	0.31	0
4	TRS	B	404	-	7,7,7	0.29	0	9,9,9	0.59	0

In the following table, the Chirals column lists the number of chiral outliers, the number of chiral centers analysed, the number of these observed in the model and the number defined in the Chemical Component Dictionary. Similar counts are reported in the Torsion and Rings columns. '-' means no outliers of that kind were identified.

Mol	Type	Chain	Res	Link	Chirals	Torsions	Rings
5	PEG	A	405	-	-	2/4/4/4	-
5	PEG	A	404	-	-	1/4/4/4	-
3	UAH	A	402	-	-	0/6/6/6	0/1/1/1
6	GOL	B	408	-	-	2/4/4/4	-
5	PEG	B	406	-	-	1/4/4/4	-
5	PEG	B	407	-	-	0/4/4/4	-
4	TRS	A	403	-	-	3/9/9/9	-
3	UAH	B	403	-	-	0/6/6/6	0/1/1/1
6	GOL	A	406	-	-	1/4/4/4	-
4	TRS	B	404	-	-	0/9/9/9	-

The worst 5 of 9 bond length outliers are listed below:

Mol	Chain	Res	Type	Atoms	Z	Observed(Å)	Ideal(Å)
3	A	402	UAH	P09-O10	4.71	1.65	1.50
3	B	403	UAH	P09-O10	4.61	1.65	1.50
3	B	403	UAH	P09-O12	-2.65	1.44	1.54
3	A	402	UAH	P09-O12	-2.32	1.45	1.54
3	A	402	UAH	C01-C02	2.31	1.54	1.50

The worst 5 of 6 bond angle outliers are listed below:

Mol	Chain	Res	Type	Atoms	Z	Observed(°)	Ideal(°)
3	B	403	UAH	C03-C05-C06	-2.51	118.16	120.83
3	A	402	UAH	O12-P09-O08	2.49	113.37	106.73
3	B	403	UAH	O08-C07-C06	-2.34	103.43	109.35
3	A	402	UAH	O12-P09-O11	-2.23	99.13	107.64
3	A	402	UAH	C03-C05-C06	-2.14	118.55	120.83

There are no chirality outliers.

5 of 10 torsion outliers are listed below:

Mol	Chain	Res	Type	Atoms
5	A	405	PEG	O2-C3-C4-O4
6	B	408	GOL	C1-C2-C3-O3
6	A	406	GOL	O1-C1-C2-C3
5	B	406	PEG	C1-C2-O2-C3
4	A	403	TRS	C2-C-C3-O3

There are no ring outliers.

4 monomers are involved in 4 short contacts:

Mol	Chain	Res	Type	Clashes	Symm-Clashes
8	B	401	CO2	1	0
5	A	405	PEG	1	0
3	B	403	UAH	2	0
4	B	404	TRS	1	0

5.7 Other polymers [i](#)

There are no such residues in this entry.

5.8 Polymer linkage issues [i](#)

There are no chain breaks in this entry.

6 Fit of model and data [i](#)

6.1 Protein, DNA and RNA chains [i](#)

In the following table, the column labelled ‘#RSRZ> 2’ contains the number (and percentage) of RSRZ outliers, followed by percent RSRZ outliers for the chain as percentile scores relative to all X-ray entries and entries of similar resolution. The OWAB column contains the minimum, median, 95th percentile and maximum values of the occupancy-weighted average B-factor per residue. The column labelled ‘Q< 0.9’ lists the number of (and percentage) of residues with an average occupancy less than 0.9.

Mol	Chain	Analysed	<RSRZ>	#RSRZ>2	OWAB(Å ²)	Q<0.9
1	A	386/394 (97%)	-0.46	2 (0%) 91 92	17, 26, 49, 87	0
1	B	386/394 (97%)	-0.38	2 (0%) 91 92	15, 26, 50, 82	0
All	All	772/788 (97%)	-0.42	4 (0%) 91 92	15, 26, 50, 87	0

All (4) RSRZ outliers are listed below:

Mol	Chain	Res	Type	RSRZ
1	A	386	LYS	3.4
1	A	2	ILE	2.8
1	B	386	LYS	2.5
1	B	199	GLY	2.2

6.2 Non-standard residues in protein, DNA, RNA chains [i](#)

There are no non-standard protein/DNA/RNA residues in this entry.

6.3 Carbohydrates [i](#)

There are no carbohydrates in this entry.

6.4 Ligands [i](#)

In the following table, the Atoms column lists the number of modelled atoms in the group and the number defined in the chemical component dictionary. The B-factors column lists the minimum, median, 95th percentile and maximum values of B factors of atoms in the group. The column labelled ‘Q< 0.9’ lists the number of atoms with occupancy less than 0.9.

Mol	Type	Chain	Res	Atoms	RSCC	RSR	B-factors(Å ²)	Q<0.9
7	MG	B	414	1/1	0.58	0.21	72,72,72,72	0

Continued on next page...

Continued from previous page...

Mol	Type	Chain	Res	Atoms	RSCC	RSR	B-factors(\AA^2)	Q<0.9
8	CO2	B	401	3/3	0.67	0.24	30,30,33,36	3
8	CO2	B	405	3/3	0.69	0.22	46,46,53,53	0
6	GOL	B	408	6/6	0.71	0.21	68,71,75,77	0
7	MG	A	417	1/1	0.72	0.09	65,65,65,65	0
7	MG	B	420	1/1	0.74	0.11	68,68,68,68	0
7	MG	A	411	1/1	0.75	0.12	64,64,64,64	0
7	MG	B	418	1/1	0.80	0.14	55,55,55,55	0
7	MG	A	410	1/1	0.81	0.10	56,56,56,56	0
7	MG	B	412	1/1	0.81	0.13	66,66,66,66	1
5	PEG	B	407	7/7	0.81	0.16	51,56,56,57	0
5	PEG	B	406	7/7	0.82	0.20	55,58,58,58	0
4	TRS	A	403	8/8	0.83	0.14	28,34,41,49	0
6	GOL	A	406	6/6	0.83	0.13	61,65,66,67	0
7	MG	B	417	1/1	0.84	0.13	55,55,55,55	0
4	TRS	B	404	8/8	0.85	0.14	26,35,46,52	0
7	MG	A	418	1/1	0.87	0.10	55,55,55,55	0
5	PEG	A	404	7/7	0.88	0.10	46,51,59,61	0
7	MG	B	409	1/1	0.90	0.11	43,43,43,43	0
5	PEG	A	405	7/7	0.91	0.17	46,47,55,56	0
7	MG	A	413	1/1	0.92	0.11	59,59,59,59	1
7	MG	A	415	1/1	0.92	0.12	63,63,63,63	0
7	MG	B	421	1/1	0.93	0.12	45,45,45,45	0
2	CL	B	410	1/1	0.94	0.05	41,41,41,41	0
3	UAH	A	402	14/14	0.94	0.16	11,33,40,41	14
3	UAH	B	403	14/14	0.94	0.15	9,31,35,38	14
7	MG	B	413	1/1	0.95	0.14	55,55,55,55	0
7	MG	B	411	1/1	0.95	0.04	26,26,26,26	0
7	MG	A	409	1/1	0.96	0.05	34,34,34,34	0
7	MG	B	416	1/1	0.97	0.25	43,43,43,43	0
2	CL	A	401	1/1	0.97	0.08	26,26,26,26	0
2	CL	A	408	1/1	0.97	0.04	32,32,32,32	0
7	MG	B	415	1/1	0.97	0.20	50,50,50,50	0
2	CL	A	416	1/1	0.97	0.09	33,33,33,33	0
7	MG	A	414	1/1	0.97	0.08	54,54,54,54	0
2	CL	B	419	1/1	0.98	0.05	30,30,30,30	0
7	MG	A	412	1/1	0.98	0.11	32,32,32,32	0
2	CL	B	402	1/1	0.99	0.07	26,26,26,26	0
2	CL	A	407	1/1	0.99	0.06	28,28,28,28	0

6.5 Other polymers ⓘ

There are no such residues in this entry.