



wwPDB X-ray Structure Validation Summary Report ⓘ

Aug 21, 2020 – 02:11 AM BST

PDB ID : 4IUA
Title : Crystal Structure of the NK2 Fragment (31-290) of the mouse Hepatocyte Growth Factor/Scatter Factor
Authors : Tolbert, W.D.; Zhou, E.; Kovach, A.; Melcher, K.; Xu, H.E.
Deposited on : 2013-01-20
Resolution : 3.05 Å(reported)

This is a wwPDB X-ray Structure Validation Summary Report for a publicly released PDB entry.

We welcome your comments at validation@mail.wwpdb.org

A user guide is available at

<https://www.wwpdb.org/validation/2017/XrayValidationReportHelp>

with specific help available everywhere you see the ⓘ symbol.

The following versions of software and data (see [references ⓘ](#)) were used in the production of this report:

MolProbity : 4.02b-467
Mogul : 1.8.5 (274361), CSD as541be (2020)
Xtriage (Phenix) : 1.13
EDS : 2.13.1
Percentile statistics : 20191225.v01 (using entries in the PDB archive December 25th 2019)
Refmac : 5.8.0158
CCP4 : 7.0.044 (Gargrove)
Ideal geometry (proteins) : Engh & Huber (2001)
Ideal geometry (DNA, RNA) : Parkinson et al. (1996)
Validation Pipeline (wwPDB-VP) : 2.13.1

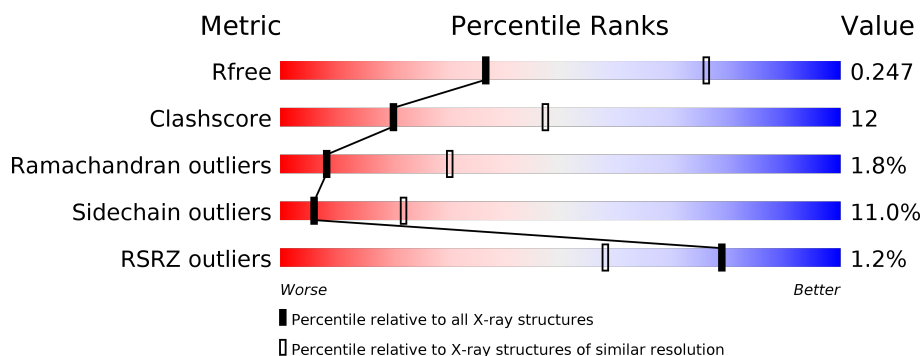
1 Overall quality at a glance

The following experimental techniques were used to determine the structure:

X-RAY DIFFRACTION

The reported resolution of this entry is 3.05 Å.

Percentile scores (ranging between 0-100) for global validation metrics of the entry are shown in the following graphic. The table shows the number of entries on which the scores are based.



Metric	Whole archive (#Entries)	Similar resolution (#Entries, resolution range(Å))
R_{free}	130704	1754 (3.10-3.02)
Clashscore	141614	1864 (3.10-3.02)
Ramachandran outliers	138981	1794 (3.10-3.02)
Sidechain outliers	138945	1793 (3.10-3.02)
RSRZ outliers	127900	1713 (3.10-3.02)

The table below summarises the geometric issues observed across the polymeric chains and their fit to the electron density. The red, orange, yellow and green segments on the lower bar indicate the fraction of residues that contain outliers for ≥ 3 , 2, 1 and 0 types of geometric quality criteria respectively. A grey segment represents the fraction of residues that are not modelled. The numeric value for each fraction is indicated below the corresponding segment, with a dot representing fractions $\leq 5\%$. The upper red bar (where present) indicates the fraction of residues that have poor fit to the electron density. The numeric value is given above the bar.

Mol	Chain	Length	Quality of chain
1	A	262	<div> <div>%</div> <div> <div></div> <div>65%</div> <div>28%</div> <div>• •</div> </div> </div>
1	B	262	<div> <div></div> <div>66%</div> <div>27%</div> <div>• •</div> </div>
1	C	262	<div> <div>%</div> <div> <div></div> <div>57%</div> <div>35%</div> <div>5%</div> <div>•</div> </div> </div>
1	D	262	<div> <div>%</div> <div> <div></div> <div>66%</div> <div>26%</div> <div>5%</div> <div>•</div> </div> </div>
1	E	262	<div> <div>2%</div> <div> <div></div> <div>67%</div> <div>26%</div> <div>• •</div> </div> </div>
1	F	262	<div> <div>3%</div> <div> <div></div> <div>64%</div> <div>28%</div> <div>• • •</div> </div> </div>

Continued on next page...

Continued from previous page...

Mol	Chain	Length	Quality of chain
1	G	262	
1	H	262	

The following table lists non-polymeric compounds, carbohydrate monomers and non-standard residues in protein, DNA, RNA chains that are outliers for geometric or electron-density-fit criteria:

Mol	Type	Chain	Res	Chirality	Geometry	Clashes	Electron density
3	SO4	D	1002	-	-	-	X

2 Entry composition [i](#)

There are 3 unique types of molecules in this entry. The entry contains 16628 atoms, of which 0 are hydrogens and 0 are deuteriums.

In the tables below, the ZeroOcc column contains the number of atoms modelled with zero occupancy, the AltConf column contains the number of residues with at least one atom in alternate conformation and the Trace column contains the number of residues modelled with at most 2 atoms.

- Molecule 1 is a protein called Hepatocyte growth factor.

Mol	Chain	Residues	Atoms					ZeroOcc	AltConf	Trace
1	A	254	Total	C	N	O	S	0	0	0
			2068	1293	369	386	20			
1	B	254	Total	C	N	O	S	0	0	0
			2068	1293	369	386	20			
1	C	254	Total	C	N	O	S	0	0	0
			2068	1293	369	386	20			
1	D	254	Total	C	N	O	S	0	0	0
			2068	1293	369	386	20			
1	E	254	Total	C	N	O	S	0	0	0
			2068	1293	369	386	20			
1	F	254	Total	C	N	O	S	0	0	0
			2068	1293	369	386	20			
1	G	246	Total	C	N	O	S	0	0	0
			1995	1249	351	375	20			
1	H	246	Total	C	N	O	S	0	0	0
			2000	1251	356	373	20			

There are 24 discrepancies between the modelled and reference sequences:

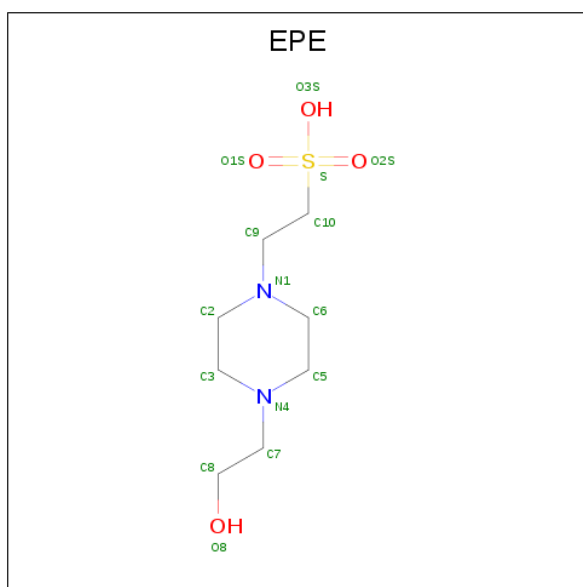
Chain	Residue	Modelled	Actual	Comment	Reference
A	29	GLY	-	EXPRESSION TAG	UNP Q08048
A	30	SER	-	EXPRESSION TAG	UNP Q08048
A	215	ALA	CYS	ENGINEERED MUTATION	UNP Q08048
B	29	GLY	-	EXPRESSION TAG	UNP Q08048
B	30	SER	-	EXPRESSION TAG	UNP Q08048
B	215	ALA	CYS	ENGINEERED MUTATION	UNP Q08048
C	29	GLY	-	EXPRESSION TAG	UNP Q08048
C	30	SER	-	EXPRESSION TAG	UNP Q08048
C	215	ALA	CYS	ENGINEERED MUTATION	UNP Q08048
D	29	GLY	-	EXPRESSION TAG	UNP Q08048
D	30	SER	-	EXPRESSION TAG	UNP Q08048
D	215	ALA	CYS	ENGINEERED MUTATION	UNP Q08048
E	29	GLY	-	EXPRESSION TAG	UNP Q08048

Continued on next page...

Continued from previous page...

Chain	Residue	Modelled	Actual	Comment	Reference
E	30	SER	-	EXPRESSION TAG	UNP Q08048
E	215	ALA	CYS	ENGINEERED MUTATION	UNP Q08048
F	29	GLY	-	EXPRESSION TAG	UNP Q08048
F	30	SER	-	EXPRESSION TAG	UNP Q08048
F	215	ALA	CYS	ENGINEERED MUTATION	UNP Q08048
G	29	GLY	-	EXPRESSION TAG	UNP Q08048
G	30	SER	-	EXPRESSION TAG	UNP Q08048
G	215	ALA	CYS	ENGINEERED MUTATION	UNP Q08048
H	29	GLY	-	EXPRESSION TAG	UNP Q08048
H	30	SER	-	EXPRESSION TAG	UNP Q08048
H	215	ALA	CYS	ENGINEERED MUTATION	UNP Q08048

- Molecule 2 is 4-(2-HYDROXYETHYL)-1-PIPERAZINE ETHANESULFONIC ACID (three-letter code: EPE) (formula: C₈H₁₈N₂O₄S).



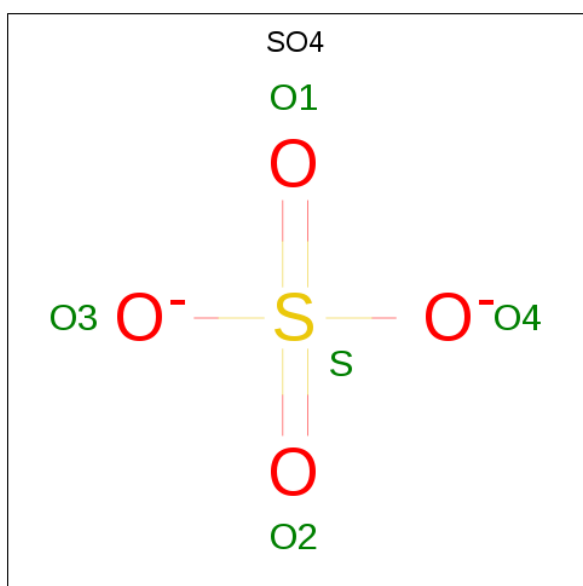
Mol	Chain	Residues	Atoms					ZeroOcc	AltConf
2	A	1	Total	C	N	O	S	0	0
			15	8	2	4	1		
2	B	1	Total	C	N	O	S	0	0
			15	8	2	4	1		
2	B	1	Total	C	N	O	S	0	0
			15	8	2	4	1		
2	C	1	Total	C	N	O	S	0	0
			15	8	2	4	1		
2	C	1	Total	C	N	O	S	0	0
			15	8	2	4	1		

Continued on next page...

Continued from previous page...

Mol	Chain	Residues	Atoms					ZeroOcc	AltConf
2	D	1	Total	C	N	O	S	0	0
			15	8	2	4	1		
2	E	1	Total	C	N	O	S	0	0
			15	8	2	4	1		
2	F	1	Total	C	N	O	S	0	0
			15	8	2	4	1		
2	G	1	Total	C	N	O	S	0	0
			15	8	2	4	1		
2	H	1	Total	C	N	O	S	0	0
			15	8	2	4	1		

- Molecule 3 is SULFATE ION (three-letter code: SO4) (formula: O₄S).



Mol	Chain	Residues	Atoms			ZeroOcc	AltConf
3	A	1	Total	O	S	0	0
			5	4	1		
3	A	1	Total	O	S	0	0
			5	4	1		
3	B	1	Total	O	S	0	0
			5	4	1		
3	B	1	Total	O	S	0	0
			5	4	1		
3	B	1	Total	O	S	0	0
			5	4	1		
3	C	1	Total	O	S	0	0
			5	4	1		

Continued on next page...

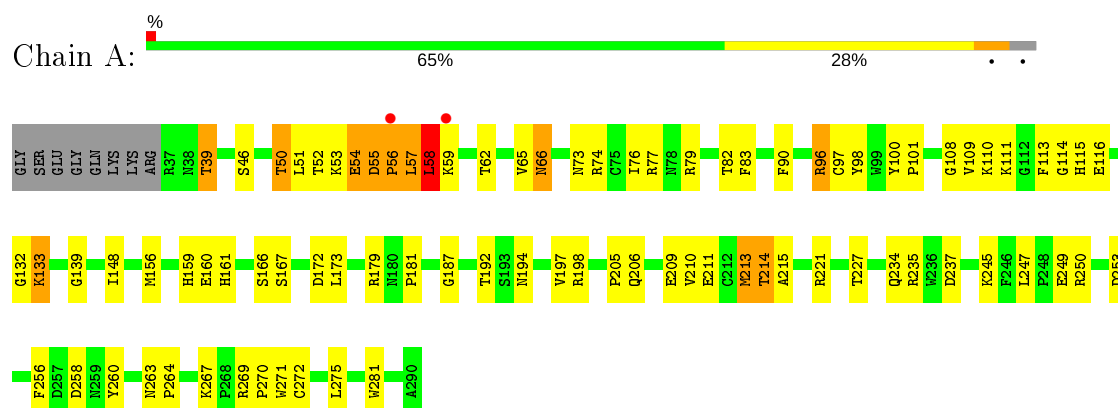
Continued from previous page...

Mol	Chain	Residues	Atoms			ZeroOcc	AltConf
3	D	1	Total	O	S	0	0
			5	4	1		
3	D	1	Total	O	S	0	0
			5	4	1		
3	D	1	Total	O	S	0	0
			5	4	1		
3	F	1	Total	O	S	0	0
			5	4	1		
3	F	1	Total	O	S	0	0
			5	4	1		
3	F	1	Total	O	S	0	0
			5	4	1		
3	G	1	Total	O	S	0	0
			5	4	1		
3	G	1	Total	O	S	0	0
			5	4	1		
3	H	1	Total	O	S	0	0
			5	4	1		

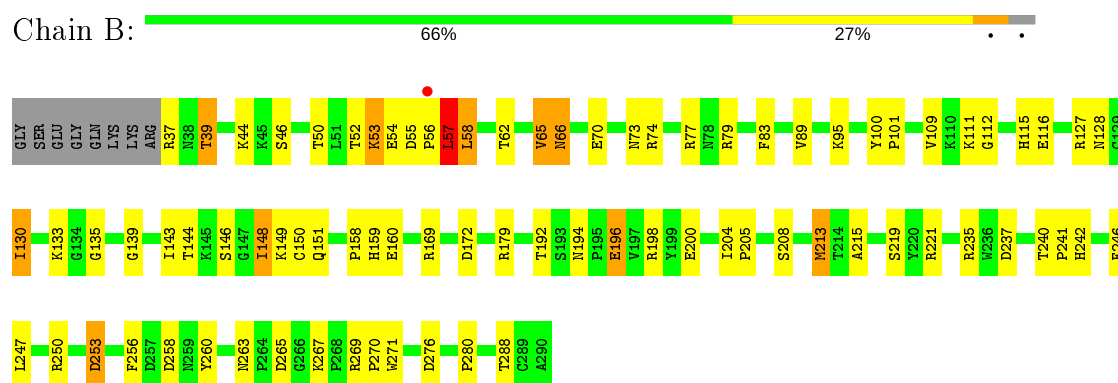
3 Residue-property plots

These plots are drawn for all protein, RNA, DNA and oligosaccharide chains in the entry. The first graphic for a chain summarises the proportions of the various outlier classes displayed in the second graphic. The second graphic shows the sequence view annotated by issues in geometry and electron density. Residues are color-coded according to the number of geometric quality criteria for which they contain at least one outlier: green = 0, yellow = 1, orange = 2 and red = 3 or more. A red dot above a residue indicates a poor fit to the electron density ($RSRZ > 2$). Stretches of 2 or more consecutive residues without any outlier are shown as a green connector. Residues present in the sample, but not in the model, are shown in grey.

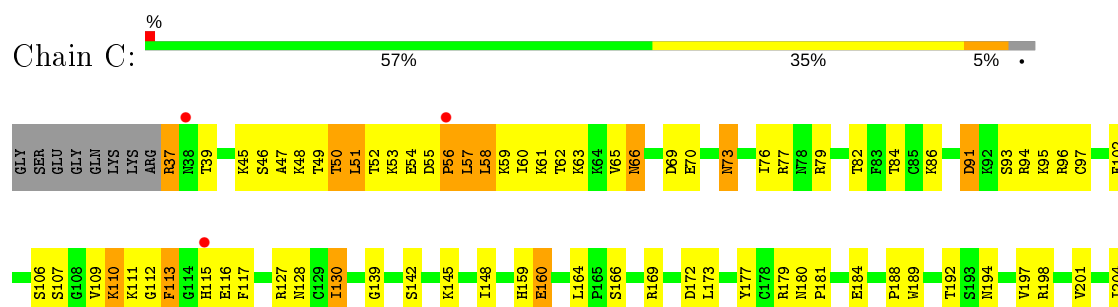
• Molecule 1: Hepatocyte growth factor



• Molecule 1: Hepatocyte growth factor



• Molecule 1: Hepatocyte growth factor





4 Data and refinement statistics

Property	Value	Source
Space group	P 1 21 1	Depositor
Cell constants a, b, c, α , β , γ	92.62Å 127.33Å 129.60Å 90.00° 90.25° 90.00°	Depositor
Resolution (Å)	29.77 – 3.05 29.78 – 3.04	Depositor EDS
% Data completeness (in resolution range)	99.5 (29.77-3.05) 99.5 (29.78-3.04)	Depositor EDS
R_{merge}	0.13	Depositor
R_{sym}	(Not available)	Depositor
$\langle I/\sigma(I) \rangle$ ¹	2.62 (at 3.06Å)	Xtriage
Refinement program	PHENIX 1.8_1069, CNS	Depositor
R, R_{free}	0.176 , 0.245 0.178 , 0.247	Depositor DCC
R_{free} test set	5878 reflections (10.18%)	wwPDB-VP
Wilson B-factor (Å ²)	70.7	Xtriage
Anisotropy	0.226	Xtriage
Bulk solvent k_{sol} (e/Å ³), B_{sol} (Å ²)	0.31 , 66.3	EDS
L-test for twinning ²	$\langle L \rangle = 0.47$, $\langle L^2 \rangle = 0.30$	Xtriage
Estimated twinning fraction	0.098 for -h,l,k 0.148 for -h,-l,-k 0.107 for h,-k,-l	Xtriage
F_o, F_c correlation	0.94	EDS
Total number of atoms	16628	wwPDB-VP
Average B, all atoms (Å ²)	58.0	wwPDB-VP

Xtriage's analysis on translational NCS is as follows: *The largest off-origin peak in the Patterson function is 4.11% of the height of the origin peak. No significant pseudotranslation is detected.*

¹Intensities estimated from amplitudes.

²Theoretical values of $\langle |L| \rangle$, $\langle L^2 \rangle$ for acentric reflections are 0.5, 0.333 respectively for untwinned datasets, and 0.375, 0.2 for perfectly twinned datasets.

5 Model quality [i](#)

5.1 Standard geometry [i](#)

Bond lengths and bond angles in the following residue types are not validated in this section: EPE, SO4

The Z score for a bond length (or angle) is the number of standard deviations the observed value is removed from the expected value. A bond length (or angle) with $|Z| > 5$ is considered an outlier worth inspection. RMSZ is the root-mean-square of all Z scores of the bond lengths (or angles).

Mol	Chain	Bond lengths		Bond angles	
		RMSZ	# Z >5	RMSZ	# Z >5
1	A	0.51	0/2129	0.64	0/2871
1	B	0.57	0/2129	0.65	0/2871
1	C	0.50	0/2129	0.65	0/2871
1	D	0.44	0/2129	0.58	0/2871
1	E	0.45	0/2129	0.60	0/2871
1	F	0.47	0/2129	0.63	0/2871
1	G	0.43	0/2053	0.56	0/2768
1	H	0.40	0/2059	0.55	0/2775
All	All	0.47	0/16886	0.61	0/22769

There are no bond length outliers.

There are no bond angle outliers.

There are no chirality outliers.

There are no planarity outliers.

5.2 Too-close contacts [i](#)

In the following table, the Non-H and H(model) columns list the number of non-hydrogen atoms and hydrogen atoms in the chain respectively. The H(added) column lists the number of hydrogen atoms added and optimized by MolProbity. The Clashes column lists the number of clashes within the asymmetric unit, whereas Symm-Clashes lists symmetry related clashes.

Mol	Chain	Non-H	H(model)	H(added)	Clashes	Symm-Clashes
1	A	2068	0	1951	54	0
1	B	2068	0	1951	45	0
1	C	2068	0	1951	62	0
1	D	2068	0	1951	52	0
1	E	2068	0	1951	55	0

Continued on next page...

Continued from previous page...

Mol	Chain	Non-H	H(model)	H(added)	Clashes	Symm-Clashes
1	F	2068	0	1951	54	0
1	G	1995	0	1875	54	0
1	H	2000	0	1879	40	0
2	A	15	0	18	2	0
2	B	30	0	34	1	0
2	C	30	0	34	3	0
2	D	15	0	17	1	0
2	E	15	0	17	1	0
2	F	15	0	17	0	0
2	G	15	0	17	2	0
2	H	15	0	17	0	0
3	A	10	0	0	0	0
3	B	15	0	0	0	0
3	C	5	0	0	0	0
3	D	15	0	0	1	0
3	F	15	0	0	1	0
3	G	10	0	0	1	0
3	H	5	0	0	1	0
All	All	16628	0	15631	402	0

The all-atom clashscore is defined as the number of clashes found per 1000 atoms (including hydrogen atoms). The all-atom clashscore for this structure is 12.

The worst 5 of 402 close contacts within the same asymmetric unit are listed below, sorted by their clash magnitude.

Atom-1	Atom-2	Interatomic distance (Å)	Clash overlap (Å)
1:C:148:ILE:HG21	1:C:192:THR:HG23	1.51	0.93
1:G:143:ILE:HG23	1:G:147:GLY:HA2	1.51	0.91
1:B:139:GLY:O	1:B:179:ARG:NH2	2.04	0.90
1:C:139:GLY:O	1:C:179:ARG:NH2	2.04	0.90
1:A:192:THR:HG22	1:A:194:ASN:H	1.38	0.87

There are no symmetry-related clashes.

5.3 Torsion angles ⓘ

5.3.1 Protein backbone ⓘ

In the following table, the Percentiles column shows the percent Ramachandran outliers of the chain as a percentile score with respect to all X-ray entries followed by that with respect to entries of similar resolution.

The Analysed column shows the number of residues for which the backbone conformation was analysed, and the total number of residues.

Mol	Chain	Analysed	Favoured	Allowed	Outliers	Percentiles	
1	A	252/262 (96%)	224 (89%)	22 (9%)	6 (2%)	6	23
1	B	252/262 (96%)	227 (90%)	21 (8%)	4 (2%)	9	33
1	C	252/262 (96%)	223 (88%)	25 (10%)	4 (2%)	9	33
1	D	252/262 (96%)	223 (88%)	24 (10%)	5 (2%)	7	27
1	E	252/262 (96%)	223 (88%)	27 (11%)	2 (1%)	19	50
1	F	252/262 (96%)	222 (88%)	24 (10%)	6 (2%)	6	23
1	G	240/262 (92%)	210 (88%)	26 (11%)	4 (2%)	9	32
1	H	242/262 (92%)	225 (93%)	12 (5%)	5 (2%)	7	26
All	All	1994/2096 (95%)	1777 (89%)	181 (9%)	36 (2%)	8	30

5 of 36 Ramachandran outliers are listed below:

Mol	Chain	Res	Type
1	A	57	LEU
1	B	58	LEU
1	C	57	LEU
1	C	66	ASN
1	C	241	PRO

5.3.2 Protein sidechains ⓘ

In the following table, the Percentiles column shows the percent sidechain outliers of the chain as a percentile score with respect to all X-ray entries followed by that with respect to entries of similar resolution.

The Analysed column shows the number of residues for which the sidechain conformation was analysed, and the total number of residues.

Mol	Chain	Analysed	Rotameric	Outliers	Percentiles	
1	A	229/235 (97%)	207 (90%)	22 (10%)	8	27
1	B	229/235 (97%)	201 (88%)	28 (12%)	5	17
1	C	229/235 (97%)	196 (86%)	33 (14%)	3	12
1	D	229/235 (97%)	203 (89%)	26 (11%)	5	20
1	E	229/235 (97%)	204 (89%)	25 (11%)	6	22
1	F	229/235 (97%)	203 (89%)	26 (11%)	5	20

Continued on next page...

Continued from previous page...

Mol	Chain	Analysed	Rotameric	Outliers	Percentiles	
1	G	222/235 (94%)	202 (91%)	20 (9%)	9	30
1	H	221/235 (94%)	202 (91%)	19 (9%)	10	33
All	All	1817/1880 (97%)	1618 (89%)	199 (11%)	6	22

5 of 199 residues with a non-rotameric sidechain are listed below:

Mol	Chain	Res	Type
1	D	83	PHE
1	E	51	LEU
1	H	65	VAL
1	D	115	HIS
1	D	209	GLU

Some sidechains can be flipped to improve hydrogen bonding and reduce clashes. All (5) such sidechains are listed below:

Mol	Chain	Res	Type
1	A	206	GLN
1	A	242	HIS
1	D	159	HIS
1	E	242	HIS
1	H	194	ASN

5.3.3 RNA [i](#)

There are no RNA molecules in this entry.

5.4 Non-standard residues in protein, DNA, RNA chains [i](#)

There are no non-standard protein/DNA/RNA residues in this entry.

5.5 Carbohydrates [i](#)

There are no monosaccharides in this entry.

5.6 Ligand geometry [i](#)

25 ligands are modelled in this entry.

In the following table, the Counts columns list the number of bonds (or angles) for which Mogul statistics could be retrieved, the number of bonds (or angles) that are observed in the model and the number of bonds (or angles) that are defined in the Chemical Component Dictionary. The Link column lists molecule types, if any, to which the group is linked. The Z score for a bond length (or angle) is the number of standard deviations the observed value is removed from the expected value. A bond length (or angle) with $|Z| > 2$ is considered an outlier worth inspection. RMSZ is the root-mean-square of all Z scores of the bond lengths (or angles).

Mol	Type	Chain	Res	Link	Bond lengths			Bond angles		
					Counts	RMSZ	# Z > 2	Counts	RMSZ	# Z > 2
2	EPE	E	1001	-	15,15,15	0.91	1 (6%)	18,20,20	1.99	7 (38%)
3	SO4	A	1003	-	4,4,4	0.17	0	6,6,6	0.19	0
3	SO4	D	1002	-	4,4,4	0.14	0	6,6,6	0.10	0
2	EPE	H	1001	-	15,15,15	0.85	1 (6%)	18,20,20	2.37	6 (33%)
3	SO4	H	1002	-	4,4,4	0.21	0	6,6,6	0.25	0
2	EPE	A	1001	-	15,15,15	0.96	1 (6%)	18,20,20	2.64	10 (55%)
2	EPE	G	1001	-	15,15,15	0.82	1 (6%)	18,20,20	1.92	6 (33%)
3	SO4	F	1004	-	4,4,4	0.13	0	6,6,6	0.09	0
2	EPE	B	1001	-	15,15,15	0.93	1 (6%)	18,20,20	2.24	9 (50%)
3	SO4	G	1003	-	4,4,4	0.15	0	6,6,6	0.07	0
3	SO4	A	1002	-	4,4,4	0.19	0	6,6,6	0.27	0
2	EPE	B	1005	-	15,15,15	0.89	1 (6%)	18,20,20	2.00	5 (27%)
2	EPE	F	1001	-	15,15,15	0.77	1 (6%)	18,20,20	2.14	7 (38%)
3	SO4	B	1003	-	4,4,4	0.18	0	6,6,6	0.31	0
3	SO4	B	1004	-	4,4,4	0.14	0	6,6,6	0.19	0
3	SO4	C	1003	-	4,4,4	0.17	0	6,6,6	0.18	0
3	SO4	D	1004	-	4,4,4	0.13	0	6,6,6	0.13	0
3	SO4	F	1002	-	4,4,4	0.20	0	6,6,6	0.12	0
3	SO4	G	1002	-	4,4,4	0.15	0	6,6,6	0.12	0
3	SO4	B	1002	-	4,4,4	0.18	0	6,6,6	0.11	0
3	SO4	D	1003	-	4,4,4	0.16	0	6,6,6	0.12	0
2	EPE	C	1002	-	15,15,15	0.78	1 (6%)	18,20,20	2.24	6 (33%)
3	SO4	F	1003	-	4,4,4	0.14	0	6,6,6	0.09	0
2	EPE	C	1001	-	15,15,15	0.78	0	18,20,20	2.07	6 (33%)
2	EPE	D	1001	-	15,15,15	0.74	1 (6%)	18,20,20	2.02	5 (27%)

In the following table, the Chirals column lists the number of chiral outliers, the number of chiral centers analysed, the number of these observed in the model and the number defined in the Chemical Component Dictionary. Similar counts are reported in the Torsion and Rings columns. '-' means no outliers of that kind were identified.

Mol	Type	Chain	Res	Link	Chirals	Torsions	Rings
2	EPE	A	1001	-	-	5/9/19/19	0/1/1/1
2	EPE	G	1001	-	-	5/9/19/19	0/1/1/1
2	EPE	D	1001	-	-	4/9/19/19	0/1/1/1
2	EPE	E	1001	-	-	4/9/19/19	0/1/1/1
2	EPE	B	1001	-	-	3/9/19/19	0/1/1/1
2	EPE	H	1001	-	-	2/9/19/19	0/1/1/1
2	EPE	C	1002	-	-	2/9/19/19	0/1/1/1
2	EPE	B	1005	-	-	0/9/19/19	0/1/1/1
2	EPE	F	1001	-	-	5/9/19/19	0/1/1/1
2	EPE	C	1001	-	-	3/9/19/19	0/1/1/1

The worst 5 of 9 bond length outliers are listed below:

Mol	Chain	Res	Type	Atoms	Z	Observed(Å)	Ideal(Å)
2	B	1005	EPE	C10-S	3.01	1.81	1.77
2	A	1001	EPE	C10-S	3.00	1.81	1.77
2	E	1001	EPE	C10-S	2.73	1.81	1.77
2	H	1001	EPE	C10-S	2.58	1.81	1.77
2	G	1001	EPE	C10-S	2.58	1.81	1.77

The worst 5 of 67 bond angle outliers are listed below:

Mol	Chain	Res	Type	Atoms	Z	Observed(°)	Ideal(°)
2	C	1002	EPE	C5-N4-C3	6.37	123.17	108.83
2	H	1001	EPE	O2S-S-C10	6.01	114.15	106.92
2	D	1001	EPE	O3S-S-C10	5.06	113.96	105.77
2	H	1001	EPE	C5-N4-C3	4.77	119.56	108.83
2	F	1001	EPE	C5-N4-C3	4.68	119.37	108.83

There are no chirality outliers.

5 of 33 torsion outliers are listed below:

Mol	Chain	Res	Type	Atoms
2	E	1001	EPE	C9-C10-S-O2S
2	A	1001	EPE	C9-C10-S-O2S
2	A	1001	EPE	C9-C10-S-O3S
2	G	1001	EPE	C8-C7-N4-C5
2	G	1001	EPE	C9-C10-S-O2S

There are no ring outliers.

11 monomers are involved in 14 short contacts:

Mol	Chain	Res	Type	Clashes	Symm-Clashes
2	E	1001	EPE	1	0
3	D	1002	SO4	1	0
3	H	1002	SO4	1	0
2	A	1001	EPE	2	0
2	G	1001	EPE	2	0
3	F	1004	SO4	1	0
2	B	1005	EPE	1	0
3	G	1002	SO4	1	0
2	C	1002	EPE	1	0
2	C	1001	EPE	2	0
2	D	1001	EPE	1	0

5.7 Other polymers [i](#)

There are no such residues in this entry.

5.8 Polymer linkage issues [i](#)

There are no chain breaks in this entry.

6 Fit of model and data ⓘ

6.1 Protein, DNA and RNA chains ⓘ

In the following table, the column labelled ‘#RSRZ> 2’ contains the number (and percentage) of RSRZ outliers, followed by percent RSRZ outliers for the chain as percentile scores relative to all X-ray entries and entries of similar resolution. The OWAB column contains the minimum, median, 95th percentile and maximum values of the occupancy-weighted average B-factor per residue. The column labelled ‘Q< 0.9’ lists the number of (and percentage) of residues with an average occupancy less than 0.9.

Mol	Chain	Analysed	<RSRZ>	#RSRZ>2		OWAB(Å ²)	Q<0.9
1	A	254/262 (96%)	-0.49	2 (0%)	86 70	15, 37, 91, 136	0
1	B	254/262 (96%)	-0.51	1 (0%)	92 82	16, 36, 92, 149	0
1	C	254/262 (96%)	-0.39	3 (1%)	79 58	14, 44, 98, 135	0
1	D	254/262 (96%)	-0.40	2 (0%)	86 70	24, 52, 107, 152	0
1	E	254/262 (96%)	-0.28	5 (1%)	65 41	23, 62, 112, 133	0
1	F	254/262 (96%)	-0.31	7 (2%)	53 28	16, 54, 105, 133	0
1	G	246/262 (93%)	-0.28	3 (1%)	79 58	37, 71, 120, 137	0
1	H	246/262 (93%)	-0.24	1 (0%)	92 82	32, 64, 106, 129	0
All	All	2016/2096 (96%)	-0.36	24 (1%)	79 58	14, 54, 108, 152	0

The worst 5 of 24 RSRZ outliers are listed below:

Mol	Chain	Res	Type	RSRZ
1	F	66	ASN	3.7
1	F	57	LEU	3.4
1	E	56	PRO	3.2
1	E	290	ALA	2.9
1	F	56	PRO	2.9

6.2 Non-standard residues in protein, DNA, RNA chains ⓘ

There are no non-standard protein/DNA/RNA residues in this entry.

6.3 Carbohydrates ⓘ

There are no monosaccharides in this entry.

6.4 Ligands ⓘ

In the following table, the Atoms column lists the number of modelled atoms in the group and the number defined in the chemical component dictionary. The B-factors column lists the minimum, median, 95th percentile and maximum values of B factors of atoms in the group. The column labelled 'Q<0.9' lists the number of atoms with occupancy less than 0.9.

Mol	Type	Chain	Res	Atoms	RSCC	RSR	B-factors(Å ²)	Q<0.9
3	SO4	F	1002	5/5	0.55	0.32	157,157,158,160	0
3	SO4	D	1002	5/5	0.72	0.43	204,204,205,207	0
3	SO4	F	1004	5/5	0.77	0.29	156,159,159,160	0
3	SO4	F	1003	5/5	0.81	0.34	140,142,143,143	0
3	SO4	B	1002	5/5	0.84	0.22	115,116,118,118	0
3	SO4	G	1002	5/5	0.90	0.21	107,109,110,111	0
3	SO4	D	1004	5/5	0.92	0.18	90,92,93,97	0
3	SO4	A	1002	5/5	0.93	0.17	68,70,78,85	0
3	SO4	G	1003	5/5	0.94	0.17	92,93,94,97	0
3	SO4	D	1003	5/5	0.95	0.12	70,76,78,80	0
3	SO4	H	1002	5/5	0.96	0.13	63,72,74,76	0
3	SO4	A	1003	5/5	0.96	0.18	58,63,66,68	0
2	EPE	B	1005	15/15	0.96	0.16	31,50,68,77	0
3	SO4	B	1003	5/5	0.96	0.12	57,64,74,81	0
3	SO4	B	1004	5/5	0.96	0.19	79,84,84,88	0
3	SO4	C	1003	5/5	0.96	0.14	81,83,86,89	0
2	EPE	G	1001	15/15	0.97	0.16	25,53,60,61	0
2	EPE	C	1002	15/15	0.97	0.16	29,49,64,68	0
2	EPE	H	1001	15/15	0.97	0.18	44,56,64,65	0
2	EPE	D	1001	15/15	0.97	0.24	36,53,58,61	0
2	EPE	F	1001	15/15	0.98	0.17	0,18,43,48	0
2	EPE	E	1001	15/15	0.98	0.16	12,24,31,31	0
2	EPE	A	1001	15/15	0.98	0.16	0,9,23,28	0
2	EPE	C	1001	15/15	0.98	0.16	4,13,29,30	0
2	EPE	B	1001	15/15	0.98	0.16	0,14,22,25	0

6.5 Other polymers ⓘ

There are no such residues in this entry.