



Full wwPDB X-ray Structure Validation Report ⓘ

Aug 6, 2020 – 10:51 PM BST

PDB ID : 5IUC
Title : Crystal structure of the GspB siglec domain with sialyl T antigen bound
Authors : Loukachevitch, L.V.; Fialkowski, K.P.; Wawrzak, Z.; Iverson, T.M.
Deposited on : 2016-03-17
Resolution : 1.25 Å(reported)

This is a Full wwPDB X-ray Structure Validation Report for a publicly released PDB entry.

We welcome your comments at validation@mail.wwpdb.org

A user guide is available at

<https://www.wwpdb.org/validation/2017/XrayValidationReportHelp>

with specific help available everywhere you see the ⓘ symbol.

The following versions of software and data (see [references ⓘ](#)) were used in the production of this report:

MolProbity : 4.02b-467
Mogul : 1.8.5 (274361), CSD as541be (2020)
Xtriage (Phenix) : 1.13
EDS : 2.13.1
Percentile statistics : 20191225.v01 (using entries in the PDB archive December 25th 2019)
Refmac : 5.8.0158
CCP4 : 7.0.044 (Gargrove)
Ideal geometry (proteins) : Engh & Huber (2001)
Ideal geometry (DNA, RNA) : Parkinson et al. (1996)
Validation Pipeline (wwPDB-VP) : 2.13.1

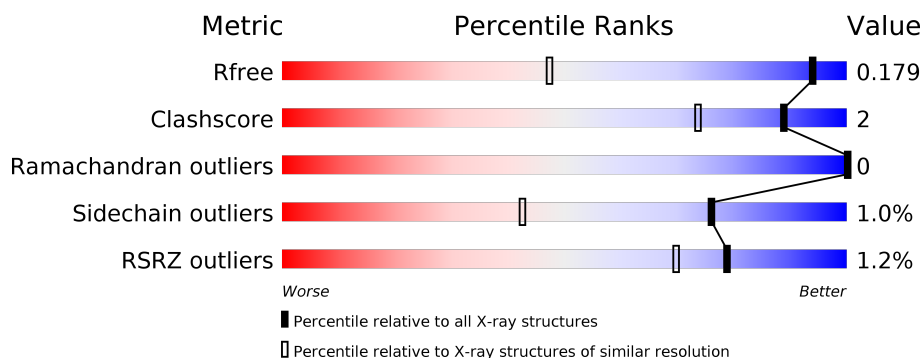
1 Overall quality at a glance

The following experimental techniques were used to determine the structure:

X-RAY DIFFRACTION

The reported resolution of this entry is 1.25 Å.

Percentile scores (ranging between 0-100) for global validation metrics of the entry are shown in the following graphic. The table shows the number of entries on which the scores are based.



Metric	Whole archive (#Entries)	Similar resolution (#Entries, resolution range(Å))
R_{free}	130704	1023 (1.28-1.24)
Clashscore	141614	1060 (1.28-1.24)
Ramachandran outliers	138981	1029 (1.28-1.24)
Sidechain outliers	138945	1028 (1.28-1.24)
RSRZ outliers	127900	1004 (1.28-1.24)

The table below summarises the geometric issues observed across the polymeric chains and their fit to the electron density. The red, orange, yellow and green segments on the lower bar indicate the fraction of residues that contain outliers for ≥ 3 , 2, 1 and 0 types of geometric quality criteria respectively. A grey segment represents the fraction of residues that are not modelled. The numeric value for each fraction is indicated below the corresponding segment, with a dot representing fractions $\leq 5\%$. The upper red bar (where present) indicates the fraction of residues that have poor fit to the electron density. The numeric value is given above the bar.

Mol	Chain	Length	Quality of chain
1	A	127	<div> <div>2%</div> <div> <div></div> <div>89%</div> <div>8%</div> <div></div> </div> </div>
1	B	127	<div> <div>%</div> <div> <div></div> <div>92%</div> <div>5%</div> <div></div> </div> </div>
2	C	3	<div> <div></div> <div>100%</div> </div>
2	D	3	<div> <div></div> <div> <div>67%</div> <div>33%</div> </div> </div>

2 Entry composition [i](#)

There are 4 unique types of molecules in this entry. The entry contains 4742 atoms, of which 2050 are hydrogens and 0 are deuteriums.

In the tables below, the ZeroOcc column contains the number of atoms modelled with zero occupancy, the AltConf column contains the number of residues with at least one atom in alternate conformation and the Trace column contains the number of residues modelled with at most 2 atoms.

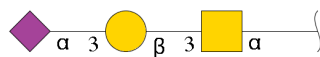
- Molecule 1 is a protein called Platelet binding protein GspB.

Mol	Chain	Residues	Atoms						ZeroOcc	AltConf	Trace
1	A	123	Total	C	H	N	O	S	0	8	0
			1988	631	987	171	197	2			
1	B	123	Total	C	H	N	O	S	0	6	0
			1981	627	979	176	197	2			

There are 10 discrepancies between the modelled and reference sequences:

Chain	Residue	Modelled	Actual	Comment	Reference
A	395	GLY	-	expression tag	UNP Q939N5
A	396	PRO	-	expression tag	UNP Q939N5
A	397	GLY	-	expression tag	UNP Q939N5
A	398	SER	-	expression tag	UNP Q939N5
A	444	SER	ASN	conflict	UNP Q939N5
B	395	GLY	-	expression tag	UNP Q939N5
B	396	PRO	-	expression tag	UNP Q939N5
B	397	GLY	-	expression tag	UNP Q939N5
B	398	SER	-	expression tag	UNP Q939N5
B	444	SER	ASN	conflict	UNP Q939N5

- Molecule 2 is an oligosaccharide called N-acetyl-alpha-neuraminic acid-(2-3)-beta-D-galactopyranose-(1-3)-2-acetamido-2-deoxy-alpha-D-galactopyranose.



Mol	Chain	Residues	Atoms						ZeroOcc	AltConf	Trace
2	C	3	Total	C	H	N	O		0	0	0
			88	25	42	2	19				
2	D	3	Total	C	H	N	O		0	0	0
			88	25	42	2	19				

- Molecule 3 is MAGNESIUM ION (three-letter code: MG) (formula: Mg).

Mol	Chain	Residues	Atoms		ZeroOcc	AltConf
3	B	1	Total	Mg	0	0
			1	1		
3	A	1	Total	Mg	0	0
			1	1		

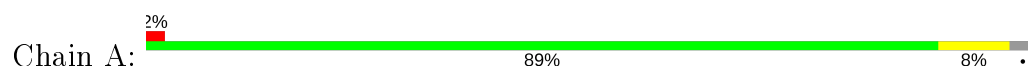
- Molecule 4 is water.

Mol	Chain	Residues	Atoms		ZeroOcc	AltConf
4	A	300	Total	O	0	0
			300	300		
4	B	295	Total	O	0	0
			295	295		

3 Residue-property plots [i](#)

These plots are drawn for all protein, RNA, DNA and oligosaccharide chains in the entry. The first graphic for a chain summarises the proportions of the various outlier classes displayed in the second graphic. The second graphic shows the sequence view annotated by issues in geometry and electron density. Residues are color-coded according to the number of geometric quality criteria for which they contain at least one outlier: green = 0, yellow = 1, orange = 2 and red = 3 or more. A red dot above a residue indicates a poor fit to the electron density ($RSRZ > 2$). Stretches of 2 or more consecutive residues without any outlier are shown as a green connector. Residues present in the sample, but not in the model, are shown in grey.

- Molecule 1: Platelet binding protein GspB



- Molecule 1: Platelet binding protein GspB



- Molecule 2: N-acetyl-alpha-neuraminic acid-(2-3)-beta-D-galactopyranose-(1-3)-2-acetamido-2-deoxy-alpha-D-galactopyranose



- Molecule 2: N-acetyl-alpha-neuraminic acid-(2-3)-beta-D-galactopyranose-(1-3)-2-acetamido-2-deoxy-alpha-D-galactopyranose



4 Data and refinement statistics

Property	Value	Source
Space group	P 21 21 2	Depositor
Cell constants a, b, c, α , β , γ	67.67Å 66.55Å 55.85Å 90.00° 90.00° 90.00°	Depositor
Resolution (Å)	29.86 – 1.25 29.86 – 1.25	Depositor EDS
% Data completeness (in resolution range)	95.7 (29.86-1.25) 95.7 (29.86-1.25)	Depositor EDS
R_{merge}	0.07	Depositor
R_{sym}	(Not available)	Depositor
$\langle I/\sigma(I) \rangle$ ¹	4.28 (at 1.25Å)	Xtriage
Refinement program	PHENIX 1.9_1692	Depositor
R, R_{free}	0.156 , 0.178 0.156 , 0.179	Depositor DCC
R_{free} test set	3212 reflections (4.80%)	wwPDB-VP
Wilson B-factor (Å ²)	12.1	Xtriage
Anisotropy	0.242	Xtriage
Bulk solvent k_{sol} (e/Å ³), B_{sol} (Å ²)	0.36 , 42.5	EDS
L-test for twinning ²	$\langle L \rangle = 0.50$, $\langle L^2 \rangle = 0.33$	Xtriage
Estimated twinning fraction	0.018 for k,h,-l	Xtriage
F_o, F_c correlation	0.98	EDS
Total number of atoms	4742	wwPDB-VP
Average B, all atoms (Å ²)	16.0	wwPDB-VP

Xtriage's analysis on translational NCS is as follows: *The largest off-origin peak in the Patterson function is 6.93% of the height of the origin peak. No significant pseudotranslation is detected.*

¹Intensities estimated from amplitudes.

²Theoretical values of $\langle |L| \rangle$, $\langle L^2 \rangle$ for acentric reflections are 0.5, 0.333 respectively for untwinned datasets, and 0.375, 0.2 for perfectly twinned datasets.

5 Model quality

5.1 Standard geometry

Bond lengths and bond angles in the following residue types are not validated in this section: SIA, GAL, MG, A2G

The Z score for a bond length (or angle) is the number of standard deviations the observed value is removed from the expected value. A bond length (or angle) with $|Z| > 5$ is considered an outlier worth inspection. RMSZ is the root-mean-square of all Z scores of the bond lengths (or angles).

Mol	Chain	Bond lengths		Bond angles	
		RMSZ	$\# Z > 5$	RMSZ	$\# Z > 5$
1	A	0.57	0/1043	0.76	2/1416 (0.1%)
1	B	0.61	0/1035	0.81	3/1406 (0.2%)
All	All	0.59	0/2078	0.78	5/2822 (0.2%)

There are no bond length outliers.

All (5) bond angle outliers are listed below:

Mol	Chain	Res	Type	Atoms	Z	Observed(°)	Ideal(°)
1	B	427	ASP	CB-CG-OD2	7.79	125.31	118.30
1	B	468	ARG	NE-CZ-NH2	-7.00	116.80	120.30
1	A	484	ARG	NE-CZ-NH2	-6.29	117.16	120.30
1	A	427	ASP	CB-CG-OD2	6.15	123.84	118.30
1	B	440	ARG	NE-CZ-NH2	-5.12	117.74	120.30

There are no chirality outliers.

There are no planarity outliers.

5.2 Too-close contacts

In the following table, the Non-H and H(model) columns list the number of non-hydrogen atoms and hydrogen atoms in the chain respectively. The H(added) column lists the number of hydrogen atoms added and optimized by MolProbity. The Clashes column lists the number of clashes within the asymmetric unit, whereas Symm-Clashes lists symmetry related clashes.

Mol	Chain	Non-H	H(model)	H(added)	Clashes	Symm-Clashes
1	A	1001	987	998	6	0
1	B	1002	979	979	2	0
2	C	46	42	37	1	0
2	D	46	42	37	1	0

Continued on next page...

Continued from previous page...

Mol	Chain	Non-H	H(model)	H(added)	Clashes	Symm-Clashes
3	A	1	0	0	0	0
3	B	1	0	0	0	0
4	A	300	0	0	3	9
4	B	295	0	0	1	7
All	All	2692	2050	2051	8	11

The all-atom clashscore is defined as the number of clashes found per 1000 atoms (including hydrogen atoms). The all-atom clashscore for this structure is 2.

All (8) close contacts within the same asymmetric unit are listed below, sorted by their clash magnitude.

Atom-1	Atom-2	Interatomic distance (Å)	Clash overlap (Å)
1:A:472[B]:ASN:OD1	4:A:701:HOH:O	1.97	0.82
1:B:399:ASP:N	4:B:703:HOH:O	2.32	0.62
1:A:449:ARG:HD3	4:A:756:HOH:O	2.11	0.51
1:A:421:TYR:OH	4:A:702:HOH:O	2.18	0.50
1:A:418[A]:SER:OG	1:A:472[A]:ASN:OD1	2.17	0.48
1:B:482:TYR:CZ	2:D:3:SIA:H112	2.52	0.45
1:A:482:TYR:CZ	2:C:3:SIA:H112	2.54	0.43
1:A:456:TYR:HA	1:A:468:ARG:O	2.20	0.42

All (11) symmetry-related close contacts are listed below. The label for Atom-2 includes the symmetry operator and encoded unit-cell translations to be applied.

Atom-1	Atom-2	Interatomic distance (Å)	Clash overlap (Å)
4:A:714:HOH:O	4:A:834:HOH:O[4_454]	2.02	0.18
4:B:930:HOH:O	4:B:930:HOH:O[2_455]	2.05	0.15
4:A:885:HOH:O	4:B:888:HOH:O[1_554]	2.07	0.13
4:A:742:HOH:O	4:A:901:HOH:O[4_454]	2.12	0.08
4:A:945:HOH:O	4:B:802:HOH:O[3_454]	2.13	0.07
4:B:934:HOH:O	4:B:947:HOH:O[3_445]	2.14	0.06
4:A:706:HOH:O	4:A:931:HOH:O[4_454]	2.15	0.05
4:A:978:HOH:O	4:B:750:HOH:O[2_455]	2.16	0.04
4:A:920:HOH:O	4:B:869:HOH:O[2_455]	2.16	0.04
4:A:819:HOH:O	4:A:901:HOH:O[4_454]	2.16	0.04
4:A:921:HOH:O	4:B:825:HOH:O[4_454]	2.17	0.03

5.3 Torsion angles

5.3.1 Protein backbone

In the following table, the Percentiles column shows the percent Ramachandran outliers of the chain as a percentile score with respect to all X-ray entries followed by that with respect to entries of similar resolution.

The Analysed column shows the number of residues for which the backbone conformation was analysed, and the total number of residues.

Mol	Chain	Analysed	Favoured	Allowed	Outliers	Percentiles	
1	A	128/127 (101%)	127 (99%)	1 (1%)	0	100	100
1	B	126/127 (99%)	125 (99%)	1 (1%)	0	100	100
All	All	254/254 (100%)	252 (99%)	2 (1%)	0	100	100

There are no Ramachandran outliers to report.

5.3.2 Protein sidechains

In the following table, the Percentiles column shows the percent sidechain outliers of the chain as a percentile score with respect to all X-ray entries followed by that with respect to entries of similar resolution.

The Analysed column shows the number of residues for which the sidechain conformation was analysed, and the total number of residues.

Mol	Chain	Analysed	Rotameric	Outliers	Percentiles	
1	A	113/107 (106%)	112 (99%)	1 (1%)	78	47
1	B	111/107 (104%)	110 (99%)	1 (1%)	78	47
All	All	224/214 (105%)	222 (99%)	2 (1%)	76	47

All (2) residues with a non-rotameric sidechain are listed below:

Mol	Chain	Res	Type
1	A	441	TRP
1	B	441	TRP

Some sidechains can be flipped to improve hydrogen bonding and reduce clashes. There are no such sidechains identified.

5.3.3 RNA ⓘ

There are no RNA molecules in this entry.

5.4 Non-standard residues in protein, DNA, RNA chains ⓘ

There are no non-standard protein/DNA/RNA residues in this entry.

5.5 Carbohydrates ⓘ

6 monosaccharides are modelled in this entry.

In the following table, the Counts columns list the number of bonds (or angles) for which Mogul statistics could be retrieved, the number of bonds (or angles) that are observed in the model and the number of bonds (or angles) that are defined in the Chemical Component Dictionary. The Link column lists molecule types, if any, to which the group is linked. The Z score for a bond length (or angle) is the number of standard deviations the observed value is removed from the expected value. A bond length (or angle) with $|Z| > 2$ is considered an outlier worth inspection. RMSZ is the root-mean-square of all Z scores of the bond lengths (or angles).

Mol	Type	Chain	Res	Link	Bond lengths			Bond angles		
					Counts	RMSZ	# $ Z > 2$	Counts	RMSZ	# $ Z > 2$
2	A2G	C	1	2	15,15,15	0.41	0	21,21,21	1.12	1 (4%)
2	GAL	C	2	2	11,11,12	1.02	1 (9%)	15,15,17	1.30	1 (6%)
2	SIA	C	3	2	17,20,21	0.64	0	21,28,31	1.06	0
2	A2G	D	1	2	15,15,15	0.49	0	21,21,21	1.02	2 (9%)
2	GAL	D	2	2	11,11,12	1.32	2 (18%)	15,15,17	1.26	1 (6%)
2	SIA	D	3	2	17,20,21	0.65	0	21,28,31	0.85	1 (4%)

In the following table, the Chirals column lists the number of chiral outliers, the number of chiral centers analysed, the number of these observed in the model and the number defined in the Chemical Component Dictionary. Similar counts are reported in the Torsion and Rings columns. '-' means no outliers of that kind were identified.

Mol	Type	Chain	Res	Link	Chirals	Torsions	Rings
2	A2G	C	1	2	-	0/6/26/26	0/1/1/1
2	GAL	C	2	2	-	2/2/19/22	0/1/1/1
2	SIA	C	3	2	-	0/14/34/38	0/1/1/1
2	A2G	D	1	2	-	0/6/26/26	0/1/1/1
2	GAL	D	2	2	-	2/2/19/22	0/1/1/1
2	SIA	D	3	2	-	0/14/34/38	0/1/1/1

All (3) bond length outliers are listed below:

Mol	Chain	Res	Type	Atoms	Z	Observed(Å)	Ideal(Å)
2	D	2	GAL	C2-C3	2.29	1.55	1.52
2	C	2	GAL	O5-C1	-2.23	1.40	1.43
2	D	2	GAL	O5-C1	-2.18	1.40	1.43

All (6) bond angle outliers are listed below:

Mol	Chain	Res	Type	Atoms	Z	Observed(°)	Ideal(°)
2	C	1	A2G	C3-C2-N2	-3.95	103.15	110.62
2	D	1	A2G	C3-C2-N2	-2.74	105.44	110.62
2	D	2	GAL	C1-C2-C3	2.67	112.94	109.67
2	D	1	A2G	O1-C1-C2	2.40	114.20	109.22
2	C	2	GAL	C1-O5-C5	-2.15	109.28	112.19
2	D	3	SIA	C3-C2-C1	2.03	116.35	111.93

There are no chirality outliers.

All (4) torsion outliers are listed below:

Mol	Chain	Res	Type	Atoms
2	D	2	GAL	O5-C5-C6-O6
2	C	2	GAL	O5-C5-C6-O6
2	D	2	GAL	C4-C5-C6-O6
2	C	2	GAL	C4-C5-C6-O6

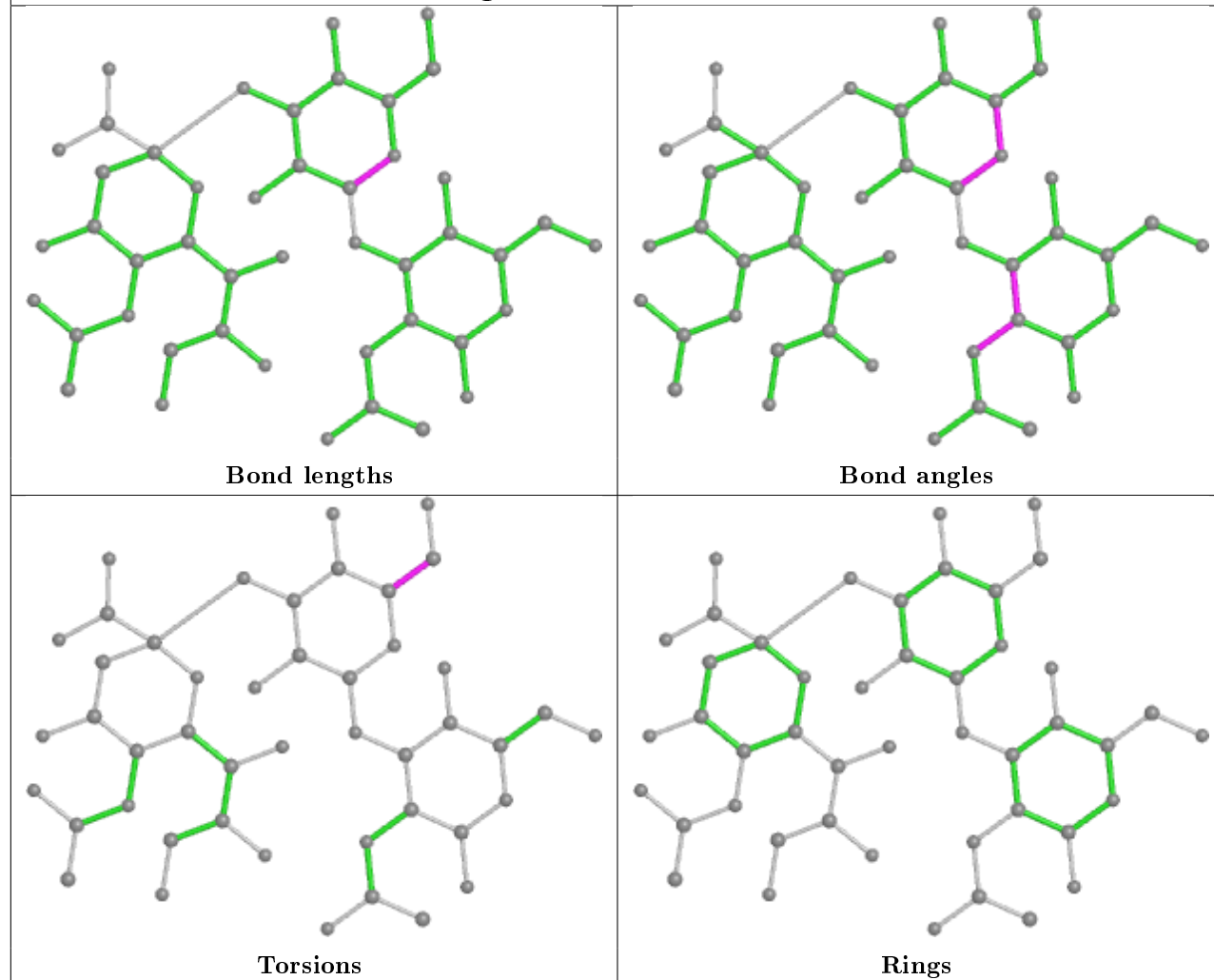
There are no ring outliers.

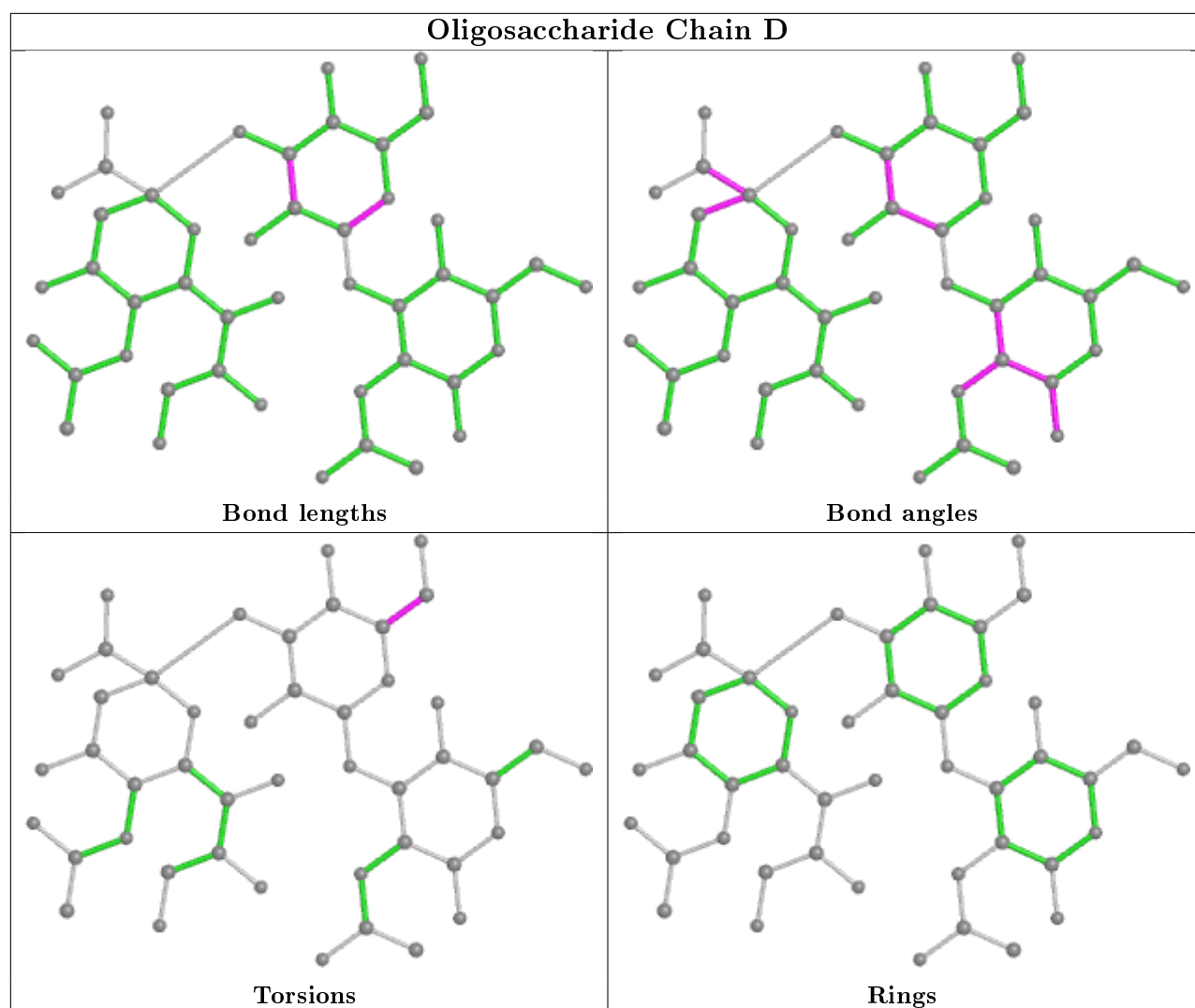
2 monomers are involved in 2 short contacts:

Mol	Chain	Res	Type	Clashes	Symm-Clashes
2	C	3	SIA	1	0
2	D	3	SIA	1	0

The following is a two-dimensional graphical depiction of Mogul quality analysis of bond lengths, bond angles, torsion angles, and ring geometry for oligosaccharide.

Oligosaccharide Chain C





5.6 Ligand geometry [i](#)

Of 2 ligands modelled in this entry, 2 are monoatomic - leaving 0 for Mogul analysis.

There are no bond length outliers.

There are no bond angle outliers.

There are no chirality outliers.

There are no torsion outliers.

There are no ring outliers.

No monomer is involved in short contacts.

5.7 Other polymers [i](#)

There are no such residues in this entry.

5.8 Polymer linkage issues ⓘ

There are no chain breaks in this entry.

6 Fit of model and data [i](#)

6.1 Protein, DNA and RNA chains [i](#)

In the following table, the column labelled ‘#RSRZ> 2’ contains the number (and percentage) of RSRZ outliers, followed by percent RSRZ outliers for the chain as percentile scores relative to all X-ray entries and entries of similar resolution. The OWAB column contains the minimum, median, 95th percentile and maximum values of the occupancy-weighted average B-factor per residue. The column labelled ‘Q< 0.9’ lists the number of (and percentage) of residues with an average occupancy less than 0.9.

Mol	Chain	Analysed	<RSRZ>	#RSRZ>2	OWAB(Å ²)	Q<0.9
1	A	123/127 (96%)	-0.60	2 (1%) 72 61	8, 12, 19, 41	0
1	B	123/127 (96%)	-0.67	1 (0%) 86 79	8, 12, 18, 41	0
All	All	246/254 (96%)	-0.63	3 (1%) 79 70	8, 12, 19, 41	0

All (3) RSRZ outliers are listed below:

Mol	Chain	Res	Type	RSRZ
1	A	399	ASP	2.4
1	B	399	ASP	2.1
1	A	400[A]	THR	2.0

6.2 Non-standard residues in protein, DNA, RNA chains [i](#)

There are no non-standard protein/DNA/RNA residues in this entry.

6.3 Carbohydrates [i](#)

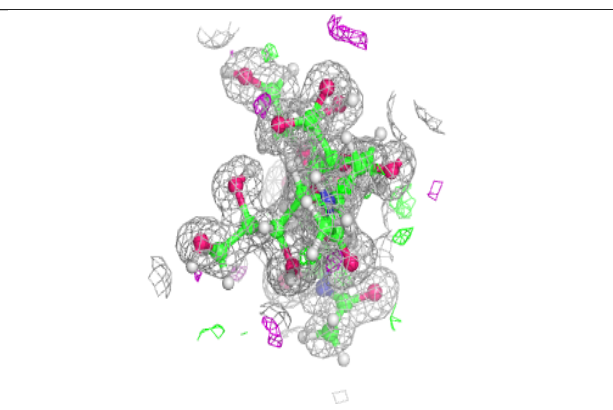
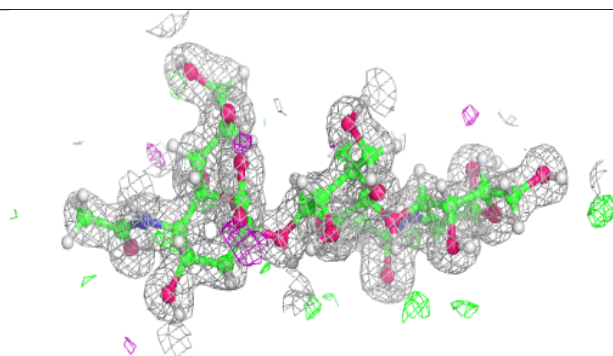
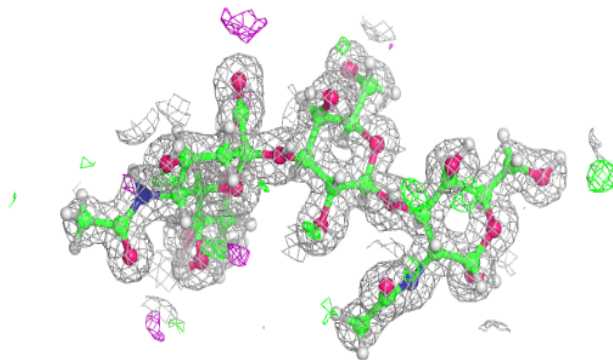
In the following table, the Atoms column lists the number of modelled atoms in the group and the number defined in the chemical component dictionary. The B-factors column lists the minimum, median, 95th percentile and maximum values of B factors of atoms in the group. The column labelled ‘Q< 0.9’ lists the number of atoms with occupancy less than 0.9.

Mol	Type	Chain	Res	Atoms	RSCC	RSR	B-factors(Å ²)	Q<0.9
2	SIA	C	3	20/21	0.96	0.06	10,13,18,19	0
2	GAL	D	2	11/12	0.96	0.05	11,13,17,21	0
2	SIA	D	3	20/21	0.96	0.06	11,15,19,24	0
2	A2G	D	1	15/15	0.96	0.06	11,14,21,26	0
2	A2G	C	1	15/15	0.97	0.05	9,13,17,20	0
2	GAL	C	2	11/12	0.97	0.05	10,12,14,16	0

The following is a graphical depiction of the model fit to experimental electron density for oligosaccharide. Each fit is shown from different orientation to approximate a three-dimensional view.

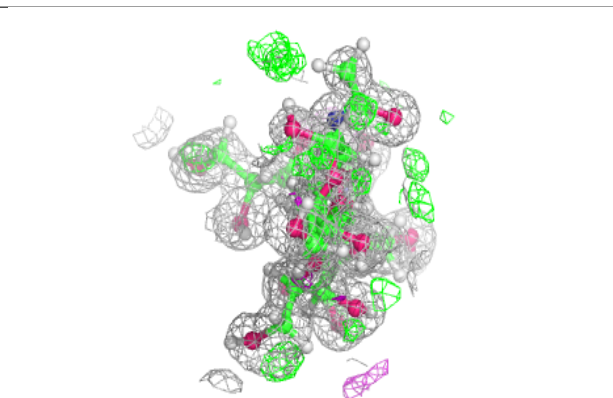
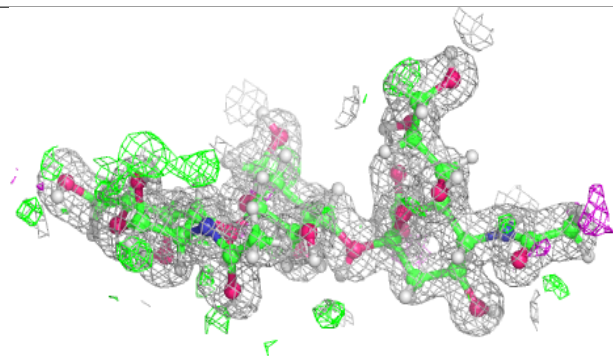
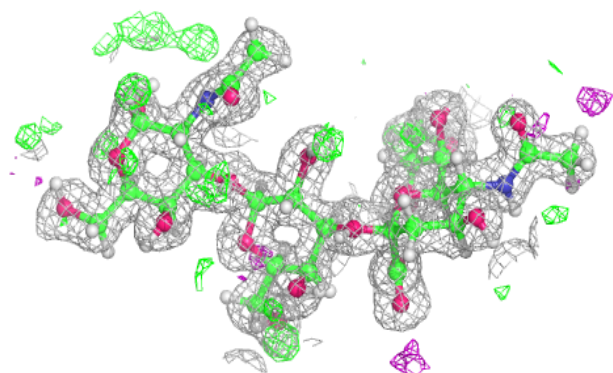
Electron density around Chain C:

$2mF_o-DF_c$ (at 0.7 rmsd) in gray
 mF_o-DF_c (at 3 rmsd) in purple (negative)
and green (positive)



Electron density around Chain D:

$2mF_o-DF_c$ (at 0.7 rmsd) in gray
 mF_o-DF_c (at 3 rmsd) in purple (negative)
and green (positive)



6.4 Ligands [i](#)

In the following table, the Atoms column lists the number of modelled atoms in the group and the number defined in the chemical component dictionary. The B-factors column lists the minimum, median, 95th percentile and maximum values of B factors of atoms in the group. The column labelled 'Q< 0.9' lists the number of atoms with occupancy less than 0.9.

Mol	Type	Chain	Res	Atoms	RSCC	RSR	B-factors(Å ²)	Q<0.9
3	MG	A	601	1/1	0.95	0.06	14,14,14,14	0
3	MG	B	601	1/1	0.98	0.06	13,13,13,13	0

6.5 Other polymers [i](#)

There are no such residues in this entry.