



# Full wwPDB X-ray Structure Validation Report ⓘ

Aug 10, 2020 – 02:53 AM BST

PDB ID : 1IW9  
Title : Crystal Structure of the M Intermediate of Bacteriorhodopsin  
Authors : Takeda, K.; Matsui, Y.; Kamiya, N.; Adachi, S.; Okumura, H.; Kouyama, T.;  
RIKEN Structural Genomics/Proteomics Initiative (RSGI)  
Deposited on : 2002-04-25  
Resolution : 2.50 Å(reported)

This is a Full wwPDB X-ray Structure Validation Report for a publicly released PDB entry.

We welcome your comments at [validation@mail.wwpdb.org](mailto:validation@mail.wwpdb.org)

A user guide is available at

<https://www.wwpdb.org/validation/2017/XrayValidationReportHelp>

with specific help available everywhere you see the ⓘ symbol.

---

The following versions of software and data (see [references ⓘ](#)) were used in the production of this report:

MolProbity : 4.02b-467  
Mogul : 1.8.5 (274361), CSD as541be (2020)  
Xtriage (Phenix) : **NOT EXECUTED**  
EDS : **NOT EXECUTED**  
buster-report : 1.1.7 (2018)  
Percentile statistics : 20191225.v01 (using entries in the PDB archive December 25th 2019)  
Ideal geometry (proteins) : Engh & Huber (2001)  
Ideal geometry (DNA, RNA) : Parkinson et al. (1996)  
Validation Pipeline (wwPDB-VP) : 2.13.1

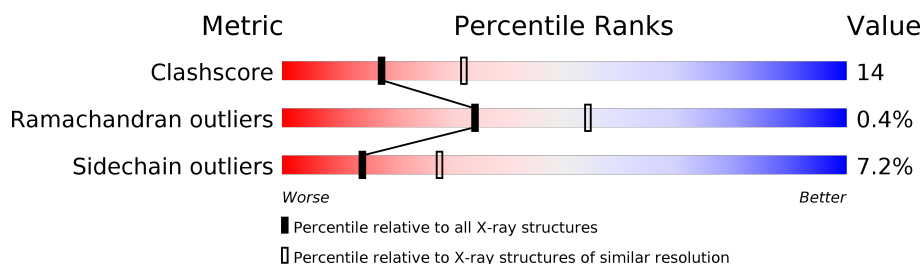
# 1 Overall quality at a glance

The following experimental techniques were used to determine the structure:

## *X-RAY DIFFRACTION*

The reported resolution of this entry is 2.50 Å.

Percentile scores (ranging between 0-100) for global validation metrics of the entry are shown in the following graphic. The table shows the number of entries on which the scores are based.



Metric	Whole archive (#Entries)	Similar resolution (#Entries, resolution range(Å))
Clashscore	141614	5346 (2.50-2.50)
Ramachandran outliers	138981	5231 (2.50-2.50)
Sidechain outliers	138945	5233 (2.50-2.50)

The table below summarises the geometric issues observed across the polymeric chains and their fit to the electron density. The red, orange, yellow and green segments on the lower bar indicate the fraction of residues that contain outliers for  $\geq 3$ , 2, 1 and 0 types of geometric quality criteria respectively. A grey segment represents the fraction of residues that are not modelled. The numeric value for each fraction is indicated below the corresponding segment, with a dot representing fractions  $\leq 5\%$ .

Note EDS was not executed.

Mol	Chain	Length	Quality of chain
1	A	248	
2	B	3	

The following table lists non-polymeric compounds, carbohydrate monomers and non-standard residues in protein, DNA, RNA chains that are outliers for geometric or electron-density-fit criteria:

Mol	Type	Chain	Res	Chirality	Geometry	Clashes	Electron density
2	GLC	B	1	X	-	-	-

## 2 Entry composition [i](#)

There are 6 unique types of molecules in this entry. The entry contains 2073 atoms, of which 0 are hydrogens and 0 are deuteriums.

In the tables below, the ZeroOcc column contains the number of atoms modelled with zero occupancy, the AltConf column contains the number of residues with at least one atom in alternate conformation and the Trace column contains the number of residues modelled with at most 2 atoms.

- Molecule 1 is a protein called bacteriorhodopsin.

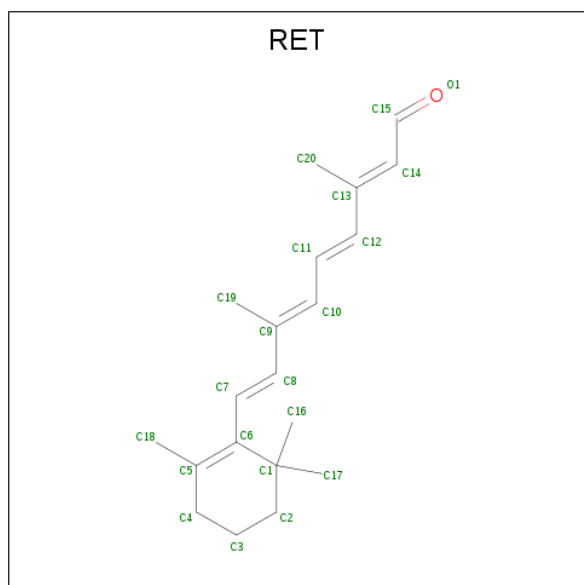
Mol	Chain	Residues	Atoms					ZeroOcc	AltConf	Trace
1	A	227	Total	C	N	O	S	0	0	0
			1750	1177	265	299	9			

- Molecule 2 is an oligosaccharide called beta-D-galactopyranose-(1-6)-alpha-D-mannopyranose-(1-2)-alpha-D-glucopyranose.



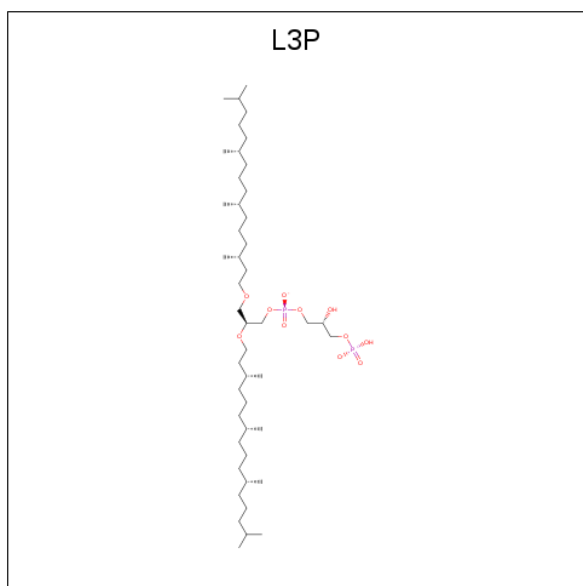
Mol	Chain	Residues	Atoms			ZeroOcc	AltConf	Trace
2	B	3	Total	C	O	0	0	0
			33	18	15			

- Molecule 3 is RETINAL (three-letter code: RET) (formula: C<sub>20</sub>H<sub>28</sub>O).



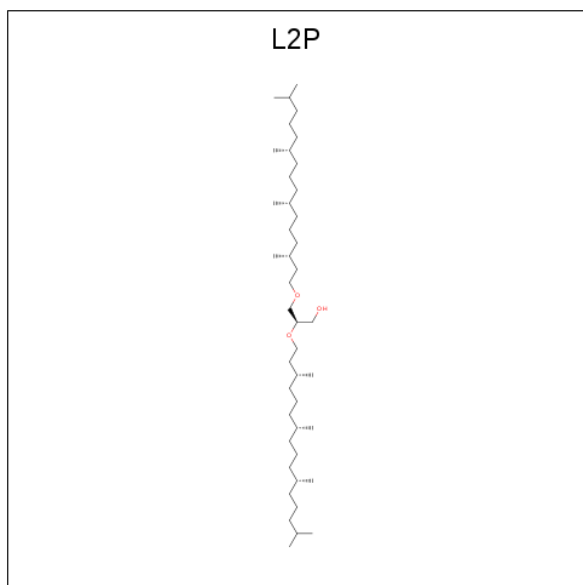
Mol	Chain	Residues	Atoms	ZeroOcc	AltConf
3	A	1	Total C 20 20	0	0

- Molecule 4 is 2,3-DI-O-PHYTANLY-3-SN-GLYCERO-1-PHOSPHORYL-3'-SN-GLYCEROL-1'-PHOSPHATE (three-letter code: L3P) (formula:  $C_{46}H_{94}O_{11}P_2$ ).



Mol	Chain	Residues	Atoms	ZeroOcc	AltConf
4	A	1	Total C O P 59 46 11 2	0	0
4	A	1	Total C O P 40 33 6 1	0	0
4	A	1	Total C O P 50 43 6 1	0	0
4	A	1	Total C O P 50 43 6 1	0	0

- Molecule 5 is 2,3-DI-PHYTANYL-GLYCEROL (three-letter code: L2P) (formula:  $C_{43}H_{88}O_3$ ).



Mol	Chain	Residues	Atoms			ZeroOcc	AltConf
5	A	1	Total	C	O	0	0
			46	43	3		

- Molecule 6 is water.

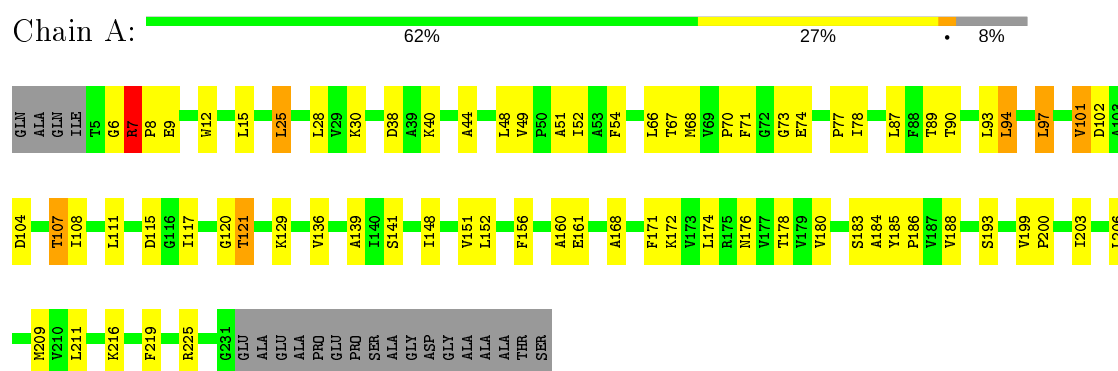
Mol	Chain	Residues	Atoms		ZeroOcc	AltConf
6	A	25	Total	O	1	0
			25	25		

### 3 Residue-property plots [i](#)

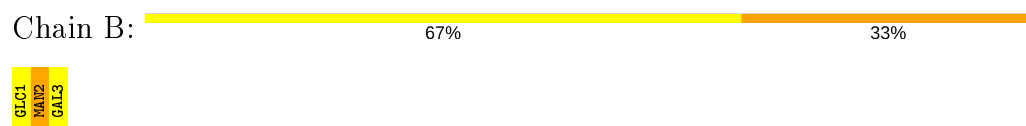
These plots are drawn for all protein, RNA, DNA and oligosaccharide chains in the entry. The first graphic for a chain summarises the proportions of the various outlier classes displayed in the second graphic. The second graphic shows the sequence view annotated by issues in geometry. Residues are color-coded according to the number of geometric quality criteria for which they contain at least one outlier: green = 0, yellow = 1, orange = 2 and red = 3 or more. Stretches of 2 or more consecutive residues without any outlier are shown as a green connector. Residues present in the sample, but not in the model, are shown in grey.

Note EDS was not executed.

- Molecule 1: bacteriorhodopsin



- Molecule 2: beta-D-galactopyranose-(1-6)-alpha-D-mannopyranose-(1-2)-alpha-D-glucopyranose



## 4 Data and refinement statistics

Xtriage (Phenix) and EDS were not executed - this section is therefore incomplete.

Property	Value	Source
Space group	P 6 2 2	Depositor
Cell constants a, b, c, $\alpha$ , $\beta$ , $\gamma$	102.30 Å   102.30 Å   112.30 Å 90.00°   90.00°   120.00°	Depositor
Resolution (Å)	15.30 – 2.50	Depositor
% Data completeness (in resolution range)	84.0 (15.30-2.50)	Depositor
$R_{merge}$	0.07	Depositor
$R_{sym}$	(Not available)	Depositor
Refinement program	CNS	Depositor
R, $R_{free}$	0.224 , 0.271	Depositor
Estimated twinning fraction	No twinning to report.	Xtriage
Total number of atoms	2073	wwPDB-VP
Average B, all atoms (Å <sup>2</sup> )	46.0	wwPDB-VP

## 5 Model quality

### 5.1 Standard geometry

Bond lengths and bond angles in the following residue types are not validated in this section: GLC, RET, L2P, GAL, L3P, MAN

The Z score for a bond length (or angle) is the number of standard deviations the observed value is removed from the expected value. A bond length (or angle) with  $|Z| > 5$  is considered an outlier worth inspection. RMSZ is the root-mean-square of all Z scores of the bond lengths (or angles).

Mol	Chain	Bond lengths		Bond angles	
		RMSZ	$\# Z  > 5$	RMSZ	$\# Z  > 5$
1	A	0.39	0/1798	0.59	0/2457

There are no bond length outliers.

There are no bond angle outliers.

There are no chirality outliers.

There are no planarity outliers.

### 5.2 Too-close contacts

In the following table, the Non-H and H(model) columns list the number of non-hydrogen atoms and hydrogen atoms in the chain respectively. The H(added) column lists the number of hydrogen atoms added and optimized by MolProbity. The Clashes column lists the number of clashes within the asymmetric unit, whereas Symm-Clashes lists symmetry related clashes.

Mol	Chain	Non-H	H(model)	H(added)	Clashes	Symm-Clashes
1	A	1750	0	1802	57	0
2	B	33	0	28	2	0
3	A	20	0	27	4	0
4	A	199	0	331	4	0
5	A	46	0	86	2	0
6	A	25	0	0	2	0
All	All	2073	0	2274	59	0

The all-atom clashscore is defined as the number of clashes found per 1000 atoms (including hydrogen atoms). The all-atom clashscore for this structure is 14.

All (59) close contacts within the same asymmetric unit are listed below, sorted by their clash magnitude.



Atom-1	Atom-2	Interatomic distance (Å)	Clash overlap (Å)
1:A:89:THR:HG21	1:A:216:LYS:NZ	1.79	0.97
1:A:121:THR:HG22	1:A:141:SER:HB2	1.51	0.93
1:A:117:ILE:O	1:A:121:THR:HB	1.82	0.79
1:A:199:VAL:HG12	1:A:203:ILE:HB	1.67	0.76
1:A:40:LYS:HB2	6:A:624:HOH:O	1.87	0.75
1:A:200:PRO:HG2	1:A:203:ILE:HG12	1.69	0.75
1:A:25:LEU:HD13	4:A:260:L3P:H302	1.73	0.71
1:A:6:GLY:HA2	1:A:9:GLU:OE1	1.94	0.67
1:A:111:LEU:HD21	1:A:151:VAL:HG11	1.76	0.67
1:A:104:ASP:HB2	1:A:107:THR:HG22	1.76	0.67
1:A:101:VAL:HG23	1:A:160:ALA:HB2	1.76	0.67
1:A:70:PRO:HA	1:A:74:GLU:O	1.96	0.66
1:A:44:ALA:HA	4:A:260:L3P:H111	1.77	0.65
1:A:184:ALA:O	1:A:188:VAL:HG23	1.98	0.63
1:A:186:PRO:HB3	3:A:250:RET:H183	1.79	0.63
1:A:49:VAL:HG13	1:A:89:THR:HG23	1.81	0.62
1:A:104:ASP:O	1:A:108:ILE:HG13	2.00	0.62
1:A:168:ALA:O	1:A:172:LYS:HG2	2.01	0.60
1:A:48:LEU:O	1:A:52:ILE:HG13	2.02	0.60
1:A:71:PHE:C	1:A:73:GLY:H	2.06	0.58
1:A:174:LEU:O	1:A:178:THR:HG23	2.04	0.57
1:A:121:THR:CG2	1:A:141:SER:HB2	2.31	0.56
1:A:7:ARG:H	1:A:8:PRO:HD2	1.70	0.55
1:A:40:LYS:HZ3	4:A:260:L3P:H62	1.72	0.54
1:A:28:LEU:HD13	4:A:260:L3P:H522	1.90	0.54
3:A:250:RET:H161	3:A:250:RET:H8	1.89	0.53
1:A:6:GLY:HA3	1:A:66:LEU:HD11	1.91	0.53
1:A:107:THR:O	1:A:111:LEU:HD23	2.10	0.52
1:A:30:LYS:HE2	1:A:225:ARG:HG2	1.92	0.51
1:A:136:VAL:O	1:A:139:ALA:HB3	2.12	0.50
1:A:67:THR:HG22	1:A:78:ILE:O	2.12	0.49
1:A:141:SER:OG	3:A:250:RET:H41	2.13	0.49
1:A:90:THR:HB	1:A:115:ASP:OD2	2.13	0.49
1:A:152:LEU:O	1:A:156:PHE:HB2	2.14	0.48
1:A:193:SER:HB3	6:A:609:HOH:O	2.14	0.48
1:A:120:GLY:HA3	5:A:270:L2P:H491	1.96	0.47
1:A:104:ASP:O	1:A:107:THR:HG23	2.12	0.47
1:A:87:LEU:HD21	5:A:270:L2P:H251	1.95	0.47
1:A:111:LEU:HD12	1:A:148:ILE:HG23	1.96	0.47
1:A:66:LEU:HD23	1:A:67:THR:N	2.29	0.47
1:A:51:ALA:O	1:A:54:PHE:HB3	2.16	0.46
1:A:129:LYS:HZ1	2:B:2:MAN:H61	1.81	0.46

Continued on next page...

*Continued from previous page...*

Atom-1	Atom-2	Interatomic distance (Å)	Clash overlap (Å)
1:A:156:PHE:HB3	1:A:171:PHE:CZ	2.51	0.46
1:A:7:ARG:HB3	1:A:8:PRO:CD	2.45	0.45
1:A:129:LYS:NZ	2:B:2:MAN:H61	2.31	0.45
1:A:185:TYR:N	1:A:186:PRO:HD2	2.32	0.45
1:A:25:LEU:HA	1:A:25:LEU:HD12	1.81	0.45
1:A:15:LEU:HD23	1:A:209:MET:CE	2.48	0.44
1:A:97:LEU:HD13	1:A:219:PHE:HZ	1.83	0.43
1:A:176:ASN:O	1:A:180:VAL:HG23	2.18	0.43
3:A:250:RET:H7	3:A:250:RET:H181	1.78	0.43
1:A:199:VAL:CG1	1:A:203:ILE:HB	2.43	0.42
1:A:12:TRP:CE3	1:A:206:LEU:HD23	2.54	0.42
1:A:7:ARG:HB3	1:A:8:PRO:HD3	2.01	0.42
1:A:111:LEU:HD21	1:A:151:VAL:CG1	2.48	0.42
1:A:71:PHE:C	1:A:73:GLY:N	2.72	0.41
1:A:104:ASP:HB2	1:A:107:THR:CG2	2.49	0.41
1:A:68:MET:CE	1:A:77:PRO:HB3	2.51	0.41
1:A:94:LEU:HD11	1:A:152:LEU:HD11	2.03	0.40

There are no symmetry-related clashes.

## 5.3 Torsion angles ⓘ

### 5.3.1 Protein backbone ⓘ

In the following table, the Percentiles column shows the percent Ramachandran outliers of the chain as a percentile score with respect to all X-ray entries followed by that with respect to entries of similar resolution.

The Analysed column shows the number of residues for which the backbone conformation was analysed, and the total number of residues.

Mol	Chain	Analysed	Favoured	Allowed	Outliers	Percentiles
1	A	225/248 (91%)	217 (96%)	7 (3%)	1 (0%)	34 54

All (1) Ramachandran outliers are listed below:

Mol	Chain	Res	Type
1	A	7	ARG

### 5.3.2 Protein sidechains [i](#)

In the following table, the Percentiles column shows the percent sidechain outliers of the chain as a percentile score with respect to all X-ray entries followed by that with respect to entries of similar resolution.

The Analysed column shows the number of residues for which the sidechain conformation was analysed, and the total number of residues.

Mol	Chain	Analysed	Rotameric	Outliers	Percentiles	
1	A	181/194 (93%)	168 (93%)	13 (7%)	14	28

All (13) residues with a non-rotameric sidechain are listed below:

Mol	Chain	Res	Type
1	A	7	ARG
1	A	25	LEU
1	A	38	ASP
1	A	93	LEU
1	A	94	LEU
1	A	97	LEU
1	A	101	VAL
1	A	102	ASP
1	A	107	THR
1	A	121	THR
1	A	161	GLU
1	A	183	SER
1	A	211	LEU

Some sidechains can be flipped to improve hydrogen bonding and reduce clashes. All (1) such sidechains are listed below:

Mol	Chain	Res	Type
1	A	105	GLN

### 5.3.3 RNA [i](#)

There are no RNA molecules in this entry.

## 5.4 Non-standard residues in protein, DNA, RNA chains [i](#)

There are no non-standard protein/DNA/RNA residues in this entry.

## 5.5 Carbohydrates ⓘ

3 monosaccharides are modelled in this entry.

In the following table, the Counts columns list the number of bonds (or angles) for which Mogul statistics could be retrieved, the number of bonds (or angles) that are observed in the model and the number of bonds (or angles) that are defined in the Chemical Component Dictionary. The Link column lists molecule types, if any, to which the group is linked. The Z score for a bond length (or angle) is the number of standard deviations the observed value is removed from the expected value. A bond length (or angle) with  $|Z| > 2$  is considered an outlier worth inspection. RMSZ is the root-mean-square of all Z scores of the bond lengths (or angles).

Mol	Type	Chain	Res	Link	Bond lengths			Bond angles		
					Counts	RMSZ	# Z  > 2	Counts	RMSZ	# Z  > 2
2	GLC	B	1	2,5	11,11,12	2.40	4 (36%)	15,15,17	1.27	2 (13%)
2	MAN	B	2	2	11,11,12	2.13	6 (54%)	15,15,17	1.82	4 (26%)
2	GAL	B	3	2	11,11,12	2.71	6 (54%)	15,15,17	1.48	3 (20%)

In the following table, the Chirals column lists the number of chiral outliers, the number of chiral centers analysed, the number of these observed in the model and the number defined in the Chemical Component Dictionary. Similar counts are reported in the Torsion and Rings columns. '-' means no outliers of that kind were identified.

Mol	Type	Chain	Res	Link	Chirals	Torsions	Rings
2	GLC	B	1	2,5	1/1/4/5	0/2/19/22	0/1/1/1
2	MAN	B	2	2	-	2/2/19/22	0/1/1/1
2	GAL	B	3	2	-	1/2/19/22	0/1/1/1

All (16) bond length outliers are listed below:

Mol	Chain	Res	Type	Atoms	Z	Observed(Å)	Ideal(Å)
2	B	3	GAL	O5-C5	4.97	1.53	1.43
2	B	1	GLC	O5-C5	4.46	1.52	1.43
2	B	1	GLC	O5-C1	3.90	1.49	1.43
2	B	2	MAN	C2-C3	3.81	1.58	1.52
2	B	3	GAL	O5-C1	3.75	1.49	1.43
2	B	3	GAL	C4-C5	3.65	1.60	1.53
2	B	2	MAN	O2-C2	3.54	1.50	1.43
2	B	1	GLC	C1-C2	3.49	1.60	1.52
2	B	3	GAL	C4-C3	3.37	1.60	1.52
2	B	1	GLC	C2-C3	2.98	1.56	1.52
2	B	3	GAL	C1-C2	2.81	1.58	1.52
2	B	2	MAN	C1-C2	2.47	1.57	1.52
2	B	3	GAL	C2-C3	2.30	1.55	1.52

*Continued on next page...*

*Continued from previous page...*

Mol	Chain	Res	Type	Atoms	Z	Observed(Å)	Ideal(Å)
2	B	2	MAN	C4-C5	2.22	1.57	1.53
2	B	2	MAN	O5-C1	2.10	1.47	1.43
2	B	2	MAN	O5-C5	2.08	1.47	1.43

All (9) bond angle outliers are listed below:

Mol	Chain	Res	Type	Atoms	Z	Observed(°)	Ideal(°)
2	B	2	MAN	O6-C6-C5	4.61	127.09	111.29
2	B	2	MAN	C1-O5-C5	3.52	116.95	112.19
2	B	3	GAL	O5-C5-C6	3.46	112.62	107.20
2	B	1	GLC	O5-C5-C6	-2.52	103.26	107.20
2	B	2	MAN	O5-C1-C2	-2.43	107.03	110.77
2	B	1	GLC	O6-C6-C5	2.37	119.41	111.29
2	B	2	MAN	C2-C3-C4	-2.32	106.87	110.89
2	B	3	GAL	C3-C4-C5	-2.18	106.34	110.24
2	B	3	GAL	C6-C5-C4	-2.13	108.03	113.00

All (1) chirality outliers are listed below:

Mol	Chain	Res	Type	Atom
2	B	1	GLC	C1

All (3) torsion outliers are listed below:

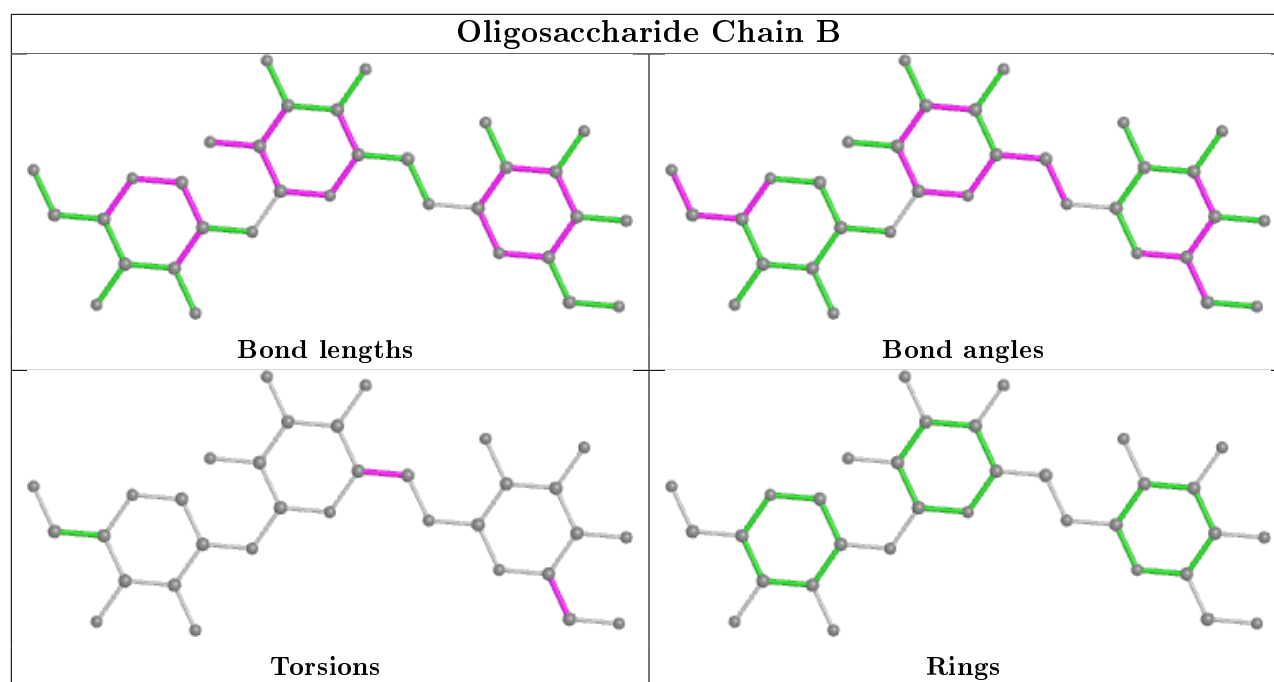
Mol	Chain	Res	Type	Atoms
2	B	2	MAN	O5-C5-C6-O6
2	B	2	MAN	C4-C5-C6-O6
2	B	3	GAL	O5-C5-C6-O6

There are no ring outliers.

1 monomer is involved in 2 short contacts:

Mol	Chain	Res	Type	Clashes	Symm-Clashes
2	B	2	MAN	2	0

The following is a two-dimensional graphical depiction of Mogul quality analysis of bond lengths, bond angles, torsion angles, and ring geometry for oligosaccharide.



## 5.6 Ligand geometry [i](#)

6 ligands are modelled in this entry.

In the following table, the Counts columns list the number of bonds (or angles) for which Mogul statistics could be retrieved, the number of bonds (or angles) that are observed in the model and the number of bonds (or angles) that are defined in the Chemical Component Dictionary. The Link column lists molecule types, if any, to which the group is linked. The Z score for a bond length (or angle) is the number of standard deviations the observed value is removed from the expected value. A bond length (or angle) with  $|Z| > 2$  is considered an outlier worth inspection. RMSZ is the root-mean-square of all Z scores of the bond lengths (or angles).

Mol	Type	Chain	Res	Link	Bond lengths			Bond angles		
					Counts	RMSZ	$\# Z  > 2$	Counts	RMSZ	$\# Z  > 2$
4	L3P	A	260	-	58,58,58	1.03	5 (8%)	67,73,73	1.42	8 (11%)
4	L3P	A	290	-	49,49,58	1.75	15 (30%)	57,60,73	1.29	5 (8%)
3	RET	A	250	1	20,20,21	1.85	4 (20%)	27,27,28	2.18	10 (37%)
5	L2P	A	270	2	45,45,45	1.36	5 (11%)	51,53,53	2.08	14 (27%)
4	L3P	A	300	-	49,49,58	1.60	12 (24%)	57,60,73	1.36	5 (8%)
4	L3P	A	280	-	39,39,58	1.96	13 (33%)	45,48,73	1.13	2 (4%)

In the following table, the Chirals column lists the number of chiral outliers, the number of chiral centers analysed, the number of these observed in the model and the number defined in the Chemical Component Dictionary. Similar counts are reported in the Torsion and Rings columns. '-' means no outliers of that kind were identified.

Mol	Type	Chain	Res	Link	Chirals	Torsions	Rings
4	L3P	A	260	-	-	45/67/67/67	-
4	L3P	A	290	-	-	33/55/55/67	-
3	RET	A	250	1	-	2/13/30/31	0/1/1/1
5	L2P	A	270	2	-	31/51/51/51	-
4	L3P	A	300	-	-	32/55/55/67	-
4	L3P	A	280	-	-	26/43/43/67	-

All (54) bond length outliers are listed below:

Mol	Chain	Res	Type	Atoms	Z	Observed(Å)	Ideal(Å)
3	A	250	RET	C1-C6	5.01	1.60	1.53
4	A	280	L3P	O2-C2	4.98	1.57	1.43
4	A	290	L3P	P1-O3	4.52	1.74	1.60
4	A	280	L3P	P1-O2P	4.06	1.70	1.54
4	A	280	L3P	C3-C2	3.98	1.62	1.50
4	A	300	L3P	P1-O3	3.91	1.72	1.60
4	A	280	L3P	C1-C2	3.62	1.61	1.50
5	A	270	L2P	C26-C25	3.50	1.67	1.52
3	A	250	RET	C2-C3	-3.46	1.44	1.52
3	A	250	RET	C5-C6	3.14	1.39	1.34
4	A	290	L3P	C3-C2	3.01	1.59	1.50
4	A	260	L3P	O2-C41	2.99	1.51	1.43
4	A	300	L3P	P1-O2P	2.99	1.66	1.54
3	A	250	RET	C7-C6	2.97	1.55	1.45
4	A	290	L3P	P1-O2P	2.96	1.66	1.54
4	A	290	L3P	C12-C11	2.86	1.60	1.50
4	A	280	L3P	P1-O3	2.83	1.69	1.60
4	A	300	L3P	C12-C11	2.77	1.60	1.50
4	A	280	L3P	O2-C41	2.74	1.50	1.43
4	A	280	L3P	O1-C1	2.67	1.49	1.42
4	A	300	L3P	C26-C27	2.63	1.63	1.52
4	A	290	L3P	C17-C18	2.61	1.66	1.52
4	A	290	L3P	C15-C13	2.59	1.66	1.52
4	A	260	L3P	O2-C2	2.57	1.50	1.43
5	A	270	L2P	C25-C23	2.57	1.66	1.52
4	A	280	L3P	C56-C55	2.56	1.63	1.52
4	A	300	L3P	C3-C2	2.52	1.58	1.50
5	A	270	L2P	O2-C41	2.48	1.49	1.43
4	A	300	L3P	C55-C53	2.46	1.65	1.52
4	A	290	L3P	C25-C23	2.44	1.65	1.52
4	A	290	L3P	C19-C18	2.42	1.60	1.52
4	A	290	L3P	C26-C27	2.42	1.62	1.52

*Continued on next page...*

*Continued from previous page...*

Mol	Chain	Res	Type	Atoms	Z	Observed(Å)	Ideal(Å)
4	A	290	L3P	O1-C11	2.40	1.52	1.42
4	A	290	L3P	C55-C53	2.40	1.65	1.52
4	A	260	L3P	P1-O3	2.38	1.68	1.59
4	A	280	L3P	C42-C41	2.37	1.59	1.50
5	A	270	L2P	C47-C48	2.36	1.64	1.52
4	A	300	L3P	O1-C11	2.35	1.52	1.42
5	A	270	L2P	C42-C41	2.34	1.58	1.50
4	A	300	L3P	C15-C13	2.33	1.64	1.52
4	A	280	L3P	C56-C57	2.33	1.62	1.52
4	A	300	L3P	C17-C18	2.32	1.64	1.52
4	A	290	L3P	C26-C25	2.28	1.61	1.52
4	A	300	L3P	C26-C25	2.20	1.61	1.52
4	A	300	L3P	C14-C13	2.19	1.59	1.52
4	A	260	L3P	P2-O6	2.19	1.67	1.60
4	A	290	L3P	C56-C55	2.17	1.61	1.52
4	A	260	L3P	C42-C41	2.13	1.58	1.50
4	A	300	L3P	C56-C55	2.12	1.61	1.52
4	A	280	L3P	C12-C11	2.11	1.58	1.50
4	A	280	L3P	C52-C53	2.09	1.63	1.52
4	A	290	L3P	C14-C13	2.07	1.59	1.52
4	A	290	L3P	C54-C53	2.06	1.59	1.52
4	A	280	L3P	C51-C50	-2.01	1.43	1.52

All (44) bond angle outliers are listed below:

Mol	Chain	Res	Type	Atoms	Z	Observed(°)	Ideal(°)
5	A	270	L2P	O1-C1-C2	8.00	128.25	109.44
5	A	270	L2P	C29-C28-C27	5.79	147.35	111.54
4	A	260	L3P	C41-O2-C2	5.60	128.26	115.40
4	A	300	L3P	C16-C17-C18	5.09	132.37	115.92
3	A	250	RET	C20-C13-C12	4.46	125.11	118.08
3	A	250	RET	C20-C13-C14	-4.11	111.56	123.71
4	A	290	L3P	C16-C17-C18	3.72	127.94	115.92
3	A	250	RET	C2-C1-C6	3.58	115.99	110.48
4	A	300	L3P	C41-O2-C2	-3.54	107.27	115.40
4	A	260	L3P	O2-C41-C42	3.53	116.19	108.77
3	A	250	RET	C18-C5-C6	-3.51	120.58	124.53
4	A	280	L3P	C51-C50-C48	3.48	127.18	115.92
4	A	260	L3P	C11-O1-C1	3.35	128.58	113.61
4	A	290	L3P	O2P-P1-O3	3.32	115.58	106.73
4	A	290	L3P	O1-C1-C2	3.31	117.23	109.44
5	A	270	L2P	C14-C13-C12	-3.26	99.47	111.29

*Continued on next page...*



*Continued from previous page...*

Mol	Chain	Res	Type	Atoms	Z	Observed(°)	Ideal(°)
5	A	270	L2P	O3-C3-C2	3.12	120.05	111.78
4	A	260	L3P	C26-C25-C23	-3.11	105.86	115.92
4	A	300	L3P	O1-C1-C2	3.00	116.50	109.44
4	A	300	L3P	O2P-P1-O3	2.97	114.65	106.73
5	A	270	L2P	C26-C27-C28	2.92	129.75	115.98
5	A	270	L2P	C54-C53-C52	-2.89	100.82	111.29
4	A	300	L3P	C47-C46-C45	-2.88	100.03	113.24
3	A	250	RET	C11-C10-C9	-2.86	123.22	127.31
5	A	270	L2P	C16-C15-C13	-2.83	106.76	115.92
3	A	250	RET	C1-C6-C5	-2.79	118.68	122.61
5	A	270	L2P	C51-C52-C53	2.76	124.85	115.92
5	A	270	L2P	C49-C48-C47	2.76	121.29	111.29
4	A	260	L3P	C46-C47-C48	-2.73	107.08	115.92
5	A	270	L2P	C30-C28-C29	-2.66	98.23	110.51
5	A	270	L2P	C16-C17-C18	-2.65	107.35	115.92
3	A	250	RET	C7-C8-C9	-2.62	122.28	126.23
5	A	270	L2P	C22-C21-C20	-2.61	101.23	113.24
4	A	290	L3P	O4-P1-O3	2.48	113.34	106.73
4	A	260	L3P	C46-C45-C43	-2.45	108.01	115.92
5	A	270	L2P	C19-C18-C20	-2.45	102.43	111.29
4	A	280	L3P	O2-C41-C42	2.42	113.85	108.77
5	A	270	L2P	C46-C47-C48	2.42	123.74	115.92
3	A	250	RET	C18-C5-C4	2.41	118.25	113.62
3	A	250	RET	C1-C6-C7	2.40	122.58	115.78
4	A	260	L3P	O1-C1-C2	2.39	115.05	109.44
4	A	290	L3P	C19-C18-C17	2.34	119.76	111.29
4	A	260	L3P	P2-O6-C6	2.20	124.36	118.30
3	A	250	RET	C11-C12-C13	-2.10	120.53	126.42

There are no chirality outliers.

All (169) torsion outliers are listed below:

Mol	Chain	Res	Type	Atoms
4	A	260	L3P	O1-C1-C2-O2
4	A	260	L3P	C41-C42-C43-C44
4	A	290	L3P	C42-C41-O2-C2
4	A	290	L3P	C16-C17-C18-C19
3	A	250	RET	C12-C13-C14-C15
3	A	250	RET	C20-C13-C14-C15
5	A	270	L2P	O2-C2-C3-O3
5	A	270	L2P	C11-C12-C13-C14
4	A	280	L3P	C3-O3-P1-O4

*Continued on next page...*

*Continued from previous page...*

Mol	Chain	Res	Type	Atoms
4	A	280	L3P	C3-O3-P1-O1P
4	A	280	L3P	C3-O3-P1-O2P
4	A	260	L3P	O4-C4-C5-C6
4	A	290	L3P	C23-C25-C26-C27
5	A	270	L2P	C46-C47-C48-C49
4	A	290	L3P	C55-C56-C57-C58
5	A	270	L2P	C43-C45-C46-C47
5	A	270	L2P	C50-C51-C52-C53
4	A	300	L3P	C43-C45-C46-C47
4	A	260	L3P	C23-C25-C26-C27
4	A	290	L3P	C20-C21-C22-C23
4	A	300	L3P	C48-C50-C51-C52
4	A	280	L3P	C45-C46-C47-C48
4	A	300	L3P	C55-C56-C57-C58
4	A	300	L3P	C50-C51-C52-C53
4	A	300	L3P	C20-C21-C22-C23
4	A	280	L3P	C55-C56-C57-C58
4	A	290	L3P	C45-C46-C47-C48
4	A	260	L3P	O4-C4-C5-O5
4	A	300	L3P	C15-C16-C17-C18
4	A	260	L3P	C18-C20-C21-C22
4	A	260	L3P	C20-C21-C22-C23
4	A	260	L3P	C25-C26-C27-C28
4	A	260	L3P	C48-C50-C51-C52
4	A	290	L3P	C48-C50-C51-C52
4	A	300	L3P	C26-C27-C28-C30
5	A	270	L2P	O1-C11-C12-C13
4	A	260	L3P	C56-C57-C58-C60
4	A	290	L3P	C26-C27-C28-C30
4	A	300	L3P	C56-C57-C58-C60
4	A	260	L3P	C26-C27-C28-C29
4	A	290	L3P	C56-C57-C58-C59
4	A	280	L3P	C56-C57-C58-C60
4	A	300	L3P	C16-C17-C18-C19
4	A	260	L3P	C45-C46-C47-C48
4	A	260	L3P	C42-C41-O2-C2
4	A	290	L3P	C43-C45-C46-C47
4	A	290	L3P	C56-C57-C58-C60
5	A	270	L2P	C56-C57-C58-C60
4	A	300	L3P	C56-C57-C58-C59
4	A	280	L3P	C13-C15-C16-C17
4	A	290	L3P	C18-C20-C21-C22

*Continued on next page...*

*Continued from previous page...*

Mol	Chain	Res	Type	Atoms
4	A	290	L3P	C26-C27-C28-C29
5	A	270	L2P	C56-C57-C58-C59
4	A	280	L3P	C56-C57-C58-C59
4	A	260	L3P	C26-C27-C28-C30
4	A	300	L3P	C26-C27-C28-C29
4	A	280	L3P	C43-C45-C46-C47
4	A	280	L3P	C48-C50-C51-C52
4	A	260	L3P	C53-C55-C56-C57
4	A	260	L3P	C55-C56-C57-C58
4	A	290	L3P	O2-C41-C42-C43
5	A	270	L2P	O2-C41-C42-C43
5	A	270	L2P	C48-C50-C51-C52
5	A	270	L2P	C17-C18-C20-C21
4	A	290	L3P	C13-C15-C16-C17
5	A	270	L2P	C18-C20-C21-C22
4	A	260	L3P	C56-C57-C58-C59
4	A	260	L3P	C21-C22-C23-C24
4	A	290	L3P	C19-C18-C20-C21
4	A	260	L3P	O1-C1-C2-C3
4	A	290	L3P	O1-C11-C12-C13
4	A	290	L3P	C15-C16-C17-C18
4	A	280	L3P	C16-C17-C18-C20
4	A	260	L3P	C21-C22-C23-C25
4	A	260	L3P	C42-C43-C45-C46
4	A	260	L3P	C51-C52-C53-C55
4	A	290	L3P	C42-C43-C45-C46
4	A	260	L3P	C44-C43-C45-C46
4	A	260	L3P	C49-C48-C50-C51
4	A	290	L3P	C49-C48-C50-C51
5	A	270	L2P	C14-C13-C15-C16
5	A	270	L2P	C16-C17-C18-C19
5	A	270	L2P	C24-C23-C25-C26
5	A	270	L2P	C42-C41-O2-C2
4	A	280	L3P	C42-C41-O2-C2
4	A	300	L3P	C1-C2-C3-O3
5	A	270	L2P	C20-C21-C22-C23
4	A	260	L3P	C2-C3-O3-P1
4	A	290	L3P	C2-C3-O3-P1
4	A	260	L3P	C41-C42-C43-C45
5	A	270	L2P	C11-C12-C13-C15
4	A	280	L3P	O1-C1-C2-C3
4	A	280	L3P	C16-C17-C18-C19

*Continued on next page...*

*Continued from previous page...*

Mol	Chain	Res	Type	Atoms
4	A	260	L3P	C50-C51-C52-C53
4	A	260	L3P	C24-C23-C25-C26
5	A	270	L2P	C51-C52-C53-C54
4	A	300	L3P	C51-C52-C53-C54
5	A	270	L2P	C15-C16-C17-C18
4	A	280	L3P	O1-C11-C12-C13
4	A	280	L3P	O2-C41-C42-C43
4	A	260	L3P	C1-C2-C3-O3
4	A	260	L3P	C12-C13-C15-C16
4	A	260	L3P	C17-C18-C20-C21
4	A	260	L3P	C22-C23-C25-C26
4	A	260	L3P	C46-C47-C48-C50
4	A	260	L3P	C47-C48-C50-C51
4	A	290	L3P	C16-C17-C18-C20
4	A	290	L3P	C47-C48-C50-C51
4	A	290	L3P	C51-C52-C53-C55
5	A	270	L2P	C12-C13-C15-C16
5	A	270	L2P	C16-C17-C18-C20
5	A	270	L2P	C51-C52-C53-C55
4	A	300	L3P	C17-C18-C20-C21
4	A	300	L3P	C51-C52-C53-C55
4	A	280	L3P	C52-C53-C55-C56
4	A	290	L3P	C2-C1-O1-C11
4	A	300	L3P	C2-C1-O1-C11
4	A	300	L3P	O2-C2-C3-O3
4	A	290	L3P	C51-C52-C53-C54
4	A	300	L3P	O1-C11-C12-C13
4	A	300	L3P	C42-C41-O2-C2
4	A	300	L3P	C2-C3-O3-P1
4	A	260	L3P	C3-O3-P1-O2P
4	A	260	L3P	C12-C11-O1-C1
4	A	260	L3P	O2-C2-C3-O3
4	A	260	L3P	C16-C17-C18-C20
4	A	290	L3P	C12-C13-C15-C16
4	A	290	L3P	C52-C53-C55-C56
4	A	300	L3P	C22-C23-C25-C26
4	A	300	L3P	C42-C43-C45-C46
4	A	280	L3P	O2-C2-C3-O3
4	A	280	L3P	C12-C13-C15-C16
4	A	280	L3P	C2-C1-O1-C11
4	A	260	L3P	C14-C13-C15-C16
4	A	260	L3P	C19-C18-C20-C21

*Continued on next page...*

*Continued from previous page...*

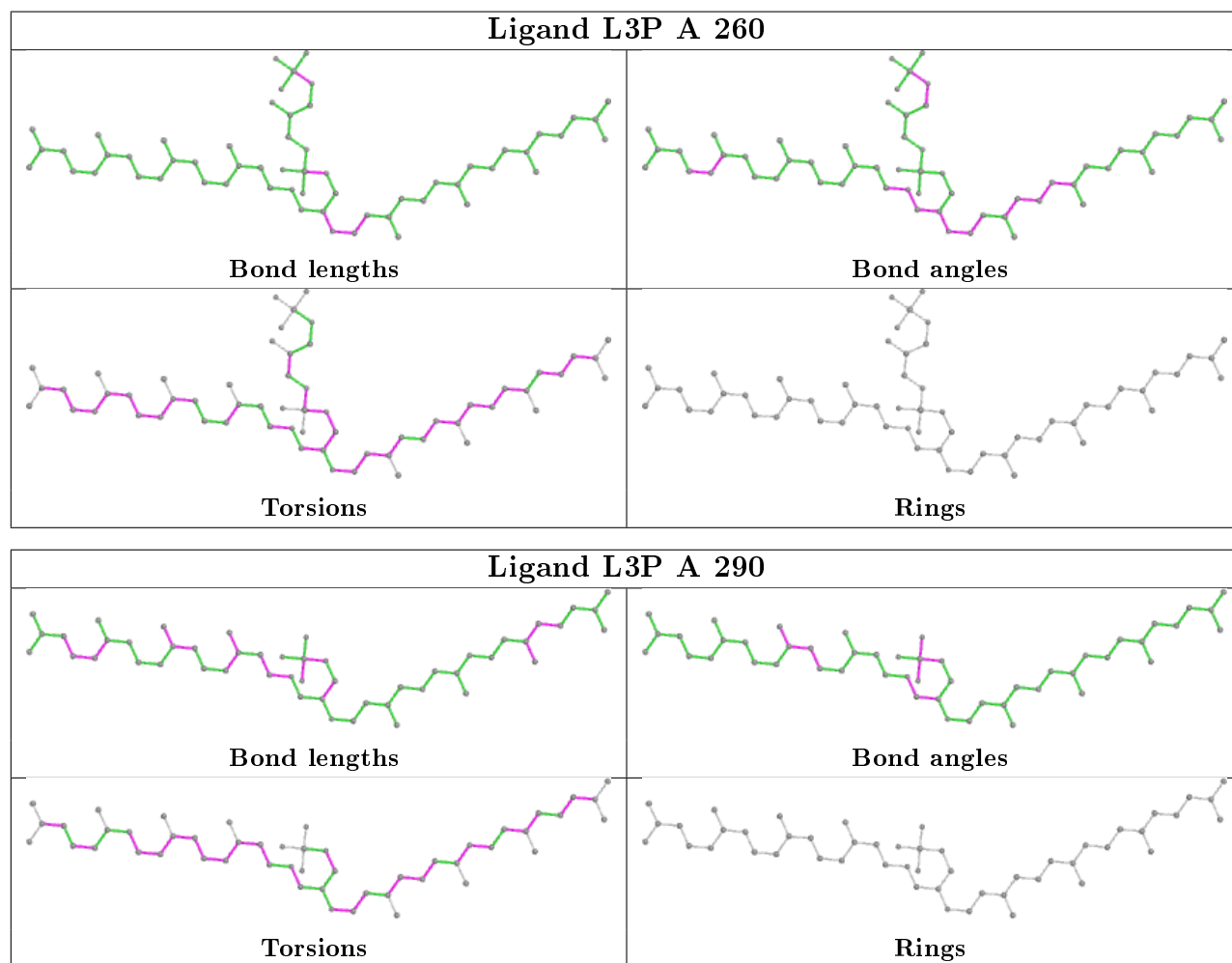
Mol	Chain	Res	Type	Atoms
4	A	260	L3P	C51-C52-C53-C54
4	A	290	L3P	C14-C13-C15-C16
4	A	290	L3P	C54-C53-C55-C56
5	A	270	L2P	C19-C18-C20-C21
5	A	270	L2P	C54-C53-C55-C56
4	A	280	L3P	C44-C43-C45-C46
4	A	280	L3P	C12-C11-O1-C1
4	A	260	L3P	C4-O4-P1-O3
4	A	290	L3P	C11-C12-C13-C15
5	A	270	L2P	C22-C23-C25-C26
4	A	300	L3P	C16-C17-C18-C20
4	A	260	L3P	C16-C17-C18-C19
4	A	260	L3P	C46-C47-C48-C49
4	A	300	L3P	C44-C43-C45-C46
4	A	300	L3P	C41-C42-C43-C45
4	A	300	L3P	C49-C48-C50-C51
4	A	290	L3P	C17-C18-C20-C21
5	A	270	L2P	C1-C2-C3-O3
4	A	280	L3P	C1-C2-C3-O3
4	A	300	L3P	C53-C55-C56-C57
4	A	290	L3P	C44-C43-C45-C46
5	A	270	L2P	C44-C43-C45-C46
4	A	300	L3P	C24-C23-C25-C26
4	A	280	L3P	C14-C13-C15-C16
4	A	280	L3P	C54-C53-C55-C56
5	A	270	L2P	C12-C11-O1-C1
5	A	270	L2P	C21-C22-C23-C25
4	A	300	L3P	C46-C47-C48-C50
4	A	300	L3P	C47-C48-C50-C51
4	A	300	L3P	C46-C47-C48-C49
4	A	260	L3P	O2-C41-C42-C43
4	A	300	L3P	C19-C18-C20-C21
5	A	270	L2P	C42-C43-C45-C46
4	A	280	L3P	C42-C43-C45-C46

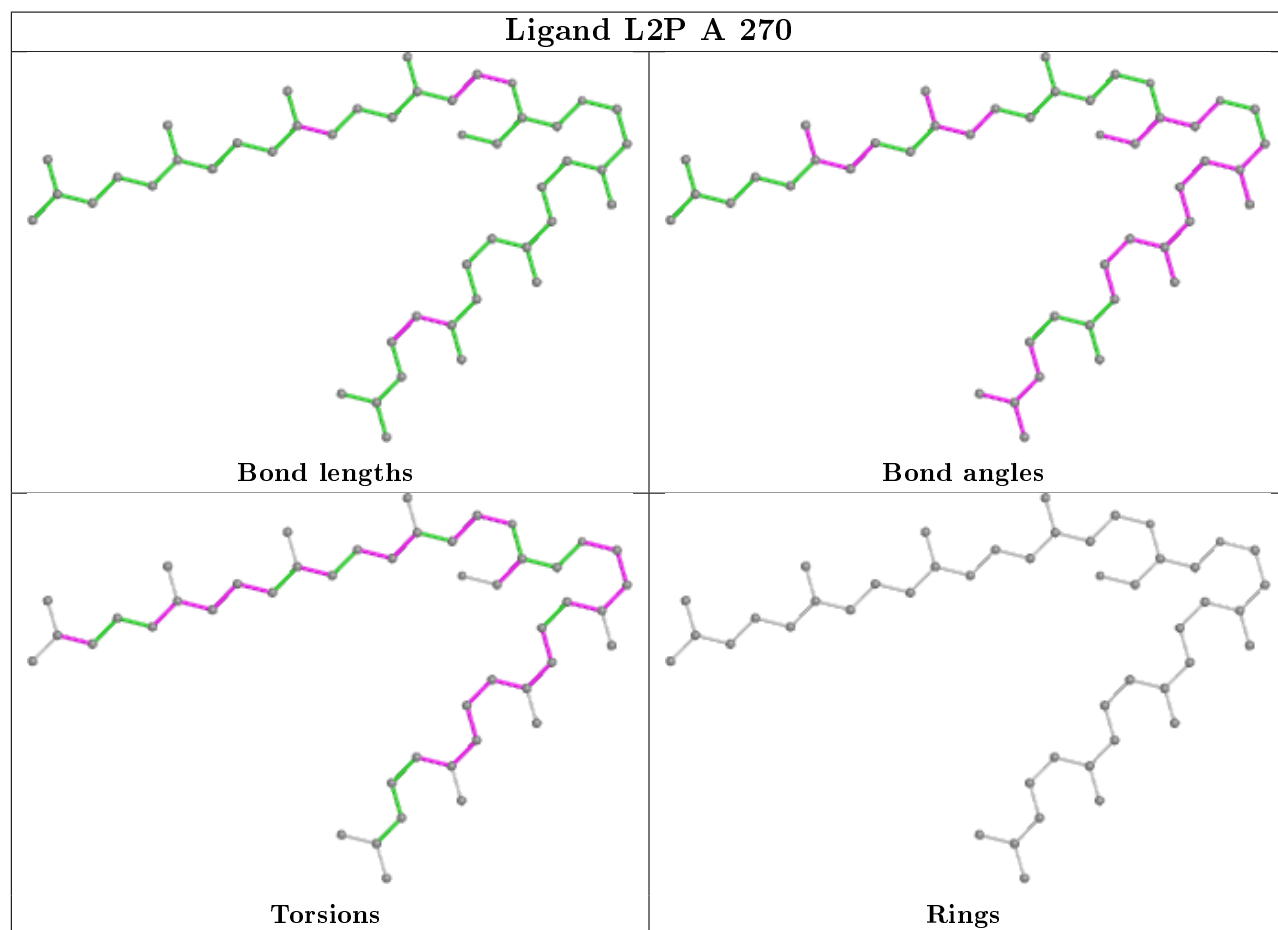
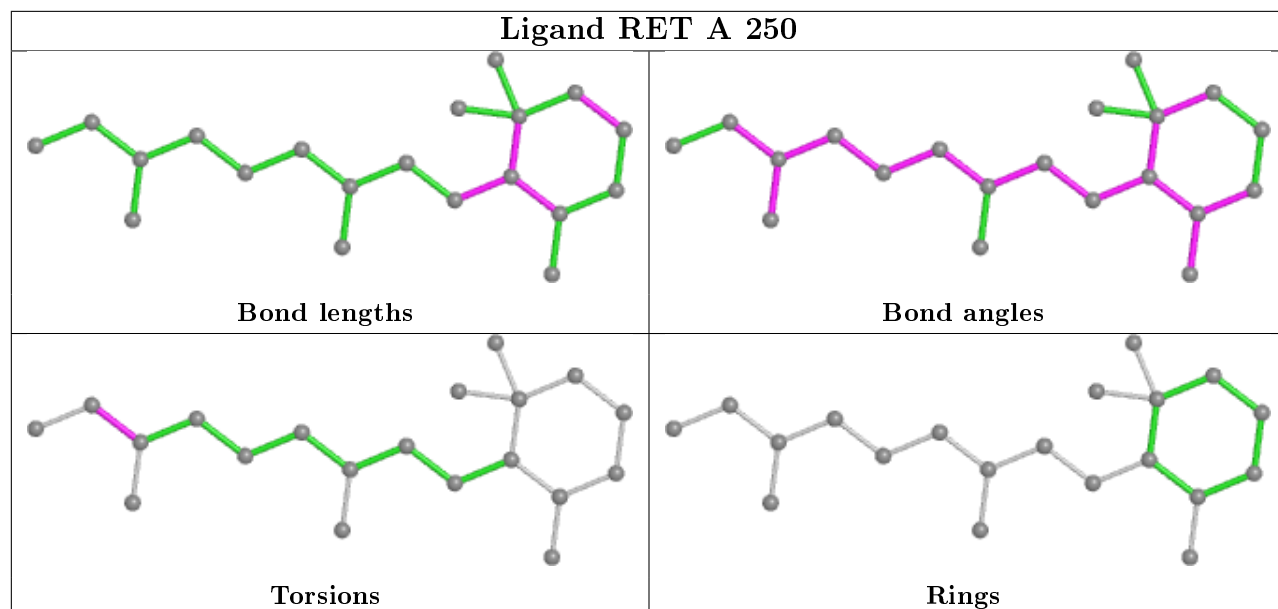
There are no ring outliers.

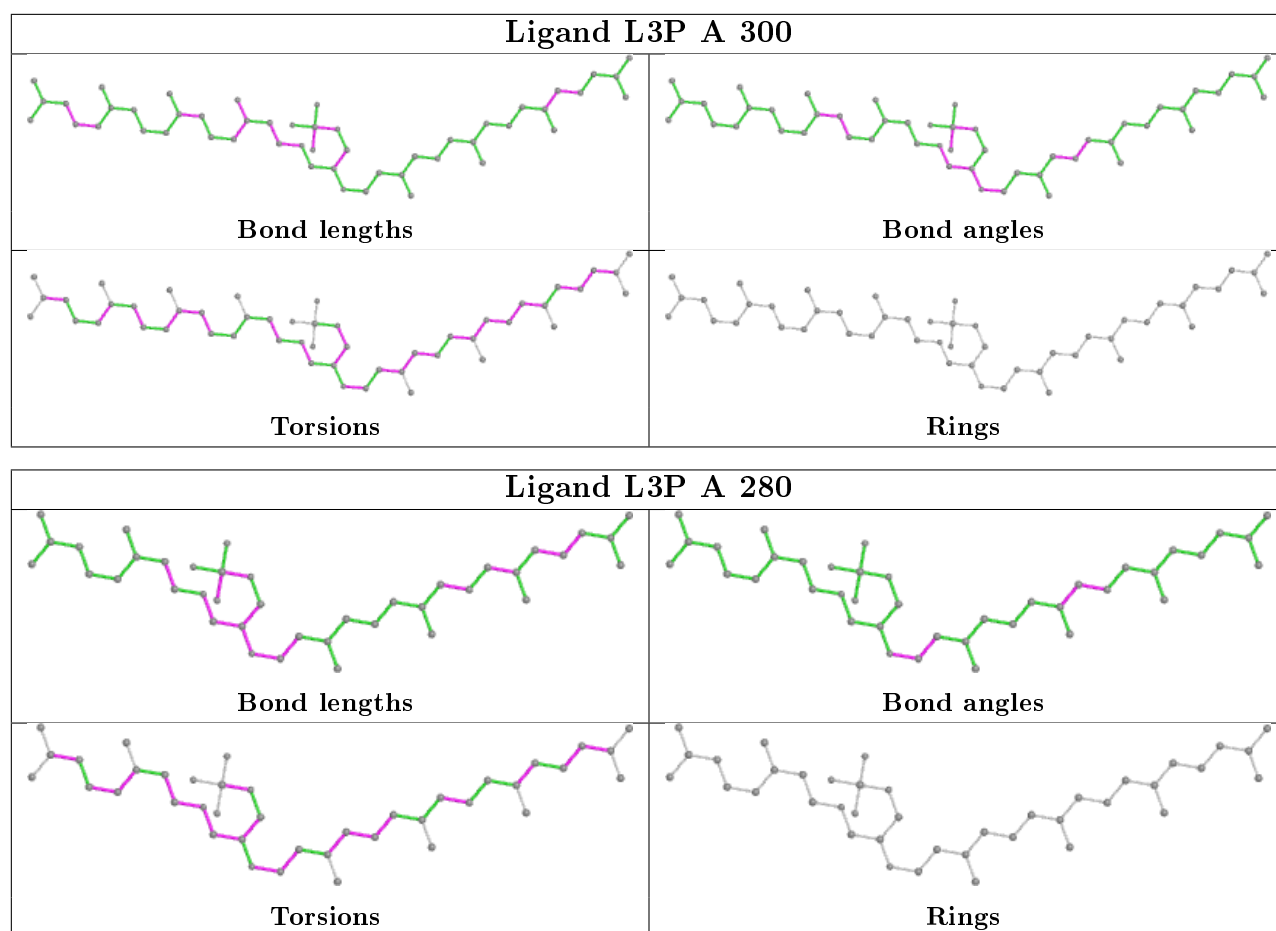
3 monomers are involved in 10 short contacts:

Mol	Chain	Res	Type	Clashes	Symm-Clashes
4	A	260	L3P	4	0
3	A	250	RET	4	0
5	A	270	L2P	2	0

The following is a two-dimensional graphical depiction of Mogul quality analysis of bond lengths, bond angles, torsion angles, and ring geometry for all instances of the Ligand of Interest. In addition, ligands with molecular weight > 250 and outliers as shown on the validation Tables will also be included. For torsion angles, if less than 5% of the Mogul distribution of torsion angles is within 10 degrees of the torsion angle in question, then that torsion angle is considered an outlier. Any bond that is central to one or more torsion angles identified as an outlier by Mogul will be highlighted in the graph. For rings, the root-mean-square deviation (RMSD) between the ring in question and similar rings identified by Mogul is calculated over all ring torsion angles. If the average RMSD is greater than 60 degrees and the minimal RMSD between the ring in question and any Mogul-identified rings is also greater than 60 degrees, then that ring is considered an outlier. The outliers are highlighted in purple. The color gray indicates Mogul did not find sufficient equivalents in the CSD to analyse the geometry.







## 5.7 Other polymers [i](#)

There are no such residues in this entry.

## 5.8 Polymer linkage issues [i](#)

There are no chain breaks in this entry.



## 6 Fit of model and data ⓘ

### 6.1 Protein, DNA and RNA chains ⓘ

EDS was not executed - this section is therefore empty.

### 6.2 Non-standard residues in protein, DNA, RNA chains ⓘ

EDS was not executed - this section is therefore empty.

### 6.3 Carbohydrates ⓘ

EDS was not executed - this section is therefore empty.

### 6.4 Ligands ⓘ

EDS was not executed - this section is therefore empty.

### 6.5 Other polymers ⓘ

EDS was not executed - this section is therefore empty.