



# Full wwPDB X-ray Structure Validation Report ⓘ

Aug 25, 2020 – 04:07 PM BST

PDB ID : 4IXV  
Title : Crystal structure of human Arginase-2 complexed with inhibitor 2d: {(5R)-5-amino-5-carboxy-5-[1-(4-chlorobenzyl)piperidin-4-yl]pentyl}(trihydroxy)borate(1-)  
Authors : Cousido-Siah, A.; Mitschler, A.; Ruiz, F.X.; Whitehouse, D.; Beckett, P.; Van Zandt, M.C.; Ji, M.K.; Ryder, T.; Jagdmann, R.; Andreoli, M.; Olczak, J.; Mazur, M.; Czystkowski, W.; Piotrowska, W.; Schroeter, H.; Golebiowski, A.; Podjarny, A.  
Deposited on : 2013-01-28  
Resolution : 2.30 Å(reported)

This is a Full wwPDB X-ray Structure Validation Report for a publicly released PDB entry.

We welcome your comments at [validation@mail.wwpdb.org](mailto:validation@mail.wwpdb.org)

A user guide is available at

<https://www.wwpdb.org/validation/2017/XrayValidationReportHelp>  
with specific help available everywhere you see the ⓘ symbol.

---

The following versions of software and data (see [references ⓘ](#)) were used in the production of this report:

MolProbity	:	4.02b-467
Mogul	:	1.8.5 (274361), CSD as541be (2020)
Xtriage (Phenix)	:	1.13
EDS	:	2.13
buster-report	:	1.1.7 (2018)
Percentile statistics	:	20191225.v01 (using entries in the PDB archive December 25th 2019)
Refmac	:	5.8.0158
CCP4	:	7.0.044 (Gargrove)
Ideal geometry (proteins)	:	Engh & Huber (2001)
Ideal geometry (DNA, RNA)	:	Parkinson et al. (1996)
Validation Pipeline (wwPDB-VP)	:	2.13

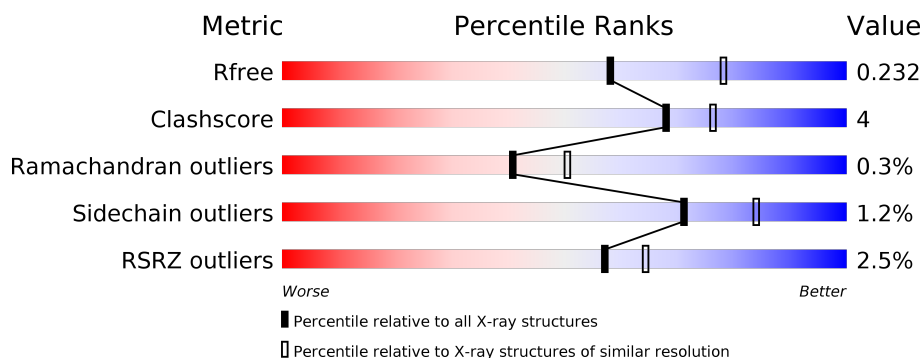
# 1 Overall quality at a glance

The following experimental techniques were used to determine the structure:

## *X-RAY DIFFRACTION*

The reported resolution of this entry is 2.30 Å.

Percentile scores (ranging between 0-100) for global validation metrics of the entry are shown in the following graphic. The table shows the number of entries on which the scores are based.



Metric	Whole archive (#Entries)	Similar resolution (#Entries, resolution range(Å))
$R_{free}$	130704	5042 (2.30-2.30)
Clashscore	141614	5643 (2.30-2.30)
Ramachandran outliers	138981	5575 (2.30-2.30)
Sidechain outliers	138945	5575 (2.30-2.30)
RSRZ outliers	127900	4938 (2.30-2.30)

The table below summarises the geometric issues observed across the polymeric chains and their fit to the electron density. The red, orange, yellow and green segments on the lower bar indicate the fraction of residues that contain outliers for  $\geq 3$ , 2, 1 and 0 types of geometric quality criteria respectively. A grey segment represents the fraction of residues that are not modelled. The numeric value for each fraction is indicated below the corresponding segment, with a dot representing fractions  $\leq 5\%$ . The upper red bar (where present) indicates the fraction of residues that have poor fit to the electron density. The numeric value is given above the bar.

Mol	Chain	Length	Quality of chain
1	A	306	<div> <div>3%</div> <div> <div></div> <div>89%</div> <div>11%</div> </div> </div>
1	B	306	<div> <div>%</div> <div> <div></div> <div>92%</div> <div>8%</div> </div> </div>
1	C	306	<div> <div>4%</div> <div> <div></div> <div>91%</div> <div>9%</div> </div> </div>

## 2 Entry composition

There are 6 unique types of molecules in this entry. The entry contains 7908 atoms, of which 0 are hydrogens and 0 are deuteriums.

In the tables below, the ZeroOcc column contains the number of atoms modelled with zero occupancy, the AltConf column contains the number of residues with at least one atom in alternate conformation and the Trace column contains the number of residues modelled with at most 2 atoms.

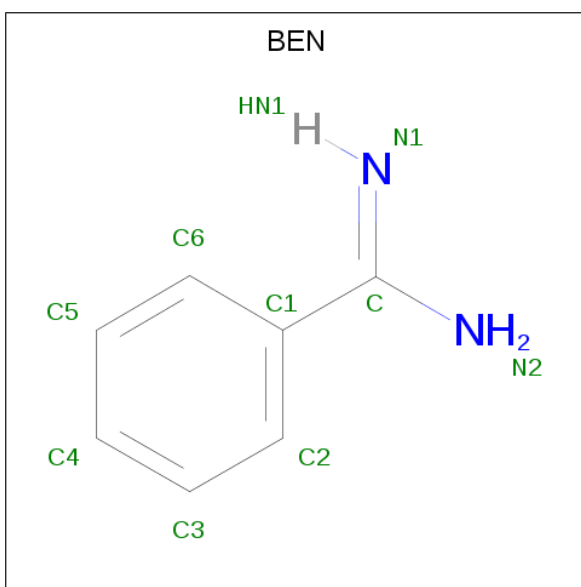
- Molecule 1 is a protein called Arginase-2, mitochondrial.

Mol	Chain	Residues	Atoms					ZeroOcc	AltConf	Trace
1	A	306	Total	C	N	O	S	0	14	0
			2379	1504	408	458	9			
1	B	306	Total	C	N	O	S	0	12	0
			2374	1497	410	457	10			
1	C	306	Total	C	N	O	S	0	14	0
			2389	1513	412	454	10			

- Molecule 2 is MANGANESE (II) ION (three-letter code: MN) (formula: Mn).

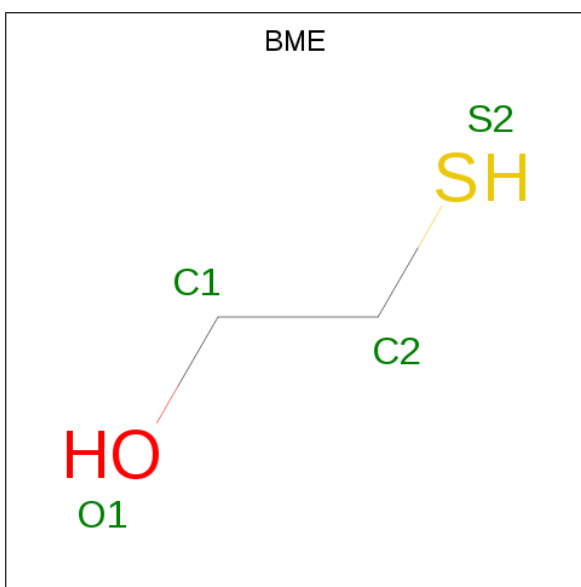
Mol	Chain	Residues	Atoms		ZeroOcc	AltConf
2	B	2	Total	Mn	0	0
			2	2		
2	A	2	Total	Mn	0	0
			2	2		
2	C	2	Total	Mn	0	0
			2	2		

- Molecule 3 is BENZAMIDINE (three-letter code: BEN) (formula: C<sub>7</sub>H<sub>8</sub>N<sub>2</sub>).



Mol	Chain	Residues	Atoms			ZeroOcc	AltConf
3	A	1	Total	C	N	0	0
			9	7	2		
3	B	1	Total	C	N	0	0
			9	7	2		
3	C	1	Total	C	N	0	0
			9	7	2		

- Molecule 4 is BETA-MERCAPTOETHANOL (three-letter code: BME) (formula: C<sub>2</sub>H<sub>6</sub>OS).



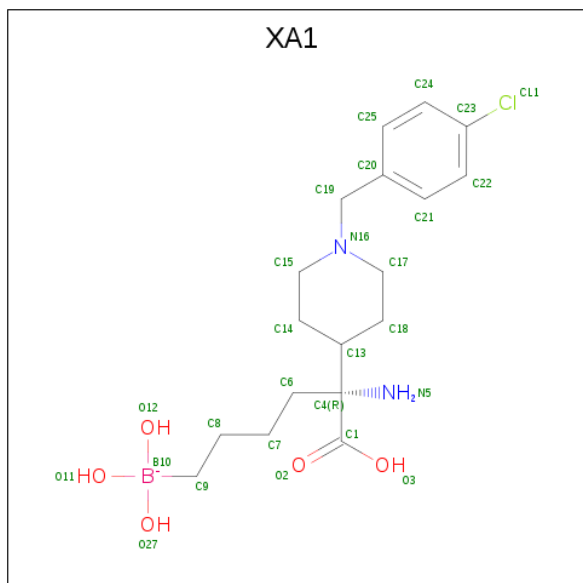
Mol	Chain	Residues	Atoms				ZeroOcc	AltConf
4	A	1	Total	C	O	S	0	1
			4	2	1	1		

Continued on next page...

Continued from previous page...

Mol	Chain	Residues	Atoms				ZeroOcc	AltConf
4	B	1	Total	C	O	S	0	1
			4	2	1	1		
4	C	1	Total	C	O	S	0	1
			4	2	1	1		

- Molecule 5 is {(5R)-5-amino-5-carboxy-5-[1-(4-chlorobenzyl)piperidin-4-yl]pentyl}(trihydroxy)borate(1-) (three-letter code: XA1) (formula: C<sub>18</sub>H<sub>29</sub>BClN<sub>2</sub>O<sub>5</sub>).



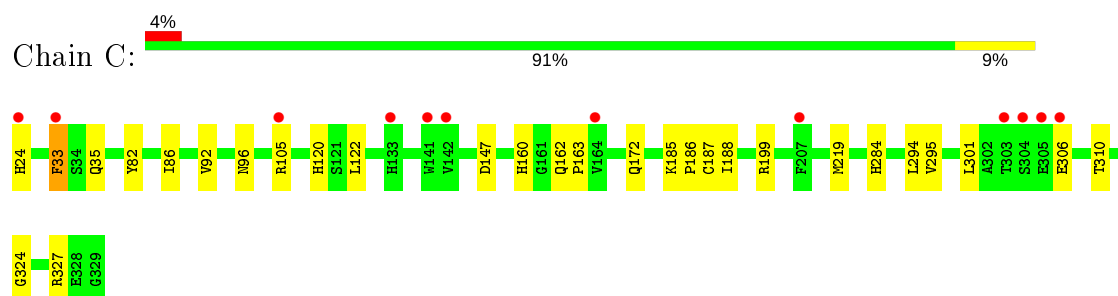
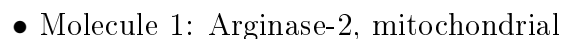
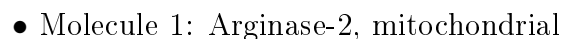
Mol	Chain	Residues	Atoms						ZeroOcc	AltConf
5	A	1	Total	B	C	Cl	N	O	0	0
			27	1	18	1	2	5		
5	B	1	Total	B	C	Cl	N	O	0	0
			27	1	18	1	2	5		
5	C	1	Total	B	C	Cl	N	O	0	0
			27	1	18	1	2	5		

- Molecule 6 is water.

Mol	Chain	Residues	Atoms		ZeroOcc	AltConf
6	A	221	Total	O	0	1
			222	222		
6	B	220	Total	O	0	2
			222	222		
6	C	192	Total	O	0	4
			196	196		



- Molecule 1: Arginase-2, mitochondrial



## 4 Data and refinement statistics

Property	Value	Source
Space group	P 42 21 2	Depositor
Cell constants a, b, c, $\alpha$ , $\beta$ , $\gamma$	128.12Å 128.12Å 159.36Å 90.00° 90.00° 90.00°	Depositor
Resolution (Å)	33.83 – 2.30 33.83 – 2.30	Depositor EDS
% Data completeness (in resolution range)	92.4 (33.83-2.30) 92.4 (33.83-2.30)	Depositor EDS
$R_{merge}$	(Not available)	Depositor
$R_{sym}$	0.13	Depositor
$\langle I/\sigma(I) \rangle$ <sup>1</sup>	3.32 (at 2.29Å)	Xtriage
Refinement program	PHENIX 1.8_1069	Depositor
R, $R_{free}$	0.180 , 0.232 0.180 , 0.232	Depositor DCC
$R_{free}$ test set	2775 reflections (5.05%)	wwPDB-VP
Wilson B-factor (Å <sup>2</sup> )	28.1	Xtriage
Anisotropy	0.006	Xtriage
Bulk solvent $k_{sol}$ (e/Å <sup>3</sup> ), $B_{sol}$ (Å <sup>2</sup> )	0.36 , 45.3	EDS
L-test for twinning <sup>2</sup>	$\langle  L  \rangle = 0.48$ , $\langle L^2 \rangle = 0.32$	Xtriage
Estimated twinning fraction	No twinning to report.	Xtriage
$F_o, F_c$ correlation	0.94	EDS
Total number of atoms	7908	wwPDB-VP
Average B, all atoms (Å <sup>2</sup> )	17.0	wwPDB-VP

Xtriage's analysis on translational NCS is as follows: *The largest off-origin peak in the Patterson function is 2.65% of the height of the origin peak. No significant pseudotranslation is detected.*

<sup>1</sup>Intensities estimated from amplitudes.

<sup>2</sup>Theoretical values of  $\langle |L| \rangle$ ,  $\langle L^2 \rangle$  for acentric reflections are 0.5, 0.333 respectively for untwinned datasets, and 0.375, 0.2 for perfectly twinned datasets.

## 5 Model quality [i](#)

### 5.1 Standard geometry [i](#)

Bond lengths and bond angles in the following residue types are not validated in this section: XA1, MN, BEN, BME

The Z score for a bond length (or angle) is the number of standard deviations the observed value is removed from the expected value. A bond length (or angle) with  $|Z| > 5$  is considered an outlier worth inspection. RMSZ is the root-mean-square of all Z scores of the bond lengths (or angles).

Mol	Chain	Bond lengths		Bond angles	
		RMSZ	# Z  >5	RMSZ	# Z  >5
1	A	0.50	0/2459	0.63	0/3344
1	B	0.47	0/2442	0.60	0/3321
1	C	0.48	0/2473	0.62	0/3362
All	All	0.48	0/7374	0.62	0/10027

Chiral center outliers are detected by calculating the chiral volume of a chiral center and verifying if the center is modelled as a planar moiety or with the opposite hand. A planarity outlier is detected by checking planarity of atoms in a peptide group, atoms in a mainchain group or atoms of a sidechain that are expected to be planar.

Mol	Chain	#Chirality outliers	#Planarity outliers
1	C	0	1

There are no bond length outliers.

There are no bond angle outliers.

There are no chirality outliers.

All (1) planarity outliers are listed below:

Mol	Chain	Res	Type	Group
1	C	33[A]	PHE	Mainchain

### 5.2 Too-close contacts [i](#)

In the following table, the Non-H and H(model) columns list the number of non-hydrogen atoms and hydrogen atoms in the chain respectively. The H(added) column lists the number of hydrogen atoms added and optimized by MolProbity. The Clashes column lists the number of clashes within the asymmetric unit, whereas Symm-Clashes lists symmetry related clashes.



Mol	Chain	Non-H	H(model)	H(added)	Clashes	Symm-Clashes
1	A	2379	0	2379	26	0
1	B	2374	0	2361	12	0
1	C	2389	0	2397	20	0
2	A	2	0	0	0	0
2	B	2	0	0	0	0
2	C	2	0	0	0	0
3	A	9	0	7	0	0
3	B	9	0	7	0	0
3	C	9	0	7	0	0
4	A	4	0	6	0	0
4	B	4	0	6	0	0
4	C	4	0	6	1	0
5	A	27	0	26	0	0
5	B	27	0	26	0	0
5	C	27	0	26	0	0
6	A	222	0	0	1	0
6	B	222	0	0	1	0
6	C	196	0	0	0	0
All	All	7908	0	7254	55	0

The all-atom clashscore is defined as the number of clashes found per 1000 atoms (including hydrogen atoms). The all-atom clashscore for this structure is 4.

All (55) close contacts within the same asymmetric unit are listed below, sorted by their clash magnitude.

Atom-1	Atom-2	Interatomic distance (Å)	Clash overlap (Å)
1:C:172[B]:GLN:HG3	1:C:186:PRO:HG3	1.54	0.89
1:B:172[B]:GLN:HG3	1:B:186:PRO:HG3	1.53	0.89
1:C:33[B]:PHE:HE2	1:C:92:VAL:HG22	1.42	0.84
1:A:108:SER:HA	1:A:133:HIS:CE1	2.18	0.78
1:A:169:ARG:HH21	1:A:189[A]:SER:HB2	1.59	0.67
1:A:137:LEU:HD11	1:A:188:ILE:HD11	1.76	0.67
1:C:33[B]:PHE:CE2	1:C:92:VAL:HG22	2.29	0.66
1:A:166:PHE:O	1:A:186:PRO:HB3	1.96	0.64
1:A:187:CYS:O	1:A:188:ILE:HG13	2.00	0.61
1:C:33[B]:PHE:CZ	1:C:35:GLN:HB2	2.38	0.58
1:B:147:ASP:HB3	1:B:163:PRO:HD2	1.86	0.58
1:A:147:ASP:HB3	1:A:163:PRO:HD2	1.86	0.57
1:A:199:ARG:HA	1:C:327:ARG:O	2.04	0.57
1:A:120:HIS:CG	1:A:295:VAL:HG21	2.42	0.53
1:A:306:GLU:O	1:A:310[B]:THR:HG23	2.09	0.53
1:A:327:ARG:O	1:B:199:ARG:HA	2.09	0.53

*Continued on next page...*

*Continued from previous page...*

Atom-1	Atom-2	Interatomic distance (Å)	Clash overlap (Å)
1:B:327:ARG:O	1:C:199:ARG:HA	2.09	0.53
1:B:199:ARG:HD3	1:B:219:MET:HG3	1.92	0.52
1:C:199:ARG:HD3	1:C:219:MET:HG3	1.92	0.51
1:C:147:ASP:HB3	1:C:163:PRO:HD2	1.92	0.51
1:A:199:ARG:HD3	1:A:219:MET:HG3	1.91	0.51
1:A:137:LEU:HD11	1:A:188:ILE:CD1	2.41	0.50
1:B:120:HIS:CG	1:B:295:VAL:HG21	2.47	0.50
1:B:306:GLU:O	1:B:310[B]:THR:HG23	2.12	0.49
1:C:24:HIS:HB2	4:C:404[B]:BME:H21	1.95	0.48
1:A:25:SER:HB3	1:A:111:TYR:CD1	2.49	0.47
1:A:82:TYR:HB3	1:A:86:ILE:HB	1.97	0.47
1:B:25:SER:HB3	1:B:111:TYR:CD1	2.50	0.47
1:C:185:LYS:HA	1:C:186:PRO:HD2	1.78	0.46
1:C:187:CYS:C	1:C:188:ILE:HG12	2.36	0.45
1:C:120:HIS:CG	1:C:295:VAL:HG21	2.53	0.45
1:A:187:CYS:O	1:A:188:ILE:CG1	2.65	0.44
1:B:105:ARG:HB3	6:B:629:HOH:O	2.18	0.44
1:B:50:ARG:HH12	1:B:67:ASP:CG	2.20	0.44
1:B:50:ARG:NH1	1:B:67:ASP:OD2	2.50	0.44
1:C:96:ASN:OD1	1:C:122[A]:LEU:HA	2.18	0.43
1:C:82:TYR:HB3	1:C:86:ILE:HB	2.00	0.43
1:A:137:LEU:CD1	1:A:188:ILE:HD11	2.46	0.43
1:C:33[A]:PHE:HB2	1:C:122[A]:LEU:HD23	2.00	0.43
1:A:108:SER:HA	1:A:133:HIS:NE2	2.34	0.42
1:B:96:ASN:OD1	1:B:122[A]:LEU:HA	2.19	0.42
1:C:105:ARG:HA	1:C:105:ARG:HD2	1.84	0.42
1:A:50:ARG:NH1	1:A:67:ASP:OD2	2.52	0.42
1:A:169:ARG:NH2	1:A:189[A]:SER:HB2	2.30	0.41
1:A:105:ARG:HA	1:A:105:ARG:HD2	1.90	0.41
1:A:39:ARG:NH2	6:A:641:HOH:O	2.47	0.41
1:A:96:ASN:OD1	1:A:122[A]:LEU:HA	2.20	0.41
1:C:301:LEU:HA	1:C:301:LEU:HD23	1.88	0.41
1:C:185:LYS:HD3	1:C:185:LYS:HA	1.79	0.41
1:A:108:SER:CA	1:A:133:HIS:CE1	2.99	0.41
1:C:284:HIS:CD2	1:C:324:GLY:HA2	2.56	0.41
1:A:169:ARG:O	1:A:172[A]:GLN:HG3	2.21	0.40
1:A:185:LYS:HA	1:A:186:PRO:HD2	1.93	0.40
1:C:306:GLU:O	1:C:310[B]:THR:HG23	2.21	0.40
1:A:133:HIS:O	1:A:135:PRO:HD3	2.21	0.40

There are no symmetry-related clashes.

## 5.3 Torsion angles

### 5.3.1 Protein backbone

In the following table, the Percentiles column shows the percent Ramachandran outliers of the chain as a percentile score with respect to all X-ray entries followed by that with respect to entries of similar resolution.

The Analysed column shows the number of residues for which the backbone conformation was analysed, and the total number of residues.

Mol	Chain	Analysed	Favoured	Allowed	Outliers	Percentiles	
1	A	314/306 (103%)	307 (98%)	6 (2%)	1 (0%)	41	50
1	B	312/306 (102%)	309 (99%)	2 (1%)	1 (0%)	41	50
1	C	315/306 (103%)	308 (98%)	6 (2%)	1 (0%)	41	50
All	All	941/918 (102%)	924 (98%)	14 (2%)	3 (0%)	41	50

All (3) Ramachandran outliers are listed below:

Mol	Chain	Res	Type
1	A	162	GLN
1	C	162	GLN
1	B	162	GLN

### 5.3.2 Protein sidechains

In the following table, the Percentiles column shows the percent sidechain outliers of the chain as a percentile score with respect to all X-ray entries followed by that with respect to entries of similar resolution.

The Analysed column shows the number of residues for which the sidechain conformation was analysed, and the total number of residues.

Mol	Chain	Analysed	Rotameric	Outliers	Percentiles	
1	A	267/257 (104%)	264 (99%)	3 (1%)	73	86
1	B	265/257 (103%)	261 (98%)	4 (2%)	65	79
1	C	268/257 (104%)	266 (99%)	2 (1%)	84	92
All	All	800/771 (104%)	791 (99%)	9 (1%)	71	86

All (9) residues with a non-rotameric sidechain are listed below:

Mol	Chain	Res	Type
1	A	160	HIS
1	A	185	LYS
1	A	294	LEU
1	B	160	HIS
1	B	187	CYS
1	B	294	LEU
1	B	305	GLU
1	C	160	HIS
1	C	294	LEU

Some sidechains can be flipped to improve hydrogen bonding and reduce clashes. All (1) such sidechains are listed below:

Mol	Chain	Res	Type
1	A	133	HIS

### 5.3.3 RNA [i](#)

There are no RNA molecules in this entry.

## 5.4 Non-standard residues in protein, DNA, RNA chains [i](#)

There are no non-standard protein/DNA/RNA residues in this entry.

## 5.5 Carbohydrates [i](#)

There are no monosaccharides in this entry.

## 5.6 Ligand geometry [i](#)

Of 15 ligands modelled in this entry, 6 are monoatomic - leaving 9 for Mogul analysis.

In the following table, the Counts columns list the number of bonds (or angles) for which Mogul statistics could be retrieved, the number of bonds (or angles) that are observed in the model and the number of bonds (or angles) that are defined in the Chemical Component Dictionary. The Link column lists molecule types, if any, to which the group is linked. The Z score for a bond length (or angle) is the number of standard deviations the observed value is removed from the expected value. A bond length (or angle) with  $|Z| > 2$  is considered an outlier worth inspection. RMSZ is the root-mean-square of all Z scores of the bond lengths (or angles).

Mol	Type	Chain	Res	Link	Bond lengths			Bond angles		
					Counts	RMSZ	# Z  > 2	Counts	RMSZ	# Z  > 2
4	BME	B	404[B]	-	3,3,3	0.33	0	1,2,2	0.48	0
3	BEN	C	403	-	9,9,9	0.97	1 (11%)	7,11,11	0.49	0
3	BEN	A	403	-	9,9,9	0.77	0	7,11,11	0.78	0
5	XA1	B	405	2	20,28,28	0.83	1 (5%)	25,40,40	1.36	4 (16%)
4	BME	C	404[B]	-	3,3,3	0.31	0	1,2,2	0.49	0
5	XA1	C	405	2	20,28,28	0.85	1 (5%)	25,40,40	1.48	5 (20%)
5	XA1	A	405	2	20,28,28	0.92	1 (5%)	25,40,40	1.28	1 (4%)
3	BEN	B	403	-	9,9,9	0.74	0	7,11,11	0.65	0
4	BME	A	404[B]	-	3,3,3	0.34	0	1,2,2	0.45	0

In the following table, the Chirals column lists the number of chiral outliers, the number of chiral centers analysed, the number of these observed in the model and the number defined in the Chemical Component Dictionary. Similar counts are reported in the Torsion and Rings columns. '-' means no outliers of that kind were identified.

Mol	Type	Chain	Res	Link	Chirals	Torsions	Rings
4	BME	B	404[B]	-	-	0/1/1/1	-
3	BEN	C	403	-	-	0/4/4/4	0/1/1/1
3	BEN	A	403	-	-	0/4/4/4	0/1/1/1
5	XA1	B	405	2	-	4/14/35/35	0/2/2/2
4	BME	C	404[B]	-	-	0/1/1/1	-
5	XA1	C	405	2	-	1/14/35/35	0/2/2/2
5	XA1	A	405	2	-	1/14/35/35	0/2/2/2
3	BEN	B	403	-	-	0/4/4/4	0/1/1/1
4	BME	A	404[B]	-	-	0/1/1/1	-

All (4) bond length outliers are listed below:

Mol	Chain	Res	Type	Atoms	Z	Observed(Å)	Ideal(Å)
5	A	405	XA1	C23-CL1	2.80	1.80	1.74
5	C	405	XA1	C23-CL1	2.79	1.80	1.74
5	B	405	XA1	C23-CL1	2.71	1.80	1.74
3	C	403	BEN	C1-C	2.29	1.51	1.47

All (10) bond angle outliers are listed below:

Mol	Chain	Res	Type	Atoms	Z	Observed(°)	Ideal(°)
5	C	405	XA1	C14-C15-N16	3.48	116.52	111.11
5	B	405	XA1	C14-C15-N16	2.92	115.65	111.11
5	A	405	XA1	O12-B10-O27	-2.78	99.20	109.18
5	C	405	XA1	O12-B10-O27	-2.72	99.39	109.18

Continued on next page...

*Continued from previous page...*

Mol	Chain	Res	Type	Atoms	Z	Observed(°)	Ideal(°)
5	C	405	XA1	C18-C17-N16	2.48	114.97	111.11
5	B	405	XA1	O12-B10-O27	-2.39	100.58	109.18
5	B	405	XA1	C17-N16-C15	2.33	114.08	108.83
5	C	405	XA1	C17-N16-C15	2.30	114.01	108.83
5	C	405	XA1	C19-N16-C15	-2.22	106.13	111.06
5	B	405	XA1	C19-N16-C15	-2.14	106.30	111.06

There are no chirality outliers.

All (6) torsion outliers are listed below:

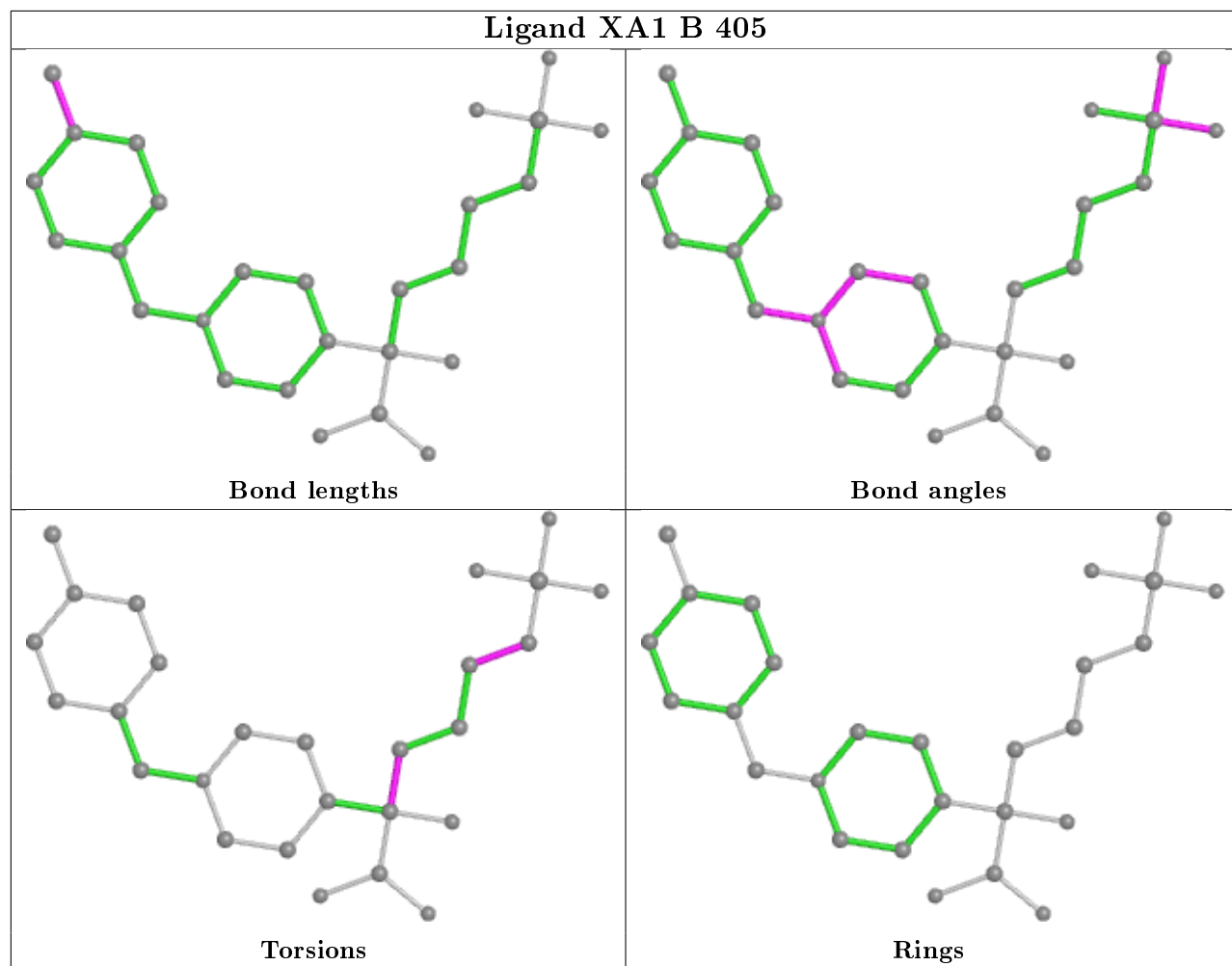
Mol	Chain	Res	Type	Atoms
5	A	405	XA1	C7-C8-C9-B10
5	B	405	XA1	C1-C4-C6-C7
5	B	405	XA1	N5-C4-C6-C7
5	C	405	XA1	C7-C8-C9-B10
5	B	405	XA1	C7-C8-C9-B10
5	B	405	XA1	C13-C4-C6-C7

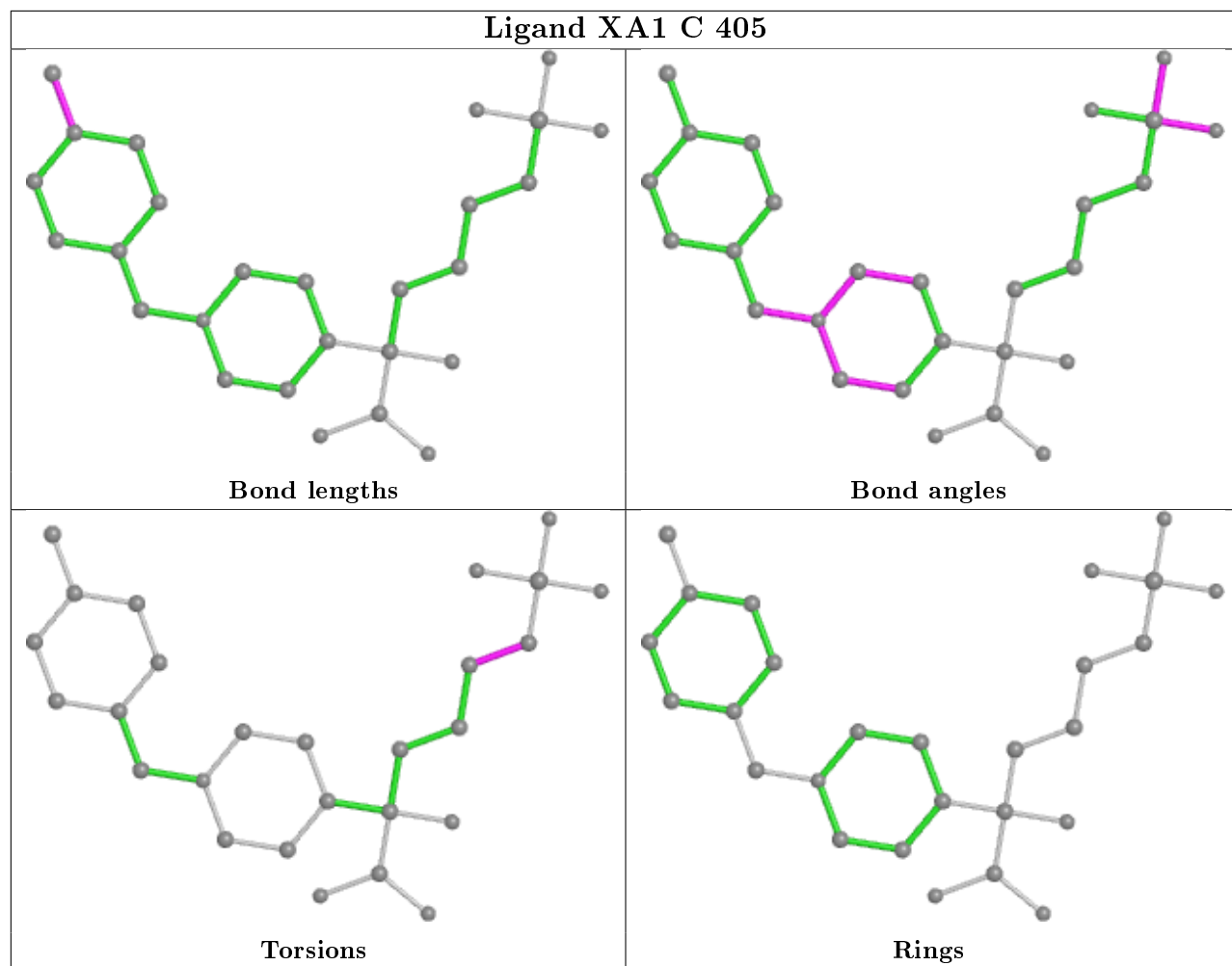
There are no ring outliers.

1 monomer is involved in 1 short contact:

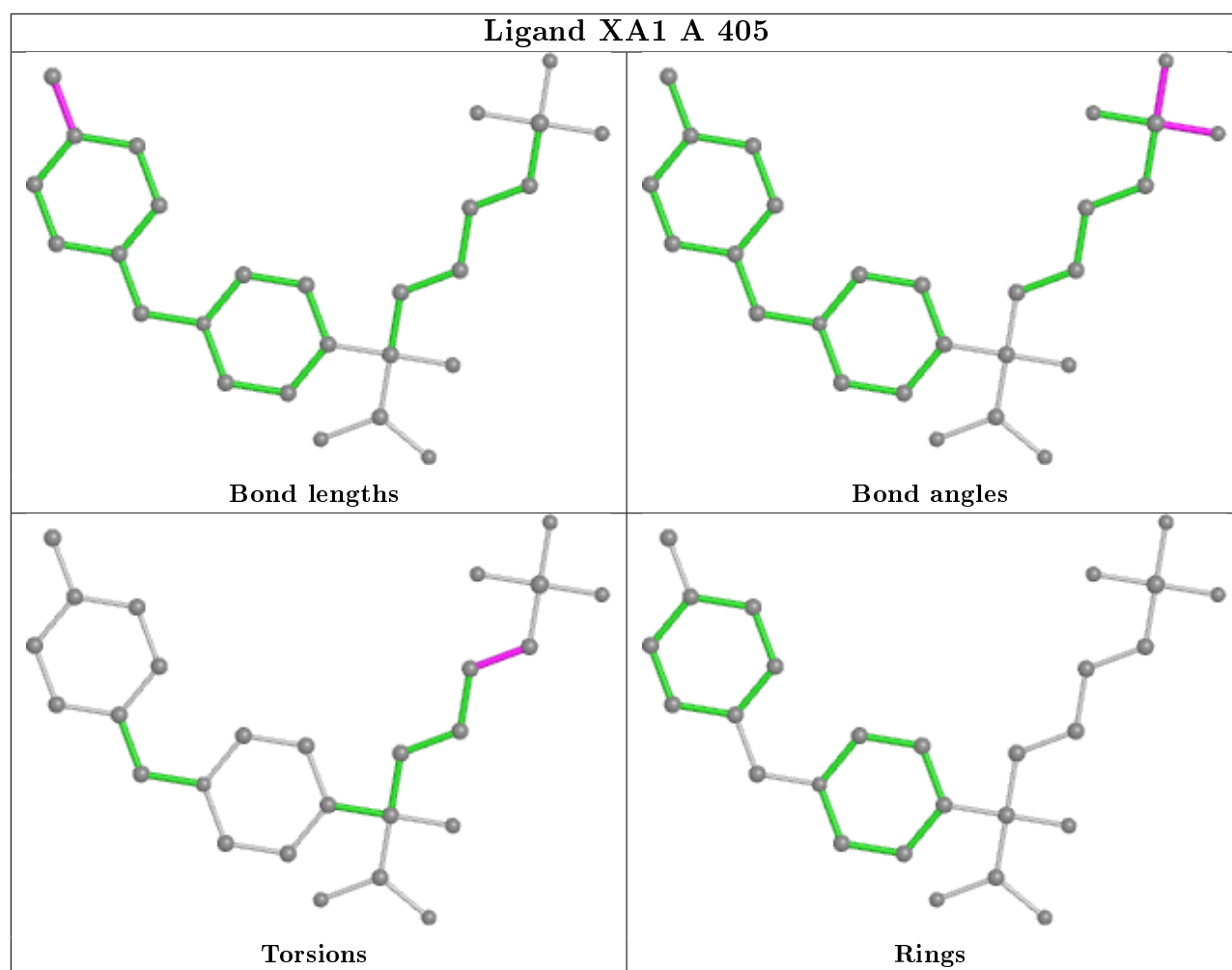
Mol	Chain	Res	Type	Clashes	Symm-Clashes
4	C	404[B]	BME	1	0

The following is a two-dimensional graphical depiction of Mogul quality analysis of bond lengths, bond angles, torsion angles, and ring geometry for all instances of the Ligand of Interest. In addition, ligands with molecular weight > 250 and outliers as shown on the validation Tables will also be included. For torsion angles, if less than 5% of the Mogul distribution of torsion angles is within 10 degrees of the torsion angle in question, then that torsion angle is considered an outlier. Any bond that is central to one or more torsion angles identified as an outlier by Mogul will be highlighted in the graph. For rings, the root-mean-square deviation (RMSD) between the ring in question and similar rings identified by Mogul is calculated over all ring torsion angles. If the average RMSD is greater than 60 degrees and the minimal RMSD between the ring in question and any Mogul-identified rings is also greater than 60 degrees, then that ring is considered an outlier. The outliers are highlighted in purple. The color gray indicates Mogul did not find sufficient equivalents in the CSD to analyse the geometry.









## 5.7 Other polymers [i](#)

There are no such residues in this entry.

## 5.8 Polymer linkage issues [i](#)

There are no chain breaks in this entry.

## 6 Fit of model and data ⓘ

### 6.1 Protein, DNA and RNA chains ⓘ

In the following table, the column labelled ‘#RSRZ> 2’ contains the number (and percentage) of RSRZ outliers, followed by percent RSRZ outliers for the chain as percentile scores relative to all X-ray entries and entries of similar resolution. The OWAB column contains the minimum, median, 95<sup>th</sup> percentile and maximum values of the occupancy-weighted average B-factor per residue. The column labelled ‘Q< 0.9’ lists the number of (and percentage) of residues with an average occupancy less than 0.9.

Mol	Chain	Analysed	<RSRZ>	#RSRZ>2	OWAB(Å <sup>2</sup> )	Q<0.9
1	A	306/306 (100%)	-0.22	8 (2%) 56 63	6, 12, 31, 63	1 (0%)
1	B	306/306 (100%)	-0.32	3 (0%) 82 86	7, 13, 29, 57	1 (0%)
1	C	306/306 (100%)	-0.10	12 (3%) 39 46	6, 16, 37, 62	0
All	All	918/918 (100%)	-0.21	23 (2%) 57 64	6, 14, 33, 63	2 (0%)

All (23) RSRZ outliers are listed below:

Mol	Chain	Res	Type	RSRZ
1	A	24	HIS	5.2
1	C	24	HIS	4.2
1	A	305	GLU	3.6
1	C	133	HIS	3.4
1	A	105	ARG	3.4
1	A	303	THR	3.3
1	A	187	CYS	3.1
1	C	105	ARG	3.1
1	A	173	ASP	2.7
1	B	24	HIS	2.6
1	B	173[A]	ASP	2.6
1	C	305	GLU	2.5
1	C	306	GLU	2.5
1	C	164	VAL	2.4
1	C	141	TRP	2.4
1	C	304	SER	2.2
1	C	303	THR	2.2
1	A	304	SER	2.1
1	C	142	VAL	2.1
1	C	33[A]	PHE	2.1
1	B	62	GLY	2.1
1	C	207	PHE	2.0
1	A	306	GLU	2.0

## 6.2 Non-standard residues in protein, DNA, RNA chains ⓘ

There are no non-standard protein/DNA/RNA residues in this entry.

## 6.3 Carbohydrates ⓘ

There are no monosaccharides in this entry.

## 6.4 Ligands ⓘ

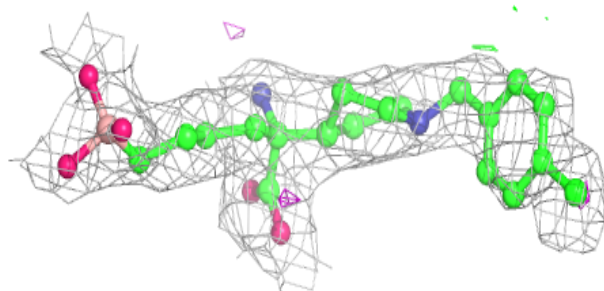
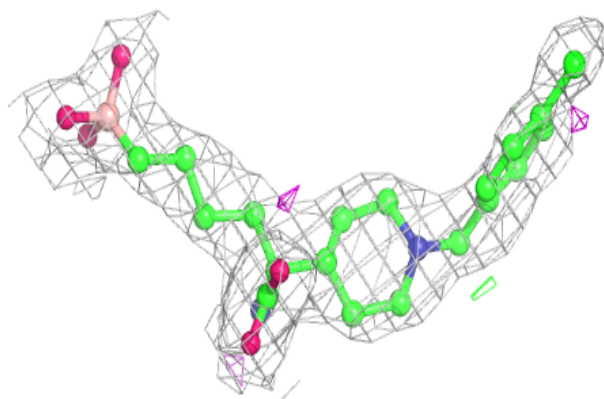
In the following table, the Atoms column lists the number of modelled atoms in the group and the number defined in the chemical component dictionary. The B-factors column lists the minimum, median, 95<sup>th</sup> percentile and maximum values of B factors of atoms in the group. The column labelled 'Q< 0.9' lists the number of atoms with occupancy less than 0.9.

Mol	Type	Chain	Res	Atoms	RSCC	RSR	B-factors( $\text{\AA}^2$ )	Q<0.9
4	BME	C	404[B]	4/4	0.91	0.25	20,20,26,27	4
4	BME	A	404[B]	4/4	0.92	0.17	17,19,21,26	4
5	XA1	C	405	27/27	0.92	0.14	6,15,59,83	0
5	XA1	A	405	27/27	0.93	0.15	5,12,54,69	0
5	XA1	B	405	27/27	0.94	0.13	5,16,51,57	0
3	BEN	B	403	9/9	0.95	0.12	10,14,22,24	0
4	BME	B	404[B]	4/4	0.96	0.10	18,20,22,24	4
3	BEN	C	403	9/9	0.97	0.10	9,17,22,26	0
3	BEN	A	403	9/9	0.98	0.08	8,9,13,17	0
2	MN	A	401	1/1	0.99	0.10	8,8,8,8	0
2	MN	B	401	1/1	0.99	0.09	8,8,8,8	0
2	MN	C	402	1/1	0.99	0.09	10,10,10,10	0
2	MN	A	402	1/1	1.00	0.08	9,9,9,9	0
2	MN	C	401	1/1	1.00	0.11	10,10,10,10	0
2	MN	B	402	1/1	1.00	0.07	10,10,10,10	0

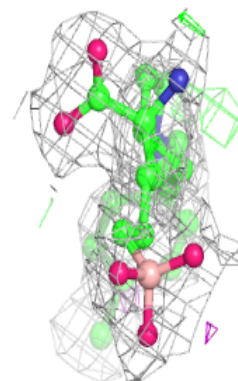
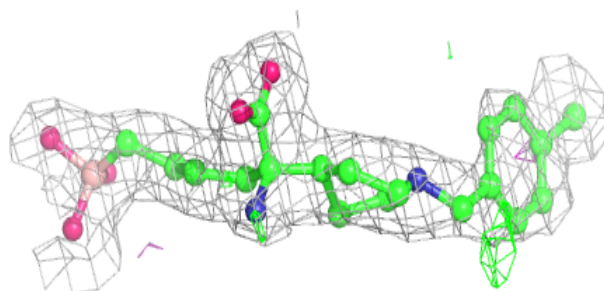
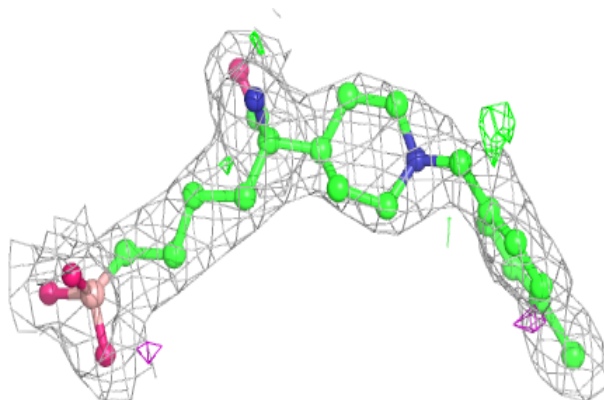
The following is a graphical depiction of the model fit to experimental electron density of all instances of the Ligand of Interest. In addition, ligands with molecular weight > 250 and outliers as shown on the geometry validation Tables will also be included. Each fit is shown from different orientation to approximate a three-dimensional view.

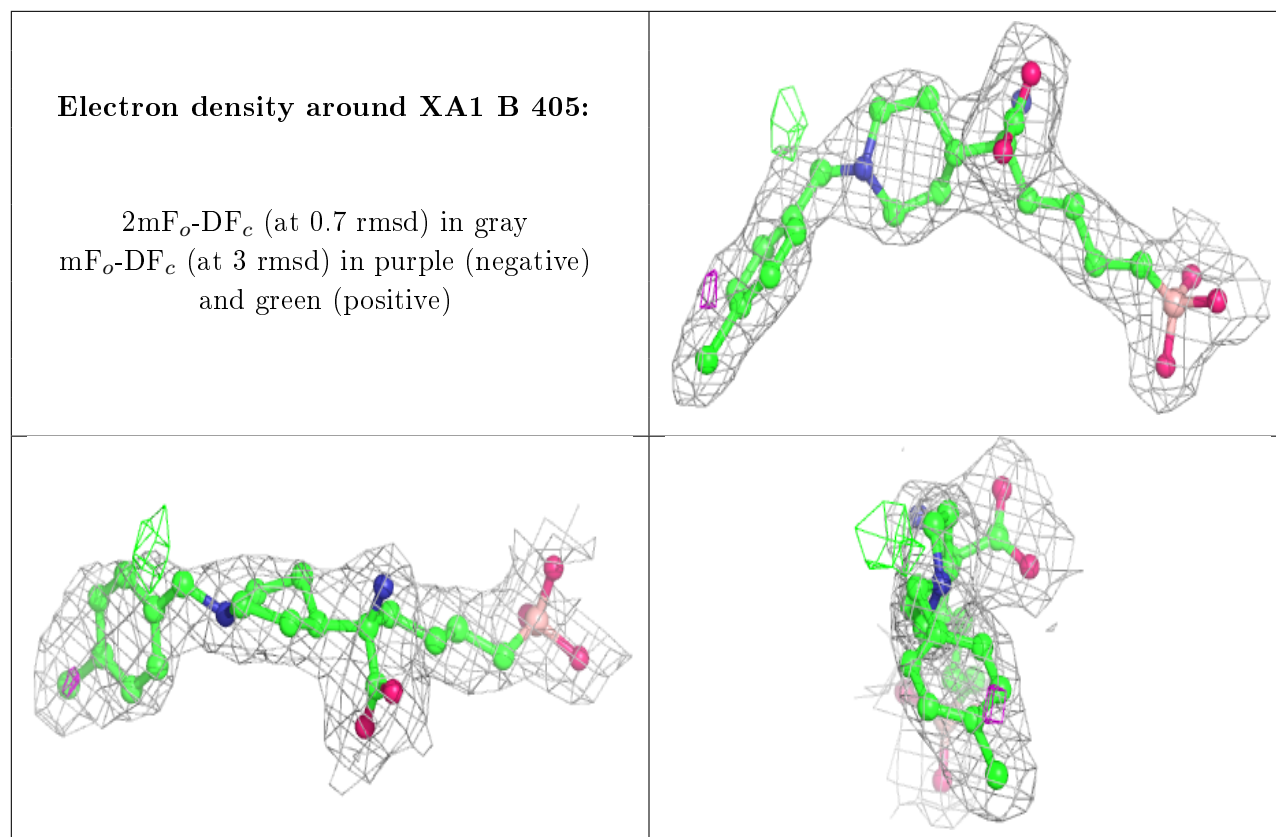
**Electron density around XA1 C 405:**

$2mF_o-DF_c$  (at 0.7 rmsd) in gray  
 $mF_o-DF_c$  (at 3 rmsd) in purple (negative)  
and green (positive)

**Electron density around XA1 A 405:**

$2mF_o-DF_c$  (at 0.7 rmsd) in gray  
 $mF_o-DF_c$  (at 3 rmsd) in purple (negative)  
and green (positive)





## 6.5 Other polymers [i](#)

There are no such residues in this entry.