



Full wwPDB X-ray Structure Validation Report ⓘ

May 22, 2020 – 01:23 am BST

PDB ID : 6IX5
Title : The structure of LepI complex with SAM and its substrate analogue
Authors : Cai, Y.; Ohashi, M.; Hai, Y.; Tang, Y.; Zhou, J.
Deposited on : 2018-12-09
Resolution : 1.70 Å(reported)

This is a Full wwPDB X-ray Structure Validation Report for a publicly released PDB entry.

We welcome your comments at validation@mail.wwpdb.org

A user guide is available at

<https://www.wwpdb.org/validation/2017/XrayValidationReportHelp>

with specific help available everywhere you see the ⓘ symbol.

The following versions of software and data (see [references ⓘ](#)) were used in the production of this report:

MolProbity : 4.02b-467
Mogul : 1.8.5 (274361), CSD as541be (2020)
Xtriage (Phenix) : 1.13
EDS : 2.11
buster-report : 1.1.7 (2018)
Percentile statistics : 20191225.v01 (using entries in the PDB archive December 25th 2019)
Refmac : 5.8.0158
CCP4 : 7.0.044 (Gargrove)
Ideal geometry (proteins) : Engh & Huber (2001)
Ideal geometry (DNA, RNA) : Parkinson et al. (1996)
Validation Pipeline (wwPDB-VP) : 2.11

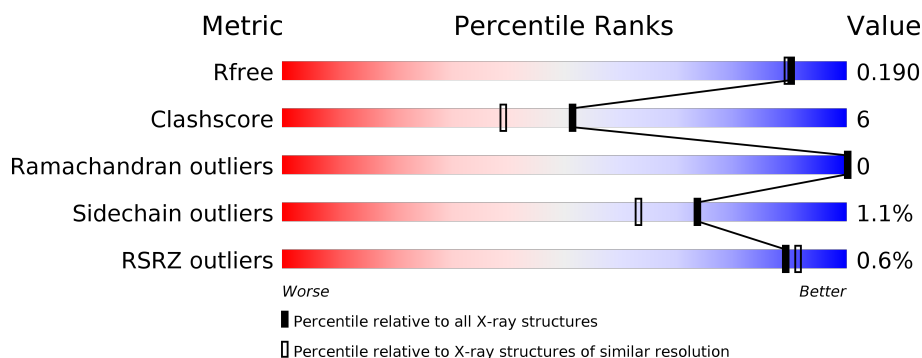
1 Overall quality at a glance ⓘ

The following experimental techniques were used to determine the structure:

X-RAY DIFFRACTION

The reported resolution of this entry is 1.70 Å.

Percentile scores (ranging between 0-100) for global validation metrics of the entry are shown in the following graphic. The table shows the number of entries on which the scores are based.



Metric	Whole archive (#Entries)	Similar resolution (#Entries, resolution range(Å))
R_{free}	130704	4298 (1.70-1.70)
Clashscore	141614	4695 (1.70-1.70)
Ramachandran outliers	138981	4610 (1.70-1.70)
Sidechain outliers	138945	4610 (1.70-1.70)
RSRZ outliers	127900	4222 (1.70-1.70)

The table below summarises the geometric issues observed across the polymeric chains and their fit to the electron density. The red, orange, yellow and green segments on the lower bar indicate the fraction of residues that contain outliers for ≥ 3 , 2, 1 and 0 types of geometric quality criteria respectively. A grey segment represents the fraction of residues that are not modelled. The numeric value for each fraction is indicated below the corresponding segment, with a dot representing fractions $\leq 5\%$. The upper red bar (where present) indicates the fraction of residues that have poor fit to the electron density. The numeric value is given above the bar.

Mol	Chain	Length	Quality of chain
1	A	405	
1	B	405	

The following table lists non-polymeric compounds, carbohydrate monomers and non-standard residues in protein, DNA, RNA chains that are outliers for geometric or electron-density-fit criteria:

Mol	Type	Chain	Res	Chirality	Geometry	Clashes	Electron density
4	EDO	B	407	-	-	X	-
4	EDO	B	409	-	-	X	-

2 Entry composition

There are 9 unique types of molecules in this entry. The entry contains 7501 atoms, of which 0 are hydrogens and 0 are deuteriums.

In the tables below, the ZeroOcc column contains the number of atoms modelled with zero occupancy, the AltConf column contains the number of residues with at least one atom in alternate conformation and the Trace column contains the number of residues modelled with at most 2 atoms.

- Molecule 1 is a protein called O-methyltransferase lepl.

Mol	Chain	Residues	Atoms					ZeroOcc	AltConf	Trace
1	A	389	Total	C	N	O	S	0	25	0
			3210	2047	552	590	21			
1	B	389	Total	C	N	O	S	0	14	0
			3145	1997	542	585	21			

There are 38 discrepancies between the modelled and reference sequences:

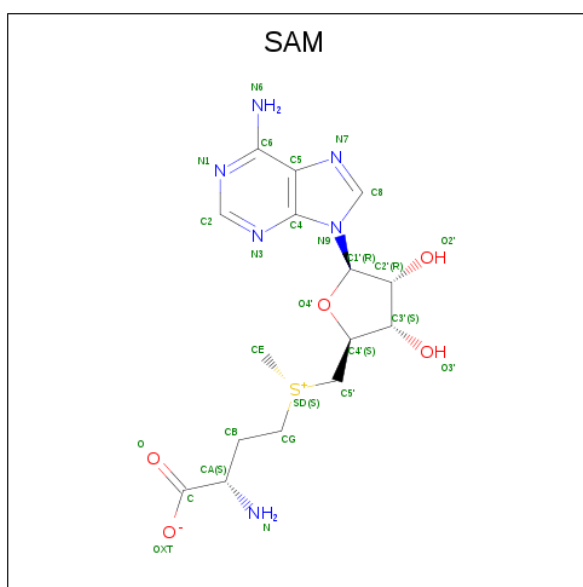
Chain	Residue	Modelled	Actual	Comment	Reference
A	-17	MET	-	initiating methionine	UNP B8NJH3
A	-16	GLY	-	expression tag	UNP B8NJH3
A	-15	SER	-	expression tag	UNP B8NJH3
A	-14	SER	-	expression tag	UNP B8NJH3
A	-13	HIS	-	expression tag	UNP B8NJH3
A	-12	HIS	-	expression tag	UNP B8NJH3
A	-11	HIS	-	expression tag	UNP B8NJH3
A	-10	HIS	-	expression tag	UNP B8NJH3
A	-9	HIS	-	expression tag	UNP B8NJH3
A	-8	HIS	-	expression tag	UNP B8NJH3
A	-7	GLU	-	expression tag	UNP B8NJH3
A	-6	ASN	-	expression tag	UNP B8NJH3
A	-5	LEU	-	expression tag	UNP B8NJH3
A	-4	TYR	-	expression tag	UNP B8NJH3
A	-3	PHE	-	expression tag	UNP B8NJH3
A	-2	GLN	-	expression tag	UNP B8NJH3
A	-1	SER	-	expression tag	UNP B8NJH3
A	0	ASN	-	expression tag	UNP B8NJH3
A	1	ALA	-	expression tag	UNP B8NJH3
B	-17	MET	-	initiating methionine	UNP B8NJH3
B	-16	GLY	-	expression tag	UNP B8NJH3
B	-15	SER	-	expression tag	UNP B8NJH3
B	-14	SER	-	expression tag	UNP B8NJH3
B	-13	HIS	-	expression tag	UNP B8NJH3
B	-12	HIS	-	expression tag	UNP B8NJH3

Continued on next page...

Continued from previous page...

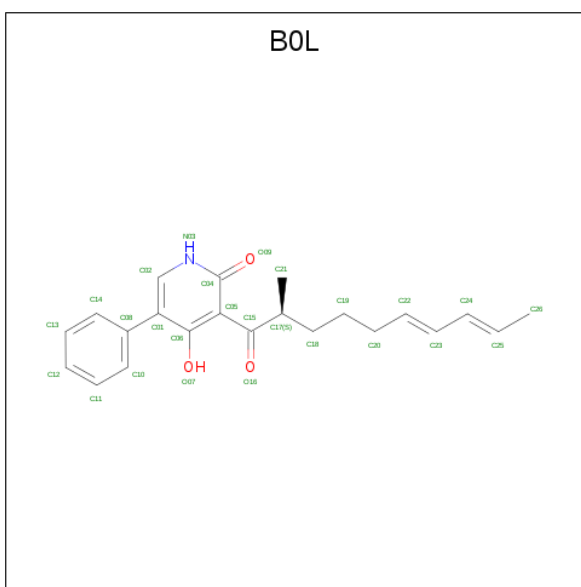
Chain	Residue	Modelled	Actual	Comment	Reference
B	-11	HIS	-	expression tag	UNP B8N JH3
B	-10	HIS	-	expression tag	UNP B8N JH3
B	-9	HIS	-	expression tag	UNP B8N JH3
B	-8	HIS	-	expression tag	UNP B8N JH3
B	-7	GLU	-	expression tag	UNP B8N JH3
B	-6	ASN	-	expression tag	UNP B8N JH3
B	-5	LEU	-	expression tag	UNP B8N JH3
B	-4	TYR	-	expression tag	UNP B8N JH3
B	-3	PHE	-	expression tag	UNP B8N JH3
B	-2	GLN	-	expression tag	UNP B8N JH3
B	-1	SER	-	expression tag	UNP B8N JH3
B	0	ASN	-	expression tag	UNP B8N JH3
B	1	ALA	-	expression tag	UNP B8N JH3

- Molecule 2 is S-ADENOSYLMETHIONINE (three-letter code: SAM) (formula: $C_{15}H_{22}N_6O_5S$).



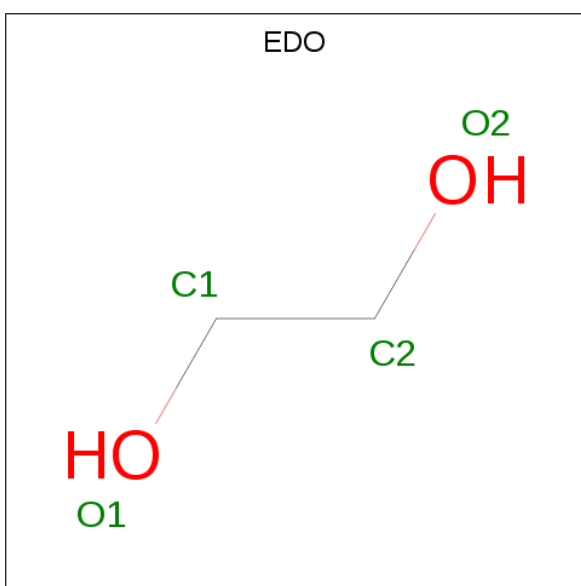
Mol	Chain	Residues	Atoms					ZeroOcc	AltConf
2	A	1	Total	C	N	O	S	0	0
			27	15	6	5	1		
2	B	1	Total	C	N	O	S	0	0
			27	15	6	5	1		

- Molecule 3 is 4-hydroxy-3-[(2S,6E,8E)-2-methyldeca-6,8-dienoyl]-5-phenylpyridin-2(1H)-one (three-letter code: B0L) (formula: $C_{22}H_{25}NO_3$).



Mol	Chain	Residues	Atoms				ZeroOcc	AltConf
3	A	1	Total	C	N	O	0	0
			26	22	1	3		
3	B	1	Total	C	N	O	0	1
			52	44	2	6		

- Molecule 4 is 1,2-ETHANEDIOL (three-letter code: EDO) (formula: C₂H₆O₂).



Mol	Chain	Residues	Atoms			ZeroOcc	AltConf
4	A	1	Total	C	O	0	0
			4	2	2		
4	A	1	Total	C	O	0	0
			4	2	2		

Continued on next page...

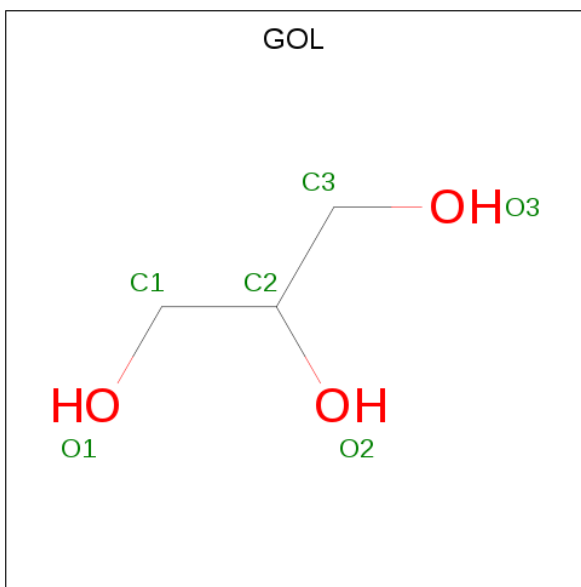
Continued from previous page...

Mol	Chain	Residues	Atoms	ZeroOcc	AltConf
4	A	1	Total C O 4 2 2	0	0
4	A	1	Total C O 4 2 2	0	0
4	A	1	Total C O 4 2 2	0	0
4	A	1	Total C O 4 2 2	0	0
4	A	1	Total C O 4 2 2	0	0
4	A	1	Total C O 4 2 2	0	0
4	A	1	Total C O 4 2 2	0	0
4	B	1	Total C O 4 2 2	0	0
4	B	1	Total C O 4 2 2	0	0
4	B	1	Total C O 4 2 2	0	0
4	B	1	Total C O 4 2 2	0	0
4	B	1	Total C O 4 2 2	0	0
4	B	1	Total C O 4 2 2	0	0
4	B	1	Total C O 4 2 2	0	0

- Molecule 5 is CHLORIDE ION (three-letter code: CL) (formula: Cl).

Mol	Chain	Residues	Atoms	ZeroOcc	AltConf
5	B	3	Total Cl 3 3	0	0
5	A	5	Total Cl 5 5	0	0

- Molecule 6 is GLYCEROL (three-letter code: GOL) (formula: C₃H₈O₃).

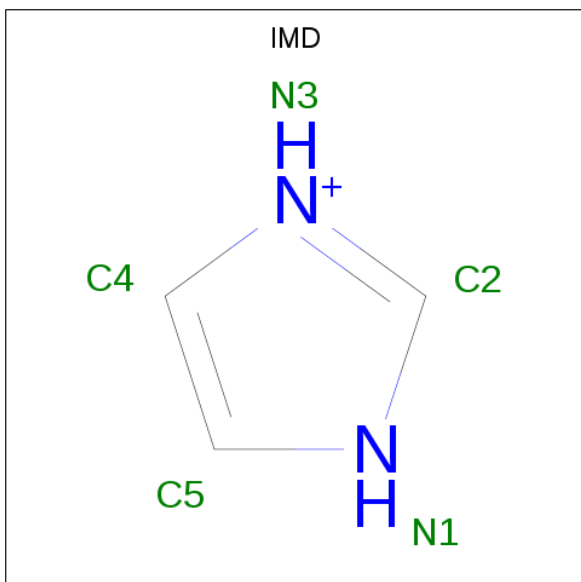


Mol	Chain	Residues	Atoms			ZeroOcc	AltConf
6	A	1	Total	C	O	0	0
			6	3	3		

- Molecule 7 is SODIUM ION (three-letter code: NA) (formula: Na).

Mol	Chain	Residues	Atoms		ZeroOcc	AltConf
7	B	1	Total	Na	0	0
			1	1		
7	A	1	Total	Na	0	0
			1	1		

- Molecule 8 is IMIDAZOLE (three-letter code: IMD) (formula: C₃H₅N₂).



Mol	Chain	Residues	Atoms			ZeroOcc	AltConf
8	A	1	Total	C	N	0	0
			5	3	2		

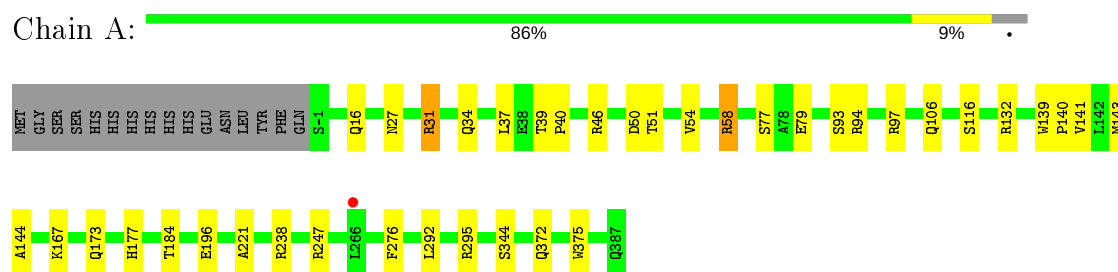
- Molecule 9 is water.

Mol	Chain	Residues	Atoms		ZeroOcc	AltConf
9	A	485	Total	O	0	1
			486	486		
9	B	442	Total	O	0	1
			443	443		

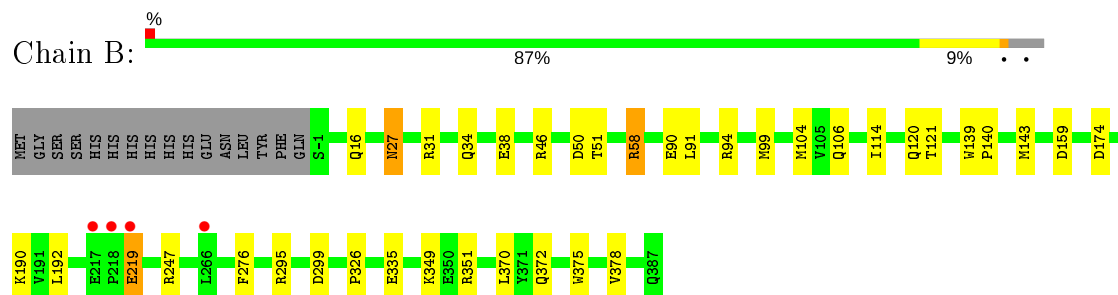
3 Residue-property plots [i](#)

These plots are drawn for all protein, RNA and DNA chains in the entry. The first graphic for a chain summarises the proportions of the various outlier classes displayed in the second graphic. The second graphic shows the sequence view annotated by issues in geometry and electron density. Residues are color-coded according to the number of geometric quality criteria for which they contain at least one outlier: green = 0, yellow = 1, orange = 2 and red = 3 or more. A red dot above a residue indicates a poor fit to the electron density ($RSRZ > 2$). Stretches of 2 or more consecutive residues without any outlier are shown as a green connector. Residues present in the sample, but not in the model, are shown in grey.

• Molecule 1: O-methyltransferase lepI



• Molecule 1: O-methyltransferase lepI



4 Data and refinement statistics

Property	Value	Source
Space group	C 1 2 1	Depositor
Cell constants a, b, c, α , β , γ	161.05Å 62.24Å 114.15Å 90.00° 113.15° 90.00°	Depositor
Resolution (Å)	34.99 – 1.70 34.99 – 1.70	Depositor EDS
% Data completeness (in resolution range)	97.5 (34.99-1.70) 97.5 (34.99-1.70)	Depositor EDS
R_{merge}	0.06	Depositor
R_{sym}	(Not available)	Depositor
$\langle I/\sigma(I) \rangle$ ¹	2.64 (at 1.70Å)	Xtriage
Refinement program	PHENIX v1.12_2829	Depositor
R, R_{free}	0.163 , 0.189 0.164 , 0.190	Depositor DCC
R_{free} test set	5579 reflections (4.99%)	wwPDB-VP
Wilson B-factor (Å ²)	13.5	Xtriage
Anisotropy	0.120	Xtriage
Bulk solvent k_{sol} (e/Å ³), B_{sol} (Å ²)	0.36 , 52.8	EDS
L-test for twinning ²	$\langle L \rangle = 0.49$, $\langle L^2 \rangle = 0.32$	Xtriage
Estimated twinning fraction	No twinning to report.	Xtriage
F_o, F_c correlation	0.96	EDS
Total number of atoms	7501	wwPDB-VP
Average B, all atoms (Å ²)	18.0	wwPDB-VP

Xtriage's analysis on translational NCS is as follows: *The largest off-origin peak in the Patterson function is 5.70% of the height of the origin peak. No significant pseudotranslation is detected.*

¹Intensities estimated from amplitudes.

²Theoretical values of $\langle |L| \rangle$, $\langle L^2 \rangle$ for acentric reflections are 0.5, 0.333 respectively for untwinned datasets, and 0.375, 0.2 for perfectly twinned datasets.

5 Model quality

5.1 Standard geometry

Bond lengths and bond angles in the following residue types are not validated in this section: GOL, IMD, SAM, CL, NA, EDO, BOL

The Z score for a bond length (or angle) is the number of standard deviations the observed value is removed from the expected value. A bond length (or angle) with $|Z| > 5$ is considered an outlier worth inspection. RMSZ is the root-mean-square of all Z scores of the bond lengths (or angles).

Mol	Chain	Bond lengths		Bond angles	
		RMSZ	$\# Z > 5$	RMSZ	$\# Z > 5$
1	A	0.69	0/3349	0.75	5/4544 (0.1%)
1	B	0.69	1/3250 (0.0%)	0.72	6/4410 (0.1%)
All	All	0.69	1/6599 (0.0%)	0.73	11/8954 (0.1%)

All (1) bond length outliers are listed below:

Mol	Chain	Res	Type	Atoms	Z	Observed(Å)	Ideal(Å)
1	B	335	GLU	CG-CD	5.65	1.60	1.51

All (11) bond angle outliers are listed below:

Mol	Chain	Res	Type	Atoms	Z	Observed(°)	Ideal(°)
1	B	50	ASP	CB-CG-OD1	7.53	125.08	118.30
1	A	50	ASP	CB-CG-OD1	6.62	124.26	118.30
1	A	46	ARG	NE-CZ-NH2	-6.37	117.11	120.30
1	B	159	ASP	CB-CG-OD1	6.05	123.75	118.30
1	A	238	ARG	NE-CZ-NH1	5.84	123.22	120.30
1	B	58[A]	ARG	NE-CZ-NH1	-5.42	117.59	120.30
1	B	58[B]	ARG	NE-CZ-NH1	-5.42	117.59	120.30
1	B	174	ASP	CB-CG-OD1	5.41	123.17	118.30
1	A	132	ARG	NE-CZ-NH2	-5.34	117.63	120.30
1	A	238	ARG	NE-CZ-NH2	-5.34	117.63	120.30
1	B	46	ARG	NE-CZ-NH2	-5.34	117.63	120.30

There are no chirality outliers.

There are no planarity outliers.

5.2 Too-close contacts ⓘ

In the following table, the Non-H and H(model) columns list the number of non-hydrogen atoms and hydrogen atoms in the chain respectively. The H(added) column lists the number of hydrogen atoms added and optimized by MolProbity. The Clashes column lists the number of clashes within the asymmetric unit, whereas Symm-Clashes lists symmetry related clashes.

Mol	Chain	Non-H	H(model)	H(added)	Clashes	Symm-Clashes
1	A	3210	0	3251	37	0
1	B	3145	0	3147	43	0
2	A	27	0	22	0	0
2	B	27	0	22	0	0
3	A	26	0	0	2	0
3	B	52	0	0	1	0
4	A	36	0	54	6	0
4	B	28	0	41	17	0
5	A	5	0	0	0	0
5	B	3	0	0	0	0
6	A	6	0	8	1	0
7	A	1	0	0	0	0
7	B	1	0	0	0	0
8	A	5	0	5	0	0
9	A	486	0	0	9	0
9	B	443	0	0	2	0
All	All	7501	0	6550	74	0

The all-atom clashscore is defined as the number of clashes found per 1000 atoms (including hydrogen atoms). The all-atom clashscore for this structure is 6.

All (74) close contacts within the same asymmetric unit are listed below, sorted by their clash magnitude.

Atom-1	Atom-2	Interatomic distance (Å)	Clash overlap (Å)
1:B:299:ASP:H	4:B:407:EDO:H22	1.34	0.91
1:B:372[B]:GLN:NE2	1:B:378:VAL:HG22	1.88	0.88
3:A:402:B0L:C22	9:A:576:HOH:O	2.22	0.88
1:B:219:GLU:HG3	1:B:247:ARG:HD2	1.57	0.87
1:A:143[B]:MET:HG2	1:B:139[B]:TRP:CE3	2.20	0.77
1:A:139[A]:TRP:CE3	1:B:143[A]:MET:HG2	2.21	0.76
1:A:40:PRO:HG3	4:B:409:EDO:H11	1.68	0.75
1:A:40:PRO:CG	4:B:409:EDO:H11	2.19	0.73
1:B:349:LYS:HD2	4:B:407:EDO:H12	1.68	0.73
1:A:54[B]:VAL:HG22	9:A:763:HOH:O	1.88	0.72
1:B:51:THR:HG23	1:B:139[A]:TRP:CZ2	2.26	0.70

Continued on next page...

Continued from previous page...

Atom-1	Atom-2	Interatomic distance (Å)	Clash overlap (Å)
1:A:143[B]:MET:HG2	1:B:139[B]:TRP:HE3	1.55	0.69
1:A:27:ASN:ND2	1:B:38[B]:GLU:HG3	2.09	0.68
1:A:51:THR:HG23	1:A:139[B]:TRP:CZ2	2.31	0.66
1:A:139[A]:TRP:HE3	1:B:143[A]:MET:HG2	1.57	0.66
3:A:402:B0L:C20	9:A:576:HOH:O	2.40	0.66
1:B:375:TRP:O	4:B:406:EDO:H21	1.97	0.64
1:B:372[B]:GLN:HE22	1:B:378:VAL:HG22	1.63	0.62
1:B:299:ASP:H	4:B:407:EDO:C2	2.10	0.61
1:B:121:THR:OG1	4:B:409:EDO:H21	2.01	0.60
1:B:121:THR:N	4:B:409:EDO:H21	2.16	0.60
1:B:372[B]:GLN:NE2	1:B:375:TRP:CD1	2.70	0.60
1:A:34[B]:GLN:OE1	1:B:31:ARG:HG2	2.03	0.59
1:B:16:GLN:HG3	9:B:529:HOH:O	2.03	0.58
1:A:54[A]:VAL:HG23	9:A:763:HOH:O	2.04	0.57
1:B:121:THR:HA	4:B:409:EDO:H12	1.88	0.55
1:A:79:GLU:H	1:A:79:GLU:CD	2.09	0.55
1:B:120:GLN:HB2	4:B:409:EDO:H22	1.89	0.55
1:A:27:ASN:HD22	1:B:38[B]:GLU:HG3	1.71	0.54
1:A:173:GLN:OE1	1:A:177[A]:HIS:ND1	2.37	0.54
1:A:94:ARG:NH1	4:A:403:EDO:H22	2.23	0.54
1:A:144:ALA:HB1	1:A:167[B]:LYS:HD3	1.89	0.53
1:A:58[A]:ARG:NH1	9:A:507:HOH:O	2.42	0.53
1:B:51:THR:HG23	1:B:139[A]:TRP:HZ2	1.74	0.52
1:A:39:THR:HA	6:A:417:GOL:H11	1.91	0.52
1:A:140:PRO:HA	1:A:143[B]:MET:HE3	1.92	0.52
1:B:299:ASP:N	4:B:407:EDO:H22	2.15	0.52
1:A:141[A]:VAL:HG12	1:A:344:SER:HB3	1.93	0.50
1:A:54[A]:VAL:HB	1:A:139[A]:TRP:CZ2	2.46	0.50
1:A:31[A]:ARG:HG3	1:B:34[A]:GLN:HE22	1.75	0.50
1:B:372[B]:GLN:HG3	1:B:378:VAL:HG13	1.94	0.49
1:A:184:THR:HG23	9:A:757:HOH:O	2.12	0.49
1:B:120:GLN:HG3	4:B:404:EDO:H12	1.95	0.49
1:A:184:THR:HG22	9:A:743:HOH:O	2.13	0.49
1:A:196:GLU:HB3	4:A:407:EDO:H11	1.95	0.47
1:A:16:GLN:HG3	9:A:509:HOH:O	2.14	0.47
1:A:140:PRO:HA	1:A:143[B]:MET:CE	2.44	0.47
1:A:141[A]:VAL:CG1	1:A:344:SER:HB3	2.45	0.47
4:A:405:EDO:H12	1:B:94:ARG:HH11	1.79	0.46
1:B:120:GLN:CB	4:B:409:EDO:H22	2.45	0.46
1:A:292:LEU:HD22	1:A:295[B]:ARG:CZ	2.46	0.46
1:A:37:LEU:HB2	1:B:27:ASN:HD21	1.82	0.45

Continued on next page...

Continued from previous page...

Atom-1	Atom-2	Interatomic distance (Å)	Clash overlap (Å)
1:B:349:LYS:HD2	4:B:407:EDO:C1	2.44	0.44
1:A:221:ALA:HA	1:A:247:ARG:HB2	1.98	0.44
1:A:106:GLN:HG3	1:A:116:SER:HB3	2.00	0.44
1:B:326:PRO:HD2	1:B:351:ARG:O	2.18	0.43
1:A:51:THR:CG2	1:A:139[B]:TRP:CZ2	3.00	0.43
1:B:192:LEU:HD21	4:B:408:EDO:H22	2.01	0.43
1:A:77:SER:HB2	1:A:79:GLU:OE1	2.19	0.42
4:A:405:EDO:H11	1:B:91:LEU:HA	2.01	0.42
1:B:190:LYS:HD2	4:B:405:EDO:H22	2.01	0.42
1:B:375:TRP:C	4:B:406:EDO:H21	2.39	0.42
1:B:295[A]:ARG:CZ	3:B:402[A]:B0L:O09	2.68	0.42
4:A:408:EDO:H21	9:A:871:HOH:O	2.19	0.41
1:A:93:SER:O	1:A:97[A]:ARG:HG3	2.20	0.41
1:B:370:LEU:HD23	1:B:370:LEU:C	2.41	0.41
1:B:106:GLN:HB2	1:B:114:ILE:HG13	2.01	0.41
1:B:99:MET:HB3	1:B:104[A]:MET:HB3	2.03	0.41
1:A:372[B]:GLN:NE2	1:A:375:TRP:CD1	2.88	0.41
1:B:378:VAL:HG23	9:B:552:HOH:O	2.21	0.41
4:A:405:EDO:H22	1:B:90:GLU:HB3	2.02	0.41
1:B:139[B]:TRP:HB2	1:B:140:PRO:HD3	2.03	0.40

There are no symmetry-related clashes.

5.3 Torsion angles ⓘ

5.3.1 Protein backbone ⓘ

In the following table, the Percentiles column shows the percent Ramachandran outliers of the chain as a percentile score with respect to all X-ray entries followed by that with respect to entries of similar resolution.

The Analysed column shows the number of residues for which the backbone conformation was analysed, and the total number of residues.

Mol	Chain	Analysed	Favoured	Allowed	Outliers	Percentiles	
1	A	412/405 (102%)	402 (98%)	10 (2%)	0	100	100
1	B	401/405 (99%)	395 (98%)	6 (2%)	0	100	100
All	All	813/810 (100%)	797 (98%)	16 (2%)	0	100	100

There are no Ramachandran outliers to report.

5.3.2 Protein sidechains ⓘ

In the following table, the Percentiles column shows the percent sidechain outliers of the chain as a percentile score with respect to all X-ray entries followed by that with respect to entries of similar resolution.

The Analysed column shows the number of residues for which the sidechain conformation was analysed, and the total number of residues.

Mol	Chain	Analysed	Rotameric	Outliers	Percentiles	
1	A	353/343 (103%)	348 (99%)	5 (1%)	67	53
1	B	342/343 (100%)	337 (98%)	5 (2%)	65	51
All	All	695/686 (101%)	685 (99%)	10 (1%)	73	53

All (10) residues with a non-rotameric sidechain are listed below:

Mol	Chain	Res	Type
1	A	31[A]	ARG
1	A	31[B]	ARG
1	A	58[A]	ARG
1	A	58[B]	ARG
1	A	276	PHE
1	B	27	ASN
1	B	58[A]	ARG
1	B	58[B]	ARG
1	B	219	GLU
1	B	276	PHE

Some sidechains can be flipped to improve hydrogen bonding and reduce clashes. All (1) such sidechains are listed below:

Mol	Chain	Res	Type
1	B	27	ASN

5.3.3 RNA ⓘ

There are no RNA molecules in this entry.

5.4 Non-standard residues in protein, DNA, RNA chains ⓘ

There are no non-standard protein/DNA/RNA residues in this entry.

5.5 Carbohydrates ⓘ

There are no carbohydrates in this entry.

5.6 Ligand geometry ⓘ

Of 33 ligands modelled in this entry, 10 are monoatomic - leaving 23 for Mogul analysis.

In the following table, the Counts columns list the number of bonds (or angles) for which Mogul statistics could be retrieved, the number of bonds (or angles) that are observed in the model and the number of bonds (or angles) that are defined in the Chemical Component Dictionary. The Link column lists molecule types, if any, to which the group is linked. The Z score for a bond length (or angle) is the number of standard deviations the observed value is removed from the expected value. A bond length (or angle) with $|Z| > 2$ is considered an outlier worth inspection. RMSZ is the root-mean-square of all Z scores of the bond lengths (or angles).

Mol	Type	Chain	Res	Link	Bond lengths			Bond angles		
					Counts	RMSZ	$\# Z > 2$	Counts	RMSZ	$\# Z > 2$
4	EDO	A	410	-	3,3,3	0.60	0	2,2,2	0.33	0
4	EDO	B	409	-	3,3,3	0.89	0	2,2,2	0.29	0
4	EDO	A	406	-	3,3,3	0.33	0	2,2,2	1.21	0
4	EDO	A	404	-	3,3,3	0.50	0	2,2,2	0.12	0
4	EDO	B	403	-	3,3,3	0.53	0	2,2,2	0.21	0
4	EDO	A	405	-	3,3,3	0.36	0	2,2,2	0.10	0
8	IMD	A	419	-	3,5,5	0.40	0	4,5,5	0.59	0
4	EDO	A	409	-	3,3,3	0.37	0	2,2,2	0.80	0
4	EDO	A	403	-	3,3,3	0.28	0	2,2,2	0.44	0
3	B0L	B	402[B]	-	25,27,27	1.54	5 (20%)	27,35,35	1.70	10 (37%)
3	B0L	B	402[A]	-	25,27,27	1.49	5 (20%)	27,35,35	1.47	7 (25%)
4	EDO	B	404	-	3,3,3	0.34	0	2,2,2	0.72	0
6	GOL	A	417	-	5,5,5	0.28	0	5,5,5	0.44	0
4	EDO	A	411	-	3,3,3	0.46	0	2,2,2	0.10	0
4	EDO	B	406	-	3,3,3	0.49	0	2,2,2	0.74	0
2	SAM	A	401	-	21,29,29	1.08	2 (9%)	18,42,42	1.59	3 (16%)
4	EDO	A	407	-	3,3,3	0.41	0	2,2,2	0.75	0
3	B0L	A	402	-	25,27,27	1.69	6 (24%)	27,35,35	2.04	10 (37%)
4	EDO	A	408	-	3,3,3	0.43	0	2,2,2	0.41	0
2	SAM	B	401	-	21,29,29	1.29	2 (9%)	18,42,42	1.71	4 (22%)
4	EDO	B	407	-	3,3,3	0.48	0	2,2,2	0.13	0
4	EDO	B	408	-	3,3,3	0.62	0	2,2,2	0.47	0
4	EDO	B	405	-	3,3,3	0.28	0	2,2,2	0.78	0

In the following table, the Chirals column lists the number of chiral outliers, the number of chiral centers analysed, the number of these observed in the model and the number defined in the

Chemical Component Dictionary. Similar counts are reported in the Torsion and Rings columns.
'-' means no outliers of that kind were identified.

Mol	Type	Chain	Res	Link	Chirals	Torsions	Rings
4	EDO	A	410	-	-	1/1/1/1	-
4	EDO	B	409	-	-	1/1/1/1	-
4	EDO	A	406	-	-	1/1/1/1	-
4	EDO	A	404	-	-	0/1/1/1	-
4	EDO	B	403	-	-	1/1/1/1	-
4	EDO	A	405	-	-	1/1/1/1	-
8	IMD	A	419	-	-	-	0/1/1/1
4	EDO	A	409	-	-	1/1/1/1	-
4	EDO	A	403	-	-	1/1/1/1	-
3	B0L	B	402[B]	-	-	3/20/20/20	0/2/2/2
3	B0L	B	402[A]	-	-	4/20/20/20	0/2/2/2
4	EDO	B	404	-	-	0/1/1/1	-
6	GOL	A	417	-	-	0/4/4/4	-
4	EDO	A	411	-	-	1/1/1/1	-
4	EDO	B	406	-	-	1/1/1/1	-
2	SAM	A	401	-	-	3/8/33/33	0/3/3/3
4	EDO	A	407	-	-	1/1/1/1	-
3	B0L	A	402	-	-	3/20/20/20	0/2/2/2
4	EDO	A	408	-	-	1/1/1/1	-
2	SAM	B	401	-	-	4/8/33/33	0/3/3/3
4	EDO	B	407	-	-	0/1/1/1	-
4	EDO	B	408	-	-	1/1/1/1	-
4	EDO	B	405	-	-	1/1/1/1	-

All (20) bond length outliers are listed below:

Mol	Chain	Res	Type	Atoms	Z	Observed(Å)	Ideal(Å)
2	B	401	SAM	C2-N3	4.53	1.39	1.32
3	A	402	B0L	O16-C15	-4.18	1.16	1.22
3	B	402[B]	B0L	O16-C15	-4.00	1.16	1.22
3	B	402[A]	B0L	O16-C15	-3.83	1.16	1.22
3	A	402	B0L	O09-C04	-3.30	1.16	1.24
3	B	402[B]	B0L	O09-C04	-3.09	1.16	1.24
3	A	402	B0L	C01-C06	-3.04	1.35	1.40
3	B	402[A]	B0L	O09-C04	-3.01	1.17	1.24
2	A	401	SAM	C2-N3	3.00	1.36	1.32
3	B	402[B]	B0L	C24-C23	2.77	1.52	1.44
3	B	402[A]	B0L	C01-C06	-2.59	1.36	1.40
3	B	402[A]	B0L	C24-C23	2.59	1.51	1.44
3	B	402[B]	B0L	C01-C06	-2.57	1.36	1.40

Continued on next page...

Continued from previous page...

Mol	Chain	Res	Type	Atoms	Z	Observed(Å)	Ideal(Å)
2	B	401	SAM	C2-N1	2.55	1.38	1.33
3	A	402	B0L	C24-C23	2.37	1.51	1.44
3	B	402[B]	B0L	C01-C08	2.28	1.53	1.49
3	B	402[A]	B0L	C01-C08	2.27	1.53	1.49
2	A	401	SAM	O4'-C1'	2.16	1.44	1.41
3	A	402	B0L	C01-C08	2.12	1.53	1.49
3	A	402	B0L	C10-C08	-2.02	1.35	1.39

All (34) bond angle outliers are listed below:

Mol	Chain	Res	Type	Atoms	Z	Observed(°)	Ideal(°)
2	B	401	SAM	N3-C2-N1	-4.54	121.58	128.68
2	A	401	SAM	N3-C2-N1	-4.40	121.80	128.68
3	A	402	B0L	C26-C25-C24	-3.84	115.91	125.55
3	A	402	B0L	C18-C19-C20	-3.76	106.32	114.49
3	A	402	B0L	O16-C15-C05	3.65	124.89	119.87
3	B	402[A]	B0L	C26-C25-C24	-3.38	117.05	125.55
3	A	402	B0L	C19-C18-C17	-3.09	108.49	114.82
3	B	402[B]	B0L	C19-C18-C17	-2.96	108.76	114.82
2	B	401	SAM	C1'-N9-C4	-2.85	121.64	126.64
3	B	402[B]	B0L	C24-C23-C22	-2.80	109.39	125.51
3	A	402	B0L	C01-C02-N03	-2.80	120.09	124.49
3	A	402	B0L	C06-C05-C15	2.74	125.88	119.01
3	B	402[B]	B0L	C19-C20-C22	-2.70	96.93	112.43
3	A	402	B0L	C02-N03-C04	2.63	122.99	116.27
3	A	402	B0L	C21-C17-C18	-2.58	104.81	111.33
3	B	402[B]	B0L	C06-C05-C15	2.48	125.23	119.01
3	B	402[A]	B0L	C06-C05-C15	2.48	125.22	119.01
3	B	402[A]	B0L	C20-C22-C23	-2.41	114.14	125.90
3	B	402[B]	B0L	O16-C15-C05	2.41	123.18	119.87
3	B	402[A]	B0L	O16-C15-C05	2.37	123.13	119.87
3	B	402[A]	B0L	C01-C02-N03	-2.35	120.79	124.49
3	B	402[B]	B0L	C02-N03-C04	2.34	122.24	116.27
3	B	402[A]	B0L	C02-N03-C04	2.31	122.16	116.27
3	B	402[B]	B0L	C23-C24-C25	-2.29	120.36	124.69
3	B	402[B]	B0L	C01-C02-N03	-2.29	120.89	124.49
2	B	401	SAM	C2-N1-C6	2.23	122.57	118.75
3	B	402[B]	B0L	C18-C19-C20	2.21	119.31	114.49
3	B	402[B]	B0L	C26-C25-C24	-2.18	120.06	125.55
3	A	402	B0L	C21-C17-C15	-2.14	103.75	108.87
2	B	401	SAM	N6-C6-N1	2.12	122.98	118.57
2	A	401	SAM	C1'-N9-C4	-2.11	122.93	126.64

Continued on next page...

Continued from previous page...

Mol	Chain	Res	Type	Atoms	Z	Observed(°)	Ideal(°)
3	A	402	B0L	C12-C13-C14	-2.11	116.98	120.19
3	B	402[A]	B0L	C21-C17-C15	-2.04	103.99	108.87
2	A	401	SAM	O2'-C2'-C3'	2.04	118.41	111.82

There are no chirality outliers.

All (30) torsion outliers are listed below:

Mol	Chain	Res	Type	Atoms
2	A	401	SAM	N-CA-CB-CG
2	A	401	SAM	C-CA-CB-CG
3	B	402[A]	B0L	C22-C23-C24-C25
3	B	402[A]	B0L	C19-C20-C22-C23
4	B	403	EDO	O1-C1-C2-O2
4	A	405	EDO	O1-C1-C2-O2
4	A	409	EDO	O1-C1-C2-O2
4	A	407	EDO	O1-C1-C2-O2
4	A	403	EDO	O1-C1-C2-O2
4	A	410	EDO	O1-C1-C2-O2
3	B	402[B]	B0L	O16-C15-C17-C18
3	B	402[A]	B0L	O16-C15-C17-C18
3	A	402	B0L	O16-C15-C17-C18
4	B	406	EDO	O1-C1-C2-O2
3	A	402	B0L	C19-C20-C22-C23
2	B	401	SAM	CB-CG-SD-C5'
4	B	409	EDO	O1-C1-C2-O2
3	B	402[B]	B0L	C19-C20-C22-C23
3	B	402[B]	B0L	C05-C15-C17-C18
3	B	402[A]	B0L	C05-C15-C17-C18
3	A	402	B0L	C05-C15-C17-C18
4	A	408	EDO	O1-C1-C2-O2
4	B	408	EDO	O1-C1-C2-O2
2	B	401	SAM	N-CA-CB-CG
2	B	401	SAM	C-CA-CB-CG
4	A	406	EDO	O1-C1-C2-O2
4	A	411	EDO	O1-C1-C2-O2
4	B	405	EDO	O1-C1-C2-O2
2	B	401	SAM	CB-CG-SD-CE
2	A	401	SAM	C4'-C5'-SD-CG

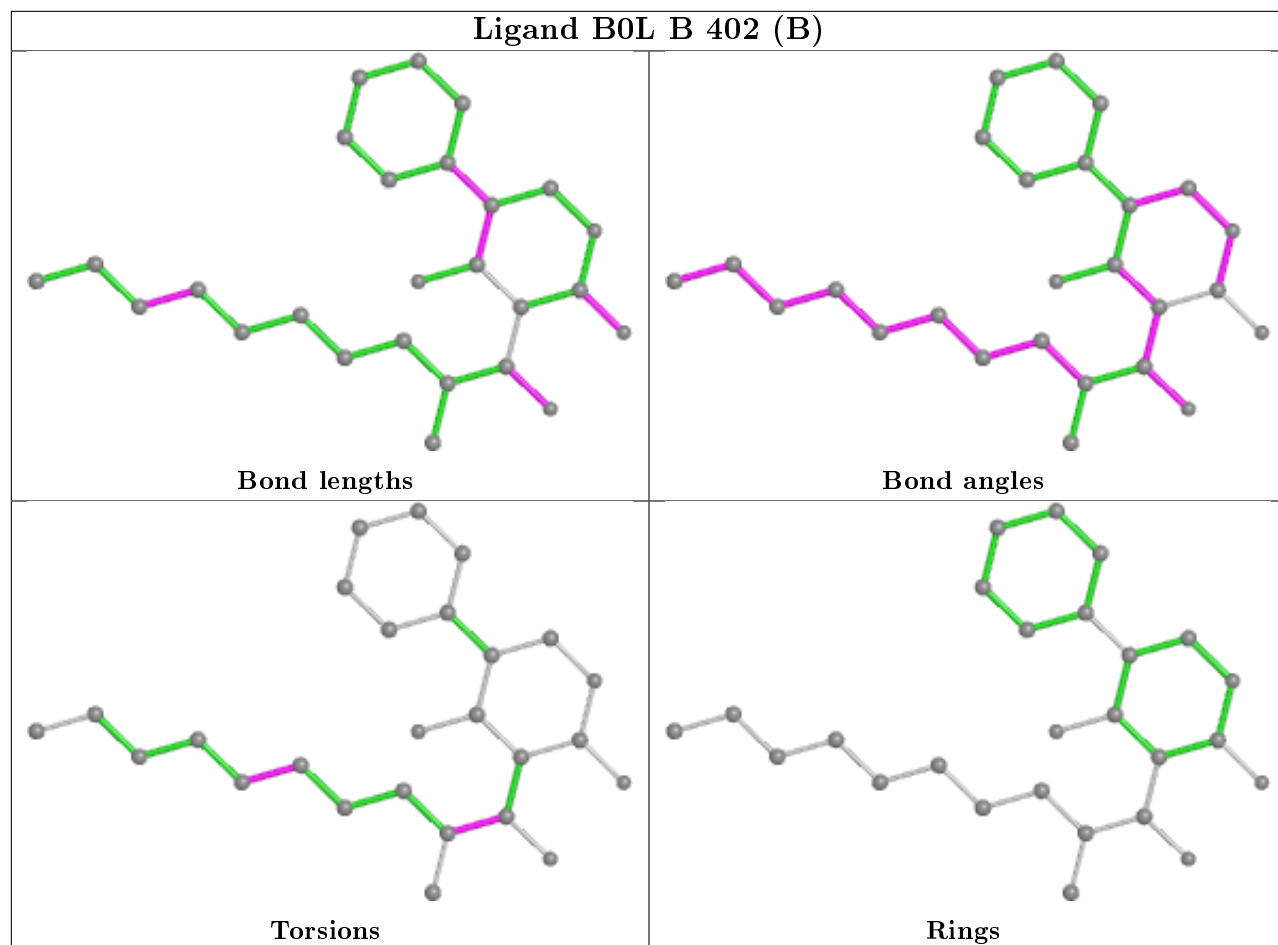
There are no ring outliers.

13 monomers are involved in 27 short contacts:

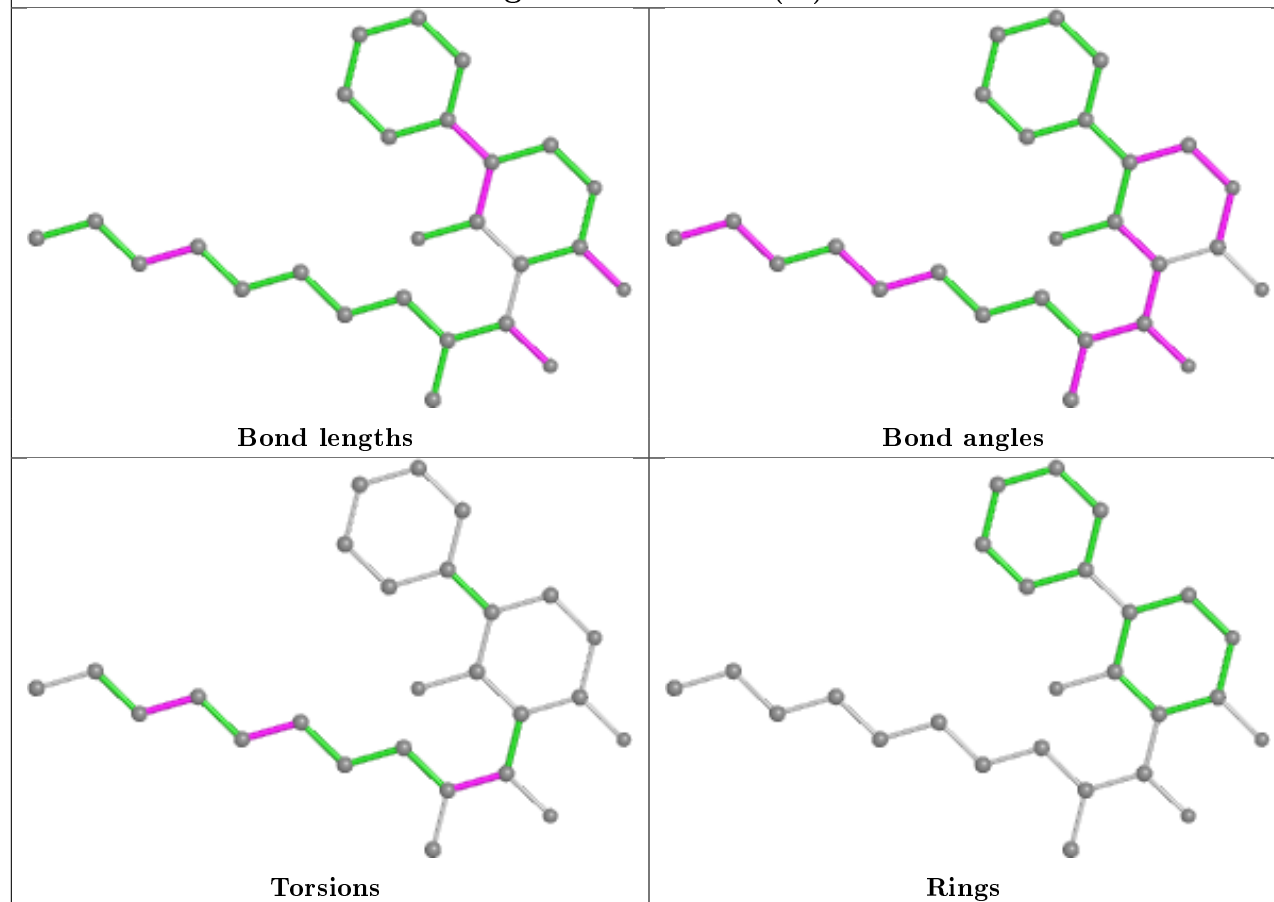
Mol	Chain	Res	Type	Clashes	Symm-Clashes
4	B	409	EDO	7	0
4	A	405	EDO	3	0
4	A	403	EDO	1	0
3	B	402[A]	B0L	1	0
4	B	404	EDO	1	0
6	A	417	GOL	1	0
4	B	406	EDO	2	0
4	A	407	EDO	1	0
3	A	402	B0L	2	0
4	A	408	EDO	1	0
4	B	407	EDO	5	0
4	B	408	EDO	1	0
4	B	405	EDO	1	0

The following is a two-dimensional graphical depiction of Mogul quality analysis of bond lengths, bond angles, torsion angles, and ring geometry for all instances of the Ligand of Interest. In addition, ligands with molecular weight > 250 and outliers as shown on the validation Tables will also be included. For torsion angles, if less than 5% of the Mogul distribution of torsion angles is within 10 degrees of the torsion angle in question, then that torsion angle is considered an outlier. Any bond that is central to one or more torsion angles identified as an outlier by Mogul will be highlighted in the graph. For rings, the root-mean-square deviation (RMSD) between the ring in question and similar rings identified by Mogul is calculated over all ring torsion angles. If the average RMSD is greater than 60 degrees and the minimal RMSD between the ring in question and any Mogul-identified rings is also greater than 60 degrees, then that ring is considered an outlier. The outliers are highlighted in purple. The color gray indicates Mogul did not find sufficient equivalents in the CSD to analyse the geometry.

Ligand B0L B 402 (B)

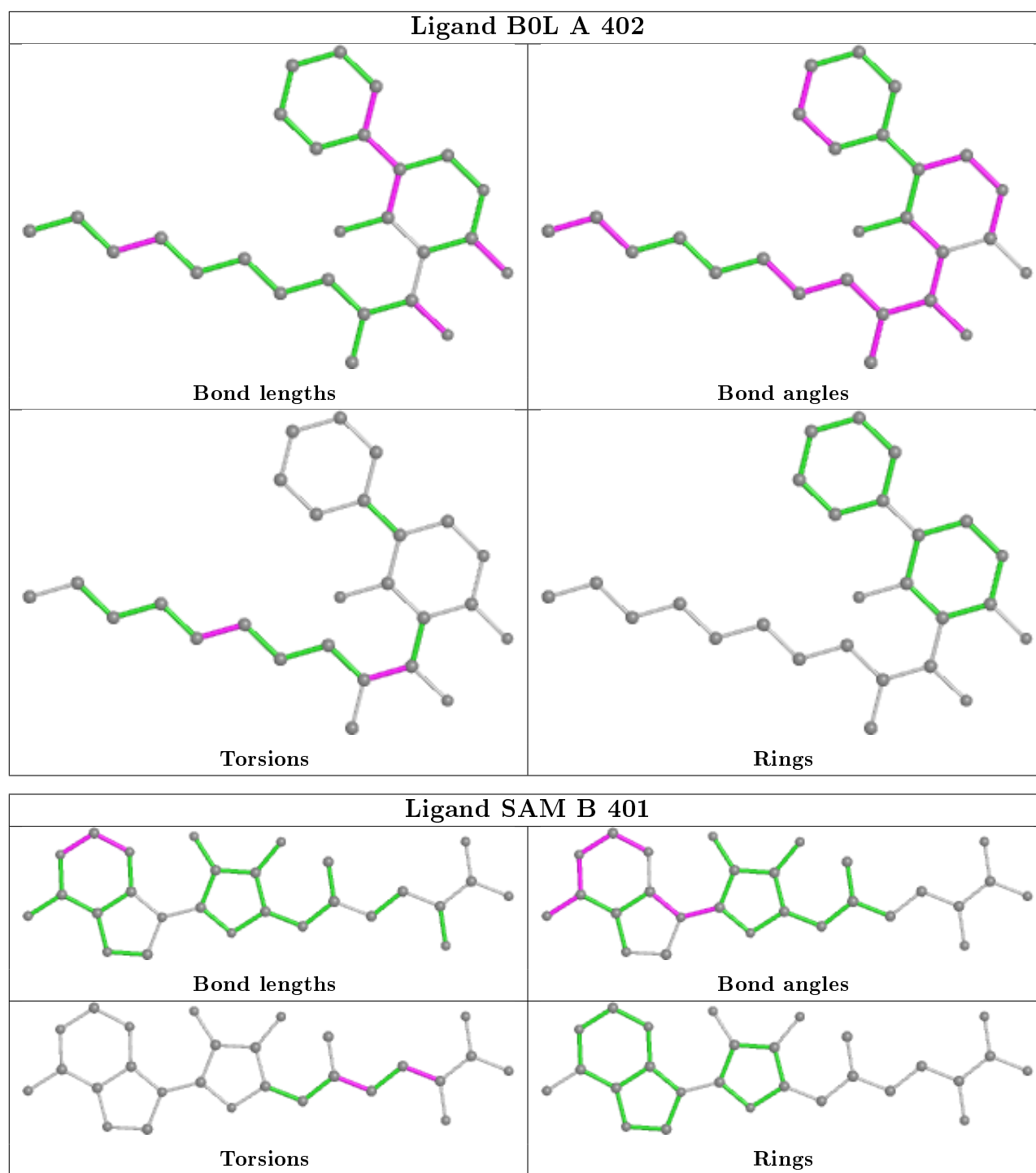


Ligand B0L B 402 (A)



Ligand SAM A 401





5.7 Other polymers [i](#)

There are no such residues in this entry.

5.8 Polymer linkage issues [i](#)

There are no chain breaks in this entry.

6 Fit of model and data [i](#)

6.1 Protein, DNA and RNA chains [i](#)

In the following table, the column labelled ‘#RSRZ> 2’ contains the number (and percentage) of RSRZ outliers, followed by percent RSRZ outliers for the chain as percentile scores relative to all X-ray entries and entries of similar resolution. The OWAB column contains the minimum, median, 95th percentile and maximum values of the occupancy-weighted average B-factor per residue. The column labelled ‘Q< 0.9’ lists the number of (and percentage) of residues with an average occupancy less than 0.9.

Mol	Chain	Analysed	<RSRZ>	#RSRZ>2	OWAB(Å ²)	Q<0.9
1	A	389/405 (96%)	-0.46	1 (0%) 94 94	7, 13, 30, 50	0
1	B	389/405 (96%)	-0.35	4 (1%) 82 85	6, 15, 34, 58	0
All	All	778/810 (96%)	-0.40	5 (0%) 89 91	6, 14, 33, 58	0

All (5) RSRZ outliers are listed below:

Mol	Chain	Res	Type	RSRZ
1	B	266	LEU	4.0
1	B	218	PRO	3.4
1	B	219	GLU	3.2
1	B	217	GLU	3.0
1	A	266	LEU	2.2

6.2 Non-standard residues in protein, DNA, RNA chains [i](#)

There are no non-standard protein/DNA/RNA residues in this entry.

6.3 Carbohydrates [i](#)

There are no carbohydrates in this entry.

6.4 Ligands [i](#)

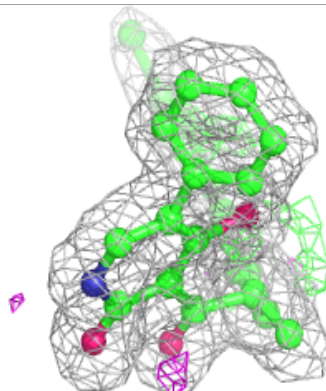
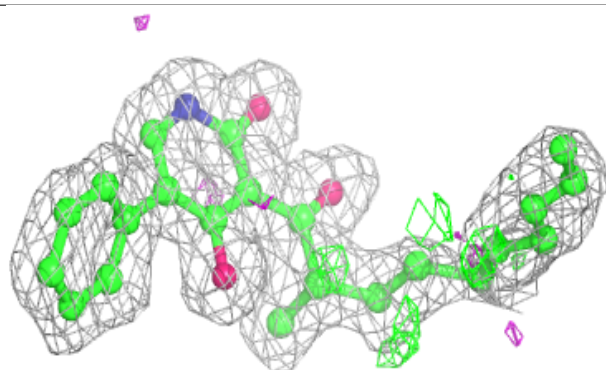
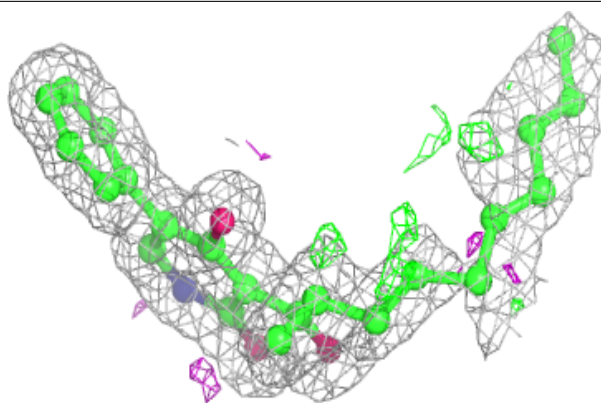
In the following table, the Atoms column lists the number of modelled atoms in the group and the number defined in the chemical component dictionary. The B-factors column lists the minimum, median, 95th percentile and maximum values of B factors of atoms in the group. The column labelled ‘Q< 0.9’ lists the number of atoms with occupancy less than 0.9.

Mol	Type	Chain	Res	Atoms	RSCC	RSR	B-factors(\AA^2)	Q<0.9
5	CL	A	416	1/1	0.66	0.29	99,99,99,99	0
4	EDO	A	410	4/4	0.67	0.32	35,41,42,54	0
5	CL	B	412	1/1	0.77	0.18	61,61,61,61	0
6	GOL	A	417	6/6	0.77	0.30	43,46,50,66	0
5	CL	B	411	1/1	0.79	0.10	55,55,55,55	0
4	EDO	B	406	4/4	0.81	0.29	26,37,42,45	0
7	NA	A	418	1/1	0.81	0.11	39,39,39,39	0
4	EDO	A	408	4/4	0.85	0.32	29,41,45,51	0
4	EDO	B	407	4/4	0.86	0.15	19,35,36,37	0
4	EDO	A	407	4/4	0.87	0.28	31,31,40,42	0
4	EDO	B	403	4/4	0.87	0.38	42,46,54,57	0
5	CL	B	410	1/1	0.88	0.09	53,53,53,53	0
5	CL	A	414	1/1	0.89	0.07	52,52,52,52	0
4	EDO	B	409	4/4	0.89	0.31	20,20,20,20	0
8	IMD	A	419	5/5	0.89	0.19	31,33,39,49	0
4	EDO	A	409	4/4	0.90	0.14	35,37,43,49	0
4	EDO	B	404	4/4	0.90	0.22	21,34,40,49	0
4	EDO	A	404	4/4	0.92	0.13	43,48,50,54	0
4	EDO	A	406	4/4	0.93	0.16	20,30,44,54	0
5	CL	A	415	1/1	0.93	0.08	57,57,57,57	0
4	EDO	A	411	4/4	0.93	0.16	30,35,36,42	0
4	EDO	A	405	4/4	0.93	0.15	21,24,33,34	0
4	EDO	A	403	4/4	0.94	0.18	24,26,35,40	0
3	B0L	B	402[B]	26/26	0.95	0.11	9,14,35,44	26
3	B0L	A	402	26/26	0.95	0.10	11,15,44,64	0
3	B0L	B	402[A]	26/26	0.95	0.11	9,14,35,44	26
7	NA	B	413	1/1	0.95	0.10	32,32,32,32	0
4	EDO	B	408	4/4	0.96	0.09	27,27,36,38	0
2	SAM	A	401	27/27	0.97	0.07	8,12,25,33	0
4	EDO	B	405	4/4	0.97	0.19	28,28,50,51	0
2	SAM	B	401	27/27	0.98	0.09	7,10,20,29	0
5	CL	A	413	1/1	0.99	0.04	15,15,15,15	0
5	CL	A	412	1/1	0.99	0.05	19,19,19,19	0

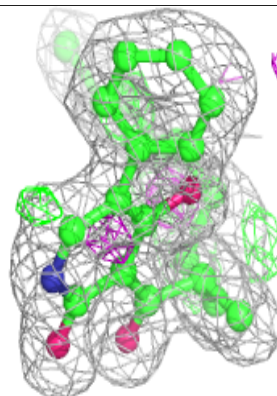
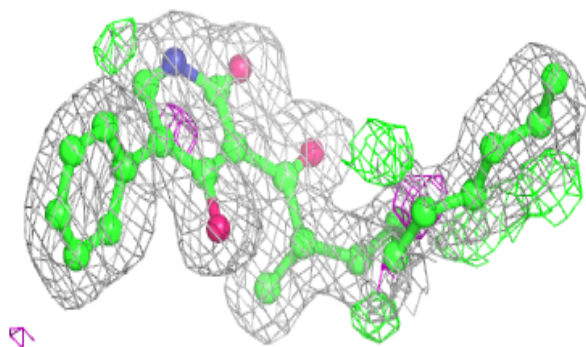
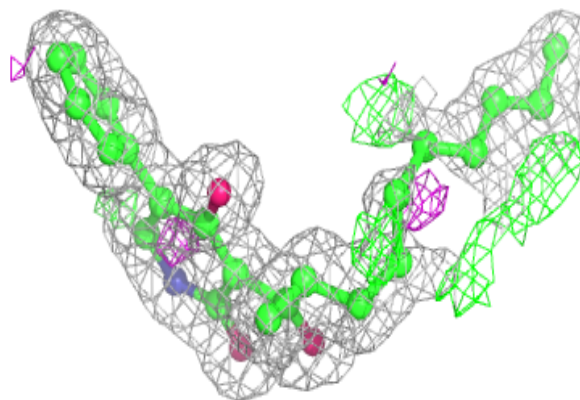
The following is a graphical depiction of the model fit to experimental electron density of all instances of the Ligand of Interest. In addition, ligands with molecular weight > 250 and outliers as shown on the geometry validation Tables will also be included. Each fit is shown from different orientation to approximate a three-dimensional view.

Electron density around B0L B 402 (B):

$2mF_o-DF_c$ (at 0.7 rmsd) in gray
 mF_o-DF_c (at 3 rmsd) in purple (negative)
and green (positive)

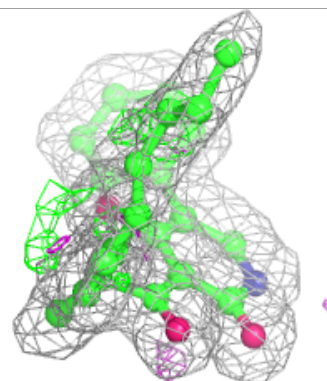
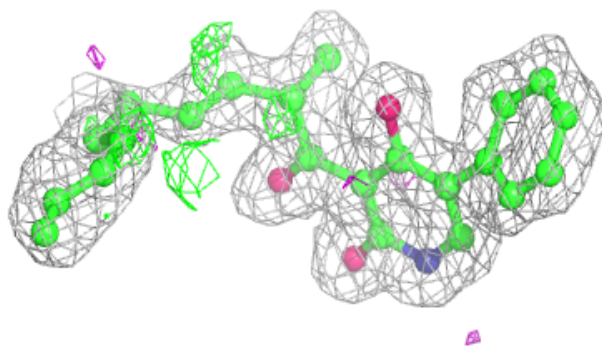
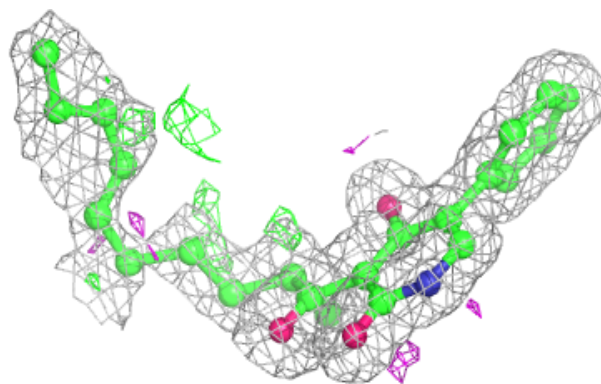
**Electron density around B0L A 402:**

$2mF_o-DF_c$ (at 0.7 rmsd) in gray
 mF_o-DF_c (at 3 rmsd) in purple (negative)
and green (positive)

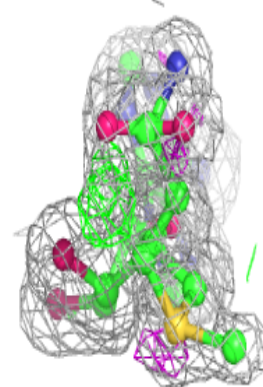
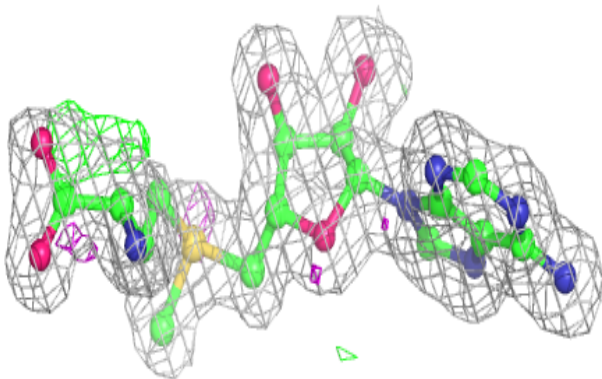
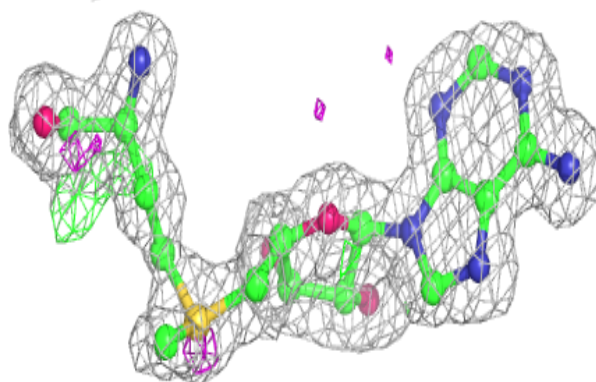


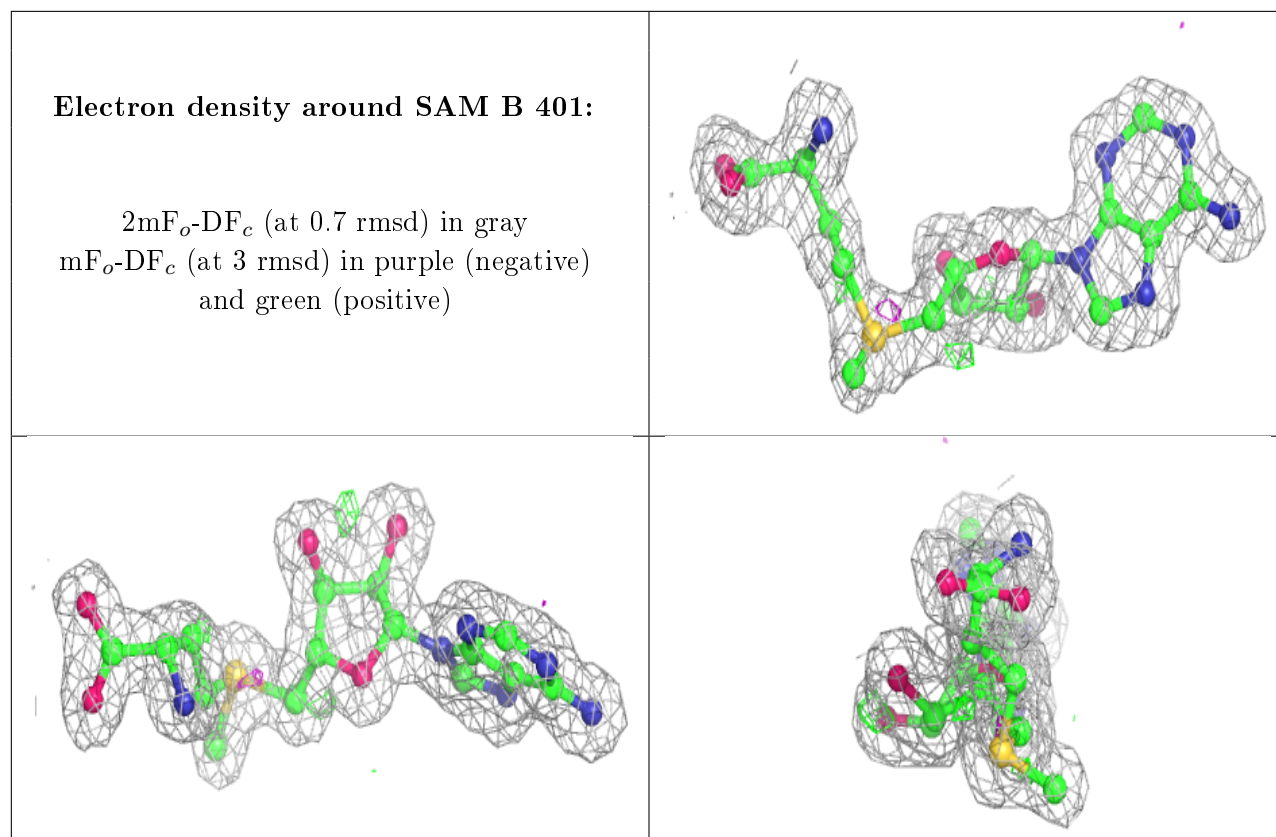
Electron density around B0L B 402 (A):

$2mF_o-DF_c$ (at 0.7 rmsd) in gray
 mF_o-DF_c (at 3 rmsd) in purple (negative)
and green (positive)

**Electron density around SAM A 401:**

$2mF_o-DF_c$ (at 0.7 rmsd) in gray
 mF_o-DF_c (at 3 rmsd) in purple (negative)
and green (positive)





6.5 Other polymers [i](#)

There are no such residues in this entry.