



Full wwPDB X-ray Structure Validation Report ⓘ

May 15, 2020 – 11:26 am BST

PDB ID : 4IZ0
Title : Crystal structure of HCV NS5B polymerase in complex with 2,4,5-trichloro-N-(5-methyl-1,2-oxazol-3-yl)benzenesulfonamide
Authors : Coulombe, R.
Deposited on : 2013-01-29
Resolution : 2.22 Å(reported)

This is a Full wwPDB X-ray Structure Validation Report for a publicly released PDB entry.

We welcome your comments at validation@mail.wwpdb.org

A user guide is available at

<https://www.wwpdb.org/validation/2017/XrayValidationReportHelp>

with specific help available everywhere you see the ⓘ symbol.

The following versions of software and data (see [references ⓘ](#)) were used in the production of this report:

MolProbity : 4.02b-467
Mogul : 1.8.5 (274361), CSD as541be (2020)
Xtriage (Phenix) : 1.13
EDS : 2.11
buster-report : 1.1.7 (2018)
Percentile statistics : 20191225.v01 (using entries in the PDB archive December 25th 2019)
Refmac : 5.8.0158
CCP4 : 7.0.044 (Gargrove)
Ideal geometry (proteins) : Engh & Huber (2001)
Ideal geometry (DNA, RNA) : Parkinson et al. (1996)
Validation Pipeline (wwPDB-VP) : 2.11

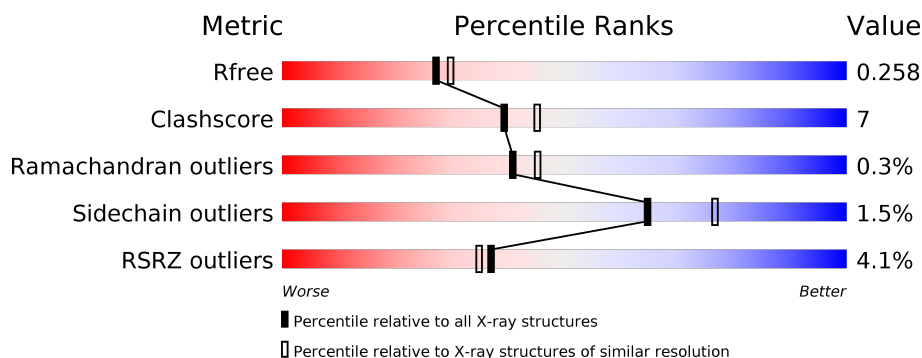
1 Overall quality at a glance ⓘ

The following experimental techniques were used to determine the structure:

X-RAY DIFFRACTION

The reported resolution of this entry is 2.22 Å.

Percentile scores (ranging between 0-100) for global validation metrics of the entry are shown in the following graphic. The table shows the number of entries on which the scores are based.



Metric	Whole archive (#Entries)	Similar resolution (#Entries, resolution range(Å))
R_{free}	130704	5912 (2.24-2.20)
Clashscore	141614	6646 (2.24-2.20)
Ramachandran outliers	138981	6543 (2.24-2.20)
Sidechain outliers	138945	6544 (2.24-2.20)
RSRZ outliers	127900	5797 (2.24-2.20)

The table below summarises the geometric issues observed across the polymeric chains and their fit to the electron density. The red, orange, yellow and green segments on the lower bar indicate the fraction of residues that contain outliers for ≥ 3 , 2, 1 and 0 types of geometric quality criteria respectively. A grey segment represents the fraction of residues that are not modelled. The numeric value for each fraction is indicated below the corresponding segment, with a dot representing fractions $\leq 5\%$. The upper red bar (where present) indicates the fraction of residues that have poor fit to the electron density. The numeric value is given above the bar.

Mol	Chain	Length	Quality of chain
1	A	576	<div> <div>2%</div> <div> <div></div> <div>82%</div> <div>14%</div> <div>••</div> </div> </div>
1	B	576	<div> <div>6%</div> <div> <div></div> <div>81%</div> <div>16%</div> <div>•</div> </div> </div>

The following table lists non-polymeric compounds, carbohydrate monomers and non-standard residues in protein, DNA, RNA chains that are outliers for geometric or electron-density-fit criteria:

Mol	Type	Chain	Res	Chirality	Geometry	Clashes	Electron density
2	2BI	A	602	-	-	X	X

2 Entry composition

There are 3 unique types of molecules in this entry. The entry contains 8746 atoms, of which 0 are hydrogens and 0 are deuteriums.

In the tables below, the ZeroOcc column contains the number of atoms modelled with zero occupancy, the AltConf column contains the number of residues with at least one atom in alternate conformation and the Trace column contains the number of residues modelled with at most 2 atoms.

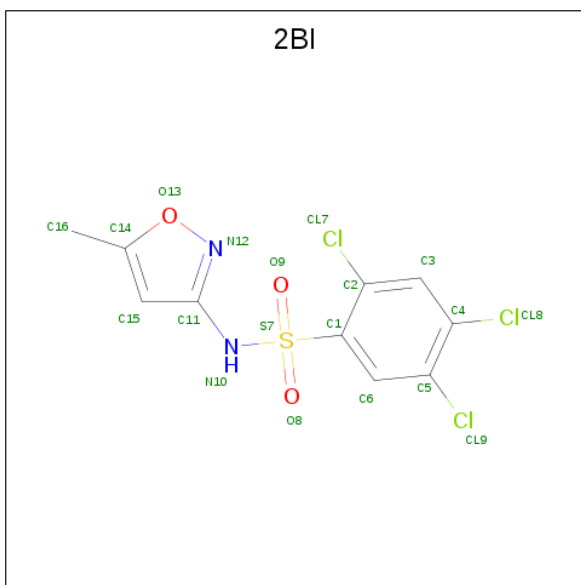
- Molecule 1 is a protein called RNA-directed RNA polymerase.

Mol	Chain	Residues	Atoms					ZeroOcc	AltConf	Trace
1	A	559	Total	C	N	O	S	0	0	0
			4358	2745	770	811	32			
1	B	558	Total	C	N	O	S	0	0	0
			4346	2737	768	809	32			

There are 12 discrepancies between the modelled and reference sequences:

Chain	Residue	Modelled	Actual	Comment	Reference
A	571	HIS	-	EXPRESSION TAG	UNP O92972
A	572	HIS	-	EXPRESSION TAG	UNP O92972
A	573	HIS	-	EXPRESSION TAG	UNP O92972
A	574	HIS	-	EXPRESSION TAG	UNP O92972
A	575	HIS	-	EXPRESSION TAG	UNP O92972
A	576	HIS	-	EXPRESSION TAG	UNP O92972
B	571	HIS	-	EXPRESSION TAG	UNP O92972
B	572	HIS	-	EXPRESSION TAG	UNP O92972
B	573	HIS	-	EXPRESSION TAG	UNP O92972
B	574	HIS	-	EXPRESSION TAG	UNP O92972
B	575	HIS	-	EXPRESSION TAG	UNP O92972
B	576	HIS	-	EXPRESSION TAG	UNP O92972

- Molecule 2 is 2,4,5-trichloro-N-(5-methyl-1,2-oxazol-3-yl)benzenesulfonamide (three-letter code: 2BI) (formula: C₁₀H₇Cl₃N₂O₃S).



Mol	Chain	Residues	Atoms						ZeroOcc	AltConf
2	A	1	Total	C	Cl	N	O	S	0	0
			19	10	3	2	3	1		
2	A	1	Total	C	Cl	N	O	S	0	0
			19	10	3	2	3	1		

- Molecule 3 is water.

Mol	Chain	Residues	Atoms		ZeroOcc	AltConf
3	A	4	Total	O	0	0
			4	4		

- Molecule 1: RNA-directed RNA polymerase



4 Data and refinement statistics

Property	Value	Source
Space group	P 21 21 21	Depositor
Cell constants a, b, c, α , β , γ	105.71Å 107.85Å 133.95Å 90.00° 90.00° 90.00°	Depositor
Resolution (Å)	40.00 – 2.22 36.33 – 2.22	Depositor EDS
% Data completeness (in resolution range)	99.5 (40.00-2.22) 99.3 (36.33-2.22)	Depositor EDS
R_{merge}	0.07	Depositor
R_{sym}	(Not available)	Depositor
$\langle I/\sigma(I) \rangle$ ¹	2.15 (at 2.22Å)	Xtriage
Refinement program	CNS	Depositor
R, R_{free}	0.253 , 0.275 0.237 , 0.258	Depositor DCC
R_{free} test set	7649 reflections (10.08%)	wwPDB-VP
Wilson B-factor (Å ²)	37.9	Xtriage
Anisotropy	0.383	Xtriage
Bulk solvent k_{sol} (e/Å ³), B_{sol} (Å ²)	0.33 , 25.0	EDS
L-test for twinning ²	$\langle L \rangle = 0.48$, $\langle L^2 \rangle = 0.31$	Xtriage
Estimated twinning fraction	0.018 for k,h,-l	Xtriage
F_o, F_c correlation	0.92	EDS
Total number of atoms	8746	wwPDB-VP
Average B, all atoms (Å ²)	40.0	wwPDB-VP

Xtriage's analysis on translational NCS is as follows: *The largest off-origin peak in the Patterson function is 3.22% of the height of the origin peak. No significant pseudotranslation is detected.*

¹Intensities estimated from amplitudes.

²Theoretical values of $\langle |L| \rangle$, $\langle L^2 \rangle$ for acentric reflections are 0.5, 0.333 respectively for untwinned datasets, and 0.375, 0.2 for perfectly twinned datasets.

5 Model quality

5.1 Standard geometry

Bond lengths and bond angles in the following residue types are not validated in this section: 2BI

The Z score for a bond length (or angle) is the number of standard deviations the observed value is removed from the expected value. A bond length (or angle) with $|Z| > 5$ is considered an outlier worth inspection. RMSZ is the root-mean-square of all Z scores of the bond lengths (or angles).

Mol	Chain	Bond lengths		Bond angles	
		RMSZ	# Z >5	RMSZ	# Z >5
1	A	0.35	0/4453	0.61	0/6044
1	B	0.32	0/4440	0.60	0/6025
All	All	0.34	0/8893	0.61	0/12069

There are no bond length outliers.

There are no bond angle outliers.

There are no chirality outliers.

There are no planarity outliers.

5.2 Too-close contacts

In the following table, the Non-H and H(model) columns list the number of non-hydrogen atoms and hydrogen atoms in the chain respectively. The H(added) column lists the number of hydrogen atoms added and optimized by MolProbity. The Clashes column lists the number of clashes within the asymmetric unit, whereas Symm-Clashes lists symmetry related clashes.

Mol	Chain	Non-H	H(model)	H(added)	Clashes	Symm-Clashes
1	A	4358	0	4371	68	0
1	B	4346	0	4359	60	0
2	A	38	0	14	9	0
3	A	4	0	0	0	0
All	All	8746	0	8744	128	0

The all-atom clashscore is defined as the number of clashes found per 1000 atoms (including hydrogen atoms). The all-atom clashscore for this structure is 7.

All (128) close contacts within the same asymmetric unit are listed below, sorted by their clash magnitude.

Atom-1	Atom-2	Interatomic distance (Å)	Clash overlap (Å)
1:A:448:TYR:N	2:A:602:2BI:N12	2.10	1.00
1:A:414:MET:HG3	2:A:602:2BI:H6	1.43	0.99
1:A:531:ARG:HE	1:A:532:THR:H	1.18	0.90
1:B:303:CYS:HG	1:B:311:CYS:HG	1.23	0.82
1:A:505:ARG:HH22	1:A:531:ARG:NH1	1.81	0.78
1:A:414:MET:CG	2:A:602:2BI:H6	2.14	0.77
1:A:82:LEU:HD13	1:A:249:ALA:HB2	1.70	0.73
1:A:106:LYS:HE2	1:A:106:LYS:HA	1.70	0.72
1:A:447:ILE:HA	2:A:602:2BI:O13	1.92	0.69
1:B:336:LEU:HD23	1:B:356:PRO:HD3	1.75	0.68
1:A:234:ARG:NH1	1:A:258:GLU:OE2	2.24	0.68
1:A:519:ALA:O	1:A:523:ARG:HG3	1.97	0.65
1:A:234:ARG:HH11	1:A:234:ARG:HG2	1.61	0.65
1:B:314:LEU:HB3	1:B:321:VAL:CG1	2.28	0.64
1:B:390:THR:HB	1:B:391:PRO:HD3	1.80	0.63
1:A:32:ARG:HH11	1:A:32:ARG:HG3	1.64	0.62
1:A:32:ARG:NH2	1:A:495:PRO:HG3	2.15	0.62
1:B:485:VAL:O	1:B:489:LEU:HG	2.00	0.62
1:B:85:ILE:HD13	1:B:173:MET:SD	2.40	0.61
1:B:309:GLN:O	1:B:324:CYS:HB2	2.02	0.60
1:A:57:LEU:HD23	1:A:57:LEU:C	2.21	0.60
1:B:40:THR:HB	1:B:157:ALA:HB2	1.83	0.59
1:B:470:SER:O	1:B:474:LEU:HG	2.02	0.58
1:A:309:GLN:O	1:A:324:CYS:HB2	2.04	0.58
1:A:531:ARG:HE	1:A:532:THR:N	1.97	0.57
1:B:84:SER:OG	1:B:87:GLU:HG3	2.05	0.56
1:A:336:LEU:HD12	1:A:356:PRO:HD3	1.86	0.56
1:B:458:ASP:HA	1:B:461:GLN:NE2	2.19	0.56
1:B:29:SER:O	1:B:30:LEU:HB3	2.06	0.56
1:A:505:ARG:HH22	1:A:531:ARG:HH11	1.50	0.56
1:B:331:GLU:CD	1:B:331:GLU:H	2.09	0.56
1:A:24:ASN:HB3	1:A:27:SER:OG	2.06	0.55
1:A:501:ARG:NH1	1:A:529:ALA:HA	2.21	0.55
1:B:187:MET:HE2	1:B:296:TYR:CD2	2.44	0.53
1:B:515:GLY:HA2	1:B:519:ALA:HB2	1.90	0.53
1:A:233:ILE:HD13	1:A:261:TYR:O	2.07	0.53
1:A:300:THR:N	1:A:313:MET:HE1	2.23	0.53
1:A:503:ARG:O	1:A:507:VAL:HG23	2.08	0.53
1:A:233:ILE:HD12	1:A:262:ILE:HA	1.90	0.53
1:B:116:VAL:HG12	1:B:120:ARG:NH1	2.24	0.53
1:B:158:ARG:HG3	1:B:158:ARG:HH11	1.74	0.52
1:A:414:MET:HG3	2:A:602:2BI:C16	2.29	0.52

Continued on next page...

Continued from previous page...

Atom-1	Atom-2	Interatomic distance (Å)	Clash overlap (Å)
1:B:187:MET:HE3	1:B:296:TYR:HB2	1.90	0.52
1:B:273:ASN:ND2	1:B:275:GLY:H	2.08	0.52
1:A:119:ILE:HD13	1:A:169:VAL:HG11	1.90	0.51
1:B:419:LEU:C	1:B:419:LEU:HD23	2.30	0.50
2:A:602:2BI:CL7	2:A:602:2BI:O8	2.66	0.50
1:A:176:TYR:OH	1:A:562:HIS:HE1	1.94	0.50
1:A:68:LEU:O	1:A:72:LYS:HG3	2.12	0.50
1:B:211:LYS:HB2	1:B:214:PRO:HB3	1.93	0.50
1:B:503:ARG:O	1:B:507:VAL:HG23	2.12	0.50
1:A:40:THR:HB	1:A:157:ALA:HB2	1.93	0.50
1:A:234:ARG:NH1	1:A:234:ARG:HG2	2.27	0.49
1:A:374:HIS:HD2	1:A:476:SER:HB3	1.77	0.49
1:B:26:LEU:O	1:B:27:SER:HB3	2.12	0.49
1:B:144:VAL:HB	1:B:394:ARG:HG2	1.94	0.49
1:A:381:VAL:HG11	1:A:474:LEU:HD21	1.95	0.49
1:B:219:TYR:HB3	1:B:320:LEU:HD23	1.94	0.49
1:A:182:LEU:HD23	1:A:182:LEU:C	2.32	0.49
1:A:28:ASN:O	1:A:32:ARG:HD3	2.13	0.49
1:A:308:LEU:HD12	1:A:308:LEU:HA	1.72	0.48
1:B:313:MET:SD	1:B:322:VAL:HG22	2.54	0.48
1:A:144:VAL:HB	1:A:394:ARG:HG2	1.94	0.48
1:B:233:ILE:HB	1:B:262:ILE:HD12	1.95	0.48
1:B:300:THR:HA	1:B:313:MET:HE3	1.96	0.48
1:A:51:LYS:HE2	1:A:223:CYS:SG	2.54	0.47
1:B:314:LEU:HB3	1:B:321:VAL:HG13	1.96	0.47
1:B:215:MET:HB2	1:B:326:SER:HB2	1.95	0.47
1:B:434:LEU:HD23	1:B:439:LEU:HD11	1.96	0.47
1:B:29:SER:O	1:B:30:LEU:CB	2.61	0.47
1:A:515:GLY:HA2	1:A:519:ALA:HB2	1.96	0.47
1:A:32:ARG:HG2	1:A:493:GLY:O	2.15	0.46
1:B:496:PRO:HG2	1:B:499:THR:HG23	1.97	0.46
1:A:459:LEU:O	1:A:463:ILE:HG13	2.15	0.46
1:A:461:GLN:HB2	1:A:545:LEU:HD11	1.97	0.46
1:B:31:LEU:HD12	1:B:31:LEU:O	2.16	0.46
1:B:48:ARG:HG2	1:B:159:LEU:HG	1.97	0.46
1:B:68:LEU:O	1:B:72:LYS:HG3	2.16	0.46
1:A:381:VAL:HG11	1:A:474:LEU:CD2	2.44	0.46
1:A:32:ARG:HG3	1:A:32:ARG:NH1	2.27	0.46
1:A:48:ARG:O	1:A:52:VAL:HG22	2.16	0.46
1:B:106:LYS:NZ	1:B:110:ASN:HD21	2.14	0.46
1:B:109:ARG:HH11	1:B:109:ARG:HG2	1.81	0.45

Continued on next page...

Continued from previous page...

Atom-1	Atom-2	Interatomic distance (Å)	Clash overlap (Å)
1:B:532:THR:O	1:B:533:LYS:HB2	2.16	0.45
1:B:83:LEU:HB2	1:B:173:MET:HA	1.98	0.45
1:A:106:LYS:HA	1:A:106:LYS:CE	2.44	0.45
1:B:196:SER:OG	1:B:199:GLN:HG3	2.16	0.45
1:A:45:ALA:O	1:A:49:GLN:HG3	2.17	0.45
1:A:531:ARG:CD	1:A:531:ARG:H	2.30	0.45
1:B:30:LEU:O	1:B:494:VAL:HG22	2.17	0.44
1:B:84:SER:OG	1:B:86:GLU:HG2	2.16	0.44
1:A:85:ILE:HD11	1:A:120:ARG:HG2	1.99	0.44
1:B:517:ARG:HG3	1:B:517:ARG:HH11	1.82	0.44
1:A:308:LEU:HD13	1:A:335:ALA:HB1	1.99	0.44
1:A:233:ILE:CD1	1:A:262:ILE:HA	2.48	0.44
1:A:531:ARG:NE	1:A:531:ARG:H	2.15	0.44
1:B:375:ASP:OD1	1:B:379:LYS:HB2	2.18	0.43
1:A:306:ALA:O	1:A:307:LYS:HB2	2.19	0.43
1:A:448:TYR:HA	2:A:602:2BI:H3	1.83	0.43
1:B:172:LYS:HE3	1:B:560:ILE:HD13	2.00	0.43
1:B:30:LEU:O	1:B:494:VAL:HA	2.18	0.43
1:A:172:LYS:HE3	1:A:560:ILE:HD13	2.01	0.43
1:A:200:ARG:CD	2:A:602:2BI:CL8	3.03	0.43
1:A:182:LEU:HD12	1:A:243:CYS:SG	2.58	0.43
1:B:434:LEU:HD21	1:B:511:LEU:HD23	1.99	0.43
1:B:57:LEU:HD12	1:B:57:LEU:HA	1.81	0.43
1:A:398:GLU:HG2	1:A:403:THR:OG1	2.19	0.43
1:B:26:LEU:HA	1:B:26:LEU:HD23	1.69	0.43
1:B:268:ASN:HB3	1:B:274:CYS:SG	2.59	0.43
1:A:374:HIS:CD2	1:A:476:SER:HB3	2.54	0.42
1:B:432:ILE:O	1:B:436:GLN:HG2	2.19	0.42
1:B:374:HIS:O	1:B:474:LEU:HA	2.19	0.42
1:B:327:ALA:O	1:B:331:GLU:HG3	2.18	0.42
1:A:491:LYS:HE3	1:A:492:LEU:CD1	2.49	0.42
1:B:116:VAL:HG12	1:B:120:ARG:HH12	1.84	0.42
1:A:254:ARG:HG2	1:B:251:GLN:NE2	2.35	0.42
1:A:390:THR:HB	1:A:391:PRO:HD3	2.00	0.42
1:A:314:LEU:HB3	1:A:321:VAL:CG1	2.50	0.42
1:A:348:ALA:N	1:A:349:PRO:CD	2.82	0.42
1:A:447:ILE:HA	2:A:602:2BI:N12	2.35	0.42
1:B:27:SER:CB	1:B:400:ALA:HB2	2.50	0.42
1:B:515:GLY:CA	1:B:519:ALA:HB2	2.50	0.41
1:B:160:ILE:HA	1:B:282:SER:OG	2.21	0.41
1:A:257:THR:O	1:A:262:ILE:HG23	2.20	0.41

Continued on next page...

Continued from previous page...

Atom-1	Atom-2	Interatomic distance (Å)	Clash overlap (Å)
1:A:461:GLN:HB3	1:A:542:ALA:HA	2.03	0.41
1:B:257:THR:O	1:B:262:ILE:HB	2.21	0.41
1:A:314:LEU:HD12	1:A:314:LEU:HA	1.88	0.41
1:A:485:VAL:O	1:A:489:LEU:HG	2.20	0.41

There are no symmetry-related clashes.

5.3 Torsion angles [i](#)

5.3.1 Protein backbone [i](#)

In the following table, the Percentiles column shows the percent Ramachandran outliers of the chain as a percentile score with respect to all X-ray entries followed by that with respect to entries of similar resolution.

The Analysed column shows the number of residues for which the backbone conformation was analysed, and the total number of residues.

Mol	Chain	Analysed	Favoured	Allowed	Outliers	Percentiles	
1	A	555/576 (96%)	541 (98%)	14 (2%)	0	100	100
1	B	554/576 (96%)	525 (95%)	26 (5%)	3 (0%)	29	30
All	All	1109/1152 (96%)	1066 (96%)	40 (4%)	3 (0%)	41	45

All (3) Ramachandran outliers are listed below:

Mol	Chain	Res	Type
1	B	25	PRO
1	B	154	ARG
1	B	24	ASN

5.3.2 Protein sidechains [i](#)

In the following table, the Percentiles column shows the percent sidechain outliers of the chain as a percentile score with respect to all X-ray entries followed by that with respect to entries of similar resolution.

The Analysed column shows the number of residues for which the sidechain conformation was analysed, and the total number of residues.

Mol	Chain	Analysed	Rotameric	Outliers	Percentiles	
1	A	477/491 (97%)	466 (98%)	11 (2%)	50	62
1	B	475/491 (97%)	472 (99%)	3 (1%)	86	92
All	All	952/982 (97%)	938 (98%)	14 (2%)	65	76

All (14) residues with a non-rotameric sidechain are listed below:

Mol	Chain	Res	Type
1	A	106	LYS
1	A	159	LEU
1	A	308	LEU
1	A	309	GLN
1	A	313	MET
1	A	336	LEU
1	A	402	HIS
1	A	461	GLN
1	A	476	SER
1	A	531	ARG
1	A	556	SER
1	B	32	ARG
1	B	273	ASN
1	B	310	ASP

Some sidechains can be flipped to improve hydrogen bonding and reduce clashes. All (14) such sidechains are listed below:

Mol	Chain	Res	Type
1	A	49	GLN
1	A	251	GLN
1	A	273	ASN
1	A	309	GLN
1	A	374	HIS
1	A	514	GLN
1	A	544	GLN
1	A	562	HIS
1	B	49	GLN
1	B	110	ASN
1	B	117	ASN
1	B	251	GLN
1	B	273	ASN
1	B	406	ASN

5.3.3 RNA ⓘ

There are no RNA molecules in this entry.

5.4 Non-standard residues in protein, DNA, RNA chains ⓘ

There are no non-standard protein/DNA/RNA residues in this entry.

5.5 Carbohydrates ⓘ

There are no carbohydrates in this entry.

5.6 Ligand geometry ⓘ

2 ligands are modelled in this entry.

In the following table, the Counts columns list the number of bonds (or angles) for which Mogul statistics could be retrieved, the number of bonds (or angles) that are observed in the model and the number of bonds (or angles) that are defined in the Chemical Component Dictionary. The Link column lists molecule types, if any, to which the group is linked. The Z score for a bond length (or angle) is the number of standard deviations the observed value is removed from the expected value. A bond length (or angle) with $|Z| > 2$ is considered an outlier worth inspection. RMSZ is the root-mean-square of all Z scores of the bond lengths (or angles).

Mol	Type	Chain	Res	Link	Bond lengths			Bond angles		
					Counts	RMSZ	# Z > 2	Counts	RMSZ	# Z > 2
2	2BI	A	602	-	17,20,20	1.04	1 (5%)	23,30,30	1.46	5 (21%)
2	2BI	A	601	-	17,20,20	1.04	1 (5%)	23,30,30	1.47	4 (17%)

In the following table, the Chirals column lists the number of chiral outliers, the number of chiral centers analysed, the number of these observed in the model and the number defined in the Chemical Component Dictionary. Similar counts are reported in the Torsion and Rings columns. '-' means no outliers of that kind were identified.

Mol	Type	Chain	Res	Link	Chirals	Torsions	Rings
2	2BI	A	602	-	-	6/9/11/11	0/2/2/2
2	2BI	A	601	-	-	2/9/11/11	0/2/2/2

All (2) bond length outliers are listed below:

Mol	Chain	Res	Type	Atoms	Z	Observed(Å)	Ideal(Å)
2	A	601	2BI	O9-S7	2.20	1.46	1.43

Continued on next page...

Continued from previous page...

Mol	Chain	Res	Type	Atoms	Z	Observed(Å)	Ideal(Å)
2	A	602	2BI	O9-S7	2.20	1.46	1.43

All (9) bond angle outliers are listed below:

Mol	Chain	Res	Type	Atoms	Z	Observed(°)	Ideal(°)
2	A	601	2BI	C1-C2-CL7	3.65	124.16	121.49
2	A	602	2BI	C1-C2-CL7	3.59	124.12	121.49
2	A	601	2BI	C1-S7-N10	-3.17	103.57	107.27
2	A	602	2BI	C1-S7-N10	-3.12	103.62	107.27
2	A	601	2BI	C11-C15-C14	-2.37	104.79	107.23
2	A	601	2BI	C2-C1-S7	-2.36	121.71	123.25
2	A	602	2BI	C2-C1-S7	-2.34	121.72	123.25
2	A	602	2BI	C11-C15-C14	-2.31	104.85	107.23
2	A	602	2BI	C16-C14-C15	2.00	134.36	129.02

There are no chirality outliers.

All (8) torsion outliers are listed below:

Mol	Chain	Res	Type	Atoms
2	A	602	2BI	C2-C1-S7-O8
2	A	602	2BI	C2-C1-S7-O9
2	A	602	2BI	C2-C1-S7-N10
2	A	601	2BI	C2-C1-S7-N10
2	A	601	2BI	C6-C1-S7-N10
2	A	602	2BI	C6-C1-S7-O8
2	A	602	2BI	C6-C1-S7-O9
2	A	602	2BI	C6-C1-S7-N10

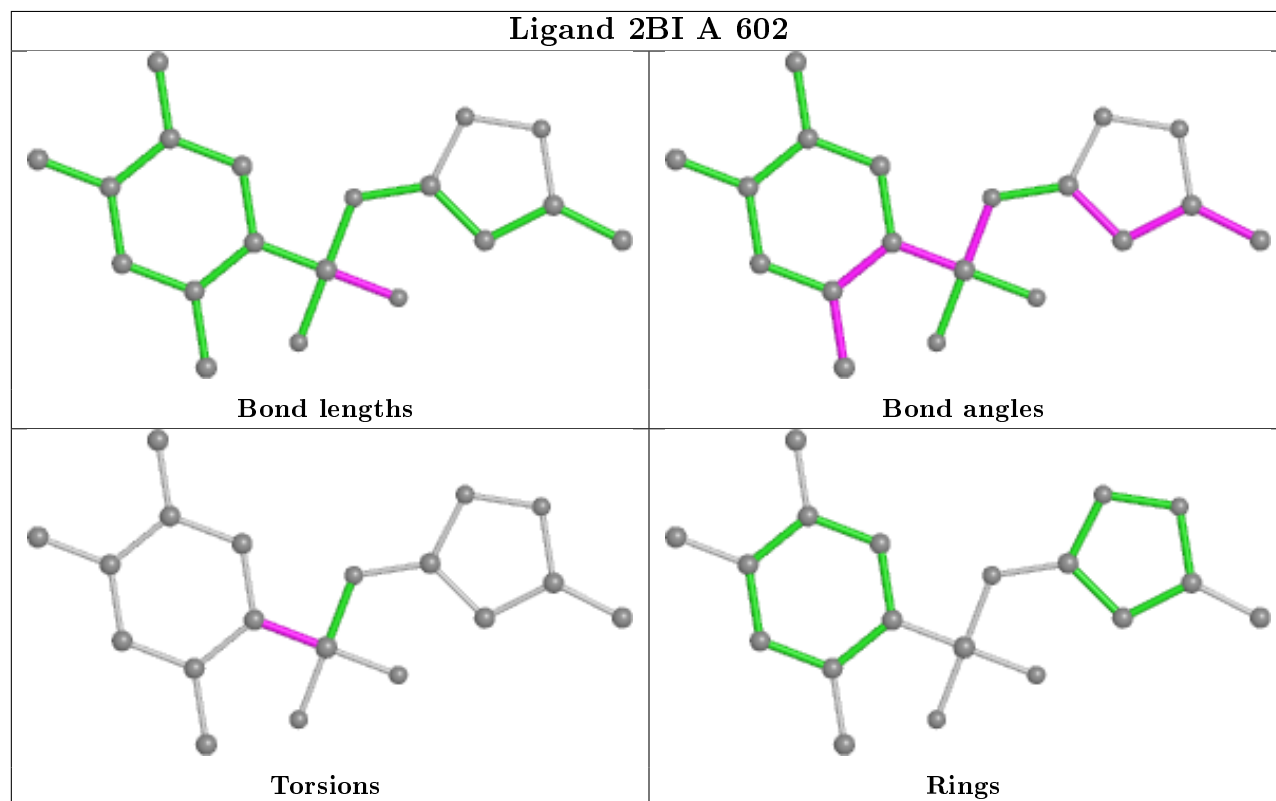
There are no ring outliers.

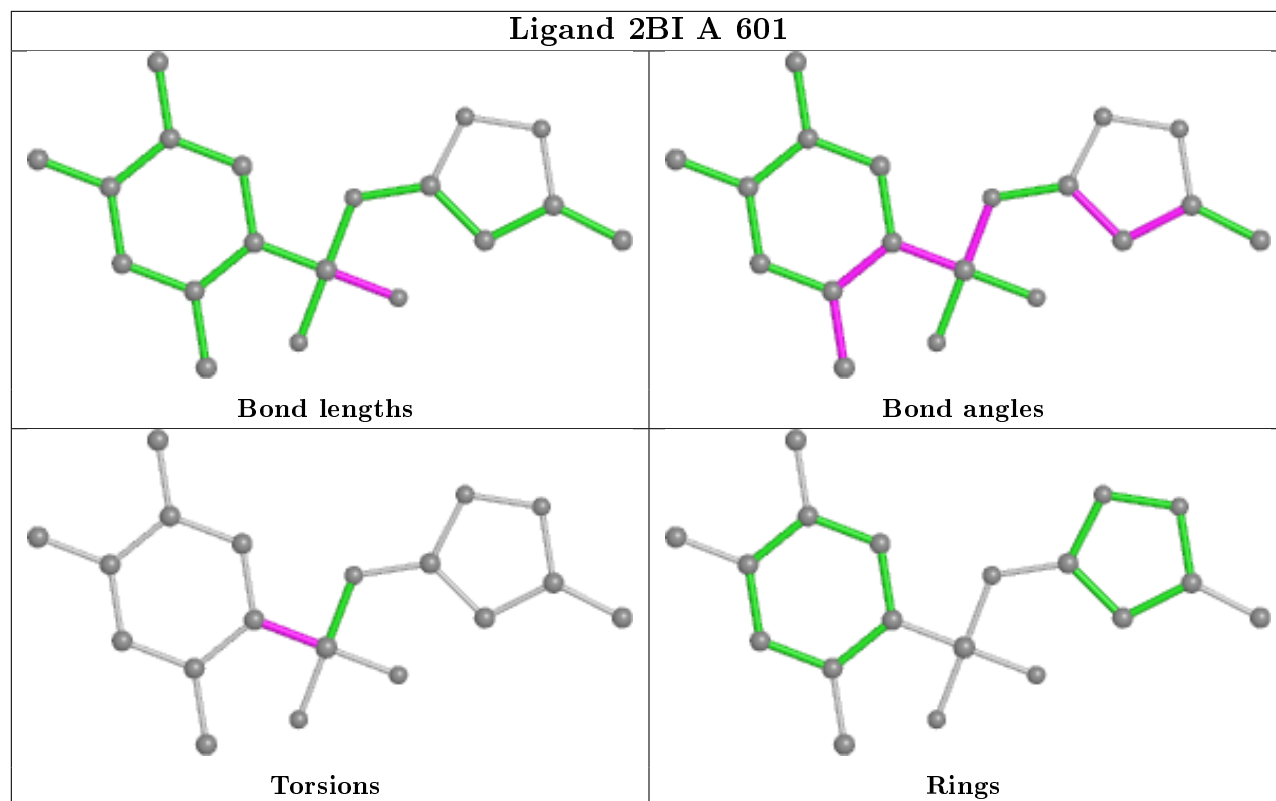
1 monomer is involved in 9 short contacts:

Mol	Chain	Res	Type	Clashes	Symm-Clashes
2	A	602	2BI	9	0

The following is a two-dimensional graphical depiction of Mogul quality analysis of bond lengths, bond angles, torsion angles, and ring geometry for all instances of the Ligand of Interest. In addition, ligands with molecular weight > 250 and outliers as shown on the validation Tables will also be included. For torsion angles, if less than 5% of the Mogul distribution of torsion angles is within 10 degrees of the torsion angle in question, then that torsion angle is considered an outlier. Any bond that is central to one or more torsion angles identified as an outlier by Mogul will be highlighted in the graph. For rings, the root-mean-square deviation (RMSD) between the ring

in question and similar rings identified by Mogul is calculated over all ring torsion angles. If the average RMSD is greater than 60 degrees and the minimal RMSD between the ring in question and any Mogul-identified rings is also greater than 60 degrees, then that ring is considered an outlier. The outliers are highlighted in purple. The color gray indicates Mogul did not find sufficient equivalents in the CSD to analyse the geometry.





5.7 Other polymers [i](#)

There are no such residues in this entry.

5.8 Polymer linkage issues [i](#)

There are no chain breaks in this entry.

6 Fit of model and data ⓘ

6.1 Protein, DNA and RNA chains ⓘ

In the following table, the column labelled ‘#RSRZ> 2’ contains the number (and percentage) of RSRZ outliers, followed by percent RSRZ outliers for the chain as percentile scores relative to all X-ray entries and entries of similar resolution. The OWAB column contains the minimum, median, 95th percentile and maximum values of the occupancy-weighted average B-factor per residue. The column labelled ‘Q< 0.9’ lists the number of (and percentage) of residues with an average occupancy less than 0.9.

Mol	Chain	Analysed	<RSRZ>	#RSRZ>2	OWAB(Å ²)	Q<0.9
1	A	559/576 (97%)	-0.01	14 (2%) 57 55	22, 34, 59, 91	0
1	B	558/576 (96%)	0.28	32 (5%) 23 22	23, 41, 72, 87	0
All	All	1117/1152 (96%)	0.14	46 (4%) 37 35	22, 37, 68, 91	0

All (46) RSRZ outliers are listed below:

Mol	Chain	Res	Type	RSRZ
1	B	548	SER	6.7
1	B	546	ASP	5.8
1	B	24	ASN	5.4
1	B	531	ARG	5.1
1	B	26	LEU	5.1
1	B	16	ALA	4.8
1	B	14	CYS	4.5
1	B	27	SER	4.4
1	B	563	SER	4.4
1	B	23	ILE	4.3
1	B	28	ASN	4.2
1	B	544	GLN	4.0
1	A	544	GLN	3.8
1	A	531	ARG	3.5
1	B	15	ALA	3.4
1	B	545	LEU	3.4
1	A	546	ASP	3.2
1	B	25	PRO	3.2
1	B	153	GLY	3.2
1	A	118	HIS	3.0
1	B	542	ALA	3.0
1	B	212	LYS	2.9
1	B	534	LEU	2.9
1	A	563	SER	2.8

Continued on next page...

Continued from previous page...

Mol	Chain	Res	Type	RSRZ
1	B	543	SER	2.8
1	B	57	LEU	2.8
1	A	545	LEU	2.7
1	B	330	GLN	2.7
1	A	548	SER	2.6
1	A	14	CYS	2.5
1	A	543	SER	2.5
1	B	110	ASN	2.5
1	A	15	ALA	2.4
1	A	540	PRO	2.4
1	A	16	ALA	2.3
1	B	436	GLN	2.3
1	B	547	LEU	2.3
1	B	514	GLN	2.3
1	B	86	GLU	2.2
1	A	541	ALA	2.2
1	B	22	PRO	2.2
1	B	29	SER	2.2
1	B	95	HIS	2.1
1	B	402	HIS	2.1
1	A	535	LYS	2.1
1	B	448	TYR	2.0

6.2 Non-standard residues in protein, DNA, RNA chains [i](#)

There are no non-standard protein/DNA/RNA residues in this entry.

6.3 Carbohydrates [i](#)

There are no carbohydrates in this entry.

6.4 Ligands [i](#)

In the following table, the Atoms column lists the number of modelled atoms in the group and the number defined in the chemical component dictionary. The B-factors column lists the minimum, median, 95th percentile and maximum values of B factors of atoms in the group. The column labelled 'Q< 0.9' lists the number of atoms with occupancy less than 0.9.

Mol	Type	Chain	Res	Atoms	RSCC	RSR	B-factors(Å ²)	Q<0.9
2	2BI	A	602	19/19	0.70	0.44	50,50,50,50	0

Continued on next page...

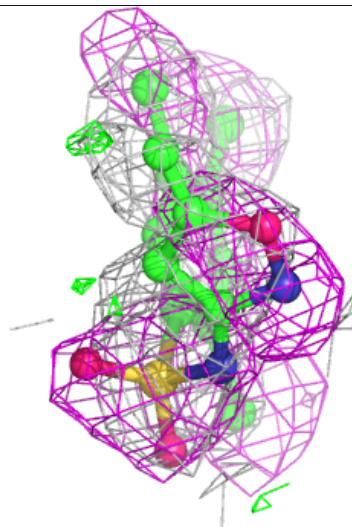
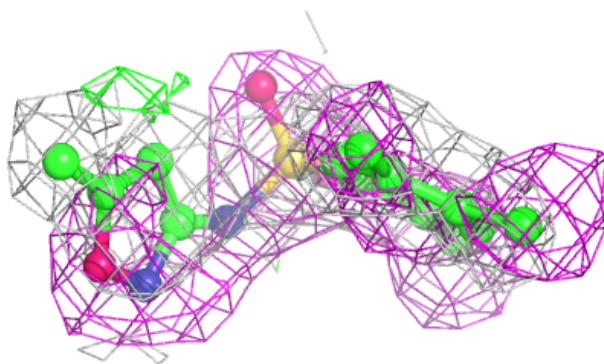
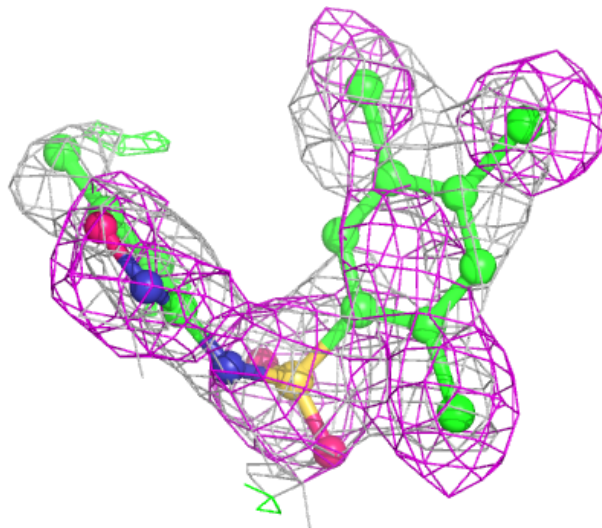
Continued from previous page...

Mol	Type	Chain	Res	Atoms	RSCC	RSR	B-factors(\AA^2)	Q<0.9
2	2BI	A	601	19/19	0.89	0.14	50,50,50,50	0

The following is a graphical depiction of the model fit to experimental electron density of all instances of the Ligand of Interest. In addition, ligands with molecular weight > 250 and outliers as shown on the geometry validation Tables will also be included. Each fit is shown from different orientation to approximate a three-dimensional view.

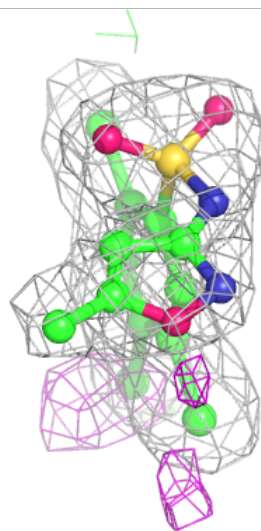
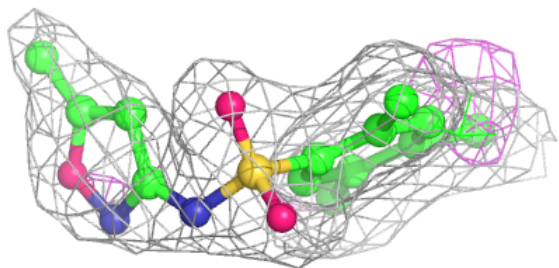
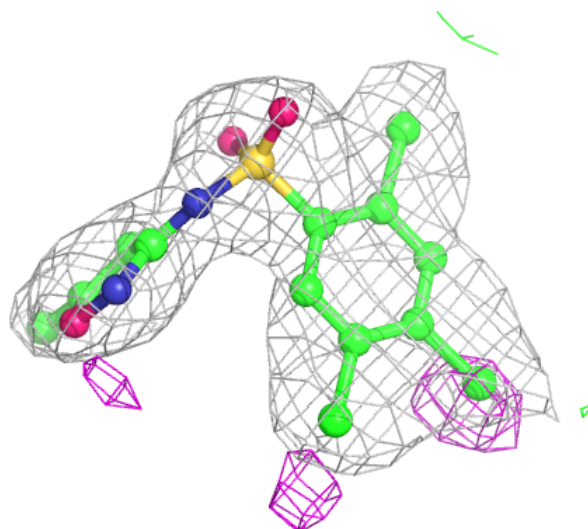
Electron density around 2BI A 602:

2mF_o-DF_c (at 0.7 rmsd) in gray
mF_o-DF_c (at 3 rmsd) in purple (negative)
and green (positive)



Electron density around 2BI A 601:

2mF_o-DF_c (at 0.7 rmsd) in gray
mF_o-DF_c (at 3 rmsd) in purple (negative)
and green (positive)



6.5 Other polymers ⓘ

There are no such residues in this entry.