



Full wwPDB X-ray Structure Validation Report ⓘ

May 26, 2020 – 04:15 am BST

PDB ID : 2J0P
Title : Structure of the haem-chaperone Proteobacteria-protein HemS
Authors : Schneider, S.; Sharp, K.H.; Barker, P.D.; Paoli, M.
Deposited on : 2006-08-04
Resolution : 1.70 Å(reported)

This is a Full wwPDB X-ray Structure Validation Report for a publicly released PDB entry.

We welcome your comments at validation@mail.wwpdb.org

A user guide is available at

<https://www.wwpdb.org/validation/2017/XrayValidationReportHelp>

with specific help available everywhere you see the ⓘ symbol.

The following versions of software and data (see [references ⓘ](#)) were used in the production of this report:

MolProbity : 4.02b-467
Mogul : 1.8.5 (274361), CSD as541be (2020)
Xtriage (Phenix) : 1.13
EDS : 2.11
buster-report : 1.1.7 (2018)
Percentile statistics : 20191225.v01 (using entries in the PDB archive December 25th 2019)
Refmac : 5.8.0158
CCP4 : 7.0.044 (Gargrove)
Ideal geometry (proteins) : Engh & Huber (2001)
Ideal geometry (DNA, RNA) : Parkinson et al. (1996)
Validation Pipeline (wwPDB-VP) : 2.11

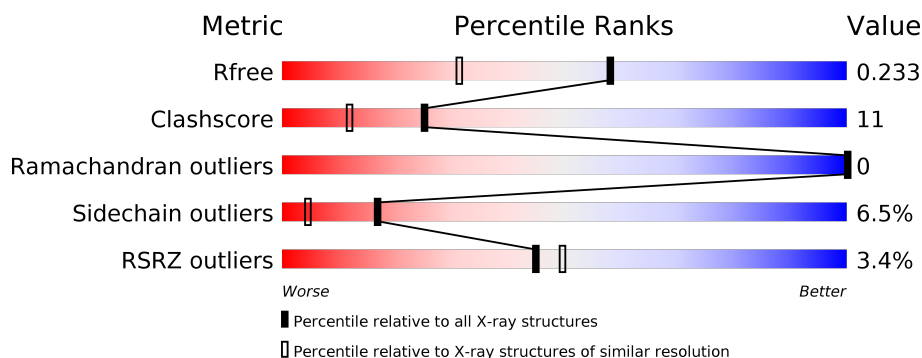
1 Overall quality at a glance

The following experimental techniques were used to determine the structure:

X-RAY DIFFRACTION

The reported resolution of this entry is 1.70 Å.

Percentile scores (ranging between 0-100) for global validation metrics of the entry are shown in the following graphic. The table shows the number of entries on which the scores are based.



Metric	Whole archive (#Entries)	Similar resolution (#Entries, resolution range(Å))
R_{free}	130704	4298 (1.70-1.70)
Clashscore	141614	4695 (1.70-1.70)
Ramachandran outliers	138981	4610 (1.70-1.70)
Sidechain outliers	138945	4610 (1.70-1.70)
RSRZ outliers	127900	4222 (1.70-1.70)

The table below summarises the geometric issues observed across the polymeric chains and their fit to the electron density. The red, orange, yellow and green segments on the lower bar indicate the fraction of residues that contain outliers for ≥ 3 , 2, 1 and 0 types of geometric quality criteria respectively. A grey segment represents the fraction of residues that are not modelled. The numeric value for each fraction is indicated below the corresponding segment, with a dot representing fractions $\leq 5\%$. The upper red bar (where present) indicates the fraction of residues that have poor fit to the electron density. The numeric value is given above the bar.

Mol	Chain	Length	Quality of chain
1	A	345	<div> <div>3%</div> <div>77%</div> <div>14%</div> <div>• 5%</div> </div>

The following table lists non-polymeric compounds, carbohydrate monomers and non-standard residues in protein, DNA, RNA chains that are outliers for geometric or electron-density-fit criteria:

Mol	Type	Chain	Res	Chirality	Geometry	Clashes	Electron density
4	MLI	A	1344	-	-	X	-

2 Entry composition [i](#)

There are 6 unique types of molecules in this entry. The entry contains 2914 atoms, of which 0 are hydrogens and 0 are deuteriums.

In the tables below, the ZeroOcc column contains the number of atoms modelled with zero occupancy, the AltConf column contains the number of residues with at least one atom in alternate conformation and the Trace column contains the number of residues modelled with at most 2 atoms.

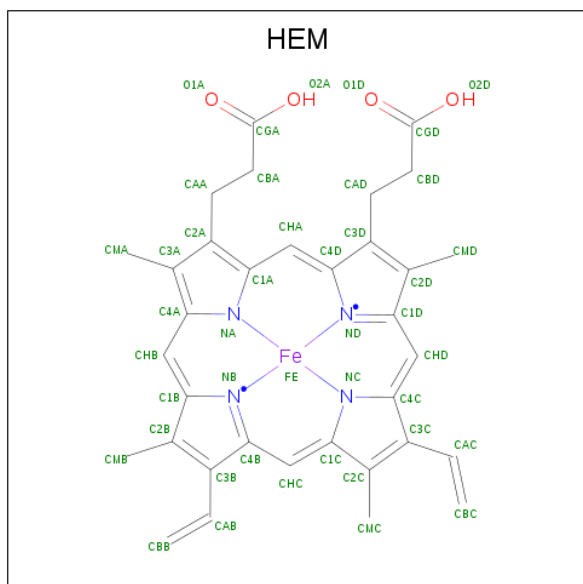
- Molecule 1 is a protein called HEMIN TRANSPORT PROTEIN HEMS.

Mol	Chain	Residues	Atoms					ZeroOcc	AltConf	Trace
1	A	328	Total	C	N	O	S	35	4	0
			2667	1674	480	505	8			

There are 3 discrepancies between the modelled and reference sequences:

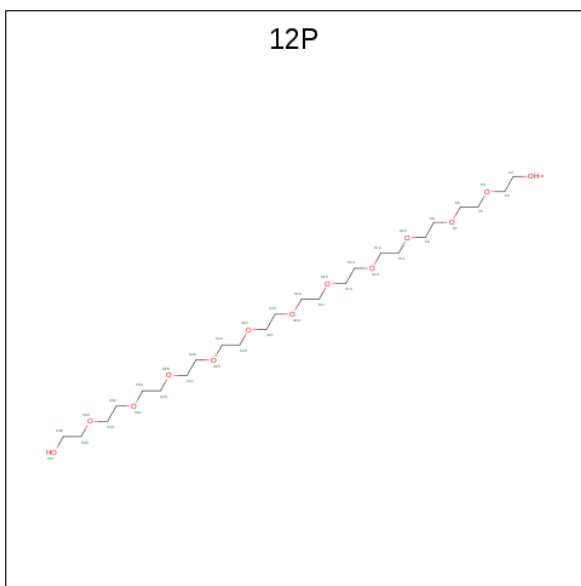
Chain	Residue	Modelled	Actual	Comment	Reference
A	162	ASN	ILE	conflict	UNP P31517
A	197	GLU	GLN	conflict	UNP P31517
A	334	GLN	GLU	conflict	UNP P31517

- Molecule 2 is PROTOPORPHYRIN IX CONTAINING FE (three-letter code: HEM) (formula: $C_{34}H_{32}FeN_4O_4$).



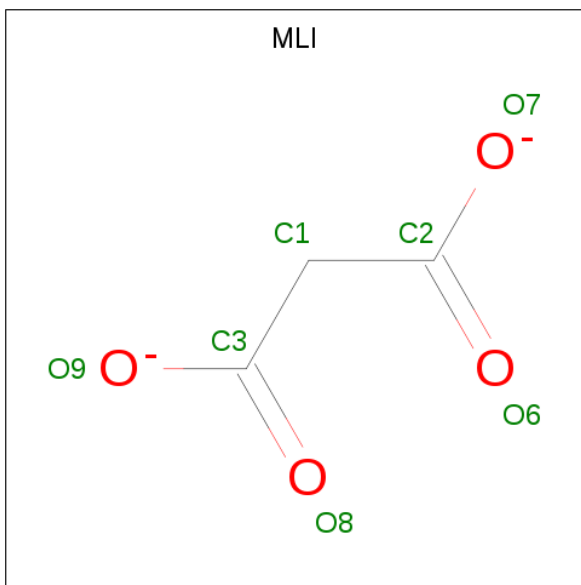
Mol	Chain	Residues	Atoms					ZeroOcc	AltConf
2	A	1	Total	C	Fe	N	O	0	0
			43	34	1	4	4		

- Molecule 3 is DODECAETHYLENE GLYCOL (three-letter code: 12P) (formula: $C_{24}H_{50}O_{13}$).



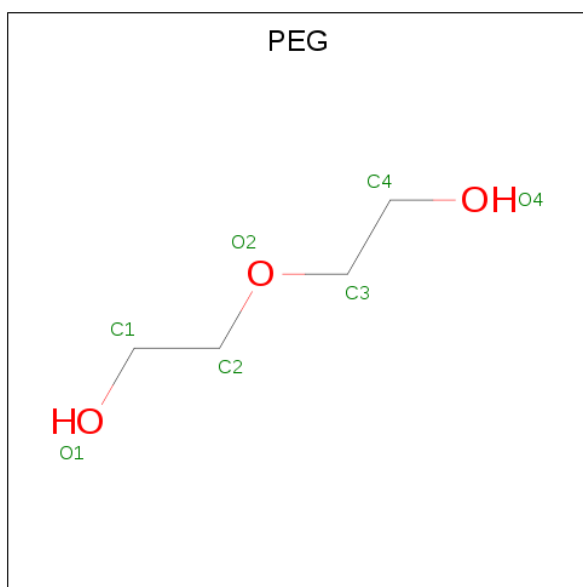
Mol	Chain	Residues	Atoms			ZeroOcc	AltConf
3	A	1	Total	C	O	0	0
			21	14	7		

- Molecule 4 is MALONATE ION (three-letter code: MLI) (formula: $C_3H_2O_4$).



Mol	Chain	Residues	Atoms			ZeroOcc	AltConf
4	A	1	Total	C	O	0	0
			7	3	4		

- Molecule 5 is DI(HYDROXYETHYL)ETHER (three-letter code: PEG) (formula: $C_4H_{10}O_3$).



Mol	Chain	Residues	Atoms			ZeroOcc	AltConf
5	A	1	Total	C	O	0	0
			7	4	3		

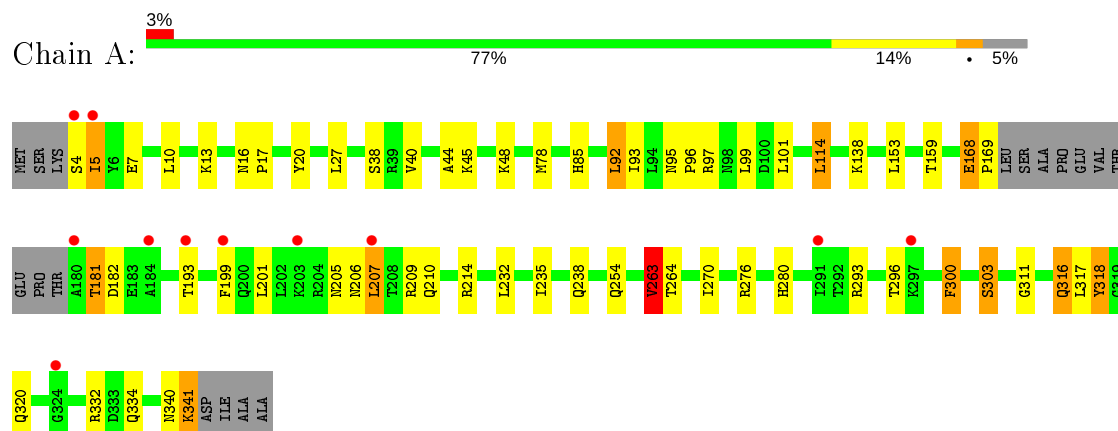
- Molecule 6 is water.

Mol	Chain	Residues	Atoms		ZeroOcc	AltConf
6	A	169	Total	O	0	0
			169	169		

3 Residue-property plots [i](#)

These plots are drawn for all protein, RNA and DNA chains in the entry. The first graphic for a chain summarises the proportions of the various outlier classes displayed in the second graphic. The second graphic shows the sequence view annotated by issues in geometry and electron density. Residues are color-coded according to the number of geometric quality criteria for which they contain at least one outlier: green = 0, yellow = 1, orange = 2 and red = 3 or more. A red dot above a residue indicates a poor fit to the electron density ($RSRZ > 2$). Stretches of 2 or more consecutive residues without any outlier are shown as a green connector. Residues present in the sample, but not in the model, are shown in grey.

- Molecule 1: HEMIN TRANSPORT PROTEIN HEMS



4 Data and refinement statistics

Property	Value	Source
Space group	I 2 2 2	Depositor
Cell constants a, b, c, α , β , γ	74.94Å 77.59Å 114.29Å 90.00° 90.00° 90.00°	Depositor
Resolution (Å)	30.00 – 1.70 26.95 – 1.70	Depositor EDS
% Data completeness (in resolution range)	97.4 (30.00-1.70) 97.4 (26.95-1.70)	Depositor EDS
R_{merge}	0.08	Depositor
R_{sym}	(Not available)	Depositor
$\langle I/\sigma(I) \rangle$ ¹	1.95 (at 1.70Å)	Xtriage
Refinement program	REFMAC 5.2.0019	Depositor
R, R_{free}	0.192 , 0.221 0.204 , 0.233	Depositor DCC
R_{free} test set	1807 reflections (5.01%)	wwPDB-VP
Wilson B-factor (Å ²)	22.4	Xtriage
Anisotropy	0.047	Xtriage
Bulk solvent k_{sol} (e/Å ³), B_{sol} (Å ²)	0.35 , 48.0	EDS
L-test for twinning ²	$\langle L \rangle = 0.48$, $\langle L^2 \rangle = 0.31$	Xtriage
Estimated twinning fraction	0.019 for k,h,-l	Xtriage
F_o, F_c correlation	0.96	EDS
Total number of atoms	2914	wwPDB-VP
Average B, all atoms (Å ²)	30.0	wwPDB-VP

Xtriage's analysis on translational NCS is as follows: *The largest off-origin peak in the Patterson function is 5.60% of the height of the origin peak. No significant pseudotranslation is detected.*

¹Intensities estimated from amplitudes.

²Theoretical values of $\langle |L| \rangle$, $\langle L^2 \rangle$ for acentric reflections are 0.5, 0.333 respectively for untwinned datasets, and 0.375, 0.2 for perfectly twinned datasets.

5 Model quality

5.1 Standard geometry

Bond lengths and bond angles in the following residue types are not validated in this section: 12P, HEM, PEG, MLI

The Z score for a bond length (or angle) is the number of standard deviations the observed value is removed from the expected value. A bond length (or angle) with $|Z| > 5$ is considered an outlier worth inspection. RMSZ is the root-mean-square of all Z scores of the bond lengths (or angles).

Mol	Chain	Bond lengths		Bond angles	
		RMSZ	$\# Z > 5$	RMSZ	$\# Z > 5$
1	A	1.60	8/2728 (0.3%)	0.87	1/3697 (0.0%)

All (8) bond length outliers are listed below:

Mol	Chain	Res	Type	Atoms	Z	Observed(Å)	Ideal(Å)
1	A	13	LYS	CD-CE	-7.15	1.33	1.51
1	A	263	VAL	CB-CG1	-6.32	1.39	1.52
1	A	318	TYR	CD2-CE2	-6.14	1.30	1.39
1	A	303[A]	SER	CB-OG	-5.76	1.34	1.42
1	A	303[B]	SER	CB-OG	-5.76	1.34	1.42
1	A	300	PHE	CD2-CE2	-5.56	1.28	1.39
1	A	293	ARG	CB-CG	-5.54	1.37	1.52
1	A	280	HIS	C-O	-5.11	1.13	1.23

All (1) bond angle outliers are listed below:

Mol	Chain	Res	Type	Atoms	Z	Observed(°)	Ideal(°)
1	A	114	LEU	CB-CG-CD2	6.46	121.99	111.00

There are no chirality outliers.

There are no planarity outliers.

5.2 Too-close contacts

In the following table, the Non-H and H(model) columns list the number of non-hydrogen atoms and hydrogen atoms in the chain respectively. The H(added) column lists the number of hydrogen atoms added and optimized by MolProbity. The Clashes column lists the number of clashes within the asymmetric unit, whereas Symm-Clashes lists symmetry related clashes.

Mol	Chain	Non-H	H(model)	H(added)	Clashes	Symm-Clashes
1	A	2667	0	2604	54	0
2	A	43	0	30	1	0
3	A	21	0	24	10	0
4	A	7	0	2	2	0
5	A	7	0	10	3	0
6	A	169	0	0	2	1
All	All	2914	0	2670	57	1

The all-atom clashscore is defined as the number of clashes found per 1000 atoms (including hydrogen atoms). The all-atom clashscore for this structure is 11.

All (57) close contacts within the same asymmetric unit are listed below, sorted by their clash magnitude.

Atom-1	Atom-2	Interatomic distance (Å)	Clash overlap (Å)
1:A:340:ASN:O	1:A:341:LYS:HB2	1.70	0.92
1:A:45:LYS:CE	3:A:1343:12P:H211	2.03	0.88
1:A:45:LYS:HE3	3:A:1343:12P:H211	1.61	0.82
1:A:300:PHE:H	4:A:1344:MLI:H12	1.43	0.82
1:A:235:ILE:HG21	1:A:334:GLN:HG2	1.65	0.79
1:A:20:TYR:HB3	5:A:1345:PEG:H11	1.71	0.73
1:A:5:ILE:HG12	1:A:38:SER:CB	2.18	0.73
3:A:1343:12P:C35	3:A:1343:12P:C17	2.68	0.71
1:A:340:ASN:O	1:A:341:LYS:CB	2.39	0.67
3:A:1343:12P:C35	3:A:1343:12P:H172	2.26	0.66
1:A:45:LYS:HE3	3:A:1343:12P:H181	1.79	0.64
1:A:201:LEU:C	1:A:201:LEU:HD23	2.20	0.62
1:A:235:ILE:CG2	1:A:334:GLN:HG2	2.29	0.62
3:A:1343:12P:H171	3:A:1343:12P:C35	2.30	0.59
1:A:138:LYS:HD2	5:A:1345:PEG:H41	1.86	0.58
1:A:209[B]:ARG:NH1	6:A:2111:HOH:O	2.35	0.56
1:A:45:LYS:HE3	3:A:1343:12P:C21	2.35	0.54
1:A:5:ILE:HG12	1:A:38:SER:HB3	1.91	0.53
1:A:209[A]:ARG:NH2	6:A:2111:HOH:O	2.43	0.51
1:A:263:VAL:HG23	1:A:270:ILE:HD11	1.93	0.51
1:A:205:ASN:HB2	1:A:207:LEU:HD22	1.93	0.50
1:A:168:GLU:CB	1:A:169:PRO:CD	2.88	0.49
1:A:181:THR:O	1:A:182:ASP:C	2.49	0.49
1:A:45:LYS:HE2	3:A:1343:12P:H231	1.95	0.49
1:A:5:ILE:HG12	1:A:38:SER:HB2	1.93	0.48
1:A:40:VAL:HA	1:A:44:ALA:O	2.14	0.48
1:A:168:GLU:HB2	1:A:169:PRO:HD2	1.95	0.48
1:A:206:ASN:CG	1:A:206:ASN:O	2.53	0.47

Continued on next page...

Continued from previous page...

Atom-1	Atom-2	Interatomic distance (Å)	Clash overlap (Å)
1:A:168:GLU:CB	1:A:169:PRO:HD2	2.45	0.46
1:A:300:PHE:HD1	4:A:1344:MLI:C2	2.29	0.46
1:A:48:LYS:HG3	1:A:159:THR:CG2	2.46	0.45
1:A:201:LEU:O	1:A:201:LEU:HD23	2.16	0.45
1:A:168:GLU:HB2	1:A:169:PRO:CD	2.45	0.45
1:A:101:LEU:HD21	1:A:254:GLN:HE21	1.82	0.45
1:A:92:LEU:HD22	2:A:1342:HEM:HMC3	1.98	0.44
1:A:303[A]:SER:HB3	1:A:318:TYR:CE2	2.52	0.44
1:A:4:SER:O	1:A:7:GLU:HB2	2.18	0.44
1:A:5:ILE:HG13	1:A:5:ILE:O	2.05	0.44
1:A:210:GLN:O	1:A:214:ARG:HG3	2.19	0.43
1:A:316:GLN:C	1:A:317:LEU:HD12	2.38	0.43
1:A:78[B]:MET:HB3	1:A:78[B]:MET:HE2	1.82	0.43
1:A:210:GLN:HE22	1:A:311:GLY:HA2	1.83	0.43
1:A:78[B]:MET:CE	1:A:276:ARG:NH1	2.82	0.43
1:A:303[A]:SER:HB2	1:A:317:LEU:O	2.19	0.43
1:A:45:LYS:CE	3:A:1343:12P:C21	2.87	0.43
1:A:27:LEU:HA	1:A:27:LEU:HD23	1.92	0.42
1:A:45:LYS:NZ	3:A:1343:12P:H211	2.32	0.42
1:A:153:LEU:HD23	1:A:153:LEU:C	2.39	0.42
1:A:85:HIS:HB2	1:A:92:LEU:HG	2.02	0.41
1:A:138:LYS:HZ1	5:A:1345:PEG:C4	2.32	0.41
1:A:317:LEU:N	1:A:317:LEU:HD12	2.35	0.41
1:A:96:PRO:O	1:A:97:ARG:HB2	2.21	0.41
1:A:16:ASN:N	1:A:17:PRO:HD3	2.35	0.41
1:A:92:LEU:HD23	1:A:92:LEU:N	2.36	0.40
1:A:182:ASP:OD2	1:A:182:ASP:N	2.54	0.40
1:A:232[A]:LEU:HA	1:A:232[A]:LEU:HD12	1.93	0.40
1:A:95:ASN:HB2	1:A:99:LEU:O	2.22	0.40

All (1) symmetry-related close contacts are listed below. The label for Atom-2 includes the symmetry operator and encoded unit-cell translations to be applied.

Atom-1	Atom-2	Interatomic distance (Å)	Clash overlap (Å)
6:A:2033:HOH:O	6:A:2069:HOH:O[4_565]	2.14	0.06

5.3 Torsion angles

5.3.1 Protein backbone

In the following table, the Percentiles column shows the percent Ramachandran outliers of the chain as a percentile score with respect to all X-ray entries followed by that with respect to entries of similar resolution.

The Analysed column shows the number of residues for which the backbone conformation was analysed, and the total number of residues.

Mol	Chain	Analysed	Favoured	Allowed	Outliers	Percentiles	
1	A	328/345 (95%)	319 (97%)	9 (3%)	0	100	100

There are no Ramachandran outliers to report.

5.3.2 Protein sidechains

In the following table, the Percentiles column shows the percent sidechain outliers of the chain as a percentile score with respect to all X-ray entries followed by that with respect to entries of similar resolution.

The Analysed column shows the number of residues for which the sidechain conformation was analysed, and the total number of residues.

Mol	Chain	Analysed	Rotameric	Outliers	Percentiles	
1	A	282/292 (97%)	264 (94%)	18 (6%)	17	5

All (18) residues with a non-rotameric sidechain are listed below:

Mol	Chain	Res	Type
1	A	5	ILE
1	A	10	LEU
1	A	92	LEU
1	A	93	ILE
1	A	114	LEU
1	A	168	GLU
1	A	181	THR
1	A	193	THR
1	A	199	PHE
1	A	207	LEU
1	A	238	GLN
1	A	263	VAL
1	A	264	THR

Continued on next page...

Continued from previous page...

Mol	Chain	Res	Type
1	A	296	THR
1	A	316	GLN
1	A	320	GLN
1	A	332	ARG
1	A	341	LYS

Some sidechains can be flipped to improve hydrogen bonding and reduce clashes. All (9) such sidechains are listed below:

Mol	Chain	Res	Type
1	A	77	GLN
1	A	84	GLN
1	A	127	GLN
1	A	210	GLN
1	A	226	ASN
1	A	254	GLN
1	A	313	GLN
1	A	316	GLN
1	A	320	GLN

5.3.3 RNA [i](#)

There are no RNA molecules in this entry.

5.4 Non-standard residues in protein, DNA, RNA chains [i](#)

There are no non-standard protein/DNA/RNA residues in this entry.

5.5 Carbohydrates [i](#)

There are no carbohydrates in this entry.

5.6 Ligand geometry [i](#)

4 ligands are modelled in this entry.

In the following table, the Counts columns list the number of bonds (or angles) for which Mogul statistics could be retrieved, the number of bonds (or angles) that are observed in the model and the number of bonds (or angles) that are defined in the Chemical Component Dictionary. The Link column lists molecule types, if any, to which the group is linked. The Z score for a bond

length (or angle) is the number of standard deviations the observed value is removed from the expected value. A bond length (or angle) with $|Z| > 2$ is considered an outlier worth inspection. RMSZ is the root-mean-square of all Z scores of the bond lengths (or angles).

Mol	Type	Chain	Res	Link	Bond lengths			Bond angles		
					Counts	RMSZ	$\# Z > 2$	Counts	RMSZ	$\# Z > 2$
3	12P	A	1343	-	20,20,36	0.45	0	19,19,35	0.69	0
2	HEM	A	1342	1	27,50,50	2.28	8 (29%)	17,82,82	1.86	3 (17%)
5	PEG	A	1345	-	6,6,6	0.43	0	5,5,5	0.54	0
4	MLI	A	1344	-	0,6,6	0.00	-	0,7,7	0.00	-

In the following table, the Chirals column lists the number of chiral outliers, the number of chiral centers analysed, the number of these observed in the model and the number defined in the Chemical Component Dictionary. Similar counts are reported in the Torsion and Rings columns. '-' means no outliers of that kind were identified.

Mol	Type	Chain	Res	Link	Chirals	Torsions	Rings
3	12P	A	1343	-	-	8/18/18/34	-
2	HEM	A	1342	1	-	0/6/54/54	-
5	PEG	A	1345	-	-	3/4/4/4	-
4	MLI	A	1344	-	-	0/0/4/4	-

All (8) bond length outliers are listed below:

Mol	Chain	Res	Type	Atoms	Z	Observed(Å)	Ideal(Å)
2	A	1342	HEM	C3D-C2D	5.11	1.52	1.37
2	A	1342	HEM	C3C-C2C	-4.57	1.34	1.40
2	A	1342	HEM	C3C-CAC	4.16	1.56	1.47
2	A	1342	HEM	C3B-C2B	-4.06	1.34	1.40
2	A	1342	HEM	C3B-CAB	3.60	1.55	1.47
2	A	1342	HEM	CAA-C2A	2.84	1.56	1.52
2	A	1342	HEM	CMA-C3A	2.38	1.56	1.51
2	A	1342	HEM	C1D-ND	2.03	1.40	1.36

All (3) bond angle outliers are listed below:

Mol	Chain	Res	Type	Atoms	Z	Observed(°)	Ideal(°)
2	A	1342	HEM	CBD-CAD-C3D	-4.87	103.51	112.48
2	A	1342	HEM	C1D-C2D-C3D	-3.11	104.83	107.00
2	A	1342	HEM	CMA-C3A-C4A	-2.62	124.44	128.46

There are no chirality outliers.

All (11) torsion outliers are listed below:

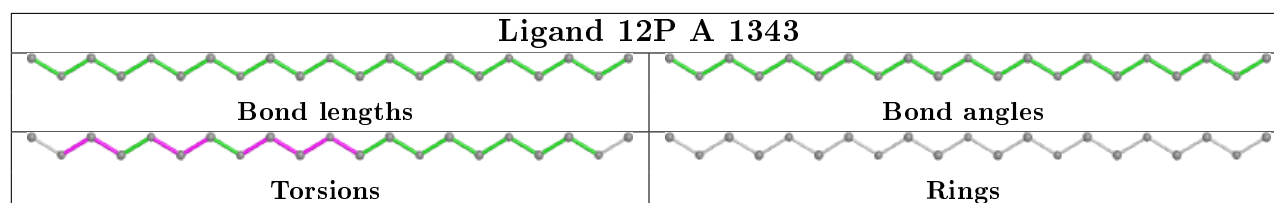
Mol	Chain	Res	Type	Atoms
5	A	1345	PEG	C4-C3-O2-C2
3	A	1343	12P	O19-C20-C21-O22
3	A	1343	12P	O16-C17-C18-O19
5	A	1345	PEG	O2-C3-C4-O4
3	A	1343	12P	C24-C23-O22-C21
3	A	1343	12P	C27-C26-O25-C24
5	A	1345	PEG	C1-C2-O2-C3
3	A	1343	12P	C23-C24-O25-C26
3	A	1343	12P	O22-C23-C24-O25
3	A	1343	12P	C21-C20-O19-C18
3	A	1343	12P	C18-C17-O16-C15

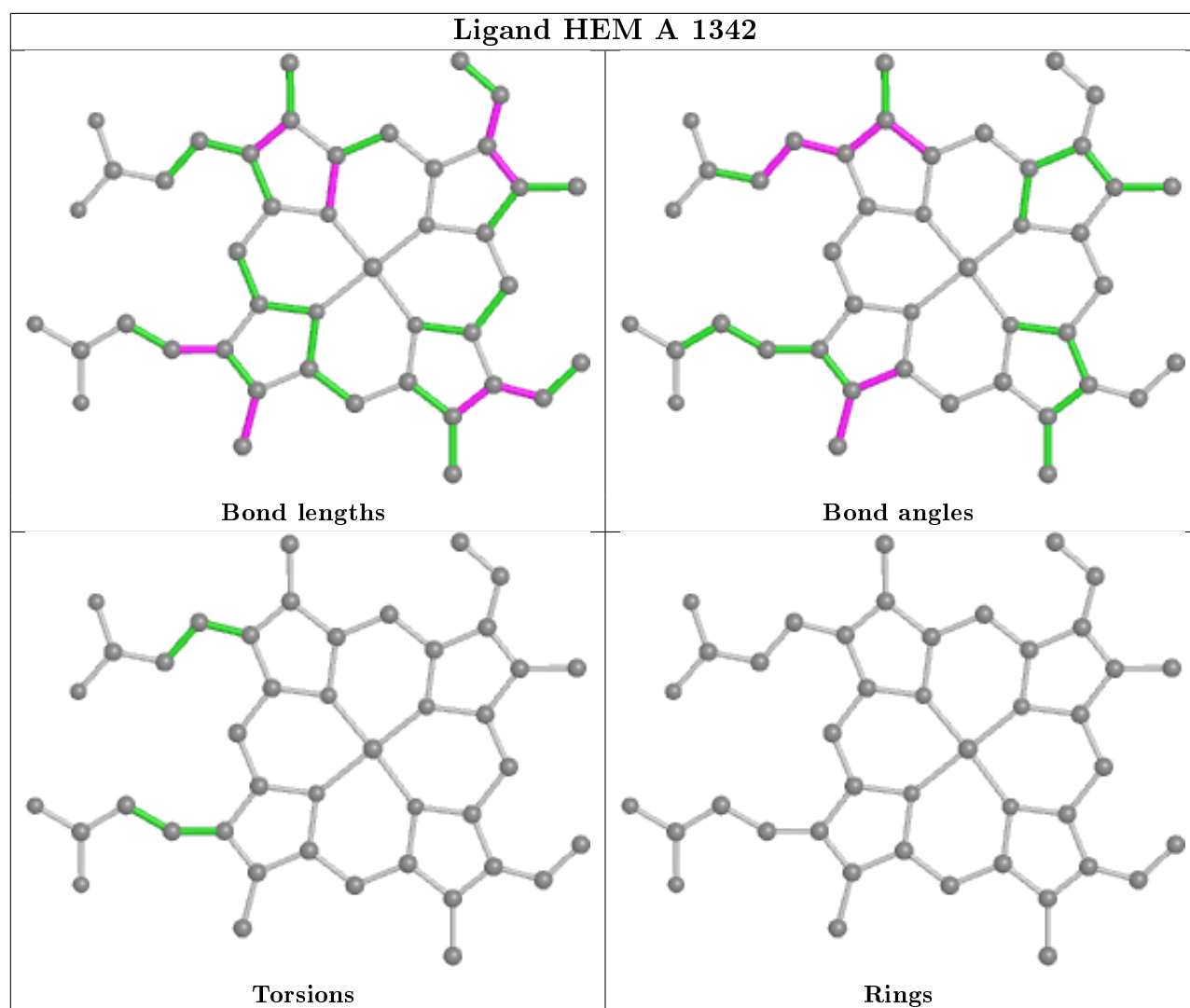
There are no ring outliers.

4 monomers are involved in 16 short contacts:

Mol	Chain	Res	Type	Clashes	Symm-Clashes
3	A	1343	12P	10	0
2	A	1342	HEM	1	0
5	A	1345	PEG	3	0
4	A	1344	MLI	2	0

The following is a two-dimensional graphical depiction of Mogul quality analysis of bond lengths, bond angles, torsion angles, and ring geometry for all instances of the Ligand of Interest. In addition, ligands with molecular weight > 250 and outliers as shown on the validation Tables will also be included. For torsion angles, if less than 5% of the Mogul distribution of torsion angles is within 10 degrees of the torsion angle in question, then that torsion angle is considered an outlier. Any bond that is central to one or more torsion angles identified as an outlier by Mogul will be highlighted in the graph. For rings, the root-mean-square deviation (RMSD) between the ring in question and similar rings identified by Mogul is calculated over all ring torsion angles. If the average RMSD is greater than 60 degrees and the minimal RMSD between the ring in question and any Mogul-identified rings is also greater than 60 degrees, then that ring is considered an outlier. The outliers are highlighted in purple. The color gray indicates Mogul did not find sufficient equivalents in the CSD to analyse the geometry.





5.7 Other polymers [i](#)

There are no such residues in this entry.

5.8 Polymer linkage issues [i](#)

There are no chain breaks in this entry.

6 Fit of model and data [i](#)

6.1 Protein, DNA and RNA chains [i](#)

In the following table, the column labelled ‘#RSRZ> 2’ contains the number (and percentage) of RSRZ outliers, followed by percent RSRZ outliers for the chain as percentile scores relative to all X-ray entries and entries of similar resolution. The OWAB column contains the minimum, median, 95th percentile and maximum values of the occupancy-weighted average B-factor per residue. The column labelled ‘Q< 0.9’ lists the number of (and percentage) of residues with an average occupancy less than 0.9.

Mol	Chain	Analysed	<RSRZ>	#RSRZ>2	OWAB(Å ²)	Q<0.9
1	A	328/345 (95%)	0.22	11 (3%) 45 50	16, 28, 46, 61	13 (3%)

All (11) RSRZ outliers are listed below:

Mol	Chain	Res	Type	RSRZ
1	A	207	LEU	4.1
1	A	180	ALA	3.2
1	A	184	ALA	2.9
1	A	199	PHE	2.8
1	A	193	THR	2.7
1	A	297	LYS	2.6
1	A	4	SER	2.4
1	A	5	ILE	2.4
1	A	324	GLY	2.3
1	A	291	ILE	2.1
1	A	203	LYS	2.0

6.2 Non-standard residues in protein, DNA, RNA chains [i](#)

There are no non-standard protein/DNA/RNA residues in this entry.

6.3 Carbohydrates [i](#)

There are no carbohydrates in this entry.

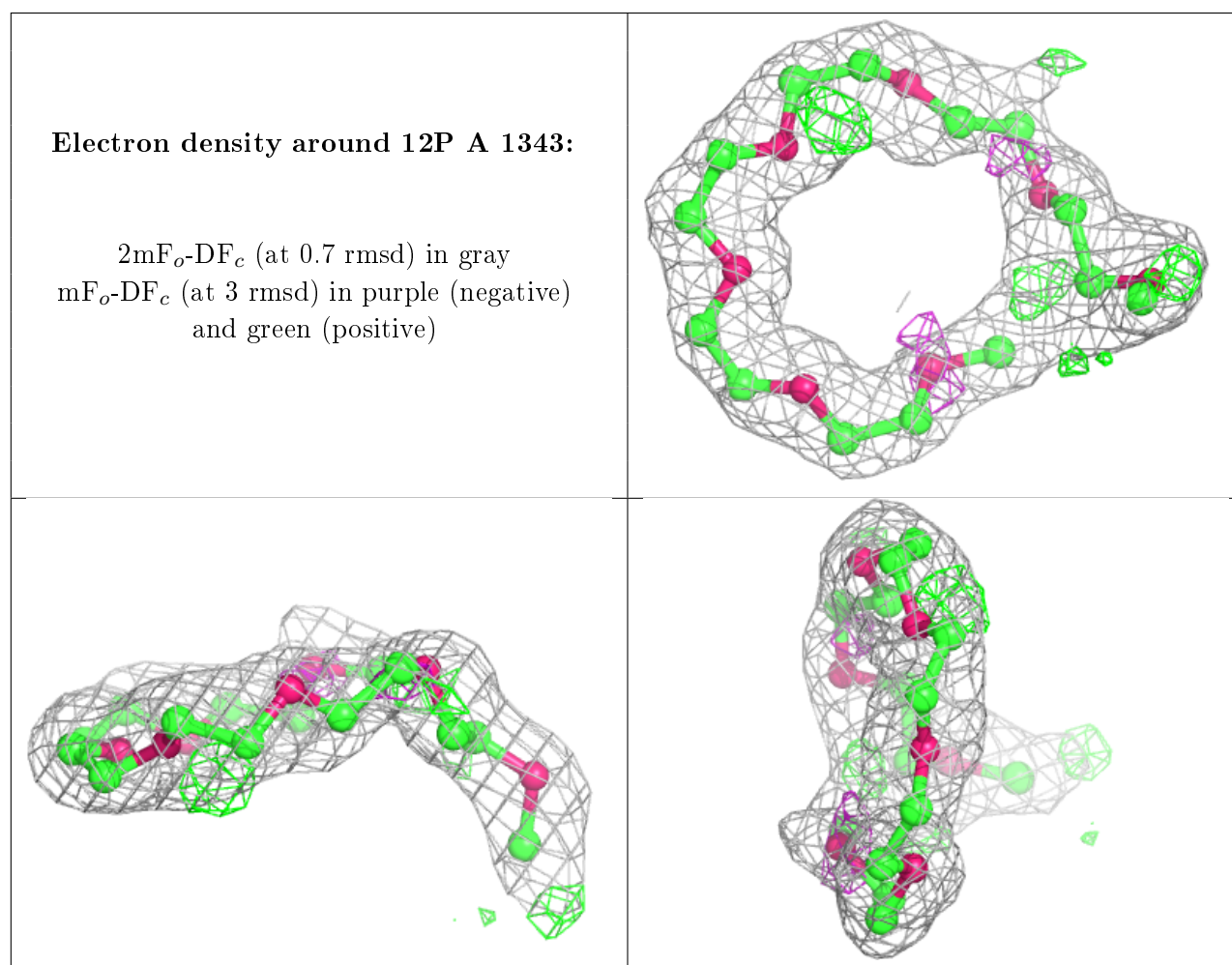
6.4 Ligands [i](#)

In the following table, the Atoms column lists the number of modelled atoms in the group and the number defined in the chemical component dictionary. The B-factors column lists the minimum,

median, 95th percentile and maximum values of B factors of atoms in the group. The column labelled 'Q<0.9' lists the number of atoms with occupancy less than 0.9.

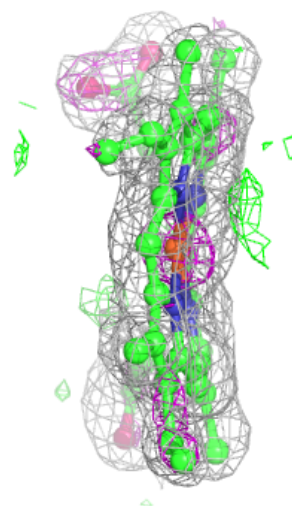
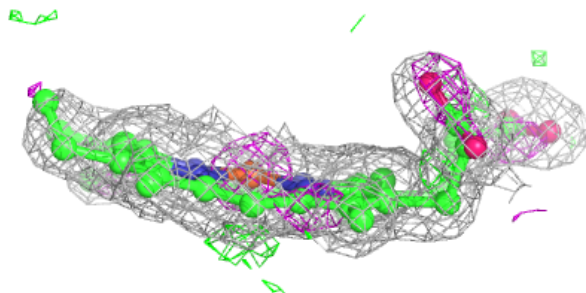
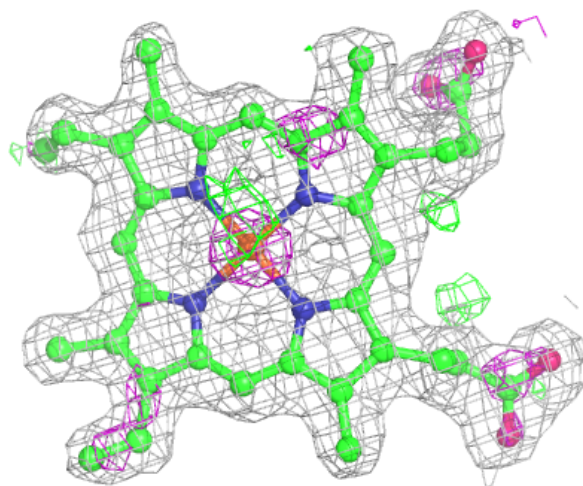
Mol	Type	Chain	Res	Atoms	RSCC	RSR	B-factors(\AA^2)	Q<0.9
5	PEG	A	1345	7/7	0.82	0.15	38,41,41,42	0
4	MLI	A	1344	7/7	0.82	0.17	50,50,50,50	0
3	12P	A	1343	21/37	0.88	0.12	29,41,45,45	0
2	HEM	A	1342	43/43	0.97	0.12	26,29,33,37	0

The following is a graphical depiction of the model fit to experimental electron density of all instances of the Ligand of Interest. In addition, ligands with molecular weight > 250 and outliers as shown on the geometry validation Tables will also be included. Each fit is shown from different orientation to approximate a three-dimensional view.



Electron density around HEM A 1342:

$2mF_o-DF_c$ (at 0.7 rmsd) in gray
 mF_o-DF_c (at 3 rmsd) in purple (negative)
and green (positive)



6.5 Other polymers ⓘ

There are no such residues in this entry.