



wwPDB X-ray Structure Validation Summary Report ⓘ

May 16, 2020 – 03:18 am BST

PDB ID : 2J0V
Title : The crystal structure of Arabidopsis thaliana RAC7-ROP9: the first RAS superfamily GTPase from the plant kingdom
Authors : Sormo, C.G.; Leiros, I.; Brembu, T.; Winge, P.; Os, V.; Bones, A.M.
Deposited on : 2006-08-07
Resolution : 1.78 Å(reported)

This is a wwPDB X-ray Structure Validation Summary Report for a publicly released PDB entry.

We welcome your comments at validation@mail.wwpdb.org

A user guide is available at

<https://www.wwpdb.org/validation/2017/XrayValidationReportHelp>

with specific help available everywhere you see the ⓘ symbol.

The following versions of software and data (see [references ⓘ](#)) were used in the production of this report:

MolProbity : 4.02b-467
Mogul : 1.8.5 (274361), CSD as541be (2020)
Xtriage (Phenix) : 1.13
EDS : 2.11
buster-report : 1.1.7 (2018)
Percentile statistics : 20191225.v01 (using entries in the PDB archive December 25th 2019)
Refmac : 5.8.0158
CCP4 : 7.0.044 (Gargrove)
Ideal geometry (proteins) : Engh & Huber (2001)
Ideal geometry (DNA, RNA) : Parkinson et al. (1996)
Validation Pipeline (wwPDB-VP) : 2.11

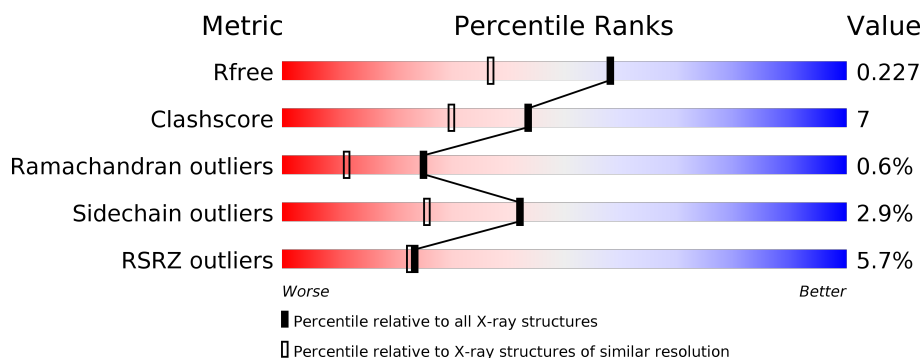
1 Overall quality at a glance ⓘ

The following experimental techniques were used to determine the structure:

X-RAY DIFFRACTION

The reported resolution of this entry is 1.78 Å.

Percentile scores (ranging between 0-100) for global validation metrics of the entry are shown in the following graphic. The table shows the number of entries on which the scores are based.



Metric	Whole archive (#Entries)	Similar resolution (#Entries, resolution range(Å))
R_{free}	130704	9185 (1.80-1.76)
Clashscore	141614	10184 (1.80-1.76)
Ramachandran outliers	138981	10051 (1.80-1.76)
Sidechain outliers	138945	10050 (1.80-1.76)
RSRZ outliers	127900	9032 (1.80-1.76)

The table below summarises the geometric issues observed across the polymeric chains and their fit to the electron density. The red, orange, yellow and green segments on the lower bar indicate the fraction of residues that contain outliers for ≥ 3 , 2, 1 and 0 types of geometric quality criteria respectively. A grey segment represents the fraction of residues that are not modelled. The numeric value for each fraction is indicated below the corresponding segment, with a dot representing fractions $\leq 5\%$. The upper red bar (where present) indicates the fraction of residues that have poor fit to the electron density. The numeric value is given above the bar.

Mol	Chain	Length	Quality of chain
1	A	212	<div> <div>4%</div> <div> <div></div> <div>68%</div> <div>16%</div> <div>16%</div> </div> </div>
1	B	212	<div> <div>3%</div> <div> <div></div> <div>73%</div> <div>11%</div> <div>13%</div> </div> </div>
1	C	212	<div> <div>5%</div> <div> <div></div> <div>64%</div> <div>11%</div> <div>25%</div> </div> </div>
1	D	212	<div> <div>7%</div> <div> <div></div> <div>73%</div> <div>10%</div> <div>16%</div> </div> </div>

2 Entry composition

There are 4 unique types of molecules in this entry. The entry contains 5787 atoms, of which 0 are hydrogens and 0 are deuteriums.

In the tables below, the ZeroOcc column contains the number of atoms modelled with zero occupancy, the AltConf column contains the number of residues with at least one atom in alternate conformation and the Trace column contains the number of residues modelled with at most 2 atoms.

- Molecule 1 is a protein called RAC-LIKE GTP-BINDING PROTEIN ARAC7.

Mol	Chain	Residues	Atoms					ZeroOcc	AltConf	Trace
1	A	178	Total	C	N	O	S	0	0	0
			1369	875	228	259	7			
1	B	184	Total	C	N	O	S	0	0	0
			1423	908	244	264	7			
1	C	159	Total	C	N	O	S	0	0	0
			1214	783	197	228	6			
1	D	178	Total	C	N	O	S	0	0	0
			1369	875	229	258	7			

There are 3 discrepancies between the modelled and reference sequences:

Chain	Residue	Modelled	Actual	Comment	Reference
A	3	VAL	ALA	engineered mutation	UNP O82480
B	3	VAL	ALA	engineered mutation	UNP O82480
D	3	VAL	ALA	engineered mutation	UNP O82480

- Molecule 2 is GUANOSINE-5'-DIPHOSPHATE (three-letter code: GDP) (formula: $C_{10}H_{15}N_5O_{11}P_2$).



Mol	Chain	Residues	Atoms					ZeroOcc	AltConf
2	A	1	Total	C	N	O	P	0	0
			28	10	5	11	2		
2	B	1	Total	C	N	O	P	0	0
			28	10	5	11	2		
2	C	1	Total	C	N	O	P	0	0
			28	10	5	11	2		
2	D	1	Total	C	N	O	P	0	0
			28	10	5	11	2		

- Molecule 3 is MAGNESIUM ION (three-letter code: MG) (formula: Mg).

Mol	Chain	Residues	Atoms		ZeroOcc	AltConf
3	B	1	Total	Mg	0	0
			1	1		
3	A	1	Total	Mg	0	0
			1	1		
3	D	1	Total	Mg	0	0
			1	1		
3	C	1	Total	Mg	0	0
			1	1		

- Molecule 4 is water.

Mol	Chain	Residues	Atoms		ZeroOcc	AltConf
4	A	74	Total	O	0	0
			74	74		

Continued on next page...

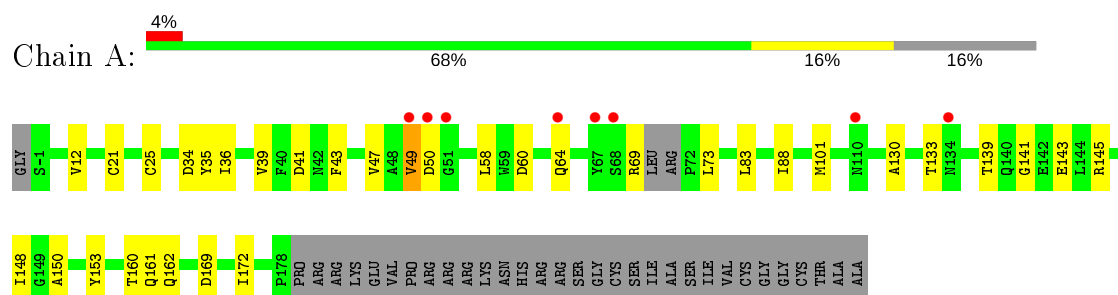
Continued from previous page...

Mol	Chain	Residues	Atoms		ZeroOcc	AltConf
4	B	97	Total 97	O 97	0	0
4	C	59	Total 59	O 59	0	0
4	D	66	Total 66	O 66	0	0

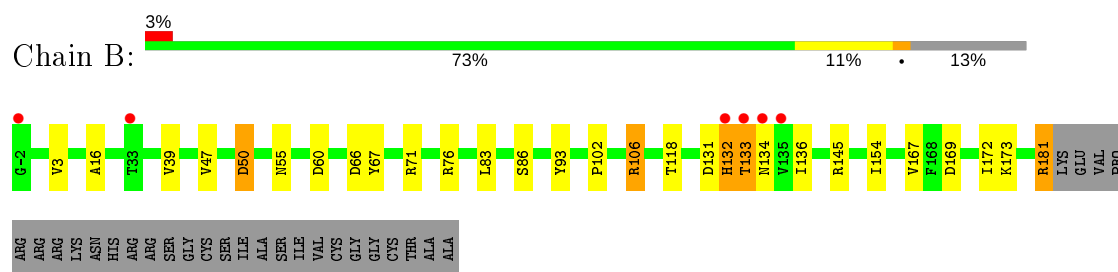
3 Residue-property plots [i](#)

These plots are drawn for all protein, RNA and DNA chains in the entry. The first graphic for a chain summarises the proportions of the various outlier classes displayed in the second graphic. The second graphic shows the sequence view annotated by issues in geometry and electron density. Residues are color-coded according to the number of geometric quality criteria for which they contain at least one outlier: green = 0, yellow = 1, orange = 2 and red = 3 or more. A red dot above a residue indicates a poor fit to the electron density ($RSRZ > 2$). Stretches of 2 or more consecutive residues without any outlier are shown as a green connector. Residues present in the sample, but not in the model, are shown in grey.

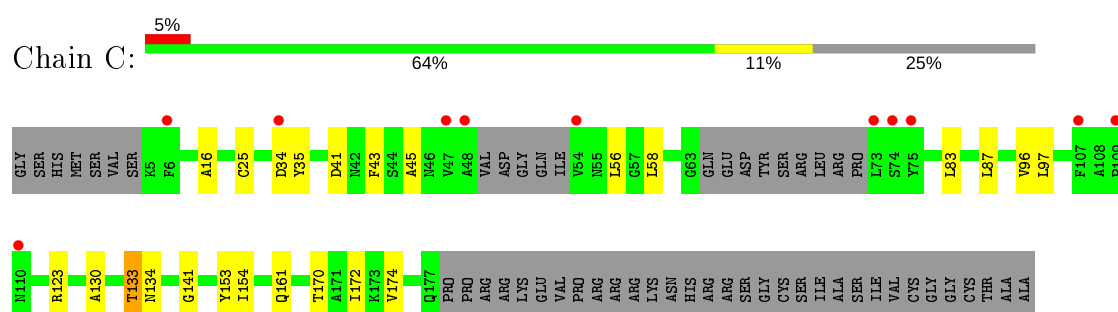
• Molecule 1: RAC-LIKE GTP-BINDING PROTEIN ARAC7



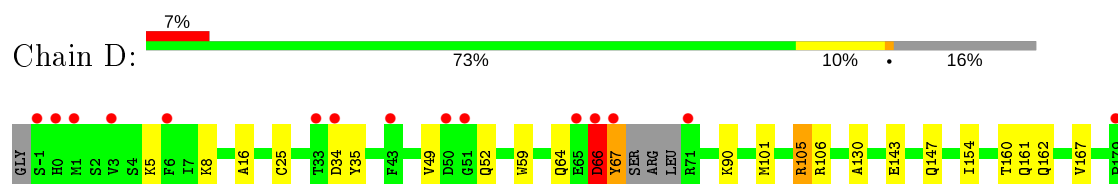
• Molecule 1: RAC-LIKE GTP-BINDING PROTEIN ARAC7



• Molecule 1: RAC-LIKE GTP-BINDING PROTEIN ARAC7



• Molecule 1: RAC-LIKE GTP-BINDING PROTEIN ARAC7



ARG
ARG
LYS
GLU
VAL
PRO
ARG
ARG
ARG
LYS
ASN
HIS
ARG
ARG
SER
GLY
CYS
SER
ILE
ALA
SER
ILE
VAL
CYS
GLY
GLY
CYS
THR
ALA
ALA

4 Data and refinement statistics

Property	Value	Source
Space group	P 1 2 1	Depositor
Cell constants a, b, c, α , β , γ	76.76 Å 30.20 Å 139.36 Å 90.00° 100.06° 90.00°	Depositor
Resolution (Å)	37.80 – 1.78 37.79 – 1.78	Depositor EDS
% Data completeness (in resolution range)	100.0 (37.80-1.78) 100.0 (37.79-1.78)	Depositor EDS
R_{merge}	0.08	Depositor
R_{sym}	(Not available)	Depositor
$\langle I/\sigma(I) \rangle$ ¹	2.77 (at 1.78 Å)	Xtriage
Refinement program	REFMAC 5.2.0005	Depositor
R, R_{free}	0.187 , 0.227 0.186 , 0.227	Depositor DCC
R_{free} test set	3106 reflections (5.04%)	wwPDB-VP
Wilson B-factor (Å ²)	17.0	Xtriage
Anisotropy	0.307	Xtriage
Bulk solvent k_{sol} (e/Å ³), B_{sol} (Å ²)	0.41 , 59.8	EDS
L-test for twinning ²	$\langle L \rangle = 0.45$, $\langle L^2 \rangle = 0.27$	Xtriage
Estimated twinning fraction	No twinning to report.	Xtriage
F_o, F_c correlation	0.95	EDS
Total number of atoms	5787	wwPDB-VP
Average B, all atoms (Å ²)	19.0	wwPDB-VP

Xtriage's analysis on translational NCS is as follows: *The analyses of the Patterson function reveals a significant off-origin peak that is 37.62 % of the origin peak, indicating pseudo-translational symmetry. The chance of finding a peak of this or larger height randomly in a structure without pseudo-translational symmetry is equal to 4.1740e-04. The detected translational NCS is most likely also responsible for the elevated intensity ratio.*

¹ Intensities estimated from amplitudes.

² Theoretical values of $\langle |L| \rangle$, $\langle L^2 \rangle$ for acentric reflections are 0.5, 0.333 respectively for untwinned datasets, and 0.375, 0.2 for perfectly twinned datasets.

5 Model quality [i](#)

5.1 Standard geometry [i](#)

Bond lengths and bond angles in the following residue types are not validated in this section: GDP, MG

The Z score for a bond length (or angle) is the number of standard deviations the observed value is removed from the expected value. A bond length (or angle) with $|Z| > 5$ is considered an outlier worth inspection. RMSZ is the root-mean-square of all Z scores of the bond lengths (or angles).

Mol	Chain	Bond lengths		Bond angles	
		RMSZ	$\# Z > 5$	RMSZ	$\# Z > 5$
1	A	0.78	0/1395	0.78	0/1893
1	B	0.85	0/1451	0.83	2/1967 (0.1%)
1	C	0.73	0/1235	0.75	0/1674
1	D	0.74	0/1396	0.75	1/1895 (0.1%)
All	All	0.78	0/5477	0.78	3/7429 (0.0%)

Chiral center outliers are detected by calculating the chiral volume of a chiral center and verifying if the center is modelled as a planar moiety or with the opposite hand. A planarity outlier is detected by checking planarity of atoms in a peptide group, atoms in a mainchain group or atoms of a sidechain that are expected to be planar.

Mol	Chain	#Chirality outliers	#Planarity outliers
1	B	0	1

There are no bond length outliers.

All (3) bond angle outliers are listed below:

Mol	Chain	Res	Type	Atoms	Z	Observed(°)	Ideal(°)
1	B	145	ARG	NE-CZ-NH2	-5.77	117.41	120.30
1	B	145	ARG	NE-CZ-NH1	5.20	122.90	120.30
1	D	66	ASP	C-N-CA	5.02	134.24	121.70

There are no chirality outliers.

All (1) planarity outliers are listed below:

Mol	Chain	Res	Type	Group
1	B	131	ASP	Peptide

5.2 Too-close contacts ⓘ

In the following table, the Non-H and H(model) columns list the number of non-hydrogen atoms and hydrogen atoms in the chain respectively. The H(added) column lists the number of hydrogen atoms added and optimized by MolProbity. The Clashes column lists the number of clashes within the asymmetric unit, whereas Symm-Clashes lists symmetry related clashes.

Mol	Chain	Non-H	H(model)	H(added)	Clashes	Symm-Clashes
1	A	1369	0	1368	20	0
1	B	1423	0	1441	21	0
1	C	1214	0	1218	19	0
1	D	1369	0	1368	21	0
2	A	28	0	12	0	0
2	B	28	0	12	0	0
2	C	28	0	12	0	0
2	D	28	0	12	0	0
3	A	1	0	0	0	0
3	B	1	0	0	0	0
3	C	1	0	0	0	0
3	D	1	0	0	0	0
4	A	74	0	0	2	0
4	B	97	0	0	2	0
4	C	59	0	0	1	0
4	D	66	0	0	5	0
All	All	5787	0	5443	73	0

The all-atom clashscore is defined as the number of clashes found per 1000 atoms (including hydrogen atoms). The all-atom clashscore for this structure is 7.

The worst 5 of 73 close contacts within the same asymmetric unit are listed below, sorted by their clash magnitude.

Atom-1	Atom-2	Interatomic distance (Å)	Clash overlap (Å)
1:A:160:THR:OG1	1:A:162:GLN:HG3	1.53	1.07
1:D:160:THR:OG1	1:D:162:GLN:HG3	1.60	0.99
1:B:71:ARG:NH2	1:B:76:ARG:HH21	1.62	0.97
1:B:71:ARG:NH2	1:B:76:ARG:NH2	2.24	0.86
1:D:105:ARG:HH11	1:D:105:ARG:HG2	1.44	0.82

There are no symmetry-related clashes.

5.3 Torsion angles ⓘ

5.3.1 Protein backbone ⓘ

In the following table, the Percentiles column shows the percent Ramachandran outliers of the chain as a percentile score with respect to all X-ray entries followed by that with respect to entries of similar resolution.

The Analysed column shows the number of residues for which the backbone conformation was analysed, and the total number of residues.

Mol	Chain	Analysed	Favoured	Allowed	Outliers	Percentiles	
1	A	174/212 (82%)	167 (96%)	7 (4%)	0	100	100
1	B	182/212 (86%)	173 (95%)	6 (3%)	3 (2%)	9	2
1	C	153/212 (72%)	150 (98%)	3 (2%)	0	100	100
1	D	174/212 (82%)	168 (97%)	5 (3%)	1 (1%)	25	11
All	All	683/848 (80%)	658 (96%)	21 (3%)	4 (1%)	25	11

All (4) Ramachandran outliers are listed below:

Mol	Chain	Res	Type
1	B	134	ASN
1	B	50	ASP
1	B	132	HIS
1	D	66	ASP

5.3.2 Protein sidechains ⓘ

In the following table, the Percentiles column shows the percent sidechain outliers of the chain as a percentile score with respect to all X-ray entries followed by that with respect to entries of similar resolution.

The Analysed column shows the number of residues for which the sidechain conformation was analysed, and the total number of residues.

Mol	Chain	Analysed	Rotameric	Outliers	Percentiles	
1	A	150/180 (83%)	144 (96%)	6 (4%)	31	14
1	B	156/180 (87%)	150 (96%)	6 (4%)	33	16
1	C	131/180 (73%)	130 (99%)	1 (1%)	81	76
1	D	150/180 (83%)	146 (97%)	4 (3%)	44	28
All	All	587/720 (82%)	570 (97%)	17 (3%)	42	25

5 of 17 residues with a non-rotameric sidechain are listed below:

Mol	Chain	Res	Type
1	B	83	LEU
1	B	106	ARG
1	D	67	TYR
1	B	50	ASP
1	D	90	LYS

Some sidechains can be flipped to improve hydrogen bonding and reduce clashes. 5 of 12 such sidechains are listed below:

Mol	Chain	Res	Type
1	D	55	ASN
1	D	95	ASN
1	D	147	GLN
1	C	46	ASN
1	D	134	ASN

5.3.3 RNA ⓘ

There are no RNA molecules in this entry.

5.4 Non-standard residues in protein, DNA, RNA chains ⓘ

There are no non-standard protein/DNA/RNA residues in this entry.

5.5 Carbohydrates ⓘ

There are no carbohydrates in this entry.

5.6 Ligand geometry ⓘ

Of 8 ligands modelled in this entry, 4 are monoatomic - leaving 4 for Mogul analysis.

In the following table, the Counts columns list the number of bonds (or angles) for which Mogul statistics could be retrieved, the number of bonds (or angles) that are observed in the model and the number of bonds (or angles) that are defined in the Chemical Component Dictionary. The Link column lists molecule types, if any, to which the group is linked. The Z score for a bond length (or angle) is the number of standard deviations the observed value is removed from the expected value. A bond length (or angle) with $|Z| > 2$ is considered an outlier worth inspection. RMSZ is the root-mean-square of all Z scores of the bond lengths (or angles).

Mol	Type	Chain	Res	Link	Bond lengths			Bond angles		
					Counts	RMSZ	# Z > 2	Counts	RMSZ	# Z > 2
2	GDP	A	1179	3	24,30,30	1.52	3 (12%)	31,47,47	1.77	6 (19%)
2	GDP	C	1178	3	24,30,30	1.26	2 (8%)	31,47,47	1.79	6 (19%)
2	GDP	D	1180	3	24,30,30	1.21	2 (8%)	31,47,47	1.83	7 (22%)
2	GDP	B	1182	3	24,30,30	1.69	4 (16%)	31,47,47	2.30	9 (29%)

In the following table, the Chirals column lists the number of chiral outliers, the number of chiral centers analysed, the number of these observed in the model and the number defined in the Chemical Component Dictionary. Similar counts are reported in the Torsion and Rings columns. '-' means no outliers of that kind were identified.

Mol	Type	Chain	Res	Link	Chirals	Torsions	Rings
2	GDP	A	1179	3	-	2/12/32/32	0/3/3/3
2	GDP	C	1178	3	-	2/12/32/32	0/3/3/3
2	GDP	D	1180	3	-	2/12/32/32	0/3/3/3
2	GDP	B	1182	3	-	2/12/32/32	0/3/3/3

The worst 5 of 11 bond length outliers are listed below:

Mol	Chain	Res	Type	Atoms	Z	Observed(Å)	Ideal(Å)
2	B	1182	GDP	C6-C5	5.27	1.50	1.41
2	A	1179	GDP	C6-C5	4.89	1.49	1.41
2	C	1178	GDP	C6-C5	4.63	1.49	1.41
2	D	1180	GDP	C6-C5	4.15	1.48	1.41
2	B	1182	GDP	O4'-C1'	3.90	1.46	1.41

The worst 5 of 28 bond angle outliers are listed below:

Mol	Chain	Res	Type	Atoms	Z	Observed(°)	Ideal(°)
2	B	1182	GDP	C2-N3-C4	5.92	122.12	115.36
2	C	1178	GDP	C5-C6-N1	-5.12	116.43	123.43
2	D	1180	GDP	C6-N1-C2	4.85	123.64	115.93
2	B	1182	GDP	C5-C6-N1	-4.62	117.11	123.43
2	B	1182	GDP	N3-C2-N1	-4.62	121.06	127.22

There are no chirality outliers.

5 of 8 torsion outliers are listed below:

Mol	Chain	Res	Type	Atoms
2	A	1179	GDP	PA-O3A-PB-O3B
2	C	1178	GDP	PA-O3A-PB-O3B

Continued on next page...

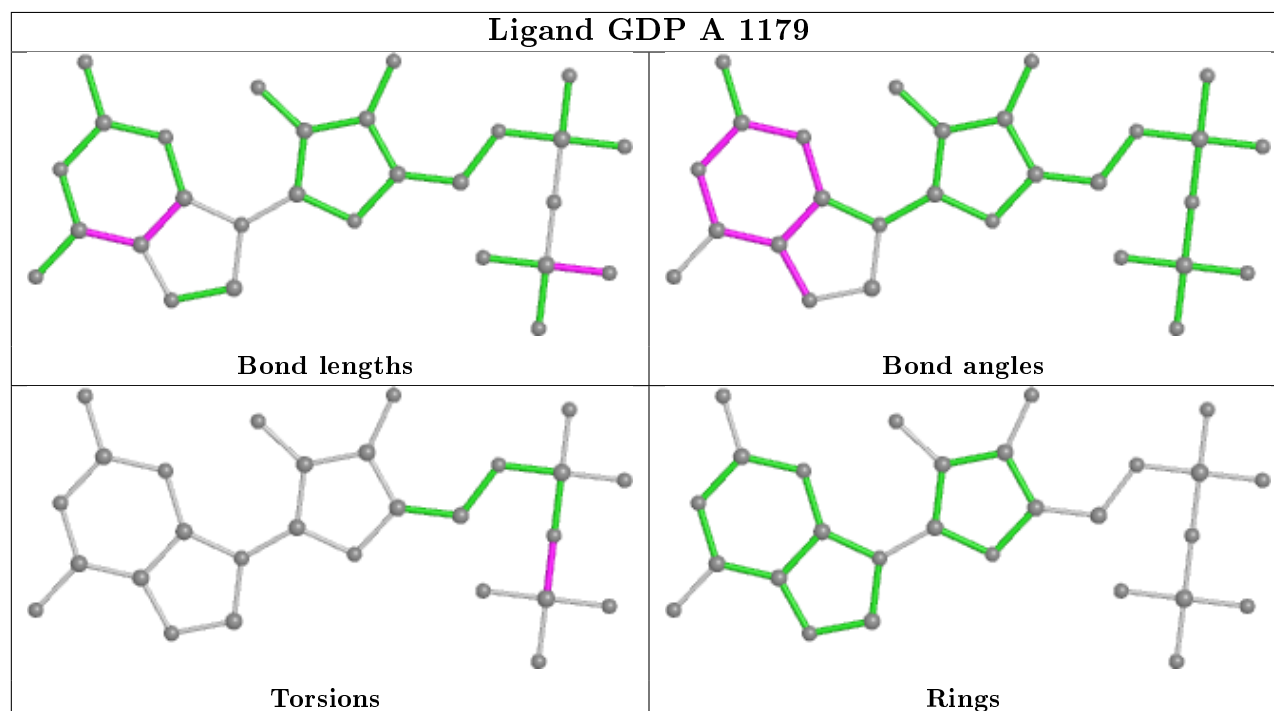
Continued from previous page...

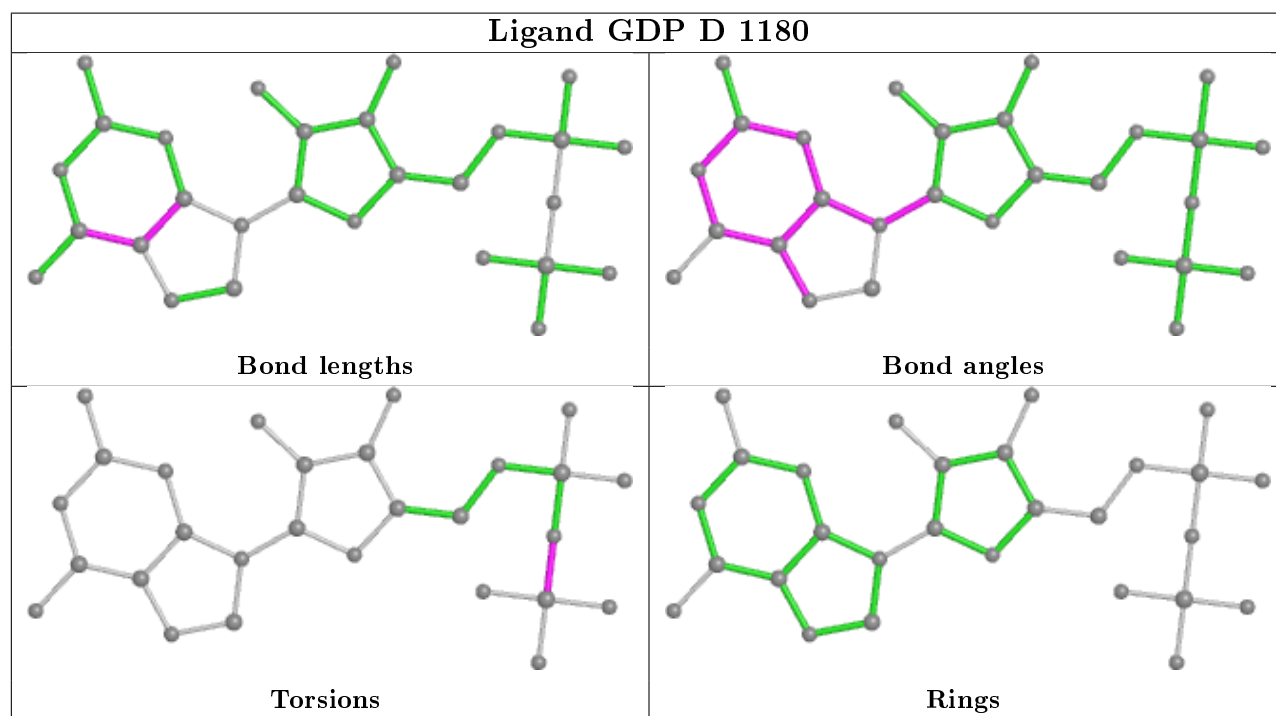
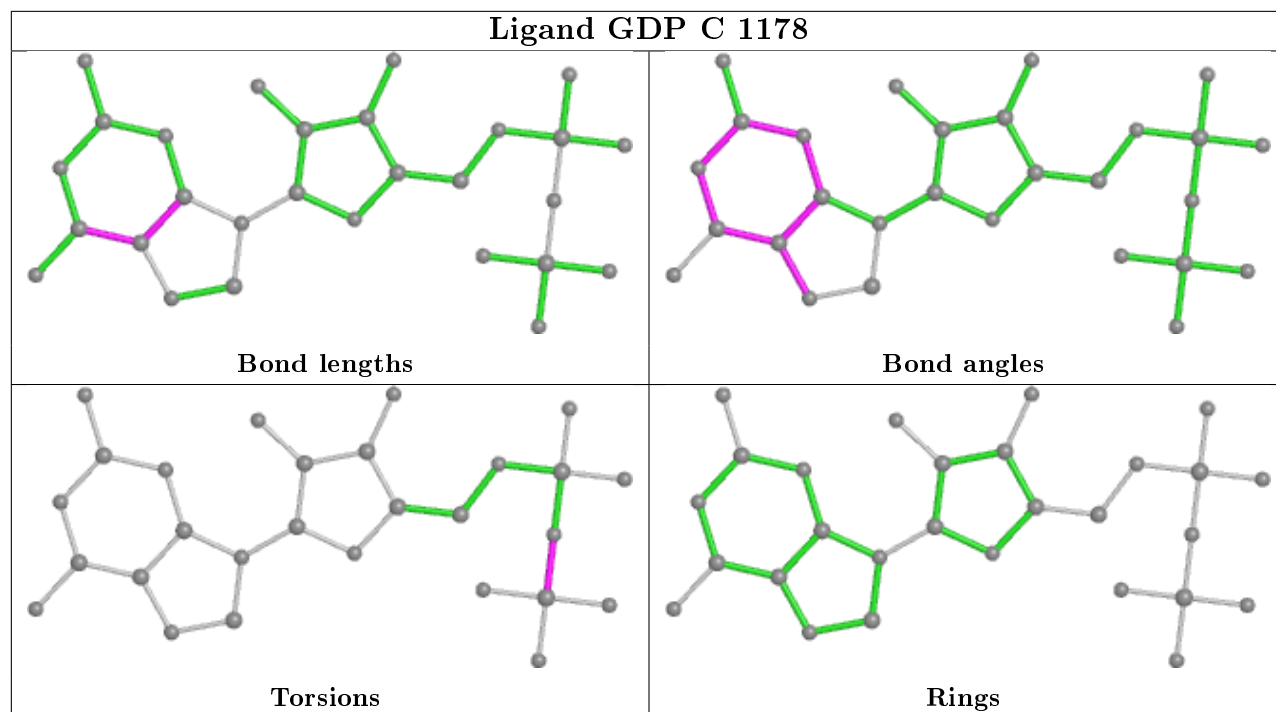
Mol	Chain	Res	Type	Atoms
2	A	1179	GDP	PA-O3A-PB-O1B
2	C	1178	GDP	PA-O3A-PB-O1B
2	B	1182	GDP	PA-O3A-PB-O1B

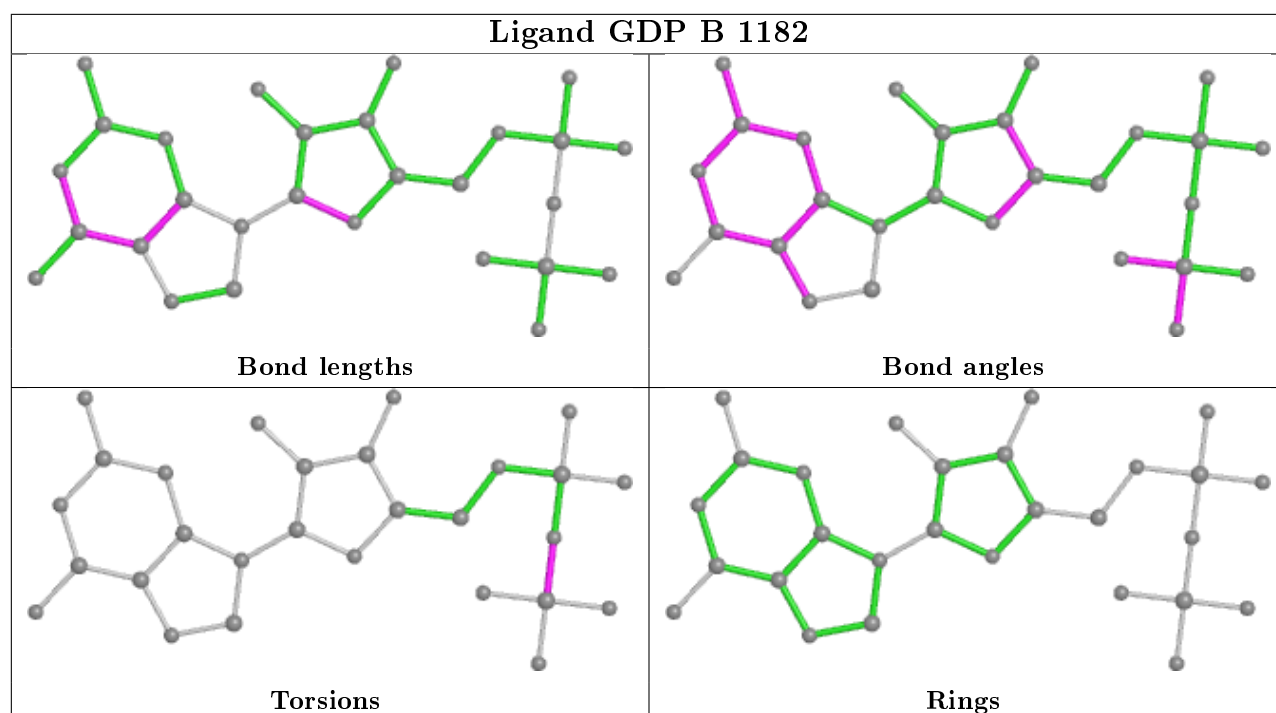
There are no ring outliers.

No monomer is involved in short contacts.

The following is a two-dimensional graphical depiction of Mogul quality analysis of bond lengths, bond angles, torsion angles, and ring geometry for all instances of the Ligand of Interest. In addition, ligands with molecular weight > 250 and outliers as shown on the validation Tables will also be included. For torsion angles, if less than 5% of the Mogul distribution of torsion angles is within 10 degrees of the torsion angle in question, then that torsion angle is considered an outlier. Any bond that is central to one or more torsion angles identified as an outlier by Mogul will be highlighted in the graph. For rings, the root-mean-square deviation (RMSD) between the ring in question and similar rings identified by Mogul is calculated over all ring torsion angles. If the average RMSD is greater than 60 degrees and the minimal RMSD between the ring in question and any Mogul-identified rings is also greater than 60 degrees, then that ring is considered an outlier. The outliers are highlighted in purple. The color gray indicates Mogul did not find sufficient equivalents in the CSD to analyse the geometry.







5.7 Other polymers [i](#)

There are no such residues in this entry.

5.8 Polymer linkage issues [i](#)

There are no chain breaks in this entry.

6 Fit of model and data [i](#)

6.1 Protein, DNA and RNA chains [i](#)

In the following table, the column labelled ‘#RSRZ> 2’ contains the number (and percentage) of RSRZ outliers, followed by percent RSRZ outliers for the chain as percentile scores relative to all X-ray entries and entries of similar resolution. The OWAB column contains the minimum, median, 95th percentile and maximum values of the occupancy-weighted average B-factor per residue. The column labelled ‘Q< 0.9’ lists the number of (and percentage) of residues with an average occupancy less than 0.9.

Mol	Chain	Analysed	<RSRZ>	#RSRZ>2	OWAB(Å ²)	Q<0.9
1	A	178/212 (83%)	0.16	8 (4%) 33 31	7, 16, 34, 53	0
1	B	184/212 (86%)	0.01	6 (3%) 46 45	7, 14, 31, 39	0
1	C	159/212 (75%)	0.17	11 (6%) 16 16	11, 19, 38, 44	0
1	D	178/212 (83%)	0.23	15 (8%) 11 10	9, 18, 40, 53	0
All	All	699/848 (82%)	0.14	40 (5%) 23 22	7, 17, 38, 53	0

The worst 5 of 40 RSRZ outliers are listed below:

Mol	Chain	Res	Type	RSRZ
1	A	67	TYR	7.8
1	A	51	GLY	7.5
1	B	133	THR	5.2
1	D	1	MET	5.2
1	D	67	TYR	4.8

6.2 Non-standard residues in protein, DNA, RNA chains [i](#)

There are no non-standard protein/DNA/RNA residues in this entry.

6.3 Carbohydrates [i](#)

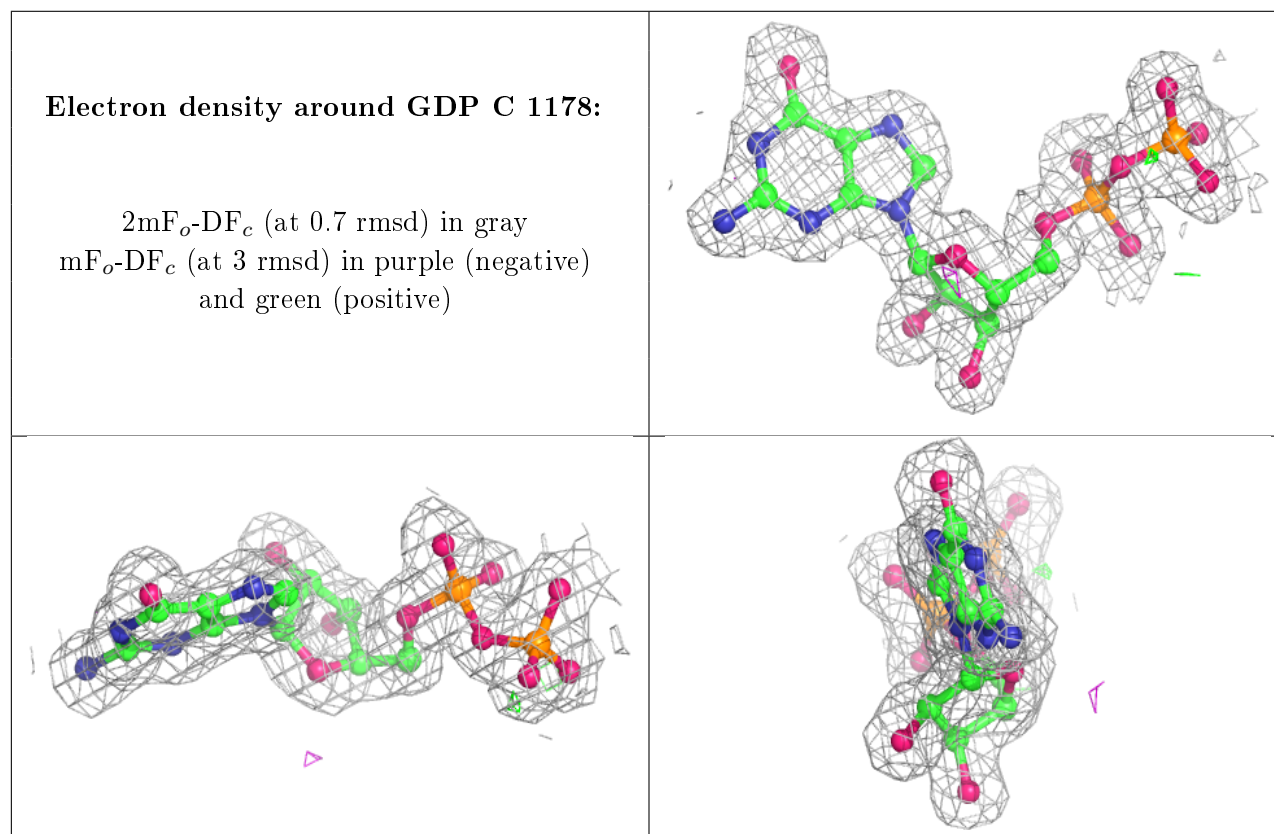
There are no carbohydrates in this entry.

6.4 Ligands [i](#)

In the following table, the Atoms column lists the number of modelled atoms in the group and the number defined in the chemical component dictionary. The B-factors column lists the minimum, median, 95th percentile and maximum values of B factors of atoms in the group. The column labelled ‘Q< 0.9’ lists the number of atoms with occupancy less than 0.9.

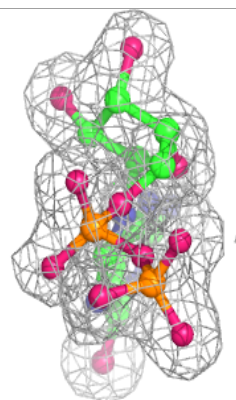
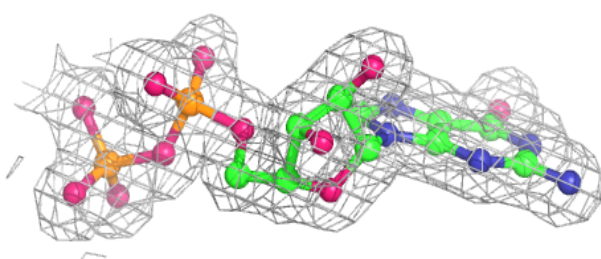
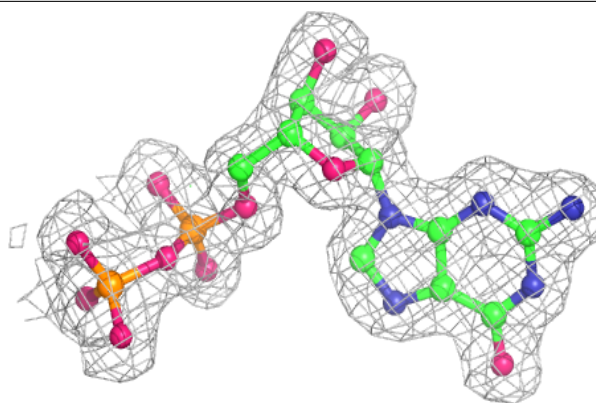
Mol	Type	Chain	Res	Atoms	RSCC	RSR	B-factors(\AA^2)	Q<0.9
2	GDP	C	1178	28/28	0.98	0.07	10,13,17,17	0
2	GDP	D	1180	28/28	0.99	0.07	8,11,13,16	0
2	GDP	A	1179	28/28	0.99	0.07	7,10,12,13	0
3	MG	D	1181	1/1	0.99	0.06	11,11,11,11	0
2	GDP	B	1182	28/28	0.99	0.07	5,9,11,12	0
3	MG	C	1179	1/1	0.99	0.03	12,12,12,12	0
3	MG	B	1183	1/1	0.99	0.07	9,9,9,9	0
3	MG	A	1180	1/1	1.00	0.04	10,10,10,10	0

The following is a graphical depiction of the model fit to experimental electron density of all instances of the Ligand of Interest. In addition, ligands with molecular weight > 250 and outliers as shown on the geometry validation Tables will also be included. Each fit is shown from different orientation to approximate a three-dimensional view.

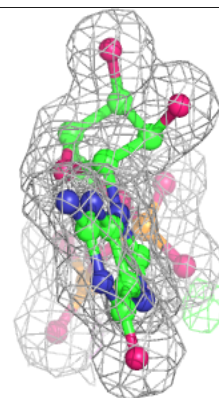
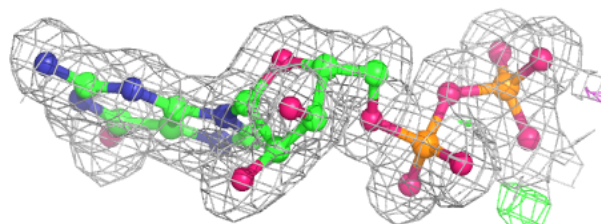
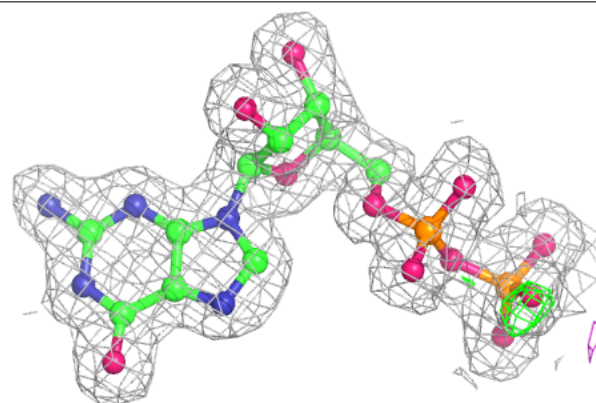


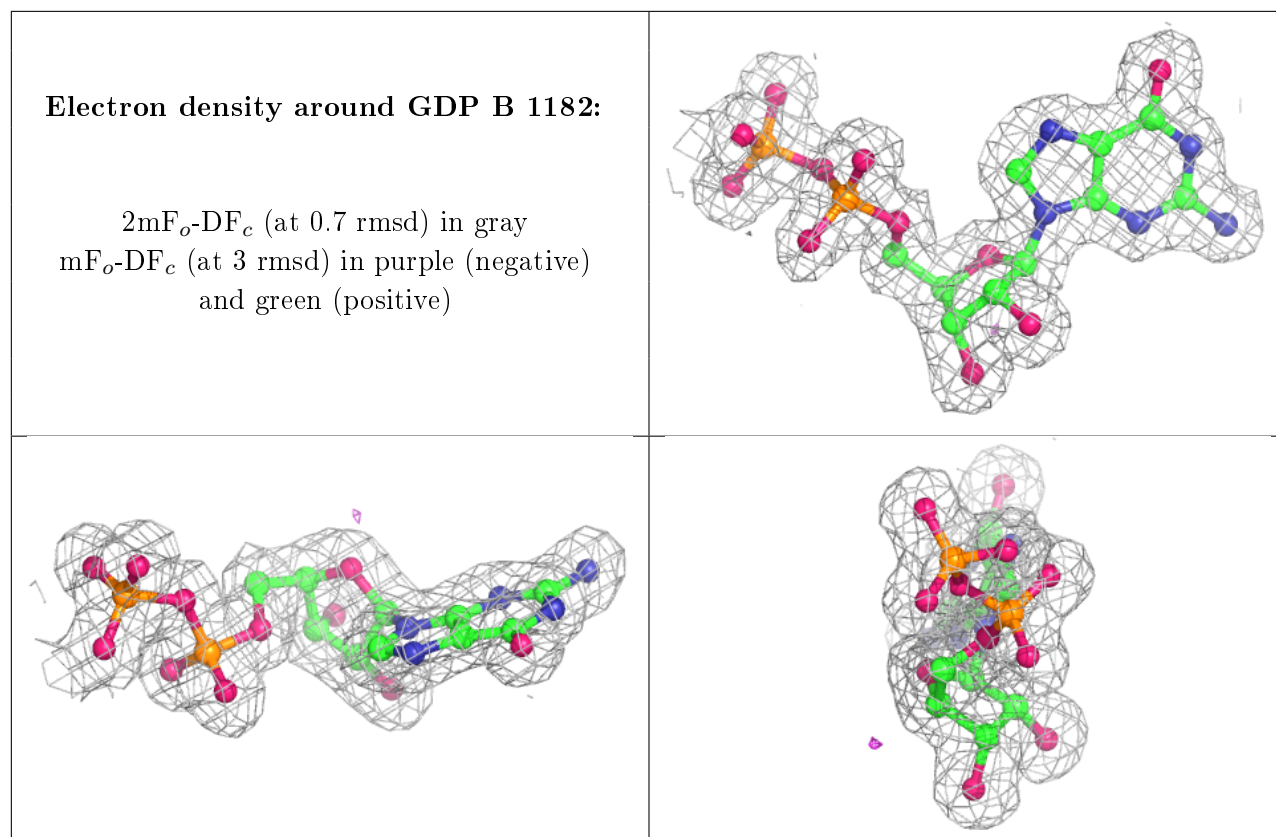
Electron density around GDP D 1180:

$2mF_o-DF_c$ (at 0.7 rmsd) in gray
 mF_o-DF_c (at 3 rmsd) in purple (negative)
and green (positive)

**Electron density around GDP A 1179:**

$2mF_o-DF_c$ (at 0.7 rmsd) in gray
 mF_o-DF_c (at 3 rmsd) in purple (negative)
and green (positive)





6.5 Other polymers [i](#)

There are no such residues in this entry.