



Full wwPDB X-ray Structure Validation Report ⓘ

Sep 13, 2020 – 11:00 AM BST

PDB ID : 1J1U
Title : Crystal structure of archaeal tyrosyl-tRNA synthetase complexed with tRNA(Tyr) and L-tyrosine
Authors : Kobayashi, T.; Nureki, O.; Ishitani, R.; Tukalo, M.; Cusack, S.; Sakamoto, K.; Yokoyama, S.; RIKEN Structural Genomics/Proteomics Initiative (RSGI)
Deposited on : 2002-12-17
Resolution : 1.95 Å(reported)

This is a Full wwPDB X-ray Structure Validation Report for a publicly released PDB entry.

We welcome your comments at validation@mail.wwpdb.org

A user guide is available at

<https://www.wwpdb.org/validation/2017/XrayValidationReportHelp>

with specific help available everywhere you see the ⓘ symbol.

The following versions of software and data (see [references ⓘ](#)) were used in the production of this report:

MolProbity : 4.02b-467
Mogul : 1.8.5 (274361), CSD as541be (2020)
Xtriage (Phenix) : 1.13
EDS : 2.14.4.dev1
Percentile statistics : 20191225.v01 (using entries in the PDB archive December 25th 2019)
Refmac : 5.8.0158
CCP4 : 7.0.044 (Gargrove)
Ideal geometry (proteins) : Engh & Huber (2001)
Ideal geometry (DNA, RNA) : Parkinson et al. (1996)
Validation Pipeline (wwPDB-VP) : 2.14.4.dev1

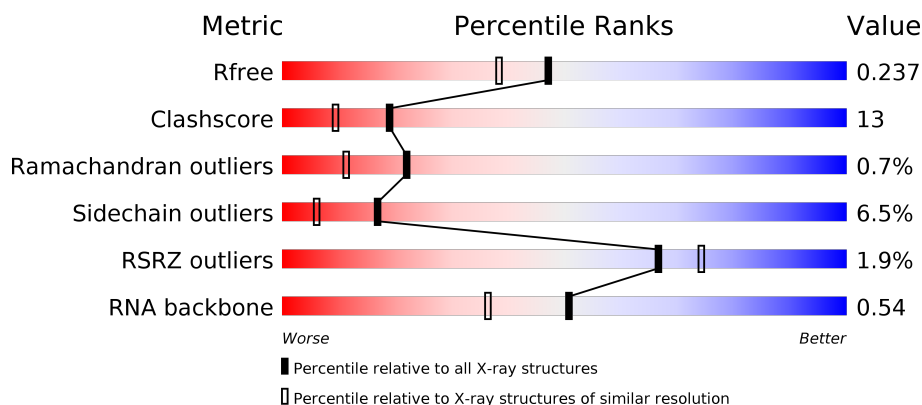
1 Overall quality at a glance

The following experimental techniques were used to determine the structure:

X-RAY DIFFRACTION

The reported resolution of this entry is 1.95 Å.

Percentile scores (ranging between 0-100) for global validation metrics of the entry are shown in the following graphic. The table shows the number of entries on which the scores are based.



Metric	Whole archive (#Entries)	Similar resolution (#Entries, resolution range(Å))
R_{free}	130704	2580 (1.96-1.96)
Clashscore	141614	2705 (1.96-1.96)
Ramachandran outliers	138981	2678 (1.96-1.96)
Sidechain outliers	138945	2678 (1.96-1.96)
RSRZ outliers	127900	2539 (1.96-1.96)
RNA backbone	3102	1124 (2.50-1.42)

The table below summarises the geometric issues observed across the polymeric chains and their fit to the electron density. The red, orange, yellow and green segments on the lower bar indicate the fraction of residues that contain outliers for ≥ 3 , 2, 1 and 0 types of geometric quality criteria respectively. A grey segment represents the fraction of residues that are not modelled. The numeric value for each fraction is indicated below the corresponding segment, with a dot representing fractions $\leq 5\%$. The upper red bar (where present) indicates the fraction of residues that have poor fit to the electron density. The numeric value is given above the bar.

Mol	Chain	Length	Quality of chain
1	B	77	<div> <div>5%</div> <div> <div></div> <div>35%</div> <div>36%</div> <div>14%</div> <div>10%</div> <div>.</div> </div> </div>
2	A	306	<div> <div>%</div> <div> <div></div> <div>76%</div> <div>17%</div> <div>...</div> </div> </div>

2 Entry composition

There are 5 unique types of molecules in this entry. The entry contains 4373 atoms, of which 0 are hydrogens and 0 are deuteriums.

In the tables below, the ZeroOcc column contains the number of atoms modelled with zero occupancy, the AltConf column contains the number of residues with at least one atom in alternate conformation and the Trace column contains the number of residues modelled with at most 2 atoms.

- Molecule 1 is a RNA chain called tRNA(Tyr).

Mol	Chain	Residues	Atoms					ZeroOcc	AltConf	Trace
1	B	74	Total	C	N	O	P	0	0	0
			1578	704	284	517	73			

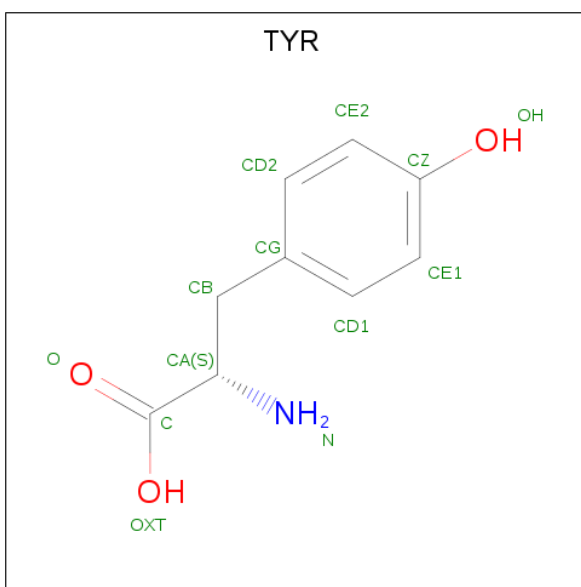
- Molecule 2 is a protein called Tyrosyl-tRNA synthetase.

Mol	Chain	Residues	Atoms					ZeroOcc	AltConf	Trace
2	A	299	Total	C	N	O	S	0	0	0
			2414	1548	405	449	12			

- Molecule 3 is MAGNESIUM ION (three-letter code: MG) (formula: Mg).

Mol	Chain	Residues	Atoms		ZeroOcc	AltConf
3	B	3	Total	Mg	0	0
			3	3		
3	A	1	Total	Mg	0	0
			1	1		

- Molecule 4 is TYROSINE (three-letter code: TYR) (formula: C₉H₁₁NO₃).



Mol	Chain	Residues	Atoms				ZeroOcc	AltConf
4	A	1	Total	C	N	O	0	0
			13	9	1	3		

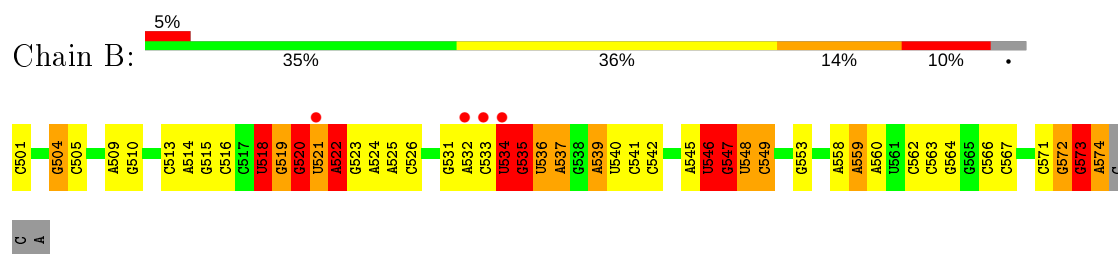
- Molecule 5 is water.

Mol	Chain	Residues	Atoms		ZeroOcc	AltConf
5	B	122	Total	O	0	0
			122	122		
5	A	242	Total	O	0	0
			242	242		

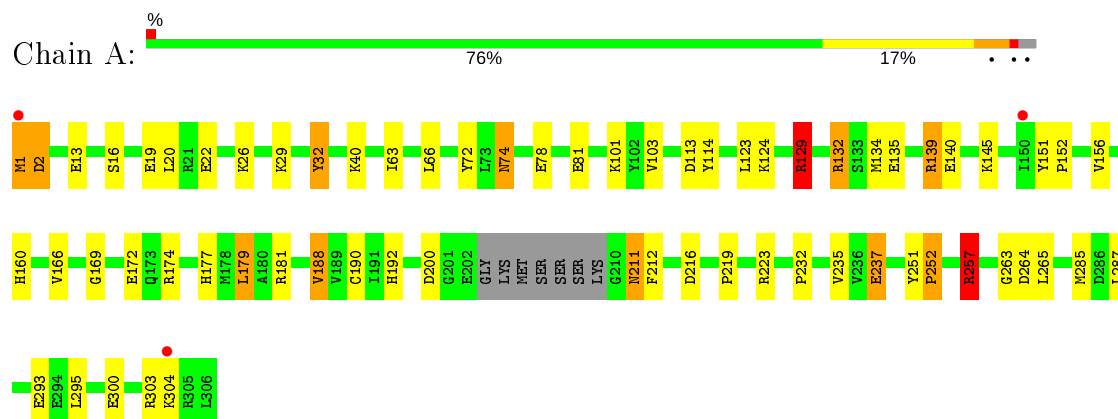
3 Residue-property plots [i](#)

These plots are drawn for all protein, RNA, DNA and oligosaccharide chains in the entry. The first graphic for a chain summarises the proportions of the various outlier classes displayed in the second graphic. The second graphic shows the sequence view annotated by issues in geometry and electron density. Residues are color-coded according to the number of geometric quality criteria for which they contain at least one outlier: green = 0, yellow = 1, orange = 2 and red = 3 or more. A red dot above a residue indicates a poor fit to the electron density ($RSRZ > 2$). Stretches of 2 or more consecutive residues without any outlier are shown as a green connector. Residues present in the sample, but not in the model, are shown in grey.

- Molecule 1: tRNA(Tyr)



- Molecule 2: Tyrosyl-tRNA synthetase



4 Data and refinement statistics

Property	Value	Source
Space group	P 31 2 1	Depositor
Cell constants a, b, c, α , β , γ	86.81Å 86.81Å 156.07Å 90.00° 90.00° 120.00°	Depositor
Resolution (Å)	34.63 – 1.95 34.63 – 1.95	Depositor EDS
% Data completeness (in resolution range)	98.6 (34.63-1.95) 98.8 (34.63-1.95)	Depositor EDS
R_{merge}	0.07	Depositor
R_{sym}	0.07	Depositor
$\langle I/\sigma(I) \rangle$ ¹	1.93 (at 1.95Å)	Xtriage
Refinement program	CNS 1.0	Depositor
R, R_{free}	0.188 , 0.239 0.188 , 0.237	Depositor DCC
R_{free} test set	4982 reflections (10.06%)	wwPDB-VP
Wilson B-factor (Å ²)	32.2	Xtriage
Anisotropy	0.044	Xtriage
Bulk solvent k_{sol} (e/Å ³), B_{sol} (Å ²)	0.35 , 64.6	EDS
L-test for twinning ²	$\langle L \rangle = 0.49$, $\langle L^2 \rangle = 0.33$	Xtriage
Estimated twinning fraction	0.024 for -h,-k,l	Xtriage
F_o, F_c correlation	0.96	EDS
Total number of atoms	4373	wwPDB-VP
Average B, all atoms (Å ²)	43.0	wwPDB-VP

Xtriage's analysis on translational NCS is as follows: *The largest off-origin peak in the Patterson function is 4.03% of the height of the origin peak. No significant pseudotranslation is detected.*

¹Intensities estimated from amplitudes.

²Theoretical values of $\langle |L| \rangle$, $\langle L^2 \rangle$ for acentric reflections are 0.5, 0.333 respectively for untwinned datasets, and 0.375, 0.2 for perfectly twinned datasets.

5 Model quality [i](#)

5.1 Standard geometry [i](#)

Bond lengths and bond angles in the following residue types are not validated in this section: MG

The Z score for a bond length (or angle) is the number of standard deviations the observed value is removed from the expected value. A bond length (or angle) with $|Z| > 5$ is considered an outlier worth inspection. RMSZ is the root-mean-square of all Z scores of the bond lengths (or angles).

Mol	Chain	Bond lengths		Bond angles	
		RMSZ	# Z >5	RMSZ	# Z >5
1	B	1.34	5/1763 (0.3%)	1.25	12/2748 (0.4%)
2	A	1.44	15/2454 (0.6%)	1.18	12/3295 (0.4%)
All	All	1.40	20/4217 (0.5%)	1.21	24/6043 (0.4%)

Chiral center outliers are detected by calculating the chiral volume of a chiral center and verifying if the center is modelled as a planar moiety or with the opposite hand. A planarity outlier is detected by checking planarity of atoms in a peptide group, atoms in a mainchain group or atoms of a sidechain that are expected to be planar.

Mol	Chain	#Chirality outliers	#Planarity outliers
1	B	0	8
2	A	0	1
All	All	0	9

All (20) bond length outliers are listed below:

Mol	Chain	Res	Type	Atoms	Z	Observed(Å)	Ideal(Å)
2	A	135	GLU	CG-CD	8.09	1.64	1.51
2	A	72	TYR	CD2-CE2	7.43	1.50	1.39
1	B	562	C	N1-C2	-7.15	1.32	1.40
2	A	166	VAL	CB-CG2	7.09	1.67	1.52
2	A	293	GLU	CG-CD	6.46	1.61	1.51
2	A	237	GLU	CG-CD	6.28	1.61	1.51
2	A	145	LYS	CD-CE	6.22	1.66	1.51
1	B	563	C	C4-N4	5.96	1.39	1.33
2	A	32	TYR	CD1-CE1	5.92	1.48	1.39
2	A	237	GLU	CB-CG	5.89	1.63	1.52
2	A	103	VAL	CB-CG1	5.87	1.65	1.52
1	B	553	G	O5'-C5'	-5.71	1.33	1.42
2	A	156	VAL	CB-CG1	5.61	1.64	1.52
2	A	22	GLU	CG-CD	5.61	1.60	1.51

Continued on next page...

Continued from previous page...

Mol	Chain	Res	Type	Atoms	Z	Observed(Å)	Ideal(Å)
2	A	293	GLU	CB-CG	5.52	1.62	1.52
2	A	114	TYR	CD1-CE1	5.23	1.47	1.39
2	A	223	ARG	CB-CG	-5.21	1.38	1.52
2	A	172	GLU	CD-OE1	5.13	1.31	1.25
1	B	522	A	C2-N3	-5.11	1.28	1.33
1	B	559	A	C6-N6	5.05	1.38	1.33

All (24) bond angle outliers are listed below:

Mol	Chain	Res	Type	Atoms	Z	Observed(°)	Ideal(°)
1	B	553	G	C5'-C4'-C3'	-7.86	103.43	116.00
2	A	188	VAL	CB-CA-C	-7.76	96.66	111.40
2	A	257	ARG	NE-CZ-NH2	-7.62	116.49	120.30
1	B	534	U	N1-C1'-C2'	7.55	123.81	114.00
1	B	571	C	OP2-P-O3'	6.58	119.67	105.20
1	B	547	G	N9-C1'-C2'	6.47	122.41	114.00
2	A	181	ARG	NE-CZ-NH1	6.14	123.37	120.30
2	A	188	VAL	CG1-CB-CG2	6.10	120.66	110.90
1	B	519	G	C4'-C3'-O3'	-6.06	96.67	109.40
2	A	129	ARG	NE-CZ-NH1	5.94	123.27	120.30
1	B	549	C	OP1-P-O3'	5.90	118.17	105.20
2	A	257	ARG	NE-CZ-NH1	5.83	123.21	120.30
1	B	572	G	O5'-P-OP2	-5.82	100.47	105.70
2	A	129	ARG	CG-CD-NE	-5.61	100.02	111.80
1	B	547	G	OP1-P-O3'	5.56	117.43	105.20
1	B	518	U	N1-C1'-C2'	5.47	121.12	114.00
2	A	179	LEU	CA-CB-CG	5.44	127.82	115.30
1	B	537	A	N9-C1'-C2'	-5.43	106.02	112.00
1	B	535	G	C2'-C3'-O3'	5.29	122.17	113.70
1	B	573	G	C5'-C4'-O4'	-5.25	102.80	109.10
2	A	216	ASP	CB-CG-OD2	-5.24	113.59	118.30
2	A	129	ARG	NE-CZ-NH2	-5.23	117.68	120.30
2	A	264	ASP	CB-CG-OD1	5.08	122.87	118.30
2	A	66	LEU	N-CA-C	-5.03	97.41	111.00

There are no chirality outliers.

All (9) planarity outliers are listed below:

Mol	Chain	Res	Type	Group
2	A	129	ARG	Sidechain
1	B	501	C	Sidechain
1	B	504	G	Sidechain

Continued on next page...

Continued from previous page...

Mol	Chain	Res	Type	Group
1	B	518	U	Sidechain
1	B	520	G	Sidechain
1	B	534	U	Sidechain
1	B	539	A	Sidechain
1	B	542	C	Sidechain
1	B	546	U	Sidechain

5.2 Too-close contacts [i](#)

In the following table, the Non-H and H(model) columns list the number of non-hydrogen atoms and hydrogen atoms in the chain respectively. The H(added) column lists the number of hydrogen atoms added and optimized by MolProbity. The Clashes column lists the number of clashes within the asymmetric unit, whereas Symm-Clashes lists symmetry related clashes.

Mol	Chain	Non-H	H(model)	H(added)	Clashes	Symm-Clashes
1	B	1578	0	802	45	0
2	A	2414	0	2483	53	0
3	A	1	0	0	0	0
3	B	3	0	0	0	0
4	A	13	0	8	0	0
5	A	242	0	0	13	0
5	B	122	0	0	6	0
All	All	4373	0	3293	95	0

The all-atom clashscore is defined as the number of clashes found per 1000 atoms (including hydrogen atoms). The all-atom clashscore for this structure is 13.

All (95) close contacts within the same asymmetric unit are listed below, sorted by their clash magnitude.

Atom-1	Atom-2	Interatomic distance (Å)	Clash overlap (Å)
2:A:134:MET:SD	2:A:134:MET:CE	2.05	1.43
2:A:113:ASP:HB3	5:A:535:HOH:O	1.30	1.29
2:A:257:ARG:HD3	2:A:263:GLY:O	1.62	0.98
1:B:572:G:H2'	1:B:573:G:C5'	1.93	0.97
1:B:572:G:C2'	1:B:573:G:H5''	1.97	0.95
2:A:132:ARG:HG2	5:A:715:HOH:O	1.66	0.94
1:B:521:U:H1'	1:B:560:A:OP1	1.69	0.92
2:A:139:ARG:HA	2:A:139:ARG:HE	1.40	0.86
1:B:572:G:H2'	1:B:573:G:H5''	1.56	0.85
1:B:572:G:H2'	1:B:573:G:H5'	1.57	0.85

Continued on next page...

Continued from previous page...

Atom-1	Atom-2	Interatomic distance (Å)	Clash overlap (Å)
2:A:303:ARG:CB	2:A:303:ARG:HH21	1.91	0.84
2:A:257:ARG:CD	2:A:263:GLY:O	2.26	0.83
2:A:74:ASN:HD21	2:A:139:ARG:H	1.28	0.82
1:B:536:U:H5'	2:A:285:MET:CE	2.10	0.81
2:A:300:GLU:HA	2:A:303:ARG:HH22	1.46	0.81
2:A:139:ARG:NE	2:A:139:ARG:HA	1.97	0.80
2:A:303:ARG:NH2	2:A:303:ARG:HB3	1.98	0.79
1:B:524:A:H5'	5:B:328:HOH:O	1.83	0.77
2:A:124:LYS:HD2	5:A:637:HOH:O	1.88	0.73
1:B:572:G:O2'	1:B:573:G:H5''	1.90	0.71
2:A:232:PRO:HG2	2:A:235:VAL:HB	1.72	0.71
2:A:81:GLU:HB3	5:A:645:HOH:O	1.91	0.70
2:A:139:ARG:NH2	2:A:140:GLU:HG3	2.07	0.70
1:B:572:G:C2'	1:B:573:G:C5'	2.61	0.69
2:A:303:ARG:HB2	2:A:303:ARG:HH21	1.58	0.69
1:B:520:G:H4'	1:B:521:U:O5'	1.93	0.68
2:A:303:ARG:NH2	2:A:303:ARG:CB	2.56	0.66
1:B:533:C:H3'	1:B:534:U:H5''	1.77	0.66
1:B:574:A:O3'	5:B:282:HOH:O	2.13	0.66
1:B:536:U:H5'	2:A:285:MET:HE2	1.79	0.64
1:B:522:A:C8	1:B:522:A:H5'	2.33	0.63
2:A:139:ARG:NE	5:A:714:HOH:O	2.32	0.63
2:A:257:ARG:HD2	2:A:265:LEU:HD22	1.80	0.62
2:A:139:ARG:HH22	2:A:140:GLU:HG3	1.64	0.61
1:B:534:U:C2	1:B:536:U:OP2	2.54	0.61
1:B:513:C:O2'	1:B:514:A:H5'	2.01	0.60
2:A:139:ARG:NH2	2:A:140:GLU:CG	2.64	0.60
1:B:531:G:O6	1:B:541:C:N4	2.32	0.60
1:B:534:U:C5	1:B:537:A:OP2	2.55	0.59
1:B:515:G:H5'	1:B:516:C:OP2	2.03	0.59
1:B:539:A:H2'	1:B:540:U:H5'	1.86	0.58
2:A:129:ARG:HD2	5:A:715:HOH:O	2.03	0.58
2:A:257:ARG:HD2	2:A:265:LEU:CD2	2.33	0.58
2:A:160:HIS:HE1	5:A:724:HOH:O	1.87	0.57
2:A:1:MET:O	2:A:2:ASP:HB3	2.05	0.57
1:B:573:G:H8	1:B:573:G:H5'	1.70	0.57
2:A:74:ASN:ND2	2:A:139:ARG:H	2.01	0.56
2:A:134:MET:CG	2:A:134:MET:CE	2.83	0.56
1:B:521:U:C2	1:B:559:A:H5''	2.40	0.56
1:B:523:G:O2'	1:B:524:A:H5'	2.06	0.55
1:B:536:U:H5'	2:A:285:MET:HE3	1.87	0.55

Continued on next page...

Continued from previous page...

Atom-1	Atom-2	Interatomic distance (Å)	Clash overlap (Å)
2:A:300:GLU:HA	2:A:303:ARG:NH2	2.19	0.54
1:B:520:G:H5''	1:B:521:U:H5'	1.88	0.54
2:A:63:ILE:HG12	2:A:101:LYS:HD3	1.89	0.54
2:A:237:GLU:H	2:A:237:GLU:CD	2.11	0.54
2:A:124:LYS:CD	5:A:637:HOH:O	2.54	0.53
2:A:13:GLU:OE1	2:A:174:ARG:NE	2.34	0.52
2:A:139:ARG:CA	2:A:139:ARG:NE	2.72	0.52
2:A:26:LYS:NZ	5:A:727:HOH:O	2.42	0.52
1:B:564:G:OP1	5:B:38:HOH:O	2.19	0.50
1:B:518:U:H6	1:B:518:U:OP1	1.94	0.50
1:B:524:A:H2'	1:B:525:A:O4'	2.12	0.49
1:B:534:U:C4	1:B:537:A:OP2	2.65	0.49
2:A:251:TYR:HA	2:A:252:PRO:C	2.32	0.49
1:B:535:G:H5'	5:B:332:HOH:O	2.11	0.49
1:B:566:C:O2'	1:B:567:C:H5'	2.12	0.49
1:B:525:A:H2'	1:B:526:C:C6	2.48	0.49
2:A:200:ASP:H	2:A:211:ASN:HD21	1.61	0.49
1:B:547:G:O2'	1:B:549:C:OP2	2.27	0.49
1:B:548:U:H3'	5:B:215:HOH:O	2.13	0.48
2:A:151:TYR:HB3	2:A:152:PRO:CD	2.44	0.48
2:A:16:SER:OG	2:A:19:GLU:HG3	2.14	0.48
2:A:129:ARG:NH1	5:A:716:HOH:O	1.87	0.47
1:B:524:A:C5'	5:B:328:HOH:O	2.50	0.47
1:B:540:U:H2'	1:B:541:C:O4'	2.15	0.47
2:A:139:ARG:HH22	2:A:140:GLU:CG	2.25	0.47
2:A:303:ARG:NH2	5:A:703:HOH:O	2.47	0.47
2:A:177:HIS:HB3	2:A:190:CYS:SG	2.56	0.46
1:B:513:C:C2'	1:B:514:A:H5'	2.46	0.46
1:B:515:G:C5'	1:B:516:C:OP2	2.64	0.45
1:B:521:U:C5	1:B:558:A:O2'	2.69	0.45
1:B:545:A:H2'	1:B:546:U:O4'	2.16	0.45
1:B:533:C:N4	1:B:534:U:C5	2.85	0.45
2:A:78:GLU:O	2:A:81:GLU:HG2	2.16	0.44
2:A:257:ARG:HD2	2:A:263:GLY:O	2.14	0.44
1:B:539:A:C2'	1:B:540:U:H5'	2.47	0.44
2:A:1:MET:O	2:A:2:ASP:CB	2.65	0.44
1:B:522:A:H8	1:B:522:A:H5'	1.80	0.43
2:A:300:GLU:O	2:A:304:LYS:HB2	2.18	0.43
2:A:303:ARG:CZ	5:A:703:HOH:O	2.67	0.42
2:A:160:HIS:CE1	5:A:724:HOH:O	2.68	0.42
1:B:504:G:H2'	1:B:505:C:O4'	2.19	0.42

Continued on next page...

Continued from previous page...

Atom-1	Atom-2	Interatomic distance (Å)	Clash overlap (Å)
2:A:212:PHE:CD1	2:A:212:PHE:C	2.93	0.41
2:A:169:GLY:O	2:A:192:HIS:HA	2.21	0.40
1:B:532:A:H2'	1:B:533:C:O4'	2.20	0.40

There are no symmetry-related clashes.

5.3 Torsion angles [i](#)

5.3.1 Protein backbone [i](#)

In the following table, the Percentiles column shows the percent Ramachandran outliers of the chain as a percentile score with respect to all X-ray entries followed by that with respect to entries of similar resolution.

The Analysed column shows the number of residues for which the backbone conformation was analysed, and the total number of residues.

Mol	Chain	Analysed	Favoured	Allowed	Outliers	Percentiles
2	A	295/306 (96%)	290 (98%)	3 (1%)	2 (1%)	22 11

All (2) Ramachandran outliers are listed below:

Mol	Chain	Res	Type
2	A	2	ASP
2	A	211	ASN

5.3.2 Protein sidechains [i](#)

In the following table, the Percentiles column shows the percent sidechain outliers of the chain as a percentile score with respect to all X-ray entries followed by that with respect to entries of similar resolution.

The Analysed column shows the number of residues for which the sidechain conformation was analysed, and the total number of residues.

Mol	Chain	Analysed	Rotameric	Outliers	Percentiles
2	A	262/268 (98%)	245 (94%)	17 (6%)	17 6

All (17) residues with a non-rotameric sidechain are listed below:

Mol	Chain	Res	Type
2	A	1	MET
2	A	20	LEU
2	A	29	LYS
2	A	32	TYR
2	A	40	LYS
2	A	74	ASN
2	A	123	LEU
2	A	129	ARG
2	A	132	ARG
2	A	139	ARG
2	A	179	LEU
2	A	188	VAL
2	A	219	PRO
2	A	252	PRO
2	A	257	ARG
2	A	287	LEU
2	A	295	LEU

Some sidechains can be flipped to improve hydrogen bonding and reduce clashes. All (3) such sidechains are listed below:

Mol	Chain	Res	Type
2	A	74	ASN
2	A	109	GLN
2	A	211	ASN

5.3.3 RNA [i](#)

Mol	Chain	Analysed	Backbone Outliers	Pucker Outliers
1	B	73/77 (94%)	13 (17%)	6 (8%)

All (13) RNA backbone outliers are listed below:

Mol	Chain	Res	Type
1	B	509	A
1	B	510	G
1	B	518	U
1	B	519	G
1	B	521	U
1	B	522	A
1	B	534	U
1	B	535	G

Continued on next page...

Continued from previous page...

Mol	Chain	Res	Type
1	B	536	U
1	B	546	U
1	B	548	U
1	B	573	G
1	B	574	A

All (6) RNA pucker outliers are listed below:

Mol	Chain	Res	Type
1	B	509	A
1	B	518	U
1	B	520	G
1	B	535	G
1	B	546	U
1	B	547	G

5.4 Non-standard residues in protein, DNA, RNA chains [i](#)

There are no non-standard protein/DNA/RNA residues in this entry.

5.5 Carbohydrates [i](#)

There are no monosaccharides in this entry.

5.6 Ligand geometry [i](#)

Of 5 ligands modelled in this entry, 4 are monoatomic - leaving 1 for Mogul analysis.

In the following table, the Counts columns list the number of bonds (or angles) for which Mogul statistics could be retrieved, the number of bonds (or angles) that are observed in the model and the number of bonds (or angles) that are defined in the Chemical Component Dictionary. The Link column lists molecule types, if any, to which the group is linked. The Z score for a bond length (or angle) is the number of standard deviations the observed value is removed from the expected value. A bond length (or angle) with $|Z| > 2$ is considered an outlier worth inspection. RMSZ is the root-mean-square of all Z scores of the bond lengths (or angles).

Mol	Type	Chain	Res	Link	Bond lengths			Bond angles		
					Counts	RMSZ	# Z > 2	Counts	RMSZ	# Z > 2
4	TYR	A	401	-	10,13,13	1.52	2 (20%)	12,17,17	1.00	1 (8%)

In the following table, the Chirals column lists the number of chiral outliers, the number of chiral

centers analysed, the number of these observed in the model and the number defined in the Chemical Component Dictionary. Similar counts are reported in the Torsion and Rings columns. '-' means no outliers of that kind were identified.

Mol	Type	Chain	Res	Link	Chirals	Torsions	Rings
4	TYR	A	401	-	-	0/4/8/8	0/1/1/1

All (2) bond length outliers are listed below:

Mol	Chain	Res	Type	Atoms	Z	Observed(Å)	Ideal(Å)
4	A	401	TYR	CE1-CD1	2.18	1.42	1.38
4	A	401	TYR	CA-N	2.16	1.51	1.47

All (1) bond angle outliers are listed below:

Mol	Chain	Res	Type	Atoms	Z	Observed(°)	Ideal(°)
4	A	401	TYR	CD1-CE1-CZ	-2.10	117.57	119.88

There are no chirality outliers.

There are no torsion outliers.

There are no ring outliers.

No monomer is involved in short contacts.

5.7 Other polymers [i](#)

There are no such residues in this entry.

5.8 Polymer linkage issues [i](#)

There are no chain breaks in this entry.

6 Fit of model and data [i](#)

6.1 Protein, DNA and RNA chains [i](#)

In the following table, the column labelled ‘#RSRZ> 2’ contains the number (and percentage) of RSRZ outliers, followed by percent RSRZ outliers for the chain as percentile scores relative to all X-ray entries and entries of similar resolution. The OWAB column contains the minimum, median, 95th percentile and maximum values of the occupancy-weighted average B-factor per residue. The column labelled ‘Q< 0.9’ lists the number of (and percentage) of residues with an average occupancy less than 0.9.

Mol	Chain	Analysed	<RSRZ>	#RSRZ>2	OWAB(Å ²)	Q<0.9
1	B	74/77 (96%)	0.13	4 (5%) 25 34	31, 54, 82, 112	0
2	A	299/306 (97%)	0.00	3 (1%) 82 87	19, 32, 53, 86	0
All	All	373/383 (97%)	0.03	7 (1%) 66 74	19, 35, 70, 112	0

All (7) RSRZ outliers are listed below:

Mol	Chain	Res	Type	RSRZ
2	A	1	MET	4.4
1	B	521	U	4.0
1	B	534	U	3.2
1	B	533	C	2.6
1	B	532	A	2.4
2	A	304	LYS	2.3
2	A	150	ILE	2.2

6.2 Non-standard residues in protein, DNA, RNA chains [i](#)

There are no non-standard protein/DNA/RNA residues in this entry.

6.3 Carbohydrates [i](#)

There are no monosaccharides in this entry.

6.4 Ligands [i](#)

In the following table, the Atoms column lists the number of modelled atoms in the group and the number defined in the chemical component dictionary. The B-factors column lists the minimum, median, 95th percentile and maximum values of B factors of atoms in the group. The column labelled ‘Q< 0.9’ lists the number of atoms with occupancy less than 0.9.

Mol	Type	Chain	Res	Atoms	RSCC	RSR	B-factors(\AA^2)	Q<0.9
3	MG	B	1503	1/1	0.92	0.09	59,59,59,59	0
3	MG	B	1501	1/1	0.92	0.04	53,53,53,53	0
3	MG	B	1502	1/1	0.95	0.04	42,42,42,42	0
3	MG	A	503	1/1	0.96	0.19	29,29,29,29	0
4	TYR	A	401	13/13	0.97	0.19	16,20,25,28	0

6.5 Other polymers [i](#)

There are no such residues in this entry.