



# wwPDB X-ray Structure Validation Summary Report ⓘ

Aug 6, 2020 – 04:31 PM BST

PDB ID : 5J11  
Title : Structure of human TSLP in complex with TSLPR and IL-7Ralpha  
Authors : Verstraete, K.; Savvides, S.N.  
Deposited on : 2016-03-28  
Resolution : 2.56 Å(reported)

This is a wwPDB X-ray Structure Validation Summary Report for a publicly released PDB entry.

We welcome your comments at [validation@mail.wwpdb.org](mailto:validation@mail.wwpdb.org)

A user guide is available at

<https://www.wwpdb.org/validation/2017/XrayValidationReportHelp>

with specific help available everywhere you see the ⓘ symbol.

---

The following versions of software and data (see [references ⓘ](#)) were used in the production of this report:

MolProbity : 4.02b-467  
Mogul : 1.8.5 (274361), CSD as541be (2020)  
Xtriage (Phenix) : 1.13  
EDS : 2.13.1  
Percentile statistics : 20191225.v01 (using entries in the PDB archive December 25th 2019)  
Refmac : 5.8.0158  
CCP4 : 7.0.044 (Gargrove)  
Ideal geometry (proteins) : Engh & Huber (2001)  
Ideal geometry (DNA, RNA) : Parkinson et al. (1996)  
Validation Pipeline (wwPDB-VP) : 2.13.1

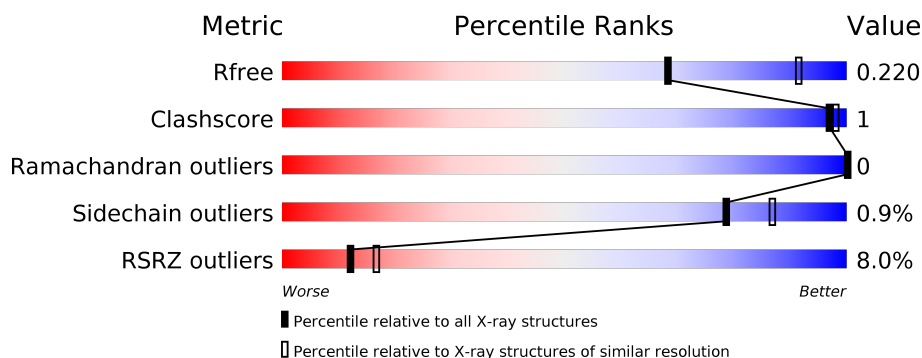
# 1 Overall quality at a glance ⓘ

The following experimental techniques were used to determine the structure:

## *X-RAY DIFFRACTION*

The reported resolution of this entry is 2.56 Å.

Percentile scores (ranging between 0-100) for global validation metrics of the entry are shown in the following graphic. The table shows the number of entries on which the scores are based.



Metric	Whole archive (#Entries)	Similar resolution (#Entries, resolution range(Å))
$R_{free}$	130704	1279 (2.58-2.54)
Clashscore	141614	1327 (2.58-2.54)
Ramachandran outliers	138981	1312 (2.58-2.54)
Sidechain outliers	138945	1312 (2.58-2.54)
RSRZ outliers	127900	1269 (2.58-2.54)

The table below summarises the geometric issues observed across the polymeric chains and their fit to the electron density. The red, orange, yellow and green segments on the lower bar indicate the fraction of residues that contain outliers for  $\geq 3$ , 2, 1 and 0 types of geometric quality criteria respectively. A grey segment represents the fraction of residues that are not modelled. The numeric value for each fraction is indicated below the corresponding segment, with a dot representing fractions  $\leq 5\%$ . The upper red bar (where present) indicates the fraction of residues that have poor fit to the electron density. The numeric value is given above the bar.

Mol	Chain	Length	Quality of chain
1	A	147	<div> <div>5%</div> <div>76%</div> <div>22%</div> </div>
2	B	240	<div> <div>9%</div> <div>80%</div> <div>18%</div> </div>
3	C	230	<div> <div>5%</div> <div>77%</div> <div>5%</div> <div>17%</div> </div>

## 2 Entry composition

There are 6 unique types of molecules in this entry. The entry contains 7778 atoms, of which 3745 are hydrogens and 0 are deuteriums.

In the tables below, the ZeroOcc column contains the number of atoms modelled with zero occupancy, the AltConf column contains the number of residues with at least one atom in alternate conformation and the Trace column contains the number of residues modelled with at most 2 atoms.

- Molecule 1 is a protein called Thymic stromal lymphopoietin.

Mol	Chain	Residues	Atoms						ZeroOcc	AltConf	Trace
			Total	C	H	N	O	S			
1	A	114	1698	551	824	147	167	9	0	0	0

There are 26 discrepancies between the modelled and reference sequences:

Chain	Residue	Modelled	Actual	Comment	Reference
A	8	MET	-	initiating methionine	UNP Q969D9
A	9	GLY	-	expression tag	UNP Q969D9
A	10	SER	-	expression tag	UNP Q969D9
A	11	SER	-	expression tag	UNP Q969D9
A	12	HIS	-	expression tag	UNP Q969D9
A	13	HIS	-	expression tag	UNP Q969D9
A	14	HIS	-	expression tag	UNP Q969D9
A	15	HIS	-	expression tag	UNP Q969D9
A	16	HIS	-	expression tag	UNP Q969D9
A	17	HIS	-	expression tag	UNP Q969D9
A	18	SER	-	expression tag	UNP Q969D9
A	19	SER	-	expression tag	UNP Q969D9
A	20	GLY	-	expression tag	UNP Q969D9
A	21	LEU	-	expression tag	UNP Q969D9
A	22	VAL	-	expression tag	UNP Q969D9
A	23	PRO	-	expression tag	UNP Q969D9
A	24	ARG	-	expression tag	UNP Q969D9
A	25	GLY	-	expression tag	UNP Q969D9
A	26	SER	-	expression tag	UNP Q969D9
A	27	HIS	-	expression tag	UNP Q969D9
A	28	MET	-	expression tag	UNP Q969D9
A	?	-	LYS	deletion	UNP Q969D9
A	?	-	ARG	deletion	UNP Q969D9
A	?	-	ARG	deletion	UNP Q969D9
A	?	-	LYS	deletion	UNP Q969D9
A	?	-	ARG	deletion	UNP Q969D9

- Molecule 2 is a protein called Interleukin-7 receptor subunit alpha.

Mol	Chain	Residues	Atoms						ZeroOcc	AltConf	Trace
2	B	196	Total	C	H	N	O	S	0	0	0
			3021	1002	1478	254	279	8			

There are 24 discrepancies between the modelled and reference sequences:

Chain	Residue	Modelled	Actual	Comment	Reference
B	0	MET	-	initiating methionine	UNP D6RGV2
B	1	GLY	-	expression tag	UNP D6RGV2
B	2	SER	-	expression tag	UNP D6RGV2
B	3	SER	-	expression tag	UNP D6RGV2
B	4	HIS	-	expression tag	UNP D6RGV2
B	5	HIS	-	expression tag	UNP D6RGV2
B	6	HIS	-	expression tag	UNP D6RGV2
B	7	HIS	-	expression tag	UNP D6RGV2
B	8	HIS	-	expression tag	UNP D6RGV2
B	9	HIS	-	expression tag	UNP D6RGV2
B	10	SER	-	expression tag	UNP D6RGV2
B	11	SER	-	expression tag	UNP D6RGV2
B	12	GLY	-	expression tag	UNP D6RGV2
B	13	LEU	-	expression tag	UNP D6RGV2
B	14	VAL	-	expression tag	UNP D6RGV2
B	15	PRO	-	expression tag	UNP D6RGV2
B	16	ARG	-	expression tag	UNP D6RGV2
B	17	GLY	-	expression tag	UNP D6RGV2
B	18	SER	-	expression tag	UNP D6RGV2
B	19	HIS	-	expression tag	UNP D6RGV2
B	20	MET	-	expression tag	UNP D6RGV2
B	237	GLU	-	expression tag	UNP D6RGV2
B	238	MET	-	expression tag	UNP D6RGV2
B	239	ASP	-	expression tag	UNP D6RGV2

- Molecule 3 is a protein called Cytokine receptor-like factor 2.

Mol	Chain	Residues	Atoms						ZeroOcc	AltConf	Trace
3	C	190	Total	C	H	N	O	S	0	0	0
			2952	985	1403	257	298	9			

There are 10 discrepancies between the modelled and reference sequences:

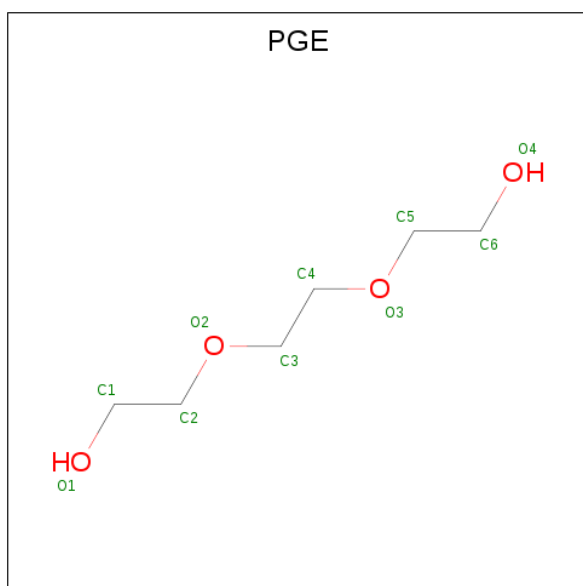
Chain	Residue	Modelled	Actual	Comment	Reference
C	47	GLN	ASN	conflict	UNP Q9HC73

*Continued on next page...*

Continued from previous page...

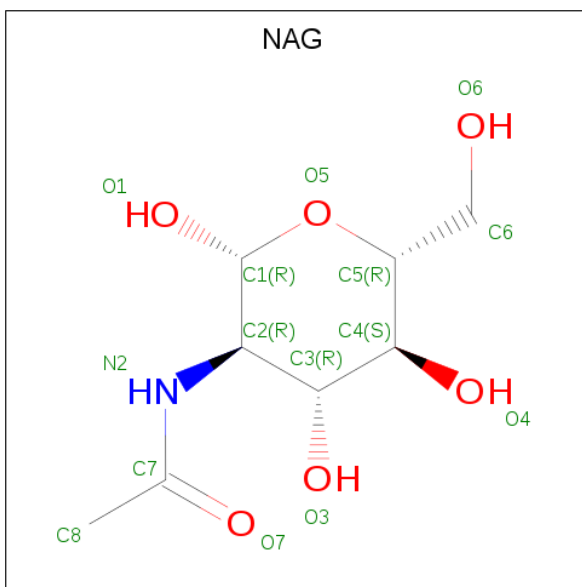
Chain	Residue	Modelled	Actual	Comment	Reference
C	222	GLY	-	expression tag	UNP Q9HC73
C	223	THR	-	expression tag	UNP Q9HC73
C	224	LYS	-	expression tag	UNP Q9HC73
C	225	HIS	-	expression tag	UNP Q9HC73
C	226	HIS	-	expression tag	UNP Q9HC73
C	227	HIS	-	expression tag	UNP Q9HC73
C	228	HIS	-	expression tag	UNP Q9HC73
C	229	HIS	-	expression tag	UNP Q9HC73
C	230	HIS	-	expression tag	UNP Q9HC73

- Molecule 4 is TRIETHYLENE GLYCOL (three-letter code: PGE) (formula:  $C_6H_{14}O_4$ ).



Mol	Chain	Residues	Atoms				ZeroOcc	AltConf
4	C	1	Total	C	H	O	0	0
			24	6	14	4		

- Molecule 5 is 2-acetamido-2-deoxy-beta-D-glucopyranose (three-letter code: NAG) (formula:  $C_8H_{15}NO_6$ ).



Mol	Chain	Residues	Atoms					ZeroOcc	AltConf
5	C	1	Total	C	H	N	O	0	0
			27	8	13	1	5		
5	C	1	Total	C	H	N	O	0	0
			27	8	13	1	5		


- Molecule 6 is water.

Mol	Chain	Residues	Atoms		ZeroOcc	AltConf
6	A	8	Total	O	0	0
			8	8		
6	B	5	Total	O	0	0
			5	5		
6	C	16	Total	O	0	0
			16	16		

### 3 Residue-property plots [i](#)


These plots are drawn for all protein, RNA, DNA and oligosaccharide chains in the entry. The first graphic for a chain summarises the proportions of the various outlier classes displayed in the second graphic. The second graphic shows the sequence view annotated by issues in geometry and electron density. Residues are color-coded according to the number of geometric quality criteria for which they contain at least one outlier: green = 0, yellow = 1, orange = 2 and red = 3 or more. A red dot above a residue indicates a poor fit to the electron density ( $RSRZ > 2$ ). Stretches of 2 or more consecutive residues without any outlier are shown as a green connector. Residues present in the sample, but not in the model, are shown in grey.

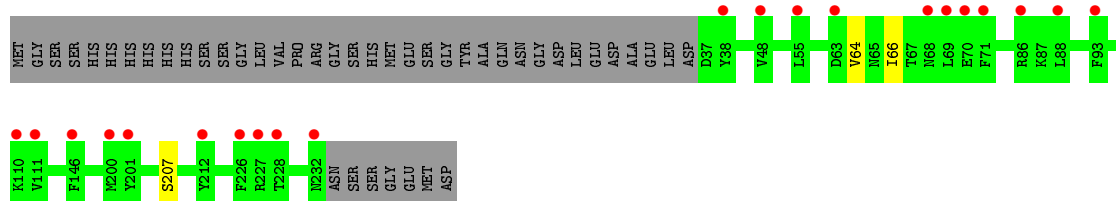
- Molecule 1: Thymic stromal lymphopoietin

Chain A: 




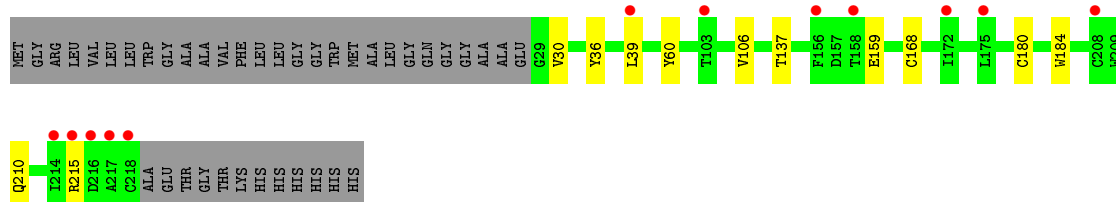
- Molecule 2: Interleukin-7 receptor subunit alpha

Chain B: 



- Molecule 3: Cytokine receptor-like factor 2

Chain C: 



## 4 Data and refinement statistics

Property	Value	Source
Space group	C 1 2 1	Depositor
Cell constants a, b, c, $\alpha$ , $\beta$ , $\gamma$	135.78Å 66.64Å 91.97Å 90.00° 109.20° 90.00°	Depositor
Resolution (Å)	45.76 – 2.56 45.76 – 2.56	Depositor EDS
% Data completeness (in resolution range)	97.7 (45.76-2.56) 98.0 (45.76-2.56)	Depositor EDS
$R_{merge}$	(Not available)	Depositor
$R_{sym}$	(Not available)	Depositor
$\langle I/\sigma(I) \rangle$ <sup>1</sup>	1.37 (at 2.58Å)	Xtriage
Refinement program	BUSTER 2.10.2	Depositor
R, $R_{free}$	0.191 , 0.218 0.195 , 0.220	Depositor DCC
$R_{free}$ test set	1238 reflections (5.02%)	wwPDB-VP
Wilson B-factor (Å <sup>2</sup> )	69.8	Xtriage
Anisotropy	0.338	Xtriage
Bulk solvent $k_{sol}$ (e/Å <sup>3</sup> ), $B_{sol}$ (Å <sup>2</sup> )	0.38 , 68.3	EDS
L-test for twinning <sup>2</sup>	$\langle  L  \rangle = 0.48$ , $\langle L^2 \rangle = 0.32$	Xtriage
Estimated twinning fraction	No twinning to report.	Xtriage
$F_o, F_c$ correlation	0.95	EDS
Total number of atoms	7778	wwPDB-VP
Average B, all atoms (Å <sup>2</sup> )	88.0	wwPDB-VP

Xtriage's analysis on translational NCS is as follows: *The largest off-origin peak in the Patterson function is 5.93% of the height of the origin peak. No significant pseudotranslation is detected.*

<sup>1</sup>Intensities estimated from amplitudes.

<sup>2</sup>Theoretical values of  $\langle |L| \rangle$ ,  $\langle L^2 \rangle$  for acentric reflections are 0.5, 0.333 respectively for untwinned datasets, and 0.375, 0.2 for perfectly twinned datasets.



## 5 Model quality [i](#)

### 5.1 Standard geometry [i](#)

Bond lengths and bond angles in the following residue types are not validated in this section: PGE, NAG

The Z score for a bond length (or angle) is the number of standard deviations the observed value is removed from the expected value. A bond length (or angle) with  $|Z| > 5$  is considered an outlier worth inspection. RMSZ is the root-mean-square of all Z scores of the bond lengths (or angles).

Mol	Chain	Bond lengths		Bond angles	
		RMSZ	$\# Z  > 5$	RMSZ	$\# Z  > 5$
1	A	0.53	0/891	0.63	0/1206
2	B	0.47	0/1582	0.65	0/2148
3	C	0.54	0/1595	0.74	0/2177
All	All	0.51	0/4068	0.68	0/5531

Chiral center outliers are detected by calculating the chiral volume of a chiral center and verifying if the center is modelled as a planar moiety or with the opposite hand. A planarity outlier is detected by checking planarity of atoms in a peptide group, atoms in a mainchain group or atoms of a sidechain that are expected to be planar.

Mol	Chain	#Chirality outliers	#Planarity outliers
3	C	0	1

There are no bond length outliers.

There are no bond angle outliers.

There are no chirality outliers.

All (1) planarity outliers are listed below:

Mol	Chain	Res	Type	Group
3	C	60	TYR	Sidechain

### 5.2 Too-close contacts [i](#)

In the following table, the Non-H and H(model) columns list the number of non-hydrogen atoms and hydrogen atoms in the chain respectively. The H(added) column lists the number of hydrogen atoms added and optimized by MolProbity. The Clashes column lists the number of clashes within the asymmetric unit, whereas Symm-Clashes lists symmetry related clashes.

Mol	Chain	Non-H	H(model)	H(added)	Clashes	Symm-Clashes
1	A	874	824	824	1	0
2	B	1543	1478	1474	1	0
3	C	1549	1403	1409	5	0
4	C	10	14	14	0	0
5	C	28	26	26	1	0
6	A	8	0	0	0	0
6	B	5	0	0	0	0
6	C	16	0	0	0	0
All	All	4033	3745	3747	7	0

The all-atom clashscore is defined as the number of clashes found per 1000 atoms (including hydrogen atoms). The all-atom clashscore for this structure is 1.

The worst 5 of 7 close contacts within the same asymmetric unit are listed below, sorted by their clash magnitude.

Atom-1	Atom-2	Interatomic distance (Å)	Clash overlap (Å)
3:C:137:THR:HG21	5:C:303:NAG:H82	1.78	0.65
3:C:180:CYS:SG	3:C:215:ARG:NH2	2.83	0.52
3:C:210:GLN:HB3	3:C:215:ARG:HD2	1.92	0.52
2:B:64:VAL:O	2:B:66:ILE:HD12	2.14	0.47
3:C:30:VAL:HG21	3:C:106:VAL:HG12	1.98	0.45

There are no symmetry-related clashes.

## 5.3 Torsion angles [i](#)

### 5.3.1 Protein backbone [i](#)

In the following table, the Percentiles column shows the percent Ramachandran outliers of the chain as a percentile score with respect to all X-ray entries followed by that with respect to entries of similar resolution.

The Analysed column shows the number of residues for which the backbone conformation was analysed, and the total number of residues.

Mol	Chain	Analysed	Favoured	Allowed	Outliers	Percentiles	
1	A	110/147 (75%)	105 (96%)	5 (4%)	0	100	100
2	B	194/240 (81%)	184 (95%)	10 (5%)	0	100	100
3	C	188/230 (82%)	181 (96%)	7 (4%)	0	100	100
All	All	492/617 (80%)	470 (96%)	22 (4%)	0	100	100

There are no Ramachandran outliers to report.

### 5.3.2 Protein sidechains ⓘ

In the following table, the Percentiles column shows the percent sidechain outliers of the chain as a percentile score with respect to all X-ray entries followed by that with respect to entries of similar resolution.

The Analysed column shows the number of residues for which the sidechain conformation was analysed, and the total number of residues.

Mol	Chain	Analysed	Rotameric	Outliers	Percentiles	
1	A	93/129 (72%)	93 (100%)	0	100	100
2	B	163/219 (74%)	162 (99%)	1 (1%)	86	92
3	C	167/199 (84%)	164 (98%)	3 (2%)	59	73
All	All	423/547 (77%)	419 (99%)	4 (1%)	78	87

All (4) residues with a non-rotameric sidechain are listed below:

Mol	Chain	Res	Type
2	B	207	SER
3	C	159	GLU
3	C	168	CYS
3	C	184	TRP

Some sidechains can be flipped to improve hydrogen bonding and reduce clashes. There are no such sidechains identified.

### 5.3.3 RNA ⓘ

There are no RNA molecules in this entry.

## 5.4 Non-standard residues in protein, DNA, RNA chains ⓘ

There are no non-standard protein/DNA/RNA residues in this entry.

## 5.5 Carbohydrates ⓘ

There are no monosaccharides in this entry.

## 5.6 Ligand geometry

3 ligands are modelled in this entry.

In the following table, the Counts columns list the number of bonds (or angles) for which Mogul statistics could be retrieved, the number of bonds (or angles) that are observed in the model and the number of bonds (or angles) that are defined in the Chemical Component Dictionary. The Link column lists molecule types, if any, to which the group is linked. The Z score for a bond length (or angle) is the number of standard deviations the observed value is removed from the expected value. A bond length (or angle) with  $|Z| > 2$  is considered an outlier worth inspection. RMSZ is the root-mean-square of all Z scores of the bond lengths (or angles).

Mol	Type	Chain	Res	Link	Bond lengths			Bond angles		
					Counts	RMSZ	# Z  > 2	Counts	RMSZ	# Z  > 2
5	NAG	C	303	3	14,14,15	0.33	0	17,19,21	1.19	1 (5%)
5	NAG	C	302	3	14,14,15	0.34	0	17,19,21	0.75	1 (5%)
4	PGE	C	301	-	9,9,9	0.38	0	8,8,8	0.29	0

In the following table, the Chirals column lists the number of chiral outliers, the number of chiral centers analysed, the number of these observed in the model and the number defined in the Chemical Component Dictionary. Similar counts are reported in the Torsion and Rings columns. '-' means no outliers of that kind were identified.

Mol	Type	Chain	Res	Link	Chirals	Torsions	Rings
5	NAG	C	303	3	-	2/6/23/26	0/1/1/1
5	NAG	C	302	3	-	2/6/23/26	0/1/1/1
4	PGE	C	301	-	-	4/7/7/7	-

There are no bond length outliers.

All (2) bond angle outliers are listed below:

Mol	Chain	Res	Type	Atoms	Z	Observed(°)	Ideal(°)
5	C	303	NAG	O5-C1-C2	-4.29	104.52	111.29
5	C	302	NAG	C1-C2-N2	-2.08	106.94	110.49

There are no chirality outliers.

5 of 8 torsion outliers are listed below:

Mol	Chain	Res	Type	Atoms
5	C	303	NAG	O5-C5-C6-O6
5	C	303	NAG	C4-C5-C6-O6
4	C	301	PGE	O3-C5-C6-O4
4	C	301	PGE	O1-C1-C2-O2

*Continued on next page...*

*Continued from previous page...*

Mol	Chain	Res	Type	Atoms
5	C	302	NAG	C8-C7-N2-C2

There are no ring outliers.

1 monomer is involved in 1 short contact:

Mol	Chain	Res	Type	Clashes	Symm-Clashes
5	C	303	NAG	1	0

## 5.7 Other polymers [i](#)

There are no such residues in this entry.

## 5.8 Polymer linkage issues [i](#)

There are no chain breaks in this entry.

## 6 Fit of model and data [i](#)

### 6.1 Protein, DNA and RNA chains [i](#)

In the following table, the column labelled ‘#RSRZ> 2’ contains the number (and percentage) of RSRZ outliers, followed by percent RSRZ outliers for the chain as percentile scores relative to all X-ray entries and entries of similar resolution. The OWAB column contains the minimum, median, 95<sup>th</sup> percentile and maximum values of the occupancy-weighted average B-factor per residue. The column labelled ‘Q< 0.9’ lists the number of (and percentage) of residues with an average occupancy less than 0.9.

Mol	Chain	Analysed	<RSRZ>	#RSRZ>2	OWAB(Å <sup>2</sup> )	Q<0.9
1	A	114/147 (77%)	0.74	7 (6%) 21 26	56, 77, 126, 143	0
2	B	196/240 (81%)	0.76	21 (10%) 6 8	68, 94, 149, 170	0
3	C	190/230 (82%)	0.72	12 (6%) 20 25	54, 78, 121, 151	0
All	All	500/617 (81%)	0.74	40 (8%) 12 17	54, 84, 140, 170	0

The worst 5 of 40 RSRZ outliers are listed below:

Mol	Chain	Res	Type	RSRZ
3	C	103	THR	4.5
3	C	216	ASP	4.3
1	A	28	MET	3.8
2	B	38	TYR	3.6
2	B	212	TYR	3.5

### 6.2 Non-standard residues in protein, DNA, RNA chains [i](#)

There are no non-standard protein/DNA/RNA residues in this entry.

### 6.3 Carbohydrates [i](#)

There are no monosaccharides in this entry.

### 6.4 Ligands [i](#)

In the following table, the Atoms column lists the number of modelled atoms in the group and the number defined in the chemical component dictionary. The B-factors column lists the minimum, median, 95<sup>th</sup> percentile and maximum values of B factors of atoms in the group. The column labelled ‘Q< 0.9’ lists the number of atoms with occupancy less than 0.9.

Mol	Type	Chain	Res	Atoms	RSCC	RSR	B-factors( $\text{\AA}^2$ )	Q<0.9
4	PGE	C	301	10/10	0.64	0.38	86,96,98,98	0
5	NAG	C	303	14/15	0.75	0.24	131,146,154,156	0
5	NAG	C	302	14/15	0.88	0.25	98,110,116,120	0

## 6.5 Other polymers [i](#)

There are no such residues in this entry.