



Full wwPDB X-ray Structure Validation Report ⓘ

Aug 9, 2020 – 02:20 PM BST

PDB ID : 5J14
Title : Crystal structure of endoglycoceramidase I from *Rhodococcus equi* in complex with GM3
Authors : Chen, L.
Deposited on : 2016-03-28
Resolution : 1.92 Å(reported)

This is a Full wwPDB X-ray Structure Validation Report for a publicly released PDB entry.

We welcome your comments at validation@mail.wwpdb.org

A user guide is available at

<https://www.wwpdb.org/validation/2017/XrayValidationReportHelp>

with specific help available everywhere you see the ⓘ symbol.

The following versions of software and data (see [references ⓘ](#)) were used in the production of this report:

MolProbity : 4.02b-467
Mogul : 1.8.5 (274361), CSD as541be (2020)
Xtriage (Phenix) : 1.13
EDS : 2.13.1
buster-report : 1.1.7 (2018)
Percentile statistics : 20191225.v01 (using entries in the PDB archive December 25th 2019)
Refmac : 5.8.0158
CCP4 : 7.0.044 (Gargrove)
Ideal geometry (proteins) : Engh & Huber (2001)
Ideal geometry (DNA, RNA) : Parkinson et al. (1996)
Validation Pipeline (wwPDB-VP) : 2.13.1

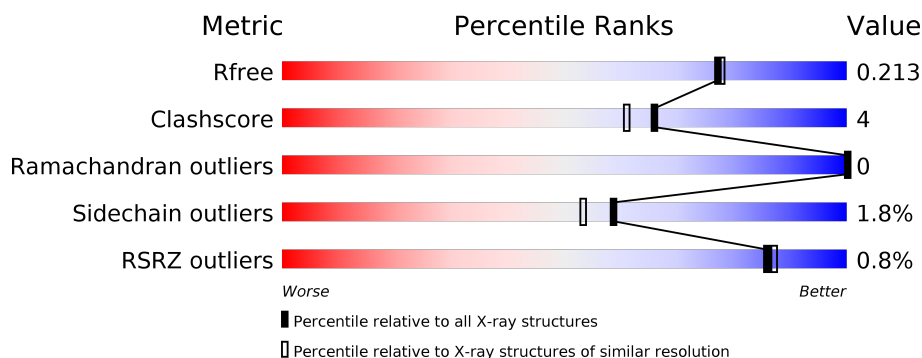
1 Overall quality at a glance

The following experimental techniques were used to determine the structure:

X-RAY DIFFRACTION

The reported resolution of this entry is 1.92 Å.

Percentile scores (ranging between 0-100) for global validation metrics of the entry are shown in the following graphic. The table shows the number of entries on which the scores are based.



Metric	Whole archive (#Entries)	Similar resolution (#Entries, resolution range(Å))
R_{free}	130704	7937 (1.94-1.90)
Clashscore	141614	8644 (1.94-1.90)
Ramachandran outliers	138981	8530 (1.94-1.90)
Sidechain outliers	138945	8530 (1.94-1.90)
RSRZ outliers	127900	7793 (1.94-1.90)

The table below summarises the geometric issues observed across the polymeric chains and their fit to the electron density. The red, orange, yellow and green segments on the lower bar indicate the fraction of residues that contain outliers for ≥ 3 , 2, 1 and 0 types of geometric quality criteria respectively. A grey segment represents the fraction of residues that are not modelled. The numeric value for each fraction is indicated below the corresponding segment, with a dot representing fractions $\leq 5\%$. The upper red bar (where present) indicates the fraction of residues that have poor fit to the electron density. The numeric value is given above the bar.

Mol	Chain	Length	Quality of chain
1	A	500	
1	B	500	
2	C	3	
3	D	2	

The following table lists non-polymeric compounds, carbohydrate monomers and non-standard residues in protein, DNA, RNA chains that are outliers for geometric or electron-density-fit crite-

ria:

Mol	Type	Chain	Res	Chirality	Geometry	Clashes	Electron density
2	SIA	C	3	-	-	-	X

2 Entry composition

There are 6 unique types of molecules in this entry. The entry contains 7648 atoms, of which 0 are hydrogens and 0 are deuteriums.

In the tables below, the ZeroOcc column contains the number of atoms modelled with zero occupancy, the AltConf column contains the number of residues with at least one atom in alternate conformation and the Trace column contains the number of residues modelled with at most 2 atoms.

- Molecule 1 is a protein called Putative secreted endoglycosylceramidase.

Mol	Chain	Residues	Atoms					ZeroOcc	AltConf	Trace
1	A	450	Total	C	N	O	S	0	0	0
			3453	2191	597	653	12			
1	B	434	Total	C	N	O	S	0	1	0
			3342	2118	578	634	12			

There are 70 discrepancies between the modelled and reference sequences:

Chain	Residue	Modelled	Actual	Comment	Reference
A	-7	MET	-	expression tag	UNP E4W8N9
A	-6	GLY	-	expression tag	UNP E4W8N9
A	-5	SER	-	expression tag	UNP E4W8N9
A	-4	SER	-	expression tag	UNP E4W8N9
A	-3	HIS	-	expression tag	UNP E4W8N9
A	-2	HIS	-	expression tag	UNP E4W8N9
A	-1	HIS	-	expression tag	UNP E4W8N9
A	0	HIS	-	expression tag	UNP E4W8N9
A	1	HIS	-	expression tag	UNP E4W8N9
A	2	HIS	-	expression tag	UNP E4W8N9
A	3	SER	-	expression tag	UNP E4W8N9
A	4	SER	-	expression tag	UNP E4W8N9
A	5	GLY	-	expression tag	UNP E4W8N9
A	6	LEU	-	expression tag	UNP E4W8N9
A	7	VAL	-	expression tag	UNP E4W8N9
A	8	PRO	-	expression tag	UNP E4W8N9
A	9	ARG	-	expression tag	UNP E4W8N9
A	10	GLY	-	expression tag	UNP E4W8N9
A	11	SER	-	expression tag	UNP E4W8N9
A	12	HIS	-	expression tag	UNP E4W8N9
A	13	MET	-	expression tag	UNP E4W8N9
A	14	ALA	-	expression tag	UNP E4W8N9
A	15	SER	-	expression tag	UNP E4W8N9
A	16	MET	-	expression tag	UNP E4W8N9
A	17	THR	-	expression tag	UNP E4W8N9

Continued on next page...

Continued from previous page...

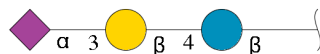
Chain	Residue	Modelled	Actual	Comment	Reference
A	18	GLY	-	expression tag	UNP E4W8N9
A	19	GLY	-	expression tag	UNP E4W8N9
A	20	GLN	-	expression tag	UNP E4W8N9
A	21	GLN	-	expression tag	UNP E4W8N9
A	22	MET	-	expression tag	UNP E4W8N9
A	23	GLY	-	expression tag	UNP E4W8N9
A	24	ARG	-	expression tag	UNP E4W8N9
A	25	GLY	-	expression tag	UNP E4W8N9
A	26	SER	-	expression tag	UNP E4W8N9
A	339	SER	GLU	engineered mutation	UNP E4W8N9
B	-7	MET	-	expression tag	UNP E4W8N9
B	-6	GLY	-	expression tag	UNP E4W8N9
B	-5	SER	-	expression tag	UNP E4W8N9
B	-4	SER	-	expression tag	UNP E4W8N9
B	-3	HIS	-	expression tag	UNP E4W8N9
B	-2	HIS	-	expression tag	UNP E4W8N9
B	-1	HIS	-	expression tag	UNP E4W8N9
B	0	HIS	-	expression tag	UNP E4W8N9
B	1	HIS	-	expression tag	UNP E4W8N9
B	2	HIS	-	expression tag	UNP E4W8N9
B	3	SER	-	expression tag	UNP E4W8N9
B	4	SER	-	expression tag	UNP E4W8N9
B	5	GLY	-	expression tag	UNP E4W8N9
B	6	LEU	-	expression tag	UNP E4W8N9
B	7	VAL	-	expression tag	UNP E4W8N9
B	8	PRO	-	expression tag	UNP E4W8N9
B	9	ARG	-	expression tag	UNP E4W8N9
B	10	GLY	-	expression tag	UNP E4W8N9
B	11	SER	-	expression tag	UNP E4W8N9
B	12	HIS	-	expression tag	UNP E4W8N9
B	13	MET	-	expression tag	UNP E4W8N9
B	14	ALA	-	expression tag	UNP E4W8N9
B	15	SER	-	expression tag	UNP E4W8N9
B	16	MET	-	expression tag	UNP E4W8N9
B	17	THR	-	expression tag	UNP E4W8N9
B	18	GLY	-	expression tag	UNP E4W8N9
B	19	GLY	-	expression tag	UNP E4W8N9
B	20	GLN	-	expression tag	UNP E4W8N9
B	21	GLN	-	expression tag	UNP E4W8N9
B	22	MET	-	expression tag	UNP E4W8N9
B	23	GLY	-	expression tag	UNP E4W8N9
B	24	ARG	-	expression tag	UNP E4W8N9

Continued on next page...

Continued from previous page...

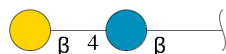
Chain	Residue	Modelled	Actual	Comment	Reference
B	25	GLY	-	expression tag	UNP E4W8N9
B	26	SER	-	expression tag	UNP E4W8N9
B	339	SER	GLU	engineered mutation	UNP E4W8N9

- Molecule 2 is an oligosaccharide called N-acetyl-alpha-neuraminic acid-(2-3)-beta-D-galactopyranose-(1-4)-beta-D-glucopyranose.



Mol	Chain	Residues	Atoms				ZeroOcc	AltConf	Trace
2	C	3	Total	C	N	O	0	0	0
			43	23	1	19			

- Molecule 3 is an oligosaccharide called beta-D-galactopyranose-(1-4)-beta-D-glucopyranose.

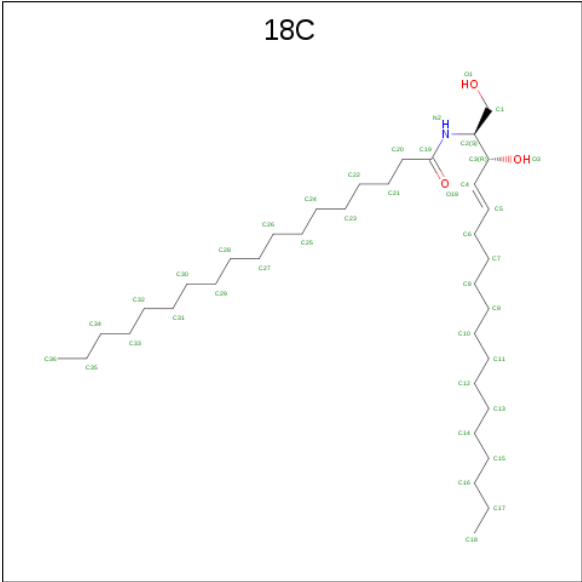


Mol	Chain	Residues	Atoms			ZeroOcc	AltConf	Trace
3	D	2	Total	C	O	0	0	0
			23	12	11			

- Molecule 4 is SODIUM ION (three-letter code: NA) (formula: Na).

Mol	Chain	Residues	Atoms		ZeroOcc	AltConf
4	B	1	Total	Na	0	0
			1	1		
4	A	1	Total	Na	0	0
			1	1		

- Molecule 5 is N-((E,2S,3R)-1,3-DIHYDROXYOCTADEC-4-EN-2-YL)STEARAMIDE (three-letter code: 18C) (formula: C₃₆H₇₁NO₃).



Mol	Chain	Residues	Atoms				ZeroOcc	AltConf
5	A	1	Total	C	N	O	0	0
			39	36	1	2		
5	B	1	Total	C	N	O	0	0
			39	36	1	2		


- Molecule 6 is water.

Mol	Chain	Residues	Atoms		ZeroOcc	AltConf
6	A	367	Total	O	0	0
			367	367		
6	B	340	Total	O	0	0
			340	340		

3 Residue-property plots [i](#)


These plots are drawn for all protein, RNA, DNA and oligosaccharide chains in the entry. The first graphic for a chain summarises the proportions of the various outlier classes displayed in the second graphic. The second graphic shows the sequence view annotated by issues in geometry and electron density. Residues are color-coded according to the number of geometric quality criteria for which they contain at least one outlier: green = 0, yellow = 1, orange = 2 and red = 3 or more. A red dot above a residue indicates a poor fit to the electron density ($RSRZ > 2$). Stretches of 2 or more consecutive residues without any outlier are shown as a green connector. Residues present in the sample, but not in the model, are shown in grey.

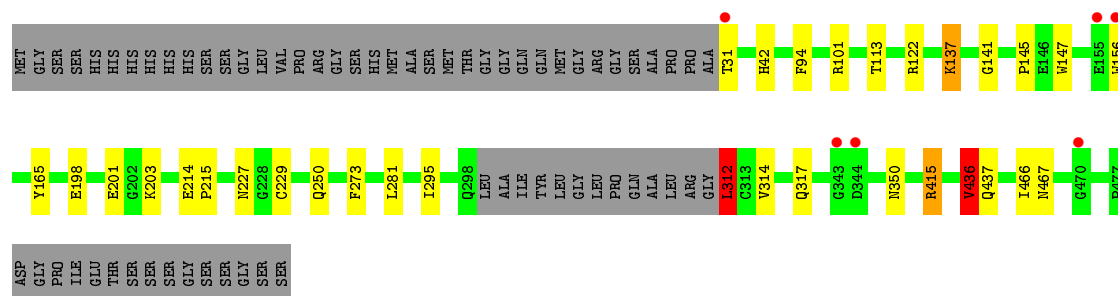
- Molecule 1: Putative secreted endoglycosylceramidase

Chain A: 



- Molecule 1: Putative secreted endoglycosylceramidase

Chain B: 



- Molecule 2: N-acetyl-alpha-neuraminic acid-(2-3)-beta-D-galactopyranose-(1-4)-beta-D-glucopyranose

Chain C: 



- Molecule 3: beta-D-galactopyranose-(1-4)-beta-D-glucopyranose

Chain D: 



4 Data and refinement statistics

Property	Value	Source
Space group	C 1 2 1	Depositor
Cell constants a, b, c, α , β , γ	192.52Å 49.05Å 120.14Å 90.00° 114.19° 90.00°	Depositor
Resolution (Å)	50.00 – 1.92 43.90 – 1.92	Depositor EDS
% Data completeness (in resolution range)	100.0 (50.00-1.92) 99.1 (43.90-1.92)	Depositor EDS
R_{merge}	0.12	Depositor
R_{sym}	(Not available)	Depositor
$\langle I/\sigma(I) \rangle$ ¹	1.25 (at 1.91Å)	Xtriage
Refinement program	REFMAC 5.8.0009	Depositor
R, R_{free}	0.167 , 0.204 0.176 , 0.213	Depositor DCC
R_{free} test set	3947 reflections (5.02%)	wwPDB-VP
Wilson B-factor (Å ²)	12.9	Xtriage
Anisotropy	0.084	Xtriage
Bulk solvent k_{sol} (e/Å ³), B_{sol} (Å ²)	0.37 , 48.6	EDS
L-test for twinning ²	$\langle L \rangle = 0.49$, $\langle L^2 \rangle = 0.33$	Xtriage
Estimated twinning fraction	No twinning to report.	Xtriage
F_o, F_c correlation	0.94	EDS
Total number of atoms	7648	wwPDB-VP
Average B, all atoms (Å ²)	13.0	wwPDB-VP

Xtriage's analysis on translational NCS is as follows: *The largest off-origin peak in the Patterson function is 4.72% of the height of the origin peak. No significant pseudotranslation is detected.*

¹Intensities estimated from amplitudes.

²Theoretical values of $\langle |L| \rangle$, $\langle L^2 \rangle$ for acentric reflections are 0.5, 0.333 respectively for untwinned datasets, and 0.375, 0.2 for perfectly twinned datasets.

5 Model quality [i](#)

5.1 Standard geometry [i](#)

Bond lengths and bond angles in the following residue types are not validated in this section: 18C, SIA, BGC, GAL, NA

The Z score for a bond length (or angle) is the number of standard deviations the observed value is removed from the expected value. A bond length (or angle) with $|Z| > 5$ is considered an outlier worth inspection. RMSZ is the root-mean-square of all Z scores of the bond lengths (or angles).

Mol	Chain	Bond lengths		Bond angles	
		RMSZ	$\# Z > 5$	RMSZ	$\# Z > 5$
1	A	0.49	0/3555	0.77	4/4876 (0.1%)
1	B	0.52	0/3443	0.81	8/4721 (0.2%)
All	All	0.51	0/6998	0.79	12/9597 (0.1%)

There are no bond length outliers.

All (12) bond angle outliers are listed below:

Mol	Chain	Res	Type	Atoms	Z	Observed(°)	Ideal(°)
1	B	436	VAL	CB-CA-C	-6.90	98.28	111.40
1	B	122	ARG	NE-CZ-NH1	6.71	123.65	120.30
1	B	415	ARG	NE-CZ-NH1	-6.56	117.02	120.30
1	A	122	ARG	NE-CZ-NH1	6.45	123.53	120.30
1	A	234	ARG	NE-CZ-NH1	6.40	123.50	120.30
1	B	312	LEU	CA-CB-CG	5.69	128.39	115.30
1	B	415	ARG	NE-CZ-NH2	5.59	123.10	120.30
1	B	101	ARG	NE-CZ-NH2	-5.53	117.53	120.30
1	A	122	ARG	NE-CZ-NH2	-5.45	117.58	120.30
1	A	94	PHE	CB-CG-CD1	5.24	124.47	120.80
1	B	437	GLN	CB-CA-C	-5.20	100.01	110.40
1	B	122	ARG	NE-CZ-NH2	-5.06	117.77	120.30

There are no chirality outliers.

There are no planarity outliers.

5.2 Too-close contacts [i](#)

In the following table, the Non-H and H(model) columns list the number of non-hydrogen atoms and hydrogen atoms in the chain respectively. The H(added) column lists the number of hydrogen

atoms added and optimized by MolProbity. The Clashes column lists the number of clashes within the asymmetric unit, whereas Symm-Clashes lists symmetry related clashes.

Mol	Chain	Non-H	H(model)	H(added)	Clashes	Symm-Clashes
1	A	3453	0	3308	15	0
1	B	3342	0	3190	21	0
2	C	43	0	36	4	0
3	D	23	0	20	0	0
4	A	1	0	0	0	0
4	B	1	0	0	0	0
5	A	39	0	68	11	0
5	B	39	0	68	12	0
6	A	367	0	0	5	0
6	B	340	0	0	9	0
All	All	7648	0	6690	54	0

The all-atom clashscore is defined as the number of clashes found per 1000 atoms (including hydrogen atoms). The all-atom clashscore for this structure is 4.

All (54) close contacts within the same asymmetric unit are listed below, sorted by their clash magnitude.

Atom-1	Atom-2	Interatomic distance (Å)	Clash overlap (Å)
1:B:137:LYS:HD2	1:B:141:GLY:O	1.48	1.13
5:B:504:18C:H341	5:B:504:18C:H132	1.40	1.03
5:B:504:18C:C13	5:B:504:18C:H341	2.02	0.88
1:A:155:GLU:OE1	6:A:601:HOH:O	1.93	0.86
2:C:3:SIA:H91	2:C:3:SIA:N5	1.99	0.77
5:B:504:18C:C34	5:B:504:18C:H132	2.18	0.74
1:B:137:LYS:CD	1:B:141:GLY:O	2.31	0.74
1:A:373:THR:HG23	6:A:884:HOH:O	1.88	0.73
1:B:31:THR:HG23	6:B:609:HOH:O	1.94	0.67
1:A:198:GLU:OE1	6:A:603:HOH:O	2.14	0.66
1:B:198:GLU:OE1	6:B:602:HOH:O	2.14	0.65
1:A:299:LEU:HD21	5:A:505:18C:H82	1.79	0.64
1:A:267:MET:HE2	5:A:505:18C:H152	1.81	0.61
2:C:3:SIA:O4	2:C:3:SIA:H112	2.01	0.61
5:A:505:18C:H121	5:B:504:18C:H141	1.84	0.60
1:B:137:LYS:HD3	6:B:672:HOH:O	2.02	0.58
1:A:295:ILE:HD13	5:A:505:18C:H151	1.86	0.57
1:A:267:MET:CE	5:A:505:18C:H152	2.34	0.57
1:A:250:GLN:O	6:A:603:HOH:O	2.17	0.56
1:B:273:PHE:CE1	1:B:281:LEU:HD13	2.41	0.55
5:B:504:18C:H242	5:B:504:18C:H82	1.87	0.55

Continued on next page...

Continued from previous page...

Atom-1	Atom-2	Interatomic distance (Å)	Clash overlap (Å)
1:B:312:LEU:HD13	1:B:314:VAL:H	1.71	0.55
5:B:504:18C:H362	5:B:504:18C:H151	1.89	0.54
1:B:415:ARG:NH1	6:B:604:HOH:O	2.34	0.54
1:B:250:GLN:O	6:B:602:HOH:O	2.19	0.53
2:C:3:SIA:O1A	2:C:3:SIA:H4	2.08	0.53
1:B:42:HIS:NE2	6:B:601:HOH:O	2.06	0.53
1:B:113:THR:HG23	1:B:203:LYS:HE3	1.92	0.51
5:A:505:18C:H141	5:A:505:18C:H342	1.92	0.50
5:A:505:18C:C16	5:B:504:18C:H161	2.43	0.49
1:A:137:LYS:NZ	1:A:137:LYS:CB	2.77	0.48
1:B:436:VAL:HG13	1:B:466:ILE:HG12	1.94	0.48
1:B:156:TRP:C	1:B:156:TRP:CD1	2.87	0.47
1:A:230:PRO:HB3	1:A:277:VAL:HG11	1.95	0.47
1:A:267:MET:HG2	6:A:826:HOH:O	2.13	0.47
5:A:505:18C:H161	5:B:504:18C:H161	1.97	0.47
1:B:214:GLU:N	1:B:215:PRO:HD3	2.30	0.46
1:B:295:ILE:HG21	5:B:504:18C:H162	1.98	0.46
5:B:504:18C:H72	6:B:821:HOH:O	2.15	0.45
2:C:3:SIA:H91	2:C:3:SIA:C10	2.47	0.44
1:B:317:GLN:HE21	1:B:350:ASN:HD22	1.64	0.44
1:B:201:GLU:OE1	6:B:602:HOH:O	2.21	0.44
1:B:317:GLN:NE2	1:B:350:ASN:HB3	2.33	0.44
1:B:137:LYS:CE	1:B:141:GLY:O	2.66	0.44
5:A:505:18C:H132	5:A:505:18C:H322	1.99	0.44
5:B:504:18C:H121	5:B:504:18C:H322	1.99	0.44
5:B:504:18C:C10	5:B:504:18C:C14	2.96	0.44
1:B:227:ASN:ND2	6:B:603:HOH:O	2.34	0.44
1:B:145:PRO:HB2	1:B:147:TRP:CD1	2.53	0.43
1:A:109:LEU:O	1:A:113:THR:HG23	2.19	0.42
1:A:113:THR:HG21	1:A:199:ARG:HG3	2.01	0.41
1:A:267:MET:HE1	5:A:505:18C:H171	2.03	0.41
5:A:505:18C:C14	5:A:505:18C:H322	2.51	0.41
1:A:259:GLU:HG2	1:A:289:ALA:O	2.22	0.40

There are no symmetry-related clashes.

5.3 Torsion angles

5.3.1 Protein backbone

In the following table, the Percentiles column shows the percent Ramachandran outliers of the chain as a percentile score with respect to all X-ray entries followed by that with respect to entries of similar resolution.

The Analysed column shows the number of residues for which the backbone conformation was analysed, and the total number of residues.

Mol	Chain	Analysed	Favoured	Allowed	Outliers	Percentiles	
1	A	448/500 (90%)	440 (98%)	8 (2%)	0	100	100
1	B	431/500 (86%)	424 (98%)	7 (2%)	0	100	100
All	All	879/1000 (88%)	864 (98%)	15 (2%)	0	100	100

There are no Ramachandran outliers to report.

5.3.2 Protein sidechains

In the following table, the Percentiles column shows the percent sidechain outliers of the chain as a percentile score with respect to all X-ray entries followed by that with respect to entries of similar resolution.

The Analysed column shows the number of residues for which the sidechain conformation was analysed, and the total number of residues.

Mol	Chain	Analysed	Rotameric	Outliers	Percentiles	
1	A	362/400 (90%)	356 (98%)	6 (2%)	60	55
1	B	352/400 (88%)	345 (98%)	7 (2%)	55	49
All	All	714/800 (89%)	701 (98%)	13 (2%)	59	53

All (13) residues with a non-rotameric sidechain are listed below:

Mol	Chain	Res	Type
1	A	94	PHE
1	A	137	LYS
1	A	157	GLU
1	A	165	TYR
1	A	330	ARG
1	A	467	ASN
1	B	94	PHE
1	B	137	LYS

Continued on next page...

Continued from previous page...

Mol	Chain	Res	Type
1	B	165	TYR
1	B	229	CYS
1	B	312	LEU
1	B	436	VAL
1	B	467	ASN

Some sidechains can be flipped to improve hydrogen bonding and reduce clashes. All (6) such sidechains are listed below:

Mol	Chain	Res	Type
1	A	100	GLN
1	A	227	ASN
1	A	298	GLN
1	A	442	GLN
1	B	125	HIS
1	B	317	GLN

5.3.3 RNA ⓘ

There are no RNA molecules in this entry.

5.4 Non-standard residues in protein, DNA, RNA chains ⓘ

There are no non-standard protein/DNA/RNA residues in this entry.

5.5 Carbohydrates ⓘ

5 monosaccharides are modelled in this entry.

In the following table, the Counts columns list the number of bonds (or angles) for which Mogul statistics could be retrieved, the number of bonds (or angles) that are observed in the model and the number of bonds (or angles) that are defined in the Chemical Component Dictionary. The Link column lists molecule types, if any, to which the group is linked. The Z score for a bond length (or angle) is the number of standard deviations the observed value is removed from the expected value. A bond length (or angle) with $|Z| > 2$ is considered an outlier worth inspection. RMSZ is the root-mean-square of all Z scores of the bond lengths (or angles).

Mol	Type	Chain	Res	Link	Bond lengths			Bond angles		
					Counts	RMSZ	$\# Z > 2$	Counts	RMSZ	$\# Z > 2$
2	BGC	C	1	2,5	12,12,12	0.56	0	17,17,17	1.99	4 (23%)
2	GAL	C	2	2	11,11,12	1.99	1 (9%)	15,15,17	1.32	2 (13%)

Mol	Type	Chain	Res	Link	Bond lengths			Bond angles		
					Counts	RMSZ	# Z > 2	Counts	RMSZ	# Z > 2
2	SIA	C	3	2	17,20,21	0.54	0	21,28,31	1.40	3 (14%)
3	BGC	D	1	3,5	12,12,12	0.38	0	17,17,17	1.55	4 (23%)
3	GAL	D	2	3	11,11,12	0.79	0	15,15,17	0.91	2 (13%)

In the following table, the Chirals column lists the number of chiral outliers, the number of chiral centers analysed, the number of these observed in the model and the number defined in the Chemical Component Dictionary. Similar counts are reported in the Torsion and Rings columns. '-' means no outliers of that kind were identified.

Mol	Type	Chain	Res	Link	Chirals	Torsions	Rings
2	BGC	C	1	2,5	-	0/2/22/22	0/1/1/1
2	GAL	C	2	2	-	1/2/19/22	0/1/1/1
2	SIA	C	3	2	-	12/14/34/38	0/1/1/1
3	BGC	D	1	3,5	-	2/2/22/22	0/1/1/1
3	GAL	D	2	3	-	1/2/19/22	0/1/1/1

All (1) bond length outliers are listed below:

Mol	Chain	Res	Type	Atoms	Z	Observed(Å)	Ideal(Å)
2	C	2	GAL	O3-C3	-6.37	1.28	1.43

All (15) bond angle outliers are listed below:

Mol	Chain	Res	Type	Atoms	Z	Observed(°)	Ideal(°)
2	C	1	BGC	C1-O5-C5	5.16	123.40	113.66
2	C	1	BGC	O5-C1-C2	3.68	116.85	110.28
3	D	1	BGC	O5-C5-C4	3.66	116.33	109.69
2	C	3	SIA	C4-C5-C6	3.43	117.77	109.10
2	C	1	BGC	C3-C4-C5	-3.01	104.87	110.24
2	C	3	SIA	C3-C4-C5	2.83	114.88	111.46
3	D	1	BGC	C1-O5-C5	2.75	118.85	113.66
2	C	2	GAL	C1-C2-C3	-2.52	106.57	109.67
2	C	3	SIA	C6-C5-N5	-2.42	106.89	110.91
3	D	1	BGC	O5-C1-C2	2.35	114.47	110.28
2	C	1	BGC	O5-C5-C4	2.19	113.68	109.69
3	D	2	GAL	C1-O5-C5	2.15	115.10	112.19
2	C	2	GAL	O2-C2-C3	2.14	114.42	110.14
3	D	1	BGC	O6-C6-C5	-2.11	104.06	111.29
3	D	2	GAL	C1-C2-C3	2.02	112.15	109.67

There are no chirality outliers.

All (16) torsion outliers are listed below:

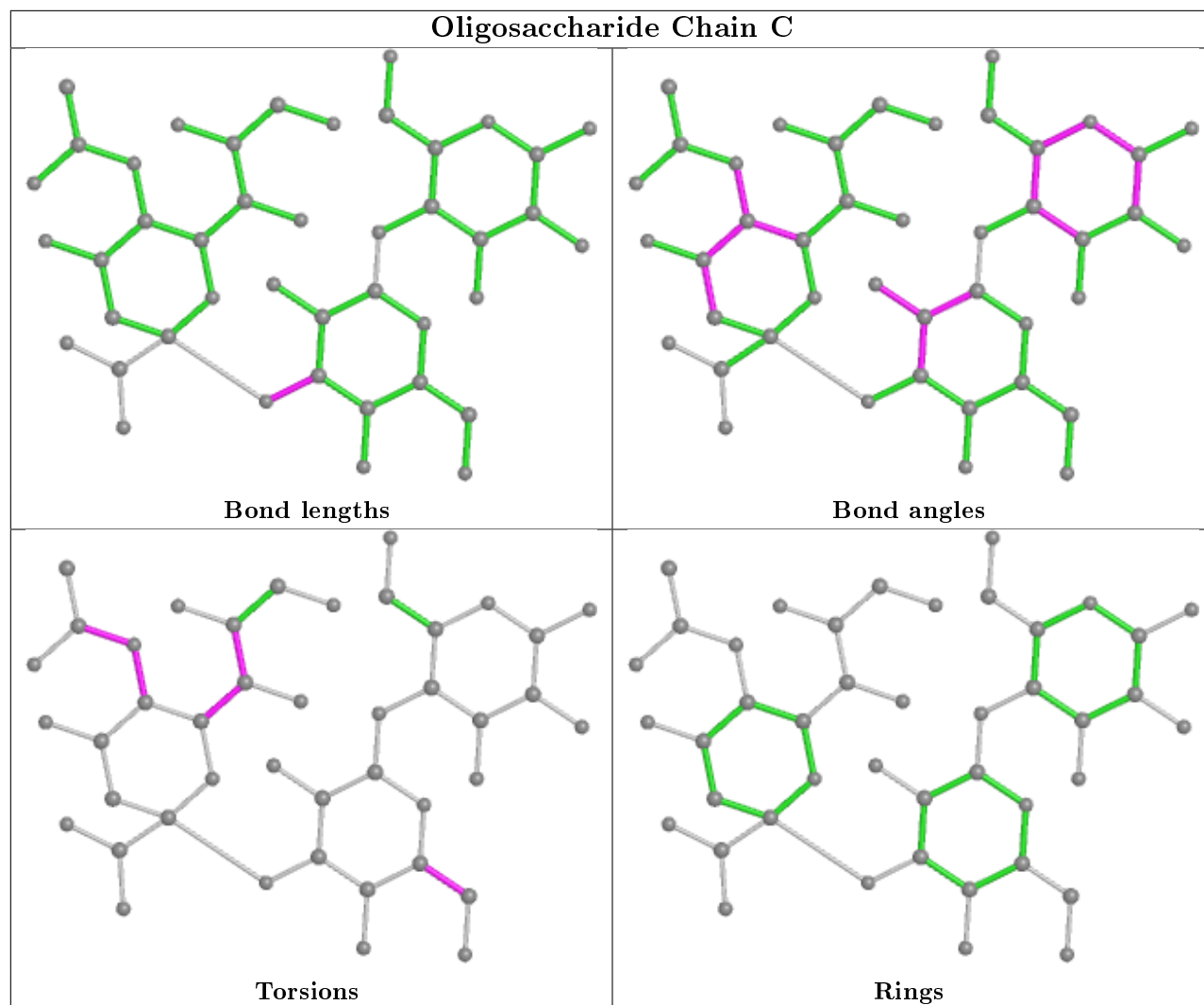
Mol	Chain	Res	Type	Atoms
2	C	3	SIA	C5-C6-C7-C8
2	C	3	SIA	C5-C6-C7-O7
2	C	3	SIA	O6-C6-C7-C8
2	C	3	SIA	O6-C6-C7-O7
2	C	3	SIA	C11-C10-N5-C5
2	C	3	SIA	O10-C10-N5-C5
3	D	1	BGC	C4-C5-C6-O6
3	D	1	BGC	O5-C5-C6-O6
2	C	3	SIA	O7-C7-C8-C9
3	D	2	GAL	O5-C5-C6-O6
2	C	2	GAL	O5-C5-C6-O6
2	C	3	SIA	C6-C7-C8-C9
2	C	3	SIA	O7-C7-C8-O8
2	C	3	SIA	C6-C5-N5-C10
2	C	3	SIA	C4-C5-N5-C10
2	C	3	SIA	C6-C7-C8-O8

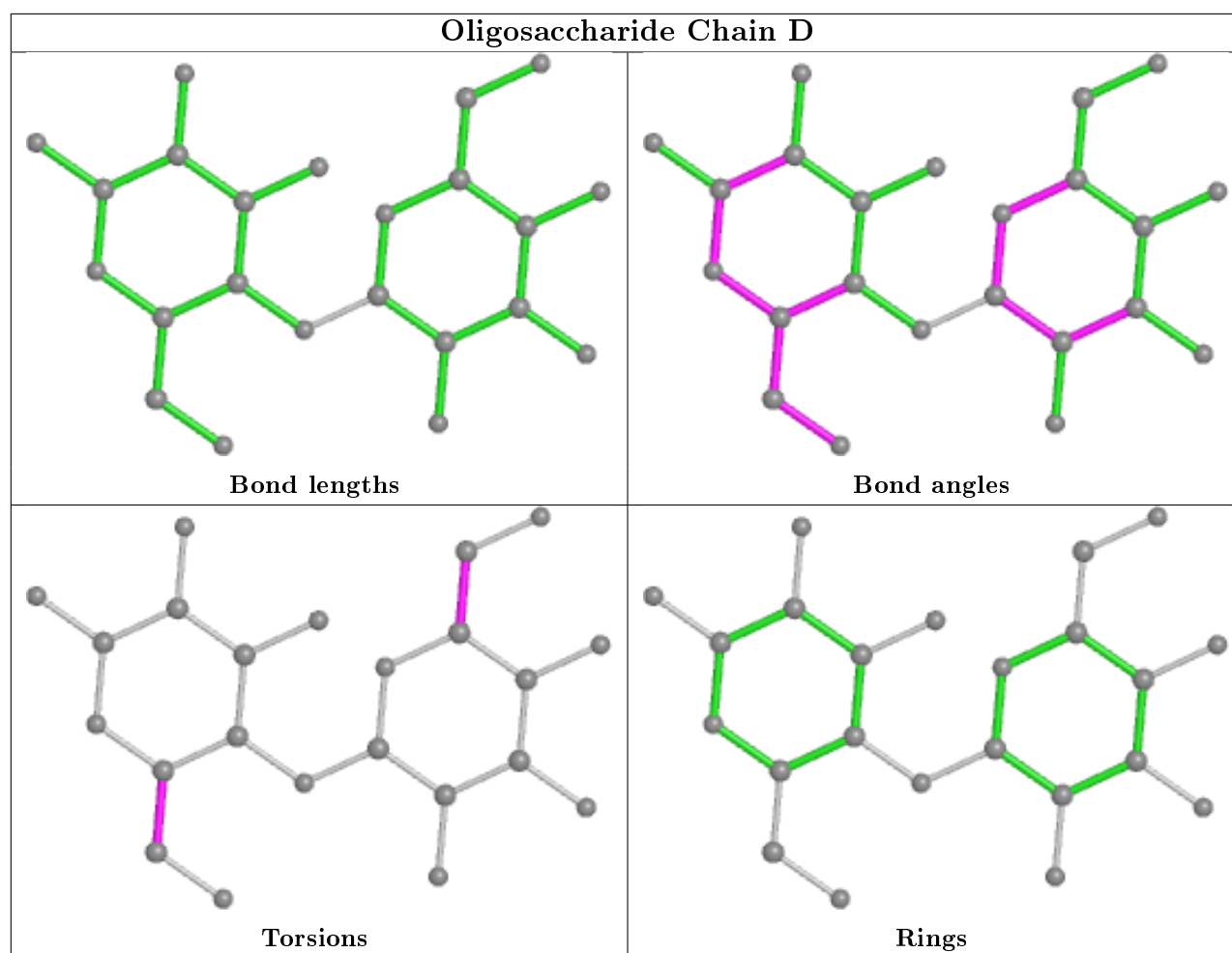
There are no ring outliers.

1 monomer is involved in 4 short contacts:

Mol	Chain	Res	Type	Clashes	Symm-Clashes
2	C	3	SIA	4	0

The following is a two-dimensional graphical depiction of Mogul quality analysis of bond lengths, bond angles, torsion angles, and ring geometry for oligosaccharide.





5.6 Ligand geometry [i](#)

Of 4 ligands modelled in this entry, 2 are monoatomic - leaving 2 for Mogul analysis.

In the following table, the Counts columns list the number of bonds (or angles) for which Mogul statistics could be retrieved, the number of bonds (or angles) that are observed in the model and the number of bonds (or angles) that are defined in the Chemical Component Dictionary. The Link column lists molecule types, if any, to which the group is linked. The Z score for a bond length (or angle) is the number of standard deviations the observed value is removed from the expected value. A bond length (or angle) with $|Z| > 2$ is considered an outlier worth inspection. RMSZ is the root-mean-square of all Z scores of the bond lengths (or angles).

Mol	Type	Chain	Res	Link	Bond lengths			Bond angles		
					Counts	RMSZ	$\# Z > 2$	Counts	RMSZ	$\# Z > 2$
5	18C	B	504	3	37,38,39	1.50	5 (13%)	39,40,41	1.03	0
5	18C	A	505	2	37,38,39	1.55	5 (13%)	39,40,41	1.08	1 (2%)

In the following table, the Chirals column lists the number of chiral outliers, the number of chiral centers analysed, the number of these observed in the model and the number defined in the

Chemical Component Dictionary. Similar counts are reported in the Torsion and Rings columns. '-' means no outliers of that kind were identified.

Mol	Type	Chain	Res	Link	Chirals	Torsions	Rings
5	18C	B	504	3	-	8/40/40/42	-
5	18C	A	505	2	-	10/40/40/42	-

All (10) bond length outliers are listed below:

Mol	Chain	Res	Type	Atoms	Z	Observed(Å)	Ideal(Å)
5	A	505	18C	C19-N2	6.12	1.47	1.34
5	B	504	18C	C19-N2	6.01	1.46	1.34
5	A	505	18C	C20-C19	3.12	1.57	1.51
5	B	504	18C	O19-C19	-3.01	1.17	1.23
5	A	505	18C	C3-C4	3.00	1.55	1.50
5	A	505	18C	O19-C19	-2.81	1.17	1.23
5	B	504	18C	C3-C4	2.78	1.54	1.50
5	B	504	18C	O3-C3	-2.76	1.38	1.43
5	A	505	18C	O3-C3	-2.49	1.38	1.43
5	B	504	18C	C20-C19	2.27	1.55	1.51

All (1) bond angle outliers are listed below:

Mol	Chain	Res	Type	Atoms	Z	Observed(°)	Ideal(°)
5	A	505	18C	C1-C2-C3	-2.10	110.68	112.67

There are no chirality outliers.

All (18) torsion outliers are listed below:

Mol	Chain	Res	Type	Atoms
5	B	504	18C	C10-C11-C12-C13
5	A	505	18C	C6-C7-C8-C9
5	B	504	18C	C7-C8-C9-C10
5	B	504	18C	C11-C10-C9-C8
5	A	505	18C	C13-C14-C15-C16
5	A	505	18C	C10-C11-C12-C13
5	A	505	18C	C32-C33-C34-C35
5	B	504	18C	C12-C13-C14-C15
5	A	505	18C	C11-C10-C9-C8
5	A	505	18C	C27-C28-C29-C30
5	B	504	18C	C15-C16-C17-C18
5	A	505	18C	C14-C15-C16-C17
5	B	504	18C	C6-C7-C8-C9

Continued on next page...

Continued from previous page...

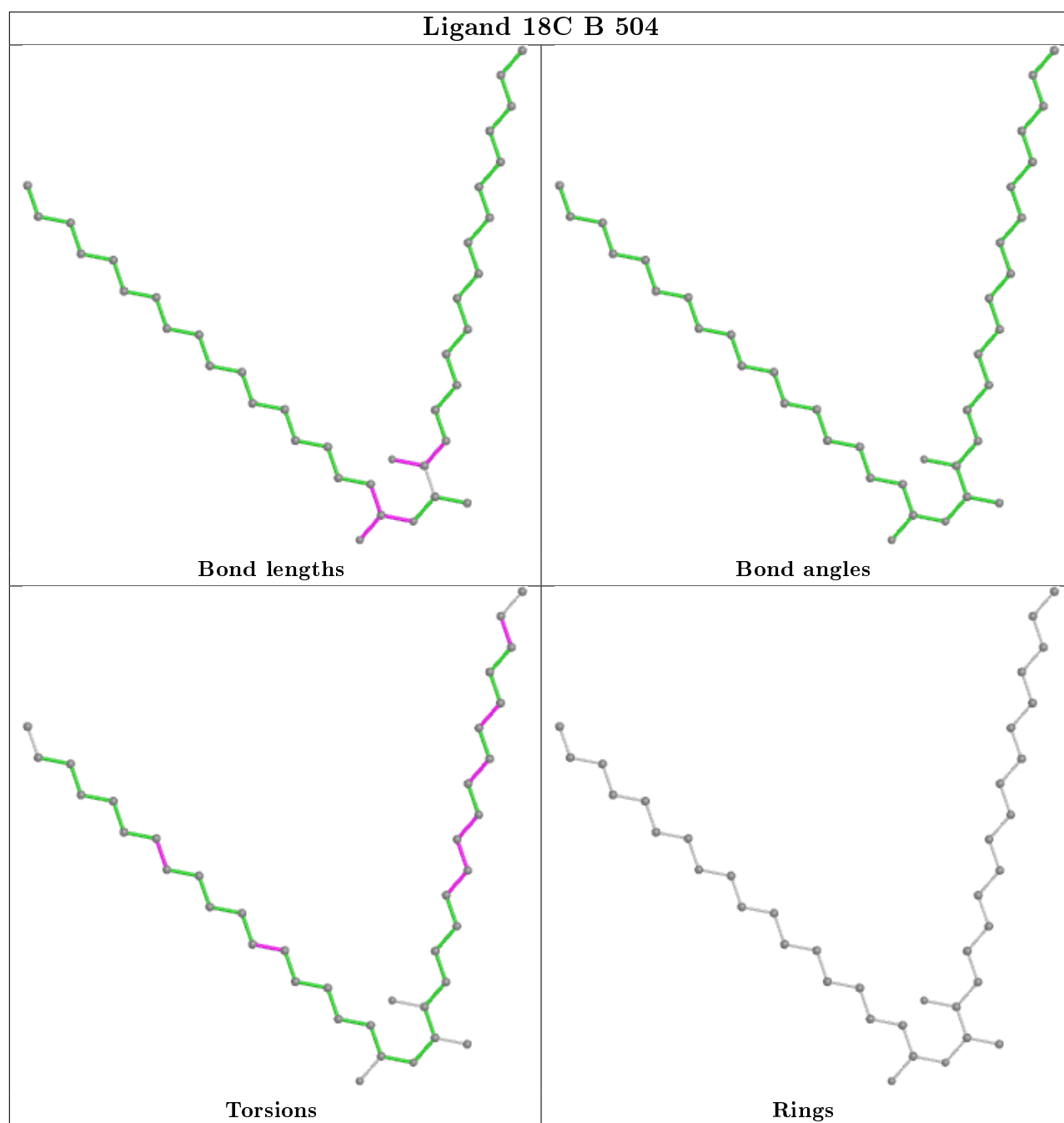
Mol	Chain	Res	Type	Atoms
5	A	505	18C	C28-C29-C30-C31
5	A	505	18C	C15-C16-C17-C18
5	B	504	18C	C23-C24-C25-C26
5	B	504	18C	C28-C29-C30-C31
5	A	505	18C	C23-C24-C25-C26

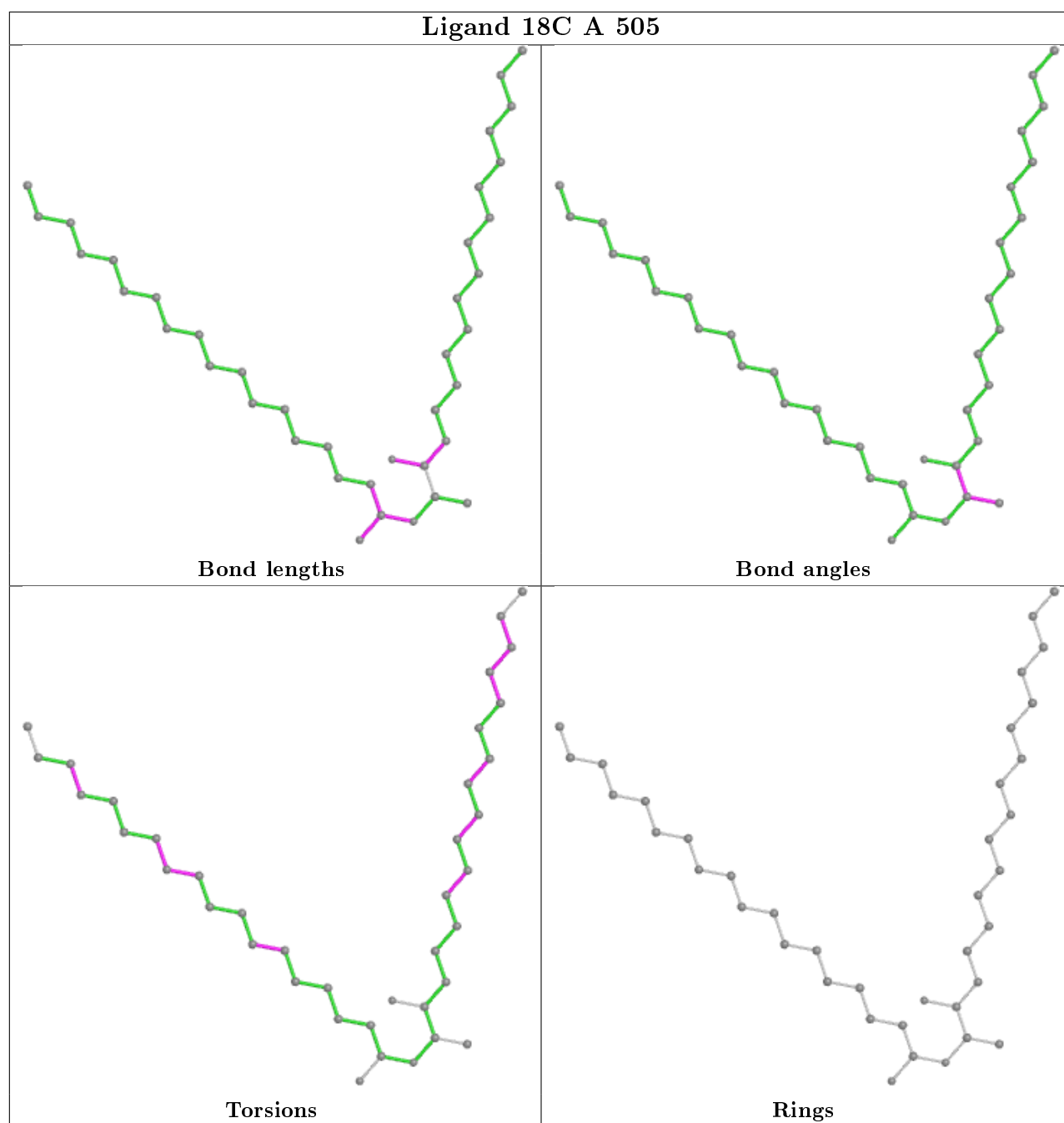
There are no ring outliers.

2 monomers are involved in 20 short contacts:

Mol	Chain	Res	Type	Clashes	Symm-Clashes
5	B	504	18C	12	0
5	A	505	18C	11	0

The following is a two-dimensional graphical depiction of Mogul quality analysis of bond lengths, bond angles, torsion angles, and ring geometry for all instances of the Ligand of Interest. In addition, ligands with molecular weight > 250 and outliers as shown on the validation Tables will also be included. For torsion angles, if less than 5% of the Mogul distribution of torsion angles is within 10 degrees of the torsion angle in question, then that torsion angle is considered an outlier. Any bond that is central to one or more torsion angles identified as an outlier by Mogul will be highlighted in the graph. For rings, the root-mean-square deviation (RMSD) between the ring in question and similar rings identified by Mogul is calculated over all ring torsion angles. If the average RMSD is greater than 60 degrees and the minimal RMSD between the ring in question and any Mogul-identified rings is also greater than 60 degrees, then that ring is considered an outlier. The outliers are highlighted in purple. The color gray indicates Mogul did not find sufficient equivalents in the CSD to analyse the geometry.





5.7 Other polymers [i](#)

There are no such residues in this entry.

5.8 Polymer linkage issues [i](#)

There are no chain breaks in this entry.

6 Fit of model and data [i](#)

6.1 Protein, DNA and RNA chains [i](#)

In the following table, the column labelled ‘#RSRZ> 2’ contains the number (and percentage) of RSRZ outliers, followed by percent RSRZ outliers for the chain as percentile scores relative to all X-ray entries and entries of similar resolution. The OWAB column contains the minimum, median, 95th percentile and maximum values of the occupancy-weighted average B-factor per residue. The column labelled ‘Q< 0.9’ lists the number of (and percentage) of residues with an average occupancy less than 0.9.

Mol	Chain	Analysed	<RSRZ>	#RSRZ>2	OWAB(Å ²)	Q<0.9
1	A	450/500 (90%)	-0.35	1 (0%) 95 95	6, 12, 21, 45	0
1	B	434/500 (86%)	-0.37	6 (1%) 75 77	6, 11, 23, 39	0
All	All	884/1000 (88%)	-0.36	7 (0%) 86 87	6, 12, 23, 45	0

All (7) RSRZ outliers are listed below:

Mol	Chain	Res	Type	RSRZ
1	B	156	TRP	5.5
1	A	29	PRO	3.7
1	B	470	GLY	2.6
1	B	31	THR	2.6
1	B	155	GLU	2.5
1	B	343	GLY	2.5
1	B	344	ASP	2.2

6.2 Non-standard residues in protein, DNA, RNA chains [i](#)

There are no non-standard protein/DNA/RNA residues in this entry.

6.3 Carbohydrates [i](#)

In the following table, the Atoms column lists the number of modelled atoms in the group and the number defined in the chemical component dictionary. The B-factors column lists the minimum, median, 95th percentile and maximum values of B factors of atoms in the group. The column labelled ‘Q< 0.9’ lists the number of atoms with occupancy less than 0.9.

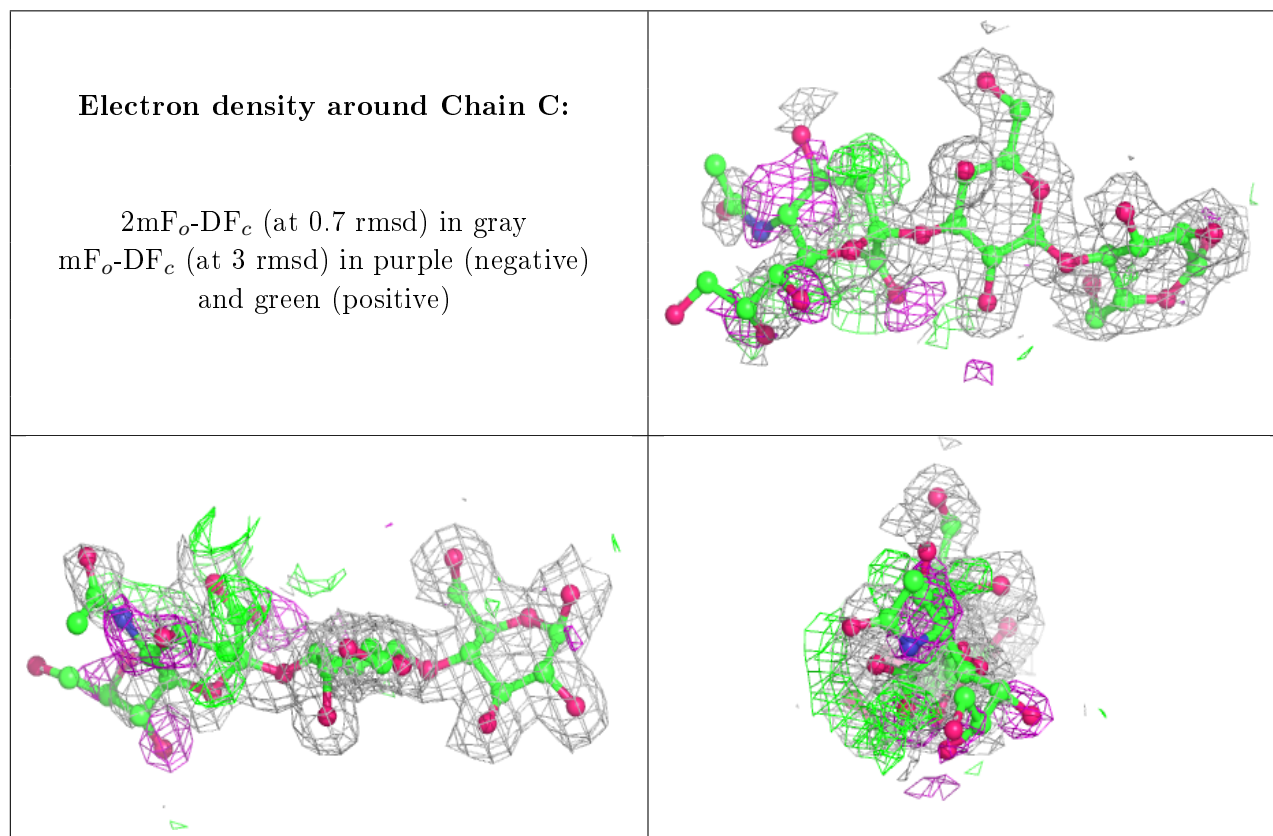
Mol	Type	Chain	Res	Atoms	RSCC	RSR	B-factors(Å ²)	Q<0.9
2	SIA	C	3	20/21	0.58	0.43	29,42,45,46	0
3	GAL	D	2	11/12	0.90	0.12	19,20,21,21	0

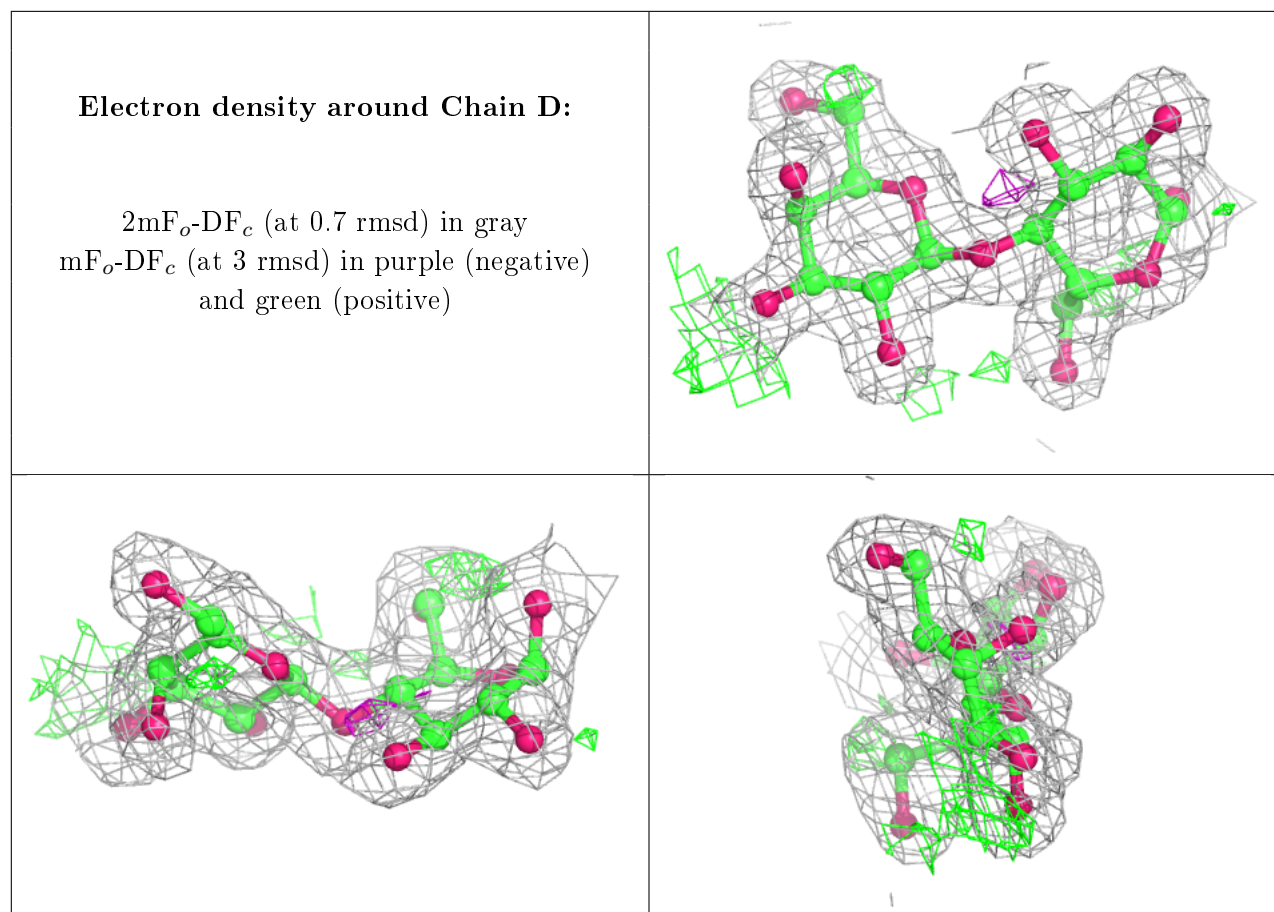
Continued on next page...

Continued from previous page...

Mol	Type	Chain	Res	Atoms	RSCC	RSR	B-factors(\AA^2)	Q<0.9
3	BGC	D	1	12/12	0.90	0.11	19,20,23,26	0
2	GAL	C	2	11/12	0.95	0.07	13,14,16,23	0
2	BGC	C	1	12/12	0.95	0.09	12,14,16,16	0

The following is a graphical depiction of the model fit to experimental electron density for oligosaccharide. Each fit is shown from different orientation to approximate a three-dimensional view.





6.4 Ligands ⓘ

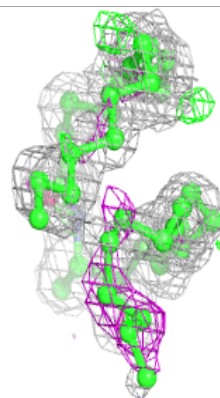
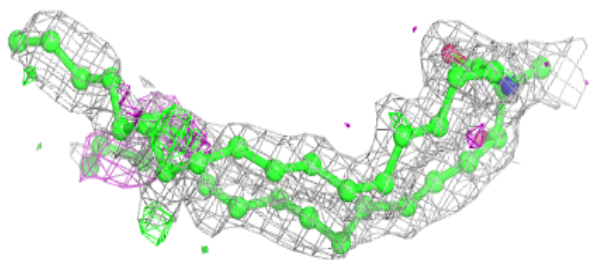
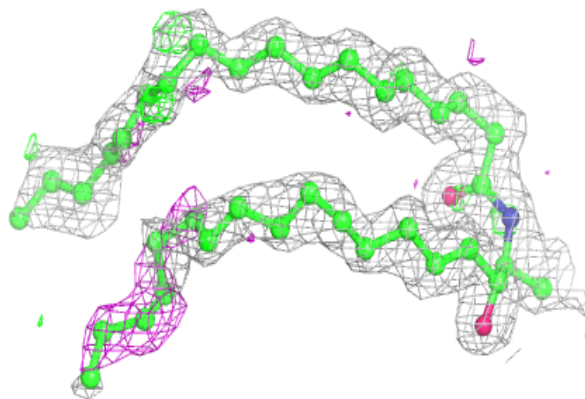
In the following table, the Atoms column lists the number of modelled atoms in the group and the number defined in the chemical component dictionary. The B-factors column lists the minimum, median, 95th percentile and maximum values of B factors of atoms in the group. The column labelled 'Q<0.9' lists the number of atoms with occupancy less than 0.9.

Mol	Type	Chain	Res	Atoms	RSCC	RSR	B-factors(Å ²)	Q<0.9
5	18C	A	505	39/40	0.77	0.22	20,20,20,20	0
5	18C	B	504	39/40	0.79	0.18	20,20,20,20	0
4	NA	B	503	1/1	0.89	0.50	30,30,30,30	0
4	NA	A	504	1/1	0.96	0.51	30,30,30,30	0

The following is a graphical depiction of the model fit to experimental electron density of all instances of the Ligand of Interest. In addition, ligands with molecular weight > 250 and outliers as shown on the geometry validation Tables will also be included. Each fit is shown from different orientation to approximate a three-dimensional view.

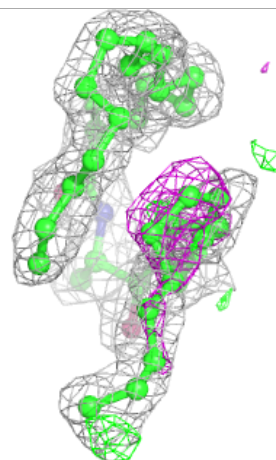
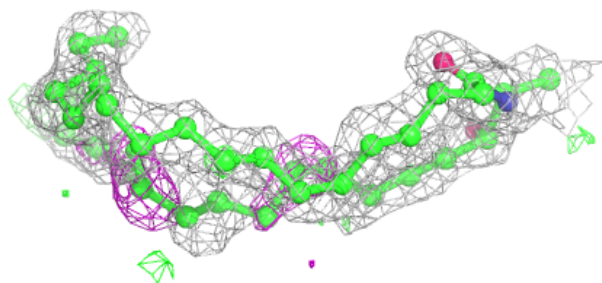
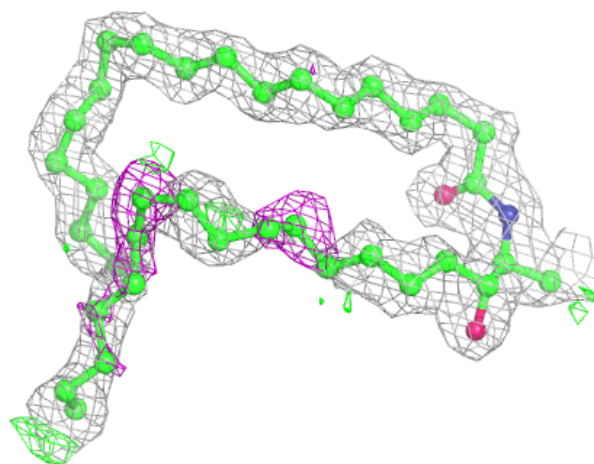
Electron density around 18C A 505:

$2mF_o-DF_c$ (at 0.7 rmsd) in gray
 mF_o-DF_c (at 3 rmsd) in purple (negative)
and green (positive)



Electron density around 18C B 504:

$2mF_o-DF_c$ (at 0.7 rmsd) in gray
 mF_o-DF_c (at 3 rmsd) in purple (negative)
and green (positive)



6.5 Other polymers [i](#)

There are no such residues in this entry.