



Full wwPDB X-ray Structure Validation Report ⓘ

May 16, 2020 – 07:02 am BST

PDB ID : 6J17
Title : ATPase
Authors : Wang, S.H.; Li, J.; Rao, Z.H.
Deposited on : 2018-12-28
Resolution : 1.98 Å(reported)

This is a Full wwPDB X-ray Structure Validation Report for a publicly released PDB entry.

We welcome your comments at validation@mail.wwpdb.org

A user guide is available at

<https://www.wwpdb.org/validation/2017/XrayValidationReportHelp>

with specific help available everywhere you see the ⓘ symbol.

The following versions of software and data (see [references ⓘ](#)) were used in the production of this report:

MolProbity : 4.02b-467
Mogul : 1.8.5 (274361), CSD as541be (2020)
Xtriage (Phenix) : 1.13
EDS : 2.11
buster-report : 1.1.7 (2018)
Percentile statistics : 20191225.v01 (using entries in the PDB archive December 25th 2019)
Refmac : 5.8.0158
CCP4 : 7.0.044 (Gargrove)
Ideal geometry (proteins) : Engh & Huber (2001)
Ideal geometry (DNA, RNA) : Parkinson et al. (1996)
Validation Pipeline (wwPDB-VP) : 2.11

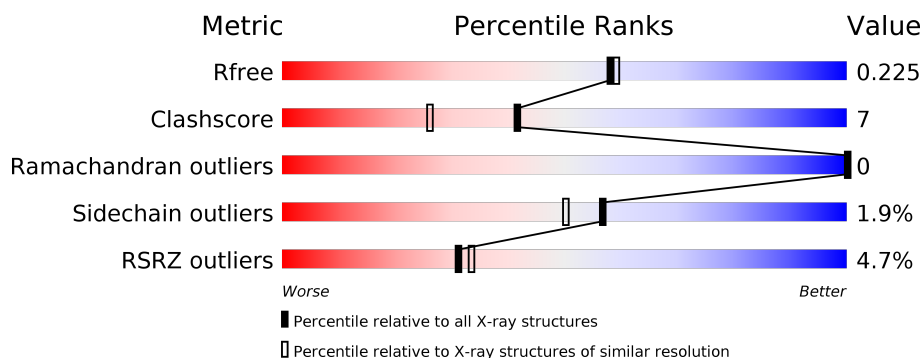
1 Overall quality at a glance

The following experimental techniques were used to determine the structure:

X-RAY DIFFRACTION

The reported resolution of this entry is 1.98 Å.

Percentile scores (ranging between 0-100) for global validation metrics of the entry are shown in the following graphic. The table shows the number of entries on which the scores are based.



Metric	Whole archive (#Entries)	Similar resolution (#Entries, resolution range(Å))
R_{free}	130704	11647 (2.00-1.96)
Clashscore	141614	1014 (1.98-1.98)
Ramachandran outliers	138981	1006 (1.98-1.98)
Sidechain outliers	138945	1006 (1.98-1.98)
RSRZ outliers	127900	11410 (2.00-1.96)

The table below summarises the geometric issues observed across the polymeric chains and their fit to the electron density. The red, orange, yellow and green segments on the lower bar indicate the fraction of residues that contain outliers for ≥ 3 , 2, 1 and 0 types of geometric quality criteria respectively. A grey segment represents the fraction of residues that are not modelled. The numeric value for each fraction is indicated below the corresponding segment, with a dot representing fractions $\leq 5\%$. The upper red bar (where present) indicates the fraction of residues that have poor fit to the electron density. The numeric value is given above the bar.

Mol	Chain	Length	Quality of chain
1	A	324	<div> <div>4%</div> <div>69%</div> <div>9%</div> <div>22%</div> </div>

2 Entry composition

There are 4 unique types of molecules in this entry. The entry contains 2135 atoms, of which 0 are hydrogens and 0 are deuteriums.

In the tables below, the ZeroOcc column contains the number of atoms modelled with zero occupancy, the AltConf column contains the number of residues with at least one atom in alternate conformation and the Trace column contains the number of residues modelled with at most 2 atoms.

- Molecule 1 is a protein called ESX-3 secretion system protein EccC3.

Mol	Chain	Residues	Atoms					ZeroOcc	AltConf	Trace
1	A	254	Total	C	N	O	S	0	0	0
			1955	1237	356	356	6			

There are 45 discrepancies between the modelled and reference sequences:

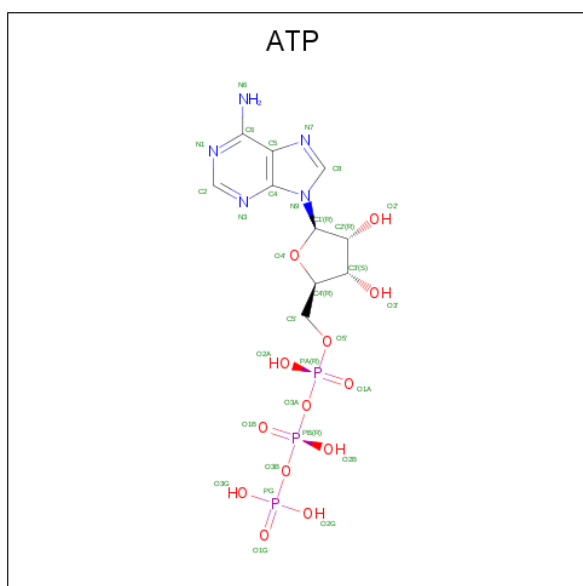
Chain	Residue	Modelled	Actual	Comment	Reference
A	1015	MET	-	initiating methionine	UNP P9WNA9
A	1016	LYS	-	expression tag	UNP P9WNA9
A	1017	TYR	-	expression tag	UNP P9WNA9
A	1018	LEU	-	expression tag	UNP P9WNA9
A	1019	LEU	-	expression tag	UNP P9WNA9
A	1020	PRO	-	expression tag	UNP P9WNA9
A	1021	THR	-	expression tag	UNP P9WNA9
A	1022	ALA	-	expression tag	UNP P9WNA9
A	1023	ALA	-	expression tag	UNP P9WNA9
A	1024	ALA	-	expression tag	UNP P9WNA9
A	1025	GLY	-	expression tag	UNP P9WNA9
A	1026	LEU	-	expression tag	UNP P9WNA9
A	1027	LEU	-	expression tag	UNP P9WNA9
A	1028	LEU	-	expression tag	UNP P9WNA9
A	1029	LEU	-	expression tag	UNP P9WNA9
A	1030	ALA	-	expression tag	UNP P9WNA9
A	1031	ALA	-	expression tag	UNP P9WNA9
A	1032	GLN	-	expression tag	UNP P9WNA9
A	1033	PRO	-	expression tag	UNP P9WNA9
A	1034	ALA	-	expression tag	UNP P9WNA9
A	1035	MET	-	expression tag	UNP P9WNA9
A	1036	ALA	-	expression tag	UNP P9WNA9
A	1037	MET	-	expression tag	UNP P9WNA9
A	1038	ASP	-	expression tag	UNP P9WNA9
A	1039	SER	-	expression tag	UNP P9WNA9
A	1040	SER	-	expression tag	UNP P9WNA9
A	1041	GLY	-	expression tag	UNP P9WNA9

Continued on next page...

Continued from previous page...

Chain	Residue	Modelled	Actual	Comment	Reference
A	1042	LEU	-	expression tag	UNP P9WNA9
A	1043	GLU	-	expression tag	UNP P9WNA9
A	1044	VAL	-	expression tag	UNP P9WNA9
A	1045	LEU	-	expression tag	UNP P9WNA9
A	1046	PHE	-	expression tag	UNP P9WNA9
A	1047	GLN	-	expression tag	UNP P9WNA9
A	1048	GLY	-	expression tag	UNP P9WNA9
A	1049	PRO	-	expression tag	UNP P9WNA9
A	1050	GLY	-	expression tag	UNP P9WNA9
A	1051	SER	-	expression tag	UNP P9WNA9
A	1331	LEU	-	expression tag	UNP P9WNA9
A	1332	GLU	-	expression tag	UNP P9WNA9
A	1333	HIS	-	expression tag	UNP P9WNA9
A	1334	HIS	-	expression tag	UNP P9WNA9
A	1335	HIS	-	expression tag	UNP P9WNA9
A	1336	HIS	-	expression tag	UNP P9WNA9
A	1337	HIS	-	expression tag	UNP P9WNA9
A	1338	HIS	-	expression tag	UNP P9WNA9

- Molecule 2 is ADENOSINE-5'-TRIPHOSPHATE (three-letter code: ATP) (formula: $C_{10}H_{16}N_5O_{13}P_3$) (labeled as "Ligand of Interest" by author).



Mol	Chain	Residues	Atoms					ZeroOcc	AltConf
2	A	1	Total	C	N	O	P	0	0
			31	10	5	13	3		

- Molecule 3 is MAGNESIUM ION (three-letter code: MG) (formula: Mg) (labeled as "Ligand

of Interest" by author).

Mol	Chain	Residues	Atoms		ZeroOcc	AltConf
3	A	1	Total 1	Mg 1	0	0

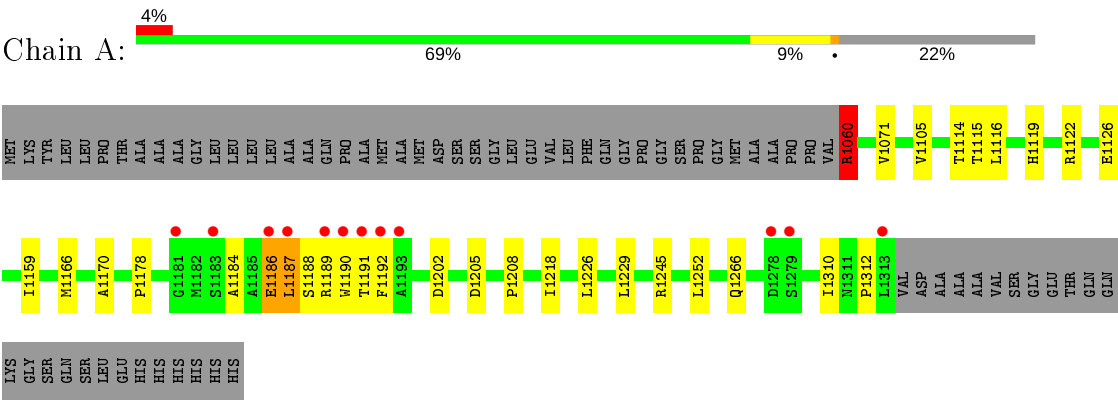
- Molecule 4 is water.

Mol	Chain	Residues	Atoms		ZeroOcc	AltConf
4	A	148	Total 148	O 148	0	0

3 Residue-property plots [i](#)

These plots are drawn for all protein, RNA and DNA chains in the entry. The first graphic for a chain summarises the proportions of the various outlier classes displayed in the second graphic. The second graphic shows the sequence view annotated by issues in geometry and electron density. Residues are color-coded according to the number of geometric quality criteria for which they contain at least one outlier: green = 0, yellow = 1, orange = 2 and red = 3 or more. A red dot above a residue indicates a poor fit to the electron density ($RSRZ > 2$). Stretches of 2 or more consecutive residues without any outlier are shown as a green connector. Residues present in the sample, but not in the model, are shown in grey.

- Molecule 1: ESX-3 secretion system protein EccC3



4 Data and refinement statistics

Property	Value	Source
Space group	P 21 21 21	Depositor
Cell constants a, b, c, α , β , γ	53.36 Å 56.63 Å 93.53 Å 90.00° 90.00° 90.00°	Depositor
Resolution (Å)	46.35 – 1.98 46.35 – 1.98	Depositor EDS
% Data completeness (in resolution range)	93.5 (46.35-1.98) 93.6 (46.35-1.98)	Depositor EDS
R_{merge}	0.12	Depositor
R_{sym}	(Not available)	Depositor
$\langle I/\sigma(I) \rangle$ ¹	2.25 (at 1.98 Å)	Xtriage
Refinement program	PHENIX 1.12_2829	Depositor
R, R_{free}	0.181 , 0.228 0.181 , 0.225	Depositor DCC
R_{free} test set	932 reflections (4.85%)	wwPDB-VP
Wilson B-factor (Å ²)	30.1	Xtriage
Anisotropy	0.555	Xtriage
Bulk solvent k_{sol} (e/Å ³), B_{sol} (Å ²)	0.31 , 43.9	EDS
L-test for twinning ²	$\langle L \rangle = 0.49$, $\langle L^2 \rangle = 0.32$	Xtriage
Estimated twinning fraction	No twinning to report.	Xtriage
F_o, F_c correlation	0.96	EDS
Total number of atoms	2135	wwPDB-VP
Average B, all atoms (Å ²)	44.0	wwPDB-VP

Xtriage's analysis on translational NCS is as follows: *The largest off-origin peak in the Patterson function is 6.63% of the height of the origin peak. No significant pseudotranslation is detected.*

¹Intensities estimated from amplitudes.

²Theoretical values of $\langle |L| \rangle$, $\langle L^2 \rangle$ for acentric reflections are 0.5, 0.333 respectively for untwinned datasets, and 0.375, 0.2 for perfectly twinned datasets.

5 Model quality [i](#)

5.1 Standard geometry [i](#)

Bond lengths and bond angles in the following residue types are not validated in this section: MG, ATP

The Z score for a bond length (or angle) is the number of standard deviations the observed value is removed from the expected value. A bond length (or angle) with $|Z| > 5$ is considered an outlier worth inspection. RMSZ is the root-mean-square of all Z scores of the bond lengths (or angles).

Mol	Chain	Bond lengths		Bond angles	
		RMSZ	$\# Z > 5$	RMSZ	$\# Z > 5$
1	A	0.67	2/1996 (0.1%)	0.77	1/2724 (0.0%)

All (2) bond length outliers are listed below:

Mol	Chain	Res	Type	Atoms	Z	Observed(Å)	Ideal(Å)
1	A	1060	ARG	CD-NE	-5.31	1.37	1.46
1	A	1060	ARG	CA-CB	-5.03	1.42	1.53

All (1) bond angle outliers are listed below:

Mol	Chain	Res	Type	Atoms	Z	Observed($^{\circ}$)	Ideal($^{\circ}$)
1	A	1060	ARG	CG-CD-NE	-5.17	100.94	111.80

There are no chirality outliers.

There are no planarity outliers.

5.2 Too-close contacts [i](#)

In the following table, the Non-H and H(model) columns list the number of non-hydrogen atoms and hydrogen atoms in the chain respectively. The H(added) column lists the number of hydrogen atoms added and optimized by MolProbity. The Clashes column lists the number of clashes within the asymmetric unit, whereas Symm-Clashes lists symmetry related clashes.

Mol	Chain	Non-H	H(model)	H(added)	Clashes	Symm-Clashes
1	A	1955	0	1994	28	0
2	A	31	0	12	0	0
3	A	1	0	0	0	0
4	A	148	0	0	0	0
All	All	2135	0	2006	28	0

The all-atom clashscore is defined as the number of clashes found per 1000 atoms (including hydrogen atoms). The all-atom clashscore for this structure is 7.

All (28) close contacts within the same asymmetric unit are listed below, sorted by their clash magnitude.

Atom-1	Atom-2	Interatomic distance (Å)	Clash overlap (Å)
1:A:1159:ILE:HD11	1:A:1208:PRO:HD2	1.72	0.71
1:A:1186:GLU:OE1	1:A:1186:GLU:N	2.26	0.69
1:A:1191:THR:HG22	1:A:1192:PHE:H	1.59	0.66
1:A:1191:THR:HG22	1:A:1192:PHE:N	2.12	0.65
1:A:1122:ARG:O	1:A:1126:GLU:HG2	1.96	0.65
1:A:1184:ALA:HA	1:A:1187:LEU:CD2	2.28	0.63
1:A:1218:ILE:O	1:A:1218:ILE:HD12	2.03	0.59
1:A:1205:ASP:OD2	1:A:1245:ARG:HG3	2.02	0.59
1:A:1115:THR:HG23	1:A:1312:PRO:HD2	1.90	0.53
1:A:1060:ARG:NH1	1:A:1060:ARG:CG	2.71	0.50
1:A:1187:LEU:H	1:A:1187:LEU:HD23	1.75	0.50
1:A:1186:GLU:C	1:A:1188:SER:H	2.14	0.50
1:A:1184:ALA:O	1:A:1187:LEU:HD21	2.13	0.49
1:A:1191:THR:CG2	1:A:1192:PHE:H	2.21	0.48
1:A:1178:PRO:HA	1:A:1190:TRP:CZ2	2.47	0.48
1:A:1252:LEU:HA	1:A:1252:LEU:HD23	1.76	0.47
1:A:1071:VAL:HG21	1:A:1310:ILE:HD11	1.97	0.47
1:A:1184:ALA:C	1:A:1187:LEU:HD21	2.35	0.46
1:A:1186:GLU:C	1:A:1188:SER:N	2.70	0.45
1:A:1119:HIS:HB2	1:A:1312:PRO:HG3	2.01	0.42
1:A:1166:MET:SD	1:A:1226:LEU:HD11	2.60	0.42
1:A:1187:LEU:HD12	1:A:1187:LEU:O	2.20	0.42
1:A:1105:VAL:HG21	1:A:1116:LEU:HD23	2.03	0.41
1:A:1189:ARG:HG2	1:A:1189:ARG:O	2.21	0.41
1:A:1184:ALA:CA	1:A:1187:LEU:CD2	2.99	0.40
1:A:1170:ALA:HA	1:A:1229:LEU:HD11	2.03	0.40
1:A:1205:ASP:OD1	1:A:1205:ASP:N	2.55	0.40
1:A:1114:THR:OG1	1:A:1202:ASP:OD2	2.38	0.40

There are no symmetry-related clashes.

5.3 Torsion angles

5.3.1 Protein backbone

In the following table, the Percentiles column shows the percent Ramachandran outliers of the chain as a percentile score with respect to all X-ray entries followed by that with respect to entries

of similar resolution.

The Analysed column shows the number of residues for which the backbone conformation was analysed, and the total number of residues.

Mol	Chain	Analysed	Favoured	Allowed	Outliers	Percentiles	
1	A	252/324 (78%)	244 (97%)	8 (3%)	0	100	100

There are no Ramachandran outliers to report.

5.3.2 Protein sidechains ⓘ

In the following table, the Percentiles column shows the percent sidechain outliers of the chain as a percentile score with respect to all X-ray entries followed by that with respect to entries of similar resolution.

The Analysed column shows the number of residues for which the sidechain conformation was analysed, and the total number of residues.

Mol	Chain	Analysed	Rotameric	Outliers	Percentiles	
1	A	208/259 (80%)	204 (98%)	4 (2%)	57	50

All (4) residues with a non-rotameric sidechain are listed below:

Mol	Chain	Res	Type
1	A	1060	ARG
1	A	1186	GLU
1	A	1187	LEU
1	A	1266	GLN

Some sidechains can be flipped to improve hydrogen bonding and reduce clashes. All (1) such sidechains are listed below:

Mol	Chain	Res	Type
1	A	1085	GLN

5.3.3 RNA ⓘ

There are no RNA molecules in this entry.

5.4 Non-standard residues in protein, DNA, RNA chains ⓘ

There are no non-standard protein/DNA/RNA residues in this entry.

5.5 Carbohydrates

There are no carbohydrates in this entry.

5.6 Ligand geometry

Of 2 ligands modelled in this entry, 1 is monoatomic - leaving 1 for Mogul analysis.

In the following table, the Counts columns list the number of bonds (or angles) for which Mogul statistics could be retrieved, the number of bonds (or angles) that are observed in the model and the number of bonds (or angles) that are defined in the Chemical Component Dictionary. The Link column lists molecule types, if any, to which the group is linked. The Z score for a bond length (or angle) is the number of standard deviations the observed value is removed from the expected value. A bond length (or angle) with $|Z| > 2$ is considered an outlier worth inspection. RMSZ is the root-mean-square of all Z scores of the bond lengths (or angles).

Mol	Type	Chain	Res	Link	Bond lengths			Bond angles		
					Counts	RMSZ	$\# Z > 2$	Counts	RMSZ	$\# Z > 2$
2	ATP	A	1401	3	26,33,33	1.29	3 (11%)	31,52,52	1.55	4 (12%)

In the following table, the Chirals column lists the number of chiral outliers, the number of chiral centers analysed, the number of these observed in the model and the number defined in the Chemical Component Dictionary. Similar counts are reported in the Torsion and Rings columns. '-' means no outliers of that kind were identified.

Mol	Type	Chain	Res	Link	Chirals	Torsions	Rings
2	ATP	A	1401	3	-	0/18/38/38	0/3/3/3

All (3) bond length outliers are listed below:

Mol	Chain	Res	Type	Atoms	Z	Observed(Å)	Ideal(Å)
2	A	1401	ATP	C2-N1	2.70	1.38	1.33
2	A	1401	ATP	C2-N3	2.52	1.36	1.32
2	A	1401	ATP	C5-C4	2.25	1.46	1.40

All (4) bond angle outliers are listed below:

Mol	Chain	Res	Type	Atoms	Z	Observed(°)	Ideal(°)
2	A	1401	ATP	N3-C2-N1	-4.64	121.42	128.68
2	A	1401	ATP	C1'-N9-C4	-2.41	122.41	126.64
2	A	1401	ATP	PA-O3A-PB	-2.40	124.58	132.83
2	A	1401	ATP	N6-C6-N1	2.33	123.41	118.57

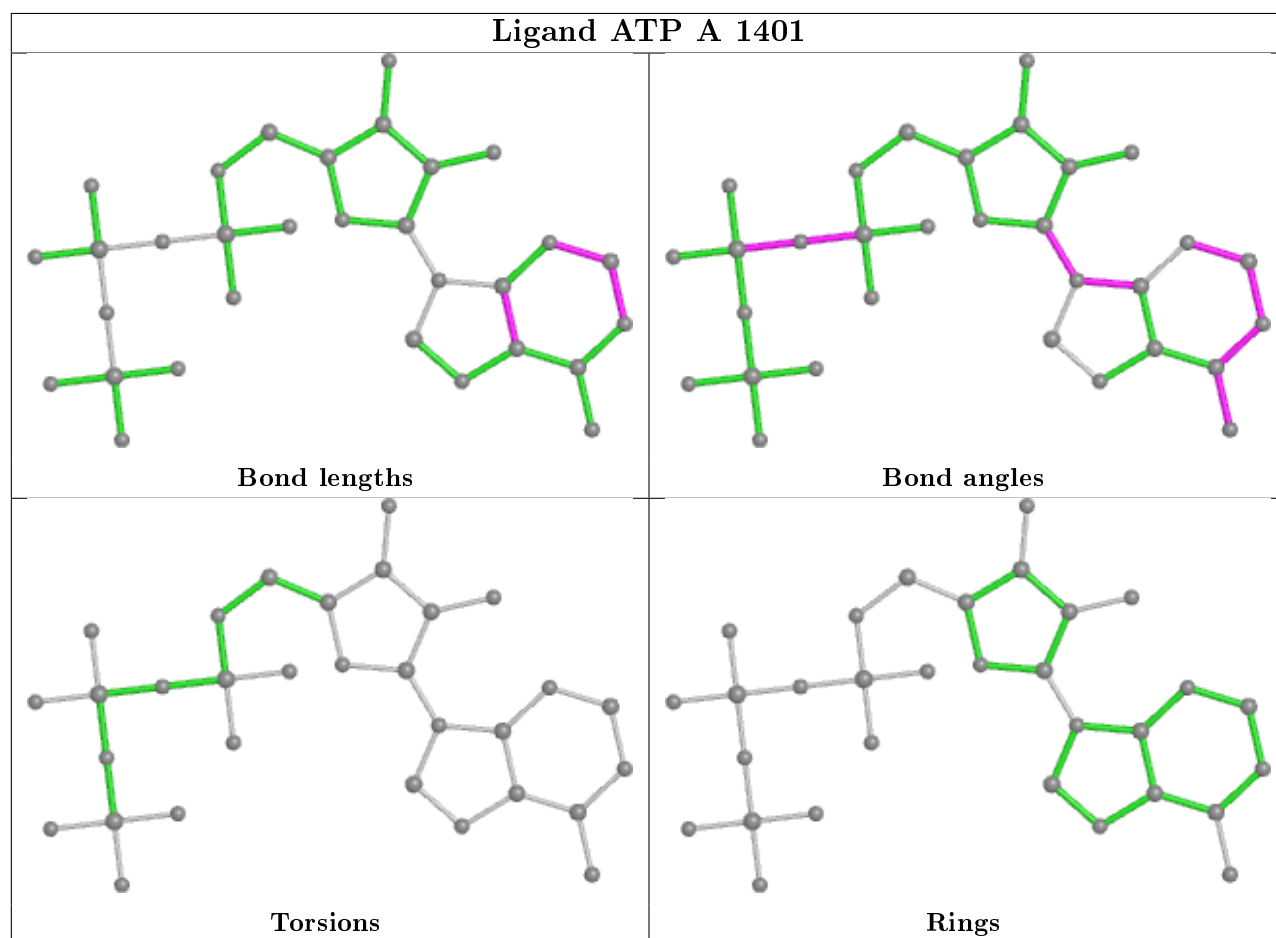
There are no chirality outliers.

There are no torsion outliers.

There are no ring outliers.

No monomer is involved in short contacts.

The following is a two-dimensional graphical depiction of Mogul quality analysis of bond lengths, bond angles, torsion angles, and ring geometry for all instances of the Ligand of Interest. In addition, ligands with molecular weight > 250 and outliers as shown on the validation Tables will also be included. For torsion angles, if less than 5% of the Mogul distribution of torsion angles is within 10 degrees of the torsion angle in question, then that torsion angle is considered an outlier. Any bond that is central to one or more torsion angles identified as an outlier by Mogul will be highlighted in the graph. For rings, the root-mean-square deviation (RMSD) between the ring in question and similar rings identified by Mogul is calculated over all ring torsion angles. If the average RMSD is greater than 60 degrees and the minimal RMSD between the ring in question and any Mogul-identified rings is also greater than 60 degrees, then that ring is considered an outlier. The outliers are highlighted in purple. The color gray indicates Mogul did not find sufficient equivalents in the CSD to analyse the geometry.



5.7 Other polymers ⓘ

There are no such residues in this entry.

5.8 Polymer linkage issues ⓘ

There are no chain breaks in this entry.

6 Fit of model and data [i](#)

6.1 Protein, DNA and RNA chains [i](#)

In the following table, the column labelled ‘#RSRZ> 2’ contains the number (and percentage) of RSRZ outliers, followed by percent RSRZ outliers for the chain as percentile scores relative to all X-ray entries and entries of similar resolution. The OWAB column contains the minimum, median, 95th percentile and maximum values of the occupancy-weighted average B-factor per residue. The column labelled ‘Q< 0.9’ lists the number of (and percentage) of residues with an average occupancy less than 0.9.

Mol	Chain	Analysed	<RSRZ>	#RSRZ>2	OWAB(Å ²)	Q<0.9
1	A	254/324 (78%)	0.14	12 (4%) 31 33	21, 40, 83, 132	0

All (12) RSRZ outliers are listed below:

Mol	Chain	Res	Type	RSRZ
1	A	1189	ARG	7.7
1	A	1191	THR	5.3
1	A	1190	TRP	5.1
1	A	1313	LEU	4.6
1	A	1183	SER	4.6
1	A	1278	ASP	4.0
1	A	1279	SER	3.8
1	A	1187	LEU	3.4
1	A	1193	ALA	3.2
1	A	1181	GLY	2.5
1	A	1186	GLU	2.4
1	A	1192	PHE	2.2

6.2 Non-standard residues in protein, DNA, RNA chains [i](#)

There are no non-standard protein/DNA/RNA residues in this entry.

6.3 Carbohydrates [i](#)

There are no carbohydrates in this entry.

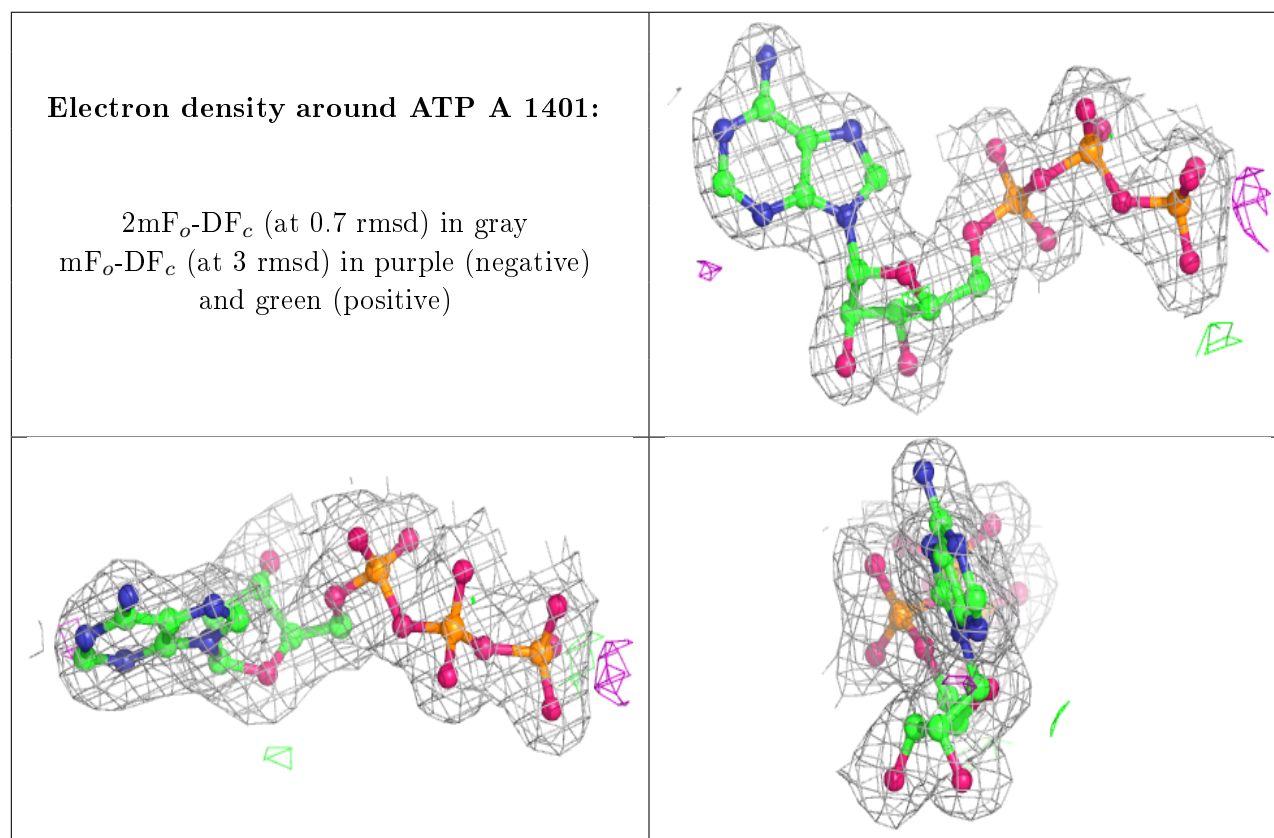
6.4 Ligands [i](#)

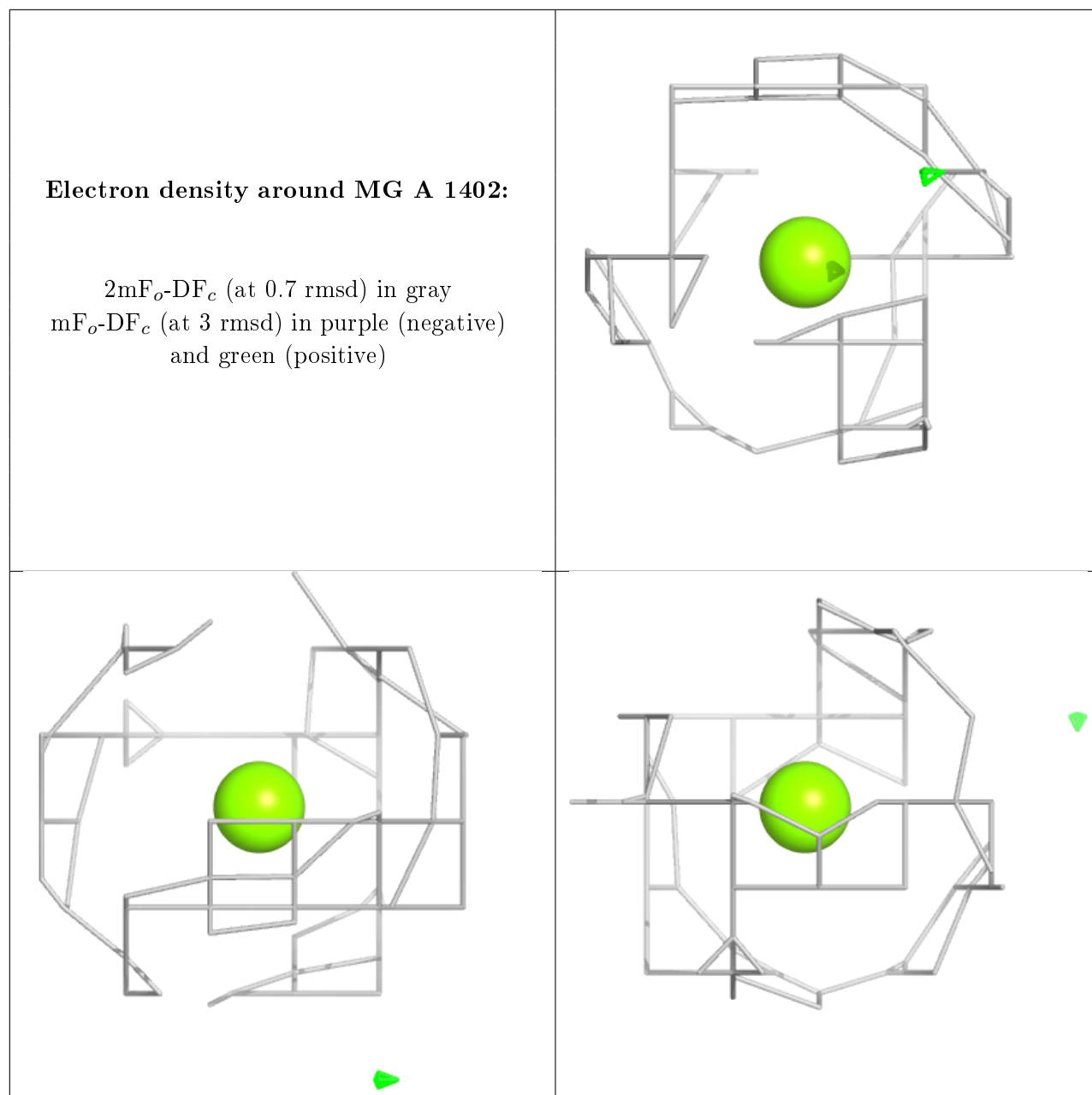
In the following table, the Atoms column lists the number of modelled atoms in the group and the number defined in the chemical component dictionary. The B-factors column lists the minimum,

median, 95th percentile and maximum values of B factors of atoms in the group. The column labelled 'Q< 0.9' lists the number of atoms with occupancy less than 0.9.

Mol	Type	Chain	Res	Atoms	RSCC	RSR	B-factors(\AA^2)	Q<0.9
2	ATP	A	1401	31/31	0.99	0.10	21,25,30,32	0
3	MG	A	1402	1/1	1.00	0.06	22,22,22,22	0

The following is a graphical depiction of the model fit to experimental electron density of all instances of the Ligand of Interest. In addition, ligands with molecular weight > 250 and outliers as shown on the geometry validation Tables will also be included. Each fit is shown from different orientation to approximate a three-dimensional view.





6.5 Other polymers ⓘ

There are no such residues in this entry.