



Full wwPDB X-ray Structure Validation Report ⓘ

May 16, 2020 – 06:45 pm BST

PDB ID : 6J1T
Title : Crystal structure of Candida Antarctica Lipase B mutant SR with product analogue
Authors : Cen, Y.X.; Zhou, J.H.; Wu, Q.
Deposited on : 2018-12-29
Resolution : 1.78 Å(reported)

This is a Full wwPDB X-ray Structure Validation Report for a publicly released PDB entry.

We welcome your comments at validation@mail.wwpdb.org

A user guide is available at

<https://www.wwpdb.org/validation/2017/XrayValidationReportHelp>

with specific help available everywhere you see the ⓘ symbol.

The following versions of software and data (see [references ⓘ](#)) were used in the production of this report:

MolProbity	:	4.02b-467
Mogul	:	1.8.5 (274361), CSD as541be (2020)
Xtriage (Phenix)	:	1.13
EDS	:	2.11
buster-report	:	1.1.7 (2018)
Percentile statistics	:	20191225.v01 (using entries in the PDB archive December 25th 2019)
Refmac	:	5.8.0158
CCP4	:	7.0.044 (Gargrove)
Ideal geometry (proteins)	:	Engh & Huber (2001)
Ideal geometry (DNA, RNA)	:	Parkinson et al. (1996)
Validation Pipeline (wwPDB-VP)	:	2.11

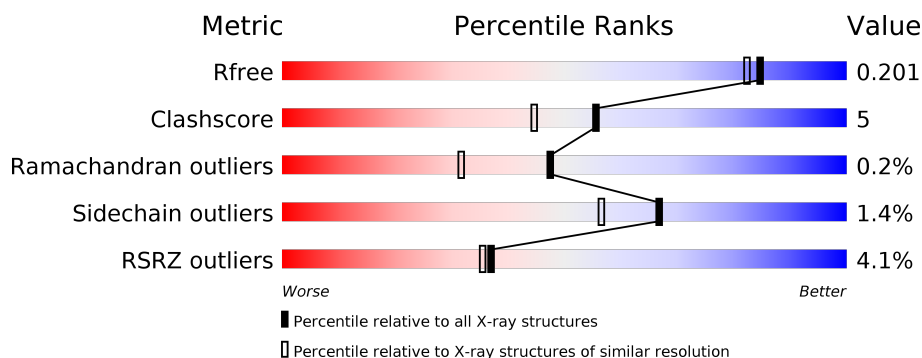
1 Overall quality at a glance ⓘ

The following experimental techniques were used to determine the structure:

X-RAY DIFFRACTION

The reported resolution of this entry is 1.78 Å.

Percentile scores (ranging between 0-100) for global validation metrics of the entry are shown in the following graphic. The table shows the number of entries on which the scores are based.



Metric	Whole archive (#Entries)	Similar resolution (#Entries, resolution range(Å))
R_{free}	130704	9185 (1.80-1.76)
Clashscore	141614	10184 (1.80-1.76)
Ramachandran outliers	138981	10051 (1.80-1.76)
Sidechain outliers	138945	10050 (1.80-1.76)
RSRZ outliers	127900	9032 (1.80-1.76)

The table below summarises the geometric issues observed across the polymeric chains and their fit to the electron density. The red, orange, yellow and green segments on the lower bar indicate the fraction of residues that contain outliers for ≥ 3 , 2, 1 and 0 types of geometric quality criteria respectively. A grey segment represents the fraction of residues that are not modelled. The numeric value for each fraction is indicated below the corresponding segment, with a dot representing fractions $\leq 5\%$. The upper red bar (where present) indicates the fraction of residues that have poor fit to the electron density. The numeric value is given above the bar.

Mol	Chain	Length	Quality of chain
1	A	321	<div> <div>4%</div> <div> <div></div> <div>94%</div> <div>5% •</div> </div> </div>
1	B	321	<div> <div>4%</div> <div> <div></div> <div>91%</div> <div>7% ••</div> </div> </div>

The following table lists non-polymeric compounds, carbohydrate monomers and non-standard residues in protein, DNA, RNA chains that are outliers for geometric or electron-density-fit criteria:

Mol	Type	Chain	Res	Chirality	Geometry	Clashes	Electron density
2	B7U	A	401	-	-	-	X
3	SO4	B	403	-	-	X	-
5	EDO	A	405	-	-	X	-

2 Entry composition

There are 8 unique types of molecules in this entry. The entry contains 5200 atoms, of which 0 are hydrogens and 0 are deuteriums.

In the tables below, the ZeroOcc column contains the number of atoms modelled with zero occupancy, the AltConf column contains the number of residues with at least one atom in alternate conformation and the Trace column contains the number of residues modelled with at most 2 atoms.

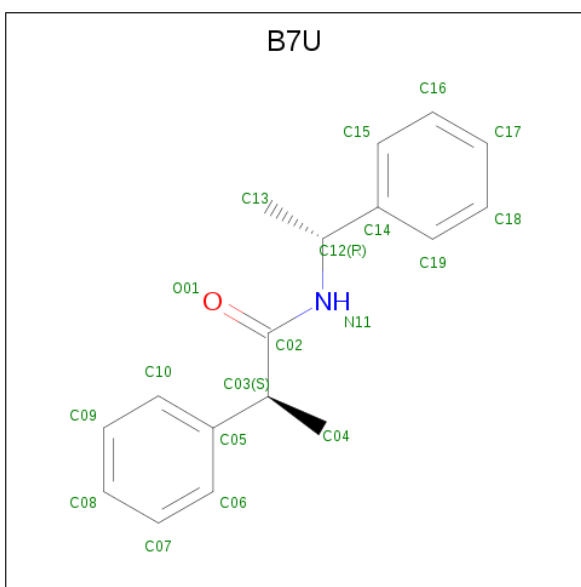
- Molecule 1 is a protein called Lipase B.

Mol	Chain	Residues	Atoms					ZeroOcc	AltConf	Trace
1	A	318	Total	C	N	O	S	0	2	0
			2344	1483	393	457	11			
1	B	318	Total	C	N	O	S	0	2	0
			2345	1483	392	458	12			

There are 18 discrepancies between the modelled and reference sequences:

Chain	Residue	Modelled	Actual	Comment	Reference
A	-3	GLY	-	expression tag	UNP P41365
A	-2	ALA	-	expression tag	UNP P41365
A	-1	MET	-	expression tag	UNP P41365
A	0	ALA	-	expression tag	UNP P41365
A	57	ALA	THR	engineered mutation	UNP P41365
A	89	THR	ALA	engineered mutation	UNP P41365
A	190	CYS	VAL	engineered mutation	UNP P41365
A	281	GLY	ALA	engineered mutation	UNP P41365
A	282	VAL	ALA	engineered mutation	UNP P41365
B	-3	GLY	-	expression tag	UNP P41365
B	-2	ALA	-	expression tag	UNP P41365
B	-1	MET	-	expression tag	UNP P41365
B	0	ALA	-	expression tag	UNP P41365
B	57	ALA	THR	engineered mutation	UNP P41365
B	89	THR	ALA	engineered mutation	UNP P41365
B	190	CYS	VAL	engineered mutation	UNP P41365
B	281	GLY	ALA	engineered mutation	UNP P41365
B	282	VAL	ALA	engineered mutation	UNP P41365

- Molecule 2 is (2S)-2-phenyl-N-[(1R)-1-phenylethyl]propanamide (three-letter code: B7U) (formula: C₁₇H₁₉NO) (labeled as "Ligand of Interest" by author).



Mol	Chain	Residues	Atoms				ZeroOcc	AltConf
2	A	1	Total	C	N	O	0	0
			19	17	1	1		

- Molecule 3 is SULFATE ION (three-letter code: SO4) (formula: O₄S).



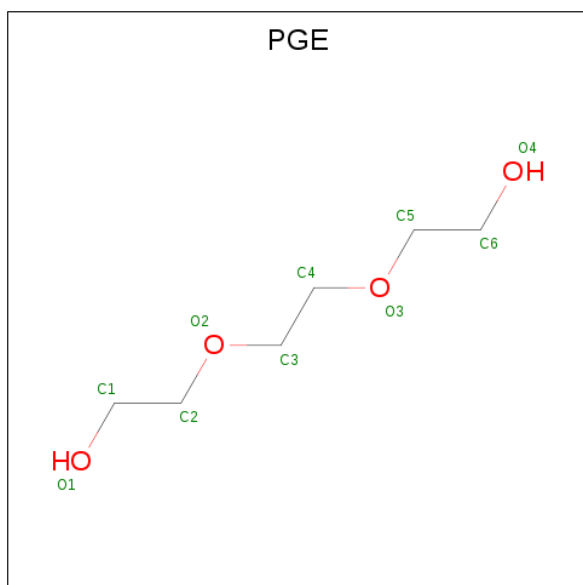
Mol	Chain	Residues	Atoms			ZeroOcc	AltConf
3	A	1	Total	O	S	0	0
			5	4	1		
3	A	1	Total	O	S	0	0
			5	4	1		
3	B	1	Total	O	S	0	0
			5	4	1		

Continued on next page...

Continued from previous page...

Mol	Chain	Residues	Atoms			ZeroOcc	AltConf
3	B	1	Total	O	S	0	0
			5	4	1		
3	B	1	Total	O	S	0	0
			5	4	1		

- Molecule 4 is TRIETHYLENE GLYCOL (three-letter code: PGE) (formula: $C_6H_{14}O_4$).



Mol	Chain	Residues	Atoms			ZeroOcc	AltConf
4	A	1	Total	C	O	0	0
			10	6	4		
4	B	1	Total	C	O	0	0
			10	6	4		

- Molecule 5 is 1,2-ETHANEDIOL (three-letter code: EDO) (formula: $C_2H_6O_2$).



Mol	Chain	Residues	Atoms	ZeroOcc	AltConf
5	A	1	Total C O 4 2 2	0	0
5	A	1	Total C O 4 2 2	0	0
5	B	1	Total C O 4 2 2	0	0
5	B	1	Total C O 4 2 2	0	0
5	B	1	Total C O 4 2 2	0	0
5	B	1	Total C O 4 2 2	0	0
5	B	1	Total C O 4 2 2	0	0

- Molecule 6 is CHLORIDE ION (three-letter code: CL) (formula: Cl).

Mol	Chain	Residues	Atoms	ZeroOcc	AltConf
6	B	4	Total Cl 4 4	0	0
6	A	2	Total Cl 2 2	0	0

- Molecule 7 is DI(HYDROXYETHYL)ETHER (three-letter code: PEG) (formula: C₄H₁₀O₃).



Mol	Chain	Residues	Atoms			ZeroOcc	AltConf
7	A	1	Total	C	O	0	0
			7	4	3		
7	B	1	Total	C	O	0	0
			7	4	3		
7	B	1	Total	C	O	0	0
			7	4	3		

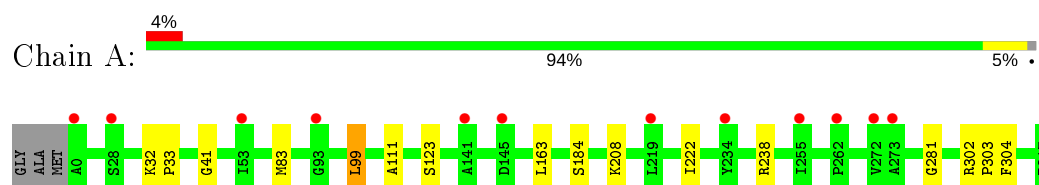
- Molecule 8 is water.

Mol	Chain	Residues	Atoms		ZeroOcc	AltConf
8	A	196	Total	O	0	0
			196	196		
8	B	196	Total	O	0	0
			196	196		

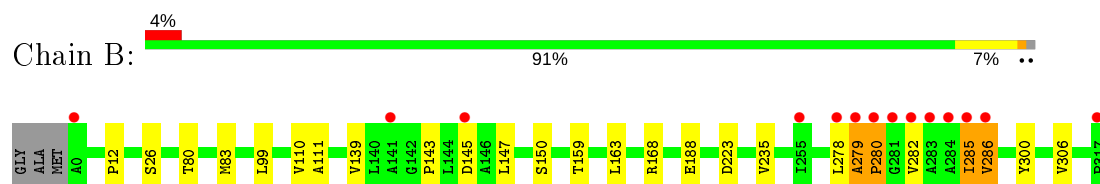
3 Residue-property plots [i](#)

These plots are drawn for all protein, RNA and DNA chains in the entry. The first graphic for a chain summarises the proportions of the various outlier classes displayed in the second graphic. The second graphic shows the sequence view annotated by issues in geometry and electron density. Residues are color-coded according to the number of geometric quality criteria for which they contain at least one outlier: green = 0, yellow = 1, orange = 2 and red = 3 or more. A red dot above a residue indicates a poor fit to the electron density ($RSRZ > 2$). Stretches of 2 or more consecutive residues without any outlier are shown as a green connector. Residues present in the sample, but not in the model, are shown in grey.

• Molecule 1: Lipase B



• Molecule 1: Lipase B



4 Data and refinement statistics

Property	Value	Source
Space group	P 1 21 1	Depositor
Cell constants a, b, c, α , β , γ	46.64Å 80.38Å 73.30Å 90.00° 98.23° 90.00°	Depositor
Resolution (Å)	37.05 – 1.78 37.05 – 1.78	Depositor EDS
% Data completeness (in resolution range)	98.6 (37.05-1.78) 98.7 (37.05-1.78)	Depositor EDS
R_{merge}	0.07	Depositor
R_{sym}	(Not available)	Depositor
$\langle I/\sigma(I) \rangle$ ¹	2.24 (at 1.78Å)	Xtriage
Refinement program	PHENIX (1.10.1 _2155: ???)	Depositor
R, R_{free}	0.173 , 0.202 0.173 , 0.201	Depositor DCC
R_{free} test set	2558 reflections (5.08%)	wwPDB-VP
Wilson B-factor (Å ²)	25.9	Xtriage
Anisotropy	0.182	Xtriage
Bulk solvent k_{sol} (e/Å ³), B_{sol} (Å ²)	0.34 , 43.3	EDS
L-test for twinning ²	$\langle L \rangle = 0.50$, $\langle L^2 \rangle = 0.33$	Xtriage
Estimated twinning fraction	No twinning to report.	Xtriage
F_o, F_c correlation	0.97	EDS
Total number of atoms	5200	wwPDB-VP
Average B, all atoms (Å ²)	32.0	wwPDB-VP

Xtriage's analysis on translational NCS is as follows: *The largest off-origin peak in the Patterson function is 6.77% of the height of the origin peak. No significant pseudotranslation is detected.*

¹Intensities estimated from amplitudes.

²Theoretical values of $\langle |L| \rangle$, $\langle L^2 \rangle$ for acentric reflections are 0.5, 0.333 respectively for untwinned datasets, and 0.375, 0.2 for perfectly twinned datasets.

5 Model quality [i](#)

5.1 Standard geometry [i](#)

Bond lengths and bond angles in the following residue types are not validated in this section: PGE, B7U, CL, EDO, SO4, PEG

The Z score for a bond length (or angle) is the number of standard deviations the observed value is removed from the expected value. A bond length (or angle) with $|Z| > 5$ is considered an outlier worth inspection. RMSZ is the root-mean-square of all Z scores of the bond lengths (or angles).

Mol	Chain	Bond lengths		Bond angles	
		RMSZ	$\# Z > 5$	RMSZ	$\# Z > 5$
1	A	0.42	0/2403	0.56	0/3297
1	B	0.45	0/2404	0.64	2/3300 (0.1%)
All	All	0.44	0/4807	0.60	2/6597 (0.0%)

There are no bond length outliers.

All (2) bond angle outliers are listed below:

Mol	Chain	Res	Type	Atoms	Z	Observed(°)	Ideal(°)
1	B	279	ALA	C-N-CD	-12.29	93.57	120.60
1	B	286	VAL	N-CA-C	-5.45	96.28	111.00

There are no chirality outliers.

There are no planarity outliers.

5.2 Too-close contacts [i](#)

In the following table, the Non-H and H(model) columns list the number of non-hydrogen atoms and hydrogen atoms in the chain respectively. The H(added) column lists the number of hydrogen atoms added and optimized by MolProbity. The Clashes column lists the number of clashes within the asymmetric unit, whereas Symm-Clashes lists symmetry related clashes.

Mol	Chain	Non-H	H(model)	H(added)	Clashes	Symm-Clashes
1	A	2344	0	2319	16	0
1	B	2345	0	2315	29	0
2	A	19	0	0	0	0
3	A	10	0	0	1	0
3	B	15	0	0	3	0
4	A	10	0	14	2	0
4	B	10	0	14	0	0

Continued on next page...

Continued from previous page...

Mol	Chain	Non-H	H(model)	H(added)	Clashes	Symm-Clashes
5	A	8	0	12	8	0
5	B	20	0	30	7	0
6	A	2	0	0	0	0
6	B	4	0	0	0	0
7	A	7	0	10	2	0
7	B	14	0	20	1	0
8	A	196	0	0	1	0
8	B	196	0	0	4	0
All	All	5200	0	4734	49	0

The all-atom clashscore is defined as the number of clashes found per 1000 atoms (including hydrogen atoms). The all-atom clashscore for this structure is 5.

All (49) close contacts within the same asymmetric unit are listed below, sorted by their clash magnitude.

Atom-1	Atom-2	Interatomic distance (Å)	Clash overlap (Å)
1:B:279:ALA:HB3	1:B:280:PRO:HD2	1.32	1.09
1:B:279:ALA:CB	1:B:280:PRO:CD	2.43	0.96
1:B:279:ALA:HB3	1:B:280:PRO:CD	1.96	0.96
1:B:279:ALA:CB	1:B:280:PRO:HD3	2.08	0.82
1:A:123:SER:HB2	7:A:409:PEG:H11	1.71	0.72
1:B:278:LEU:CD2	1:B:280:PRO:C	2.59	0.72
1:B:139:VAL:HG12	1:B:159:THR:HG21	1.71	0.71
1:B:278:LEU:HD23	1:B:280:PRO:N	2.06	0.70
1:B:278:LEU:HD21	1:B:280:PRO:O	1.93	0.69
1:A:99:LEU:HB3	5:A:405:EDO:H11	1.74	0.68
1:B:278:LEU:CD2	1:B:280:PRO:O	2.41	0.68
1:B:143:PRO:O	1:B:150:SER:OG	2.09	0.66
1:A:238:ARG:NH1	5:A:406:EDO:O2	2.26	0.65
1:A:302:ARG:NH1	8:A:501:HOH:O	2.23	0.60
1:A:33:PRO:HD2	5:A:405:EDO:H12	1.82	0.60
1:B:285:ILE:O	1:B:285:ILE:HG23	2.06	0.55
1:B:168:ARG:NH2	3:B:403:SO4:O4	2.40	0.55
1:B:279:ALA:HB1	1:B:280:PRO:HD3	1.84	0.55
1:B:278:LEU:O	1:B:279:ALA:C	2.47	0.52
5:B:409:EDO:H12	8:B:631:HOH:O	2.08	0.51
1:B:83:MET:SD	1:B:111:ALA:HA	2.50	0.51
1:A:32:LYS:HA	5:A:405:EDO:H21	1.93	0.51
1:A:33:PRO:HG2	5:A:405:EDO:H12	1.94	0.50
1:B:168:ARG:NH2	3:B:403:SO4:O1	2.36	0.49
1:B:282:VAL:O	1:B:286:VAL:HG23	2.13	0.49

Continued on next page...

Continued from previous page...

Atom-1	Atom-2	Interatomic distance (Å)	Clash overlap (Å)
1:B:278:LEU:HD23	1:B:280:PRO:C	2.33	0.47
1:B:306:VAL:HG22	8:B:517:HOH:O	2.15	0.47
1:B:168:ARG:NH2	3:B:403:SO4:S	2.87	0.47
7:A:409:PEG:H41	1:B:26:SER:HB2	1.97	0.46
5:B:407:EDO:H21	8:B:570:HOH:O	2.16	0.46
1:A:83:MET:SD	1:A:111:ALA:HA	2.55	0.46
1:A:208:LYS:NZ	3:A:402:SO4:O2	2.44	0.46
1:A:304:PHE:CD2	4:A:404:PGE:H52	2.50	0.46
1:A:33:PRO:CD	5:A:405:EDO:H12	2.46	0.46
1:B:279:ALA:CB	1:B:280:PRO:HD2	2.07	0.44
1:B:300:TYR:N	5:B:407:EDO:H11	2.33	0.44
1:B:235:VAL:HG11	7:B:415:PEG:H42	2.00	0.44
1:A:184:SER:HB2	1:A:222:ILE:HG13	2.00	0.44
5:B:405:EDO:O1	5:B:406:EDO:H11	2.18	0.44
1:A:33:PRO:CG	5:A:405:EDO:H12	2.49	0.43
1:A:303:PRO:HB2	4:A:404:PGE:H12	2.01	0.43
1:B:12:PRO:HB3	5:B:409:EDO:H11	2.00	0.43
1:A:41:GLY:O	1:A:281:GLY:HA2	2.20	0.42
1:B:188:GLU:OE2	1:B:223:ASP:HB2	2.20	0.42
1:B:80:THR:HA	1:B:110:VAL:HG13	2.01	0.41
5:B:405:EDO:H11	8:B:524:HOH:O	2.20	0.41
1:B:285:ILE:O	1:B:285:ILE:CG2	2.69	0.41
1:B:300:TYR:HB3	5:B:407:EDO:H11	2.03	0.41
1:A:238:ARG:HH11	5:A:406:EDO:HO2	1.62	0.40

There are no symmetry-related clashes.

5.3 Torsion angles [i](#)

5.3.1 Protein backbone [i](#)

In the following table, the Percentiles column shows the percent Ramachandran outliers of the chain as a percentile score with respect to all X-ray entries followed by that with respect to entries of similar resolution.

The Analysed column shows the number of residues for which the backbone conformation was analysed, and the total number of residues.

Mol	Chain	Analysed	Favoured	Allowed	Outliers	Percentiles	
1	A	318/321 (99%)	311 (98%)	7 (2%)	0	100	100

Continued on next page...

Continued from previous page...

Mol	Chain	Analysed	Favoured	Allowed	Outliers	Percentiles	
1	B	318/321 (99%)	306 (96%)	11 (4%)	1 (0%)	41	25
All	All	636/642 (99%)	617 (97%)	18 (3%)	1 (0%)	47	32

All (1) Ramachandran outliers are listed below:

Mol	Chain	Res	Type
1	B	280	PRO

5.3.2 Protein sidechains ⓘ

In the following table, the Percentiles column shows the percent sidechain outliers of the chain as a percentile score with respect to all X-ray entries followed by that with respect to entries of similar resolution.

The Analysed column shows the number of residues for which the sidechain conformation was analysed, and the total number of residues.

Mol	Chain	Analysed	Rotameric	Outliers	Percentiles	
1	A	258/257 (100%)	256 (99%)	2 (1%)	81	76
1	B	258/257 (100%)	253 (98%)	5 (2%)	57	43
All	All	516/514 (100%)	509 (99%)	7 (1%)	67	56

All (7) residues with a non-rotameric sidechain are listed below:

Mol	Chain	Res	Type
1	A	99	LEU
1	A	163	LEU
1	B	99	LEU
1	B	145	ASP
1	B	147	LEU
1	B	163	LEU
1	B	285	ILE

Some sidechains can be flipped to improve hydrogen bonding and reduce clashes. There are no such sidechains identified.

5.3.3 RNA ⓘ

There are no RNA molecules in this entry.

5.4 Non-standard residues in protein, DNA, RNA chains ⓘ

There are no non-standard protein/DNA/RNA residues in this entry.

5.5 Carbohydrates ⓘ

There are no carbohydrates in this entry.

5.6 Ligand geometry ⓘ

Of 24 ligands modelled in this entry, 6 are monoatomic - leaving 18 for Mogul analysis.

In the following table, the Counts columns list the number of bonds (or angles) for which Mogul statistics could be retrieved, the number of bonds (or angles) that are observed in the model and the number of bonds (or angles) that are defined in the Chemical Component Dictionary. The Link column lists molecule types, if any, to which the group is linked. The Z score for a bond length (or angle) is the number of standard deviations the observed value is removed from the expected value. A bond length (or angle) with $|Z| > 2$ is considered an outlier worth inspection. RMSZ is the root-mean-square of all Z scores of the bond lengths (or angles).

Mol	Type	Chain	Res	Link	Bond lengths			Bond angles		
					Counts	RMSZ	$\# Z > 2$	Counts	RMSZ	$\# Z > 2$
5	EDO	B	405	-	3,3,3	0.40	0	2,2,2	0.46	0
3	SO4	B	402	-	4,4,4	0.14	0	6,6,6	0.07	0
4	PGE	A	404	-	9,9,9	0.27	0	8,8,8	0.30	0
5	EDO	B	408	-	3,3,3	0.51	0	2,2,2	0.22	0
5	EDO	B	407	-	3,3,3	0.46	0	2,2,2	0.33	0
5	EDO	B	406	-	3,3,3	0.41	0	2,2,2	0.44	0
5	EDO	B	409	-	3,3,3	0.46	0	2,2,2	0.29	0
7	PEG	A	409	-	6,6,6	0.48	0	5,5,5	0.41	0
2	B7U	A	401	-	20,20,20	1.32	2 (10%)	25,26,26	1.50	6 (24%)
5	EDO	A	406	-	3,3,3	0.47	0	2,2,2	0.30	0
3	SO4	A	403	-	4,4,4	0.15	0	6,6,6	0.15	0
3	SO4	B	403	-	4,4,4	0.14	0	6,6,6	0.25	0
5	EDO	A	405	-	3,3,3	0.44	0	2,2,2	0.12	0
3	SO4	A	402	-	4,4,4	0.18	0	6,6,6	0.14	0
7	PEG	B	415	-	6,6,6	0.41	0	5,5,5	0.32	0
4	PGE	B	404	-	9,9,9	0.29	0	8,8,8	0.23	0
7	PEG	B	414	-	6,6,6	0.41	0	5,5,5	0.34	0
3	SO4	B	401	-	4,4,4	0.14	0	6,6,6	0.22	0

In the following table, the Chirals column lists the number of chiral outliers, the number of chiral centers analysed, the number of these observed in the model and the number defined in the Chemical Component Dictionary. Similar counts are reported in the Torsion and Rings columns.

'-' means no outliers of that kind were identified.

Mol	Type	Chain	Res	Link	Chirals	Torsions	Rings
5	EDO	B	405	-	-	1/1/1/1	-
4	PGE	A	404	-	-	5/7/7/7	-
5	EDO	B	408	-	-	0/1/1/1	-
5	EDO	B	406	-	-	1/1/1/1	-
5	EDO	B	409	-	-	1/1/1/1	-
7	PEG	A	409	-	-	1/4/4/4	-
2	B7U	A	401	-	-	9/16/16/16	0/2/2/2
5	EDO	A	406	-	-	0/1/1/1	-
7	PEG	B	415	-	-	2/4/4/4	-
5	EDO	A	405	-	-	0/1/1/1	-
5	EDO	B	407	-	-	0/1/1/1	-
4	PGE	B	404	-	-	4/7/7/7	-
7	PEG	B	414	-	-	1/4/4/4	-

All (2) bond length outliers are listed below:

Mol	Chain	Res	Type	Atoms	Z	Observed(Å)	Ideal(Å)
2	A	401	B7U	C02-N11	5.43	1.46	1.34
2	A	401	B7U	O01-C02	-2.09	1.19	1.23

All (6) bond angle outliers are listed below:

Mol	Chain	Res	Type	Atoms	Z	Observed(°)	Ideal(°)
2	A	401	B7U	C12-N11-C02	3.89	128.40	122.93
2	A	401	B7U	C05-C03-C02	3.10	116.24	108.16
2	A	401	B7U	C14-C12-N11	-2.56	105.39	111.31
2	A	401	B7U	C04-C03-C05	-2.27	107.48	112.92
2	A	401	B7U	C13-C12-N11	2.14	112.82	109.05
2	A	401	B7U	C04-C03-C02	-2.06	106.60	110.34

There are no chirality outliers.

All (25) torsion outliers are listed below:

Mol	Chain	Res	Type	Atoms
2	A	401	B7U	C13-C12-N11-C02
4	B	404	PGE	O2-C3-C4-O3
4	A	404	PGE	O2-C3-C4-O3
4	A	404	PGE	O3-C5-C6-O4
7	B	414	PEG	O2-C3-C4-O4
7	A	409	PEG	O1-C1-C2-O2

Continued on next page...

Continued from previous page...

Mol	Chain	Res	Type	Atoms
5	B	405	EDO	O1-C1-C2-O2
4	B	404	PGE	O1-C1-C2-O2
2	A	401	B7U	C02-C03-C05-C06
2	A	401	B7U	C02-C03-C05-C10
4	A	404	PGE	C1-C2-O2-C3
4	A	404	PGE	C4-C3-O2-C2
4	B	404	PGE	C3-C4-O3-C5
2	A	401	B7U	O01-C02-C03-C05
4	A	404	PGE	C3-C4-O3-C5
7	B	415	PEG	C1-C2-O2-C3
7	B	415	PEG	O1-C1-C2-O2
5	B	406	EDO	O1-C1-C2-O2
2	A	401	B7U	C13-C12-C14-C15
2	A	401	B7U	N11-C02-C03-C04
2	A	401	B7U	N11-C02-C03-C05
2	A	401	B7U	C13-C12-C14-C19
4	B	404	PGE	C1-C2-O2-C3
2	A	401	B7U	O01-C02-C03-C04
5	B	409	EDO	O1-C1-C2-O2

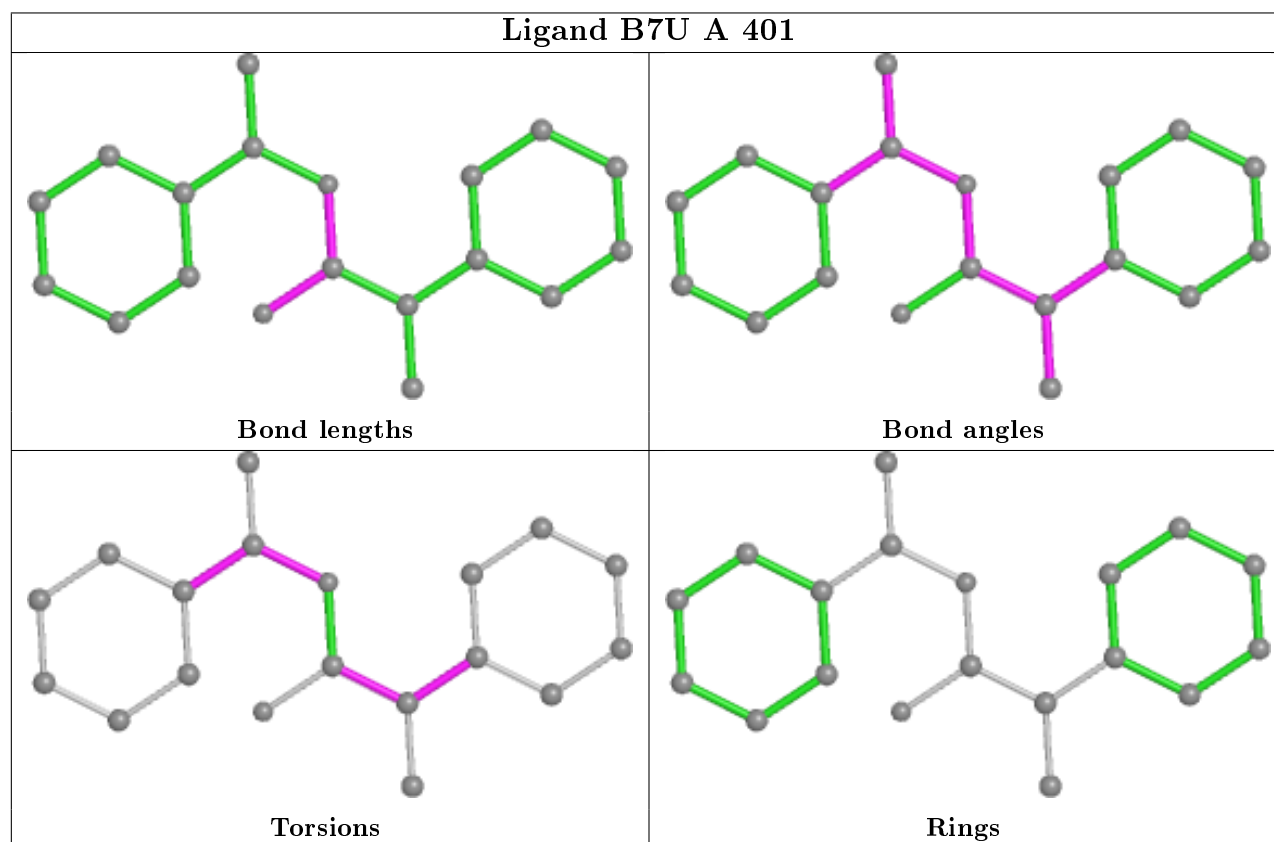
There are no ring outliers.

11 monomers are involved in 24 short contacts:

Mol	Chain	Res	Type	Clashes	Symm-Clashes
5	B	405	EDO	2	0
4	A	404	PGE	2	0
5	B	407	EDO	3	0
5	B	406	EDO	1	0
5	B	409	EDO	2	0
7	A	409	PEG	2	0
5	A	406	EDO	2	0
3	B	403	SO4	3	0
5	A	405	EDO	6	0
3	A	402	SO4	1	0
7	B	415	PEG	1	0

The following is a two-dimensional graphical depiction of Mogul quality analysis of bond lengths, bond angles, torsion angles, and ring geometry for all instances of the Ligand of Interest. In addition, ligands with molecular weight > 250 and outliers as shown on the validation Tables will also be included. For torsion angles, if less than 5% of the Mogul distribution of torsion angles is within 10 degrees of the torsion angle in question, then that torsion angle is considered an outlier. Any bond that is central to one or more torsion angles identified as an outlier by Mogul will be

highlighted in the graph. For rings, the root-mean-square deviation (RMSD) between the ring in question and similar rings identified by Mogul is calculated over all ring torsion angles. If the average RMSD is greater than 60 degrees and the minimal RMSD between the ring in question and any Mogul-identified rings is also greater than 60 degrees, then that ring is considered an outlier. The outliers are highlighted in purple. The color gray indicates Mogul did not find sufficient equivalents in the CSD to analyse the geometry.



5.7 Other polymers [i](#)

There are no such residues in this entry.

5.8 Polymer linkage issues [i](#)

There are no chain breaks in this entry.

6 Fit of model and data ⓘ

6.1 Protein, DNA and RNA chains ⓘ

In the following table, the column labelled ‘#RSRZ> 2’ contains the number (and percentage) of RSRZ outliers, followed by percent RSRZ outliers for the chain as percentile scores relative to all X-ray entries and entries of similar resolution. The OWAB column contains the minimum, median, 95th percentile and maximum values of the occupancy-weighted average B-factor per residue. The column labelled ‘Q< 0.9’ lists the number of (and percentage) of residues with an average occupancy less than 0.9.

Mol	Chain	Analysed	<RSRZ>	#RSRZ>2	OWAB(Å ²)	Q<0.9
1	A	318/321 (99%)	0.39	12 (3%) 40 39	18, 31, 50, 70	0
1	B	318/321 (99%)	0.24	14 (4%) 34 32	18, 25, 51, 105	0
All	All	636/642 (99%)	0.32	26 (4%) 37 35	18, 27, 50, 105	0

All (26) RSRZ outliers are listed below:

Mol	Chain	Res	Type	RSRZ
1	B	279	ALA	7.9
1	B	280	PRO	7.1
1	B	283	ALA	6.2
1	B	282	VAL	5.6
1	B	286	VAL	5.5
1	B	284	ALA	5.0
1	A	141	ALA	4.9
1	B	141	ALA	4.9
1	B	285	ILE	4.8
1	B	278	LEU	4.7
1	B	145	ASP	3.9
1	A	219	LEU	3.1
1	A	0	ALA	3.1
1	A	145	ASP	2.9
1	B	317	PRO	2.8
1	B	0	ALA	2.7
1	A	93	GLY	2.6
1	A	53	ILE	2.4
1	A	272	VAL	2.4
1	A	273	ALA	2.4
1	B	281	GLY	2.3
1	A	262	PRO	2.3
1	A	28	SER	2.2
1	A	255	ILE	2.2

Continued on next page...

Continued from previous page...

Mol	Chain	Res	Type	RSRZ
1	A	234	TYR	2.1
1	B	255	ILE	2.1

6.2 Non-standard residues in protein, DNA, RNA chains [i](#)

There are no non-standard protein/DNA/RNA residues in this entry.

6.3 Carbohydrates [i](#)

There are no carbohydrates in this entry.

6.4 Ligands [i](#)

In the following table, the Atoms column lists the number of modelled atoms in the group and the number defined in the chemical component dictionary. The B-factors column lists the minimum, median, 95th percentile and maximum values of B factors of atoms in the group. The column labelled 'Q<0.9' lists the number of atoms with occupancy less than 0.9.

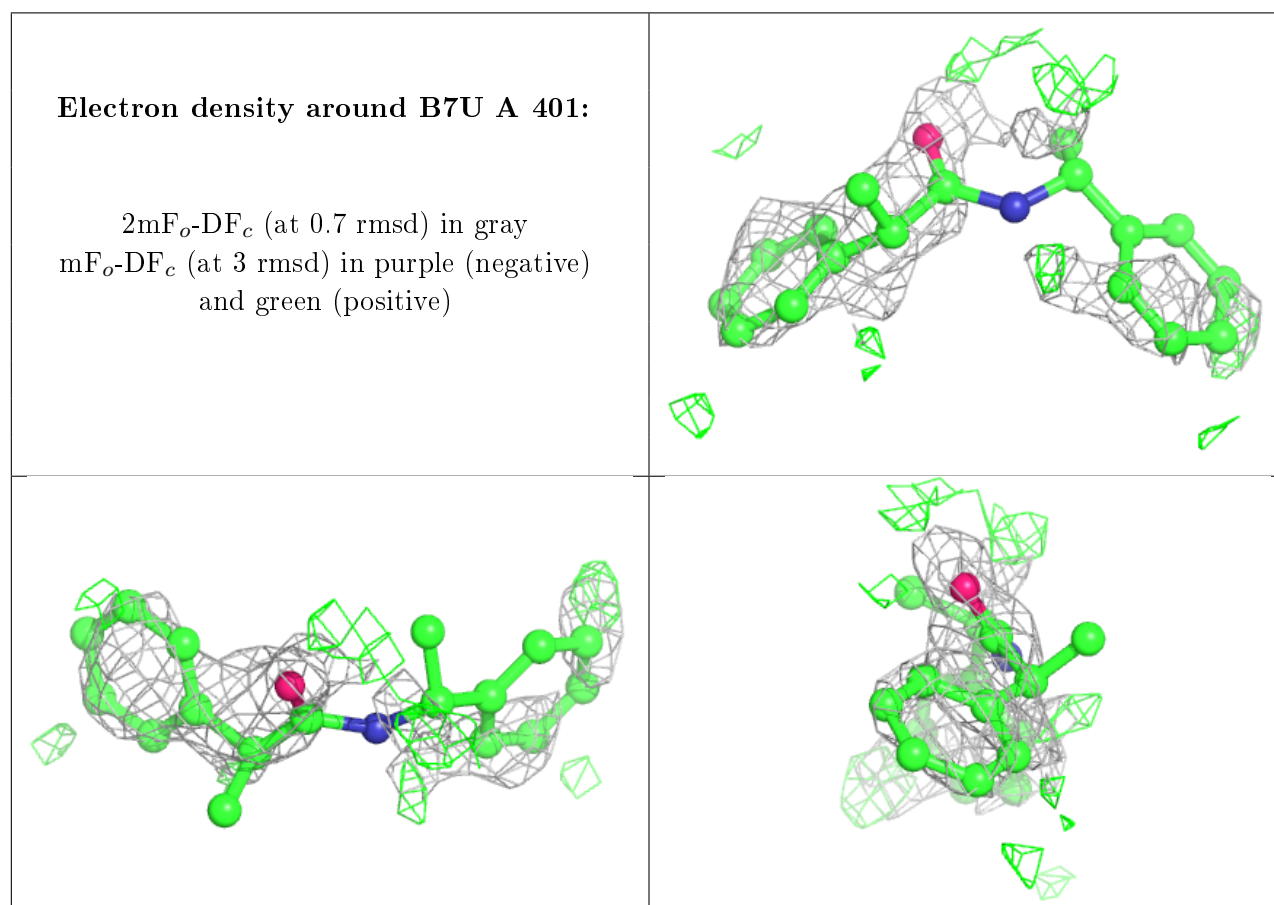
Mol	Type	Chain	Res	Atoms	RSCC	RSR	B-factors(Å ²)	Q<0.9
2	B7U	A	401	19/19	0.63	0.43	87,91,99,99	0
7	PEG	B	415	7/7	0.63	0.27	68,69,70,70	0
5	EDO	B	407	4/4	0.72	0.26	58,58,60,60	0
7	PEG	A	409	7/7	0.75	0.26	46,48,50,52	0
5	EDO	B	409	4/4	0.77	0.23	42,43,44,45	0
4	PGE	B	404	10/10	0.81	0.16	53,55,57,57	0
5	EDO	A	406	4/4	0.81	0.13	64,65,65,66	0
6	CL	A	407	1/1	0.83	0.10	55,55,55,55	0
4	PGE	A	404	10/10	0.84	0.16	53,55,56,56	0
6	CL	B	410	1/1	0.84	0.10	57,57,57,57	0
6	CL	B	411	1/1	0.85	0.06	68,68,68,68	0
5	EDO	B	406	4/4	0.85	0.23	39,41,42,44	0
6	CL	B	412	1/1	0.86	0.08	72,72,72,72	0
5	EDO	B	408	4/4	0.87	0.23	47,47,47,48	0
6	CL	A	408	1/1	0.87	0.17	74,74,74,74	0
5	EDO	B	405	4/4	0.88	0.16	37,37,38,38	0
3	SO4	B	402	5/5	0.89	0.31	76,76,77,78	0
3	SO4	A	403	5/5	0.89	0.22	102,102,103,104	0
7	PEG	B	414	7/7	0.90	0.11	51,52,54,56	0
3	SO4	A	402	5/5	0.90	0.17	63,65,65,66	0
5	EDO	A	405	4/4	0.91	0.18	41,42,42,42	0

Continued on next page...

Continued from previous page...

Mol	Type	Chain	Res	Atoms	RSCC	RSR	B-factors(\AA^2)	Q<0.9
3	SO4	B	403	5/5	0.91	0.13	70,71,72,72	0
6	CL	B	413	1/1	0.93	0.07	70,70,70,70	0
3	SO4	B	401	5/5	0.94	0.16	55,56,57,58	0

The following is a graphical depiction of the model fit to experimental electron density of all instances of the Ligand of Interest. In addition, ligands with molecular weight > 250 and outliers as shown on the geometry validation Tables will also be included. Each fit is shown from different orientation to approximate a three-dimensional view.



6.5 Other polymers ⓘ

There are no such residues in this entry.